



2007

Montana Public Library Annual Report of Statistics

July 2006 - June 2007



ISSN: 1066-4094

Montana

Public Library Annual Report of Statistics

July 2006 - June 2007

ISSN: 1066-4904

Published by:



1515 East Sixth Avenue -- PO Box 201800

Helena, Montana 59620-1800

406-444-3115 -- Fax: 406-444-0266

<http://msl.mt.gov>

This publication is available in PDF at

http://msl.mt.gov/For_Librarians/For_Public_Librarians/Statistics/default.asp

msl@mt.gov

Table of Contents

Letter from the Montana State Librarian, Darlene Staffeldt Montana Map with Public and Branch Libraries by Type

Statewide Library Performance Indicators

Core Performance Measures	1
General and Service Area Population Tables	1
Interpreting Measures	1
Visits Per Capita	2
Circulation Per Capita	3
Collection Turnover Rate	4
Income Per Capita	5

General and Service Area Population Tables

General Information	7
Staff Information	9
Salaries	11
Statewide Mean Yearly Salaries	14
Library Income	15
Library Income by Service Area Population	19
Expenditures	23
Expenditures by Service Area Population	27
Collection	31
Collection by Service Area Population	33
Service Hours	37
Service Hours by Service Area Population	39
Circulation	41
Circulation by Service Area Population	43
Programs	45
Interlibrary Loans	47
Interlibrary Loans by Service Area Population	49
Library Facility Adequacy	51
Automation	53
Definitions, Abbreviations & Acronyms	56
Contact Information	56
Appendix A: Average Library Revenue and Expense Charts	57

Letter from the State Librarian



*Darlene Staffeldt
State Librarian*

This report contains statistical information for all 80 legally established public libraries in Montana. All statistics are for the reporting period July 2006 through June 2007 and with few exceptions (i.e. service population which is pulled from census statistics) are submitted by the libraries themselves. The State Library cooperates with the Federal-State Cooperative System (FSCS) program, which develops and compiles national public library statistics for the United States. MSL provides Montana information to the FSCS so that policy-makers, funders, trustees, and librarians can identify trends in the country's libraries services.

I hope that Montana public librarians, trustees, and friends find this report of use to improve the quality and effectiveness of public library service. This information can be useful both in evaluating past efforts and in many planning activities. One way to evaluate your library's performance is to compare measures from year to year. Another way to evaluate is to compare your library's performance with other similar libraries.

The context of the statistics is important for both types of use. If your library's circulation has decreased significantly from year to year, you might easily find the answer if you have experienced budget reductions. However, you may not find an easy answer and you must investigate these changes to remedy problems or continue beneficial activities. Such analysis should use statistics from as many years as possible to spot long-term trends.

If you use the measures to compare your library to other libraries, you should use similar libraries so that the comparisons are meaningful. This report is designed to help you do so by dividing libraries into groups that serve similar populations. However, even within these population groups, wide variations exist between individual libraries. Before using the statistics to make comparisons, check that similarities exist in other factors, such as income, hours open, collections, or mission, goals, and objectives.

The information in the report is presented in two main sections -- performance measures; and general tables. In the first section, MSL chose six measures to highlight. This section provides summaries, general descriptions, and identifies factors that may affect these measures.

The information in the second section, general tables, is presented in two ways. The first is by county name and then by city. The same information is provided by grouping libraries by population, allowing for easy comparisons of similar libraries. New this year, you will find some summary charts, top 5 lists, and pie graphs throughout this publication.

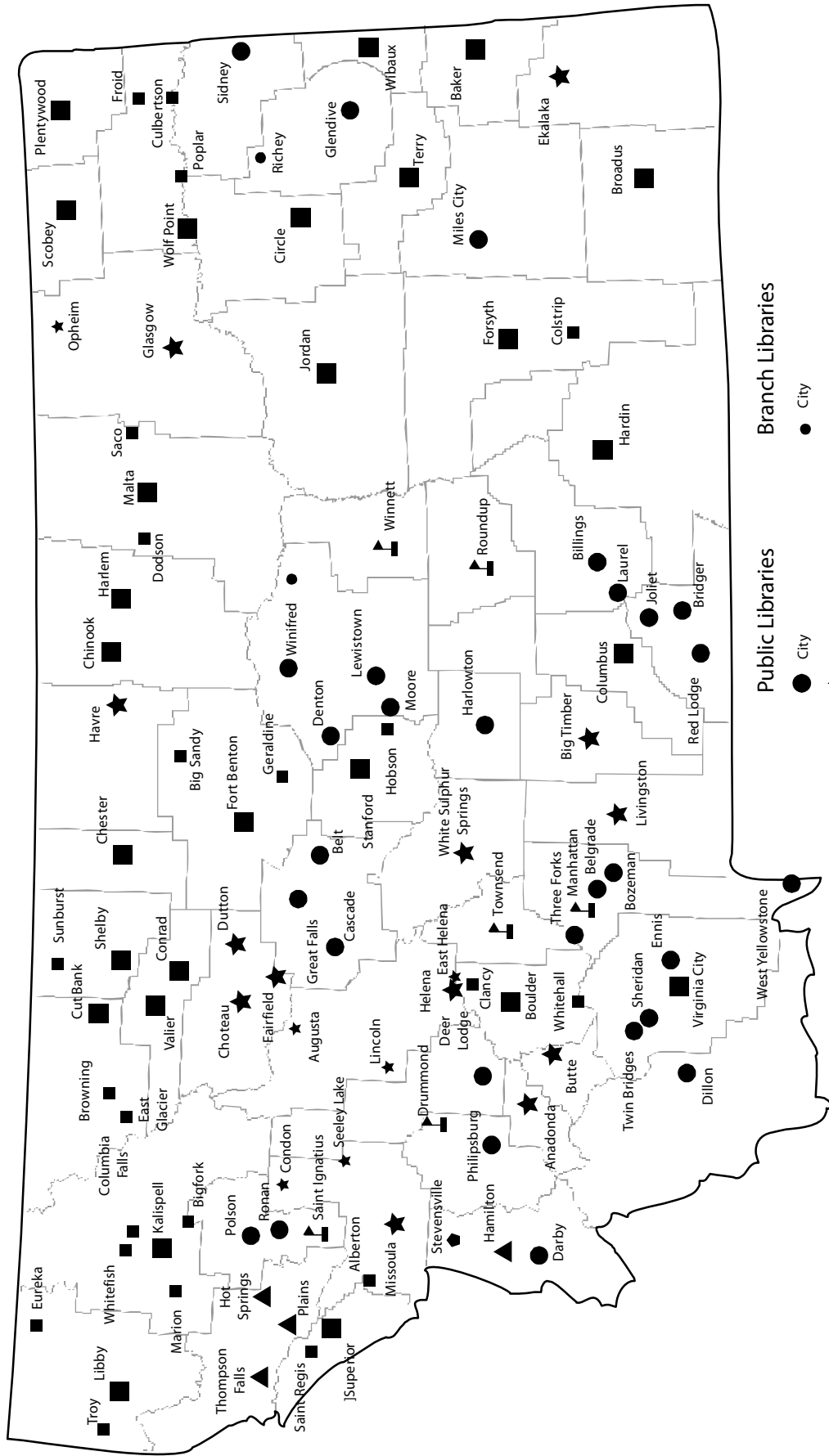
We wish you well in your efforts to continually improve library services in Montana. If we can provide assistance, please do not hesitate to contact us.

Sincerely,

A handwritten signature in cursive script that reads "Darlene Staffeldt".

Darlene Staffeldt
Montana State Librarian

Montana Library Types



Statewide Library Performance Indicators

Core Performance Measures	1
General and Service Area Population Tables	1
Interpreting Measures	1
Visits Per Capita	2
Circulation Per Capita	3
Collection Turnover Rate	4
Income Per Capita	5

Statewide Library Performance Indicators

Core Performance Measures

Because of their potential applications to library services planning and because of their usefulness as general indicators of library service on a statewide basis, six measures have been designated as core performance measures:

- Visits per capita
- Expenditures per capita
- Holdings per capita
- Turnover rate
- Circulation per capita
- Income per capita

General and Service Area Population Tables

The following pages provide summary data for these performance measures on a statewide basis. The population of the library service area is also provided. For each measure, the text gives a general description and identifies some of the factors affecting the measure.

In this publication, the general tables are categorized by the county in which the public library resides and report basic library information on a library-by-library basis.

Interpreting Measures

Although community and individual library circumstances vary, the core measures and general tables can assist Montana's public librarians and trustees as they evaluate library activities and plan improvements in library services. We offer the following suggestions:

- Analyze the library's statistics in terms of library mission, goals, and objectives. Libraries, even in communities of similar size, have varying funding patterns and community expectations for service. A reference and resource library will show a different pattern of statistics than a popular materials library.
- Realize that online databases and the Internet have changed library use patterns. Although statewide and national data have not yet been collected on this service, individual libraries should be tracking this use.
- Remember that performance measure scores are not absolutes. Performance measures are not necessarily precise. Most measures are calculated in percentages and ratios. Do not be too concerned about "decimal points."
- Use performance measures in context. There are not "right" or "wrong" scores for performance measures. One performance measure alone cannot tell a complete story. Performance measure scores should be interpreted in context with each other and with the library's overall service program and budget.
- Exercise patience in working toward improving performance measure scores. Changing a library's score on a performance measure is usually not accomplished overnight. Such a change usually requires work over an extended period. Improving a library's score on selected performance measures has to be a cooperative effort among the library director, library trustees, and the local community.

Visits Per Capita - SFY 2007

Visits Per Capita relates the number of people visiting the library to the population served. It can be thought of as representing the average number of times during a year that a member of the community uses the library. Visits Per Capita is calculated by dividing the library total attendance by the service area population.

Factors that Influence the Measure

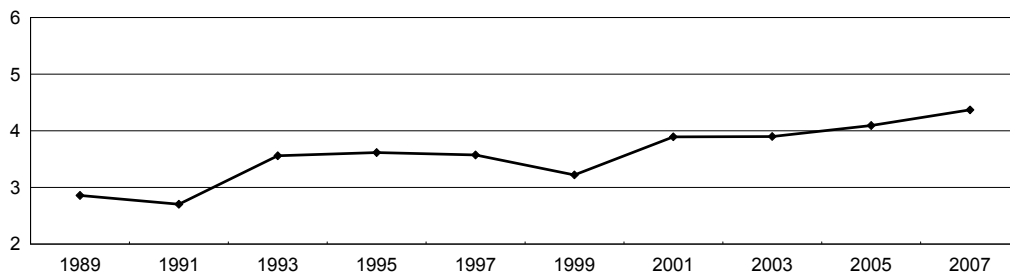
- Fluctuation in the size of the service area population
- Library hours of service
- Physical arrangement and convenience of library facilities
- Community awareness of library service
- Special programs--prizes, reading programs, etc.
- Library circulation or acquisitions policies, loan period, fines
- Age, condition, and size of the library's collection

Interpretation and Use

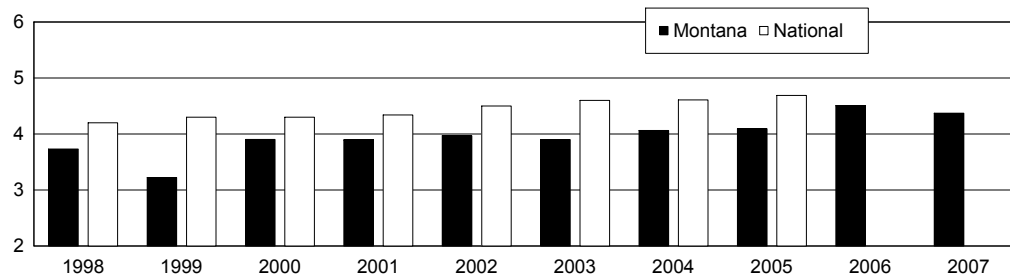
Visits Per Capita is one measure of the community's use of the library, whether for materials, programs, or meetings. A high score on the measure indicates heavy use of the facility. A low score may indicate several things. For example:

- The hours the library is open does not fit the needs of the community;
- The library's collection and/or programming does not meet the community's interests or needs;
- Residents may be unaware of what the library has to offer;
- The facility may be uninviting.

**Visits Per Capita
Five Year Increments - 1989 thru 2007**



Visits Per Capita - 1998 thru 2007



Circulation Per Capita - SFY 2007

Circulation Per Capita relates the number of items a library circulates to the population served. It can be thought of as representing the average number of items checked out in a year by a member of the community. Circulation Per Capita is calculated by dividing the library's total annual circulation by the service area population.

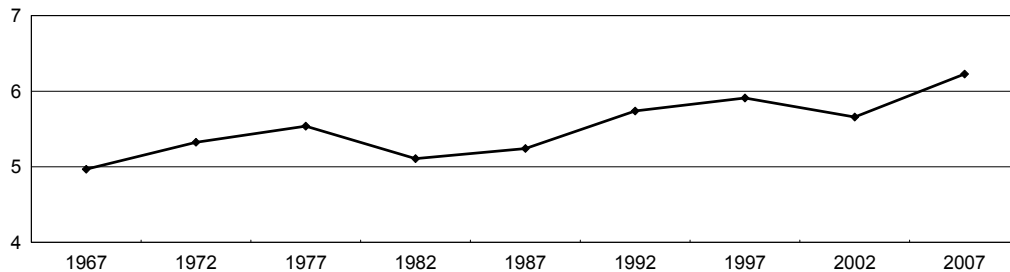
Factors that Influence the Measure

- Fluctuation in the size of the service area population
- Increase or decrease in the number of items circulated annually
- Library circulation or acquisitions policies, loan period, fines
- Special programs--prizes, reading programs, etc.
- Community awareness of library service
- Library hours of service
- Number of library users
- Age, condition, and size of the library's collection
- Physical arrangement and convenience of library facilities

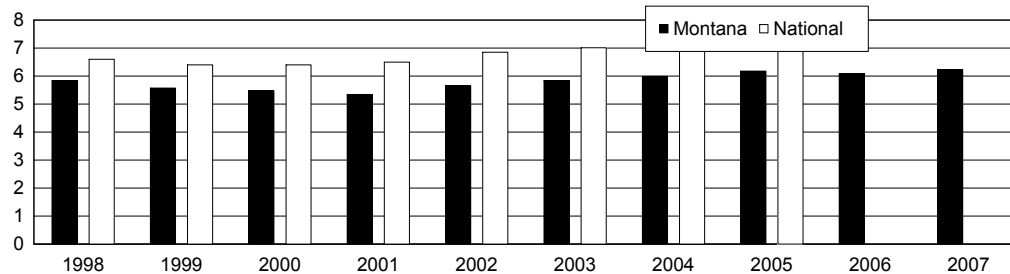
Interpretation and Use

- The library's collection may not meet community needs or interests;
- Community residents may be unaware of the library's resources;
- The library may have an extensive collection of non-circulating materials.

**Circulation Per Capita
Five Year Increments - 1967 thru 2007**



Circulation Per Capita - 1998 thru 2007



Collection Turnover Rate - SFY 2007

Turnover Rate measures the activity of a library's collection, indicating the number of times each unit of library material would have circulated during the year if circulation had been spread evenly throughout the collection. It is calculated by dividing the library's total annual circulation by total library holdings.

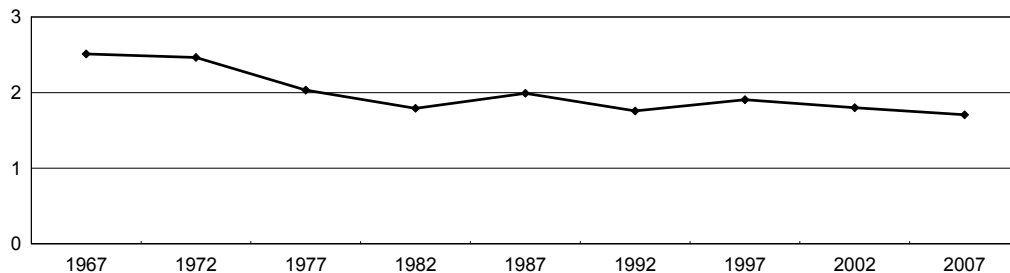
Factors that Influence the Measure

- Increase or decrease in the annual circulation
- Circulation policies--loan period, fines
- Library acquisitions and collection development policies
- Special programs--prizes, reading program, etc.
- Community awareness of library service
- Library hours of service
- Number of library users
- Age, condition, and size of the library's collection
- Physical arrangement and convenience of library facilities

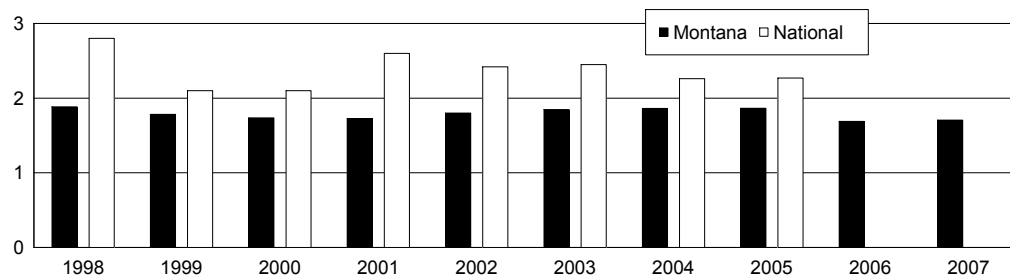
Interpretation and Use

This measure related strongly to the goals each library has set for meeting the service needs of its community. A library which emphasizes the circulation of popular reading materials will have a higher Turnover Rate than a library which emphasizes subject depth in its collection and has an extensive reference collection.

**Collection Turnover Per Capita
Five Year Increments - 1967 thru 2007**



Collection Turnover Per Capita - 1998 thru 2007



Income Per Capita - SFY 2007

Income Per Capita relates library income to the population of the service area served. It is obtained by dividing the library's total income by the service area population. Figures shown here are based on each library's **total income**, which includes city, district, county, state, federal, and other income.

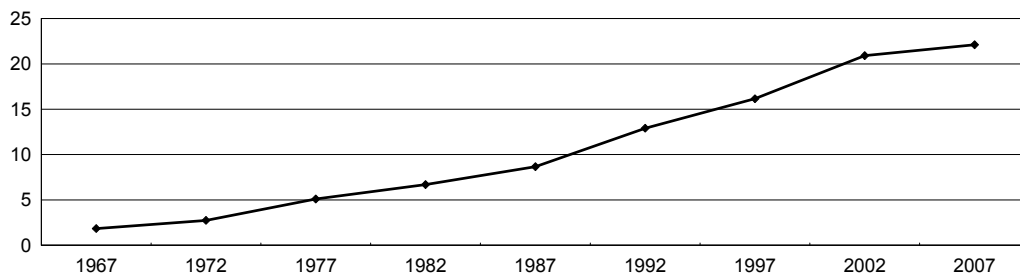
Factors that Influence the Measure

- Overall local economic conditions
- Changing tax base
- Demands on local government for all public services in general and library service specifically
- Community perception of the importance and value of library service
- Political climate
- Changes in the availability of state and federal grants

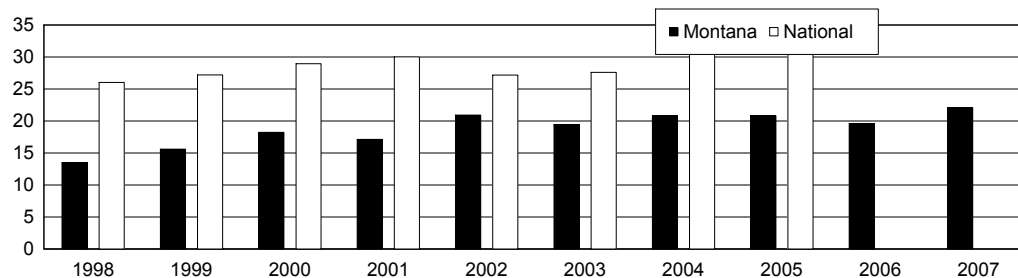
Interpretation and Use

Knowing the extent to which a city, district or county government is providing the financial support possible for its library is valuable information for public librarians and their boards.

**Income Per Capita
Five Year Increments - 1967 thru 2007**



Income Per Capita - 1998 thru 2007



General and Service Area Population Tables

General Information	7
Staff Information	9
Salaries	11
Statewide Mean Yearly Salaries	14
Library Income	15
Library Income by Service Area Population	19
Expenditures	23
Expenditures by Service Area Population	27
Collection	31
Collection by Service Area Population	33
Service Hours	37
Service Hours by Service Area Population	39
Circulation	41
Circulation by Service Area Population	43
Programs	45
Interlibrary Loans	47
Interlibrary Loans by Service Area Population	49
Library Facility Adequacy	51
Automation	53
Definitions, Abbreviations & Acronyms	56
Contact Information	56
Appendix A: Average Library Revenue and Expense Charts	57

General Information - SFY 2007

<i>county</i>	<i>library</i>	<i>registered borrowers</i>	<i>percent registered</i>	<i>branches</i>	<i>bookmobiles</i>
Beaverhead	Dillon Public Library	2,851	30.98	0	
Big Horn	Big Horn County Public Library	4,500	35.51	0	
Blaine	Blaine County Library	1,480	34.43	0	
	Harlem Public Library	845	31.18	0	
Broadwater	Broadwater School and Community Library	2,666	60.80	0	
Carbon	Bridger Public Library	978	43.29	0	
	Joliet Public Library	478	21.63	0	
	Red Lodge Carnegie Library	3,863	76.00	0	
Carter	Ekalaka Public Library	0	0.00	0	
Cascade	Belt Public Library	618	40.60	0	
	Great Falls Public Library	33,372	43.27	0	1
	Wedsworth Memorial Library	600	35.13	0	
Chouteau	Chouteau County Library	4,450	74.54	2	
Custer	Miles City Public Library	4,404	37.65	0	
Daniels	Daniels County Library	1,600	79.33	0	
Dawson	Glendive Public Library	4,783	52.80	1	
Deer Lodge	Hearst Free Library	3,434	36.47	0	
Fallon	Fallon County Library	1,248	43.99	0	
Fergus	Denton Public Library	187	62.13	0	
	Dorothy Asbjornson Community Library	152	97.44	0	
	Lewistown Public Library	3,601	32.01	0	
	Moore Public Library	0	0.00	0	
Flathead	Flathead County Library	39,598	53.17	4	
Gallatin	Belgrade Community Library	7,604	74.03	0	
	Bozeman Public Library	25,661	53.68	0	
	Manhattan Community Library	1,192	37.09	0	
	Three Forks Community Library	1,315	37.08	0	
	West Yellowstone Public Library	1,606	53.62	0	
Garfield	Garfield County Library	883	69.04	0	
Glacier	Glacier County Library	5,890	44.46	2	
Granite	Drummond School Community Library	422	37.78	0	
	Philipsburg Public Library	400	23.35	0	
Hill	Havre-Hill County Library	9,997	59.96	0	
Jefferson	Boulder Community Library	4,138	41.18	2	
Judith Basin	Judith Basin County Free Library	798	34.26	1	
Lake	Polson City Library	7,000	59.38	0	
	Ronan City Library	4,934	56.29	0	
	St Ignatius School-Community Library	922	15.49	0	
Lewis and Clark	Lewis and Clark Library	22,699	40.74	3	
Liberty	Liberty County Library	1,501	69.56	0	
Lincoln	Lincoln County Public Libraries	9,751	51.77	2	
Madison	Madison Valley Public Library	1,600	141.72	0	
	Sheridan Public Library	515	54.32	0	
	Thompson-Hickman County Library	2,275	55.71	0	
	Twin Bridges Public Library	759	110.16	0	
McCone	George McCone Memorial County Library	966	48.86	0	

General Information - SFY 2007

<i>county</i>	<i>library</i>	<i>registered borrowers</i>	<i>percent registered</i>	<i>branches</i>	<i>bookmobiles</i>
Meagher	Meagher County/City Library	776	40.17	0	
Mineral	Mineral County Public Library	2,191	56.41	2	
Missoula	Missoula Public Library	56,519	59.00	2	
Musselshell	Roundup School-Community Library	1,477	32.84	0	
Park	Livingston-Park County Public Library	13,266	84.53	0	
Petroleum	Petroleum County School-Community Library	469	95.13	0	
Phillips	Phillips County Library	2,074	45.08	2	
Pondera	Conrad Public Library	3,803	84.55	0	
	Valier Public Library	598	31.05	0	
Powder River	Henry A Malley Memorial Library	1,250	67.28	0	
Powell	William K. Kohrs Memorial Library	0	0.00	0	
Prairie	Prairie County Library	731	60.97	0	
Ravalli	Bitterroot Public Library	10,143	42.54	0	
	Darby Community Public Library	0	0.00	0	
	North Valley Public Library	7,563	90.91	0	
Richland	Sidney-Richland County Library	4,418	45.70	0	
Roosevelt	Roosevelt County Library	3,161	29.76	3	
Rosebud	Rosebud County Library	4,709	50.19	1	
Sanders	Plains Public Library District	2,413	63.37	0	
	Preston Town County Library	893	52.81	0	
	Thompson Falls Public Library	2,582	54.61	0	
Sheridan	Sheridan County Library	2,228	54.28	0	
Silver Bow	Butte-Silver Bow Public Library	13,078	37.79	0	
Stillwater	Stillwater County Library	4,498	54.89	0	
Sweet Grass	Carnegie Public Library	1,244	34.47	0	
Teton	Choteau/Teton Public Library	2,275	66.06	0	
	Dutton Public Library	342	24.41	0	
	Fairfield Public Library	696	43.53	0	
Toole	Toole County Library	2,553	48.47	1	
Valley	Glasgow City-County Library	3,809	49.63	1	
Wheatland	Harlowton Public Library	1,190	52.45	0	
Wibaux	Wibaux Public Library	643	60.21	0	
Yellowstone	Laurel Public Library	2,605	41.65	0	
	Parmly Billings Library	41,455	33.68	0	1

Statewide Totals

424,188 47.12 29 2

"-" = Data not available because the library has not purged its files in the last three years.

Percent Registered may be greater than 100% because some libraries allow people not in their service area to register.

Top 5 Percent of Registered Borrowers

Madison Valley Public Library	141.72
Twin Bridges Public Library	110.16
Dorothy Asbjornson Community Library	97.44
Petroleum County School-Community Library	95.13
North Valley Public Library	90.91

Percent of Registered Borrowers by Population Group

Over 25,000	45.90
10,000 - 24,999	49.40
5,000 - 9,999	48.27
3,500 - 4,999	47.20
2,000 - 3,499	48.40
1,200 - 1,999	41.32
1,199 and Under	73.21

Staff Information - SFY

<i>county</i>	<i>library</i>	<i>director has MLS</i>	<i>total FTE w/MLS</i>	<i>director FTE</i>	<i>librarian FTE</i>	<i>other staff</i>	<i>total staff</i>	<i>service area pop</i>
Beaverhead	Dillon Public Library		0.00	1.00	1.40	1.35	2.75	9,202
Big Horn	Big Horn County Public Library	Yes	1.00	1.00	4.00	0.80	4.80	12,671
Blaine	Harlem Public Library		0.00	0.63	1.13	0.00	1.13	2,710
	Blaine County Library		0.00	0.78	1.55	0.10	1.65	4,299
Broadwater	Broadwater School and Community Library		0.00	1.00	1.80	1.00	2.80	4,385
Carbon	Joliet Public Library		0.00	0.40	0.40	0.00	0.40	2,210
	Red Lodge Carnegie Library	Yes	1.00	1.00	1.00	0.48	1.48	5,083
	Bridger Public Library		0.00	0.53	0.53	0.20	0.73	2,259
Carter	Ekalaka Public Library		0.00	0.63	0.63	0.00	0.63	1,360
Cascade	Wedsworth Memorial Library		0.00	0.58	0.58	0.00	0.58	1,708
	Belt Public Library		0.00	0.00	0.55	0.55	1.10	1,522
	Great Falls Public Library	Yes	5.00	1.00	6.00	13.23	19.23	77,128
Chouteau	Chouteau County Library		0.00	1.00	4.08	0.60	4.68	5,970
Custer	Miles City Public Library		0.00	1.00	3.00	2.00	5.00	11,696
Daniels	Daniels County Library		0.00	0.80	1.68	0.00	1.68	2,017
Dawson	Glendive Public Library		0.00	1.00	1.30	2.83	4.13	9,059
Deer Lodge	Hearst Free Library	Yes	1.00	1.00	2.50	0.80	3.30	9,417
Fallon	Fallon County Library		0.00	1.00	1.00	2.13	3.13	2,837
Fergus	Dorothy Asbjornson Community Library		0.00	0.30	0.30	0.08	0.38	156
	Moore Public Library		0.00	0.38	0.40	0.00	0.40	186
	Lewistown Public Library		0.00	0.88	3.50	0.88	4.38	11,250
	Denton Public Library		0.00	1.00	1.00	0.00	1.00	301
Flathead	Flathead County Library	Yes	4.50	1.00	10.50	18.00	28.50	74,471
Gallatin	Bozeman Public Library	Yes	8.10	1.00	10.98	8.68	19.65	47,805
	Manhattan Community Library		0.00	1.00	1.00	1.13	2.13	3,214
	Three Forks Community Library		0.00	1.00	1.00	0.28	1.28	3,546
	West Yellowstone Public Library		0.00	1.00	2.00	0.25	2.25	2,995
	Belgrade Community Library		0.00	1.00	1.00	2.80	3.80	10,272
Garfield	Garfield County Library		0.00	0.50	0.70	0.00	0.70	1,279
Glacier	Glacier County Library	Yes	0.93	0.93	3.10	0.75	3.85	13,247
Granite	Drummond School Community Library		0.00	0.38	0.38	0.00	0.38	1,117
	Philipsburg Public Library		0.00	0.38	0.40	0.00	0.40	1,713
Hill	Havre-Hill County Library		0.00	1.00	4.30	0.40	4.70	16,673
Jefferson	Boulder Community Library	Yes	1.00	1.00	2.00	2.50	4.50	10,049
Judith Basin	Judith Basin County Free Library		0.00	1.00	1.60	0.00	1.60	2,329
Lake	Ronan City Library		0.00	0.80	1.43	0.60	2.03	8,765
	St Ignatius School-Community Library		0.00	0.93	1.43	0.85	2.28	5,953
	Polson City Library		0.00	1.00	3.60	2.05	5.65	11,789
Lewis and Clark	Lewis and Clark Library	Yes	6.00	1.00	11.90	17.83	29.73	55,716
Liberty	Liberty County Library		0.00	1.00	1.73	0.00	1.73	2,158
Lincoln	Lincoln County Public Libraries		1.00	1.00	5.93	1.58	7.50	18,837
Madison	Madison Valley Public Library		0.00	1.00	1.50	0.50	2.00	1,129
	Sheridan Public Library		0.00	1.00	1.00	0.00	1.00	948
	Twin Bridges Public Library		0.00	0.63	0.63	1.13	1.75	689
	Thompson-Hickman County Library		0.00	1.00	1.00	0.50	1.50	4,084
McCone	George McCone Memorial County Library		0.00	0.60	0.60	0.50	1.10	1,977

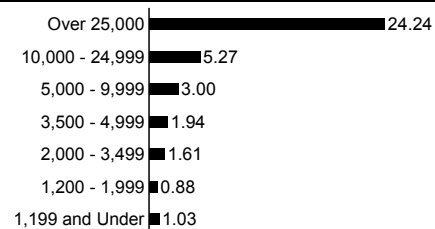
Staff Information - SFY

county	library	director has MLS	total FTE w/MLS	director FTE	librarian FTE	other staff	total staff	service area pop
Meagher	Meagher County/City Library		0.00	1.00	1.00	0.60	1.60	1,932
Mineral	Mineral County Public Library		0.00	0.63	1.00	0.85	1.85	3,884
Missoula	Missoula Public Library		5.00	1.00	12.20	21.40	33.60	95,802
Musselshell	Roundup School-Community Library	Yes	1.00	1.00	1.73	0.00	1.73	4,497
Park	Livingston-Park County Public Library	Yes	2.00	1.00	4.40	2.28	6.68	15,694
Petroleum	Petroleum County School-Community Library		0.00	0.23	0.25	0.85	1.10	493
Phillips	Phillips County Library		0.00	1.00	1.25	1.03	2.28	4,601
Pondera	Valier Public Library		0.00	0.88	0.88	0.23	1.10	1,926
	Conrad Public Library		0.00	1.00	2.83	0.00	2.83	4,498
Powder River	Henry A Malley Memorial Library		0.00	0.55	1.10	0.00	1.10	1,858
Powell	William K. Kohrs Memorial Library		0.00	1.00	1.48	0.53	2.00	7,180
Prairie	Prairie County Library		0.00	0.70	0.70	0.15	0.85	1,199
Ravalli	North Valley Public Library	Yes	0.63	0.60	0.60	2.13	2.73	8,319
	Darby Community Public Library		0.00	1.00	1.08	0.30	1.38	3,907
	Bitterroot Public Library		0.00	1.00	3.00	3.40	6.40	23,844
Richland	Sidney-Richland County Library		1.00	1.00	2.40	1.75	4.15	9,667
Roosevelt	Roosevelt County Library		0.00	1.00	4.98	1.00	5.98	10,620
Rosebud	Rosebud County Library		0.00	1.00	3.20	1.83	5.03	9,383
Sanders	Thompson Falls Public Library		0.00	0.70	1.50	0.53	2.03	4,728
	Preston Town County Library		0.00	0.50	0.50	0.50	1.00	1,691
	Plains Public Library District		0.00	0.75	0.78	0.83	1.60	3,808
Sheridan	Sheridan County Library		0.00	1.00	2.30	0.00	2.30	4,105
Silver Bow	Butte-Silver Bow Public Library		0.00	1.00	4.13	7.75	11.88	34,606
Stillwater	Stillwater County Library		0.90	1.00	1.90	0.00	1.90	8,195
Sweet Grass	Carnegie Public Library		0.00	1.00	2.00	0.00	2.00	3,609
Teton	Choteau/Teton Public Library		0.00	0.48	1.28	0.23	1.50	3,444
	Dutton Public Library		0.00	0.45	0.58	0.03	0.60	1,401
	Fairfield Public Library		0.00	0.50	0.50	0.20	0.70	1,599
Toole	Toole County Library		0.25	0.88	1.68	0.45	2.13	5,267
Valley	Glasgow City-County Library	Yes	1.00	1.00	1.15	2.58	3.73	7,675
Wheatland	Harlowton Public Library		0.00	0.88	1.30	0.20	1.50	2,269
Wibaux	Wibaux Public Library		0.00	0.60	1.20	0.08	1.28	1,068
Yellowstone	Laurel Public Library		0.00	1.00	2.05	0.75	2.80	6,255
	Parmly Billings Library	Yes	7.00	1.00	10.00	17.13	27.13	123,097

Statewide Totals

48.30 66.30 184.85 156.83 341.68 900,302

Total Employees by Service Population



Salaries - SFY 2007

<i>population category</i>	<i>position</i>	<i>high</i>	<i>low</i>
1,199 and Under			
	Library Director	24,544	12,792
	Library Director	24,960	24,960
	Assistant Director	16,474	16,474
	Branch Librarian	42,203	12,480
	Assistant Librarian	16,099	16,099
	Assistant Librarian	24,773	19,115
	Circulation Clerk	12,792	12,792
	Custodian	12,480	12,480
	Librarian	24,960	24,960
	Librarian	23,504	23,504
	Library Aide	15,600	15,600
	Library Aide	22,318	20,488
	Library Assistant	12,792	12,792
	Library Clerk	23,899	14,560
	Library Page	17,909	17,909
	Library Staff Member	24,544	14,206
	Library Technician	25,688	21,549
	Photograph Archivist	13,520	13,520
	Substitute Librarian	12,792	10,712
1,200 - 1,999			
	Library Director	24,107	14,560
	Academy Director	14,144	14,144
	Assistant Librarian	23,379	15,704
	Librarian	16,848	16,848
	Library Aide	15,600	15,600
	Library Assistant	13,520	13,520
	Library Clerk	17,202	13,520
	Library Staff Member	20,550	20,550
	Substitute Librarian	17,451	13,000
2,000 - 3,499			
	Library Director	46,800	17,680
	Assistant Librarian	27,040	12,896
	Circulation Librarian	17,472	17,472
	Library Aide	24,107	15,579
	Library Assistant	18,866	18,866
	Library Associate	17,368	16,640
	Library Clerk	16,640	16,640
	Special Librarian	20,800	20,800
	Technical Services Director	16,848	16,848
	Youth Services Librarian	18,013	18,013
3,500 - 4,999			
	Library Director	70,096	18,408
	Assistant Director	19,094	17,160
	Community Librarian	14,040	14,040
	Assistant Librarian	29,120	14,560
	Cataloger	14,560	14,560
	Circulation Librarian	13,520	13,520
	Custodian	13,520	13,520
	Information Systems Technician	33,696	33,696
	Library Aide	21,528	14,560
	Library Assistant	15,496	15,496
	Library Clerk	19,552	13,520
	Library High School Staff Member	43,680	43,680
	Library Staff Member	19,989	19,469
	Substitute Librarian	13,208	13,208
	Youth Services Librarian	16,640	16,640

Salaries - SFY 2007

<i>population category</i>	<i>position</i>	<i>high</i>	<i>low</i>
5,000 - 9,999			
	Library Director	44,325	22,880
	Assistant Director	21,840	18,845
	Community Librarian	16,640	16,640
	Assistant Librarian	24,440	16,557
	Cataloging Technician	22,651	14,934
	Circulation Librarian	26,208	17,160
	Interlibrary Loan Technician	18,200	18,200
	Library Aide	22,880	15,600
	Library Assistant	31,200	12,792
	Library Clerk	24,086	14,934
	Library Page	14,144	14,144
	Library Specialist	14,040	14,040
	Library Staff Member	15,579	15,579
	Library Technician	22,880	22,880
	Substitute Librarian	20,800	17,160
10,000 - 24,999			
	Library Director	40,934	30,243
	Administrative Assistant	20,904	20,904
	Adult Basic Education Teacher	21,320	21,320
	Adult Services Librarian	37,336	37,336
	Archivist	22,880	22,880
	Assistant Librarian	24,294	16,640
	Cataloger	22,880	22,880
	Circulation Clerk	24,627	14,768
	Circulation Librarian	27,019	17,742
	Collection Management Librarian	24,482	24,024
	Information Services Librarian	21,320	21,320
	Interlibrary Loan Librarian	20,509	20,509
	Interlibrary Loan Technician	35,360	35,360
	Librarian	22,360	22,360
	Library Aide	20,696	13,458
	Library Assistant	28,142	16,245
	Library Clerk	16,162	15,080
	Library Page	15,496	15,267
	Library Staff Member	29,557	29,557
	Network Manager	30,971	30,971
	Public Services Librarian	34,445	21,944
	Reference Librarian	27,810	27,810
	Substitute Librarian	18,179	18,179
	Systems Administrator	28,725	28,725
	Technical Services Assistant	23,088	23,088
	Technical Services Librarian	23,982	23,982
	Technology Librarian	29,453	29,453
	Youth Services Librarian	29,848	19,240
	Youth Worker	12,792	12,792

Salaries - SFY 2007

<i>population category</i>	<i>position</i>	<i>high</i>	<i>low</i>
Over 25,000			
	Library Director	97,157	31,200
	Assistant Director	77,293	46,509
	Branch Librarian	42,203	27,498
	Information Services Manager	38,376	38,376
	Acquisitions/Periodicals	41,163	41,163
	Administrative Assistant	33,550	24,190
	Administrative Coordinator	52,416	52,416
	Adult Services Librarian	42,661	42,661
	Bookmobile Librarian	41,163	41,163
	Business Manager	45,365	40,789
	Cataloger	46,342	41,600
	Cataloging Technician	34,819	34,819
	Chief Financial Officer	56,160	56,160
	Circulation Clerk	34,424	19,510
	Circulation Librarian	48,838	22,568
	Circulation Supervisor	38,272	30,118
	Collection Management Librarian	49,005	41,038
	Computer Services Librarian	30,950	30,950
	Coordinator of Volunteer Services	37,669	37,669
	Custodian	30,971	27,518
	Interlibrary Loan Librarian	43,680	37,253
	Interlibrary Loan Technician	32,469	21,320
	Librarian	38,875	32,614
	Library Aide	22,318	20,134
	Library Assistant	34,424	20,176
	Library Associate	25,189	25,126
	Library Clerk	21,965	17,534
	Library Page	18,054	15,454
	Library Specialist	30,264	21,320
	Library Systems Manager	56,222	56,222
	Library Technician	31,054	22,173
	Network Manager	51,168	49,338
	Outreach Librarian	43,680	43,680
	Reference Librarian	50,981	30,534
	Substitute Librarian	25,917	20,384
	Systems Librarian	43,680	43,680
	Systems Specialist	30,930	30,930
	Technical Services and Systems Supervisor	46,654	46,654
	Technical Services Assistant	24,024	24,024
	Technical Services Clerk	28,954	17,534
	Technical Services Director	30,181	30,181
	Technical Services Librarian	45,614	45,614
	Technical Services Technician	29,578	23,026
	Technology Librarian	38,875	38,875
	Web Developer/Database Specialist	37,731	37,731
	Youth Services Librarian	49,005	23,213

Average Salary Per Population Group

Over 25,000	36,172
10,000 - 24,999	23,822
5,000 - 9,999	19,484
3,500 - 4,999	20,077
2,000 - 3,499	19,294
1,200 - 1,999	16,581
1,199 and Under	18,501

Statewide Mean for Yearly Salaries - SFY 2007

<i>position</i>	<i>number of positions reported</i>	<i>mean yearly salary</i>
Academy Director	4	14,144
Acquisitions/Periodicals	4	41,163
Administrative Assistant	24	26,853
Administrative Coordinator	4	52,416
Adult Basic Education Teacher	4	21,320
Adult Services Librarian	8	39,998
Archivist	4	22,880
Assistant Director	40	32,906
Assistant Librarian	124	19,240
Bookmobile Librarian	8	31,720
Branch Librarian	128	26,094
Business Manager	8	43,077
Cataloger	16	32,240
Cataloging Technician	12	22,651
Chief Financial Officer	4	56,160
Circulation Clerk	116	22,734
Circulation Librarian	48	24,024
Circulation Supervisor	8	34,195
Collection Management Librarian	16	32,760
Community Librarian	8	15,340
Computer Services Librarian	4	30,950
Coordinator of Volunteer Services	4	37,669
Custodian	24	27,726
Information Services Librarian	4	21,320
Information Services Manager	4	38,376
Information Systems Technician	4	33,696
Interlibrary Loan Librarian	12	37,253
Interlibrary Loan Technician	24	26,437
Librarian	28	24,960
Library Aide	116	17,742
Library Assistant	224	20,779
Library Associate	16	21,247
Library Clerk	136	19,136
Library Director	324	29,120
Library High School Staff Member	4	43,680
Library Page	84	17,056
Library Specialist	40	24,159
Library Staff Member	28	19,989
Library Systems Manager	4	56,222
Library Technician	76	24,336
Network Manager	12	49,338
Outreach Librarian	4	43,680
Photograph Archivist	4	13,520
Public Services Librarian	20	28,995
Reference Librarian	60	35,069
Special Librarian	4	20,800
Substitute Librarian	72	20,457
Systems Administrator	4	28,725
Systems Librarian	4	43,680
Systems Specialist	4	30,930
Technical Services and Systems Supervisor	4	46,654
Technical Services Assistant	8	23,556
Technical Services Clerk	12	24,731
Technical Services Director	8	23,514
Technical Services Librarian	8	34,798
Technical Services Technician	12	24,294
Technology Librarian	8	34,164
Web Developer/Database Specialist	4	37,731
Youth Services Librarian	104	29,089
Youth Worker	4	12,792

Library Income - SFY 2007

county	library	city/district	Local Income		State Income Thru Federations coal severance
			county	local total	
Beaverhead	Dillon Public Library	77,432	32,200	109,632	1,438
Big Horn	Big Horn County Public Library	0	268,434	268,434	1,186
Blaine	Blaine County Library	0	107,650	107,650	1,657
	Harlem Public Library	0	75,450	75,450	1,427
Broadwater	Broadwater School and Community Library	90,781	51,656	142,437	1,438
Carbon	Bridger Public Library	4,227	20,233	24,460	1,324
	Joliet Public Library	0	17,354	17,354	1,798
	Red Lodge Carnegie Library	47,769	39,877	87,646	1,984
Carter	Ekalaka Public Library	5,927	7,000	12,927	1,324
Cascade	Belt Public Library	2,000	13,000	15,000	1,657
	Great Falls Public Library	866,304	160,000	1,026,304	1,657
	Wedsworth Memorial Library	0	13,000	13,000	1,859
Chouteau	Chouteau County Library	0	196,586	196,586	1,657
Custer	Miles City Public Library	238,500	36,414	274,914	1,285
Daniels	Daniels County Library	0	60,406	60,406	2,807
Dawson	Glendive Public Library	0	145,375	145,375	1,285
Deer Lodge	Hearst Free Library	0	139,549	139,549	1,620
Fallon	Fallon County Library	0	140,408	140,408	1,324
Fergus	Denton Public Library	3,933	3,000	6,933	1,500
	Dorothy Asbjornson Community Library	0	3,000	3,000	1,556
	Lewistown Public Library	176,000	40,000	216,000	1,459
	Moore Public Library	0	3,000	3,000	1,578
Flathead	Flathead County Library	0	1,198,619	1,198,619	2,584
Gallatin	Belgrade Community Library	63,324	95,202	158,526	1,038
	Bozeman Public Library	714,456	420,452	1,134,908	1,438
	Manhattan Community Library	75,567	37,426	112,993	1,438
	Three Forks Community Library	16,928	37,025	53,953	1,438
	West Yellowstone Public Library	70,104	35,814	105,918	1,437
Garfield	Garfield County Library	0	16,362	16,362	1,285
Glacier	Glacier County Library	0	188,668	188,668	1,657
Granite	Drummond School Community Library	36,305	1,583	37,888	1,437
	Philipsburg Public Library	10,141	0	10,141	1,147
Hill	Havre-Hill County Library	138,295	113,151	251,446	1,657
Jefferson	Boulder Community Library	3,200	406,145	409,345	1,438
Judith Basin	Judith Basin County Free Library	0	63,823	63,823	1,832
Lake	Polson City Library	151,500	15,315	166,815	2,536
	Ronan City Library	50,759	11,057	61,816	2,534
	St Ignatius School-Community Library	498	7,428	7,926	2,557
Lewis and Clark	Lewis and Clark Library	0	2,411,618	2,411,618	6,412
Liberty	Liberty County Library	0	77,515	77,515	1,657
Lincoln	Lincoln County Public Libraries	0	316,613	316,613	2,659
Madison	Madison Valley Public Library	11,564	22,391	33,955	1,438
	Sheridan Public Library	10,815	22,391	33,206	1,438
	Thompson-Hickman County Library	1,500	74,221	75,721	1,464
	Twin Bridges Public Library	4,000	22,391	26,391	1,620
McCone	George McCone Memorial County Library	0	40,796	40,796	1,285

Library Income - SFY 2007

<i>Per Capita/ Sq Mile</i>	<i>State Income InterLibrary Loan</i>	<i>state total</i>	<i>federal income</i>	<i>other income</i>	<i>grand total income</i>	<i>service population</i>	<i>per capita</i>
1,447	270	3,155	0	5,488	118,275	9,202	12.85
1,734	1,039	3,959	0	0	272,393	12,671	21.50
683	1,665	4,005	0	150	111,805	4,299	26.01
419	519	2,365	0	0	77,815	2,710	28.71
547	40	2,025	0	6,685	151,147	4,385	34.47
270	0	1,594	0	1,899	27,953	2,259	12.37
263	0	2,061	0	0	19,415	2,210	8.79
605	0	2,589	0	4,057	94,292	5,083	18.55
461	0	1,785	0	4,339	19,051	1,360	14.01
152	0	1,809	0	2,000	18,809	1,522	12.36
7,829	1,164	10,650	10,976	316,316	1,364,246	77,128	17.69
170	31	2,060	0	7,090	22,150	1,708	12.97
976	375	3,008	0	0	199,594	5,970	33.43
1,519	1,229	4,033	0	0	278,947	11,696	23.85
338	7	3,152	0	1,145	64,703	2,017	32.08
1,222	248	2,755	0	2,887	151,017	9,059	16.67
996	13,354	15,970	0	64,898	220,417	9,417	23.41
437	154	1,915	0	2,000	144,323	2,837	50.87
40	0	1,540	0	0	8,473	301	28.15
21	0	1,577	0	7,474	12,051	156	77.25
1,507	811	3,777	0	62,477	282,254	11,250	25.09
0	0	1,578	0	688	5,266	186	28.31
7,809	27,954	38,347	5,941	40,354	1,283,261	74,471	17.23
1,038	1,317	3,393	0	21,790	183,709	10,272	17.88
4,881	1,530	7,849	0	0	1,142,757	47,805	23.90
325	0	1,763	0	5,358	120,114	3,214	37.37
358	1,374	3,170	0	11,447	68,570	3,546	19.34
325	2,004	3,766	0	6,757	116,441	2,995	38.88
584	0	1,869	0	6,116	24,347	1,279	19.04
1,594	222	3,473	0	3,700	195,841	13,247	14.78
146	6,238	7,821	0	0	45,709	1,117	40.92
300	0	1,447	0	1,278	12,866	1,713	7.51
1,920	1,859	5,436	1,425	0	258,307	16,673	15.49
640	640	2,718	0	5,000	417,063	10,049	41.50
412	286	2,530	0	0	66,353	2,329	28.49
1,223	2,992	6,751	0	62,422	235,988	11,789	20.02
907	331	3,772	0	10,201	75,789	8,765	8.65
1,100	0	3,657	0	150	11,733	5,953	1.97
5,808	1,738	13,958	0	179,688	2,605,264	55,716	46.76
352	938	2,947	0	0	80,462	2,158	37.29
2,203	401	5,263	0	17,700	339,576	18,837	18.03
252	237	1,927	0	13,377	49,259	1,129	43.63
213	0	1,651	504	7,008	42,369	948	44.69
426	50	1,940	0	2,251	79,912	4,084	19.57
135	0	1,755	0	1,200	29,346	689	42.59
453	155	1,893	0	0	42,689	1,977	21.59

Library Income - SFY 2007

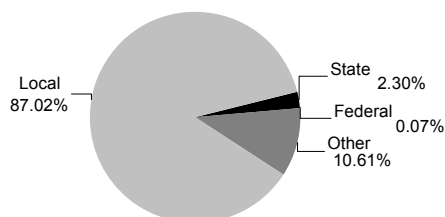
county	library	city/district	Local Income		State Income Thru Federations coal severance
			county	local total	
Meagher	Meagher County/City Library	12,274	56,935	69,209	852
Mineral	Mineral County Public Library	0	51,834	51,834	2,584
Missoula	Missoula Public Library	0	2,038,753	2,038,753	2,534
Musselshell	Roundup School-Community Library	90,803	4,000	94,803	1,362
Park	Livingston-Park County Public Library	155,206	161,811	317,017	1,438
Petroleum	Petroleum County School-Community Library	24,950	17,560	42,510	1,449
Phillips	Phillips County Library	0	75,900	75,900	4,107
Pondera	Conrad Public Library	23,359	76,623	99,982	1,657
	Valier Public Library	0	59,430	59,430	1,812
Powder River	Henry A Malley Memorial Library	0	50,284	50,284	1,285
Powell	William K. Kohrs Memorial Library	59,300	4,000	63,300	1,438
Prairie	Prairie County Library	0	30,257	30,257	1,285
Ravalli	Bitterroot Public Library	285,705	10,663	296,368	5,582
	Darby Community Public Library	39,436	3,757	43,193	2,585
	North Valley Public Library	101,207	0	101,207	2,534
Richland	Sidney-Richland County Library	80,000	121,072	201,072	4,034
Roosevelt	Roosevelt County Library	17,503	296,520	314,023	2,807
Rosebud	Rosebud County Library	0	144,060	144,060	1,285
Sanders	Plains Public Library District	9,011	61,328	70,339	2,534
	Preston Town County Library	3,192	19,392	22,584	2,535
	Thompson Falls Public Library	53,985	12,764	66,749	2,535
Sheridan	Sheridan County Library	0	123,041	123,041	2,808
Silver Bow	Butte-Silver Bow Public Library	0	174,061	174,061	1,464
Stillwater	Stillwater County Library	0	136,818	136,818	1,365
Sweet Grass	Carnegie Public Library	52,711	31,484	84,195	1,437
Teton	Choteau/Teton Public Library	8,655	44,296	52,951	1,657
	Dutton Public Library	0	24,265	24,265	1,657
	Fairfield Public Library	4,384	21,656	26,040	736
Toole	Toole County Library	0	107,250	107,250	1,657
Valley	Glasgow City-County Library	23,781	118,905	142,686	2,807
Wheatland	Harlowton Public Library	54,755	6,484	61,239	1,435
Wibaux	Wibaux Public Library	0	40,843	40,843	1,318
Yellowstone	Laurel Public Library	133,093	0	133,093	1,299
	Parmly Billings Library	1,713,790	508,897	2,222,687	1,273
Statewide Totals		5,818,929	11,844,541	17,663,470	149,393

Library Income - SFY 2007

Per Capita/ Sq Mile	State Income		federal income	other income	grand total income	service population	per capita
	InterLibrary Loan	state total					
424	354	1,630	0	1,881	72,720	1,932	37.64
501	2,151	5,236	0	4,601	61,671	3,884	15.88
9,657	60,690	72,881	0	52,269	2,163,903	95,802	22.59
625	138	2,125	0	6,087	103,015	4,497	22.91
1,801	124	3,363	0	19,790	340,170	15,694	21.68
211	63	1,723	0	4,000	48,233	493	97.84
956	1	5,064	0	2,574	83,538	4,601	18.16
577	618	2,852	0	6,500	109,334	4,498	24.31
213	0	2,025	0	24,840	86,295	1,926	44.81
506	46	1,837	0	5,664	57,785	1,858	31.10
933	1,100	3,471	0	7,391	74,162	7,180	10.33
288	106	1,679	0	5,489	37,425	1,199	31.21
2,406	7,677	15,665	0	79,728	391,761	23,844	16.43
518	0	3,103	0	29,421	75,717	3,907	19.38
851	0	3,385	0	44,156	148,748	8,319	17.88
1,153	1,125	6,312	317	7,328	215,029	9,667	22.24
1,274	997	5,078	0	10,078	329,179	10,620	31.00
1,412	3,006	5,703	0	74,315	224,078	9,383	23.88
443	389	3,366	0	5,914	79,619	3,808	20.91
235	0	2,770	0	7,944	33,298	1,691	19.69
598	0	3,133	0	14,307	84,189	4,728	17.81
567	424	3,799	0	2,956	129,796	4,105	31.62
3,467	2,252	7,183	0	13,036	194,280	34,606	5.61
980	74	2,419	0	2,383	141,620	8,195	17.28
536	121	2,094	0	1,436	87,725	3,609	24.31
428	107	2,192	0	12,863	68,006	3,444	19.75
214	0	1,871	0	2,290	28,426	1,401	20.29
214	13	963	0	4,800	31,803	1,599	19.89
704	0	2,361	0	5,732	115,343	5,267	21.90
1,236	932	4,975	0	5,914	153,575	7,675	20.01
363	0	1,798	0	11,003	74,040	2,269	32.63
192	605	2,115	0	574	43,532	1,068	40.76
632	10	1,941	0	10,602	145,636	6,255	23.28
12,322	744	14,339	5,735	436,408	2,679,169	123,097	21.76

102,477 155,039 406,909 24,898 1,809,664 19,904,941 900,302 22.11

Percentage of Total Statewide Income



Top 5: Income Per Capita

Petroleum County School-Community Library	97.84
Dorothy Asbjornson Community Library	77.25
Fallon County Library	50.87
Lewis and Clark Library	46.76
Valier Public Library	44.81

Library Income by Service Area Population - 2007

county	library	city/district	Local Income		State Income Thru Federations coal severance
			county	local total	
Over 25,000					
Gallatin	Bozeman Public Library	714,456	420,452	1,134,908	1,438
Silver Bow	Butte-Silver Bow Public Library	0	174,061	174,061	1,464
Flathead	Flathead County Library	0	1,198,619	1,198,619	2,584
Cascade	Great Falls Public Library	866,304	160,000	1,026,304	1,657
Lewis and Clark	Lewis and Clark Library	0	2,411,618	2,411,618	6,412
Missoula	Missoula Public Library	0	2,038,753	2,038,753	2,534
Yellowstone	Parmly Billings Library	1,713,790	508,897	2,222,687	1,273
	subtotals	3,294,550	6,912,400	10,206,950	17,362
10,000 - 24,999					
Gallatin	Belgrade Community Library	63,324	95,202	158,526	1,038
Big Horn	Big Horn County Public Library	0	268,434	268,434	1,186
Ravalli	Bitterroot Public Library	285,705	10,663	296,368	5,582
Jefferson	Boulder Community Library	3,200	406,145	409,345	1,438
Glacier	Glacier County Library	0	188,668	188,668	1,657
Hill	Havre-Hill County Library	138,295	113,151	251,446	1,657
Fergus	Lewistown Public Library	176,000	40,000	216,000	1,459
Lincoln	Lincoln County Public Libraries	0	316,613	316,613	2,659
Park	Livingston-Park County Public Library	155,206	161,811	317,017	1,438
Custer	Miles City Public Library	238,500	36,414	274,914	1,285
Lake	Polson City Library	151,500	15,315	166,815	2,536
Roosevelt	Roosevelt County Library	17,503	296,520	314,023	2,807
	subtotals	1,229,233	1,948,936	3,178,169	24,742
5,000 - 9,999					
Chouteau	Chouteau County Library	0	196,586	196,586	1,657
Beaverhead	Dillon Public Library	77,432	32,200	109,632	1,438
Valley	Glasgow City-County Library	23,781	118,905	142,686	2,807
Dawson	Glendive Public Library	0	145,375	145,375	1,285
Deer Lodge	Hearst Free Library	0	139,549	139,549	1,620
Yellowstone	Laurel Public Library	133,093	0	133,093	1,299
Ravalli	North Valley Public Library	101,207	0	101,207	2,534
Carbon	Red Lodge Carnegie Library	47,769	39,877	87,646	1,984
Lake	Ronan City Library	50,759	11,057	61,816	2,534
Rosebud	Rosebud County Library	0	144,060	144,060	1,285
Richland	Sidney-Richland County Library	80,000	121,072	201,072	4,034
Lake	St Ignatius School-Community Library	498	7,428	7,926	2,557
Stillwater	Stillwater County Library	0	136,818	136,818	1,365
Toole	Toole County Library	0	107,250	107,250	1,657
Powell	William K. Kohrs Memorial Library	59,300	4,000	63,300	1,438
	subtotals	573,839	1,204,177	1,778,016	29,494
3,500 - 4,999					
Blaine	Blaine County Library	0	107,650	107,650	1,657
Broadwater	Broadwater School and Community Library	90,781	51,656	142,437	1,438
Sweet Grass	Carnegie Public Library	52,711	31,484	84,195	1,437
Pondera	Conrad Public Library	23,359	76,623	99,982	1,657
Ravalli	Darby Community Public Library	39,436	3,757	43,193	2,585
Mineral	Mineral County Public Library	0	51,834	51,834	2,584
Phillips	Phillips County Library	0	75,900	75,900	4,107
Sanders	Plains Public Library District	9,011	61,328	70,339	2,534
Musselshell	Roundup School-Community Library	90,803	4,000	94,803	1,362
Sheridan	Sheridan County Library	0	123,041	123,041	2,808
Sanders	Thompson Falls Public Library	53,985	12,764	66,749	2,535
Madison	Thompson-Hickman County Library	1,500	74,221	75,721	1,464
Gallatin	Three Forks Community Library	16,928	37,025	53,953	1,438
	subtotals	378,514	711,283	1,089,797	27,606

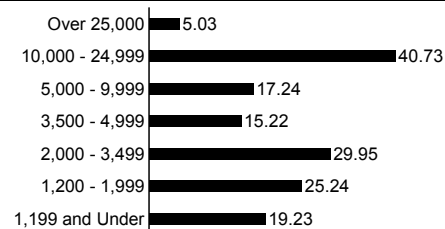
Library Income by Service Population - SFY 2007

<i>Per Capita/ Sq Mile</i>	<i>State Income InterLibrary Loan</i>	<i>state total</i>	<i>federal income</i>	<i>other income</i>	<i>grand total income</i>	<i>service population</i>	<i>income per capita</i>
Over 25,000							
4,881	1,530	7,849	0	0	1,142,757	47,805	23.90
3,467	2,252	7,183	0	13,036	194,280	34,606	5.61
7,809	27,954	38,347	5,941	40,354	1,283,261	74,471	17.23
7,829	1,164	10,650	10,976	316,316	1,364,246	77,128	17.69
5,808	1,738	13,958	0	179,688	2,605,264	55,716	46.76
9,657	60,690	72,881	0	52,269	2,163,903	95,802	22.59
12,322	744	14,339	5,735	436,408	2,679,169	123,097	21.76
51,773	96,072	165,207	22,652	1,038,071	11,432,880	508,625	22.48
10,000 - 24,999							
1,038	1,317	3,393	0	21,790	183,709	10,272	17.88
1,734	1,039	3,959	0	0	272,393	12,671	21.50
2,406	7,677	15,665	0	79,728	391,761	23,844	16.43
640	640	2,718	0	5,000	417,063	10,049	41.50
1,594	222	3,473	0	3,700	195,841	13,247	14.78
1,920	1,859	5,436	1,425	0	258,307	16,673	15.49
1,507	811	3,777	0	62,477	282,254	11,250	25.09
2,203	401	5,263	0	17,700	339,576	18,837	18.03
1,801	124	3,363	0	19,790	340,170	15,694	21.68
1,519	1,229	4,033	0	0	278,947	11,696	23.85
1,223	2,992	6,751	0	62,422	235,988	11,789	20.02
1,274	997	5,078	0	10,078	329,179	10,620	31.00
18,859	19,308	62,909	1,425	282,685	3,525,188	166,642	21.15
5,000 - 9,999							
976	375	3,008	0	0	199,594	5,970	33.43
1,447	270	3,155	0	5,488	118,275	9,202	12.85
1,236	932	4,975	0	5,914	153,575	7,675	20.01
1,222	248	2,755	0	2,887	151,017	9,059	16.67
996	13,354	15,970	0	64,898	220,417	9,417	23.41
632	10	1,941	0	10,602	145,636	6,255	23.28
851	0	3,385	0	44,156	148,748	8,319	17.88
605	0	2,589	0	4,057	94,292	5,083	18.55
907	331	3,772	0	10,201	75,789	8,765	8.65
1,412	3,006	5,703	0	74,315	224,078	9,383	23.88
1,153	1,125	6,312	317	7,328	215,029	9,667	22.24
1,100	0	3,657	0	150	11,733	5,953	1.97
980	74	2,419	0	2,383	141,620	8,195	17.28
704	0	2,361	0	5,732	115,343	5,267	21.90
933	1,100	3,471	0	7,391	74,162	7,180	10.33
15,154	20,825	65,473	317	245,502	2,089,308	115,390	18.11
3,500 - 4,999							
683	1,665	4,005	0	150	111,805	4,299	26.01
547	40	2,025	0	6,685	151,147	4,385	34.47
536	121	2,094	0	1,436	87,725	3,609	24.31
577	618	2,852	0	6,500	109,334	4,498	24.31
518	0	3,103	0	29,421	75,717	3,907	19.38
501	2,151	5,236	0	4,601	61,671	3,884	15.88
956	1	5,064	0	2,574	83,538	4,601	18.16
443	389	3,366	0	5,914	79,619	3,808	20.91
625	138	2,125	0	6,087	103,015	4,497	22.91
567	424	3,799	0	2,956	129,796	4,105	31.62
598	0	3,133	0	14,307	84,189	4,728	17.81
426	50	1,940	0	2,251	79,912	4,084	19.57
358	1,374	3,170	0	11,447	68,570	3,546	19.34
7,335	6,971	41,912	0	94,329	1,226,038	53,951	22.73

Library Income by Service Area Population - 2007

county	library	city/district	Local Income		State Income Thru Federations coal severance
			county	local total	
2,000 - 3,499					
Carbon	Bridger Public Library	4,227	20,233	24,460	1,324
Teton	Choteau/Teton Public Library	8,655	44,296	52,951	1,657
Daniels	Daniels County Library	0	60,406	60,406	2,807
Fallon	Fallon County Library	0	140,408	140,408	1,324
Blaine	Harlem Public Library	0	75,450	75,450	1,427
Wheatland	Harlowton Public Library	54,755	6,484	61,239	1,435
Carbon	Joliet Public Library	0	17,354	17,354	1,798
Judith Basin	Judith Basin County Free Library	0	63,823	63,823	1,832
Liberty	Liberty County Library	0	77,515	77,515	1,657
Gallatin	Manhattan Community Library	75,567	37,426	112,993	1,438
Gallatin	West Yellowstone Public Library	70,104	35,814	105,918	1,437
subtotals		213,308	579,209	792,517	18,136
1,200 - 1,999					
Cascade	Belt Public Library	2,000	13,000	15,000	1,657
Teton	Dutton Public Library	0	24,265	24,265	1,657
Carter	Ekalaka Public Library	5,927	7,000	12,927	1,324
Teton	Fairfield Public Library	4,384	21,656	26,040	736
Garfield	Garfield County Library	0	16,362	16,362	1,285
McCone	George McCone Memorial County Library	0	40,796	40,796	1,285
Powder River	Henry A Malley Memorial Library	0	50,284	50,284	1,285
Meagher	Meagher County/City Library	12,274	56,935	69,209	852
Granite	Philipsburg Public Library	10,141	0	10,141	1,147
Prairie	Prairie County Library	0	30,257	30,257	1,285
Sanders	Preston Town County Library	3,192	19,392	22,584	2,535
Pondera	Valier Public Library	0	59,430	59,430	1,812
Cascade	Wedsworth Memorial Library	0	13,000	13,000	1,859
subtotals		37,918	352,377	390,295	18,719
1,199 and Under					
Fergus	Denton Public Library	3,933	3,000	6,933	1,500
Fergus	Dorothy Asbjornson Community Library	0	3,000	3,000	1,556
Granite	Drummond School Community Library	36,305	1,583	37,888	1,437
Madison	Madison Valley Public Library	11,564	22,391	33,955	1,438
Fergus	Moore Public Library	0	3,000	3,000	1,578
Petroleum	Petroleum County School-Community Library	24,950	17,560	42,510	1,449
Madison	Sheridan Public Library	10,815	22,391	33,206	1,438
Madison	Twin Bridges Public Library	4,000	22,391	26,391	1,620
Wibaux	Wibaux Public Library	0	40,843	40,843	1,318
subtotals		91,567	136,159	227,726	13,334
Statewide Totals		5,818,929	11,844,541	17,663,470	149,393

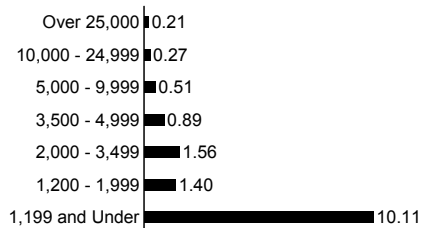
Local Income Per Capita by Service Population



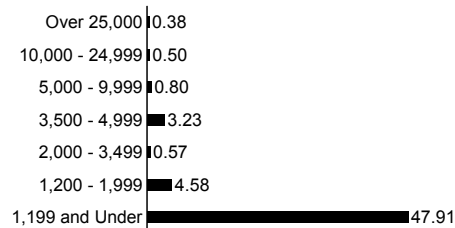
Library Income by Service Population - SFY 2007

<i>Per Capita/ Sq Mile</i>	<i>State Income InterLibrary Loan</i>	<i>state total</i>	<i>federal income</i>	<i>other income</i>	<i>grand total income</i>	<i>service population</i>	<i>income per capita</i>
2,000 - 3,499							
270	0	1,594	0	1,899	27,953	2,259	12.37
428	107	2,192	0	12,863	68,006	3,444	19.75
338	7	3,152	0	1,145	64,703	2,017	32.08
437	154	1,915	0	2,000	144,323	2,837	50.87
419	519	2,365	0	0	77,815	2,710	28.71
363	0	1,798	0	11,003	74,040	2,269	32.63
263	0	2,061	0	0	19,415	2,210	8.79
412	286	2,530	0	0	66,353	2,329	28.49
352	938	2,947	0	0	80,462	2,158	37.29
325	0	1,763	0	5,358	120,114	3,214	37.37
325	2,004	3,766	0	6,757	116,441	2,995	38.88
3,932	4,015	26,083	0	41,025	859,625	28,442	30.22
1,200 - 1,999							
152	0	1,809	0	2,000	18,809	1,522	12.36
214	0	1,871	0	2,290	28,426	1,401	20.29
461	0	1,785	0	4,339	19,051	1,360	14.01
214	13	963	0	4,800	31,803	1,599	19.89
584	0	1,869	0	6,116	24,347	1,279	19.04
453	155	1,893	0	0	42,689	1,977	21.59
506	46	1,837	0	5,664	57,785	1,858	31.10
424	354	1,630	0	1,881	72,720	1,932	37.64
300	0	1,447	0	1,278	12,866	1,713	7.51
288	106	1,679	0	5,489	37,425	1,199	31.21
235	0	2,770	0	7,944	33,298	1,691	19.69
213	0	2,025	0	24,840	86,295	1,926	44.81
170	31	2,060	0	7,090	22,150	1,708	12.97
4,214	705	23,638	0	73,731	487,664	21,165	23.04
1,199 and Under							
40	0	1,540	0	0	8,473	301	28.15
21	0	1,577	0	7,474	12,051	156	77.25
146	6,238	7,821	0	0	45,709	1,117	40.92
252	237	1,927	0	13,377	49,259	1,129	43.63
0	0	1,578	0	688	5,266	186	28.31
211	63	1,723	0	4,000	48,233	493	97.84
213	0	1,651	504	7,008	42,369	948	44.69
135	0	1,755	0	1,200	29,346	689	42.59
192	605	2,115	0	574	43,532	1,068	40.76
1,210	7,143	21,687	504	34,321	284,238	6,087	46.70
102,477	155,039	406,909	24,898	1,809,664	19,904,941	900,302	22.11

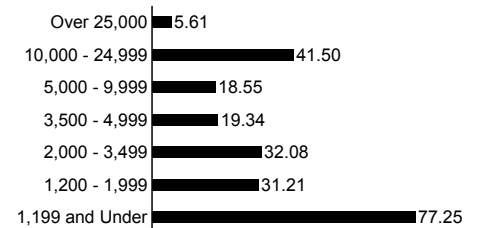
**State Income Per Capita
by Service Population**



**Other Income Per Capita
by Service Population**



**Total Income Per Capita
by Service Population**



Library Expenditures - SFY 2007

<i>county</i>	<i>library</i>	<i>salaries</i>	<i>benefits</i>	<i>continuing education</i>
Beaverhead	Dillon Public Library	63,464	5,694	2,540
Big Horn	Big Horn County Public Library	101,172	41,278	0
Blaine	Blaine County Library	42,613	14,204	1,389
	Harlem Public Library	22,808	12,885	1,521
Broadwater	Broadwater School and Community Library	93,427	24,125	907
Carbon	Bridger Public Library	14,257	1,182	270
	Joliet Public Library	7,766	0	699
	Red Lodge Carnegie Library	38,644	11,556	1,600
Carter	Ekalaka Public Library	9,340	0	338
Cascade	Belt Public Library	8,724	184	193
	Great Falls Public Library	565,173	301,632	4,464
	Wedsworth Memorial Library	11,580	2,831	868
Chouteau	Chouteau County Library	95,635	5,100	1,000
Custer	Miles City Public Library	141,711	46,864	0
Daniels	Daniels County Library	36,509	13,675	250
Dawson	Glendive Public Library	100,518	9,468	2,599
Deer Lodge	Hearst Free Library	87,650	27,378	1,500
Fallon	Fallon County Library	77,924	21,710	1,194
Fergus	Denton Public Library	4,059	0	0
	Dorothy Asbjornson Community Library	5,604	490	410
	Lewistown Public Library	157,774	49,831	5,810
	Moore Public Library	4,797	0	300
Flathead	Flathead County Library	829,036	22,628	11,888
Gallatin	Belgrade Community Library	91,344	27,558	1,179
	Bozeman Public Library	663,009	240,259	4,670
	Manhattan Community Library	80,755	17,210	400
	Three Forks Community Library	35,481	6,889	890
	West Yellowstone Public Library	70,000	23,000	2,000
Garfield	Garfield County Library	13,541	7,341	890
Glacier	Glacier County Library	87,310	31,332	1,991
Granite	Drummond School Community Library	13,195	765	143
	Philipsburg Public Library	8,000	0	1,500
Hill	Havre-Hill County Library	133,158	52,193	1,500
Jefferson	Boulder Community Library	111,037	34,619	2,413
Judith Basin	Judith Basin County Free Library	38,985	3,228	1,250
Lake	Polson City Library	99,385	33,181	4,329
	Ronan City Library	40,956	6,529	738
	St Ignatius School-Community Library	6,540	0	635
Lewis and Clark	Lewis and Clark Library	996,206	239,101	17,770
Liberty	Liberty County Library	40,686	5,908	959
Lincoln	Lincoln County Public Libraries	198,071	29,163	647
Madison	Madison Valley Public Library	32,361	3,496	400
	Sheridan Public Library	21,199	3,372	587
	Thompson-Hickman County Library	45,671	7,532	1,164
	Twin Bridges Public Library	10,061	5,346	804
McCone	George McCone Memorial County Library	21,136	3,960	300

Library Expenditures - SFY 2007

<i>print collection</i>	<i>electronic materials</i>	<i>other materials</i>	<i>other operating</i>	<i>total expenses</i>	<i>capital outlay</i>	<i>service area population</i>	<i>per capita</i>
14,380	4,038	0	15,690	105,806	0	9,202	11.50
35,820	36,299	0	53,865	268,434	0	12,671	21.18
17,256	2,379	0	18,816	96,657	0	4,299	22.48
11,946	1,805	0	10,196	61,161	0	2,710	22.57
10,051	2,542	3,135	8,352	142,539	0	4,385	32.51
5,147	260	1,553	3,519	26,188	1,642	2,259	11.59
1,100	221	0	8,907	18,693	0	2,210	8.46
4,500	1,280	1,500	17,360	76,440	5,388	5,083	15.04
3,060	430	0	5,538	18,706	0	1,360	13.75
4,813	3,705	0	2,561	20,180	2,762	1,522	13.26
179,370	32,093	0	292,839	1,375,571	66,632	77,128	17.83
3,312	2,460	0	16,679	37,730	0	1,708	22.09
24,000	10,000	5,000	30,100	170,835	0	5,970	28.62
14,000	0	0	0	202,575	0	11,696	17.32
9,758	0	0	4,511	64,703	0	2,017	32.08
15,000	1,615	0	41,310	170,510	0	9,059	18.82
29,791	1,000	0	40,000	187,319	5,000	9,417	19.89
12,811	2,494	2,260	20,015	138,408	15,071	2,837	48.79
2,162	0	0	1,670	7,891	0	301	26.22
737	3,094	0	778	11,113	0	156	71.24
25,119	5,000	9,142	23,564	276,240	156,000	11,250	24.55
1,900	0	0	0	6,997	0	186	37.62
126,621	44,820	29,947	237,616	1,302,556	0	74,471	17.49
7,902	0	0	32,405	160,388	0	10,272	15.61
72,845	20,345	30,700	178,080	1,209,908	3,156,988	47,805	25.31
12,290	0	1,412	300	112,367	2,120	3,214	34.96
4,605	0	0	19,609	67,474	0	3,546	19.03
7,000	1,000	2,918	0	105,918	0	2,995	35.36
2,647	510	1,202	494	26,625	0	1,279	20.82
24,809	2,285	0	26,826	174,553	10,000	13,247	13.18
7,773	1,544	2,949	9,545	35,914	0	1,117	32.15
3,000	0	0	3,700	16,200	6,000	1,713	9.46
33,000	1,671	0	33,435	254,957	3,350	16,673	15.29
48,596	1,705	6,858	54,433	259,661	0	10,049	25.84
5,900	850	0	4,700	54,913	0	2,329	23.58
10,932	4,940	1,220	58,162	212,149	0	11,789	18.00
8,492	1,595	1,014	16,465	75,789	0	8,765	8.65
976	3,555	617	2,535	14,858	0	5,953	2.50
186,369	52,432	60,379	482,863	2,035,120	376,286	55,716	36.53
8,017	5,319	3,239	4,960	69,088	6,102	2,158	32.01
10,000	4,200	4,175	42,500	288,756	0	18,837	15.33
6,660	0	2,940	3,402	49,259	0	1,129	43.63
3,746	227	2,104	4,143	35,378	2,728	948	37.32
8,395	1,168	1,905	10,124	75,959	1,651	4,084	18.60
3,924	1,171	225	1,929	23,460	0	689	34.05
691	0	3,876	9,559	39,522	0	1,977	19.99

Library Expenditures - SFY 2007

<i>county</i>	<i>library</i>	<i>salaries</i>	<i>benefits</i>	<i>continuing education</i>
Meagher	Meagher County/City Library	23,064	6,259	1,213
Mineral	Mineral County Public Library	33,346	382	1,395
Missoula	Missoula Public Library	929,057	325,518	21,000
Musselshell	Roundup School-Community Library	66,303	15,503	698
Park	Livingston-Park County Public Library	174,354	55,237	2,714
Petroleum	Petroleum County School-Community Library	26,106	2,913	367
Phillips	Phillips County Library	41,500	17,100	1,297
Pondera	Conrad Public Library	61,205	15,277	700
	Valier Public Library	24,985	3,302	1,900
Powder River	Henry A Malley Memorial Library	28,653	7,100	311
Powell	William K. Kohrs Memorial Library	40,370	6,498	576
Prairie	Prairie County Library	17,944	2,858	189
Ravalli	Bitterroot Public Library	130,233	37,208	6,509
	Darby Community Public Library	26,691	4,807	1,180
	North Valley Public Library	68,192	8,252	787
Richland	Sidney-Richland County Library	128,293	26,303	1,540
Roosevelt	Roosevelt County Library	138,469	21,290	1,641
Rosebud	Rosebud County Library	124,978	23,230	4,578
Sanders	Plains Public Library District	39,414	5,401	1,993
	Preston Town County Library	18,509	1,170	873
	Thompson Falls Public Library	32,872	15,984	826
Sheridan	Sheridan County Library	60,797	10,744	2,117
Silver Bow	Butte-Silver Bow Public Library	368,575	146,838	0
Stillwater	Stillwater County Library	72,808	19,884	0
Sweet Grass	Carnegie Public Library	34,205	11,539	1,800
Teton	Choteau/Teton Public Library	29,679	4,387	0
	Dutton Public Library	12,195	1,751	60
	Fairfield Public Library	16,302	902	500
Toole	Toole County Library	42,592	14,658	1,147
Valley	Glasgow City-County Library	67,706	11,947	1,625
Wheatland	Harlowton Public Library	29,527	8,002	10
Wibaux	Wibaux Public Library	24,624	3,919	500
Yellowstone	Laurel Public Library	76,998	19,512	414
	Parmly Billings Library	1,126,343	366,013	5,662
Statewide Totals		9,515,161	2,616,385	153,021

Library Expenditures - SFY 2007

<i>print collection</i>	<i>electronic materials</i>	<i>other materials</i>	<i>other operating</i>	<i>total expenses</i>	<i>capital outlay</i>	<i>service area population</i>	<i>per capita</i>
578	4,431	6,940	14,533	57,018	0	1,932	29.51
11,296	1,108	777	13,367	61,671	0	3,884	15.88
202,000	25,000	66,900	415,290	1,984,765	3,319,021	95,802	20.72
10,945	665	1,405	0	95,519	1,155	4,497	21.24
29,006	3,446	9,765	66,001	340,523	0	15,694	21.70
9,500	780	5,000	700	45,366	1,767	493	92.02
7,950	1,291	1,592	7,474	78,204	2,964	4,601	17.00
9,778	1,000	1,000	14,265	103,225	19,664	4,498	22.95
8,127	0	0	15,236	53,550	11,847	1,926	27.80
6,405	524	0	10,217	53,210	0	1,858	28.64
10,392	1,730	0	16,126	75,692	15,228	7,180	10.54
5,387	0	696	8,217	35,291	1,445	1,199	29.43
37,135	1,753	0	84,800	297,638	0	23,844	12.48
12,003	800	0	24,523	70,004	30,190	3,907	17.92
135	350	11,256	27,701	116,673	1,375	8,319	14.02
13,400	3,685	5,033	42,032	220,286	0	9,667	22.79
37,185	8,487	6,396	48,628	262,096	0	10,620	24.68
29,337	1,918	1,728	26,857	212,626	8,165	9,383	22.66
8,485	524	1,174	22,634	79,625	0	3,808	20.91
4,100	615	0	3,060	28,327	373	1,691	16.75
7,305	524	0	44,607	102,118	0	4,728	21.60
19,629	2,169	0	16,089	111,545	0	4,105	27.17
47,182	7,664	20,302	90,715	681,276	0	34,606	19.69
15,724	0	0	14,553	122,969	0	8,195	15.01
10,100	1,220	1,500	12,870	73,234	14,275	3,609	20.29
10,655	0	1,185	15,685	61,591	3,006	3,444	17.88
5,271	2,547	729	179	22,732	4,918	1,401	16.23
350	5,000	336	7,825	31,215	0	1,599	19.52
14,971	1,593	0	6,004	80,965	0	5,267	15.37
15,000	1,434	1,924	64,143	163,779	0	7,675	21.34
6,165	524	978	10,617	55,823	2,832	2,269	24.60
5,478	1,114	400	7,452	43,487	0	1,068	40.72
14,860	2,892	6,897	24,063	145,636	0	6,255	23.28
198,726	7,575	134,640	780,333	2,619,292	69,468	123,097	21.28

1,855,783 352,415 468,823 3,810,851 18,772,439 7,325,413 900,302 20.85

Top 5: Expenditures Per Capita

Petroleum County School-Community Library	92.02
Dorothy Asbjornson Community Library	71.24
Fallon County Library	48.79
Madison Valley Public Library	43.63
Wibaux Public Library	40.72

Top 5: Collection Expenditures Per Capita

Petroleum County School-Community Library	30.99
Dorothy Asbjornson Community Library	24.56
Drummond School Community Library	10.98
Moore Public Library	10.22
Madison Valley Public Library	8.50

Library Expenditures by Service Population - SFY 2007

<i>county</i>	<i>library</i>	<i>salaries</i>	<i>benefits</i>	<i>continuing education</i>
Over 25,000				
Gallatin	Bozeman Public Library	663,009	240,259	4,670
Silver Bow	Butte-Silver Bow Public Library	368,575	146,838	0
Flathead	Flathead County Library	829,036	22,628	11,888
Cascade	Great Falls Public Library	565,173	301,632	4,464
Lewis and Clark	Lewis and Clark Library	996,206	239,101	17,770
Missoula	Missoula Public Library	929,057	325,518	21,000
Yellowstone	Parmly Billings Library	1,126,343	366,013	5,662
		5,477,399	1,641,989	65,454
10,000 - 24,999				
Gallatin	Belgrade Community Library	91,344	27,558	1,179
Big Horn	Big Horn County Public Library	101,172	41,278	0
Ravalli	Bitterroot Public Library	130,233	37,208	6,509
Jefferson	Boulder Community Library	111,037	34,619	2,413
Glacier	Glacier County Library	87,310	31,332	1,991
Hill	Havre-Hill County Library	133,158	52,193	1,500
Fergus	Lewistown Public Library	157,774	49,831	5,810
Lincoln	Lincoln County Public Libraries	198,071	29,163	647
Park	Livingston-Park County Public Library	174,354	55,237	2,714
Custer	Miles City Public Library	141,711	46,864	0
Lake	Polson City Library	99,385	33,181	4,329
Roosevelt	Roosevelt County Library	138,469	21,290	1,641
		1,564,018	459,754	28,733
5,000 - 9,999				
Chouteau	Chouteau County Library	95,635	5,100	1,000
Beaverhead	Dillon Public Library	63,464	5,694	2,540
Valley	Glasgow City-County Library	67,706	11,947	1,625
Dawson	Glendive Public Library	100,518	9,468	2,599
Deer Lodge	Hearst Free Library	87,650	27,378	1,500
Yellowstone	Laurel Public Library	76,998	19,512	414
Ravalli	North Valley Public Library	68,192	8,252	787
Carbon	Red Lodge Carnegie Library	38,644	11,556	1,600
Lake	Ronan City Library	40,956	6,529	738
Rosebud	Rosebud County Library	124,978	23,230	4,578
Richland	Sidney-Richland County Library	128,293	26,303	1,540
Lake	St Ignatius School-Community Library	6,540	0	635
Stillwater	Stillwater County Library	72,808	19,884	0
Toole	Toole County Library	42,592	14,658	1,147
Powell	William K. Kohrs Memorial Library	40,370	6,498	576
		1,055,344	196,009	21,279
3,500 - 4,999				
Blaine	Blaine County Library	42,613	14,204	1,389
Broadwater	Broadwater School and Community Library	93,427	24,125	907
Sweet Grass	Carnegie Public Library	34,205	11,539	1,800
Pondera	Conrad Public Library	61,205	15,277	700
Ravalli	Darby Community Public Library	26,691	4,807	1,180
Mineral	Mineral County Public Library	33,346	382	1,395
Phillips	Phillips County Library	41,500	17,100	1,297
Sanders	Plains Public Library District	39,414	5,401	1,993
Musselshell	Roundup School-Community Library	66,303	15,503	698
Sheridan	Sheridan County Library	60,797	10,744	2,117
Sanders	Thompson Falls Public Library	32,872	15,984	826
Madison	Thompson-Hickman County Library	45,671	7,532	1,164
Gallatin	Three Forks Community Library	35,481	6,889	890
		613,525	149,487	16,356

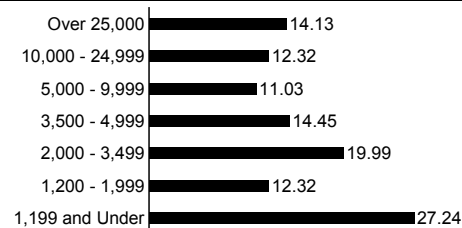
Library Expenditures by Service Population - SFY 2007

<i>print collection</i>	<i>electronic materials</i>	<i>other materials</i>	<i>other operating</i>	<i>total expenses</i>	<i>capital outlay</i>	<i>service area population</i>	<i>per capita</i>
Over 25,000							
72,845	20,345	30,700	178,080	1,209,908	3,156,988	47,805	25.31
47,182	7,664	20,302	90,715	681,276	0	34,606	19.69
126,621	44,820	29,947	237,616	1,302,556	0	74,471	17.49
179,370	32,093	0	292,839	1,375,571	66,632	77,128	17.83
186,369	52,432	60,379	482,863	2,035,120	376,286	55,716	36.53
202,000	25,000	66,900	415,290	1,984,765	3,319,021	95,802	20.72
198,726	7,575	134,640	780,333	2,619,292	69,468	123,097	21.28
1,013,113	189,929	342,868	2,477,736	11,208,488	6,988,395	508,625	22.04
10,000 - 24,999							
7,902	0	0	32,405	160,388	0	10,272	15.61
35,820	36,299	0	53,865	268,434	0	12,671	21.18
37,135	1,753	0	84,800	297,638	0	23,844	12.48
48,596	1,705	6,858	54,433	259,661	0	10,049	25.84
24,809	2,285	0	26,826	174,553	10,000	13,247	13.18
33,000	1,671	0	33,435	254,957	3,350	16,673	15.29
25,119	5,000	9,142	23,564	276,240	156,000	11,250	24.55
10,000	4,200	4,175	42,500	288,756	0	18,837	15.33
29,006	3,446	9,765	66,001	340,523	0	15,694	21.70
14,000	0	0	0	202,575	0	11,696	17.32
10,932	4,940	1,220	58,162	212,149	0	11,789	18.00
37,185	8,487	6,396	48,628	262,096	0	10,620	24.68
313,504	69,786	37,556	524,619	2,997,970	169,350	166,642	17.99
5,000 - 9,999							
24,000	10,000	5,000	30,100	170,835	0	5,970	28.62
14,380	4,038	0	15,690	105,806	0	9,202	11.50
15,000	1,434	1,924	64,143	163,779	0	7,675	21.34
15,000	1,615	0	41,310	170,510	0	9,059	18.82
29,791	1,000	0	40,000	187,319	5,000	9,417	19.89
14,860	2,892	6,897	24,063	145,636	0	6,255	23.28
135	350	11,256	27,701	116,673	1,375	8,319	14.02
4,500	1,280	1,500	17,360	76,440	5,388	5,083	15.04
8,492	1,595	1,014	16,465	75,789	0	8,765	8.65
29,337	1,918	1,728	26,857	212,626	8,165	9,383	22.66
13,400	3,685	5,033	42,032	220,286	0	9,667	22.79
976	3,555	617	2,535	14,858	0	5,953	2.50
15,724	0	0	14,553	122,969	0	8,195	15.01
14,971	1,593	0	6,004	80,965	0	5,267	15.37
10,392	1,730	0	16,126	75,692	15,228	7,180	10.54
210,958	36,685	34,969	384,939	1,940,183	35,156	115,390	16.81
3,500 - 4,999							
17,256	2,379	0	18,816	96,657	0	4,299	22.48
10,051	2,542	3,135	8,352	142,539	0	4,385	32.51
10,100	1,220	1,500	12,870	73,234	14,275	3,609	20.29
9,778	1,000	1,000	14,265	103,225	19,664	4,498	22.95
12,003	800	0	24,523	70,004	30,190	3,907	17.92
11,296	1,108	777	13,367	61,671	0	3,884	15.88
7,950	1,291	1,592	7,474	78,204	2,964	4,601	17.00
8,485	524	1,174	22,634	79,625	0	3,808	20.91
10,945	665	1,405	0	95,519	1,155	4,497	21.24
19,629	2,169	0	16,089	111,545	0	4,105	27.17
7,305	524	0	44,607	102,118	0	4,728	21.60
8,395	1,168	1,905	10,124	75,959	1,651	4,084	18.60
4,605	0	0	19,609	67,474	0	3,546	19.03
137,798	15,390	12,488	212,730	1,157,774	69,899	53,951	21.46

Library Expenditures by Service Population - SFY 2007

<i>county</i>	<i>library</i>	<i>salaries</i>	<i>benefits</i>	<i>continuing education</i>
2,000 - 3,499				
Carbon	Bridger Public Library	14,257	1,182	270
Teton	Choteau/Teton Public Library	29,679	4,387	0
Daniels	Daniels County Library	36,509	13,675	250
Fallon	Fallon County Library	77,924	21,710	1,194
Blaine	Harlem Public Library	22,808	12,885	1,521
Wheatland	Harlowton Public Library	29,527	8,002	10
Carbon	Joliet Public Library	7,766	0	699
Judith Basin	Judith Basin County Free Library	38,985	3,228	1,250
Liberty	Liberty County Library	40,686	5,908	959
Gallatin	Manhattan Community Library	80,755	17,210	400
	West Yellowstone Public Library	70,000	23,000	2,000
		448,896	111,187	8,553
1,200 - 1,999				
Cascade	Belt Public Library	8,724	184	193
Teton	Dutton Public Library	12,195	1,751	60
Carter	Ekalaka Public Library	9,340	0	338
Teton	Fairfield Public Library	16,302	902	500
Garfield	Garfield County Library	13,541	7,341	890
McCone	George McCone Memorial County Library	21,136	3,960	300
Powder River	Henry A Malley Memorial Library	28,653	7,100	311
Meagher	Meagher County/City Library	23,064	6,259	1,213
Granite	Philipsburg Public Library	8,000	0	1,500
Prairie	Prairie County Library	17,944	2,858	189
Sanders	Preston Town County Library	18,509	1,170	873
Pondera	Valier Public Library	24,985	3,302	1,900
Cascade	Wedsworth Memorial Library	11,580	2,831	868
		213,973	37,658	9,135
1,199 and Under				
Fergus	Denton Public Library	4,059	0	0
	Dorothy Asbjornson Community Library	5,604	490	410
Granite	Drummond School Community Library	13,195	765	143
Madison	Madison Valley Public Library	32,361	3,496	400
Fergus	Moore Public Library	4,797	0	300
Petroleum	Petroleum County School-Community Library	26,106	2,913	367
Madison	Sheridan Public Library	21,199	3,372	587
	Twin Bridges Public Library	10,061	5,346	804
Wibaux	Wibaux Public Library	24,624	3,919	500
		142,006	20,301	3,511
Statewide Totals		9,515,161	2,616,385	153,021

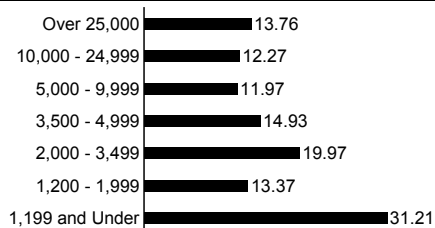
Employee Expenditures Per Capita by Service Population



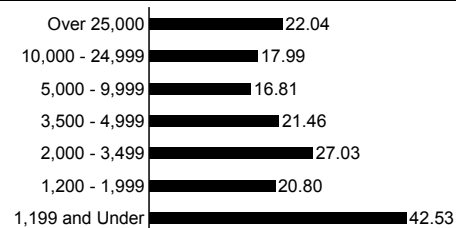
Library Expenditures by Service Population - SFY 2007

<i>print collection</i>	<i>electronic materials</i>	<i>other materials</i>	<i>other operating</i>	<i>total expenses</i>	<i>capital outlay</i>	<i>service area population</i>	<i>per capita</i>
2,000 - 3,499							
5,147	260	1,553	3,519	26,188	1,642	2,259	11.59
10,655	0	1,185	15,685	61,591	3,006	3,444	17.88
9,758	0	0	4,511	64,703	0	2,017	32.08
12,811	2,494	2,260	20,015	138,408	15,071	2,837	48.79
11,946	1,805	0	10,196	61,161	0	2,710	22.57
6,165	524	978	10,617	55,823	2,832	2,269	24.60
1,100	221	0	8,907	18,693	0	2,210	8.46
5,900	850	0	4,700	54,913	0	2,329	23.58
8,017	5,319	3,239	4,960	69,088	6,102	2,158	32.01
12,290	0	1,412	300	112,367	2,120	3,214	34.96
7,000	1,000	2,918	0	105,918	0	2,995	35.36
90,789	12,473	13,545	83,410	768,853	30,773	28,442	27.03
1,200 - 1,999							
4,813	3,705	0	2,561	20,180	2,762	1,522	13.26
5,271	2,547	729	179	22,732	4,918	1,401	16.23
3,060	430	0	5,538	18,706	0	1,360	13.75
350	5,000	336	7,825	31,215	0	1,599	19.52
2,647	510	1,202	494	26,625	0	1,279	20.82
691	0	3,876	9,559	39,522	0	1,977	19.99
6,405	524	0	10,217	53,210	0	1,858	28.64
578	4,431	6,940	14,533	57,018	0	1,932	29.51
3,000	0	0	3,700	16,200	6,000	1,713	9.46
5,387	0	696	8,217	35,291	1,445	1,199	29.43
4,100	615	0	3,060	28,327	373	1,691	16.75
8,127	0	0	15,236	53,550	11,847	1,926	27.80
3,312	2,460	0	16,679	37,730	0	1,708	22.09
47,741	20,222	13,779	97,798	440,306	27,345	21,165	20.80
1,199 and Under							
2,162	0	0	1,670	7,891	0	301	26.22
737	3,094	0	778	11,113	0	156	71.24
7,773	1,544	2,949	9,545	35,914	0	1,117	32.15
6,660	0	2,940	3,402	49,259	0	1,129	43.63
1,900	0	0	0	6,997	0	186	37.62
9,500	780	5,000	700	45,366	1,767	493	92.02
3,746	227	2,104	4,143	35,378	2,728	948	37.32
3,924	1,171	225	1,929	23,460	0	689	34.05
5,478	1,114	400	7,452	43,487	0	1,068	40.72
41,880	7,930	13,618	29,619	258,865	4,495	6,087	42.53
1,855,783	352,415	468,823	3,810,851	18,772,439	7,325,413	900,302	20.85

Collection Expenditures Per Capita by Service Population



Total Expenditures Per Capita by Service Population



Collection - SFY 2007

county	library	print	print serials	audios	videos	e-books	serials	dbases	other	total	service pop	per capita
Beaverhead	Dillon Public Library	18,961	27	587	939	9,058	0	1	0	29,573	9,202	3.21
Big Horn	Big Horn County Public Library	32,000	43	140	2,000	9,058	1	1	750	43,993	12,671	3.47
Blaine	Blaine County Library	20,937	56	706	853	0	0	3	0	22,555	4,299	5.25
Blaine	Harlem Public Library	13,655	65	330	395	0	0	1	0	14,446	2,710	5.33
Broadwater	Broadwater School and Community Library	43,072	54	466	810	0	0	1	252	44,655	4,385	10.18
Carbon	Bridger Public Library	15,886	8	656	195	0	0	0	0	16,745	2,259	7.41
Carbon	Joliet Public Library	11,424	2	111	296	0	0	0	0	11,833	2,210	5.35
Carbon	Red Lodge Carnegie Library	14,646	24	552	525	0	0	0	0	15,747	5,083	3.10
Carter	Ekalaka Public Library	6,624	0	250	621	0	1	2	0	7,498	1,360	5.51
Cascade	Belt Public Library	6,564	10	357	85	0	0	0	0	7,016	1,522	4.61
Cascade	Great Falls Public Library	149,103	244	2,675	3,867	99	0	2	80	156,070	77,128	2.02
Cascade	Wedsworth Memorial Library	6,031	8	395	682	0	0	0	0	7,116	1,708	4.17
Chouteau	Chouteau County Library	43,750	115	575	625	0	0	24	630	45,719	5,970	7.66
Custer	Miles City Public Library	37,329	111	1,200	1,650	9,058	0	0	0	49,348	11,696	4.22
Daniels	Daniels County Library	24,600	53	950	1,135	0	1	1	130	26,870	2,017	13.32
Dawson	Glendive Public Library	21,039	60	1,190	1,265	9,073	0	0	44	32,671	9,059	3.61
Deer Lodge	Hearst Free Library	31,000	86	1,428	1,424	9,058	0	0	0	42,996	9,417	4.57
Fallon	Fallon County Library	18,103	27	553	587	0	0	2	119	19,391	2,837	6.84
Fergus	Denton Public Library	5,650	0	200	100	0	0	0	60	6,010	301	19.97
Fergus	Dorothy Asbjornson Community Library	5,797	3	0	0	0	1	0	0	5,801	156	37.19
Fergus	Lewistown Public Library	34,111	30	1,725	1,209	9,058	0	2	809	46,944	11,250	4.17
Fergus	Moore Public Library	8,490	0	150	310	0	0	0	0	8,950	186	48.12
Flathead	Flathead County Library	169,962	230	5,765	6,416	9,058	0	0	0	191,431	74,471	2.57
Gallatin	Belgrade Community Library	19,000	58	847	1,296	9,058	0	1	0	30,260	10,272	2.95
Gallatin	Bozeman Public Library	114,824	230	6,549	4,284	9,058	0	0	18	134,963	47,805	2.82
Gallatin	Manhattan Community Library	22,133	34	684	457	0	0	0	483	23,791	3,214	7.40
Gallatin	Three Forks Community Library	13,547	32	198	446	9,058	0	0	0	23,281	3,546	6.57
Gallatin	West Yellowstone Public Library	16,791	25	372	493	9,058	2	24	136	26,901	2,995	8.98
Garfield	Garfield County Library	13,056	3	412	155	0	0	1	0	13,627	1,279	10.65
Glacier	Glacier County Library	37,969	60	805	680	0	0	0	34	39,548	13,247	2.99
Granite	Drummond School Community Library	12,866	21	95	136	9,058	0	1	8	22,185	1,117	19.86
Granite	Phillipsburg Public Library	6,100	2	190	375	0	2	0	200	6,869	1,713	4.01
Hill	Havre-Hill County Library	75,448	75	1,408	2,174	5	0	27	250	79,387	16,673	4.76
Jefferson	Boulder Community Library	64,066	110	1,912	4,383	9,058	0	1	0	79,530	10,049	7.91
Judith Basin	Judith Basin County Free Library	18,964	30	496	207	0	0	5	950	20,652	2,329	8.87
Lake	Poison City Library	40,000	79	618	720	9,058	0	2	47	50,524	11,789	4.29
Lake	Ronan City Library	19,308	42	1,188	589	0	0	0	0	21,127	8,765	2.41
Lake	St Ignatius School-Community Library	15,253	24	573	993	0	1	3	249	17,096	5,953	2.87
Lewis and Clark	Lewis and Clark Library	125,113	250	6,529	6,685	0	0	42	335	138,954	55,716	2.49
Liberty	Liberty County Library	27,436	21	897	781	0	0	1	278	29,414	2,158	13.63
Lincoln	Lincoln County Public Libraries	38,032	112	1,671	3,487	0	0	0	379	43,681	18,837	2.32
Madison	Madison Valley Public Library	12,818	45	567	1,181	9,061	0	24	24	23,720	1,129	21.01
Madison	Sheridan Public Library	8,826	9	360	314	9,057	0	0	0	18,566	948	19.58

Collection - SFY 2007

county	library	print	print serials	audios	videos	e-books	serials	dbases	other	total	service pop	per capita
Madison	Thompson-Hickman County Library	4,977	22	223	1,167	9,058	0	0	3	15,450	4,084	3.78
Madison	Twin Bridges Public Library	7,536	12	184	1,196	8,660	1	2	1	17,592	689	25.53
McCone	George McCone Memorial County Library	19,000	37	150	653	0	0	2	147	19,989	1,977	10.11
Meagher	Meagher County/City Library	14,269	1	889	251	9,058	0	1	272	24,741	1,932	12.81
Mineral	Mineral County Public Library	35,000	35	620	1,450	0	0	1	50	37,156	3,884	9.57
Missoula	Missoula Public Library	230,571	533	16,966	11,906	9,198	1	8	1,694	270,877	95,802	2.83
Musselshell	Roundup School-Community Library	24,657	41	1,260	624	0	0	0	167	26,749	4,497	5.95
Park	Livingston-Park County Public Library	56,155	249	2,023	1,574	0	12	3	372	60,388	15,694	3.85
Petroleum	Petroleum County School-Community Library	20,828	45	586	1,431	1	1	1	1,743	24,636	493	49.97
Phillips	Phillips County Library	24,065	34	410	390	0	0	28	0	24,927	4,601	5.42
Pondera	Conrad Public Library	17,206	9	545	1,581	0	10	2	51	19,404	4,498	4.31
Pondera	Valier Public Library	13,493	15	352	559	0	0	1	0	14,420	1,926	7.49
Powder River	Henry A Malley Memorial Library	25,000	22	400	100	0	0	0	0	25,522	1,858	13.74
Powell	William K. Kohrs Memorial Library	25,116	45	1,534	1,783	0	0	0	30	28,508	7,180	3.97
Prairie	Prairie County Library	13,145	10	349	592	0	0	0	145	14,241	1,199	11.88
Ravalli	Bitterroot Public Library	36,145	70	1,358	835	9,058	2	0	0	47,468	23,844	1.99
Ravalli	Darby Community Public Library	6,276	45	95	200	0	0	0	0	6,616	3,907	1.69
Ravalli	North Valley Public Library	35,000	25	600	1,000	0	0	0	50	36,675	8,319	4.41
Richland	Sidney-Richland County Library	27,361	68	1,548	806	3,830	0	3	1,075	34,691	9,667	3.59
Roosevelt	Roosevelt County Library	48,520	71	954	322	0	0	0	56	49,923	10,620	4.70
Rosebud	Rosebud County Library	46,521	122	2,264	2,679	9,058	3	0	575	61,222	9,383	6.52
Sanders	Plains Public Library District	15,532	44	327	264	9,058	1	3	116	25,345	3,808	6.66
Sanders	Preston Town County Library	15,102	27	146	644	0	0	1	0	15,920	1,691	9.41
Sanders	Thompson Falls Public Library	17,221	51	824	720	9,058	0	0	64	27,938	4,728	5.91
Sheridan	Sheridan County Library	34,840	63	1,837	979	0	1	1	29	37,750	4,105	9.20
Silver Bow	Butte-Silver Bow Public Library	76,205	226	1,106	2,093	0	0	0	1,328	80,958	34,606	2.34
Stillwater	Stillwater County Library	25,894	37	2,493	555	0	0	2	0	28,981	8,195	3.54
Sweet Grass	Carnegie Public Library	15,113	63	791	460	9,058	3	23	0	25,511	3,609	7.07
Teton	Choteau/Teton Public Library	18,492	17	1,367	2,176	0	0	0	62	22,114	3,444	6.42
Teton	Dutton Public Library	7,660	4	494	822	0	4	1	0	8,985	1,401	6.41
Teton	Fairfield Public Library	10,503	10	410	775	0	0	2	186	11,886	1,599	7.43
Toole	Toole County Library	23,597	25	871	1,133	0	0	0	516	26,142	5,267	4.96
Valley	Glasgow City-County Library	42,224	57	1,717	1,002	0	0	0	0	45,000	7,675	5.86
Wheatland	Harlowton Public Library	12,848	35	574	436	0	0	2	0	13,895	2,269	6.12
Wibaux	Wibaux Public Library	14,892	8	46	584	0	0	2	93	15,625	1,068	14.63
Yellowstone	Laurel Public Library	19,070	23	524	891	9,058	0	1	0	29,567	6,255	4.73
Yellowstone	Parmly Billings Library	260,260	329	23,782	23,958	10	0	6	1,858	310,203	123,097	2.52

Statewide Totals 2,780,578 5,048 117,951 124,416 239,212 48 268 16,948 3,284,469 900,302 3.65

Collection by Service Population - SFY 2007

<i>county</i>	<i>library name</i>	<i>print</i>	<i>print serials</i>	<i>audios</i>	<i>videos</i>
Over 25,000					
Gallatin	Bozeman Public Library	114,824	230	6,549	4,284
Silver Bow	Butte-Silver Bow Public Library	76,205	226	1,106	2,093
Flathead	Flathead County Library	169,962	230	5,765	6,416
Cascade	Great Falls Public Library	149,103	244	2,675	3,867
Lewis and Clark	Lewis and Clark Library	125,113	250	6,529	6,685
Missoula	Missoula Public Library	230,571	533	16,966	11,906
Yellowstone	Parmly Billings Library	260,260	329	23,782	23,958
		1,126,038	2,042	63,372	59,209
10,000 - 24,999					
Gallatin	Belgrade Community Library	19,000	58	847	1,296
Big Horn	Big Horn County Public Library	32,000	43	140	2,000
Ravalli	Bitterroot Public Library	36,145	70	1,358	835
Jefferson	Boulder Community Library	64,066	110	1,912	4,383
Glacier	Glacier County Library	37,969	60	805	680
Hill	Havre-Hill County Library	75,448	75	1,408	2,174
Fergus	Lewistown Public Library	34,111	30	1,725	1,209
Lincoln	Lincoln County Public Libraries	38,032	112	1,671	3,487
Park	Livingston-Park County Public Library	56,155	249	2,023	1,574
Custer	Miles City Public Library	37,329	111	1,200	1,650
Lake	Polson City Library	40,000	79	618	720
Roosevelt	Roosevelt County Library	48,520	71	954	322
		518,775	1,068	14,661	20,330
5,000 - 9,999					
Chouteau	Chouteau County Library	43,750	115	575	625
Beaverhead	Dillon Public Library	18,961	27	587	939
Valley	Glasgow City-County Library	42,224	57	1,717	1,002
Dawson	Glendive Public Library	21,039	60	1,190	1,265
Deer Lodge	Hearst Free Library	31,000	86	1,428	1,424
Yellowstone	Laurel Public Library	19,070	23	524	891
Ravalli	North Valley Public Library	35,000	25	600	1,000
Carbon	Red Lodge Carnegie Library	14,646	24	552	525
Lake	Ronan City Library	19,308	42	1,188	589
Rosebud	Rosebud County Library	46,521	122	2,264	2,679
Richland	Sidney-Richland County Library	27,361	68	1,548	806
Lake	St Ignatius School-Community Library	15,253	24	573	993
Stillwater	Stillwater County Library	25,894	37	2,493	555
Toole	Toole County Library	23,597	25	871	1,133
Powell	William K. Kohrs Memorial Library	25,116	45	1,534	1,783
		408,740	780	17,644	16,209
3,500 - 4,999					
Blaine	Blaine County Library	20,937	56	706	853
Broadwater	Broadwater School and Community Library	43,072	54	466	810
Sweet Grass	Carnegie Public Library	15,113	63	791	460
Pondera	Conrad Public Library	17,206	9	545	1,581
Ravalli	Darby Community Public Library	6,276	45	95	200
Mineral	Mineral County Public Library	35,000	35	620	1,450
Phillips	Phillips County Library	24,065	34	410	390
Sanders	Plains Public Library District	15,532	44	327	264
Musselshell	Roundup School-Community Library	24,657	41	1,260	624
Sheridan	Sheridan County Library	34,840	63	1,837	979
Sanders	Thompson Falls Public Library	17,221	51	824	720
Madison	Thompson-Hickman County Library	4,977	22	223	1,167
Gallatin	Three Forks Community Library	13,547	32	198	446
		272,443	549	8,302	9,944

Collection by Service Population - SFY 2007

<i>other</i>	<i>e-books</i>	<i>electronic serials</i>	<i>databases</i>	<i>total</i>	<i>service population</i>	<i>per capita</i>
Over 25,000						
18	9,058	0	0	134,963	47,805	2.82
1,328	0	0	0	80,958	34,606	2.34
0	9,058	0	0	191,431	74,471	2.57
80	99	0	2	156,070	77,128	2.02
335	0	0	42	138,954	55,716	2.49
1,694	9,198	1	8	270,877	95,802	2.83
1,858	10	0	6	310,203	123,097	2.52
5,313	27,423	1	58	1,283,456	508,625	2.52
10,000 - 24,999						
0	9,058	0	1	30,260	10,272	2.95
750	9,058	1	1	43,993	12,671	3.47
0	9,058	2	0	47,468	23,844	1.99
0	9,058	0	1	79,530	10,049	7.91
34	0	0	0	39,548	13,247	2.99
250	5	0	27	79,387	16,673	4.76
809	9,058	0	2	46,944	11,250	4.17
379	0	0	0	43,681	18,837	2.32
372	0	12	3	60,388	15,694	3.85
0	9,058	0	0	49,348	11,696	4.22
47	9,058	0	2	50,524	11,789	4.29
56	0	0	0	49,923	10,620	4.70
2,697	63,411	15	37	620,994	166,642	3.73
5,000 - 9,999						
630	0	0	24	45,719	5,970	7.66
0	9,058	0	1	29,573	9,202	3.21
0	0	0	0	45,000	7,675	5.86
44	9,073	0	0	32,671	9,059	3.61
0	9,058	0	0	42,996	9,417	4.57
0	9,058	0	1	29,567	6,255	4.73
50	0	0	0	36,675	8,319	4.41
0	0	0	0	15,747	5,083	3.10
0	0	0	0	21,127	8,765	2.41
575	9,058	3	0	61,222	9,383	6.52
1,075	3,830	0	3	34,691	9,667	3.59
249	0	1	3	17,096	5,953	2.87
0	0	0	2	28,981	8,195	3.54
516	0	0	0	26,142	5,267	4.96
30	0	0	0	28,508	7,180	3.97
3,169	49,135	4	34	495,715	115,390	4.30
3,500 - 4,999						
0	0	0	3	22,555	4,299	5.25
252	0	0	1	44,655	4,385	10.18
0	9,058	3	23	25,511	3,609	7.07
51	0	10	2	19,404	4,498	4.31
0	0	0	0	6,616	3,907	1.69
50	0	0	1	37,156	3,884	9.57
0	0	0	28	24,927	4,601	5.42
116	9,058	1	3	25,345	3,808	6.66
167	0	0	0	26,749	4,497	5.95
29	0	1	1	37,750	4,105	9.20
64	9,058	0	0	27,938	4,728	5.91
3	9,058	0	0	15,450	4,084	3.78
0	9,058	0	0	23,281	3,546	6.57
732	45,290	15	62	337,337	53,951	6.25

Collection by Service Population - SFY 2007

<i>county</i>	<i>library name</i>	<i>print</i>	<i>print serials</i>	<i>audios</i>	<i>videos</i>
2,000 - 3,499					
Carbon	Bridger Public Library	15,886	8	656	195
Teton	Choteau/Teton Public Library	18,492	17	1,367	2,176
Daniels	Daniels County Library	24,600	53	950	1,135
Fallon	Fallon County Library	18,103	27	553	587
Blaine	Harlem Public Library	13,655	65	330	395
Wheatland	Harlowton Public Library	12,848	35	574	436
Carbon	Joliet Public Library	11,424	2	111	296
Judith Basin	Judith Basin County Free Library	18,964	30	496	207
Liberty	Liberty County Library	27,436	21	897	781
Gallatin	Manhattan Community Library	22,133	34	684	457
Gallatin	West Yellowstone Public Library	16,791	25	372	493
		200,332	317	6,990	7,158
1,200 - 1,999					
Cascade	Belt Public Library	6,564	10	357	85
Teton	Dutton Public Library	7,660	4	494	822
Carter	Ekalaka Public Library	6,624	0	250	621
Teton	Fairfield Public Library	10,503	10	410	775
Garfield	Garfield County Library	13,056	3	412	155
McCone	George McCone Memorial County Library	19,000	37	150	653
Powder River	Henry A Malley Memorial Library	25,000	22	400	100
Meagher	Meagher County/City Library	14,269	1	889	251
Granite	Philipsburg Public Library	6,100	2	190	375
Prairie	Prairie County Library	13,145	10	349	592
Sanders	Preston Town County Library	15,102	27	146	644
Pondera	Valier Public Library	13,493	15	352	559
Cascade	Wedsworth Memorial Library	6,031	8	395	682
		156,547	149	4,794	6,314
1,199 and Under					
Fergus	Denton Public Library	5,650	0	200	100
Fergus	Dorothy Asbjornson Community Library	5,797	3	0	0
Granite	Drummond School Community Library	12,866	21	95	136
Madison	Madison Valley Public Library	12,818	45	567	1,181
Fergus	Moore Public Library	8,490	0	150	310
Petroleum	Petroleum County School-Community Library	20,828	45	586	1,431
Madison	Sheridan Public Library	8,826	9	360	314
Madison	Twin Bridges Public Library	7,536	12	184	1,196
Wibaux	Wibaux Public Library	14,892	8	46	584
		97,703	143	2,188	5,252
Statewide Totals		2,780,578	5,048	117,951	124,416

Collection by Service Population - SFY 2007

<i>other</i>	<i>e-books</i>	<i>electronic serials</i>	<i>databases</i>	<i>total</i>	<i>service population</i>	<i>per capita</i>
2,000 - 3,499						
0	0	0	0	16,745	2,259	7.41
62	0	0	0	22,114	3,444	6.42
130	0	1	1	26,870	2,017	13.32
119	0	0	2	19,391	2,837	6.84
0	0	0	1	14,446	2,710	5.33
0	0	0	2	13,895	2,269	6.12
0	0	0	0	11,833	2,210	5.35
950	0	0	5	20,652	2,329	8.87
278	0	0	1	29,414	2,158	13.63
483	0	0	0	23,791	3,214	7.40
136	9,058	2	24	26,901	2,995	8.98
2,158	9,058	3	36	226,052	28,442	7.95
1,200 - 1,999						
0	0	0	0	7,016	1,522	4.61
0	0	4	1	8,985	1,401	6.41
0	0	1	2	7,498	1,360	5.51
186	0	0	2	11,886	1,599	7.43
0	0	0	1	13,627	1,279	10.65
147	0	0	2	19,989	1,977	10.11
0	0	0	0	25,522	1,858	13.74
272	9,058	0	1	24,741	1,932	12.81
200	0	2	0	6,869	1,713	4.01
145	0	0	0	14,241	1,199	11.88
0	0	0	1	15,920	1,691	9.41
0	0	0	1	14,420	1,926	7.49
0	0	0	0	7,116	1,708	4.17
950	9,058	7	11	177,830	21,165	8.40
1,199 and Under						
60	0	0	0	6,010	301	19.97
0	0	1	0	5,801	156	37.19
8	9,058	0	1	22,185	1,117	19.86
24	9,061	0	24	23,720	1,129	21.01
0	0	0	0	8,950	186	48.12
1,743	1	1	1	24,636	493	49.97
0	9,057	0	0	18,566	948	19.58
1	8,660	1	2	17,592	689	25.53
93	0	0	2	15,625	1,068	14.63
1,929	35,837	3	30	143,085	6,087	23.51
16,948	239,212	48	268	3,284,469	900,302	3.65%

Service Hours - SFY 2007

county	library	Weekly Hours Open to Public		Annual Hours Open	Users	
		main	branch		per week	per year
Beaverhead	Dillon Public Library	44	0	2,288	440	22,880
Big Horn	Big Horn County Public Library	44	0	2,288	1,049	54,548
Blaine	Blaine County Library	31	0	1,612	115	5,980
	Harlem Public Library	25	0	1,300	58	3,016
Broadwater	Broadwater School and Community Library	61	0	3,172	1,055	54,860
Carbon	Bridger Public Library	17	0	884	68	3,536
	Joliet Public Library	16	0	832	31	1,612
	Red Lodge Carnegie Library	38	0	1,976	299	15,548
Carter	Ekalaka Public Library	20	0	1,040	48	2,496
Cascade	Belt Public Library	22	0	1,144	115	5,980
	Great Falls Public Library	58	0	3,016	4,205	218,660
	Wedsworth Memorial Library	23	0	1,196	60	3,120
Chouteau	Chouteau County Library	47	40	4,524	820	42,640
Custer	Miles City Public Library	41	0	2,132	795	41,340
Daniels	Daniels County Library	43	0	2,236	455	23,660
Dawson	Glendive Public Library	45	12	2,964	655	34,060
Deer Lodge	Hearst Free Library	40	0	2,080	1,300	67,600
Fallon	Fallon County Library	49	0	2,548	262	13,624
Fergus	Denton Public Library	38	0	1,976	29	1,508
	Dorothy Asbjornson Community Library	15	0	780	26	1,352
	Lewistown Public Library	41	0	2,132	1,500	78,000
	Moore Public Library	15	0	780	60	3,120
Flathead	Flathead County Library	53	126	9,308	8,269	429,988
Gallatin	Belgrade Community Library	48	0	2,496	982	51,064
	Bozeman Public Library	58	0	3,016	6,673	346,996
	Manhattan Community Library	35	0	1,820	883	45,916
	Three Forks Community Library	35	0	1,820	216	11,232
	West Yellowstone Public Library	38	0	1,976	337	17,524
Garfield	Garfield County Library	16	0	832	82	4,264
Glacier	Glacier County Library	42	32	3,848	641	33,332
Granite	Drummond School Community Library	16	0	832	150	7,800
	Philipsburg Public Library	15	0	780	30	1,560
Hill	Havre-Hill County Library	50	0	2,600	1,241	64,532
Jefferson	Boulder Community Library	30	30	3,120	1,117	58,084
Judith Basin	Judith Basin County Free Library	40	0	2,080	121	6,292
Lake	Polson City Library	42	0	2,184	1,000	52,000
	Ronan City Library	38	0	1,976	525	27,300
	St Ignatius School-Community Library	47	0	2,444	344	17,888
Lewis and Clark	Lewis and Clark Library	63	72	7,020	6,165	320,580
Liberty	Liberty County Library	38	0	1,976	201	10,452
Lincoln	Lincoln County Public Libraries	48	60	5,616	1,908	99,216
Madison	Madison Valley Public Library	43	0	2,236	231	12,012
	Sheridan Public Library	38	0	1,976	204	10,608
	Thompson-Hickman County Library	39	0	2,028	301	15,652
	Twin Bridges Public Library	50	0	2,600	250	13,000
McCone	George McCone Memorial County Library	24	0	1,248	159	8,268

Service Hours - SFY 2007

county	library	Weekly Hours Open to Public		Annual Hours Open	Users	
		main	branch		per week	per year
Meagher	Meagher County/City Library	30	0	1,560	217	11,284
Mineral	Mineral County Public Library	28	16	2,288	260	13,520
Missoula	Missoula Public Library	64	32	4,992	9,100	473,200
Musselshell	Roundup School-Community Library	53	0	2,756	1,172	60,944
Park	Livingston-Park County Public Library	51	0	2,652	1,484	77,168
Petroleum	Petroleum County School-Community Library	47	0	2,444	179	9,308
Phillips	Phillips County Library	38	11	2,548	39	2,028
Pondera	Conrad Public Library	38	0	1,976	463	24,076
	Valier Public Library	35	0	1,820	108	5,616
Powder River	Henry A Malley Memorial Library	34	0	1,768	155	8,060
Powell	William K. Kohrs Memorial Library	31	0	1,612	402	20,904
Prairie	Prairie County Library	16	0	832	80	4,160
Ravalli	Bitterroot Public Library	40	0	2,080	1,260	65,520
	Darby Community Public Library	34	0	1,768	270	14,040
	North Valley Public Library	44	0	2,288	538	27,976
Richland	Sidney-Richland County Library	44	0	2,288	414	21,528
Roosevelt	Roosevelt County Library	49	54	5,356	636	33,072
Rosebud	Rosebud County Library	40	40	4,160	763	39,676
Sanders	Plains Public Library District	30	0	1,560	495	25,740
	Preston Town County Library	20	0	1,040	82	4,264
	Thompson Falls Public Library	30	0	1,560	425	22,100
Sheridan	Sheridan County Library	51	0	2,652	308	16,016
Silver Bow	Butte-Silver Bow Public Library	51	0	2,652	331	17,212
Stillwater	Stillwater County Library	44	0	2,288	476	24,752
Sweet Grass	Carnegie Public Library	45	0	2,340	425	22,100
Teton	Choteau/Teton Public Library	40	0	2,080	350	18,200
	Dutton Public Library	24	0	1,248	185	9,620
	Fairfield Public Library	19	0	988	138	7,176
Toole	Toole County Library	36	18	2,808	475	24,700
Valley	Glasgow City-County Library	52	30	4,264	1,240	64,480
Wheatland	Harlowton Public Library	52	0	2,704	295	15,340
Wibaux	Wibaux Public Library	27	0	1,404	151	7,852
Yellowstone	Laurel Public Library	45	0	2,340	386	20,072
	Parmly Billings Library	63	0	3,276	6,888	358,176
Statewide Totals		3,064	573	189,124	75,665	3,934,580

Service Hours by Service Population - SFY 2007

county	library	Hours Open to Public		Annual Hours Open	Users	
		main	branch		per week	per year
Over 25,000						
Gallatin	Bozeman Public Library	58	0	3,016	6,673	346,996
Silver Bow	Butte-Silver Bow Public Library	51	0	2,652	331	17,212
Flathead	Flathead County Library	53	126	9,308	8,269	429,988
Cascade	Great Falls Public Library	58	0	3,016	4,205	218,660
Lewis and Clark	Lewis and Clark Library	63	72	7,020	6,165	320,580
Missoula	Missoula Public Library	64	32	4,992	9,100	473,200
Yellowstone	Parmly Billings Library	63	0	3,276	6,888	358,176
		410	230	33,280	41,631	2,164,812
10,000 - 24,999						
Gallatin	Belgrade Community Library	48	0	2,496	982	51,064
Big Horn	Big Horn County Public Library	44	0	2,288	1,049	54,548
Ravalli	Bitterroot Public Library	40	0	2,080	1,260	65,520
Jefferson	Boulder Community Library	30	30	3,120	1,117	58,084
Glacier	Glacier County Library	42	32	3,848	641	33,332
Hill	Havre-Hill County Library	50	0	2,600	1,241	64,532
Fergus	Lewistown Public Library	41	0	2,132	1,500	78,000
Lincoln	Lincoln County Public Libraries	48	60	5,616	1,908	99,216
Park	Livingston-Park County Public Library	51	0	2,652	1,484	77,168
Custer	Miles City Public Library	41	0	2,132	795	41,340
Lake	Polson City Library	42	0	2,184	1,000	52,000
Roosevelt	Roosevelt County Library	49	54	5,356	636	33,072
		526	176	36,504	13,613	707,876
5,000 - 9,999						
Chouteau	Chouteau County Library	47	40	4,524	820	42,640
Beaverhead	Dillon Public Library	44	0	2,288	440	22,880
Valley	Glasgow City-County Library	52	30	4,264	1,240	64,480
Dawson	Glendive Public Library	45	12	2,964	655	34,060
Deer Lodge	Hearst Free Library	40	0	2,080	1,300	67,600
Yellowstone	Laurel Public Library	45	0	2,340	386	20,072
Ravalli	North Valley Public Library	44	0	2,288	538	27,976
Carbon	Red Lodge Carnegie Library	38	0	1,976	299	15,548
Lake	Ronan City Library	38	0	1,976	525	27,300
Rosebud	Rosebud County Library	40	40	4,160	763	39,676
Richland	Sidney-Richland County Library	44	0	2,288	414	21,528
Lake	St Ignatius School-Community Library	47	0	2,444	344	17,888
Stillwater	Stillwater County Library	44	0	2,288	476	24,752
Toole	Toole County Library	36	18	2,808	475	24,700
Powell	William K. Kohrs Memorial Library	31	0	1,612	402	20,904
		635	140	40,300	9,077	472,004
3,500 - 4,999						
Blaine	Blaine County Library	31	0	1,612	115	5,980
Broadwater	Broadwater School and Community Library	61	0	3,172	1,055	54,860
Sweet Grass	Carnegie Public Library	45	0	2,340	425	22,100
Pondera	Conrad Public Library	38	0	1,976	463	24,076
Ravalli	Darby Community Public Library	34	0	1,768	270	14,040
Mineral	Mineral County Public Library	28	16	2,288	260	13,520
Phillips	Phillips County Library	38	11	2,548	39	2,028
Sanders	Plains Public Library District	30	0	1,560	495	25,740
Musselshell	Roundup School-Community Library	53	0	2,756	1,172	60,944
Sheridan	Sheridan County Library	51	0	2,652	308	16,016
Sanders	Thompson Falls Public Library	30	0	1,560	425	22,100
Madison	Thompson-Hickman County Library	39	0	2,028	301	15,652
Gallatin	Three Forks Community Library	35	0	1,820	216	11,232
		513	27	28,080	5,544	288,288

Service Hours by Service Population - SFY 2007

county	library	Hours Open to Public		Annual Hours Open	Users	
		main	branch		per week	per year
2,000 - 3,499						
Carbon	Bridger Public Library	17	0	884	68	3,536
Teton	Choteau/Teton Public Library	40	0	2,080	350	18,200
Daniels	Daniels County Library	43	0	2,236	455	23,660
Fallon	Fallon County Library	49	0	2,548	262	13,624
Blaine	Harlem Public Library	25	0	1,300	58	3,016
Wheatland	Harlowton Public Library	52	0	2,704	295	15,340
Carbon	Joliet Public Library	16	0	832	31	1,612
Judith Basin	Judith Basin County Free Library	40	0	2,080	121	6,292
Liberty	Liberty County Library	38	0	1,976	201	10,452
Gallatin	Manhattan Community Library	35	0	1,820	883	45,916
	West Yellowstone Public Library	38	0	1,976	337	17,524
		393	0	20,436	3,061	159,172
1,200 - 1,999						
Cascade	Belt Public Library	22	0	1,144	115	5,980
Teton	Dutton Public Library	24	0	1,248	185	9,620
Carter	Ekalaka Public Library	20	0	1,040	48	2,496
Teton	Fairfield Public Library	19	0	988	138	7,176
Garfield	Garfield County Library	16	0	832	82	4,264
McCone	George McCone Memorial County Library	24	0	1,248	159	8,268
Powder River	Henry A Malley Memorial Library	34	0	1,768	155	8,060
Meagher	Meagher County/City Library	30	0	1,560	217	11,284
Granite	Philipsburg Public Library	15	0	780	30	1,560
Prairie	Prairie County Library	16	0	832	80	4,160
Sanders	Preston Town County Library	20	0	1,040	82	4,264
Pondera	Valier Public Library	35	0	1,820	108	5,616
Cascade	Wedsworth Memorial Library	23	0	1,196	60	3,120
		298	0	15,496	1,459	75,868
1,199 and Under						
Fergus	Denton Public Library	38	0	1,976	29	1,508
	Dorothy Asbjornson Community Library	15	0	780	26	1,352
Granite	Drummond School Community Library	16	0	832	150	7,800
Madison	Madison Valley Public Library	43	0	2,236	231	12,012
Fergus	Moore Public Library	15	0	780	60	3,120
Petroleum	Petroleum County School-Community Library	47	0	2,444	179	9,308
Madison	Sheridan Public Library	38	0	1,976	204	10,608
	Twin Bridges Public Library	50	0	2,600	250	13,000
Wibaux	Wibaux Public Library	27	0	1,404	151	7,852
		289	0	15,028	1,280	66,560
Statewide Totals		3,064	573	189,124	75,665	3,934,580

Top 5: Users Per Capita

Moore Public Library	5.31
Petroleum County School-Community Library	4.11
Fallon County Library	3.50
Madison Valley Public Library	3.36
Toole County Library	2.47

Circulation - SFY 2007

county	library	Reference Transactions		Annual Circulation			service area population	per capita circ
		weekly	yearly	juvenile	non-juvenile	total		
Beaverhead	Dillon Public Library	60	3,120	8,692	23,189	31,881	9,202	3.46
Big Horn	Big Horn County Public Library	25	1,300	3,172	28,978	32,150	12,671	2.54
Blaine	Blaine County Library	7	364	7,257	14,094	21,351	4,299	4.97
	Harlem Public Library	9	468	6,208	8,542	14,750	2,710	5.44
Broadwater	Broadwater School and Community Library	58	3,016	17,492	9,299	26,791	4,385	6.11
Carbon	Bridger Public Library	16	832	1,608	5,547	7,155	2,259	3.17
	Joliet Public Library	3	156	1,152	1,177	2,329	2,210	1.05
	Red Lodge Carnegie Library	20	1,040	13,857	29,365	43,222	5,083	8.50
Carter	Ekalaka Public Library	10	520	1,302	1,726	3,028	1,360	2.23
Cascade	Belt Public Library	20	1,040	1,214	4,310	5,524	1,522	3.63
	Great Falls Public Library	241	12,532	136,471	211,203	347,674	77,128	4.51
	Wedsworth Memorial Library	25	1,300	0	11,927	11,927	1,708	6.98
Chouteau	Chouteau County Library	80	4,160	47,115	63,200	110,315	5,970	18.48
Custer	Miles City Public Library	37	1,924	16,787	23,758	40,545	11,696	3.47
Daniels	Daniels County Library	80	4,160	5,300	17,970	23,270	2,017	11.54
Dawson	Glendive Public Library	40	2,080	11,638	20,673	32,311	9,059	3.57
Deer Lodge	Hearst Free Library	259	13,468	6,656	27,865	34,521	9,417	3.67
Fallon	Fallon County Library	191	9,932	7,333	13,247	20,580	2,837	7.25
Fergus	Denton Public Library	1	52	500	800	1,300	301	4.32
	Dorothy Asbjornson Community Library	1	52	376	273	649	156	4.16
	Lewistown Public Library	150	7,800	26,886	50,384	77,270	11,250	6.87
	Moore Public Library	19	988	600	1,500	2,100	186	11.29
Flathead	Flathead County Library	752	39,104	162,391	306,966	469,357	74,471	6.30
Gallatin	Belgrade Community Library	57	2,964	18,281	27,227	45,508	10,272	4.43
	Bozeman Public Library	1,101	57,252	224,116	323,078	547,194	47,805	11.45
	Manhattan Community Library	123	6,396	5,986	17,299	23,285	3,214	7.24
	Three Forks Community Library	44	2,288	5,087	12,250	17,337	3,546	4.89
	West Yellowstone Public Library	15	780	1,924	6,684	8,608	2,995	2.87
Garfield	Garfield County Library	8	416	881	2,355	3,236	1,279	2.53
Glacier	Glacier County Library	61	3,172	18,049	21,016	39,065	13,247	2.95
Granite	Drummond School Community Library	40	2,080	3,550	3,246	6,796	1,117	6.08
	Philipsburg Public Library	2	104	400	250	650	1,713	0.38
Hill	Havre-Hill County Library	43	2,236	18,186	82,268	100,454	16,673	6.02
Jefferson	Boulder Community Library	195	10,140	14,645	37,210	51,855	10,049	5.16
Judith Basin	Judith Basin County Free Library	10	520	2,346	6,098	8,444	2,329	3.63
Lake	Polson City Library	131	6,812	15,634	40,011	55,645	11,789	4.72
	Ronan City Library	26	1,352	8,276	23,880	32,156	8,765	3.67
	St Ignatius School-Community Library	60	3,120	16,750	11,829	28,579	5,953	4.80
Lewis and Clark	Lewis and Clark Library	165	8,580	149,520	290,256	439,776	55,716	7.89
Liberty	Liberty County Library	43	2,236	5,439	16,401	21,840	2,158	10.12
Lincoln	Lincoln County Public Libraries	53	2,756	25,992	81,332	107,324	18,837	5.70
Madison	Madison Valley Public Library	73	3,796	15,463	23,159	38,622	1,129	34.21
	Sheridan Public Library	16	832	1,526	4,878	6,404	948	6.76
	Thompson-Hickman County Library	188	9,776	1,172	14,811	15,983	4,084	3.91
	Twin Bridges Public Library	21	1,092	954	3,884	4,838	689	7.02
McCone	George McCone Memorial County Library	15	780	3,602	5,002	8,604	1,977	4.35

Circulation - SFY 2007

county	library	Reference Transactions		Annual Circulation			service area population	per capita circ
		weekly	yearly	juvenile	non-juvenile	total		
Meagher	Meagher County/City Library	15	780	2,082	8,576	10,658	1,932	5.52
Mineral	Mineral County Public Library	50	2,600	3,293	18,605	21,898	3,884	5.64
Missoula	Missoula Public Library	610	31,720	255,330	434,752	690,082	95,802	7.20
Musselshell	Roundup School-Community Library	96	4,992	2,960	14,806	17,766	4,497	3.95
Park	Livingston-Park County Public Library	223	11,596	20,797	59,207	80,004	15,694	5.10
Petroleum	Petroleum County School-Community Library	39	2,028	4,504	1,734	6,238	493	12.65
Phillips	Phillips County Library	12	624	4,559	13,447	18,006	4,601	3.91
Pondera	Conrad Public Library	62	3,224	10,752	17,246	27,998	4,498	6.22
	Valier Public Library	34	1,768	4,182	10,079	14,261	1,926	7.40
Powder River	Henry A Malley Memorial Library	14	728	4,108	8,052	12,160	1,858	6.54
Powell	William K. Kohrs Memorial Library	10	520	0	28,949	28,949	7,180	4.03
Prairie	Prairie County Library	13	676	2,207	6,644	8,851	1,199	7.38
Ravalli	Bitterroot Public Library	182	9,464	35,442	73,878	109,320	23,844	4.58
	Darby Community Public Library	12	624	1,943	3,668	5,611	3,907	1.44
	North Valley Public Library	27	1,404	5,590	28,444	34,034	8,319	4.09
Richland	Sidney-Richland County Library	78	4,056	25,790	42,900	68,690	9,667	7.11
Roosevelt	Roosevelt County Library	71	3,692	12,554	30,033	42,587	10,620	4.01
Rosebud	Rosebud County Library	60	3,120	25,776	44,894	70,670	9,383	7.53
Sanders	Plains Public Library District	134	6,968	4,573	25,752	30,325	3,808	7.96
	Preston Town County Library	21	1,092	878	3,943	4,821	1,691	2.85
	Thompson Falls Public Library	79	4,108	6,758	21,150	27,908	4,728	5.90
Sheridan	Sheridan County Library	45	2,340	3,810	25,197	29,007	4,105	7.07
Silver Bow	Butte-Silver Bow Public Library	144	7,488	20,985	72,666	93,651	34,606	2.71
Stillwater	Stillwater County Library	161	8,372	10,200	25,137	35,337	8,195	4.31
Sweet Grass	Carnegie Public Library	142	7,384	2,615	12,498	15,113	3,609	4.19
Teton	Choteau/Teton Public Library	115	5,980	9,356	27,670	37,026	3,444	10.75
	Dutton Public Library	7	364	1,221	3,180	4,401	1,401	3.14
	Fairfield Public Library	12	624	4,902	4,705	9,607	1,599	6.01
Toole	Toole County Library	250	13,000	10,864	28,776	39,640	5,267	7.53
Valley	Glasgow City-County Library	28	1,456	8,881	27,624	36,505	7,675	4.76
Wheatland	Harlowton Public Library	31	1,612	2,570	9,831	12,401	2,269	5.47
Wibaux	Wibaux Public Library	50	2,600	3,081	3,383	6,464	1,068	6.05
Yellowstone	Laurel Public Library	16	832	20,446	16,728	37,174	6,255	5.94
	Parmly Billings Library	278	14,456	322,794	624,090	946,884	123,097	7.69

Statewide Totals

7,715 401,180 1,897,589 3,708,661 5,606,250 900,302 6.23

Top 5: Total Circulation

Parmly Billings Library	946,884
Missoula Public Library	690,082
Bozeman Public Library	547,194
Flathead County Library	469,357
Lewis and Clark Library	439,776

Top 5: Circulation Per Capita

Madison Valley Public Library	34.21
Chouteau County Library	18.48
Petroleum County School-Community Library	12.65
Daniels County Library	11.54
Bozeman Public Library	11.45

Circulation by Service Population - SFY 2007

county	library	Reference Transactions		Annual Circulation			service area population	per capita circ
		weekly	yearly	juvenile	non-juvenile	total		
Over 25,000								
Gallatin	Bozeman Public Library	1,101	57,252	224,116	323,078	547,194	47,805	11.45
Silver Bow	Butte-Silver Bow Public Library	144	7,488	20,985	72,666	93,651	34,606	2.71
Flathead	Flathead County Library	752	39,104	162,391	306,966	469,357	74,471	6.30
Cascade	Great Falls Public Library	241	12,532	136,471	211,203	347,674	77,128	4.51
Lewis and Clark	Lewis and Clark Library	165	8,580	149,520	290,256	439,776	55,716	7.89
Missoula	Missoula Public Library	610	31,720	255,330	434,752	690,082	95,802	7.20
Yellowstone	Parmly Billings Library	278	14,456	322,794	624,090	946,884	123,097	7.69
		3,291	171,132	1,271,607	2,263,011	3,534,618	508,625	6.95
10,000 - 24,999								
Gallatin	Belgrade Community Library	57	2,964	18,281	27,227	45,508	10,272	4.43
Big Horn	Big Horn County Public Library	25	1,300	3,172	28,978	32,150	12,671	2.54
Ravalli	Bitterroot Public Library	182	9,464	35,442	73,878	109,320	23,844	4.58
Jefferson	Boulder Community Library	195	10,140	14,645	37,210	51,855	10,049	5.16
Glacier	Glacier County Library	61	3,172	18,049	21,016	39,065	13,247	2.95
Hill	Havre-Hill County Library	43	2,236	18,186	82,268	100,454	16,673	6.02
Fergus	Lewistown Public Library	150	7,800	26,886	50,384	77,270	11,250	6.87
Lincoln	Lincoln County Public Libraries	53	2,756	25,992	81,332	107,324	18,837	5.70
Park	Livingston-Park County Public Library	223	11,596	20,797	59,207	80,004	15,694	5.10
Custer	Miles City Public Library	37	1,924	16,787	23,758	40,545	11,696	3.47
Lake	Polson City Library	131	6,812	15,634	40,011	55,645	11,789	4.72
Roosevelt	Roosevelt County Library	71	3,692	12,554	30,033	42,587	10,620	4.01
		1,228	63,856	226,425	555,302	781,727	166,642	4.69
5,000 - 9,999								
Chouteau	Chouteau County Library	80	4,160	47,115	63,200	110,315	5,970	18.48
Beaverhead	Dillon Public Library	60	3,120	8,692	23,189	31,881	9,202	3.46
Valley	Glasgow City-County Library	28	1,456	8,881	27,624	36,505	7,675	4.76
Dawson	Glendive Public Library	40	2,080	11,638	20,673	32,311	9,059	3.57
Deer Lodge	Hearst Free Library	259	13,468	6,656	27,865	34,521	9,417	3.67
Yellowstone	Laurel Public Library	16	832	20,446	16,728	37,174	6,255	5.94
Ravalli	North Valley Public Library	27	1,404	5,590	28,444	34,034	8,319	4.09
Carbon	Red Lodge Carnegie Library	20	1,040	13,857	29,365	43,222	5,083	8.50
Lake	Ronan City Library	26	1,352	8,276	23,880	32,156	8,765	3.67
Rosebud	Rosebud County Library	60	3,120	25,776	44,894	70,670	9,383	7.53
Richland	Sidney-Richland County Library	78	4,056	25,790	42,900	68,690	9,667	7.11
Lake	St Ignatius School-Community Library	60	3,120	16,750	11,829	28,579	5,953	4.80
Stillwater	Stillwater County Library	161	8,372	10,200	25,137	35,337	8,195	4.31
Toole	Toole County Library	250	13,000	10,864	28,776	39,640	5,267	7.53
Powell	William K. Kohrs Memorial Library	10	520	0	28,949	28,949	7,180	4.03
		1,175	61,100	220,531	443,453	663,984	115,390	5.75
3,500 - 4,999								
Blaine	Blaine County Library	7	364	7,257	14,094	21,351	4,299	4.97
Broadwater	Broadwater School and Community Library	58	3,016	17,492	9,299	26,791	4,385	6.11
Sweet Grass	Carnegie Public Library	142	7,384	2,615	12,498	15,113	3,609	4.19
Pondera	Conrad Public Library	62	3,224	10,752	17,246	27,998	4,498	6.22
Ravalli	Darby Community Public Library	12	624	1,943	3,668	5,611	3,907	1.44
Mineral	Mineral County Public Library	50	2,600	3,293	18,605	21,898	3,884	5.64
Phillips	Phillips County Library	12	624	4,559	13,447	18,006	4,601	3.91
Sanders	Plains Public Library District	134	6,968	4,573	25,752	30,325	3,808	7.96
Musselshell	Roundup School-Community Library	96	4,992	2,960	14,806	17,766	4,497	3.95
Sheridan	Sheridan County Library	45	2,340	3,810	25,197	29,007	4,105	7.07
Sanders	Thompson Falls Public Library	79	4,108	6,758	21,150	27,908	4,728	5.90
Madison	Thompson-Hickman County Library	188	9,776	1,172	14,811	15,983	4,084	3.91
Gallatin	Three Forks Community Library	44	2,288	5,087	12,250	17,337	3,546	4.89
		929	48,308	72,271	202,823	275,094	53,951	5.10

Circulation by Service Population - SFY 2007

county	library	Reference Transactions		Annual Circulation			service area population	per capita circ
		weekly	yearly	juvenile	non-juvenile	total		
2,000 - 3,499								
Carbon	Bridger Public Library	16	832	1,608	5,547	7,155	2,259	3.17
Teton	Choteau/Teton Public Library	115	5,980	9,356	27,670	37,026	3,444	10.75
Daniels	Daniels County Library	80	4,160	5,300	17,970	23,270	2,017	11.54
Fallon	Fallon County Library	191	9,932	7,333	13,247	20,580	2,837	7.25
Blaine	Harlem Public Library	9	468	6,208	8,542	14,750	2,710	5.44
Wheatland	Harlowton Public Library	31	1,612	2,570	9,831	12,401	2,269	5.47
Judith Basin	Judith Basin County Free Library	10	520	2,346	6,098	8,444	2,329	3.63
Liberty	Liberty County Library	43	2,236	5,439	16,401	21,840	2,158	10.12
Gallatin	Manhattan Community Library	123	6,396	5,986	17,299	23,285	3,214	7.24
Gallatin	West Yellowstone Public Library	15	780	1,924	6,684	8,608	2,995	2.87
		633	32,916	48,070	129,289	177,359	26,232	6.76

1,200 - 1,999

Cascade	Belt Public Library	20	1,040	1,214	4,310	5,524	1,522	3.63
Teton	Dutton Public Library	7	364	1,221	3,180	4,401	1,401	3.14
Carter	Ekalaka Public Library	10	520	1,302	1,726	3,028	1,360	2.23
Teton	Fairfield Public Library	12	624	4,902	4,705	9,607	1,599	6.01
Garfield	Garfield County Library	8	416	881	2,355	3,236	1,279	2.53
McCone	George McCone Memorial County Library	15	780	3,602	5,002	8,604	1,977	4.35
Powder River	Henry A Malley Memorial Library	14	728	4,108	8,052	12,160	1,858	6.54
Meagher	Meagher County/City Library	15	780	2,082	8,576	10,658	1,932	5.52
Granite	Philipsburg Public Library	2	104	400	250	650	1,713	0.38
Prairie	Prairie County Library	13	676	2,207	6,644	8,851	1,199	7.38
Sanders	Preston Town County Library	21	1,092	878	3,943	4,821	1,691	2.85
Pondera	Valier Public Library	34	1,768	4,182	10,079	14,261	1,926	7.40
Cascade	Wedsworth Memorial Library	25	1,300	0	11,927	11,927	1,708	6.98
		196	10,192	26,979	70,749	97,728	21,165	4.62

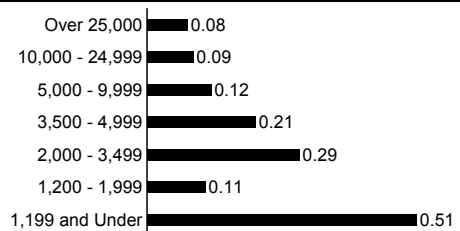
1,199 and Under

Fergus	Denton Public Library	1	52	500	800	1,300	301	4.32
Fergus	Dorothy Asbjornson Community Library	1	52	376	273	649	156	4.16
Granite	Drummond School Community Library	40	2,080	3,550	3,246	6,796	1,117	6.08
Madison	Madison Valley Public Library	73	3,796	15,463	23,159	38,622	1,129	34.21
Fergus	Moore Public Library	19	988	600	1,500	2,100	186	11.29
Petroleum	Petroleum County School-Community Library	39	2,028	4,504	1,734	6,238	493	12.65
Madison	Sheridan Public Library	16	832	1,526	4,878	6,404	948	6.76
Madison	Twin Bridges Public Library	21	1,092	954	3,884	4,838	689	7.02
Wibaux	Wibaux Public Library	50	2,600	3,081	3,383	6,464	1,068	6.05
		260	13,520	30,554	42,857	73,411	6,087	12.06

Statewide Totals

7,712 401,024 1,896,437 3,707,484 5,603,921 898,092 6.24

Reference Transactions Per Capita Per Year by Service Population



Average Circulation by Service Population

Service Population	children's	adults	total
Over 25,000	181,658	323,287	504,945
10,000 - 24,999	18,869	46,275	65,144
5,000 - 9,999	14,702	29,564	44,266
3,500 - 4,999	5,559	15,602	21,161
2,000 - 3,499	4,807	12,929	17,736
1,200 - 1,999	2,075	5,442	7,518
1,199 and Under	3,395	4,762	8,157

Programs - SFY 2007

county	library	Programs Offered				Program Attendance			
		children	young adults	adults	total	children	young adults	adults	total
Beaverhead	Dillon Public Library	79	0	12	91	1,375	0	379	1,754
Big Horn	Big Horn County Public Library	110	0	0	110	1,562	0	0	1,562
Blaine	Blaine County Library	44	0	1	45	771	0	46	817
	Harlem Public Library	42	0	1	43	349	0	40	389
Broadwater	Broadwater School and Community Library	11	4	4	19	3,051	459	1,328	4,838
Carbon	Bridger Public Library	7	0	0	7	588	0	0	588
	Joliet Public Library	40	9	2	51	467	54	240	761
	Red Lodge Carnegie Library	45	2	19	66	789	15	495	1,299
Carter	Ekalaka Public Library	40	7	5	52	267	38	90	395
Cascade	Belt Public Library	12	2	1	15	50	35	80	165
	Great Falls Public Library	219	28	93	340	9,060	221	3,689	12,970
	Wedsworth Memorial Library	36	1	7	44	296	10	88	394
Chouteau	Chouteau County Library	166	12	65	243	2,490	50	1,150	3,690
Custer	Miles City Public Library	168	9	67	244	2,550	353	1,006	3,909
Daniels	Daniels County Library	68	0	15	83	1,520	0	177	1,697
Dawson	Glendive Public Library	75	1	12	88	1,663	25	252	1,940
Deer Lodge	Hearst Free Library	20	16	10	46	1,400	375	500	2,275
Fallon	Fallon County Library	40	0	7	47	430	0	41	471
Fergus	Denton Public Library	1	1	1	3	30	10	0	40
	Dorothy Asbjornson Community Library	1	0	1	2	92	0	18	110
	Lewistown Public Library	231	34	122	387	4,848	251	756	5,855
	Moore Public Library	2	1	2	5	12	6	8	26
Flathead	Flathead County Library	431	22	72	525	10,140	1,536	4,558	16,234
Gallatin	Belgrade Community Library	42	9	15	66	2,864	34	282	3,180
	Bozeman Public Library	343	6	69	418	13,180	114	2,854	16,148
	Manhattan Community Library	4	1	1	6	484	106	108	698
	Three Forks Community Library	79	0	16	95	1,055	0	201	1,256
	West Yellowstone Public Library	16	0	62	78	167	0	524	691
Garfield	Garfield County Library	8	0	4	12	95	0	103	198
Glacier	Glacier County Library	163	0	34	197	2,927	0	560	3,487
Granite	Drummond School Community Library	17	4	22	43	200	222	350	772
	Philipsburg Public Library	1	0	0	1	5	0	0	5
Hill	Havre-Hill County Library	66	2	25	93	2,705	86	2,808	5,599
Jefferson	Boulder Community Library	63	0	16	79	1,385	0	621	2,006
Judith Basin	Judith Basin County Free Library	25	0	12	37	67	0	79	146
Lake	Polson City Library	274	14	3	291	4,397	406	1,484	6,287
	Ronan City Library	37	0	2	39	650	4	212	866
	St Ignatius School-Community Library	11	9	3	23	108	25	14	147
Lewis and Clark	Lewis and Clark Library	245	19	222	486	12,067	2,040	8,572	22,679
Liberty	Liberty County Library	24	1	12	37	193	72	230	495
Lincoln	Lincoln County Public Libraries	115	0	56	171	1,288	0	1,064	2,352
Madison	Madison Valley Public Library	56	14	52	122	1,713	638	1,355	3,706
	Sheridan Public Library	25	0	12	37	204	0	108	312
	Thompson-Hickman County Library	1	2	2	5	24	26	52	102
	Twin Bridges Public Library	50	0	3	53	290	0	120	410
McCone	George McCone Memorial County Library	3	0	0	3	216	0	0	216

Programs - SFY 2007

county	library	Programs Offered				Program Attendance			
		children	young adults	adults	total	children	young adults	adults	total
Meagher	Meagher County/City Library	43	0	1	44	73	0	6	79
Mineral	Mineral County Public Library	110	0	3	113	204	0	186	390
Missoula	Missoula Public Library	398	13	125	536	12,772	329	2,100	15,201
Musselshell	Roundup School-Community Library	35	13	9	57	381	353	300	1,034
Park	Livingston-Park County Public Library	203	4	36	243	3,765	113	605	4,483
Petroleum	Petroleum County School-Community Library	45	0	0	45	4,000	0	0	4,000
Phillips	Phillips County Library	47	1	17	65	579	12	321	912
Pondera	Conrad Public Library	161	12	18	191	2,818	96	928	3,842
	Valier Public Library	24	5	1	30	303	14	22	339
Powder River	Henry A Malley Memorial Library	30	0	2	32	504	0	78	582
Powell	William K. Kohrs Memorial Library	57	2	39	98	518	104	761	1,383
Prairie	Prairie County Library	37	0	17	54	415	0	177	592
Ravalli	Bitterroot Public Library	44	0	15	59	3,016	0	450	3,466
	Darby Community Public Library	46	1	13	60	769	21	191	981
	North Valley Public Library	44	0	23	67	528	0	700	1,228
Richland	Sidney-Richland County Library	55	3	17	75	1,590	87	427	2,104
Roosevelt	Roosevelt County Library	24	2	1	27	880	38	27	945
Rosebud	Rosebud County Library	263	41	88	392	2,538	697	1,932	5,167
Sanders	Plains Public Library District	20	6	6	32	300	50	120	470
	Preston Town County Library	2	1	1	4	53	6	4	63
	Thompson Falls Public Library	2	1	5	8	78	30	207	315
Sheridan	Sheridan County Library	30	1	3	34	223	8	122	353
Silver Bow	Butte-Silver Bow Public Library	185	1	3	189	5,498	6	56	5,560
Stillwater	Stillwater County Library	45	1	7	53	680	50	175	905
Sweet Grass	Carnegie Public Library	2	1	2	5	200	2	300	502
Teton	Choteau/Teton Public Library	120	6	6	132	880	25	180	1,085
	Dutton Public Library	1	1	1	3	5	8	6	19
	Fairfield Public Library	30	0	0	30	175	0	0	175
Toole	Toole County Library	73	0	11	84	920	0	165	1,085
Valley	Glasgow City-County Library	63	2	3	68	756	16	314	1,086
Wheatland	Harlowton Public Library	1	2	0	3	1,723	3,250	0	4,973
Wibaux	Wibaux Public Library	27	25	28	80	273	129	250	652
Yellowstone	Laurel Public Library	52	9	7	68	230	54	48	332
	Parmly Billings Library	395	32	117	544	14,683	346	2,657	17,686

Statewide Totals

6,270 416 1,787 8,473 152,414 13,055 50,457 215,926

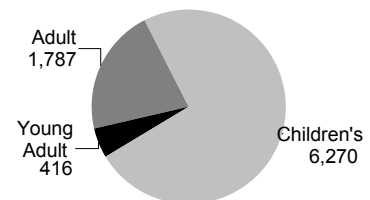
Top 5: Total Programs

Parmly Billings Library	544
Missoula Public Library	536
Flathead County Library	525
Lewis and Clark Library	486
Chouteau County Library	243
Livingston-Park County Publ	243

Top 5: Total Program Attendance

Lewis and Clark Library	22,679
Parmly Billings Library	17,686
Flathead County Library	16,234
Bozeman Public Library	16,148
Missoula Public Library	15,201

Total Statewide Programs



Interlibrary Loans - SFY 2007

county	library	Loaned			Borrowed		
		in state	out of state	total	in state	out of state	total
Beaverhead	Dillon Public Library	226	30	256	484	80	564
Big Horn	Big Horn County Public Library	453	56	509	232	14	246
Blaine	Blaine County Library	374	12	386	71	3	74
	Harlem Public Library	165	2	167	37	2	39
Broadwater	Broadwater School and Community Library	49	15	64	44	16	60
Carbon	Bridger Public Library	0	0	0	3	0	3
	Joliet Public Library	0	0	0	0	0	0
	Red Lodge Carnegie Library	0	0	0	205	20	225
Carter	Ekalaka Public Library	0	0	0	0	0	0
Cascade	Belt Public Library	0	0	0	28	0	28
	Great Falls Public Library	1,221	238	1,459	893	804	1,697
	Wedsworth Memorial Library	39	3	42	25	0	25
Chouteau	Chouteau County Library	112	0	112	120	1	121
Custer	Miles City Public Library	605	38	643	180	88	268
Daniels	Daniels County Library	7	0	7	224	91	315
Dawson	Glendive Public Library	1,484	33	1,517	543	92	635
Deer Lodge	Hearst Free Library	5,394	78	5,472	1,878	50	1,928
Fallon	Fallon County Library	202	66	268	225	193	418
Fergus	Denton Public Library	0	0	0	8	0	8
	Dorothy Asbjornson Community Library	0	0	0	0	0	0
	Lewistown Public Library	403	75	478	414	154	568
	Moore Public Library	1	0	1	2	0	2
Flathead	Flathead County Library	27,344	476	27,820	37,038	488	37,526
Gallatin	Belgrade Community Library	1,646	25	1,671	1,137	60	1,197
	Bozeman Public Library	2,007	282	2,289	2,989	658	3,647
	Manhattan Community Library	7	0	7	34	0	34
	Three Forks Community Library	951	0	951	704	59	763
	West Yellowstone Public Library	513	0	513	89	9	98
Garfield	Garfield County Library	0	0	0	30	0	30
Glacier	Glacier County Library	233	16	249	247	47	294
Granite	Drummond School Community Library	1,704	0	1,704	802	0	802
	Philipsburg Public Library	0	0	0	55	0	55
Hill	Havre-Hill County Library	592	69	661	435	96	531
Jefferson	Boulder Community Library	553	53	606	1,089	310	1,399
Judith Basin	Judith Basin County Free Library	131	10	141	55	0	55
Lake	Polson City Library	3,708	17	3,725	4,485	120	4,605
	Ronan City Library	156	19	175	141	76	217
	St Ignatius School-Community Library	70	17	87	168	84	252
Lewis and Clark	Lewis and Clark Library	1,317	933	2,250	1,358	1,404	2,762
Liberty	Liberty County Library	243	26	269	97	34	131
Lincoln	Lincoln County Public Libraries	424	80	504	1,016	657	1,673
Madison	Madison Valley Public Library	311	31	342	421	14	435
	Sheridan Public Library	89	50	139	65	56	121
	Thompson-Hickman County Library	75	15	90	110	9	119
	Twin Bridges Public Library	110	1	111	88	72	160
McCone	George McCone Memorial County Library	49	0	49	53	0	53

Interlibrary Loans - SFY 2007

county	library	Loaned			Borrowed		
		in state	out of state	total	in state	out of state	total
Meagher	Meagher County/City Library	232	31	263	854	639	1,493
Mineral	Mineral County Public Library	66	13	79	41	28	69
Missoula	Missoula Public Library	37,109	957	38,066	25,419	1,619	27,038
Musselshell	Roundup School-Community Library	130	9	139	300	35	335
Park	Livingston-Park County Public Library	217	102	319	357	581	938
Petroleum	Petroleum County School-Community Library	83	32	115	187	77	264
Phillips	Phillips County Library	59	4	63	222	1	223
Pondera	Conrad Public Library	155	11	166	171	32	203
	Valier Public Library	86	7	93	179	15	194
Powder River	Henry A Malley Memorial Library	72	6	78	227	60	287
Powell	William K. Kohrs Memorial Library	464	153	617	215	162	377
Prairie	Prairie County Library	65	15	80	222	43	265
Ravalli	Bitterroot Public Library	13,515	71	13,586	8,832	1,040	9,872
	Darby Community Public Library	0	0	0	25	9	34
	North Valley Public Library	80	19	99	125	30	155
Richland	Sidney-Richland County Library	425	76	501	121	88	209
Roosevelt	Roosevelt County Library	428	16	444	353	278	631
Rosebud	Rosebud County Library	727	388	1,115	206	160	366
Sanders	Plains Public Library District	239	31	270	329	55	384
	Preston Town County Library	3	0	3	172	13	185
	Thompson Falls Public Library	324	19	343	514	201	715
Sheridan	Sheridan County Library	347	127	474	435	81	516
Silver Bow	Butte-Silver Bow Public Library	914	89	1,003	462	698	1,160
Stillwater	Stillwater County Library	51	7	58	318	15	333
Sweet Grass	Carnegie Public Library	0	0	0	143	15	158
Teton	Choteau/Teton Public Library	140	10	150	163	10	173
	Dutton Public Library	0	0	0	6	0	6
	Fairfield Public Library	2	0	2	76	24	100
Toole	Toole County Library	121	5	126	242	111	353
Valley	Glasgow City-County Library	501	27	528	986	514	1,500
Wheatland	Harlowton Public Library	0	0	0	0	0	0
Wibaux	Wibaux Public Library	194	12	206	106	5	111
Yellowstone	Laurel Public Library	9	0	9	96	4	100
	Parmly Billings Library	486	67	553	256	234	490

Statewide Totals

110,212 5,070 115,282 100,682 12,738 113,420

Top 5: Interlibrary Loans - In State

Missoula Public Library	37,109
Flathead County Library	27,344
Bitterroot Public Library	13,515
Hearst Free Library	5,394
Polson City Library	3,708

Top 5: Interlibrary Borrows - In State

Flathead County Library	37,038
Missoula Public Library	25,419
Bitterroot Public Library	8,832
Polson City Library	4,485
Bozeman Public Library	2,989

Interlibrary Loans by Service Population- SFY 2007

county	library	Loaned			Borrowed		
		in state	out of state	total	in state	out of state	total
Over 25,000							
Gallatin	Bozeman Public Library	2,007	282	2,289	2,989	658	3,647
Silver Bow	Butte-Silver Bow Public Library	914	89	1,003	462	698	1,160
Flathead	Flathead County Library	27,344	476	27,820	37,038	488	37,526
Cascade	Great Falls Public Library	1,221	238	1,459	893	804	1,697
Lewis and Clark	Lewis and Clark Library	1,317	933	2,250	1,358	1,404	2,762
Missoula	Missoula Public Library	37,109	957	38,066	25,419	1,619	27,038
Yellowstone	Parmly Billings Library	486	67	553	256	234	490
		70,398	3,042	73,440	68,415	5,905	74,320
10,000 - 24,999							
Gallatin	Belgrade Community Library	1,646	25	1,671	1,137	60	1,197
Big Horn	Big Horn County Public Library	453	56	509	232	14	246
Ravalli	Bitterroot Public Library	13,515	71	13,586	8,832	1,040	9,872
Jefferson	Boulder Community Library	553	53	606	1,089	310	1,399
Glacier	Glacier County Library	233	16	249	247	47	294
Hill	Havre-Hill County Library	592	69	661	435	96	531
Fergus	Lewistown Public Library	403	75	478	414	154	568
Lincoln	Lincoln County Public Libraries	424	80	504	1,016	657	1,673
Park	Livingston-Park County Public Library	217	102	319	357	581	938
Custer	Miles City Public Library	605	38	643	180	88	268
Lake	Polson City Library	3,708	17	3,725	4,485	120	4,605
Roosevelt	Roosevelt County Library	428	16	444	353	278	631
		22,777	618	23,395	18,777	3,445	22,222
5,000 - 9,999							
Chouteau	Chouteau County Library	112	0	112	120	1	121
Beaverhead	Dillon Public Library	226	30	256	484	80	564
Valley	Glasgow City-County Library	501	27	528	986	514	1,500
Dawson	Glendive Public Library	1,484	33	1,517	543	92	635
Deer Lodge	Hearst Free Library	5,394	78	5,472	1,878	50	1,928
Yellowstone	Laurel Public Library	9	0	9	96	4	100
Ravalli	North Valley Public Library	80	19	99	125	30	155
Carbon	Red Lodge Carnegie Library	0	0	0	205	20	225
Lake	Ronan City Library	156	19	175	141	76	217
Rosebud	Rosebud County Library	727	388	1,115	206	160	366
Richland	Sidney-Richland County Library	425	76	501	121	88	209
Lake	St Ignatius School-Community Library	70	17	87	168	84	252
Stillwater	Stillwater County Library	51	7	58	318	15	333
Toole	Toole County Library	121	5	126	242	111	353
Powell	William K. Kohrs Memorial Library	464	153	617	215	162	377
		9,820	852	10,672	5,848	1,487	7,335
3,500 - 4,999							
Blaine	Blaine County Library	374	12	386	71	3	74
Broadwater	Broadwater School and Community Library	49	15	64	44	16	60
Sweet Grass	Carnegie Public Library	0	0	0	143	15	158
Pondera	Conrad Public Library	155	11	166	171	32	203
Ravalli	Darby Community Public Library	0	0	0	25	9	34
Mineral	Mineral County Public Library	66	13	79	41	28	69
Phillips	Phillips County Library	59	4	63	222	1	223
Sanders	Plains Public Library District	239	31	270	329	55	384
Musselshell	Roundup School-Community Library	130	9	139	300	35	335
Sheridan	Sheridan County Library	347	127	474	435	81	516
Sanders	Thompson Falls Public Library	324	19	343	514	201	715
Madison	Thompson-Hickman County Library	75	15	90	110	9	119
Gallatin	Three Forks Community Library	951	0	951	704	59	763
		2,769	256	3,025	3,109	544	3,653

Interlibrary Loans by Service Population- SFY 2007

county	library	Loaned			Borrowed		
		in state	out of state	total	in state	out of state	total
2,000 - 3,499							
Carbon	Bridger Public Library	0	0	0	3	0	3
Teton	Choteau/Teton Public Library	140	10	150	163	10	173
Daniels	Daniels County Library	7	0	7	224	91	315
Fallon	Fallon County Library	202	66	268	225	193	418
Blaine	Harlem Public Library	165	2	167	37	2	39
Wheatland	Harlowton Public Library	0	0	0	0	0	0
Carbon	Joliet Public Library	0	0	0	0	0	0
Judith Basin	Judith Basin County Free Library	131	10	141	55	0	55
Liberty	Liberty County Library	243	26	269	97	34	131
Gallatin	Manhattan Community Library	7	0	7	34	0	34
	West Yellowstone Public Library	513	0	513	89	9	98
		1,408	114	1,522	927	339	1,266
1,200 - 1,999							
Cascade	Belt Public Library	0	0	0	28	0	28
Teton	Dutton Public Library	0	0	0	6	0	6
Carter	Ekalaka Public Library	0	0	0	0	0	0
Teton	Fairfield Public Library	2	0	2	76	24	100
Garfield	Garfield County Library	0	0	0	30	0	30
McCone	George McCone Memorial County Library	49	0	49	53	0	53
Powder River	Henry A Malley Memorial Library	72	6	78	227	60	287
Meagher	Meagher County/City Library	232	31	263	854	639	1,493
Granite	Philipsburg Public Library	0	0	0	55	0	55
Prairie	Prairie County Library	65	15	80	222	43	265
Sanders	Preston Town County Library	3	0	3	172	13	185
Pondera	Valier Public Library	86	7	93	179	15	194
Cascade	Wedsworth Memorial Library	39	3	42	25	0	25
		548	62	610	1,927	794	2,721
1,199 and Under							
Fergus	Denton Public Library	0	0	0	8	0	8
	Dorothy Asbjornson Community Library	0	0	0	0	0	0
Granite	Drummond School Community Library	1,704	0	1,704	802	0	802
Madison	Madison Valley Public Library	311	31	342	421	14	435
Fergus	Moore Public Library	1	0	1	2	0	2
Petroleum	Petroleum County School-Community Library	83	32	115	187	77	264
Madison	Sheridan Public Library	89	50	139	65	56	121
	Twin Bridges Public Library	110	1	111	88	72	160
Wibaux	Wibaux Public Library	194	12	206	106	5	111
		2,492	126	2,618	1,679	224	1,903
Statewide Totals		110,212	5,070	115,282	100,682	12,738	113,420

Library Facility Adequacy - SFY 2007

county	library	ADA Assessment		For Population Served	
		completed	accessible needs	adequate	needs
Beaverhead	Dillon Public Library	Yes	Yes		Build a New Library
Big Horn	Big Horn County Public Library	Yes	Yes	Yes	
Blaine	Blaine County Library		Yes		
	Harlem Public Library				Major Remodeling
Broadwater	Broadwater School and Community Library	Yes	Yes	Yes	
Carbon	Bridger Public Library			Major Remodeling	Major Remodeling
	Joliet Public Library	Yes	Yes	Yes	
	Red Lodge Carnegie Library		Yes	Yes	
Carter	Ekalaka Public Library			Minor Remodeling	
Cascade	Belt Public Library		Yes	Yes	
	Great Falls Public Library	Yes	Yes	Yes	
	Wedsworth Memorial Library		Yes		Major Remodeling
Chouteau	Chouteau County Library	Yes	Yes	Yes	
Custer	Miles City Public Library	Yes	Yes	Yes	
Daniels	Daniels County Library		Yes	Yes	
Dawson	Glendive Public Library	Yes	Yes	Yes	
Deer Lodge	Hearst Free Library		Yes	Yes	
Fallon	Fallon County Library		Yes	Yes	
Fergus	Denton Public Library		Yes	Yes	
	Dorothy Asbjornson Community Library	Yes	Yes	Yes	
	Lewistown Public Library	Yes	Yes	Yes	
	Moore Public Library			Major Remodeling	Yes
Flathead	Flathead County Library	Yes	Yes		Build a New Library
Gallatin	Belgrade Community Library	Yes	Yes	Yes	
	Bozeman Public Library	Yes	Yes	Yes	
	Manhattan Community Library		Yes		Minor Remodeling
	Three Forks Community Library			Minor Remodeling	Yes
	West Yellowstone Public Library		Yes	Yes	
Garfield	Garfield County Library	Yes	Yes	Yes	
Glacier	Glacier County Library	Yes	Yes	Yes	
Granite	Drummond School Community Library		Yes	Yes	
	Philipsburg Public Library		Yes	Yes	
Hill	Havre-Hill County Library	Yes	Yes	Yes	
Jefferson	Boulder Community Library	Yes	Yes		Major Remodeling
Judith Basin	Judith Basin County Free Library			Minor Remodeling	Major Remodeling
Lake	Polson City Library			Major Remodeling	Major Remodeling
	Ronan City Library	Yes		Yes	
	St Ignatius School-Community Library				
Lewis and Clark	Lewis and Clark Library	Yes	Yes	Yes	
Liberty	Liberty County Library	Yes	Yes	Yes	
Lincoln	Lincoln County Public Libraries	Yes		Major Remodeling	Yes
Madison	Madison Valley Public Library	Yes	Yes		Major Remodeling
	Sheridan Public Library	Yes	Yes	Yes	
	Thompson-Hickman County Library	Yes	Yes		Major Remodeling
	Twin Bridges Public Library		Yes		Major Remodeling
McCone	George McCone Memorial County Library		Yes	Yes	

Library Facility Adequacy - SFY 2007

county	library	ADA Assessment		For Population Served	
		completed	accessible needs	adequate	needs
Meagher	Meagher County/City Library	Yes	Yes		Build a New Library
Mineral	Mineral County Public Library		Yes		Major Remodeling
Missoula	Missoula Public Library	Yes	Yes	Yes	
Musselshell	Roundup School-Community Library		Yes	Yes	
Park	Livingston-Park County Public Library	Yes	Yes	Yes	
Petroleum	Petroleum County School-Community Library		Yes	Yes	
Phillips	Phillips County Library			Major Remodeling	Yes
Pondera	Conrad Public Library	Yes	Yes		Yes
	Valier Public Library				
Powder River	Henry A Malley Memorial Library		Yes		Yes
Powell	William K. Kohrs Memorial Library		Yes		Yes
Prairie	Prairie County Library			Minor Remodeling	Yes
Ravalli	Bitterroot Public Library	Yes	Yes		Major Remodeling
	Darby Community Public Library	Yes	Yes		Minor Remodeling
	North Valley Public Library		Yes		
Richland	Sidney-Richland County Library			Major Remodeling	Build a New Library
Roosevelt	Roosevelt County Library	Yes	Yes		Major Remodeling
Rosebud	Rosebud County Library	Yes		Minor Remodeling	Yes
Sanders	Plains Public Library District	Yes	Yes		
	Preston Town County Library	Yes	Yes		Yes
	Thompson Falls Public Library	Yes	Yes		Yes
Sheridan	Sheridan County Library		Yes		Yes
Silver Bow	Butte-Silver Bow Public Library	Yes	Yes		Yes
Stillwater	Stillwater County Library	Yes	Yes		Yes
Sweet Grass	Carnegie Public Library			Major Remodeling	Major Remodeling
Teton	Choteau/Teton Public Library	Yes	Yes		Yes
	Dutton Public Library	Yes	Yes		Yes
	Fairfield Public Library		Yes		
Toole	Toole County Library		Yes		Minor Remodeling
Valley	Glasgow City-County Library			Major Remodeling	Major Remodeling
Wheatland	Harlowton Public Library	Yes	Yes		Yes
Wibaux	Wibaux Public Library	Yes	Yes		Yes
Yellowstone	Laurel Public Library		Yes		Major Remodeling
	Parmly Billings Library	Yes	Yes		Build a New Library

Count of Libraries ADA Accessible Needs Status

ADA Accessible	67
Major Remodeling	8
Minor Remodeling	5

Count of Adequacy for Population Served

ADA Accessible	57
Major Remodeling	15
Minor Remodeling	3
Build a New Library	5

Automation - SFY 2007

<i>county</i>	<i>library</i>	<i># of com- puters</i>	<i>online full text dbase</i>	<i>Internet Terminals staff public</i>	<i>has LAN</i>	<i>kind of intenet access</i>	<i>public access catalog</i>	<i>library system vendor/product</i>
Beaverhead	Dillon Public Library	5	5	2	6	Yes	512K Frame Relay	Yes SIRSI Corporation
Big Horn	Big Horn County Public Library	15	15	6	15	Yes	T1	Yes SIRSI Corporation
Blaine	Blaine County Library	6	6	2	6	Yes	256K DSL Modem	Yes SIRSI Corporation
	Harlem Public Library	2	2	2	2	Yes	256K DSL Modem	Yes epixtech, inc.
Broadwater	Broadwater School and Community Library	10	10	10	10	Yes	T1	Yes Sagebrush Corporation
Carbon	Bridger Public Library	2	2	1	2	Yes	Cable Modem	Follett Software Company
	Joliet Public Library	3	3	1	2	Yes	56K Modem	Follett Software Company
	Red Lodge Carnegie Library	5	5	2	5		Cable Modem	Sagebrush Corporation
Carter	Ekalaka Public Library	3	0	1	3		256K DSL Modem	Yes Follett Software Company
Cascade	Belt Public Library	4	4	4	4		256K DSL Modem	Sagebrush Corporation
	Great Falls Public Library	33	21	25	21	Yes	1MB+ DSL Modem	Yes SIRSI Corporation
	Wedsworth Memorial Library	6	5	1	5	Yes	Satellite	Follett Software Company
Chouteau	Chouteau County Library	12	11	4	12		512K DSL Modem	Sagebrush Corporation
Custer	Miles City Public Library	8	0	7	8	Yes	1MB+ DSL Modem	Yes SIRSI Corporation
Daniels	Daniels County Library	3	3	1	3	Yes	Other Type	Yes Sagebrush Corporation
Dawson	Glendive Public Library	13	11	6	10	Yes	Cable Modem	Yes SIRSI Corporation
Deer Lodge	Hearst Free Library	12	12	5	12	Yes	MicroWave	Yes SIRSI Corporation
Fallon	Fallon County Library	8	5	4	5	Yes	512K DSL Modem	Yes Follett Software Company
Fergus	Denton Public Library	1	1	1	1		1MB DSL Modem	Yes Follett Software Company
	Dorothy Asbjornson Community Library	2	2	1	2		1MB+ DSL Modem	Right On Programs
	Lewistown Public Library	11	11	8	11	Yes	MicroWave	Yes SIRSI Corporation
	Moore Public Library	1	0	1	1		256K DSL Modem	
Flathead	Flathead County Library	69	69	32	69	Yes	T1	Yes SIRSI Corporation
Gallatin	Belgrade Community Library	11	9	6	11	Yes	256K DSL Modem	Yes SIRSI Corporation
	Bozeman Public Library	40	40	32	40	Yes	Other Type	Yes SIRSI Corporation
	Manhattan Community Library	10	13	3	10	Yes	T3	Yes Follett Software Company
	Three Forks Community Library	3	3	1	3	Yes	MicroWave	Yes SIRSI Corporation
	West Yellowstone Public Library	8	8	4	8	Yes	256K DSL Modem	Yes SIRSI Corporation
Garfield	Garfield County Library	4	4	1	3	Yes	256K DSL Modem	Yes Sagebrush Corporation
Glacier	Glacier County Library	8	7	5	7	Yes	256K Frame Relay	Yes Follett Software Company
Granite	Drummond School Community Library	7	7	2	7	Yes	T1	Yes SIRSI Corporation
	Philipsburg Public Library	2	0	0	2		512K DSL Modem	OCLC
Hill	Havre-Hill County Library	3	18	5	9	Yes	T1	Yes SirsiDynix
Jefferson	Boulder Community Library	24	24	6	18		T1	Yes SIRSI Corporation

Automation - SFY 2007

<i>county</i>	<i>library</i>	<i># of com-puters</i>	<i>online full text dbase</i>	<i>Internet Terminals staff public</i>	<i>has LAN</i>	<i>kind of internet access</i>	<i>public access catalog</i>	<i>library system vendor/product</i>
Judith Basin	Judith Basin County Free Library	5	5	2	5	Yes	512K DSL Modem	Sagebrush Corporation
Lake	Polson City Library	11	10	6	10	Yes	Other Type	Yes SIRSI Corporation
	Ronan City Library	7	6	3	7	Yes	1MB+ DSL Modem	Yes Sagebrush Corporation
	St Ignatius School-Community Library	47	47	3	47	Yes	T1	Yes
Lewis and Clark	Lewis and Clark Library	36	36	37	29	Yes	1MB+ DSL Modem	Yes INFOR
Liberty	Liberty County Library	0	10	3	10	Yes	512K DSL Modem	epitech, inc.
Lincoln	Lincoln County Public Libraries	16	16	11	16	Yes	T1	Yes Infovision
Madison	Madison Valley Public Library	4	4	2	4	Yes	1MB DSL Modem	Yes SIRSI Corporation
	Sheridan Public Library	6	6	2	6	Yes	512K DSL Modem	Yes SIRSI Corporation
	Thompson-Hickman County Library	5	5	2	5		1MB DSL Modem	Yes SIRSI Corporation
	Twin Bridges Public Library	5	5	2	5	Yes	512K DSL Modem	Yes SIRSI Corporation
McCone	George McCone Memorial County Library	2	3	2	2	Yes	256K DSL Modem	
Meagher	Meagher County/City Library	8	8	2	8	Yes	512K DSL Modem	Yes SIRSI Corporation
Mineral	Mineral County Public Library	4	4	2	4		512K DSL Modem	Yes Winnebago
Missoula	Missoula Public Library	56	56	47	56	Yes	T1	Yes SIRSI Corporation
Musselshell	Roundup School-Community Library	23	23	3	23	Yes	1MB+ DSL Modem	Follett Software Company
Park	Livingston-Park County Public Library	17	10	6	10	Yes	1MB DSL Modem	Yes Sagebrush Corporation
Petroleum	Petroleum County School-Community Library	4	4	3	4	Yes	256K DSL Modem	Yes Sagebrush Corporation
Phillips	Phillips County Library	4	3	4	3		128K Frame Relay	Yes Sagebrush Corporation
Pondera	Conrad Public Library	10	5	4	7	Yes	256K Frame Relay	Yes Follett Software Company
	Valier Public Library	4	6	2	4	Yes	1MB DSL Modem	Follett Software Company
Powder River	Henry A Malley Memorial Library	3	3	3	3		512K DSL Modem	
Powell	William K. Kohrs Memorial Library	9	5	2	5		1MB+ DSL Modem	Yes Follett Software Company
Prairie	Prairie County Library	4	6	2	4	Yes	256K DSL Modem	
Ravalli	Bitterroot Public Library	10	5	7	10	Yes	512K DSL Modem	Yes SIRSI Corporation
	Darby Community Public Library	4	4	3	4	Yes	Other Type	Yes Sirsi
	North Valley Public Library	4	4	5	4	Yes	MicroWave	
Richland	Sidney-Richland County Library	12	12	4	10	Yes	Cable Modem	Yes Follett Software Company
Roosevelt	Roosevelt County Library	13	12	9	12	Yes	512K DSL Modem	Yes SIRSI Corporation
Rosebud	Rosebud County Library	18	16	7	13	Yes	512K DSL Modem	Yes SIRSI Corporation
Sanders	Plains Public Library District	6	6	2	5	Yes	1MB DSL Modem	Yes SIRSI Corporation
	Preston Town County Library	3	0	2	2	Yes	512K DSL Modem	Sagebrush Corporation
	Thompson Falls Public Library	7	6	3	6	Yes	1MB DSL Modem	Yes SIRSI Corporation

Automation - SFY 2007

county	library	# of com-puters	online full text dbase	Internet Terminals public	has LAN	kind of internet access	public access catalog	library system vendor/product
Sheridan	Sheridan County Library	6	2	9	3	Yes T1	Yes	Sagebrush Corporation
Silver Bow	Butte-Silver Bow Public Library	15	10	8	10	Yes MicroWave	Yes	Sagebrush Corporation
Stillwater	Stillwater County Library	5	4	2	4	Yes 1MB DSL Modem		Sagebrush Corporation
Sweet Grass	Carnegie Public Library	7	7	3	7	Yes 512K DSL Modem	Yes	SIRSI Corporation
Teton	Choteau/Teton Public Library	13	9	2	9	Yes T1	Yes	Sagebrush Corporation
	Dutton Public Library	5	4	1	5			
	Fairfield Public Library	5	5	1	5	Yes Cable Modem	Yes	Sagebrush Corporation
Toole	Toole County Library	7	2	3	7	Yes 256K Frame Relay		Follett Software Company
Valley	Glasgow City-County Library	5	5	5	5	Yes 256K DSL Modem	Yes	Sagebrush Corporation
Wheatland	Harlowton Public Library	17	17	2	17	Yes 512K DSL Modem		
Wibaux	Wibaux Public Library	6	6	3	6	Yes 256K DSL Modem	Yes	Follett Software Company
Yellowstone	Laurel Public Library	8	8	3	8	Yes Cable Modem	Yes	SIRSI Corporation
	Parmly Billings Library	36	28	34	20	Yes T1	Yes	SirsiDynix, Inc.

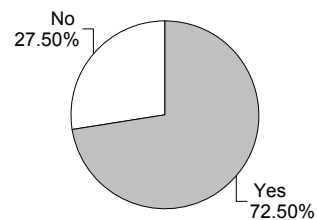
Statewide Totals

856 794 465 782

Count of Library System Vendor Products

Follett Software Company	15	18.75%
Sagebrush Corporation	18	22.50%
SIRSI Corporation	29	36.25%
None	8	10.00%
Others	10	12.50%

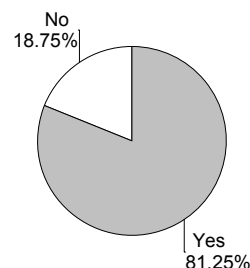
Count of Library Public Access Catalogs



Count of Library Kinds of Internet Access

1MB DSL Modem	8	10.00%
1MB+ DSL Modem	7	8.75%
256K DSL Modem	14	17.50%
256K Frame Relay	3	3.75%
512K DSL Modem	16	20.00%
Cable Modem	6	7.50%
MicroWave	5	6.25%
T1	12	15.00%
Others	9	11.25%

Count of Library Local Area Networks



Definitions, Abbreviations and Acronyms

MLS	Master of Library Science
NA	Not Available
SFY	State Fiscal Year July through June
Sq	Square
w/	With

Contact Information

Montana State Library
1515 East Sixth Avenue
PO Box 201800
Helena, MT 59620-1800

Tracy Cook
Toll Free in Montana: 866-843-6524
Fax: 406-444-0266
Email: tcook@mtlib.org

Maggie Meredith
Phone: 406-444-0224
Toll Free in Montana: 800-338-5087
Fax: 406-444-0266
Email: mmeredith@mt.gov

Suzanne Reymer
Phone: 406-255-0729
Toll Free in Montana: 888-826-0837
Fax: 406-255-0732
Email: sreymer@mtlib.org

Appendix A

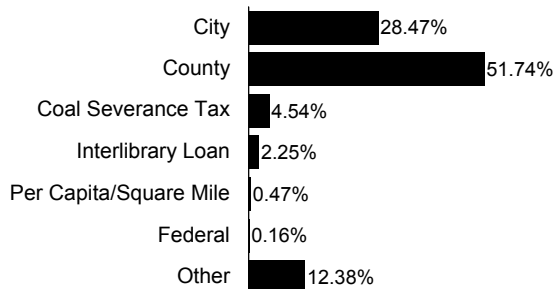
2007 Average Revenue and Expense Charts

The charts show Average Revenue and Expenses by Service Population. This information is intended as a tool to assist in the interpretation of the Public Library Statistics. For more information on possible ways to interpret these charts, please contact the Montana State Library.

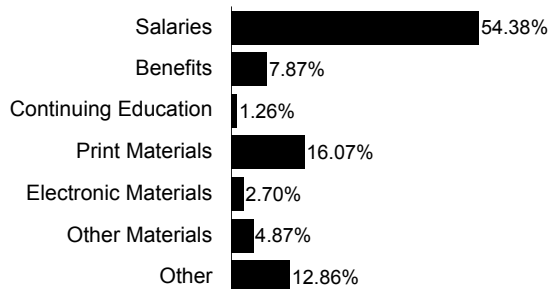
Revenue

Expense

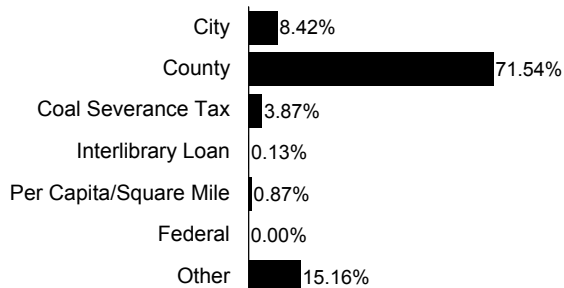
Service Population - 1,199 and Under



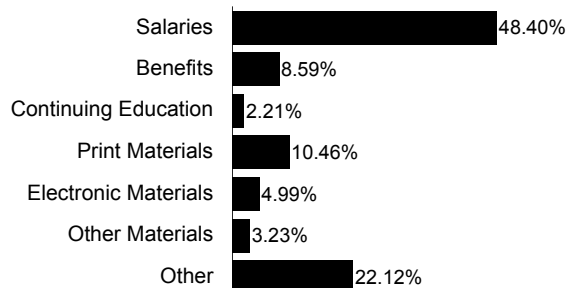
Service Population - 1,199 and Under



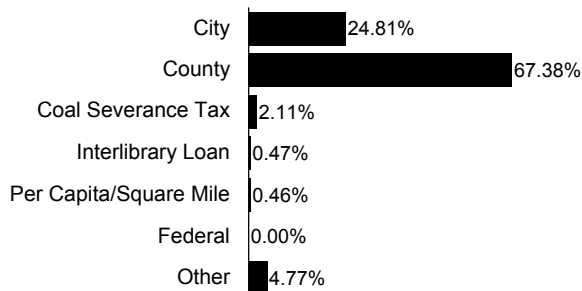
Service Population - 1,200 - 1,999



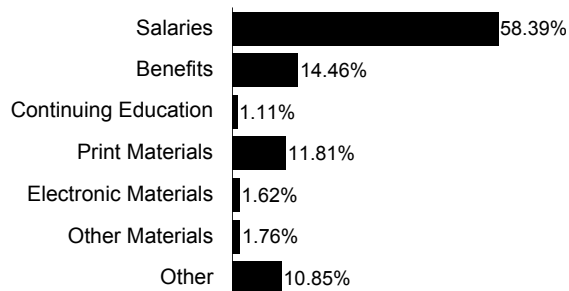
Service Population - 1,200 - 1,999



Service Population - 2,000 - 3,499



Service Population - 2,000 - 3,499



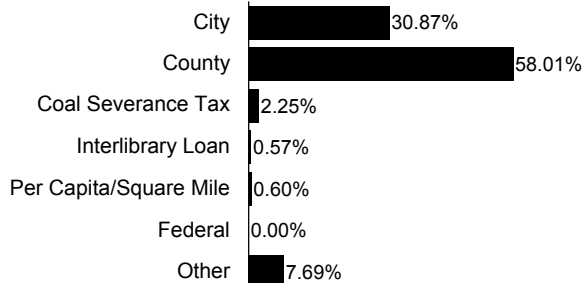
Appendix A

2007 Average Revenue and Expense Charts

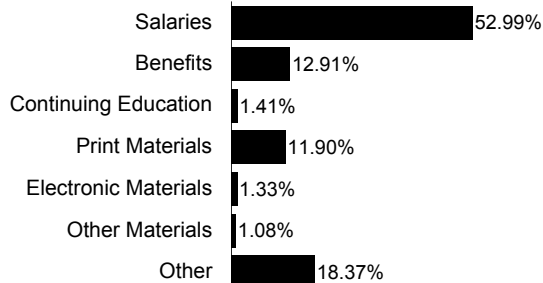
Revenue

Expense

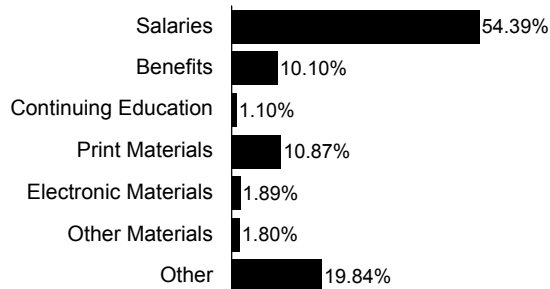
Service Population - 3,500 - 4,999



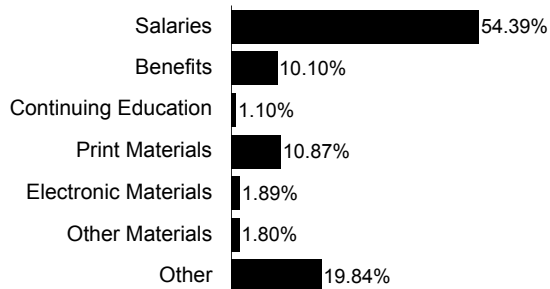
Service Population - 3,500 - 4,999



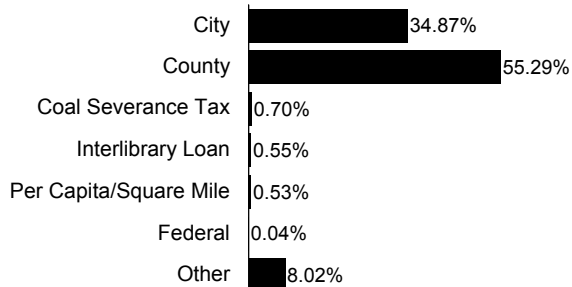
Service Population - 5,000 - 9,999



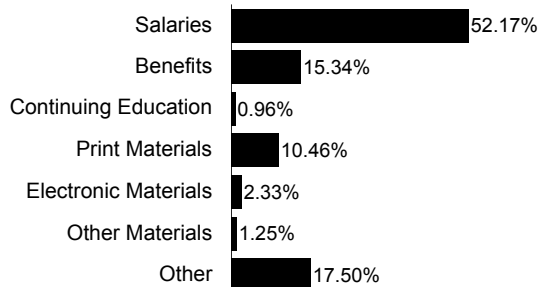
Service Population - 5,000 - 9,999



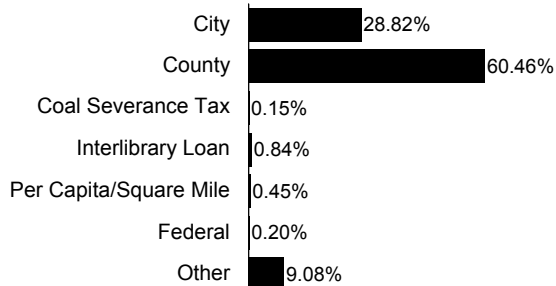
Service Population - 10,000 - 24,999



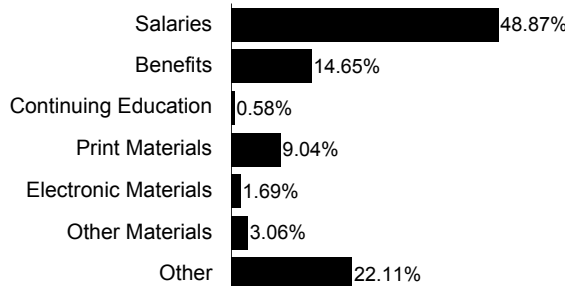
Service Population - 10,000 - 24,999



Service Population - Over 25,000



Service Population - Over 25,000





This publication is available in alternative formats upon request. One hundred and fifty copies of the Public Library Statistics were published at state expense. Publication and distribution expense information are on file with the Montana Department of Administration.