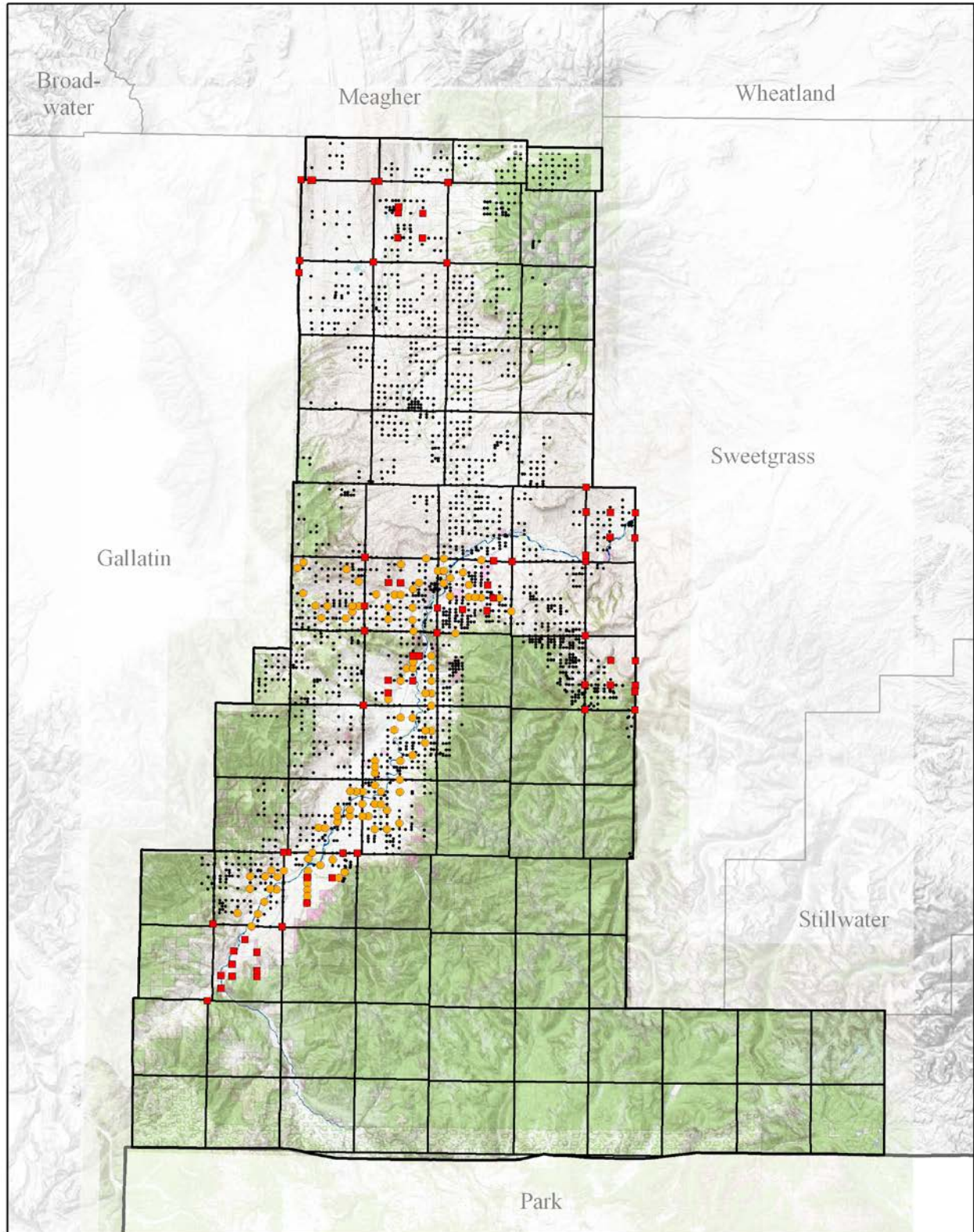


GRANT APPLICATION MONTANA LAND INFORMATION ACT FISCAL YEAR 2013



Submitted By: Park County, Montana

APPLICANT INFORMATION

Applicant: Park County, Montana- Local Government

Contact: Erica Hoffman, GIS/IT Manager

Agency: Park County, Montana- Local Government

Mailing Address: 414 East Callender

City: Livingston

County: Park

State: Montana

Zip: 59047

Contact Email: ehoffman@parkcounty.org

Contact Fax: (406)222-4109

Contact Telephone : (406)222-4197

Department : GIS/IT

PARTICIPATING PARTNER

Principle Contact: William C. Grayson, Land Surveyor

Agency: U.S.D.A. Bureau of Land Management

Mailing Address: 5001 Southgate Drive, P.O. Box 36800

City: Billings

County: Yellowstone

State: Montana

Zip: 59107

Contact Email: wgrayson@blm.gov

Contact Telephone (406) 896-5009

PARTICIPATING PARTNER

Principle Contact: Stewart Kirkpatrick, GIS Bureau Chief

Agency: MT DOA, Information Technology Services Division

Mailing Address: Room 229, Mitchell Building, 125 North Roberts

City: Helena

County: Lewis and Clark

State: Montana

Zip: 59620

Contact Email: skirkpatrick@mt.gov

Contact Telephone: (406) 444-2700

PARTICIPATING PARTNER

Principle Contact: Ed Meese, City Manager

Agency: City of Livingston, Montana

Mailing Address: 414 Calender

City: Livingston

County: Park

State: Montana

Zip: 59047

Contact Email: emeese@livingstonmontana.org

Contact Telephone: (406)222-6000

ADDITIONAL PARTICIPATING PARTNERS

Local Surveying Community

The Local Surveying Community will benefit from contracts with Park County and available Public Land Survey System (PLSS) control data collected and uploaded to the Montana Control Point Database. In addition, corner records will be filed and kept in the Clerk and Recorder's Office for future reference by the public and Surveyors/Engineers needing coordinate references.

DATE SUBMITTED

Date Submitted February 15, 2012

DATE RECEIVED

DESCRIPTIVE TITLE OF PROJECT

Enhancement of the Bureau of Land Management's (BLM) Geographic Coordinate Data Base (GCDB) through Control Surveys, supplementing the Geodetic Control Theme as a means for adjusting the Cadastral Theme and the Administrative Boundary Theme within Park County, Montana and Southwestern Montana. This Geodetic Control Theme Project is year 1 of a 10 year phased project that builds upon the 2008 and 2010 control that was collected statewide.

RELEVANCE AND PUBLIC BENEFIT

This project closely aligns with the following Land Plan Priorities as listed in the 2012/2013 Montana Land Information Plan:

B1: MSDI Data Partner Support

B1.1 MSDI data partners contributing to statewide framework data may apply for grants according to the published MLIA grant application process.

B1.2 Those data partners must work in advance with the MSDI Theme Stewards to provide data in common formats that promote data integrations.

Enhancement of geodetic control within Montana began in the 1990's with a core group of Federal, State, Local, Tribal and private partners. Significant efforts were made in the 2006-2009 timeframe with the Montana Control Point Database (MCDB) becoming publicly available on-line, providing Montana's land surveyors with a means to store and manage their geodetic and mapping control that is not part of the National Geodetic Survey's (NGS) database, and to provide the public with a free access to reliable, up to date geodetic and mapping control.

In 2008, 111 control points in ten townships were collected in Park County. This data was sent to the Bureau of Land Management (BLM), incorporated into the GCDB and the PLSS adjusted. Subsequently, the Park County Parcel Layer was adjusted to the GCDB in 2009. Unfortunately, the additional control did not provide the level of adjustment as was anticipated. The Parcel Layer as adjusted to the GCDB, is still off by 100+ feet in many areas, including the City of Livingston and other populated areas. In 2010, the BLM, through ARRA funding, attempted to locate 70 additional corners. Of those 70, they were successful in collecting 46. We anticipate that this additional geodetic control will provide adjustment to the GCDB, but most likely not enough to benefit Park County with the Parcel Layer adjustment.

Park County is committed to the Cadastral Registration and Geodetic Control refinement with the project goal to meet an accuracy level of 5-10 feet (3-5 meters) countywide within 10 years. This Project is very closely aligned with the Land Plan Priorities as described in the 2012/2013 Montana Land Information Plan, Priorities A2. Park County will be using the 'Gallatin County Model' (Gallatin County, Montana Geodetic Control Theme Project) which has proven to be successful during the past 7 years of data collection. Gallatin County has seen a vast improvement on their Geodetic Control, and Park County will be working closely with the Gallatin County GIS Department, applying their strategic methodology to the Park County collection process. The deliverables for this Project consists of coordinate collection within Park County, Montana, that will, through its addition to the BLM GCDB, refine the accuracy of the Cadastral Theme for Federal, State, Local and Private interests.

Specifically, the Project will address these specific action items that directly benefit both public and private entities:

- Advance the collection of the Geodetic Control Theme throughout Park County, Montana
 - Collection of coordinate data for the BLM GCDB
 - Locate, collect, photograph, document and preserve control points
 - Data will be collected in a method that validates accuracy and integrity by Registered Land Surveyors
 - State and Federal data collection standards strictly followed

- Refine the accuracy of the Cadastral Theme for Federal, State, Local and Private interests
 - Adjust a completed and maintained cadastral layer to useful levels of accuracy
 - Leverage an existing commitment of funds and maintenance personnel in Park County
 - Prioritize collection areas based on population, degree of error, and specific needs
 - Work with the Montana Base Map Service Center to integrate updates

- Refine the accuracy of the Administrative Boundaries Theme for Federal, State, Local and Private interests
 - Maintain Administrative boundaries for public and private consumption
 - Provide updated Administrative Boundaries to the US Census Bureau
 - Research and modify Themes based on public and private feed-back

- Establish collaborative partnerships between the GIS and Surveying Communities in Montana
 - Data will be made available to all coordinate reference users
 - Enhances the usefulness of GIS data to the non-GIS professional
 - Demonstrates the connectivity of Geodetic Control from local surveyors with GIS and Cadastral data
 - Engage local municipalities and private entities in the collection and refinement of control data
 - Develop and upload control to the Montana Control Point Database

SCOPE OF WORK

Park County has developed a long-term strategic plan that will leverage MLIA funds and establish the internal and external partnerships necessary to enhance the Geodetic Control Theme. This will be accomplished by working with internal departments, Registered Land Surveyors, the BLM and the City of Livingston in a joint GCDB Accuracy Enhancement Plan.

Park County GIS is committed to maintaining adjustments to the Cadastral and Administrative Boundaries themes as new GCDB Control Surveys are completed and integrated into the Geodetic Control Theme.

Phase I- Year 1 work will begin in Fiscal Year 2013 and will be completed in Phase 1- Year 5, Fiscal Year 2018. Phase II (Fiscal Years 2019-2023) will target areas that need additional control due to unacceptable control shift, collecting points that may, due to terrain or other circumstances, be more difficult to obtain, or require complete re-monumentation. Prioritization will be in areas of greater population and/or development. The Phase II collection prioritization will depend heavily on the results of Phase I correction.

Phase II will also utilize public and private partnerships that are created through Phase I, and will include, if possible, any USDA Forest Service, National Park Service or other data that have been discovered through the partnership process.

GOALS, OBJECTIVES AND TASKS

Involve Local Surveyors in the Process and Generate Project Buy-In

■ Develop a Pre-Qualified List of Local Registered Land Surveyors

Park County will release a Request for Qualifications for Land Surveying Services in June 2012 in order to develop a pre-qualified list for Land Surveying Services. Park County will utilize guidelines and SOP's developed by Park County, Montana during their pre-qualification process in order to 1) maintain consistency with Park County collection standards that have a proven track record, and 2) to eliminate dual standards and requirements, where possible, on the surveying community.

Interviews to determine the ranking of the top 4 firms will be scheduled during June and July 2012. The pre-qualified list is expected to last throughout the remainder of Phase II of the overall project plan and replaces the list established at the beginning of Phase I. Using this pre-qualified list with this next phase, contracts will be bid out to the most competitive firm.

Develop an Overall Geographic Plan

■ Divide the Geographic Areas into Manageable Blocks

Park County contains 82 Townships (or partial Townships), with roughly 24 Townships comprised of Federal Land. In 2008, control points were collected in 10 Townships, primarily in the I-90 and U.S. Highway 89 corridor. (Figure 1). The 2010 BLM ARRA funded control point collection project provided an additional 46 corners located in 12 Townships (Figure 2). The 2008 PLSS adjustment netted only minor geodetic corrections in Park County. The 2010 GCDB data and adjusted PLSS will be released in March, 2012. While some positive adjustment is expected, Park County will require additional control point acquisition in order to achieve the desired accuracy level of 3-5 meters.

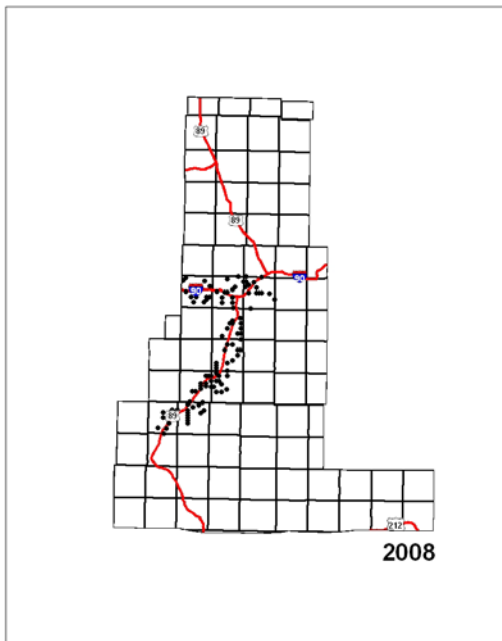


Figure 1.

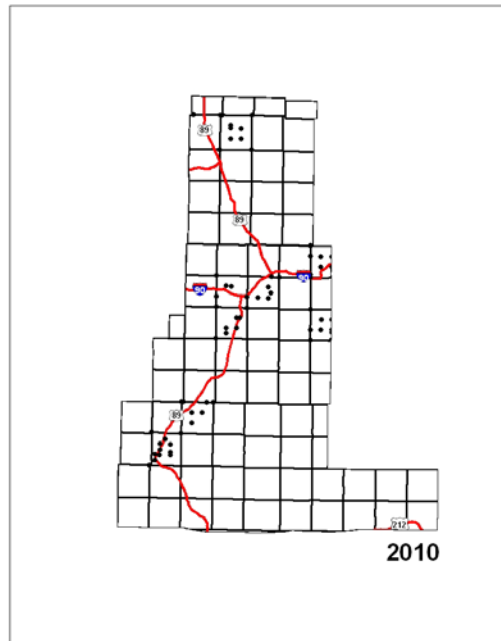


Figure 2.

Figure 3 displays the Phase I Geodetic Control Theme Project geographic areas that are proposed for Fiscal Years 2013 through 2018. Geographic areas are color coded by the Fiscal Years projected for the duration of this Phase.

Figure 4 indicates the geographic areas that have historically proven to exhibit the largest Cadastral Theme errors in the past. Again, the geographic areas are color coded by Fiscal Year. These, coincidentally, are the most populated and developed areas. Areas scheduled

for the Phase II Geodetic Control Theme Project have been selected based on the need to further refine geodetic control in these developed areas.

Jurisdictional areas impacted by this project include land administered by the Gallatin National Forest, BLM, National Park Service, State of Montana and Park County, as well as the Cities of Livingston and Clyde Park and communities of Wilsall, Emigrant, Pray, Gardiner and Cooke City.

This Fiscal Year Project Plan covers FY 2013 in Phase 1 of the overall Geodetic Control Theme Project, which is part of a 6-year Project in the overall 10-year life cycle.

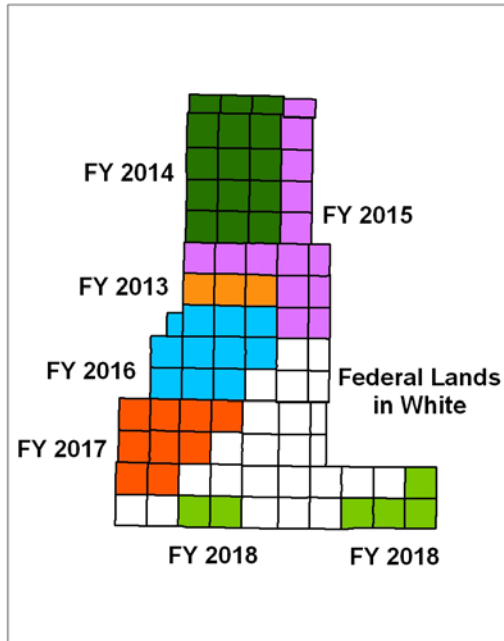


Figure 3.

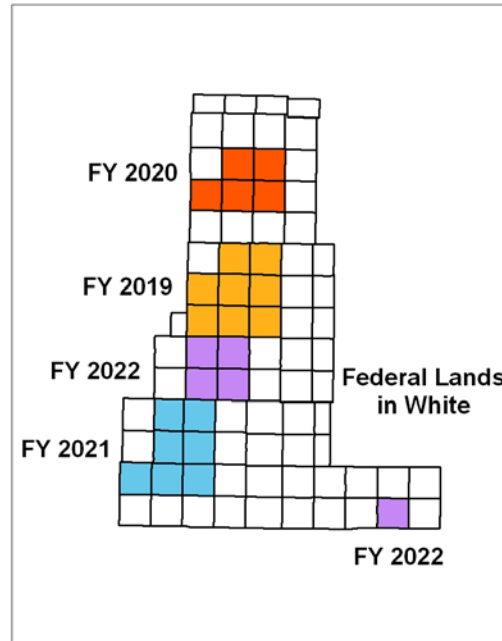


Figure 4.

Prioritize Target Control

■ Devise a 1st, 2nd and 3rd Choice Control Point Plan for the Field

Meetings between representatives from the Base Map Service Center, the BLM, City of Livingston, and Park County will examine existing cadastral shifting in the project area and weigh that against existing control already collected for the GCDB. This pre-planning is intended to select areas that will need additional control to make the most effective use of existing points and provide the necessary adjustment nodes, consequently, pulling the GCDB into better alignment.

Project Maps Created

■ Corner Records Maps and Control Point Plan Maps for Surveyors Printed

Previous survey points and existing BLM GCDB points will be compiled into an acceptable format that can be used to create detailed township map pages. These individual map pages will be reviewed for correctness by the project representatives and used by the potential contractors to provide cost estimates.

Create a Contractor Scope of Work

■ Approve Legal Contract(s) Between Surveyor(s) and Park County

Following the legal process of contracting, Park County will negotiate fees and services with the selected surveying contractor(s) and submit for approval through a County Commission public meeting.

Emphasis will be placed on efficiency and accuracy in the field and collecting the maximum number of points for the budget dollars. A hard cost estimate will be reviewed by the selected contractors and the best price selected with a not to exceed amount specified.

Field Geodetic Control Surveying

■ Conduct the Field Control Point Collection Throughout the Project Area

This will be performed by a Registered Land Surveyor using Geodetic Control Processing with a positional accuracy statement for each point. Field notes and Corner Records re-established where applicable will be submitted, with any necessary corner records recorded with the Clerk and Recorder. Standards and Guidelines for Cadastral Surveying from the BLM will be followed. Control points will be entered into the State Survey and Mapping Control (SUMAC) database template and submitted to the Montana Control Point Database.

Upload of New MSDI Data

■ Submittal of Data to BLM and the Base Map Service Center

Control Surveys will be submitted to BLM for review and acceptance by BLM staff. Field maps will be printed for BLM review and geographic position reference. Refinement of deliverables will be made by Park County, or Park County's Contracted Registered Land Surveyor, per any BLM recommendations. GCDB geodetic control adjustment will be conducted within the timeframe of the BLM and BMSC resulting in readjusted township PLSS data.

Update Dependant Themes

■ Adjustment of Park County Cadastral Theme to the New GCDB

The Park County Cadastral will be adjusted using the new GCDB and PLSS. Additional cadastral readjustment by a parcel editing expert may be necessary, at which time Park County will confer with the BLM and the Cadastral Theme Lead.

■ Adjustment of Park County Administrative Boundaries Theme to the New GCDB

After the Park County Cadastral Theme is adjusted to the new GCDB, Park County will perform the same adjustment to all Park County Administrative Boundaries that are based on the Cadastral Theme. Cadastral Theme updates and Administrative Boundaries updates will be submitted to the BMSC. Modifications to registered data within the Montana GIS Portal will be submitted. Park County Administrative Boundary updates will be sent to the U.S. Census Bureau for future updates to their records.

PROJECT SCHEDULE

Each Fiscal Year Control Survey overlaps calendar years, however, the Fiscal Year in which the first Task begins is considered the Fiscal Year for that Control Survey.

The Timeline for each Fiscal Year Project within Phase I and Phase II, will likely follow the same schedule barring any unforeseen weather situations.

PROJECT MANAGEMENT AND ORGANIZATIONAL CAPABILITY

The mission statement of the Park County and City of Livingston GIS Department reads as follows:

“The goal of the GIS department is to provide City and County officials, departments, local businesses, other agencies, and the public accurate and reliable geographic information through responsive and innovative GIS services. Create and maintain current, consistent and complete geospatial data supporting efficient operations and informed decision making.

Erica Hoffman, GIS/IT Manager, – Mrs. Hoffman will oversee all activities conducted on this project and will provide the direct management of other staff from Park County and City of Livingston. Mrs. Hoffman has 6 years of GIS experience and a BS from Montana State University in Geography. Mrs. Hoffman is Park County and City of Livingston's IT Manager as well and will be in charge of all deliverables to the BLM or the Base Map Service Center.

Julie Brown Sendra, GIS Analyst-GISP – Mrs. Sendra will be responsible for assisting with the control collection planning, coordinating with Surveyors, and assisting with the final deliverables. Mrs. Sendra, has over 30 years of GIS and GPS experience and has assembled the data set of control points collected by the BLM ARRA funded project, the Montana Control Point Database and all recorded corner points that have been collected by the Registered Surveyors in the Park County Clerk and Recorder's office. Julie Sendra has a proven record of implementing projects similar in scope and longevity.

Managed county-wide Pavement Management GIS data acquisition for Ada County, Idaho, which, spread over a 5 year time period, resulted in 2100 miles of acquired data related to major arterials, local roads, and related infrastructure such as bridges and signal systems.

Managed Americans with Disabilities Act grant for the gathering of urban sidewalk locations, condition, slope and handicap accessibility for Ada County, Idaho. Students and volunteers gathered the information using Trimble GPS units.

Managed a Department of Homeland Security Emergency Management Planning Grant (EMPG) for HAZUS studies for the State of Idaho. Performed analysis, managed budget, and produced grant progress reports. Also managed a GIS Mitigation Grant for Critical Infrastructure data acquisition for the State of Idaho. Both of the DHS grants were 18 month performance period reporting, and spanned 7 years of data acquisition and development.

Registered Land Surveyors will be asked to submit an RFQ in order to participate in this project. A selection or selections will be made for those parties qualified to contribute to this project.

BUDGET JUSTIFICATION

Park County and City of Livingston has estimated 10 years for completion of Phase I and Phase II of this project. In-kind contributions consist of staff time and budgeted contract funds for this project. Costs associated with the project are mainly personnel needed to plan, research and review fieldwork, as well as the analytical GIS adjustment of the dependant GIS themes. Current hourly rates for salaries and fringe benefits were adjusted upward by about 4% annually to account for the probable salaries that would be in effect at the time each forecasted project Phase begins. A detailed budget table by Fiscal Year showing the estimated costs for all categories is provided in this section.

Salaries and Wages: Personnel from the Park County and City of Livingston Geographic Information Systems Department will be the only staff required for these project phases.

Fringe Benefits: The amount assigned to fringe benefits is 31.7% of the salaries and wages of County employees. These include health and unemployment insurance, workers compensation, FICA and Medicare and retirement.

Travel: No travel costs are anticipated. Travel costs by BMSC and BLM staff will be considered in-kind.

Equipment: No equipment costs are anticipated. Existing hardware/software will be utilized.

Supplies: Supplies include minor office incidentals and plotting supplies for field Survey plots.

Contracted Services: Professional contract services provided by Registered Land Surveyors will be pay for the Control Surveys. Contracts will be written and administered by Park County based on a submitted Scope of Work with a not to exceed amount for time and materials.

Other: These costs include the Grants Administration fees which are calculated at 5% of the total grant funds. These funds are being provided as matching funds and will help ensure adequate grant reporting for Federal, State and Park County administrative requirements.

FISCAL YEAR 2013 PROJECTED BUDGET SUMMARY – PHASE I-Year I

Total Projected Expended by Park County = \$10,000.00

Total Projected billed to MLIA = \$20,000.00

Total=30,000.00

CATEGORY	PARK CNTY SHARE	MLIA SHARE	OTHER SHARE	TOTAL
1.SALARIES/WAGES	\$2,896.50	\$0	\$0	\$2,896.50
2. FRINGE BENEFITS	\$918.00	\$0	\$0	\$918.00
3. TRAVEL	\$0	\$0	\$0	\$0
4. EQUIPMENT	\$0	\$0	\$0	\$0
5. SUPPLIES	\$150	\$0	\$0	\$ 150.00
6. CONTRACTED	\$5,035.50	\$20,000	\$0	\$25,035.50
7. OTHER	\$1000.00	\$0	\$0	\$1000.00
TOTAL \$	\$10,000	\$20,000	\$0	\$30,000.00

Fiscal Year
2014-Phase1

CATEGORY	PARK CNTY SHARE	MLIA SHARE	OTHER SHARE	TOTAL
1.SALARIES/WAGES	\$3012.00	\$0	\$0	\$3012.00
2. FRINGE	\$933.00	\$0	\$0	\$933.00
BENEFITS				
3. TRAVEL	\$0	\$0	\$0	\$0
4. EQUIPMENT	\$0	\$0	\$0	\$0
5. SUPPLIES	\$150	\$0	\$0	\$150
6. CONTRACTED	\$4,905.00	\$20,000	\$0	\$24,905.00
7. OTHER	\$1000.00	\$0	\$0	\$1000.00
TOTAL \$	\$10,000	\$20,000	\$0	\$30,000.00

Fiscal Year
2015-Phase1

CATEGORY	PARK CNTY SHARE	MLIA SHARE	OTHER SHARE	TOTAL
1.SALARIES/WAGES	\$3,132.00	\$0	\$0	\$3,132.00
2. FRINGE	\$992.00	\$0	\$0	\$992.00
BENEFITS				
3. TRAVEL	\$0	\$0	\$0	\$0
4. EQUIPMENT	\$0	\$0	\$0	\$0
5. SUPPLIES	\$150	\$0	\$0	\$150
6. CONTRACTED	\$4,726.00	\$20,000	\$0	\$24,726.00
7. OTHER	\$1000.00	\$0	\$0	\$1000.00
TOTAL \$	\$10,000	\$20,000	\$0	\$30,000.00

Fiscal Year
2016-Phase1

CATEGORY	PARK CNTY SHARE	MLIA SHARE	OTHER SHARE	TOTAL
1.SALARIES/WAGES	\$3,257.00	\$0	\$0	\$3,257.00
2. FRINGE	\$1,032.00	\$0	\$0	\$1,032.00
BENEFITS				
3. TRAVEL	\$0	\$0	\$0	\$0
4. EQUIPMENT	\$0	\$0	\$0	\$0
5. SUPPLIES	\$150	\$0	\$0	\$150
6. CONTRACTED	\$4,561.00	\$20,000	\$0	\$24,561.00
7. OTHER	\$1000.00	\$0	\$0	\$1000.00
TOTAL \$	\$10,000	\$20,000	\$0	\$30,000.00

Fiscal Year
2017-Phase1

CATEGORY	PARK CNTY SHARE	MLIA SHARE	OTHER SHARE	TOTAL
1.SALARIES/WAGES	\$3,387.00	\$0	\$0	\$3,387.00
2. FRINGE	\$1,073.00	\$0	\$0	\$1,073.00
BENEFITS				
3. TRAVEL	\$0	\$0	\$0	\$0
4. EQUIPMENT	\$0	\$0	\$0	\$0
5. SUPPLIES	\$150.00	\$0	\$0	\$150
6. CONTRACTED	\$4,390.00	\$20,000	\$0	\$24,390.00
7. OTHER	\$1000.00	\$0	\$0	\$1000.00
TOTAL \$	\$10,000	\$20,000	\$0	\$30,000.00

Fiscal Year
2018-Phase1

CATEGORY	PARK CNTY SHARE	MLIA SHARE	OTHER SHARE	TOTAL
1.SALARIES/WAGES	\$3,522.00	\$0	\$0	\$3,522.00
2. FRINGE	\$1,116.00	\$0	\$0	\$1,116.00
BENEFITS				
3. TRAVEL	\$0	\$0	\$0	\$0
4. EQUIPMENT	\$0	\$0	\$0	\$0
5. SUPPLIES	\$150	\$0	\$0	\$ 150.00
6. CONTRACTED	\$4,212.00	\$20,000	\$0	\$ 24,212.00
7. OTHER	\$1000.00	\$0	\$0	\$1000.00
TOTAL \$	\$10,000	\$20,000	\$0	\$30,000

Fiscal Year 2019-Phase2

CATEGORY	PARK CNTY SHARE	MLIA SHARE	OTHER SHARE	TOTAL
1.SALARIES/WAGES	\$3,662.00	\$0	\$0	\$3,662.00
2. FRINGE	\$1,160.00	\$0	\$0	\$1,160.00
BENEFITS				
3. TRAVEL	\$0	\$0	\$0	\$0
4. EQUIPMENT	\$0	\$0	\$0	\$0
5. SUPPLIES	\$150.00	\$0	\$0	\$ 150.00
6. CONTRACTED	\$4,028.00	\$20,000	\$0	\$24,028.00
7. OTHER	\$1000.00	\$0	\$0	\$1000.00
TOTAL \$	\$10,000	\$20,000	\$0	\$30,000

Fiscal Year 2020-Phase2

CATEGORY	PARK CNTY SHARE	MLIA SHARE	OTHER SHARE	TOTAL
1.SALARIES/WAGES	\$3,808.00	\$0	\$0	\$3,808.00
2. FRINGE	\$1,207.00	\$0	\$0	\$1,207.00
BENEFITS				
3. TRAVEL	\$0	\$0	\$0	\$0
4. EQUIPMENT	\$0	\$0	\$0	\$0
5. SUPPLIES	\$150	\$0	\$0	\$ 150.00
6. CONTRACTED	\$3,835.00	\$20,000	\$0	\$23,835.00
7. OTHER	\$1000.00	\$0	\$0	\$1000.00
TOTAL \$	\$10,000	\$20,000	\$0	\$30,000

Fiscal Year 2021-Phase2

CATEGORY	PARK CNTY SHARE	MLIA SHARE	OTHER SHARE	TOTAL
1.SALARIES/WAGES	\$3,960.00	\$0	\$0	\$3,960.00
2. FRINGE	\$1,255.00	\$0	\$0	\$1,255.00
BENEFITS				
3. TRAVEL	\$0	\$0	\$0	\$0
4. EQUIPMENT	\$0	\$0	\$0	\$0
5. SUPPLIES	\$150	\$0	\$0	\$ 150.00
6. CONTRACTED	\$3,635.00	\$20,000	\$0	\$23,635.00
7. OTHER	\$1000.00	\$0	\$0	\$1000.00
TOTAL \$	\$10,000	\$20,000	\$0	\$30,000

Fiscal Year 2022-Phase2

CATEGORY	PARK CNTY SHARE	MLIA SHARE	OTHER SHARE	TOTAL
1.SALARIES/WAGES	\$4,118.00	\$0	\$0	\$4,118.00
2. FRINGE	\$1,305.00	\$0	\$0	\$1,305.00
BENEFITS				
3. TRAVEL	\$0	\$0	\$0	\$0
4. EQUIPMENT	\$0	\$0	\$0	\$0
5. SUPPLIES	\$150	\$0	\$0	\$ 150.00
6. CONTRACTED	\$3,527.00	\$20,000	\$0	\$23,527.00
7. OTHER	\$1000.00	\$0	\$0	\$1000.00
TOTAL \$	\$10,000	\$20,000	\$0	\$30,000

Fiscal Year 2023-Phase2

CATEGORY	PARK CNTY SHARE	MLIA SHARE	OTHER SHARE	TOTAL
1.SALARIES/WAGES	\$4,282.00	\$0	\$0	\$4,282.00
2. FRINGE	\$1,357.00	\$0	\$0	\$1,357.00
BENEFITS				
3. TRAVEL	\$0	\$0	\$0	\$0
4. EQUIPMENT	\$0	\$0	\$0	\$0
5. SUPPLIES	\$150	\$0	\$0	\$ 150.00
6. CONTRACTED	\$3,211.00	\$20,000	\$0	\$23,211.00
7. OTHER	\$1000.00	\$0	\$0	\$1000.00
TOTAL \$	\$10,000	\$20,000	\$0	\$30,000

Future MLIA funding is not anticipated beyond Fiscal Year 2023. The amount of effort put forth in this project for the full 10 years by the local surveying community, all the participating partners and the local GIS dept. is expected to achieve the desired accuracy in the parcel data for Park County and the City of Livingston.

STATEMENTS OF SUPPORT

AUTHORIZED SIGNATURE

I hereby certify that the information and all statements in this application are true, complete and accurate to the best of my knowledge and that the project or activity complies with all applicable state, local and federal laws and regulations.

I further certify that this project will comply with applicable statutory and regulatory standards.

I further certify that I am (we are) authorized to enter into a binding agreement with the Montana Department of Administration to obtain a grant if this application receives approval.

_____ Date _____

Signature and Title of Authorized Representative(s)
of Public Entity Applicant