



# 2003 Montana Public Library Annual Report of Statistics

July 2002-- June 2003



# Montana

## Public Library Annual Report of Statistics July 2002 -- June 2003

### Cover Photo Credits:

Roosevelt County Library – Photo by Al Randall  
MSU Engineering Students Study – Photo by Heidi Sherick of MSU  
Bicentennial Library of Colstrip – Photo by Al Randall

**ISSN: 1066-4904**

**Published by:**



1515 East Sixth Avenue -- PO Box 201800

Helena, Montana 59620-1800

406-444-3115 -- Fax: 406-444-0266

<http://msl.state.mt.us>

This publication is available in PDF at <http://msl.state.mt.us/ldd/Statistics/Stats.html>

E-Mail: [msl@state.mt.us](mailto:msl@state.mt.us)

# Table of Contents

<b>Letter from the Montana State Librarian, Karen Strege</b>	i
<b>Montana Map with Public and Branch Libraries by Type</b>	ii
<b>Statewide Library Performance Indicators</b>	
Core Performance Measures	1
General and Service Area Population Tables	1
Interpreting Measures	1
Visits Per Capita	2
Circulation Per Capita	3
Collection Turnover Rate	4
Income Per Capita	5
<b>General and Service Area Population Tables</b>	
General Information	6
Staff Information	8
Salaries	10
Statewide Median Yearly Salaries	13
Library Income	14
Library Income by Service Area Population	18
Expenditures	22
Expenditures by Service Area Population	26
Collection	30
Collection by Service Area Population	32
Service Hours	36
Service Hours by Service Area Population	38
Circulation	40
Circulation by Service Area Population	42
Programs	44
Interlibrary Loans	46
Interlibrary Loans by Service Area Population	48
Library Facility Adequacy	50
Automation	52
Definitions, Abbreviations & Acronyms	57
Contact Information	57



This report contains statistical information for all 79 legally established public libraries in Montana. The State Library cooperates with the Federal-State Cooperative System (FSCS) program, which develops and compiles national public library statistics for the United States. MSL provides Montana information to the FSCS so that policy-makers, funders, trustees, and librarians can identify trends in the country's libraries services.

I hope that Montana public librarians, trustees, and friends find this report of use to improve the quality and effectiveness of public library service. This information can be useful both in evaluating past efforts and in many planning activities. One way to evaluate your library's performance is to compare measures from year to year. Another way to evaluate is to compare your library's performance with other similar libraries.

The context of the statistics is important for both types of use. If your library's circulation has decreased significantly from year to year, you might easily find the answer if you have experienced budget reductions. However, you may not find an easy answer and you must investigate these changes to remedy problems or continue beneficial activities. Such analysis should use statistics from as many years as possible to spot long-term trends.

If you use the measures to compare your library to other libraries, you should use similar libraries so that the comparisons are meaningful. This report is designed to help you do so by dividing libraries into groups that serve similar populations. However, even within these population groups, wide variations exist between individual libraries. Before using the statistics to make comparisons, check that similarities exist in other factors, such as income, hours open, collections, or mission, goals, and objectives.

The information in the report is presented in two main sections -- performance measures, and general tables. In the first section, MSL chose six measures to highlight. This section provides summaries, general descriptions, and identifies factors that may affect these measures.

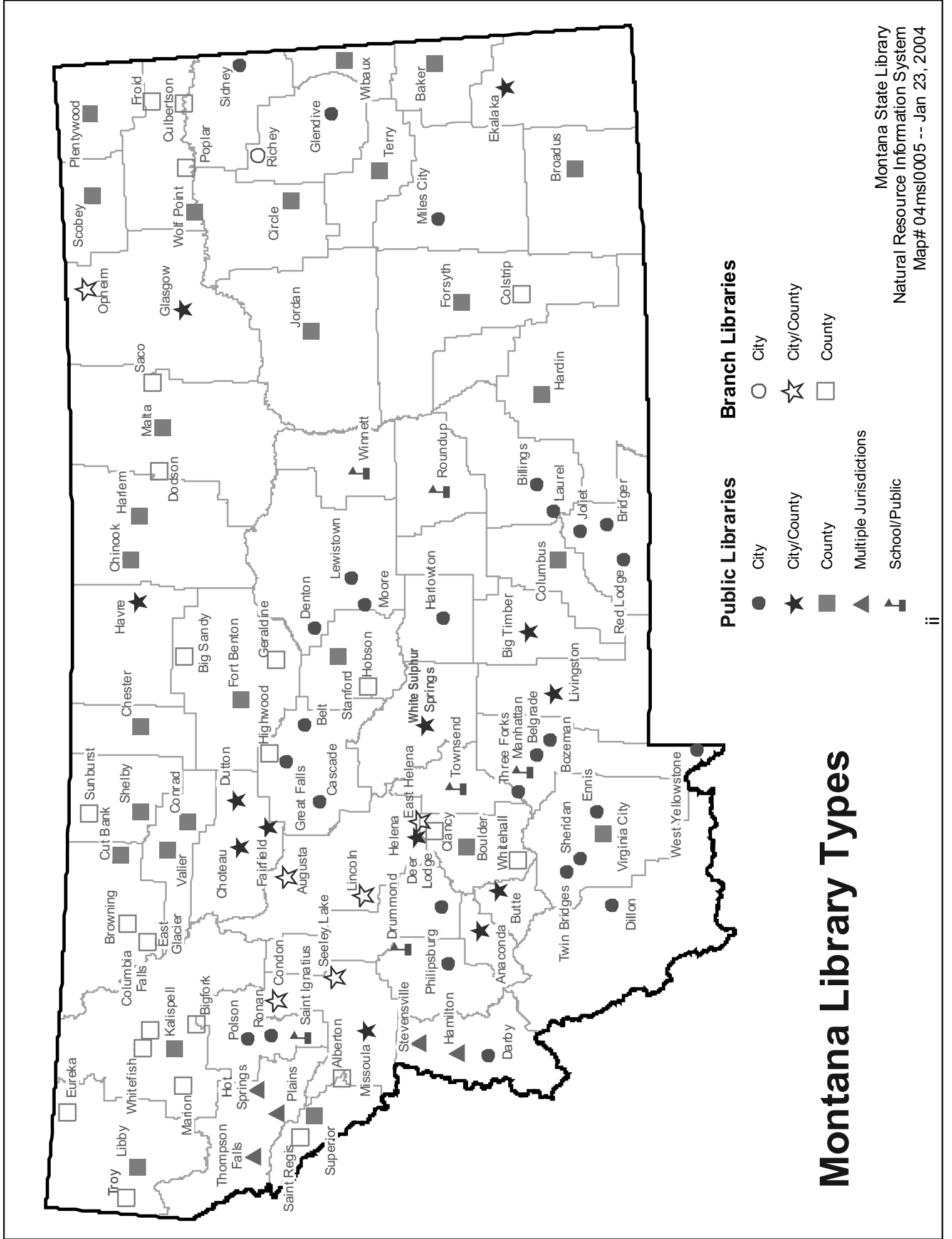
The information in the second section, general tables, is presented in two ways. The first is by county name and then by city. The same information is provided by grouping libraries by population, allowing for easy comparisons of similar libraries.

We wish you well in your efforts to continually improve library services in Montana. If we can provide assistance, please do not hesitate to contact us.

Sincerely,

A handwritten signature in cursive script that reads "Karen Strege".

Karen Strege  
Montana State Librarian



# Montana Library Types

- |                          |                         |
|--------------------------|-------------------------|
| <b>Public Libraries</b>  | <b>Branch Libraries</b> |
| ● City                   | ○ City                  |
| ★ City/County            | ☆ City/County           |
| ■ County                 | □ County                |
| ▲ Multiple Jurisdictions |                         |
| ▾ School/Public          |                         |

# Statewide Library Performance Indicators

Core Performance Measures .....	1
General and Service Area Population Tables.....	1
Interpreting Measures .....	1
Visits Per Capita.....	2
Circulation Per Capita .....	3
Collection Turnover Rate.....	4
Income Per Capita .....	5

---

# Statewide Library Performance Indicators

---

## Core Performance Measures

Because of their potential applications to library services planning and because of their usefulness as general indicators of library service on a statewide basis, six measures have been designated as core performance measures:

- Visits per capita
- Expenditures per capita
- Holdings per capita
- Turnover rate
- Circulation per capita
- Income per capita

## General and Service Area Population Tables

The following pages provide summary data for these performance measures on a statewide basis. The population of the library service area is also provided. For each measure, the text gives a general description and identifies some of the factors affecting the measure.

In this publication, the general tables are categorized by the county in which the public library resides and report basic library information on a library-by-library basis.

## Interpreting Measures

Although community and individual library circumstances vary, the core measures and general tables can assist Montana's public librarians and trustees as they evaluate library activities and plan improvements in library services. We offer the following suggestions:

- Analyze the library's statistics in terms of library mission, goals, and objectives. Libraries, even in communities of similar size, have varying funding patterns and community expectations for service. A reference and resource library will show a different pattern of statistics than a popular materials library.
- Realize that online databases and the Internet have changed library use patterns. Although statewide and national data have not yet been collected on this service, individual libraries should be tracking this use.
- Remember that performance measure scores are not absolutes. Performance measures are not necessarily precise. Most measures are calculated in percentages and ratios. Do not be too concerned about "decimal points."
- Use performance measures in context. There are not "right" or "wrong" scores for performance measures. One performance measure alone cannot tell a complete story. Performance measure scores should be interpreted in context with each other and with the library's overall service program and budget.
- Exercise patience in working toward improving performance measure scores. Changing a library's score on a performance measure is usually not accomplished overnight. Such a change usually requires work over an extended period. Improving a library's score on selected performance measures has to be a cooperative effort among the library director, library trustees, and the local community.

---

# Visits Per Capita - SFY 2003

---

Visits Per Capita relates the number of people visiting the library to the population served. It can be thought of as representing the average number of times during a year that a member of the community uses the library. Visits Per Capita is calculated by dividing the library total attendance by the service area population.

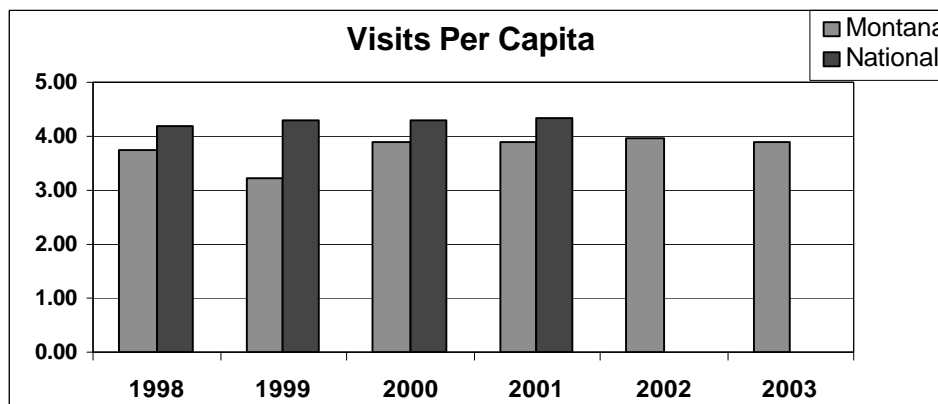
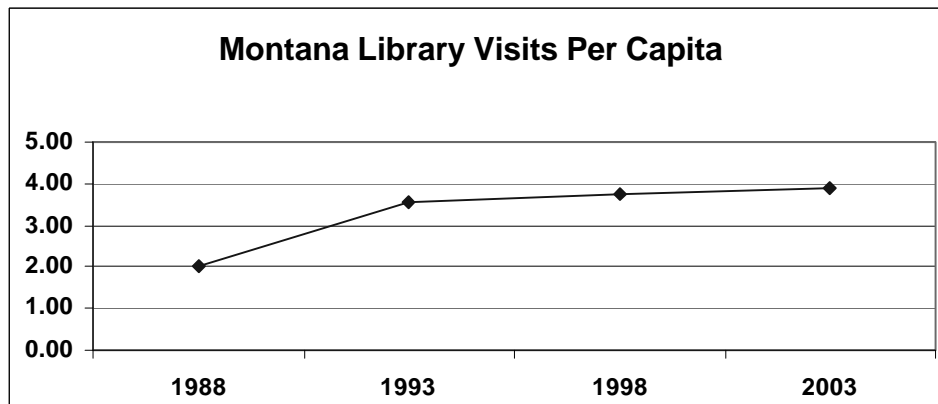
## Factors that Influence the Measure

- Fluctuation in the size of the service area population
- Library hours of service
- Physical arrangement and convenience of library facilities
- Community awareness of library service
- Special programs--prizes, reading programs, etc.
- Library circulation or acquisitions policies, loan period, fines
- Age, condition, and size of the library's collection

## Interpretation and Use

Visits Per Capita is one measure of the community's use of the library, whether for materials, programs, or meetings. A high score on the measure indicates heavy use of the facility. A low score may indicate several things. For example:

1. The hours the library is open does not fit the needs of the community;
2. The library's collection and/or programming does not meet the community's interests or needs;
3. Residents may be unaware of what the library has to offer;
4. The facility may be uninviting.





---

# Circulation Per Capita - SFY 2003

---

Circulation Per Capita relates the number of items a library circulates to the population served. It can be thought of as representing the average number of items checked out in a year by a member of the community. Circulation Per Capita is calculated by dividing the library's total annual circulation by the service area population.

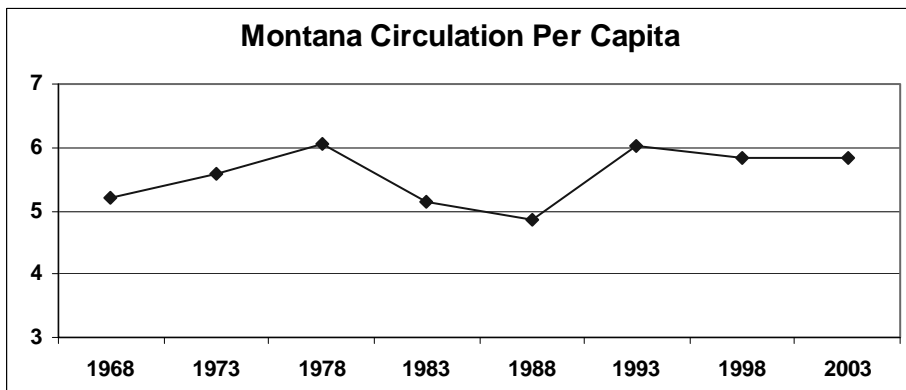
## *Factors that Influence the Measure*

- Fluctuation in the size of the service area population
- Increase or decrease in the number of items circulated annually
- Library circulation or acquisitions policies, loan period, fines
- Special programs--prizes, reading programs, etc.
- Community awareness of library service
- Library hours of service
- Number of library users
- Age, condition, and size of the library's collection
- Physical arrangement and convenience of library facilities

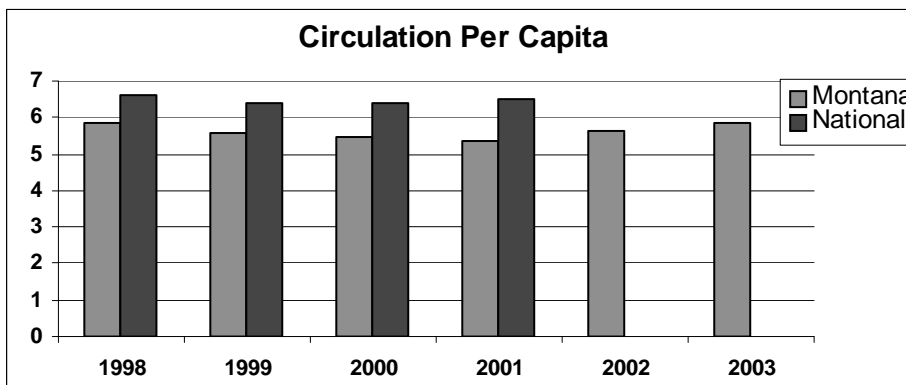
## *Interpretation and Use*

Circulation Per Capita is another measure of the community's use of the library. A high score on this measure indicates heavy use of the library's circulating materials. A low score may indicate several things. For example:

1. The library's collection may not meet community needs or interests;
2. Community residents may be unaware of the library's resources;
3. The library may have an extensive collection of non-circulating materials.



**Note: Evaluation of the drop in 1988 indicated that it was largely due to some libraries not reporting their circulation.**



---

# Collection Turnover Rate - SFY 2003

---

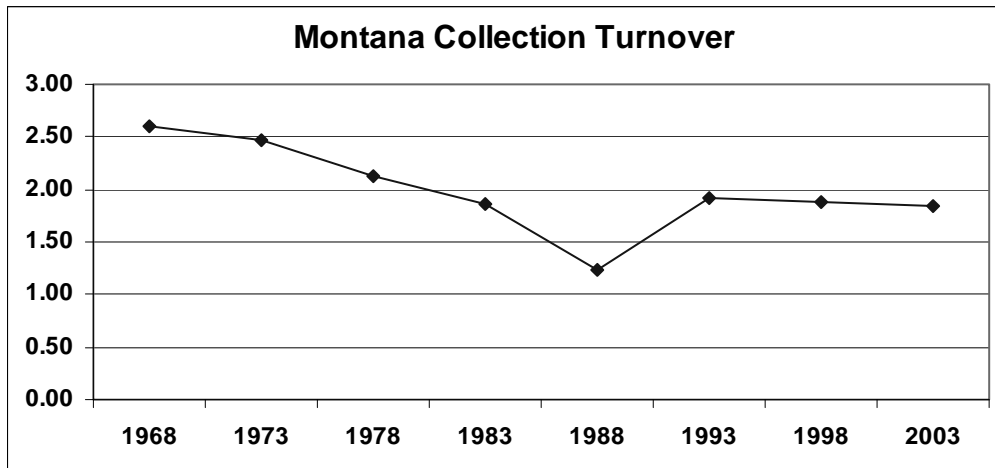
Turnover Rate measures the activity of a library's collection, indicating the number of times each unit of library material would have circulated during the year if circulation had been spread evenly throughout the collection. It is calculated by dividing the library's total annual circulation by total library holdings.

## *Factors that Influence the Measure*

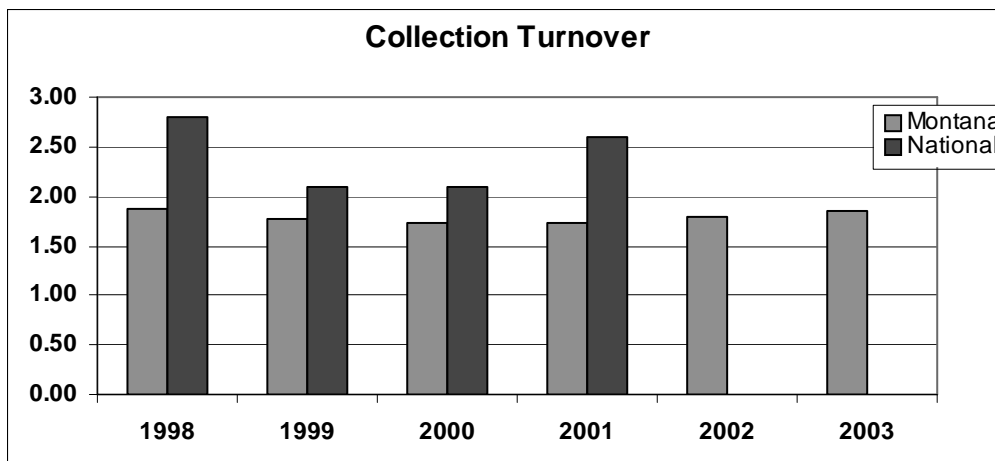
- Increase or decrease in the annual circulation
- Circulation policies--loan period, fines
- Library acquisitions and collection development policies
- Special programs--prizes, reading program, etc.
- Community awareness of library service
- Library hours of service
- Number of library users
- Age, condition, and size of the library's collection
- Physical arrangement and convenience of library facilities

## *Interpretation and Use*

This measure related strongly to the goals each library has set for meeting the service needs of its community. A library which emphasizes the circulation of popular reading materials will have a higher Turnover Rate than a library which emphasizes subject depth in its collection and has an extensive reference collection.



Note: Evaluation of the drop in 1988 indicated that it was largely due to some libraries not reporting their circulation.



---

# Income Per Capita - SFY 2003

---

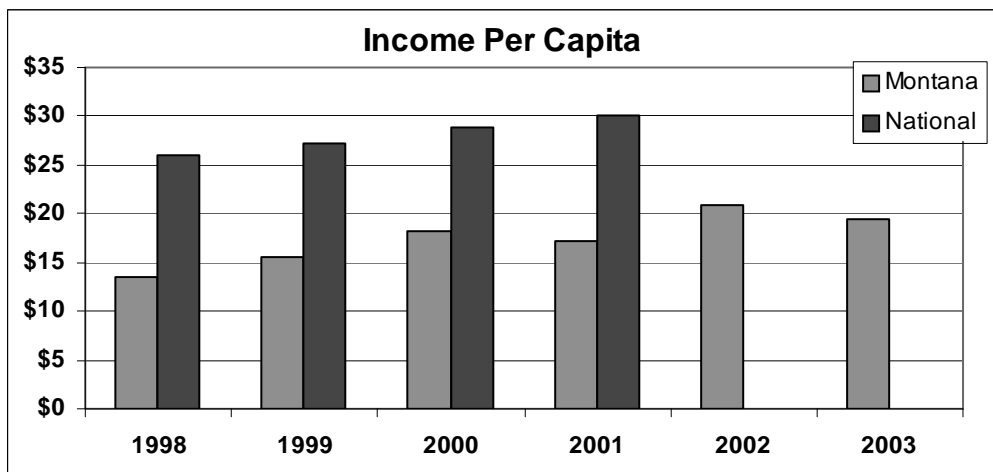
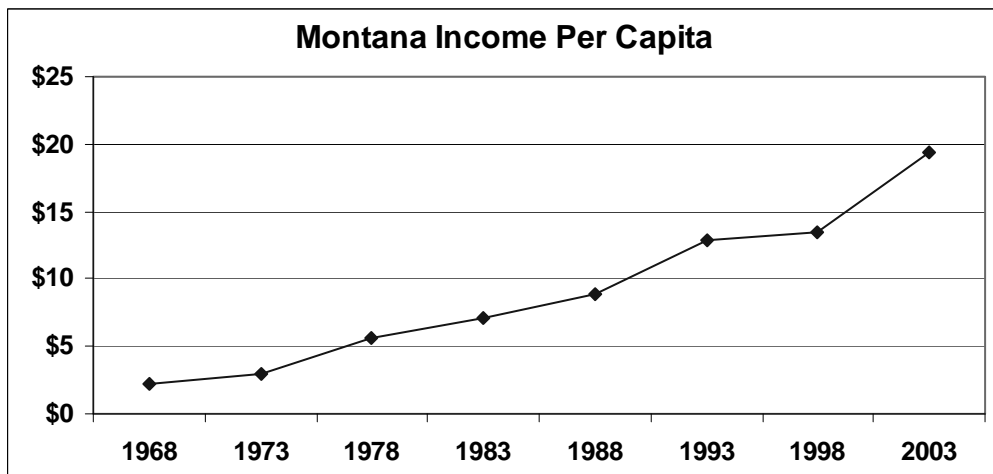
Income Per Capita relates library income to the population of the service area served. It is obtained by dividing the library's total income by the service area population. Figures shown here are based on each library's total income, which includes city, district, county, state, federal, and other income.

## *Factors that Influence the Measure*

- Overall local economic conditions
- Changing tax base
- Demands on local government for all public services in general and library service specifically
- Community perception of the importance and value of library service
- Political climate
- Changes in the availability of state and federal grants

## *Interpretation and Use*

Knowing the extent to which a city, district or county government is providing the financial support possible for its library is valuable information for public librarians and their boards.



# General and Service Area Population Tables

General Information .....	6
Staff Information.....	8
Salaries .....	10
Statewide Median Yearly Salaries.....	13
Library Income .....	14
Library Income by Service Area Population.....	18
Expenditures .....	22
Expenditures by Services Area Population.....	26
Collection .....	30
Collection by Service Area Population .....	32
Service Hours .....	36
Service Hours by Service Area Population.....	38
Circulation.....	40
Circulation by Service Area Population .....	42
Programs .....	44
Interlibrary Loans .....	46
Interlibrary Loans by Service Area Population.....	48
Library Facility Adequacy .....	50
Automation.....	52

# General Information - SFY 2003

County	Library Name	Registered Borrowers	Percent Registered	Branches	Book-mobiles
Beaverhead	Dillon Public Library	12,830	139.43%		
Big Horn	Big Horn County Public Library	2,317	18.29%		1
Blaine	Blaine County Library	1,114	25.91%		
	Harlem Public Library	NA	NA		
Broadwater	Broadwater School and Community Library	NA	NA		
Carbon	Bridger Public Library	1,153	51.04%		
	Red Lodge Carnegie Library	3,100	60.99%		
Carter	Ekalaka Public Library	303	22.28%		
Cascade	Belt Public Library	1,000	65.70%		
	Great Falls Public Library	31,601	40.97%		1
	Wedsworth Memorial Library	NA	NA		
Chouteau	Chouteau County Library	4,085	68.43%	3	
Custer	Miles City Public Library	4,609	39.41%		
Daniels	Daniels County Library	1,570	77.84%		
Dawson	Glendive Public Library	3,368	37.18%	1	
Deer Lodge	Hearst Free Library	3,932	41.75%		
Fallon	Fallon County Library	2,393	84.35%		
Fergus	Denton Public Library	301	100.00%		
	Lewistown Public Library	4,168	36.54%		
	Moore Public Library	84	45.16%		
Flathead	Flathead County Library	37,642	50.55%	4	
Gallatin	Belgrade Community Library	4,356	42.41%		
	Bozeman Public Library	21,473	44.92%		
	Manhattan Community Library	1,826	56.81%		
	Three Forks Community Library	384	10.83%		
	West Yellowstone Public Library	892	29.78%		
Garfield	Garfield County Library	500	39.09%		
Glacier	Glacier County Library	4,600	34.72%	2	
Granite	Drummond School Community Library	453	40.56%		
	Philipsburg Public Library	675	39.40%		
Hill	Havre-Hill County Library	8,516	51.08%		
Jefferson	Boulder Community Library	1,807	17.98%	1	
Judith Basin	Judith Basin County Free Library	808	34.69%	1	
Lake	Polson City Library	7,200	61.07%		
	Ronan City Library	2,985	34.06%		
	St Ignatius School-Community Library	861	14.46%		
Lewis and Clark	Lewis and Clark Library	25,175	45.18%	3	
Liberty	Liberty County Library	1,384	64.13%		
Lincoln	Lincoln County Public Library	9,758	51.80%	2	
Madison	Madison Valley Public Library	1,854	164.22%		

# General Information - SFY 2003

County	Library Name	Registered Borrowers	Percent Registered	Branches	Book-mobiles
Madison	Sheridan Public Library	1,415	149.26%		
	Thompson-Hickman County Library	1,956	47.89%		
	Twin Bridges Public Library	695	100.87%		
McCone	George McCone Memorial County Library	783	39.61%		
Meagher	Meagher County/City Library	2,045	105.85%		
Mineral	Mineral County Public Library	1,981	51.00%	2	
Missoula	Missoula Public Library	60,336	62.98%	2	
Musselshell	Roundup Community Library	1,813	40.32%		
Park	Livingston-Park County Public Library	10,723	68.33%		
Petroleum	Petroleum County School-Community Library	493	100.00%		
Phillips	Phillips County Library	2,061	44.79%	2	
Pondera	Conrad Public Library	3,303	73.43%		
	Valier Public Library	636	33.02%		
Powder River	Henry A Malley Memorial Library	1,088	58.56%		
Powell	William K. Kohrs Memorial Library	NA	NA		
Prairie	Prairie County Library	723	60.30%		
Ravalli	Bitterroot Public Library	5,292	22.19%		
	Darby Community Public Library	771	19.73%		
	North Valley Public Library	15,928	191.47%		
Richland	Sidney Public Library	4,684	48.45%		
Roosevelt	Roosevelt County Library	2,785	26.22%	3	
Rosebud	Rosebud County Library	6,356	67.74%	1	
Sanders	Plains Public Library District	2,476	65.02%		
	Preston Town County Library	958	56.65%		
	Thompson Falls Public Library	1,159	24.51%		
Sheridan	Sheridan County Library	2,117	51.57%		
Silver Bow	Butte-Silver Bow Public Library	14,391	41.59%		
Stillwater	Stillwater County Library	4,078	49.76%		
Sweet Grass	Carnegie Public Library	1,200	33.25%		
Teton	Choteau Public Library	1,304	37.86%		
	Dutton Public Library	140	9.99%		
	Fairfield Public Library	502	31.39%		
Toole	Toole County Library	2,243	42.59%	1	
Valley	Glasgow City-County Library	3,657	47.65%	1	
Wheatland	Harlowton Public Library	921	40.59%		
Wibaux	Wibaux Public Library	566	53.00%		
Yellowstone	Laurel Public Library	3,300	52.76%		
	Parmly Billings Library	50,085	40.69%		2
Totals:		426,041	50.95%	29	4

NA = Data not available because the library has not purged its files in the last three years.

Percent Registered may be greater than 100% because some libraries allow people not in their service area to register.

# Staff Information - SFY 2003

County	Library Name	Director has MLS	Total FTE w/MLS	Director FTE	Librarian FTE	Other Staff	Total Staff	Service Area Pop
Beaverhead	Dillon Public Library		0.00	0.65	1.05	0.70	1.75	9,202
Big Horn	Big Horn County Public Library	Yes	1.00	1.00	4.00	1.90	5.90	12,671
Blaine	Blaine County Library		0.00	0.78	1.55	0.10	1.65	4,299
	Harlem Public Library		0.00	0.63	1.13	0.00	1.13	2,710
Broadwater	Broadwater School and Community Library		0.00	1.00	3.00	0.00	3.00	4,385
Carbon	Bridger Public Library		0.00	0.40	0.40	0.00	0.40	2,259
	Red Lodge Carnegie Library		0.00	1.00	1.00	0.48	1.48	5,083
Carter	Ekalaka Public Library		0.00	0.53	0.53	0.00	0.53	1,360
Cascade	Belt Public Library		0.00	1.00	1.00	0.00	1.00	1,522
	Great Falls Public Library	Yes	4.60	1.00	7.60	13.80	21.40	77,128
	Wedsworth Memorial Library		0.00	0.58	1.08	0.00	1.08	1,708
Chouteau	Chouteau County Library		0.00	1.00	4.08	0.60	4.68	5,970
Custer	Miles City Public Library	Yes	1.00	1.00	3.00	2.00	5.00	11,696
Daniels	Daniels County Library		0.00	0.80	1.68	0.00	1.68	2,017
Dawson	Glendive Public Library		0.00	1.00	2.18	1.40	3.58	9,059
Deer Lodge	Hearst Free Library		0.00	1.00	2.73	1.40	4.13	9,417
Fallon	Fallon County Library		0.00	1.00	1.00	2.00	3.00	2,837
Fergus	Denton Public Library		0.00	0.95	0.95	0.00	0.95	301
	Lewistown Public Library		0.00	1.00	4.50	1.00	5.50	11,406
	Moore Public Library		0.00	0.38	0.38	0.00	0.38	186
Flathead	Flathead County Library	Yes	2.50	1.00	8.50	18.35	26.85	74,471
Gallatin	Belgrade Community Library		0.00	1.00	1.00	2.80	3.80	10,272
	Bozeman Public Library	Yes	7.00	1.00	8.75	10.91	19.66	47,805
	Manhattan Community Library		0.00	1.00	1.88	0.90	2.78	3,214
	Three Forks Community Library		0.00	1.00	1.00	0.53	1.53	3,546
	West Yellowstone Public Library		0.00	1.00	2.00	0.00	2.00	2,995
Garfield	Garfield County Library		0.00	0.50	0.70	0.00	0.70	1,279
Glacier	Glacier County Library	Yes	0.93	0.93	3.08	0.18	3.25	13,247
Granite	Drummond School Community Library		0.00	0.25	0.25	0.00	0.25	1,117
	Philipsburg Public Library		0.00	0.38	0.40	0.00	0.40	1,713
Hill	Havre-Hill County Library		0.00	1.00	5.00	0.00	5.00	16,673
Jefferson	Boulder Community Library	Yes	1.00	1.00	2.00	1.00	3.00	10,049
Judith Basin	Judith Basin County Free Library		0.00	1.00	1.63	0.15	1.78	2,329
Lake	Polson City Library		0.00	1.00	3.20	1.78	4.98	11,789
	Ronan City Library		0.00	0.95	1.70	0.45	2.15	8,765
	St Ignatius School-Community Library		0.00	0.93	1.43	0.93	2.35	5,953
Lewis and Clark	Lewis and Clark Library		4.00	1.00	9.28	18.00	27.28	55,716
Liberty	Liberty County Library		0.00	1.00	1.53	0.25	1.78	2,158
Lincoln	Lincoln County Public Library		0.00	1.00	6.90	1.33	8.23	18,837
Madison	Madison Valley Public Library		0.00	0.90	1.40	0.00	1.40	1,129

# Staff Information - SFY 2003

County	Library Name	Director has MLS	Total FTE w/MLS	Director FTE	Librarian FTE	Other Staff	Total Staff	Service Area Pop
Madison	Sheridan Public Library		0.00	0.50	0.50	0.05	0.55	948
	Thompson-Hickman County Library		0.00	0.75	0.75	0.15	0.90	4,084
	Twin Bridges Public Library		0.00	0.50	0.50	1.05	1.55	689
McCone	George McCone Memorial County Library		0.00	0.25	0.25	0.38	0.63	1,977
Meagher	Meagher County/City Library		0.00	1.00	1.00	0.40	1.40	1,932
Mineral	Mineral County Public Library		0.00	0.63	0.95	0.78	1.73	3,884
Missoula	Missoula Public Library		3.00	1.00	9.30	17.85	27.15	95,802
Musselshell	Roundup Community Library	Yes	1.00	1.00	1.73	0.00	1.73	4,497
Park	Livingston-Park County Public Library	Yes	2.00	1.00	5.45	1.10	6.55	15,694
Petroleum	Petroleum County School-Community Libr		0.00	0.23	0.23	0.45	0.68	493
Phillips	Phillips County Library		0.00	1.00	2.20	0.00	2.20	4,601
Pondera	Conrad Public Library		0.00	1.00	2.40	0.60	3.00	4,498
	Valier Public Library		0.00	0.63	0.63	0.35	0.98	1,926
Powder River	Henry A Malley Memorial Library		0.00	0.55	1.10	0.00	1.10	1,858
Powell	William K. Kohrs Memorial Library		0.00	1.00	1.65	0.00	1.65	7,180
Prairie	Prairie County Library		0.00	0.63	0.63	0.08	0.70	1,199
Ravalli	Bitterroot Public Library		0.00	1.00	2.00	2.95	4.95	23,844
	Darby Community Public Library		0.00	0.45	0.45	0.00	0.45	3,907
	North Valley Public Library		0.00	1.00	2.00	1.00	3.00	8,319
Richland	Sidney Public Library		1.00	1.00	3.00	0.80	3.80	9,667
Roosevelt	Roosevelt County Library		0.00	1.00	5.30	0.00	5.30	10,620
Rosebud	Rosebud County Library		0.00	1.00	3.20	1.18	4.38	9,383
Sanders	Plains Public Library District		0.00	0.75	0.75	0.78	1.53	3,808
	Preston Town County Library		0.00	0.50	0.50	0.50	1.00	1,691
	Thompson Falls Public Library		0.00	0.80	0.80	1.08	1.88	4,728
Sheridan	Sheridan County Library		0.00	1.00	1.70	0.55	2.25	4,105
Silver Bow	Butte-Silver Bow Public Library		0.00	1.00	3.00	9.43	12.43	34,606
Stillwater	Stillwater County Library		0.00	1.00	2.00	0.00	2.00	8,195
Sweet Grass	Carnegie Public Library		0.00	0.83	1.65	0.00	1.65	3,609
Teton	Choteau Public Library		0.00	0.50	1.23	0.15	1.38	3,444
	Dutton Public Library		0.00	0.45	0.88	0.00	0.88	1,401
	Fairfield Public Library		0.00	0.48	0.48	0.20	0.68	1,599
Toole	Toole County Library		0.00	0.75	1.03	0.10	1.13	5,267
Valley	Glasgow City-County Library		0.00	1.00	3.63	0.00	3.63	7,675
Wheatland	Harlowton Public Library		0.00	0.88	0.88	0.90	1.78	2,269
Wibaux	Wibaux Public Library		0.00	0.65	1.25	0.00	1.25	1,068
Yellowstone	Laurel Public Library		0.00	1.00	1.88	0.95	2.83	6,255
	Parmly Billings Library	Yes	7.00	1.00	12.00	14.88	26.88	123,097
<b>Totals:</b>			<b>36.03</b>	<b>64.18</b>	<b>183.23</b>	<b>141.56</b>	<b>324.79</b>	<b>898,092</b>

Note: Joliet Community Library did not report and does not appear in report, reducing statewide service population from 900,302.



# Salaries

Population Category	Position	High	Low
1,199 and Under			
	Library Director	\$22,090	\$10,712
	Assistant Director	\$12,979	\$12,979
	Branch Librarian	\$38,584	\$12,189
	Assistant Librarian	\$11,128	\$11,128
	Assistant Librarian	\$20,405	\$20,405
	Library Aide	\$12,397	\$12,355
	Library Aide	\$15,142	\$11,253
	Library Assistant	\$11,544	\$10,712
	Library Clerk	\$17,534	\$13,936
	Library Staff Member	\$20,800	\$13,520
	Library Technician	\$22,922	\$22,922
	Photograph Archivist	\$13,520	\$13,520
1,200-1,999			
	Library Director	\$24,752	\$10,982
	Assistant Librarian	\$19,802	\$13,333
	Library Aide	\$14,144	\$12,854
	Library Clerk	\$13,520	\$11,211
	Library Staff Member	\$18,720	\$13,000
	Substitute Librarian	\$13,083	\$13,000
2,000-3,499			
	Library Director	\$39,520	\$15,600
	Assistant Librarian	\$20,800	\$12,979
	Circulation Librarian	\$13,104	\$13,104
	Library Aide	\$20,280	\$10,712
	Library Associate	\$14,664	\$12,480
	Library Clerk	\$16,640	\$14,560
	Technical Services Director	\$12,480	\$12,480
	Youth Services Librarian	\$15,496	\$15,496
3,500-4,999			
	Library Director	\$64,938	\$15,038
	Community Librarian	\$14,560	\$14,560
	Administrative Assistant	\$17,555	\$17,555
	Assistant Librarian	\$24,606	\$11,565
	Library Aide	\$17,680	\$13,312
	Library Clerk	\$18,179	\$13,395
	Library Staff Member	\$15,912	\$11,856
	Youth Services Librarian	\$13,520	\$13,520
5,000-9,999			
	Library Director	\$31,200	\$20,717
	Assistant Director	\$21,195	\$16,931
	Community Librarian	\$16,640	\$16,640
	Assistant Librarian	\$22,173	\$14,560
	Cataloging Technician	\$17,680	\$14,144
	Circulation Librarian	\$19,760	\$16,266

# Salaries

## Population

Category	Position	High	Low
	Interlibrary Loan Librarian	\$14,560	\$14,560
	Library Aide	\$16,952	\$11,003
	Library Assistant	\$13,520	\$11,960
	Library Clerk	\$19,011	\$14,144
	Library Staff Member	\$13,395	\$13,395
	Library Technician	\$17,680	\$17,680
	Substitute Librarian	\$14,144	\$14,144
	Technical Services and Systems Supervisor	\$20,800	\$20,800
	Youth Services Librarian	\$22,173	\$22,173
10,000-24,999			
	Library Director	\$40,019	\$26,707
	Adult Basic Education Teacher	\$20,280	\$20,280
	Archivist	\$22,506	\$22,506
	Assistant Librarian	\$20,696	\$18,200
	Bookmobile Librarian	\$21,320	\$21,320
	Cataloger	\$22,589	\$22,589
	Circulation Clerk	\$16,494	\$15,746
	Circulation Librarian	\$23,234	\$15,558
	Collection Management Librarian	\$22,880	\$21,528
	Information Services Librarian	\$19,219	\$19,219
	Interlibrary Loan Librarian	\$23,213	\$23,213
	Interlibrary Loan Technician	\$26,998	\$16,224
	Library Aide	\$16,598	\$10,712
	Library Assistant	\$22,360	\$14,248
	Library Clerk	\$17,576	\$13,478
	Library Staff Member	\$22,360	\$22,360
	Public Services Librarian	\$29,120	\$20,010
	Reference Librarian	\$33,030	\$23,941
	Special Services Coordinator	\$11,648	\$11,648
	Systems Librarian	\$21,861	\$21,861
	Technical Services Assistant	\$19,926	\$19,926
	Technical Services Librarian	\$23,754	\$21,840
	Technology Librarian	\$25,958	\$17,264
	Youth Services Librarian	\$26,645	\$16,848
	Youth Worker	\$10,712	\$10,712
Over 25,000			
	Library Director	\$86,237	\$41,371
	Assistant Director	\$68,598	\$42,682
	Branch Librarian	\$27,747	\$23,234
	Administrative Assistant	\$27,747	\$22,734
	Administrative Coordinator	\$46,550	\$46,550
	Adult Services Librarian	\$37,024	\$37,024
	Bookmobile Librarian	\$36,525	\$36,525
	Business Clerk	\$27,622	\$27,622
	Cataloger	\$30,389	\$28,122

# Salaries

Population Category	Position	High	Low
	Circulation Clerk	\$24,461	\$19,157
	Circulation Librarian	\$44,658	\$26,395
	Circulation Supervisor	\$34,798	\$21,986
	Collection Management Librarian	\$44,824	\$36,608
	Coordinator of Volunteer Services	\$32,843	\$32,843
	Custodian	\$28,808	\$23,587
	Information Systems Technician	\$32,739	\$32,739
	Interlibrary Loan Librarian	\$38,771	\$24,190
	Library Aide	\$16,869	\$11,253
	Library Assistant	\$26,728	\$11,794
	Library Associate	\$26,000	\$23,109
	Library Clerk	\$19,843	\$13,707
	Library Specialist	\$23,150	\$19,760
	Library Staff Member	\$24,003	\$11,794
	Library Systems Manager	\$45,739	\$45,739
	Library Technician	\$36,525	\$18,678
	Network Manager	\$46,779	\$46,779
	Public Services Librarian	\$44,824	\$44,824
	Reference Librarian	\$38,938	\$30,888
	Special Services Librarian	\$38,771	\$38,771
	Substitute Librarian	\$19,781	\$19,781
	Systems Administrator	\$40,206	\$40,206
	Technical Services and Systems Supervisor	\$38,938	\$38,938
	Technical Services Director	\$28,454	\$28,454
	Technical Services Librarian	\$41,704	\$36,795
	Web Developer/Database Specialist	\$33,987	\$33,987
	Youth Services Librarian	\$38,771	\$26,354

# Statewide Mean for Yearly Salaries - SFY 2003

<b>Position</b>	<b>Number of Positions Reported</b>	<b>Mean Yearly Salary</b>
Administrative Assistant	5	\$24,107.20
Administrative Coordinator	1	\$46,550.40
Adult Basic Education Teacher	1	\$20,280.00
Adult Services Librarian	1	\$37,024.00
Archivist	1	\$22,505.60
Assistant Director	5	\$32,477.12
Assistant Librarian	30	\$16,972.11
Bookmobile Librarian	2	\$28,922.40
Branch Librarian	24	\$22,125.13
Business Clerk	1	\$27,622.40
Cataloger	3	\$27,033.07
Cataloging Technician	3	\$15,322.67
Circulation Clerk	11	\$20,488.00
Circulation Librarian	10	\$22,426.56
Circulation Supervisor	3	\$29,861.87
Collection Management Librarian	4	\$31,460.00
Community Librarian	2	\$15,600.00
Coordinator of Volunteer Services	1	\$32,843.20
Custodian	4	\$25,844.00
Information Services Librarian	1	\$19,219.20
Information Systems Technician	1	\$32,739.20
Interlibrary Loan Librarian	7	\$27,167.77
Interlibrary Loan Technician	2	\$21,611.20
Library Aide	33	\$14,190.01
Library Assistant	37	\$19,237.75
Library Associate	5	\$20,038.72
Library Clerk	39	\$15,984.00
Library Director	76	\$27,111.98
Library Specialist	5	\$21,756.80
Library Staff Member	15	\$15,769.17
Library Systems Manager	1	\$45,739.20
Library Technician	22	\$22,784.51
Network Manager	1	\$46,779.20
Photograph Archivist	1	\$13,520.00
Public Services Librarian	6	\$26,911.73
Reference Librarian	13	\$34,604.80
Special Services Coordinator	1	\$11,648.00
Special Services Librarian	1	\$38,771.20
Substitute Librarian	4	\$15,002.00
Systems Administrator	1	\$40,206.40
Systems Librarian	1	\$21,860.80
Technical Services and Systems Supervisor	2	\$29,868.80
Technical Services Assistant	1	\$19,926.40
Technical Services Director	2	\$20,467.20
Technical Services Librarian	4	\$31,023.20
Technology Librarian	2	\$21,611.20
Web Developer/Database Specialist	1	\$33,987.20
Youth Services Librarian	18	\$25,229.24
Youth Worker	1	\$10,712.00

# Library Income - SFY 2003

County	Library Name	Local Income			State Income	
		City/District	County	Local Total	Through Coal Severance	Federations Base Grant
Beaverhead	Dillon Public Library	56,841	7,000	63,841	505	1,700
Big Horn	Big Horn County Public Library	0	244,445	244,445	468	1,000
Blaine	Blaine County Library	0	87,750	87,750	1,859	0
	Harlem Public Library	0	59,200	59,200	1,465	0
Broadwater	Broadwater School and Community Libra	80,839	53,988	134,827	0	850
Carbon	Bridger Public Library	4,276	18,303	22,579	0	0
	Red Lodge Carnegie Library	33,020	38,291	71,311	468	1,000
Carter	Ekalaka Public Library	7,403	7,000	14,403	755	995
Cascade	Belt Public Library	2,000	10,000	12,000	515	569
	Great Falls Public Library	791,842	190,000	981,842	1,000	643
	Wedsworth Memorial Library	0	20,155	20,155	1,024	630
Chouteau	Chouteau County Library	0	178,330	178,330	397	0
Custer	Miles City Public Library	275,984	30,900	306,884	2,773	1,000
Daniels	Daniels County Library	0	51,441	51,441	353	0
Dawson	Glendive Public Library	0	153,437	153,437	1,033	1,000
Deer Lodge	Hearst Free Library	0	184,441	184,441	1,257	1,408
Fallon	Fallon County Library	0	149,436	149,436	800	1,000
Fergus	Denton Public Library	3,977	2,423	6,400	1,000	0
	Lewistown Public Library	180,347	49,173	229,520	468	1,000
	Moore Public Library	4,612	0	4,612	796	568
Flathead	Flathead County Library	0	1,084,687	1,084,687	1,242	957
Gallatin	Belgrade Community Library	48,847	81,751	130,598	1,052	850
	Bozeman Public Library	687,992	365,180	1,053,172	505	850
	Manhattan Community Library	4,000	32,702	36,702	1,000	2,115
	Three Forks Community Library	11,471	32,704	44,175	850	489
	West Yellowstone Public Library	86,598	32,702	119,300	0	0
Garfield	Garfield County Library	0	18,755	18,755	569	1,000
Glacier	Glacier County Library	0	160,000	160,000	1,341	569
Granite	Drummond School Community Library	15,468	0	15,468	0	1,271
	Philipsburg Public Library	8,523	0	8,523	300	2,526
Hill	Havre-Hill County Library	128,669	105,275	233,944	3,759	569
Jefferson	Boulder Community Library	4,500	161,932	166,432	850	2,580
Judith Basin	Judith Basin County Free Library	0	55,019	55,019	1,000	0
Lake	Polson City Library	120,189	14,848	135,037	1,242	957
	Ronan City Library	10,710	11,057	21,767	1,052	1,146
	St Ignatius School-Community Library	498	7,428	7,926	850	1,050
Lewis and Clark	Lewis and Clark Library	0	1,849,969	1,849,969	4,054	1,271
Liberty	Liberty County Library	0	59,311	59,311	1,234	570
Lincoln	Lincoln County Public Library	0	322,516	322,516	1,198	1,000
Madison	Madison Valley Public Library	10,459	6,978	17,437	850	489

Per Capita/ Sq Mile	State Income InterLibrary Loan	State Total	Federal Income	Other Income	Grand Total Income	Service Pop	Per Capita
1,625	1,611	5,441	0	669	69,951	9,202	7.60
1,984	2,524	5,976	0	0	250,421	12,671	19.76
767	2,930	5,556	0	745	94,051	4,299	21.88
419	476	2,360	0	0	61,560	2,710	22.72
615	0	1,465	0	5,684	141,976	4,385	32.38
0	0	0	0	75	22,654	2,259	10.03
680	0	2,148	0	2,451	75,910	5,083	14.93
518	0	2,268	0	1,535	18,206	1,360	13.39
171	70	1,325	0	2,280	15,605	1,522	10.25
8,793	8,016	18,452	0	202,073	1,202,367	77,128	15.59
170	132	1,956	0	2,092	24,203	1,708	14.17
1,096	556	2,049	0	11,000	191,379	5,970	32.06
1,706	4,333	9,812	0	4,584	321,280	11,696	27.47
380	920	1,653	0	600	53,694	2,017	26.62
1,260	1,860	5,153	0	1,658	160,248	9,059	17.69
1,119	1,065	4,849	0	2,571	191,861	9,417	20.37
491	1,898	4,189	0	5,987	159,612	2,837	56.26
57	0	1,057	0	773	8,230	301	27.34
1,511	2,365	5,344	0	75,309	310,173	11,406	27.19
38	0	1,402	0	767	6,781	186	36.46
8,770	14,938	25,907	0	129,104	1,239,698	74,471	16.65
1,037	1,112	4,051	0	12,239	146,888	10,272	14.30
5,482	7,555	14,392	1,034	0	1,068,598	47,805	22.35
365	0	3,480	0	2,725	42,907	3,214	13.35
402	0	1,741	0	1,193	47,109	3,546	13.29
365	546	911	0	67	120,278	2,995	40.16
655	0	2,224	0	133	21,112	1,279	16.51
1,594	489	3,993	0	3,757	167,750	13,247	12.66
165	0	1,436	0	101	17,005	1,117	15.22
0	0	2,826	0	6,690	18,039	1,713	10.53
2,151	2,397	8,876	0	0	242,820	16,673	14.56
1,290	1,083	5,803	0	0	172,235	10,049	17.14
463	386	1,849	1,027	700	58,595	2,329	25.16
1,373	1,323	4,895	95	45,528	185,555	11,789	15.74
1,018	1,304	4,520	0	40,683	66,970	8,765	7.64
686	0	2,586	0	160	10,672	5,953	1.79
6,523	7,277	19,125	0	101,805	1,970,899	55,716	35.37
352	2,771	4,927	0	34	64,272	2,158	29.78
2,474	4,415	9,087	0	28,995	360,598	18,837	19.14
282	1,026	2,647	0	11,662	31,746	1,129	28.12

# Library Income - SFY 2003

County	Library Name	Local Income			State Income	
		City/District	County	Local Total	Through Federations Coal Severance	Base Grant
Madison	Sheridan Public Library	9,500	1,050	10,550	0	850
	Thompson-Hickman County Library	1,000	57,434	58,434	84	1,271
	Twin Bridges Public Library	4,000	13,955	17,955	0	0
McCone	George McCone Memorial County Library	0	32,291	32,291	0	1,000
Meagher	Meagher County/City Library	4,401	55,273	59,674	0	0
Mineral	Mineral County Public Library	0	55,683	55,683	1,242	956
Missoula	Missoula Public Library	0	1,552,008	1,552,008	1,242	957
Musselshell	Roundup Community Library	72,962	4,219	77,181	1,199	468
Park	Livingston-Park County Public Library	99,343	149,938	249,281	0	1,272
Petroleum	Petroleum County School-Community Li	0	36,224	36,224	468	1,000
Phillips	Phillips County Library	531	61,600	62,131	247	1,000
Pondera	Conrad Public Library	42,903	75,574	118,477	1,851	2,603
	Valier Public Library	6,000	57,587	63,587	0	569
Powder River	Henry A Malley Memorial Library	0	43,275	43,275	440	998
Powell	William K. Kohrs Memorial Library	57,456	3,800	61,256	0	1,355
Prairie	Prairie County Library	0	25,772	25,772	473	1,000
Ravalli	Bitterroot Public Library	204,517	2,900	207,417	1,242	957
	Darby Community Public Library	28,476	300	28,776	2,198	8,444
	North Valley Public Library	79,928	4,580	84,508	2,000	0
Richland	Sidney Public Library	133,605	19,000	152,605	1,229	1,000
Roosevelt	Roosevelt County Library	9,518	211,871	221,389	0	0
Rosebud	Rosebud County Library	0	158,548	158,548	0	1,000
Sanders	Plains Public Library District	6,655	53,872	60,527	1,242	957
	Preston Town County Library	1,762	16,404	18,166	1,242	957
	Thompson Falls Public Library	51,675	0	51,675	1,242	957
Sheridan	Sheridan County Library	0	108,490	108,490	0	0
Silver Bow	Butte-Silver Bow Public Library	0	599,813	599,813	1,339	0
Stillwater	Stillwater County Library	0	121,663	121,663	468	0
Sweet Grass	Carnegie Public Library	40,687	28,563	69,250	1,096	0
Teton	Choteau Public Library	7,000	39,228	46,228	1,000	0
	Dutton Public Library	2,643	13,154	15,797	1,138	224
	Fairfield Public Library	5,924	20,331	26,255	467	245
Toole	Toole County Library	0	98,900	98,900	382	569
Valley	Glasgow City-County Library	28,465	84,687	113,152	0	0
Wheatland	Harlowton Public Library	25,862	2,470	28,332	468	1,000
Wibaux	Wibaux Public Library	0	16,361	16,361	400	1,000
Yellowstone	Laurel Public Library	121,836	0	121,836	468	1,000
	Parmly Billings Library	1,271,828	390,000	1,661,828	468	1,000
Totals:		4,897,542	10,155,345	15,052,887	65,219	68,231

Note: Joliet Community Library did not report and does not appear in report, reducing statewide service population from 900,302.

Per Capita/ Sq Mile	State Income InterLibrary Loan	State Total	Federal Income	Other Income	Grand Total Income	Service Pop	Per Capita
250	0	1,100	1,250	5,947	18,847	948	19.88
425	0	1,780	0	525	60,739	4,084	14.87
135	0	135	0	3,355	21,445	689	31.12
453	0	1,453	0	0	33,744	1,977	17.07
477	123	600	0	1,891	62,165	1,932	32.18
563	0	2,761	0	1,790	60,234	3,884	15.51
10,846	11,343	24,388	0	48,945	1,625,341	95,802	16.97
701	566	2,934	0	1,919	82,034	4,497	18.24
2,023	1,285	4,580	0	21,698	275,559	15,694	17.56
237	428	2,133	0	6,427	44,784	493	90.84
1,073	0	2,320	0	800	65,251	4,601	14.18
648	1,837	6,939	240	2,461	128,117	4,498	28.48
213	79	861	0	0	64,448	1,926	33.46
568	577	2,583	0	5,629	51,487	1,858	27.71
1,048	3,441	5,844	750	10,000	77,850	7,180	10.84
324	221	2,018	0	1,268	29,058	1,199	24.24
2,199	3,241	7,639	0	150,450	365,506	23,844	15.33
657	0	11,299	0	5,301	45,376	3,907	11.61
1,000	0	3,000	0	9,000	96,508	8,319	11.60
1,295	3,557	7,081	1,256	1,667	162,609	9,667	16.82
1,430	3,250	4,680	0	3,239	229,308	10,620	21.59
1,711	2,896	5,607	0	1,740	165,895	9,383	17.68
496	697	3,392	0	832	64,751	3,808	17.00
264	159	2,622	0	3,803	24,591	1,691	14.54
671	719	3,589	0	19,348	74,612	4,728	15.78
637	2,694	3,331	0	3,647	115,468	4,105	28.13
3,894	5,762	10,995	0	229	611,037	34,606	17.66
1,101	96	1,665	0	2,010	125,338	8,195	15.29
602	0	1,698	0	5,802	76,750	3,609	21.27
476	795	2,271	0	6,341	54,840	3,444	15.92
240	0	1,602	0	621	18,020	1,401	12.86
569	163	1,444	0	2,177	29,876	1,599	18.68
791	0	1,742	0	631	101,273	5,267	19.23
1,389	3,490	4,879	0	6,347	124,378	7,675	16.21
407	0	1,875	0	45,459	75,666	2,269	33.35
215	623	2,238	0	10,485	29,084	1,068	27.23
632	288	2,388	0	3,348	127,572	6,255	20.40
13,838	10,264	25,570	3,483	904,008	2,594,889	123,097	21.08
113,345	133,972	380,767	9,135	2,005,569	17,448,358	898,092	19.43



# Library Income by Service Area Population-SFY 2003

County	Library Name	Local City Income	Local County Income	Total Local Income	State Income Through Coal	State Income Through Federations Severance Base Grant
<b>Over 25,000</b>						
Gallatin	Bozeman Public Library	587,992	365,180	1,053,172	505	850
Silver Bow	Butte-Silver Bow Public Library	0	599,813	599,813	1,339	0
Flathead	Flathead County Library	0	1,084,687	1,084,687	1,242	957
Cascade	Great Falls Public Library	791,842	190,000	981,842	1,000	643
Lewis and Clark	Lewis and Clark Library	0	1,849,969	1,849,969	4,054	1,271
Missoula	Missoula Public Library	0	1,552,008	1,552,008	1,242	957
Yellowstone	Parmly Billings Library	271,828	390,000	1,661,828	468	1,000
<b>Totals</b>		<b>2,751,662</b>	<b>6,031,657</b>	<b>8,783,319</b>	<b>9,850</b>	<b>5,678</b>
<b>10,000-24,999</b>						
Gallatin	Belgrade Community Library	48,847	81,751	130,598	1,052	850
Big Horn	Big Horn County Public Library	0	244,445	244,445	468	1,000
Ravalli	Bitterroot Public Library	204,517	2,900	207,417	1,242	957
Jefferson	Boulder Community Library	4,500	161,932	166,432	850	2,580
Glacier	Glacier County Library	0	160,000	160,000	1,341	569
Hill	Havre-Hill County Library	128,669	105,275	233,944	3,759	569
Fergus	Lewistown Public Library	180,347	49,173	229,520	468	1,000
Lincoln	Lincoln County Public Library	0	322,516	322,516	1,198	1,000
Park	Livingston-Park County Public Library	99,343	149,938	249,281	0	1,272
Custer	Miles City Public Library	275,984	30,900	306,884	2,773	1,000
Lake	Polson City Library	120,189	14,848	135,037	1,242	957
Roosevelt	Roosevelt County Library	9,518	211,871	221,389	0	0
<b>Totals</b>		<b>1,071,914</b>	<b>1,535,549</b>	<b>2,607,463</b>	<b>14,393</b>	<b>11,754</b>
<b>5,000-9,999</b>						
Chouteau	Chouteau County Library	0	178,330	178,330	397	0
Beaverhead	Dillon Public Library	56,841	7,000	63,841	505	1,700
Valley	Glasgow City-County Library	28,465	84,687	113,152	0	0
Dawson	Glendive Public Library	0	153,437	153,437	1,033	1,000
Deer Lodge	Hearst Free Library	0	184,441	184,441	1,257	1,408
Yellowstone	Laurel Public Library	121,836	0	121,836	468	1,000
Ravalli	North Valley Public Library	79,928	4,580	84,508	2,000	0
Carbon	Red Lodge Carnegie Library	33,020	38,291	71,311	468	1,000
Lake	Ronan City Library	10,710	11,057	21,767	1,052	1,146
Rosebud	Rosebud County Library	0	158,548	158,548	0	1,000
Richland	Sidney Public Library	133,605	19,000	152,605	1,229	1,000
Lake	St Ignatius School-Community Library	498	7,428	7,926	850	1,050
Stillwater	Stillwater County Library	0	121,663	121,663	468	0
Toole	Toole County Library	0	98,900	98,900	382	569
Powell	William K. Kohrs Memorial Library	57,456	3,800	61,256	0	1,355
<b>Totals</b>		<b>522,359</b>	<b>1,071,162</b>	<b>1,593,521</b>	<b>10,109</b>	<b>12,228</b>
<b>3,500-4,999</b>						
Blaine	Blaine County Library	0	87,750	87,750	1,859	0
Broadwater	Broadwater School and Community Library	80,839	53,988	134,827	0	850
Sweet Grass	Carnegie Public Library	40,687	28,563	69,250	1,096	0
Pondera	Conrad Public Library	42,903	75,574	118,477	1,851	2,603
Ravalli	Darby Community Public Library	28,476	300	28,776	2,198	8,444
Mineral	Mineral County Public Library	0	55,683	55,683	1,242	956
Phillips	Phillips County Library	531	61,600	62,131	247	1,000

PerCapita/ Sq Mile	State Income Interlibrary Loan	Total State Income	Federal Income	Other Income	Total Income	Service Pop	Per Capita
5,482	7,555	14,392	1,034	0	1,068,598	47,805	22.35
3,894	5,762	10,995	0	229	611,037	34,606	17.66
8,770	14,938	25,907	0	129,104	1,239,698	74,471	16.65
8,793	8,016	18,452	0	202,073	1,202,367	77,128	15.59
6,523	7,277	19,125	0	101,805	1,970,899	55,716	35.37
10,846	11,343	24,388	0	48,945	1,625,341	95,802	16.97
13,838	10,264	25,570	3,483	904,008	2,594,889	123,097	21.08
58,146	65,155	138,829	4,517	1,386,164	10,312,829	508,625	20.28
1,037	1,112	4,051	0	12,239	146,888	10,272	14.30
1,984	2,524	5,976	0	0	250,421	12,671	19.76
2,199	3,241	7,639	0	150,450	365,506	23,844	15.33
1,290	1,083	5,803	0	0	172,235	10,049	17.14
1,594	489	3,993	0	3,757	167,750	13,247	12.66
2,151	2,397	8,876	0	0	242,820	16,673	14.56
1,511	2,365	5,344	0	75,309	310,173	11,406	27.19
2,474	4,415	9,087	0	28,995	360,598	18,837	19.14
2,023	1,285	4,580	0	21,698	275,559	15,694	17.56
1,706	4,333	9,812	0	4,584	321,280	11,696	27.47
1,373	1,323	4,895	95	45,528	185,555	11,789	15.74
1,430	3,250	4,680	0	3,239	229,308	10,620	21.59
20,772	27,817	74,736	95	345,799	3,028,093	166,798	18.15
1,096	556	2,049	0	11,000	191,379	5,970	32.06
1,625	1,611	5,441	0	669	69,951	9,202	7.60
1,389	3,490	4,879	0	6,347	124,378	7,675	16.21
1,260	1,860	5,153	0	1,658	160,248	9,059	17.69
1,119	1,065	4,849	0	2,571	191,861	9,417	20.37
632	288	2,388	0	3,348	127,572	6,255	20.40
1,000	0	3,000	0	9,000	96,508	8,319	11.60
680	0	2,148	0	2,451	75,910	5,083	14.93
1,018	1,304	4,520	0	40,683	66,970	8,765	7.64
1,711	2,896	5,607	0	1,740	165,895	9,383	17.68
1,295	3,557	7,081	1,256	1,667	162,609	9,667	16.82
686	0	2,586	0	160	10,672	5,953	1.79
1,101	96	1,665	0	2,010	125,338	8,195	15.29
791	0	1,742	0	631	101,273	5,267	19.23
1,048	3,441	5,844	750	10,000	77,850	7,180	10.84
16,451	20,164	58,952	2,006	93,935	1,748,414	115,390	15.15
767	2,930	5,556	0	745	94,051	4,299	21.88
615	0	1,465	0	5,684	141,976	4,385	32.38
602	0	1,698	0	5,802	76,750	3,609	21.27
648	1,837	6,939	240	2,461	128,117	4,498	28.48
657	0	11,299	0	5,301	45,376	3,907	11.61
563	0	2,761	0	1,790	60,234	3,884	15.51
1,073	0	2,320	0	800	65,251	4,601	14.18

# Library Income by Service Area Population-SFY 2003

County	Library Name	Local Income			State Income	
		City Income	County Income	Total Local Income	Through Coal	Federations Severance Base Grant
Sanders	Plains Public Library District	6,655	53,872	60,527	1,242	957
Musselshell	Roundup Community Library	72,962	4,219	77,181	1,199	468
Sheridan	Sheridan County Library	0	108,490	108,490	0	0
Sanders	Thompson Falls Public Library	51,675	0	51,675	1,242	957
Madison	Thompson-Hickman County Library	1,000	57,434	58,434	84	1,271
Gallatin	Three Forks Community Library	11,471	32,704	44,175	850	489
Totals		337,199	620,177	957,376	13,110	17,995
2,000-3,499						
Carbon	Bridger Public Library	4,276	18,303	22,579	0	0
Teton	Choteau Public Library	7,000	39,228	46,228	1,000	0
Daniels	Daniels County Library	0	51,441	51,441	353	0
Fallon	Fallon County Library	0	149,436	149,436	800	1,000
Blaine	Harlem Public Library	0	59,200	59,200	1,465	0
Wheatland	Harlowton Public Library	25,862	2,470	28,332	468	1,000
Judith Basin	Judith Basin County Free Library	0	55,019	55,019	1,000	0
Liberty	Liberty County Library	0	59,311	59,311	1,234	570
Gallatin	Manhattan Community Library	4,000	32,702	36,702	1,000	2,115
	West Yellowstone Public Library	86,598	32,702	119,300	0	0
Totals		127,736	499,812	627,548	7,320	4,685
1,200-1,999						
Cascade	Belt Public Library	2,000	10,000	12,000	515	569
Teton	Dutton Public Library	2,643	13,154	15,797	1,138	224
Carter	Ekalaka Public Library	7,403	7,000	14,403	755	995
Teton	Fairfield Public Library	5,924	20,331	26,255	467	245
Garfield	Garfield County Library	0	18,755	18,755	569	1,000
McCone	George McCone Memorial County Library	0	32,291	32,291	0	1,000
Powder River	Henry A Malley Memorial Library	0	43,275	43,275	440	998
Meagher	Meagher County/City Library	4,401	55,273	59,674	0	0
Granite	Philipsburg Public Library	8,523	0	8,523	300	2,526
Sanders	Preston Town County Library	1,762	16,404	18,166	1,242	957
Pondera	Valier Public Library	6,000	57,587	63,587	0	569
Cascade	Wedsworth Memorial Library	0	20,155	20,155	1,024	630
Totals		38,656	294,225	332,881	6,450	9,713
1,199 and Under						
Fergus	Denton Public Library	3,977	2,423	6,400	1,000	0
Granite	Drummond School Community Library	15,468	0	15,468	0	1,271
Madison	Madison Valley Public Library	10,459	6,978	17,437	850	489
Fergus	Moore Public Library	4,612	0	4,612	796	568
Petroleum	Petroleum County School-Community Library	0	36,224	36,224	468	1,000
Prairie	Prairie County Library	0	25,772	25,772	473	1,000
Madison	Sheridan Public Library	9,500	1,050	10,550	0	850
	Twin Bridges Public Library	4,000	13,955	17,955	0	0
Wibaux	Wibaux Public Library	0	16,361	16,361	400	1,000
Totals		48,016	102,763	150,779	3,987	6,178
Grand Totals		4,897,542	0,155,345	15,052,887	65,219	68,231

Note: Joliet Community Library did not report and does not appear in report, reducing statewide service population from 900,302.

PerCapita/ Sq Mile	State Income Interlibrary Loan	Total State Income	Federal Income	Other Income	Total Income	Service Pop	Per Capita
496	697	3,392	0	832	64,751	3,808	17.00
701	566	2,934	0	1,919	82,034	4,497	18.24
637	2,694	3,331	0	3,647	115,468	4,105	28.13
671	719	3,589	0	19,348	74,612	4,728	15.78
425	0	1,780	0	525	60,739	4,084	14.87
402	0	1,741	0	1,193	47,109	3,546	13.29
8,257	9,443	48,805	240	50,047	1,056,468	53,951	19.58
0	0	0	0	75	22,654	2,259	10.03
476	795	2,271	0	6,341	54,840	3,444	15.92
380	920	1,653	0	600	53,694	2,017	26.62
491	1,898	4,189	0	5,987	159,612	2,837	56.26
419	476	2,360	0	0	61,560	2,710	22.72
407	0	1,875	0	45,459	75,666	2,269	33.35
463	386	1,849	1,027	700	58,595	2,329	25.16
352	2,771	4,927	0	34	64,272	2,158	29.78
365	0	3,480	0	2,725	42,907	3,214	13.35
365	546	911	0	67	120,278	2,995	40.16
3,718	7,792	23,515	1,027	61,988	714,078	26,232	27.22
171	70	1,325	0	2,280	15,605	1,522	10.25
240	0	1,602	0	621	18,020	1,401	12.86
518	0	2,268	0	1,535	18,206	1,360	13.39
569	163	1,444	0	2,177	29,876	1,599	18.68
655	0	2,224	0	133	21,112	1,279	16.51
453	0	1,453	0	0	33,744	1,977	17.07
568	577	2,583	0	5,629	51,487	1,858	27.71
477	123	600	0	1,891	62,165	1,932	32.18
0	0	2,826	0	6,690	18,039	1,713	10.53
264	159	2,622	0	3,803	24,591	1,691	14.54
213	79	861	0	0	64,448	1,926	33.46
170	132	1,956	0	2,092	24,203	1,708	14.17
4,298	1,303	21,764	0	26,851	381,496	19,966	19.11
57	0	1,057	0	773	8,230	301	27.34
165	0	1,436	0	101	17,005	1,117	15.22
282	1,026	2,647	0	11,662	31,746	1,129	28.12
38	0	1,402	0	767	6,781	186	36.46
237	428	2,133	0	6,427	44,784	493	90.84
324	221	2,018	0	1,268	29,058	1,199	24.24
250	0	1,100	1,250	5,947	18,847	948	19.88
135	0	135	0	3,355	21,445	689	31.12
215	623	2,238	0	10,485	29,084	1,068	27.23
1,703	2,298	14,166	1,250	40,785	206,980	7,130	29.03
113,345	133,972	380,767	9,135	2,005,569	17,448,358	898,092	19.43

# Expenditures - SFY 2003

County	Library Name	Salaries	Benefits	Print Collection	Electronic Materials
Beaverhead	Dillon Public Library	33,278	3,393	7,150	600
Big Horn	Big Horn County Public Library	83,625	33,792	13,165	0
Blaine	Blaine County Library	35,695	11,898	14,982	1,553
	Harlem Public Library	31,703	0	11,728	0
Broadwater	Broadwater School and Community Library	89,787	18,200	11,056	0
Carbon	Bridger Public Library	11,946	878	3,500	0
	Red Lodge Carnegie Library	40,933	11,976	4,260	3,578
Carter	Ekalaka Public Library	10,318	0	2,400	420
Cascade	Belt Public Library	8,884	7,104	3,286	4,529
	Great Falls Public Library	527,106	211,871	154,615	0
	Wedsworth Memorial Library	9,455	700	1,133	230
Chouteau	Chouteau County Library	82,470	9,910	16,000	11,000
Custer	Miles City Public Library	164,298	59,276	22,837	1,500
Daniels	Daniels County Library	29,724	12,851	7,469	0
Dawson	Glendive Public Library	62,763	15,546	14,161	0
Deer Lodge	Hearst Free Library	82,712	24,206	10,200	2,000
Fallon	Fallon County Library	53,739	13,293	9,706	0
Fergus	Denton Public Library	3,150	0	2,176	0
	Lewistown Public Library	131,047	42,069	23,045	1,000
	Moore Public Library	4,017	0	100	0
Flathead	Flathead County Library	712,004	188,472	115,495	6,062
Gallatin	Belgrade Community Library	86,317	7,633	8,553	1,000
	Bozeman Public Library	541,904	167,144	83,350	5,500
	Manhattan Community Library	33,550	2,340	14,080	0
	Three Forks Community Library	33,622	5,887	3,775	200
	West Yellowstone Public Library	62,479	0	7,767	0
Garfield	Garfield County Library	8,623	4,961	2,600	100
Glacier	Glacier County Library	81,275	23,481	24,893	850
Granite	Drummond School Community Library	11,368	236	3,000	0
	Philipsburg Public Library	7,150	376	5,235	0
Hill	Havre-Hill County Library	129,192	28,592	22,652	0
Jefferson	Boulder Community Library	76,770	20,773	26,631	1,485
Judith Basin	Judith Basin County Free Library	33,587	6,205	5,000	500
Lake	Polson City Library	81,938	24,510	12,958	0
	Ronan City Library	32,870	7,710	9,965	0
	St Ignatius School-Community Library	6,600	0	500	0
Lewis and Clark	Lewis and Clark Library	844,540	190,955	234,709	0
Liberty	Liberty County Library	36,116	5,151	9,774	1,350
Lincoln	Lincoln County Public Library	212,162	53,529	30,532	0
Madison	Madison Valley Public Library	21,970	1,500	4,000	0

# Expenditures - SFY 2003

Continuing Education	Computer Services	Other Materials	Other Operating	Capital Outlay	Total Expenses	Service Area Population	Per Capita
500	3,000	1,000	16,520	0	65,441	9,202	7.11
0	52,417	2,258	47,390	40,020	232,647	12,671	18.36
1,111	916	0	12,947	0	79,102	4,299	18.40
1,268	468	647	6,471	0	52,285	2,710	19.29
1,060	1,904	0	8,792	0	130,799	4,385	29.83
300	200	3,575	3,117	23,456	23,516	2,259	10.41
0	800	299	8,402	3,898	70,248	5,083	13.82
0	336	0	3,287	0	16,761	1,360	12.32
0	180	0	5,333	2,784	29,316	1,522	19.26
7,021	20,401	0	179,663	95,180	1,100,677	77,128	14.27
0	55	0	15,462	0	27,035	1,708	15.83
1,000	4,000	4,000	23,830	0	152,210	5,970	25.50
500	1,880	500	53,850	1,000	304,641	11,696	26.05
431	450	0	7,560	0	58,485	2,017	29.00
1,808	1,452	0	26,394	0	122,124	9,059	13.48
2,000	5,000	6,000	52,000	0	184,118	9,417	19.55
1,476	1,267	8,804	13,205	2,036	101,490	2,837	35.77
0	0	0	3,086	3,429	8,412	301	27.95
5,962	5,729	8,841	92,480	0	310,173	11,406	27.19
300	840	0	0	0	5,257	186	28.26
2,155	30,232	7,559	163,419	18,155	1,225,398	74,471	16.45
654	2,524	1,328	38,879	0	146,888	10,272	14.30
14,744	35,683	16,150	188,697	1,830,007	1,053,172	47,805	22.03
850	1,000	1,000	850	0	53,670	3,214	16.70
150	250	0	10,003	0	53,887	3,546	15.20
1,302	1,480	315	10,255	0	83,598	2,995	27.91
510	451	1,500	1,480	500	20,225	1,279	15.81
1,506	7,325	0	15,681	0	155,011	13,247	11.70
0	0	0	1,574	0	16,178	1,117	14.48
800	150	0	0	0	13,711	1,713	8.00
1,000	0	0	24,395	36,989	205,831	16,673	12.35
1,000	3,000	0	40,252	131,000	169,911	10,049	16.91
1,000	2,000	575	3,050	1,000	51,917	2,329	22.29
2,863	11,437	260	46,586	0	180,552	11,789	15.32
1,265	4,237	1,873	5,714	0	63,634	8,765	7.26
300	0	50	200	8,200	7,650	5,953	1.29
18,490	22,105	0	297,435	94,398	1,608,234	55,716	28.86
599	2,416	250	7,883	800	63,539	2,158	29.44
2,909	7,804	1,866	49,771	0	358,573	18,837	19.04
850	554	800	2,072	0	31,746	1,129	28.12

# Expenditures - SFY 2003

County	Library Name	Salaries	Benefits	Print Collection	Electronic Materials
Madison	Sheridan Public Library	6,856	2,522	2,113	0
	Thompson-Hickman County Library	24,847	7,765	5,356	800
	Twin Bridges Public Library	7,500	2,845	3,205	110
McCone	George McCone Memorial County Library	12,372	3,445	572	0
Meagher	Meagher County/City Library	22,642	3,190	4,323	0
Mineral	Mineral County Public Library	24,150	1,967	10,894	872
Missoula	Missoula Public Library	723,790	216,859	211,189	0
Musselshell	Roundup Community Library	64,476	13,499	8,424	1,112
Park	Livingston-Park County Public Library	147,378	49,471	23,052	1,497
Petroleum	Petroleum County School-Community Library	26,410	2,879	7,500	867
Phillips	Phillips County Library	33,700	13,500	6,500	800
Pondera	Conrad Public Library	63,450	11,579	8,325	220
	Valier Public Library	23,719	3,082	5,810	0
Powder River	Henry A Malley Memorial Library	26,625	6,050	8,394	0
Powell	William K. Kohrs Memorial Library	30,407	4,472	10,463	0
Prairie	Prairie County Library	15,754	2,370	4,004	0
Ravalli	Bitterroot Public Library	108,532	20,673	39,861	0
	Darby Community Public Library	7,534	886	759	0
	North Valley Public Library	56,418	19,135	12,000	1,600
Richland	Sidney Public Library	80,159	24,114	13,650	0
Roosevelt	Roosevelt County Library	109,216	33,634	40,726	0
Rosebud	Rosebud County Library	94,552	16,323	25,065	3,396
Sanders	Plains Public Library District	27,027	3,610	7,903	0
	Preston Town County Library	15,787	5,590	4,945	0
	Thompson Falls Public Library	32,217	11,537	6,059	0
Sheridan	Sheridan County Library	49,737	12,257	20,345	849
Silver Bow	Butte-Silver Bow Public Library	314,451	125,349	51,500	2,001
Stillwater	Stillwater County Library	48,199	14,758	20,000	2,500
Sweet Grass	Carnegie Public Library	31,419	10,275	11,161	0
Teton	Choteau Public Library	21,602	1,918	13,204	0
	Dutton Public Library	11,466	0	3,840	500
	Fairfield Public Library	9,976	1,763	2,970	200
Toole	Toole County Library	46,233	11,908	15,789	50
Valley	Glasgow City-County Library	62,423	15,606	29,026	1,249
Wheatland	Harlowton Public Library	13,692	6,081	4,133	0
Wibaux	Wibaux Public Library	13,641	2,060	5,080	3,022
Yellowstone	Laurel Public Library	66,288	23,679	17,767	0
	Parmly Billings Library	969,969	313,333	246,325	969
Totals:		7,995,301	2,236,402	1,870,670	66,071

Note: Joliet Community Library did not report and does not appear in report, reducing statewide service population from 900,302.

# Expenditures - SFY 2003

Continuing Education	Computer Services	Other Materials	Other Operating	Capital Outlay	Total Expenses	Service Area Population	Per Capita
322	709	0	3,262	2,168	15,784	948	16.65
566	4,490	709	5,562	550	50,095	4,084	12.27
997	1,299	0	2,501	1,227	18,457	689	26.79
300	1,532	3,696	10,374	0	32,291	1,977	16.33
0	6,306	0	28,169	0	64,630	1,932	33.45
0	2,805	613	6,629	1,205	47,930	3,884	12.34
13,657	37,371	0	174,126	248,349	1,376,992	95,802	14.37
115	240	1,628	0	0	89,494	4,497	19.90
1,496	2,087	11,920	73,252	0	310,153	15,694	19.76
0	1,915	3,500	2,500	0	45,571	493	92.44
100	0	2,100	2,000	0	58,700	4,601	12.76
1,000	937	1,375	33,464	5,000	120,350	4,498	26.76
608	2,200	0	18,088	0	53,507	1,926	27.78
64	1,578	0	5,858	0	48,569	1,858	26.14
947	1,176	0	21,424	0	68,889	7,180	9.59
0	1,413	990	5,412	0	29,943	1,199	24.97
5,277	2,036	0	61,517	0	237,896	23,844	9.98
0	559	2,379	3,636	53,875	15,753	3,907	4.03
250	1,500	0	28,595	0	119,498	8,319	14.36
2,475	4,784	4,412	16,060	9,503	145,654	9,667	15.07
1,027	2,349	0	46,008	0	232,960	10,620	21.94
3,202	4,005	2,401	15,220	4,825	164,164	9,383	17.50
985	2,719	0	13,977	2,000	56,221	3,808	14.76
632	469	0	1,538	0	28,961	1,691	17.13
306	0	0	18,770	13,744	68,889	4,728	14.57
727	450	0	31,103	0	115,468	4,105	28.13
1,070	3,288	6,285	99,375	0	603,319	34,606	17.43
1,400	4,400	3	4,852	0	96,112	8,195	11.73
407	0	1,148	13,605	6,256	68,015	3,609	18.85
0	4,309	0	6,566	4,000	47,599	3,444	13.82
119	600	0	2,643	0	19,168	1,401	13.68
0	2,196	0	7,776	4,000	24,881	1,599	15.56
812	948	0	0	0	75,740	5,267	14.38
629	1,673	8,772	30,310	0	149,688	7,675	19.50
0	0	1,137	10,891	0	35,934	2,269	15.84
86	539	232	4,056	0	28,716	1,068	26.89
110	2,398	0	17,330	0	127,572	6,255	20.40
13,137	51,018	95,721	553,083	429,756	2,243,555	123,097	18.23
130,507	390,241	218,471	2,867,517	3,079,310	15,775,180	898,092	17.57



# Expenditures by Service Area Population - SFY 2003

County	Library Name	Salaries	Benefits	Print Materials	Electronic Materials
<b>Over 25,000</b>					
Gallatin	Bozeman Public Library	541,904	167,144	83,350	5,500
Silver Bow	Butte-Silver Bow Public Library	314,451	125,349	51,500	2,001
Flathead	Flathead County Library	712,004	188,472	115,495	6,062
Cascade	Great Falls Public Library	527,106	211,871	154,615	0
Lewis and Clark	Lewis and Clark Library	844,540	190,955	234,709	0
Missoula	Missoula Public Library	723,790	216,859	211,189	0
Yellowstone	Parmly Billings Library	969,969	313,333	246,325	969
<b>SubTotals:</b>		<b>4,633,764</b>	<b>1,413,983</b>	<b>1,097,183</b>	<b>14,532</b>
<b>10,000-24,999</b>					
Gallatin	Belgrade Community Library	86,317	7,633	8,553	1,000
Big Horn	Big Horn County Public Library	83,625	33,792	13,165	0
Ravalli	Bitterroot Public Library	108,532	20,673	39,861	0
Jefferson	Boulder Community Library	76,770	20,773	26,631	1,485
Glacier	Glacier County Library	81,275	23,481	24,893	850
Hill	Havre-Hill County Library	129,192	28,592	22,652	0
Fergus	Lewistown Public Library	131,047	42,069	23,045	1,000
Lincoln	Lincoln County Public Library	212,162	53,529	30,532	0
Park	Livingston-Park County Public Library	147,378	49,471	23,052	1,497
Custer	Miles City Public Library	164,298	59,276	22,837	1,500
Lake	Polson City Library	81,938	24,510	12,958	0
Roosevelt	Roosevelt County Library	109,216	33,634	40,726	0
<b>SubTotals:</b>		<b>1,411,750</b>	<b>397,433</b>	<b>288,905</b>	<b>7,332</b>
<b>5,000-9,999</b>					
Chouteau	Chouteau County Library	82,470	9,910	16,000	11,000
Beaverhead	Dillon Public Library	33,278	3,393	7,150	600
Valley	Glasgow City-County Library	62,423	15,606	29,026	1,249
Dawson	Glendive Public Library	62,763	15,546	14,161	0
Deer Lodge	Hearst Free Library	82,712	24,206	10,200	2,000
Yellowstone	Laurel Public Library	66,288	23,679	17,767	0
Ravalli	North Valley Public Library	56,418	19,135	12,000	1,600
Carbon	Red Lodge Carnegie Library	40,933	11,976	4,260	3,578
Lake	Ronan City Library	32,870	7,710	9,965	0
Rosebud	Rosebud County Library	94,552	16,323	25,065	3,396
Richland	Sidney Public Library	80,159	24,114	13,650	0
Lake	St Ignatius School-Community Library	6,600	0	500	0
Stillwater	Stillwater County Library	48,199	14,758	20,000	2,500
Toole	Toole County Library	46,233	11,908	15,789	50
Powell	William K. Kohrs Memorial Library	30,407	4,472	10,463	0
<b>SubTotals:</b>		<b>826,305</b>	<b>202,736</b>	<b>205,996</b>	<b>25,973</b>
<b>3,500-4,999</b>					
Blaine	Blaine County Library	35,695	11,898	14,982	1,553
Broadwater	Broadwater School and Community Library	89,787	18,200	11,056	0
Sweet Grass	Carnegie Public Library	31,419	10,275	11,161	0
Pondera	Conrad Public Library	63,450	11,579	8,325	220
Ravalli	Darby Community Public Library	7,534	886	759	0
Mineral	Mineral County Public Library	24,150	1,967	10,894	872
Phillips	Phillips County Library	33,700	13,500	6,500	800

# Expenditures by Service Area Population - SFY 2003

	Continuing Education	Computer Services	Other Materials	Other Operating Expenses	Capital Outlay	Total Operating Expenses	Service Area Population	Per Capita
Over 25,000								
	14,744	35,683	16,150	188,697	1,830,007	1,053,172	47,805	22.03
	1,070	3,288	6,285	99,375	0	603,319	34,606	17.43
	2,155	30,232	7,559	163,419	18,155	1,225,398	74,471	16.45
	7,021	20,401	0	179,663	95,180	1,100,677	77,128	14.27
	18,490	22,105	0	297,435	94,398	1,608,234	55,716	28.86
	13,657	37,371	0	174,126	248,349	1,376,992	95,802	14.37
	13,137	51,018	95,721	553,083	429,756	2,243,555	123,097	18.23
	70,274	200,098	125,715	1,655,798	2,715,845	9,211,347	508,625	18.11
10,000-24,999								
	654	2,524	1,328	38,879	0	146,888	10,272	14.30
	0	52,417	2,258	47,390	40,020	232,647	12,671	18.36
	5,277	2,036	0	61,517	0	237,896	23,844	9.98
	1,000	3,000	0	40,252	131,000	169,911	10,049	16.91
	1,506	7,325	0	15,681	0	155,011	13,247	11.70
	1,000	0	0	24,395	36,989	205,831	16,673	12.35
	5,962	5,729	8,841	92,480	0	310,173	11,406	27.19
	2,909	7,804	1,866	49,771	0	358,573	18,837	19.04
	1,496	2,087	11,920	73,252	0	310,153	15,694	19.76
	500	1,880	500	53,850	1,000	304,641	11,696	26.05
	2,863	11,437	260	46,586	0	180,552	11,789	15.32
	1,027	2,349	0	46,008	0	232,960	10,620	21.94
	24,194	98,588	26,973	590,061	209,009	2,845,236	166,798	17.06
5,000-9,999								
	1,000	4,000	4,000	23,830	0	152,210	5,970	25.50
	500	3,000	1,000	16,520	0	65,441	9,202	7.11
	629	1,673	8,772	30,310	0	149,688	7,675	19.50
	1,808	1,452	0	26,394	0	122,124	9,059	13.48
	2,000	5,000	6,000	52,000	0	184,118	9,417	19.55
	110	2,398	0	17,330	0	127,572	6,255	20.40
	250	1,500	0	28,595	0	119,498	8,319	14.36
	0	800	299	8,402	3,898	70,248	5,083	13.82
	1,265	4,237	1,873	5,714	0	63,634	8,765	7.26
	3,202	4,005	2,401	15,220	4,825	164,164	9,383	17.50
	2,475	4,784	4,412	16,060	9,503	145,654	9,667	15.07
	300	0	50	200	8,200	7,650	5,953	1.29
	1,400	4,400	3	4,852	0	96,112	8,195	11.73
	812	948	0	0	0	75,740	5,267	14.38
	947	1,176	0	21,424	0	68,889	7,180	9.59
	16,698	39,373	28,810	266,851	26,426	1,612,742	115,390	13.98
3,500-4,999								
	1,111	916	0	12,947	0	79,102	4,299	18.40
	1,060	1,904	0	8,792	0	130,799	4,385	29.83
	407	0	1,148	13,605	6,256	68,015	3,609	18.85
	1,000	937	1,375	33,464	5,000	120,350	4,498	26.76
	0	559	2,379	3,636	53,875	15,753	3,907	4.03
	0	2,805	613	6,629	1,205	47,930	3,884	12.34
	100	0	2,100	2,000	0	58,700	4,601	12.76

# Expenditures by Service Area Population - SFY 2003

County	Library Name	Salaries	Benefits	Print Materials	Electronic Materials
Sanders	Plains Public Library District	27,027	3,610	7,903	0
Musselshell	Roundup Community Library	64,476	13,499	8,424	1,112
Sheridan	Sheridan County Library	49,737	12,257	20,345	849
Sanders	Thompson Falls Public Library	32,217	11,537	6,059	0
Madison	Thompson-Hickman County Library	24,847	7,765	5,356	800
Gallatin	Three Forks Community Library	33,622	5,887	3,775	200
<b>SubTotals:</b>		<b>517,661</b>	<b>122,860</b>	<b>115,539</b>	<b>6,406</b>
<b>2,000-3,499</b>					
Carbon	Bridger Public Library	11,946	878	3,500	0
Teton	Choteau Public Library	21,602	1,918	13,204	0
Daniels	Daniels County Library	29,724	12,851	7,469	0
Fallon	Fallon County Library	53,739	13,293	9,706	0
Blaine	Harlem Public Library	31,703	0	11,728	0
Wheatland	Harlowton Public Library	13,692	6,081	4,133	0
Judith Basin	Judith Basin County Free Library	33,587	6,205	5,000	500
Liberty	Liberty County Library	36,116	5,151	9,774	1,350
Gallatin	Manhattan Community Library	33,550	2,340	14,080	0
	West Yellowstone Public Library	62,479	0	7,767	0
<b>SubTotals:</b>		<b>328,138</b>	<b>48,717</b>	<b>86,361</b>	<b>1,850</b>
<b>1,200-1,999</b>					
Cascade	Belt Public Library	8,884	7,104	3,286	4,529
Teton	Dutton Public Library	11,466	0	3,840	500
Carter	Ekalaka Public Library	10,318	0	2,400	420
Teton	Fairfield Public Library	9,976	1,763	2,970	200
Garfield	Garfield County Library	8,623	4,961	2,600	100
McCone	George McCone Memorial County Library	12,372	3,445	572	0
Powder River	Henry A Malley Memorial Library	26,625	6,050	8,394	0
Meagher	Meagher County/City Library	22,642	3,190	4,323	0
Granite	Philipsburg Public Library	7,150	376	5,235	0
Sanders	Preston Town County Library	15,787	5,590	4,945	0
Pondera	Valier Public Library	23,719	3,082	5,810	0
Cascade	Wedsworth Memorial Library	9,455	700	1,133	230
<b>SubTotals:</b>		<b>167,017</b>	<b>36,261</b>	<b>45,508</b>	<b>5,979</b>
<b>1,199 and Under</b>					
Fergus	Denton Public Library	3,150	0	2,176	0
Granite	Drummond School Community Library	11,368	236	3,000	0
Madison	Madison Valley Public Library	21,970	1,500	4,000	0
Fergus	Moore Public Library	4,017	0	100	0
Petroleum	Petroleum County School-Community Libra	26,410	2,879	7,500	867
Prairie	Prairie County Library	15,754	2,370	4,004	0
Madison	Sheridan Public Library	6,856	2,522	2,113	0
	Twin Bridges Public Library	7,500	2,845	3,205	110
Wibaux	Wibaux Public Library	13,641	2,060	5,080	3,022
<b>SubTotals:</b>		<b>110,666</b>	<b>14,412</b>	<b>31,178</b>	<b>3,999</b>
<b>Statewide Totals:</b>		<b>7,995,301</b>	<b>2,236,402</b>	<b>1,870,670</b>	<b>66,071</b>

**Note: Joliet Community Library did not report and does not appear in report, reducing statewide service population from 900,302.**

# Expenditures by Service Area Population - SFY 2003

Continuing Education	Computer Services	Other Materials	Other Operating Expenses	Capital Outlay	Total Operating Expenses	Service Area Population	Per Capita
985	2,719	0	13,977	2,000	56,221	3,808	14.76
115	240	1,628	0	0	89,494	4,497	19.90
727	450	0	31,103	0	115,468	4,105	28.13
306	0	0	18,770	13,744	68,889	4,728	14.57
566	4,490	709	5,562	550	50,095	4,084	12.27
150	250	0	10,003	0	53,887	3,546	15.20
6,527	15,270	9,952	160,488	82,630	954,703	53,951	17.70
2,000-3,499							
300	200	3,575	3,117	23,456	23,516	2,259	10.41
0	4,309	0	6,566	4,000	47,599	3,444	13.82
431	450	0	7,560	0	58,485	2,017	29.00
1,476	1,267	8,804	13,205	2,036	101,490	2,837	35.77
1,268	468	647	6,471	0	52,285	2,710	19.29
0	0	1,137	10,891	0	35,934	2,269	15.84
1,000	2,000	575	3,050	1,000	51,917	2,329	22.29
599	2,416	250	7,883	800	63,539	2,158	29.44
850	1,000	1,000	850	0	53,670	3,214	16.70
1,302	1,480	315	10,255	0	83,598	2,995	27.91
7,226	13,590	16,303	69,848	31,292	572,033	26,232	21.81
1,200-1,999							
0	180	0	5,333	2,784	29,316	1,522	19.26
119	600	0	2,643	0	19,168	1,401	13.68
0	336	0	3,287	0	16,761	1,360	12.32
0	2,196	0	7,776	4,000	24,881	1,599	15.56
510	451	1,500	1,480	500	20,225	1,279	15.81
300	1,532	3,696	10,374	0	32,291	1,977	16.33
64	1,578	0	5,858	0	48,569	1,858	26.14
0	6,306	0	28,169	0	64,630	1,932	33.45
800	150	0	0	0	13,711	1,713	8.00
632	469	0	1,538	0	28,961	1,691	17.13
608	2,200	0	18,088	0	53,507	1,926	27.78
0	55	0	15,462	0	27,035	1,708	15.83
3,033	16,053	5,196	100,008	7,284	379,055	19,966	18.99
1,199 and Under							
0	0	0	3,086	3,429	8,412	301	27.95
0	0	0	1,574	0	16,178	1,117	14.48
850	554	800	2,072	0	31,746	1,129	28.12
300	840	0	0	0	5,257	186	28.26
0	1,915	3,500	2,500	0	45,571	493	92.44
0	1,413	990	5,412	0	29,943	1,199	24.97
322	709	0	3,262	2,168	15,784	948	16.65
997	1,299	0	2,501	1,227	18,457	689	26.79
86	539	232	4,056	0	28,716	1,068	26.89
2,555	7,269	5,522	24,463	6,824	200,064	7,130	28.06
130,507	390,241	218,471	2,867,517	3,079,310	15,775,180	898,092	17.57

# Collection - SFY 2003

County	Library Name	Print	Print Serials	Audio	Video	E-Books	Elect	Serials	Databases	Other	Total	Serv Area	Pop	Per Cap
Beaverhead	Dillon Public Library	14,781	20	492	707	0	0	0	2	0	16,002	9,202	1,74	
Big Horn	Big Horn County Public Library	28,400	36	430	650	0	1	0	6	550	30,073	12,671	2.37	
Blaine	Blaine County Library	18,298	49	529	747	0	0	0	1	0	19,624	4,299	4.56	
	Harlem Public Library	11,728	62	146	249	0	0	0	1	0	12,186	2,710	4.50	
Broadwater	Broadwater School and Community Library	37,536	59	330	521	0	0	0	0	0	38,446	4,385	8.77	
Carbon	Bridger Public Library	11,950	47	936	27	0	0	0	0	0	12,960	2,259	5.74	
	Red Lodge Carnegie Library	12,500	140	400	130	0	0	0	2	0	13,172	5,083	2.59	
Carter	Ekalaka Public Library	7,450	0	115	553	0	0	0	3	0	8,121	1,360	5.97	
Cascade	Belt Public Library	6,100	15	87	39	0	0	0	50	0	6,291	1,522	4.13	
	Great Falls Public Library	140,915	317	2,729	2,504	0	0	0	4	80	146,549	77,128	1.90	
	Wedsworth Memorial Library	6,000	21	300	300	0	0	0	3	1	6,625	1,708	3.88	
Chouteau	Chouteau County Library	37,700	120	310	395	0	0	0	25	400	38,950	5,970	6.52	
Custer	Miles City Public Library	43,192	94	856	1,617	0	0	1	2	72	45,833	11,696	3.92	
Daniels	Daniels County Library	21,052	46	700	860	0	0	0	1	0	22,660	2,017	11.23	
Dawson	Glendive Public Library	23,378	64	1,127	1,010	0	0	0	0	28	25,607	9,059	2.83	
Deer Lodge	Hearst Free Library	31,596	86	755	1,062	0	1	0	3	0	33,503	9,417	3.56	
Fallon	Fallon County Library	19,824	38	529	554	0	0	0	0	0	20,945	2,837	7.38	
Fergus	Denton Public Library	4,500	0	105	65	0	0	0	0	48	4,718	301	15.67	
	Lewistown Public Library	30,466	65	1,145	743	0	0	0	1	2,000	34,420	11,406	3.02	
	Moore Public Library	8,055	0	101	226	0	0	0	0	0	8,382	186	45.06	
Flathead	Flathead County Library	193,214	257	4,857	3,886	3,994	0	0	2	4,624	210,834	74,471	2.83	
Gallatin	Belgrade Community Library	22,394	69	495	705	0	0	0	1	0	23,664	10,272	2.30	
	Bozeman Public Library	88,653	271	4,175	2,815	0	0	0	6	407	96,327	47,805	2.01	
	Manhattan Community Library	10,400	42	431	481	0	0	0	1	483	11,838	3,214	3.68	
	Three Forks Community Library	12,208	50	16	230	0	0	0	19	0	12,523	3,546	3.53	
	West Yellowstone Public Library	18,128	35	731	359	0	0	0	22	0	19,275	2,995	6.44	
Garfield	Garfield County Library	10,000	2	200	40	0	0	0	1	0	10,243	1,279	8.01	
Glacier	Glacier County Library	36,270	59	546	192	0	0	0	2	155	37,224	13,247	2.81	
Granite	Drummond School Community Library	4,350	22	50	100	0	0	0	0	0	4,522	1,117	4.05	
	Philipsburq Public Library	6,100	1	165	150	0	0	0	0	0	6,416	1,713	3.75	
Hill	Havre-Hill County Library	64,530	134	1,057	1,359	0	2	1	750	0	67,833	16,673	4.07	
Jefferson	Boulder Community Library	26,205	70	1,070	2,500	0	0	0	2	0	29,847	10,049	2.97	
Judith Basin	Judith Basin County Free Library	21,164	36	114	120	0	0	0	1	945	22,380	2,329	9.61	
Lake	Polson City Library	41,000	78	448	601	0	0	0	3	41	42,171	11,789	3.58	
	Ronan City Library	17,425	34	585	299	0	0	0	1	77	18,421	8,765	2.10	
	St Ignatius School-Community Library	15,000	15	200	900	0	0	0	0	0	16,115	5,953	2.71	
Lewis and Clark	Lewis and Clark Library	107,004	180	3,200	3,100	0	0	0	0	0	113,484	55,716	2.04	
Liberty	Liberty County Library	21,819	41	624	512	35	3	1	247	0	23,282	2,158	10.79	
Lincoln	Lincoln County Public Library	40,060	138	1,239	1,863	0	0	0	3	0	43,303	18,837	2.30	
Madison	Madison Valley Public Library	16,000	45	500	850	0	0	0	1	19	17,415	1,129	15.43	

# Collection - SFY 2003

County	Library Name	Print	Print Serials	Audio	Video	E-Books	Elect	Serials	Databases	Other	Total	Serv Area	Pop	Per Cap
Madison	Sheridan Public Library	8,700	120	250	50	0	0	0	0	30	9,150	948	9.65	
	Thompson-Hickman County Library	10,589	28	110	500	0	1	2	2	3	11,233	4,084	2.75	
	Twin Bridges Public Library	8,127	12	136	398	0	1	0	0	1	8,675	689	12.59	
McCone	George McCone Memorial County Library	18,565	33	97	424	0	0	2	2	16	19,137	1,977	9.68	
	Meagher County/City Library	19,584	2	493	49	0	0	0	0	0	20,128	1,932	10.42	
Meagher	Mineral County Public Library	33,475	33	482	761	0	0	1	0	0	34,752	3,884	8.95	
	Missoula Public Library	202,021	400	10,068	4,000	0	0	0	1,000	0	217,489	95,802	2.27	
Missoula	Roundup Community Library	22,237	45	810	522	0	1	2	454	0	24,071	4,497	5.35	
	Park	Livingston-Park County Public Library	48,150	220	1,335	1,439	0	3	4	346	0	51,497	15,694	3.28
Petroleum	Petroleum County School-Community Library	15,000	70	354	1,225	0	2	4	3,000	0	19,655	493	39.87	
	Phillips	Phillips County Library	24,382	34	250	400	0	0	1	0	25,067	4,601	5.45	
Pondera	Conrad Public Library	25,916	43	836	1,309	0	1	2	53	0	28,160	4,498	6.26	
	Valier Public Library	10,997	6	85	290	0	0	0	0	0	11,378	1,926	5.91	
Powder River	Henry A Malley Memorial Library	24,000	30	250	80	0	0	1	0	0	24,361	1,858	13.11	
	Powell	William K. Kohrs Memorial Library	22,000	48	1,117	1,058	0	0	2	275	0	24,500	7,180	3.41
Prairie	Prairie County Library	12,763	10	308	380	0	0	3	174	0	13,638	1,199	11.37	
	Ravalli	Bitterroot Public Library	33,706	62	641	540	0	0	0	0	34,949	23,844	1.47	
Richland	Darby Community Public Library	10,033	10	21	124	5	1	3	66	0	10,263	3,907	2.63	
	Roosevelt	North Valley Public Library	64,239	15	212	625	0	0	3	600	0	65,694	8,319	7.90
Rosebud	Sidney Public Library	25,248	66	2,022	1,326	3,830	0	3	11	0	32,506	9,667	3.36	
	Sanders	Roosevelt County Library	53,156	89	683	273	0	0	1	4	54,206	10,620	5.10	
Sheridan	Rosebud County Library	50,983	98	1,699	1,642	0	0	4	242	0	54,668	9,383	5.83	
	Silver Bow	Plains Public Library District	13,853	42	317	255	0	1	2	15	14,485	3,808	3.80	
Stillwater	Preston Town County Library	16,385	25	154	498	0	0	2	14	0	17,078	1,691	10.10	
	Sweet Grass	Thompson Falls Public Library	15,350	41	444	462	0	0	1	2	16,300	4,728	3.45	
Teton	Sheridan County Library	35,247	59	1,078	584	0	0	10	0	0	36,978	4,105	9.01	
	Toole	Butte-Silver Bow Public Library	95,777	227	2,425	2,218	0	0	4	1,266	0	101,917	34,606	2.95
Valley	Stillwater County Library	22,424	37	1,700	225	0	0	3	215	0	24,604	8,195	3.00	
	Wheatland	Carnegie Public Library	15,000	52	800	200	0	0	1	0	16,053	3,609	4.45	
Wibaux	Choteau Public Library	16,477	19	937	1,323	0	0	0	0	0	18,756	3,444	5.45	
	Yellowstone	Dutton Public Library	6,580	4	127	100	0	0	1	0	6,812	1,401	4.86	
Yellowstone	Fairfield Public Library	7,613	20	175	164	0	1	2	0	0	7,975	1,599	4.99	
	Parmy Billings Library	268,782	384	16,009	17,941	0	0	9	1,452	0	304,577	123,097	2.47	
Statewide Totals:		2,646,611	5,412	81,113	77,661	7,864	28	234	20,238	2,839,161	898,092	3.16		

Note: Joliet Community Library did not report and does not appear in report, reducing statewide service population from 900,302.

# Collection by Service Area Population - SFY 2003

County	Library Name	Books	Print Serials	Audio	Video	Other
<b>Over 25,000</b>						
Gallatin	Bozeman Public Library	88,653	271	4,175	2,815	407
Silver Bow	Butte-Silver Bow Public Library	95,777	227	2,425	2,218	1,266
Flathead	Flathead County Library	193,214	257	4,857	3,886	4,624
Cascade	Great Falls Public Library	140,915	317	2,729	2,504	80
Lewis and Clark	Lewis and Clark Library	107,004	180	3,200	3,100	0
Missoula	Missoula Public Library	202,021	400	10,068	4,000	1,000
Yellowstone	Parmly Billings Library	268,782	384	16,009	17,941	1,452
<b>Subtotals:</b>		<b>1,096,366</b>	<b>2,036</b>	<b>43,463</b>	<b>36,464</b>	<b>8,829</b>
<b>10,000-24,999</b>						
Gallatin	Belgrade Community Library	22,394	69	495	705	0
Big Horn	Big Horn County Public Library	28,400	36	430	650	550
Ravalli	Bitterroot Public Library	33,706	62	641	540	0
Jefferson	Boulder Community Library	26,205	70	1,070	2,500	0
Glacier	Glacier County Library	36,270	59	546	192	155
Hill	Havre-Hill County Library	64,530	134	1,057	1,359	750
Fergus	Lewistown Public Library	30,466	65	1,145	743	2,000
Lincoln	Lincoln County Public Library	40,060	138	1,239	1,863	0
Park	Livingston-Park County Public Library	48,150	220	1,335	1,439	346
Custer	Miles City Public Library	43,192	94	856	1,617	72
Lake	Polson City Library	41,000	78	448	601	41
Roosevelt	Roosevelt County Library	53,156	89	683	273	4
<b>Subtotals:</b>		<b>467,529</b>	<b>1,114</b>	<b>9,945</b>	<b>12,482</b>	<b>3,918</b>
<b>5,000-9,999</b>						
Chouteau	Chouteau County Library	37,700	120	310	395	400
Beaverhead	Dillon Public Library	14,781	20	492	707	0
Valley	Glasgow City-County Library	39,003	70	742	544	0
Dawson	Glendive Public Library	23,378	64	1,127	1,010	28
Deer Lodge	Hearst Free Library	31,596	86	755	1,062	0
Yellowstone	Laurel Public Library	16,959	25	210	700	50
Ravalli	North Valley Public Library	64,239	15	212	625	600
Carbon	Red Lodge Carnegie Library	12,500	140	400	130	0
Lake	Ronan City Library	17,425	34	585	299	77
Rosebud	Rosebud County Library	50,983	98	1,699	1,642	242
Richland	Sidney Public Library	25,248	66	2,022	1,326	11
Lake	St Ignatius School-Community Library	15,000	15	200	900	0
Stillwater	Stillwater County Library	22,424	37	1,700	225	215
Toole	Toole County Library	21,110	35	632	544	0
Powell	William K. Kohrs Memorial Library	22,000	48	1,117	1,058	275
<b>Subtotals:</b>		<b>414,346</b>	<b>873</b>	<b>12,203</b>	<b>11,167</b>	<b>1,898</b>
<b>3,500-4,999</b>						
Blaine	Blaine County Library	18,298	49	529	747	0
Broadwater	Broadwater School and Community Libra	37,536	59	330	521	0
Sweet Grass	Carnegie Public Library	15,000	52	800	200	0
Pondera	Conrad Public Library	25,916	43	836	1,309	53
Ravalli	Darby Community Public Library	10,033	10	21	124	66
Mineral	Mineral County Public Library	33,475	33	482	761	0

# Collection by Service Area Population - SFY 2003

E-Books	Electronic Serials	Databases	Total	Service Area	Per Capita
0	0	6	96,327	47,805	2.01
0	0	4	101,917	34,606	2.94
3,994	0	2	210,834	74,471	2.78
0	0	4	146,549	77,128	1.90
0	0	0	113,484	55,716	2.04
0	0	0	217,489	95,802	2.27
0	0	9	304,577	123,097	2.47
3,994	0	25	1,191,177	508,625	2.34
0	0	1	23,664	10,272	2.30
0	1	6	30,073	12,671	2.37
0	0	0	34,949	23,844	1.47
0	0	2	29,847	10,049	2.97
0	0	2	37,224	13,247	2.81
0	2	1	67,833	16,673	4.07
0	0	1	34,420	11,406	3.02
0	0	3	43,303	18,837	2.30
0	3	4	51,497	15,694	3.28
0	0	2	45,833	11,696	3.92
0	0	3	42,171	11,789	3.58
0	0	1	54,206	10,620	5.10
0	6	26	495,020	166,798	2.97
0	0	25	38,950	5,970	6.52
0	0	2	16,002	9,202	1.74
0	0	3	40,362	7,675	5.26
0	0	0	25,607	9,059	2.83
0	1	3	33,503	9,417	3.56
0	1	1	17,946	6,255	2.87
0	0	3	65,694	8,319	7.90
0	0	2	13,172	5,083	2.59
0	0	1	18,421	8,765	2.10
0	0	4	54,668	9,383	5.83
3,830	0	3	32,506	9,667	2.97
0	0	0	16,115	5,953	2.71
0	0	3	24,604	8,195	3.00
0	5	3	22,329	5,267	4.24
0	0	2	24,500	7,180	3.41
3,830	7	55	444,379	115,390	3.85
0	0	1	19,624	4,299	4.56
0	0	0	38,446	4,385	8.77
0	0	1	16,053	3,609	4.45
0	1	2	28,160	4,498	6.26
5	1	3	10,263	3,907	2.62
0	0	1	34,752	3,884	8.95



# Collection by Service Area Population - SFY 2003

County	Library Name	Books	Print Serials	Audio	Video	Other
Phillips	Phillips County Library	24,382	34	250	400	0
Sanders	Plains Public Library District	13,853	42	317	255	15
Musselshell	Roundup Community Library	22,237	45	810	522	454
Sheridan	Sheridan County Library	35,247	59	1,078	584	0
Sanders	Thompson Falls Public Library	15,350	41	444	462	2
Madison	Thompson-Hickman County Library	10,589	28	110	500	3
Gallatin	Three Forks Community Library	12,208	50	16	230	0
Subtotals:		274,124	545	6,023	6,615	593
2,000-3,499						
Carbon	Bridger Public Library	11,950	47	936	27	0
Teton	Choteau Public Library	16,477	19	937	1,323	0
Daniels	Daniels County Library	21,052	46	700	860	0
Fallon	Fallon County Library	19,824	38	529	554	0
Blaine	Harlem Public Library	11,728	62	146	249	0
Wheatland	Harlowton Public Library	11,015	35	233	63	0
Judith Basin	Judith Basin County Free Library	21,164	36	114	120	945
Liberty	Liberty County Library	21,819	41	624	512	247
Gallatin	Manhattan Community Library	10,400	42	431	481	483
	West Yellowstone Public Library	18,128	35	731	359	22
Subtotals:		163,557	401	5,381	4,548	1,697
1,200-1,999						
Cascade	Belt Public Library	6,100	15	87	39	0
Teton	Dutton Public Library	6,580	4	127	100	0
Carter	Ekalaka Public Library	7,450	0	115	553	0
Teton	Fairfield Public Library	7,613	20	175	164	0
Garfield	Garfield County Library	10,000	2	200	40	0
McCone	George McCone Memorial County Library	18,565	33	97	424	16
Powder River	Henry A Malley Memorial Library	24,000	30	250	80	0
Meagher	Meagher County/City Library	19,584	2	493	49	0
Granite	Philipsburg Public Library	6,100	1	165	150	0
Sanders	Preston Town County Library	16,385	25	154	498	14
Pondera	Valier Public Library	10,997	6	85	290	0
Cascade	Wedsworth Memorial Library	6,000	21	300	300	1
Subtotals:		139,374	159	2,248	2,687	31
1,199 and Under						
Fergus	Denton Public Library	4,500	0	105	65	48
Granite	Drummond School Community Library	4,350	22	50	100	0
Madison	Madison Valley Public Library	16,000	45	500	850	19
Fergus	Moore Public Library	8,055	0	101	226	0
Petroleum	Petroleum County School-Community Lib	15,000	70	354	1,225	3,000
Prairie	Prairie County Library	12,763	10	308	380	174
Madison	Sheridan Public Library	8,700	120	250	50	30
	Twin Bridges Public Library	8,127	12	136	398	1
Wibaux	Wibaux Public Library	13,820	5	46	404	0
Subtotals:		91,315	284	1,850	3,698	3,272
Statewide Totals:		2,646,611	5,412	81,113	77,661	20,238

Note: Joliet Community Library did not report and does not appear in report, reducing statewide service population from 900,302.

# Collection by Service Area Population - SFY 2003

E-Books	Electronic Serials	Databases	Total	Service Area	Per Capita
0	0	1	25,067	4,601	5.45
0	1	2	14,485	3,808	3.80
0	1	2	24,071	4,497	5.35
0	0	10	36,978	4,105	9.01
0	0	1	16,300	4,728	3.45
0	1	2	11,233	4,084	2.75
0	0	19	12,523	3,546	3.53
5	5	45	287,955	53,951	5.34
0	0	0	12,960	2,259	5.74
0	0	0	18,756	3,444	5.45
0	1	1	22,660	2,017	11.23
0	0	0	20,945	2,837	7.38
0	0	1	12,186	2,710	4.50
0	0	2	11,348	2,269	5.00
0	0	1	22,380	2,329	9.61
35	3	1	23,282	2,158	10.77
0	0	1	11,838	3,214	3.68
0	0	0	19,275	2,995	6.44
35	4	7	175,630	26,232	6.70
0	0	50	6,291	1,522	4.10
0	0	1	6,812	1,401	4.86
0	0	3	8,121	1,360	5.97
0	1	2	7,975	1,599	4.99
0	0	1	10,243	1,279	8.01
0	0	2	19,137	1,977	9.68
0	0	1	24,361	1,858	13.11
0	0	0	20,128	1,932	10.42
0	0	0	6,416	1,713	3.75
0	0	2	17,078	1,691	10.10
0	0	0	11,378	1,926	5.91
0	0	3	6,625	1,708	3.88
0	1	65	144,565	19,966	7.24
0	0	0	4,718	301	15.67
0	0	0	4,522	1,117	4.05
0	0	1	17,415	1,129	15.42
0	0	0	8,382	186	45.06
0	2	4	19,655	493	39.86
0	0	3	13,638	1,199	11.37
0	0	0	9,150	948	9.65
0	1	0	8,675	689	12.59
0	2	3	14,280	1,068	13.37
0	5	11	100,435	7,130	14.09
7,864	28	234	2,839,161	898,092	3.16

# Service Hours - SFY 2003

County	Library Name	Hours Open to Public		Annual Hours Open	Users	
		Main	Branch		Per Week	Per Year
Beaverhead	Dillon Public Library	38	0	1,976	320	16,640
Big Horn	Big Horn County Public Library	44	0	2,288	1,076	55,952
Blaine	Blaine County Library	31	0	1,612	120	6,240
	Harlem Public Library	25	0	1,300	76	3,952
Broadwater	Broadwater School and Community Libra	61	0	3,172	739	38,428
Carbon	Bridger Public Library	15	0	780	196	10,192
	Red Lodge Carnegie Library	45	0	2,340	280	14,560
Carter	Ekalaka Public Library	21	0	1,092	55	2,860
Cascade	Belt Public Library	20	0	1,040	220	11,440
	Great Falls Public Library	58	0	3,016	3,496	181,792
	Wedsworth Memorial Library	23	0	1,196	65	3,380
Chouteau	Chouteau County Library	47	46	4,836	620	32,240
Custer	Miles City Public Library	53	0	2,756	861	44,772
Daniels	Daniels County Library	43	0	2,236	425	22,100
Dawson	Glendive Public Library	45	12	2,964	703	36,556
Deer Lodge	Hearst Free Library	49	0	2,548	1,500	78,000
Fallon	Fallon County Library	49	0	2,548	331	17,212
Fergus	Denton Public Library	38	0	1,976	42	2,184
	Lewistown Public Library	48	0	2,496	1,450	75,400
	Moore Public Library	15	0	780	49	2,548
Flathead	Flathead County Library	53	126	9,308	6,489	337,428
Gallatin	Belgrade Community Library	46	0	2,392	675	35,100
	Bozeman Public Library	57	0	2,964	6,663	346,476
	Manhattan Community Library	30	0	1,560	600	31,200
	Three Forks Community Library	35	0	1,820	197	10,244
	West Yellowstone Public Library	38	0	1,976	262	13,624
Garfield	Garfield County Library	20	0	1,040	80	4,160
Glacier	Glacier County Library	38	32	3,640	800	41,600
Granite	Drummond School Community Library	40	0	2,080	35	1,820
	Philipsburg Public Library	15	0	780	85	4,420
Hill	Havre-Hill County Library	50	0	2,600	1,088	56,576
Jefferson	Boulder Community Library	30	30	3,120	800	41,600
Judith Basin	Judith Basin County Free Library	42	12	2,808	176	9,152
Lake	Polson City Library	42	0	2,184	1,045	54,340
	Ronan City Library	38	0	1,976	560	29,120
	St Ignatius School-Community Library	42	0	2,184	200	10,400
Lewis and Clark	Lewis and Clark Library	62	60	6,344	4,543	236,236
Liberty	Liberty County Library	38	0	1,976	183	9,516
Lincoln	Lincoln County Public Library	48	60	5,616	1,703	88,556
Madison	Madison Valley Public Library	43	0	2,236	190	9,880

# Service Hours - SFY 2003

County	Library Name	Hours Open to Public		Annual Hours Open	Users	
		Main	Branch		Per Week	Per Year
Madison	Sheridan Public Library	40	0	2,080	194	10,088
	Thompson-Hickman County Library	32	0	1,664	300	15,600
	Twin Bridges Public Library	40	0	2,080	132	6,864
McCone	George McCone Memorial County Library	20	0	1,040	98	5,096
Meagher	Meagher County/City Library	30	0	1,560	493	25,636
Mineral	Mineral County Public Library	30	13	2,236	210	10,920
Missoula	Missoula Public Library	64	20	4,368	5,808	302,016
Musselshell	Roundup Community Library	53	0	2,756	1,446	75,192
Park	Livingston-Park County Public Library	49	0	2,548	1,329	69,108
Petroleum	Petroleum County School-Community Lib	47	0	2,444	180	9,360
Phillips	Phillips County Library	38	11	2,548	70	3,640
Pondera	Conrad Public Library	38	0	1,976	341	17,732
	Valier Public Library	30	0	1,560	91	4,732
Powder River	Henry A Malley Memorial Library	35	0	1,820	150	7,800
Powell	William K. Kohrs Memorial Library	31	0	1,612	333	17,316
Prairie	Prairie County Library	16	0	832	71	3,692
Ravalli	Bitterroot Public Library	37	0	1,924	972	50,544
	Darby Community Public Library	20	0	1,040	81	4,212
	North Valley Public Library	35	0	1,820	612	31,824
Richland	Sidney Public Library	49	0	2,548	352	18,304
Roosevelt	Roosevelt County Library	42	46	4,576	508	26,416
Rosebud	Rosebud County Library	40	38	4,056	592	30,784
Sanders	Plains Public Library District	30	0	1,560	350	18,200
	Preston Town County Library	20	0	1,040	168	8,736
	Thompson Falls Public Library	30	0	1,560	409	21,268
Sheridan	Sheridan County Library	51	0	2,652	184	9,568
Silver Bow	Butte-Silver Bow Public Library	51	0	2,652	2,225	115,700
Stillwater	Stillwater County Library	44	0	2,288	400	20,800
Sweet Grass	Carnegie Public Library	33	0	1,716	200	10,400
Teton	Choteau Public Library	29	0	1,508	225	11,700
	Dutton Public Library	18	0	936	33	1,716
	Fairfield Public Library	19	0	988	72	3,744
Toole	Toole County Library	36	18	2,808	550	28,600
Valley	Glasgow City-County Library	63	30	4,836	1,316	68,432
Wheatland	Harlowton Public Library	52	0	2,704	136	7,072
Wibaux	Wibaux Public Library	26	0	1,352	110	5,720
Yellowstone	Laurel Public Library	45	0	2,340	344	17,888
	Parmly Billings Library	63	0	3,276	7,269	377,988

TOTAL:

3,502,304

# Service Hours by Service Area Population-SFY 2003

County	Library Name	Hours Open		Annual Hours Open	Users	
		Main	Branch		Per Week	Per Year
Over 25,000						
Gallatin	Bozeman Public Library	57	0	2,964	6,663	346,476
Silver Bow	Butte-Silver Bow Public Library	51	0	2,652	2,225	115,700
Flathead	Flathead County Library	53	126	9,308	6,489	337,428
Cascade	Great Falls Public Library	58	0	3,016	3,496	181,792
Lewis and Clark	Lewis and Clark Library	62	60	6,344	4,543	236,236
Missoula	Missoula Public Library	64	20	4,368	5,808	302,016
Yellowstone	Parmlly Billings Library	63	0	3,276	7,269	377,988
Subtotal						1,897,636
10,000-24,999						
Gallatin	Belgrade Community Library	46	0	2,392	675	35,100
Big Horn	Big Horn County Public Library	44	0	2,288	1,076	55,952
Ravalli	Bitterroot Public Library	37	0	1,924	972	50,544
Jefferson	Boulder Community Library	30	30	3,120	800	41,600
Glacier	Glacier County Library	38	32	3,640	800	41,600
Hill	Havre-Hill County Library	50	0	2,600	1,088	56,576
Fergus	Lewistown Public Library	48	0	2,496	1,450	75,400
Lincoln	Lincoln County Public Library	48	60	5,616	1,703	88,556
Park	Livingston-Park County Public Library	49	0	2,548	1,329	69,108
Custer	Miles City Public Library	53	0	2,756	861	44,772
Lake	Polson City Library	42	0	2,184	1,045	54,340
Roosevelt	Roosevelt County Library	42	46	4,576	508	26,416
Subtotal						639,964
5,000-9,999						
Chouteau	Chouteau County Library	47	46	4,836	620	32,240
Beaverhead	Dillon Public Library	38	0	1,976	320	16,640
Valley	Glasgow City-County Library	63	30	4,836	1,316	68,432
Dawson	Glendive Public Library	45	12	2,964	703	36,556
Deer Lodge	Hearst Free Library	49	0	2,548	1,500	78,000
Yellowstone	Laurel Public Library	45	0	2,340	344	17,888
Ravalli	North Valley Public Library	35	0	1,820	612	31,824
Carbon	Red Lodge Carnegie Library	45	0	2,340	280	14,560
Lake	Ronan City Library	38	0	1,976	560	29,120
Rosebud	Rosebud County Library	40	38	4,056	592	30,784
Richland	Sidney Public Library	49	0	2,548	352	18,304
Lake	St Ignatius School-Community Library	42	0	2,184	200	10,400
Stillwater	Stillwater County Library	44	0	2,288	400	20,800
Toole	Toole County Library	36	18	2,808	550	28,600
Powell	William K. Kohrs Memorial Library	31	0	1,612	333	17,316
Subtotal						451,464
3,500-4,999						
Blaine	Blaine County Library	31	0	1,612	120	6,240
Broadwater	Broadwater School and Community Library	61	0	3,172	739	38,428
Sweet Grass	Carnegie Public Library	33	0	1,716	200	10,400
Pondera	Conrad Public Library	38	0	1,976	341	17,732
Ravalli	Darby Community Public Library	20	0	1,040	81	4,212
Mineral	Mineral County Public Library	30	13	2,236	210	10,920

# Service Hours by Service Area Population-SFY 2003

County	Library Name	Hours Open		Annual Hours Open	Users		
		Main	Branch		Per Week	Per Year	
Phillips	Phillips County Library	38	11	2,548	70	3,640	
Sanders	Plains Public Library District	30	0	1,560	350	18,200	
Musselshell	Roundup Community Library	53	0	2,756	1,446	75,192	
Sheridan	Sheridan County Library	51	0	2,652	184	9,568	
Sanders	Thompson Falls Public Library	30	0	1,560	409	21,268	
Madison	Thompson-Hickman County Library	32	0	1,664	300	15,600	
Gallatin	Three Forks Community Library	35	0	1,820	197	10,244	
Subtotal						241,644	
2,000-3,499							
Carbon	Bridger Public Library	15	0	780	196	10,192	
Teton	Choteau Public Library	29	0	1,508	225	11,700	
Daniels	Daniels County Library	43	0	2,236	425	22,100	
Fallon	Fallon County Library	49	0	2,548	331	17,212	
Blaine	Harlem Public Library	25	0	1,300	76	3,952	
Wheatland	Harlowton Public Library	52	0	2,704	136	7,072	
Judith Basin	Judith Basin County Free Library	42	12	2,808	176	9,152	
Liberty	Liberty County Library	38	0	1,976	183	9,516	
Gallatin	Manhattan Community Library	30	0	1,560	600	31,200	
	West Yellowstone Public Library	38	0	1,976	262	13,624	
Subtotal						135,720	
1,200-1,999							
Cascade	Belt Public Library	20	0	1,040	220	11,440	
Teton	Dutton Public Library	18	0	936	33	1,716	
Carter	Ekalaka Public Library	21	0	1,092	55	2,860	
Teton	Fairfield Public Library	19	0	988	72	3,744	
Garfield	Garfield County Library	20	0	1,040	80	4,160	
McCone	George McCone Memorial County Library	20	0	1,040	98	5,096	
Powder River	Henry A Malley Memorial Library	35	0	1,820	150	7,800	
Meagher	Meagher County/City Library	30	0	1,560	493	25,636	
Granite	Philipsburg Public Library	15	0	780	85	4,420	
Sanders	Preston Town County Library	20	0	1,040	168	8,736	
Pondera	Valier Public Library	30	0	1,560	91	4,732	
Cascade	Wedsworth Memorial Library	23	0	1,196	65	3,380	
Subtotal						83,720	
1,199 and Under							
Fergus	Denton Public Library	38	0	1,976	42	2,184	
Granite	Drummond School Community Library	40	0	2,080	35	1,820	
Madison	Madison Valley Public Library	43	0	2,236	190	9,880	
Fergus	Moore Public Library	15	0	780	49	2,548	
Petroleum	Petroleum County School-Community Library	47	0	2,444	180	9,360	
Prairie	Prairie County Library	16	0	832	71	3,692	
Madison	Sheridan Public Library	40	0	2,080	194	10,088	
	Twin Bridges Public Library	40	0	2,080	132	6,864	
Wibaux	Wibaux Public Library	26	0	1,352	110	5,720	
Subtotal						52,156	
TOTAL						3,502,304	

# Circulation - SFY 2003

County	Library Name	Service Area Pop	Reference Transaction		Annual Circulation		Per Capita Circ
			Weekly	Annual	Juvenile	Non-Juvenile	
Beaverhead	Dillon Public Library	9,202	42	2,184	13,934	17,804	31,738 3.45
Big Horn	Big Horn County Public Library	12,671	225	11,700	3,904	8,255	12,159 0.96
Blaine	Blaine County Library	4,299	15	780	6,457	14,634	21,091 4.91
	Harlem Public Library	2,710	10	520	7,630	9,069	16,699 6.16
Broadwater	Broadwater School and Community Library	4,385	125	6,500	20,524	11,368	31,892 7.27
Carbon	Bridger Public Library	2,259	159	8,268	6,842	11,177	18,019 7.98
	Red Lodge Carnegie Library	5,083	50	2,600	13,340	18,926	32,266 6.35
Carter	Ekalaka Public Library	1,360	20	1,040	1,643	3,404	5,047 3.71
Cascade	Belt Public Library	1,522	15	780	2,293	7,564	9,857 6.48
	Great Falls Public Library	77,128	347	18,044	143,502	240,705	384,207 4.98
	Wedsworth Memorial Library	1,708	50	2,600	0	13,081	13,081 7.66
Chouteau	Chouteau County Library	5,970	82	4,264	31,015	45,825	76,840 12.87
Custer	Miles City Public Library	11,696	50	2,600	14,782	25,660	40,442 3.46
Daniels	Daniels County Library	2,017	75	3,900	5,600	16,010	21,610 10.71
Dawson	Glendive Public Library	9,059	40	2,080	10,278	27,788	38,066 4.20
Deer Lodge	Hearst Free Library	9,417	170	8,840	10,481	22,500	32,981 3.50
Fallon	Fallon County Library	2,837	24	1,248	6,738	12,003	18,741 6.61
Fergus	Denton Public Library	301	2	104	2,300	3,600	5,900 19.60
	Lewistown Public Library	11,406	125	6,500	50,000	50,781	100,781 8.84
	Moore Public Library	186	41	2,132	709	1,031	1,740 9.35
Flathead	Flathead County Library	74,471	755	39,260	123,577	297,921	421,498 5.66
Gallatin	Belgrade Community Library	10,272	62	3,224	17,923	20,498	38,421 3.74
	Bozeman Public Library	47,805	866	45,032	181,472	297,605	479,077 10.02
	Manhattan Community Library	3,214	100	5,200	4,991	12,412	17,403 5.41
	Three Forks Community Library	3,546	12	624	4,879	9,423	14,302 4.03
	West Yellowstone Public Library	2,995	11	572	2,491	5,695	8,186 2.73
Garfield	Garfield County Library	1,279	10	520	1,800	2,300	4,100 3.21
Glacier	Glacier County Library	13,247	45	2,340	20,255	21,348	41,603 3.14
Granite	Drummond School Community Library	1,117	6	312	3,870	800	4,670 4.18
	Phillipsburg Public Library	1,713	10	520	600	3,600	4,200 2.45
Hill	Havre-Hill County Library	16,673	46	2,392	22,377	67,617	89,994 5.40
Jefferson	Boulder Community Library	10,049	168	8,736	16,852	20,114	36,966 3.68
Judith Basin	Judith Basin County Free Library	2,329	15	780	4,374	10,791	15,165 6.51
Lake	Polson City Library	11,789	105	5,460	21,156	57,571	78,727 6.68
	Ronan City Library	8,765	60	3,120	5,874	19,471	25,345 2.89
	St Ignatius School-Community Library	5,953	75	3,900	4,150	2,911	7,061 1.19
Lewis and Clark	Lewis and Clark Library	55,716	169	8,788	111,548	216,536	328,084 5.89
Liberty	Liberty County Library	2,158	72	3,744	4,675	18,075	22,750 10.54
Lincoln	Lincoln County Public Library	18,837	90	4,680	20,904	75,676	96,580 5.13
Madison	Madison Valley Public Library	1,129	40	2,080	7,674	12,000	19,674 17.43
	Sheridan Public Library	948	25	1,300	3,569	6,578	10,147 10.70

# Circulation - SFY 2003

County	Library Name	Service Area Pop	Reference Transaction		Annual Circulation		Per Capita Circ	
			Weekly	Annual	Juvenile	Non-Juvenile		
Madison	Thompson-Hickman County Library	4,084	807	41,964	3,256	10,366	13,622	3.34
	Twin Bridges Public Library	689	28	1,456	828	3,485	4,313	6.26
McCone	George McCone Memorial County Library	1,977	19	988	3,454	5,328	8,782	4.44
Meagher	Meagher County/City Library	1,932	45	2,340	5,203	11,547	16,750	8.67
Mineral	Mineral County Public Library	3,884	60	3,120	2,933	17,180	20,113	5.18
Missoula	Missoula Public Library	95,802	450	23,400	239,453	486,162	725,615	7.57
Musselshell	Roundup Community Library	4,497	82	4,264	2,059	13,443	15,502	3.45
Park	Livingston-Park County Public Library	15,694	200	10,400	30,285	70,663	100,948	6.43
Petroleum	Petroleum County School-Community Library	493	25	1,300	4,200	3,600	7,800	15.82
Phillips	Phillips County Library	4,601	12	624	5,269	14,271	19,540	4.25
Pondera	Conrad Public Library	4,498	25	1,300	13,991	19,191	33,182	7.38
	Valier Public Library	1,926	16	832	0	7,463	7,463	3.87
Powder River	Henry A Malley Memorial Library	1,858	30	1,560	4,548	8,404	12,952	6.97
Powell	William K. Kohrs Memorial Library	7,180	25	1,300	0	27,850	27,850	3.88
Prairie	Prairie County Library	1,199	15	780	1,686	6,390	8,076	6.74
Ravalli	Bitterroot Public Library	23,844	140	7,280	25,344	45,056	70,400	2.95
	Darby Community Public Library	3,907	15	780	488	1,138	1,626	0.42
	North Valley Public Library	8,319	71	3,692	19,500	58,950	78,450	9.43
Richland	Sidney Public Library	9,667	78	4,056	24,635	38,009	62,644	6.48
Roosevelt	Roosevelt County Library	10,620	26	1,352	11,192	35,572	46,764	4.40
Rosebud	Rosebud County Library	9,383	55	2,860	20,150	42,869	63,019	6.72
Sanders	Plains Public Library District	3,808	179	9,308	5,450	15,169	20,619	5.41
	Preston Town County Library	1,691	16	832	931	8,690	9,621	5.69
	Thompson Falls Public Library	4,728	86	4,472	4,821	18,437	23,258	4.92
Sheridan	Sheridan County Library	4,105	40	2,080	3,904	19,445	23,349	5.69
Silver Bow	Butte-Silver Bow Public Library	34,606	440	22,880	26,617	70,064	96,681	2.79
Stillwater	Stillwater County Library	8,195	130	6,760	10,263	21,195	31,458	3.84
Sweet Grass	Carnegie Public Library	3,609	25	1,300	6,084	12,233	18,317	5.08
Teton	Choteau Public Library	3,444	95	4,940	7,052	24,957	32,009	9.29
	Dutton Public Library	1,401	52	2,704	964	2,310	3,274	2.34
	Fairfield Public Library	1,599	3	156	3,787	4,253	8,040	5.03
Toole	Toole County Library	5,267	375	19,500	8,667	14,332	22,999	4.37
Valley	Glasgow City-County Library	7,675	48	2,496	9,123	27,402	36,525	4.76
Wheatland	Harlowton Public Library	2,269	45	2,340	1,935	4,899	6,834	3.01
Wibaux	Wibaux Public Library	1,068	35	1,820	2,806	2,729	5,535	5.18
Yellowstone	Laurel Public Library	6,255	30	1,560	14,013	21,020	35,033	5.60
	Parmly Billings Library	123,097	608	31,616	310,040	540,323	850,363	6.91
Statewide Totals:		898,092		459,680	1,771,914	3,474,522	5,246,436	5.84

Note: Joliet Community Library did not report and does not appear in report, reducing statewide service population from 900,302.



# Circulation by Service Area Population - SFY 2003

County	Library Name	Service Reference			Annual Circulation			Per Capita
		Area Pop	Transaction Weekly	Annual	Juvenile	Non-Juvenile	Total	
<b>Over 25,000</b>								
Gallatin	Bozeman Public Library	47,805	866	45,032	181,472	297,605	479,077	10.02
Silver Bow	Butte-Silver Bow Public Library	34,606	440	22,880	26,617	70,064	96,681	2.79
Flathead	Flathead County Library	74,471	755	39,260	123,577	297,921	421,498	5.66
Cascade	Great Falls Public Library	77,128	347	18,044	143,502	240,705	384,207	4.98
Lewis and Clark	Lewis and Clark Library	55,716	169	8,788	111,548	216,536	328,084	5.89
Missoula	Missoula Public Library	95,802	450	23,400	239,453	486,162	725,615	7.57
Yellowstone	Parmly Billings Library	123,097	608	31,616	310,040	540,323	850,363	6.91
<b>Subtotals</b>		<b>508,625</b>		<b>189,020</b>	<b>1,136,209</b>	<b>2,149,316</b>	<b>3,285,525</b>	<b>6.46</b>
<b>10,000-24,999</b>								
Gallatin	Belgrade Community Library	10,272	62	3,224	17,923	20,498	38,421	3.74
Big Horn	Big Horn County Public Library	12,671	225	11,700	3,904	8,255	12,159	0.96
Ravalli	Bitterroot Public Library	23,844	140	7,280	25,344	45,056	70,400	2.95
Jefferson	Boulder Community Library	10,049	168	8,736	16,852	20,114	36,966	3.68
Glacier	Glacier County Library	13,247	45	2,340	20,255	21,348	41,603	3.14
Hill	Havre-Hill County Library	16,673	46	2,392	22,377	67,617	89,994	5.40
Fergus	Lewistown Public Library	11,406	125	6,500	50,000	50,781	100,781	8.84
Lincoln	Lincoln County Public Library	18,837	90	4,680	20,904	75,676	96,580	5.13
Park	Livingston-Park County Public Library	15,694	200	10,400	30,285	70,663	100,948	6.43
Custer	Miles City Public Library	11,696	50	2,600	14,782	25,660	40,442	3.46
Lake	Polson City Library	11,789	105	5,460	21,156	57,571	78,727	6.68
Roosevelt	Roosevelt County Library	10,620	26	1,352	11,192	35,572	46,764	4.40
<b>Subtotals</b>		<b>166,798</b>		<b>66,664</b>	<b>254,974</b>	<b>498,811</b>	<b>753,785</b>	<b>4.52</b>
<b>5,000-9,999</b>								
Chouteau	Chouteau County Library	5,970	82	4,264	31,015	45,825	76,840	12.87
Beaverhead	Dillon Public Library	9,202	42	2,184	13,934	17,804	31,738	3.45
Valley	Glasgow City-County Library	7,675	48	2,496	9,123	27,402	36,525	4.76
Dawson	Glendive Public Library	9,059	40	2,080	10,278	27,788	38,066	4.20
Deer Lodge	Hearst Free Library	9,417	170	8,840	10,481	22,500	32,981	3.50
Yellowstone	Laurel Public Library	6,255	30	1,560	14,013	21,020	35,033	5.60
Ravalli	North Valley Public Library	8,319	71	3,692	19,500	58,950	78,450	9.43
Carbon	Red Lodge Carnegie Library	5,083	50	2,600	13,340	18,926	32,266	6.35
Lake	Ronan City Library	8,765	60	3,120	5,874	19,471	25,345	2.89
Rosebud	Rosebud County Library	9,383	55	2,860	20,150	42,869	63,019	6.72
Richland	Sidney Public Library	9,667	78	4,056	24,635	38,009	62,644	6.48
Lake	St Ignatius School-Community Library	5,953	75	3,900	4,150	2,911	7,061	1.19
Stillwater	Stillwater County Library	8,195	130	6,760	10,263	21,195	31,458	3.84
Toole	Toole County Library	5,267	375	19,500	8,667	14,332	22,999	4.37
Powell	William K. Kohrs Memorial Library	7,180	25	1,300	0	27,850	27,850	3.88
<b>Subtotals</b>		<b>115,390</b>		<b>69,212</b>	<b>195,423</b>	<b>406,852</b>	<b>602,275</b>	<b>5.22</b>
<b>3,500-4,999</b>								
Blaine	Blaine County Library	4,299	15	780	6,457	14,634	21,091	4.91
Broadwater	Broadwater School and Community Library	4,385	125	6,500	20,524	11,368	31,892	7.27
Sweet Grass	Carnegie Public Library	3,609	25	1,300	6,084	12,233	18,317	5.08
Pondera	Conrad Public Library	4,498	25	1,300	13,991	19,191	33,182	7.38
Ravalli	Darby Community Public Library	3,907	15	780	488	1,138	1,626	0.42
Mineral	Mineral County Public Library	3,884	60	3,120	2,933	17,180	20,113	5.18

# Circulation by Service Area Population - SFY 2003

County	Library Name	Service Reference			Annual Circulation			Per Capita
		Area Pop	Transaction Weekly	Annual	Juvenile	Non-Juvenile	Total	
Phillips	Phillips County Library	4,601	12	624	5,269	14,271	19,540	4.25
Sanders	Plains Public Library District	3,808	179	9,308	5,450	15,169	20,619	5.41
Musselshell	Roundup Community Library	4,497	82	4,264	2,059	13,443	15,502	3.45
Sheridan	Sheridan County Library	4,105	40	2,080	3,904	19,445	23,349	5.69
Sanders	Thompson Falls Public Library	4,728	86	4,472	4,821	18,437	23,258	4.92
Madison	Thompson-Hickman County Library	4,084	807	41,964	3,256	10,366	13,622	3.34
Gallatin	Three Forks Community Library	3,546	12	624	4,879	9,423	14,302	4.03
Subtotals		53,951		77,116	80,115	176,298	256,413	4.75
2,000-3,499								
Carbon	Bridger Public Library	2,259	159	8,268	6,842	11,177	18,019	7.98
Teton	Choteau Public Library	3,444	95	4,940	7,052	24,957	32,009	9.29
Daniels	Daniels County Library	2,017	75	3,900	5,600	16,010	21,610	10.71
Fallon	Fallon County Library	2,837	24	1,248	6,738	12,003	18,741	6.61
Blaine	Harlem Public Library	2,710	10	520	7,630	9,069	16,699	6.16
Wheatland	Harlowton Public Library	2,269	45	2,340	1,935	4,899	6,834	3.01
Judith Basin	Judith Basin County Free Library	2,329	15	780	4,374	10,791	15,165	6.51
Liberty	Liberty County Library	2,158	72	3,744	4,675	18,075	22,750	10.54
Gallatin	Manhattan Community Library	3,214	100	5,200	4,991	12,412	17,403	5.41
	West Yellowstone Public Library	2,995	11	572	2,491	5,695	8,186	2.73
Subtotals		26,232		31,512	52,328	125,088	177,416	6.76
1,200-1,999								
Cascade	Belt Public Library	1,522	15	780	2,293	7,564	9,857	6.48
Teton	Dutton Public Library	1,401	52	2,704	964	2,310	3,274	2.34
Carter	Ekalaka Public Library	1,360	20	1,040	1,643	3,404	5,047	3.71
Teton	Fairfield Public Library	1,599	3	156	3,787	4,253	8,040	5.03
Garfield	Garfield County Library	1,279	10	520	1,800	2,300	4,100	3.21
McCone	George McCone Memorial County Library	1,977	19	988	3,454	5,328	8,782	4.44
Powder River	Henry A Malley Memorial Library	1,858	30	1,560	4,548	8,404	12,952	6.97
Meagher	Meagher County/City Library	1,932	45	2,340	5,203	11,547	16,750	8.67
Granite	Philipsburg Public Library	1,713	10	520	600	3,600	4,200	2.45
Sanders	Preston Town County Library	1,691	16	832	931	8,690	9,621	5.69
Pondera	Valier Public Library	1,926	16	832	0	7,463	7,463	3.87
Cascade	Wedsworth Memorial Library	1,708	50	2,600	0	13,081	13,081	7.66
Subtotals		19,966		14,872	25,223	77,944	103,167	5.17
1,199 and Under								
Fergus	Denton Public Library	301	2	104	2,300	3,600	5,900	19.60
Granite	Drummond School Community Library	1,117	6	312	3,870	800	4,670	4.18
Madison	Madison Valley Public Library	1,129	40	2,080	7,674	12,000	19,674	17.43
Fergus	Moore Public Library	186	41	2,132	709	1,031	1,740	9.35
Petroleum	Petroleum County School-Community Library	493	25	1,300	4,200	3,600	7,800	15.82
Prairie	Prairie County Library	1,199	15	780	1,686	6,390	8,076	6.74
Madison	Sheridan Public Library	948	25	1,300	3,569	6,578	10,147	10.70
	Twin Bridges Public Library	689	28	1,456	828	3,485	4,313	6.26
Wibaux	Wibaux Public Library	1,068	35	1,820	2,806	2,729	5,535	5.18
Subtotals		7,130		11,284	27,642	40,213	67,855	9.52
Statewide Totals:		898,092		459,680	1,771,914	3,474,522	5,246,436	5.84

Note: Joliet Community Library did not report and does not appear in report, reducing statewide service population from 900,302.

# Programs - SFY 2003

County	Library Name	Programs Offered				Program Attendance			
		Children	Young Adults	Adults	Total	Children	Young Adults	Adults	Total
Beaverhead	Dillon Public Library	28	4	79	111	1,425	45	497	1,967
Big Horn	Big Horn County Public Library	62	0	4	66	1,300	0	64	1,364
Blaine	Blaine County Library	39	0	2	41	949	0	263	1,212
	Harlem Public Library	36	0	4	40	280	0	76	356
Broadwater	Broadwater School and Community Library	40	3	17	60	1,067	907	527	2,501
Carbon	Bridger Public Library	46	0	0	46	664	0	0	664
	Red Lodge Carnegie Library	60	0	20	80	1,000	0	600	1,600
Carter	Ekalaka Public Library	40	7	7	54	280	60	90	430
Cascade	Belt Public Library	15	0	3	18	335	0	60	395
	Great Falls Public Library	187	4	70	261	8,438	103	2,683	11,224
	Wedsworth Memorial Library	40	6	11	57	400	20	25	445
Chouteau	Chouteau County Library	112	15	33	160	1,600	45	1,025	2,670
Custer	Miles City Public Library	183	3	15	201	3,251	87	302	3,640
Daniels	Daniels County Library	60	2	18	80	1,389	69	138	1,596
Dawson	Glendive Public Library	101	0	18	119	2,137	0	1,134	3,271
Deer Lodge	Hearst Free Library	25	12	20	57	2,000	150	450	2,600
Fallon	Fallon County Library	41	0	7	48	798	0	41	839
Fergus	Denton Public Library	1	0	0	1	40	0	0	40
	Lewistown Public Library	158	7	94	259	3,997	408	1,272	5,677
	Moore Public Library	2	1	2	5	13	5	8	26
Flathead	Flathead County Library	313	0	8	321	8,676	0	377	9,053
Gallatin	Belgrade Community Library	138	2	41	181	4,253	18	925	5,196
	Bozeman Public Library	383	8	61	452	13,710	136	879	14,725
	Manhattan Community Library	59	14	8	81	983	295	433	1,711
	Three Forks Community Library	61	0	3	64	919	0	64	983
	West Yellowstone Public Library	12	0	5	17	266	0	100	366
Garfield	Garfield County Library	10	0	0	10	300	0	0	300
Glacier	Glacier County Library	184	0	24	208	2,624	0	168	2,792
Granite	Drummond School Community Library	1	0	1	2	20	0	10	30
	Philipsburg Public Library	1	0	1	2	10	0	12	22
Hill	Havre-Hill County Library	63	2	12	77	3,000	35	4,180	7,215
Jefferson	Boulder Community Library	66	0	20	86	859	0	280	1,139
Judith Basin	Judith Basin County Free Library	73	6	17	96	96	165	121	382
Lake	Polson City Library	166	2	53	221	4,218	58	2,757	7,033
	Ronan City Library	43	6	1	50	788	93	12	893
	St Ignatius School-Community Library	12	6	5	23	18	12	10	40
Lewis and Clark	Lewis and Clark Library	236	0	202	438	18,133	0	2,317	20,450
Liberty	Liberty County Library	24	0	12	36	211	0	135	346
Lincoln	Lincoln County Public Library	110	0	64	174	1,375	0	1,337	2,712
Madison	Madison Valley Public Library	56	4	22	82	1,207	114	473	1,794

# Programs - SFY 2003

County	Library Name	Programs Offered				Program Attendance			
		Children	Young Adults	Adults	Total	Children	Young Adults	Adults	Total
Madison	Sheridan Public Library	64	0	4	68	423	0	16	439
	Thompson-Hickman County Library	2	0	4	6	58	0	84	142
	Twin Bridges Public Library	13	0	1	14	60	0	20	80
McCone	George McCone Memorial County Library	33	1	0	34	200	10	0	210
Meagher	Meagher County/City Library	74	0	0	74	1,897	0	0	1,897
Mineral	Mineral County Public Library	3	0	1	4	28	0	7	35
Missoula	Missoula Public Library	272	0	40	312	8,959	0	800	9,759
Musselshell	Roundup Community Library	15	7	9	31	153	347	253	753
Park	Livingston-Park County Public Library	219	1	42	262	4,657	11	333	5,001
Petroleum	Petroleum County School-Community Library	40	0	0	40	4,000	40	40	4,080
Phillips	Phillips County Library	38	1	0	39	760	70	0	830
Pondera	Conrad Public Library	30	55	9	94	1,350	825	646	2,821
	Valier Public Library	24	0	0	24	515	0	0	515
Powder River	Henry A Malley Memorial Library	34	0	2	36	1,213	0	93	1,306
Powell	William K. Kohrs Memorial Library	29	0	36	65	318	0	528	846
Prairie	Prairie County Library	30	1	1	32	116	70	35	221
Ravalli	Bitterroot Public Library	34	0	13	47	2,343	0	504	2,847
	Darby Community Public Library	3	3	6	12	161	20	550	731
	North Valley Public Library	15	2	3	20	200	65	150	415
Richland	Sidney Public Library	80	1	5	86	1,485	13	158	1,656
Roosevelt	Roosevelt County Library	33	1	4	38	608	40	99	747
Rosebud	Rosebud County Library	270	9	51	330	2,474	353	1,199	4,026
Sanders	Plains Public Library District	3	1	0	4	56	7	0	63
	Preston Town County Library	1	0	1	2	46	0	14	60
	Thompson Falls Public Library	18	0	5	23	231	0	175	406
Sheridan	Sheridan County Library	28	0	3	31	533	0	100	633
Silver Bow	Butte-Silver Bow Public Library	108	8	4	120	3,217	122	190	3,529
Stillwater	Stillwater County Library	45	0	6	51	500	0	225	725
Sweet Grass	Carnegie Public Library	4	0	2	6	412	0	400	812
Teton	Choteau Public Library	48	0	5	53	600	0	60	660
	Dutton Public Library	1	0	0	1	8	0	0	8
	Fairfield Public Library	41	5	0	46	269	16	0	285
Toole	Toole County Library	48	0	0	48	515	0	0	515
Valley	Glasgow City-County Library	80	9	41	130	920	127	188	1,235
Wheatland	Harlowton Public Library	0	1	0	1	0	90	0	90
Wibaux	Wibaux Public Library	29	2	2	33	141	18	86	245
Yellowstone	Laurel Public Library	54	0	2	56	300	0	50	350
	Parmly Billings Library	305	18	33	356	14,652	210	2,217	17,079
Totals:		5,455	240	1,319	7,014	147,407	5,279	33,065	85,751

# Interlibrary Loans - SFY 2003

County	Library Name	Loaned			Borrowed		
		Instate	Outstate	Total	Instate	Outstate	Total
Beaverhead	Dillon Public Library	159	8	167	272	96	368
Big Horn	Big Horn County Public Library	235	26	261	264	100	364
Blaine	Blaine County Library	323	21	344	67	1	68
	Harlem Public Library	55	3	58	55	4	59
Broadwater	Broadwater School and Community Library	5	0	5	10	2	12
Carbon	Bridger Public Library	0	0	0	175	0	175
	Red Lodge Carnegie Library	6	24	30	300	100	400
Carter	Ekalaka Public Library	19	0	19	27	7	34
Cascade	Belt Public Library	2	0	2	17	0	17
	Great Falls Public Library	767	173	940	821	708	1,529
	Wedsworth Memorial Library	15	0	15	10	2	12
Chouteau	Chouteau County Library	118	10	128	115	29	144
Custer	Miles City Public Library	491	27	518	81	35	116
Daniels	Daniels County Library	72	4	76	153	49	202
Dawson	Glendive Public Library	203	40	243	219	70	289
Deer Lodge	Hearst Free Library	276	55	331	213	71	284
Fallon	Fallon County Library	242	40	282	410	125	535
Fergus	Denton Public Library	0	0	0	26	0	26
	Lewistown Public Library	282	45	327	256	158	414
	Moore Public Library	0	0	0	0	0	0
Flathead	Flathead County Library	1,461	474	1,935	1,012	981	1,993
Gallatin	Belgrade Community Library	126	0	126	91	0	91
	Bozeman Public Library	1,456	628	2,084	778	1,068	1,846
	Manhattan Community Library	3	0	3	65	0	65
	Three Forks Community Library	0	0	0	175	46	221
	West Yellowstone Public Library	35	2	37	65	19	84
Garfield	Garfield County Library	4	0	4	72	9	81
Glacier	Glacier County Library	100	7	107	160	9	169
Granite	Drummond School Community Library	3	1	4	4	2	6
	Philipsburg Public Library	3	1	4	94	24	118
Hill	Havre-Hill County Library	444	56	500	334	107	441
Jefferson	Boulder Community Library	113	1	114	655	220	875
Judith Basin	Judith Basin County Free Library	42	5	47	56	4	60
Lake	Polson City Library	152	13	165	281	184	465
	Ronan City Library	108	14	122	170	69	239
	St Ignatius School-Community Library	13	4	17	145	12	157
Lewis and Clark	Lewis and Clark Library	1,138	396	1,534	1,409	1,603	3,012
Liberty	Liberty County Library	314	36	350	163	0	163
Lincoln	Lincoln County Public Library	568	126	694	646	395	1,041
Madison	Madison Valley Public Library	159	17	176	200	78	278

# Interlibrary Loans - SFY 2003

County	Library Name	Loaned			Borrowed		
		Instate	Outstate	Total	Instate	Outstate	Total
Madison	Sheridan Public Library	0	0	0	146	0	146
	Thompson-Hickman County Library	5	0	5	149	11	160
	Twin Bridges Public Library	0	0	0	30	12	42
McCone	George McCone Memorial County Library	25	2	27	67	17	84
Meagher	Meagher County/City Library	27	2	29	132	22	154
Mineral	Mineral County Public Library	24	2	26	46	7	53
Missoula	Missoula Public Library	1,132	493	1,625	748	863	1,611
Musselshell	Roundup Community Library	48	0	48	163	17	180
Park	Livingston-Park County Public Library	186	46	232	321	368	689
Petroleum	Petroleum County School-Community Library	57	43	100	201	59	260
Phillips	Phillips County Library	24	1	25	129	22	151
Pondera	Conrad Public Library	117	7	124	284	17	301
	Valier Public Library	12	0	12	116	0	116
Powder River	Henry A Malley Memorial Library	32	0	32	184	56	240
Powell	William K. Kohrs Memorial Library	473	137	610	292	147	439
Prairie	Prairie County Library	40	7	47	157	12	169
Ravalli	Bitterroot Public Library	316	265	581	1,159	722	1,881
	Darby Community Public Library	0	0	0	0	0	0
	North Valley Public Library	32	28	60	400	30	430
Richland	Sidney Public Library	132	19	151	177	31	208
Roosevelt	Roosevelt County Library	230	5	235	264	111	375
Rosebud	Rosebud County Library	528	124	652	165	96	261
Sanders	Plains Public Library District	212	20	232	195	40	235
	Preston Town County Library	13	0	13	19	10	29
	Thompson Falls Public Library	70	8	78	230	147	377
Sheridan	Sheridan County Library	245	19	264	259	60	319
Silver Bow	Butte-Silver Bow Public Library	916	34	950	475	247	722
Stillwater	Stillwater County Library	15	5	20	584	37	621
Sweet Grass	Carnegie Public Library	100	6	106	120	10	130
Teton	Choteau Public Library	70	14	84	104	0	104
	Dutton Public Library	0	0	0	3	1	4
	Fairfield Public Library	14	0	14	62	14	76
Toole	Toole County Library	11	0	11	315	151	466
Valley	Glasgow City-County Library	412	40	452	248	78	326
Wheatland	Harlowton Public Library	0	0	0	21	11	32
Wibaux	Wibaux Public Library	171	22	193	61	23	84
Yellowstone	Laurel Public Library	53	6	59	50	3	53
	Parmly Billings Library	1,164	155	1,319	525	497	1,022
Totals		16,418	3,767	20,185	18,667	10,336	29,003

# Interlibrary Loans by Service Area Population-SFY 2003

County	Library Name	Loaned			Borrowed		
		Instate	Outstate	Total	Instate	Outstate	Total
<b>Over 25,000</b>							
Gallatin	Bozeman Public Library	1,456	628	2,084	778	1,068	1,846
Silver Bow	Butte-Silver Bow Public Library	916	34	950	475	247	722
Flathead	Flathead County Library	1,461	474	1,935	1,012	981	1,993
Cascade	Great Falls Public Library	767	173	940	821	708	1,529
Lewis and Clark	Lewis and Clark Library	1,138	396	1,534	1,409	1,603	3,012
Missoula	Missoula Public Library	1,132	493	1,625	748	863	1,611
Yellowstone	Parmly Billings Library	1,164	155	1,319	525	497	1,022
<b>Totals</b>		<b>8,034</b>	<b>2,353</b>	<b>10,387</b>	<b>5,768</b>	<b>5,967</b>	<b>11,735</b>
<b>10,000-24,999</b>							
Gallatin	Belgrade Community Library	126	0	126	91	0	91
Big Horn	Big Horn County Public Library	235	26	261	264	100	364
Ravalli	Bitterroot Public Library	316	265	581	1,159	722	1,881
Jefferson	Boulder Community Library	113	1	114	655	220	875
Glacier	Glacier County Library	100	7	107	160	9	169
Hill	Havre-Hill County Library	444	56	500	334	107	441
Fergus	Lewistown Public Library	282	45	327	256	158	414
Lincoln	Lincoln County Public Library	568	126	694	646	395	1,041
Park	Livingston-Park County Public Library	186	46	232	321	368	689
Custer	Miles City Public Library	491	27	518	81	35	116
Lake	Polson City Library	152	13	165	281	184	465
Roosevelt	Roosevelt County Library	230	5	235	264	111	375
<b>Totals</b>		<b>3,243</b>	<b>617</b>	<b>3,860</b>	<b>4,512</b>	<b>2,409</b>	<b>6,921</b>
<b>5,000-9,999</b>							
Chouteau	Chouteau County Library	118	10	128	115	29	144
Beaverhead	Dillon Public Library	159	8	167	272	96	368
Valley	Glasgow City-County Library	412	40	452	248	78	326
Dawson	Glendive Public Library	203	40	243	219	70	289
Deer Lodge	Hearst Free Library	276	55	331	213	71	284
Yellowstone	Laurel Public Library	53	6	59	50	3	53
Ravalli	North Valley Public Library	32	28	60	400	30	430
Carbon	Red Lodge Carnegie Library	6	24	30	300	100	400
Lake	Ronan City Library	108	14	122	170	69	239
Rosebud	Rosebud County Library	528	124	652	165	96	261
Richland	Sidney Public Library	132	19	151	177	31	208
Lake	St Ignatius School-Community Library	13	4	17	145	12	157
Stillwater	Stillwater County Library	15	5	20	584	37	621
Toole	Toole County Library	11	0	11	315	151	466
Powell	William K. Kohrs Memorial Library	473	137	610	292	147	439
<b>Totals</b>		<b>2,539</b>	<b>514</b>	<b>3,053</b>	<b>3,665</b>	<b>1,020</b>	<b>4,685</b>
<b>3,500-4,999</b>							
Blaine	Blaine County Library	323	21	344	67	1	68
Broadwater	Broadwater School and Community Library	5	0	5	10	2	12
Sweet Grass	Carnegie Public Library	100	6	106	120	10	130
Pondera	Conrad Public Library	117	7	124	284	17	301
Ravalli	Darby Community Public Library	0	0	0	0	0	0
Mineral	Mineral County Public Library	24	2	26	46	7	53

# Interlibrary Loans by Service Area Population-SFY 2003

County	Library Name	Loaned			Borrowed		
		Instate	Outstate	Total	Instate	Outstate	Total
Phillips	Phillips County Library	24	1	25	129	22	151
Sanders	Plains Public Library District	212	20	232	195	40	235
Musselshell	Roundup Community Library	48	0	48	163	17	180
Sheridan	Sheridan County Library	245	19	264	259	60	319
Sanders	Thompson Falls Public Library	70	8	78	230	147	377
Madison	Thompson-Hickman County Library	5	0	5	149	11	160
Gallatin	Three Forks Community Library	0	0	0	175	46	221
Totals		1,173	84	1,257	1,827	380	2,207
2,000-3,499							
Carbon	Bridger Public Library	0	0	0	175	0	175
Teton	Choteau Public Library	70	14	84	104	0	104
Daniels	Daniels County Library	72	4	76	153	49	202
Fallon	Fallon County Library	242	40	282	410	125	535
Blaine	Harlem Public Library	55	3	58	55	4	59
Wheatland	Harlowton Public Library	0	0	0	21	11	32
Judith Basin	Judith Basin County Free Library	42	5	47	56	4	60
Liberty	Liberty County Library	314	36	350	163	0	163
Gallatin	Manhattan Community Library	3	0	3	65	0	65
	West Yellowstone Public Library	35	2	37	65	19	84
Totals		833	104	937	1,267	212	1,479
1,200-1,999							
Cascade	Belt Public Library	2	0	2	17	0	17
Teton	Dutton Public Library	0	0	0	3	1	4
Carter	Ekalaka Public Library	19	0	19	27	7	34
Teton	Fairfield Public Library	14	0	14	62	14	76
Garfield	Garfield County Library	4	0	4	72	9	81
McCone	George McCone Memorial County Library	25	2	27	67	17	84
Powder River	Henry A Malley Memorial Library	32	0	32	184	56	240
Meagher	Meagher County/City Library	27	2	29	132	22	154
Granite	Philipsburg Public Library	3	1	4	94	24	118
Sanders	Preston Town County Library	13	0	13	19	10	29
Pondera	Valier Public Library	12	0	12	116	0	116
Cascade	Wedsworth Memorial Library	15	0	15	10	2	12
Totals		166	5	171	803	162	965
1,199 and Under							
Fergus	Denton Public Library	0	0	0	26	0	26
Granite	Drummond School Community Library	3	1	4	4	2	6
Madison	Madison Valley Public Library	159	17	176	200	78	278
Fergus	Moore Public Library	0	0	0	0	0	0
Petroleum	Petroleum County School-Community Library	57	43	100	201	59	260
Prairie	Prairie County Library	40	7	47	157	12	169
Madison	Sheridan Public Library	0	0	0	146	0	146
	Twin Bridges Public Library	0	0	0	30	12	42
Wibaux	Wibaux Public Library	171	22	193	61	23	84
Totals		430	90	520	825	186	1,011
Statewide Totals		16,418	3,767	20,185	18,667	10,336	29,003



# Library Facility Adequacy - SFY 2003

County	Library Name	ADA Assessment		For Population Served	
		Completed	Accessible Needs	Adequate	Needs
Beaverhead	Dillon Public Library	Y	Y	Y	
Big Horn	Big Horn County Public Library	Y	Y	Y	
Blaine	Blaine County Library	N	Y	Y	
	Harlem Public Library	N	N Major Remodeling	N	
Broadwater	Broadwater School and Community Library	Y	Y	Y	
Carbon	Bridger Public Library	N	N Major Remodeling	N	Build a New Library
	Red Lodge Carnegie Library	Y	Y	Y	
Carter	Ekalaka Public Library	N	N Minor Remodeling	Y	
Cascade	Belt Public Library	Y	Y	Y	
	Great Falls Public Library	Y	Y	Y	
	Wedsworth Memorial Library	Y	Y	Y	
Chouteau	Chouteau County Library	Y	Y	Y	
Custer	Miles City Public Library	Y	Y	N	Major Remodeling
Daniels	Daniels County Library	N	Y	Y	
Dawson	Glendive Public Library	Y	Y	Y	
Deer Lodge	Hearst Free Library	Y	Y	Y	
Fallon	Fallon County Library	N	Y	Y	
Fergus	Denton Public Library	Y	Y	Y	
	Lewistown Public Library	Y	Y	Y	
	Moore Public Library	N	Y	Y	
Flathead	Flathead County Library	Y	Y	N	Build a New Library
Gallatin	Belgrade Community Library	Y	Y	Y	
	Bozeman Public Library	Y	Y	N	Build a New Library
	Manhattan Community Library	N	N	N	Minor Remodeling
	Three Forks Community Library	N	Y	Y	
	West Yellowstone Public Library	N	Y	N	Build a New Library
Garfield	Garfield County Library	Y	Y	Y	
Glacier	Glacier County Library	Y	Y	Y	
Granite	Drummond School Community Library	N	N	N	
	Phillipsburg Public Library	N	Y	Y	
Hill	Havre-Hill County Library	Y	Y	Y	
Jefferson	Boulder Community Library	Y	Y	Y	
Judith Basin	Judith Basin County Free Library	Y	N Minor Remodeling	N	Minor Remodeling
Lake	Polson City Library	N	Y	Y	
	Ronan City Library	Y	N Minor Remodeling	Y	
	St Ignatius School-Community Library	Y	Y	Y	
Lewis and Clark	Lewis and Clark Library	N	Y	N	Major Remodeling
Liberty	Liberty County Library	Y	Y	Y	
Lincoln	Lincoln County Public Library	N	Y	Y	
Madison	Madison Valley Public Library	Y	Y	N	Major Remodeling

# Library Facility Adequacy - SFY 2003

County	Library Name	ADA Assessment		For Population Served	
		Completed	Accessible Needs	Adequate	Needs
Madison	Sheridan Public Library	Y	Y	Y	
	Thompson-Hickman County Library	Y	Y	N	Major Remodeling
	Twin Bridges Public Library	N	N	Major Remodeling	N Major Remodeling
McCone	George McCone Memorial County Library	Y	Y	Y	
Meagher	Meagher County/City Library	Y	Y	N	
Mineral	Mineral County Public Library	N	N	Build a New Library	N Build a New Library
Missoula	Missoula Public Library	Y	Y	Y	
Musselshell	Roundup Community Library	Y	Y	Y	
Park	Livingston-Park County Public Library	Y	N	Major Remodeling	N Major Remodeling
Petroleum	Petroleum County School-Community Library	Y	Y	Y	
Phillips	Phillips County Library	N	N	Major Remodeling	Y
Pondera	Conrad Public Library	Y	Y	Y	
	Valier Public Library	Y	Y	Y	
Powder River	Henry A Malley Memorial Library	Y	Y	Y	
Powell	William K. Kohrs Memorial Library	N	Y	Y	
Prairie	Prairie County Library	N	N	Minor Remodeling	Y
Ravalli	Bitterroot Public Library	Y	Y	N	Major Remodeling
	Darby Community Public Library	N	Y	N	Build a New Library
	North Valley Public Library	N	Y	Y	
Richland	Sidney Public Library	N	Y	N	Build a New Library
Roosevelt	Roosevelt County Library	Y	Y	N	Major Remodeling
Rosebud	Rosebud County Library	Y	N	Minor Remodeling	Y
Sanders	Plains Public Library District	Y	Y	N	Major Remodeling
	Preston Town County Library	Y	Y	Y	
	Thompson Falls Public Library	Y	Y	Y	
Sheridan	Sheridan County Library	N	Y	Y	
Silver Bow	Butte-Silver Bow Public Library	Y	Y	Y	
Stillwater	Stillwater County Library	Y	Y	Y	
Sweet Grass	Carnegie Public Library	N	N	Major Remodeling	Y
Teton	Choteau Public Library	Y	Y	Y	
	Dutton Public Library	N	N	Build a New Library	N Build a New Library
	Fairfield Public Library	N	Y	Y	
Toole	Toole County Library	N	Y	Y	
Valley	Glasgow City-County Library	N	Y	Y	
Wheatland	Harlowton Public Library	Y	Y	Y	
Wibaux	Wibaux Public Library	Y	Y	Y	
Yellowstone	Laurel Public Library	N	Y	N	Minor Remodeling
	Parmlly Billings Library	Y	Y	N	Build a New Library

# Automation - SFY 2003

County	Library Name	# of Com- puters	Online Full Text Database	Internet Terminals Staff	Public	Has LAN	Kind of Internet Access	Public Access Catalog	Library System Vendor and Product
Beaverhead	Dillon Public Library	7	9	2	7	Y	56K Frame Relay	Y	SIRSI Corporation Workflows
Big Horn	Big Horn County Public Library	16	14	5	14	Y	T1	Y	SIRSI Corporation Unicorn
Blaine	Blaine County Library	5	4	2	4	Y	256K DSL Modem	Y	epixtech, inc. Dynix
	Harlem Public Library	2	2	2	2	Y	256K DSL Modem	Y	epixtech, inc. Dynix
Broadwater	Broadwater School and Community Library	11	7	3	7	Y	T1	Y	Sagebrush Corporation Spectrum
Carbon	Bridger Public Library	2	0	1	2		56K Modem		
	Red Lodge Carnegie Library	5	3	1	5	Y	Satellite		Sagebrush Corporation Spectrum
Carter	Ekalaka Public Library	3	3	4	3		256K DSL Modem		Follett Software Company
Cascade	Belt Public Library	1	1	1	1		56K Modem		
	Great Falls Public Library	21	21	23	17	Y	1MB DSL Modem	Y	SIRSI Corporation Unicorn
	Wedsworth Memorial Library	2	2	1	2		56K Modem	Y	Sagebrush Corporation
Chouteau	Chouteau County Library	7	7	2	7	Y	512K DSL Modem		Sagebrush Corporation Spectrum
Custer	Miles City Public Library	6	6	6	6	Y	512K DSL Modem		SIRSI Corporation Unicorn
Daniels	Daniels County Library	3	2	1	2	Y	Other Type	Y	Sagebrush Corporation CIRC/CAT
Dawson	Glendive Public Library	9	9	4	9	Y	Cable Modem		Follett Software Company
Deer Lodge	Hearst Free Library	10	15	3	10	Y	Other Type	Y	SIRSI Corporation Unicorn
Fallon	Fallon County Library	6	8	4	5	Y	512K DSL Modem	Y	Follett Software Company

# Automation - SFY 2003

County	Library Name	# of Com-puters	Online Full Text Database	Internet Terminals Staff	Internet Public	Has LAN	Kind of Internet Access	Public Access Catalog	Library System Vendor and Product
Fergus	Denton Public Library	1	0	1	1		256K DSL Modem		
	Lewistown Public Library	13	10	7	7	Y	T1	Y	SIRSI Corporation Unicorn
	Moore Public Library	1	0	1	1		256K DSL Modem		
Flathead	Flathead County Library	39	24	27	24	Y	T1	Y	SIRSI Corporation Unicorn
Gallatin	Belgrade Community Library	11	6	2	10	Y	256K DSL Modem	Y	epixtech, inc. Dynix
	Bozeman Public Library	25	25	13	25		T1	Y	epixtech, inc. Dynix
	Manhattan Community Library	7	5	2	6	Y	T1	Y	Follett Software Company
	Three Forks Community Library	2	2	1	2	Y	MicroWave		
	West Yellowstone Public Library	6	5	3	5	Y	56K Frame Relay	Y	epixtech, inc. Dynix
Garfield	Garfield County Library	2	4	2	2	Y	256K DSL Modem		Sagebrush Corporation Spectrum
Glacier	Glacier County Library	8	6	4	6	Y	256K DSL Modem	Y	Follett Software Company
Granite	Drummond School Community Library	6	6	2	6		T1		CASPR Library Systems, Inc.
	Philipsburg Public Library	0	0	2	2		33.6 Modem		
Hill	Havre-Hill County Library	9	4	3	6	Y	T1	Y	Dynix, Inc. Dynix
Jefferson	Boulder Community Library	13	16	3	13	Y	T1	Y	SIRSI Corporation Unicorn
Judith Basin	Judith Basin County Free Library	3	5	2	3	Y	256K DSL Modem		Sagebrush Corporation Spectrum
Lake	Polson City Library	6	5	6	5	Y	512K DSL Modem	Y	SIRSI Corporation Unicorn
	Ronan City Library	6	9	3	6	Y	1MB DSL Modem	Y	Sagebrush Corporation Spectrum
	St Ignatius School-Community Library	12	25	3	12	Y	T1	Y	SIRSI Corporation Unicorn

# Automation - SFY 2003

County	Library Name	# of Com- puters	Online Full Text Database	Internet Terminals Staff	Public	Has LAN	Kind of Internet Access	Public Access Catalog	Library System Vendor and Product
Lewis and Clark	Lewis and Clark Library	7	0	30	28	Y	T1	Y	GEAC Plus
Liberty	Liberty County Library	7	6	2	7	Y	512K DSL Modem	Y	epixtech, inc. Dynix
Lincoln	Lincoln County Public Library	22	18	9	18	Y	T1	Y	Brodart Automation AmLib
Madison	Madison Valley Public Library	2	2	1	2	Y	512K DSL Modem		
	Sheridan Public Library	4	0	1	4		512K DSL Modem		
	Thompson-Hickman County Library	5	5	1	4	Y	256K DSL Modem		
	Twin Bridges Public Library	3	3	3	3	Y	512K DSL Modem		
McCone	George McCone Memorial County Library	2	3	1	2		56K Modem		
Meagher	Meagher County/City Library	5	5	2	5		256K DSL Modem		
Mineral	Mineral County Public Library	8	2	3	7	Y	512K DSL Modem	Y	Sagebrush Corporation Spectrum
Missoula	Missoula Public Library	22	22	28	15	Y	T1	Y	SIRSI Corporation Unicorn
Musselshell	Roundup Community Library	20	18	3	18	Y	56K Frame Relay		Follett Software Company
Park	Livingston-Park County Public Library	11	8	4	8	Y	256K Frame Relay	Y	Sagebrush Corporation
Petroleum	Petroleum County School-Community Library	4	4	2	4	Y	256K DSL Modem	Y	Sagebrush Corporation
Phillips	Phillips County Library	3	2	3	2	Y	256K DSL Modem	Y	Sagebrush Corporation Spectrum
Pondera	Conrad Public Library	6	4	4	4	Y	256K DSL Modem		Follett Software Company
	Valier Public Library	2	2	2	2		56K Modem	Y	Follett Software Company

# Automation - SFY 2003

County	Library Name	# of Com- puters	Online Full Text Database	Internet Terminals Staff	Public	Has LAN	Kind of Internet Access	Public Access Catalog	Library System Vendor and Product
Powder River	Henry A Malley Memorial Library	3	2	3	3		512K DSL Modem		
Powell	William K. Kohrs Memorial Library	8	4	1	4		T1	Y	Sagebrush Corporation Spectrum
Prairie	Prairie County Library	3	4	1	3	Y	256K DSL Modem		
Ravalli	Bitterroot Public Library	10	3	8	8	Y	Satellite	Y	SIRSI Corporation Unicorn
	Darby Community Public Library	3	3	3	3		56K Modem	Y	Gateway Software Corporation System
	North Valley Public Library	4	0	1	4	Y	MicroW ave		
Richland	Sidney Public Library	12	9	4	9	Y	512K DSL Modem	Y	Follett Software Company Catalog/Circ. Plus
Roosevelt	Roosevelt County Library	8	3	6	7	Y	256K DSL Modem	Y	Sagebrush Corporation Spectrum
Rosebud	Rosebud County Library	13	10	3	9	Y	512K DSL Modem		Sagebrush Corporation Spectrum
Sanders	Plains Public Library District	6	6	2	5	Y	256K DSL Modem	Y	SIRSI Corporation Unicorn
	Preston Town County Library	2	1	1	2	Y	56K Modem		
	Thompson Falls Public Library	6	5	2	5	Y	256K DSL Modem	Y	SIRSI Corporation Unicorn
Sheridan	Sheridan County Library	5	2	8	3	Y	T1	Y	Sagebrush Corporation Spectrum
Silver Bow	Butte-Silver Bow Public Library	14	8	7	9	Y	512K DSL Modem	Y	Sagebrush Corporation Spectrum
Stillwater	Stillwater County Library	4	5	3	3	Y	56K Modem	Y	Sagebrush Corporation Spectrum
Sweet Grass	Carnegie Public Library	3	3	2	3	Y	256K DSL Modem	Y	SIRSI Corporation Unicorn

# Automation - SFY 2003

County	Library Name	# of Com-puters	Online Full Text Database	Internet Terminals Staff	Internet Public	Has LAN	Kind of Internet Access	Public Access Catalog	Library System Vendor and Product
Teton	Choteau Public Library	8	7	2	6	Y	T1		Sagebrush Corporation Spectrum
	Dutton Public Library	2	0	1	2		MicroWave		
	Fairfield Public Library	5	4	2	4	Y	56K Modem	Y	Sagebrush Corporation
Toole	Toole County Library	3	4	2	3	Y	256K DSL Modem		Follett Software Company
Valley	Glasgow City-County Library	5	3	2	3	Y	256K DSL Modem		Winnebago Spectrum
Wheatland	Harlowton Public Library	4	5	1	4	Y	512K DSL Modem		
Wibaux	Wibaux Public Library	6	6	3	6	Y	256K DSL Modem	Y	Follett Software Company
Yellowstone	Laurel Public Library	7	7	3	7	Y	Cable Modem		
	Parmly Billings Library	38	25	31	17	Y	T1	Y	Dynix Horizon
Totals		601	503	353	510				

# Definitions, Abbreviations & Acronyms

- Median:** The value in a data set which divides the scores into two equal halves (i.e., an equal number of scores lie above and below it). If you have an odd number of values, the median is the middle value. If you have an even number of values, the median is the arithmetic mean of the two middle values. As a measure of central tendency, it is largely unaffected by extreme values.
- MLS:** Master of Library Science
- NA:** Not Available
- SFY:** State Fiscal Year July through June
- Sq:** Square
- w/:** With

## Contact Information:

Tristen Shinnick  
Phone: 406-444-3115  
Toll Free in Montana: 800-338-5087  
Fax: 406-444-0266  
E-Mail: [tshinnick@state.mt.us](mailto:tshinnick@state.mt.us)  
PO Box 201800  
Helena MT 59620-1800

Suzanne Reymer  
Phone: 406-255-0729  
Toll Free in Montana: 888-826-0837  
Fax: 406-255-0732  
E-Mail: [sreymer@uswest.net](mailto:sreymer@uswest.net)  
Parmly Billings Library  
510 North Broadway  
Billings MT 59101-1196





This publication is available in alternative formats upon request. One hundred and fifty copies of this newsletter were published at state expense. Publication and distribution expense information are on file with the Montana Department of Administration.