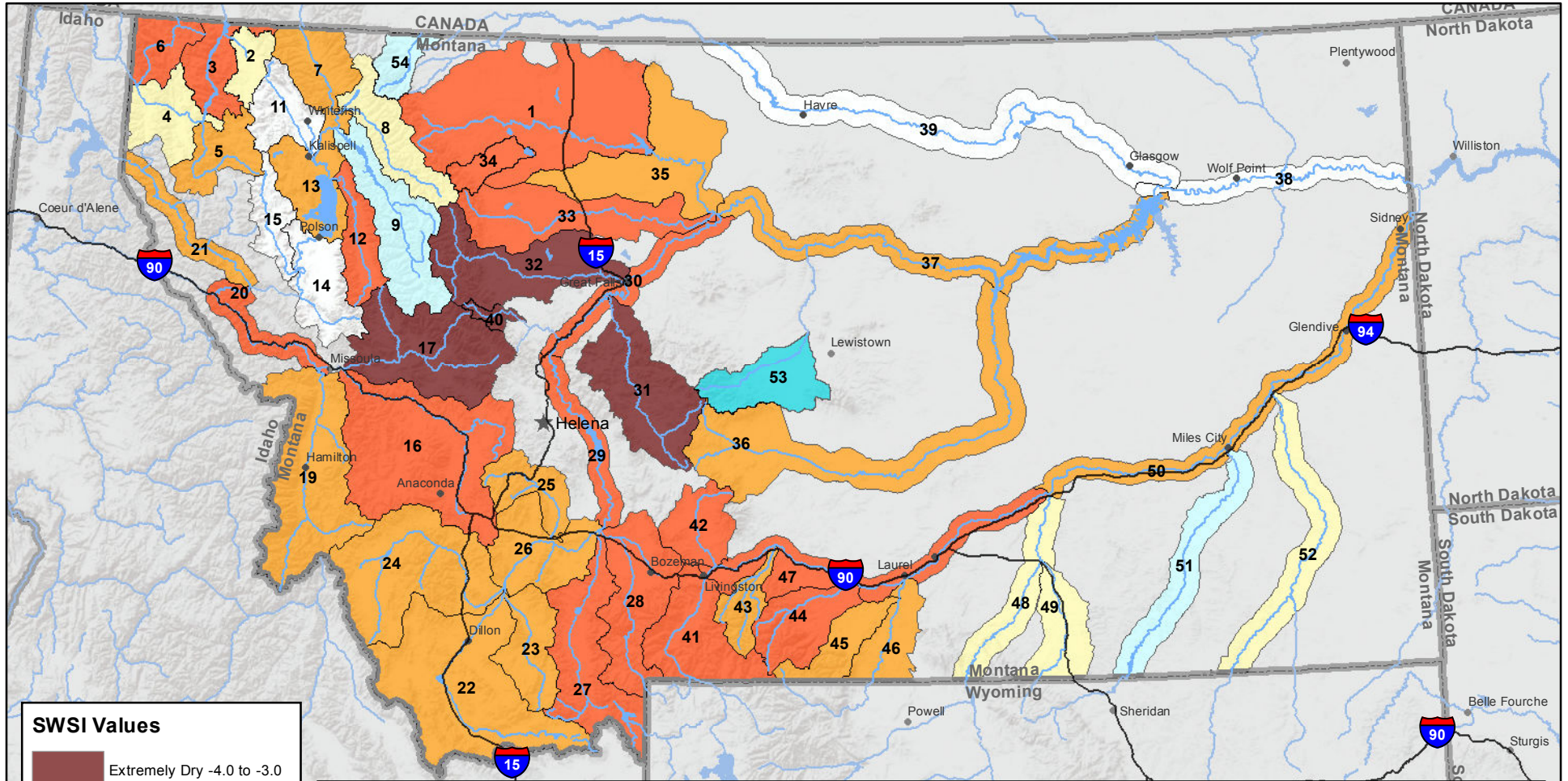
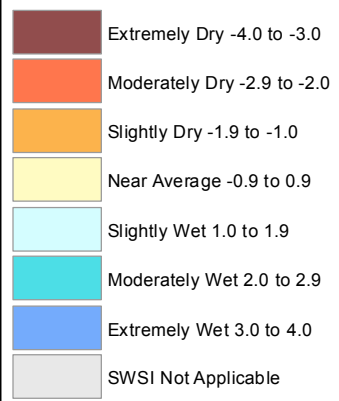


# Montana Data Collection Office Surface Water Supply Index (SWSI) October 1, 2016



### SWSI Values



### RIVER INDEX & SWSI VALUES

1 Marias above Tiber Reservoir -2.6	16 Clark Fork above Milltown -2	30 Missouri below Canyon Ferry -2.6	45 Rock/Red Lodge Creeks -1.2
2 Tobacco -0.6	17 Blackfoot -3.1	31 Smith -3	46 Clarks Fork Yellowstone -1.9
3 Kootenai Ft. Steele to Libby Dam -2.1	18 Clark Fork above Missoula -2.4	32 Sun -3.5	47 Yellowstone above Bighorn River -2.5
4 Kootenai below Libby Dam -0.5	19 Bitterroot -1.7	33 Teton -2.4	48 Bighorn below Bighorn Lake -0.6
5 Fisher -1.9	20 Clark Fork River below Bitterroot -2.2	34 Birch/Dupuyer Creeks -2.6	49 Little Bighorn -0.6
6 Yaak -2.4	21 Clark Fork River below Flathead -1.9	35 Marias -1	50 Yellowstone below Bighorn -1.6
7 North Fk. Flathead -1.3	22 Beaverhead -1.7	36 Musselshell -1.2	51 Tongue 1
8 Middle Fk. Flathead 0.8	23 Ruby -1.3	37 Missouri above Fort Peck -1.9	52 Powder -0.4
9 South Fk. Flathead 1.9	24 Big Hole -1.5	38 Missouri below Fort Peck	53 Upper Judith 2
10 Flathead at Columbia Falls 1.9	25 Boulder (Jefferson) -1.3	40 Dearborn near Craig -3	54 Saint Mary 1.5
12 Swan -2.1	26 Jefferson -1.4	41 Yellowstone above Livingston -2.8	
13 Flathead at Polson -1.7	27 Madison -2.8	42 Shields -2	
14 Mission Valley	28 Gallatin -2.8	43 Boulder (Yellowstone) -1.7	
15 Little Bitterroot	29 Missouri above Canyon Ferry -2.6	44 Stillwater -2.8	

Note: Data used to generate this map are PROVISIONAL and SUBJECT TO CHANGE

