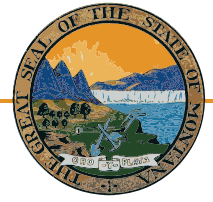


Legislative Snapshot 2015

Includes information for the State of Montana,
Senate District 3, and House Districts 5 and 6



http://msl.mt.gov/legislative_snapshot/



Senate District 3

Senator Bruce Tutvedt (R)

2335 W Valley Dr
Kalispell, MT 59901-6958



House District 5

Representative Ed Lieser (D)

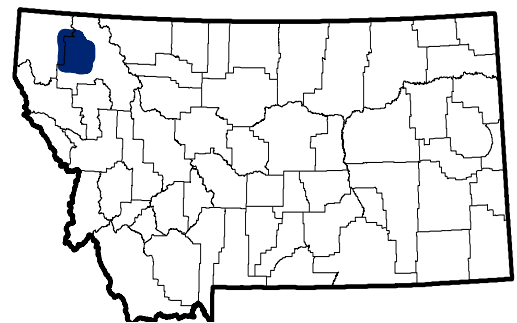
1355 Lion Mountain Dr
Whitefish, MT 59937-8072



House District 6

Representative Carl Glimm (R)

5107 Ashley Lake Rd
Kila, MT 59920



Letter from the Montana State Librarian

Welcome to the 2015 legislative session. On behalf of the Montana State Library, thank you for your dedication and hard work. You have many difficult decisions to make in the coming months, which, as a librarian, I know can be made easier when you are well-informed. This information booklet, compiled by our information experts, includes data on issues of local and state importance that we hope will be useful to you throughout the legislative session.

The 2015 Legislative Snapshot includes a wide range of information -- from data on crime and demographics to information on education and broadband access to statistics on land and water use. Each of our focus areas significantly impacts the lives of Montanans -- your constituents -- by influencing our environment, economy, and our quality of life. Access to the most current and accurate information is essential to making informed management decisions.

The print snapshot, as the title implies, is a snapshot of information in time. Though most of the data that is provided is the most current information available, data does change. To that end, this year State Library staff also built an online companion to the print snapshot. The online version will provide up-to-the-minute data as it becomes available and will change throughout the session. In addition to providing the most recent information available, you will also have the ability to customize much more of the data presented either by your legislative district or by the counties you serve. We also provide online maps that are fed by dynamic data whenever possible. Finally, in our online version, you will find links to additional resources if you find it necessary to conduct further research. You can easily access the online version by using the link below or the QR codes throughout the print snapshot.

The Montana State Library is a small and very unique agency. We employ not only librarians, but geographers and natural resource specialists and we partner with botanists, zoologists and ecologists. We work closely with federal and state agencies and local and tribal governments. We manage an enormous collection of state government information in all formats, keeping Montanans informed about the work of their government. And we ensure that Montana's blind and physically disabled have access to reading materials and information.

We also work on behalf of all of Montana's libraries to help them provide the latest and best information, technology and library services to their patrons -- your constituents -- whether it's downloadable ebooks, public access computers, online information resources, or the latest bestseller. Without the Montana State Library, Montana libraries would not be able to afford these resources and services for their patrons. Montana libraries are reintroducing themselves to their communities and our communities are better for it. Learn more at otlMontana.TUMBLR.com.

We created this booklet for you to provide vital information to help you make difficult decisions in the coming months, and to demonstrate the power of what a diverse staff with amazingly diverse skills can do to make information, in many different forms, available to every Montanan. Our work empowers Montanans by providing access to information, enhancing learning in families and communities, and building 21st Century skills. Knowing that our work makes a difference makes us very proud.

We hope that you use this Legislative Snapshot throughout the session. And we hope that you will stop by to see us -- in person or virtually. Whether you visit us at our library or online, you will be able to browse our collection of government and natural resource information, get help to research a specific issue, or find a quiet place to work or meet with colleagues. We are located one block east of the Capitol, behind the Montana Historical Society, at the north end of the Joe Mazurek Justice Building. And of course, our services are available 24 hours a day, seven days a week at: <http://msl.mt.gov>.

Sincerely,



Jennie Stapp
Montana State Librarian



Senate District 3 House District 5 House District 6

Table of Contents

- 2 Montana's Economic Performance
- 5 Demographics
- 7 Industries
- 9 Crime
- 10 Education
- 11 Early Childhood
- 12 Broadband
- 13 Libraries
- 14 Water
- 16 Land
- 17 Wildlife
- 18 District Details

Maps

- 20 Legislative Districts
- 21 Senate District 3

**Find additional Senate and House district data,
interactive maps, and even more resources online at:**
http://msl.mt.gov/legislative_snapshot/



Montana's economy has been outperforming the national economy since the turn of the century, including having better performance during the 2007 recession and a faster, stronger economic recovery exiting the recession. Montana's outperforming economy is evidenced in nearly every economic metric: Montana's unemployment rate has been lower than the U.S. unemployment rate since the 2001 recession and has remained about 1.5 percentage points lower than the U.S. rate throughout 2014. Montana has the 8th fastest GDP growth among states over both the last five years and ten years (ending in 2013), and Montana's GDP growth was faster than the U.S. average in every year since 2000, except for 2012. Montana's personal income growth has also outpaced the national average, ranking as the 6th fastest over the last five years and 7th over the last ten years. Montana has the fifth fastest wage growth among states for both the five and ten year timeframes. Montana's economy is healthy, posting above average job growth and improvement in all economic indicators.

However, not all areas of the state have performed equally. In general, the Eastern region has posted rapid economic growth in the past decade, with rapid expansion of employment and rising wages for many counties affected by the development of the Bakken oil fields. Many counties in the eastern edge of the state have experienced

the very low unemployment rates indicative of worker shortages. The Northwest and Southwest regions of Montana experienced strong growth leading up to the recession, but the concentration of construction and wood product manufacturing employment resulted in significant contraction during the national recession. Both the Northwest and Southwest regions lost over 8,000 jobs during the recession. While the Southwest region rebounded quickly, the Northwest suffered through an extended recession and still has elevated unemployment rates. Montana's seven reservation areas also posted economic growth for the last decade, but remain some of the most

economically sensitive areas of our states, often with unemployment levels two to three times higher than their surrounding regions. **Figure 1** illustrates the 2013 unemployment rates in the five labor market areas of Montana, along with the seven reservation areas.

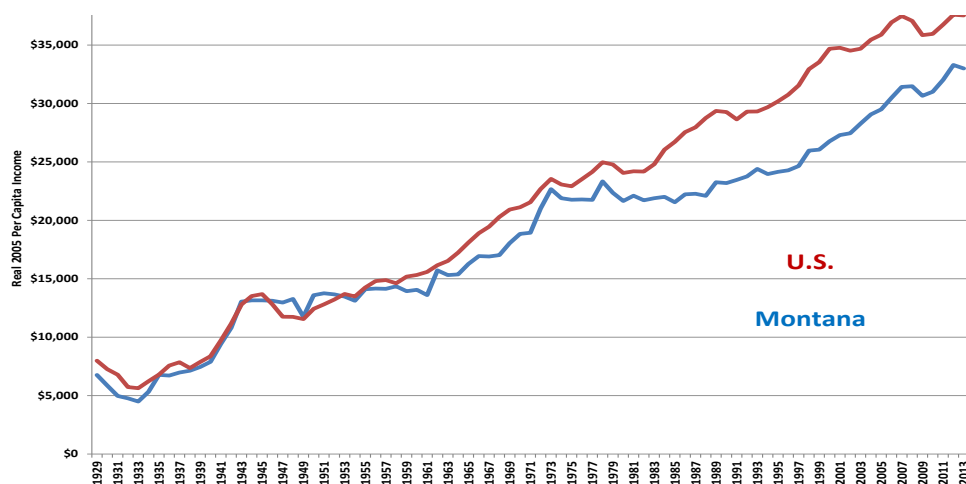
Montana's strong economic growth has not yet been enough to raise Montana's wage and income levels up to the national averages. With an average annual wage of \$37,575 in 2013, Montana ranked 47th among states in average wages in 2013, ahead of only Idaho, South Dakota, and Mississippi. Montana performs better comparatively in terms of income, ranking 35th for personal income per capita among states. Personal income includes income from business ventures, rental payments, royalties, social security, government transfer payments, and other sources in addition to wages. Montana's high rates of entrepreneurialism and business ownership improve our rankings for income compared to wages.

Montana is in this position of low wages and income compared to other states partially because of the slow income growth in the last half of the 20th century. **Figure 2** compares real per capita income in Montana and the U.S. using all available data back to 1929. Per capita income measures the total amount of income received in the state divided by the

Figure 1 2013 Unemployment Rates in Five Labor Market Areas and Seven Reservations



Figure 2 Comparison of Montana and U.S. Real Per Capita Income in 2005 Dollars



Source: Bureau of Economic Analysis. Calculations and deflation by the Montana Department of Labor and Industry.

Montana's Economic Performance

population, providing a measure of relative wealth that can be used to compare to other areas. Figure 2 illustrates that per capita income was relatively equal in Montana and the U.S. from 1929 to about 1952, with Montana's per capita income being higher than the U.S.'s per capita income for a short period from 1946 to 1952. From 1952 to 2000, the U.S. per capita income rose faster than Montana's, creating the large gap in income levels that our state is now trying to overcome. However, Montana has been on the right path since 2000, with wage and income growth faster than the national average, narrowing the gap between Montana's and the U.S. per capita income levels.

It is difficult to isolate one cause for the slower growth of Montana's economy during the second half of the 20th century. Some economists contribute the decline to "the natural resource curse," which is a phenomenon where economies concentrated in natural resource industries (such as agriculture, mining, and petroleum refining) have slow long-term growth rates despite the infusion of capital into the economy from natural resource development. Other economists note the slower growth in the early 1980s corresponds with the closure the copper mine and smelter in the Butte and Anaconda area. Even others point to the slow adoption of computers and technology in the Montana economy compared to the more rapid adoption in the U.S. economy during the 1990s. The adoptions of desktop computers and technology advancements in the 1990s resulted in large productivity gains for the U.S. economy, driving up workers' wages and income levels. Some data suggests that Montana lags behind other states in the adoption and use of technology, and as a result, has lower productivity levels than other states. In actuality, all or none of these factors could have slowed Montana's growth in the latter half of the 20th century.

The diversification of Montana's economy over the last sixty years has also influenced the composition and performance of Montana's economy.

Figure 3 illustrates the changing roles of industries in the composition of Montana income since 1930. Like the U.S. and other developed countries worldwide, Montana

has become more of a service-based industry over time as consumers have demanded more services than goods. The goods-based industries of manufacturing, construction, mining, and agriculture now comprise about 24% of Montana's personal income derived from work. The goods-producing industries are still expanding in terms of the value of their products, generally increasing production value in real terms over time, but their share of the overall economy has shrunk because the service-based industries are growing at a faster rate than the goods-based industries. This trend is expected to continue as Montana builds its post-industrial economy.

Although the service-based industries are often described as low-paying industries with undesirable jobs, like retail or tourism jobs, the service sector also includes high-paying, high-skill jobs that require advanced degrees, such as those in the professional services, health care, or financial services industries. Service-based industries also contribute to Montana's exports, bringing new money into Montana from the sale of their services, and make a sizable contribution to our state's GDP. For example, financial activities is a service-based industry that includes banks, investment firms, and insurance agencies. In 2013, the average wage for the industry was over \$55,000, and the industry provided 17.3% of Montana's total GDP – more than any other industry.

In general, greater economic diversification is associated with faster and more stable economic growth in the long-term. The movement towards the service-based industries has increased demand for well-educated, high-skilled workers, especially in industries like professional services and health care. While it is difficult to directly compare the rate of diversification, Montana's economy may have lagged behind the national economy in the movement to a service-based industry, which could have contributed to the lagging income growth in the second half of the 20th century.

In terms of the current industry mix, there are some differences in the types of industries in Montana compared to the U.S. that may help to explain wage differences. However, the differences are too minor to fully explain the lower wages in Montana or the cause of the lagging growth over the last half century. For example, when compared to the U.S., Montana has a slightly higher concentration in the lower-paying industry of leisure activities (which includes many tourism type businesses such as hotels, bars, restaurants, and ski resources), and a lower concentration in the high-tech, high-paying professional services industry. The differences in these industry concentrations could be used to explain Montana's lower wages. But there are also industry mix differences that would suggest that Montana should

Figure 3 Share of Montana Personal Income by Industry



have higher wages than the U.S., such as Montana having a higher concentration than the U.S. in mining and healthcare, both high-paying industries.

Figure 4 illustrates Montana's 2013 industrial composition using three different economic metrics – GDP, work earnings, and employment to help demonstrate the relative size of Montana's industries and the differences in how each industry contributes to the economy. Financial activities was the largest industry for GDP, followed by the government and trade sectors. GDP measures the overall value added by the industry for economic activity, and can be thought of as the value of sales minus the costs paid for non-labor inputs. Wages earned by Montanans are included in GDP because they represent the value of economic activity added by workers to the production of goods and services in Montana.

Compared to the U.S., Montana has a much smaller share of manufacturing (12.5% in the U.S. compared to 7% in MT). However, larger concentrations in agriculture, mining, and construction make up this shortfall, leaving the goods-producing industries in Montana as roughly 24% of GDP (slightly higher than the 20% of U.S. GDP that lies within the goods-producing sectors). Montana's manufacturing is likely stymied by the long distance from Montana to major consumer cities and ports, which increase transportation costs for manufactured goods. The transportation sector comprises a larger share of Montana's economy compared to the U.S., likely because Montana's large size and rural nature requires a lot of transportation to ship our goods to consumers. Montana's

share of health care is larger than the U.S., partially due to Montana's older population (the demand for health services increases as a person ages).

Personal income is also shown in Figure 4. Personal income is the amount of income received by Montana residents as a result of economic activity. Personal income includes the wages and benefits earned by workers, plus proprietor income, royalty income, rents, or government transfers. However, only work earnings (workers' wages, benefits, and proprietor earnings) can be assigned to an industry, so other types of personal income are not included in Figure 4. The largest industry in terms of personal income earned from work (work earnings) is health care and education, along with government and trade.

Finally, the largest private industries in terms of employment are health care, trade, and leisure activities. These three industries combined employ nearly 45% of Montana's workers. Government is also a large employer with roughly 18.8% of employment, most of whom are employed by local governments. Employment represents the primary way that the benefits of economic growth are distributed through the economy, with most Montanans receiving their income from wages instead of capital rents like dividends or royalties. GDP, personal income, and employment all equally measure important elements of the Montana economy, just like all industries are important to the proper functioning of the Montana economy. All industries work together to create a dynamic economy.

In conclusion, Montana's economy is performing well, gaining ground on the national average in terms of wages and personal income because of rapid growth. Continued growth faster than the U.S. average is needed to regain our competitiveness with other states in terms of per capita income and higher wages, which was lost over a long period of lagging growth in the second half of the 20th century. A number of changes occurred in both the U.S. and Montana economies during this time, making it difficult to determine why Montana's economy experienced this extended period of slower growth. Diversification into a more service-based economy likely accelerated wage growth in both the U.S. and Montana. Lagging diversification, and differences in industry mix between the U.S. and Montana, may present partial answers, but they are not the full explanation. Much to the chagrin of policy makers and economic developers, Montana's economy is influenced by an infinite number of factors, many of them that are outside of our control. However, it is within our control to ensure that Montana's businesses and workers are responsive to economic changes and prepared to navigate an ever-changing global economy. This preparedness can be achieved by ensuring our workers have the education and training needed to adapt, prosper, and innovate in whatever situation is presented in the future. In this way, our workforce can become more productive, earning higher wages and greater profits for the Montana economy.

Source: Montana Department of Labor and Industry, author: Barbara Wagner

Figure 4 2013 Montana GDP, Work Earnings and Employment





Demographics

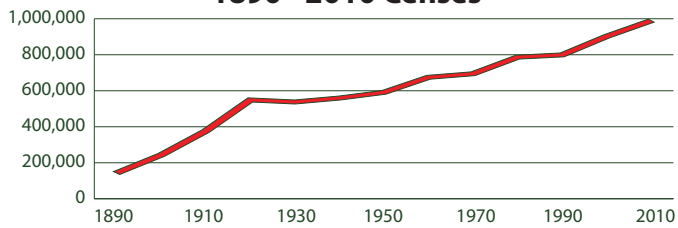
Montana's population

Highlights

- Montana's total population estimate reached over one million people in 2012.
- The age group 65 and over is projected to be 23.5% of the population in 2040 (up from 14.9% in 2010).
- Montana's birth rate has been below the U.S. birth rate since the 80s.
- Montana is ranked second among the states for percent of the civilian population 18 years and over who are veterans.
- In the fourth quarter of FY14, there were 124,816 Medicaid enrollments.

Source: US Census Bureau, 2012 American Community Survey; Montana Department of Commerce Big Sky Pathways Report March 2014; Montana Department of Public Health and Human Services Montana Vital Statistics 2013

Montana Historic Population Growth 1890 - 2010 Censuses



Source: U.S. Census Bureau, 1890 - 2010 Censuses

2010 Census Data

| | Total | Male | Female |
|----------------------|-------------|-------------|-------------|
| United States | 308,745,538 | 151,781,326 | 156,964,212 |
| Under 5 years | 20,201,362 | 10,319,427 | 9,881,935 |
| Under 18 years | 74,181,467 | 37,945,136 | 36,236,331 |
| 18 to 64 years | 194,356,087 | 96,473,230 | 97,882,857 |
| 65 years and over | 40,267,984 | 17,362,960 | 22,905,024 |
| Montana | 989,415 | 496,667 | 492,748 |
| Under 5 years | 62,423 | 32,129 | 30,294 |
| Under 18 years | 223,563 | 114,909 | 108,654 |
| 18 to 64 years | 619,110 | 313,713 | 305,397 |
| 65 years and over | 146,742 | 68,045 | 78,697 |

Source: U.S. Census Bureau, 2010 Census

Montana Population Estimates

| | 2010 Estimate | 2011 Estimate | 2012 Estimate | 2013 Estimate |
|---------|------------------|------------------|------------------|------------------|
| Montana | 990,527 | 997,600 | 1,005,494 | 1,015,165 |

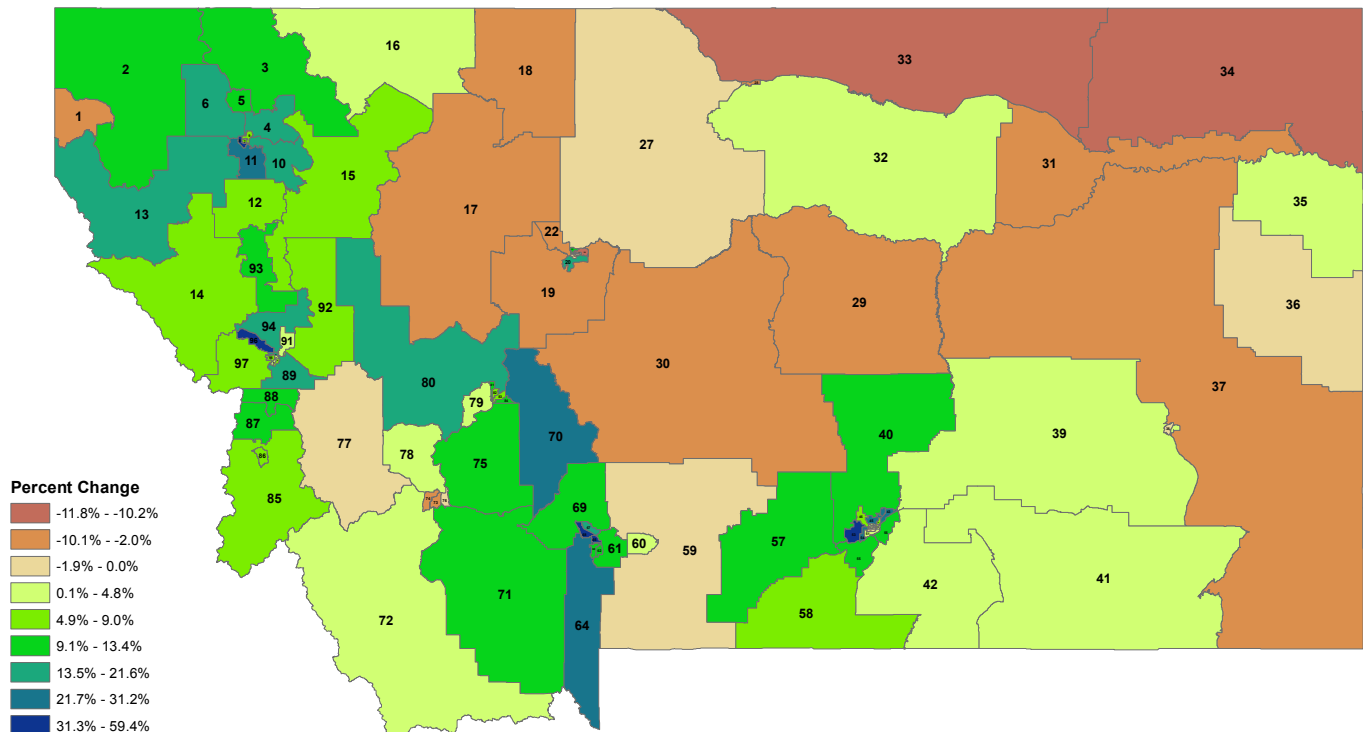
Source: U.S. Census Bureau, 2013 Population Estimates

Estimates of the Components of Resident Population Change: April 1, 2010 to July 1, 2013

| 2013 Population Estimate | Total Population Change | Natural Increase | Births | Deaths | Migration |
|--------------------------------|-------------------------------|---------------------|--------|--------|-----------|
| 1,015,165 | 25,748 | 10,260 | 39,217 | 28,957 | 15,200 |

Source: U.S. Census Bureau, 2013 Population Estimates

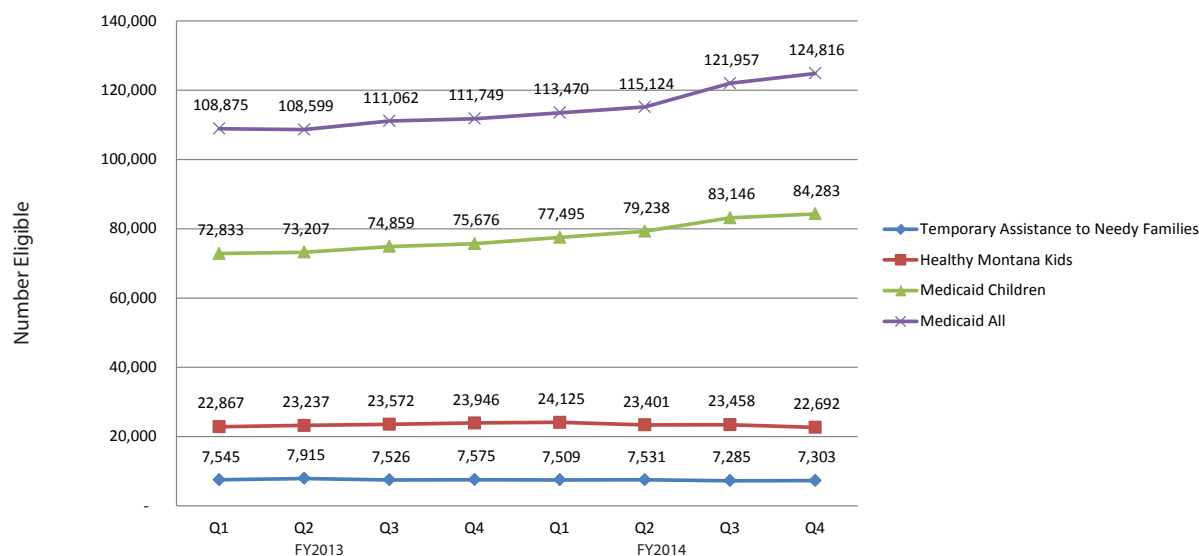
Population Change in Montana from 2000 to 2010 Census By House District



Source: Data: Montana State Library, U.S. Census Bureau, 2000 and 2010 Censuses; Map: Montana State Library

Detailed data is available in the online Legislative Snapshot located at http://msl.mt.gov/legislative_snapshot/.

Montana Department of Public Health and Human Services Selected Eligibles - Quarterly Enrollment



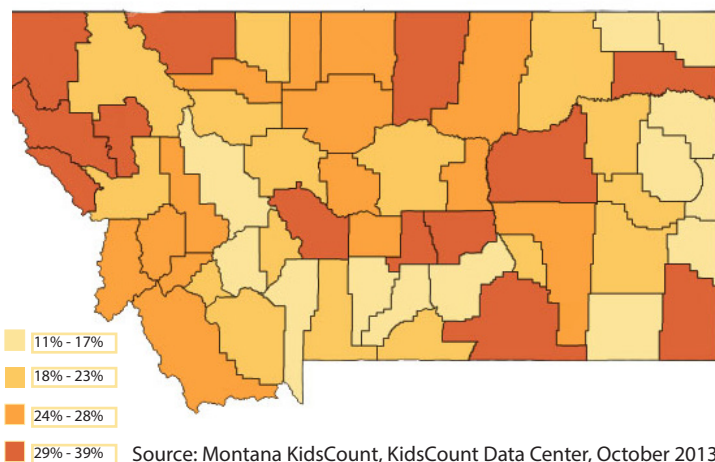
Source: Montana Department of Public Health and Human Services, August 2014

Montana Poverty Status - Below Poverty Level

| | Number | % of total |
|---------------|----------------|--------------|
| By sex | | |
| Male | 66,890 | 13.8% |
| Female | 76,229 | 15.8% |
| By age | | |
| Age <18 | 43,459 | 19.9% |
| Age 18-64 | 87,634 | 14.5% |
| Age 65+ | 12,026 | 8.4% |
| Total | 143,119 | 14.8% |

Source: US Census Bureau, 2012 American Community Survey

Montana Child Poverty By County (Percent - 2011)



Profile of Affordable Care Act Coverage Expansion Enrollment for Medicaid/CHIP and the Health Insurance Marketplace 10-1-2013 to 3-31-2014

| | Number | % of total |
|-------------------------------------|--------|------------|
| Marketplace Plan selections: | 36,584 | |
| Change in Medicaid/CHIP Enrollment: | 14,132 | |
| By gender | | |
| Female | 19,536 | 53% |
| Male | 17,044 | 47% |
| By age | | |
| Age <18 | 2,132 | 6% |
| Age 18-25 | 3,188 | 9% |
| Age 26-34 | 6,978 | 19% |
| Age 35-44 | 5,809 | 16% |
| Age 45-54 | 7,245 | 20% |
| Age 55-64 | 11,195 | 31% |
| Age 65+ | 37 | 0% |
| By financial assistance | | |
| With financial assistance | 31,452 | 86% |
| Without financial assistance | 5,132 | 14% |

Source: ASPE Marketplace Summary Enrollment Report and CMS March 2014 Medicaid/CHIP Enrollment Report

Montana Veteran Population Projections

Montana is ranked second among the states for percent of the civilian population 18 years and over who are veterans. (12.8 percent, U.S. Census Bureau, 2012 American Community Survey)

| | Number | Percent |
|---|--------|---------|
| Veterans, civilian population 18 years and over | 97,991 | |
| Period of service | | |
| Gulf War (9/2001 or later) veterans | 10,142 | 10.1% |
| Gulf War (8/1990 to 8/2001) veterans | 15,590 | 15.8% |
| Vietnam era veterans | 36,070 | 37.2% |
| Korean War veterans | 11,132 | 11.4% |
| World War II veterans | 7,957 | 8.0% |

Source: U.S. Census Bureau, 2012 American Community Survey



Industries

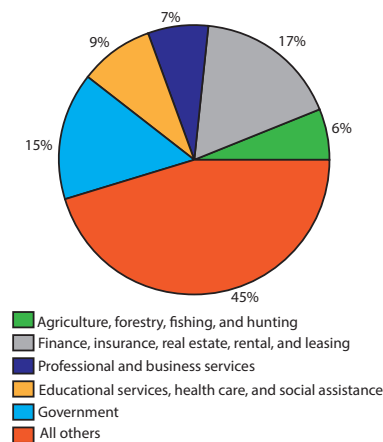
Montana's diverse, multi-sector economy

Highlights

- The Montana Site Selector tool, <http://www.montanasiteselector.com>, provides critical data to grow businesses. Land ownership data on the Site Selector appear courtesy of the State Library.
- Sales, office, and service occupations comprise 43% of all Montana occupations.
- Over 72.7% of wages come from businesses that employ 249 or fewer employees.

Source: U.S. Census Bureau, 2012 American Community Survey; Microdata from the Quarterly Census of Employment and Wages, 2013, MT Dept. of Labor and Industry.

Top Five Montana Industries as a Percent of Total GDP (\$44,040,000), 2013



Source: U.S. Bureau of Economic Analysis (BEA), "Bearfacts," 2013

Montana Occupations

Montana occupations based on Occupations from U.S. Census, 2008-2012 American Community Survey, Selected Economic Characteristics report. Below is the breakdown of the 478,254, "Civilian employed population 16 years and over".



Source: U.S. Census Bureau, 2012 American Community Survey

Detailed data is available in the online Legislative Snapshot located at http://msl.mt.gov/legislative_snapshot/.

Top 5 Agriculture and Livestock Producers by County, 2012

| COUNTY | BARLEY - SALES, MEASURED IN \$ |
|-------------|--------------------------------|
| TETON | \$31,493,000 |
| PONDERA | \$27,984,000 |
| GLACIER | \$22,729,000 |
| TOOLE | \$22,088,000 |
| GALLATIN | \$9,787,000 |
| STATE TOTAL | \$202,026,000 |

| COUNTY | WHEAT - SALES, MEASURED IN \$ |
|-------------|-------------------------------|
| CHOUTEAU | \$143,382,000 |
| HILL | \$127,013,000 |
| ROOSEVELT | \$95,097,000 |
| VALLEY | \$85,468,000 |
| SHERIDAN | \$74,916,000 |
| STATE TOTAL | \$1,358,079,000 |

| COUNTY | CROP TOTALS - SALES, MEASURED IN \$ |
|-------------|-------------------------------------|
| CHOUTEAU | \$159,038,000 |
| HILL | \$138,597,000 |
| VALLEY | \$119,097,000 |
| SHERIDAN | \$114,836,000 |
| ROOSEVELT | \$113,026,000 |
| STATE TOTAL | \$2,255,996,000 |

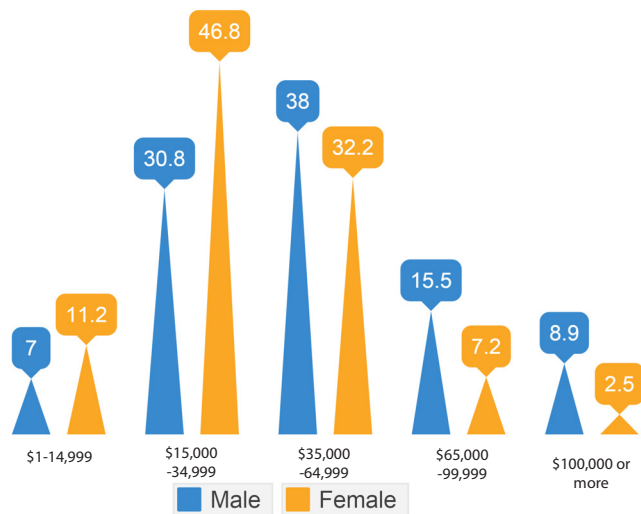
| COUNTY | SHEEP, INCL LAMBS-SALES, MEASURED IN HEAD | SHEEP, INCL LAMBS-SALES, MEASURED IN \$ |
|---------------|---|---|
| WHEATLAND | 11,538 | \$2,565,000 |
| GARFIELD | 13,225 | \$2,303,000 |
| CARTER | 19,910 | \$2,176,000 |
| GOLDEN VALLEY | 8,326 | \$1,920,000 |
| BLAINE | 16,149 | \$1,792,000 |
| STATE TOTAL | 175,325 | \$25,254,000 |

| COUNTY | HOGS-SALES, MEASURED IN HEAD | HOGS-SALES, MEASURED IN \$ |
|-------------|------------------------------|----------------------------|
| CASCADE | 98,357 | \$7,460,000 |
| PONDERA | 48,641 | \$6,208,000 |
| GLACIER | 43,568 | \$6,004,000 |
| TOOLE | 28,478 | \$5,192,000 |
| LIBERTY | 33,420 | \$5,034,000 |
| STATE TOTAL | 283,649 | \$34,149,000 |

| COUNTY | CATTLE, INCL CALVES-SALES, MEASURED IN HEAD | CATTLE, INCL CALVES-SALES, MEASURED IN \$ |
|-------------|---|---|
| YELLOWSTONE | 116,126 | \$151,250,000 |
| BEAVERHEAD | 99,248 | \$109,035,000 |
| CUSTER | 85,795 | \$86,736,000 |
| FERGUS | 64,671 | \$71,079,000 |
| CARTER | 63,925 | \$67,156,000 |
| STATE TOTAL | 1,711,264 | \$1,764,767,000 |

Source: U.S.D.A. National Agricultural Statistics Service 2012

Full-time Year-round Workers with Earnings, % by Earnings Range



Source: U.S. Census Bureau, 2012 American Community Survey

Montana Employment, Wages and Firms by Size Class, 2013

| Number of employees | Employment | Wages | Establishments |
|---------------------|------------|-------|----------------|
| Fewer than 5 | 12.1% | 11.0% | 66.3% |
| 5 to 9 | 11.1% | 9.3% | 16.2% |
| 10 to 19 | 12.7% | 11.1% | 9.2% |
| 20 to 49 | 16.4% | 15.4% | 5.4% |
| 50 to 99 | 11.4% | 11.7% | 1.6% |
| 100 to 249 | 13.7% | 14.1% | 0.9% |
| 250 and over | 22.6% | 27.3% | 0.4% |

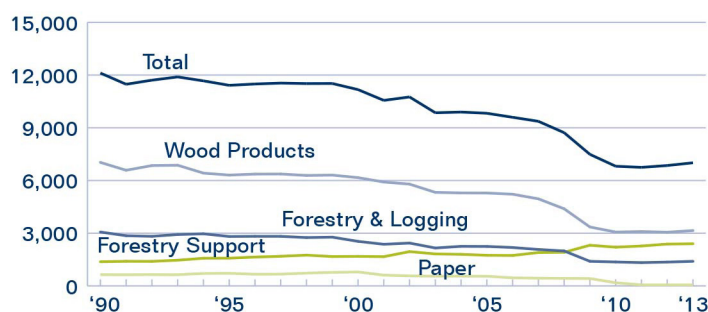
Source: : Microdata from the Quarterly Census of Employment and Wages, 2013, MT Dept. of Labor and Industry.

2013 Nonresident Traveler Expenditures

| Expenditure Category | Allocation by Category | Total Expenditures |
|-------------------------|------------------------|------------------------|
| Gasoline, Diesel | 32% | \$1,165,560,000 |
| Retail Sales | 19% | \$704,320,000 |
| Restaurant, Bar | 17% | \$625,300,000 |
| Hotel, Motel | 10% | \$354,220,000 |
| Groceries, Snacks | 8% | 306,580,000 |
| Outfitter, Guide | 4% | \$143,690,000 |
| Licenses, Entrance Fees | 2% | \$84,160,000 |
| Auto Rental | 2% | \$68,720,000 |
| Rental Cabin, Condo | 1% | \$51,170,000 |
| Vehicle Repairs | 1% | \$45,970,000 |
| Campground, RV Park | 1% | \$26,730,000 |
| Misc. Services | 1% | \$20,780,000 |
| Gambling | <1% | \$12,910,000 |
| Farmers Market | <1% | \$8,460,000 |
| Transportation Fares | <1% | \$5,930,000 |
| Total | | \$3,624,480,000 |

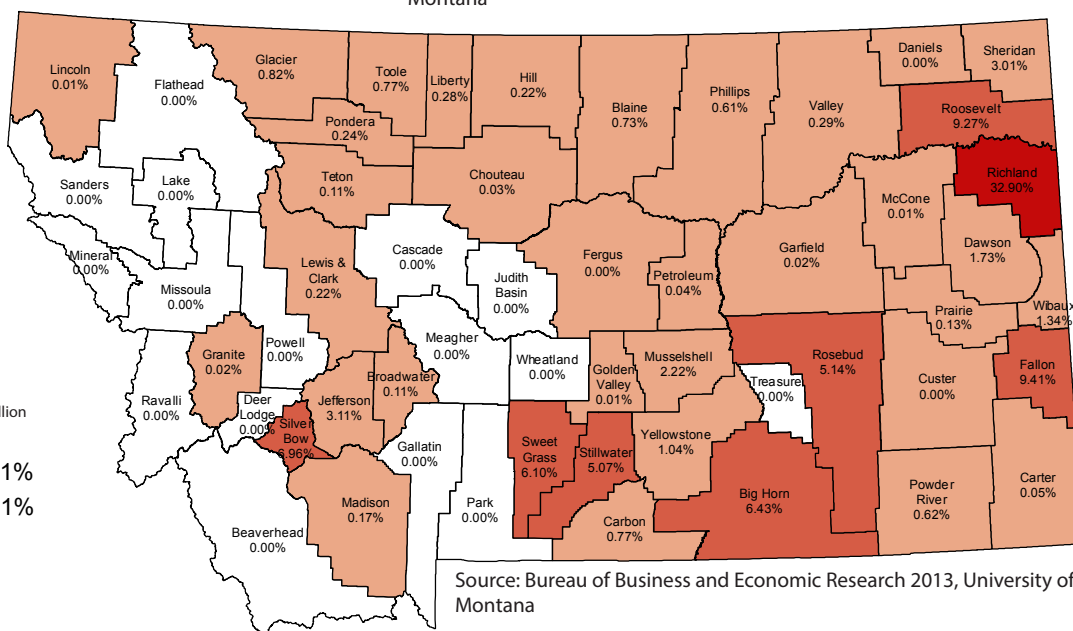
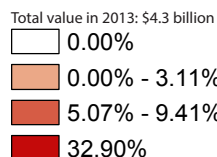
Source: Institute for Tourism & Recreation Research 2013, University of Montana

Montana Forest Industry Employment 1980-2013



Source: Bureau of Economic Analysis, U.S. Department of Commerce 2013

Impact of Oil, Natural Gas, Coal and Metal Production by County for Calendar 2013 Percent of Total Value (\$4.3 billion) by County



Source: Bureau of Business and Economic Research 2013, University of Montana



Crime

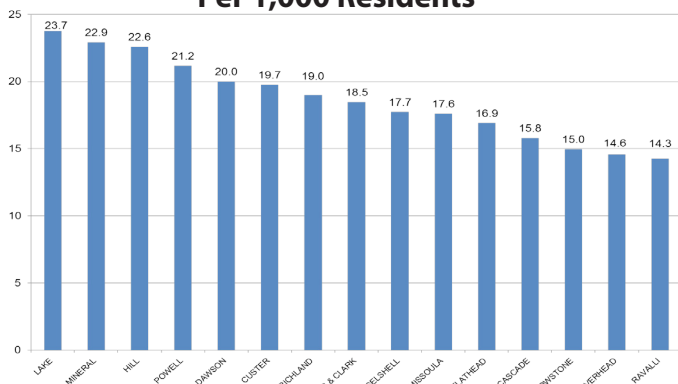
Montana's public safety

Highlights

- Convicted felony offenders cost Montana taxpayers an average of \$65.21-\$70.20 per day while being held in county jails in FY 2012.
- Total number of Sexual or Violent Offender Registry registrants as of October 29, 2014 was 5,711.
- 24.5% of high school respondents rode with a driver who had been drinking alcohol (in past 30 days).

Source: Montana Department of Corrections 2013 Biennial Report; Montana Office of Public Instruction, 2013 Youth Risk Behavior Survey

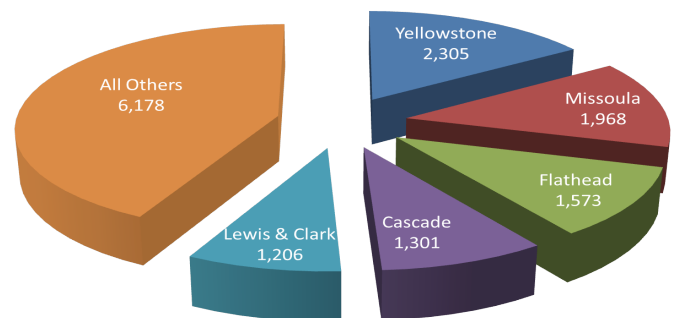
Offender Population Rates by County Per 1,000 Residents



Offender Population Rates by County: Determining offender population rates for Montana counties provides an analysis that corrects for population variances among the counties. For FY 2013-2014, Eastern Montana's Dawson County joined Western Montana counties Lake, Mineral and Powell, and the Hi-Line's Hill County, in contributing offenders at rates of 20 or more offenders per 1,000 residents.

Source: Montana Department of Corrections 2014

County Contributions to Offender Population June 30, 2014



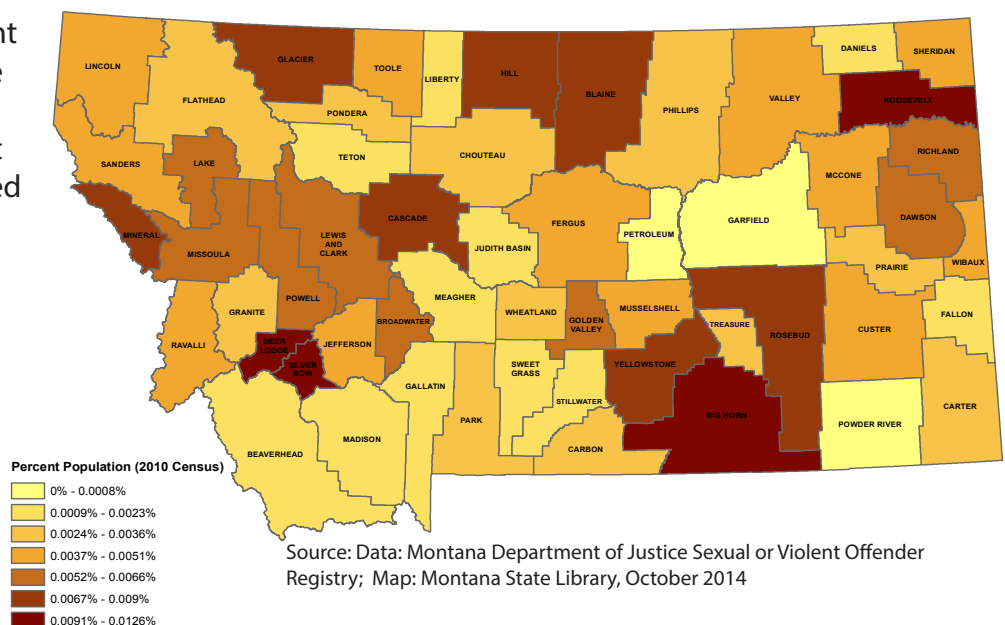
County Contributions to Offender Population: Montana's most-populous counties contribute the largest number of offenders to the corrections system. As in the previous biennium, the five counties with the largest population were responsible for 58% of all offenders counted in mid-2014. The other 51 counties combined sent 42% of offenders.

Source: Montana Department of Corrections 2014

Sexual or Violent Offender Registry

Created by the Montana Department of Justice in 1989, the Sexual or Violent Offender Registry ([SVOR](#)) is a valuable resource for Montanans to protect their families against sexual or violent offenders. Information can be accessed in more specific geographies, e.g. counties, towns and streets.

Sexual and/or Violent Offenders Percent of Population by Montana County



Source: Data: Montana Department of Justice Sexual or Violent Offender Registry; Map: Montana State Library, October 2014



Montana's school funding was restructured in Senate Bill 175

Highlights

- Senate Bill 175 provides an increase in K-12 BASE aid in FY 2014 and 2015. The new money is provided to all school districts through inflationary increases in the per-average number belonging entitlements, a redesign of the basic entitlement, a new Data for Achievement payment, and a new natural resource development K-12 funding payment. The increase in dollars in 2014 from the previous year was \$22,300,405.
- 41% of K-12 students are at schools with enrollments between 250-499.
- There are 824 public schools with a total enrollment of 144,129 in school year 2013-14.
- In school year 2013-14, the nonpublic school enrollment was 8,132 in private and 4,694 in home school.

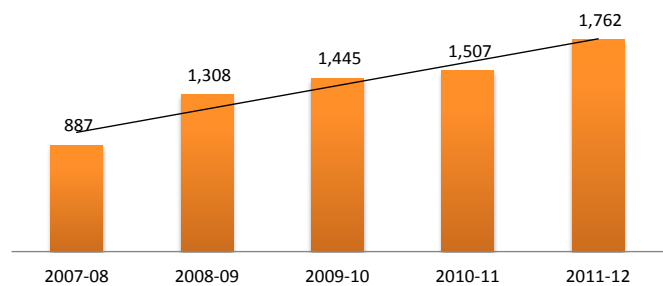
Source: Montana Office of Public Instruction 2014

High School Completion Rates

| School Year | Percent |
|-------------|---------|
| 2008-09 | 82% |
| 2009-10 | 82% |
| 2010-11 | 82% |
| 2011-12 | 84% |
| 2012-13 | 84% |

Source: Montana Office of Public Instruction

Homeless Children and Youth Enrolled in Montana Public Schools



Source: National Center for Homeless Education

Fourth Graders Who Scored below Proficient Reading Level by Family Income

| Family Income | Data Type | 2009 | 2011 | 2013 |
|--|-----------|------|------|------|
| Eligible for free/reduced school lunch | Percent | 79% | 77% | 78% |
| Not eligible for free/reduced school lunch | Percent | 56% | 55% | 54% |

Source: National Kids Count 2013

Montana Test Scores - Achievement Levels

| | | | 2005 | 2007 | 2009 | 2011 | 2013 |
|-----------|---------|------------------------|------|------|------|------|------|
| 4th Grade | Reading | At or above proficient | 36% | 39% | 35% | 36% | 35% |
| | Math | At or above proficient | 38% | 44% | 45% | 45% | 45% |
| 8th Grade | Reading | At or above proficient | 37% | 39% | 38% | 42% | 40% |
| | Math | At or above proficient | 36% | 38% | 44% | 46% | 40% |

Source: U.S. Department of Education, National Center for Education Statistics, National Assessment of Educational Progress (NAEP). Available online at <http://nces.ed.gov/nationsreportcard/>

ACT 2013 State Percent of High School Graduates Tested, Average Composite Score, and Percent Meeting Benchmarks by Subject

| Average Composite Score Rank | State | Percent of Graduates Tested | Average Composite Score | Percent Meeting English Benchmark | Percent Meeting Reading Benchmark | Percent Meeting Math Benchmark | Percent Meeting Science Benchmark |
|------------------------------|---------------|-----------------------------|-------------------------|-----------------------------------|-----------------------------------|--------------------------------|-----------------------------------|
| 19 | Montana | 72 | 21.3 | 66 | 50 | 49 | 39 |
| 1 | Massachusetts | 22 | 24.1 | 84 | 66 | 72 | 55 |
| 13 | Idaho | 49 | 22.1 | 74 | 54 | 52 | 43 |
| 18 | Nebraska | 84 | 21.5 | 71 | 48 | 46 | 41 |
| 25 | North Dakota | 98 | 20.5 | 61 | 41 | 43 | 35 |

Source: ACT, "The Condition of College & Career Readiness 2013 Montana"



Early Childhood

Montana is one of eight states without a publicly-funded pre-kindergarten option for four year olds

Highlights

- The Department of Public Health and Human Services has a registration and a license process for different types of child care providers. Over 900 facilities are currently registered and/or licensed. Those facilities have a capacity for over 18,000 children. Visit their website to find child care providers: <http://ccubs-sanswrite.hhs.mt.gov/MontanaPublic/ProviderSearch.aspx>.
- In 2014, Montana adopted the "Montana Early Learning Standards," which guide the work of early childhood professionals to ensure that Montana children from birth to age five have the skills and knowledge they need to achieve success in learning to reach their full potential in life.
- 2010 Child Care and Development Fund estimates put the cost of child care in Montana for an infant at 47% of a single mother's median income and 14% of a two-parent family's median income.

Source: State of Montana, Department of Public Health and Human Services, Montana Office of Public Instruction web site November 3, 2014, U.S. Department of Health and Human Services, Administration for Children and Families, Office of Child Care.

Children Ages 3 and 4 Not Attending Preschool, by Poverty Status

| Children in preschool | Data Type | 2005-2007 | 2009-2011 | 2010-2012 |
|--|-----------|-----------|-----------|-----------|
| Children below 200% poverty not in preschool | Number | 7,000 | 8,000 | 8,000 |
| | Percent | 68% | 60% | 63% |
| Children at or above 200% poverty not in preschool | Number | 7,000 | 6,000 | 7,000 |
| | Percent | 58% | 53% | 57% |

Data Source: National Kids Count, Population Reference Bureau, analysis of data from the U.S. Census Bureau, 2005-07 to 2010-12 three-year American Community Survey

Best Beginnings STARS to Quality

The Department of Public Health and Human Services administers the Best Beginnings STARS to Quality Program, which is a voluntary quality rating improvement system that aligns quality indicators with support and incentives for early childhood programs and early childhood professionals. Nearly 200 programs participate across the state. Participants have access to training to meet the various requirements.

Source: State of Montana, Department of Public Health and Human Services 2014

Head Start Enrollment by Age Group

| Age Group | 2009 | 2010 | 2011 | 2012 | 2013 |
|-------------------|--------------|--------------|--------------|--------------|--------------|
| <3 | 733 | 808 | 804 | 897 | 977 |
| 3 | 1,861 | 1,874 | 1,884 | 1,795 | 1,841 |
| 4 | 2,628 | 2,545 | 2,669 | 2,437 | 2,720 |
| 5 years and older | 157 | 187 | 59 | 69 | 33 |
| Total | 5,379 | 5,414 | 5,416 | 5,198 | 5,571 |

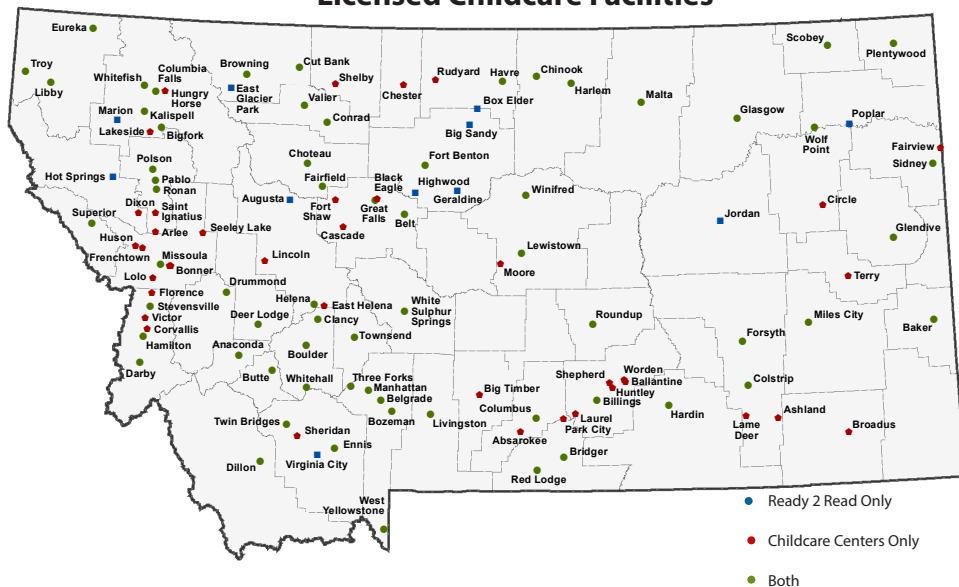
Source: National Kids Count 2013

Ready 2 Read

In Montana – perhaps more so than in other states – libraries are community hubs for healthy child and family development. The Montana State Library's Ready 2 Read program helps to educate parents and caregivers about how best to develop language and literacy skills in their children. Montana libraries have a long history of providing free, high-quality educational programming for young children. Montana libraries are also virtually everywhere – from the smallest tribal community to our largest metropolitan area – and they serve communities where there is absolutely nothing else available for young children. Libraries build on how children learn best, by designing and delivering content-rich and play-based experiences that link early learning best practice to books, programming, and collections. Our resources empower parents and caregivers to explore, pose questions, make connections, exchange information and ideas, and instill in young children not only a love of learning, but also the skills for learning.

<http://ready2readmontana.org/>

Ready 2 Read Programs and Licensed Childcare Facilities



Source: Montana State Library, Department of Public Health and Human Services 2014



Montana's broadband connectivity is a critical resource for purposes of education and employment, to access eGovernment services, and to participate broadly in our global world

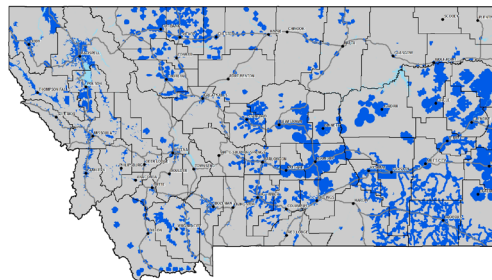
Highlights

- The State of Montana has over 200 services available online, such as driver history records, hunting licenses and unemployment insurance. Visit the online services page at: <http://mt.gov/services/default.aspx>.
- Broadband speeds of 2.4 megabytes per second are required for DVD-quality Netflix streaming.
- Public libraries provide no cost high speed internet for the majority of the state population.
- 2014 concludes the state broadband mapping program, <http://mtbroadband.org>.
- The National Broadband Plan is available at <http://www.fcc.gov/national-broadband-plan>.

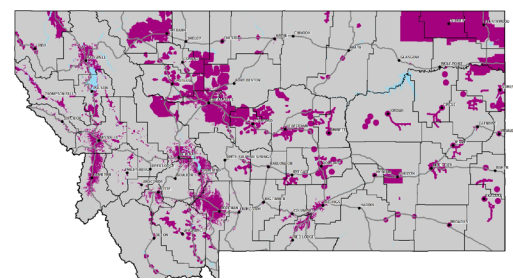
Comparing Data Bitrates (speeds)

| Broadband Speed | Use |
|-----------------|-------------------------------|
| 700 kbps | minimum Netflix streaming |
| 1.2 Mbps | Skype video call |
| 2.4 Mbps | DVD quality Netflix streaming |

DSL Availability



Highest Broadband Speed



Source: State Information Technology Services Division 2014



For More Information Contact:
MTA (406) 442-4316
www.telecomassn.org
Vision Net, Inc (406) 467-4700
www.vision.net

■ INTERNET PEERING POPS ● EXISTING NODE ICONNECT FIBER HOTEL
— TIER 1 INTERNET — VISION NET NETWORK (UP TO 10G CAPACITY) — EXISTING INDEPENDENT CO. FIBER OPTICS

| | | | | |
|---|---|--|--|--|
| ■ BLACKFOOT TELECOMMUNICATIONS GROUP ■ NEMONT TELEPHONE COOPERATIVE / PROJECT TELEPHONE COMPANY ■ TRIANGLE TELEPHONE COOPERATIVE / CENTRAL MONTANA COMMUNICATIONS | ■ RESERVATION TELEPHONE COOPERATIVE ■ RANGE TELEPHONE COOPERATIVE ■ LINCOLN TELEPHONE COMPANY ■ INTERBEL TELEPHONE COOPERATIVE | ■ MID-RIVERS COMMUNICATIONS ■ FRONTIER TELECOMMUNICATIONS ■ 3 RIVERS COMMUNICATIONS ■ RONAN TELEPHONE COMPANY | ■ HOT SPRINGS TELEPHONE COMPANY ■ SOUTHERN MONTANA TELEPHONE COMPANY ■ CENTURYLINK ■ NORTHERN TELEPHONE COOPERATIVE | ■ WEST RIVER COOP TELEPHONE COMPANY ■ UNASSIGNED AREA |
|---|---|--|--|--|

Source: Montana Telecommunications Association 2011

Rev. 10/07/11



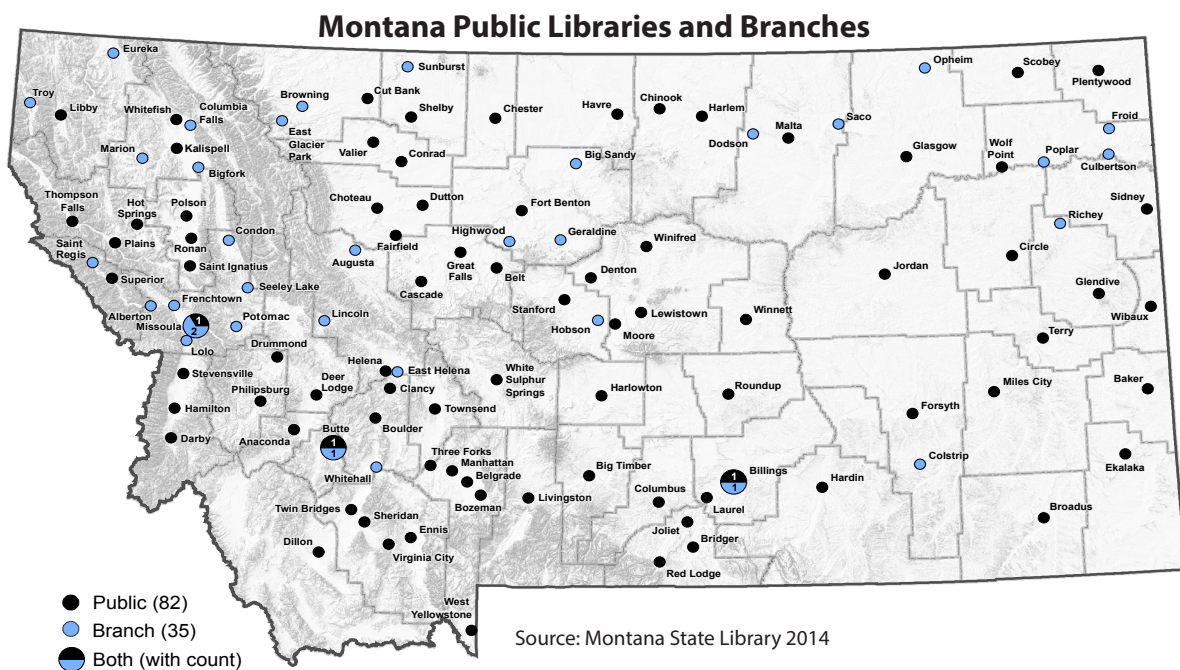
Libraries

Montana's libraries support education, employment, entrepreneurship and lifelong engagement

Highlights

- Montana's public libraries hold 4,465,788 items.
- Montanans visited their public libraries an average of 4.5 times throughout the year, for a total of 4,655,040 visits in 2013.
- MontanaLibrary2Go (statewide e-book collection) had an annual circulation of 470,030.
- Montana library patrons checked out 6,257,814 items in 2013, over 6 items per capita.
- Librarians in Montana's public libraries fielded 507,416 reference questions in 2013, or 9,758 questions per week.
- The Talking Book Library mail-delivered circulation averages over 213,000 annually; digital downloads average 17,500 annually.
- 100% of all Montana libraries provide Internet access to patrons.
- Nearly half of all Montanans (482,214) have a library card.

Source: Montana State Library 2014



Source: Montana State Library 2014

Public Libraries Increased State Aid Appropriation

The appropriation for state aid to libraries increased from \$102,830 in FY2013 to \$395,766 for FY's 2014-2017. These dollars directly benefit Montana communities. For example:

- We are now proctoring exams for college students, having health care navigators come and sign people up for health insurance and have our kids learning about computer programming. - Boulder Community Library
- After reorganizing post-retirement staff duties, we were able to upgrade a staff position from a library assistant to a Professional Librarian. We hired a Programming and Outreach Librarian in December 2013. - Imagine!F Kalispell
- The book club sets ...ensure that the cost of buying a new book each month will not deter a student from participating. - Joliet Public Library
- Our most important accomplishment was the creation and success of our Youth Garden Club. - North Valley Public Library



Community Garden sponsored by North Valley Public Library



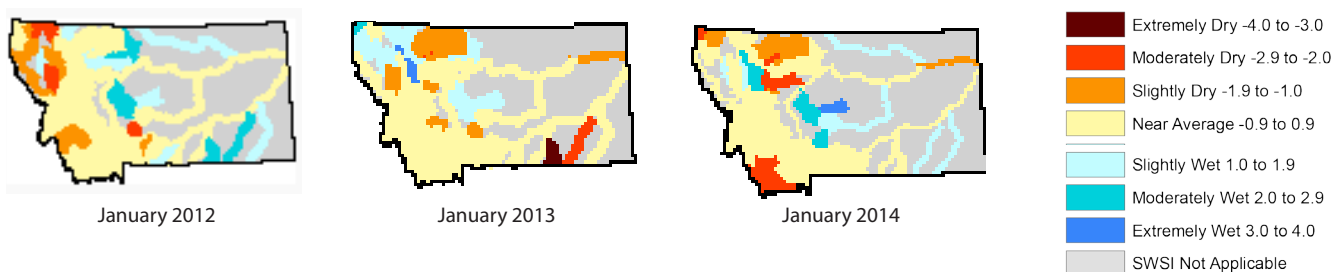
Montana's economy and way of life depend on the availability of water

Highlights

- The Draft State Water Plan is available at: http://dnrc.mt.gov/wrd/water_mgmt/state_water_plan/draft_mt_water_plan_low-res.pdf.
- The Water Information System (WIS) is the starting point for finding water resources information in Montana, such as data on surface water, groundwater, water quality, riparian areas, water rights, climate data and more; it is available at: http://geoinfo.msl.mt.gov/home/geography/water_information_system.aspx.
- The State Library works with the Natural Resource Conservation Service to publish monthly water supply maps. The current maps, along with an archive of monthly maps date back to 2002 (1992 for the Surface Water Supply Index maps) can be found at: http://mslapps.mt.gov/Geographic_information/Maps/watersupply/Default.aspx.
- Wetland Information Clearinghouse from the Department of Environmental Quality is available at: <http://deq.mt.gov/wqinfo/wetlands/default.mcp.x>.

Surface Water Supply Index Maps and Reports (available at:

http://apps.msl.mt.gov/Geographic_Information/Maps/watersupply/SurfaceWaterSupplyIndex/Default.aspx)



Source: U.S. Department of Agriculture Natural Resources Conservation Service and Montana State Library

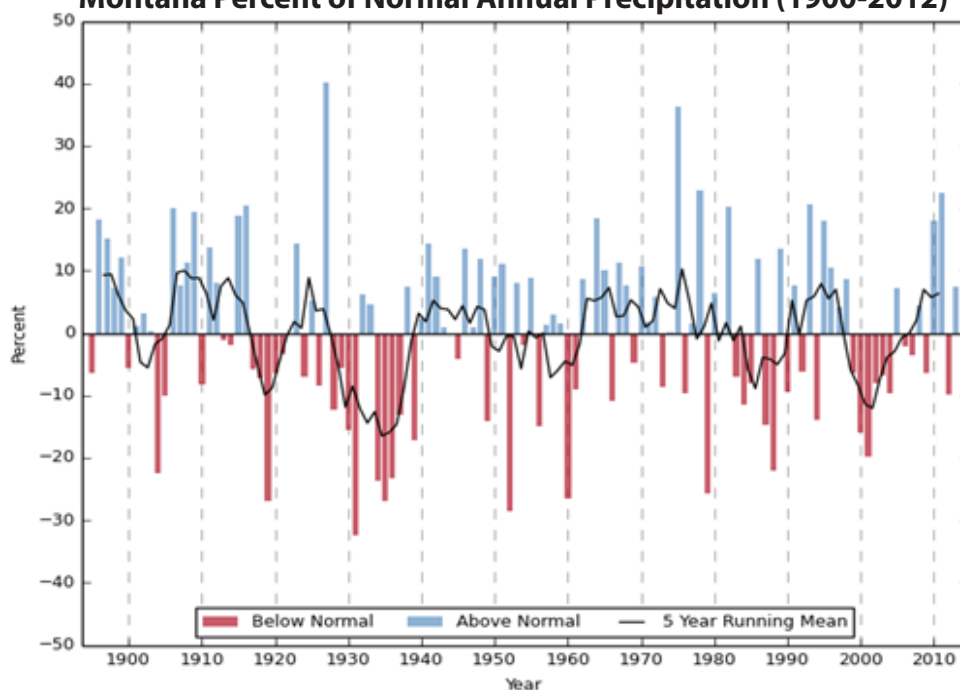
Montana Water Supply Resources

The Montana Governor's Drought and Water Supply Advisory Committee is charged with monitoring, forecasting, and reporting water supply and moisture conditions, enabling Montanans to make timely and informed decisions to mitigate drought impacts in a proactive manner.

For historic analysis, up-to-date information, and maps on Montana's current drought situation, visit:

<http://drought.mt.gov/> and
http://apps.msl.mt.gov/Geographic_Information/Maps/drought/

Montana Percent of Normal Annual Precipitation (1900-2012)



Source: Graph courtesy of Montana Climate Office; data from the National Data Center 2012

Montana's economy and way of life depend on the availability of water

Water Rights

The Department of Natural Resources and Conservation Water Adjudication Bureau assists the Montana Water Court in the adjudication of all claims to pre July 1, 1973 water rights. The Bureau examines all claims pursuant to Supreme Court rules and provides a summary report to the Water Court on each of the basins (85) in the state. Pursuant to legislation passed in 2005 the Bureau must complete the examination of the remaining 57,000 claims (as of 2005) by June 30, 2015. The map below shows the current status of the adjudication process. Visit http://dnrc.mt.gov/wrd/water_rts/.

Source: Department of Natural Resources and Conservation, Water Resources Division, July 2014

Basin Location and Adjudication Status

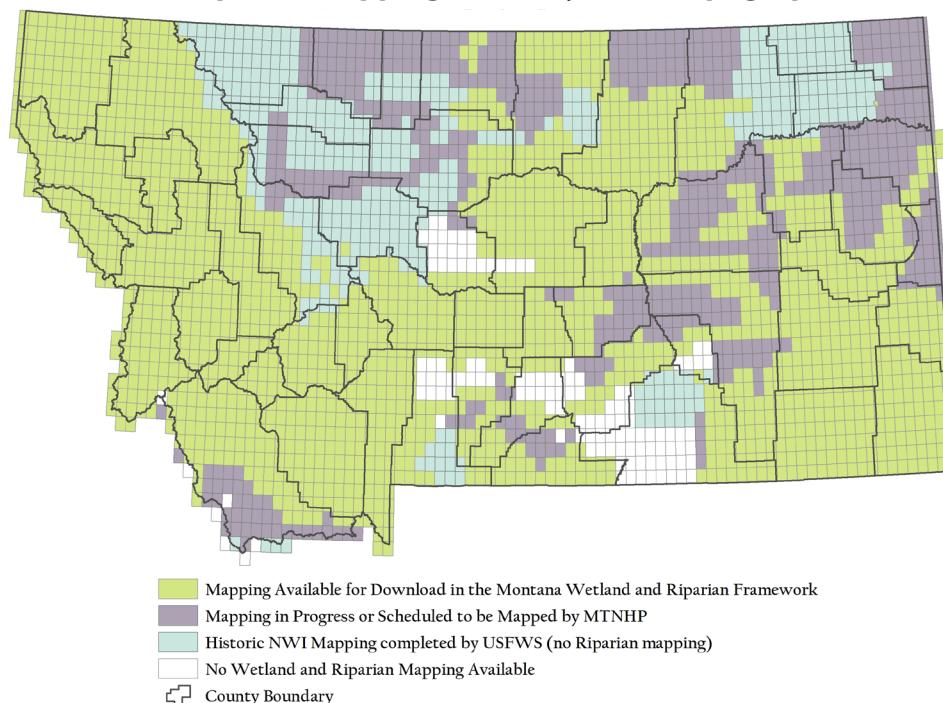
October 29, 2014



DNRC Water Rights Query System

The Montana State Library and Department of Natural Resources and Conservation (DNRC) have worked together to build the Water Rights Query System, which provides online access to the DNRC database of water rights information. For more information, visit <http://nris.mt.gov/dnrc/waterrights/>.

Wetland and Riparian Mapping Status by USGS Topographic Quad



Source: Montana Natural Heritage Program, October 2014



Montana's management of lands and natural resources has a significant influence on our environment, economy, and our quality of life

Highlights

- Nearly 65% of land in Montana is privately owned; over 18% is owned by the U.S. Forest Service.
- Of the acres in private agricultural use, 64% or 38,787,058 acres are used for grazing; 3% are irrigated crops.
- Montana Fish, Wildlife and Parks has over 450,000 acres of wildlife management areas, over 41,000 acres of state parks, and over 21,000 acres of fishing access sites.
- The Montana Land Reliance holds over 910,000 acres in conservation easements; a total of over 2.2 million acres are in easements across the state.
- There are over 7,000 miles of energy pipeline.
- 17,095 active energy wells (coal bed methane, gas, oil, etc.) exist in the state.

Source: Montana Department of Environmental Quality, Montana Board of Oil and Gas, Montana State Library, Montana Department of Revenue

Land Cover



Source: Montana Natural Heritage Program, October 2014

| | |
|-----|---------------------------------------|
| 27% | Grassland Systems |
| 21% | Forest and Woodland Systems |
| 20% | Human Land Use |
| 18% | Shrubland, Steppe and Savanna Systems |
| 6% | Recently Disturbed or Modified |
| 5% | Wetland and Riparian Systems |
| 3% | Sparse and Barren Systems |
| 1% | Alpine Systems |

Land Ownership



Source: Montana State Library, October 2014

| | |
|------------|---------------------|
| Light Blue | State Trust Lands |
| Green | U.S. Forest Service |
| Yellow | Rural Parcel |





Wildlife

Montana's wildlife data must be current and accurate to make informed management decisions

Highlights

For more information on animals, plants, and habitats in your area, visit the Montana Natural Heritage Program at <http://mtnhp.org>. Resources include:

- **MapViewer** (see below)– interactive maps and reports of animals, plants, land cover, wetlands, and land management (<http://mtnhp.org/mapviewer>)
- **Montana Field Guides** - an encyclopedia of the distribution, status, and biology of Montana's animals, plants, and habitats (<http://feldguide.mt.gov>)

MapViewer

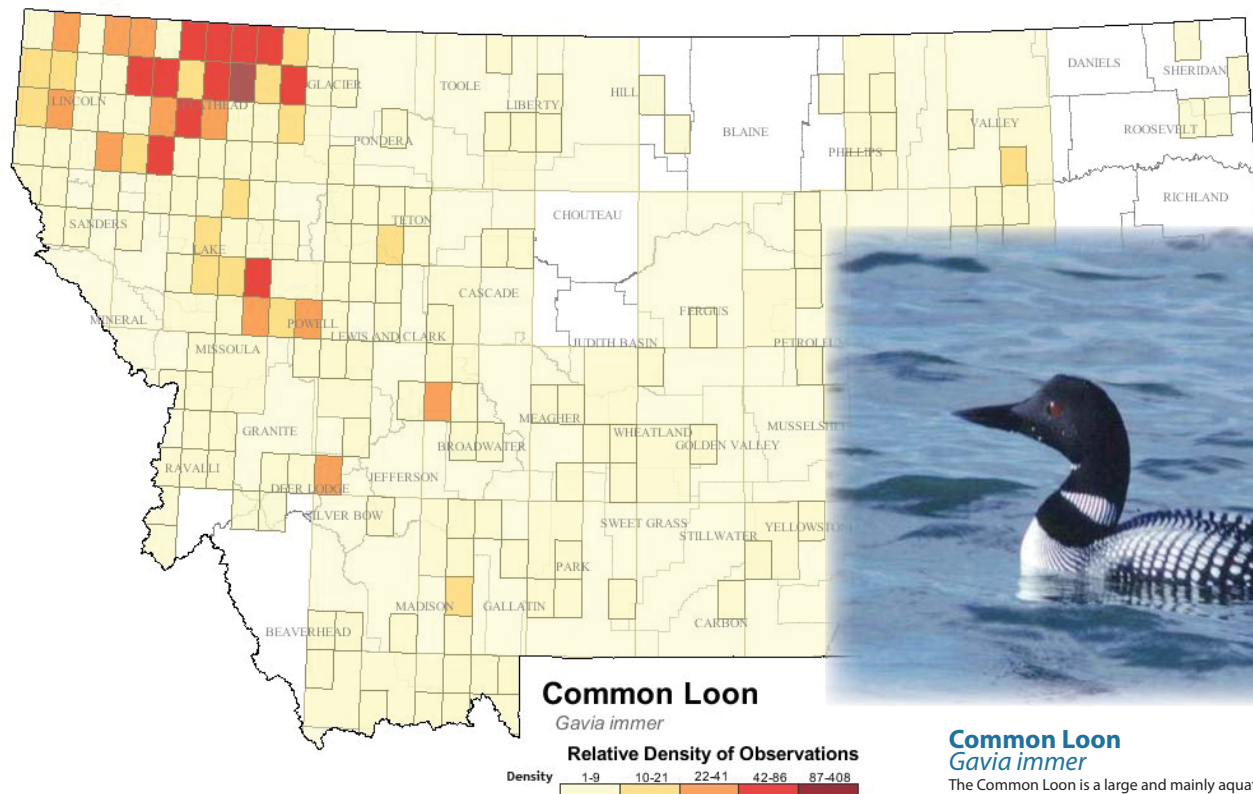


Native Wildlife Species in Montana and North America

| Species Group | Montana | North America | % in Montana |
|---------------|---------|---------------|--------------|
| Amphibians | 13 | 305 | 4% |
| Birds | 300 | 724 | 41% |
| Fish | 56 | 1639 | 3% |
| Mammals | 107 | 444 | 24% |
| Reptiles | 18 | 334 | 5% |

Source: NatureServe Explorer, October 2014

Montana Field Guides



Common Loon *Gavia immer*

The Common Loon is a large and mainly aquatic bird. Common Loons are known for their distinctive calls, three of which are heard on summer breeding lakes. The wail—a long almost mournful cry; the tremolo—a high pitched, rapid, five-beat call; and probably the best known is the yodel which is given only by males during territorial confrontations.

Source: Montana Natural Heritage Program, October 2014

District Details

| Demographics | Montana | Senate District 3 | House District 5 | House District 6 |
|--|---------|-------------------|------------------|------------------|
| Population | | | | |
| Population change | | | | |
| Total Population 2000 | 901,216 | 16,743 | 8,905 | 7,838 |
| Total Population 2010 | 989,415 | 19,822 | 9,869 | 9,953 |
| Percent of change from 2000 to 2010 Census | 9.79% | 15.53% | 9.77% | 21.25% |
| Age | | | | |
| Percent | | | | |
| Percent Under 5 Years | 6.30% | 5.11% | 5.17% | 5.04% |
| Percent 18 & Over | 77.40% | 78.67% | 80.55% | 76.80% |
| Percent 62 Years and Over | 18.50% | 18.52% | 18.35% | 18.70% |
| Percent 65 Years and Over | 14.80% | 14.27% | 14.28% | 14.26% |
| Percent 85 Years and Over | 2.00% | 1.59% | 2.20% | 0.99% |
| Bands | | | | |
| Age 0 to 17 | 223,563 | 4,229 | 1,920 | 2,309 |
| 18 to 24 Years | 94,611 | 1,244 | 667 | 577 |
| 25 to 44 Years | 235,809 | 4,788 | 2,679 | 2,109 |
| 45 to 64 Years | 288,690 | 6,733 | 3,194 | 3,539 |
| 62 Years and Over | 182,590 | 3,672 | 1,811 | 1,861 |
| 65 Years and Over | 146,742 | 2,828 | 1,409 | 1,419 |
| Under 5 Years | 62,423 | 1,012 | 510 | 502 |
| 15 to 19 Years | 66,724 | 1,168 | 512 | 656 |
| 18 & Over | 765,852 | 15,593 | 7,949 | 7,644 |
| 21 & Over | 724,590 | 15,028 | 7,695 | 7,333 |
| Sex | | | | |
| Males | 496,667 | 10,041 | 5,008 | 5,033 |
| Females | 492,748 | 9,781 | 4,861 | 4,920 |
| Race | | | | |
| Total Reported | | | | |
| White | 908,645 | 19,383 | 9,639 | 9,744 |
| Black or African American | 7,917 | 105 | 73 | 32 |
| American Indian and Alaska Native | 78,601 | 337 | 168 | 169 |
| Asian | 10,482 | 222 | 124 | 98 |
| Native Hawaiian and Other Pacific Islander | 1,601 | 34 | 21 | 13 |
| Some Other Race | 8,434 | 98 | 49 | 49 |
| Hispanic or Latino (of any race) | 28,565 | 437 | 254 | 183 |
| Not Hispanic or Latino | 960,850 | 19,385 | 9,615 | 9,770 |
| White Alone Not Hispanic | 868,628 | 18,744 | 9,269 | 9,475 |
| Households | | | | |
| Households - Units | | | | |
| Total Households | 409,607 | 8,437 | 4,465 | 3,972 |
| Households With Individuals Under 18 Years | 116,376 | 2,275 | 1,111 | 1,164 |
| Households With Individuals 65 Years and Over | 104,994 | 1,987 | 994 | 993 |
| Family Households | | | | |
| Family Households (Families) | 257,087 | 5,502 | 2,597 | 2,905 |
| With Own Children Under 18 Years | 106,102 | 2,130 | 1,046 | 1,084 |
| Married Couple Family | 201,611 | 4,585 | 2,086 | 2,499 |
| Married Couple Family - With Own Children Under 18 Years | 73,017 | 1,595 | 727 | 868 |
| Female householder No Husband Present | 37,045 | 573 | 334 | 239 |
| Female householder No Husband Present - With Own Children Under 18 Years | 22,286 | 339 | 220 | 119 |
| Nonfamily Households | | | | |
| Non Family Households | 152,520 | 2,935 | 1,868 | 1,067 |
| Householder Living Alone | 121,775 | 2,257 | 1,419 | 838 |
| Householder 65 Years and Over | 97,652 | 1,831 | 923 | 908 |

Housing

Housing Occupancy

| | | | | |
|---|---------|--------|-------|-------|
| Total Housing Units | 482,825 | 10,973 | 6,540 | 4,433 |
| Occupied Housing Units | 409,607 | 8,437 | 4,465 | 3,972 |
| Owner Occupied | 278,418 | 5,980 | 2,698 | 3,282 |
| Renter Occupied | 131,189 | 2,457 | 1,767 | 690 |
| Vacant Housing Units | 73,218 | 2,536 | 2,075 | 461 |
| Vacant for Rent | 10,082 | 316 | 274 | 42 |
| Vacant for Sale | 5,964 | 193 | 108 | 85 |
| Vacant for Seasonal, Recreation or Occasional Use | 38,510 | 1,808 | 1,559 | 249 |

Housing Tenure

| | | | | |
|--|---------|--------|-------|-------|
| Total Owner Units incl Units for Sale | 284,382 | 6,173 | 2,806 | 3,367 |
| Total Rental Units inc Units Vacant for Rent | 141,271 | 2,773 | 2,041 | 732 |
| Pop in Owner-occupied Units | 674,535 | 14,540 | 6,233 | 8,307 |
| Pop in Rented Units | 286,031 | 5,165 | 3,539 | 1,626 |

Education

Montana Senate District 3 House District 5 House District 6

Schools

| | | | | |
|-------------------|-----|---|---|---|
| Number of Schools | 824 | 9 | 3 | 6 |
|-------------------|-----|---|---|---|

Libraries

Montana Senate District 3 House District 5 House District 6

Library Type

| | | | | |
|---------------|-----|----|----|----|
| Total | 775 | 42 | 35 | 42 |
| Public | 82 | 2 | 2 | 2 |
| Branches | 35 | 2 | 1 | 2 |
| Bookmobiles | 5 | 0 | 0 | 0 |
| Academic | 27 | 2 | 2 | 2 |
| Institutional | 2 | 0 | 0 | 0 |
| School | 564 | 35 | 29 | 35 |
| Special | 57 | 1 | 1 | 1 |
| Other | 3 | 0 | 0 | 0 |

Land

Montana Senate District 3 House District 5 House District 6

Land Ownership (square miles)

| | | | | |
|-----------------------------------|--------|-----|----|-----|
| Private | 94,929 | 245 | 65 | 180 |
| Local government | 212 | 1 | <1 | <1 |
| Montana Fish, Wildlife, and Parks | 709 | 2 | <1 | 2 |
| State trust land | 8,140 | 88 | 12 | 75 |
| Other state land | 188 | <1 | <1 | <1 |
| US Bureau of Land Management | 12,665 | 247 | 36 | 211 |
| US Fish and Wildlife Service | 1,452 | <1 | <1 | <1 |
| US Forest Service | 26,677 | 366 | 14 | 351 |
| US National Park Service | 1,854 | <1 | <1 | <1 |
| Other federal land | 344 | <1 | <1 | <1 |

Sources

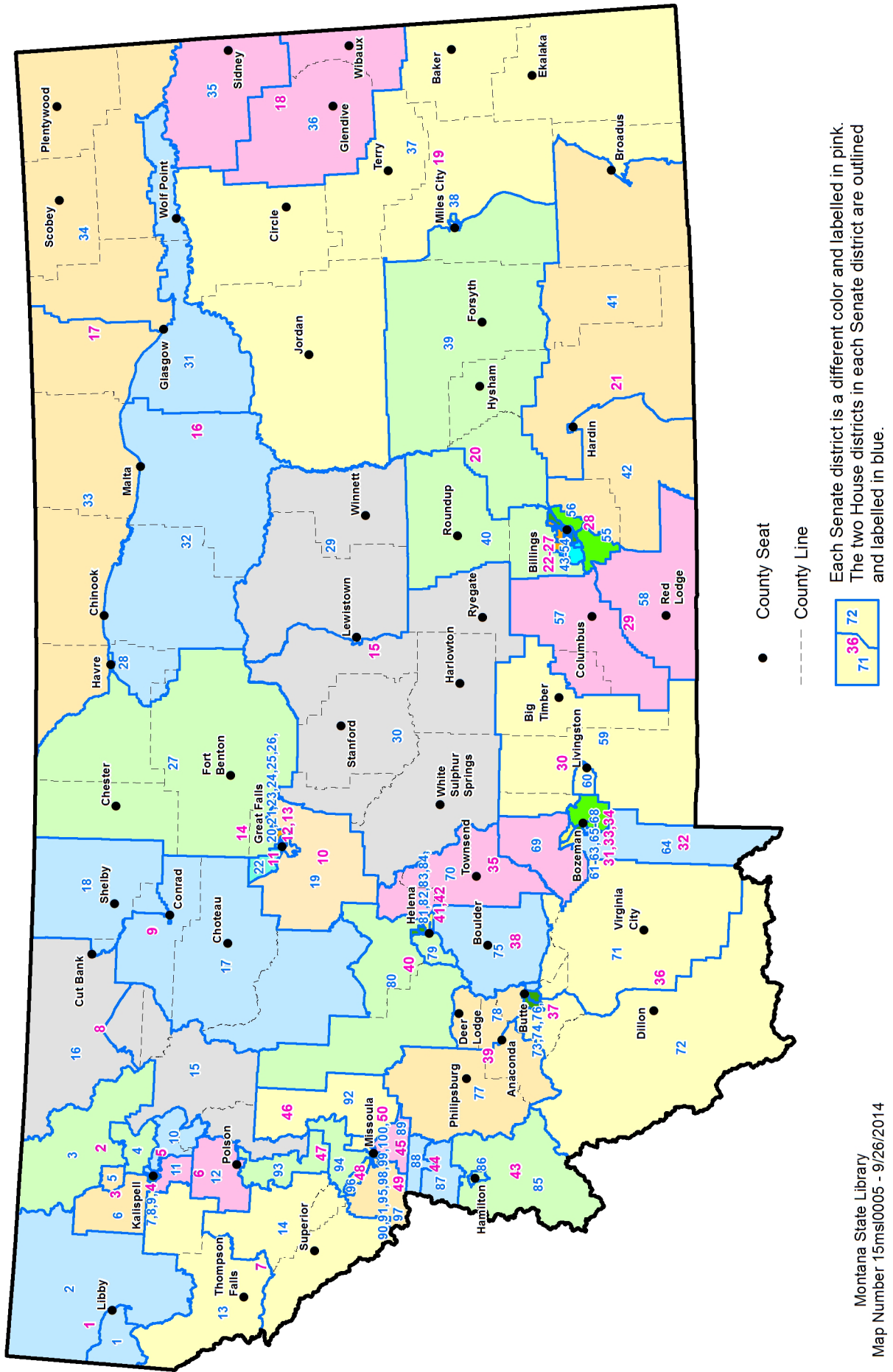
Montana Geographic Information Clearinghouse, Public and Private Land Ownership Maps, July 2014

Montana Office of Public Instruction

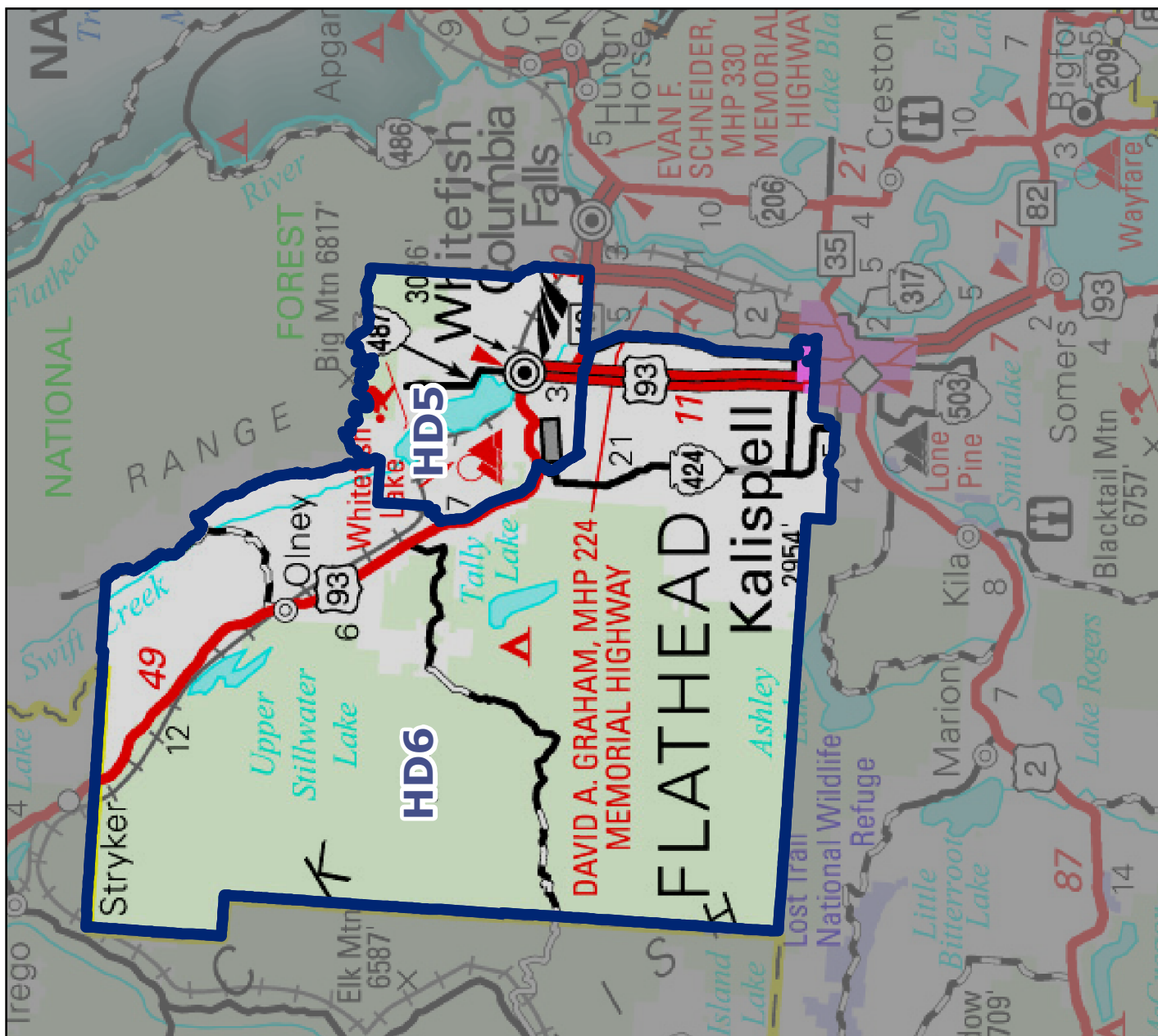
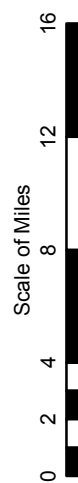
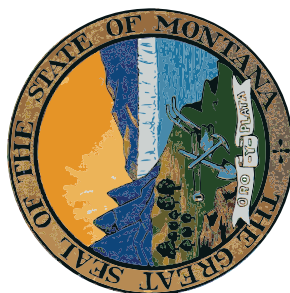
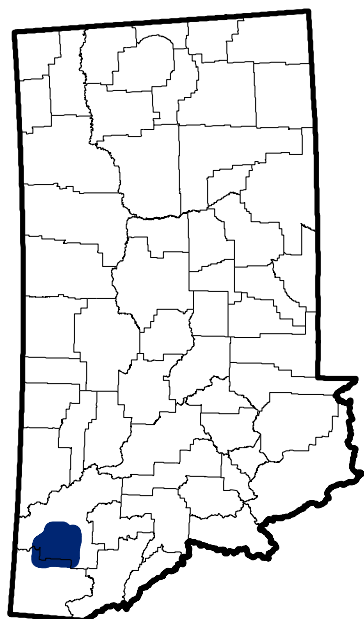
Montana State Library, Statewide Library Resources Division

U.S. Census Bureau, 2010 Census Summary File 1 - Profile of General Population and Housing Characteristics: 2010

Montana Legislative Districts, 2015 - 2023



Montana Senate District 3



For elections held in 2014 - 2022

Online Resources Directory



Montana State Library

1515 East 6th Avenue
PO Box 201800
Helena, MT 59620
(406) 444-3115

<http://msl.mt.gov>

Montana State Library In-House Partners

- Montana Fish, Wildlife & Parks
- Natural Heritage Program
- Natural Resources Conservation Service

<http://fwp.mt.gov>

<http://mtnhp.org>

<http://www.nrcs.usda.gov/wps/portal/nrcs/site/mt/home>

Montana State Agency Partners

- Department of Commerce
- Department of Environmental Quality
- Department of Public Health and Human Services
- Department of Justice
- Department of Labor and Industry
- Department of Natural Resources & Conservation
- Office of Public Instruction

<http://ceic.mt.gov>

<http://deq.mt.gov>

<http://dphhs.mt.gov>

<http://doj.mt.gov>

<http://dli.mt.gov>

<http://dnrc.mt.gov>

<http://opi.mt.gov>

Legislative Snapshot

http://msl.mt.gov/legislative_snapshot

