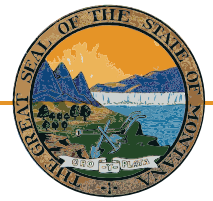


# Legislative Snapshot 2011



Includes information for the State of Montana,  
Senate District 9, and House Districts 17 and 18.

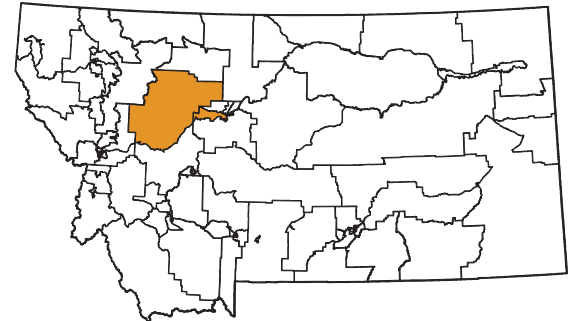
[http://msl.mt.gov/legislative\\_snapshot/](http://msl.mt.gov/legislative_snapshot/)



*Senate District 9*

**Senator Rick Ripley (R)**

8920 MT Highway 200  
Wolf Creek, MT 59648-8639



*House District 17*

**Representative Christy Clark (R)**

PO Box 423  
Choteau, MT 59422



*House District 18*

**Representative Jesse O'Hara (R)**

2221 Holly Court  
Great Falls, MT 59404-3562



# Letter from the Montana State Librarian

On behalf of the Montana State Library, I would like to welcome you to the 2011 legislative session. Our information experts have compiled this booklet to be a resource to you as you take on the important work of representing the collective needs of all Montanans and the special needs of your district during this legislative session.



As for past editions, we reviewed proposed bills and national and state trends related to what we believe will be major themes in this legislative session. To that end, you will find a wide range of information on our state's economy, energy production and development, and land and water use. Education is always an important issue, and you will find relevant information on our state's public schools and test scores, as well as on the libraries that help to augment what our schools do. While the drought seems to have subsided, our forests are now inundated by both blight and bark beetles, and you will be able to take a look at the most current information on maps available through the State Library. Finally, wildlife and recreation will always be an important part of Montana life, and we've pulled several highlights from our collection that might help to guide your decision-making this session.

The Montana State Library is a small and very unique agency. We employ not only librarians, but GIS and natural resource specialists and partner with botanists and zoologists, as well as federal and state agencies. We manage an enormous collection of state publications, as we simultaneously work to ensure that Montana's blind and physically disabled have access to reading materials and information.

We also work on behalf of all of Montana's libraries to help them provide the latest and best information and library services to their patrons – your constituents – whether it's downloadable books, public access computers, online resources, or just the latest bestseller. Without the Montana State Library leading the charge, Montana libraries would not be able to afford these resources and services for their patrons – all of which are being used in record numbers during these difficult economic times. In this age of information, most of which is only accessed online, the Montana State Library, through libraries across the state, provides a vital link that affects Montanans in a multitude of ways.

We created this book for you to not only to provide vital information to help you make difficult decisions in the coming months, but to demonstrate the power of what a diverse staff with amazingly diverse skills can do to make information in many different forms available to every Montanan. We are very proud of what we do here at the State Library as we work to empower Montanans by providing access to information, enhancing learning in families and communities, and building 21st Century skills.

We hope that you use this book throughout the session and stop by to see us – in person or virtually. Whether you visit us at our library or online, you will be able to browse our collection of government information, get help researching a specific issue, or find a quiet place to work or meet with colleagues. We are located one block east of the Capitol, behind the Montana Historical Society, at the north end of the Justice building. And of course, our services are available 24 hours a day, seven days a week at <http://msl.mt.gov>.

Sincerely,

A handwritten signature in black ink that reads "Darlene Staffeldt". The signature is written in a cursive, flowing style.

Darlene Staffeldt  
Montana State Librarian

## Senate District 9 House District 17 House District 18

### Table of Contents

2	Recent Performance of the Montana Economy and its Industries
5	Recovery
6	Demographics
8	Education
9	Libraries
11	Land
12	Water
13	Environmental Impacts
14	Energy, Mines
15	Wildlife and Recreation

### Appendices

- i Library Directory
- vii State of Montana Index

### Senate District 9 County Indexes

- viii Cascade County
- ix Lewis and Clark County
- x Powell County
- xi Teton County

### Maps

- xii Legislative Districts
- xiv Senate District 9

# Recent Performance of the Montana Economy and Its Industries

Source: Montana Department of Labor, Research and Analysis Bureau

The Montana economy has undergone significant changes in the past two years as the national recession impacted the state. Leading up to the recession, Montana was experiencing faster employment growth, larger wage growth, and lower unemployment than the nation as a whole. Over the 1997-2007 time period, employment in Montana grew at a rate of 2.1% per year – far surpassing the national growth rate of 1.1% and Montana’s long-term average of 1.2% from 1976 to 2009.

Montana continued to outperform the nation during the recession with payroll employment losses of 5.8% compared to 6.1% nationally. In fact, Montana had only two quarters of negative personal income growth in 2008 and 2009 compared to four quarters nationally. Our industry mix, more responsible borrowing and lending practices, and the momentum of the economy preceding the downturn all contributed to our above-average performance. Montana’s unemployment rate also outperformed the national rate. Montana’s unemployment rate increased by 2.7 points from 3.5% in 2007 to 6.2% in 2009, compared to a 4.7 point increase nationally to 9.7% in 2009.

Despite Montana’s better performance, there were a significant number of Montana workers who lost their jobs during the recession, and even Montanans who retained their jobs have experienced slower wage growth. The average wage increased from 2008 to 2009 by only 1.3%



to \$33,760; wage growth in prior years ranged from three to four percent.

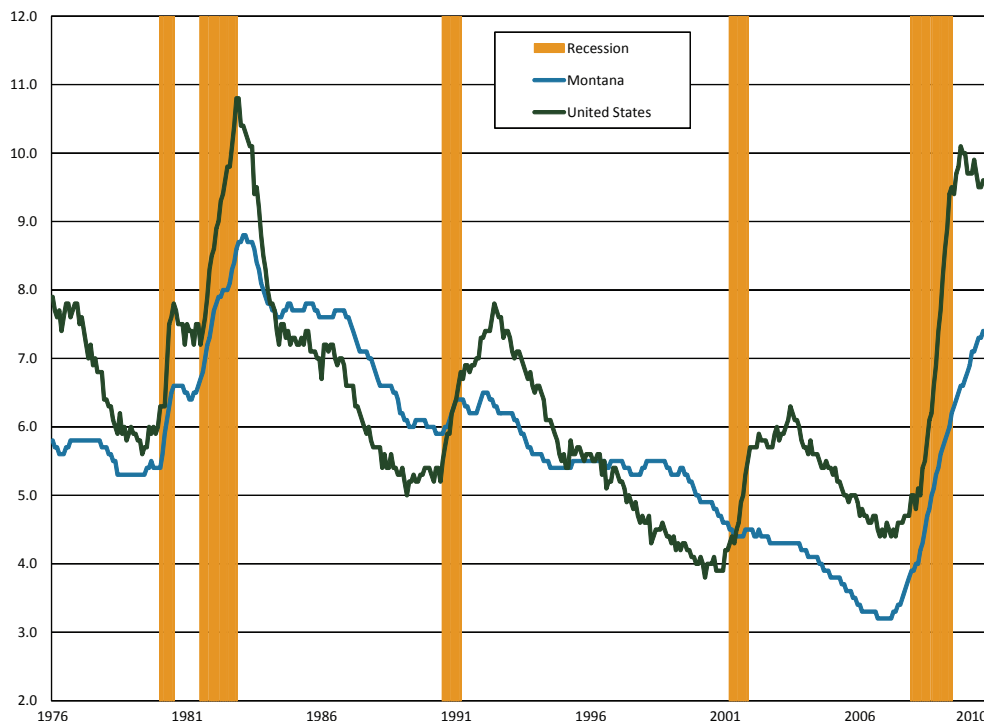
Although the recession is officially over and personal income growth has returned, job growth remains slow. Montana employment grew during the first half of 2010, but jobs were lost in the third quarter as government stimulus spending slowed. Some of this slow job growth is expected because strong labor productivity gains have reduced the demand for workers. Further, employment always lags an economic recovery. Figure 1 shows the U.S. and Montana unemployment rate since 1976 with

recessionary periods designated by the orange background. In recent recessions, the unemployment rate continued to increase after the recession officially ended.

There have been three industries that have continued to grow throughout the recession, helping to stabilize the Montana economy and providing job opportunities for dislocated workers from other industries – health care, public administration, and education. Public administration and education workers are predominantly hired by local, state, or federal governments, and benefited from government stimulus spending during the recession. Over 56% of government employment is hired at the local level, with 26% hired by the state. Government plays an important part of the Montana economy, comprising about 16% of GDP in 2008 and about 20% of employment during 2009. The industry also serves as a stabilizing, counter-cyclical force with slow growth in both economic prosperity and during downturns. Although government employment grew faster than private employment during this recession, private industry outpaced government hiring in the years leading up to the recession.

Health care was the fastest-growing industry during 2007-2009 with employment growth of 7.1% and a job gain of almost 4,100 workers from 2007 to 2009. Employment growth in health care has since slowed (see Figure 3). Health care related occupations, such as registered nurses, nurses’ aides, and home health care aides, are expected to continue to grow as the baby boom generation ages and demands more health care services. The growing health care occupations may provide employment opportunities for many workers who lost their jobs during the recession.

**Figure 1. U.S./Montana Unemployment Rates and Recession**



One way to examine the long-term impact of the recession on Montana's economy is to divide the industries into three categories based on their roles in the economy – base industries, consumer industries, and business-support industries. Base industries bring new money into Montana through exports and help drive growth in other industries through the increase in wealth. In Montana, these industries are generally natural resource based and include agriculture, mining, energy, manufacturing, and timber. According to the Montana Department of Commerce, the top exports from Montana are bulk wheat, inorganic chemicals, and industrial machinery. Table 2 lists these exports. In addition, federal government services can be thought of as a base industry in Montana because we receive more federal spending than what is paid by Montanans in federal taxes. Tourism can also be a base industry, although many of Montana's tourists come from within the state.

**Table 2. Top 10 Exports from Montana Worldwide in Millions of U.S. Dollars**

Rank	Export Category	Value (Millions of U.S. Dollars)
1	Bulk Wheat	447.40
2	Inorganic Chemicals	305.00
3	Industrial Machinery	156.00
4	Mineral Fuel, Oil, etc.	66.00
5	Ores, Slag, Ash	65.30
6	Vehicles, Parts, and Accessory Items	58.40
7	Organic Chemicals	57.70
8	Salt, Sulfur, Earth, and Stone	42.30
9	Paper & Paperboard	33.00
10	Miscellaneous Chemical Products	29.20

Source: Montana Department of Commerce Census and Economic Information Center

During 2008, the agriculture, mining, and energy sectors benefited from high commodity prices and were able to bring wealth into the state to support the state's economy during the first year of the downturn. Commodity prices decreased to long-term trends during 2009, however, leading to a 13% job loss in the mining industry from 2007-2009. Mining employment is relatively small, however, and the mining job loss was less than 1,000 workers. With stronger commodity prices in 2010, mining employment has regained many of their lost jobs. Figure 3 tracks employment levels in mining and other industries during the recession.

However, other base industries in Montana were more severely harmed by the recession. In particular, Montana manufacturers faced plant closures and job losses of over 3,000 jobs (14.8%) from 2001-2009 because of low worldwide demand for their products. Because many manufacturing processes are energy intensive, high energy prices harmed the manufacturing industry even while helping Montana's energy production industries. Over 53% of the manu-

facturing losses occurred in the wood products manufacturing industry and were related to the national downturn in the housing market. The wood products industry lost approximately 1,600 jobs in the past two years. Because the national housing market is expected to recover slowly, and because plant closures and mass layoffs have left holes in the supply chain for many manufacturers, the recession is likely to have long-term impacts on the logging and manufacturing industries in Montana.

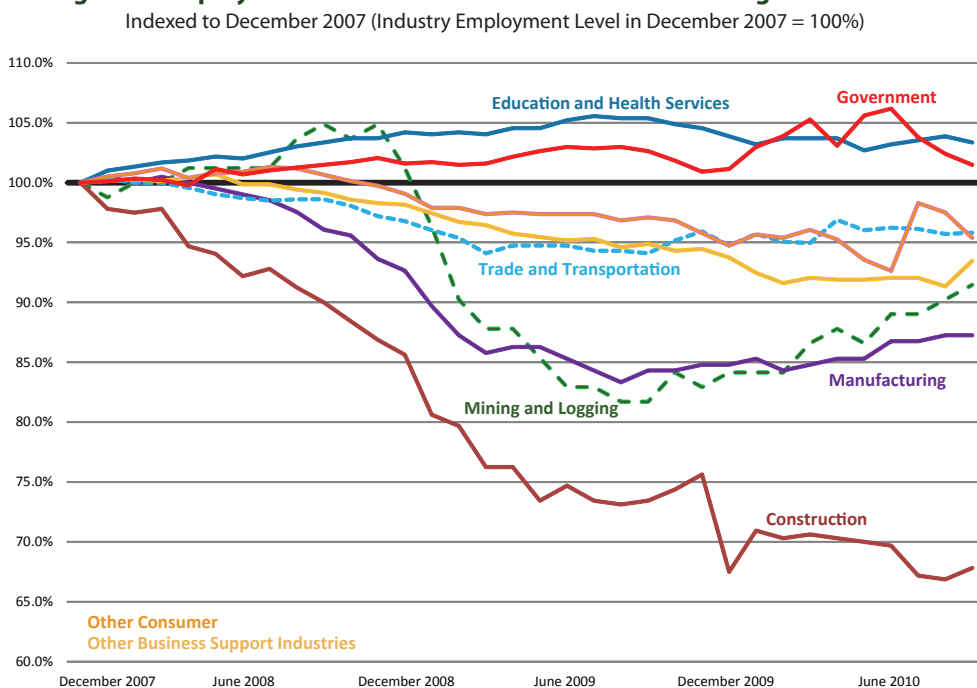
The new wealth brought into Montana by base industries drives economic growth in consumer-based industries. Consumer-based industries are industries where growth depends on an increase in population or income, such as construction, retail, health care, or entertainment. As large employers, consumer-based industries play a large role in our economy. However, these industries tend to pay lower wages because of a predominance of lower-skilled jobs. Consumer-based industries made up 61% of Montana's employment, but paid only 52% of wages in the second quarter of 2010.

With the large loss of jobs in manufacturing, wood products, and in other base industries, Montanans had less money to spend in consumer-based industries, resulting in further job losses. The construction industry was the worst hit industry with over 8,300 lost jobs from 2007 to 2009 – a decline of 24.2%, with job losses continuing in 2010. Construction jobs represent over 55% of the total number of jobs lost during the recession. The retail industry faced losses of over 3,700 jobs, but the percentage of jobs lost is smaller at 5.0% due to the large size of the industry.

Finally, the third industry category is business support industries, which require a nexus of economic activity to prosper. Business support industries, such as transportation and warehousing, wholesale, professional services, and administrative support services, depend on the growth of other industries. As the recession affected other industries in the state, the business support industries experienced a slow and steady decline in jobs. Losses in these industries are not as severe as the losses in construction, manufacturing, and retail, ranging from two to four percent of the 2007 employment. Business support services will need other industries to have stronger growth before regaining employment. In the long-term, continuing either amenity-driven population growth or economic growth will allow business support industries to prosper.

In summary, the Montana economy remains fairly reliant on traditional natural resource-based industries to bring in new money into the state. Many of these base industries will join the nation in economic recovery, but the recession's impacts on the wood products industry and on some manufacturers may be long-lasting. The performance of these base industries will drive growth in the consumer-based and service industries. Consumer-based industries were the fastest growing industries prior to the recession, and employ the majority of the state's workforce. As job and wage growth resumes as a part of economic recovery, consumer-based industries should prosper. Finally, the business support industries depend on a nexus of population and industry. All of these industries are interconnected and rely on each other for success.

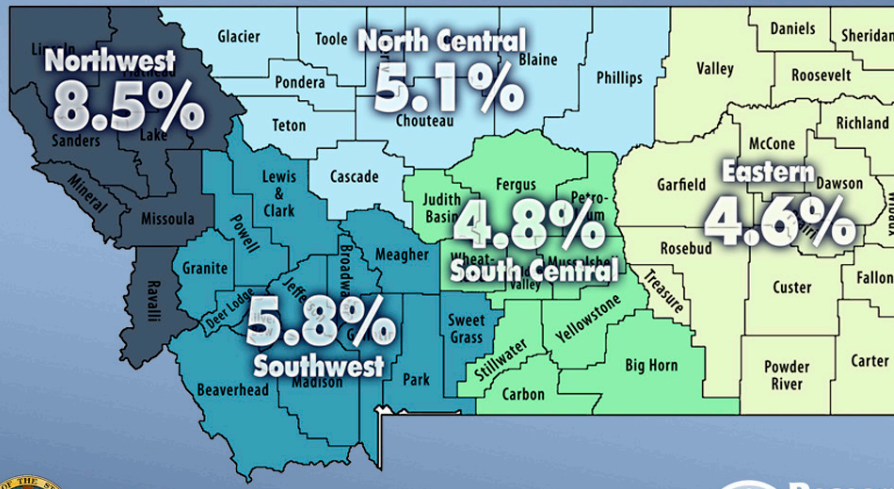
**Figure 3. Employment in Selected Montana Industries during the Recession**







## 2009 Annual Unemployment Rates by Region



Montana  
Department of Labor and Industry



Figure 4

### Montana's Regions

The Northwestern portion of Montana felt the impact of the recession most acutely, largely because the region had a large concentration of construction, wood products, and manufacturing workers. All of these industries had large employment losses during the recession. The 2009 average unemployment rate for this region was 8.5%, as shown in Figure 4. In comparison, all other regions had unemployment rates of less than 6%.

In contrast, the Eastern portion of Montana has higher concentrations of employment in utilities and public administration than does the Western portion of the state, with a nearly average concentration in health care. The growth of these industries supported the Eastern Montana economy during the recession. In addition, the Eastern region was not as heavily reliant on the declining industries of construction, retail, and manufacturing as were other parts of the state. Further, the agriculture and mining industries posted relatively strong performances during 2008 due to high commodity prices, although these industries retracted when commodity prices declined.

Despite larger job losses in the Western portion of Montana, the Northwest and Southwest regions still have more jobs than other parts of the state. The more vibrant economies of Western Montana will likely regain their status as economic drivers of our state as the economy recovers from the recession.

### Challenges to the Montana Economy

#### Reducing Unemployment

Although the recession is officially over, the Montana economy continues to face challenges as it exits the recession. The first and foremost of these challenges is to reduce unemployment by adding more jobs and ensuring that our workforce has the skills to fill the new jobs. Although our overall job growth depends on the economic performance of the U.S. and global economy, out-of-work Montanans can prepare themselves for opportunities when job growth resumes. Many industries, particularly construction and retail, have lost so many jobs that it will be difficult for workers to find jobs in their old occupation. For example, the Montana economy is expected to add over 100 new carpenter jobs per year as the economy recovers, but about 2,000 carpenters lost their jobs in the last two years, still leaving many of these workers without a job. These workers need to be retrained for

### Percent Change in Property Values Due to Reappraisal

	Residential	Commercial	Agricultural	Forest Land	Total
Montana	1.76	2.46	-4.66	-6.72	5.19
Cascade County	-1.33	2.93	-3.64	-2.50	2.59
Lewis and Clark County	1.02	2.58	-1.39	0.87	4.47
Powell County	0.69	3.96	-2.34	-4.42	3.79
Teton County	-0.83	0.29	-5.64	-3.77	0.90

Source: Montana Department of Revenue

jobs that have continued to grow throughout the recession, like those in the health care industry, in order to shorten their period of unemployment.

### Aging Workforce

A longer-term challenge for the Montana economy is our aging workforce. According to the U.S. Census Bureau's population projections, the percentage of the Montana population that will be over the age of 65 is expected to reach 25% by 2030, making Montana one of the oldest states in the nation. The aging of our population will likely have obvious impacts on our economy, such as increased demand for health care, greater demand for the arts, and changes in state spending for both education and Medicare. The aging of the Montana population will likely drive changes in Montana's education system as well. There will be fewer young people graduating from Montana high schools and more non-traditional students in the Montana University System.

The aging of the population will also cause significant tightening of Montana's labor force. The U.S. Census Bureau's population projections indicate that the working age population in Montana (ages 18-65) will start to decrease starting in

2014, leaving businesses with fewer candidates for job openings. The recession has reduced the urgency posed by the changing demographics of Montana's workforce because of higher unemployment and because the loss of wealth during the recession has caused many workers to delay retirement. However, as our economy recovers, Montana's older workers will be leaving the workforce. Businesses need to plan for the loss of the knowledge and experience held by these workers and for the potential of a tight labor market in the future.



## Federal ARRA Funds Awarded to Federal Agencies for Projects in Montana

Federal agency recovery awards granted in Montana as reported by recipients.

	Awards	Total Funds Awarded	Funds Per Capita	Funds Received	Local Amount	Jobs Reported
Corps of Engineers	83	31,119,433	32	12,052,085	23,750,292	125.58
Department of Agriculture	522	228,999,873	235	45,362,231	228,648,750	569.87
Department of Commerce	10	24,710,932	25	3,197,892	28,687,567	6.71
Department of Defense (except military departments)	3	940,714	1	891,041	940,714	
Department of Education	641	254,783,938	261	142,782,232	254,566,583	1,681.61
Department of Energy	137	98,884,317	101	25,668,316	125,125,460	209.27
Department of Health and Human Services	270	99,411,947	102	39,551,704	101,083,953	336.32
Department of Homeland Security	27	46,927,021	48	9,923,330	47,688,814	82.01
Department of Housing and Urban Development	50	40,575,921	42	26,026,787	40,575,921	278.39
Department of Justice	106	46,648,742	48	11,105,801	47,835,290	125.01
Department of Labor	60	20,950,269	21	13,009,832	18,718,090	95.82
Department of the Air Force	79	46,081,356	47	19,849,329	43,993,659	55.94
Department of the Army	1	2,527,200	3	2,137,556	2,527,200	11
Department of the Interior	211	121,136,937	124	72,050,481	121,150,873	641.28
Department of the Treasury	2	2,600,000	3	2,600,000	2,600,000	
Department of Transportation	164	292,750,431	300	206,123,442	290,768,051	965.16
Department of Veterans Affairs	12	4,647,311	5	528,439	4,647,311	6.02
Environmental Protection Agency	134	50,383,953	52	38,756,242	50,333,953	76.01
Executive Office of the President	1	13,574	0	13,574	13,574	
General Services Administration	47	66,616,969	68	5,491,124	54,870,279	31.46
National Aeronautics and Space Administration	3	99,784	0	99,784	218,958	0.44
National Foundation on the Arts and the Humanities	5	416,000	0	382,430	416,000	6.63
National Science Foundation	40	21,113,454	22	4,328,693	21,100,349	42.66
Other Independent Agencies	6	1,171,481	1	1,137,555	1,171,481	39.41
Unassigned	3	0	0	0	705,779	
<b>Total</b>	<b>2,617</b>	<b>1,503,511,558</b>	<b>1,542</b>	<b>683,069,899</b>	<b>1,512,138,901</b>	<b>5,386.60</b>

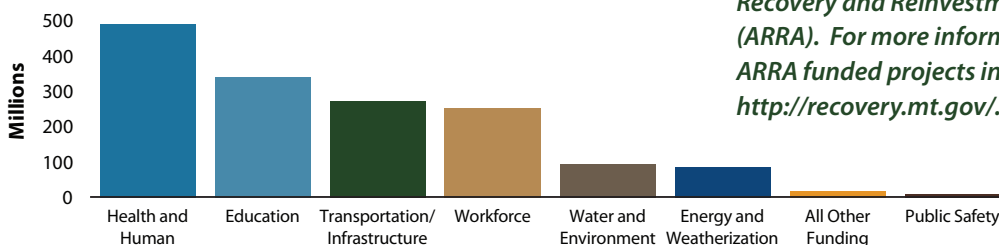
Source: Recovery.gov, November 2010

## Broadband Technology Opportunity Program

Under the Broadband Technologies Opportunity Program (BTOP) and in partnership with the Bill & Melinda Gates Foundation, the Montana State Library will partner with 42 of Montana's public libraries to expand access to free, high-speed internet to 86% of the state's population by 2013. Though most local libraries have computers with internet access, many do not have enough computers, fast enough broadband speeds, or ADA-accessible computer facilities to provide adequate services for the thousands of Montanans who need it. As a result, library patrons currently have long wait times of up to two hours for computers, as well as unacceptably slow browsing speeds that inhibit library patrons' ability to apply for social services, find jobs, or complete research.

<http://www.msl.mt.gov/btop/>

## Montana Reinvestment Act Project Categories



Source: <http://recovery.mt.gov/>, December 2010



## 2009 Montana ARRA Funds Awarded

County	Amount
Beaverhead	15,160,291
Big Horn	26,179,900
Blaine	11,507,677
Broadwater	4,472,857
Butte Silver Bow	49,695,135
Carbon	8,354,553
Carter	11,359,144
Cascade	78,805,111
Chouteau	3,243,647
Custer	10,868,688
Daniels	1,539,206
Dawson	9,272,730
Deer Lodge	9,141,378
Fallon	9,656,539
Fergus	14,960,424
Flathead	117,634,647
Gallatin	137,761,188
Garfield	726,212
Glacier	28,838,902
Golden Valley	715,716
Granite	3,382,894
Hill	20,518,576
Jefferson	25,233,220
Judith Basin	1,761,204
Lake	42,073,433
Lewis & Clark	72,455,559
Liberty	1,792,032
Lincoln	23,183,008
Madison	6,386,980
McCone	2,253,416
Meagher	7,682,950
Mineral	8,395,247
Missoula	141,742,279
Musselshell	3,633,199
Park	15,500,397
Petroleum	432,552
Phillips	12,798,377
Pondera	7,460,172
Powder River	1,243,929
Powell	16,419,596
Prairie	1,300,842
Ravalli	41,595,559
Richland	5,167,813
Roosevelt	24,451,178
Rosebud	15,271,410
Sanders	15,697,306
Sheridan	4,821,528
Stillwater	9,221,276
Sweet Grass	4,612,903
Teton	9,018,958
Toole	6,468,309
Treasure	460,621
Valley	5,686,257
Wheatland	1,636,591
Wibaux	1,871,705
Yellowstone	133,317,560
Pass through to states	16,188,675
Statewide	331,827,343
Unallocated	18,219,767

Source: [www.recovery.mt.gov/](http://www.recovery.mt.gov/), November 2010

# Demographics

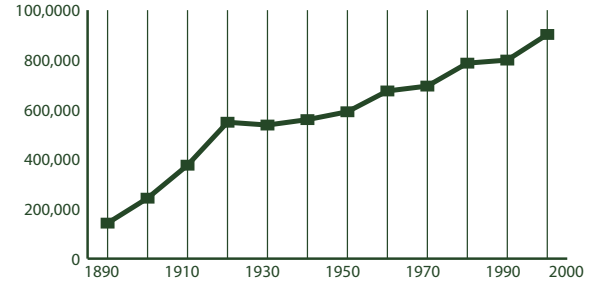
## 2008 Poverty and Median Income Estimates

Montana ranked 42nd among all U.S. states for median income in 2008.

	Median Household Income	% in Poverty All Ages	% in Poverty Ages < 18
United States	52,029	13.2	18.2
Montana	43,948	14.1	19.2
Cascade County	42,528	13.6	19.6
Lewis and Clark County	49,959	10.7	13.6
Powell County	38,836	17.4	21.4
Teton County	40,111	12.8	17.3

Source: U.S. Census Bureau, Small Area Estimates Branch

## Montana Historic Population Growth 1890 - 2000 Censes



Source: U.S. Census Bureau Population

## Population Growth in Montana and Selected Counties

Montana's population density is about 6.5 persons per square mile.

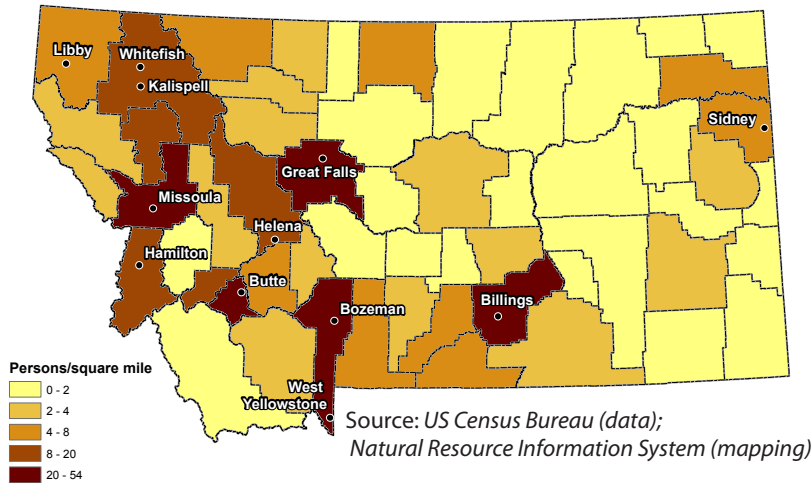
	2000 Census	2009 Estimate	Percent Growth
United States	281,421,906	307,006,550	.09
Montana	902,195	957,861	.08
Cascade County	80,357	82,178	2.27
Lewis and Clark County	55,716	61,942	11.17
Powell County	7,180	7,089	-1.27
Teton County	6,445	6,088	-5.54

Source: U.S. Census Bureau

Look for preliminary 2010 Census data available from the US Census Bureau beginning in February, 2011 <http://2010.census.gov/>



## 2008 Population Density Estimates - Total Persons



## 2009 Population Estimates

Montana	
Male	487,981
Under 5 years	31,949
Under 18 years	112,780
18 to 64 years	310,778
65 years and over	64,423
Female	487,008
Under 5 years	30,489
Under 18 years	107,048
18 to 64 years	302,480
65 years and over	77,480
<b>Total</b>	<b>974,989</b>

Source: US Census Bureau, Population Estimates Program

## Housing Units for Selected Counties

According to the U.S. Census Bureau, the total number of housing units in Montana increased 6.9% during this period.

	2000	2001	2002	2003	2004	2005	2006	2007	2008	2009	% Change
Cascade County	35,225	35,308	35,411	35,464	35,591	35,734	35,960	36,192	36,417	36,526	3.69
Lewis and Clark County	25,672	25,812	25,855	25,943	26,042	26,248	26,452	26,577	26,674	26,687	3.95
Powell County	2,930	2,931	2,931	2,927	2,923	2,941	2,936	2,929	2,924	2,916	-0.48
Teton County	2,910	2,913	2,915	2,911	2,913	2,921	2,919	2,921	2,917	2,911	0.03

Source: U.S. Census Bureau, Population Estimates



# Demographics

## Corrections - Inmate Population

	2004	2005	2006	2007	2008	2009
Male Prison Beds	2,005	2,180	2,252	2,258	2,170	2,245
Montana State Prison - Deer Lodge	1,325	1,430	1,458	1,463	1,391	1,416
Great Falls Regional Prison	149	151	151	147	143	150
Dawson County Regional Prison - Glendive	140	141	142	142	141	143
Crossroads Correctional Center - Shelby	391	458	501	506	495	536
Actual population_male	2,005	2,180	2,252	2,258	2,170	2,245
Female Prison Beds	171	192	233	209	165	185
Montana Women's Prison - Billings	164	186	218	191	148	168
Intensive Challenge Program - MWP - Billings	7	6	15	18	17	17
Actual population_female	171	192	233	209	165	185

Source: Montana Department of Corrections, May 2010

## Employment Status of Montana Women

In 2009, the Interagency Committee for Change by Women (ICCW) conducted a survey of women in the workforce. For more information visit <http://www.mdt.mt.gov/iccw/surveys/wwork.shtm>.

	1978	2009
Total Employed	45.30	94.7
Full-Time	30.50	84
Part-Time	14.80	10.6
Total Not Employed	54.60	5
Non-working	39.80	4.6
Retired	12.50	0.6
Disabled	2.3	0.1

Source: 2009 Survey of Women and Work

## Montana Sexual or Violent Offender Registry Number of Convictions by Offense

Arson	94
Assault (including Aggravated Assault)	1,727
Dangerous Drugs	82
Family Offense	619
Homicide	138
Incest With A Minor	116
Kidnapping	76
Other	101
Robbery	536
Sex Offense	187
Sexual Assault	2,333
<b>Total</b>	<b>6,004</b>

Source: Department of Justice, Montana Sexual or Violent Offender Registry, September 2010

## Veteran Population Projections

Montana is ranked second among the states for percent of the civilian population 18 years and over who are veterans. (13.9 percent, 2006-2008 American Community Survey)

	2000	2010	2020	2030
Montana	108,330	102,015	89,052	76,230
Cascade County	11,555	10,604	8,402	6,887
Lewis and Clark County	7,016	6,578	5,907	4,926
Powell County	1,164	1,074	888	752
Teton County	737	601	447	334

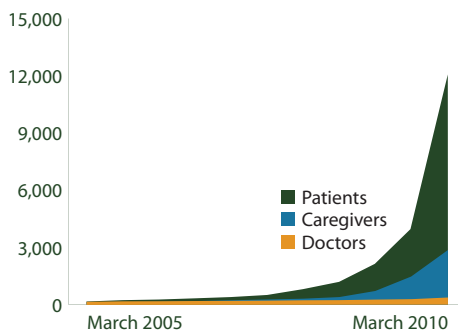
Source: United States Department of Veteran Affairs, October 2007

## Montana Children and Social Services

	Children's Population 2008	Percent of Children in Poverty 2008	Free/Reduced Price Lunch Eligibles 2008/09	Daycare Program Participants* 2007	Special Education Program Enrollment 2008/09	Healthy Montana Kids Enrollment 2009	Medicaid Enrollment 2009
Montana	220,358	21.0	51,333	8,051	17,636	17,465	46,463
Cascade County	20,256	19.6	3,958	1,307	1,356	1,209	3,511
Lewis and Clark County	13,777	13.6	2,672	575	1,143	856	2,537
Powell County	1,154	21.4	266	46	201	114	259
Teton County	1,318	17.3	402	49	124	127	160

Source: MontanaKidsCount, <http://montanakidscount.org/> \*facilities participating in state program

## Montana Medical Marijuana Use Program



Source: Montana Medical Marijuana Program, June 2010

## Temporary Assistance For Needy Families (TANF) Comparison

	2005 Cases	2005 Case Avg	2009 Cases	2009 Case Avg	Apr 2010 Cases	Apr 2010 Case Avg
Montana	4,820	356	3,466	392	3,784	426
Cascade County	442	335	250	350	253	389
Lewis and Clark County	245	350	204	369	219	403
Powell County	18	313	15	374	20	421
Teton County	9	317	10	373	10	431

Source: Montana Department of Public Health and Human Services, April 2010



# Education

## Schools in Senate District 9

There are 832 public K-12 and 14 private accredited schools in Montana. Montana also has 15 public, 6 private, and 7 tribal colleges. Senate and House district figures in the table below show the number of schools located in cities within 10 miles of the district's boundaries.

	Montana	Senate District 9	House District 17	House District 18
High Schools	173	55	17	45
Middle Schools	213	62	28	49
Elementaries	446	255	63	214
<b>Total</b>	<b>832</b>	<b>372</b>	<b>108</b>	<b>308</b>

Source: Office of Public Instruction, September 2010

## Montana School Size and Enrollment 2009 - 2010

School Size	Percent of Schools	Enrollment	Percent of Enrollment
>500	6	42,927	30
250 to 499	19	56,027	40
100 to 249	19	26,444	19
50 to 99	14	8,563	6
<50	41	7,846	6
<b>Total</b>	<b>100</b>	<b>141,807</b>	<b>100</b>

Source: OPI Facts About Montana Education, September 2010

## School Districts - Number of in Area

	Senate District 9	House District 17	House District 18
Elementary	26	23	2
Secondary	14	12	2
Unified	3	3	1
<b>Total</b>	<b>43</b>	<b>38</b>	<b>5</b>

Source: Montana Base Map Service Center, November 2009

## Montana Dropout Rate - Percent of Total Enrollment

Grade / Gender	2004-05	2005-06	2006-07	2007-08	2008-09	5-yr Average
7 & 8 Total	0.2%	0.2%	0.3%	0.3%	0.3%	0.2%
Male	0.2%	0.2%	0.3%	0.3%	0.4%	0.3%
Female	0.1%	0.2%	0.3%	0.3%	0.2%	0.2%
HS Total	3.3%	3.6%	3.7%	5.2%	5.1%	4.2%
Male	3.6%	3.9%	4.2%	5.5%	5.6%	4.5%
Female	3.1%	3.3%	3.2%	4.8%	4.6%	3.8%
Overall Total	2.3%	2.5%	2.7%	3.6%	3.6%	2.9%
Male	2.5%	2.7%	3.0%	3.9%	3.9%	3.2%
Female	2.1%	2.3%	2.3%	3.4%	3.2%	2.6%

Source: Montana Statewide Graduate and Dropout Report, 2008 - 2009 School Year

## 2009 Youth Risk Behavior Survey - Percentage of Respondents

		1995	1997	1999	2001	2003	2005	2007	2009
Drove when drinking alcohol during the past 30 days	U.S.	15.4	16.9	13.1	13.3	12.1	9.9	10.5	9.7
	Montana	27.4	26.7	22.7	21.8	20.4	18.5	16.0	13.5
Rode with a driver who had been drinking alcohol during the past 30 days	U.S.	38.8	36.6	33.1	30.7	30.2	28.5	29.1	28.3
	Montana	48.1	46.6	43.1	39.3	36.9	34.4	32.9	28.8
Carried a weapon (gun, knife, or club) during the past 30 days	U.S.	20.0	18.3	17.3	17.4	17.1	18.5	18.0	17.5
	Montana	22.6	23.8	20.3	21.4	19.4	21.4	22.1	23.0
Current cigarette use (smoked cigarettes during the past 30 days)	U.S.	34.8	36.4	34.8	28.5	21.9	23.0	20.0	19.5
	Montana	34.8	38.1	35.0	28.5	22.9	20.1	20.0	18.7
Current alcohol use (drank alcohol during the past 30 days)	U.S.	51.6	50.8	50.0	47.1	44.9	43.3	44.7	41.8
	Montana	58.2	59.0	57.6	54.1	49.5	48.6	46.5	42.8
Binge drinking (5 or more drinks within a couple hours during the past 30 days)	U.S.	32.6	33.4	31.5	29.9	28.3	25.5	26.0	24.2
	Montana	43.1	44.4	43.6	41.4	37.3	34.4	32.7	30.1
Current marijuana use (used marijuana during the past 30 days)	U.S.	25.3	26.2	26.7	23.9	22.4	20.2	19.7	20.8
	Montana	20.1	26.9	25.5	27.1	23.1	22.3	21.0	23.1
Ever had sexual intercourse	U.S.	53.1	48.4	49.9	45.6	46.7	46.8	47.8	46.0
	Montana	47.0	45.9	42.5	43.9	43.6	43.6	45.7	47.6
Attempted suicide during the past 12 months	U.S.	8.7	7.7	8.3	8.8	8.5	8.4	6.9	6.3
	Montana	8.5	8.4	6.7	10.4	9.7	10.3	7.9	7.7

Source: U.S. Census Bureau

## National Assessment of Education (NAEP) Progress Historical Performance in Montana Schools

Subject	Grade	Year	State Average	National Average	
Mathematics (scale: 0-500)	4	1996 <sup>n</sup>	228	222	
		2003	236	234	
		2005	241	237	
	8	2007	244	239	
		2009	244	239	
		1990 <sup>n</sup>	280	262	
		1996 <sup>n</sup>	283	271	
		2003	286	276	
		2005	286	278	
Reading (scale: 0-500)	4	1994 <sup>n</sup>	222	212	
		1998	225	213	
		2003	223	216	
	8	2005	225	217	
		2007	227	220	
		2009	225	220	
		1998	271	261	
		2003	270	261	
		2005	269	260	
Science (scale: 0-300)	4	2000	160	145	
		2005	160	149	
		1996 <sup>n</sup>	162	148	
	8	2000	164	148	
		2005	162	147	
		2007	157	154	
	Writing (scale: 0-300)	4	2002	149	153
			1998	150	148
		8	2002	152	152
2007			157	154	

<sup>n</sup> Accommodations were not permitted for this assessment

Source: National Center for Education Statistics



# Libraries

There are 761 libraries in Montana. Senate and House district figures in the table below show the number of libraries located in cities within 10 miles of the district's boundaries. For more detailed information on Montana's libraries visit [http://www.msl.mt.gov/For\\_Librarians/Library\\_Directory/](http://www.msl.mt.gov/For_Librarians/Library_Directory/).

Source: *Montana State Library, November 2010*

	Montana	Senate District 9	House District 17	House District 18
Public	81	7	4	3
Branches	31	3	3	0
Bookmobiles	3	1	0	1
School	562	60	24	36
Academic	28	3	0	3
Special or Other	56	7	0	7
<b>Total</b>	<b>761</b>	<b>81</b>	<b>31</b>	<b>50</b>

## Montana Talking Book Library

### Services for Blind or Disabled Montanans

- In 2009-2010, our 5 employees and 100 volunteers provided FREE specialized library services, via mail or download, by circulating 259,382 books and materials to 4,173 blind or disabled Montana veterans and residents of all ages. Since 2009, we served an additional 1,097 more patrons - a 28% increase.
- Our patrons benefit from a variety of access options: the newest easy-to-use, accessible digital book program; free digital talking book machines delivered to patrons' homes; free eLibrary with 20,000 books to download; 63,000 additional book titles and 80 periodicals for loan in one or more formats; access to radio or phone newspaper services.
- Our Montana Recording Program has produced over 1,000 Montana books for all ages.
- Our Montana Braille /Twin Vision Program has produced over 442 books for Montana children.
- Special funding from the 2009 Legislature successfully provided patrons of MONTANA AUDIO Information Network (formerly Montana Radio Reading Service) and Montana Association for the Blind with improved access and expanded newspaper resources.



### For more information:

<http://msl.mt.gov/tbl/> OR 1-800-332-3400

Senate and House district figures in the table below show the number of patrons located in cities within 10 miles of the district's boundaries.

	Montana	Senate District 9	House District 17	House District 18
Total Patrons	4,173	479	105	390
Veterans Who Are Patrons	409	48	11	40
Patron Count by Disability				
Blindness	1,212	148	27	125
Low Vision	2,129	239	58	190
Physical	350	28	7	21
Reading	482	64	13	54

Source: *Montana Talking Book Library*

## Montana Public Libraries Fast Facts

- Montana's public libraries hold 3,348,859 items.
- Montanans visited their public libraries an average of five times throughout the year, for a total of 4,429,464 visits in 2009.
- Montana library patrons checked out 6,244,116 items in 2009, about seven items per person.
- Librarians in Montana's public libraries fielded 428,844 reference questions in SFY 2009, or 8,247 questions per week.
- 100% of all Montana libraries provide Internet access to patrons
- Nearly half of all Montanans (442,311) have a library card.

## Montana Shared Catalog Statistics

The Montana Shared Catalog helps Montana libraries meet today's library users demands. It gives Montanans a rich and easy-to-use catalog including more than 3.3 million items which patrons circulated 4,178,877 times in SFY 2010. Additional groups that partner to share their catalogs include the 4 Rivers, BridgerNet, and Partners groups. Senate and House district figures below show the number of libraries located in cities within 10 miles of the district's boundaries.



Havre-Hill County library director, Bonnie Williamson, using the Montana Shared Catalog system to check out a book to a patron.

## Montana Shared Catalog Senate District 9 Public and Branch Libraries

Seeley Lake Branch Library, Seeley Lake

	Montana	Senate District 9	House District 17	House District 18
Participating Libraries	132	4	4	2
Patrons	364,554	1,024	1,024	8
Items	3,325,517	31,930	31,930	925
Partner Group Libraries	28	3	3	0

## Statewide Library Training

The Montana State Library's consultants travel throughout Montana and meet one-on-one with librarians and library trustees across the state, assisting with everything from training and technology to applying Montana library law and fundraising basics. In the last fiscal year, MSL's consultants traveled over 60,000 miles, made over 2,000 contacts and completed over 400 visits with Montana's library community.

Total Attendees	1,321
Number of Workshops	113
Number of different Montana locations	63

Time period: January 2009 - December 2010

Source: *Montana State Library*



# Statewide Library Resources

The Montana State Library works on behalf of all Montana libraries to help them provide the latest and best information and library services to their patrons – your constituents. We negotiate on behalf of libraries across the state to get the best rate on cutting-edge library products and services, on which many Montanans depend for everything from making health care decisions to finding a job. Examples include our statewide contract with OCLC, a worldwide consortium of libraries dedicated to providing top-notch library services and a subscription to the genealogy database, HeritageQuest which is available to all public libraries in the state. Without statewide library projects, some of which are listed here, many Montanans would be left behind in this age of information.

## Statewide Databases

Thanks to an allocation from the Montana legislature, the Montana State Library offers statewide databases to all Montana library patrons. Access to this completely online collection – accessible in the library, at home, or on a mobile device – includes hundreds of databases and thousands of full text articles on everything from business resources to health information.

## Ready 2 Read

The Montana State Library's Ready 2 Read program is designed to help parents and caregivers understand the value of sharing language and literacy with their children and the importance these skills play throughout a person's life. So far, 45 libraries have received extensive early childhood training and a large number of materials to serve Montana's youngest library patrons; additionally these 45 libraries now offer programming just for children ages 0 – 3.



<http://ready2readmontana.org/>

## Courier Pilot Project

As access to quality information has become a vital part of our lives, the Montana State Library is working on a number of ways for libraries to share information and materials affordably and dependably. One of these methods is the Montana Courier Project, which uses a commercial courier service to ship library materials and resources around the state. As the pilot participation has grown, participating libraries are seeing increasingly significant savings in the cost of moving library materials around the state.

## Participating Libraries

Senate and House district figures in the table below show the number of libraries located in cities within 10 miles of the district's boundaries.

	Montana	Senate District 9	House District 17	House District 18
Statewide Databases	762	72	30	49
OCLC	250	14	6	10
Courier Project	34	6	4	3
MontanaLibrary2Go	48	4	3	2
HeritageQuest	86	6	4	3
Montana Memory Project	15	0	0	0

Source: *Montana State Library*

## Montana's Cultural Heritage

In partnership with the Montana Historical Society and other partners, the Montana State Library helps to ensure that Montanans have ready access to our Montana cultural heritage. The Montana Memory Project provides online access to digitized copies of historic as well as contemporary material that serve as a resource for education, business, pleasure, and lifelong learning. <http://mtmemory.org/>



*First train from St. Paul, over the last spike enroute to Portland, OR. September 8, 1883*  
*Montana Historical Society Photo Archives*  
*Montana Memory Project*

Additionally, the Montana State Library launched the online companion to the Montana Historical Society's *Montana Place Names: From Alzada to Zortman*. This web mapping application makes discoverable the history of more than 1,200 Montana place names and includes all the photos and descriptions found in the book. <http://mtplacenames.org/>

## State Publications Available Online!

The Montana State Library is digitizing our legacy print state publications collection of 55,000 publications dating to 1874. To date, nearly one million pages have been digitized. All of these publications are available online in a variety of formats at <http://statepublications.mt.gov>. Use of these items is 250 times more frequent than traditional print.

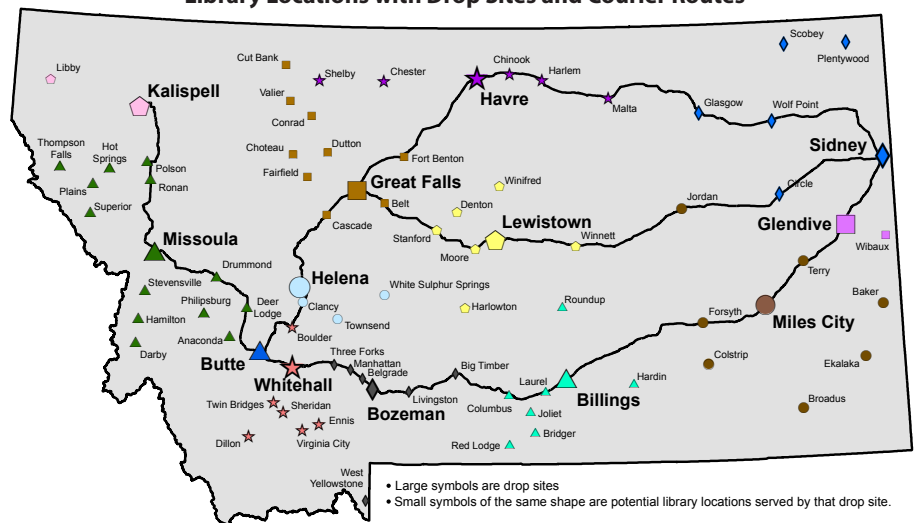
## Montana Library 2 Go

Montana library patrons are reading more books on mobile devices than ever before and Montana libraries are delivering the goods with Montana Library 2 Go, a collection of downloadable audio and E-book titles to patrons of participating libraries. Titles are available for download on MP3 players, iPods, iPads and other playing and reading devices.

## GIS Portal

Funded by the 2007 Legislature and first launched in 2008, the Montana GIS Portal serves as Montana's primary online resource to discover geospatial data. The Portal provides online access to hundreds of datasets in a variety of formats for use in maps, web mapping applications and geospatial analyses. <http://gisportal.msl.mt.gov/>

## Montana Library Courier/Delivery Service Pilot Library Locations with Drop Sites and Courier Routes



• Large symbols are drop sites  
 • Small symbols of the same shape are potential library locations served by that drop site.

Source: *Montana State Library, December 2010*

# Land

## Land Ownership

Senate District 9 ranks number 11 in size and is 5,170.156 square miles, or about 4% of Montana's total land area (146,923.321 square miles). The average senate district in Montana is 2,938 square miles and the average house district is 1,469 square miles.

Owner	Montana		Senate District 9		House District 17		House District 18	
	Area (Sq Mi)	%	Area (Sq Mi)	%	Area (Sq Mi)	%	Area (Sq Mi)	%
Private	95,738	65	2,574	50	2,327	48	247	89
Local Government	32	< 1	< 1	< 1	< 1	< 1	0	0
Montana Fish, Wildlife and Parks	470	< 1	61	1	59	1	2	< 1
State Trust Land	8,020	5	314	6	287	6	26	10
Other State Land	89	< 1	6	< 1	5	< 1	< 1	< 1
US Bureau of Land Management	12,451	8	55	1	55	1	< 1	< 1
US Fish and Wildlife Service	1,373	< 1	2	< 1	2	< 1	0	0
US Forest Service	26,317	18	2,091	40	2,091	43	0	0
US National Park Service	1,829	1	0	0	0	0	0	0
Other Federal Land	318	< 1	32	< 1	32	< 1	< 1	< 1
<b>Total</b>	<b>146,923</b>		<b>5,170</b>		<b>4,893</b>		<b>277</b>	

Source: Montana Natural Heritage Program, July 2010

## Private Land Agricultural Use

Owner	Montana		Senate District 9		House District 17		House District 18	
	Acres	%	Acres	%	Acres	%	Acres	%
Continuous Crop	25,468	< 1	266	< 1	0	0	266	< 1
Fallow Crop	13,281,791	16	517,931	17	459,102	16	58,829	29
Farmstead	0	0	0	0	0	0	0	0
Grazing	49,048,154	59	1,390,570	45	1,284,890	45	105,680	52
Irrigated	5,220,163	6	271,445	9	235,405	8	36,040	18
Timber	14,168,777	17	850,478	28	850,478	30	0	0
Wild Hay	1,097,282	1	26,996	< 1	25,998	< 1	998	< 1
<b>Total</b>	<b>82,841,635</b>		<b>3,057,686</b>		<b>2,855,873</b>		<b>201,812</b>	

Source: Montana Department of Administration Information Technology Services Division - Geographic Information Services, October 2010

## Conservation Easements (Acres)

	Montana	Senate District 9	House District 17	House District 18
	Bitter Root Land Trust	2,422	0	0
City Government	601	0	0	0
Clark Fork- Pend Oreille Conservancy	151	0	0	0
County Government	528	0	0	0
Ducks Unlimited (Wetlands America Trust)	16,979	0	0	0
Five Valleys Land Trust	37,763	2,524	2,524	0
Flathead Land Trust	8,054	0	0	0
Gallatin Valley Land Trust	36,149	0	0	0
Montana Department of Transportation	938	47	47	0
Montana Fish, Wildlife, and Parks	384,984	3,975	3,975	0
Montana Land Reliance	831,566	24,904	21,646	3,257
National Wildlife Federation	20	0	0	0
Prickly Pear Land Trust	3,246	0	0	0
Rattlesnake Land Trust	190	0	0	0
Rocky Mountain Elk Foundation	49,220	2,314	2,314	0
Salish and Kootenai Tribe	102	0	0	0
The Bighorn Institute	1,443	0	0	0
The Nature Conservancy	309,443	56,520	56,520	0
The Vital Ground Foundation	833	0	0	0
US Bureau of Reclamation	42	0	0	0
US Department of Agriculture	17,652	6,236	6,236	0
US Fish and Wildlife Service	232,456	47,304	47,304	0
US Forest Service	20,038	2,901	2,901	0
<b>Total</b>	<b>1,955,555</b>	<b>146,724</b>	<b>143,466</b>	<b>3,257</b>

Source: Montana Natural Heritage Program

## Montana Spatial Data Infrastructure

The Montana Spatial Data Infrastructure (MSDI) is a digital representation of Montana's physical and cultural landscape that allows the state to be mapped. Some of the individual components of the MSDI are roads, lakes and streams, land ownership, administrative boundaries, soils, land use, structures, aerial photographs, watersheds, wetlands, elevation, and geology.

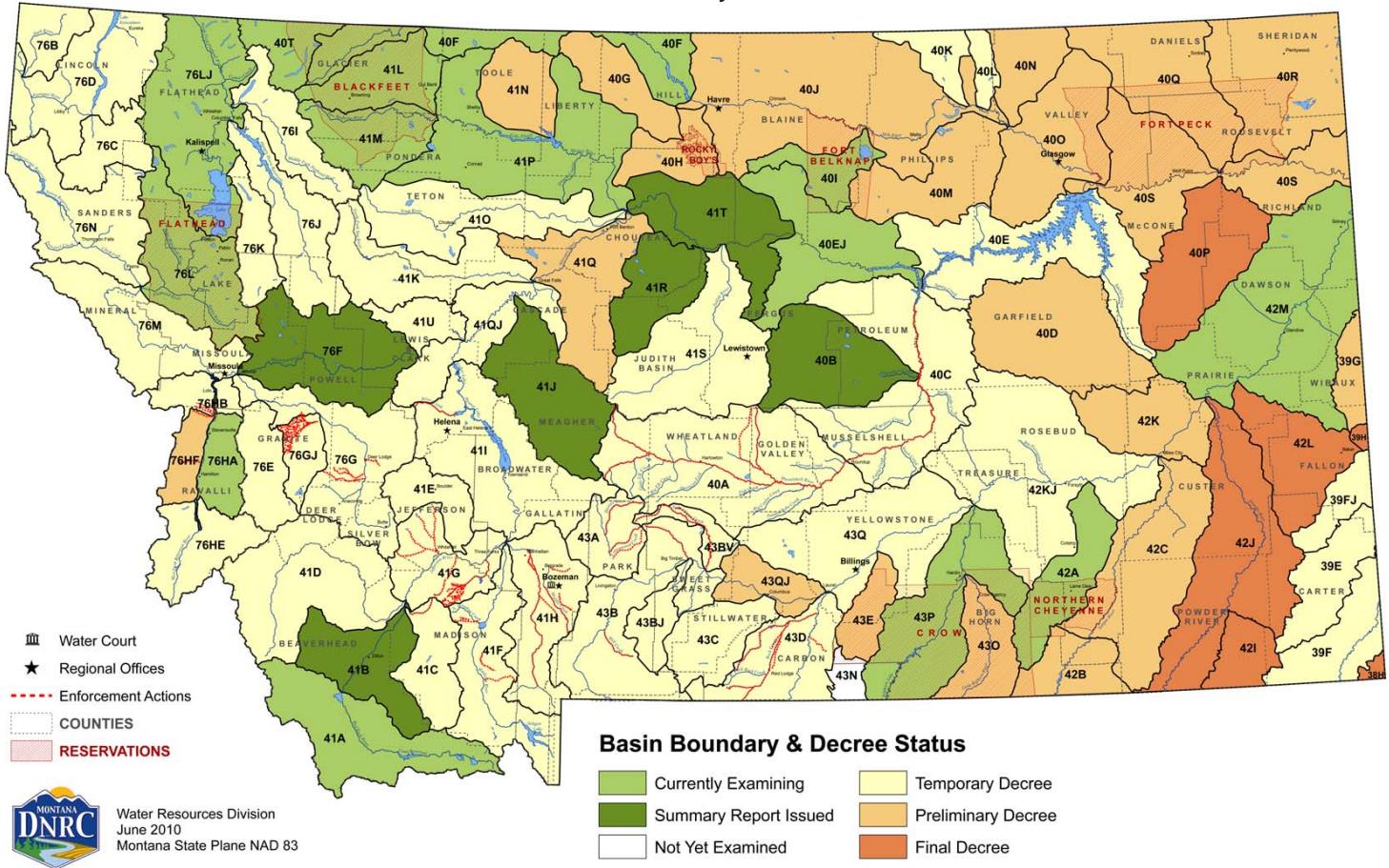
This information is fast becoming a critical element for policy review at the state and local levels in both the public and private sectors. For more information see: <http://giscoordination.mt.gov/>.





The Department of Natural Resources and Conservation maintains a database of water rights to assist Montana citizens and the Montana Water Court in the water rights adjudication process. Visit their site at [http://dnrc.mt.gov/wrd/water\\_rights/](http://dnrc.mt.gov/wrd/water_rights/).

## Basin Location and Adjudication Status



## Dams in Senate District 9

There are 3,666 dams in the national inventory of dams for Montana. Predominant uses are stock/farm ponds (48%) and irrigation (22%). Additional dams not included in the inventory can be found by searching for water rights.

Source: *National Inventory of Dams, USGS Geographic Names Information System, September 2003*

Type	Montana	Senate District 9	House District 17	House District 18
Debris Control	1	0	0	0
Fish and Wildlife Pond	1	0	0	0
Flood Control	43	0	0	0
Hydroelectric	26	0	0	0
Irrigation	822	39	39	0
Recreation	54	3	3	0
Stock/Small Farm Pond	1,771	35	27	8
Tailings	8	0	0	0
Water Supply	44	0	0	0
Other	68	1	1	0
Unknown	828	4	4	0
<b>Total</b>	<b>3,666</b>	<b>82</b>	<b>74</b>	<b>8</b>

## Public Water Supplies

There are 3,266 public water supplies located in the State of Montana, 83 of which are located in Senate District 9. These figures do not include public water supplies serving Native American nations.

	Count
<b>House District 17</b>	
Public, community	21
Public, non-community, non-transient	8
Public, transient	28
<b>House District 18</b>	
Public, community	12
Public, non-community, non-transient	3
Public, transient	11

Source: *Department of Environmental Quality, December 2007*

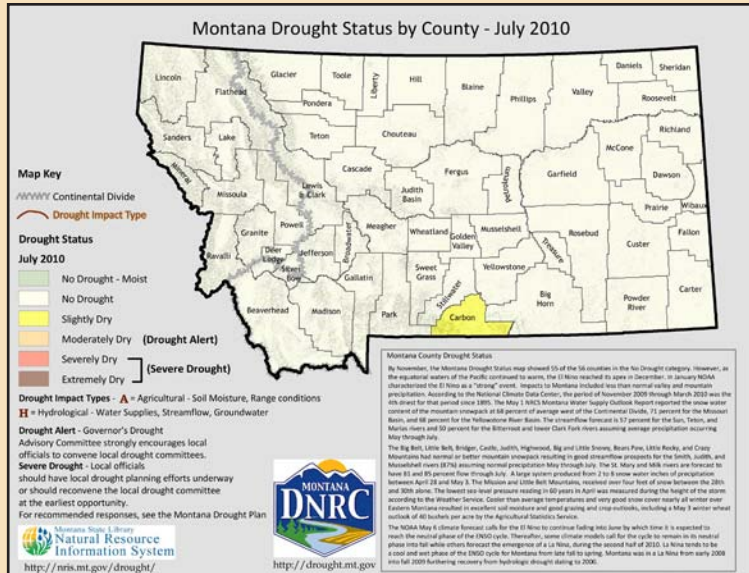




## Montana Drought Resources

The Montana Governor's Drought Advisory Committee is charged with monitoring, forecasting, and reporting water supply and moisture conditions, enabling Montanans to make timely and informed decisions to mitigate drought impacts in a proactive manner.

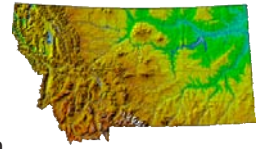
For up-to-date information and maps on Montana's current drought situation visit <http://drought.mt.gov/>.



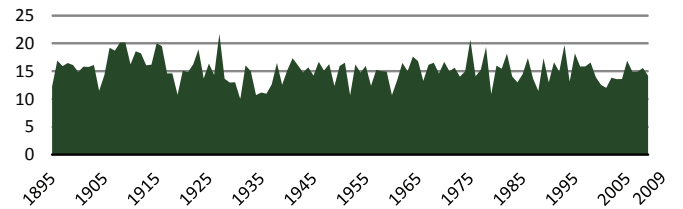
Source: Natural Resource Information System

## Montana Digital Atlas

Additional mapping and data capabilities are available through the Montana State Library at <http://nris.mt.gov/>. The Montana Digital Atlas provides unlimited access to detailed information on such issues as climate, environmental impacts, land information, water, and cultural data.



## Montana Annual Precipitation in Inches (1895 - 2009)



Source: NOAA Satellite and Information Service

## Montana Fires 2002 - 2008

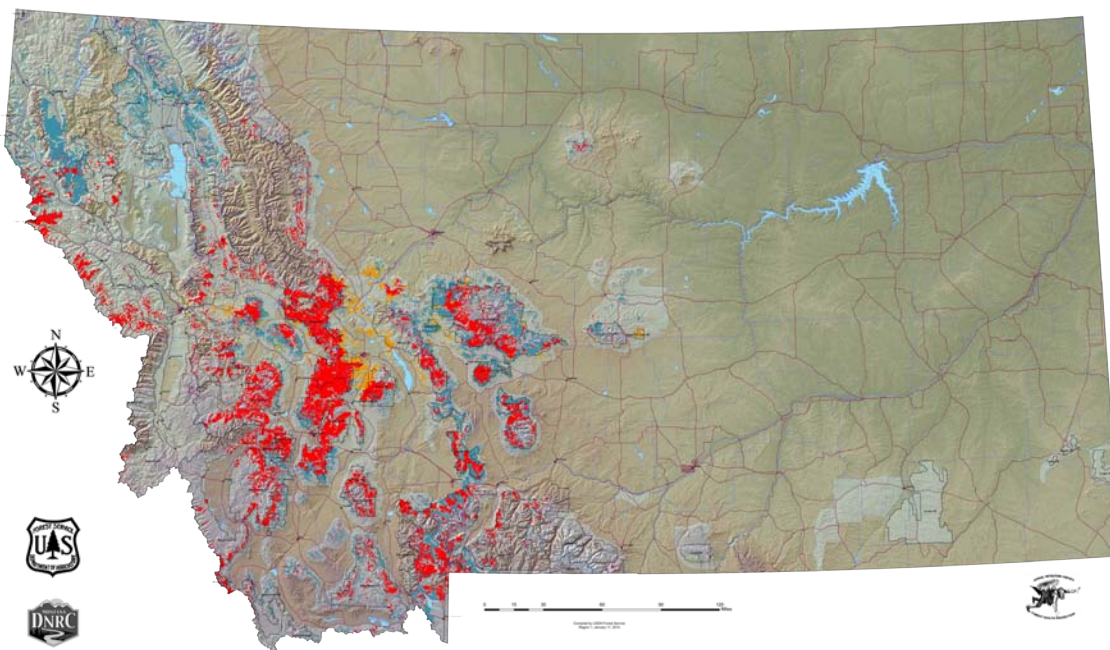
### All Fires As Reported by All Agencies

Year	Count	Acreage
2002	1,372	110,309
2003	2,326	736,809
2004	1,447	18,445
2005	1,316	103,294
2006	2,302	1,047,118
2007	1,875	778,079
2008	1,424	166,842

Source: Department of Natural Resources and Conservation

## 2009 Aerial Detection Survey Data - Insect and Disease Outbreaks in Montana

As Detected by Forest Health Protection's (FHP) Aerial Insect and Disease Detection Survey - USDA Forest Service.



### \*\*Disclaimer\*\*

The sources of the digital map layer used to compile the base map upon which the insect and disease data are presented vary in both source and scale, therefore, accuracy is not guaranteed.

The insect and disease data should be used only as an indicator of insect and disease activity, and should be ground-truthed for actual location and causal agent. Polygons indicate locations of tree mortality, defoliation, and/or other damage. Intensity of damage is variable, and not all trees and areas indicated are dead or damaged. The joint cooperators reserve the right to correct, modify, update, or replace the data as necessary. Using this data for purposes other than those for which it was intended may yield inaccurate or misleading results.

## Oil and Gas Wells in Senate District 9

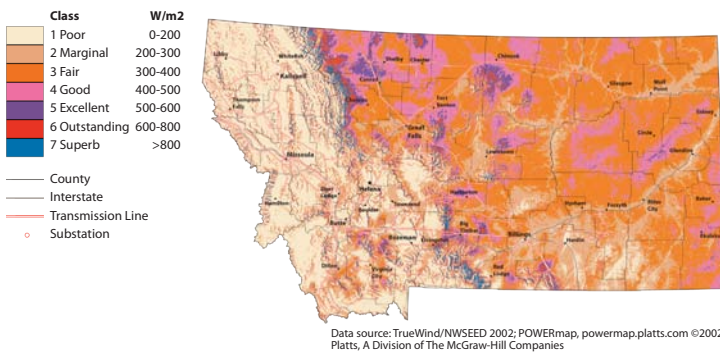
	Montana	Senate District 9	House District 17	House District 18
Coal Bed Methane, Active	1,117	0	0	0
Coal Bed Methane, Inactive	40	0	0	0
Gas, Active	7,351	20	20	0
Gas, Inactive	2,509	21	21	0
Gas Storage, Active	272	0	0	0
Gas Storage, Inactive	14	0	0	0
Injection, Active	1,109	9	9	0
Injection, Inactive	749	3	3	0
Oil, Active	7,230	184	184	0
Oil, Inactive	4,511	107	107	0
<b>Total</b>	<b>24,902</b>	<b>344</b>	<b>344</b>	<b>0</b>

Source: Montana Board of Oil and Gas Conservation, October 2008

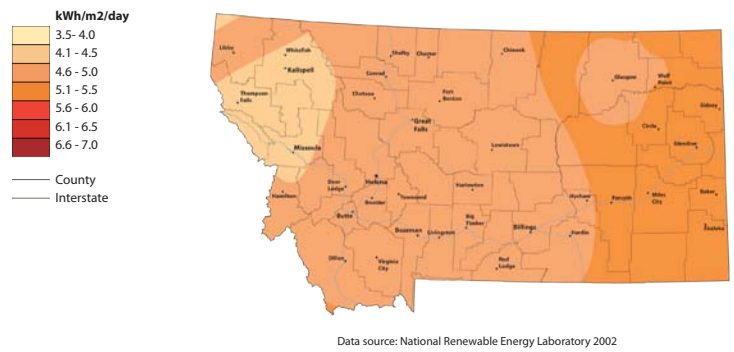
Additional information about oil and gas wells is available through the Board of Oil and Gas Conservation's WebMapper which can be accessed at <http://bogc.dnrc.mt.gov/>.

## Energy Atlas

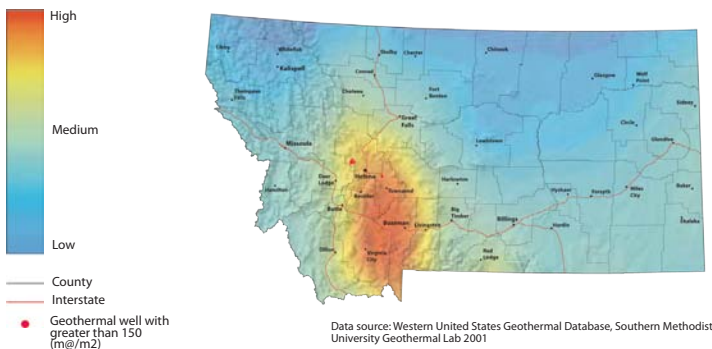
### Wind Power at 50 Meters - Wind Power Density



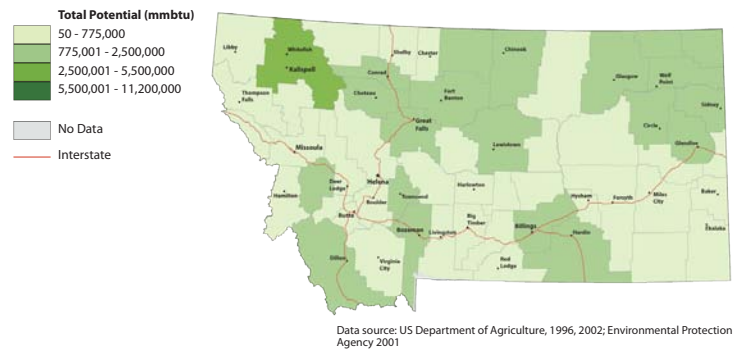
### Solar Insolation Annual Average



### Geothermal Potential



### Total Energy Potential from Biomass Residue



Find additional energy related data and maps at <http://www.energyatlas.org/>

## Pipelines in Senate District 9

	Montana		Senate District 9		House District 17		House District 18	
	Count	Miles	Count	Miles	Count	Miles	Count	Miles
Crude Oil	90	1,970	2	40	2	40	0	0
Natural Gas	360	3,301	8	91	6	68	2	23
Refined Product	47	805	0	0	0	0	0	0
Other	24	402	2	37	2	37	0	0
<b>Total</b>	<b>521</b>	<b>6,477</b>	<b>12</b>	<b>169</b>	<b>10</b>	<b>146</b>	<b>2</b>	<b>23</b>

Source: Pipeline Integrity Management Mapping Application, December 2006

## Abandoned Mines and Remediation Sites

	Abandoned Mines	Remediation Sites
Montana	6,954	765
Senate District 9	18	15
House District 17	16	10
House District 18	2	5

Source: Montana Department of Environmental Quality, November 2010

## Montana House Heating Fuel

	Occupied housing units	
Utility gas	373,455	100%
Bottled, tank, or LP gas	215,172	57.6%
Electricity	49,291	13.2%
Fuel oil, kerosene, etc.	66,504	17.8%
Fuel oil, kerosene, etc.	7,126	1.9%
Coal or coke	841	0.2%
Wood	29,473	7.9%
Solar energy	235	0.1%
Other fuel	4,064	1.1%
No fuel used	749	0.2%

Source: 2006-2008 American Community Survey 3-Year Estimates



# Wildlife and Recreation

## Species Diversity in Senate District 9

	Montana (Count)	Senate District 9 (Count)	% of Montana Species
Amphibians	13	10	77
Birds	328	294	90
Fish	81	48	59
Mammals	107	86	80
Reptiles	17	13	76

Source: Montana Natural Heritage Program

## Recreation Area (Acres)

	Senate District 9
Fishing Access Sites	3,562
Fishing Conservation Areas	0
State Parks	1,481
Wildlife Conservation Easements	0
Wildlife Protection Areas	0
Wildlife Management Areas	55,944
<b>Total</b>	<b>60,987</b>

Source: Montana Fish, Wildlife, and Parks

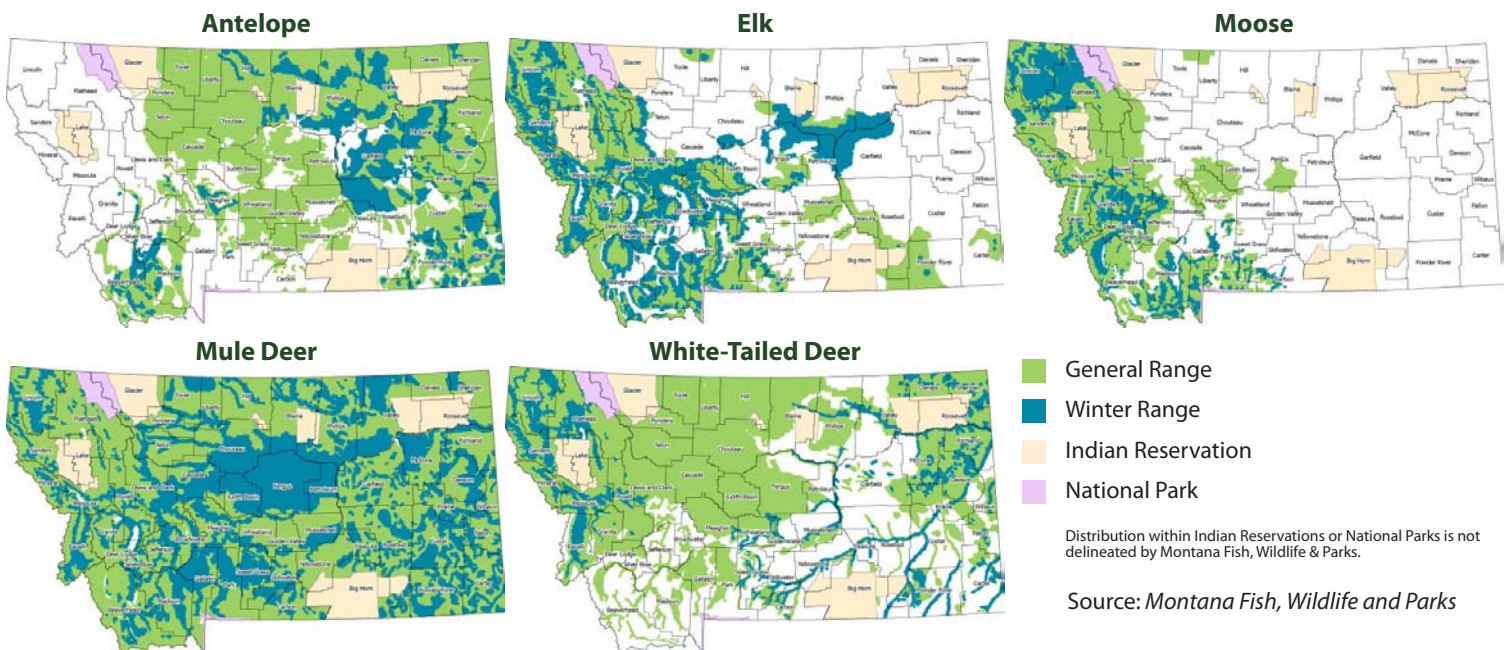
## Block Management Acreage

There are a total of 7,522,358 acres of Block Management land (excluding Plum Creek\*) in the State of Montana. 137,067.00 of those acres or 2% are located in Senate District 9.

\*Plum Creek land in FWP's Regions 1 and 2 are not included in these statistics. Although they are part of the Block Management Program, they are not traditional BMA's and are managed differently.

Source: Montana Fish, Wildlife and Parks

## Big Game Distribution



Montana is blessed with a wealth of wildlife and habitat diversity. These resources provide exceptional opportunities for recreation and contribute substantially to the state's economy and quality of life.

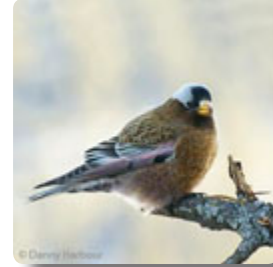
## Wildlife Highlights

For more information on animals, plants, and habitats in your Senate District, visit the Montana Natural Heritage Program at <http://mtnhp.org>. Resources include:

- Montana Field Guide - an encyclopedia of the distribution, status, and biology of Montana's animals, plants, and biological communities
- Natural Heritage Tracker and Map Viewer – interactive maps of animals, plants, land cover, and land stewardship
- Land Stewardship Maps – public lands, conservation easements, and special designations
- Wetland and riparian mapping information
- Reports on Montana's Species of Concern
- Quick responses to data requests and answers from expert scientists on Montana's plants, animals, and biological communities.

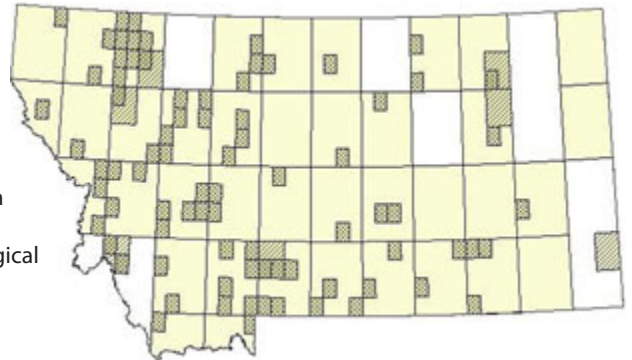
### Gray-crowned Rosy-Finch

*Leucosticte tephrocotis*



The Gray-crowned Rosy-Finch nests in cliff crevices and talus slopes among glaciers and snowfields above timberline in western Montana. During winter individuals migrate to lower elevations across Montana.

### Leucosticte tephrocotis General Observations Range



Source: Montana Natural Heritage Program



# Senate District 9 Libraries and Digital Library Resources

## Public



### Belt Public Library

Gladys Rayhill, Library Director  
Cascade County  
PO Box 467 Belt, MT 59412  
(406) 277-3136  
Web Site: <http://www.beltlibrary.org>  
*OCLC, MyMontanaLibrary2Go, HeritageQuest, Courier Project, Statewide Databases*



### Choteau/Teton Public Library

Marsha Hinch, Library Director  
Teton County  
PO Box 876 Choteau, MT 59422  
(406) 466-2052  
Web Site: <http://www.tetonlibrarynetwork.net>  
Catalog: <http://www.tetonlibrarynetwork.net>  
*OCLC, MyMontanaLibrary2Go, HeritageQuest, Courier Project, Statewide Databases*



### Dutton/Teton Public Library

Jean Harman, Library Director  
Teton County  
22 Main St W Dutton, MT 59433  
(406) 476-3382  
Web Site: <http://tetonlibrarynetwork.net>  
*OCLC, MyMontanaLibrary2Go, HeritageQuest, Courier Project, Statewide Databases*



### Fairfield/Teton Public Library

Brett Allen, Library Director  
Teton County  
PO Box 324 Fairfield, MT 59436  
(406) 467-2477  
*OCLC, MyMontanaLibrary2Go, HeritageQuest, Courier Project, Statewide Databases*



### Great Falls Public Library

Kathy Mora, Library Director  
Cascade County  
301 2nd Ave North Great Falls, MT 59401  
(406) 453-0349  
Web Site: <http://www.greatfallslibrary.org>  
Catalog: <http://catalog.greatfallslibrary.org/uhtbin/cgiirsi/x/0/0/57/49>  
*OCLC, MyMontanaLibrary2Go, HeritageQuest, Courier Project, Statewide Databases*



### Lewis and Clark Library

Judy Hart, Library Director  
Lewis and Clark County  
120 South Last Chance Gulch Helena, MT 59601  
(406) 447-1690  
Web Site: <http://www.lewisandclarklibrary.org>  
Catalog: <http://catalog.lewisandclarklibrary.org/#058;8000/>  
*OCLC, MyMontanaLibrary2Go, HeritageQuest, Courier Project, Statewide Databases*



### Lewis and Clark Library Augusta Branch

Susan Geise, Branch Librarian  
Lewis and Clark County  
PO Box 387 Augusta, MT 59410  
(406) 562-3348  
Web Site: <http://www.lewisandclarklibrary.org>  
*OCLC, Statewide Databases*



### Lewis and Clark Library East Helena Branch

Diane Potter, Branch Librarian  
Lewis and Clark County  
PO Box 1398 East Helena, MT 59635  
(406) 227-5750  
Web Site: <http://www.lewisandclarklibrary.org>  
Catalog: <http://www.lewisandclarklibrary.org>  
*OCLC, Statewide Databases*



### Lewis and Clark Library Lincoln Branch

Sherri Wood, Branch Librarian  
Lewis and Clark County  
PO Box 309 Lincoln, MT 59639  
(406) 362-4300  
Web Site: <http://www.lewisandclarklibrary.org>  
*OCLC, Statewide Databases*



### Wedsworth Memorial Library

Jacqueline Strandell, Library Director  
Cascade County  
PO Box 526 Cascade, MT 59421  
(406) 468-2848  
Web Site: <http://www.cascademontana.com/wedsworth>  
Catalog: <http://www.wedsworth@3riversdbs.net>

*OCLC, HeritageQuest, Courier Project, Statewide Databases*



### William K. Kohrs Memorial Library

Kate Potter, Library Director  
Powell County  
501 Missouri Ave Deer Lodge, MT 59722  
(406) 846-2622

Web Site: <http://kohrslibrary.org>  
*OCLC, MyMontanaLibrary2Go, HeritageQuest, Statewide Databases*

### Academic

#### Jack and Sallie Corette Library

Christian Frazza, Library Director  
Lewis and Clark County  
1601 N Benton Ave Helena, MT 59625  
(406) 447-4340  
Web Site: <http://www.carroll.edu/library>  
Catalog: <http://isbn.lib.montana.edu/uhtbin/cgisirsi/x/0/0/57/49>  
*OMNI System, OCLC, Statewide Databases*

#### Mountain States Baptist College Library

Richard Jonas, Library Director  
Cascade County  
216 9th Street North Great Falls, MT 59401  
(406) 761-0308  
*OCLC, Statewide Databases*

#### MSU-Great Falls College of Technology Weaver Library

Laura Wight, Library Director  
Cascade County  
2100 16th Ave South Great Falls, MT 59405  
(406) 771-4398  
Web Site: <http://library.msugf.edu>  
Catalog: <http://isbn.lib.montana.edu/uhtbin/cgisirsi/acCtJDKgoh/157250078/60/502/X>  
*OMNI System, OCLC, Statewide Databases*

### UM - Helena College of Technology Library

Janice Bacino, Library Director  
Lewis and Clark County  
Helena, MT 59601  
(406) 444-2743  
Web Site: <http://umhelena.edu/library>  
Catalog: <http://umhelena.lib.umt.edu>  
*University of Montana Consortium, OCLC, MyMontanaLibrary2Go, Statewide Databases*

### Bookmobile

#### Great Falls Public Library Bookmobile

Gwen Carter, Circulation Supervisor  
Cascade County  
301 2nd Ave North Great Falls, MT 59401  
(406) 453-0349  
Web Site: <http://www.greatfallslibrary.org/bookmobile.html>  
Catalog: <http://www.greatfallslibrary.org/catalog.html>  
*OCLC, Statewide Databases*

### Institutional

#### Cottonwood Union Library

Desiree Dramstad, Library Director  
Powell County  
600 Conley Lake Road Deer Lodge, MT 59722  
(406) 846-1320  
*OCLC, Statewide Databases*

### School

#### Auchard Creek Elementary

Elaine Dirkes, Supervising Teacher/Librarian  
Lewis and Clark County  
9605 Hwy 287 Wolf Creek, MT 59648  
(406) 562-3533  
*OCLC, Statewide Databases*

#### Augusta Public Schools

Christy Hendricks, Library Director  
Lewis and Clark County  
PO Box 307 Augusta, MT 59410  
(406) 562-3384  
*OCLC, Statewide Databases*

#### Avon Elementary School

Tressa Graveley, Supervising Teacher/Librarian  
Powell County  
PO Box 246 Avon, MT 59713  
(406) 492-6191  
*OCLC, Statewide Databases*

#### Belt Public Schools

Debra Ray, School Librarian  
Cascade County  
PO Box 197 Belt, MT 59412  
(406) 277-3351  
Web Site: <http://www.beltschool.com>  
*OCLC, Statewide Databases*

#### BisonLibrary

BJ McCracken, Library Director  
Cascade County  
1900 2nd Ave S Great Falls, MT 59405  
(406) 268-6304  
Web Site: <http://www.bisonlibrary.org>  
*OCLC, Statewide Databases*

### Broadwater Elementary School

Marla Unruh, Librarian  
Lewis and Clark County  
900 Hollins Helena, MT 59601  
(406) 324-1152  
Web Site: <http://www.helena.k12.mt.us>  
Catalog: <http://library.helena.k12.mt.us/webopac/main>  
*OCLC, Statewide Databases*

### Bryant Elementary School

Charlotte Henson, School Librarian  
Lewis and Clark County  
1529 Boulder Ave Helena, MT 59601  
(406) 324-1181  
Web Site: <http://www.helena.k12.mt.us/>  
Catalog: <http://destiny.hsd1.org>  
*OCLC, Statewide Databases*

### Bynum Elementary School

Susan Luinstra, Supervising Teacher/Librarian  
Teton County  
PO Box 766 Bynum, MT 59419  
(406) 469-2371  
*OCLC, Statewide Databases*

### C.M. Russell High School Media Center

Amy Borger, Library Director  
Cascade County  
228 17th Ave NW Great Falls, MT 59404  
(406) 268-6124  
Web Site: <http://cmrweb.gfps.k12.mt.us/MediaCenter/MediaCenterPage.htm>  
*OCLC, Statewide Databases*

### C.R. Anderson Middle School Library

Margy Kernan, School Librarian  
Lewis and Clark County  
1200 Knight St Helena, MT 59601  
(406) 324-2813  
Web Site: <http://destiny.hsd1.org/common/welcome.jsp?site=102>  
Catalog: <http://destiny.hsd1.org/common/welcome.jsp>  
*OCLC, Statewide Databases*

### Capital High School Library

Jeanne Tweeten, School Librarian  
Lewis and Clark County  
100 Valley Drive Helena, MT 59601  
(406) 324-2503  
Web Site: <http://destiny.hsd1.org/common/servlet/logout.do?site=103>  
Catalog: <http://destiny.hsd1.org/common/servlet/presenthomeform.do>  
*OCLC, Statewide Databases*

### Cascade Public Schools

Mary Romenesko, School Librarian  
Cascade County  
PO Box 529 Cascade, MT 59421  
(406) 468-2267  
Web Site: <http://www.cascade.k12.mt.us/>  
*OCLC, Statewide Databases*

### Centerville School Library

Sue Lorang, School Librarian  
Cascade County  
693 Stockett Rd Sand Coulee, MT 59472  
(406) 736-5123  
*OCLC, Statewide Databases*

### Central Catholic School Library

Kinzler Luella, School Librarian  
Cascade County  
1301 20th Street South-McLaughlin Center-UGF Great Falls, MT 59401  
(406) 791-5940  
Web Site: <http://greatfallscatholic.org>  
*OCLC, Statewide Databases*

**Central Elementary School**

Linda Lynch, Librarian  
Lewis and Clark County  
402 N Warren Helena, MT 59601  
(406) 324-1248  
Web Site: <http://www.helena.k12.mt.us/>  
Catalog: <http://library.helena.k12.mt.us/webopac/main>  
*OCLC, Statewide Databases*

**Chief Joseph School**

Michelle Nadeau, School Librarian  
Cascade County  
5305 3rd Ave S Great Falls, MT 59405  
(406) 268-6675  
Web Site: <http://gfps.k12.mt.us/>  
*OCLC, Statewide Databases*

**Choteau Public Schools**

Sandra Robbins, School Librarian  
Teton County  
204 7th Ave NW Choteau, MT 59422  
(406) 466-5303  
*OCLC, Statewide Databases*

**Craig Elementary**

Heidi Herbolich, Supervising Teacher/Librarian  
Lewis and Clark County  
PO Box 200 Craig, MT 59648  
(406) 235-4239  
*OCLC, Statewide Databases*

**Deep Creek Elementary**

Emma Zurich, Supervising Teacher/Librarian  
Cascade County  
1508 Millegan Rd Great Falls, MT 59405  
(406) 866-3381  
*OCLC, Statewide Databases*

**Deer Lodge Schools**

Jacquelin Thompson, School Librarian  
Powell County  
444 Montana Avenue Deer Lodge, MT 59722  
(406) 846-2268  
*OCLC, Statewide Databases*

**Dutton-Brady Public Schools**

Danny Sims, School Librarian  
Teton County  
101 2nd St NE Dutton, MT 59433  
(406) 476-3424  
*OCLC, Statewide Databases*

**East Middle School**

Luella Kinzler, Library Specialist  
Cascade County  
4040 Central Ave Great Falls, MT 59405  
(406) 268-6461  
Web Site: <http://www.gfps.k12.mt.us/>  
*OCLC, Statewide Databases*

**East Valley Middle School**

Judy Salisbury, School Librarian  
Lewis and Clark County  
PO Box 1280 East Helena, MT 59635  
(406) 227-7740  
Web Site: <http://www.ehps.k12.mt.us/153210818163944260/site/default.asp>  
*OCLC, Statewide Databases*

**Eastgate Elementary School**

Rose Powell, School Librarian  
Lewis and Clark County  
PO Box 1280 East Helena, MT 59635  
(406) 227-7770  
Web Site: <http://www.ehps.k12.mt.us/153210818154616187/site/default.asp>  
*OCLC, Statewide Databases*

**Elliston Elementary**

Brooks Phillips, Supervising Teacher/Librarian  
Powell County  
PO Box 160 Elliston, MT 59728  
(406) 492-7676  
*OCLC, Statewide Databases*

**Fairfield Public Schools**

Dianne Van Auken, School Librarian  
Teton County  
PO Box 399 Fairfield, MT 59436  
(406) 467-2528  
Web Site: <http://www.fairfield.k12.mt.us/>  
*OCLC, Statewide Databases*

**Four Georgians Elementary School**

Helga Stimson, School Librarian  
Lewis and Clark County  
555 Custer Ave Helena, MT 59601  
(406) 324-1324  
Web Site: <http://destiny.hsd1.org/common/welcome.jsp?sessionId=4948BA841297F36F5E4B0C9381D83ECC?site=105>  
Catalog: <http://destiny.hsd1.org/common/welcome.jsp?sessionId=4948BA841297F36F5E4B0C9381D83ECC>  
*OCLC, Statewide Databases*

**Garrison Elementary**

Shirley Peters, Supervising Teacher/Librarian  
Powell County  
33 School House Road Garrison, MT 59731  
(406) 846-1043  
*OCLC, Statewide Databases*

**Gold Creek Elementary**

Jessica Anderson, Supervising Teacher/Librarian  
Powell County  
PO Box 330011 Gold Creek, MT 59733  
(406) 288-2201  
*OCLC, Statewide Databases*

**Golden Ridge Elementary**

Elizabeth Jordan, School Librarian  
Teton County  
1130 3rd Rd SW Fairfield, MT 59436  
(406) 467-3334  
*OCLC, Statewide Databases*

**Great Falls Central Catholic**

**High School Media Center**  
Noel Osterman, Library Media Specialist  
Cascade County  
Great Falls, MT 59405  
(406) 216-3344  
Web Site: <http://www.greatfallscatholic.org>  
*OCLC, Statewide Databases*

**Great Falls Public Schools**

**Information Services**  
Janet Enloe, User Service and Support Program Manager  
Cascade County  
PO Box 2428 Great Falls, MT 59405  
(406) 268-6032  
Web Site: <http://www.gfps.k12.mt.us/>  
*OCLC, Statewide Databases*

**Greenfield Elementary School**

Lisa Bedord, School Librarian  
Teton County  
590 2nd Road NE Fairfield, MT 59436  
(406) 467-2433  
*OCLC, Statewide Databases*

**Hawthorne Elementary School**

Andree Anderberg, School Librarian  
Lewis and Clark County  
430 Madison Avenue Helena, MT 59601  
(406) 324-1374  
Web Site: <http://www.helena.k12.mt.us/>  
Catalog: <http://destiny.hsd1.org>  
*OCLC, Statewide Databases*

**Helena High School Library**

Niki Whearty, School Librarian  
Lewis and Clark County  
1300 Billings Avenue Helena, MT 59601  
(406) 324-2230  
Web Site: <http://www.destiny.hsd1.org/common/welcome.jsp?sessionId=460BC4787BA29EEAFA73E337C1A3A327?site=107>  
Catalog: <http://www.destiny.hsd1.org/common/welcome.jsp?sessionId=F29332CCF9FAD846BB63BD460E21A5E2>  
*OCLC, Statewide Databases*

**Helena Middle School**

Barbara Lockman, School Librarian  
Lewis and Clark County  
1025 N Rodney Street Helena, MT 59601  
(406) 324-1035  
Web Site: <http://www.helena.k12.mt.us/>  
*OCLC, Statewide Databases*

**Helena School District #1 - IMC**

Suzi Watne, Media Services Coordinator  
Lewis and Clark County  
815 Front Street Helena, MT 59601  
(406) 324-2104  
Web Site: <http://www.helena.k12.mt.us/district/departme/library/index.dhtm>  
Catalog: <http://www.destiny.hsd1.org/common/welcome.jsp>  
*OCLC, Statewide Databases*

**Helmville Elementary**

Susan Graveley, Supervising Teacher/Librarian  
Powell County  
PO Box 91 Helmville, MT 59843  
(406) 793-5671  
*OCLC, Statewide Databases*

**Jefferson Elementary School**

Andree Anderberg, Information Services Librarian  
Lewis and Clark County  
1023 Broadway Helena, MT 59601  
(406) 324-2070  
Web Site: <http://www.helena.k12.mt.us/schools/elementa/jefferso/index.dhtm>  
Catalog: <http://destiny.hsd1.org>  
*OCLC, Statewide Databases*

**Jim Darcy School**

Jeanne Morigeau, School Librarian  
Lewis and Clark County  
990 Lincoln Rd W Helena, MT 59602  
(406) 324-1420  
Web Site: <http://www.helena.k12.mt.us/schools/elementa/jimdarcy/index.dhtm>  
Catalog: <http://www.destiny.hsd1.org/common/welcome.jsp?sessionId=700937BEEED98E83E78D7FBC07A92004>  
*OCLC, Statewide Databases*

**Kessler Elementary School**

Krista Boutillier, School Librarian  
Lewis and Clark County  
2420 Choteau Helena, MT 59601  
(406) 324-1680  
Web Site: <http://www.destiny.hsd1.org/common/welcome.jsp?site=112>  
Catalog: <http://www.destiny.hsd1.org/common/welcome.jsp>  
*OCLC, Statewide Databases*



**Lewis and Clark Elementary School**

Michelle Nadeau, School Librarian  
 Cascade County  
 3800 1st Ave S Great Falls, MT 59405  
 (406) 268-6705  
 Web Site: [http://www.gfps.k12.mt.us/OCLC, Statewide Databases](http://www.gfps.k12.mt.us/OCLC_Statewide_Databases)

**Lincoln Elementary School**

Fran Combs, School Librarian  
 Cascade County  
 624 27th Street S Great Falls, MT 59405  
 (406) 268-6817  
 Web Site: [http://www.gfps.k12.mt.us/OCLC, Statewide Databases](http://www.gfps.k12.mt.us/OCLC_Statewide_Databases)

**Lincoln Public Schools**

Carol Collinson, School Librarian  
 Lewis and Clark County  
 PO Box 39 Lincoln, MT 59639  
 (406) 362-4201  
 OCLC, Statewide Databases

**Longfellow School**

Bob Thorton, School Librarian  
 Cascade County  
 1100 Sixth Ave S Great Falls, MT 59405  
 (406) 268-6847  
 Web Site: [http://www.gfps.k12.mt.us/OCLC, Statewide Databases](http://www.gfps.k12.mt.us/OCLC_Statewide_Databases)

**Loy Elementary School**

AnnMarie Fraser, School Librarian  
 Cascade County  
 501 57th St N Great Falls, MT 59405  
 (406) 268-6885  
 Web Site: [http://www.gfps.k12.mt.us/OCLC, Statewide Databases](http://www.gfps.k12.mt.us/OCLC_Statewide_Databases)

**Meadowlark Elementary School**

Vicki Allen, School Librarian  
 Cascade County  
 2204 Fox Farm Road Great Falls, MT 59404  
 (406) 268-7300  
 Web Site: [http://www.gfps.k12.mt.us/OCLC, Statewide Databases](http://www.gfps.k12.mt.us/OCLC_Statewide_Databases)

**Montana School for the Deaf and the Blind Library**

Staci Bechard, Library Director  
 Cascade County  
 3911 Central Avenue Great Falls, MT 59401  
 (406) 771-6051  
 Web Site: <http://www.msdb.mt.gov/library.htm>  
 Catalog: <http://catalog.greatfallslibrary.org/uhtbin/cgiisirsi/76PmE47b7S/MSDB/277380043/60/1180/X>  
 OCLC, Statewide Databases

**Morningside Elementary School**

Kyle Parker, Librarian  
 Cascade County  
 4119 7th Ave N Great Falls, MT 59401  
 (406) 268-6969  
 Web Site: [http://www.gfps.k12.mt.us/OCLC, Statewide Databases](http://www.gfps.k12.mt.us/OCLC_Statewide_Databases)

**Mountain View Elementary School**

AnnMarie Fraser, School Librarian  
 Cascade County  
 3420 15th Ave S Great Falls, MT 59405  
 (406) 268-7305  
 Web Site: [http://www.gfps.k12.mt.us/OCLC, Statewide Databases](http://www.gfps.k12.mt.us/OCLC_Statewide_Databases)

**North Middle School**

Leah Schmirler, School Library Media Specialist  
 Cascade County  
 2601 8th St NE Great Falls, MT 59404  
 (406) 268-6574  
 Web Site: <http://www.gfps.k12.mt.us/Schools/North/web/LIBRARY.htm>  
 OCLC, Statewide Databases

**Ovando Elementary**

Linda Hugulet, Librarian  
 Powell County  
 PO Box 176 Ovando, MT 59854  
 (406) 793-5722  
 OCLC, Statewide Databases

**Paris Gibson Alternative High School Library**

Rosemary Smith, School Librarian  
 Cascade County  
 2400 Central Avenue Great Falls, MT 59401  
 (406) 268-6669  
 Web Site: [http://www.gfps.k12.mt.us/OCLC, Statewide Databases](http://www.gfps.k12.mt.us/OCLC_Statewide_Databases)

**Paris Gibson Middle School**

Luella Kinzler, School Librarian  
 Cascade County  
 4040 Central Ave Great Falls, MT 59405  
 (406) 268-6667  
 Web Site: [http://www.gfps.k12.mt.us/OCLC, Statewide Databases](http://www.gfps.k12.mt.us/OCLC_Statewide_Databases)

**Pendroy Elementary**

Shawna Burgmaier, Supervising Teacher/Librarian  
 Teton County  
 PO Box 65 Pendroy, MT 59467  
 (406) 469-2299  
 OCLC, Statewide Databases

**Powell County High School Library**

Carol Rhoads, School Librarian  
 Powell County  
 Deer Lodge, MT 59722  
 (406) 846-2757  
 Web Site: <http://www.pchs.dl.k12.mt.us/educators/Lib/index.htm>  
 OCLC, Statewide Databases

**Power Public School Library**

Shelly Vick, School Librarian  
 Teton County  
 PO Box 155 Power, MT 59468  
 (406) 463-2251  
 Web Site: [www.power.k12.mt.us/Montana Shared Catalog, OCLC, Statewide Databases](http://www.power.k12.mt.us/Montana_Shared_Catalog,OCLC_Statewide_Databases)

**Riverview Elementary School**

Leann Svir, School Librarian  
 Cascade County  
 100 Smelter Ave NW Great Falls, MT 59404  
 (406) 268-7038  
 Web Site: [http://www.gfps.k12.mt.us/OCLC, Statewide Databases](http://www.gfps.k12.mt.us/OCLC_Statewide_Databases)

**Robert H. Radley School**

Chris Dexter, School Librarian  
 Lewis and Clark County  
 PO Box 1280 East Helena, MT 59635  
 (406) 227-7710  
 Web Site: <http://www.ehps.k12.mt.us/1532108181757677/site/default.asp>  
 OCLC, Statewide Databases

**Roosevelt Elementary School**

Vicki Allen, School Librarian  
 Cascade County  
 2501 2nd Ave N Great Falls, MT 59405  
 (406) 268-7045  
 Web Site: [http://www.gfps.k12.mt.us/OCLC, Statewide Databases](http://www.gfps.k12.mt.us/OCLC_Statewide_Databases)

**Rossiter Elementary School Library**

Laura Trapp, School Librarian  
 Lewis and Clark County  
 1497 Sierra Road East Helena, MT 59602  
 (406) 324-1519  
 Web Site: <http://destiny.hsd1.org/common/welcome.jsp?site=113>  
 Catalog: <http://destiny.hsd1.org/common/welcome.jsp>  
 OCLC, Statewide Databases

**Sacajawea Elementary School**

Sandy Johnson, Assistant Librarian  
 Cascade County  
 630 Sacajawea Dr Great Falls, MT 59404  
 (406) 268-7086  
 Web Site: [http://www.gfps.k12.mt.us/OCLC, Statewide Databases](http://www.gfps.k12.mt.us/OCLC_Statewide_Databases)

**Simms High School Library**

Mary Jane Johnson, School Librarian  
 Cascade County  
 PO Box 380 Simms, MT 59477  
 (406) 264-5111  
 Montana Shared Catalog, OCLC, Statewide Databases

**Smith Elementary School Library**

Shelley Pelc, School Librarian  
 Lewis and Clark County  
 2320 5th Ave Helena, MT 59601  
 (406) 324-1527  
 Web Site: <http://destiny.hsd1.org/>  
 Catalog: <http://destiny.hsd1.org/common/welcome>  
 OCLC, Statewide Databases

**Sunnyside Elementary School Library**

Jamie Williams, School Library Media Specialist  
 Cascade County  
 1800 19th St S Great Falls, MT 59405  
 (406) 268-7115  
 OCLC, Statewide Databases

**Trinity Elementary Library**

Katrina Chaney, Supervising Teacher/Librarian  
 Lewis and Clark County  
 PO Box 523 Canyon Creek, MT 59633  
 (406) 368-2285  
 OCLC, Statewide Databases

**Ulm Public School Library**

Ruth Stokes-Gliko, School Librarian  
 Cascade County  
 PO Box 189 Ulm, MT 59485  
 (406) 866-3313  
 OCLC, Statewide Databases

**Valley View Elementary School Library**

Jamie Williams, School Library Media Specialist  
 Cascade County  
 900 Ave A NW Great Falls, MT 59404  
 (406) 268-7173  
 OCLC, Statewide Databases

**Vaughn Public Schools Library**

Carol Idland, School Librarian  
 Cascade County  
 PO Box 279 Vaughn, MT 59487  
 (406) 965-2231  
 OCLC, Statewide Databases

**Warren School Library**

Lynn Trenary, School Librarian  
 Lewis and Clark County  
 2690 Old York Rd Helena, MT 59602  
 (406) 324-1605  
 Web Site: [http://www.helena.k12.mt.us/OCLC, Statewide Databases](http://www.helena.k12.mt.us/OCLC_Statewide_Databases)



**West Elementary School Library**

Marilyn Hamer, School Librarian  
 Cascade County  
 1205 1st Ave NW Great Falls, MT 59404  
 (406) 268-7184  
 Web Site: <http://www.gfps.k12.mt.us/west/index.html>  
*OCLC, Statewide Databases*

**Whittier Elementary School Library**

Carol Noble, Library Media Specialist  
 Cascade County  
 305 8th St N Great Falls, MT 59404  
 (406) 268-7230  
*OCLC, Statewide Databases*

**Wolf Creek Elementary Library**

Valerie Cundall, Supervising Teacher/Librarian  
 Lewis and Clark County  
 c/o B J Young/Box 196 Wolf Creek, MT 59648  
 (406) 431-6693  
*OCLC, Statewide Databases*

**Special****Arden G. Hill Memorial Library**

Dixie-Linda Paronto, Library Director  
 Cascade County  
 7356 4th Avenue N Malmstrom AFB, MT 59402  
 (406) 731-4638  
 Web Site: <http://www.341fss.com>  
 Catalog: <http://slk020.liberty3.net/AFSC/gateway/gateway.exe>  
*OCLC, Statewide Databases*

**Benefis Health Sciences Library**

Pam Windmueller, Administration  
 Cascade County  
 1101 26th ST S Great Falls, MT 59403  
 (406) 455-5594  
*OCLC, Statewide Databases*

**Cascade County Historical****Society Archives**

Judy Ellinghausen, Library Director  
 Cascade County  
 422 2nd St S Great Falls, MT 59405  
 (406) 452-3462  
 Web Site: <http://www.mtgr.mtlib.org/www/library/cchs.html>  
*Statewide Databases*

**Census and Economic Information Center**

Mary Craige, Research Bureau Chief  
 Lewis and Clark County  
 PO Box 200505 Helena, MT 59620  
 (406) 841-2740  
 Web Site: <http://ceic.mt.gov>  
*OCLC, Statewide Databases*

**DNRC Water Resources Library**

Cindy Forgey, Administrative Assistant  
 Lewis and Clark County  
 PO Box 201601 Helena, MT 59620  
 (406) 444-6601  
 Web Site: <http://msl.state.mt.us/lisd/library-dnrc.htm>  
*OCLC, Statewide Databases*

**E. L. Weigand Art Library Resource Center**

Liz Gans, Executive Director  
 Lewis and Clark County  
 12 East Lawrence Street Helena, MT 59601  
 (406) 442-6400  
 Web Site: <http://www.holtermuseum.org/>  
*OCLC, Statewide Databases*

**EPA Superfund Records Center**

Lori Hallauer, Information Services Manager  
 Lewis and Clark County  
 Helena, MT 59626  
 (406) 457-5046  
*OCLC, Statewide Databases*

**Frederic G. Renner Library**

Sharon McGowan, Library Director  
 Cascade County  
 400 13 Street North Great Falls, MT 59401  
 (406) 727-8787  
 Web Site: <http://www.cmussell.org>  
*OCLC, Statewide Databases*

**Kay McKenna Memorial Library**

Carol Bock, Library Director  
 Lewis and Clark County  
 7653 Canyon Ferry Road Helena, MT 59602  
 (406) 475-3638  
 Web Site: <http://www.MontanaLearning.org>  
*OCLC, Statewide Databases*

**LH Lending Library**

Patti Hansen, Library Director  
 Powell County  
 475 Mullan Trail Gold Creek, MT 59733  
 (406) 288-3436  
*OCLC, Statewide Databases*

**McLaughlin Research Institute Library**

Barbara Crain, Library Director  
 Cascade County  
 1520 23rd St. South Great Falls, MT 59405  
 (406) 454-6007  
 Web Site: <http://www.montana.edu/wwwmri/>  
*OCLC, Statewide Databases*

**Montana Department of****Transportation Library**

Susan Sillick, Research Bureau Chief  
 Lewis and Clark County  
 PO Box 201001 Helena, MT 59620  
 (406) 444-6338  
 Web Site: <http://www.mdt.mt.gov/research/unique/services.shtml>  
 Catalog: <http://mtscprod.msl.mt.gov/uhtbin/cgisirsi/x/0/0/49>  
*Montana Shared Catalog, OCLC, Statewide Databases*

**Montana DEQ Water Quality****Planning Bureau Library**

Pamela Arroues, Library Director  
 Lewis and Clark County  
 PO Box 200901 Helena, MT 59620  
 (406) 444-6763  
 Web Site: <http://deq.mt.gov/wqinfo/Wqlibrary>  
 Catalog: <http://svc2.mt.gov/deq/wqlibrarysearch>  
*OCLC, Statewide Databases*

**Montana Historical Society****Research Center**

Molly Kruckenberg, Research Bureau Chief  
 Lewis and Clark County  
 PO Box 201201 Helena, MT 59620  
 (406) 444-2681  
 Web Site: <http://www.montanahistoricalociety.org>  
 Catalog: <http://mtscprod.msl.mt.gov/uhtbin/cgisirsi/x/0/0/49>  
*Montana Shared Catalog, OCLC, Montana Memory Project Participant, Statewide Databases*

**Montana Legislative Reference Center**

Sonia Gavin, Library Director  
 Lewis and Clark County  
 PO Box 201706 Helena, MT 59620  
 (406) 444-3598  
 Web Site: <http://leg.mt.gov/css/Services%20Division/Reference%20Center/default.asp>  
 Catalog: <http://mtscprod.msl.mt.gov/uhtbin/cgisirsi/x/0/0/49>  
*Montana Shared Catalog, OCLC, Statewide Databases*

**Montana Office of Public Instruction Resource Center**

Cheri Bergeron, Library Director  
 Lewis and Clark County  
 PO Box 202501 Helena, MT 59620  
 (406) 444-2082  
 Web Site: <http://www.opi.mt.gov>  
 Catalog: <http://mtscprod.msl.mt.gov/uhtbin/cgisirsi/x/0/0/49>  
*Montana Shared Catalog, OCLC, Statewide Databases*

**Montana Public Service****Commission Library**

Judy Scheier, Assistant Commission Secretary  
 Lewis and Clark County  
 PO Box 202601 Helena, MT 59620  
 (406) 444-6199  
 Catalog: <http://mtscprod.msl.mt.gov/uhtbin/cgisirsi/x/0/0/49>  
*Montana Shared Catalog, OCLC, Statewide Databases*

**Montana State Genealogical****Society Library**

Karen Huck, Librarian  
 Lewis and Clark County  
 P.O. Box 5313 Helena, MT 59604  
 (406) 447-1690  
 Web Site: <http://www.rootsweb.com/~mtlscgs/>  
 Catalog: <http://mtscprod.msl.mt.gov/uhtbin/cgisirsi/x/0/0/49>  
*Montana Shared Catalog, OCLC, Statewide Databases*

**Montana State Library**

Darlene Staffeldt, State Librarian  
 Lewis and Clark County  
 PO Box 201800 Helena, MT 59620  
 (406) 444-3115  
 Web Site: <http://msl.mt.gov>  
 Catalog: <http://mtscprod.msl.mt.gov/uhtbin/cgisirsi/x/0/0/49>  
*Montana Shared Catalog, OCLC, Montana Memory Project Participant, Statewide Databases*

**Native American Library**

Marilyn Hamer, School Librarian  
 Cascade County  
 1100 Sixth Ave S Great Falls, MT 59405  
 (406) 268-6847  
 Web Site: <http://www.gfps.k12.mt.us/>  
*OCLC, Statewide Databases*

**Shodair Childrens Hospital****Professional Library**

Marjorie MCNellis, Library Staff Member  
Lewis and Clark County  
PO Box 5539 Helena, MT 59604  
(406) 444-7518  
*OCLC, Statewide Databases*

**St Paul's United Methodist Church**

Bruce Newell, Librarian  
Lewis and Clark County  
512 Logan Helena, MT 59601  
(406) 442-5643  
*OCLC, Statewide Databases*

**St Peter's Hospital Medical Library**

Sandra Moisey-Scherer, Medical Librarian  
Lewis and Clark County  
2475 Broadway Helena, MT 59601  
(406) 447-2462  
Web Site: <http://www.stpetes.org/>  
*OCLC, Statewide Databases*

**State Law Library of Montana**

Judy Meadows, Library Director  
Lewis and Clark County  
PO Box 203004 Helena, MT 59620  
(406) 444-3660  
Web Site: <http://courts.mt.gov/library>  
Catalog: <http://mtscprod.msl.mt.gov/uhtbin/cgisirsi/x/0/0/49>  
*Montana Shared Catalog, OCLC, Statewide Databases*

**The Archie Bray Foundation Library**

Rachel Hicks, Administrative Coordinator  
Lewis and Clark County  
2915 Country Club Avenue Helena, MT 59602  
(406) 443-3502  
Web Site: <http://www.archiebray.org/>  
*OCLC, Statewide Databases*

**U.S. Geological Survey Library**

Lori Tuck, Hydrologist  
Lewis and Clark County  
3162 Bozeman Avenue Helena, MT 59601  
(406) 457-5900  
*OCLC, Statewide Databases*

**VA Medical Library**

Gail Wilkerson, Library Director  
Lewis and Clark County  
PO Box 196 Fort Harrison, MT 59636  
(406) 447-7366  
*OCLC, Statewide Databases*

**William P. Sherman Library and Archives**

Jessica Godfrey, Library Director  
Cascade County  
P.O. Box 3434 Great Falls, MT 59403  
(406) 454-1234  
Web Site: <http://www.lewisandclark.org>  
Catalog: <http://lewisandclark.pastperfect-online.com/37925cgi/mweb.exe>  
*OCLC, Statewide Databases*

# State of Montana Index

	Montana	United States	Rank in US
<b>Geography</b>			
Population per square mile 2000	6.2	79.6	49
Households 2000 (complete count)	358,667	105,480,101	44
Persons per household 2000 (complete count)	2.5	2.6	46
<b>Resident Population</b>			
Estimate (July 1) 2009	974,989	307,006,550	44
Estimate, percent change - April 1, 2000 to July 1, 2009	8.1	9.1	21
Total population estimate, net change - April 1, 2000 to July 1, 2009	72,799	25,581,948	40
April 1, 2000 (complete count)	902,195	281,421,906	44
Under 5 years (July 1 - estimate) 2009	62,438	21,299,656	43
Under 5 years, percent (July 1 - estimate) 2009	6.4	6.9	39
Under 18 years (July 1 - estimate) 2009	219,828	74,548,215	44
Under 18 years, percent (July 1 - estimate) 2009	22.5	24.3	40
65 years and over (July 1 - estimate) 2009	141,903	39,570,590	44
65 years and over, percent (July 1 - estimate) 2009	14.6	12.9	7
Total females, percent (July 1 - estimate) 2009	50.0	50.7	40
White alone (July 1 - estimate) 2009	880,107	244,298,393	43
Black alone (July 1 - estimate) 2009	7,282	39,641,060	50
American Indian and Alaska Native alone (July 1 - estimate) 2009	62,873	3,151,284	13
Asian alone (July 1 - estimate) 2009	6,810	14,013,954	49
Native Hawaiian and Other Pacific Islander alone (July 1 - estimate) 2009	707	578,353	42
Population 5 years and over, percent speaking language other than English at home, 2000	5.2	17.9	44
Civilian noninstitutionalized population, 5 years and over, with a disability 2000	145,732	49,746,248	44
<b>Vital Statistics</b>			
Births 2006	12,508	4,265,555	43
Deaths 2006	8,472	2,426,264	44
Infant deaths under one year 2006	73	28,527	48
Population 5 years and over by residence in 1995 - percent in same house, 2000 (sample)	53.6	54.1	32
Percent foreign born population 2000 (sample)	1.8	11.1	49
<b>Education</b>			
Educational attainment - persons 25 years and over - percent high school graduate or higher 2000	87.2	80.4	6
Educational attainment - persons 25 years and over - percent bachelors degree or higher 2000	24.4	24.4	22
<b>Income/Poverty</b>			
Per capita income in 1999	17,151	21,587	47
Median household income 2008	43,948	52,029	42
People of all ages in poverty - percent 2008	14	13	17
Personal income 2007	31,783	11,634,322	46
Per capita personal income 2007	33,225	38,615	40
<b>Federal</b>			
Federal Government expenditure - total FY 2008	8,842,960	2,771,782,152	46
Federal Government expenditure per capita FY 2008	9,141	9,116	22
<b>Housing</b>			
Housing unit estimates as of July 1, 2009	441,279	129,925,421	44
Housing unit estimates - net change, April 1, 2000 (base) to July 1, 2009	28,648	14,020,948	45
Housing unit estimates - percent change, April 1, 2000 (base) to July 1, 2009	6.9	12.1	40
Owner-occupied housing units - percent of total occupied housing units 2000 (complete count)	69.1	66.2	25
Median value of specified owner-occupied housing units 2000 (sample)	99,500	119,600	31
Housing units by units in structure - multiple units 2000 (sample)	15.7	26.4	43
New private housing units authorized by building permits - total 2009 (20,000-place universe)	1,686	582,963	47
Valuation of new private housing units authorized by building permits 2009 (20,000-place universe)	253,576	95,410,469	47
<b>Employment/Business</b>			
Civilian labor force 2009	498,907	154,142,000	44
Civilian labor force unemployment 2009	30,862	14,265,000	46
Civilian labor force unemployment rate 2009	6.2	9.3	47
Employment in all industries (NAICS, no code) 2007	647,427	180,943,800	44
Employment in all industries, net change 2000 - 2007	88,372	14,185,000	34
Employment in government (NAICS 92) 2007	93,107	24,257,000	45
Earnings in all industries (NAICS, no code) 2007	22,293,038	8,848,240,000	47
Earnings in all industries (NAICS, no code), average earnings per job 2007	34,433	48,900	51
Average travel time to work for workers 16 years and over not working at home 2000 (in minutes)	18	26	49
Private nonfarm establishments 2007	37,755	7,705,018	42
Private nonfarm employment for pay period including March 12, 2007	37,755	7,705,018	42
Private nonfarm employment for pay period including March 12, 2007, percent change 2000-2007	353,807.0	120,604,265.0	46
Nonemployer: total (NAICS 00) - establishments, 2007	83,999	21,708,021	43
Accommodation and Food Services: total (NAICS 72) - sales of establishments with payroll 2002	1,537,986	449,498,718	45
Total number of firms 2002	100,402	22,974,655	42
Manufacturing: total (NAICS 31-33) - value of shipments 2002	4,987,577	3,916,136,712	47
Wholesale trade: total (NAICS 42) - sales of establishments with payroll 2002	7,223,420	4,634,755,112	47
Retail trade: total (NAICS 44-45) - sales of establishments with payroll 2002	10,122,625	3,056,421,997	45
Retail trade: total (NAICS 44-45) - sales of establishments with payroll per capita 2002	11,116	10,615	17
Land in farms (NAICS) 2007 (acres) (adjusted)	61,388,462	922,095,840	2

Source: U.S. Census Bureau



# Cascade County Index

	County	Montana	Rank in MT
<b>Geography</b>			
Population per square mile 2000	29.8	6.2	4
Households 2000 (complete count)	32,547	358,667	3
Persons per household 2000 (complete count)	2.4	2.5	28
<b>Resident Population</b>			
Estimate (July 1) 2009	82,178	974,989	5
Estimate, percent change - April 1, 2000 to July 1, 2009	2.3	8.1	14
Total population estimate, net change - April 1, 2000 to July 1, 2009	1,821	72,799	8
April 1, 2000 (complete count)	80,357	902,195	3
Under 5 years (July 1 - estimate) 2009	5,585	62,438	5
Under 5 years, percent (July 1 - estimate) 2009	6.8	6.4	10
Under 18 years (July 1 - estimate) 2009	18,817	219,828	4
Under 18 years, percent (July 1 - estimate) 2009	22.9	22.5	20
65 years and over (July 1 - estimate) 2009	13,036	141,903	2
65 years and over, percent (July 1 - estimate) 2009	15.9	14.6	38
Total females, percent (July 1 - estimate) 2009	50.5	50.0	14
White alone (July 1 - estimate) 2009	74,351	880,107	5
Black alone (July 1 - estimate) 2009	1,511	7,282	2
American Indian and Alaska Native alone (July 1 - estimate) 2009	3,810	62,873	6
Asian alone (July 1 - estimate) 2009	530	6,810	4
Native Hawaiian and Other Pacific Islander alone (July 1 - estimate) 2009	83	707	3
Population 5 years and over, percent speaking language other than English at home, 2000	5	5	18
Civilian noninstitutionalized population, 5 years and over, with a disability 2000	13,958	145,732	3
<b>Vital Statistics</b>			
Births 2006	1,166	12,508	5
Deaths 2006	735	8,472	3
Infant deaths under one year 2006	5	73	5
Population 5 years and over by residence in 1995 - percent in same house, 2000 (sample)	52.8	53.6	49
Percent foreign born population 2000 (sample)	2.4	1.8	7
<b>Education</b>			
Educational attainment - persons 25 years and over - percent high school graduate or higher 2000	87.1	87.2	16
Educational attainment - persons 25 years and over - percent bachelors degree or higher 2000	21.5	24.4	17
<b>Income/Poverty</b>			
Per capita income in 1999	17,566	17,151	11
Median household income 2008	42,528	43,948	16
People of all ages in poverty - percent 2008	14	14	32
Personal income 2007	2,815	31,783	5
Per capita personal income 2007	34,417	33,225	11
<b>Federal</b>			
Federal Government expenditure - total FY 2008	962,942	8,842,960	2
Federal Government expenditure per capita FY 2008	11,739	9,141	22
<b>Housing</b>			
Housing unit estimates as of July 1, 2009	36,526	441,279	5
Housing unit estimates - net change, April 1, 2000 (base) to July 1, 2009	1,301	28,648	5
Housing unit estimates - percent change, April 1, 2000 (base) to July 1, 2009	3.7	6.9	9
Owner-occupied housing units - percent of total occupied housing units 2000 (complete count)	64.9	69.1	49
Median value of specified owner-occupied housing units 2000 (sample)	92,500	99,500	14
Housing units by units in structure - multiple units 2000 (sample)	23.4	15.7	2
New private housing units authorized by building permits - total 2009 (20,000-place universe)	187	1,686	4
Valuation of new private housing units authorized by building permits 2009 (20,000-place universe)	32,422	253,576	3
<b>Employment/Business</b>			
Civilian labor force 2009	40,485	498,907	5
Civilian labor force unemployment 2009	1,975	30,862	5
Civilian labor force unemployment rate 2009	4.9	6.2	29
Employment in all industries (NAICS, no code) 2007	51,552	647,427	5
Employment in all industries, net change 2000 - 2007	2,905	88,372	7
Employment in government (NAICS 92) 2007	9,333	93,107	4
Earnings in all industries (NAICS, no code) 2007	1,997,165	22,293,038	5
Earnings in all industries (NAICS, no code), average earnings per job 2007	38,741	34,433	6
Average travel time to work for workers 16 years and over not working at home 2000 (in minutes)	15.9	17.7	36
Private nonfarm establishments 2007	2,577	37,755	5
Private nonfarm employment for pay period including March 12, 2007	2,577	37,755	5
Private nonfarm employment for pay period including March 12, 2007, percent change 2000-2007	29,611.0	353,807.0	5
Nonemployer: total (NAICS 00) - establishments, 2007	4,952	83,999	6
Accommodation and Food Services: total (NAICS 72) - sales of establishments with payroll 2002	129,619	1,537,986	5
Total number of firms 2002	6,732	100,402	5
Manufacturing: total (NAICS 31-33) - value of shipments 2002	264,453	4,987,577	5
Wholesale trade: total (NAICS 42) - sales of establishments with payroll 2002	906,765	7,223,420	1
Retail trade: total (NAICS 44-45) - sales of establishments with payroll 2002	1,011,663	10,122,625	5
Retail trade: total (NAICS 44-45) - sales of establishments with payroll per capita 2002	12,683	11,116	6
Land in farms (NAICS) 2007 (acres) (adjusted)	1,379,645	61,388,462	17

Source: U.S. Census Bureau

# Lewis and Clark County Index

	County	Montana	Rank in MT
<b>Geography</b>			
Population per square mile 2000	16.1	6.2	7
Households 2000 (complete count)	22,850	358,667	6
Persons per household 2000 (complete count)	2.4	2.5	36
<b>Resident Population</b>			
Estimate (July 1) 2009	61,942	974,989	6
Estimate, percent change - April 1, 2000 to July 1, 2009	11.2	8.1	7
Total population estimate, net change - April 1, 2000 to July 1, 2009	6,226	72,799	5
April 1, 2000 (complete count)	55,716	902,195	6
Under 5 years (July 1 - estimate) 2009	3,926	62,438	6
Under 5 years, percent (July 1 - estimate) 2009	6.3	6.4	18
Under 18 years (July 1 - estimate) 2009	13,936	219,828	6
Under 18 years, percent (July 1 - estimate) 2009	22.5	22.5	23
65 years and over (July 1 - estimate) 2009	8,177	141,903	6
65 years and over, percent (July 1 - estimate) 2009	13.2	14.6	48
Total females, percent (July 1 - estimate) 2009	50.3	50.0	19
White alone (July 1 - estimate) 2009	58,848	880,107	6
Black alone (July 1 - estimate) 2009	241	7,282	6
American Indian and Alaska Native alone (July 1 - estimate) 2009	1,314	62,873	11
Asian alone (July 1 - estimate) 2009	478	6,810	6
Native Hawaiian and Other Pacific Islander alone (July 1 - estimate) 2009	37	707	6
Population 5 years and over, percent speaking language other than English at home, 2000	4	5	30
Civilian noninstitutionalized population, 5 years and over, with a disability 2000	8,874	145,732	5
<b>Vital Statistics</b>			
Births 2006	787	12,508	6
Deaths 2006	490	8,472	5
Infant deaths under one year 2006	6	73	3
Population 5 years and over by residence in 1995 - percent in same house, 2000 (sample)	53.2	53.6	48
Percent foreign born population 2000 (sample)	1.6	1.8	24
<b>Education</b>			
Educational attainment - persons 25 years and over - percent high school graduate or higher 2000	91.4	87.2	2
Educational attainment - persons 25 years and over - percent bachelors degree or higher 2000	31.6	24.4	3
<b>Income/Poverty</b>			
Per capita income in 1999	18,763	17,151	3
Median household income 2008	49,959	43,948	4
People of all ages in poverty - percent 2008	11	14	51
Personal income 2007	2,191	31,783	6
Per capita personal income 2007	36,553	33,225	3
<b>Federal</b>			
Federal Government expenditure - total FY 2008	1,001,046	8,842,960	55
Federal Government expenditure per capita FY 2008	16,431	9,141	7
<b>Housing</b>			
Housing unit estimates as of July 1, 2009	26,687	441,279	6
Housing unit estimates - net change, April 1, 2000 (base) to July 1, 2009	1,015	28,648	6
Housing unit estimates - percent change, April 1, 2000 (base) to July 1, 2009	4.0	6.9	7
Owner-occupied housing units - percent of total occupied housing units 2000 (complete count)	70.1	69.1	43
Median value of specified owner-occupied housing units 2000 (sample)	112,200	99,500	7
Housing units by units in structure - multiple units 2000 (sample)	18.8	15.7	6
New private housing units authorized by building permits - total 2009 (20,000-place universe)	95	1,686	5
Valuation of new private housing units authorized by building permits 2009 (20,000-place universe)	16,672	253,576	6
<b>Employment/Business</b>			
Civilian labor force 2009	33,893	498,907	6
Civilian labor force unemployment 2009	1,541	30,862	6
Civilian labor force unemployment rate 2009	4.5	6.2	38
Employment in all industries (NAICS, no code) 2007	45,325	647,427	6
Employment in all industries, net change 2000 - 2007	6,314	88,372	5
Employment in government (NAICS 92) 2007	10,568	93,107	2
Earnings in all industries (NAICS, no code) 2007	1,785,290	22,293,038	6
Earnings in all industries (NAICS, no code), average earnings per job 2007	39,389	34,433	4
Average travel time to work for workers 16 years and over not working at home 2000 (in minutes)	16.7	17.7	30
Private nonfarm establishments 2007	2,208	37,755	6
Private nonfarm employment for pay period including March 12, 2007	2,208	37,755	6
Private nonfarm employment for pay period including March 12, 2007, percent change 2000-2007	25,135.0	353,807.0	6
Nonemployer: total (NAICS 00) - establishments, 2007	5,259	83,999	5
Accommodation and Food Services: total (NAICS 72) - sales of establishments with payroll 2002	89,215	1,537,986	6
Total number of firms 2002	6,154	100,402	6
Manufacturing: total (NAICS 31-33) - value of shipments 2002	0	4,987,577	19
Wholesale trade: total (NAICS 42) - sales of establishments with payroll 2002	264,196	7,223,420	5
Retail trade: total (NAICS 44-45) - sales of establishments with payroll 2002	649,561	10,122,625	6
Retail trade: total (NAICS 44-45) - sales of establishments with payroll per capita 2002	11,502	11,116	8
Land in farms (NAICS) 2007 (acres) (adjusted)	971,240	61,388,462	27

Source: U.S. Census Bureau

# Powell County Index

	County	Montana	Rank in MT
<b>Geography</b>			
Population per square mile 2000	3.1	6.2	26
Households 2000 (complete count)	2,422	358,667	31
Persons per household 2000 (complete count)	2.4	2.5	35
<b>Resident Population</b>			
Estimate (July 1) 2009	7,089	974,989	28
Estimate, percent change - April 1, 2000 to July 1, 2009	-1.3	8.1	25
Total population estimate, net change - April 1, 2000 to July 1, 2009	-91	72,799	26
April 1, 2000 (complete count)	7,180	902,195	28
Under 5 years (July 1 - estimate) 2009	247	62,438	33
Under 5 years, percent (July 1 - estimate) 2009	3.5	6.4	54
Under 18 years (July 1 - estimate) 2009	1,186	219,828	32
Under 18 years, percent (July 1 - estimate) 2009	16.7	22.5	54
65 years and over (July 1 - estimate) 2009	1,068	141,903	29
65 years and over, percent (July 1 - estimate) 2009	15.1	14.6	43
Total females, percent (July 1 - estimate) 2009	38.6	50.0	56
White alone (July 1 - estimate) 2009	6,457	880,107	24
Black alone (July 1 - estimate) 2009	43	7,282	16
American Indian and Alaska Native alone (July 1 - estimate) 2009	343	62,873	21
Asian alone (July 1 - estimate) 2009	60	6,810	17
Native Hawaiian and Other Pacific Islander alone (July 1 - estimate) 2009	0	707	43
Population 5 years and over, percent speaking language other than English at home, 2000	4	5	37
Civilian noninstitutionalized population, 5 years and over, with a disability 2000	1,180	145,732	29
<b>Vital Statistics</b>			
Births 2006	55	12,508	32
Deaths 2006	68	8,472	30
Infant deaths under one year 2006	1	73	23
Population 5 years and over by residence in 1995 - percent in same house, 2000 (sample)	53.4	53.6	47
Percent foreign born population 2000 (sample)	0.6	1.8	56
<b>Education</b>			
Educational attainment - persons 25 years and over - percent high school graduate or higher 2000	81.9	87.2	42
Educational attainment - persons 25 years and over - percent bachelors degree or higher 2000	13.1	24.4	55
<b>Income/Poverty</b>			
Per capita income in 1999	13,816	17,151	49
Median household income 2008	38,836	43,948	27
People of all ages in poverty - percent 2008	17	14	16
Personal income 2007	163	31,783	33
Per capita personal income 2007	22,852	33,225	55
<b>Federal</b>			
Federal Government expenditure - total FY 2008	65,293	8,842,960	17
Federal Government expenditure per capita FY 2008	9,273	9,141	32
<b>Housing</b>			
Housing unit estimates as of July 1, 2009	2,916	441,279	30
Housing unit estimates - net change, April 1, 2000 (base) to July 1, 2009	-14	28,648	48
Housing unit estimates - percent change, April 1, 2000 (base) to July 1, 2009	-0.5	6.9	42
Owner-occupied housing units - percent of total occupied housing units 2000 (complete count)	71.3	69.1	35
Median value of specified owner-occupied housing units 2000 (sample)	73,500	99,500	24
Housing units by units in structure - multiple units 2000 (sample)	7.6	15.7	31
New private housing units authorized by building permits - total 2009 (20,000-place universe)	0	1,686	51
Valuation of new private housing units authorized by building permits 2009 (20,000-place universe)	0	253,576	51
<b>Employment/Business</b>			
Civilian labor force 2009	2,663	498,907	31
Civilian labor force unemployment 2009	222	30,862	27
Civilian labor force unemployment rate 2009	8.3	6.2	10
Employment in all industries (NAICS, no code) 2007	3,620	647,427	30
Employment in all industries, net change 2000 - 2007	27	88,372	43
Employment in government (NAICS 92) 2007	1,135	93,107	16
Earnings in all industries (NAICS, no code) 2007	111,857	22,293,038	30
Earnings in all industries (NAICS, no code), average earnings per job 2007	30,900	34,433	18
Average travel time to work for workers 16 years and over not working at home 2000 (in minutes)	22.3	17.7	13
Private nonfarm establishments 2007	167	37,755	33
Private nonfarm employment for pay period including March 12, 2007	167	37,755	33
Private nonfarm employment for pay period including March 12, 2007, percent change 2000-2007	1,156.0	353,807.0	33
Nonemployer: total (NAICS 00) - establishments, 2007	514	83,999	27
Accommodation and Food Services: total (NAICS 72) - sales of establishments with payroll 2002	7,610	1,537,986	28
Total number of firms 2002	606	100,402	30
Manufacturing: total (NAICS 31-33) - value of shipments 2002	0	4,987,577	33
Wholesale trade: total (NAICS 42) - sales of establishments with payroll 2002	0	7,223,420	43
Retail trade: total (NAICS 44-45) - sales of establishments with payroll 2002	22,652	10,122,625	38
Retail trade: total (NAICS 44-45) - sales of establishments with payroll per capita 2002	3,217	11,116	50
Land in farms (NAICS) 2007 (acres) (adjusted)	670,354	61,388,462	41

Source: U.S. Census Bureau

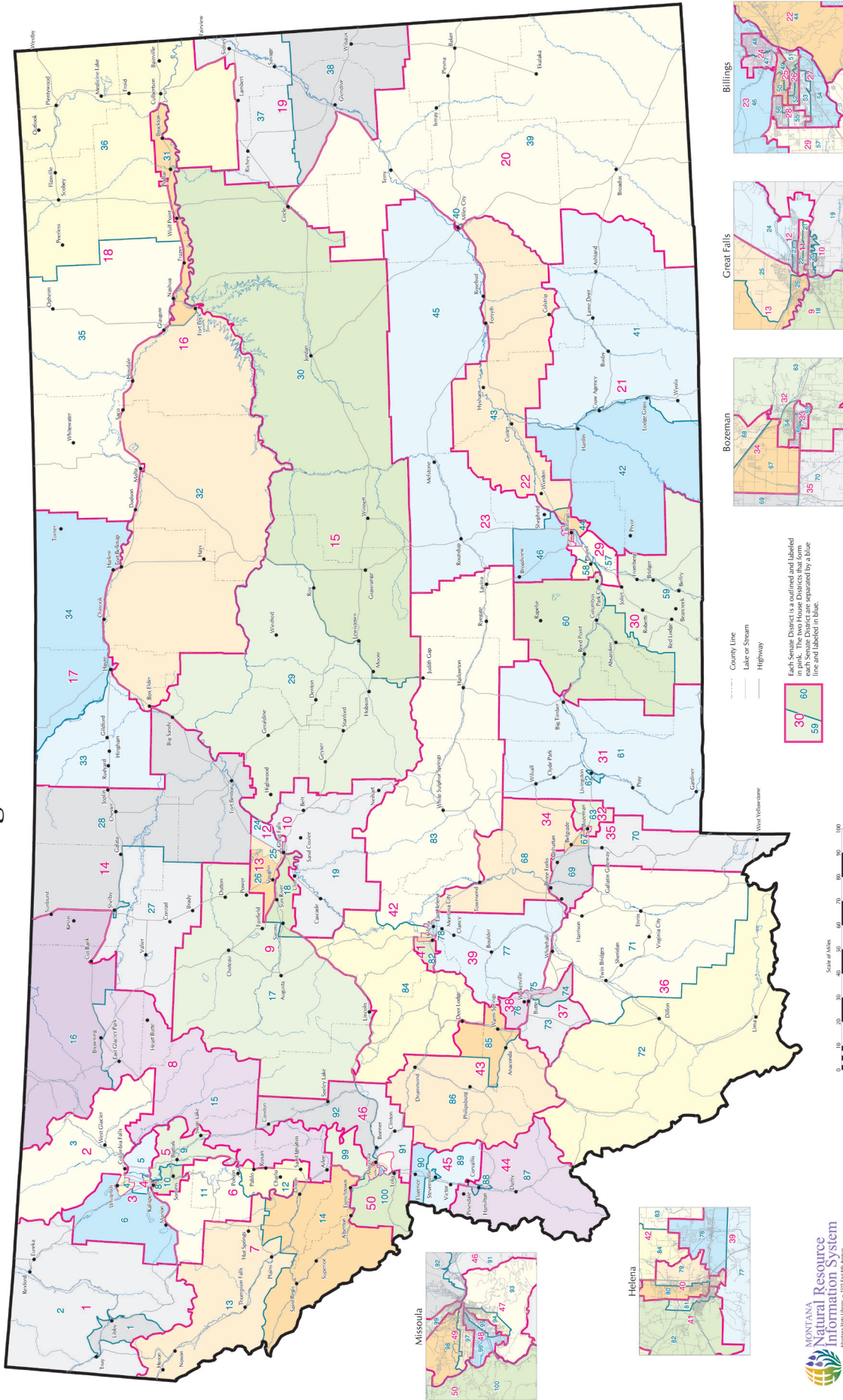


# Teton County Index

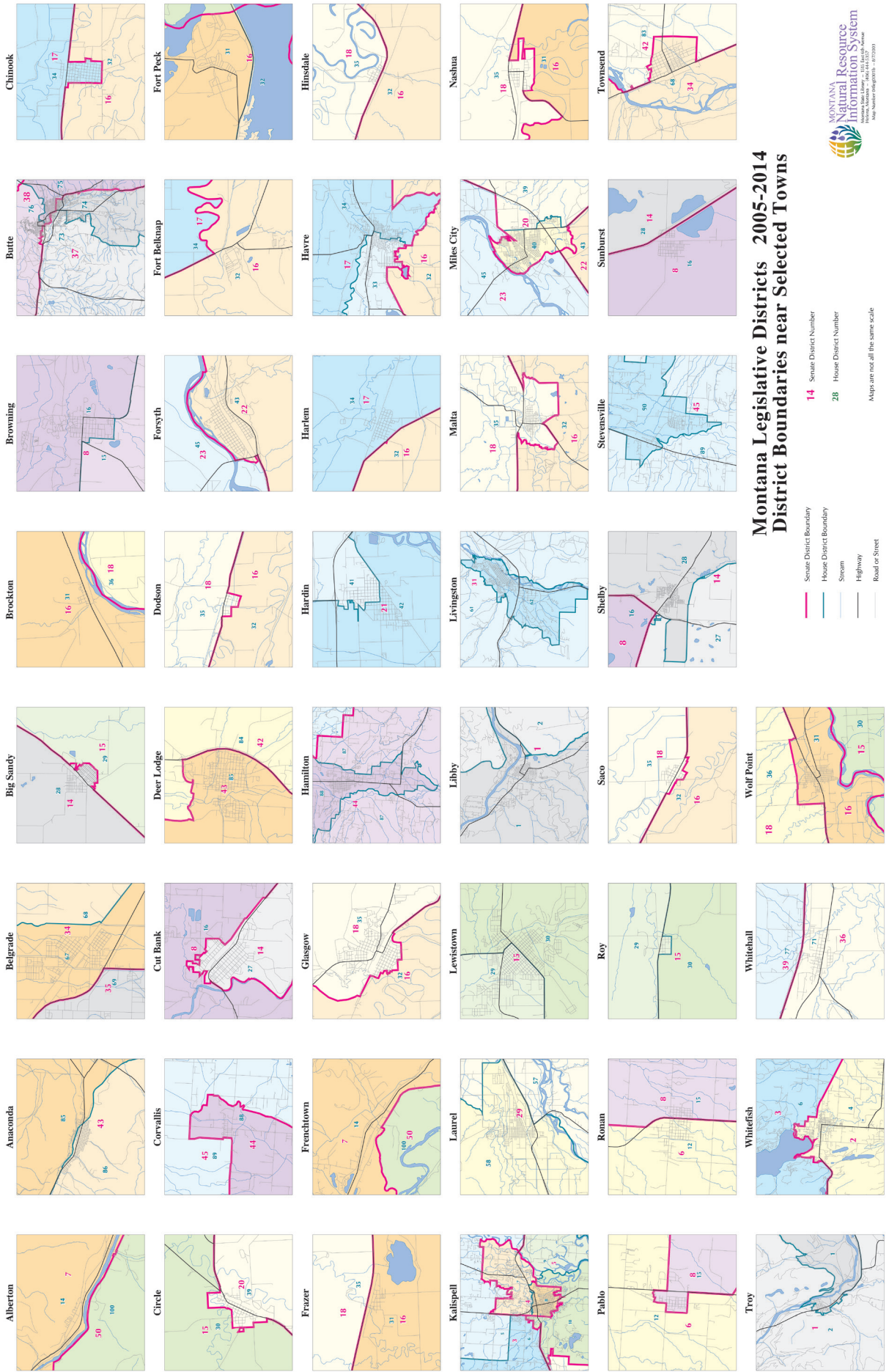
	County	Montana	Rank in MT
<b>Geography</b>			
Population per square mile 2000	2.8	6.2	27
Households 2000 (complete count)	2,538	358,667	29
Persons per household 2000 (complete count)	2.5	2.5	11
<b>Resident Population</b>			
Estimate (July 1) 2009	6,088	974,989	31
Estimate, percent change - April 1, 2000 to July 1, 2009	-5.5	8.1	36
Total population estimate, net change - April 1, 2000 to July 1, 2009	-357	72,799	44
April 1, 2000 (complete count)	6,445	902,195	31
Under 5 years (July 1 - estimate) 2009	325	62,438	30
Under 5 years, percent (July 1 - estimate) 2009	5.3	6.4	31
Under 18 years (July 1 - estimate) 2009	1,423	219,828	30
Under 18 years, percent (July 1 - estimate) 2009	23.4	22.5	16
65 years and over (July 1 - estimate) 2009	1,185	141,903	27
65 years and over, percent (July 1 - estimate) 2009	19.5	14.6	24
Total females, percent (July 1 - estimate) 2009	51.2	50.0	4
White alone (July 1 - estimate) 2009	5,851	880,107	25
Black alone (July 1 - estimate) 2009	12	7,282	29
American Indian and Alaska Native alone (July 1 - estimate) 2009	119	62,873	32
Asian alone (July 1 - estimate) 2009	7	6,810	41
Native Hawaiian and Other Pacific Islander alone (July 1 - estimate) 2009	0	707	47
Population 5 years and over, percent speaking language other than English at home, 2000	8	5	10
Civilian noninstitutionalized population, 5 years and over, with a disability 2000	1,055	145,732	31
<b>Vital Statistics</b>			
Births 2006	63	12,508	30
Deaths 2006	44	8,472	38
Infant deaths under one year 2006	1	73	29
Population 5 years and over by residence in 1995 - percent in same house, 2000 (sample)	61.8	53.6	27
Percent foreign born population 2000 (sample)	1.5	1.8	25
<b>Education</b>			
Educational attainment - persons 25 years and over - percent high school graduate or higher 2000	83.4	87.2	33
Educational attainment - persons 25 years and over - percent bachelors degree or higher 2000	20.8	24.4	18
<b>Income/Poverty</b>			
Per capita income in 1999	14,635	17,151	41
Median household income 2008	40,111	43,948	20
People of all ages in poverty - percent 2008	13	14	36
Personal income 2007	206	31,783	29
Per capita personal income 2007	34,257	33,225	12
<b>Federal</b>			
Federal Government expenditure - total FY 2008	63,060	8,842,960	19
Federal Government expenditure per capita FY 2008	10,524	9,141	27
<b>Housing</b>			
Housing unit estimates as of July 1, 2009	2,911	441,279	31
Housing unit estimates - net change, April 1, 2000 (base) to July 1, 2009	1	28,648	27
Housing unit estimates - percent change, April 1, 2000 (base) to July 1, 2009	0.0	6.9	27
Owner-occupied housing units - percent of total occupied housing units 2000 (complete count)	75.4	69.1	16
Median value of specified owner-occupied housing units 2000 (sample)	74,700	99,500	23
Housing units by units in structure - multiple units 2000 (sample)	9.0	15.7	27
New private housing units authorized by building permits - total 2009 (20,000-place universe)	2	1,686	26
Valuation of new private housing units authorized by building permits 2009 (20,000-place universe)	148	253,576	33
<b>Employment/Business</b>			
Civilian labor force 2009	3,017	498,907	29
Civilian labor force unemployment 2009	134	30,862	34
Civilian labor force unemployment rate 2009	4.4	6.2	41
Employment in all industries (NAICS, no code) 2007	3,753	647,427	29
Employment in all industries, net change 2000 - 2007	436	88,372	22
Employment in government (NAICS 92) 2007	556	93,107	31
Earnings in all industries (NAICS, no code) 2007	102,143	22,293,038	32
Earnings in all industries (NAICS, no code), average earnings per job 2007	27,216	34,433	30
Average travel time to work for workers 16 years and over not working at home 2000 (in minutes)	19.2	17.7	20
Private nonfarm establishments 2007	209	37,755	27
Private nonfarm employment for pay period including March 12, 2007	209	37,755	27
Private nonfarm employment for pay period including March 12, 2007, percent change 2000-2007	1,194.0	353,807.0	32
Nonemployer: total (NAICS 00) - establishments, 2007	568	83,999	24
Accommodation and Food Services: total (NAICS 72) - sales of establishments with payroll 2002	2,748	1,537,986	37
Total number of firms 2002	707	100,402	26
Manufacturing: total (NAICS 31-33) - value of shipments 2002	0	4,987,577	9
Wholesale trade: total (NAICS 42) - sales of establishments with payroll 2002	9,470	7,223,420	31
Retail trade: total (NAICS 44-45) - sales of establishments with payroll 2002	37,290	10,122,625	29
Retail trade: total (NAICS 44-45) - sales of establishments with payroll per capita 2002	5,899	11,116	35
Land in farms (NAICS) 2007 (acres) (adjusted)	1,152,691	61,388,462	21

Source: U.S. Census Bureau

# Montana Legislative Districts 2005-2014

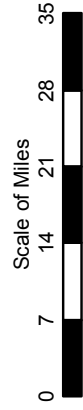
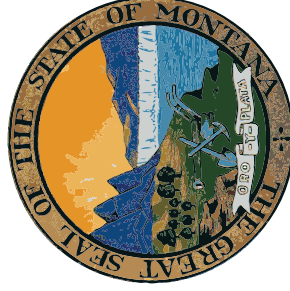
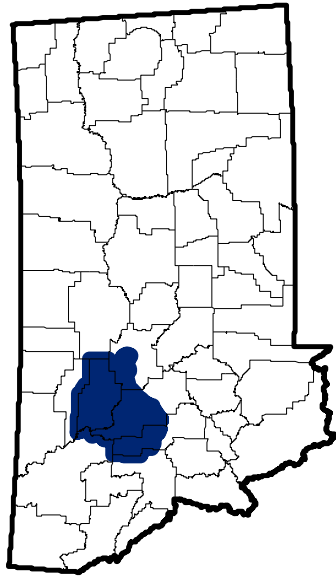




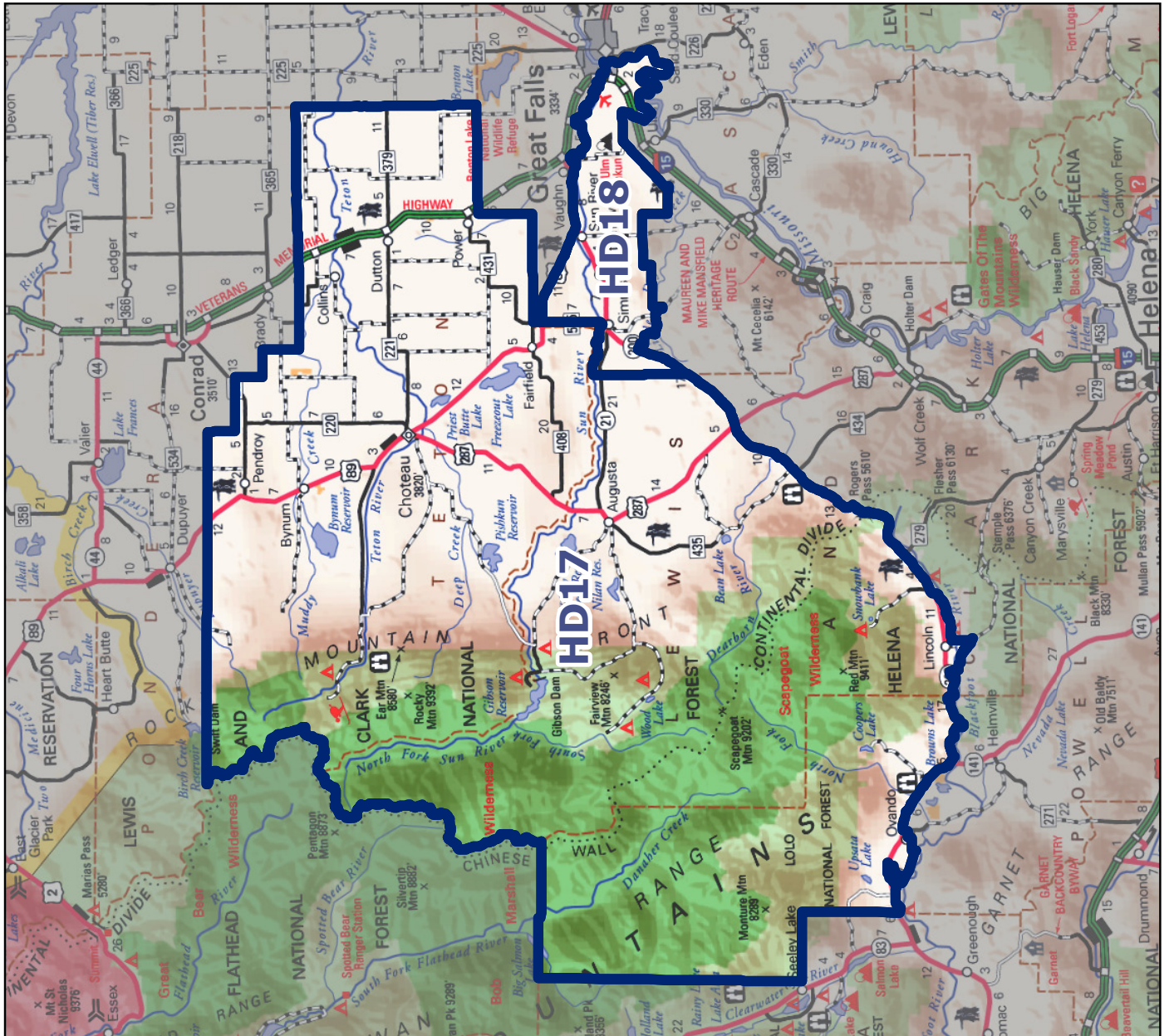




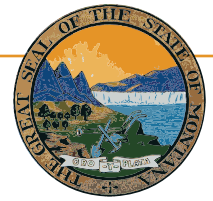
# Montana Senate District 9



Montana State Library  
**Natural Resource**  
 Information System







## Montana State Library

1515 East 6th Avenue  
PO Box 201800  
Helena, MT 59620  
(406) 444-3115

<http://msl.mt.gov>

## Statewide Library Resources

- **Montana Shared Catalog**
- **Montana Library Directory**

<http://mymontanalibrary.org>

[http://msl.mt.gov/For\\_Librarians/Library\\_Directory](http://msl.mt.gov/For_Librarians/Library_Directory)

## Montana State Digital Library

- **Library Information Services**
  - Archive Montana
  - Montana State Publications Online
  - Request or submit State Publications
  - Montana State Library catalog
  - Online Magazines & Journals
  - Research Databases
- **Natural Resource Information System**
  - Montana GIS Portal
  - Maps and Geographic Information
  - Montana Digital Atlas/Map Gallery
  - Water Information
- **Natural Heritage Program**
  - Montana Field Guide
  - Natural Heritage Tracker
  - Species of Concern Reports - Animals
  - Species of Concern Reports - Plants
  - Map Viewer

<http://archive.msl.mt.gov>

<http://statepublications.mt.gov>

[http://msl.mt.gov/for\\_state\\_employees/State\\_Publications](http://msl.mt.gov/for_state_employees/State_Publications)

<http://msl.mt.gov/msc>

[http://msl.mt.gov/for\\_state\\_employees/journals.asp](http://msl.mt.gov/for_state_employees/journals.asp)

[http://msl.mt.gov/For\\_State\\_Employees/Find\\_Resources\\_Online/](http://msl.mt.gov/For_State_Employees/Find_Resources_Online/)

<http://nris.mt.gov>

<http://gisportal.mt.gov/>

<http://nris.mt.gov/gis>

<http://nris.mt.gov/interactive.html>

<http://nris.mt.gov/wis>

<http://mtnhp.org/>

<http://fieldguide.mt.gov/>

<http://mtnhp.org/Tracker>

<http://mtnhp.org/SpeciesOfConcern/?AorP=a>

<http://mtnhp.org/SpeciesOfConcern/?AorP=p>

<http://mtnhp.org/mapviewer/>

## Montana Talking Book Library

- On-line catalogs and services – WebOpac  
WebBraille

[http://msl.mt.gov/talking\\_book\\_library](http://msl.mt.gov/talking_book_library)

<http://www.klasweb.msl.mt.gov>

## Montana State Library In-House Partners

- **Montana Base Map Service Center**
- **Montana Fish, Wildlife & Parks**
- **Natural Resources Conservation Service**

<http://giscoordination.mt.gov/>

<http://fwp.mt.gov>

<http://www.mt.nrcs.usda.gov/>

## Legislative Snapshot

[http://msl.mt.gov/legislative\\_snapshot/](http://msl.mt.gov/legislative_snapshot/)