

Legislative Snapshot 2011



Includes information for the State of Montana,
Senate District 46, and House Districts 91 and 92.

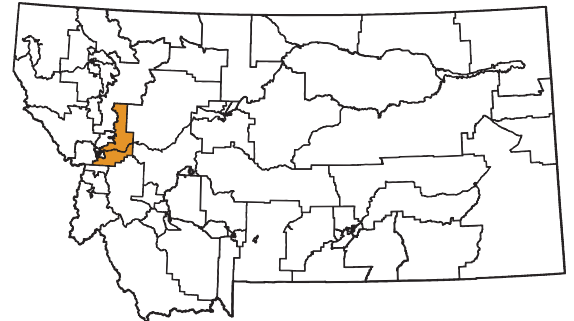
http://msl.mt.gov/legislative_snapshot/



Senate District 46

Senator Carol Williams (D)

3533 Lincoln Hills Point
Missoula, MT 59802-3381



House District 91

Representative Timothy Furey (D)

PO Box 56
Milltown, MT 59851-0056



House District 92

Representative Bryce Bennett (D)

1132 Vine Street
Missoula, MT 59802-4816



Letter from the Montana State Librarian

On behalf of the Montana State Library, I would like to welcome you to the 2011 legislative session. Our information experts have compiled this booklet to be a resource to you as you take on the important work of representing the collective needs of all Montanans and the special needs of your district during this legislative session.



As for past editions, we reviewed proposed bills and national and state trends related to what we believe will be major themes in this legislative session. To that end, you will find a wide range of information on our state's economy, energy production and development, and land and water use. Education is always an important issue, and you will find relevant information on our state's public schools and test scores, as well as on the libraries that help to augment what our schools do. While the drought seems to have subsided, our forests are now inundated by both blight and bark beetles, and you will be able to take a look at the most current information on maps available through the State Library. Finally, wildlife and recreation will always be an important part of Montana life, and we've pulled several highlights from our collection that might help to guide your decision-making this session.

The Montana State Library is a small and very unique agency. We employ not only librarians, but GIS and natural resource specialists and partner with botanists and zoologists, as well as federal and state agencies. We manage an enormous collection of state publications, as we simultaneously work to ensure that Montana's blind and physically disabled have access to reading materials and information.

We also work on behalf of all of Montana's libraries to help them provide the latest and best information and library services to their patrons – your constituents – whether it's downloadable books, public access computers, online resources, or just the latest bestseller. Without the Montana State Library leading the charge, Montana libraries would not be able to afford these resources and services for their patrons – all of which are being used in record numbers during these difficult economic times. In this age of information, most of which is only accessed online, the Montana State Library, through libraries across the state, provides a vital link that affects Montanans in a multitude of ways.

We created this book for you to not only to provide vital information to help you make difficult decisions in the coming months, but to demonstrate the power of what a diverse staff with amazingly diverse skills can do to make information in many different forms available to every Montanan. We are very proud of what we do here at the State Library as we work to empower Montanans by providing access to information, enhancing learning in families and communities, and building 21st Century skills.

We hope that you use this book throughout the session and stop by to see us – in person or virtually. Whether you visit us at our library or online, you will be able to browse our collection of government information, get help researching a specific issue, or find a quiet place to work or meet with colleagues. We are located one block east of the Capitol, behind the Montana Historical Society, at the north end of the Justice building. And of course, our services are available 24 hours a day, seven days a week at <http://msl.mt.gov>.

Sincerely,

A handwritten signature in black ink that reads "Darlene Staffeldt". The signature is written in a cursive, flowing style.

Darlene Staffeldt
Montana State Librarian

Senate District 46 House District 91 House District 92

Table of Contents

- 2 Recent Performance of the Montana Economy and its Industries
- 5 Recovery
- 6 Demographics
- 8 Education
- 9 Libraries
- 11 Land
- 12 Water
- 13 Environmental Impacts
- 14 Energy, Mines
- 15 Wildlife and Recreation

Appendices

- i Library Directory
- iv State of Montana Index

Senate District 46 County Indexes

- v Missoula County

Maps

- vi Legislative Districts
- viii Senate District 46

Recent Performance of the Montana Economy and Its Industries

Source: Montana Department of Labor, Research and Analysis Bureau

The Montana economy has undergone significant changes in the past two years as the national recession impacted the state. Leading up to the recession, Montana was experiencing faster employment growth, larger wage growth, and lower unemployment than the nation as a whole. Over the 1997-2007 time period, employment in Montana grew at a rate of 2.1% per year – far surpassing the national growth rate of 1.1% and Montana’s long-term average of 1.2% from 1976 to 2009.

Montana continued to outperform the nation during the recession with payroll employment losses of 5.8% compared to 6.1% nationally. In fact, Montana had only two quarters of negative personal income growth in 2008 and 2009 compared to four quarters nationally. Our industry mix, more responsible borrowing and lending practices, and the momentum of the economy preceding the downturn all contributed to our above-average performance. Montana’s unemployment rate also outperformed the national rate. Montana’s unemployment rate increased by 2.7 points from 3.5% in 2007 to 6.2% in 2009, compared to a 4.7 point increase nationally to 9.7% in 2009.

Despite Montana’s better performance, there were a significant number of Montana workers who lost their jobs during the recession, and even Montanans who retained their jobs have experienced slower wage growth. The average wage increased from 2008 to 2009 by only 1.3%



to \$33,760; wage growth in prior years ranged from three to four percent.

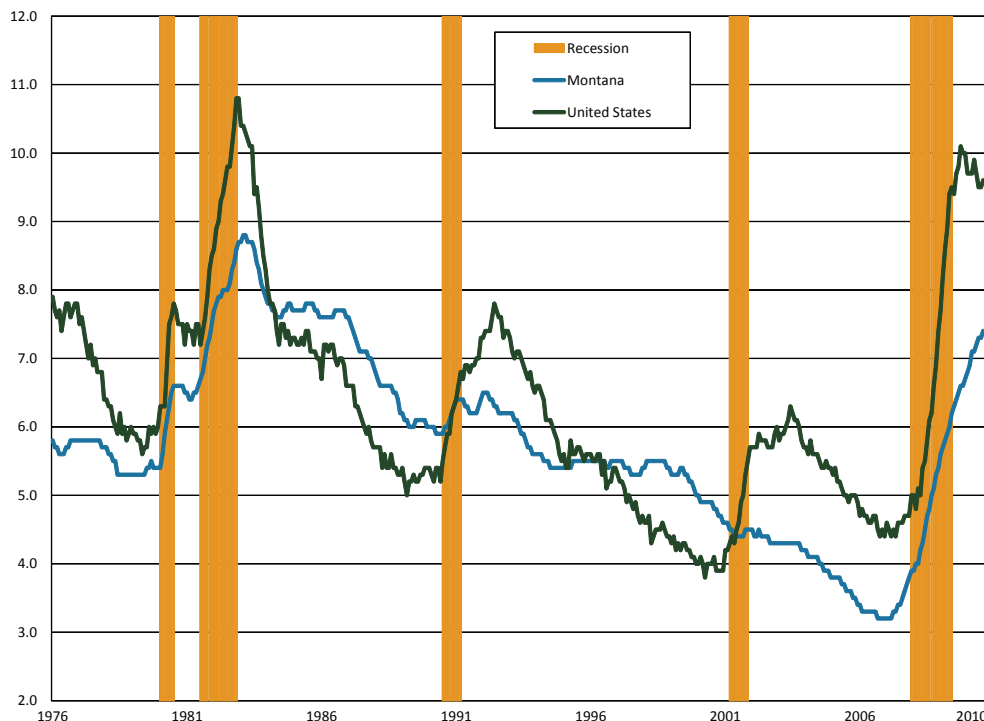
Although the recession is officially over and personal income growth has returned, job growth remains slow. Montana employment grew during the first half of 2010, but jobs were lost in the third quarter as government stimulus spending slowed. Some of this slow job growth is expected because strong labor productivity gains have reduced the demand for workers. Further, employment always lags an economic recovery. Figure 1 shows the U.S. and Montana unemployment rate since 1976 with

recessionary periods designated by the orange background. In recent recessions, the unemployment rate continued to increase after the recession officially ended.

There have been three industries that have continued to grow throughout the recession, helping to stabilize the Montana economy and providing job opportunities for dislocated workers from other industries – health care, public administration, and education. Public administration and education workers are predominantly hired by local, state, or federal governments, and benefited from government stimulus spending during the recession. Over 56% of government employment is hired at the local level, with 26% hired by the state. Government plays an important part of the Montana economy, comprising about 16% of GDP in 2008 and about 20% of employment during 2009. The industry also serves as a stabilizing, counter-cyclical force with slow growth in both economic prosperity and during downturns. Although government employment grew faster than private employment during this recession, private industry outpaced government hiring in the years leading up to the recession.

Health care was the fastest-growing industry during 2007-2009 with employment growth of 7.1% and a job gain of almost 4,100 workers from 2007 to 2009. Employment growth in health care has since slowed (see Figure 3). Health care related occupations, such as registered nurses, nurses’ aides, and home health care aides, are expected to continue to grow as the baby boom generation ages and demands more health care services. The growing health care occupations may provide employment opportunities for many workers who lost their jobs during the recession.

Figure 1. U.S./Montana Unemployment Rates and Recession



One way to examine the long-term impact of the recession on Montana's economy is to divide the industries into three categories based on their roles in the economy – base industries, consumer industries, and business-support industries. Base industries bring new money into Montana through exports and help drive growth in other industries through the increase in wealth. In Montana, these industries are generally natural resource based and include agriculture, mining, energy, manufacturing, and timber. According to the Montana Department of Commerce, the top exports from Montana are bulk wheat, inorganic chemicals, and industrial machinery. Table 2 lists these exports. In addition, federal government services can be thought of as a base industry in Montana because we receive more federal spending than what is paid by Montanans in federal taxes. Tourism can also be a base industry, although many of Montana's tourists come from within the state.

Table 2. Top 10 Exports from Montana Worldwide in Millions of U.S. Dollars

1	Bulk Wheat	447.40
2	Inorganic Chemicals	305.00
3	Industrial Machinery	156.00
4	Mineral Fuel, Oil, etc.	66.00
5	Ores, Slag, Ash	65.30
6	Vehicles, Parts, and Accessory Items	58.40
7	Organic Chemicals	57.70
8	Salt, Sulfur, Earth, and Stone	42.30
9	Paper & Paperboard	33.00
10	Miscellaneous Chemical Products	29.20

Source: Montana Department of Commerce Census and Economic Information Center

During 2008, the agriculture, mining, and energy sectors benefited from high commodity prices and were able to bring wealth into the state to support the state's economy during the first year of the downturn. Commodity prices decreased to long-term trends during 2009, however, leading to a 13% job loss in the mining industry from 2007-2009. Mining employment is relatively small, however, and the mining job loss was less than 1,000 workers. With stronger commodity prices in 2010, mining employment has regained many of their lost jobs. Figure 3 tracks employment levels in mining and other industries during the recession.

However, other base industries in Montana were more severely harmed by the recession. In particular, Montana manufacturers faced plant closures and job losses of over 3,000 jobs (14.8%) from 2001-2009 because of low worldwide demand for their products. Because many manufacturing processes are energy intensive, high energy prices harmed the manufacturing industry even while helping Montana's energy production industries. Over 53% of the manu-

facturing losses occurred in the wood products manufacturing industry and were related to the national downturn in the housing market. The wood products industry lost approximately 1,600 jobs in the past two years. Because the national housing market is expected to recover slowly, and because plant closures and mass layoffs have left holes in the supply chain for many manufacturers, the recession is likely to have long-term impacts on the logging and manufacturing industries in Montana.

The new wealth brought into Montana by base industries drives economic growth in consumer-based industries. Consumer-based industries are industries where growth depends on an increase in population or income, such as construction, retail, health care, or entertainment. As large employers, consumer-based industries play a large role in our economy. However, these industries tend to pay lower wages because of a predominance of lower-skilled jobs. Consumer-based industries made up 61% of Montana's employment, but paid only 52% of wages in the second quarter of 2010.

With the large loss of jobs in manufacturing, wood products, and in other base industries, Montanans had less money to spend in consumer-based industries, resulting in further job losses. The construction industry was the worst hit industry with over 8,300 lost jobs from 2007 to 2009 – a decline of 24.2%, with job losses continuing in 2010. Construction jobs represent over 55% of the total number of jobs lost during the recession. The retail industry faced losses of over 3,700 jobs, but the percentage of jobs lost is smaller at 5.0% due to the large size of the industry.

Finally, the third industry category is business support industries, which require a nexus of economic activity to prosper. Business support industries, such as transportation and warehousing, wholesale, professional services, and administrative support services, depend on the growth of other industries. As the recession affected other industries in the state, the business support industries experienced a slow and steady decline in jobs. Losses in these industries are not as severe as the losses in construction, manufacturing, and retail, ranging from two to four percent of the 2007 employment. Business support services will need other industries to have stronger growth before regaining employment. In the long-term, continuing either amenity-driven population growth or economic growth will allow business support industries to prosper.

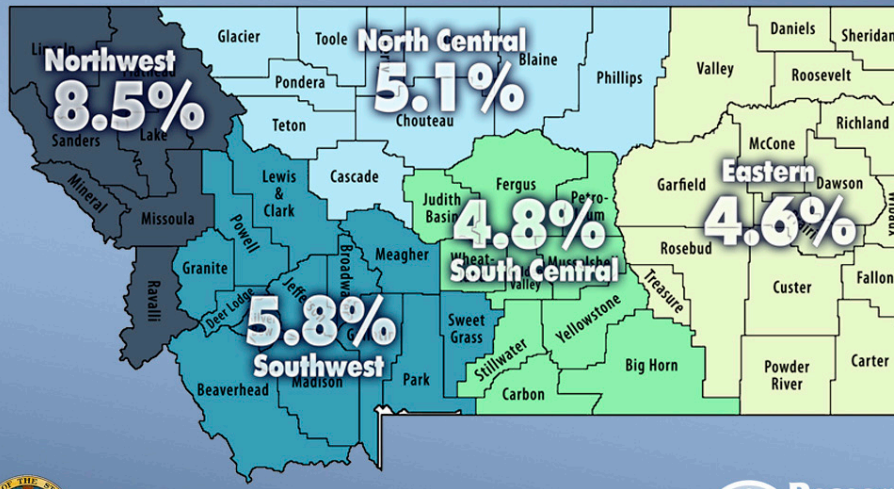
In summary, the Montana economy remains fairly reliant on traditional natural resource-based industries to bring in new money into the state. Many of these base industries will join the nation in economic recovery, but the recession's impacts on the wood products industry and on some manufacturers may be long-lasting. The performance of these base industries will drive growth in the consumer-based and service industries. Consumer-based industries were the fastest growing industries prior to the recession, and employ the majority of the state's workforce. As job and wage growth resumes as a part of economic recovery, consumer-based industries should prosper. Finally, the business support industries depend on a nexus of population and industry. All of these industries are interconnected and rely on each other for success.

Figure 3. Employment in Selected Montana Industries during the Recession





2009 Annual Unemployment Rates by Region



Montana
Department of Labor and Industry



Figure 4

Montana's Regions

The Northwestern portion of Montana felt the impact of the recession most acutely, largely because the region had a large concentration of construction, wood products, and manufacturing workers. All of these industries had large employment losses during the recession. The 2009 average unemployment rate for this region was 8.5%, as shown in Figure 4. In comparison, all other regions had unemployment rates of less than 6%.

In contrast, the Eastern portion of Montana has higher concentrations of employment in utilities and public administration than does the Western portion of the state, with a nearly average concentration in health care. The growth of these industries supported the Eastern Montana economy during the recession. In addition, the Eastern region was not as heavily reliant on the declining industries of construction, retail, and manufacturing as were other parts of the state. Further, the agriculture and mining industries posted relatively strong performances during 2008 due to high commodity prices, although these industries retracted when commodity prices declined.

Despite larger job losses in the Western portion of Montana, the Northwest and Southwest regions still have more jobs than other parts of the state. The more vibrant economies of Western Montana will likely regain their status as economic drivers of our state as the economy recovers from the recession.

Challenges to the Montana Economy

Reducing Unemployment

Although the recession is officially over, the Montana economy continues to face challenges as it exits the recession. The first and foremost of these challenges is to reduce unemployment by adding more jobs and ensuring that our workforce has the skills to fill the new jobs. Although our overall job growth depends on the economic performance of the U.S. and global economy, out-of-work Montanans can prepare themselves for opportunities when job growth resumes. Many industries, particularly construction and retail, have lost so many jobs that it will be difficult for workers to find jobs in their old occupation. For example, the Montana economy is expected to add over 100 new carpenter jobs per year as the economy recovers, but about 2,000 carpenters lost their jobs in the last two years, still leaving many of these workers without a job. These workers need to be retrained for jobs that have continued to grow throughout the recession, like those in the health care industry, in order to shorten their period of unemployment.

Aging Workforce

A longer-term challenge for the Montana economy is our aging workforce. According to the U.S. Census Bureau's population projections, the percentage of the Montana population that will be over the age of 65 is expected to reach 25% by 2030, making Montana one of the oldest states in the nation. The aging of our population will likely have obvious impacts on our economy, such as increased demand for health care, greater demand for the arts, and changes in state spending for both education and Medicare. The aging of the Montana population will likely drive changes in Montana's education system as well. There will be fewer young people graduating from Montana high schools and more non-traditional students in the Montana University System.

The aging of the population will also cause significant tightening of Montana's labor force. The U.S. Census Bureau's population projections indicate that the working age population in Montana (ages 18-65) will start to decrease starting in 2014, leaving businesses with fewer candidates for job openings. The recession has reduced the urgency posed by the changing demographics of Montana's workforce because of higher unemployment and because the loss of wealth during the recession has caused many workers to delay retirement. However, as our economy recovers, Montana's older workers will be leaving the workforce. Businesses need to plan for the loss of the knowledge and experience held by these workers and for the potential of a tight labor market in the future.



Percent Change in Property Values Due to Reappraisal

	Residential	Commercial	Agricultural	Forest Land	Total
Montana	1.76	2.46	-4.66	-6.72	5.19
Missoula County	1.00	0.80	-4.39	-15.08	1.27

Source: Montana Department of Revenue

Federal ARRA Funds Awarded to Federal Agencies for Projects in Montana

Federal agency recovery awards granted in Montana as reported by recipients.

	Awards	Total Funds Awarded	Funds Per Capita	Funds Received	Local Amount	Jobs Reported
Corps of Engineers	83	31,119,433	32	12,052,085	23,750,292	125.58
Department of Agriculture	522	228,999,873	235	45,362,231	228,648,750	569.87
Department of Commerce	10	24,710,932	25	3,197,892	28,687,567	6.71
Department of Defense (except military departments)	3	940,714	1	891,041	940,714	
Department of Education	641	254,783,938	261	142,782,232	254,566,583	1,681.61
Department of Energy	137	98,884,317	101	25,668,316	125,125,460	209.27
Department of Health and Human Services	270	99,411,947	102	39,551,704	101,083,953	336.32
Department of Homeland Security	27	46,927,021	48	9,923,330	47,688,814	82.01
Department of Housing and Urban Development	50	40,575,921	42	26,026,787	40,575,921	278.39
Department of Justice	106	46,648,742	48	11,105,801	47,835,290	125.01
Department of Labor	60	20,950,269	21	13,009,832	18,718,090	95.82
Department of the Air Force	79	46,081,356	47	19,849,329	43,993,659	55.94
Department of the Army	1	2,527,200	3	2,137,556	2,527,200	11
Department of the Interior	211	121,136,937	124	72,050,481	121,150,873	641.28
Department of the Treasury	2	2,600,000	3	2,600,000	2,600,000	
Department of Transportation	164	292,750,431	300	206,123,442	290,768,051	965.16
Department of Veterans Affairs	12	4,647,311	5	528,439	4,647,311	6.02
Environmental Protection Agency	134	50,383,953	52	38,756,242	50,333,953	76.01
Executive Office of the President	1	13,574	0	13,574	13,574	
General Services Administration	47	66,616,969	68	5,491,124	54,870,279	31.46
National Aeronautics and Space Administration	3	99,784	0	99,784	218,958	0.44
National Foundation on the Arts and the Humanities	5	416,000	0	382,430	416,000	6.63
National Science Foundation	40	21,113,454	22	4,328,693	21,100,349	42.66
Other Independent Agencies	6	1,171,481	1	1,137,555	1,171,481	39.41
Unassigned	3	0	0	0	705,779	
Total	2,617	1,503,511,558	1,542	683,069,899	1,512,138,901	5,386.60

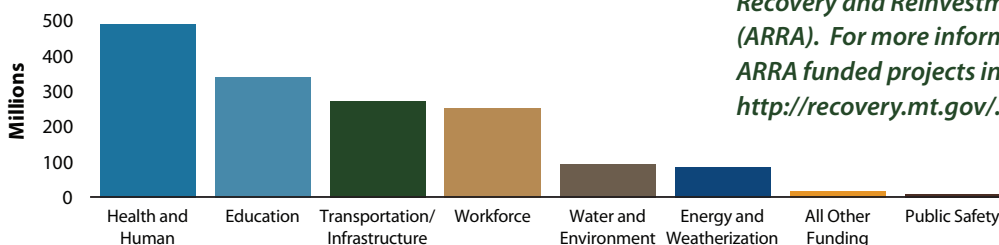
Source: Recovery.gov, November 2010

Broadband Technology Opportunity Program

Under the Broadband Technologies Opportunity Program (BTOP) and in partnership with the Bill & Melinda Gates Foundation, the Montana State Library will partner with 42 of Montana's public libraries to expand access to free, high-speed internet to 86% of the state's population by 2013. Though most local libraries have computers with internet access, many do not have enough computers, fast enough broadband speeds, or ADA-accessible computer facilities to provide adequate services for the thousands of Montanans who need it. As a result, library patrons currently have long wait times of up to two hours for computers, as well as unacceptably slow browsing speeds that inhibit library patrons' ability to apply for social services, find jobs, or complete research.

<http://www.msl.mt.gov/btop/>

Montana Reinvestment Act Project Categories



Source: <http://recovery.mt.gov/>, December 2010



2009 Montana ARRA Funds Awarded

County	Amount
Beaverhead	15,160,291
Big Horn	26,179,900
Blaine	11,507,677
Broadwater	4,472,857
Butte Silver Bow	49,695,135
Carbon	8,354,553
Carter	11,359,144
Cascade	78,805,111
Chouteau	3,243,647
Custer	10,868,688
Daniels	1,539,206
Dawson	9,272,730
Deer Lodge	9,141,378
Fallon	9,656,539
Fergus	14,960,424
Flathead	117,634,647
Gallatin	137,761,188
Garfield	726,212
Glacier	28,838,902
Golden Valley	715,716
Granite	3,382,894
Hill	20,518,576
Jefferson	25,233,220
Judith Basin	1,761,204
Lake	42,073,433
Lewis & Clark	72,455,559
Liberty	1,792,032
Lincoln	23,183,008
Madison	6,386,980
McCone	2,253,416
Meagher	7,682,950
Mineral	8,395,247
Missoula	141,742,279
Musselshell	3,633,199
Park	15,500,397
Petroleum	432,552
Phillips	12,798,377
Pondera	7,460,172
Powder River	1,243,929
Powell	16,419,596
Prairie	1,300,842
Ravalli	41,595,559
Richland	5,167,813
Roosevelt	24,451,178
Rosebud	15,271,410
Sanders	15,697,306
Sheridan	4,821,528
Stillwater	9,221,276
Sweet Grass	4,612,903
Teton	9,018,958
Toole	6,468,309
Treasure	460,621
Valley	5,686,257
Wheatland	1,636,591
Wibaux	1,871,705
Yellowstone	133,317,560
Pass through to states	16,188,675
Statewide	331,827,343
Unallocated	18,219,767

Source: www.recovery.mt.gov, November 2010

Demographics

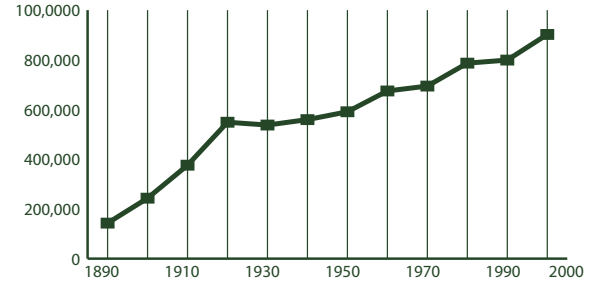
2008 Poverty and Median Income Estimates

Montana ranked 42nd among all U.S. states for median income in 2008.

	Median Household Income	% in Poverty All Ages	% in Poverty Ages < 18
United States	52,029	13.2	18.2
Montana	43,948	14.1	19.2
Missoula County	43,260	17.0	17.5

Source: U.S. Census Bureau, Small Area Estimates Branch

Montana Historic Population Growth 1890 - 2000 Censes



Source: U.S. Census Bureau Population

Population Growth in Montana and Selected Counties

Montana's population density is about 6.5 persons per square mile.

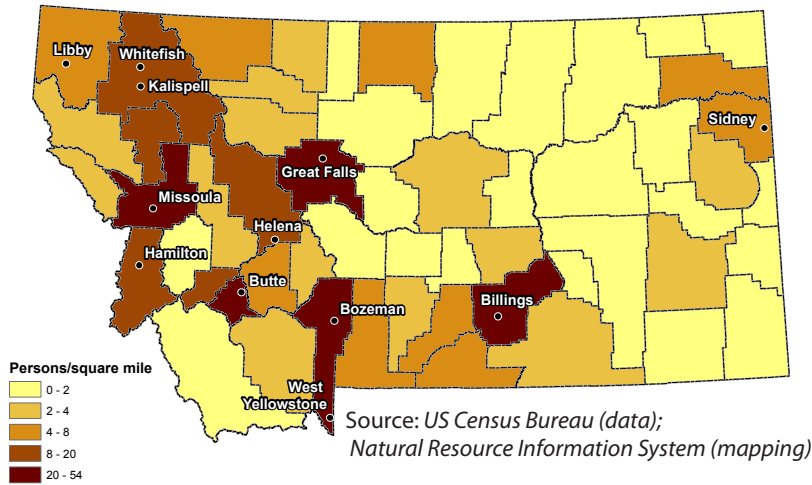
	2000 Census	2009 Estimate	Percent Growth
United States	281,421,906	307,006,550	.09
Montana	902,195	957,861	.08
Missoula County	95,802	108,623	13.38

Source: U.S. Census Bureau

Look for preliminary 2010 Census data available from the US Census Bureau beginning in February, 2011 <http://2010.census.gov/>



2008 Population Density Estimates - Total Persons



2009 Population Estimates

	Montana
Male	487,981
Under 5 years	31,949
Under 18 years	112,780
18 to 64 years	310,778
65 years and over	64,423
Female	487,008
Under 5 years	30,489
Under 18 years	107,048
18 to 64 years	302,480
65 years and over	77,480
Total	974,989

Source: US Census Bureau, Population Estimates Program

Housing Units for Selected Counties

According to the U.S. Census Bureau, the total number of housing units in Montana increased 6.9% during this period.

	2000	2001	2002	2003	2004	2005	2006	2007	2008	2009	% Change
Missoula County	41,319	42,031	42,509	43,563	44,437	44,944	45,492	45,909	46,461	46,781	13.22

Source: U.S. Census Bureau, Population Estimates

Demographics

Corrections - Inmate Population

	2004	2005	2006	2007	2008	2009
Male Prison Beds	2,005	2,180	2,252	2,258	2,170	2,245
Montana State Prison - Deer Lodge	1,325	1,430	1,458	1,463	1,391	1,416
Great Falls Regional Prison	149	151	151	147	143	150
Dawson County Regional Prison - Glendive	140	141	142	142	141	143
Crossroads Correctional Center - Shelby	391	458	501	506	495	536
Actual population_male	2,005	2,180	2,252	2,258	2,170	2,245
Female Prison Beds	171	192	233	209	165	185
Montana Women's Prison - Billings	164	186	218	191	148	168
Intensive Challenge Program - MWP - Billings	7	6	15	18	17	17
Actual population_female	171	192	233	209	165	185

Source: Montana Department of Corrections, May 2010

Employment Status of Montana Women

In 2009, the Interagency Committee for Change by Women (ICCW) conducted a survey of women in the workforce. For more information visit <http://www.mdt.mt.gov/iccw/surveys/wwork.shtml>.

	1978	2009
Total Employed	45.30	94.7
Full-Time	30.50	84
Part-Time	14.80	10.6
Total Not Employed	54.60	5
Non-working	39.80	4.6
Retired	12.50	0.6
Disabled	2.3	0.1

Source: 2009 Survey of Women and Work

Montana Sexual or Violent Offender Registry Number of Convictions by Offense

Arson	94
Assault (including Aggravated Assault)	1,727
Dangerous Drugs	82
Family Offense	619
Homicide	138
Incest With A Minor	116
Kidnapping	76
Other	101
Robbery	536
Sex Offense	187
Sexual Assault	2,333
Total	6,004

Source: Department of Justice, Montana Sexual or Violent Offender Registry, September 2010

Veteran Population Projections

Montana is ranked second among the states for percent of the civilian population 18 years and over who are veterans. (13.9 percent, 2006-2008 American Community Survey)

	2000	2010	2020	2030
Montana	108,330	102,015	89,052	76,230
Missoula County	10,204	9,800	9,156	8,268

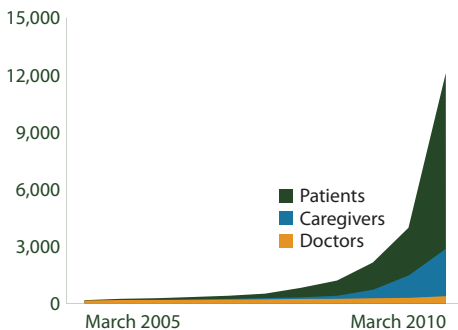
Source: United States Department of Veteran Affairs, October 2007

Montana Children and Social Services

	Children's Population 2008	Percent of Children in Poverty 2008	Free/Reduced Price Lunch Eligibles 2008/09	Daycare Program Participants* 2007	Special Education Program Enrollment 2008/09	Healthy Montana Kids Enrollment 2009	Medicaid Enrollment 2009
Montana	220,358	21.0	51,333	8,051	17,636	17,465	46,463
Missoula County	22,622	17.5	4,721	1,391	1,764	1,432	4,676

Source: MontanaKidsCount, <http://montanakidscount.org/> *facilities participating in state program

Montana Medical Marijuana Use Program



Source: Montana Medical Marijuana Program, June 2010

Temporary Assistance For Needy Families (TANF) Comparison

	2005 Cases	2005 Case Avg	2009 Cases	2009 Case Avg	Apr 2010 Cases	Apr 2010 Case Avg
Montana	4,820	356	3,466	392	3,784	426
Missoula County	350	336	243	354	292	399

Source: Montana Department of Public Health and Human Services, April 2010

Education

Schools in Senate District 46

There are 832 public K-12 and 14 private accredited schools in Montana. Montana also has 15 public, 6 private, and 7 tribal colleges. Senate and House district figures in the table below show the number of schools located in cities within 10 miles of the district's boundaries.

	Montana	Senate District 46	House District 91	House District 92
High Schools	173	49	49	44
Middle Schools	213	121	116	116
Elementaries	446	207	202	202
Total	832	377	367	362

Source: Office of Public Instruction, September 2010

Montana School Size and Enrollment 2009 - 2010

School Size	Percent of Schools	Enrollment	Percent of Enrollment
>500	6	42,927	30
250 to 499	19	56,027	40
100 to 249	19	26,444	19
50 to 99	14	8,563	6
<50	41	7,846	6
Total	100	141,807	100

Source: OPI Facts About Montana Education, September 2010

School Districts - Number of in Area

	Senate District 46	House District 91	House District 92
Elementary	14	9	2
Secondary	5	3	2
Unified	1	1	1
Total	20	13	5

Source: Montana Base Map Service Center, November 2009

Montana Dropout Rate - Percent of Total Enrollment

Grade / Gender	2004-05	2005-06	2006-07	2007-08	2008-09	5-yr Average
7 & 8 Total	0.2%	0.2%	0.3%	0.3%	0.3%	0.2%
Male	0.2%	0.2%	0.3%	0.3%	0.4%	0.3%
Female	0.1%	0.2%	0.3%	0.3%	0.2%	0.2%
HS Total	3.3%	3.6%	3.7%	5.2%	5.1%	4.2%
Male	3.6%	3.9%	4.2%	5.5%	5.6%	4.5%
Female	3.1%	3.3%	3.2%	4.8%	4.6%	3.8%
Overall Total	2.3%	2.5%	2.7%	3.6%	3.6%	2.9%
Male	2.5%	2.7%	3.0%	3.9%	3.9%	3.2%
Female	2.1%	2.3%	2.3%	3.4%	3.2%	2.6%

Source: Montana Statewide Graduate and Dropout Report, 2008 - 2009 School Year

2009 Youth Risk Behavior Survey - Percentage of Respondents

		1995	1997	1999	2001	2003	2005	2007	2009
Drove when drinking alcohol during the past 30 days	U.S.	15.4	16.9	13.1	13.3	12.1	9.9	10.5	9.7
	Montana	27.4	26.7	22.7	21.8	20.4	18.5	16.0	13.5
Rode with a driver who had been drinking alcohol during the past 30 days	U.S.	38.8	36.6	33.1	30.7	30.2	28.5	29.1	28.3
	Montana	48.1	46.6	43.1	39.3	36.9	34.4	32.9	28.8
Carried a weapon (gun, knife, or club) during the past 30 days	U.S.	20.0	18.3	17.3	17.4	17.1	18.5	18.0	17.5
	Montana	22.6	23.8	20.3	21.4	19.4	21.4	22.1	23.0
Current cigarette use (smoked cigarettes during the past 30 days)	U.S.	34.8	36.4	34.8	28.5	21.9	23.0	20.0	19.5
	Montana	34.8	38.1	35.0	28.5	22.9	20.1	20.0	18.7
Current alcohol use (drank alcohol during the past 30 days)	U.S.	51.6	50.8	50.0	47.1	44.9	43.3	44.7	41.8
	Montana	58.2	59.0	57.6	54.1	49.5	48.6	46.5	42.8
Binge drinking (5 or more drinks within a couple hours during the past 30 days)	U.S.	32.6	33.4	31.5	29.9	28.3	25.5	26.0	24.2
	Montana	43.1	44.4	43.6	41.4	37.3	34.4	32.7	30.1
Current marijuana use (used marijuana during the past 30 days)	U.S.	25.3	26.2	26.7	23.9	22.4	20.2	19.7	20.8
	Montana	20.1	26.9	25.5	27.1	23.1	22.3	21.0	23.1
Ever had sexual intercourse	U.S.	53.1	48.4	49.9	45.6	46.7	46.8	47.8	46.0
	Montana	47.0	45.9	42.5	43.9	43.6	43.6	45.7	47.6
Attempted suicide during the past 12 months	U.S.	8.7	7.7	8.3	8.8	8.5	8.4	6.9	6.3
	Montana	8.5	8.4	6.7	10.4	9.7	10.3	7.9	7.7

Source: U.S. Census Bureau

National Assessment of Education (NAEP) Progress Historical Performance in Montana Schools

Subject	Grade	Year	State Average	National Average	
Mathematics (scale: 0-500)	4	1996 ⁿ	228	222	
		2003	236	234	
		2005	241	237	
	8	2007	244	239	
		2009	244	239	
		1990 ⁿ	280	262	
		1996 ⁿ	283	271	
		2003	286	276	
		2005	286	278	
Reading (scale: 0-500)	4	1994 ⁿ	222	212	
		1998	225	213	
		2003	223	216	
	8	2005	225	217	
		2007	227	220	
		2009	225	220	
		1998	271	261	
		2003	270	261	
		2005	269	260	
Science (scale: 0-300)	4	2000	160	145	
		2005	160	149	
		1996 ⁿ	162	148	
	8	2000	164	148	
		2005	162	147	
		2007	162	147	
	Writing (scale: 0-300)	4	2002	149	153
			1998	150	148
		8	2002	152	152
2007			157	154	

ⁿ Accommodations were not permitted for this assessment

Source: National Center for Education Statistics



Libraries

There are 761 libraries in Montana. Senate and House district figures in the table below show the number of libraries located in cities within 10 miles of the district's boundaries. For more detailed information on Montana's libraries visit http://www.msl.mt.gov/For_Librarians/Library_Directory/.

Source: *Montana State Library, November 2010*

	Montana	Senate District 46	House District 91	House District 92
Public	81	2	1	1
Branches	31	2	0	2
Bookmobiles	3	0	0	0
School	562	72	35	37
Academic	28	6	3	3
Special or Other	56	6	3	3
Total	761	88	42	46

Montana Talking Book Library

Services for Blind or Disabled Montanans

- In 2009-2010, our 5 employees and 100 volunteers provided FREE specialized library services, via mail or download, by circulating 259,382 books and materials to 4,173 blind or disabled Montana veterans and residents of all ages. Since 2009, we served an additional 1,097 more patrons - a 28% increase.
- Our patrons benefit from a variety of access options: the newest easy-to-use, accessible digital book program; free digital talking book machines delivered to patrons' homes; free eLibrary with 20,000 books to download; 63,000 additional book titles and 80 periodicals for loan in one or more formats; access to radio or phone newspaper services.
- Our Montana Recording Program has produced over 1,000 Montana books for all ages.
- Our Montana Braille /Twin Vision Program has produced over 442 books for Montana children.
- Special funding from the 2009 Legislature successfully provided patrons of MONTANA AUDIO Information Network (formerly Montana Radio Reading Service) and Montana Association for the Blind with improved access and expanded newspaper resources.



For more information:

<http://msl.mt.gov/tbl/> OR 1-800-332-3400

Senate and House district figures in the table below show the number of patrons located in cities within 10 miles of the district's boundaries.

	Montana	Senate District 46	House District 91	House District 92
Total Patrons	4,173	464	455	452
Veterans Who Are Patrons	409	39	39	37
Patron Count by Disability				
Blindness	1,212	167	164	166
Low Vision	2,129	235	230	228
Physical	350	28	27	26
Reading	482	34	34	32

Source: *Montana Talking Book Library*

Montana Public Libraries Fast Facts

- Montana's public libraries hold 3,348,859 items.
- Montanans visited their public libraries an average of five times throughout the year, for a total of 4,429,464 visits in 2009.
- Montana library patrons checked out 6,244,116 items in 2009, about seven items per person.
- Librarians in Montana's public libraries fielded 428,844 reference questions in SFY 2009, or 8,247 questions per week.
- 100% of all Montana libraries provide Internet access to patrons
- Nearly half of all Montanans (442,311) have a library card.

Montana Shared Catalog Statistics

The Montana Shared Catalog helps Montana libraries meet today's library users demands. It gives Montanans a rich and easy-to-use catalog including more than 3.3 million items which patrons circulated 4,178,877 times in SFY 2010. Additional groups that partner to share their catalogs include the 4 Rivers, BridgerNet, and Partners groups. Senate and House district figures below show the number of libraries located in cities within 10 miles of the district's boundaries.



Havre-Hill County library director, Bonnie Williamson, using the Montana Shared Catalog system to check out a book to a patron.

Montana Shared Catalog Senate District 46 Public and Branch Libraries

Missoula Public Library, *Missoula*
Seeley Lake Branch Library, *Seeley Lake*
Swan Valley Community Library, *Condon*

	Montana	Senate District 46	House District 91	House District 92
Participating Libraries	132	9	7	9
Patrons	364,554	75,246	73,960	75,246
Items	3,325,517	343,811	302,893	343,811
Partner Group Libraries	28	9	3	9

Statewide Library Training

The Montana State Library's consultants travel throughout Montana and meet one-on-one with librarians and library trustees across the state, assisting with everything from training and technology to applying Montana library law and fundraising basics. In the last fiscal year, MSL's consultants traveled over 60,000 miles, made over 2,000 contacts and completed over 400 visits with Montana's library community.

Total Attendees	1,321
Number of Workshops	113
Number of different Montana locations	63

Time period: January 2009 - December 2010

Source: *Montana State Library*



Statewide Library Resources

The Montana State Library works on behalf of all Montana libraries to help them provide the latest and best information and library services to their patrons – your constituents. We negotiate on behalf of libraries across the state to get the best rate on cutting-edge library products and services, on which many Montanans depend for everything from making health care decisions to finding a job. Examples include our statewide contract with OCLC, a worldwide consortium of libraries dedicated to providing top-notch library services and a subscription to the genealogy database, HeritageQuest which is available to all public libraries in the state. Without statewide library projects, some of which are listed here, many Montanans would be left behind in this age of information.

Statewide Databases

Thanks to an allocation from the Montana legislature, the Montana State Library offers statewide databases to all Montana library patrons. Access to this completely online collection – accessible in the library, at home, or on a mobile device – includes hundreds of databases and thousands of full text articles on everything from business resources to health information.

Ready 2 Read

The Montana State Library's Ready 2 Read program is designed to help parents and caregivers understand the value of sharing language and literacy with their children and the importance these skills play throughout a person's life. So far, 45 libraries have received extensive early childhood training and a large number of materials to serve Montana's youngest library patrons; additionally these 45 libraries now offer programming just for children ages 0 – 3.

<http://ready2readmontana.org/>



Courier Pilot Project

As access to quality information has become a vital part of our lives, the Montana State Library is working on a number of ways for libraries to share information and materials affordably and dependably. One of these methods is the Montana Courier Project, which uses a commercial courier service to ship library materials and resources around the state. As the pilot participation has grown, participating libraries are seeing increasingly significant savings in the cost of moving library materials around the state.

Participating Libraries

Senate and House district figures in the table below show the number of libraries located in cities within 10 miles of the district's boundaries.

	Montana	Senate District 46	House District 91	House District 92
Statewide Databases	762	47	42	46
OCLC	250	11	11	11
Courier Project	34	0	0	0
MontanaLibrary2Go	48	1	1	1
HeritageQuest	86	1	1	1
Montana Memory Project	15	1	1	1

Source: Montana State Library

Montana's Cultural Heritage

In partnership with the Montana Historical Society and other partners, the Montana State Library helps to ensure that Montanans have ready access to our Montana cultural heritage. The Montana Memory Project provides online access to digitized copies of historic as well as contemporary material that serve as a resource for education, business, pleasure, and lifelong learning.

<http://mtmemory.org/>



First train from St. Paul, over the last spike enroute to Portland, OR. September 8, 1883
Montana Historical Society Photo Archives
Montana Memory Project

Additionally, the Montana State Library launched the online companion to the Montana Historical Society's *Montana Place Names: From Alzada to Zortman*. This web mapping application makes discoverable the history of more than 1,200 Montana place names and includes all the photos and descriptions found in the book.

<http://mtplacenames.org/>

State Publications Available Online!

The Montana State Library is digitizing our legacy print state publications collection of 55,000 publications dating to 1874. To date, nearly one million pages have been digitized. All of these publications are available online in a variety of formats at <http://statepublications.mt.gov>. Use of these items is 250 times more frequent than traditional print.

Montana Library 2 Go

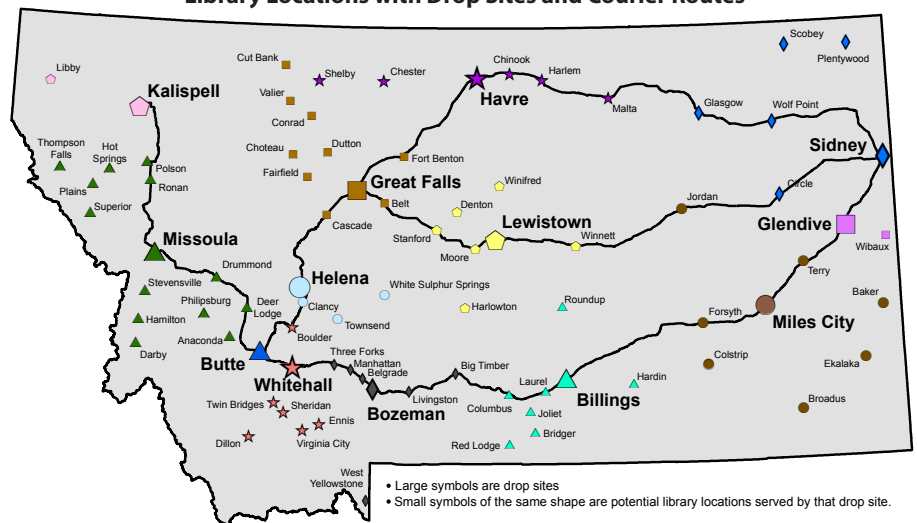
Montana library patrons are reading more books on mobile devices than ever before and Montana libraries are delivering the goods with Montana Library 2 Go, a collection of downloadable audio and E-book titles to patrons of participating libraries. Titles are available for download on MP3 players, iPods, iPads and other playing and reading devices.

GIS Portal

Funded by the 2007 Legislature and first launched in 2008, the Montana GIS Portal serves as Montana's primary online resource to discover geospatial data. The Portal provides online access to hundreds of datasets in a variety of formats for use in maps, web mapping applications and geospatial analyses.

<http://gisportal.msl.mt.gov/>

Montana Library Courier/Delivery Service Pilot Library Locations with Drop Sites and Courier Routes



Source: Montana State Library, December 2010

Land

Land Ownership

Senate District 46 ranks number 27 in size and is 1,224.000 square miles, or about 1% of Montana's total land area (146,923.321 square miles). The average senate district in Montana is 2,938 square miles and the average house district is 1,469 square miles.

Owner	Montana		Senate District 46		House District 91		House District 92	
	Area (Sq Mi)	%	Area (Sq Mi)	%	Area (Sq Mi)	%	Area (Sq Mi)	%
Private	95,738	65	720	59	327	72	393	51
Local Government	32	< 1	3	< 1	< 1	< 1	3	< 1
Montana Fish, Wildlife and Parks	470	< 1	20	2	< 1	< 1	19	2
State Trust Land	8,020	5	83	7	44	10	39	5
Other State Land	89	< 1	0	0	0	0	0	0
US Bureau of Land Management	12,451	8	31	3	13	3	17	2
US Fish and Wildlife Service	1,373	< 1	0	0	0	0	0	0
US Forest Service	26,317	18	365	30	67	15	297	39
US National Park Service	1,829	1	0	0	0	0	0	0
Other Federal Land	318	< 1	0	0	0	0	0	0
Total	146,923		1,224		454		770	

Source: Montana Natural Heritage Program, July 2010

Private Land Agricultural Use

Owner	Montana		Senate District 46		House District 91		House District 92	
	Acres	%	Acres	%	Acres	%	Acres	%
Continuous Crop	25,468	< 1	1	< 1	1	< 1	0	0
Fallow Crop	13,281,791	16	52	< 1	52	< 1	0	0
Farmstead	0	0	0	0	0	0	0	0
Grazing	49,048,154	59	64,853	12	36,587	15	28,266	10
Irrigated	5,220,163	6	10,318	2	8,024	3	2,295	< 1
Timber	14,168,777	17	444,400	85	201,866	82	242,535	89
Wild Hay	1,097,282	1	606	< 1	477	< 1	129	< 1
Total	82,841,635		520,231		247,007		273,224	

Source: Montana Department of Administration Information Technology Services Division - Geographic Information Services, October 2010

Conservation Easements (Acres)

	Montana	Senate District 46	House District 91	House District 92
Bitter Root Land Trust	2,422	0	0	0
City Government	601	0	0	0
Clark Fork- Pend Oreille Conservancy	151	0	0	0
County Government	528	0	0	0
Ducks Unlimited (Wetlands America Trust)	16,979	0	0	0
Five Valleys Land Trust	37,763	3,188	2,197	991
Flathead Land Trust	8,054	10	0	10
Gallatin Valley Land Trust	36,149	0	0	0
Montana Department of Transportation	938	0	0	0
Montana Fish, Wildlife, and Parks	384,984	5,268	932	4,337
Montana Land Reliance	831,566	5,526	1,926	3,601
National Wildlife Federation	20	0	0	0
Prickly Pear Land Trust	3,246	0	0	0
Rattlesnake Land Trust	190	142	0	142
Rocky Mountain Elk Foundation	49,220	3,119	3,119	0
Salish and Kootenai Tribe	102	0	0	0
The Bighorn Institute	1,443	0	0	0
The Nature Conservancy	309,443	6,385	5,736	649
The Vital Ground Foundation	833	674	0	674
US Bureau of Reclamation	42	0	0	0
US Department of Agriculture	17,652	0	0	0
US Fish and Wildlife Service	232,456	0	0	0
US Forest Service	20,038	156	0	156
Total	1,955,555	24,469	13,909	10,560

Source: Montana Natural Heritage Program

Montana Spatial Data Infrastructure

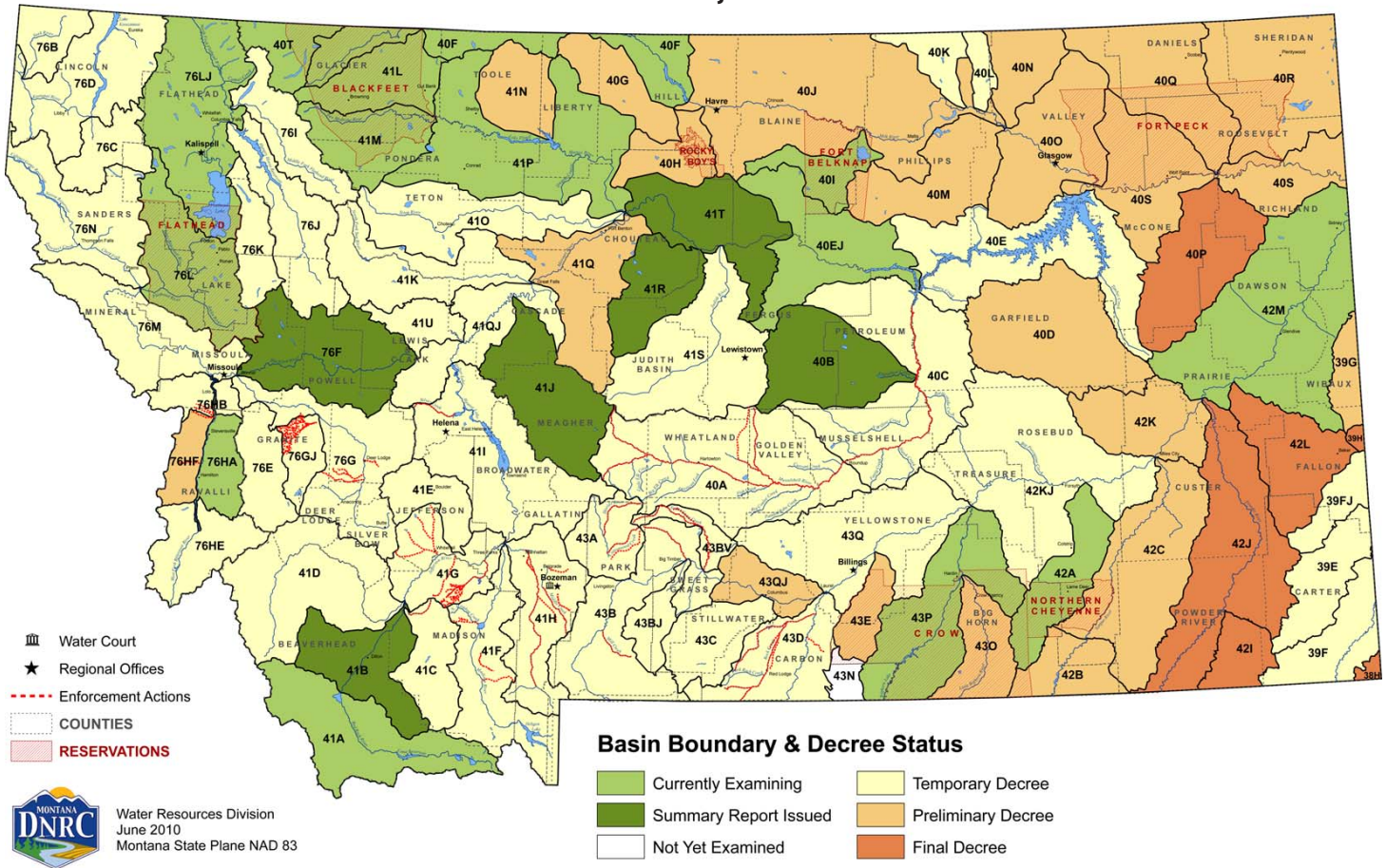
The Montana Spatial Data Infrastructure (MSDI) is a digital representation of Montana's physical and cultural landscape that allows the state to be mapped. Some of the individual components of the MSDI are roads, lakes and streams, land ownership, administrative boundaries, soils, land use, structures, aerial photographs, watersheds, wetlands, elevation, and geology.

This information is fast becoming a critical element for policy review at the state and local levels in both the public and private sectors. For more information see: <http://giscoordination.mt.gov/>.



The Department of Natural Resources and Conservation maintains a database of water rights to assist Montana citizens and the Montana Water Court in the water rights adjudication process. Visit their site at http://dnrc.mt.gov/wrd/water_rts/.

Basin Location and Adjudication Status



Dams in Senate District 46

There are 3,666 dams in the national inventory of dams for Montana. Predominant uses are stock/farm ponds (48%) and irrigation (22%). Additional dams not included in the inventory can be found by searching for water rights.

Source: *National Inventory of Dams, USGS Geographic Names Information System, September 2003*

Type	Montana	Senate District 46	House District 91	House District 92
Debris Control	1	0	0	0
Fish and Wildlife Pond	1	0	0	0
Flood Control	43	0	0	0
Hydroelectric	26	1	1	0
Irrigation	822	6	4	2
Recreation	54	1	0	1
Stock/Small Farm Pond	1,771	1	1	0
Tailings	8	0	0	0
Water Supply	44	0	0	0
Other	68	0	0	0
Unknown	828	0	0	0
Total	3,666	9	6	3

Public Water Supplies

There are 3,266 public water supplies located in the State of Montana, 113 of which are located in Senate District 46. These figures do not include public water supplies serving Native American nations.

	Count
House District 91	
Public, community	38
Public, non-community, non-transient	8
Public, transient	29
House District 92	
Public, community	2
Public, non-community, non-transient	4
Public, transient	32

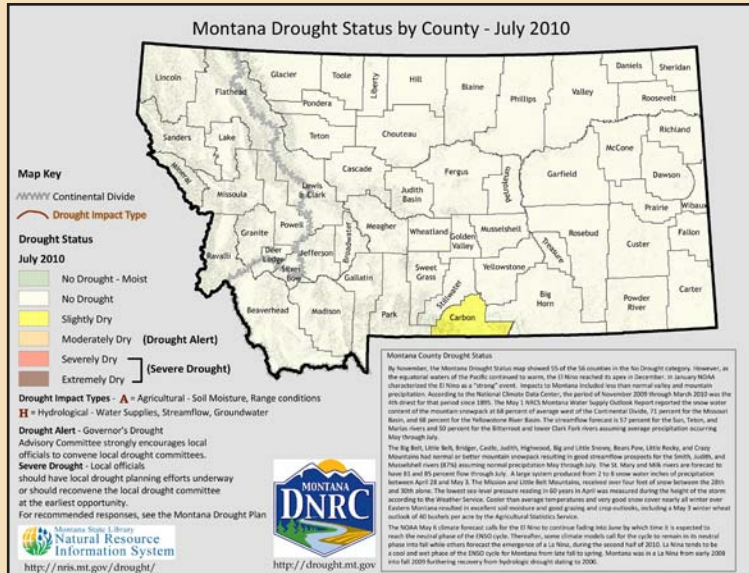
Source: *Department of Environmental Quality, December 2007*



Montana Drought Resources

The Montana Governor's Drought Advisory Committee is charged with monitoring, forecasting, and reporting water supply and moisture conditions, enabling Montanans to make timely and informed decisions to mitigate drought impacts in a proactive manner.

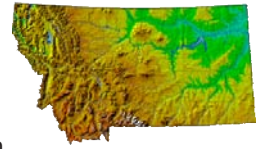
For up-to-date information and maps on Montana's current drought situation visit <http://drought.mt.gov/>.



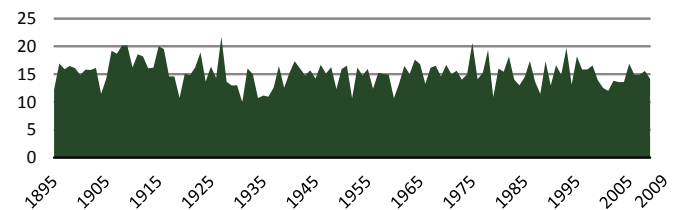
Source: Natural Resource Information System

Montana Digital Atlas

Additional mapping and data capabilities are available through the Montana State Library at <http://nris.mt.gov/>. The Montana Digital Atlas provides unlimited access to detailed information on such issues as climate, environmental impacts, land information, water, and cultural data.



Montana Annual Precipitation in Inches (1895 - 2009)



Source: NOAA Satellite and Information Service

Montana Fires 2002 - 2008

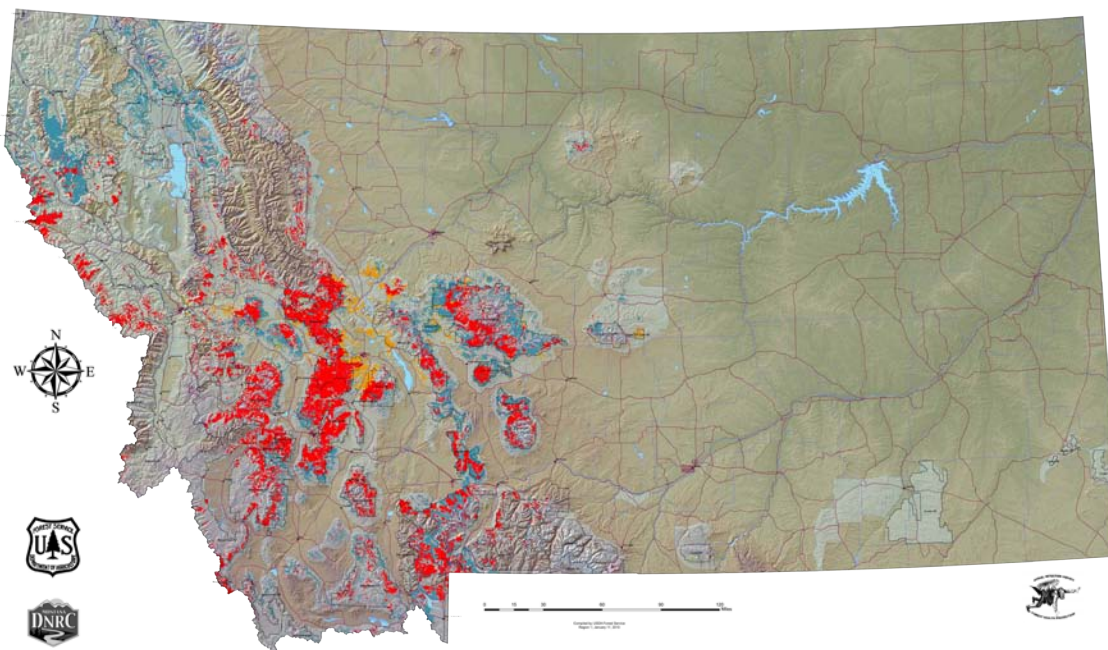
All Fires As Reported by All Agencies

Year	Count	Acreage
2002	1,372	110,309
2003	2,326	736,809
2004	1,447	18,445
2005	1,316	103,294
2006	2,302	1,047,118
2007	1,875	778,079
2008	1,424	166,842

Source: Department of Natural Resources and Conservation

2009 Aerial Detection Survey Data - Insect and Disease Outbreaks in Montana

As Detected by Forest Health Protection's (FHP) Aerial Insect and Disease Detection Survey - USDA Forest Service.



- National Forest
- County Boundary
- Areas Surveyed
- Pest**
- Douglas Fir Beetle
- Subalpine Fir Mortality
- Mountain Pine Beetle in High Elevation 5-Needle Pines
- Western Spruce Budworm
- Mountain Pine Beetle in Ponderosa Pine
- Mountain Pine Beetle in Lodge Pole Pine
- Fir Engriaver

****Disclaimer****

The sources of the digital map layer used to compile the base map upon which the insect and disease data are presented vary in both source and scale, therefore, accuracy is not guaranteed.

The insect and disease data should be used only as an indicator of insect and disease activity, and should be ground-truthed for actual location and causal agent. Polygons indicate locations of tree mortality, defoliation, and/or other damage. Intensity of damage is variable, and not all trees and areas indicated are dead or damaged. The joint cooperators reserve the right to correct, modify, update, or replace the data as necessary. Using this data for purposes other than those for which it was intended may yield inaccurate or misleading results.

Oil and Gas Wells in Senate District 46

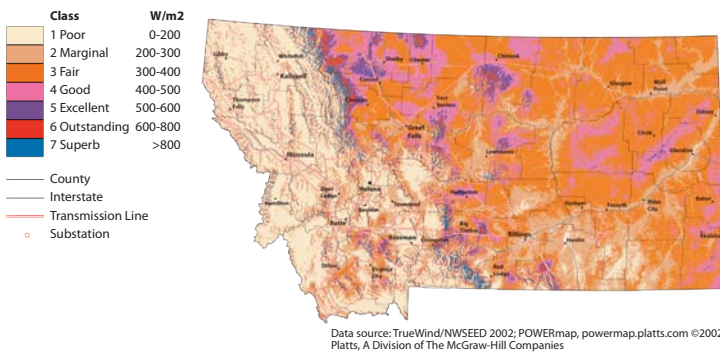
	Montana	Senate District 46	House District 91	House District 92
Coal Bed Methane, Active	1,117	0	0	0
Coal Bed Methane, Inactive	40	0	0	0
Gas, Active	7,351	0	0	0
Gas, Inactive	2,509	0	0	0
Gas Storage, Active	272	0	0	0
Gas Storage, Inactive	14	0	0	0
Injection, Active	1,109	0	0	0
Injection, Inactive	749	0	0	0
Oil, Active	7,230	0	0	0
Oil, Inactive	4,511	0	0	0
Total	24,902	0	0	0

Source: Montana Board of Oil and Gas Conservation, October 2008

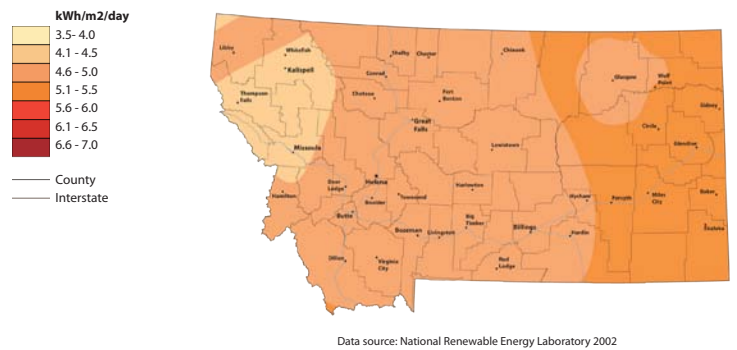
Additional information about oil and gas wells is available through the Board of Oil and Gas Conservation's WebMapper which can be accessed at <http://bogc.dnrc.mt.gov/>.

Energy Atlas

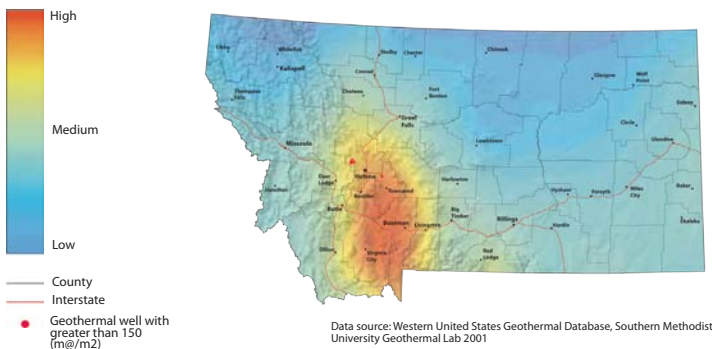
Wind Power at 50 Meters - Wind Power Density



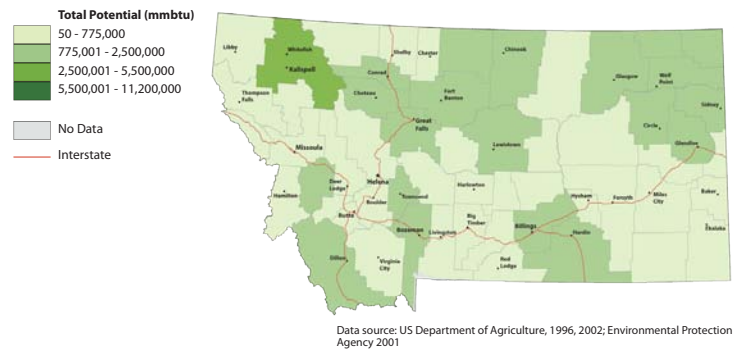
Solar Insolation Annual Average



Geothermal Potential



Total Energy Potential from Biomass Residue



Find additional energy related data and maps at <http://www.energyatlas.org/>

Pipelines in Senate District 46

	Montana		Senate District 46		House District 91		House District 92	
	Count	Miles	Count	Miles	Count	Miles	Count	Miles
Crude Oil	90	1,970	0	0	0	0	0	0
Natural Gas	360	3,301	14	57	13	56	1	2
Refined Product	47	805	2	27	1	24	1	3
Other	24	402	0	0	0	0	0	0
Total	521	6,477	16	84	14	79	2	5

Source: Pipeline Integrity Management Mapping Application, December 2006

Abandoned Mines and Remediation Sites

	Abandoned Mines	Remediation Sites
Montana	6,954	765
Senate District 46	37	11
House District 91	35	6
House District 92	2	5

Source: Montana Department of Environmental Quality, November 2010

Montana House Heating Fuel

	Occupied housing units	
Utility gas	373,455	100%
Bottled, tank, or LP gas	215,172	57.6%
Electricity	49,291	13.2%
Fuel oil, kerosene, etc.	66,504	17.8%
Fuel oil, kerosene, etc.	7,126	1.9%
Coal or coke	841	0.2%
Wood	29,473	7.9%
Solar energy	235	0.1%
Other fuel	4,064	1.1%
No fuel used	749	0.2%

Source: 2006-2008 American Community Survey 3-Year Estimates

Wildlife and Recreation

Species Diversity in Senate District 46

	Montana (Count)	Senate District 46 (Count)	% of Montana Species
Amphibians	13	7	54
Birds	328	265	81
Fish	81	20	25
Mammals	107	73	68
Reptiles	17	9	53

Source: Montana Natural Heritage Program

Recreation Area (Acres)

	Senate District 46
Fishing Access Sites	497
Fishing Conservation Areas	2,691
State Parks	142
Wildlife Conservation Easements	0
Wildlife Protection Areas	0
Wildlife Management Areas	44,264
Total	44,903

Source: Montana Fish, Wildlife, and Parks

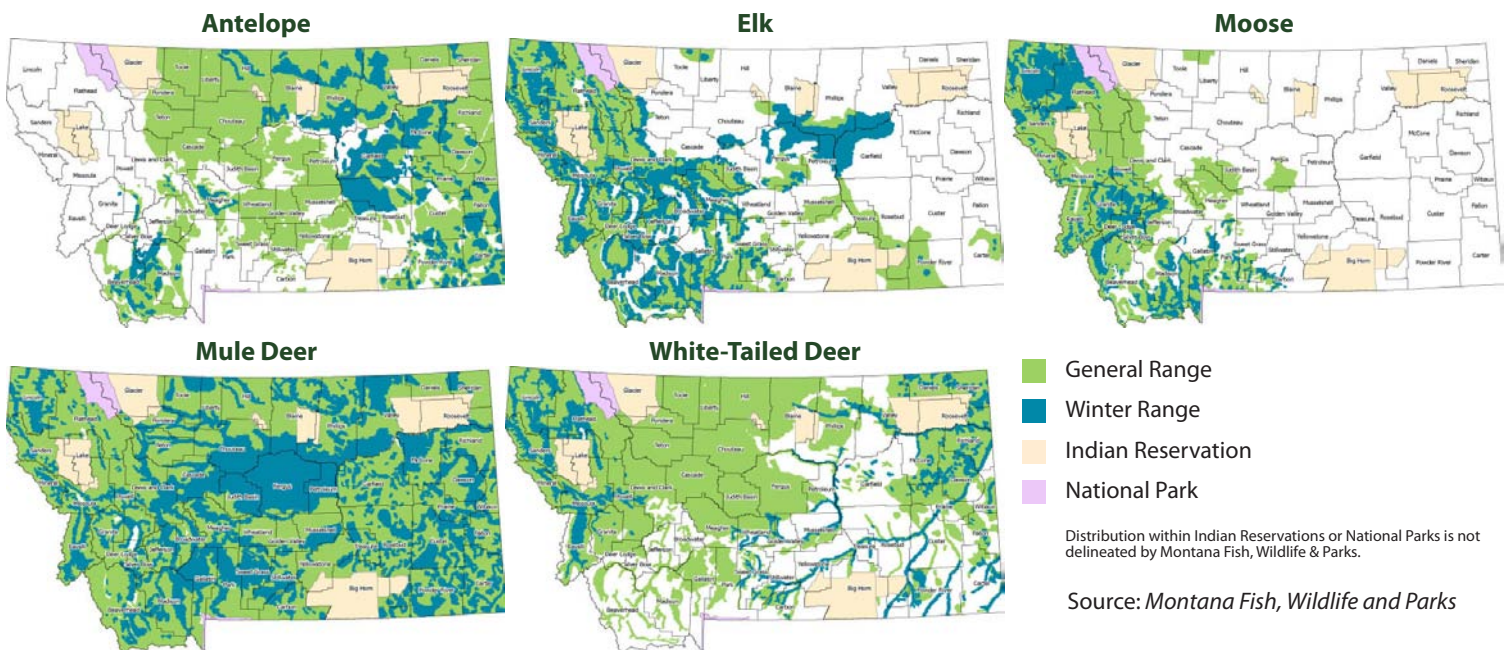
Block Management Acreage

There are a total of 7,522,358 acres of Block Management land (excluding Plum Creek*) in the State of Montana. 37,789.00 of those acres or 1% are located in Senate District 46.

*Plum Creek land in FWP's Regions 1 and 2 are not included in these statistics. Although they are part of the Block Management Program, they are not traditional BMA's and are managed differently.

Source: Montana Fish, Wildlife and Parks

Big Game Distribution



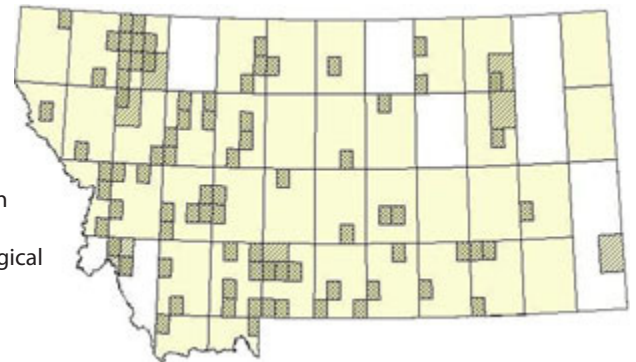
Gray-crowned Rosy-Finch

Leucosticte tephrocotis



The Gray-crowned Rosy-Finch nests in cliff crevices and talus slopes among glaciers and snowfields above timberline in western Montana. During winter individuals migrate to lower elevations across Montana.

Leucosticte tephrocotis General Observations Range



Source: Montana Natural Heritage Program

Montana is blessed with a wealth of wildlife and habitat diversity. These resources provide exceptional opportunities for recreation and contribute substantially to the state's economy and quality of life.

Wildlife Highlights

For more information on animals, plants, and habitats in your Senate District, visit the Montana Natural Heritage Program at <http://mtnhp.org>. Resources include:

- Montana Field Guide - an encyclopedia of the distribution, status, and biology of Montana's animals, plants, and biological communities
- Natural Heritage Tracker and Map Viewer - interactive maps of animals, plants, land cover, and land stewardship
- Land Stewardship Maps - public lands, conservation easements, and special designations
- Wetland and riparian mapping information
- Reports on Montana's Species of Concern
- Quick responses to data requests and answers from expert scientists on Montana's plants, animals, and biological communities.

Senate District 46 Libraries and Digital Library Resources

Public

Frenchtown School & Community Library

Steve White, School Librarian
Missoula County
PO Box 117 Frenchtown, MT 59834
(406) 626-2730
Web Site: <http://www.frenchtown.k12.mt.us>
Catalog: <http://mtscprod.msl.mt.gov/uhtbin/cgisirsi/x/0/0/49>
Montana Shared Catalog, OCLC, Statewide Databases



Missoula Public Library

Honore Bray, Library Director
Missoula County
301 E Main Missoula, MT 59802
(406) 721-2665
Web Site: <http://www.missoulapubliclibrary.org>
Catalog: <http://mtscprod.msl.mt.gov/uhtbin/cgisirsi/x/0/0/49>
Montana Shared Catalog, Partners Group, OCLC, MyMontanaLibrary2Go, HeritageQuest, Statewide Databases

Seeley Lake Branch Library

Sue Stone, Library Clerk
Missoula County
PO Box 416 Seeley Lake, MT 59868
(406) 677-2224
Catalog: <http://mtscprod.msl.mt.gov/uhtbin/cgisirsi/x/0/0/49>
Montana Shared Catalog, Partners Group, OCLC, Statewide Databases



Swan Valley Community Library

Fern Kauffman, Branch Librarian
Missoula County
PO Box 1128 Condon, MT 59826
(406) 754-2521
Catalog: <http://mtscprod.msl.mt.gov/uhtbin/cgisirsi/x/0/0/49>
Montana Shared Catalog, Partners Group, OCLC, Statewide Databases

Academic

Mansfield Library at the College of Technology

Steven Atkin, Library Director
Missoula County
909 South Avenue West Missoula, MT 59801
(406) 243-7820
Web Site: <http://www.lib.umt.edu>
Catalog: <http://libcat.lib.umt.edu>
University of Montana Consortium, OCLC, Statewide Databases



Maureen and Mike Mansfield Library

Bonnie Allen, Dean of Libraries
Missoula County
32 Campus Drive #9936 Missoula, MT 59812
(406) 243-6800
Web Site: <http://www.lib.umt.edu>
Catalog: <http://libcat.lib.umt.edu>
University of Montana Consortium, OCLC, Montana Memory Project Participant, Statewide Databases

William J. Jameson Law Library

Fritz Snyder, Library Director
Missoula County
6th & Maurice Missoula, MT 59812
(406) 243-2699
Web Site: <http://www.umt.edu/law/library>
Catalog: <http://libcat.lib.umt.edu>
University of Montana Consortium, OCLC, Statewide Databases

School

Big Sky High School

Christine Fogerty, School Library Media Specialist
Missoula County
3100 South Ave W Missoula, MT 59804
(406) 728-2401
Web Site: <http://www.mcps.k12.mt.us/portal/big-sky/Library/tabid/1703/Default.aspx>
Catalog: <http://lib.mcps.k12.mt.us/uhtbin/cgisirsi.exe/x/0/0/57/49>
Montana Shared Catalog, OCLC, Statewide Databases

Bonner Public School

Brianna Huffman, Librarian
Missoula County
PO Box 1004 Bonner, MT 59823
(406) 258-6151
Web Site: <http://www.bonner.k12.mt.us/library>
OCLC, Statewide Databases

Chief Charlo Elementary School

Mary Greil, School Librarian
Missoula County
5600 Longview Missoula, MT 59803
(406) 542-4005
Web Site: <http://www.teacherweb.com/MT/Chief-Charlo/Library/>
Catalog: <http://lib.mcps.k12.mt.us/uhtbin/cgisirsi.exe/x/0/0/57/49>
Missoula Schools, OCLC, Statewide Databases

Clinton Elementary School

Marilyn Yvonne Richie, School Librarian
Missoula County
PO Box 250 Clinton, MT 59825
(406) 825-3113
Catalog: <http://mtscprod.msl.mt.gov/uhtbin/cgisirsi/x/0/0/49>
Montana Shared Catalog, OCLC, Statewide Databases

Cold Springs Elementary School

Elaine Williams, School Principal
Missoula County
2625 Briggs St Missoula, MT 59803
(406) 542-4010
Web Site: <http://www.mcps.k12.mt.us/portal/cold-springs/Library/tabid/1901/Default.aspx>
Catalog: <http://lib.mcps.k12.mt.us/uhtbin/cgisirsi.exe/x/0/0/57/49>
Missoula Schools, OCLC, Statewide Databases

Desmet Elementary School

Rose Woodford, School Librarian
Missoula County
6355 Padre Lane Missoula, MT 59802
(406) 549-4994
OCLC, Statewide Databases

Franklin Elementary School

Nancy Peterson, School Librarian
Missoula County
1901 S 10th W Missoula, MT 59801
(406) 542-4020
Web Site: <http://www.mcps.k12.mt.us/portal/franklin/Library/tabid/1407/Default.aspx>
Catalog: <http://lib.mcps.k12.mt.us/uhtbin/cgisirsi.exe/x/0/0/57/49>
Missoula Schools, OCLC, Statewide Databases

Frenchtown K-8 Library

Niki Evans, School Librarian
Missoula County
PO Box 117 Frenchtown, MT 59834
(406) 626-2620
Web Site: <http://www.frenchtown.k12.mt.us/>
OCLC, Statewide Databases

Hawthorne Elementary School

Michele Nokleby, Media Specialist
Missoula County
2835 S 3rd W Missoula, MT 59804
(406) 542-4025
Web Site: <http://www.mcps.k12.mt.us/portal/hawthorne/Library/tabid/1900/Default.aspx>
Catalog: <http://lib.mcps.k12.mt.us/uhtbin/cgisirsi.exe/x/0/0/57/49>
Missoula Schools, OCLC, Statewide Databases

Hellgate Elementary School K-2

Linda Watts, School Librarian
Missoula County
2385 Flynn Lane Missoula, MT 59808
(406) 721-2160
Web Site: <http://www.hellgate.k12.mt.us/>
Catalog: <http://mtscprod.msl.mt.gov/uhtbin/cgisirsi/x/0/0/49>
Montana Shared Catalog, OCLC, Statewide Databases

Hellgate High School

Peggy Cordell, School Librarian
Missoula County
900 S. Higgins Ave Missoula, MT 59801
(406) 728-2400
Web Site: <http://www.mcps.k12.mt.us/portal/hhs/Departments/LibraryMediaCenter/tabid/1189/Default.aspx>
Catalog: <http://lib.mcps.k12.mt.us/uhtbin/cgisirsi.exe/x/0/0/57/49>
Missoula Schools, OCLC, Statewide Databases

Hellgate Intermediate School 3-5

Ellen Marshall, School Librarian
Missoula County
2385 Flynn Lane Missoula, MT 59808
(406) 549-6109
Web Site: <http://www.hellgate.k12.mt.us/>
Catalog: <http://mtscprod.msl.mt.gov/uhtbin/cgiisirs/x/0/0/49>
Montana Shared Catalog, OCLC, Statewide Databases

Hellgate Middle School 6-8

Becky Mosbacher, School Librarian
Missoula County
2385 Flynn Lane Missoula, MT 59808
(406) 721-2452
Web Site: <http://www.hellgate.k12.mt.us/>
Catalog: <http://mtscprod.msl.mt.gov/uhtbin/cgiisirs/x/0/0/49>
Montana Shared Catalog, OCLC, Statewide Databases

Lewis and Clark Elementary School

Erin Lipkind, School Librarian
Missoula County
2901 Park St Missoula, MT 59801
(406) 542-4035
Web Site: <http://www.mcps.k12.mt.us/portal/Lewis/Library/tabid/1896/Default.aspx>
Catalog: <http://lib.mcps.k12.mt.us/uhtbin/cgiisirs.exe/x/0/0/57/49>
Missoula Schools, OCLC, Statewide Databases

Lolo School Library

Jodi Teeple, Librarian
Missoula County
11395 Highway 93 South Lolo, MT 59847
(406) 273-6686
Web Site: <http://www.lolo.k12.mt.us>
OCLC, Statewide Databases

Lowell School Library

Andrea Phillip, School Librarian
Missoula County
Missoula, MT 59802
(406) 728-2400
Web Site: <http://www.mcps.k12.mt.us/portal/lowell/Library/tabid/2077/Default.aspx>
Catalog: <http://lib.mcps.k12.mt.us/uhtbin/cgiisirs.exe/x/0/0/57/49>
Missoula Schools, OCLC, Statewide Databases

Loyola Sacred Heart H. S.

Patrice Schwenk, Librarian
Missoula County
320 Edith Missoula, MT 59801
(406) 549-6101
Web Site: <http://www.Montana.com/loyola/loyola.html>
OCLC, Statewide Databases

Meadow Hill Middle School

Brenda Gillhouse, School Librarian
Missoula County
4210 S. Reserve St Missoula, MT 59803
(406) 542-4045
Web Site: <http://www.mcps.k12.mt.us/portal/meadowhill/Library/tabid/2020/Default.aspx>
Catalog: <http://lib.mcps.k12.mt.us/uhtbin/cgiisirs.exe/x/0/0/57/49>
Missoula Schools, OCLC, Statewide Databases

Missoula County Public Schools

Matt Clausen, Technical Coordinator
Missoula County
215 S 6th St W Missoula, MT 59801
(406) 728-2400
Web Site: <http://www.mcps.k12.mt.us/portal/Staff/Libraries/tabid/292/Default.aspx>
Catalog: <http://lib.mcps.k12.mt.us/uhtbin/cgiisirs.exe/x/0/0/57/49>
Missoula Schools, OCLC, Statewide Databases

Missoula International School

Laura Bovard, School Librarian
Missoula County
1100 Harrison Ave Missoula, MT 59802
(406) 542-9924
Web Site: <http://www.mismt.org>
Catalog: <http://mtscprod.msl.mt.gov/uhtbin/cgiisirs/x/0/0/49>
Montana Shared Catalog, OCLC, Statewide Databases

Montana Digital Academy

Jason Neiffer, Curriculum Director
Missoula County
32 Campus Drive Missoula, MT 59812
(406) 543-4619
Web Site: <http://www.montanadigitalacademy.org>
Statewide Databases

Mount Jumbo Elementary School

Patti Ragen Schwisow, School Librarian
Missoula County
735 Michigan Ave Missoula, MT 59802
(406) 542-4050
Web Site: <http://www.mcps.k12.mt.us/>
Missoula Schools, Statewide Databases

Paxson Elementary School

Carole Monlux, School Librarian
Missoula County
101 Evans Missoula, MT 59801
(406) 728-2400
Web Site: <http://www.mcps.k12.mt.us/portal/paxson/Library/tabid/1897/Default.aspx>
Catalog: <http://lib.mcps.k12.mt.us/uhtbin/cgiisirs.exe/x/0/0/57/49>
Missoula Schools, OCLC, Statewide Databases

Porter Middle School

Laraine Lundgren, School Library Media Specialist
Missoula County
2510 W Central Ave Missoula, MT 59801
(406) 728-2400
Web Site: <http://www.mcps.k12.mt.us/portal/porter/Library/tabid/1687/Default.aspx>
Catalog: <http://lib.mcps.k12.mt.us/uhtbin/cgiisirs.exe/x/0/0/57/49>
Missoula Schools, OCLC, Statewide Databases

Potomac Elementary School

Roland Dierken, School Librarian
Missoula County
29750 Potomac Rd Bonner, MT 59823
(406) 244-5008
OCLC, Statewide Databases

Rattlesnake Elementary School

Patti Schwisow, School Librarian
Missoula County
1220 Pineview Dr Missoula, MT 59802
(406) 542-4050
Web Site: <http://www.mcps.k12.mt.us/portal/rattlesnake/Library/tabid/1898/Default.aspx>
Catalog: <http://lib.mcps.k12.mt.us/uhtbin/cgiisirs.exe/x/0/0/57/49>
Missoula Schools, OCLC, Statewide Databases

Russell Elementary School

Patricia Marne, School Librarian
Missoula County
3216 Russell Street Missoula, MT 59801
(406) 542-4080
Web Site: <http://www.mcps.k12.mt.us/portal/russell/Library/tabid/1899/Default.aspx>
Catalog: <http://lib.mcps.k12.mt.us/uhtbin/cgiisirs.exe/x/0/0/57/49>
Missoula Schools, OCLC, Statewide Databases

Seeley Lake Elementary School

Kristin Johnson, School Librarian
Missoula County
PO Box 840 Seeley Lake, MT 59868
(406) 677-2265
Catalog: http://216.14.225.15/public/OCLC_StatewideDatabases

Seeley-Swan High School

Katrina Stout, School Library Media Specialist
Missoula County
PO Box 416 Seeley Lake, MT 59868
(406) 677-3255
Web Site: <http://www.mcps.k12.mt.us/portal/seeleyswan/Library/tabid/1380/Default.aspx>
Catalog: <http://lib.mcps.k12.mt.us/uhtbin/cgiisirs.exe/x/0/0/57/49>
Missoula Schools, OCLC, Statewide Databases

Sentinel High School

Jillian Crerar, Media Specialist
Missoula County
901 South Ave W Missoula, MT 59801
(406) 728-2400
Web Site: <http://www.mcps.k12.mt.us/sentinel/library/>
Catalog: <http://lib.mcps.k12.mt.us/uhtbin/cgiisirs.exe/x/0/0/57/49>
Missoula Schools, OCLC, Statewide Databases

St Joseph School Library

Patrice Schwenk, Media Specialist
Missoula County
503 Edith Street Missoula, MT 59801
(406) 549-1290
Web Site: <http://www.Montana.com/stje/index.html>
OCLC, Statewide Databases

Sunset Elementary Library

Darlene Troutwine, School Clerk
Missoula County
PO Box 344 Greenough, MT 59836
(406) 244-5916
OCLC, Statewide Databases

Swan Valley Elementary School Library

Shirley Webb, Library Staff Member
Missoula County
6423 Mt Highway 83 Condon, MT 59826
(406) 754-2471
OCLC, Statewide Databases

Target Range Public Schools Library

Jean Langlas, School Librarian
Missoula County
4095 S Ave W Missoula, MT 59804
(406) 549-9239
Web Site: <http://target.k12.mt.us>
OCLC, Statewide Databases

Valley Christian High School Library

Marsha Snyder, School Librarian
Missoula County
2526 Sunset Lane Missoula, MT 59801
(406) 549-0482
OCLC, Statewide Databases

Washington Middle School Library

Gretchen Murray, School Library Media Specialist
Missoula County
645 W Central Ave Missoula, MT 59801
(406) 542-4085
Web Site: <http://www.mcps.k12.mt.us/washington/Library.htm>
Catalog: <http://lib.mcps.k12.mt.us/uhtbin/cgiisirs.exe/x/0/0/57/49>
Missoula Schools, OCLC, Statewide Databases

Willard Alternative High School Library

Junell Lawrence, School Library Media Specialist
Missoula County
901 South 6th Street West Missoula, MT 59801
(406) 728-2400
Web Site: <http://www.mcps.k12.mt.us/portal/willard/Library/tabid/814/Default.aspx>
Catalog: <http://lib.mcps.k12.mt.us/uhtbin/cgi-sirsi.exe/x/0/0/57/49>
OCLC, Statewide Databases

Woodman Elementary School Library

Michelle Morgan, School Librarian
Missoula County
18470 Highway 12 West Lolo, MT 59847
(406) 273-6777
OCLC, Statewide Databases

Special

Community Medical Center

Education Resources

Pamela Olsen, Manager, Education Resources
Missoula County
2827 Fort Missoula Road Missoula, MT 59804
(406) 327-4038
Statewide Databases

Learning Center @ St. Patrick Hospital

Dana Kopp, Library Director
Missoula County
PO Box 4587 Missoula, MT 59806
(406) 329-5710
Web Site: <http://chi.saintpatrick.org>
Catalog: <http://catalog.lib.umt.edu/vwebv/searchBasic>
University of Montana Consortium, OCLC, Statewide Databases

Mansfield Library - Instructional

Media Services

Dana Copp, Library Director
Missoula County
32 Campus Dr #4968 Missoula, MT 59812
(406) 243-4070
Web Site: <http://www.lib.umt.edu/>
Catalog: <http://www.lib.umt.edu/catalog.htm>
Statewide Databases

Missoula Montana Stake

Family History Center

Merlyn Lofgren, Library Director
Missoula County
2621 Garland Drive Missoula, MT 59803
(406) 543-6148
OCLC, Statewide Databases

Rural Institute on Disabilities

Diana Spas, Library Director
Missoula County
634 Eddy Ave Lower Level Missoula, MT 59812
(800) 732-0323
Statewide Databases

Stranahan Library

Blakely Brown, Networking Coordinator
Missoula County
2925 North Reserve Street Missoula, MT 59808
(406) 541-3774
Statewide Databases

Western Montana Clinic Medical Library

Paulette Cote, Library Director
Missoula County
PO Box 7609 Missoula, MT 59807
(406) 329-7343
Statewide Databases

State of Montana Index

	Montana	United States	Rank in US
Geography			
Population per square mile 2000	6.2	79.6	49
Households 2000 (complete count)	358,667	105,480,101	44
Persons per household 2000 (complete count)	2.5	2.6	46
Resident Population			
Estimate (July 1) 2009	974,989	307,006,550	44
Estimate, percent change - April 1, 2000 to July 1, 2009	8.1	9.1	21
Total population estimate, net change - April 1, 2000 to July 1, 2009	72,799	25,581,948	40
April 1, 2000 (complete count)	902,195	281,421,906	44
Under 5 years (July 1 - estimate) 2009	62,438	21,299,656	43
Under 5 years, percent (July 1 - estimate) 2009	6.4	6.9	39
Under 18 years (July 1 - estimate) 2009	219,828	74,548,215	44
Under 18 years, percent (July 1 - estimate) 2009	22.5	24.3	40
65 years and over (July 1 - estimate) 2009	141,903	39,570,590	44
65 years and over, percent (July 1 - estimate) 2009	14.6	12.9	7
Total females, percent (July 1 - estimate) 2009	50.0	50.7	40
White alone (July 1 - estimate) 2009	880,107	244,298,393	43
Black alone (July 1 - estimate) 2009	7,282	39,641,060	50
American Indian and Alaska Native alone (July 1 - estimate) 2009	62,873	3,151,284	13
Asian alone (July 1 - estimate) 2009	6,810	14,013,954	49
Native Hawaiian and Other Pacific Islander alone (July 1 - estimate) 2009	707	578,353	42
Population 5 years and over, percent speaking language other than English at home, 2000	5.2	17.9	44
Civilian noninstitutionalized population, 5 years and over, with a disability 2000	145,732	49,746,248	44
Vital Statistics			
Births 2006	12,508	4,265,555	43
Deaths 2006	8,472	2,426,264	44
Infant deaths under one year 2006	73	28,527	48
Population 5 years and over by residence in 1995 - percent in same house, 2000 (sample)	53.6	54.1	32
Percent foreign born population 2000 (sample)	1.8	11.1	49
Education			
Educational attainment - persons 25 years and over - percent high school graduate or higher 2000	87.2	80.4	6
Educational attainment - persons 25 years and over - percent bachelors degree or higher 2000	24.4	24.4	22
Income/Poverty			
Per capita income in 1999	17,151	21,587	47
Median household income 2008	43,948	52,029	42
People of all ages in poverty - percent 2008	14	13	17
Personal income 2007	31,783	11,634,322	46
Per capita personal income 2007	33,225	38,615	40
Federal			
Federal Government expenditure - total FY 2008	8,842,960	2,771,782,152	46
Federal Government expenditure per capita FY 2008	9,141	9,116	22
Housing			
Housing unit estimates as of July 1, 2009	441,279	129,925,421	44
Housing unit estimates - net change, April 1, 2000 (base) to July 1, 2009	28,648	14,020,948	45
Housing unit estimates - percent change, April 1, 2000 (base) to July 1, 2009	6.9	12.1	40
Owner-occupied housing units - percent of total occupied housing units 2000 (complete count)	69.1	66.2	25
Median value of specified owner-occupied housing units 2000 (sample)	99,500	119,600	31
Housing units by units in structure - multiple units 2000 (sample)	15.7	26.4	43
New private housing units authorized by building permits - total 2009 (20,000-place universe)	1,686	582,963	47
Valuation of new private housing units authorized by building permits 2009 (20,000-place universe)	253,576	95,410,469	47
Employment/Business			
Civilian labor force 2009	498,907	154,142,000	44
Civilian labor force unemployment 2009	30,862	14,265,000	46
Civilian labor force unemployment rate 2009	6.2	9.3	47
Employment in all industries (NAICS, no code) 2007	647,427	180,943,800	44
Employment in all industries, net change 2000 - 2007	88,372	14,185,000	34
Employment in government (NAICS 92) 2007	93,107	24,257,000	45
Earnings in all industries (NAICS, no code) 2007	22,293,038	8,848,240,000	47
Earnings in all industries (NAICS, no code), average earnings per job 2007	34,433	48,900	51
Average travel time to work for workers 16 years and over not working at home 2000 (in minutes)	18	26	49
Private nonfarm establishments 2007	37,755	7,705,018	42
Private nonfarm employment for pay period including March 12, 2007	37,755	7,705,018	42
Private nonfarm employment for pay period including March 12, 2007, percent change 2000-2007	353,807.0	120,604,265.0	46
Nonemployer: total (NAICS 00) - establishments, 2007	83,999	21,708,021	43
Accommodation and Food Services: total (NAICS 72) - sales of establishments with payroll 2002	1,537,986	449,498,718	45
Total number of firms 2002	100,402	22,974,655	42
Manufacturing: total (NAICS 31-33) - value of shipments 2002	4,987,577	3,916,136,712	47
Wholesale trade: total (NAICS 42) - sales of establishments with payroll 2002	7,223,420	4,634,755,112	47
Retail trade: total (NAICS 44-45) - sales of establishments with payroll 2002	10,122,625	3,056,421,997	45
Retail trade: total (NAICS 44-45) - sales of establishments with payroll per capita 2002	11,116	10,615	17
Land in farms (NAICS) 2007 (acres) (adjusted)	61,388,462	922,095,840	2

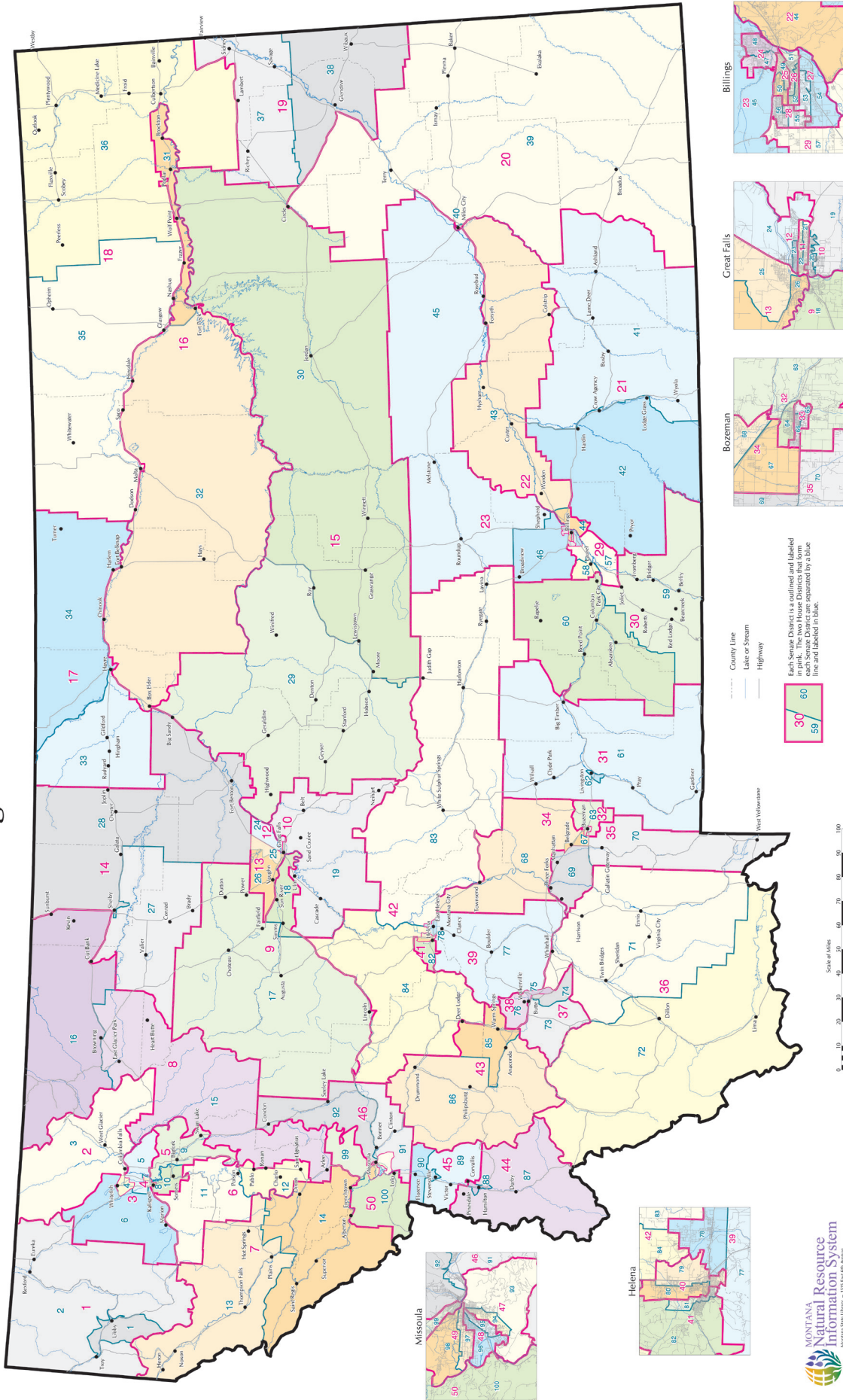
Source: U.S. Census Bureau

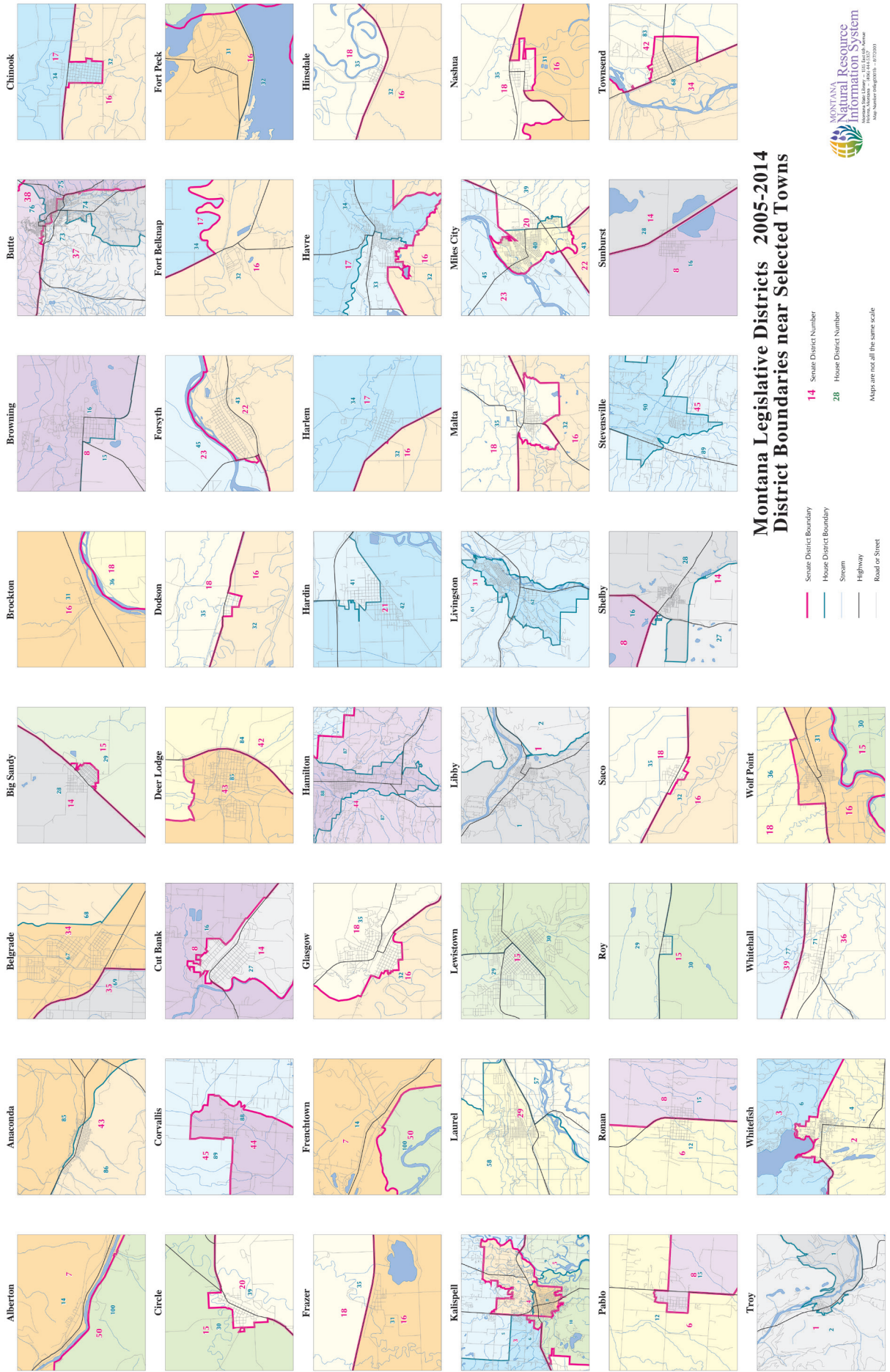
Missoula County Index

	County	Montana	Rank in MT
Geography			
Population per square mile 2000	36.9	6.2	3
Households 2000 (complete count)	38,439	358,667	2
Persons per household 2000 (complete count)	2.4	2.5	33
Resident Population			
Estimate (July 1) 2009	108,623	974,989	2
Estimate, percent change - April 1, 2000 to July 1, 2009	13.4	8.1	4
Total population estimate, net change - April 1, 2000 to July 1, 2009	12,824	72,799	4
April 1, 2000 (complete count)	95,802	902,195	2
Under 5 years (July 1 - estimate) 2009	6,396	62,438	2
Under 5 years, percent (July 1 - estimate) 2009	5.9	6.4	22
Under 18 years (July 1 - estimate) 2009	21,216	219,828	2
Under 18 years, percent (July 1 - estimate) 2009	19.5	22.5	45
65 years and over (July 1 - estimate) 2009	12,240	141,903	4
65 years and over, percent (July 1 - estimate) 2009	11.3	14.6	51
Total females, percent (July 1 - estimate) 2009	49.8	50.0	33
White alone (July 1 - estimate) 2009	101,443	880,107	2
Black alone (July 1 - estimate) 2009	866	7,282	3
American Indian and Alaska Native alone (July 1 - estimate) 2009	3,034	62,873	10
Asian alone (July 1 - estimate) 2009	1,279	6,810	2
Native Hawaiian and Other Pacific Islander alone (July 1 - estimate) 2009	102	707	2
Population 5 years and over, percent speaking language other than English at home, 2000	5	5	21
Civilian noninstitutionalized population, 5 years and over, with a disability 2000	13,972	145,732	2
Vital Statistics			
Births 2006	1,230	12,508	2
Deaths 2006	677	8,472	4
Infant deaths under one year 2006	4	73	6
Population 5 years and over by residence in 1995 - percent in same house, 2000 (sample)	45.4	53.6	55
Percent foreign born population 2000 (sample)	2.3	1.8	8
Education			
Educational attainment - persons 25 years and over - percent high school graduate or higher 2000	91.0	87.2	3
Educational attainment - persons 25 years and over - percent bachelors degree or higher 2000	32.8	24.4	2
Income/Poverty			
Per capita income in 1999	17,808	17,151	9
Median household income 2008	43,260	43,948	15
People of all ages in poverty - percent 2008	17	14	19
Personal income 2007	3,548	31,783	2
Per capita personal income 2007	33,587	33,225	15
Federal			
Federal Government expenditure - total FY 2008	686,808	8,842,960	16
Federal Government expenditure per capita FY 2008	6,400	9,141	50
Housing			
Housing unit estimates as of July 1, 2009	46,781	441,279	2
Housing unit estimates - net change, April 1, 2000 (base) to July 1, 2009	5,463	28,648	2
Housing unit estimates - percent change, April 1, 2000 (base) to July 1, 2009	13.2	6.9	2
Owner-occupied housing units - percent of total occupied housing units 2000 (complete count)	61.9	69.1	55
Median value of specified owner-occupied housing units 2000 (sample)	136,500	99,500	2
Housing units by units in structure - multiple units 2000 (sample)	23.3	15.7	3
New private housing units authorized by building permits - total 2009 (20,000-place universe)	225	1,686	3
Valuation of new private housing units authorized by building permits 2009 (20,000-place universe)	28,665	253,576	4
Employment/Business			
Civilian labor force 2009	58,242	498,907	2
Civilian labor force unemployment 2009	3,324	30,862	3
Civilian labor force unemployment rate 2009	5.7	6.2	20
Employment in all industries (NAICS, no code) 2007	78,732	647,427	2
Employment in all industries, net change 2000 - 2007	11,696	88,372	4
Employment in government (NAICS 92) 2007	10,568	93,107	1
Earnings in all industries (NAICS, no code) 2007	2,839,115	22,293,038	2
Earnings in all industries (NAICS, no code), average earnings per job 2007	36,060	34,433	9
Average travel time to work for workers 16 years and over not working at home 2000 (in minutes)	17.5	17.7	27
Private nonfarm establishments 2007	4,348	37,755	4
Private nonfarm employment for pay period including March 12, 2007	4,348	37,755	4
Private nonfarm employment for pay period including March 12, 2007, percent change 2000-2007	48,621.0	353,807.0	2
Nonemployer: total (NAICS 00) - establishments, 2007	9,169	83,999	4
Accommodation and Food Services: total (NAICS 72) - sales of establishments with payroll 2002	205,956	1,537,986	3
Total number of firms 2002	11,141	100,402	4
Manufacturing: total (NAICS 31-33) - value of shipments 2002	551,937	4,987,577	3
Wholesale trade: total (NAICS 42) - sales of establishments with payroll 2002	715,323	7,223,420	2
Retail trade: total (NAICS 44-45) - sales of establishments with payroll 2002	1,525,115	10,122,625	2
Retail trade: total (NAICS 44-45) - sales of establishments with payroll per capita 2002	15,590	11,116	1
Land in farms (NAICS) 2007 (acres) (adjusted)	281,893	61,388,462	50

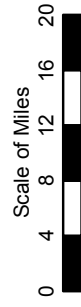
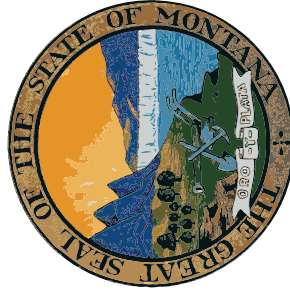
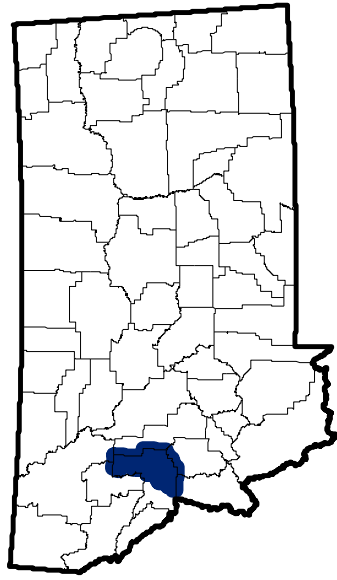
Source: U.S. Census Bureau

Montana Legislative Districts 2005-2014

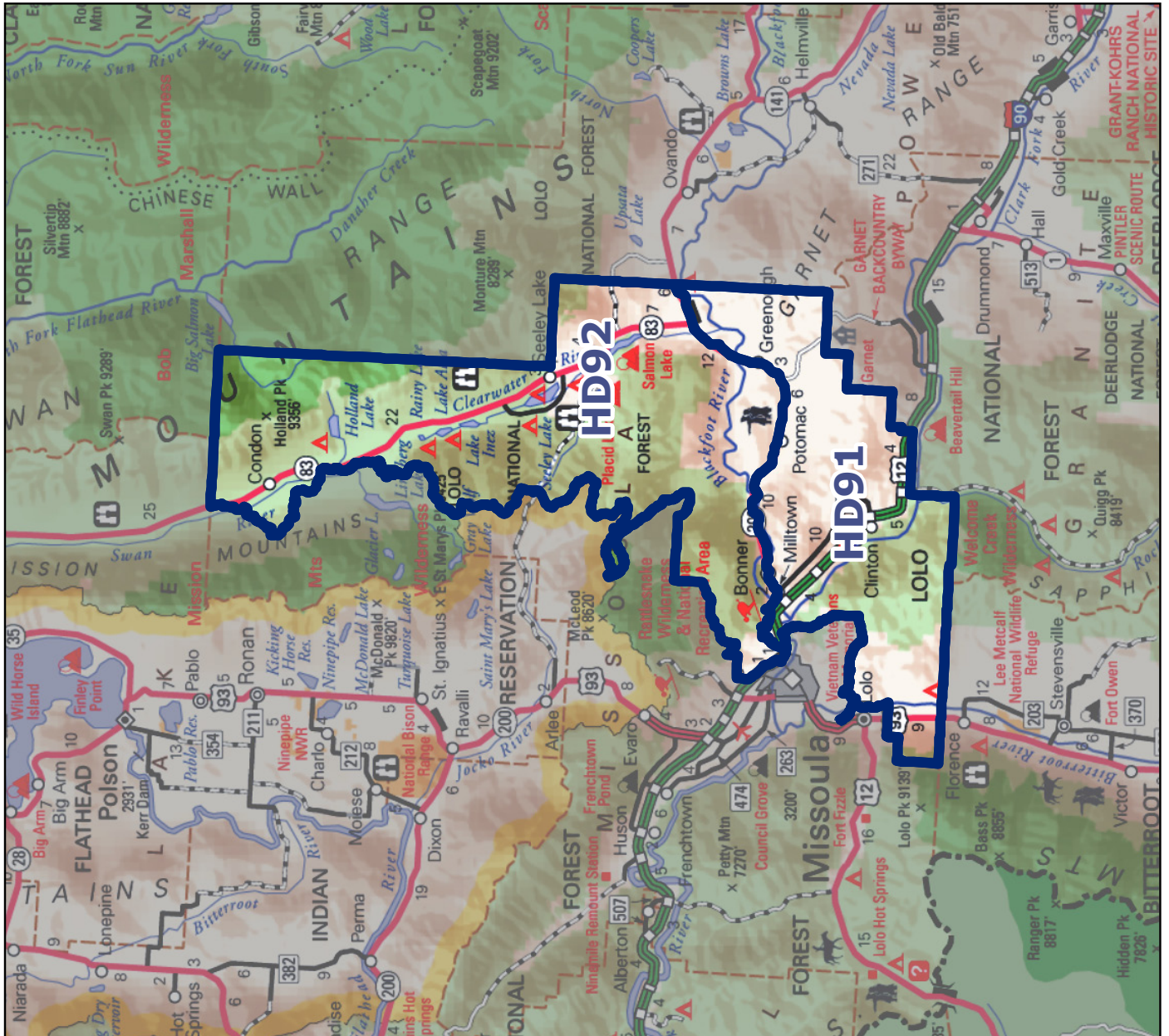


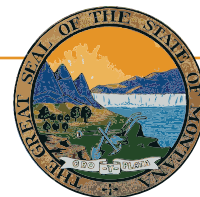


Montana Senate District 46



Montana State Library
Natural Resource
 Information System





Montana State Library

1515 East 6th Avenue
PO Box 201800
Helena, MT 59620
(406) 444-3115

<http://msl.mt.gov>

Statewide Library Resources

- **Montana Shared Catalog**
- **Montana Library Directory**

<http://mymontanalibrary.org>

http://msl.mt.gov/For_Librarians/Library_Directory

Montana State Digital Library

- **Library Information Services**
 - Archive Montana
 - Montana State Publications Online
 - Request or submit State Publications
 - Montana State Library catalog
 - Online Magazines & Journals
 - Research Databases
- **Natural Resource Information System**
 - Montana GIS Portal
 - Maps and Geographic Information
 - Montana Digital Atlas/Map Gallery
 - Water Information
- **Natural Heritage Program**
 - Montana Field Guide
 - Natural Heritage Tracker
 - Species of Concern Reports - Animals
 - Species of Concern Reports - Plants
 - Map Viewer

<http://archive.msl.mt.gov>

<http://statepublications.mt.gov>

http://msl.mt.gov/for_state_employees/State_Publications

<http://msl.mt.gov/msc>

http://msl.mt.gov/for_state_employees/journals.asp

http://msl.mt.gov/For_State_Employees/Find_Resources_Online/

<http://nris.mt.gov>

<http://gisportal.mt.gov/>

<http://nris.mt.gov/gis>

<http://nris.mt.gov/interactive.html>

<http://nris.mt.gov/wis>

<http://mtnhp.org/>

<http://fieldguide.mt.gov/>

<http://mtnhp.org/Tracker>

<http://mtnhp.org/SpeciesOfConcern/?AorP=a>

<http://mtnhp.org/SpeciesOfConcern/?AorP=p>

<http://mtnhp.org/mapviewer/>

Montana Talking Book Library

- On-line catalogs and services – WebOpac
WebBraille

http://msl.mt.gov/talking_book_library

<http://www.klasweb.msl.mt.gov>

Montana State Library In-House Partners

- **Montana Base Map Service Center**
- **Montana Fish, Wildlife & Parks**
- **Natural Resources Conservation Service**

<http://giscoordination.mt.gov/>

<http://fwp.mt.gov>

<http://www.mt.nrcs.usda.gov/>

Legislative Snapshot

http://msl.mt.gov/legislative_snapshot/