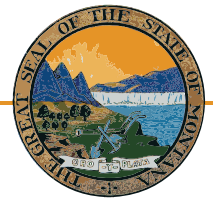


# Legislative Snapshot 2011



Includes information for the State of Montana,  
Senate District 23, and House Districts 45 and 46.

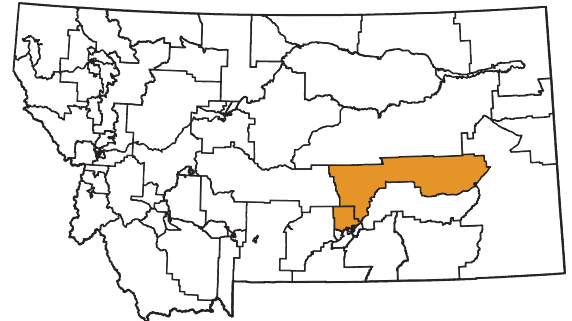
[http://msl.mt.gov/legislative\\_snapshot/](http://msl.mt.gov/legislative_snapshot/)



*Senate District 23*

**Senator Alan Olson (R)**

18 Halfbreek Creek Road  
Roundup, MT 59072-6524



*House District 45*

**Representative Tom Berry (R)**

PO Box 157  
Roundup, MT 59072-0157



*House District 46*

**Representative Ken Peterson (R)**

424 48th Street West  
Billings, MT 59106-2306



# Letter from the Montana State Librarian

On behalf of the Montana State Library, I would like to welcome you to the 2011 legislative session. Our information experts have compiled this booklet to be a resource to you as you take on the important work of representing the collective needs of all Montanans and the special needs of your district during this legislative session.



As for past editions, we reviewed proposed bills and national and state trends related to what we believe will be major themes in this legislative session. To that end, you will find a wide range of information on our state's economy, energy production and development, and land and water use. Education is always an important issue, and you will find relevant information on our state's public schools and test scores, as well as on the libraries that help to augment what our schools do. While the drought seems to have subsided, our forests are now inundated by both blight and bark beetles, and you will be able to take a look at the most current information on maps available through the State Library. Finally, wildlife and recreation will always be an important part of Montana life, and we've pulled several highlights from our collection that might help to guide your decision-making this session.

The Montana State Library is a small and very unique agency. We employ not only librarians, but GIS and natural resource specialists and partner with botanists and zoologists, as well as federal and state agencies. We manage an enormous collection of state publications, as we simultaneously work to ensure that Montana's blind and physically disabled have access to reading materials and information.

We also work on behalf of all of Montana's libraries to help them provide the latest and best information and library services to their patrons – your constituents – whether it's downloadable books, public access computers, online resources, or just the latest bestseller. Without the Montana State Library leading the charge, Montana libraries would not be able to afford these resources and services for their patrons – all of which are being used in record numbers during these difficult economic times. In this age of information, most of which is only accessed online, the Montana State Library, through libraries across the state, provides a vital link that affects Montanans in a multitude of ways.

We created this book for you to not only to provide vital information to help you make difficult decisions in the coming months, but to demonstrate the power of what a diverse staff with amazingly diverse skills can do to make information in many different forms available to every Montanan. We are very proud of what we do here at the State Library as we work to empower Montanans by providing access to information, enhancing learning in families and communities, and building 21st Century skills.

We hope that you use this book throughout the session and stop by to see us – in person or virtually. Whether you visit us at our library or online, you will be able to browse our collection of government information, get help researching a specific issue, or find a quiet place to work or meet with colleagues. We are located one block east of the Capitol, behind the Montana Historical Society, at the north end of the Justice building. And of course, our services are available 24 hours a day, seven days a week at <http://msl.mt.gov>.

Sincerely,

A handwritten signature in black ink that reads "Darlene Staffeldt". The signature is written in a cursive, flowing style.

Darlene Staffeldt  
Montana State Librarian

## Senate District 23 House District 45 House District 46

### Table of Contents

2	Recent Performance of the Montana Economy and its Industries
5	Recovery
6	Demographics
8	Education
9	Libraries
11	Land
12	Water
13	Environmental Impacts
14	Energy, Mines
15	Wildlife and Recreation

### Appendices

i	Library Directory
vi	State of Montana Index

### Senate District 23 County Indexes

vii	Custer County
viii	Musselshell County
ix	Rosebud County
x	Yellowstone County

### Maps

xi	Legislative Districts
xiii	Senate District 23

# Recent Performance of the Montana Economy and Its Industries

Source: Montana Department of Labor, Research and Analysis Bureau

The Montana economy has undergone significant changes in the past two years as the national recession impacted the state. Leading up to the recession, Montana was experiencing faster employment growth, larger wage growth, and lower unemployment than the nation as a whole. Over the 1997-2007 time period, employment in Montana grew at a rate of 2.1% per year – far surpassing the national growth rate of 1.1% and Montana’s long-term average of 1.2% from 1976 to 2009.

Montana continued to outperform the nation during the recession with payroll employment losses of 5.8% compared to 6.1% nationally. In fact, Montana had only two quarters of negative personal income growth in 2008 and 2009 compared to four quarters nationally. Our industry mix, more responsible borrowing and lending practices, and the momentum of the economy preceding the downturn all contributed to our above-average performance. Montana’s unemployment rate also outperformed the national rate. Montana’s unemployment rate increased by 2.7 points from 3.5% in 2007 to 6.2% in 2009, compared to a 4.7 point increase nationally to 9.7% in 2009.

Despite Montana’s better performance, there were a significant number of Montana workers who lost their jobs during the recession, and even Montanans who retained their jobs have experienced slower wage growth. The average wage increased from 2008 to 2009 by only 1.3%



to \$33,760; wage growth in prior years ranged from three to four percent.

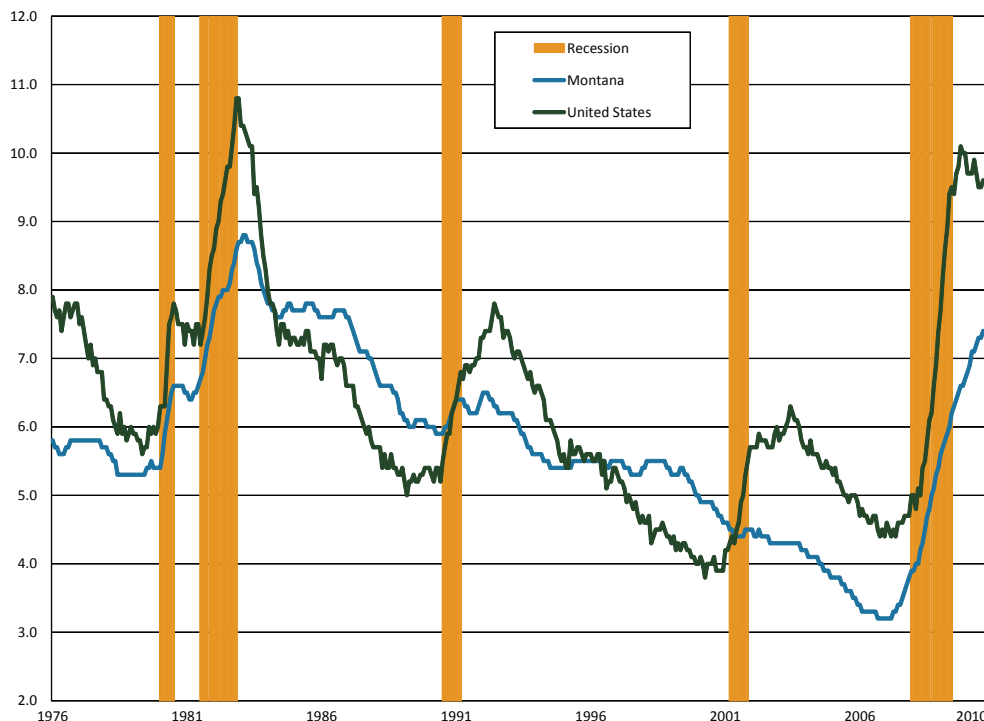
Although the recession is officially over and personal income growth has returned, job growth remains slow. Montana employment grew during the first half of 2010, but jobs were lost in the third quarter as government stimulus spending slowed. Some of this slow job growth is expected because strong labor productivity gains have reduced the demand for workers. Further, employment always lags an economic recovery. Figure 1 shows the U.S. and Montana unemployment rate since 1976 with

recessionary periods designated by the orange background. In recent recessions, the unemployment rate continued to increase after the recession officially ended.

There have been three industries that have continued to grow throughout the recession, helping to stabilize the Montana economy and providing job opportunities for dislocated workers from other industries – health care, public administration, and education. Public administration and education workers are predominantly hired by local, state, or federal governments, and benefited from government stimulus spending during the recession. Over 56% of government employment is hired at the local level, with 26% hired by the state. Government plays an important part of the Montana economy, comprising about 16% of GDP in 2008 and about 20% of employment during 2009. The industry also serves as a stabilizing, counter-cyclical force with slow growth in both economic prosperity and during downturns. Although government employment grew faster than private employment during this recession, private industry outpaced government hiring in the years leading up to the recession.

Health care was the fastest-growing industry during 2007-2009 with employment growth of 7.1% and a job gain of almost 4,100 workers from 2007 to 2009. Employment growth in health care has since slowed (see Figure 3). Health care related occupations, such as registered nurses, nurses’ aides, and home health care aides, are expected to continue to grow as the baby boom generation ages and demands more health care services. The growing health care occupations may provide employment opportunities for many workers who lost their jobs during the recession.

**Figure 1. U.S./Montana Unemployment Rates and Recession**



One way to examine the long-term impact of the recession on Montana's economy is to divide the industries into three categories based on their roles in the economy – base industries, consumer industries, and business-support industries. Base industries bring new money into Montana through exports and help drive growth in other industries through the increase in wealth. In Montana, these industries are generally natural resource based and include agriculture, mining, energy, manufacturing, and timber. According to the Montana Department of Commerce, the top exports from Montana are bulk wheat, inorganic chemicals, and industrial machinery. Table 2 lists these exports. In addition, federal government services can be thought of as a base industry in Montana because we receive more federal spending than what is paid by Montanans in federal taxes. Tourism can also be a base industry, although many of Montana's tourists come from within the state.

**Table 2. Top 10 Exports from Montana Worldwide in Millions of U.S. Dollars**

Rank	Export Category	Value (Millions of U.S. Dollars)
1	Bulk Wheat	447.40
2	Inorganic Chemicals	305.00
3	Industrial Machinery	156.00
4	Mineral Fuel, Oil, etc.	66.00
5	Ores, Slag, Ash	65.30
6	Vehicles, Parts, and Accessory Items	58.40
7	Organic Chemicals	57.70
8	Salt, Sulfur, Earth, and Stone	42.30
9	Paper & Paperboard	33.00
10	Miscellaneous Chemical Products	29.20

Source: Montana Department of Commerce Census and Economic Information Center

During 2008, the agriculture, mining, and energy sectors benefited from high commodity prices and were able to bring wealth into the state to support the state's economy during the first year of the downturn. Commodity prices decreased to long-term trends during 2009, however, leading to a 13% job loss in the mining industry from 2007-2009. Mining employment is relatively small, however, and the mining job loss was less than 1,000 workers. With stronger commodity prices in 2010, mining employment has regained many of their lost jobs. Figure 3 tracks employment levels in mining and other industries during the recession.

However, other base industries in Montana were more severely harmed by the recession. In particular, Montana manufacturers faced plant closures and job losses of over 3,000 jobs (14.8%) from 2001-2009 because of low worldwide demand for their products. Because many manufacturing processes are energy intensive, high energy prices harmed the manufacturing industry even while helping Montana's energy production industries. Over 53% of the manu-

facturing losses occurred in the wood products manufacturing industry and were related to the national downturn in the housing market. The wood products industry lost approximately 1,600 jobs in the past two years. Because the national housing market is expected to recover slowly, and because plant closures and mass layoffs have left holes in the supply chain for many manufacturers, the recession is likely to have long-term impacts on the logging and manufacturing industries in Montana.

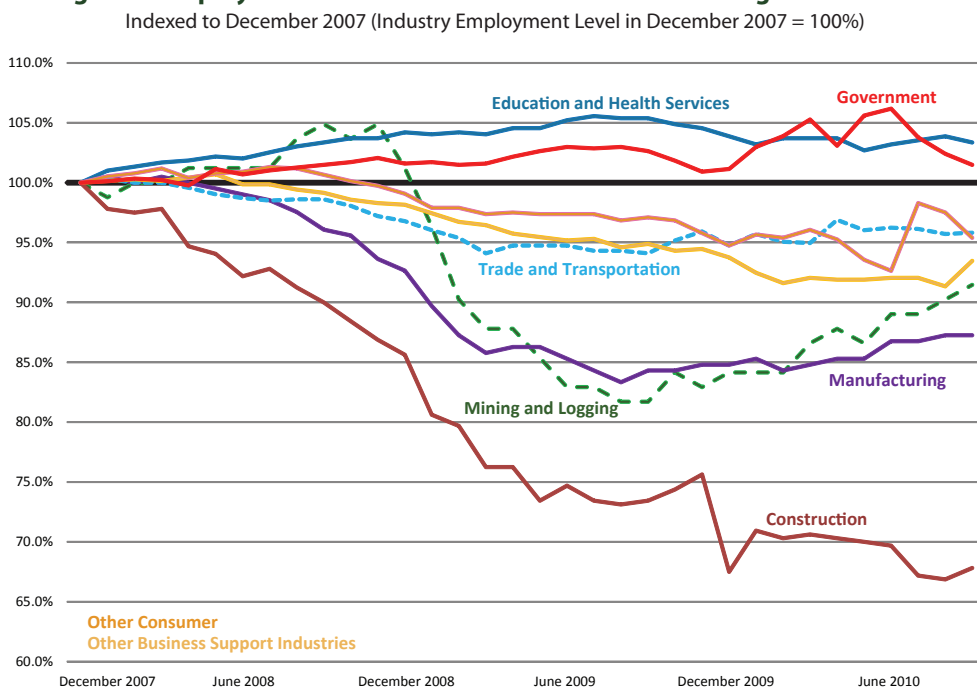
The new wealth brought into Montana by base industries drives economic growth in consumer-based industries. Consumer-based industries are industries where growth depends on an increase in population or income, such as construction, retail, health care, or entertainment. As large employers, consumer-based industries play a large role in our economy. However, these industries tend to pay lower wages because of a predominance of lower-skilled jobs. Consumer-based industries made up 61% of Montana's employment, but paid only 52% of wages in the second quarter of 2010.

With the large loss of jobs in manufacturing, wood products, and in other base industries, Montanans had less money to spend in consumer-based industries, resulting in further job losses. The construction industry was the worst hit industry with over 8,300 lost jobs from 2007 to 2009 – a decline of 24.2%, with job losses continuing in 2010. Construction jobs represent over 55% of the total number of jobs lost during the recession. The retail industry faced losses of over 3,700 jobs, but the percentage of jobs lost is smaller at 5.0% due to the large size of the industry.

Finally, the third industry category is business support industries, which require a nexus of economic activity to prosper. Business support industries, such as transportation and warehousing, wholesale, professional services, and administrative support services, depend on the growth of other industries. As the recession affected other industries in the state, the business support industries experienced a slow and steady decline in jobs. Losses in these industries are not as severe as the losses in construction, manufacturing, and retail, ranging from two to four percent of the 2007 employment. Business support services will need other industries to have stronger growth before regaining employment. In the long-term, continuing either amenity-driven population growth or economic growth will allow business support industries to prosper.

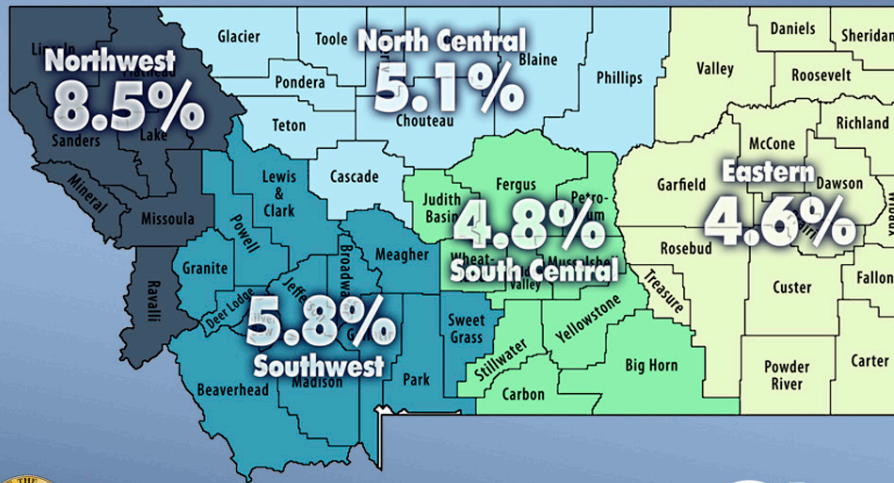
In summary, the Montana economy remains fairly reliant on traditional natural resource-based industries to bring in new money into the state. Many of these base industries will join the nation in economic recovery, but the recession's impacts on the wood products industry and on some manufacturers may be long-lasting. The performance of these base industries will drive growth in the consumer-based and service industries. Consumer-based industries were the fastest growing industries prior to the recession, and employ the majority of the state's workforce. As job and wage growth resumes as a part of economic recovery, consumer-based industries should prosper. Finally, the business support industries depend on a nexus of population and industry. All of these industries are interconnected and rely on each other for success.

**Figure 3. Employment in Selected Montana Industries during the Recession**





## 2009 Annual Unemployment Rates by Region



Montana  
Department of Labor and Industry



Figure 4

### Montana's Regions

The Northwestern portion of Montana felt the impact of the recession most acutely, largely because the region had a large concentration of construction, wood products, and manufacturing workers. All of these industries had large employment losses during the recession. The 2009 average unemployment rate for this region was 8.5%, as shown in Figure 4. In comparison, all other regions had unemployment rates of less than 6%.

In contrast, the Eastern portion of Montana has higher concentrations of employment in utilities and public administration than does the Western portion of the state, with a nearly average concentration in health care. The growth of these industries supported the Eastern Montana economy during the recession. In addition, the Eastern region was not as heavily reliant on the declining industries of construction, retail, and manufacturing as were other parts of the state. Further, the agriculture and mining industries posted relatively strong performances during 2008 due to high commodity prices, although these industries retracted when commodity prices declined.

Despite larger job losses in the Western portion of Montana, the Northwest and Southwest regions still have more jobs than other parts of the state. The more vibrant economies of Western Montana will likely regain their status as economic drivers of our state as the economy recovers from the recession.

### Challenges to the Montana Economy

#### Reducing Unemployment

Although the recession is officially over, the Montana economy continues to face challenges as it exits the recession. The first and foremost of these challenges is to reduce unemployment by adding more jobs and ensuring that our workforce has the skills to fill the new jobs. Although our overall job growth depends on the economic performance of the U.S. and global economy, out-of-work Montanans can prepare themselves for opportunities when job growth resumes. Many industries, particularly construction and retail, have lost so many jobs that it will be difficult for workers to find jobs in their old occupation. For example, the Montana economy is expected to add over 100 new carpenter jobs per year as the economy recovers, but about 2,000 carpenters lost their jobs in the last two years, still leaving many of these workers without a job. These workers need to be retrained for

### Percent Change in Property Values Due to Reappraisal

	Residential	Commercial	Agricultural	Forest Land	Total
Montana	1.76	2.46	-4.66	-6.72	5.19
Custer County	-1.08	3.34	-8.59	-2.88	22.43
Musselshell County	-1.11	39.05	3.25	-34.82	8.67
Rosebud County	0.58	0.76	-7.22	-1.53	-1.44
Yellowstone County	-0.61	3.47	-4.09	-1.41	5.87

Source: Montana Department of Revenue

jobs that have continued to grow throughout the recession, like those in the health care industry, in order to shorten their period of unemployment.

### Aging Workforce

A longer-term challenge for the Montana economy is our aging workforce. According to the U.S. Census Bureau's population projections, the percentage of the Montana population that will be over the age of 65 is expected to reach 25% by 2030, making Montana one of the oldest states in the nation. The aging of our population will likely have obvious impacts on our economy, such as increased demand for health care, greater demand for the arts, and changes in state spending for both education and Medicare. The aging of the Montana population will likely drive changes in Montana's education system as well. There will be fewer young people graduating from Montana high schools and more non-traditional students in the Montana University System.

The aging of the population will also cause significant tightening of Montana's labor force. The U.S. Census Bureau's population projections indicate that the working age population in Montana (ages 18-65) will start to decrease starting in

2014, leaving businesses with fewer candidates for job openings. The recession has reduced the urgency posed by the changing demographics of Montana's workforce because of higher unemployment and because the loss of wealth during the recession has caused many workers to delay retirement. However, as our economy recovers, Montana's older workers will be leaving the workforce. Businesses need to plan for the loss of the knowledge and experience held by these workers and for the potential of a tight labor market in the future.



## Federal ARRA Funds Awarded to Federal Agencies for Projects in Montana

Federal agency recovery awards granted in Montana as reported by recipients.

	Awards	Total Funds Awarded	Funds Per Capita	Funds Received	Local Amount	Jobs Reported
Corps of Engineers	83	31,119,433	32	12,052,085	23,750,292	125.58
Department of Agriculture	522	228,999,873	235	45,362,231	228,648,750	569.87
Department of Commerce	10	24,710,932	25	3,197,892	28,687,567	6.71
Department of Defense (except military departments)	3	940,714	1	891,041	940,714	
Department of Education	641	254,783,938	261	142,782,232	254,566,583	1,681.61
Department of Energy	137	98,884,317	101	25,668,316	125,125,460	209.27
Department of Health and Human Services	270	99,411,947	102	39,551,704	101,083,953	336.32
Department of Homeland Security	27	46,927,021	48	9,923,330	47,688,814	82.01
Department of Housing and Urban Development	50	40,575,921	42	26,026,787	40,575,921	278.39
Department of Justice	106	46,648,742	48	11,105,801	47,835,290	125.01
Department of Labor	60	20,950,269	21	13,009,832	18,718,090	95.82
Department of the Air Force	79	46,081,356	47	19,849,329	43,993,659	55.94
Department of the Army	1	2,527,200	3	2,137,556	2,527,200	11
Department of the Interior	211	121,136,937	124	72,050,481	121,150,873	641.28
Department of the Treasury	2	2,600,000	3	2,600,000	2,600,000	
Department of Transportation	164	292,750,431	300	206,123,442	290,768,051	965.16
Department of Veterans Affairs	12	4,647,311	5	528,439	4,647,311	6.02
Environmental Protection Agency	134	50,383,953	52	38,756,242	50,333,953	76.01
Executive Office of the President	1	13,574	0	13,574	13,574	
General Services Administration	47	66,616,969	68	5,491,124	54,870,279	31.46
National Aeronautics and Space Administration	3	99,784	0	99,784	218,958	0.44
National Foundation on the Arts and the Humanities	5	416,000	0	382,430	416,000	6.63
National Science Foundation	40	21,113,454	22	4,328,693	21,100,349	42.66
Other Independent Agencies	6	1,171,481	1	1,137,555	1,171,481	39.41
Unassigned	3	0	0	0	705,779	
<b>Total</b>	<b>2,617</b>	<b>1,503,511,558</b>	<b>1,542</b>	<b>683,069,899</b>	<b>1,512,138,901</b>	<b>5,386.60</b>

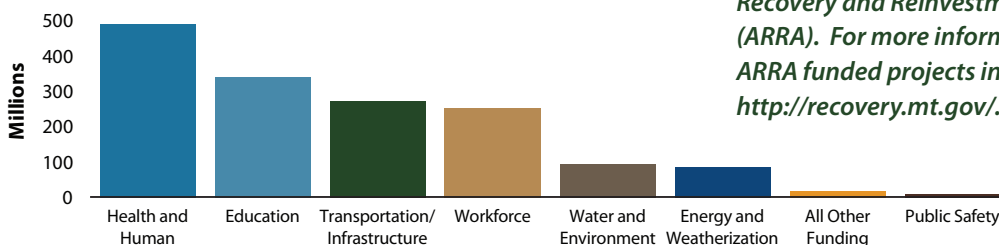
Source: Recovery.gov, November 2010

## Broadband Technology Opportunity Program

Under the Broadband Technologies Opportunity Program (BTOP) and in partnership with the Bill & Melinda Gates Foundation, the Montana State Library will partner with 42 of Montana's public libraries to expand access to free, high-speed internet to 86% of the state's population by 2013. Though most local libraries have computers with internet access, many do not have enough computers, fast enough broadband speeds, or ADA-accessible computer facilities to provide adequate services for the thousands of Montanans who need it. As a result, library patrons currently have long wait times of up to two hours for computers, as well as unacceptably slow browsing speeds that inhibit library patrons' ability to apply for social services, find jobs, or complete research.

<http://www.msl.mt.gov/btop/>

## Montana Reinvestment Act Project Categories



Source: <http://recovery.mt.gov/>, December 2010



## 2009 Montana ARRA Funds Awarded

County	Amount
Beaverhead	15,160,291
Big Horn	26,179,900
Blaine	11,507,677
Broadwater	4,472,857
Butte Silver Bow	49,695,135
Carbon	8,354,553
Carter	11,359,144
Cascade	78,805,111
Chouteau	3,243,647
Custer	10,868,688
Daniels	1,539,206
Dawson	9,272,730
Deer Lodge	9,141,378
Fallon	9,656,539
Fergus	14,960,424
Flathead	117,634,647
Gallatin	137,761,188
Garfield	726,212
Glacier	28,838,902
Golden Valley	715,716
Granite	3,382,894
Hill	20,518,576
Jefferson	25,233,220
Judith Basin	1,761,204
Lake	42,073,433
Lewis & Clark	72,455,559
Liberty	1,792,032
Lincoln	23,183,008
Madison	6,386,980
McCone	2,253,416
Meagher	7,682,950
Mineral	8,395,247
Missoula	141,742,279
Musselshell	3,633,199
Park	15,500,397
Petroleum	432,552
Phillips	12,798,377
Pondera	7,460,172
Powder River	1,243,929
Powell	16,419,596
Prairie	1,300,842
Ravalli	41,595,559
Richland	5,167,813
Roosevelt	24,451,178
Rosebud	15,271,410
Sanders	15,697,306
Sheridan	4,821,528
Stillwater	9,221,276
Sweet Grass	4,612,903
Teton	9,018,958
Toole	6,468,309
Treasure	460,621
Valley	5,686,257
Wheatland	1,636,591
Wibaux	1,871,705
Yellowstone	133,317,560
Pass through to states	16,188,675
Statewide	331,827,343
Unallocated	18,219,767

Source: [www.recovery.mt.gov](http://www.recovery.mt.gov/), November 2010

# Demographics

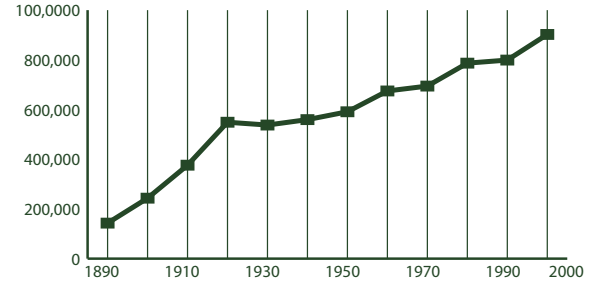
## 2008 Poverty and Median Income Estimates

Montana ranked 42nd among all U.S. states for median income in 2008.

	Median Household Income	% in Poverty All Ages	% in Poverty Ages < 18
United States	52,029	13.2	18.2
Montana	43,948	14.1	19.2
Custer County	39,859	16.2	21.6
Musselshell County	34,318	18.1	31.3
Rosebud County	45,789	22.5	31.5
Yellowstone County	49,337	10.8	14.5

Source: U.S. Census Bureau, Small Area Estimates Branch

## Montana Historic Population Growth 1890 - 2000 Censes



Source: U.S. Census Bureau Population

## Population Growth in Montana and Selected Counties

Montana's population density is about 6.5 persons per square mile.

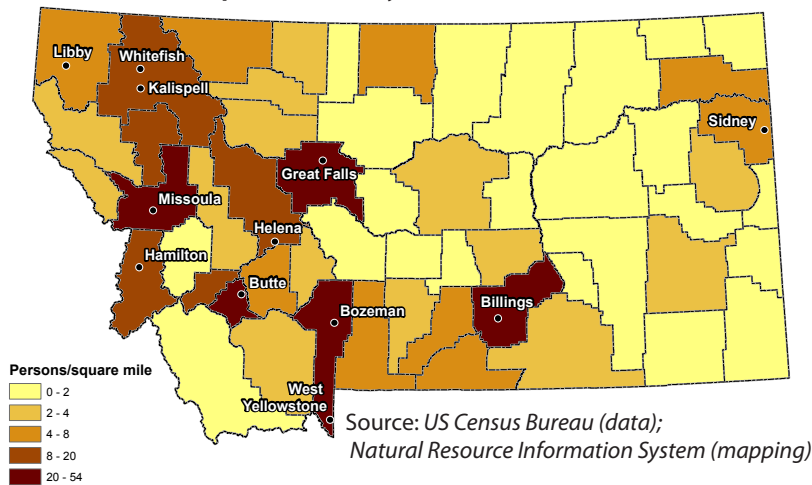
	2000 Census	2009 Estimate	Percent Growth
United States	281,421,906	307,006,550	.09
Montana	902,195	957,861	.08
Custer County	11,696	11,189	-4.33
Musselshell County	4,497	4,600	2.29
Rosebud County	9,383	9,258	-1.33
Yellowstone County	129,352	144,797	11.94

Source: U.S. Census Bureau

Look for preliminary 2010 Census data available from the US Census Bureau beginning in February, 2011 <http://2010.census.gov/>



## 2008 Population Density Estimates - Total Persons



## 2009 Population Estimates

Montana	
Male	487,981
Under 5 years	31,949
Under 18 years	112,780
18 to 64 years	310,778
65 years and over	64,423
Female	487,008
Under 5 years	30,489
Under 18 years	107,048
18 to 64 years	302,480
65 years and over	77,480
<b>Total</b>	<b>974,989</b>

Source: US Census Bureau, Population Estimates Program

## Housing Units for Selected Counties

According to the U.S. Census Bureau, the total number of housing units in Montana increased 6.9% during this period.

	2000	2001	2002	2003	2004	2005	2006	2007	2008	2009	% Change
Custer County	5,360	5,369	5,364	5,359	5,355	5,361	5,358	5,354	5,357	5,344	-0.30
Musselshell County	2,317	2,321	2,319	2,317	2,314	2,322	2,318	2,315	2,314	2,312	-0.22
Rosebud County	3,912	3,931	3,935	3,941	3,940	3,953	3,947	3,943	3,952	3,946	0.87
Yellowstone County	54,563	55,132	55,608	56,226	56,999	57,861	58,353	58,894	59,385	59,773	9.55

Source: U.S. Census Bureau, Population Estimates

## Corrections - Inmate Population

	2004	2005	2006	2007	2008	2009
Male Prison Beds	2,005	2,180	2,252	2,258	2,170	2,245
Montana State Prison - Deer Lodge	1,325	1,430	1,458	1,463	1,391	1,416
Great Falls Regional Prison	149	151	151	147	143	150
Dawson County Regional Prison - Glendive	140	141	142	142	141	143
Crossroads Correctional Center - Shelby	391	458	501	506	495	536
Actual population_male	2,005	2,180	2,252	2,258	2,170	2,245
Female Prison Beds	171	192	233	209	165	185
Montana Women's Prison - Billings	164	186	218	191	148	168
Intensive Challenge Program - MWP - Billings	7	6	15	18	17	17
Actual population_female	171	192	233	209	165	185

Source: Montana Department of Corrections, May 2010

## Employment Status of Montana Women

In 2009, the Interagency Committee for Change by Women (ICCW) conducted a survey of women in the workforce. For more information visit <http://www.mdt.mt.gov/iccw/surveys/wwork.shtml>.

	1978	2009
Total Employed	45.30	94.7
Full-Time	30.50	84
Part-Time	14.80	10.6
Total Not Employed	54.60	5
Non-working	39.80	4.6
Retired	12.50	0.6
Disabled	2.3	0.1

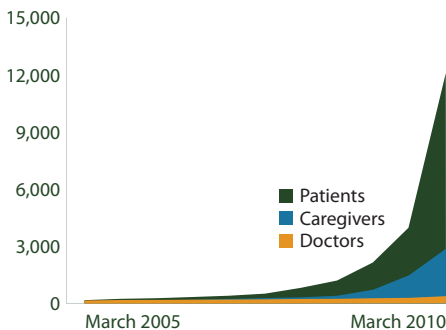
Source: 2009 Survey of Women and Work

## Montana Children and Social Services

	Children's Population 2008	Percent of Children in Poverty 2008	Free/Reduced Price Lunch Eligibles 2008/09	Daycare Program Participants* 2007	Special Education Program Enrollment 2008/09	Healthy Montana Kids Enrollment 2009	Medicaid Enrollment 2009
Montana	220,358	21.0	51,333	8,051	17,636	17,465	46,463
Custer County	2,532	21.6	615	210	233	175	504
Musselshell County	860	31.3	304	33	121	143	229
Rosebud County	2,700	31.5	1,072	93	295	109	971
Yellowstone County	34,423	14.5	6,824	2,311	2,641	2,030	7,407

Source: MontanaKidsCount, <http://montanakidscount.org/> \*facilities participating in state program

## Montana Medical Marijuana Use Program



Source: Montana Medical Marijuana Program, June 2010

## Montana Sexual or Violent Offender Registry Number of Convictions by Offense

Arson	94
Assault (including Aggravated Assault)	1,727
Dangerous Drugs	82
Family Offense	619
Homicide	138
Incest With A Minor	116
Kidnapping	76
Other	101
Robbery	536
Sex Offense	187
Sexual Assault	2,333
<b>Total</b>	<b>6,004</b>

Source: Department of Justice, Montana Sexual or Violent Offender Registry, September 2010

## Veteran Population Projections

Montana is ranked second among the states for percent of the civilian population 18 years and over who are veterans. (13.9 percent, 2006-2008 American Community Survey)

	2000	2010	2020	2030
Montana	108,330	102,015	89,052	76,230
Custer County	1,537	1,300	924	699
Musselshell County	650	587	445	336
Rosebud County	976	845	679	475
Yellowstone County	14,772	13,875	12,161	10,596

Source: United States Department of Veteran Affairs, October 2007

## Temporary Assistance For Needy Families (TANF) Comparison

	2005 Cases	2005 Case Avg	2009 Cases	2009 Case Avg	Apr 2010 Cases	Apr 2010 Case Avg
Montana	4,820	356	3,466	392	3,784	426
Custer County	21	304	12	341	14	316
Musselshell County	6	339	12	306	11	320
Rosebud County	200	372	192	402	177	435
Yellowstone County	649	358	531	399	642	445

Source: Montana Department of Public Health and Human Services, April 2010



# Education

## Schools in Senate District 23

There are 832 public K-12 and 14 private accredited schools in Montana. Montana also has 15 public, 6 private, and 7 tribal colleges. Senate and House district figures in the table below show the number of schools located in cities within 10 miles of the district's boundaries.

	Senate Montana	House District 23	House District 45	House District 46
High Schools	173	78	29	63
Middle Schools	213	134	29	119
Elementaries	446	502	65	451
<b>Total</b>	<b>832</b>	<b>714</b>	<b>123</b>	<b>633</b>

Source: Office of Public Instruction, September 2010

## Montana School Size and Enrollment 2009 - 2010

School Size	Percent of Schools	Enrollment	Percent of Enrollment
>500	6	42,927	30
250 to 499	19	56,027	40
100 to 249	19	26,444	19
50 to 99	14	8,563	6
<50	41	7,846	6
<b>Total</b>	<b>100</b>	<b>141,807</b>	<b>100</b>

Source: OPI Facts About Montana Education, September 2010

## School Districts - Number of in Area

	Senate District 23	House District 45	House District 46
Elementary	23	18	2
Secondary	12	10	2
Unified	6	6	1
<b>Total</b>	<b>41</b>	<b>34</b>	<b>5</b>

Source: Montana Base Map Service Center, November 2009

## Montana Dropout Rate - Percent of Total Enrollment

Grade / Gender	2004-05	2005-06	2006-07	2007-08	2008-09	5-yr Average
7 & 8 Total	0.2%	0.2%	0.3%	0.3%	0.3%	0.2%
Male	0.2%	0.2%	0.3%	0.3%	0.4%	0.3%
Female	0.1%	0.2%	0.3%	0.3%	0.2%	0.2%
HS Total	3.3%	3.6%	3.7%	5.2%	5.1%	4.2%
Male	3.6%	3.9%	4.2%	5.5%	5.6%	4.5%
Female	3.1%	3.3%	3.2%	4.8%	4.6%	3.8%
Overall Total	2.3%	2.5%	2.7%	3.6%	3.6%	2.9%
Male	2.5%	2.7%	3.0%	3.9%	3.9%	3.2%
Female	2.1%	2.3%	2.3%	3.4%	3.2%	2.6%

Source: Montana Statewide Graduate and Dropout Report, 2008 - 2009 School Year

## 2009 Youth Risk Behavior Survey - Percentage of Respondents

		1995	1997	1999	2001	2003	2005	2007	2009
Drove when drinking alcohol during the past 30 days	U.S.	15.4	16.9	13.1	13.3	12.1	9.9	10.5	9.7
	Montana	27.4	26.7	22.7	21.8	20.4	18.5	16.0	13.5
Rode with a driver who had been drinking alcohol during the past 30 days	U.S.	38.8	36.6	33.1	30.7	30.2	28.5	29.1	28.3
	Montana	48.1	46.6	43.1	39.3	36.9	34.4	32.9	28.8
Carried a weapon (gun, knife, or club) during the past 30 days	U.S.	20.0	18.3	17.3	17.4	17.1	18.5	18.0	17.5
	Montana	22.6	23.8	20.3	21.4	19.4	21.4	22.1	23.0
Current cigarette use (smoked cigarettes during the past 30 days)	U.S.	34.8	36.4	34.8	28.5	21.9	23.0	20.0	19.5
	Montana	34.8	38.1	35.0	28.5	22.9	20.1	20.0	18.7
Current alcohol use (drank alcohol during the past 30 days)	U.S.	51.6	50.8	50.0	47.1	44.9	43.3	44.7	41.8
	Montana	58.2	59.0	57.6	54.1	49.5	48.6	46.5	42.8
Binge drinking (5 or more drinks within a couple hours during the past 30 days)	U.S.	32.6	33.4	31.5	29.9	28.3	25.5	26.0	24.2
	Montana	43.1	44.4	43.6	41.4	37.3	34.4	32.7	30.1
Current marijuana use (used marijuana during the past 30 days)	U.S.	25.3	26.2	26.7	23.9	22.4	20.2	19.7	20.8
	Montana	20.1	26.9	25.5	27.1	23.1	22.3	21.0	23.1
Ever had sexual intercourse	U.S.	53.1	48.4	49.9	45.6	46.7	46.8	47.8	46.0
	Montana	47.0	45.9	42.5	43.9	43.6	43.6	45.7	47.6
Attempted suicide during the past 12 months	U.S.	8.7	7.7	8.3	8.8	8.5	8.4	6.9	6.3
	Montana	8.5	8.4	6.7	10.4	9.7	10.3	7.9	7.7

Source: U.S. Census Bureau

## National Assessment of Education (NAEP) Progress Historical Performance in Montana Schools

Subject	Grade	Year	State Average	National Average	
Mathematics (scale: 0-500)	4	1996 <sup>n</sup>	228	222	
		2003	236	234	
		2005	241	237	
	8	2007	244	239	
		2009	244	239	
		1990 <sup>n</sup>	280	262	
		1996 <sup>n</sup>	283	271	
		2003	286	276	
		2005	286	278	
Reading (scale: 0-500)	4	1994 <sup>n</sup>	222	212	
		1998	225	213	
		2003	223	216	
	8	2005	225	217	
		2007	227	220	
		2009	225	220	
		1998	271	261	
		2003	270	261	
		2005	269	260	
Science (scale: 0-300)	4	2000	160	145	
		2005	160	149	
		1996 <sup>n</sup>	162	148	
	8	2000	164	148	
		2005	162	147	
		2007	157	154	
	Writing (scale: 0-300)	4	2002	149	153
			1998	150	148
		8	2002	152	152
2007			157	154	

<sup>n</sup> Accommodations were not permitted for this assessment

Source: National Center for Education Statistics



# Libraries

There are 761 libraries in Montana. Senate and House district figures in the table below show the number of libraries located in cities within 10 miles of the district's boundaries. For more detailed information on Montana's libraries visit [http://www.msl.mt.gov/For\\_Librarians/Library\\_Directory/](http://www.msl.mt.gov/For_Librarians/Library_Directory/).

Source: *Montana State Library, November 2010*

	Montana	Senate District 23	House District 45	House District 46
Public	81	5	3	2
Branches	31	1	0	1
Bookmobiles	3	1	0	1
School	562	76	22	54
Academic	28	4	1	3
Special or Other	56	8	0	8
<b>Total</b>	<b>761</b>	<b>96</b>	<b>26</b>	<b>69</b>

## Montana Talking Book Library

### Services for Blind or Disabled Montanans

- In 2009-2010, our 5 employees and 100 volunteers provided FREE specialized library services, via mail or download, by circulating 259,382 books and materials to 4,173 blind or disabled Montana veterans and residents of all ages. Since 2009, we served an additional 1,097 more patrons - a 28% increase.
- Our patrons benefit from a variety of access options: the newest easy-to-use, accessible digital book program; free digital talking book machines delivered to patrons' homes; free eLibrary with 20,000 books to download; 63,000 additional book titles and 80 periodicals for loan in one or more formats; access to radio or phone newspaper services.
- Our Montana Recording Program has produced over 1,000 Montana books for all ages.
- Our Montana Braille /Twin Vision Program has produced over 442 books for Montana children.
- Special funding from the 2009 Legislature successfully provided patrons of MONTANA AUDIO Information Network (formerly Montana Radio Reading Service) and Montana Association for the Blind with improved access and expanded newspaper resources.



### For more information:

<http://msl.mt.gov/tbl/> OR 1-800-332-3400

Senate and House district figures in the table below show the number of patrons located in cities within 10 miles of the district's boundaries.

	Montana	Senate District 23	House District 45	House District 46
Total Patrons	4,173	622	126	526
Veterans Who Are Patrons	409	45	7	39
Patron Count by Disability				
Blindness	1,212	141	28	121
Low Vision	2,129	362	52	322
Physical	350	66	21	47
Reading	482	53	25	36

Source: *Montana Talking Book Library*

## Montana Public Libraries Fast Facts

- Montana's public libraries hold 3,348,859 items.
- Montanans visited their public libraries an average of five times throughout the year, for a total of 4,429,464 visits in 2009.
- Montana library patrons checked out 6,244,116 items in 2009, about seven items per person.
- Librarians in Montana's public libraries fielded 428,844 reference questions in SFY 2009, or 8,247 questions per week.
- 100% of all Montana libraries provide Internet access to patrons
- Nearly half of all Montanans (442,311) have a library card.

## Montana Shared Catalog Statistics

The Montana Shared Catalog helps Montana libraries meet today's library users demands. It gives Montanans a rich and easy-to-use catalog including more than 3.3 million items which patrons circulated 4,178,877 times in SFY 2010. Additional groups that partner to share their catalogs include the 4 Rivers, BridgerNet, and Partners groups. Senate and House district figures below show the number of libraries located in cities within 10 miles of the district's boundaries.



*Havre-Hill County library director, Bonnie Williamson, using the Montana Shared Catalog system to check out a book to a patron.*

## Montana Shared Catalog Senate District 23 Public and Branch Libraries

Community Library 3803 Central Ave at MSU-B COT Campus, *Billings*  
 Laurel Public Library, *Laurel*  
 Miles City Public Library, *Miles City*  
 Parmly Billings Library, *Billings*  
 Rosebud County Library, *Forsyth*  
 Roundup School-Community Library, *Roundup*

	Montana	Senate District 23	House District 45	House District 46
Participating Libraries	132	16	5	11
Patrons	364,554	62,899	7,720	55,179
Items	3,325,517	532,736	129,818	402,918
Partner Group Libraries	28	6	6	0

## Statewide Library Training

The Montana State Library's consultants travel throughout Montana and meet one-on-one with librarians and library trustees across the state, assisting with everything from training and technology to applying Montana library law and fundraising basics. In the last fiscal year, MSL's consultants traveled over 60,000 miles, made over 2,000 contacts and completed over 400 visits with Montana's library community.

Total Attendees	1,321
Number of Workshops	113
Number of different Montana locations	63

Time period: January 2009 - December 2010

Source: *Montana State Library*



# Statewide Library Resources

The Montana State Library works on behalf of all Montana libraries to help them provide the latest and best information and library services to their patrons – your constituents. We negotiate on behalf of libraries across the state to get the best rate on cutting-edge library products and services, on which many Montanans depend for everything from making health care decisions to finding a job. Examples include our statewide contract with OCLC, a worldwide consortium of libraries dedicated to providing top-notch library services and a subscription to the genealogy database, HeritageQuest which is available to all public libraries in the state. Without statewide library projects, some of which are listed here, many Montanans would be left behind in this age of information.

## Statewide Databases

Thanks to an allocation from the Montana legislature, the Montana State Library offers statewide databases to all Montana library patrons. Access to this completely online collection – accessible in the library, at home, or on a mobile device – includes hundreds of databases and thousands of full text articles on everything from business resources to health information.

## Ready 2 Read

The Montana State Library's Ready 2 Read program is designed to help parents and caregivers understand the value of sharing language and literacy with their children and the importance these skills play throughout a person's life. So far, 45 libraries have received extensive early childhood training and a large number of materials to serve Montana's youngest library patrons; additionally these 45 libraries now offer programming just for children ages 0 – 3.



<http://ready2readmontana.org/>

## Courier Pilot Project

As access to quality information has become a vital part of our lives, the Montana State Library is working on a number of ways for libraries to share information and materials affordably and dependably. One of these methods is the Montana Courier Project, which uses a commercial courier service to ship library materials and resources around the state. As the pilot participation has grown, participating libraries are seeing increasingly significant savings in the cost of moving library materials around the state.

## Participating Libraries

Senate and House district figures in the table below show the number of libraries located in cities within 10 miles of the district's boundaries.

	Montana	Senate District 23	House District 45	House District 46
Statewide Databases	762	91	26	70
OCLC	250	47	6	41
Courier Project	34	0	0	0
MontanaLibrary2Go	48	3	2	1
HeritageQuest	86	5	3	2
Montana Memory Project	15	5	2	3

Source: *Montana State Library*

## Montana's Cultural Heritage

In partnership with the Montana Historical Society and other partners, the Montana State Library helps to ensure that Montanans have ready access to our Montana cultural heritage. The Montana Memory Project provides online access to digitized copies of historic as well as contemporary material that serve as a resource for education, business, pleasure, and lifelong learning. <http://mtmemory.org/>



*First train from St. Paul, over the last spike en-route to Portland, OR. September 8, 1883*  
*Montana Historical Society Photo Archives*  
*Montana Memory Project*

Additionally, the Montana State Library launched the online companion to the Montana Historical Society's *Montana Place Names: From Alzada to Zortman*. This web mapping application makes discoverable the history of more than 1,200 Montana place names and includes all the photos and descriptions found in the book. <http://mtplacenames.org/>

## State Publications Available Online!

The Montana State Library is digitizing our legacy print state publications collection of 55,000 publications dating to 1874. To date, nearly one million pages have been digitized. All of these publications are available online in a variety of formats at <http://statepublications.mt.gov>. Use of these items is 250 times more frequent than traditional print.

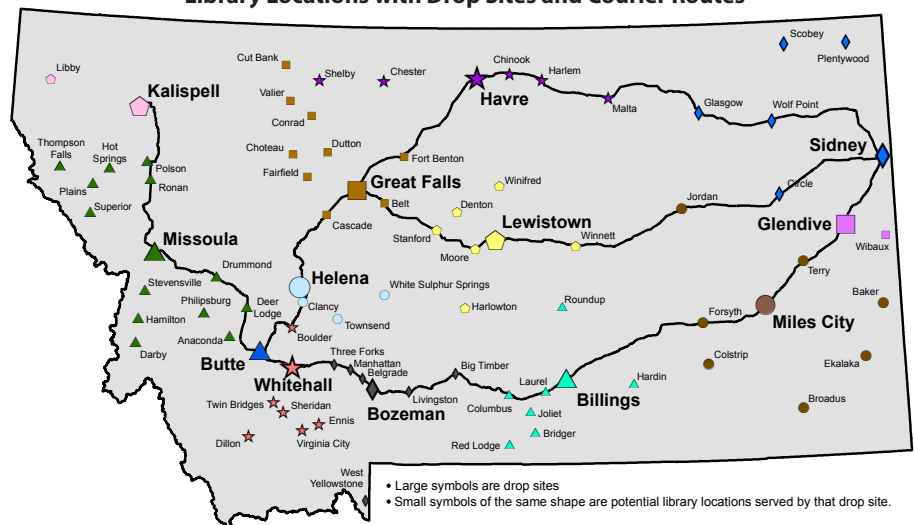
## Montana Library 2 Go

Montana library patrons are reading more books on mobile devices than ever before and Montana libraries are delivering the goods with Montana Library 2 Go, a collection of downloadable audio and E-book titles to patrons of participating libraries. Titles are available for download on MP3 players, iPods, iPads and other playing and reading devices.

## GIS Portal

Funded by the 2007 Legislature and first launched in 2008, the Montana GIS Portal serves as Montana's primary online resource to discover geospatial data. The Portal provides online access to hundreds of datasets in a variety of formats for use in maps, web mapping applications and geospatial analyses. <http://gisportal.msl.mt.gov/>

## Montana Library Courier/Delivery Service Pilot Library Locations with Drop Sites and Courier Routes



• Large symbols are drop sites  
 • Small symbols of the same shape are potential library locations served by that drop site.

Source: *Montana State Library, December 2010*

# Land

## Land Ownership

Senate District 23 ranks number 8 in size and is 6,219.853 square miles, or about 4% of Montana's total land area (146,923.321 square miles). The average senate district in Montana is 2,938 square miles and the average house district is 1,469 square miles.

Owner	Montana		Senate District 23		House District 45		House District 46	
	Area (Sq Mi)	%	Area (Sq Mi)	%	Area (Sq Mi)	%	Area (Sq Mi)	%
Private	95,738	65	5,250	84	4,759	84	492	90
Local Government	32	< 1	< 1	< 1	< 1	< 1	0	0
Montana Fish, Wildlife and Parks	470	< 1	< 1	< 1	< 1	< 1	< 1	< 1
State Trust Land	8,020	5	384	6	348	6	36	7
Other State Land	89	< 1	< 1	< 1	< 1	< 1	< 1	< 1
US Bureau of Land Management	12,451	8	537	9	522	9	15	3
US Fish and Wildlife Service	1,373	< 1	19	< 1	18	< 1	< 1	< 1
US Forest Service	26,317	18	< 1	< 1	< 1	< 1	0	0
US National Park Service	1,829	1	0	0	0	0	0	0
Other Federal Land	318	< 1	25	< 1	25	< 1	0	0
<b>Total</b>	<b>146,923</b>		<b>6,220</b>		<b>5,676</b>		<b>544</b>	

Source: Montana Natural Heritage Program, July 2010

## Private Land Agricultural Use

Owner	Montana		Senate District 23		House District 45		House District 46	
	Acres	%	Acres	%	Acres	%	Acres	%
Continuous Crop	25,468	< 1	0	0	0	0	0	0
Fallow Crop	13,281,791	16	393,807	9	283,920	7	109,887	25
Farmstead	0	0	0	0	0	0	0	0
Grazing	49,048,154	59	3,509,580	76	3,272,762	78	236,818	54
Irrigated	5,220,163	6	471,354	10	392,284	9	79,070	18
Timber	14,168,777	17	210,329	5	209,160	5	1,169	< 1
Wild Hay	1,097,282	1	36,149	< 1	26,425	< 1	9,723	2
<b>Total</b>	<b>82,841,635</b>		<b>4,621,219</b>		<b>4,184,552</b>		<b>436,668</b>	

Source: Montana Department of Administration Information Technology Services Division - Geographic Information Services, October 2010

## Conservation Easements (Acres)

	Montana	Senate District 23	House District 45	House District 46
	Bitter Root Land Trust	2,422	0	0
City Government	601	0	0	0
Clark Fork- Pend Oreille Conservancy	151	0	0	0
County Government	528	0	0	0
Ducks Unlimited (Wetlands America Trust)	16,979	0	0	0
Five Valleys Land Trust	37,763	0	0	0
Flathead Land Trust	8,054	0	0	0
Gallatin Valley Land Trust	36,149	0	0	0
Montana Department of Transportation	938	0	0	0
Montana Fish, Wildlife, and Parks	384,984	0	0	0
Montana Land Reliance	831,566	42,483	38,499	3,984
National Wildlife Federation	20	0	0	0
Prickly Pear Land Trust	3,246	0	0	0
Rattlesnake Land Trust	190	0	0	0
Rocky Mountain Elk Foundation	49,220	0	0	0
Salish and Kootenai Tribe	102	0	0	0
The Bighorn Institute	1,443	0	0	0
The Nature Conservancy	309,443	2,132	1,807	325
The Vital Ground Foundation	833	0	0	0
US Bureau of Reclamation	42	0	0	0
US Department of Agriculture	17,652	0	0	0
US Fish and Wildlife Service	232,456	0	0	0
US Forest Service	20,038	0	0	0
<b>Total</b>	<b>1,955,555</b>	<b>44,615</b>	<b>40,306</b>	<b>4,310</b>

Source: Montana Natural Heritage Program

## Montana Spatial Data Infrastructure

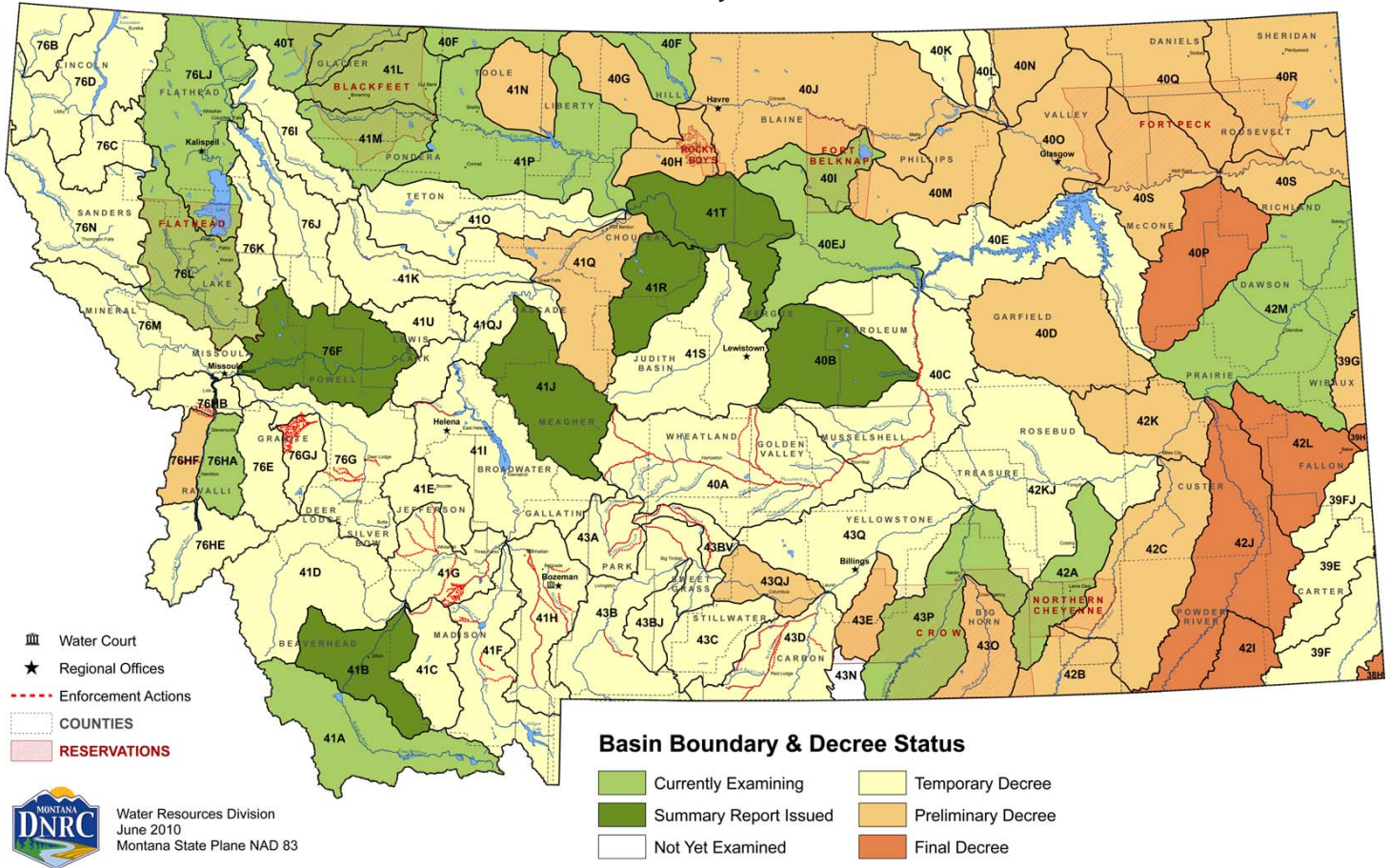
The Montana Spatial Data Infrastructure (MSDI) is a digital representation of Montana's physical and cultural landscape that allows the state to be mapped. Some of the individual components of the MSDI are roads, lakes and streams, land ownership, administrative boundaries, soils, land use, structures, aerial photographs, watersheds, wetlands, elevation, and geology.

This information is fast becoming a critical element for policy review at the state and local levels in both the public and private sectors. For more information see: <http://giscoordination.mt.gov/>.



The Department of Natural Resources and Conservation maintains a database of water rights to assist Montana citizens and the Montana Water Court in the water rights adjudication process. Visit their site at [http://dnrc.mt.gov/wrd/water\\_rights/](http://dnrc.mt.gov/wrd/water_rights/).

## Basin Location and Adjudication Status



## Dams in Senate District 23

There are 3,666 dams in the national inventory of dams for Montana. Predominant uses are stock/farm ponds (48%) and irrigation (22%). Additional dams not included in the inventory can be found by searching for water rights.

Source: *National Inventory of Dams, USGS Geographic Names Information System, September 2003*

Type	Montana	Senate District 23	House District 45	House District 46
Debris Control	1	0	0	0
Fish and Wildlife Pond	1	0	0	0
Flood Control	43	0	0	0
Hydroelectric	26	0	0	0
Irrigation	822	51	48	3
Recreation	54	0	0	0
Stock/Small Farm Pond	1,771	270	262	8
Tailings	8	0	0	0
Water Supply	44	0	0	0
Other	68	6	6	0
Unknown	828	37	36	1
<b>Total</b>	<b>3,666</b>	<b>364</b>	<b>352</b>	<b>12</b>

## Public Water Supplies

There are 3,266 public water supplies located in the State of Montana, 54 of which are located in Senate District 23. These figures do not include public water supplies serving Native American nations.

	Count
<b>House District 45</b>	
Public, community	9
Public, non-community, non-transient	6
Public, transient	19
<b>House District 46</b>	
Public, community	7
Public, non-community, non-transient	4
Public, transient	9

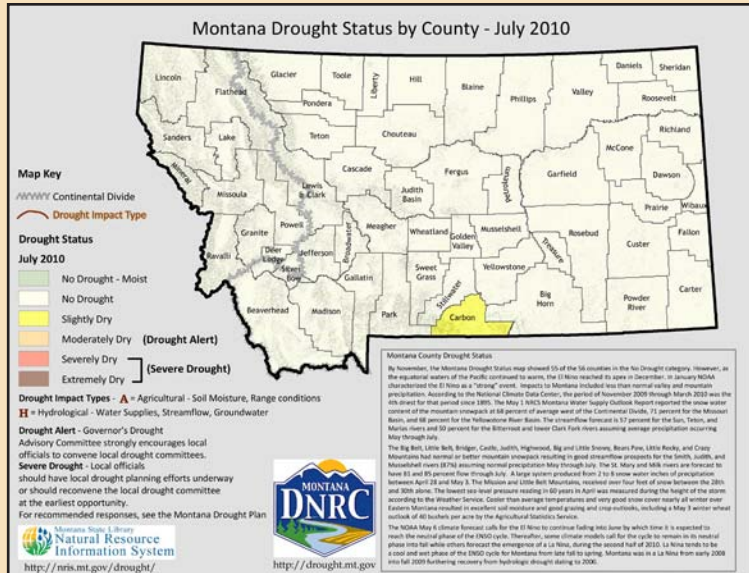
Source: *Department of Environmental Quality, December 2007*



## Montana Drought Resources

The Montana Governor's Drought Advisory Committee is charged with monitoring, forecasting, and reporting water supply and moisture conditions, enabling Montanans to make timely and informed decisions to mitigate drought impacts in a proactive manner.

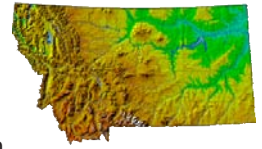
For up-to-date information and maps on Montana's current drought situation visit <http://drought.mt.gov/>.



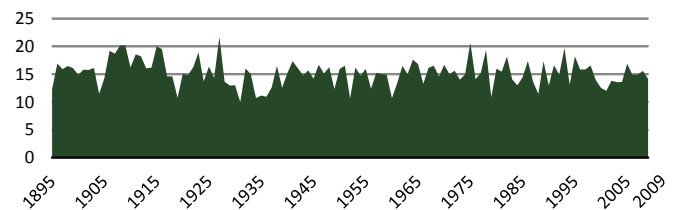
Source: Natural Resource Information System

## Montana Digital Atlas

Additional mapping and data capabilities are available through the Montana State Library at <http://nris.mt.gov/>. The Montana Digital Atlas provides unlimited access to detailed information on such issues as climate, environmental impacts, land information, water, and cultural data.



## Montana Annual Precipitation in Inches (1895 - 2009)



Source: NOAA Satellite and Information Service

## Montana Fires 2002 - 2008

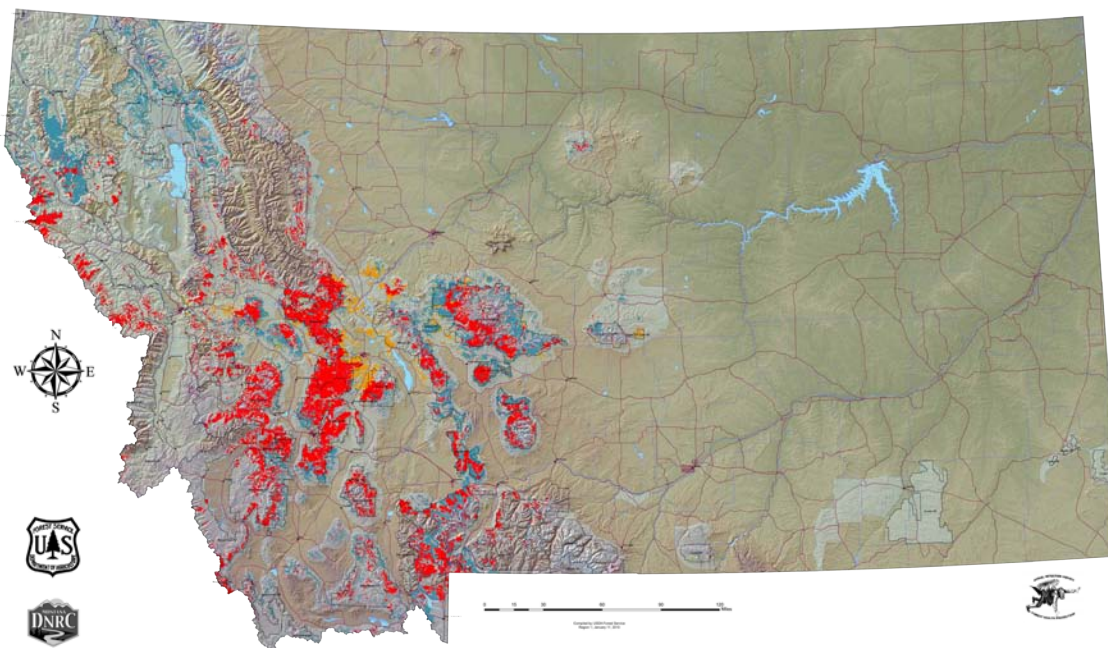
### All Fires As Reported by All Agencies

Year	Count	Acreage
2002	1,372	110,309
2003	2,326	736,809
2004	1,447	18,445
2005	1,316	103,294
2006	2,302	1,047,118
2007	1,875	778,079
2008	1,424	166,842

Source: Department of Natural Resources and Conservation

## 2009 Aerial Detection Survey Data - Insect and Disease Outbreaks in Montana

As Detected by Forest Health Protection's (FHP) Aerial Insect and Disease Detection Survey - USDA Forest Service.



- National Forest
- County Boundary
- Areas Surveyed
- Pest**
- Douglas Fir Beetle
- Subalpine Fir Mortality
- Mountain Pine Beetle in High Elevation 5-Needle Pines
- Western Spruce Budworm
- Mountain Pine Beetle in Ponderosa Pine
- Mountain Pine Beetle in Lodge Pole Pine
- Fir Engriaver

### \*\*Disclaimer\*\*

The sources of the digital map layer used to compile the base map upon which the insect and disease data are presented vary in both source and scale, therefore, accuracy is not guaranteed.

The insect and disease data should be used only as an indicator of insect and disease activity, and should be ground-truthed for actual location and causal agent. Polygons indicate locations of tree mortality, defoliation, and/or other damage. Intensity of damage is variable, and not all trees and areas indicated are dead or damaged. The joint cooperators reserve the right to correct, modify, update, or replace the data as necessary. Using this data for purposes other than those for which it was intended may yield inaccurate or misleading results.

## Oil and Gas Wells in Senate District 23

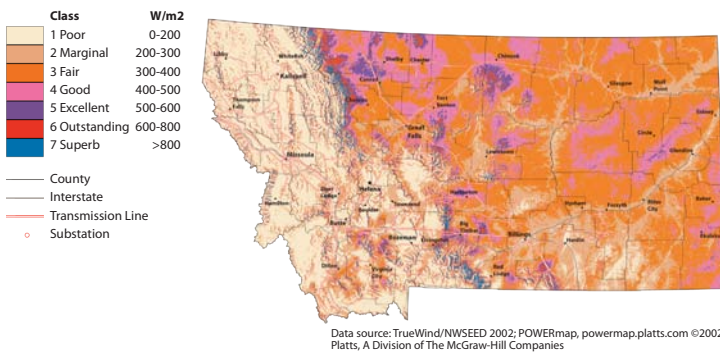
	Montana	Senate District 23	House District 45	House District 46
Coal Bed Methane, Active	1,117	0	0	0
Coal Bed Methane, Inactive	40	0	0	0
Gas, Active	7,351	31	29	2
Gas, Inactive	2,509	10	9	1
Gas Storage, Active	272	0	0	0
Gas Storage, Inactive	14	0	0	0
Injection, Active	1,109	90	90	0
Injection, Inactive	749	84	84	0
Oil, Active	7,230	280	278	2
Oil, Inactive	4,511	292	291	1
<b>Total</b>	<b>24,902</b>	<b>787</b>	<b>781</b>	<b>6</b>

Source: Montana Board of Oil and Gas Conservation, October 2008

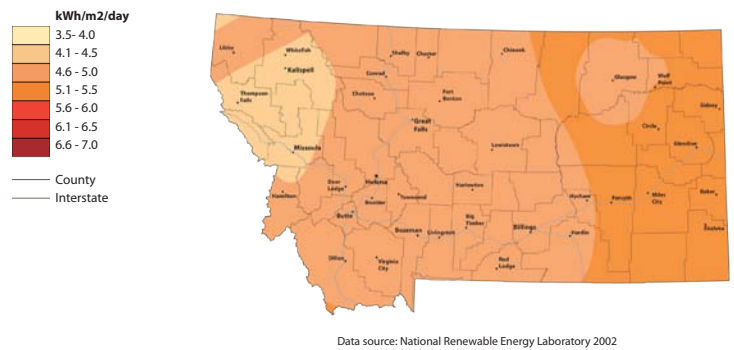
Additional information about oil and gas wells is available through the Board of Oil and Gas Conservation's WebMapper which can be accessed at <http://bogc.dnrc.mt.gov/>.

## Energy Atlas

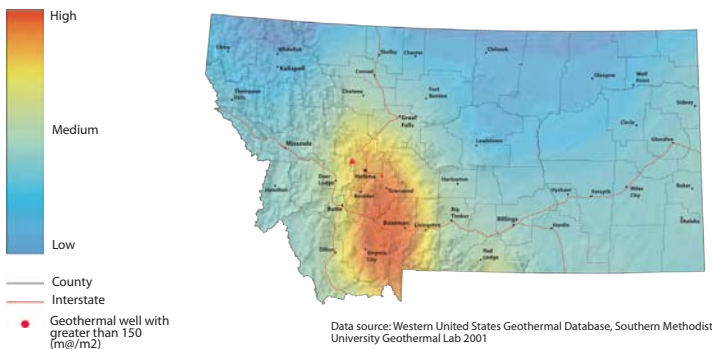
### Wind Power at 50 Meters - Wind Power Density



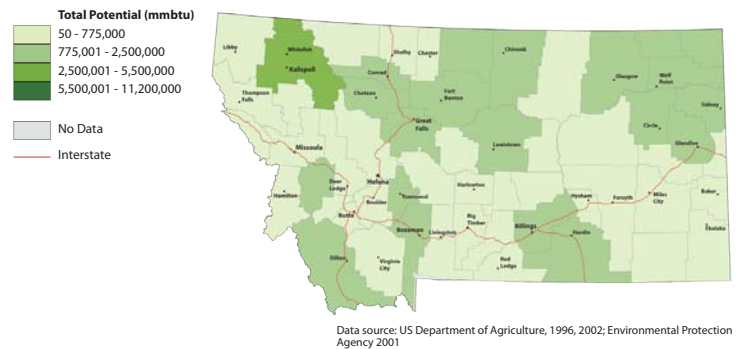
### Solar Insolation Annual Average



### Geothermal Potential



### Total Energy Potential from Biomass Residue



Find additional energy related data and maps at <http://www.energyatlas.org/>

## Pipelines in Senate District 23

	Montana		Senate District 23		House District 45		House District 46	
	Count	Miles	Count	Miles	Count	Miles	Count	Miles
Crude Oil	90	1,970	7	192	3	122	4	69
Natural Gas	360	3,301	0	0	0	0	0	0
Refined Product	47	805	2	45	1	25	1	20
Other	24	402	0	0	0	0	0	0
<b>Total</b>	<b>521</b>	<b>6,477</b>	<b>9</b>	<b>236</b>	<b>4</b>	<b>147</b>	<b>5</b>	<b>89</b>

Source: Pipeline Integrity Management Mapping Application, December 2006

## Abandoned Mines and Remediation Sites

	Abandoned Mines	Remediation Sites
Montana	6,954	765
Senate District 23	204	20
House District 45	197	12
House District 46	7	8

Source: Montana Department of Environmental Quality, November 2010

## Montana House Heating Fuel

Occupied housing units		100%
Utility gas	215,172	57.6%
Bottled, tank, or LP gas	49,291	13.2%
Electricity	66,504	17.8%
Fuel oil, kerosene, etc.	7,126	1.9%
Coal or coke	841	0.2%
Wood	29,473	7.9%
Solar energy	235	0.1%
Other fuel	4,064	1.1%
No fuel used	749	0.2%

Source: 2006-2008 American Community Survey 3-Year Estimates

# Wildlife and Recreation

## Species Diversity in Senate District 23

	Montana (Count)	Senate District 23 (Count)	% of Montana Species
Amphibians	13	8	62
Birds	328	267	81
Fish	81	54	67
Mammals	107	74	69
Reptiles	17	14	82

Source: Montana Natural Heritage Program

## Recreation Area (Acres)

	Senate District 23
Fishing Access Sites	171
Fishing Conservation Areas	0
State Parks	355
Wildlife Conservation Easements	0
Wildlife Protection Areas	0
Wildlife Management Areas	< 1
<b>Total</b>	<b>526</b>

Source: Montana Fish, Wildlife, and Parks

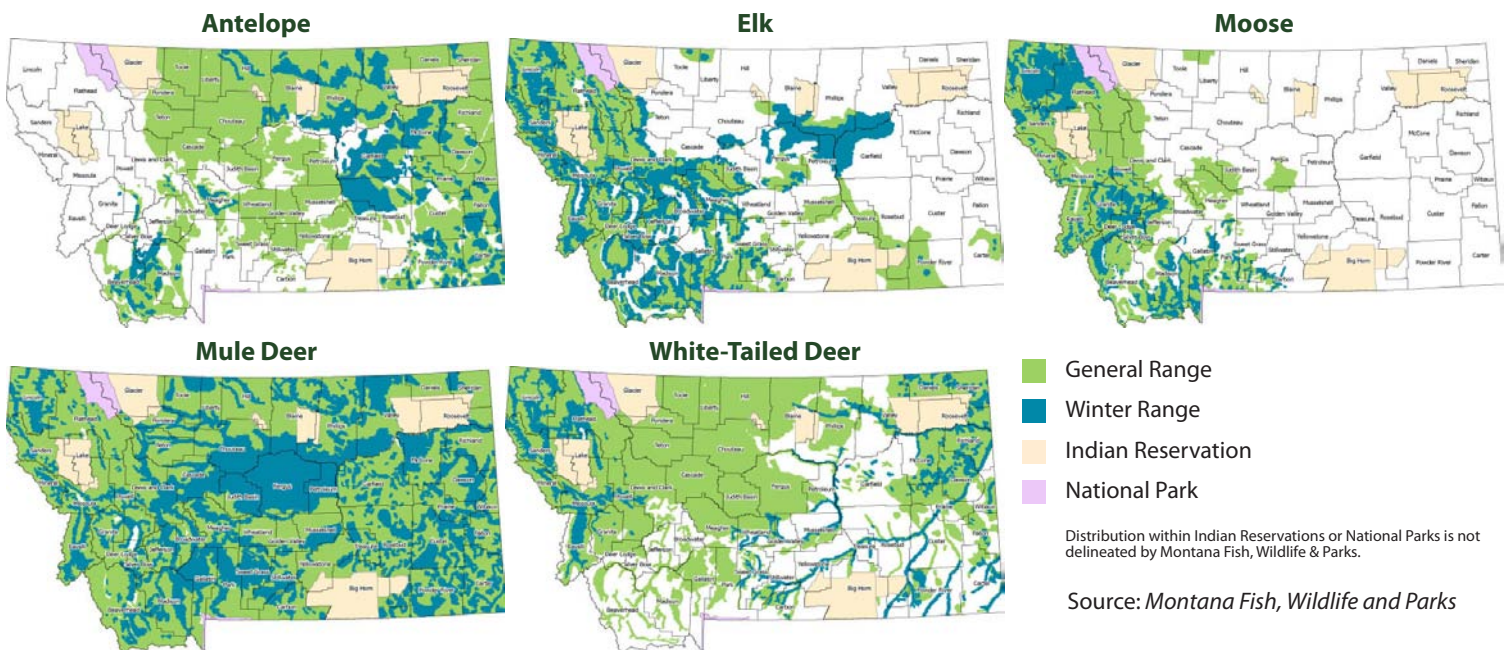
## Block Management Acreage

There are a total of 7,522,358 acres of Block Management land (excluding Plum Creek\*) in the State of Montana. 543,480.00 of those acres or 7% are located in Senate District 23.

\*Plum Creek land in FWP's Regions 1 and 2 are not included in these statistics. Although they are part of the Block Management Program, they are not traditional BMA's and are managed differently.

Source: Montana Fish, Wildlife and Parks

## Big Game Distribution



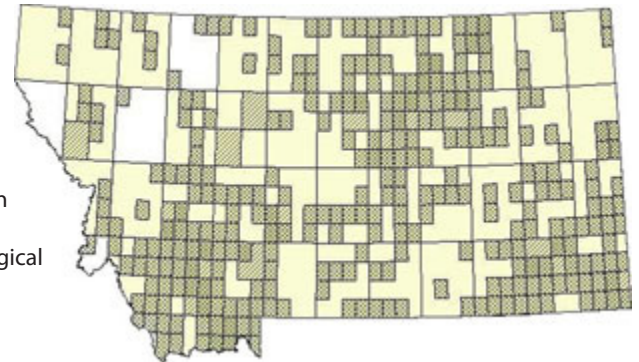
## Brewer's Sparros

*Spizella breweri*



The Brewer's Sparrow nests in sagebrush habitats across Montana where they forage for insects and seeds to support 3-4 young. During winter, individuals migrate to the southwestern United States and Mexico.

## Spizella breweri General Observations Range



Source: Montana Natural Heritage Program

Montana is blessed with a wealth of wildlife and habitat diversity. These resources provide exceptional opportunities for recreation and contribute substantially to the state's economy and quality of life.

## Wildlife Highlights

For more information on animals, plants, and habitats in your Senate District, visit the Montana Natural Heritage Program at <http://mtnhp.org>. Resources include:

- Montana Field Guide - an encyclopedia of the distribution, status, and biology of Montana's animals, plants, and biological communities
- Natural Heritage Tracker and Map Viewer – interactive maps of animals, plants, land cover, and land stewardship
- Land Stewardship Maps – public lands, conservation easements, and special designations
- Wetland and riparian mapping information
- Reports on Montana's Species of Concern
- Quick responses to data requests and answers from expert scientists on Montana's plants, animals, and biological communities.



# Senate District 23 Libraries and Digital Library Resources

## Public

### Bicentennial Library of Colstrip

MaryKay Bullard, Branch Librarian  
Rosebud County  
PO Box 1947 Colstrip, MT 59323  
(406) 748-3040  
Catalog: <http://mtscprod.msl.mt.gov/uhtbin/cgisirsi/x/0/0/49>  
*Montana Shared Catalog, MyMontanaLibrary2Go, HeritageQuest, Statewide Databases*



### Laurel Public Library

Nancy Schmidt, Library Director  
Yellowstone County  
PO Box 68 Laurel, MT 59044  
(406) 628-4961  
Web Site: <http://www.laurelpubliclibrary.org>  
Catalog: <http://mtscprod.msl.mt.gov/uhtbin/cgisirsi/x/0/0/49>  
*Montana Shared Catalog, OCLC, HeritageQuest, Statewide Databases*



### Miles City Public Library

Sonja Woods, Library Director  
Custer County  
One South Tenth Street Miles City, MT 59301  
(406) 234-1496  
Web Site: <http://www.milescitypubliclibrary.org>  
Catalog: <http://mtscprod.msl.mt.gov/uhtbin/cgisirsi/x/0/0/49>  
*Montana Shared Catalog, Partners Group, OCLC, MyMontanaLibrary2Go, HeritageQuest, Montana Memory Project Participant, Statewide Databases*

### Parmly Billings Library

Bill Cochran, Library Director  
Yellowstone County  
510 North Broadway Billings, MT 59101  
(406) 657-8258  
Web Site: <http://www.billings.lib.mt.us/>  
Catalog: <http://mtscprod.msl.mt.gov/uhtbin/cgisirsi/x/0/0/49>  
*Montana Shared Catalog, OCLC, MyMontanaLibrary2Go, HeritageQuest, Montana Memory Project Participant, Statewide Databases*



### Rosebud County Library

Cheryl Heser, Library Director  
Rosebud County  
PO Box 7 Forsyth, MT 59327  
(406) 346-7561  
Web Site: <http://sites.google.com/site/rosebudlib>  
Catalog: <http://mtscprod.msl.mt.gov/uhtbin/cgisirsi/x/0/0/49>  
*Montana Shared Catalog, OCLC, HeritageQuest, Statewide Databases*



### Roundup School-Community Library

Dale Alger, Library Director  
Musselshell County  
601 6th Ave West Roundup, MT 59072  
(406) 323-1802  
*Montana Shared Catalog, OCLC, HeritageQuest, Statewide Databases*

## Academic

### Dr. John Woodenlegs Memorial Library

Joan Hantz, Library Director  
Rosebud County  
PO Box 98 Lame Deer, MT 59043  
(406) 477-8293  
Web Site: <http://www.cdkc.edu>  
Catalog: <http://isbn.lib.montana.edu/uhtbin/cgisirsi/x/0/0/49>  
*OMNI System, OCLC, Statewide Databases*

### Ida Owen Dockery Library

Andrea Todd, Library Director  
Yellowstone County  
1515 Shiloh Road Billings, MT 59106  
(406) 656-9950  
*OCLC, Statewide Databases*



### Judson H. Flower Jr. Library

Ann Rutherford, Library Director  
Custer County  
2715 Dickinson Street Miles City, MT 59301  
(406) 874-6105  
Web Site: <http://mccolinreference.pbworks.com/>  
Catalog: <http://mtscprod.msl.mt.gov/uhtbin/cgisirsi/x/0/0/49>  
*Montana Shared Catalog, Partners Group, OCLC, MyMontanaLibrary2Go, Montana Memory Project Participant, Statewide Databases*

### Paul M. Adams Memorial Library

Bill Kehler, Library Director  
Yellowstone County  
Billings, MT 59102  
(406) 657-1087  
Web Site: <http://library.rocky.edu>  
Catalog: <http://isbn.lib.montana.edu/uhtbin/cgisirsi/x/0/0/49>  
*OMNI System, OCLC, Montana Memory Project Participant, Statewide Databases*

## Bookmobile

### Parmly Billings Library Bookmobile

Bill Cochran, Library Director  
Yellowstone County  
510 North Broadway Billings, MT 59101  
(406) 657-8257  
Web Site: <http://www.billings.lib.mt.us/>  
Catalog: <http://mtscprod.msl.mt.gov/uhtbin/cgisirsi/x/0/0/49>  
*Montana Shared Catalog, OCLC, Statewide Databases*

## Institutional

### Montana Women's Prison

Associate Warden, Library Director  
Yellowstone County  
701 South 27th Billings, MT 59101  
(406) 247-5100  
*Statewide Databases*

## School

### Alkali Creek Elementary School

Andrea Meyer, Librarian  
Yellowstone County  
681 Alkali Creek Rd Billings, MT 59105  
(406) 281-6847  
Web Site: <http://library.billings.k12.mt.us/alkalicreek.library.html>  
Catalog: <http://isbn.lib.montana.edu/uhtbin/cgisirsi/x/0/0/49>  
*Billings Schools, OCLC, Statewide Databases*

**Arrowhead Elementary School**

Mari Jane Orner, School Librarian  
Yellowstone County  
2510 38th St W Billings, MT 59102  
(406) 281-6408  
*Billings Schools, OCLC, Statewide Databases*

**Ashland Public School**

Laura Meza, School Librarian  
Rosebud County  
PO Box 17 Ashland, MT 59003  
(406) 784-2568  
*Montana Shared Catalog, OCLC, Statewide Databases*

**Beartooth Elementary School**

Audrey O'Brien, School Librarian  
Yellowstone County  
1345 Elaine Street Billings, MT 59105  
(406) 294-0550  
*Billings Schools, OCLC, Statewide Databases*

**Bench Elementary School**

Margot LaFontaine, School Librarian  
Yellowstone County  
505 Milton Rd Billings, MT 59105  
(406) 281-6320  
Web Site: <http://www.billings.k12.mt.us/>  
*Billings Schools, OCLC, Statewide Databases*

**Big Sky Elementary School**

Sharon Drake, School Librarian  
Yellowstone County  
3231 Granger Ave E Billings, MT 59102  
(406) 655-3115  
*Billings Schools, OCLC, Statewide Databases*

**Billings Career Education Center**

Denise Grewell, Media Specialist  
Yellowstone County  
3723 Central Avenue Billings, MT 59102  
(406) 281-5345  
Web Site: <http://bcc.billings.k12.mt.us/library/index.html>  
Catalog: <http://library.billings.k12.mt.us/uhtbin/cgiirsi/Wed+Oct++3+14&#058;29&#058;33+MDT+2001/0/49>  
*Billings Schools, OCLC, Statewide Databases*

**Billings Central Catholic****High School Library**

Jane Ray, Library Media Specialist  
Yellowstone County  
3 Broadwater Ave Billings, MT 59101  
(406) 245-6651  
Web Site: <http://www.billingscatholicsschools.org>  
*Montana Shared Catalog, OCLC, Statewide Databases*

**Billings Public School Libraries (SD#2)**

Peggy Smith, Librarian  
Yellowstone County  
415 N 30th Street Billings, MT 59101  
(406) 247-3790  
Web Site: <http://www.billings.k12.mt.us/>  
Catalog: <http://library.billings.k12.mt.us/uhtbin/cgiirsi/Wed+Oct++3+14:29:33+MDT+2001/0/49>  
*OCLC, Statewide Databases*

**Billings Senior High School**

Lyn McKinney, School Librarian  
Yellowstone County  
425 Grand Ave Billings, MT 59101  
(406) 281-5442  
Web Site: <http://www.billings.k12.mt.us/>  
Catalog: <http://senior.billings.k12.mt.us/senior/library/index.php>  
*Billings Schools, OCLC, Statewide Databases*

**Billings West High School**

Kathrine Field, School Librarian  
Yellowstone County  
2201 St Johns Ave Billings, MT 59102  
(406) 281-5753  
Web Site: <http://www.billings.k12.mt.us/>  
Catalog: <http://library.billings.k12.mt.us/uhtbin/cgiirsi/Wed+Oct++3+14&#058;29&#058;33+MDT+2001/0/49>  
*Billings Schools, OCLC, Statewide Databases*

**Birney Elementary**

Joan Malmquist, School Librarian  
Rosebud County  
PO Box 521 Birney, MT 59012  
(406) 984-6247  
*OCLC, Statewide Databases*

**Bitterroot Elementary School**

Kathi Hoyt, School Librarian  
Yellowstone County  
1801 Bench Blvd Billings, MT 59105  
(406) 255-3825  
*Billings Schools, OCLC, Statewide Databases*

**Blue Creek School Library**

Deedee Grubbs, Library Elementary Staff Member  
Yellowstone County  
3652 Blue Creek Rd Billings, MT 59101  
(406) 259-0653  
Web Site: <http://www.bluecreek.k12.mt.us/>  
*OCLC, Statewide Databases*

**Boulder Elementary School**

Roberta Fuller, School Librarian  
Yellowstone County  
2202 32nd St W Billings, MT 59102  
(406) 281-6621  
Web Site: <http://www.billings.k12.mt.us/>  
*Billings Schools, OCLC, Statewide Databases*

**Broadview Public Schools**

Gail Erickson, School Librarian  
Yellowstone County  
PO Box 147 Broadview, MT 59015  
(406) 667-2337  
*OCLC, Statewide Databases*

**Broadwater Elementary School**

Don Casey, School Librarian  
Yellowstone County  
Billings, MT 59102  
(406) 281-6437  
Web Site: <http://billings.k12.mt.us/bwater>  
Catalog: <http://library.billings.k12.mt.us/uhtbin/webcat>  
*Billings Schools, OCLC, Statewide Databases*

**Burlington Elementary School**

Kathi Hoyt, School Librarian  
Yellowstone County  
2135 Lewis Ave Billings, MT 59102  
(406) 655-3119  
*Billings Schools, OCLC, Statewide Databases*

**Canyon Creek School**

Sandra Pena, Librarian  
Yellowstone County  
3139 Duck Creek Rd Billings, MT 59101  
(406) 656-4471  
*OCLC, Statewide Databases*

**Castle Rock Middle School**

Karin Green, School Librarian  
Yellowstone County  
1441 Governors Blvd Billings, MT 59105  
(406) 237-6641  
Web Site: <http://www.billings.k12.mt.us/>  
*Billings Schools, OCLC, Statewide Databases*

**Central Heights Elementary School**

Rita Evans, School Librarian  
Yellowstone County  
120 Lexington Billings, MT 59102  
(406) 655-3121  
*Billings Schools, OCLC, Statewide Databases*

**Colstrip High School**

Susan DeJarnett, School Librarian  
Rosebud County  
PO Box 159 Colstrip, MT 59323  
(406) 748-4699  
*OCLC, Statewide Databases*

**Cottonwood Elementary**

Jeannie Sommerville, Supervising Teacher/Librarian  
Custer County  
HC 80 Box 18 Ismay, MT 59336  
*Statewide Databases*

**Custer County District High School Library**

Myra Annalora, School Librarian  
Custer County  
421 North Tenth Street Miles City, MT 59301  
(406) 234-4920  
*OCLC, Statewide Databases*

**Custer Public Schools**

Sheryl Stout, School Librarian  
Yellowstone County  
PO Box 69 Custer, MT 59024  
(406) 856-4117  
*OCLC, Statewide Databases*

**Eagle Cliffs Elementary School**

Janet Cole, School Librarian  
Yellowstone County  
1201 Kootenai Billings, MT 59105  
(406) 255-3840  
*Billings Schools, OCLC, Statewide Databases*

**Edgar Elementary**

Becki Ames, School Librarian  
Yellowstone County  
320 Nubias Place Billings, MT 59105  
(406) 962-3636  
*OCLC, Statewide Databases*

**Elder Grove School Library**

Ann Gunderson, Media Specialist  
Yellowstone County  
Billings, MT 59106  
(406) 656-2893  
Web Site: <http://www.eldergrove.k12.mt.us>  
*OCLC, Statewide Databases*

**Elysian School**

Carol Drum, School Librarian  
Yellowstone County  
6416 Elysian Rd Billings, MT 59101  
(406) 656-4101  
*OCLC, Statewide Databases*

**Forsyth Public Schools**

Carole Sweedland, Librarian  
Rosebud County  
PO Box 319 Forsyth, MT 59327  
(406) 346-2796  
*OCLC, Statewide Databases*

**Frank Brattin Middle School**

Donna McCulloch, Library Aide  
Rosebud County  
PO Box 159 Colstrip, MT 59323  
(406) 748-4699  
*OCLC, Statewide Databases*

**Garfield Elementary School**

Jonette Doeden, Youth Services Librarian  
Custer County  
1604 Main Street Miles City, MT 59301  
(406) 234-4310  
*OCLC, Statewide Databases*

**Garfield Elementary School**

Audrey O'Brien, School Librarian  
Yellowstone County  
3212 1st Ave S Billings, MT 59101  
(406) 255-3843  
*Billings Schools, Statewide Databases*

**Helen L. Bekken Library**

Donna Petriccione, School Librarian  
Yellowstone County  
205 N 32nd Street Billings, MT 59101  
(406) 259-5037  
*OCLC, Statewide Databases*

**Highland Elementary School**

Ann Walters, School Librarian  
Yellowstone County  
729 Parkhill Drive Billings, MT 59102  
(406) 281-6270  
*Billings Schools, OCLC, Statewide Databases*

**Highland Park Elementary**

Joan Ameline, School Librarian  
Custer County  
1604 Main St Miles City, MT 59301  
(406) 234-3890  
*OCLC, Statewide Databases*

**Huntley Project School K-6**

Bonnie Ortner, School Librarian  
Yellowstone County  
1477 Ash St Worden, MT 59088  
(406) 967-2540  
*OCLC, Statewide Databases*

**Huntley Project Schools**

Bonnie Ortner, School Librarian  
Yellowstone County  
1477 Ash St Worden, MT 59088  
(406) 957-2540  
*OCLC, Statewide Databases*

**IMC/Billings Public Schools**

Nina Jackson, Library System Services Coord  
Yellowstone County  
1470 Industrial Avenue Billings, MT 59101  
(406) 869-3915  
*OCLC, Statewide Databases*

**Independent Elementary School**

Nicky Wolf, School Librarian  
Yellowstone County  
2907 Roundup Rd Billings, MT 59105  
(406) 259-8109  
*OCLC, Statewide Databases*

**Kinsey Elementary School**

Rene Torgerson, School Librarian  
Custer County  
General Delivery Kinsey, MT 59338  
(406) 232-3111  
*OCLC, Statewide Databases*

**Kircher Elementary**

Jennifer Beardsley, School Clerk  
Custer County  
Box 2353 Miles City, MT 59301  
(406) 232-6584  
*OCLC, Statewide Databases*

**Lame Deer Jr./Sr. High School Library**

Ann Taylor, Library Specialist  
Rosebud County  
PO Box 96 Lame Deer, MT 59043  
(406) 477-8900  
*OCLC, Statewide Databases*

**Lame Deer Elementary School Library**

Marilyn Mader, School Librarian  
Rosebud County  
PO Box 96 Lame Deer, MT 59043  
(406) 477-6305  
*OCLC, Statewide Databases*

**Lame Deer Jr./Sr. High School Library**

Ann Taylor, School Librarian  
Rosebud County  
PO Box 96 Lame Deer, MT 59043  
(406) 477-8900  
*OCLC, Statewide Databases*

**Laurel High School**

Jamie McCauley, Academy Director  
Yellowstone County  
203 E 8th St Laurel, MT 59044  
(406) 628-7911  
Web Site: <http://www.laurel.k12.mt.us/>  
*OCLC, Statewide Databases*

**Laurel Middle School**

Anne Easton, School Librarian  
Yellowstone County  
725 Washington Avenue Laurel, MT 59044  
(406) 628-3933  
*OCLC, Statewide Databases*

**Lewis and Clark Middle School**

Elizabeth Waddington, Library Media Specialist  
Yellowstone County  
1315 Lewis Avenue Billings, MT 59102  
(406) 281-5916  
Web Site: <https://sites.google.com/a/billings-schools.org/lewis-clark-middle-school-library/>  
Catalog: <http://058://library.billings.k12.mt.us>  
*Billings Schools, OCLC, Statewide Databases*

**Lincoln Elementary School**

Christy Ivanish, School Librarian  
Custer County  
1604 Main Street Miles City, MT 59301  
(406) 234-1697  
*OCLC, Statewide Databases*

**Lockwood Intermediate Library**

Teresa Marchant, School Librarian  
Yellowstone County  
1932 US Highway 87 East Lockwood, MT 59101  
(406) 248-3239  
Web Site: <https://058://sites.google.com/a/lockwoodschool.org/intlib/>  
*OCLC, Statewide Databases*

**Lockwood Middle School Library**

Johanna Freivalds, School Librarian  
Yellowstone County  
1932 US Highway 87 East Lockwood, MT 59101  
(406) 867-6215  
Web Site: <http://058://www.lockwoodschool.org/library/freivaldswebpagenew/homepage.html>  
*OCLC, Statewide Databases*

**Lockwood Primary School Library**

Kristi Laib, School Librarian  
Yellowstone County  
1932 US Highway 87 East Lockwood, MT 59101  
(406) 252-2776  
Web Site: <https://058://sites.google.com/site/lockwoodprimarylibrary/>  
*Statewide Databases*

**McKinley Elementary School**

Janet Cole, School Librarian  
Yellowstone County  
820 N 31st St Billings, MT 59101  
(406) 255-3853  
Web Site: <http://www.billings.k12.mt.us>  
*Billings Schools, OCLC, Statewide Databases*

**Meadowlark Elementary School**

Ginny Waples, School Librarian  
Yellowstone County  
221 29th St W Billings, MT 59102  
(406) 655-3133  
Catalog: <http://library.billings.k12.mt.us>  
*Billings Schools, OCLC, Statewide Databases*

**Melstone School Library**

Kelly Haaland, School Superintendent  
Musselshell County  
PO Box 97 Melstone, MT 59054  
(406) 358-2352  
*OCLC, Statewide Databases*

**Miles Avenue Elementary School**

Ruth Ferris, School Library Media Specialist  
Yellowstone County  
1601 Miles Ave Billings, MT 59102  
(406) 281-6214  
*Billings Schools, OCLC, Statewide Databases*

**Moon Creek Elementary**

Janette Erickson, Supervising Teacher/Librarian  
Custer County  
PO Box 1262 Miles City, MT 59301  
(406) 421-5545  
*Statewide Databases*

**Morin Elementary**

Tia Schacht, Supervising Teacher/Librarian  
Yellowstone County  
8824 Pryor Rd Billings, MT 59101  
(406) 259-6093  
*OCLC, Statewide Databases*

**Musselshell Elementary**

Lark Hanson, Supervising Teacher/Librarian  
Musselshell County  
PO Box 198 Musselshell, MT 59059  
(406) 947-2351  
*Statewide Databases*

**Newman Elementary School**

Preston Liz (Elizabeth), School Librarian  
Yellowstone County  
605 S Billings Blvd Billings, MT 59101  
(406) 255-3862  
*Billings Schools, OCLC, Statewide Databases*

**Orchard Elementary School**

Andrea Meyer, School Librarian  
Yellowstone County  
120 Jackson St Billings, MT 59101  
(406) 255-3867  
*Billings Schools, OCLC, Statewide Databases*

**Pine Butte Elementary School**

Becky Miller, Librarian  
Rosebud County  
PO Box 159 Colstrip, MT 59323  
(406) 748-4699  
*OCLC, Statewide Databases*

**Pine Hills School Library**

Rebecca Schmidt, School Librarian  
Custer County  
4 N Haynes Ave Miles City, MT 59301  
(406) 233-2216  
Catalog: <http://mtscprod.msl.mt.gov/uhtbin/cgisirsi/x/0/0/49>  
*Montana Shared Catalog, OCLC, Statewide Databases*

**Pioneer Elementary School**

Connie Russell, School Librarian  
Yellowstone County  
1937 Dover Road Billings, MT 59105  
(406) 373-5649  
*OCLC, Statewide Databases*

**Poly Drive Elementary School**

Kelli Delaney, School Librarian  
Yellowstone County  
2410 Poly Drive Billings, MT 59102  
(406) 281-6562  
Web Site: <http://www.billings.k12.mt.us/poly/index.htm>  
Catalog: <http://library.billings.k12.mt.us/uhtbin/cgisirsi>  
*Billings Schools, OCLC, Statewide Databases*

**Ponderosa Elementary School**

Robin Byford, School Librarian  
Yellowstone County  
4188 King Ave E Billings, MT 59101  
(406) 281-6218  
Web Site: <http://www.billings.k12.mt.us/>  
Catalog: <http://library.billings.k12.mt.us>  
*Billings Schools, OCLC, Statewide Databases*

**Rimrock Elementary School**

Angela Paris, School Librarian  
Yellowstone County  
415 North 30th Street Billings, MT 59101  
(406) 255-3876  
*Billings Schools, OCLC, Statewide Databases*

**Riverside Middle School**

Janet Nickoloff, Media Specialist  
Yellowstone County  
3700 Madison Ave Billings, MT 59101  
(406) 281-6013  
Web Site: <http://www.billings.k12.mt.us/riverside>  
Catalog: [http://library.billings.k12.mt.us/uhtbin/cgisirsi/BfckCeyE97/ALKALL\\_CR/1770075/60/1180/X](http://library.billings.k12.mt.us/uhtbin/cgisirsi/BfckCeyE97/ALKALL_CR/1770075/60/1180/X)  
*Billings Schools, OCLC, Statewide Databases*

**Rock Spring School**

Wilma Dodge, Supervising Teacher/Librarian  
Rosebud County  
PO Box 710 Angela, MT 59312  
(406) 354-7691  
*Statewide Databases*

**Rose Park Elementary School**

Ginny Waples, Librarian  
Yellowstone County  
1812 19th St W Billings, MT 59102  
(406) 281-6219  
*Billings Schools, OCLC, Statewide Databases*

**Rosebud Public Schools**

Aaron Kneeland, School Librarian  
Rosebud County  
PO Box 38 Rosebud, MT 59347  
(406) 347-5353  
*OCLC, Statewide Databases*

**Roundup Central Elementary School**

Tomi Alger, School Librarian  
Musselshell County  
600 1st St West Roundup, MT 59072  
(406) 323-1512  
Web Site: [roundup.k12.mt.us](http://roundup.k12.mt.us)  
*OCLC, Statewide Databases*

**Roundup High School**

Dale Alger, Library Director  
Musselshell County  
525 6th Ave West Roundup, MT 59072  
(406) 323-2402  
*Statewide Databases*

**S H School**

Ron Hunt, Supervising Teacher/Librarian  
Custer County  
HC 40 Box 6591 Miles City, MT 59301  
(406) 421-5439  
*OCLC, Statewide Databases*

**S Y Elementary**

Kim Henneberry, School Librarian  
Custer County  
HC-40 Miles City, MT 59301  
(406) 421-5526  
*Statewide Databases*

**Sandstone Elementary School**

Karen Mayhall, Librarian  
Yellowstone County  
1440 Nutter Blvd Billings, MT 59105  
(406) 281-6923  
Web Site: <http://www.billings.k12.mt.us/>  
*Billings Schools, OCLC, Statewide Databases*

**Shepherd Elementary Library**

Judy Carroll, School Librarian  
Yellowstone County  
PO Box 8 Shepherd, MT 59079  
(406) 373-5516  
*OCLC, Statewide Databases*

**Shepherd Junior and Senior High School Library**

June Brown, School Librarian  
Yellowstone County  
PO Box 8 Shepherd, MT 59079  
(406) 373-5300  
Web Site: <http://shepherd.schoolwires.com/9291022154714650/site/default.asp>  
*OCLC, Statewide Databases*

**Skyview High School Library**

Peggy Smith, Librarian  
Yellowstone County  
1775 High Sierra Boulevard Billings, MT 59105  
(406) 281-5287  
Web Site: <http://skyview.billings.k12.mt.us/library>  
Catalog: <http://library.billings.k12.mt.us/>  
*Billings Schools, OCLC, Statewide Databases*

**South Stacey Elementary Library**

Jenni Felgenhauer, Supervising Teacher/Librarian  
Custer County  
124 Stacey Rd. Volborg, MT 59351  
(406) 784-2256  
*OCLC, Statewide Databases*

**St Francis Intermediate School Library**

Jennifer Nieva, School Librarian  
Yellowstone County  
1734 Yellowstone Billings, MT 59102  
(406) 656-2300  
*Montana Shared Catalog, OCLC, Statewide Databases*

**St Francis Primary School Library**

Amy Brown, Librarian  
Yellowstone County  
511 Custer Avenue Billings, MT 59101  
(406) 259-6421  
*Montana Shared Catalog, OCLC, Statewide Databases*

**St Francis Upper School Library**

Donna Petriccione, Librarian  
Yellowstone County  
205 North 32nd Street Billings, MT 59101  
(406) 259-5037  
*Montana Shared Catalog, Statewide Databases*

**St Labre Indian Catholic School Library**

Dan Burke, School Library Media Specialist  
Rosebud County  
Ashland, MT 59003  
(406) 784-4500  
Web Site: <http://www.stlabre.org>  
*OCLC, Statewide Databases*

**Trail Creek Elementary Library**

Joyce Utroske, Supervising Teacher/Librarian  
Custer County  
HC 40 Box 6591A Ismay, MT 59336  
(406) 421-5503  
*OCLC, Statewide Databases*

**Twin Buttes Elementary Library**

Melinda Hogue, Supervising Teacher/Librarian  
Custer County  
HC 32 Box 4916 Miles City, MT 59301  
(406) 354-7271  
*OCLC, Statewide Databases*

**Washington Elementary School Library**

Virginia Waples, School Librarian  
Yellowstone County  
1044 Cook Ave Billings, MT 59102  
(406) 281-6699  
Web Site: <http://www.billings.k12.mt.us/>  
*Billings Schools, OCLC, Statewide Databases*

**Washington Middle School Library**

Sue Stanton, School Librarian  
Custer County  
1604 Main St Miles City, MT 59301  
(406) 234-2084  
*OCLC, Statewide Databases*

**Will James Middle School Library**

Andrea Doles, School Librarian  
Yellowstone County  
1200 30th St West Billings, MT 59102  
(406) 651-8559  
Catalog: <http://library.billings.k12.mt.us>  
*Billings Schools, OCLC, Statewide Databases*

**Yellowstone Academy Library**

Nancy Brandt, School Librarian  
Yellowstone County  
Billings, MT 59106  
(406) 656-2198  
*OCLC, Statewide Databases*

**Special****Billings Clinic Medical Library**

Victoria Koch, Library Director  
Yellowstone County  
PO Box 37000 Billings, MT 59107  
(406) 238-2226  
Web Site: <http://www.billingsclinic.com>  
Catalog: <http://mtscprod.msl.mt.gov/uhtbin/cgisirsi/x/0/0/49>  
*Montana Shared Catalog, OCLC, Statewide Databases*

**Crowley Fleck Library**

Margaret Webster, Library Director  
Yellowstone County  
PO Box 2529 Billings, MT 59101  
(406) 255-7201  
*OCLC, Statewide Databases*

**Dowl HKM Library**

Irene Nelson, Library Director  
Yellowstone County  
PO Box 31318 Billings, MT 59107  
(406) 656-6399  
*OCLC, Statewide Databases*

**Planned Parenthood of Montana**

Melissa Reams, Teacher  
Yellowstone County  
100 West Wicks Lane Billings, MT 59105  
(406) 869-5046  
Web Site: <http://www.ppfa.org>  
*OCLC, Statewide Databases*

**PLUK Library**

Libby Wolfe, Library Director  
Yellowstone County  
516 N 32nd Street Billings, MT 59101  
(406) 255-0540  
Web Site: <http://www.pluk.org>  
Catalog: <http://mtscprod.msl.mt.gov/uhtbin/cgisirsi/x/0/0/49>  
*Montana Shared Catalog, OCLC, Statewide Databases*

**Rimrock Foundation Library**

Hugh Kilbourne, Library Director  
Yellowstone County  
P.O. Box 30374 Billings, MT 59101  
(800) 227-3953  
Web Site: <http://www.rimrock.org>  
*OCLC, Statewide Databases*

**Southeastern Montana Research Library**

Robin Gerber, Library Director  
Custer County  
1411 Leighton Miles City, MT 59301

Web Site: <http://www.geocities.com/Heartland/Fields/6175/>  
*Statewide Databases*

**St Vincent Healthcare Health Sciences Library**

Ginger Kern, Assistant Librarian  
Yellowstone County  
PO Box 35200 Billings, MT 59101  
(406) 237-8640  
Web Site: <http://www.svh-mt.org>  
*OCLC, Statewide Databases*

**VA MT Healthcare System Medical Library**

Gail Wilkerson, Library Director  
Custer County  
210 South Winchester Miles City, MT 59301  
(406) 874-5615  
*OCLC, Statewide Databases*

**Yellowstone Boys and Girls Ranch Library**

Lynda Jorgenson, Library Director  
Yellowstone County  
1732 S 72nd St W Billings, MT 59106  
(406) 655-2100  
Web Site: <http://www.ybgr.org>  
*OCLC, Statewide Databases*

# State of Montana Index

	Montana	United States	Rank in US
<b>Geography</b>			
Population per square mile 2000	6.2	79.6	49
Households 2000 (complete count)	358,667	105,480,101	44
Persons per household 2000 (complete count)	2.5	2.6	46
<b>Resident Population</b>			
Estimate (July 1) 2009	974,989	307,006,550	44
Estimate, percent change - April 1, 2000 to July 1, 2009	8.1	9.1	21
Total population estimate, net change - April 1, 2000 to July 1, 2009	72,799	25,581,948	40
April 1, 2000 (complete count)	902,195	281,421,906	44
Under 5 years (July 1 - estimate) 2009	62,438	21,299,656	43
Under 5 years, percent (July 1 - estimate) 2009	6.4	6.9	39
Under 18 years (July 1 - estimate) 2009	219,828	74,548,215	44
Under 18 years, percent (July 1 - estimate) 2009	22.5	24.3	40
65 years and over (July 1 - estimate) 2009	141,903	39,570,590	44
65 years and over, percent (July 1 - estimate) 2009	14.6	12.9	7
Total females, percent (July 1 - estimate) 2009	50.0	50.7	40
White alone (July 1 - estimate) 2009	880,107	244,298,393	43
Black alone (July 1 - estimate) 2009	7,282	39,641,060	50
American Indian and Alaska Native alone (July 1 - estimate) 2009	62,873	3,151,284	13
Asian alone (July 1 - estimate) 2009	6,810	14,013,954	49
Native Hawaiian and Other Pacific Islander alone (July 1 - estimate) 2009	707	578,353	42
Population 5 years and over, percent speaking language other than English at home, 2000	5.2	17.9	44
Civilian noninstitutionalized population, 5 years and over, with a disability 2000	145,732	49,746,248	44
<b>Vital Statistics</b>			
Births 2006	12,508	4,265,555	43
Deaths 2006	8,472	2,426,264	44
Infant deaths under one year 2006	73	28,527	48
Population 5 years and over by residence in 1995 - percent in same house, 2000 (sample)	53.6	54.1	32
Percent foreign born population 2000 (sample)	1.8	11.1	49
<b>Education</b>			
Educational attainment - persons 25 years and over - percent high school graduate or higher 2000	87.2	80.4	6
Educational attainment - persons 25 years and over - percent bachelors degree or higher 2000	24.4	24.4	22
<b>Income/Poverty</b>			
Per capita income in 1999	17,151	21,587	47
Median household income 2008	43,948	52,029	42
People of all ages in poverty - percent 2008	14	13	17
Personal income 2007	31,783	11,634,322	46
Per capita personal income 2007	33,225	38,615	40
<b>Federal</b>			
Federal Government expenditure - total FY 2008	8,842,960	2,771,782,152	46
Federal Government expenditure per capita FY 2008	9,141	9,116	22
<b>Housing</b>			
Housing unit estimates as of July 1, 2009	441,279	129,925,421	44
Housing unit estimates - net change, April 1, 2000 (base) to July 1, 2009	28,648	14,020,948	45
Housing unit estimates - percent change, April 1, 2000 (base) to July 1, 2009	6.9	12.1	40
Owner-occupied housing units - percent of total occupied housing units 2000 (complete count)	69.1	66.2	25
Median value of specified owner-occupied housing units 2000 (sample)	99,500	119,600	31
Housing units by units in structure - multiple units 2000 (sample)	15.7	26.4	43
New private housing units authorized by building permits - total 2009 (20,000-place universe)	1,686	582,963	47
Valuation of new private housing units authorized by building permits 2009 (20,000-place universe)	253,576	95,410,469	47
<b>Employment/Business</b>			
Civilian labor force 2009	498,907	154,142,000	44
Civilian labor force unemployment 2009	30,862	14,265,000	46
Civilian labor force unemployment rate 2009	6.2	9.3	47
Employment in all industries (NAICS, no code) 2007	647,427	180,943,800	44
Employment in all industries, net change 2000 - 2007	88,372	14,185,000	34
Employment in government (NAICS 92) 2007	93,107	24,257,000	45
Earnings in all industries (NAICS, no code) 2007	22,293,038	8,848,240,000	47
Earnings in all industries (NAICS, no code), average earnings per job 2007	34,433	48,900	51
Average travel time to work for workers 16 years and over not working at home 2000 (in minutes)	18	26	49
Private nonfarm establishments 2007	37,755	7,705,018	42
Private nonfarm employment for pay period including March 12, 2007	37,755	7,705,018	42
Private nonfarm employment for pay period including March 12, 2007, percent change 2000-2007	353,807.0	120,604,265.0	46
Nonemployer: total (NAICS 00) - establishments, 2007	83,999	21,708,021	43
Accommodation and Food Services: total (NAICS 72) - sales of establishments with payroll 2002	1,537,986	449,498,718	45
Total number of firms 2002	100,402	22,974,655	42
Manufacturing: total (NAICS 31-33) - value of shipments 2002	4,987,577	3,916,136,712	47
Wholesale trade: total (NAICS 42) - sales of establishments with payroll 2002	7,223,420	4,634,755,112	47
Retail trade: total (NAICS 44-45) - sales of establishments with payroll 2002	10,122,625	3,056,421,997	45
Retail trade: total (NAICS 44-45) - sales of establishments with payroll per capita 2002	11,116	10,615	17
Land in farms (NAICS) 2007 (acres) (adjusted)	61,388,462	922,095,840	2

Source: U.S. Census Bureau

# Custer County Index

	County	Montana	Rank in MT
<b>Geography</b>			
Population per square mile 2000	3.1	6.2	25
Households 2000 (complete count)	4,768	358,667	14
Persons per household 2000 (complete count)	2.4	2.5	41
<b>Resident Population</b>			
Estimate (July 1) 2009	11,189	974,989	17
Estimate, percent change - April 1, 2000 to July 1, 2009	-4.3	8.1	33
Total population estimate, net change - April 1, 2000 to July 1, 2009	-507	72,799	47
April 1, 2000 (complete count)	11,696	902,195	16
Under 5 years (July 1 - estimate) 2009	734	62,438	17
Under 5 years, percent (July 1 - estimate) 2009	6.6	6.4	15
Under 18 years (July 1 - estimate) 2009	2,607	219,828	18
Under 18 years, percent (July 1 - estimate) 2009	23.3	22.5	17
65 years and over (July 1 - estimate) 2009	1,956	141,903	15
65 years and over, percent (July 1 - estimate) 2009	17.5	14.6	32
Total females, percent (July 1 - estimate) 2009	50.7	50.0	10
White alone (July 1 - estimate) 2009	10,784	880,107	14
Black alone (July 1 - estimate) 2009	26	7,282	21
American Indian and Alaska Native alone (July 1 - estimate) 2009	201	62,873	26
Asian alone (July 1 - estimate) 2009	34	6,810	21
Native Hawaiian and Other Pacific Islander alone (July 1 - estimate) 2009	7	707	13
Population 5 years and over, percent speaking language other than English at home, 2000	5	5	24
Civilian noninstitutionalized population, 5 years and over, with a disability 2000	2,063	145,732	17
<b>Vital Statistics</b>			
Births 2006	164	12,508	15
Deaths 2006	140	8,472	13
Infant deaths under one year 2006	2	73	12
Population 5 years and over by residence in 1995 - percent in same house, 2000 (sample)	57.7	53.6	35
Percent foreign born population 2000 (sample)	1.4	1.8	34
<b>Education</b>			
Educational attainment - persons 25 years and over - percent high school graduate or higher 2000	84.9	87.2	26
Educational attainment - persons 25 years and over - percent bachelors degree or higher 2000	18.8	24.4	23
<b>Income/Poverty</b>			
Per capita income in 1999	15,876	17,151	24
Median household income 2008	39,859	43,948	22
People of all ages in poverty - percent 2008	16	14	22
Personal income 2007	339	31,783	16
Per capita personal income 2007	30,348	33,225	26
<b>Federal</b>			
Federal Government expenditure - total FY 2008	100,070	8,842,960	56
Federal Government expenditure per capita FY 2008	8,976	9,141	35
<b>Housing</b>			
Housing unit estimates as of July 1, 2009	5,344	441,279	15
Housing unit estimates - net change, April 1, 2000 (base) to July 1, 2009	-16	28,648	50
Housing unit estimates - percent change, April 1, 2000 (base) to July 1, 2009	-0.3	6.9	37
Owner-occupied housing units - percent of total occupied housing units 2000 (complete count)	70.2	69.1	42
Median value of specified owner-occupied housing units 2000 (sample)	63,100	99,500	31
Housing units by units in structure - multiple units 2000 (sample)	17.6	15.7	9
New private housing units authorized by building permits - total 2009 (20,000-place universe)	4	1,686	18
Valuation of new private housing units authorized by building permits 2009 (20,000-place universe)	584	253,576	19
<b>Employment/Business</b>			
Civilian labor force 2009	5,871	498,907	15
Civilian labor force unemployment 2009	260	30,862	21
Civilian labor force unemployment rate 2009	4.4	6.2	40
Employment in all industries (NAICS, no code) 2007	7,405	647,427	15
Employment in all industries, net change 2000 - 2007	388	88,372	23
Employment in government (NAICS 92) 2007	1,123	93,107	17
Earnings in all industries (NAICS, no code) 2007	215,041	22,293,038	18
Earnings in all industries (NAICS, no code), average earnings per job 2007	29,040	34,433	23
Average travel time to work for workers 16 years and over not working at home 2000 (in minutes)	11.9	17.7	54
Private nonfarm establishments 2007	413	37,755	16
Private nonfarm employment for pay period including March 12, 2007	413	37,755	16
Private nonfarm employment for pay period including March 12, 2007, percent change 2000-2007	4,072.0	353,807.0	14
Nonemployer: total (NAICS 00) - establishments, 2007	771	83,999	21
Accommodation and Food Services: total (NAICS 72) - sales of establishments with payroll 2002	18,040	1,537,986	14
Total number of firms 2002	1,152	100,402	17
Manufacturing: total (NAICS 31-33) - value of shipments 2002	0	4,987,577	26
Wholesale trade: total (NAICS 42) - sales of establishments with payroll 2002	81,951	7,223,420	11
Retail trade: total (NAICS 44-45) - sales of establishments with payroll 2002	142,594	10,122,625	11
Retail trade: total (NAICS 44-45) - sales of establishments with payroll per capita 2002	12,466	11,116	7
Land in farms (NAICS) 2007 (acres) (adjusted)	2,127,013	61,388,462	7

Source: U.S. Census Bureau

# Musselshell County Index

	County	Montana	Rank in MT
<b>Geography</b>			
Population per square mile 2000	2.4	6.2	31
Households 2000 (complete count)	1,878	358,667	35
Persons per household 2000 (complete count)	2.3	2.5	46
<b>Resident Population</b>			
Estimate (July 1) 2009	4,600	974,989	36
Estimate, percent change - April 1, 2000 to July 1, 2009	2.3	8.1	16
Total population estimate, net change - April 1, 2000 to July 1, 2009	103	72,799	18
April 1, 2000 (complete count)	4,497	902,195	36
Under 5 years (July 1 - estimate) 2009	241	62,438	34
Under 5 years, percent (July 1 - estimate) 2009	5.2	6.4	33
Under 18 years (July 1 - estimate) 2009	931	219,828	36
Under 18 years, percent (July 1 - estimate) 2009	20.2	22.5	37
65 years and over (July 1 - estimate) 2009	858	141,903	35
65 years and over, percent (July 1 - estimate) 2009	18.7	14.6	26
Total females, percent (July 1 - estimate) 2009	51.4	50.0	3
White alone (July 1 - estimate) 2009	4,456	880,107	33
Black alone (July 1 - estimate) 2009	5	7,282	37
American Indian and Alaska Native alone (July 1 - estimate) 2009	73	62,873	36
Asian alone (July 1 - estimate) 2009	7	6,810	42
Native Hawaiian and Other Pacific Islander alone (July 1 - estimate) 2009	2	707	26
Population 5 years and over, percent speaking language other than English at home, 2000	5	5	17
Civilian noninstitutionalized population, 5 years and over, with a disability 2000	823	145,732	36
<b>Vital Statistics</b>			
Births 2006	42	12,508	36
Deaths 2006	53	8,472	36
Infant deaths under one year 2006	1	73	27
Population 5 years and over by residence in 1995 - percent in same house, 2000 (sample)	59.8	53.6	31
Percent foreign born population 2000 (sample)	2.0	1.8	11
<b>Education</b>			
Educational attainment - persons 25 years and over - percent high school graduate or higher 2000	82.6	87.2	40
Educational attainment - persons 25 years and over - percent bachelors degree or higher 2000	16.7	24.4	36
<b>Income/Poverty</b>			
Per capita income in 1999	15,389	17,151	28
Median household income 2008	34,318	43,948	44
People of all ages in poverty - percent 2008	18	14	13
Personal income 2007	107	31,783	37
Per capita personal income 2007	23,909	33,225	50
<b>Federal</b>			
Federal Government expenditure - total FY 2008	34,273	8,842,960	33
Federal Government expenditure per capita FY 2008	7,620	9,141	43
<b>Housing</b>			
Housing unit estimates as of July 1, 2009	2,312	441,279	35
Housing unit estimates - net change, April 1, 2000 (base) to July 1, 2009	-5	28,648	36
Housing unit estimates - percent change, April 1, 2000 (base) to July 1, 2009	-0.2	6.9	32
Owner-occupied housing units - percent of total occupied housing units 2000 (complete count)	76.9	69.1	10
Median value of specified owner-occupied housing units 2000 (sample)	54,600	99,500	44
Housing units by units in structure - multiple units 2000 (sample)	5.3	15.7	41
New private housing units authorized by building permits - total 2009 (20,000-place universe)	3	1,686	23
Valuation of new private housing units authorized by building permits 2009 (20,000-place universe)	510	253,576	20
<b>Employment/Business</b>			
Civilian labor force 2009	2,478	498,907	35
Civilian labor force unemployment 2009	145	30,862	33
Civilian labor force unemployment rate 2009	5.9	6.2	18
Employment in all industries (NAICS, no code) 2007	1,997	647,427	41
Employment in all industries, net change 2000 - 2007	13	88,372	47
Employment in government (NAICS 92) 2007	293	93,107	40
Earnings in all industries (NAICS, no code) 2007	50,178	22,293,038	41
Earnings in all industries (NAICS, no code), average earnings per job 2007	25,127	34,433	37
Average travel time to work for workers 16 years and over not working at home 2000 (in minutes)	25.0	17.7	5
Private nonfarm establishments 2007	128	37,755	41
Private nonfarm employment for pay period including March 12, 2007	128	37,755	41
Private nonfarm employment for pay period including March 12, 2007, percent change 2000-2007	700.0	353,807.0	41
Nonemployer: total (NAICS 00) - establishments, 2007	387	83,999	36
Accommodation and Food Services: total (NAICS 72) - sales of establishments with payroll 2002	1,946	1,537,986	41
Total number of firms 2002	466	100,402	37
Manufacturing: total (NAICS 31-33) - value of shipments 2002	0	4,987,577	37
Wholesale trade: total (NAICS 42) - sales of establishments with payroll 2002	10,174	7,223,420	30
Retail trade: total (NAICS 44-45) - sales of establishments with payroll 2002	16,001	10,122,625	42
Retail trade: total (NAICS 44-45) - sales of establishments with payroll per capita 2002	3,586	11,116	47
Land in farms (NAICS) 2007 (acres) (adjusted)	1,133,030	61,388,462	22

Source: U.S. Census Bureau



# Rosebud County Index

	County	Montana	Rank in MT
<b>Geography</b>			
Population per square mile 2000	1.9	6.2	33
Households 2000 (complete count)	3,307	358,667	25
Persons per household 2000 (complete count)	2.8	2.5	4
<b>Resident Population</b>			
Estimate (July 1) 2009	9,258	974,989	22
Estimate, percent change - April 1, 2000 to July 1, 2009	-1.4	8.1	27
Total population estimate, net change - April 1, 2000 to July 1, 2009	-131	72,799	32
April 1, 2000 (complete count)	9,383	902,195	23
Under 5 years (July 1 - estimate) 2009	858	62,438	15
Under 5 years, percent (July 1 - estimate) 2009	9.3	6.4	4
Under 18 years (July 1 - estimate) 2009	2,939	219,828	16
Under 18 years, percent (July 1 - estimate) 2009	31.7	22.5	4
65 years and over (July 1 - estimate) 2009	1,022	141,903	32
65 years and over, percent (July 1 - estimate) 2009	11.0	14.6	52
Total females, percent (July 1 - estimate) 2009	50.2	50.0	21
White alone (July 1 - estimate) 2009	5,655	880,107	27
Black alone (July 1 - estimate) 2009	56	7,282	14
American Indian and Alaska Native alone (July 1 - estimate) 2009	3,258	62,873	8
Asian alone (July 1 - estimate) 2009	71	6,810	12
Native Hawaiian and Other Pacific Islander alone (July 1 - estimate) 2009	0	707	42
Population 5 years and over, percent speaking language other than English at home, 2000	13	5	5
Civilian noninstitutionalized population, 5 years and over, with a disability 2000	1,460	145,732	22
<b>Vital Statistics</b>			
Births 2006	164	12,508	16
Deaths 2006	71	8,472	27
Infant deaths under one year 2006	1	73	22
Population 5 years and over by residence in 1995 - percent in same house, 2000 (sample)	58.8	53.6	34
Percent foreign born population 2000 (sample)	1.1	1.8	43
<b>Education</b>			
Educational attainment - persons 25 years and over - percent high school graduate or higher 2000	84.4	87.2	29
Educational attainment - persons 25 years and over - percent bachelors degree or higher 2000	17.6	24.4	28
<b>Income/Poverty</b>			
Per capita income in 1999	15,032	17,151	35
Median household income 2008	45,789	43,948	9
People of all ages in poverty - percent 2008	23	14	5
Personal income 2007	278	31,783	21
Per capita personal income 2007	30,364	33,225	25
<b>Federal</b>			
Federal Government expenditure - total FY 2008	80,595	8,842,960	8
Federal Government expenditure per capita FY 2008	8,770	9,141	37
<b>Housing</b>			
Housing unit estimates as of July 1, 2009	3,946	441,279	28
Housing unit estimates - net change, April 1, 2000 (base) to July 1, 2009	31	28,648	21
Housing unit estimates - percent change, April 1, 2000 (base) to July 1, 2009	0.8	6.9	22
Owner-occupied housing units - percent of total occupied housing units 2000 (complete count)	67.1	69.1	46
Median value of specified owner-occupied housing units 2000 (sample)	66,700	99,500	30
Housing units by units in structure - multiple units 2000 (sample)	10.8	15.7	23
New private housing units authorized by building permits - total 2009 (20,000-place universe)	6	1,686	15
Valuation of new private housing units authorized by building permits 2009 (20,000-place universe)	916	253,576	15
<b>Employment/Business</b>			
Civilian labor force 2009	4,046	498,907	25
Civilian labor force unemployment 2009	249	30,862	23
Civilian labor force unemployment rate 2009	6.2	6.2	17
Employment in all industries (NAICS, no code) 2007	5,945	647,427	19
Employment in all industries, net change 2000 - 2007	52	88,372	38
Employment in government (NAICS 92) 2007	1,695	93,107	14
Earnings in all industries (NAICS, no code) 2007	248,206	22,293,038	14
Earnings in all industries (NAICS, no code), average earnings per job 2007	41,750	34,433	1
Average travel time to work for workers 16 years and over not working at home 2000 (in minutes)	16.0	17.7	35
Private nonfarm establishments 2007	180	37,755	31
Private nonfarm employment for pay period including March 12, 2007	180	37,755	31
Private nonfarm employment for pay period including March 12, 2007, percent change 2000-2007	2,861.0	353,807.0	17
Nonemployer: total (NAICS 00) - establishments, 2007	521	83,999	26
Accommodation and Food Services: total (NAICS 72) - sales of establishments with payroll 2002	8,400	1,537,986	26
Total number of firms 2002	678	100,402	28
Manufacturing: total (NAICS 31-33) - value of shipments 2002	0	4,987,577	10
Wholesale trade: total (NAICS 42) - sales of establishments with payroll 2002	0	7,223,420	39
Retail trade: total (NAICS 44-45) - sales of establishments with payroll 2002	39,216	10,122,625	27
Retail trade: total (NAICS 44-45) - sales of establishments with payroll per capita 2002	4,227	11,116	46
Land in farms (NAICS) 2007 (acres) (adjusted)	2,714,024	61,388,462	2

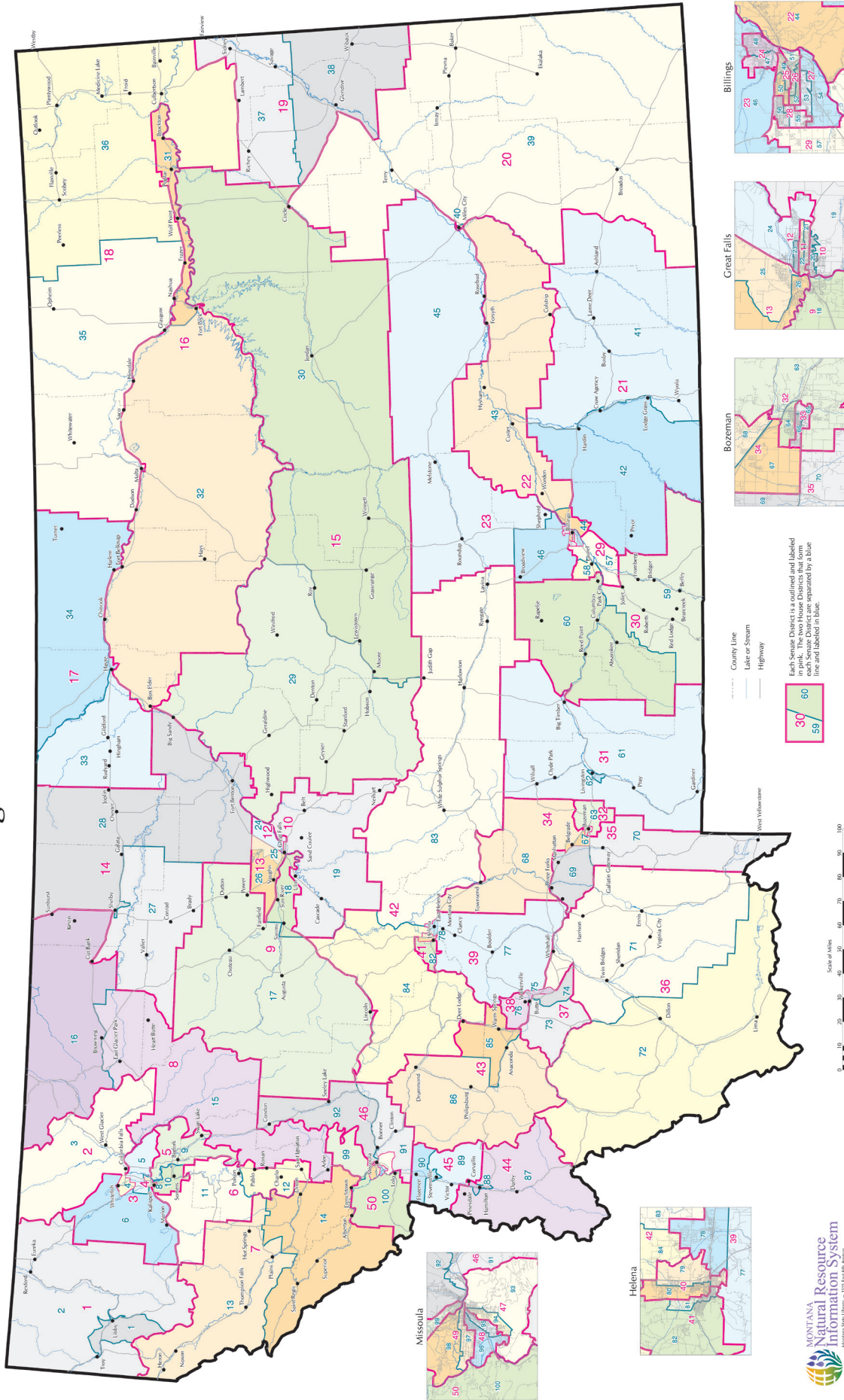
Source: U.S. Census Bureau

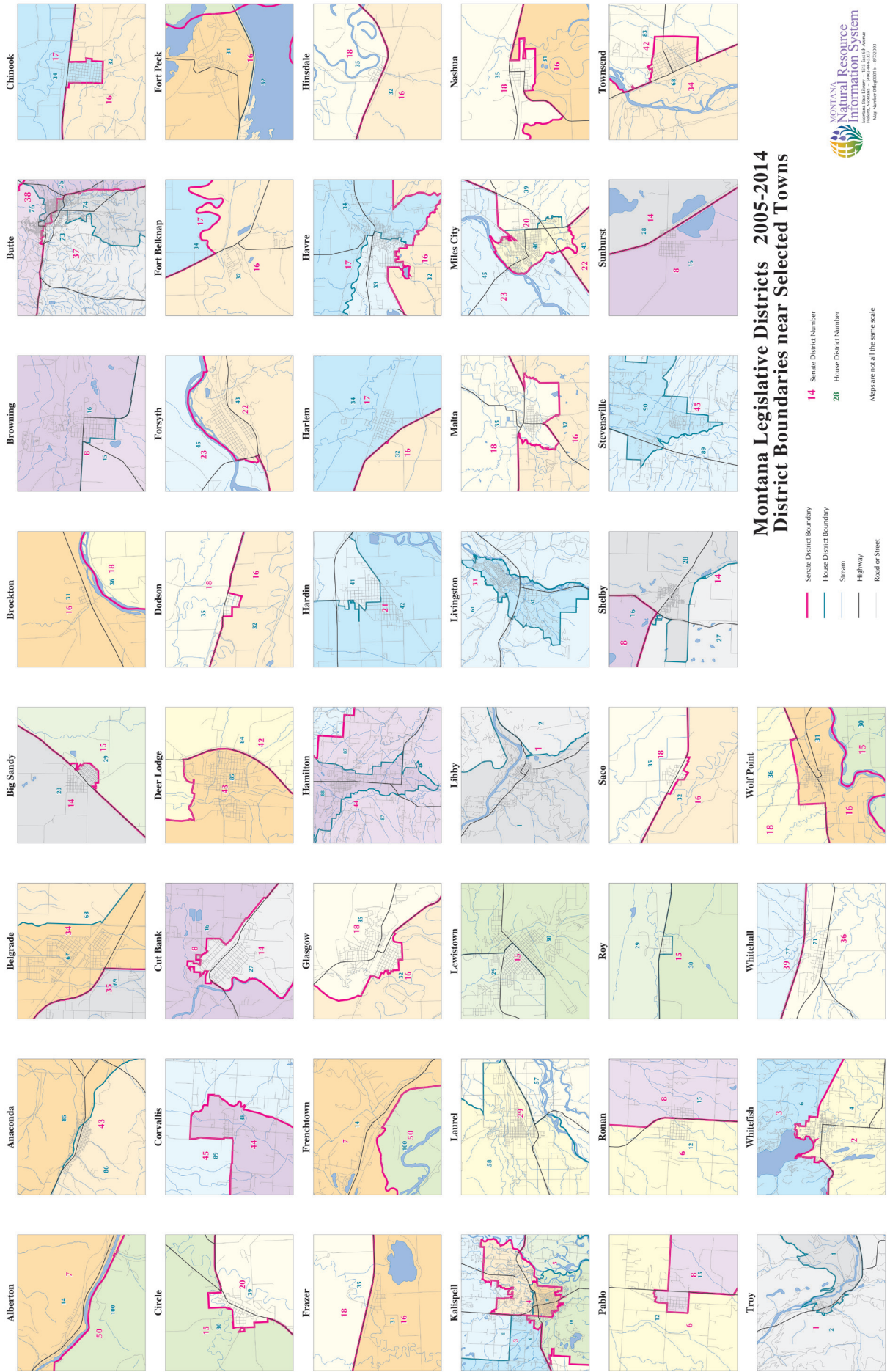
# Yellowstone County Index

	County	Montana	Rank in MT
<b>Geography</b>			
Population per square mile 2000	49.1	6.2	1
Households 2000 (complete count)	52,084	358,667	1
Persons per household 2000 (complete count)	2.4	2.5	27
<b>Resident Population</b>			
Estimate (July 1) 2009	144,797	974,989	1
Estimate, percent change - April 1, 2000 to July 1, 2009	11.9	8.1	6
Total population estimate, net change - April 1, 2000 to July 1, 2009	15,449	72,799	2
April 1, 2000 (complete count)	129,352	902,195	1
Under 5 years (July 1 - estimate) 2009	10,139	62,438	1
Under 5 years, percent (July 1 - estimate) 2009	7.0	6.4	9
Under 18 years (July 1 - estimate) 2009	34,442	219,828	1
Under 18 years, percent (July 1 - estimate) 2009	23.8	22.5	14
65 years and over (July 1 - estimate) 2009	20,325	141,903	1
65 years and over, percent (July 1 - estimate) 2009	14.0	14.6	46
Total females, percent (July 1 - estimate) 2009	51.0	50.0	5
White alone (July 1 - estimate) 2009	132,253	880,107	1
Black alone (July 1 - estimate) 2009	2,324	7,282	1
American Indian and Alaska Native alone (July 1 - estimate) 2009	5,914	62,873	5
Asian alone (July 1 - estimate) 2009	1,393	6,810	1
Native Hawaiian and Other Pacific Islander alone (July 1 - estimate) 2009	201	707	1
Population 5 years and over, percent speaking language other than English at home, 2000	5	5	22
Civilian noninstitutionalized population, 5 years and over, with a disability 2000	21,017	145,732	1
<b>Vital Statistics</b>			
Births 2006	1,982	12,508	1
Deaths 2006	1,250	8,472	1
Infant deaths under one year 2006	11	73	1
Population 5 years and over by residence in 1995 - percent in same house, 2000 (sample)	52.3	53.6	51
Percent foreign born population 2000 (sample)	1.4	1.8	38
<b>Education</b>			
Educational attainment - persons 25 years and over - percent high school graduate or higher 2000	88.5	87.2	8
Educational attainment - persons 25 years and over - percent bachelors degree or higher 2000	26.4	24.4	6
<b>Income/Poverty</b>			
Per capita income in 1999	19,303	17,151	1
Median household income 2008	49,337	43,948	6
People of all ages in poverty - percent 2008	11	14	50
Personal income 2007	5,328	31,783	1
Per capita personal income 2007	38,124	33,225	1
<b>Federal</b>			
Federal Government expenditure - total FY 2008	925,432	8,842,960	4
Federal Government expenditure per capita FY 2008	6,501	9,141	49
<b>Housing</b>			
Housing unit estimates as of July 1, 2009	59,773	441,279	1
Housing unit estimates - net change, April 1, 2000 (base) to July 1, 2009	5,212	28,648	3
Housing unit estimates - percent change, April 1, 2000 (base) to July 1, 2009	9.6	6.9	4
Owner-occupied housing units - percent of total occupied housing units 2000 (complete count)	69.2	69.1	44
Median value of specified owner-occupied housing units 2000 (sample)	101,900	99,500	10
Housing units by units in structure - multiple units 2000 (sample)	19.9	15.7	5
New private housing units authorized by building permits - total 2009 (20,000-place universe)	513	1,686	1
Valuation of new private housing units authorized by building permits 2009 (20,000-place universe)	59,593	253,576	2
<b>Employment/Business</b>			
Civilian labor force 2009	81,834	498,907	1
Civilian labor force unemployment 2009	3,643	30,862	2
Civilian labor force unemployment rate 2009	4.5	6.2	37
Employment in all industries (NAICS, no code) 2007	103,448	647,427	1
Employment in all industries, net change 2000 - 2007	14,248	88,372	2
Employment in government (NAICS 92) 2007	9,344	93,107	3
Earnings in all industries (NAICS, no code) 2007	4,195,080	22,293,038	1
Earnings in all industries (NAICS, no code), average earnings per job 2007	40,553	34,433	2
Average travel time to work for workers 16 years and over not working at home 2000 (in minutes)	17.9	17.7	25
Private nonfarm establishments 2007	5,512	37,755	1
Private nonfarm employment for pay period including March 12, 2007	5,512	37,755	1
Private nonfarm employment for pay period including March 12, 2007, percent change 2000-2007	66,093.0	353,807.0	1
Nonemployer: total (NAICS 00) - establishments, 2007	10,725	83,999	1
Accommodation and Food Services: total (NAICS 72) - sales of establishments with payroll 2002	274,959	1,537,986	1
Total number of firms 2002	14,009	100,402	1
Manufacturing: total (NAICS 31-33) - value of shipments 2002	2,128,044	4,987,577	1
Wholesale trade: total (NAICS 42) - sales of establishments with payroll 2002	0	7,223,420	38
Retail trade: total (NAICS 44-45) - sales of establishments with payroll 2002	1,944,727	10,122,625	1
Retail trade: total (NAICS 44-45) - sales of establishments with payroll per capita 2002	14,738	11,116	3
Land in farms (NAICS) 2007 (acres) (adjusted)	1,615,769	61,388,462	14

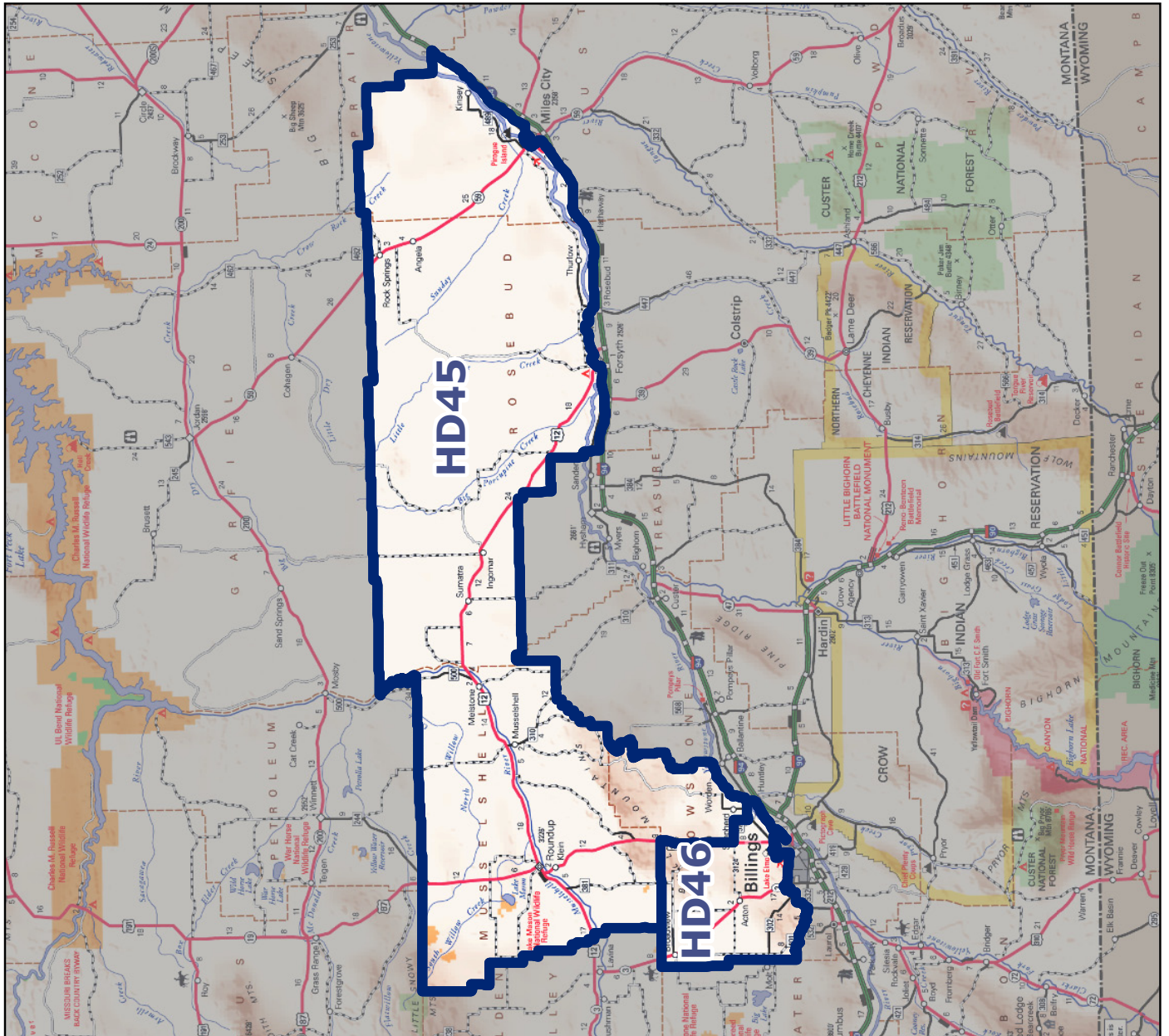
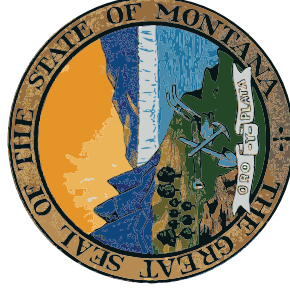
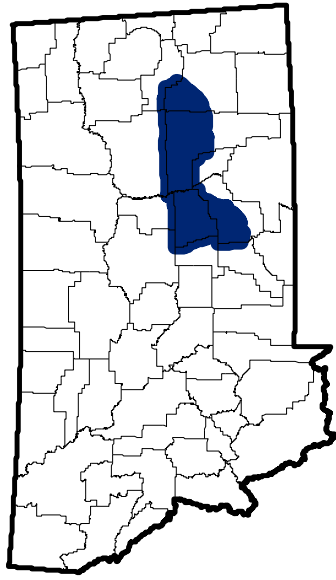
Source: U.S. Census Bureau

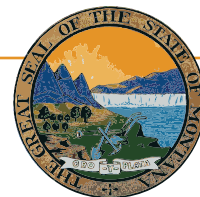
# Montana Legislative Districts 2005-2014





# Montana Senate District 23





## Montana State Library

1515 East 6th Avenue  
PO Box 201800  
Helena, MT 59620  
(406) 444-3115

<http://msl.mt.gov>

## Statewide Library Resources

- **Montana Shared Catalog**
- **Montana Library Directory**

<http://mymontanalibrary.org>

[http://msl.mt.gov/For\\_Librarians/Library\\_Directory](http://msl.mt.gov/For_Librarians/Library_Directory)

## Montana State Digital Library

- **Library Information Services**
  - Archive Montana
  - Montana State Publications Online
  - Request or submit State Publications
  - Montana State Library catalog
  - Online Magazines & Journals
  - Research Databases
- **Natural Resource Information System**
  - Montana GIS Portal
  - Maps and Geographic Information
  - Montana Digital Atlas/Map Gallery
  - Water Information
- **Natural Heritage Program**
  - Montana Field Guide
  - Natural Heritage Tracker
  - Species of Concern Reports - Animals
  - Species of Concern Reports - Plants
  - Map Viewer

<http://archive.msl.mt.gov>

<http://statepublications.mt.gov>

[http://msl.mt.gov/for\\_state\\_employees/State\\_Publications](http://msl.mt.gov/for_state_employees/State_Publications)

<http://msl.mt.gov/msc>

[http://msl.mt.gov/for\\_state\\_employees/journals.asp](http://msl.mt.gov/for_state_employees/journals.asp)

[http://msl.mt.gov/For\\_State\\_Employees/Find\\_Resources\\_Online/](http://msl.mt.gov/For_State_Employees/Find_Resources_Online/)

<http://nris.mt.gov>

<http://gisportal.mt.gov/>

<http://nris.mt.gov/gis>

<http://nris.mt.gov/interactive.html>

<http://nris.mt.gov/wis>

<http://mtnhp.org/>

<http://fieldguide.mt.gov/>

<http://mtnhp.org/Tracker>

<http://mtnhp.org/SpeciesOfConcern/?AorP=a>

<http://mtnhp.org/SpeciesOfConcern/?AorP=p>

<http://mtnhp.org/mapviewer/>

## Montana Talking Book Library

- On-line catalogs and services – WebOpac  
WebBraille

[http://msl.mt.gov/talking\\_book\\_library](http://msl.mt.gov/talking_book_library)

<http://www.klasweb.msl.mt.gov>

## Montana State Library In-House Partners

- **Montana Base Map Service Center**
- **Montana Fish, Wildlife & Parks**
- **Natural Resources Conservation Service**

<http://giscoordination.mt.gov/>

<http://fwp.mt.gov>

<http://www.mt.nrcs.usda.gov/>

## Legislative Snapshot

[http://msl.mt.gov/legislative\\_snapshot/](http://msl.mt.gov/legislative_snapshot/)