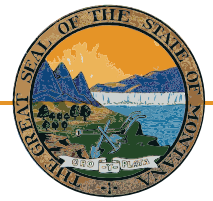


Legislative Snapshot 2011



Includes information for the State of Montana,
Senate District 22, and House Districts 43 and 44.

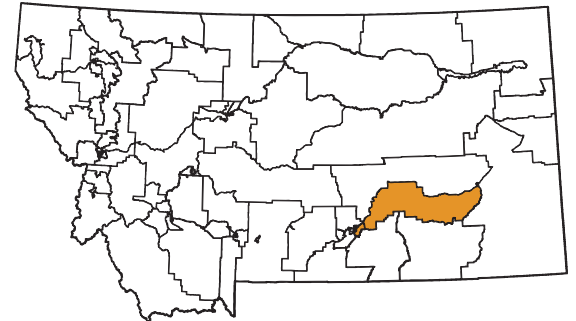
http://msl.mt.gov/legislative_snapshot/



Senate District 22

Senator Taylor Brown (R)

775 Squaw Creek Road
Huntley, MT 59037-9219



House District 43

Representative Duane Ankney (R)

PO Box 2138
Colstrip, MT 59323-2138



House District 44

Representative Jonathan McNiven (R)

3445 Rock Pillar Road
Huntley, MT 59037-9237



Letter from the Montana State Librarian

On behalf of the Montana State Library, I would like to welcome you to the 2011 legislative session. Our information experts have compiled this booklet to be a resource to you as you take on the important work of representing the collective needs of all Montanans and the special needs of your district during this legislative session.



As for past editions, we reviewed proposed bills and national and state trends related to what we believe will be major themes in this legislative session. To that end, you will find a wide range of information on our state's economy, energy production and development, and land and water use. Education is always an important issue, and you will find relevant information on our state's public schools and test scores, as well as on the libraries that help to augment what our schools do. While the drought seems to have subsided, our forests are now inundated by both blight and bark beetles, and you will be able to take a look at the most current information on maps available through the State Library. Finally, wildlife and recreation will always be an important part of Montana life, and we've pulled several highlights from our collection that might help to guide your decision-making this session.

The Montana State Library is a small and very unique agency. We employ not only librarians, but GIS and natural resource specialists and partner with botanists and zoologists, as well as federal and state agencies. We manage an enormous collection of state publications, as we simultaneously work to ensure that Montana's blind and physically disabled have access to reading materials and information.

We also work on behalf of all of Montana's libraries to help them provide the latest and best information and library services to their patrons – your constituents – whether it's downloadable books, public access computers, online resources, or just the latest bestseller. Without the Montana State Library leading the charge, Montana libraries would not be able to afford these resources and services for their patrons – all of which are being used in record numbers during these difficult economic times. In this age of information, most of which is only accessed online, the Montana State Library, through libraries across the state, provides a vital link that affects Montanans in a multitude of ways.

We created this book for you to not only to provide vital information to help you make difficult decisions in the coming months, but to demonstrate the power of what a diverse staff with amazingly diverse skills can do to make information in many different forms available to every Montanan. We are very proud of what we do here at the State Library as we work to empower Montanans by providing access to information, enhancing learning in families and communities, and building 21st Century skills.

We hope that you use this book throughout the session and stop by to see us – in person or virtually. Whether you visit us at our library or online, you will be able to browse our collection of government information, get help researching a specific issue, or find a quiet place to work or meet with colleagues. We are located one block east of the Capitol, behind the Montana Historical Society, at the north end of the Justice building. And of course, our services are available 24 hours a day, seven days a week at <http://msl.mt.gov>.

Sincerely,

A handwritten signature in black ink that reads "Darlene Staffeldt". The signature is written in a cursive, flowing style.

Darlene Staffeldt
Montana State Librarian

Senate District 22 House District 43 House District 44

Table of Contents

2	Recent Performance of the Montana Economy and its Industries
5	Recovery
6	Demographics
8	Education
9	Libraries
11	Land
12	Water
13	Environmental Impacts
14	Energy, Mines
15	Wildlife and Recreation

Appendices

i	Library Directory
vi	State of Montana Index

Senate District 22 County Indexes

vii	Custer County
viii	Rosebud County
ix	Treasure County
x	Yellowstone County

Maps

xi	Legislative Districts
xiii	Senate District 22

Recent Performance of the Montana Economy and Its Industries

Source: Montana Department of Labor, Research and Analysis Bureau

The Montana economy has undergone significant changes in the past two years as the national recession impacted the state. Leading up to the recession, Montana was experiencing faster employment growth, larger wage growth, and lower unemployment than the nation as a whole. Over the 1997-2007 time period, employment in Montana grew at a rate of 2.1% per year – far surpassing the national growth rate of 1.1% and Montana’s long-term average of 1.2% from 1976 to 2009.

Montana continued to outperform the nation during the recession with payroll employment losses of 5.8% compared to 6.1% nationally. In fact, Montana had only two quarters of negative personal income growth in 2008 and 2009 compared to four quarters nationally. Our industry mix, more responsible borrowing and lending practices, and the momentum of the economy preceding the downturn all contributed to our above-average performance. Montana’s unemployment rate also outperformed the national rate. Montana’s unemployment rate increased by 2.7 points from 3.5% in 2007 to 6.2% in 2009, compared to a 4.7 point increase nationally to 9.7% in 2009.

Despite Montana’s better performance, there were a significant number of Montana workers who lost their jobs during the recession, and even Montanans who retained their jobs have experienced slower wage growth. The average wage increased from 2008 to 2009 by only 1.3%



to \$33,760; wage growth in prior years ranged from three to four percent.

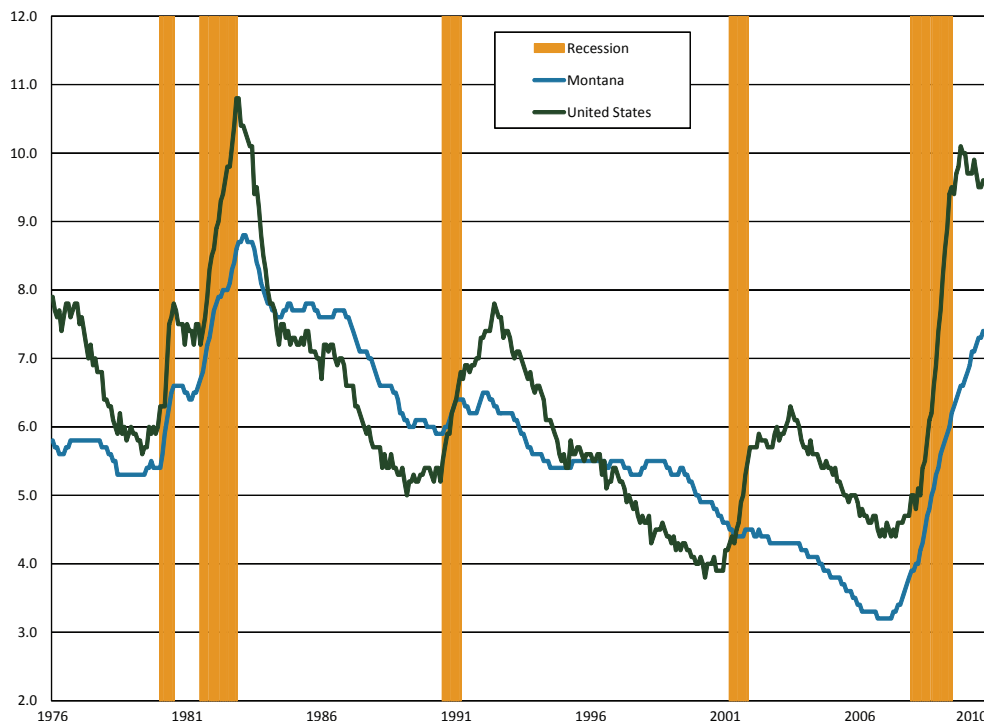
Although the recession is officially over and personal income growth has returned, job growth remains slow. Montana employment grew during the first half of 2010, but jobs were lost in the third quarter as government stimulus spending slowed. Some of this slow job growth is expected because strong labor productivity gains have reduced the demand for workers. Further, employment always lags an economic recovery. Figure 1 shows the U.S. and Montana unemployment rate since 1976 with

recessionary periods designated by the orange background. In recent recessions, the unemployment rate continued to increase after the recession officially ended.

There have been three industries that have continued to grow throughout the recession, helping to stabilize the Montana economy and providing job opportunities for dislocated workers from other industries – health care, public administration, and education. Public administration and education workers are predominantly hired by local, state, or federal governments, and benefited from government stimulus spending during the recession. Over 56% of government employment is hired at the local level, with 26% hired by the state. Government plays an important part of the Montana economy, comprising about 16% of GDP in 2008 and about 20% of employment during 2009. The industry also serves as a stabilizing, counter-cyclical force with slow growth in both economic prosperity and during downturns. Although government employment grew faster than private employment during this recession, private industry outpaced government hiring in the years leading up to the recession.

Health care was the fastest-growing industry during 2007-2009 with employment growth of 7.1% and a job gain of almost 4,100 workers from 2007 to 2009. Employment growth in health care has since slowed (see Figure 3). Health care related occupations, such as registered nurses, nurses’ aides, and home health care aides, are expected to continue to grow as the baby boom generation ages and demands more health care services. The growing health care occupations may provide employment opportunities for many workers who lost their jobs during the recession.

Figure 1. U.S./Montana Unemployment Rates and Recession



One way to examine the long-term impact of the recession on Montana's economy is to divide the industries into three categories based on their roles in the economy – base industries, consumer industries, and business-support industries. Base industries bring new money into Montana through exports and help drive growth in other industries through the increase in wealth. In Montana, these industries are generally natural resource based and include agriculture, mining, energy, manufacturing, and timber. According to the Montana Department of Commerce, the top exports from Montana are bulk wheat, inorganic chemicals, and industrial machinery. Table 2 lists these exports. In addition, federal government services can be thought of as a base industry in Montana because we receive more federal spending than what is paid by Montanans in federal taxes. Tourism can also be a base industry, although many of Montana's tourists come from within the state.

Table 2. Top 10 Exports from Montana Worldwide in Millions of U.S. Dollars

1	Bulk Wheat	447.40
2	Inorganic Chemicals	305.00
3	Industrial Machinery	156.00
4	Mineral Fuel, Oil, etc.	66.00
5	Ores, Slag, Ash	65.30
6	Vehicles, Parts, and Accessory Items	58.40
7	Organic Chemicals	57.70
8	Salt, Sulfur, Earth, and Stone	42.30
9	Paper & Paperboard	33.00
10	Miscellaneous Chemical Products	29.20

Source: Montana Department of Commerce Census and Economic Information Center

During 2008, the agriculture, mining, and energy sectors benefited from high commodity prices and were able to bring wealth into the state to support the state's economy during the first year of the downturn. Commodity prices decreased to long-term trends during 2009, however, leading to a 13% job loss in the mining industry from 2007-2009. Mining employment is relatively small, however, and the mining job loss was less than 1,000 workers. With stronger commodity prices in 2010, mining employment has regained many of their lost jobs. Figure 3 tracks employment levels in mining and other industries during the recession.

However, other base industries in Montana were more severely harmed by the recession. In particular, Montana manufacturers faced plant closures and job losses of over 3,000 jobs (14.8%) from 2001-2009 because of low worldwide demand for their products. Because many manufacturing processes are energy intensive, high energy prices harmed the manufacturing industry even while helping Montana's energy production industries. Over 53% of the manu-

facturing losses occurred in the wood products manufacturing industry and were related to the national downturn in the housing market. The wood products industry lost approximately 1,600 jobs in the past two years. Because the national housing market is expected to recover slowly, and because plant closures and mass layoffs have left holes in the supply chain for many manufacturers, the recession is likely to have long-term impacts on the logging and manufacturing industries in Montana.

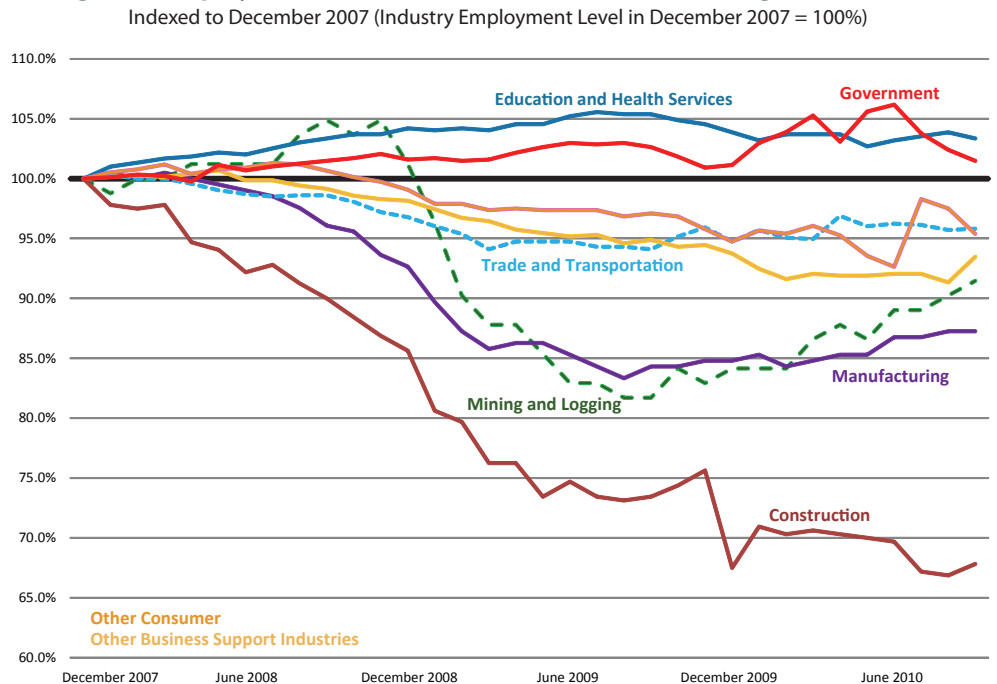
The new wealth brought into Montana by base industries drives economic growth in consumer-based industries. Consumer-based industries are industries where growth depends on an increase in population or income, such as construction, retail, health care, or entertainment. As large employers, consumer-based industries play a large role in our economy. However, these industries tend to pay lower wages because of a predominance of lower-skilled jobs. Consumer-based industries made up 61% of Montana's employment, but paid only 52% of wages in the second quarter of 2010.

With the large loss of jobs in manufacturing, wood products, and in other base industries, Montanans had less money to spend in consumer-based industries, resulting in further job losses. The construction industry was the worst hit industry with over 8,300 lost jobs from 2007 to 2009 – a decline of 24.2%, with job losses continuing in 2010. Construction jobs represent over 55% of the total number of jobs lost during the recession. The retail industry faced losses of over 3,700 jobs, but the percentage of jobs lost is smaller at 5.0% due to the large size of the industry.

Finally, the third industry category is business support industries, which require a nexus of economic activity to prosper. Business support industries, such as transportation and warehousing, wholesale, professional services, and administrative support services, depend on the growth of other industries. As the recession affected other industries in the state, the business support industries experienced a slow and steady decline in jobs. Losses in these industries are not as severe as the losses in construction, manufacturing, and retail, ranging from two to four percent of the 2007 employment. Business support services will need other industries to have stronger growth before regaining employment. In the long-term, continuing either amenity-driven population growth or economic growth will allow business support industries to prosper.

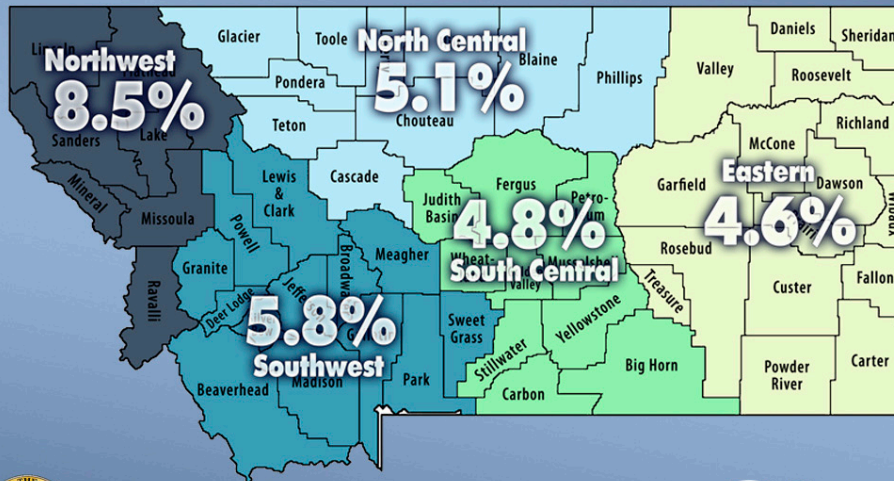
In summary, the Montana economy remains fairly reliant on traditional natural resource-based industries to bring in new money into the state. Many of these base industries will join the nation in economic recovery, but the recession's impacts on the wood products industry and on some manufacturers may be long-lasting. The performance of these base industries will drive growth in the consumer-based and service industries. Consumer-based industries were the fastest growing industries prior to the recession, and employ the majority of the state's workforce. As job and wage growth resumes as a part of economic recovery, consumer-based industries should prosper. Finally, the business support industries depend on a nexus of population and industry. All of these industries are interconnected and rely on each other for success.

Figure 3. Employment in Selected Montana Industries during the Recession





2009 Annual Unemployment Rates by Region



Montana
Department of Labor and Industry



Figure 4

Montana's Regions

The Northwestern portion of Montana felt the impact of the recession most acutely, largely because the region had a large concentration of construction, wood products, and manufacturing workers. All of these industries had large employment losses during the recession. The 2009 average unemployment rate for this region was 8.5%, as shown in Figure 4. In comparison, all other regions had unemployment rates of less than 6%.

In contrast, the Eastern portion of Montana has higher concentrations of employment in utilities and public administration than does the Western portion of the state, with a nearly average concentration in health care. The growth of these industries supported the Eastern Montana economy during the recession. In addition, the Eastern region was not as heavily reliant on the declining industries of construction, retail, and manufacturing as were other parts of the state. Further, the agriculture and mining industries posted relatively strong performances during 2008 due to high commodity prices, although these industries retracted when commodity prices declined.

Despite larger job losses in the Western portion of Montana, the Northwest and Southwest regions still have more jobs than other parts of the state. The more vibrant economies of Western Montana will likely regain their status as economic drivers of our state as the economy recovers from the recession.

Challenges to the Montana Economy

Reducing Unemployment

Although the recession is officially over, the Montana economy continues to face challenges as it exits the recession. The first and foremost of these challenges is to reduce unemployment by adding more jobs and ensuring that our workforce has the skills to fill the new jobs. Although our overall job growth depends on the economic performance of the U.S. and global economy, out-of-work Montanans can prepare themselves for opportunities when job growth resumes. Many industries, particularly construction and retail, have lost so many jobs that it will be difficult for workers to find jobs in their old occupation. For example, the Montana economy is expected to add over 100 new carpenter jobs per year as the economy recovers, but about 2,000 carpenters lost their jobs in the last two years, still leaving many of these workers without a job. These workers need to be retrained for

Percent Change in Property Values Due to Reappraisal

	Residential	Commercial	Agricultural	Forest Land	Total
Montana	1.76	2.46	-4.66	-6.72	5.19
Custer County	-1.08	3.34	-8.59	-2.88	22.43
Rosebud County	0.58	0.76	-7.22	-1.53	-1.44
Treasure County	-3.67	-3.03	-9.72	-3.77	-2.22
Yellowstone County	-0.61	3.47	-4.09	-1.41	5.87

Source: Montana Department of Revenue

jobs that have continued to grow throughout the recession, like those in the health care industry, in order to shorten their period of unemployment.

Aging Workforce

A longer-term challenge for the Montana economy is our aging workforce. According to the U.S. Census Bureau's population projections, the percentage of the Montana population that will be over the age of 65 is expected to reach 25% by 2030, making Montana one of the oldest states in the nation. The aging of our population will likely have obvious impacts on our economy, such as increased demand for health care, greater demand for the arts, and changes in state spending for both education and Medicare. The aging of the Montana population will likely drive changes in Montana's education system as well. There will be fewer young people graduating from Montana high schools and more non-traditional students in the Montana University System.

The aging of the population will also cause significant tightening of Montana's labor force. The U.S. Census Bureau's population projections indicate that the working age population in Montana (ages 18-65) will start to decrease starting in

2014, leaving businesses with fewer candidates for job openings. The recession has reduced the urgency posed by the changing demographics of Montana's workforce because of higher unemployment and because the loss of wealth during the recession has caused many workers to delay retirement. However, as our economy recovers, Montana's older workers will be leaving the workforce. Businesses need to plan for the loss of the knowledge and experience held by these workers and for the potential of a tight labor market in the future.



Federal ARRA Funds Awarded to Federal Agencies for Projects in Montana

Federal agency recovery awards granted in Montana as reported by recipients.

	Awards	Total Funds Awarded	Funds Per Capita	Funds Received	Local Amount	Jobs Reported
Corps of Engineers	83	31,119,433	32	12,052,085	23,750,292	125.58
Department of Agriculture	522	228,999,873	235	45,362,231	228,648,750	569.87
Department of Commerce	10	24,710,932	25	3,197,892	28,687,567	6.71
Department of Defense (except military departments)	3	940,714	1	891,041	940,714	
Department of Education	641	254,783,938	261	142,782,232	254,566,583	1,681.61
Department of Energy	137	98,884,317	101	25,668,316	125,125,460	209.27
Department of Health and Human Services	270	99,411,947	102	39,551,704	101,083,953	336.32
Department of Homeland Security	27	46,927,021	48	9,923,330	47,688,814	82.01
Department of Housing and Urban Development	50	40,575,921	42	26,026,787	40,575,921	278.39
Department of Justice	106	46,648,742	48	11,105,801	47,835,290	125.01
Department of Labor	60	20,950,269	21	13,009,832	18,718,090	95.82
Department of the Air Force	79	46,081,356	47	19,849,329	43,993,659	55.94
Department of the Army	1	2,527,200	3	2,137,556	2,527,200	11
Department of the Interior	211	121,136,937	124	72,050,481	121,150,873	641.28
Department of the Treasury	2	2,600,000	3	2,600,000	2,600,000	
Department of Transportation	164	292,750,431	300	206,123,442	290,768,051	965.16
Department of Veterans Affairs	12	4,647,311	5	528,439	4,647,311	6.02
Environmental Protection Agency	134	50,383,953	52	38,756,242	50,333,953	76.01
Executive Office of the President	1	13,574	0	13,574	13,574	
General Services Administration	47	66,616,969	68	5,491,124	54,870,279	31.46
National Aeronautics and Space Administration	3	99,784	0	99,784	218,958	0.44
National Foundation on the Arts and the Humanities	5	416,000	0	382,430	416,000	6.63
National Science Foundation	40	21,113,454	22	4,328,693	21,100,349	42.66
Other Independent Agencies	6	1,171,481	1	1,137,555	1,171,481	39.41
Unassigned	3	0	0	0	705,779	
Total	2,617	1,503,511,558	1,542	683,069,899	1,512,138,901	5,386.60

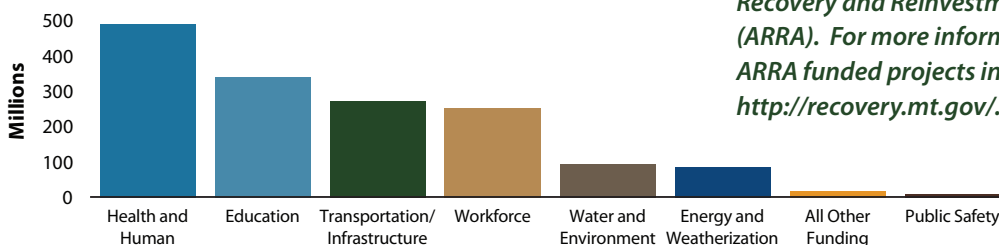
Source: Recovery.gov, November 2010

Broadband Technology Opportunity Program

Under the Broadband Technologies Opportunity Program (BTOP) and in partnership with the Bill & Melinda Gates Foundation, the Montana State Library will partner with 42 of Montana's public libraries to expand access to free, high-speed internet to 86% of the state's population by 2013. Though most local libraries have computers with internet access, many do not have enough computers, fast enough broadband speeds, or ADA-accessible computer facilities to provide adequate services for the thousands of Montanans who need it. As a result, library patrons currently have long wait times of up to two hours for computers, as well as unacceptably slow browsing speeds that inhibit library patrons' ability to apply for social services, find jobs, or complete research.

<http://www.msl.mt.gov/btop/>

Montana Reinvestment Act Project Categories



Source: <http://recovery.mt.gov/>, December 2010



2009 Montana ARRA Funds Awarded

County	Amount
Beaverhead	15,160,291
Big Horn	26,179,900
Blaine	11,507,677
Broadwater	4,472,857
Butte Silver Bow	49,695,135
Carbon	8,354,553
Carter	11,359,144
Cascade	78,805,111
Chouteau	3,243,647
Custer	10,868,688
Daniels	1,539,206
Dawson	9,272,730
Deer Lodge	9,141,378
Fallon	9,656,539
Fergus	14,960,424
Flathead	117,634,647
Gallatin	137,761,188
Garfield	726,212
Glacier	28,838,902
Golden Valley	715,716
Granite	3,382,894
Hill	20,518,576
Jefferson	25,233,220
Judith Basin	1,761,204
Lake	42,073,433
Lewis & Clark	72,455,559
Liberty	1,792,032
Lincoln	23,183,008
Madison	6,386,980
McCone	2,253,416
Meagher	7,682,950
Mineral	8,395,247
Missoula	141,742,279
Musselshell	3,633,199
Park	15,500,397
Petroleum	432,552
Phillips	12,798,377
Pondera	7,460,172
Powder River	1,243,929
Powell	16,419,596
Prairie	1,300,842
Ravalli	41,595,559
Richland	5,167,813
Roosevelt	24,451,178
Rosebud	15,271,410
Sanders	15,697,306
Sheridan	4,821,528
Stillwater	9,221,276
Sweet Grass	4,612,903
Teton	9,018,958
Toole	6,468,309
Treasure	460,621
Valley	5,686,257
Wheatland	1,636,591
Wibaux	1,871,705
Yellowstone	133,317,560
Pass through to states	16,188,675
Statewide	331,827,343
Unallocated	18,219,767

Source: www.recovery.mt.gov, November 2010

Demographics

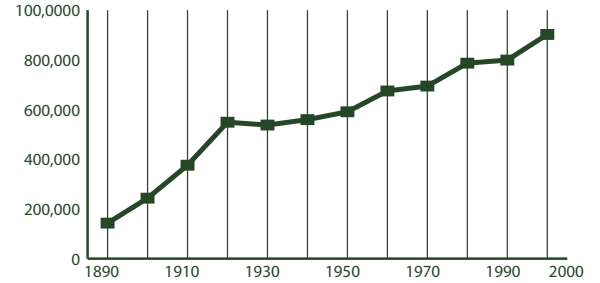
2008 Poverty and Median Income Estimates

Montana ranked 42nd among all U.S. states for median income in 2008.

	Median Household Income	% in Poverty All Ages	% in Poverty Ages < 18
United States	52,029	13.2	18.2
Montana	43,948	14.1	19.2
Custer County	39,859	16.2	21.6
Rosebud County	45,789	22.5	31.5
Treasure County	38,296	11.4	21.2
Yellowstone County	49,337	10.8	14.5

Source: U.S. Census Bureau, Small Area Estimates Branch

Montana Historic Population Growth 1890 - 2000 Censuses



Source: U.S. Census Bureau Population

Population Growth in Montana and Selected Counties

Montana's population density is about 6.5 persons per square mile.

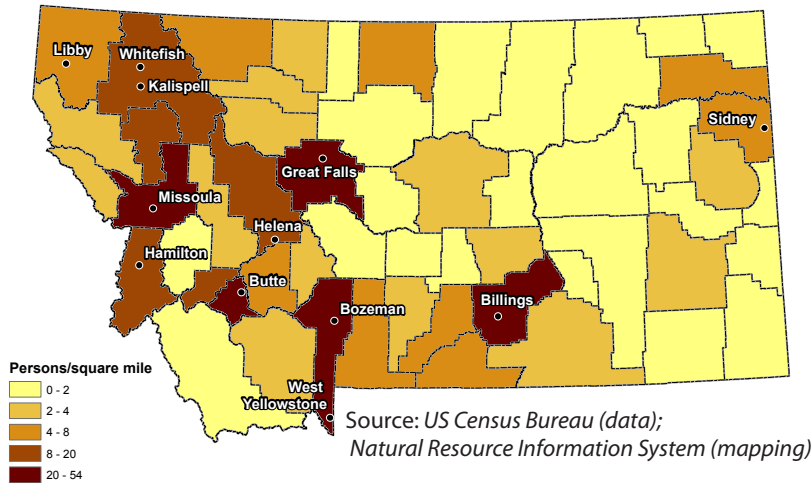
	2000 Census	2009 Estimate	Percent Growth
United States	281,421,906	307,006,550	.09
Montana	902,195	957,861	.08
Custer County	11,696	11,189	-4.33
Rosebud County	9,383	9,258	-1.33
Treasure County	861	612	-28.92
Yellowstone County	129,352	144,797	11.94

Source: U.S. Census Bureau

Look for preliminary 2010 Census data available from the US Census Bureau beginning in February, 2011 <http://2010.census.gov/>



2008 Population Density Estimates - Total Persons



2009 Population Estimates

Montana	
Male	487,981
Under 5 years	31,949
Under 18 years	112,780
18 to 64 years	310,778
65 years and over	64,423
Female	487,008
Under 5 years	30,489
Under 18 years	107,048
18 to 64 years	302,480
65 years and over	77,480
Total	974,989

Source: US Census Bureau, Population Estimates Program

Housing Units for Selected Counties

According to the U.S. Census Bureau, the total number of housing units in Montana increased 6.9% during this period.

	2000	2001	2002	2003	2004	2005	2006	2007	2008	2009	% Change
Custer County	5,360	5,369	5,364	5,359	5,355	5,361	5,358	5,354	5,357	5,344	-0.30
Rosebud County	3,912	3,931	3,935	3,941	3,940	3,953	3,947	3,943	3,952	3,946	0.87
Treasure County	422	422	422	422	421	422	421	420	419	418	-0.95
Yellowstone County	54,563	55,132	55,608	56,226	56,999	57,861	58,353	58,894	59,385	59,773	9.55

Source: U.S. Census Bureau, Population Estimates

Demographics

Corrections - Inmate Population

	2004	2005	2006	2007	2008	2009
Male Prison Beds	2,005	2,180	2,252	2,258	2,170	2,245
Montana State Prison - Deer Lodge	1,325	1,430	1,458	1,463	1,391	1,416
Great Falls Regional Prison	149	151	151	147	143	150
Dawson County Regional Prison - Glendive	140	141	142	142	141	143
Crossroads Correctional Center - Shelby	391	458	501	506	495	536
Actual population_male	2,005	2,180	2,252	2,258	2,170	2,245
Female Prison Beds	171	192	233	209	165	185
Montana Women's Prison - Billings	164	186	218	191	148	168
Intensive Challenge Program - MWP - Billings	7	6	15	18	17	17
Actual population_female	171	192	233	209	165	185

Source: Montana Department of Corrections, May 2010

Employment Status of Montana Women

In 2009, the Interagency Committee for Change by Women (ICCW) conducted a survey of women in the workforce. For more information visit <http://www.mdt.mt.gov/iccw/surveys/wwork.shtm>.

	1978	2009
Total Employed	45.30	94.7
Full-Time	30.50	84
Part-Time	14.80	10.6
Total Not Employed	54.60	5
Non-working	39.80	4.6
Retired	12.50	0.6
Disabled	2.3	0.1

Source: 2009 Survey of Women and Work

Montana Sexual or Violent Offender Registry Number of Convictions by Offense

Arson	94
Assault (including Aggravated Assault)	1,727
Dangerous Drugs	82
Family Offense	619
Homicide	138
Incest With A Minor	116
Kidnapping	76
Other	101
Robbery	536
Sex Offense	187
Sexual Assault	2,333
Total	6,004

Source: Department of Justice, Montana Sexual or Violent Offender Registry, September 2010

Veteran Population Projections

Montana is ranked second among the states for percent of the civilian population 18 years and over who are veterans. (13.9 percent, 2006-2008 American Community Survey)

	2000	2010	2020	2030
Montana	108,330	102,015	89,052	76,230
Custer County	1,537	1,300	924	699
Rosebud County	976	845	679	475
Treasure County	113	84	65	51
Yellowstone County	14,772	13,875	12,161	10,596

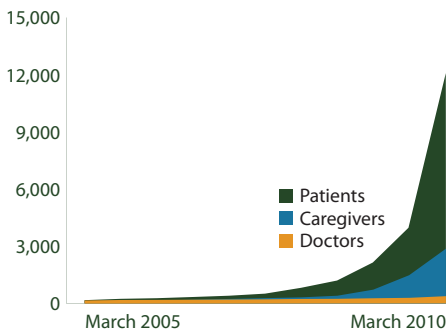
Source: United States Department of Veteran Affairs, October 2007

Montana Children and Social Services

	Children's Population 2008	Percent of Children in Poverty 2008	Free/Reduced Price Lunch Eligibles 2008/09	Daycare Program Participants* 2007	Special Education Program Enrollment 2008/09	Healthy Montana Kids Enrollment 2009	Medicaid Enrollment 2009
Montana	220,358	21.0	51,333	8,051	17,636	17,465	46,463
Custer County	2,532	21.6	615	210	233	175	504
Rosebud County	2,700	31.5	1,072	93	295	109	971
Treasure County	117	21.2	55	0	0	25	24
Yellowstone County	34,423	14.5	6,824	2,311	2,641	2,030	7,407

Source: MontanaKidsCount, <http://montanakidscount.org/> *facilities participating in state program

Montana Medical Marijuana Use Program



Source: Montana Medical Marijuana Program, June 2010

Temporary Assistance For Needy Families (TANF) Comparison

	2005 Cases	2005 Case Avg	2009 Cases	2009 Case Avg	Apr 2010 Cases	Apr 2010 Case Avg
Montana	4,820	356	3,466	392	3,784	426
Custer County	21	304	12	341	14	316
Rosebud County	200	372	192	402	177	435
Treasure County	0	0	0	0	0	0
Yellowstone County	649	358	531	399	642	445

Source: Montana Department of Public Health and Human Services, April 2010

Education

Schools in Senate District 22

There are 832 public K-12 and 14 private accredited schools in Montana. Montana also has 15 public, 6 private, and 7 tribal colleges. Senate and House district figures in the table below show the number of schools located in cities within 10 miles of the district's boundaries.

	Montana	Senate District 22	House District 43	House District 44
High Schools	173	69	27	52
Middle Schools	213	126	27	109
Elementaries	446	481	59	432
Total	832	676	113	593

Source: Office of Public Instruction, September 2010

Montana School Size and Enrollment 2009 - 2010

School Size	Percent of Schools	Enrollment	Percent of Enrollment
>500	6	42,927	30
250 to 499	19	56,027	40
100 to 249	19	26,444	19
50 to 99	14	8,563	6
<50	41	7,846	6
Total	100	141,807	100

Source: OPI Facts About Montana Education, September 2010

School Districts - Number of in Area

	Senate District 22	House District 43	House District 44
Elementary	15	11	2
Secondary	10	9	2
Unified	3	3	1
Total	28	23	5

Source: Montana Base Map Service Center, November 2009

Montana Dropout Rate - Percent of Total Enrollment

Grade / Gender	2004-05	2005-06	2006-07	2007-08	2008-09	5-yr Average
7 & 8 Total	0.2%	0.2%	0.3%	0.3%	0.3%	0.2%
Male	0.2%	0.2%	0.3%	0.3%	0.4%	0.3%
Female	0.1%	0.2%	0.3%	0.3%	0.2%	0.2%
HS Total	3.3%	3.6%	3.7%	5.2%	5.1%	4.2%
Male	3.6%	3.9%	4.2%	5.5%	5.6%	4.5%
Female	3.1%	3.3%	3.2%	4.8%	4.6%	3.8%
Overall Total	2.3%	2.5%	2.7%	3.6%	3.6%	2.9%
Male	2.5%	2.7%	3.0%	3.9%	3.9%	3.2%
Female	2.1%	2.3%	2.3%	3.4%	3.2%	2.6%

Source: Montana Statewide Graduate and Dropout Report, 2008 - 2009 School Year

2009 Youth Risk Behavior Survey - Percentage of Respondents

		1995	1997	1999	2001	2003	2005	2007	2009
Drove when drinking alcohol during the past 30 days	U.S.	15.4	16.9	13.1	13.3	12.1	9.9	10.5	9.7
	Montana	27.4	26.7	22.7	21.8	20.4	18.5	16.0	13.5
Rode with a driver who had been drinking alcohol during the past 30 days	U.S.	38.8	36.6	33.1	30.7	30.2	28.5	29.1	28.3
	Montana	48.1	46.6	43.1	39.3	36.9	34.4	32.9	28.8
Carried a weapon (gun, knife, or club) during the past 30 days	U.S.	20.0	18.3	17.3	17.4	17.1	18.5	18.0	17.5
	Montana	22.6	23.8	20.3	21.4	19.4	21.4	22.1	23.0
Current cigarette use (smoked cigarettes during the past 30 days)	U.S.	34.8	36.4	34.8	28.5	21.9	23.0	20.0	19.5
	Montana	34.8	38.1	35.0	28.5	22.9	20.1	20.0	18.7
Current alcohol use (drank alcohol during the past 30 days)	U.S.	51.6	50.8	50.0	47.1	44.9	43.3	44.7	41.8
	Montana	58.2	59.0	57.6	54.1	49.5	48.6	46.5	42.8
Binge drinking (5 or more drinks within a couple hours during the past 30 days)	U.S.	32.6	33.4	31.5	29.9	28.3	25.5	26.0	24.2
	Montana	43.1	44.4	43.6	41.4	37.3	34.4	32.7	30.1
Current marijuana use (used marijuana during the past 30 days)	U.S.	25.3	26.2	26.7	23.9	22.4	20.2	19.7	20.8
	Montana	20.1	26.9	25.5	27.1	23.1	22.3	21.0	23.1
Ever had sexual intercourse	U.S.	53.1	48.4	49.9	45.6	46.7	46.8	47.8	46.0
	Montana	47.0	45.9	42.5	43.9	43.6	43.6	45.7	47.6
Attempted suicide during the past 12 months	U.S.	8.7	7.7	8.3	8.8	8.5	8.4	6.9	6.3
	Montana	8.5	8.4	6.7	10.4	9.7	10.3	7.9	7.7

Source: U.S. Census Bureau

National Assessment of Education (NAEP) Progress Historical Performance in Montana Schools

Subject	Grade	Year	State Average	National Average
Mathematics (scale: 0-500)	4	1996 ⁿ	228	222
		2003	236	234
		2005	241	237
	8	2007	244	239
		2009	244	239
		1990 ⁿ	280	262
		1996 ⁿ	283	271
		2003	286	276
		2005	286	278
Reading (scale: 0-500)	4	1994 ⁿ	222	212
		1998	225	213
		2003	223	216
	8	2005	225	217
		2007	227	220
		2009	225	220
Science (scale: 0-300)	4	1998	271	261
		2003	270	261
		2005	269	260
	8	2007	271	261
		2009	270	262
		2000	164	148
Writing (scale: 0-300)	4	2000	160	145
		2005	160	149
		1996 ⁿ	162	148
8	2000	164	148	
	2005	162	147	
	2002	152	152	
	2007	157	154	

ⁿ Accommodations were not permitted for this assessment

Source: National Center for Education Statistics



Libraries

There are 761 libraries in Montana. Senate and House district figures in the table below show the number of libraries located in cities within 10 miles of the district's boundaries. For more detailed information on Montana's libraries visit http://www.msl.mt.gov/For_Librarians/Library_Directory/.

Source: *Montana State Library, November 2010*

	Montana	Senate District 22	House District 43	House District 44
Public	81	3	2	1
Branches	31	2	1	1
Bookmobiles	3	1	0	1
School	562	74	21	53
Academic	28	4	1	3
Special or Other	56	8	0	8
Total	761	93	25	67

Montana Talking Book Library

Services for Blind or Disabled Montanans

- In 2009-2010, our 5 employees and 100 volunteers provided FREE specialized library services, via mail or download, by circulating 259,382 books and materials to 4,173 blind or disabled Montana veterans and residents of all ages. Since 2009, we served an additional 1,097 more patrons - a 28% increase.
- Our patrons benefit from a variety of access options: the newest easy-to-use, accessible digital book program; free digital talking book machines delivered to patrons' homes; free eLibrary with 20,000 books to download; 63,000 additional book titles and 80 periodicals for loan in one or more formats; access to radio or phone newspaper services.
- Our Montana Recording Program has produced over 1,000 Montana books for all ages.
- Our Montana Braille /Twin Vision Program has produced over 442 books for Montana children.
- Special funding from the 2009 Legislature successfully provided patrons of MONTANA AUDIO Information Network (formerly Montana Radio Reading Service) and Montana Association for the Blind with improved access and expanded newspaper resources.



For more information:

<http://msl.mt.gov/tbl/> OR 1-800-332-3400

Senate and House district figures in the table below show the number of patrons located in cities within 10 miles of the district's boundaries.

	Montana	Senate District 22	House District 43	House District 44
Total Patrons	4,173	562	98	489
Veterans Who Are Patrons	409	38	3	36
Patron Count by Disability				
Blindness	1,212	130	21	116
Low Vision	2,129	338	44	304
Physical	350	56	16	42
Reading	482	38	17	27

Source: *Montana Talking Book Library*

Montana Public Libraries Fast Facts

- Montana's public libraries hold 3,348,859 items.
- Montanans visited their public libraries an average of five times throughout the year, for a total of 4,429,464 visits in 2009.
- Montana library patrons checked out 6,244,116 items in 2009, about seven items per person.
- Librarians in Montana's public libraries fielded 428,844 reference questions in SFY 2009, or 8,247 questions per week.
- 100% of all Montana libraries provide Internet access to patrons
- Nearly half of all Montanans (442,311) have a library card.

Montana Shared Catalog Statistics

The Montana Shared Catalog helps Montana libraries meet today's library users demands. It gives Montanans a rich and easy-to-use catalog including more than 3.3 million items which patrons circulated 4,178,877 times in SFY 2010. Additional groups that partner to share their catalogs include the 4 Rivers, BridgerNet, and Partners groups. Senate and House district figures below show the number of libraries located in cities within 10 miles of the district's boundaries.



Havre-Hill County library director, Bonnie Williamson, using the Montana Shared Catalog system to check out a book to a patron.

Montana Shared Catalog Senate District 22 Public and Branch Libraries

Bicentennial Library of Colstrip, *Colstrip*
Community Library 3803 Central Ave at MSU-B COT Campus, *Billings*
Miles City Public Library, *Miles City*
Parmly Billings Library, *Billings*
Rosebud County Library, *Forsyth*

	Montana	Senate District 22	House District 43	House District 44
Participating Libraries	132	15	5	10
Patrons	364,554	60,759	8,309	52,450
Items	3,325,517	514,117	149,787	364,330
Partner Group Libraries	28	6	6	0

Statewide Library Training

The Montana State Library's consultants travel throughout Montana and meet one-on-one with librarians and library trustees across the state, assisting with everything from training and technology to applying Montana library law and fundraising basics. In the last fiscal year, MSL's consultants traveled over 60,000 miles, made over 2,000 contacts and completed over 400 visits with Montana's library community.

Total Attendees	1,321
Number of Workshops	113
Number of different Montana locations	63

Time period: January 2009 - December 2010

Source: *Montana State Library*



Statewide Library Resources

The Montana State Library works on behalf of all Montana libraries to help them provide the latest and best information and library services to their patrons – your constituents. We negotiate on behalf of libraries across the state to get the best rate on cutting-edge library products and services, on which many Montanans depend for everything from making health care decisions to finding a job. Examples include our statewide contract with OCLC, a worldwide consortium of libraries dedicated to providing top-notch library services and a subscription to the genealogy database, HeritageQuest which is available to all public libraries in the state. Without statewide library projects, some of which are listed here, many Montanans would be left behind in this age of information.

Statewide Databases

Thanks to an allocation from the Montana legislature, the Montana State Library offers statewide databases to all Montana library patrons. Access to this completely online collection – accessible in the library, at home, or on a mobile device – includes hundreds of databases and thousands of full text articles on everything from business resources to health information.

Ready 2 Read

The Montana State Library's Ready 2 Read program is designed to help parents and caregivers understand the value of sharing language and literacy with their children and the importance these skills play throughout a person's life. So far, 45 libraries have received extensive early childhood training and a large number of materials to serve Montana's youngest library patrons; additionally these 45 libraries now offer programming just for children ages 0 – 3.



<http://ready2readmontana.org/>

Courier Pilot Project

As access to quality information has become a vital part of our lives, the Montana State Library is working on a number of ways for libraries to share information and materials affordably and dependably. One of these methods is the Montana Courier Project, which uses a commercial courier service to ship library materials and resources around the state. As the pilot participation has grown, participating libraries are seeing increasingly significant savings in the cost of moving library materials around the state.

Participating Libraries

Senate and House district figures in the table below show the number of libraries located in cities within 10 miles of the district's boundaries.

	Montana	Senate District 22	House District 43	House District 44
Statewide Databases	762	89	25	68
OCLC	250	46	6	40
Courier Project	34	0	0	0
MontanaLibrary2Go	48	4	3	1
HeritageQuest	86	4	3	1
Montana Memory Project	15	5	2	3

Source: Montana State Library

Montana's Cultural Heritage

In partnership with the Montana Historical Society and other partners, the Montana State Library helps to ensure that Montanans have ready access to our Montana cultural heritage. The Montana Memory Project provides online access to digitized copies of historic as well as contemporary material that serve as a resource for education, business, pleasure, and lifelong learning. <http://mtmemory.org/>



First train from St. Paul, over the last spike enroute to Portland, OR. September 8, 1883
Montana Historical Society Photo Archives
Montana Memory Project

Additionally, the Montana State Library launched the online companion to the Montana Historical Society's *Montana Place Names: From Alzada to Zortman*. This web mapping application makes discoverable the history of more than 1,200 Montana place names and includes all the photos and descriptions found in the book. <http://mtplacenames.org/>

State Publications Available Online!

The Montana State Library is digitizing our legacy print state publications collection of 55,000 publications dating to 1874. To date, nearly one million pages have been digitized. All of these publications are available online in a variety of formats at <http://statepublications.mt.gov>. Use of these items is 250 times more frequent than traditional print.

Montana Library 2 Go

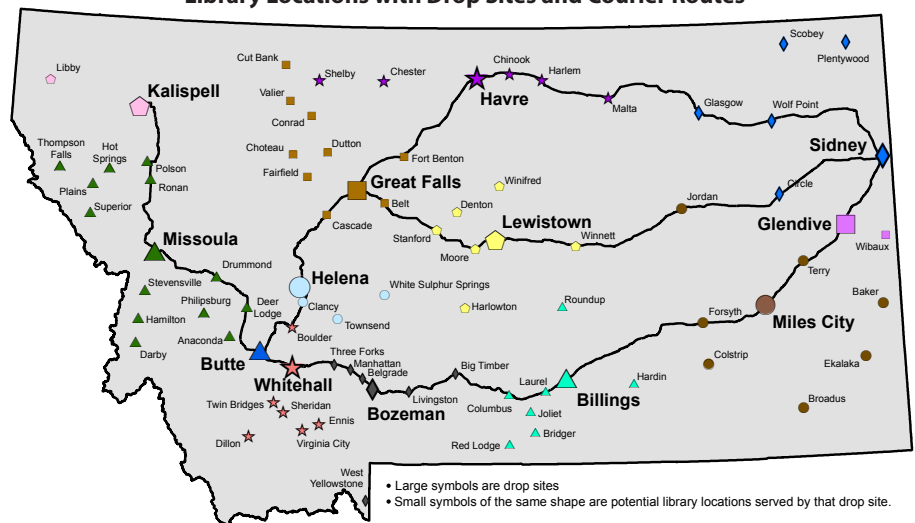
Montana library patrons are reading more books on mobile devices than ever before and Montana libraries are delivering the goods with Montana Library 2 Go, a collection of downloadable audio and E-book titles to patrons of participating libraries. Titles are available for download on MP3 players, iPods, iPads and other playing and reading devices.

GIS Portal

Funded by the 2007 Legislature and first launched in 2008, the Montana GIS Portal serves as Montana's primary online resource to discover geospatial data. The Portal provides online access to hundreds of datasets in a variety of formats for use in maps, web mapping applications and geospatial analyses. <http://gisportal.msl.mt.gov/>

Montana Library Courier/Delivery Service Pilot

Library Locations with Drop Sites and Courier Routes



Source: Montana State Library, December 2010

Land

Land Ownership

Senate District 22 ranks number 18 in size and is 3,478.010 square miles, or about 2% of Montana's total land area (146,923.321 square miles). The average senate district in Montana is 2,938 square miles and the average house district is 1,469 square miles.

Owner	Montana		Senate District 22		House District 43		House District 44	
	Area (Sq Mi)	%	Area (Sq Mi)	%	Area (Sq Mi)	%	Area (Sq Mi)	%
Private	95,738	65	3,042	87	2,967	87	75	94
Local Government	32	< 1	0	0	0	0	0	0
Montana Fish, Wildlife and Parks	470	< 1	2	< 1	2	< 1	< 1	< 1
State Trust Land	8,020	5	183	5	182	5	1	2
Other State Land	89	< 1	< 1	< 1	< 1	< 1	0	0
US Bureau of Land Management	12,451	8	157	5	154	5	3	4
US Fish and Wildlife Service	1,373	< 1	0	0	0	0	0	0
US Forest Service	26,317	18	0	0	0	0	0	0
US National Park Service	1,829	1	0	0	0	0	0	0
Other Federal Land	318	< 1	61	2	61	2	0	0
Total	146,923		3,478		3,399		79	

Source: Montana Natural Heritage Program, July 2010

Private Land Agricultural Use

Owner	Montana		Senate District 22		House District 43		House District 44	
	Acres	%	Acres	%	Acres	%	Acres	%
Continuous Crop	25,468	< 1	0	0	0	0	0	0
Fallow Crop	13,281,791	16	98,256	4	95,864	4	2,392	5
Farmstead	0	0	0	0	0	0	0	0
Grazing	49,048,154	59	2,162,267	79	2,131,410	80	30,856	69
Irrigated	5,220,163	6	359,683	13	350,330	13	9,352	21
Timber	14,168,777	17	70,584	3	68,997	3	1,587	4
Wild Hay	1,097,282	1	31,947	1	31,263	1	684	2
Total	82,841,635		2,722,736		2,677,865		44,871	

Source: Montana Department of Administration Information Technology Services Division - Geographic Information Services, October 2010

Conservation Easements (Acres)

	Montana	Senate District 22	House District 43	House District 44
	Bitter Root Land Trust	2,422	0	0
City Government	601	0	0	0
Clark Fork- Pend Oreille Conservancy	151	0	0	0
County Government	528	0	0	0
Ducks Unlimited (Wetlands America Trust)	16,979	0	0	0
Five Valleys Land Trust	37,763	0	0	0
Flathead Land Trust	8,054	0	0	0
Gallatin Valley Land Trust	36,149	0	0	0
Montana Department of Transportation	938	0	0	0
Montana Fish, Wildlife, and Parks	384,984	25,354	25,306	48
Montana Land Reliance	831,566	34,999	33,454	1,545
National Wildlife Federation	20	0	0	0
Prickly Pear Land Trust	3,246	0	0	0
Rattlesnake Land Trust	190	0	0	0
Rocky Mountain Elk Foundation	49,220	0	0	0
Salish and Kootenai Tribe	102	0	0	0
The Bighorn Institute	1,443	0	0	0
The Nature Conservancy	309,443	0	0	0
The Vital Ground Foundation	833	0	0	0
US Bureau of Reclamation	42	0	0	0
US Department of Agriculture	17,652	0	0	0
US Fish and Wildlife Service	232,456	0	0	0
US Forest Service	20,038	0	0	0
Total	1,955,555	60,353	58,759	1,593

Source: Montana Natural Heritage Program

Montana Spatial Data Infrastructure

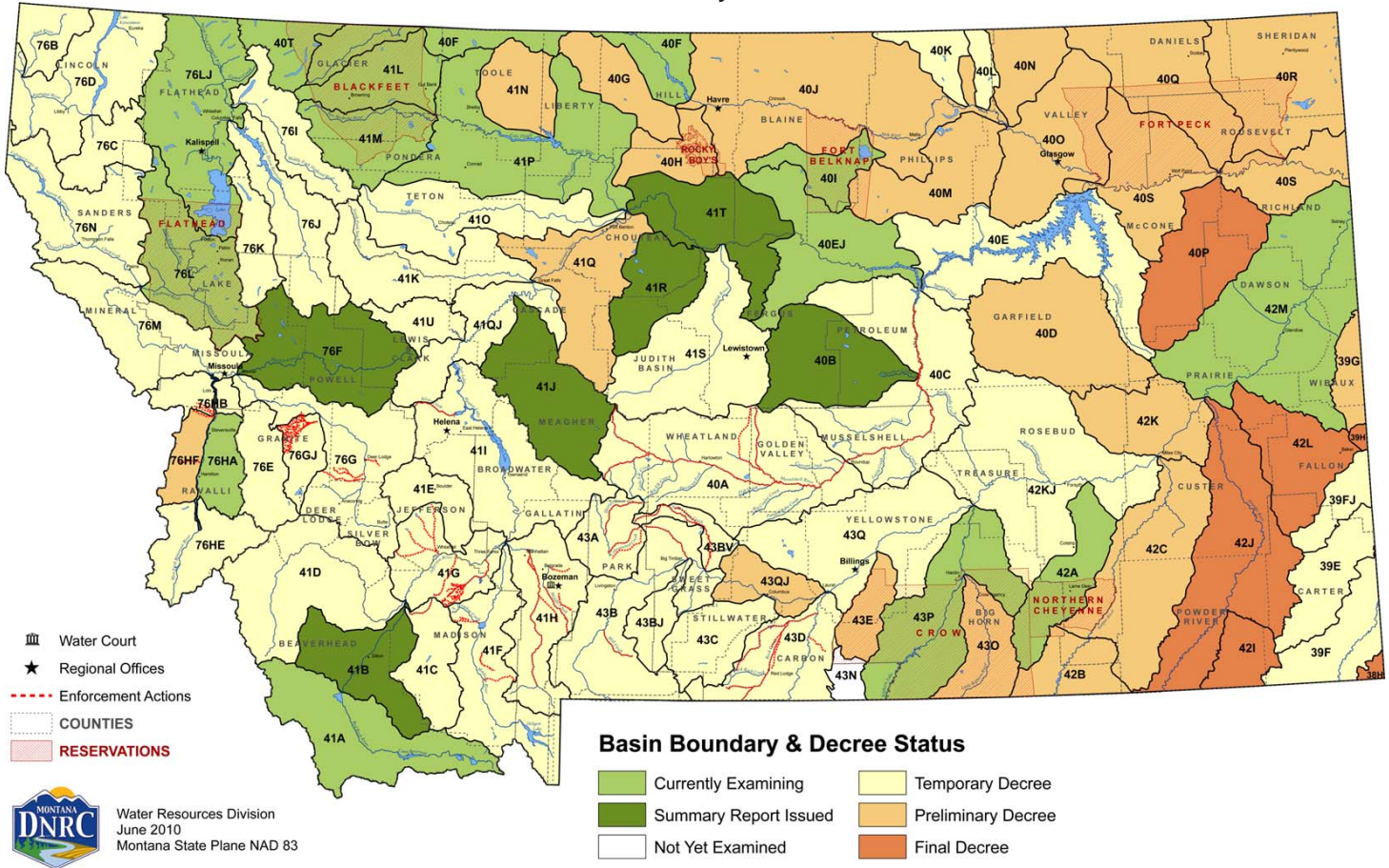
The Montana Spatial Data Infrastructure (MSDI) is a digital representation of Montana's physical and cultural landscape that allows the state to be mapped. Some of the individual components of the MSDI are roads, lakes and streams, land ownership, administrative boundaries, soils, land use, structures, aerial photographs, watersheds, wetlands, elevation, and geology.

This information is fast becoming a critical element for policy review at the state and local levels in both the public and private sectors. For more information see: <http://giscoordination.mt.gov/>.



The Department of Natural Resources and Conservation maintains a database of water rights to assist Montana citizens and the Montana Water Court in the water rights adjudication process. Visit their site at http://dnrc.mt.gov/wrd/water_rights/.

Basin Location and Adjudication Status



Dams in Senate District 22

There are 3,666 dams in the national inventory of dams for Montana. Predominant uses are stock/farm ponds (48%) and irrigation (22%). Additional dams not included in the inventory can be found by searching for water rights.

Source: *National Inventory of Dams, USGS Geographic Names Information System, September 2003*

Type	Montana	Senate District 22	House District 43	House District 44
Debris Control	1	0	0	0
Fish and Wildlife Pond	1	0	0	0
Flood Control	43	0	0	0
Hydroelectric	26	0	0	0
Irrigation	822	4	4	0
Recreation	54	0	0	0
Stock/Small Farm Pond	1,771	59	57	2
Tailings	8	0	0	0
Water Supply	44	0	0	0
Other	68	4	4	0
Unknown	828	5	5	0
Total	3,666	72	70	2

Public Water Supplies

There are 3,266 public water supplies located in the State of Montana, 41 of which are located in Senate District 22. These figures do not include public water supplies serving Native American nations.

	Count
House District 43	
Public, community	11
Public, non-community, non-transient	1
Public, transient	21
House District 44	
Public, community	6
Public, transient	2

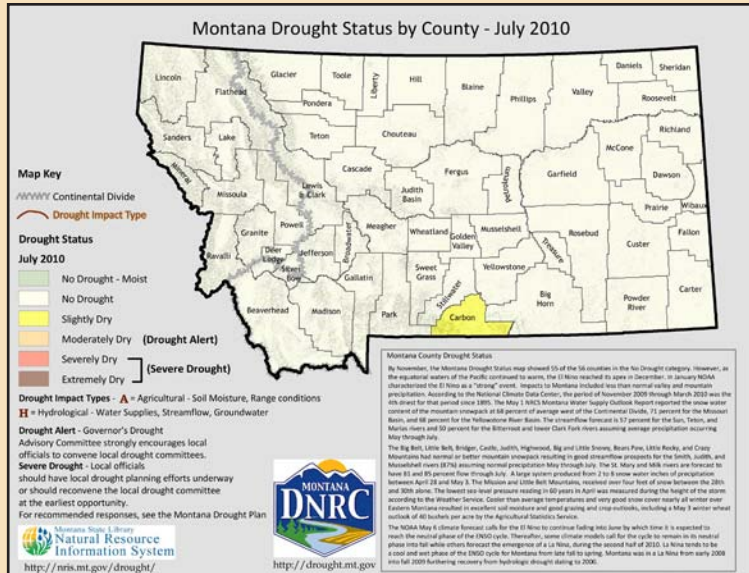
Source: *Department of Environmental Quality, December 2007*



Montana Drought Resources

The Montana Governor's Drought Advisory Committee is charged with monitoring, forecasting, and reporting water supply and moisture conditions, enabling Montanans to make timely and informed decisions to mitigate drought impacts in a proactive manner.

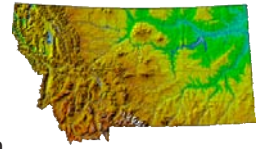
For up-to-date information and maps on Montana's current drought situation visit <http://drought.mt.gov/>.



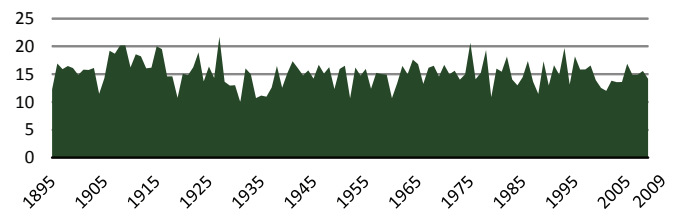
Source: Natural Resource Information System

Montana Digital Atlas

Additional mapping and data capabilities are available through the Montana State Library at <http://nris.mt.gov/>. The Montana Digital Atlas provides unlimited access to detailed information on such issues as climate, environmental impacts, land information, water, and cultural data.



Montana Annual Precipitation in Inches (1895 - 2009)



Source: NOAA Satellite and Information Service

Montana Fires 2002 - 2008

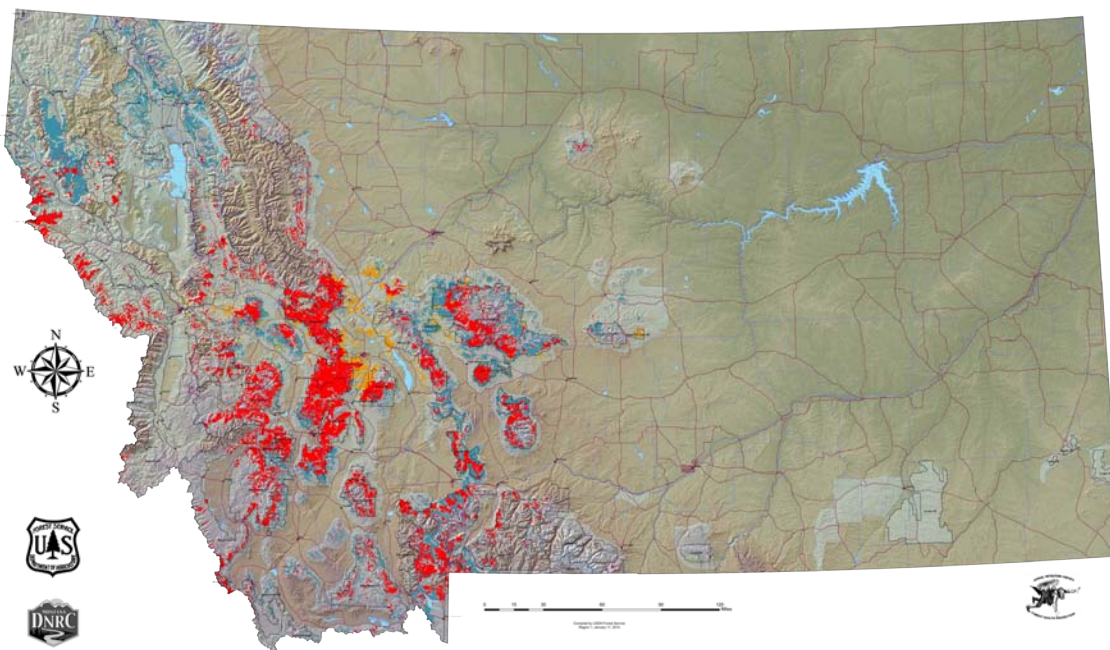
All Fires As Reported by All Agencies

Year	Count	Acreage
2002	1,372	110,309
2003	2,326	736,809
2004	1,447	18,445
2005	1,316	103,294
2006	2,302	1,047,118
2007	1,875	778,079
2008	1,424	166,842

Source: Department of Natural Resources and Conservation

2009 Aerial Detection Survey Data - Insect and Disease Outbreaks in Montana

As Detected by Forest Health Protection's (FHP) Aerial Insect and Disease Detection Survey - USDA Forest Service.



Disclaimer

The sources of the digital map layer used to compile the base map upon which the insect and disease data are presented vary in both source and scale, therefore, accuracy is not guaranteed.

The insect and disease data should be used only as an indicator of insect and disease activity, and should be ground-truthed for actual location and causal agent. Polygons indicate locations of tree mortality, defoliation, and/or other damage. Intensity of damage is variable, and not all trees and areas indicated are dead or damaged. The joint cooperators reserve the right to correct, modify, update, or replace the data as necessary. Using this data for purposes other than those for which it was intended may yield inaccurate or misleading results.

Oil and Gas Wells in Senate District 22

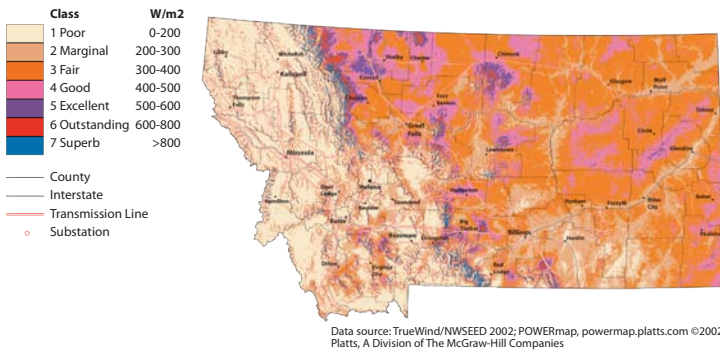
	Montana	Senate District 22	House District 43	House District 44
Coal Bed Methane, Active	1,117	0	0	0
Coal Bed Methane, Inactive	40	0	0	0
Gas, Active	7,351	2	2	0
Gas, Inactive	2,509	1	1	0
Gas Storage, Active	272	0	0	0
Gas Storage, Inactive	14	0	0	0
Injection, Active	1,109	3	3	0
Injection, Inactive	749	0	0	0
Oil, Active	7,230	16	16	0
Oil, Inactive	4,511	22	22	0
Total	24,902	44	44	0

Source: Montana Board of Oil and Gas Conservation, October 2008

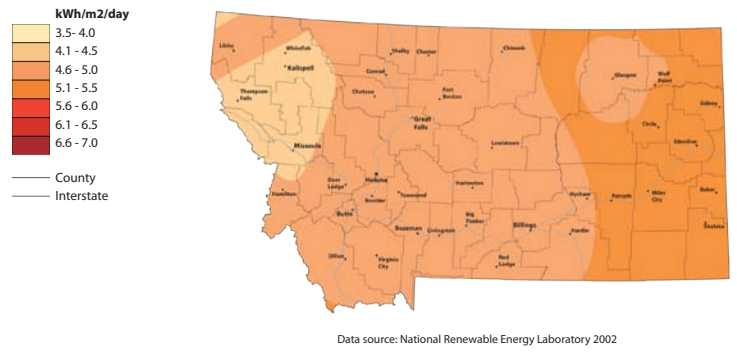
Additional information about oil and gas wells is available through the Board of Oil and Gas Conservation's WebMapper which can be accessed at <http://bogc.dnrc.mt.gov/>.

Energy Atlas

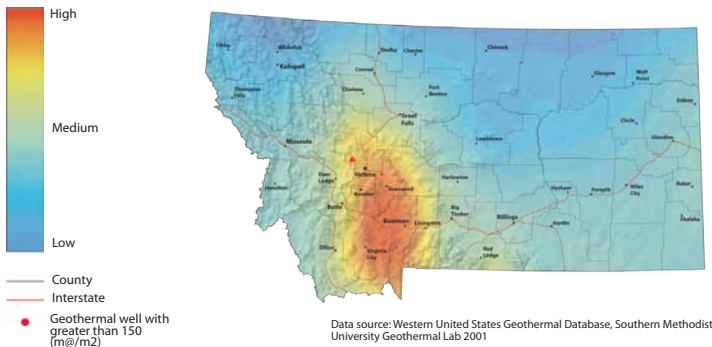
Wind Power at 50 Meters - Wind Power Density



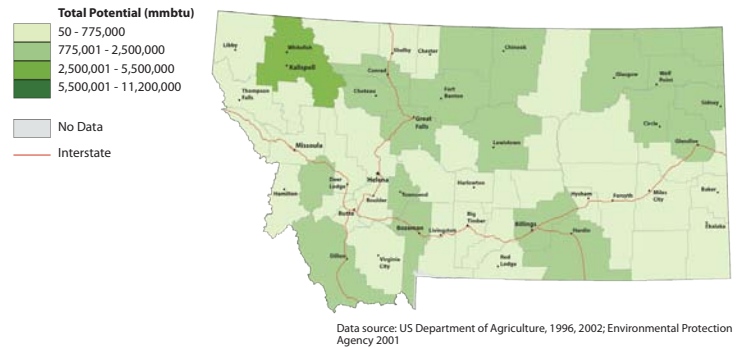
Solar Insolation Annual Average



Geothermal Potential



Total Energy Potential from Biomass Residue



Find additional energy related data and maps at <http://www.energyatlas.org/>

Pipelines in Senate District 22

	Montana		Senate District 22		House District 43		House District 44	
	Count	Miles	Count	Miles	Count	Miles	Count	Miles
Crude Oil	90	1,970	4	42	2	32	2	10
Natural Gas	360	3,301	7	98	6	97	1	1
Refined Product	47	805	3	107	1	93	2	13
Other	24	402	0	0	0	0	0	0
Total	521	6,477	14	247	9	223	5	24

Source: Pipeline Integrity Management Mapping Application, December 2006

Abandoned Mines and Remediation Sites

	Abandoned Mines	Remediation Sites
Montana	6,954	765
Senate District 22	74	23
House District 43	74	8
House District 44	0	15

Source: Montana Department of Environmental Quality, November 2010

Montana House Heating Fuel

	Occupied housing units	
Utility gas	373,455	100%
Bottled, tank, or LP gas	215,172	57.6%
Electricity	49,291	13.2%
Fuel oil, kerosene, etc.	66,504	17.8%
Fuel oil, kerosene, etc.	7,126	1.9%
Coal or coke	841	0.2%
Wood	29,473	7.9%
Solar energy	235	0.1%
Other fuel	4,064	1.1%
No fuel used	749	0.2%

Source: 2006-2008 American Community Survey 3-Year Estimates

Wildlife and Recreation

Species Diversity in Senate District 22

	Montana (Count)	Senate District 22 (Count)	% of Montana Species
Amphibians	13	8	62
Birds	328	259	79
Fish	81	51	63
Mammals	107	67	63
Reptiles	17	14	82

Source: Montana Natural Heritage Program

Recreation Area (Acres)

	Senate District 22
Fishing Access Sites	309
Fishing Conservation Areas	0
State Parks	38
Wildlife Conservation Easements	0
Wildlife Protection Areas	0
Wildlife Management Areas	1,455
Total	1,802

Source: Montana Fish, Wildlife, and Parks

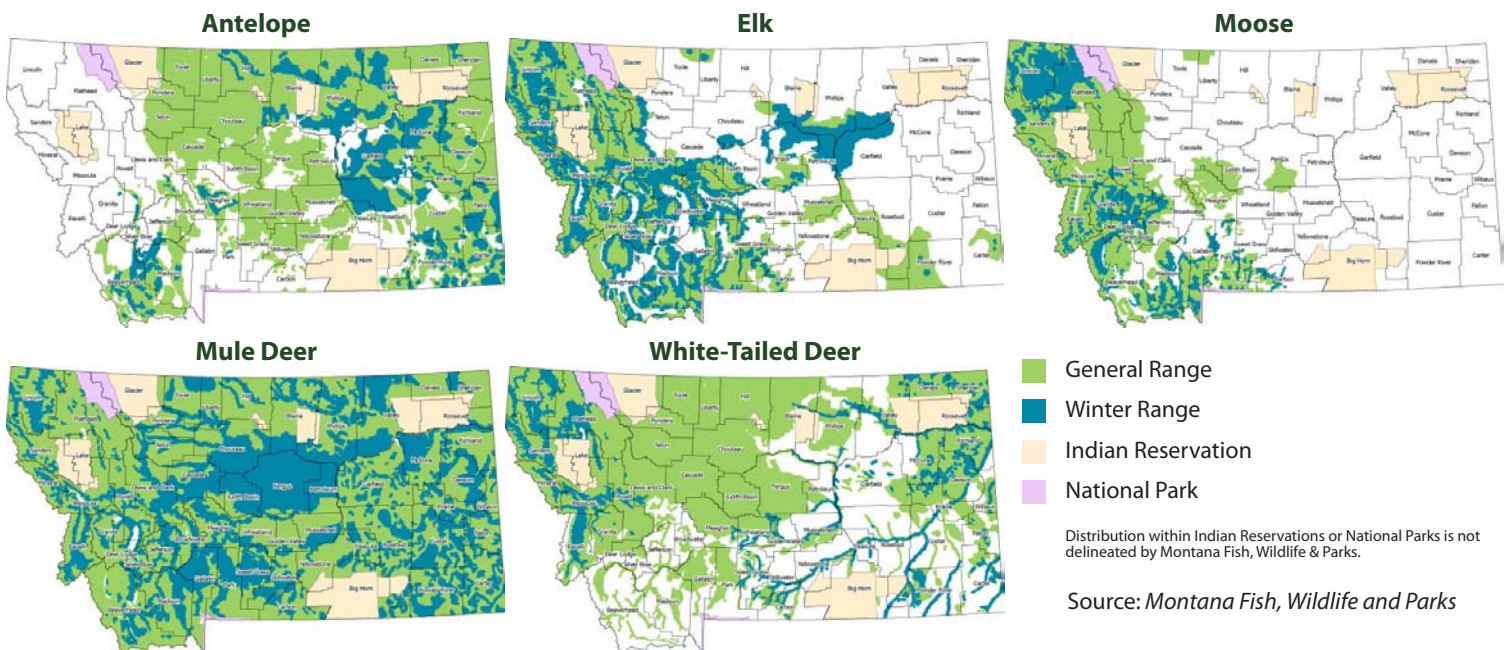
Block Management Acreage

There are a total of 7,522,358 acres of Block Management land (excluding Plum Creek*) in the State of Montana. 347,976.00 of those acres or 5% are located in Senate District 22.

*Plum Creek land in FWP's Regions 1 and 2 are not included in these statistics. Although they are part of the Block Management Program, they are not traditional BMA's and are managed differently.

Source: Montana Fish, Wildlife and Parks

Big Game Distribution



Montana is blessed with a wealth of wildlife and habitat diversity. These resources provide exceptional opportunities for recreation and contribute substantially to the state's economy and quality of life.

Wildlife Highlights

For more information on animals, plants, and habitats in your Senate District, visit the Montana Natural Heritage Program at <http://mtnhp.org>. Resources include:

- Montana Field Guide - an encyclopedia of the distribution, status, and biology of Montana's animals, plants, and biological communities
- Natural Heritage Tracker and Map Viewer – interactive maps of animals, plants, land cover, and land stewardship
- Land Stewardship Maps – public lands, conservation easements, and special designations
- Wetland and riparian mapping information
- Reports on Montana's Species of Concern
- Quick responses to data requests and answers from expert scientists on Montana's plants, animals, and biological communities.

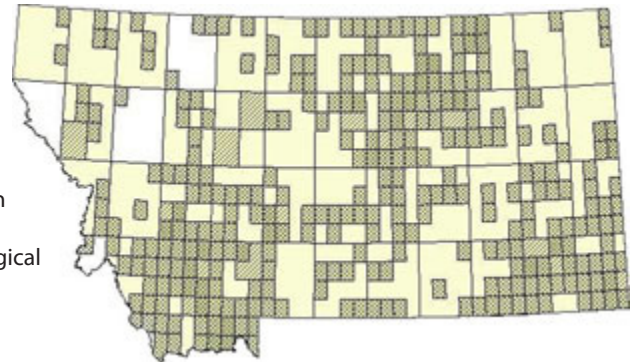
Brewer's Sparros

Spizella breweri



The Brewers Sparrow nests in sagebrush habitats across Montana where they forage for insects and seeds to support 3-4 young. During winter, individuals migrate to the southwestern United States and Mexico.

Spizella breweri General Observations Range



Source: Montana Natural Heritage Program

Senate District 22 Libraries and Digital Library Resources

Public

Bicentennial Library of Colstrip

MaryKay Bullard, Branch Librarian
Rosebud County
PO Box 1947 Colstrip, MT 59323
(406) 748-3040
Catalog: <http://mtscprod.msl.mt.gov/uhtbin/cgisirsi/x/0/0/49>
Montana Shared Catalog, MyMontanaLibrary2Go, HeritageQuest, Statewide Databases



Laurel Public Library

Nancy Schmidt, Library Director
Yellowstone County
PO Box 68 Laurel, MT 59044
(406) 628-4961
Web Site: <http://www.laurelpubliclibrary.org>
Catalog: <http://mtscprod.msl.mt.gov/uhtbin/cgisirsi/x/0/0/49>
Montana Shared Catalog, OCLC, HeritageQuest, Statewide Databases



Miles City Public Library

Sonja Woods, Library Director
Custer County
One South Tenth Street Miles City, MT 59301
(406) 234-1496
Web Site: <http://www.milescitypubliclibrary.org>
Catalog: <http://mtscprod.msl.mt.gov/uhtbin/cgisirsi/x/0/0/49>
Montana Shared Catalog, Partners Group, OCLC, MyMontanaLibrary2Go, HeritageQuest, Montana Memory Project Participant, Statewide Databases

Parmly Billings Library

Bill Cochran, Library Director
Yellowstone County
510 North Broadway Billings, MT 59101
(406) 657-8258
Web Site: <http://www.billings.lib.mt.us/>
Catalog: <http://mtscprod.msl.mt.gov/uhtbin/cgisirsi/x/0/0/49>
Montana Shared Catalog, OCLC, MyMontanaLibrary2Go, HeritageQuest, Montana Memory Project Participant, Statewide Databases



Rosebud County Library

Cheryl Hesper, Library Director
Rosebud County
PO Box 7 Forsyth, MT 59327
(406) 346-7561
Web Site: <http://sites.google.com/site/rosebudlib>
Catalog: <http://mtscprod.msl.mt.gov/uhtbin/cgisirsi/x/0/0/49>
Montana Shared Catalog, OCLC, HeritageQuest, Statewide Databases

Academic

Dr. John Woodenlegs Memorial Library

Joan Hantz, Library Director
Rosebud County
PO Box 98 Lame Deer, MT 59043
(406) 477-8293
Web Site: <http://www.cdkc.edu>
Catalog: <http://isbn.lib.montana.edu/uhtbin/cgisirsi/x/0/0/49>
OMNI System, OCLC, Statewide Databases

Ida Owen Dockery Library

Andrea Todd, Library Director
Yellowstone County
1515 Shiloh Road Billings, MT 59106
(406) 656-9950
OCLC, Statewide Databases



Judson H. Flower Jr. Library

Ann Rutherford, Library Director
Custer County
2715 Dickinson Street Miles City, MT 59301
(406) 874-6105
Web Site: <http://mccolinerference.pbworks.com/>
Catalog: <http://mtscprod.msl.mt.gov/uhtbin/cgisirsi/x/0/0/49>
Montana Shared Catalog, Partners Group, OCLC, MyMontanaLibrary2Go, Montana Memory Project Participant, Statewide Databases

Paul M. Adams Memorial Library

Bill Kehler, Library Director
Yellowstone County
Billings, MT 59102
(406) 657-1087
Web Site: <http://library.rocky.edu>
Catalog: <http://isbn.lib.montana.edu/uhtbin/cgisirsi/x/0/0/49>
OMNI System, OCLC, Montana Memory Project Participant, Statewide Databases

Bookmobile

Parmly Billings Library Bookmobile

Bill Cochran, Library Director
Yellowstone County
510 North Broadway Billings, MT 59101
(406) 657-8257
Web Site: <http://www.billings.lib.mt.us/>
Catalog: <http://mtscprod.msl.mt.gov/uhtbin/cgisirsi/x/0/0/49>
Montana Shared Catalog, OCLC, Statewide Databases

Institutional

Montana Women's Prison

Associate Warden, Library Director
Yellowstone County
701 South 27th Billings, MT 59101
(406) 247-5100
Statewide Databases

School

Alkali Creek Elementary School

Andrea Meyer, Librarian
Yellowstone County
681 Alkali Creek Rd Billings, MT 59105
(406) 281-6847
Web Site: <http://library.billings.k12.mt.us/alkalicreek.library.html>
Catalog: http://library.billings.k12.mt.us/Billings_Schools, *OCLC, Statewide Databases*

Arrowhead Elementary School

Mari Jane Orner, School Librarian
Yellowstone County
2510 38th St W Billings, MT 59102
(406) 281-6408
Billings Schools, OCLC, Statewide Databases

Ashland Public School

Laura Meza, School Librarian
Rosebud County
PO Box 17 Ashland, MT 59003
(406) 784-2568
Montana Shared Catalog, OCLC, Statewide Databases

Beartooth Elementary School

Audrey O'Brien, School Librarian
Yellowstone County
1345 Elaine Street Billings, MT 59105
(406) 294-0550
Billings Schools, OCLC, Statewide Databases

Bench Elementary School

Margot LaFontaine, School Librarian
Yellowstone County
505 Milton Rd Billings, MT 59105
(406) 281-6320
Web Site: http://www.billings.k12.mt.us/Billings_Schools, *OCLC, Statewide Databases*

Big Sky Elementary School

Sharon Drake, School Librarian
Yellowstone County
3231 Granger Ave E Billings, MT 59102
(406) 655-3115
Billings Schools, OCLC, Statewide Databases

Billings Career Education Center

Denise Grewell, Media Specialist
Yellowstone County
3723 Central Avenue Billings, MT 59102
(406) 281-5345
Web Site: <http://bcc.billings.k12.mt.us/library/index.html>
Catalog: <http://library.billings.k12.mt.us/uhtbin/cgisirsi/Wed+Oct++3+14:29:33+MDT+2001/0/49>
Billings Schools, OCLC, Statewide Databases

Billings Central Catholic**High School Library**

Jane Ray, Library Media Specialist
Yellowstone County
3 Broadwater Ave Billings, MT 59101
(406) 245-6651
Web Site: <http://www.billingscatholicsschools.org>
Montana Shared Catalog, OCLC, Statewide Databases

Billings Public School Libraries (SD#2)

Peggy Smith, Librarian
Yellowstone County
415 N 30th Street Billings, MT 59101
(406) 247-3790
Web Site: <http://www.billings.k12.mt.us/>
Catalog: <http://library.billings.k12.mt.us/uhtbin/cgisirsi/Wed+Oct++3+14:29:33+MDT+2001/0/49>
OCLC, Statewide Databases

Billings Senior High School

Lyn McKinney, School Librarian
Yellowstone County
425 Grand Ave Billings, MT 59101
(406) 281-5442
Web Site: <http://www.billings.k12.mt.us/>
Catalog: <http://senior.billings.k12.mt.us/senior/library/index.php>
Billings Schools, OCLC, Statewide Databases

Billings West High School

Kathrine Field, School Librarian
Yellowstone County
2201 St Johns Ave Billings, MT 59102
(406) 281-5753
Web Site: <http://www.billings.k12.mt.us/>
Catalog: <http://library.billings.k12.mt.us/uhtbin/cgisirsi/Wed+Oct++3+14:29:33+MDT+2001/0/49>
Billings Schools, OCLC, Statewide Databases

Birney Elementary

Joan Malmquist, School Librarian
Rosebud County
PO Box 521 Birney, MT 59012
(406) 984-6247
OCLC, Statewide Databases

Bitterroot Elementary School

Kathi Hoyt, School Librarian
Yellowstone County
1801 Bench Blvd Billings, MT 59105
(406) 255-3825
Billings Schools, OCLC, Statewide Databases

Blue Creek School Library

Deedee Grubbs, Library Elementary Staff Member
Yellowstone County
3652 Blue Creek Rd Billings, MT 59101
(406) 259-0653
Web Site: <http://www.bluecreek.k12.mt.us>
OCLC, Statewide Databases

Boulder Elementary School

Roberta Fuller, School Librarian
Yellowstone County
2202 32nd St W Billings, MT 59102
(406) 281-6621
Web Site: <http://www.billings.k12.mt.us/>
Billings Schools, OCLC, Statewide Databases

Broadview Public Schools

Gail Erickson, School Librarian
Yellowstone County
PO Box 147 Broadview, MT 59015
(406) 667-2337
OCLC, Statewide Databases

Broadwater Elementary School

Don Casey, School Librarian
Yellowstone County
Billings, MT 59102
(406) 281-6437
Web Site: <http://billings.k12.mt.us/bwater>
Catalog: <http://library.billings.k12.mt.us/uhtbin/webcat>
Billings Schools, OCLC, Statewide Databases

Burlington Elementary School

Kathi Hoyt, School Librarian
Yellowstone County
2135 Lewis Ave Billings, MT 59102
(406) 655-3119
Billings Schools, OCLC, Statewide Databases

Canyon Creek School

Sandra Pena, Librarian
Yellowstone County
3139 Duck Creek Rd Billings, MT 59101
(406) 656-4471
OCLC, Statewide Databases

Castle Rock Middle School

Karin Green, School Librarian
Yellowstone County
1441 Governors Blvd Billings, MT 59105
(406) 237-6641
Web Site: <http://www.billings.k12.mt.us/>
Billings Schools, OCLC, Statewide Databases

Central Heights Elementary School

Rita Evans, School Librarian
Yellowstone County
120 Lexington Billings, MT 59102
(406) 655-3121
Billings Schools, OCLC, Statewide Databases

Colstrip High School

Susan DeJarnett, School Librarian
Rosebud County
PO Box 159 Colstrip, MT 59323
(406) 748-4699
OCLC, Statewide Databases

Cottonwood Elementary

Jeannie Sommerville, Supervising Teacher/
Librarian
Custer County
HC 80 Box 18 Ismay, MT 59336

Statewide Databases

Custer County District**High School Library**

Myra Annalora, School Librarian
Custer County
421 North Tenth Street Miles City, MT 59301
(406) 234-4920
OCLC, Statewide Databases

Custer Public Schools

Sheryl Stout, School Librarian
Yellowstone County
PO Box 69 Custer, MT 59024
(406) 856-4117
OCLC, Statewide Databases

Eagle Cliffs Elementary School

Janet Cole, School Librarian
Yellowstone County
1201 Kootenai Billings, MT 59105
(406) 255-3840
Billings Schools, OCLC, Statewide Databases

Edgar Elementary

Becki Ames, School Librarian
Yellowstone County
320 Nubias Place Billings, MT 59105
(406) 962-3636
OCLC, Statewide Databases

Elder Grove School Library

Ann Gunderson, Media Specialist
Yellowstone County
Billings, MT 59106
(406) 656-2893
Web Site: <http://www.eldergrove.k12.mt.us>
OCLC, Statewide Databases

Elysian School

Carol Drum, School Librarian
Yellowstone County
6416 Elysian Rd Billings, MT 59101
(406) 656-4101
OCLC, Statewide Databases

Forsyth Public Schools

Carole Sweedland, Librarian
Rosebud County
PO Box 319 Forsyth, MT 59327
(406) 346-2796
OCLC, Statewide Databases

Frank Brattin Middle School

Donna McCulloch, Library Aide
Rosebud County
PO Box 159 Colstrip, MT 59323
(406) 748-4699
OCLC, Statewide Databases

Garfield Elementary School

Jonette Doeden, Youth Services Librarian
Custer County
1604 Main Street Miles City, MT 59301
(406) 234-4310
OCLC, Statewide Databases

Garfield Elementary School

Audrey O'Brien, School Librarian
Yellowstone County
3212 1st Ave S Billings, MT 59101
(406) 255-3843
Billings Schools, Statewide Databases

Helen L. Bekken Library

Donna Petriccione, School Librarian
Yellowstone County
205 N 32nd Street Billings, MT 59101
(406) 259-5037
OCLC, Statewide Databases

Highland Elementary School

Ann Walters, School Librarian
Yellowstone County
729 Parkhill Drive Billings, MT 59102
(406) 281-6270
Billings Schools, OCLC, Statewide Databases

Highland Park Elementary

Joan Ameline, School Librarian
Custer County
1604 Main St Miles City, MT 59301
(406) 234-3890
OCLC, Statewide Databases

Huntley Project School K-6

Bonnie Ortner, School Librarian
Yellowstone County
1477 Ash St Worden, MT 59088
(406) 967-2540
OCLC, Statewide Databases

Huntley Project Schools

Bonnie Ortner, School Librarian
Yellowstone County
1477 Ash St Worden, MT 59088
(406) 957-2540
OCLC, Statewide Databases

Hysham Public Schools

Larry Fink, School Librarian
Treasure County
PO Box 272 Hysham, MT 59038
(406) 342-5237
OCLC, Statewide Databases

IMC/Billings Public Schools

Nina Jackson, Library System Services Coord
Yellowstone County
1470 Industrial Avenue Billings, MT 59101
(406) 869-3915
OCLC, Statewide Databases

Independent Elementary School

Nicky Wolf, School Librarian
Yellowstone County
2907 Roundup Rd Billings, MT 59105
(406) 259-8109
OCLC, Statewide Databases

Kinsey Elementary School

Rene Torgerson, School Librarian
Custer County
General Delivery Kinsey, MT 59338
(406) 232-3111
OCLC, Statewide Databases

Kircher Elementary

Jennifer Beardsley, School Clerk
Custer County
Box 2353 Miles City, MT 59301
(406) 232-6584
OCLC, Statewide Databases

Lame Deer Jr./Sr. High School Library

Ann Taylor, Library Specialist
Rosebud County
PO Box 96 Lame Deer, MT 59043
(406) 477-8900
OCLC, Statewide Databases

Lame Deer Elementary School Library

Marilyn Mader, School Librarian
Rosebud County
PO Box 96 Lame Deer, MT 59043
(406) 477-6305
OCLC, Statewide Databases

Lame Deer Jr./Sr. High School Library

Ann Taylor, School Librarian
Rosebud County
PO Box 96 Lame Deer, MT 59043
(406) 477-8900
OCLC, Statewide Databases

Laurel High School

Jamie McCauley, Academy Director
Yellowstone County
203 E 8th St Laurel, MT 59044
(406) 628-7911
Web Site: <http://www.laurel.k12.mt.us/>
OCLC, Statewide Databases

Laurel Middle School

Anne Easton, School Librarian
Yellowstone County
725 Washington Avenue Laurel, MT 59044
(406) 628-3933
OCLC, Statewide Databases

Lewis and Clark Middle School

Elizabeth Waddington, Library Media Specialist
Yellowstone County
1315 Lewis Avenue Billings, MT 59102
(406) 281-5916
Web Site: <https://sites.google.com/a/billings-schools.org/lewis-clark-middle-school-library/>
Catalog: <http://058://library.billings.k12.mt.us>
Billings Schools, OCLC, Statewide Databases

Lincoln Elementary School

Christy Ivanish, School Librarian
Custer County
1604 Main Street Miles City, MT 59301
(406) 234-1697
OCLC, Statewide Databases

Lockwood Intermediate Library

Teresa Marchant, School Librarian
Yellowstone County
1932 US Highway 87 East Lockwood, MT 59101
(406) 248-3239
Web Site: <https://058://sites.google.com/a/lockwoodschoool.org/intlib/>
OCLC, Statewide Databases

Lockwood Middle School Library

Johanna Freivalds, School Librarian
Yellowstone County
1932 US Highway 87 East Lockwood, MT 59101
(406) 867-6215
Web Site: <http://058://www.lockwoodschoool.org/library/freivaldswebpagenew/homepage.html>
OCLC, Statewide Databases

Lockwood Primary School Library

Kristi Laib, School Librarian
Yellowstone County
1932 US Highway 87 East Lockwood, MT 59101
(406) 252-2776
Web Site: <https://058://sites.google.com/site/lockwoodprimarylibrary/>
Statewide Databases

McKinley Elementary School

Janet Cole, School Librarian
Yellowstone County
820 N 31st St Billings, MT 59101
(406) 255-3853
Web Site: <http://www.billings.k12.mt.us>
Billings Schools, OCLC, Statewide Databases

Meadowlark Elementary School

Ginny Waples, School Librarian
Yellowstone County
221 29th St W Billings, MT 59102
(406) 655-3133
Catalog: <http://library.billings.k12.mt.us>
Billings Schools, OCLC, Statewide Databases

Miles Avenue Elementary School

Ruth Ferris, School Library Media Specialist
Yellowstone County
1601 Miles Ave Billings, MT 59102
(406) 281-6214
Billings Schools, OCLC, Statewide Databases

Moon Creek Elementary

Janette Erickson, Supervising Teacher/Librarian
Custer County
PO Box 1262 Miles City, MT 59301
(406) 421-5545
Statewide Databases

Morin Elementary

Tia Schacht, Supervising Teacher/Librarian
Yellowstone County
8824 Pryor Rd Billings, MT 59101
(406) 259-6093
OCLC, Statewide Databases

Newman Elementary School

Preston Liz (Elizabeth), School Librarian
Yellowstone County
605 S Billings Blvd Billings, MT 59101
(406) 255-3862
Billings Schools, OCLC, Statewide Databases

Orchard Elementary School

Andrea Meyer, School Librarian
Yellowstone County
120 Jackson St Billings, MT 59101
(406) 255-3867
Billings Schools, OCLC, Statewide Databases

Pine Butte Elementary School

Becky Miller, Librarian
Rosebud County
PO Box 159 Colstrip, MT 59323
(406) 748-4699
OCLC, Statewide Databases

Pine Hills School Library

Rebecca Schmidt, School Librarian
Custer County
4 N Haynes Ave Miles City, MT 59301
(406) 233-2216
Catalog: <http://mtscprod.msl.mt.gov/uhtbin/cgisirsi/x/0/0/49>
Montana Shared Catalog, OCLC, Statewide Databases

Pioneer Elementary School

Connie Russell, School Librarian
Yellowstone County
1937 Dover Road Billings, MT 59105
(406) 373-5649
OCLC, Statewide Databases

Poly Drive Elementary School

Kelli Delaney, School Librarian
Yellowstone County
2410 Poly Drive Billings, MT 59102
(406) 281-6562
Web Site: <http://058://www.billings.k12.mt.us/poly/index.htm>
Catalog: <http://058://library.billings.k12.mt.us/uhtbin/cgisirsi>
Billings Schools, OCLC, Statewide Databases

Ponderosa Elementary School

Robin Byford, School Librarian
Yellowstone County
4188 King Ave E Billings, MT 59101
(406) 281-6218
Web Site: <http://058://www.billings.k12.mt.us/>
Catalog: <http://058://library.billings.k12.mt.us>
Billings Schools, OCLC, Statewide Databases

Rimrock Elementary School

Angela Paris, School Librarian
Yellowstone County
415 North 30th Street Billings, MT 59101
(406) 255-3876
Billings Schools, OCLC, Statewide Databases

Riverside Middle School

Janet Nickoloff, Media Specialist
Yellowstone County
3700 Madison Ave Billings, MT 59101
(406) 281-6013
Web Site: <http://058://www.billings.k12.mt.us/riverside>
Catalog: http://058://library.billings.k12.mt.us/uhtbin/cgisirsi/BfckCeyE97/ALKALL_CR/1770075/60/1180/X
Billings Schools, OCLC, Statewide Databases

Rock Spring School

Wilma Dodge, Supervising Teacher/Librarian
Rosebud County
PO Box 710 Angela, MT 59312
(406) 354-7691
Statewide Databases

Rose Park Elementary School

Ginny Waples, Librarian
Yellowstone County
1812 19th St W Billings, MT 59102
(406) 281-6219
Billings Schools, OCLC, Statewide Databases

Rosebud Public Schools

Aaron Kneeland, School Librarian
Rosebud County
PO Box 38 Rosebud, MT 59347
(406) 347-5353
OCLC, Statewide Databases

S H School

Ron Hunt, Supervising Teacher/Librarian
Custer County
HC 40 Box 6591 Miles City, MT 59301
(406) 421-5439
OCLC, Statewide Databases

S Y Elementary

Kim Henneberry, School Librarian
Custer County
HC-40 Miles City, MT 59301
(406) 421-5526
Statewide Databases

Sandstone Elementary School

Karen Mayhall, Librarian
Yellowstone County
1440 Nutter Blvd Billings, MT 59105
(406) 281-6923
Web Site: <http://www.billings.k12.mt.us/>
Billings Schools, OCLC, Statewide Databases

Shepherd Elementary Library

Judy Carroll, School Librarian
Yellowstone County
PO Box 8 Shepherd, MT 59079
(406) 373-5516
OCLC, Statewide Databases

Shepherd Junior and Senior High School Library

June Brown, School Librarian
Yellowstone County
PO Box 8 Shepherd, MT 59079
(406) 373-5300
Web Site: <http://shepherd.schoolwires.com/9291022154714650/site/default.asp?>
OCLC, Statewide Databases

Skyview High School Library

Peggy Smith, Librarian
Yellowstone County
1775 High Sierra Boulevard Billings, MT 59105
(406) 281-5287
Web Site: <http://www.skyview.billings.k12.mt.us/library>
Catalog: [http://www.library.billings.k12.mt.us/Billings Schools](http://www.library.billings.k12.mt.us/Billings%20Schools), *OCLC, Statewide Databases*

South Stacey Elementary Library

Jenni Felgenhauer, Supervising Teacher/Librarian
Custer County
124 Stacey Rd. Volborg, MT 59351
(406) 784-2256
OCLC, Statewide Databases

St Francis Intermediate School Library

Jennifer Nieva, School Librarian
Yellowstone County
1734 Yellowstone Billings, MT 59102
(406) 656-2300
Montana Shared Catalog, OCLC, Statewide Databases

St Francis Primary School Library

Amy Brown, Librarian
Yellowstone County
511 Custer Avenue Billings, MT 59101
(406) 259-6421
Montana Shared Catalog, OCLC, Statewide Databases

St Francis Upper School Library

Donna Petriccione, Librarian
Yellowstone County
205 North 32nd Street Billings, MT 59101
(406) 259-5037
Montana Shared Catalog, Statewide Databases

St Labre Indian Catholic School Library

Dan Burke, School Library Media Specialist
Rosebud County
Ashland, MT 59003
(406) 784-4500
Web Site: <http://www.stlabre.org>
OCLC, Statewide Databases

Trail Creek Elementary Library

Joyce Utroske, Supervising Teacher/Librarian
Custer County
HC 40 Box 6591A Ismay, MT 59336
(406) 421-5503
OCLC, Statewide Databases

Twin Buttes Elementary Library

Melinda Hogue, Supervising Teacher/Librarian
Custer County
HC 32 Box 4916 Miles City, MT 59301
(406) 354-7271
OCLC, Statewide Databases

Washington Elementary School Library

Virginia Waples, School Librarian
Yellowstone County
1044 Cook Ave Billings, MT 59102
(406) 281-6699
Web Site: [http://www.billings.k12.mt.us/Billings Schools](http://www.billings.k12.mt.us/Billings%20Schools), *OCLC, Statewide Databases*

Washington Middle School Library

Sue Stanton, School Librarian
Custer County
1604 Main St Miles City, MT 59301
(406) 234-2084
OCLC, Statewide Databases

Will James Middle School Library

Andrea Doles, School Librarian
Yellowstone County
1200 30th St West Billings, MT 59102
(406) 651-8559
Catalog: [http://www.library.billings.k12.mt.us/Billings Schools](http://www.library.billings.k12.mt.us/Billings%20Schools), *OCLC, Statewide Databases*

Yellowstone Academy Library

Nancy Brandt, School Librarian
Yellowstone County
Billings, MT 59106
(406) 656-2198
OCLC, Statewide Databases

Special**Billings Clinic Medical Library**

Victoria Koch, Library Director
Yellowstone County
PO Box 37000 Billings, MT 59107
(406) 238-2226
Web Site: <http://www.billingsclinic.com>
Catalog: <http://www.mtsprod.msl.mt.gov/uhtbin/cgisirsi/x/0/0/49>
Montana Shared Catalog, OCLC, Statewide Databases

Crowley Fleck Library

Margaret Webster, Library Director
Yellowstone County
PO Box 2529 Billings, MT 59101
(406) 255-7201
OCLC, Statewide Databases

Dowl HKM Library

Irene Nelson, Library Director
Yellowstone County
PO Box 31318 Billings, MT 59107
(406) 656-6399
OCLC, Statewide Databases

Planned Parenthood of Montana

Melissa Reams, Teacher
Yellowstone County
100 West Wicks Lane Billings, MT 59105
(406) 869-5046
Web Site: <http://www.ppfa.org>
OCLC, Statewide Databases

PLUK Library

Libby Wolfe, Library Director
Yellowstone County
516 N 32nd Street Billings, MT 59101
(406) 255-0540
Web Site: <http://www.pluk.org>
Catalog: <http://www.mtsprod.msl.mt.gov/uhtbin/cgisirsi/x/0/0/49>
Montana Shared Catalog, OCLC, Statewide Databases

Rimrock Foundation Library

Hugh Kilbourne, Library Director
Yellowstone County
P.O. Box 30374 Billings, MT 59101
(800) 227-3953
Web Site: <http://www.rimrock.org>
OCLC, Statewide Databases

Southeastern Montana Research Library

Robin Gerber, Library Director
Custer County
1411 Leighton Miles City, MT 59301

Web Site: <http://www.geocities.com/Heartland/Fields/6175/>
Statewide Databases

St Vincent Healthcare Health Sciences Library

Ginger Kern, Assistant Librarian
Yellowstone County
PO Box 35200 Billings, MT 59101
(406) 237-8640
Web Site: <http://www.svh-mt.org>
OCLC, Statewide Databases

VA MT Healthcare System Medical Library

Gail Wilkerson, Library Director
Custer County
210 South Winchester Miles City, MT 59301
(406) 874-5615
OCLC, Statewide Databases

Yellowstone Boys and Girls Ranch Library

Lynda Jorgenson, Library Director
Yellowstone County
1732 S 72nd St W Billings, MT 59106
(406) 655-2100
Web Site: <http://www.ybgr.org>
OCLC, Statewide Databases

State of Montana Index

	Montana	United States	Rank in US
Geography			
Population per square mile 2000	6.2	79.6	49
Households 2000 (complete count)	358,667	105,480,101	44
Persons per household 2000 (complete count)	2.5	2.6	46
Resident Population			
Estimate (July 1) 2009	974,989	307,006,550	44
Estimate, percent change - April 1, 2000 to July 1, 2009	8.1	9.1	21
Total population estimate, net change - April 1, 2000 to July 1, 2009	72,799	25,581,948	40
April 1, 2000 (complete count)	902,195	281,421,906	44
Under 5 years (July 1 - estimate) 2009	62,438	21,299,656	43
Under 5 years, percent (July 1 - estimate) 2009	6.4	6.9	39
Under 18 years (July 1 - estimate) 2009	219,828	74,548,215	44
Under 18 years, percent (July 1 - estimate) 2009	22.5	24.3	40
65 years and over (July 1 - estimate) 2009	141,903	39,570,590	44
65 years and over, percent (July 1 - estimate) 2009	14.6	12.9	7
Total females, percent (July 1 - estimate) 2009	50.0	50.7	40
White alone (July 1 - estimate) 2009	880,107	244,298,393	43
Black alone (July 1 - estimate) 2009	7,282	39,641,060	50
American Indian and Alaska Native alone (July 1 - estimate) 2009	62,873	3,151,284	13
Asian alone (July 1 - estimate) 2009	6,810	14,013,954	49
Native Hawaiian and Other Pacific Islander alone (July 1 - estimate) 2009	707	578,353	42
Population 5 years and over, percent speaking language other than English at home, 2000	5.2	17.9	44
Civilian noninstitutionalized population, 5 years and over, with a disability 2000	145,732	49,746,248	44
Vital Statistics			
Births 2006	12,508	4,265,555	43
Deaths 2006	8,472	2,426,264	44
Infant deaths under one year 2006	73	28,527	48
Population 5 years and over by residence in 1995 - percent in same house, 2000 (sample)	53.6	54.1	32
Percent foreign born population 2000 (sample)	1.8	11.1	49
Education			
Educational attainment - persons 25 years and over - percent high school graduate or higher 2000	87.2	80.4	6
Educational attainment - persons 25 years and over - percent bachelors degree or higher 2000	24.4	24.4	22
Income/Poverty			
Per capita income in 1999	17,151	21,587	47
Median household income 2008	43,948	52,029	42
People of all ages in poverty - percent 2008	14	13	17
Personal income 2007	31,783	11,634,322	46
Per capita personal income 2007	33,225	38,615	40
Federal			
Federal Government expenditure - total FY 2008	8,842,960	2,771,782,152	46
Federal Government expenditure per capita FY 2008	9,141	9,116	22
Housing			
Housing unit estimates as of July 1, 2009	441,279	129,925,421	44
Housing unit estimates - net change, April 1, 2000 (base) to July 1, 2009	28,648	14,020,948	45
Housing unit estimates - percent change, April 1, 2000 (base) to July 1, 2009	6.9	12.1	40
Owner-occupied housing units - percent of total occupied housing units 2000 (complete count)	69.1	66.2	25
Median value of specified owner-occupied housing units 2000 (sample)	99,500	119,600	31
Housing units by units in structure - multiple units 2000 (sample)	15.7	26.4	43
New private housing units authorized by building permits - total 2009 (20,000-place universe)	1,686	582,963	47
Valuation of new private housing units authorized by building permits 2009 (20,000-place universe)	253,576	95,410,469	47
Employment/Business			
Civilian labor force 2009	498,907	154,142,000	44
Civilian labor force unemployment 2009	30,862	14,265,000	46
Civilian labor force unemployment rate 2009	6.2	9.3	47
Employment in all industries (NAICS, no code) 2007	647,427	180,943,800	44
Employment in all industries, net change 2000 - 2007	88,372	14,185,000	34
Employment in government (NAICS 92) 2007	93,107	24,257,000	45
Earnings in all industries (NAICS, no code) 2007	22,293,038	8,848,240,000	47
Earnings in all industries (NAICS, no code), average earnings per job 2007	34,433	48,900	51
Average travel time to work for workers 16 years and over not working at home 2000 (in minutes)	18	26	49
Private nonfarm establishments 2007	37,755	7,705,018	42
Private nonfarm employment for pay period including March 12, 2007	37,755	7,705,018	42
Private nonfarm employment for pay period including March 12, 2007, percent change 2000-2007	353,807.0	120,604,265.0	46
Nonemployer: total (NAICS 00) - establishments, 2007	83,999	21,708,021	43
Accommodation and Food Services: total (NAICS 72) - sales of establishments with payroll 2002	1,537,986	449,498,718	45
Total number of firms 2002	100,402	22,974,655	42
Manufacturing: total (NAICS 31-33) - value of shipments 2002	4,987,577	3,916,136,712	47
Wholesale trade: total (NAICS 42) - sales of establishments with payroll 2002	7,223,420	4,634,755,112	47
Retail trade: total (NAICS 44-45) - sales of establishments with payroll 2002	10,122,625	3,056,421,997	45
Retail trade: total (NAICS 44-45) - sales of establishments with payroll per capita 2002	11,116	10,615	17
Land in farms (NAICS) 2007 (acres) (adjusted)	61,388,462	922,095,840	2

Source: U.S. Census Bureau

Custer County Index

	County	Montana	Rank in MT
Geography			
Population per square mile 2000	3.1	6.2	25
Households 2000 (complete count)	4,768	358,667	14
Persons per household 2000 (complete count)	2.4	2.5	41
Resident Population			
Estimate (July 1) 2009	11,189	974,989	17
Estimate, percent change - April 1, 2000 to July 1, 2009	-4.3	8.1	33
Total population estimate, net change - April 1, 2000 to July 1, 2009	-507	72,799	47
April 1, 2000 (complete count)	11,696	902,195	16
Under 5 years (July 1 - estimate) 2009	734	62,438	17
Under 5 years, percent (July 1 - estimate) 2009	6.6	6.4	15
Under 18 years (July 1 - estimate) 2009	2,607	219,828	18
Under 18 years, percent (July 1 - estimate) 2009	23.3	22.5	17
65 years and over (July 1 - estimate) 2009	1,956	141,903	15
65 years and over, percent (July 1 - estimate) 2009	17.5	14.6	32
Total females, percent (July 1 - estimate) 2009	50.7	50.0	10
White alone (July 1 - estimate) 2009	10,784	880,107	14
Black alone (July 1 - estimate) 2009	26	7,282	21
American Indian and Alaska Native alone (July 1 - estimate) 2009	201	62,873	26
Asian alone (July 1 - estimate) 2009	34	6,810	21
Native Hawaiian and Other Pacific Islander alone (July 1 - estimate) 2009	7	707	13
Population 5 years and over, percent speaking language other than English at home, 2000	5	5	24
Civilian noninstitutionalized population, 5 years and over, with a disability 2000	2,063	145,732	17
Vital Statistics			
Births 2006	164	12,508	15
Deaths 2006	140	8,472	13
Infant deaths under one year 2006	2	73	12
Population 5 years and over by residence in 1995 - percent in same house, 2000 (sample)	57.7	53.6	35
Percent foreign born population 2000 (sample)	1.4	1.8	34
Education			
Educational attainment - persons 25 years and over - percent high school graduate or higher 2000	84.9	87.2	26
Educational attainment - persons 25 years and over - percent bachelors degree or higher 2000	18.8	24.4	23
Income/Poverty			
Per capita income in 1999	15,876	17,151	24
Median household income 2008	39,859	43,948	22
People of all ages in poverty - percent 2008	16	14	22
Personal income 2007	339	31,783	16
Per capita personal income 2007	30,348	33,225	26
Federal			
Federal Government expenditure - total FY 2008	100,070	8,842,960	56
Federal Government expenditure per capita FY 2008	8,976	9,141	35
Housing			
Housing unit estimates as of July 1, 2009	5,344	441,279	15
Housing unit estimates - net change, April 1, 2000 (base) to July 1, 2009	-16	28,648	50
Housing unit estimates - percent change, April 1, 2000 (base) to July 1, 2009	-0.3	6.9	37
Owner-occupied housing units - percent of total occupied housing units 2000 (complete count)	70.2	69.1	42
Median value of specified owner-occupied housing units 2000 (sample)	63,100	99,500	31
Housing units by units in structure - multiple units 2000 (sample)	17.6	15.7	9
New private housing units authorized by building permits - total 2009 (20,000-place universe)	4	1,686	18
Valuation of new private housing units authorized by building permits 2009 (20,000-place universe)	584	253,576	19
Employment/Business			
Civilian labor force 2009	5,871	498,907	15
Civilian labor force unemployment 2009	260	30,862	21
Civilian labor force unemployment rate 2009	4.4	6.2	40
Employment in all industries (NAICS, no code) 2007	7,405	647,427	15
Employment in all industries, net change 2000 - 2007	388	88,372	23
Employment in government (NAICS 92) 2007	1,123	93,107	17
Earnings in all industries (NAICS, no code) 2007	215,041	22,293,038	18
Earnings in all industries (NAICS, no code), average earnings per job 2007	29,040	34,433	23
Average travel time to work for workers 16 years and over not working at home 2000 (in minutes)	11.9	17.7	54
Private nonfarm establishments 2007	413	37,755	16
Private nonfarm employment for pay period including March 12, 2007	413	37,755	16
Private nonfarm employment for pay period including March 12, 2007, percent change 2000-2007	4,072.0	353,807.0	14
Nonemployer: total (NAICS 00) - establishments, 2007	771	83,999	21
Accommodation and Food Services: total (NAICS 72) - sales of establishments with payroll 2002	18,040	1,537,986	14
Total number of firms 2002	1,152	100,402	17
Manufacturing: total (NAICS 31-33) - value of shipments 2002	0	4,987,577	26
Wholesale trade: total (NAICS 42) - sales of establishments with payroll 2002	81,951	7,223,420	11
Retail trade: total (NAICS 44-45) - sales of establishments with payroll 2002	142,594	10,122,625	11
Retail trade: total (NAICS 44-45) - sales of establishments with payroll per capita 2002	12,466	11,116	7
Land in farms (NAICS) 2007 (acres) (adjusted)	2,127,013	61,388,462	7

Source: U.S. Census Bureau

Rosebud County Index

	County	Montana	Rank in MT
Geography			
Population per square mile 2000	1.9	6.2	33
Households 2000 (complete count)	3,307	358,667	25
Persons per household 2000 (complete count)	2.8	2.5	4
Resident Population			
Estimate (July 1) 2009	9,258	974,989	22
Estimate, percent change - April 1, 2000 to July 1, 2009	-1.4	8.1	27
Total population estimate, net change - April 1, 2000 to July 1, 2009	-131	72,799	32
April 1, 2000 (complete count)	9,383	902,195	23
Under 5 years (July 1 - estimate) 2009	858	62,438	15
Under 5 years, percent (July 1 - estimate) 2009	9.3	6.4	4
Under 18 years (July 1 - estimate) 2009	2,939	219,828	16
Under 18 years, percent (July 1 - estimate) 2009	31.7	22.5	4
65 years and over (July 1 - estimate) 2009	1,022	141,903	32
65 years and over, percent (July 1 - estimate) 2009	11.0	14.6	52
Total females, percent (July 1 - estimate) 2009	50.2	50.0	21
White alone (July 1 - estimate) 2009	5,655	880,107	27
Black alone (July 1 - estimate) 2009	56	7,282	14
American Indian and Alaska Native alone (July 1 - estimate) 2009	3,258	62,873	8
Asian alone (July 1 - estimate) 2009	71	6,810	12
Native Hawaiian and Other Pacific Islander alone (July 1 - estimate) 2009	0	707	42
Population 5 years and over, percent speaking language other than English at home, 2000	13	5	5
Civilian noninstitutionalized population, 5 years and over, with a disability 2000	1,460	145,732	22
Vital Statistics			
Births 2006	164	12,508	16
Deaths 2006	71	8,472	27
Infant deaths under one year 2006	1	73	22
Population 5 years and over by residence in 1995 - percent in same house, 2000 (sample)	58.8	53.6	34
Percent foreign born population 2000 (sample)	1.1	1.8	43
Education			
Educational attainment - persons 25 years and over - percent high school graduate or higher 2000	84.4	87.2	29
Educational attainment - persons 25 years and over - percent bachelors degree or higher 2000	17.6	24.4	28
Income/Poverty			
Per capita income in 1999	15,032	17,151	35
Median household income 2008	45,789	43,948	9
People of all ages in poverty - percent 2008	23	14	5
Personal income 2007	278	31,783	21
Per capita personal income 2007	30,364	33,225	25
Federal			
Federal Government expenditure - total FY 2008	80,595	8,842,960	8
Federal Government expenditure per capita FY 2008	8,770	9,141	37
Housing			
Housing unit estimates as of July 1, 2009	3,946	441,279	28
Housing unit estimates - net change, April 1, 2000 (base) to July 1, 2009	31	28,648	21
Housing unit estimates - percent change, April 1, 2000 (base) to July 1, 2009	0.8	6.9	22
Owner-occupied housing units - percent of total occupied housing units 2000 (complete count)	67.1	69.1	46
Median value of specified owner-occupied housing units 2000 (sample)	66,700	99,500	30
Housing units by units in structure - multiple units 2000 (sample)	10.8	15.7	23
New private housing units authorized by building permits - total 2009 (20,000-place universe)	6	1,686	15
Valuation of new private housing units authorized by building permits 2009 (20,000-place universe)	916	253,576	15
Employment/Business			
Civilian labor force 2009	4,046	498,907	25
Civilian labor force unemployment 2009	249	30,862	23
Civilian labor force unemployment rate 2009	6.2	6.2	17
Employment in all industries (NAICS, no code) 2007	5,945	647,427	19
Employment in all industries, net change 2000 - 2007	52	88,372	38
Employment in government (NAICS 92) 2007	1,695	93,107	14
Earnings in all industries (NAICS, no code) 2007	248,206	22,293,038	14
Earnings in all industries (NAICS, no code), average earnings per job 2007	41,750	34,433	1
Average travel time to work for workers 16 years and over not working at home 2000 (in minutes)	16.0	17.7	35
Private nonfarm establishments 2007	180	37,755	31
Private nonfarm employment for pay period including March 12, 2007	180	37,755	31
Private nonfarm employment for pay period including March 12, 2007, percent change 2000-2007	2,861.0	353,807.0	17
Nonemployer: total (NAICS 00) - establishments, 2007	521	83,999	26
Accommodation and Food Services: total (NAICS 72) - sales of establishments with payroll 2002	8,400	1,537,986	26
Total number of firms 2002	678	100,402	28
Manufacturing: total (NAICS 31-33) - value of shipments 2002	0	4,987,577	10
Wholesale trade: total (NAICS 42) - sales of establishments with payroll 2002	0	7,223,420	39
Retail trade: total (NAICS 44-45) - sales of establishments with payroll 2002	39,216	10,122,625	27
Retail trade: total (NAICS 44-45) - sales of establishments with payroll per capita 2002	4,227	11,116	46
Land in farms (NAICS) 2007 (acres) (adjusted)	2,714,024	61,388,462	2

Source: U.S. Census Bureau

Treasure County Index

	County	Montana	Rank in MT
Geography			
Population per square mile 2000	0.9	6.2	47
Households 2000 (complete count)	357	358,667	55
Persons per household 2000 (complete count)	2.4	2.5	32
Resident Population			
Estimate (July 1) 2009	612	974,989	55
Estimate, percent change - April 1, 2000 to July 1, 2009	-28.9	8.1	56
Total population estimate, net change - April 1, 2000 to July 1, 2009	-249	72,799	38
April 1, 2000 (complete count)	861	902,195	55
Under 5 years (July 1 - estimate) 2009	26	62,438	55
Under 5 years, percent (July 1 - estimate) 2009	4.2	6.4	47
Under 18 years (July 1 - estimate) 2009	110	219,828	55
Under 18 years, percent (July 1 - estimate) 2009	18.0	22.5	50
65 years and over (July 1 - estimate) 2009	139	141,903	55
65 years and over, percent (July 1 - estimate) 2009	22.7	14.6	6
Total females, percent (July 1 - estimate) 2009	48.7	50.0	48
White alone (July 1 - estimate) 2009	587	880,107	55
Black alone (July 1 - estimate) 2009	1	7,282	49
American Indian and Alaska Native alone (July 1 - estimate) 2009	16	62,873	47
Asian alone (July 1 - estimate) 2009	3	6,810	48
Native Hawaiian and Other Pacific Islander alone (July 1 - estimate) 2009	0	707	49
Population 5 years and over, percent speaking language other than English at home, 2000	2	5	54
Civilian noninstitutionalized population, 5 years and over, with a disability 2000	131	145,732	55
Vital Statistics			
Births 2006	5	12,508	56
Deaths 2006	6	8,472	54
Infant deaths under one year 2006	0	73	54
Population 5 years and over by residence in 1995 - percent in same house, 2000 (sample)	63.7	53.6	24
Percent foreign born population 2000 (sample)	0.8	1.8	51
Education			
Educational attainment - persons 25 years and over - percent high school graduate or higher 2000	86.3	87.2	20
Educational attainment - persons 25 years and over - percent bachelors degree or higher 2000	18.2	24.4	26
Income/Poverty			
Per capita income in 1999	14,392	17,151	44
Median household income 2008	38,296	43,948	31
People of all ages in poverty - percent 2008	11	14	47
Personal income 2007	16	31,783	55
Per capita personal income 2007	25,248	33,225	46
Federal			
Federal Government expenditure - total FY 2008	7,594	8,842,960	11
Federal Government expenditure per capita FY 2008	11,922	9,141	21
Housing			
Housing unit estimates as of July 1, 2009	418	441,279	55
Housing unit estimates - net change, April 1, 2000 (base) to July 1, 2009	-4	28,648	35
Housing unit estimates - percent change, April 1, 2000 (base) to July 1, 2009	-0.9	6.9	49
Owner-occupied housing units - percent of total occupied housing units 2000 (complete count)	71.4	69.1	34
Median value of specified owner-occupied housing units 2000 (sample)	40,700	99,500	52
Housing units by units in structure - multiple units 2000 (sample)	3.3	15.7	51
New private housing units authorized by building permits - total 2009 (20,000-place universe)	0	1,686	43
Valuation of new private housing units authorized by building permits 2009 (20,000-place universe)	0	253,576	43
Employment/Business			
Civilian labor force 2009	411	498,907	55
Civilian labor force unemployment 2009	19	30,862	55
Civilian labor force unemployment rate 2009	4.6	6.2	35
Employment in all industries (NAICS, no code) 2007	453	647,427	55
Employment in all industries, net change 2000 - 2007	33	88,372	41
Employment in government (NAICS 92) 2007	85	93,107	55
Earnings in all industries (NAICS, no code) 2007	7,108	22,293,038	55
Earnings in all industries (NAICS, no code), average earnings per job 2007	15,691	34,433	55
Average travel time to work for workers 16 years and over not working at home 2000 (in minutes)	18.3	17.7	24
Private nonfarm establishments 2007	23	37,755	54
Private nonfarm employment for pay period including March 12, 2007	23	37,755	54
Private nonfarm employment for pay period including March 12, 2007, percent change 2000-2007	75.0	353,807.0	54
Nonemployer: total (NAICS 00) - establishments, 2007	53	83,999	55
Accommodation and Food Services: total (NAICS 72) - sales of establishments with payroll 2002	342	1,537,986	53
Total number of firms 2002	79	100,402	55
Manufacturing: total (NAICS 31-33) - value of shipments 2002	0	4,987,577	55
Wholesale trade: total (NAICS 42) - sales of establishments with payroll 2002	0	7,223,420	55
Retail trade: total (NAICS 44-45) - sales of establishments with payroll 2002	4,359	10,122,625	51
Retail trade: total (NAICS 44-45) - sales of establishments with payroll per capita 2002	5,610	11,116	36
Land in farms (NAICS) 2007 (acres) (adjusted)	461,790	61,388,462	46

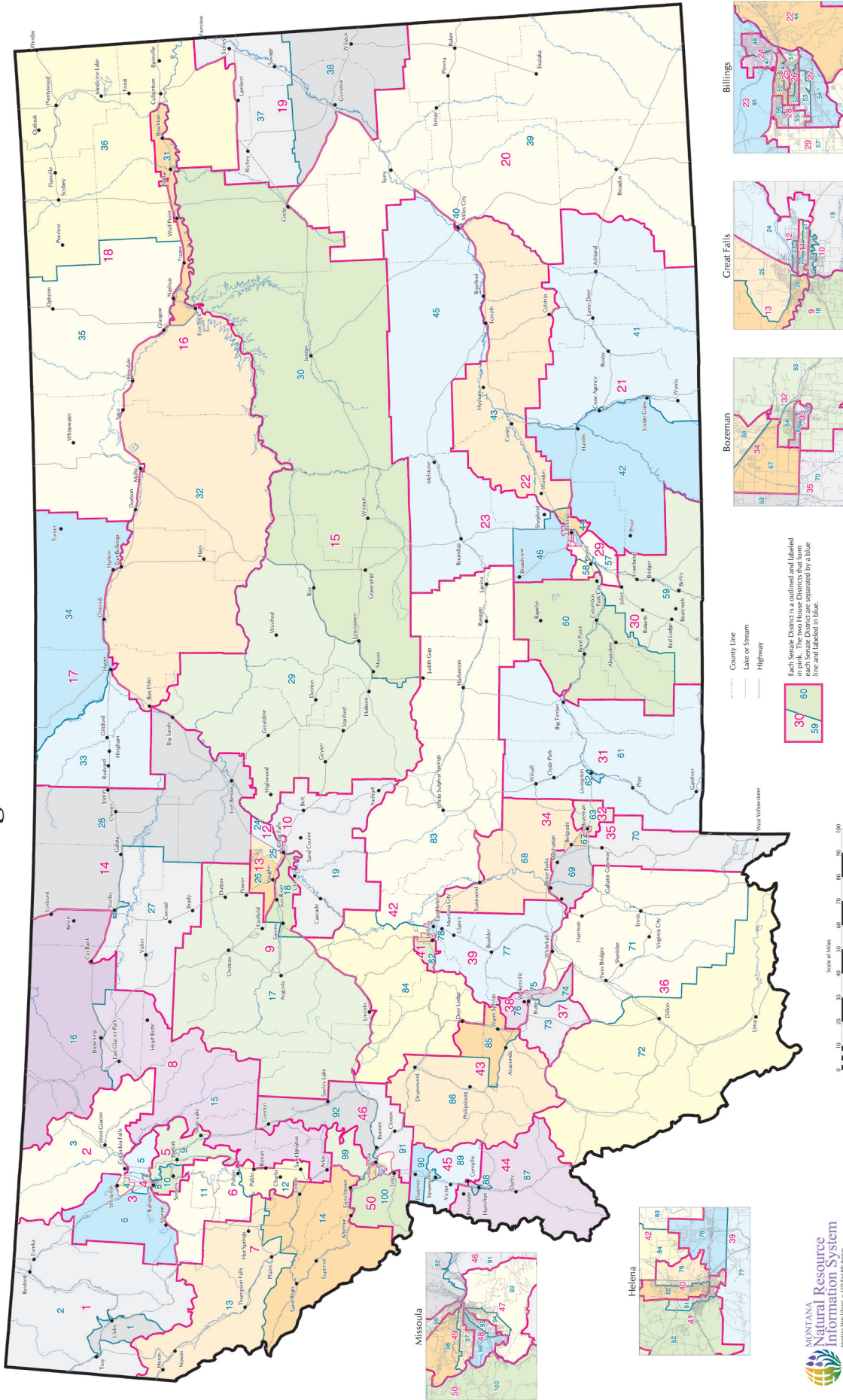
Source: U.S. Census Bureau

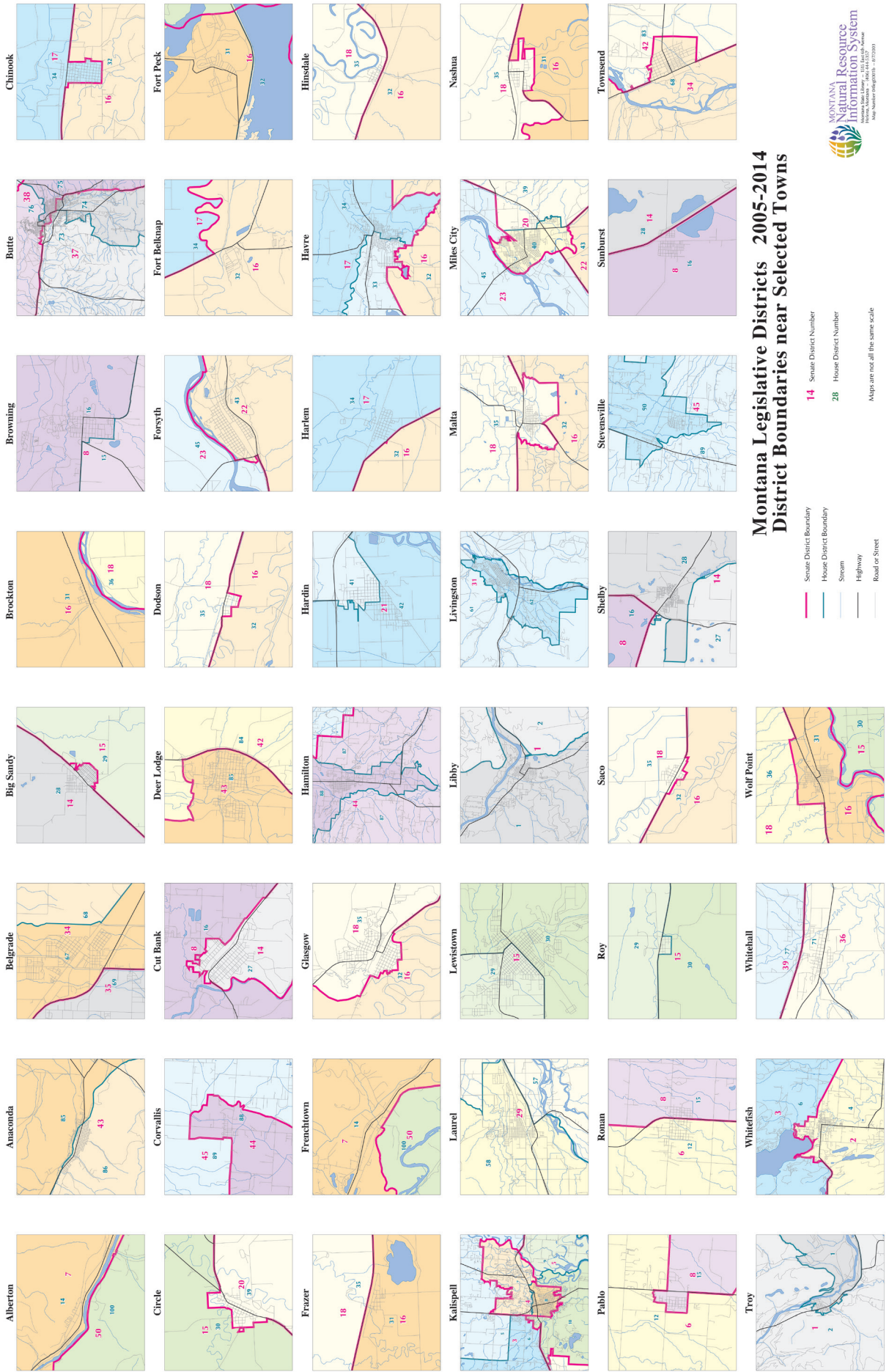
Yellowstone County Index

	County	Montana	Rank in MT
Geography			
Population per square mile 2000	49.1	6.2	1
Households 2000 (complete count)	52,084	358,667	1
Persons per household 2000 (complete count)	2.4	2.5	27
Resident Population			
Estimate (July 1) 2009	144,797	974,989	1
Estimate, percent change - April 1, 2000 to July 1, 2009	11.9	8.1	6
Total population estimate, net change - April 1, 2000 to July 1, 2009	15,449	72,799	2
April 1, 2000 (complete count)	129,352	902,195	1
Under 5 years (July 1 - estimate) 2009	10,139	62,438	1
Under 5 years, percent (July 1 - estimate) 2009	7.0	6.4	9
Under 18 years (July 1 - estimate) 2009	34,442	219,828	1
Under 18 years, percent (July 1 - estimate) 2009	23.8	22.5	14
65 years and over (July 1 - estimate) 2009	20,325	141,903	1
65 years and over, percent (July 1 - estimate) 2009	14.0	14.6	46
Total females, percent (July 1 - estimate) 2009	51.0	50.0	5
White alone (July 1 - estimate) 2009	132,253	880,107	1
Black alone (July 1 - estimate) 2009	2,324	7,282	1
American Indian and Alaska Native alone (July 1 - estimate) 2009	5,914	62,873	5
Asian alone (July 1 - estimate) 2009	1,393	6,810	1
Native Hawaiian and Other Pacific Islander alone (July 1 - estimate) 2009	201	707	1
Population 5 years and over, percent speaking language other than English at home, 2000	5	5	22
Civilian noninstitutionalized population, 5 years and over, with a disability 2000	21,017	145,732	1
Vital Statistics			
Births 2006	1,982	12,508	1
Deaths 2006	1,250	8,472	1
Infant deaths under one year 2006	11	73	1
Population 5 years and over by residence in 1995 - percent in same house, 2000 (sample)	52.3	53.6	51
Percent foreign born population 2000 (sample)	1.4	1.8	38
Education			
Educational attainment - persons 25 years and over - percent high school graduate or higher 2000	88.5	87.2	8
Educational attainment - persons 25 years and over - percent bachelors degree or higher 2000	26.4	24.4	6
Income/Poverty			
Per capita income in 1999	19,303	17,151	1
Median household income 2008	49,337	43,948	6
People of all ages in poverty - percent 2008	11	14	50
Personal income 2007	5,328	31,783	1
Per capita personal income 2007	38,124	33,225	1
Federal			
Federal Government expenditure - total FY 2008	925,432	8,842,960	4
Federal Government expenditure per capita FY 2008	6,501	9,141	49
Housing			
Housing unit estimates as of July 1, 2009	59,773	441,279	1
Housing unit estimates - net change, April 1, 2000 (base) to July 1, 2009	5,212	28,648	3
Housing unit estimates - percent change, April 1, 2000 (base) to July 1, 2009	9.6	6.9	4
Owner-occupied housing units - percent of total occupied housing units 2000 (complete count)	69.2	69.1	44
Median value of specified owner-occupied housing units 2000 (sample)	101,900	99,500	10
Housing units by units in structure - multiple units 2000 (sample)	19.9	15.7	5
New private housing units authorized by building permits - total 2009 (20,000-place universe)	513	1,686	1
Valuation of new private housing units authorized by building permits 2009 (20,000-place universe)	59,593	253,576	2
Employment/Business			
Civilian labor force 2009	81,834	498,907	1
Civilian labor force unemployment 2009	3,643	30,862	2
Civilian labor force unemployment rate 2009	4.5	6.2	37
Employment in all industries (NAICS, no code) 2007	103,448	647,427	1
Employment in all industries, net change 2000 - 2007	14,248	88,372	2
Employment in government (NAICS 92) 2007	9,344	93,107	3
Earnings in all industries (NAICS, no code) 2007	4,195,080	22,293,038	1
Earnings in all industries (NAICS, no code), average earnings per job 2007	40,553	34,433	2
Average travel time to work for workers 16 years and over not working at home 2000 (in minutes)	17.9	17.7	25
Private nonfarm establishments 2007	5,512	37,755	1
Private nonfarm employment for pay period including March 12, 2007	5,512	37,755	1
Private nonfarm employment for pay period including March 12, 2007, percent change 2000-2007	66,093.0	353,807.0	1
Nonemployer: total (NAICS 00) - establishments, 2007	10,725	83,999	1
Accommodation and Food Services: total (NAICS 72) - sales of establishments with payroll 2002	274,959	1,537,986	1
Total number of firms 2002	14,009	100,402	1
Manufacturing: total (NAICS 31-33) - value of shipments 2002	2,128,044	4,987,577	1
Wholesale trade: total (NAICS 42) - sales of establishments with payroll 2002	0	7,223,420	38
Retail trade: total (NAICS 44-45) - sales of establishments with payroll 2002	1,944,727	10,122,625	1
Retail trade: total (NAICS 44-45) - sales of establishments with payroll per capita 2002	14,738	11,116	3
Land in farms (NAICS) 2007 (acres) (adjusted)	1,615,769	61,388,462	14

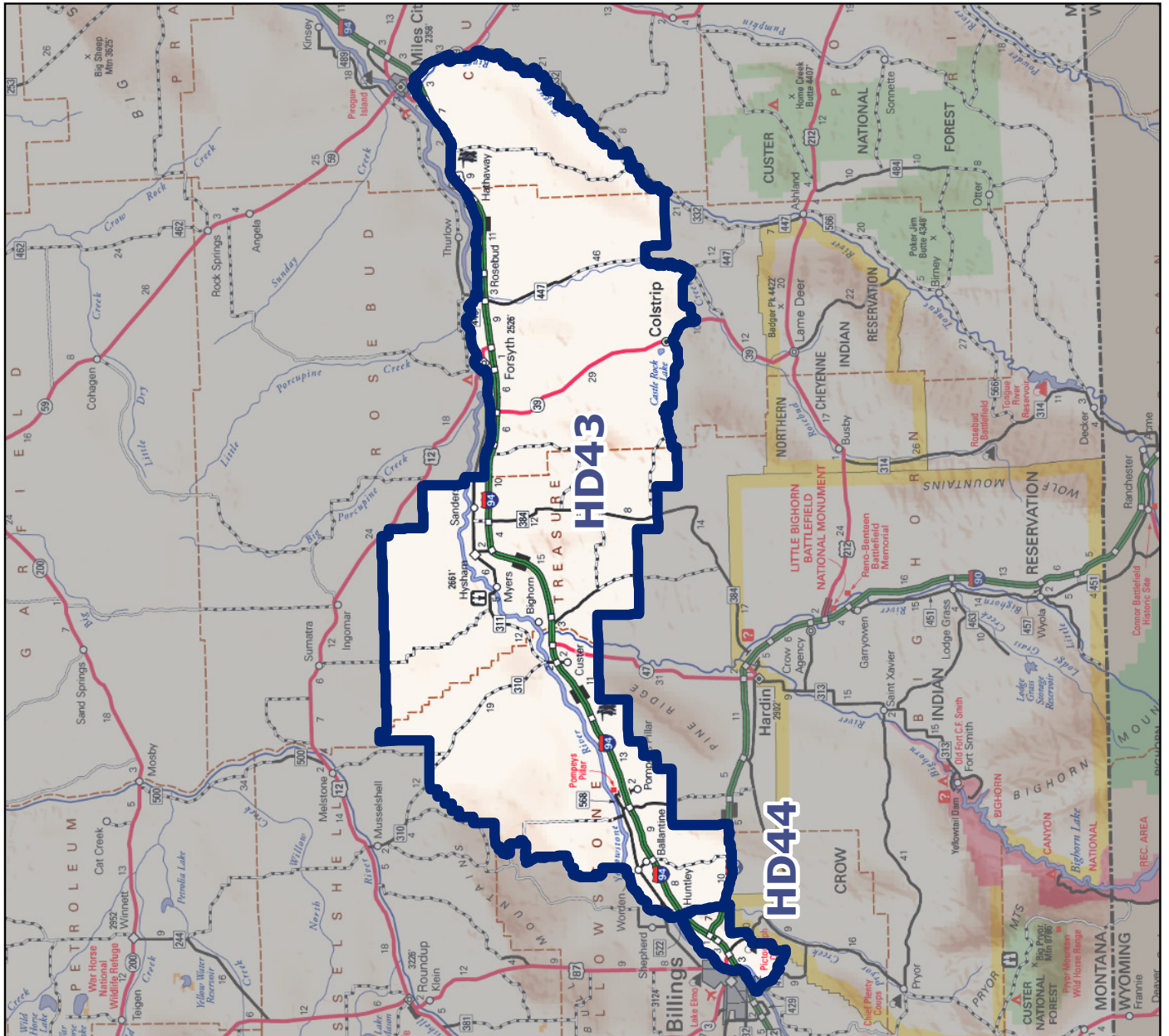
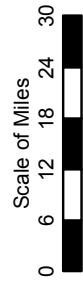
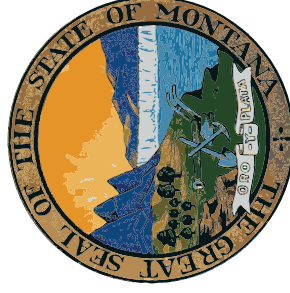
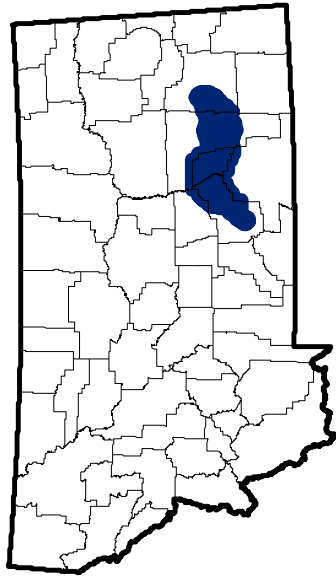
Source: U.S. Census Bureau

Montana Legislative Districts 2005-2014





Montana Senate District 22





Montana State Library

1515 East 6th Avenue
PO Box 201800
Helena, MT 59620
(406) 444-3115

<http://msl.mt.gov>

Statewide Library Resources

- **Montana Shared Catalog**
- **Montana Library Directory**

<http://mymontanalibrary.org>

http://msl.mt.gov/For_Librarians/Library_Directory

Montana State Digital Library

- **Library Information Services**
 - Archive Montana
 - Montana State Publications Online
 - Request or submit State Publications
 - Montana State Library catalog
 - Online Magazines & Journals
 - Research Databases
- **Natural Resource Information System**
 - Montana GIS Portal
 - Maps and Geographic Information
 - Montana Digital Atlas/Map Gallery
 - Water Information
- **Natural Heritage Program**
 - Montana Field Guide
 - Natural Heritage Tracker
 - Species of Concern Reports - Animals
 - Species of Concern Reports - Plants
 - Map Viewer

<http://archive.msl.mt.gov>

<http://statepublications.mt.gov>

http://msl.mt.gov/for_state_employees/State_Publications

<http://msl.mt.gov/msc>

http://msl.mt.gov/for_state_employees/journals.asp

http://msl.mt.gov/For_State_Employees/Find_Resources_Online/

<http://nris.mt.gov>

<http://gisportal.mt.gov/>

<http://nris.mt.gov/gis>

<http://nris.mt.gov/interactive.html>

<http://nris.mt.gov/wis>

<http://mtnhp.org/>

<http://fieldguide.mt.gov/>

<http://mtnhp.org/Tracker>

<http://mtnhp.org/SpeciesOfConcern/?AorP=a>

<http://mtnhp.org/SpeciesOfConcern/?AorP=p>

<http://mtnhp.org/mapviewer/>

Montana Talking Book Library

- On-line catalogs and services – WebOpac
WebBraille

http://msl.mt.gov/talking_book_library

<http://www.klasweb.msl.mt.gov>

Montana State Library In-House Partners

- **Montana Base Map Service Center**
- **Montana Fish, Wildlife & Parks**
- **Natural Resources Conservation Service**

<http://giscoordination.mt.gov/>

<http://fwp.mt.gov>

<http://www.mt.nrcs.usda.gov/>

Legislative Snapshot

http://msl.mt.gov/legislative_snapshot/