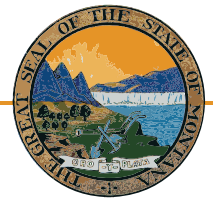


Legislative Snapshot 2011



Includes information for the State of Montana,
Senate District 18, and House Districts 35 and 36.

http://msl.mt.gov/legislative_snapshot/

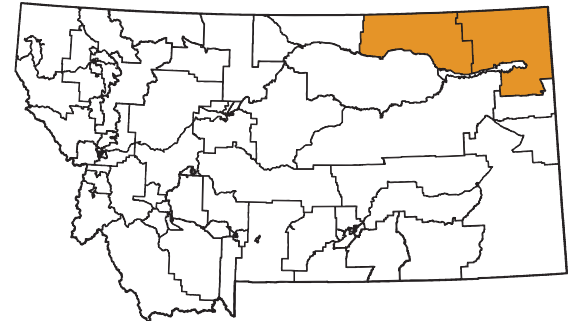


Senate District 18

Senator John Brenden (R)

PO Box 970

Scobey, MT 59263-0970



House District 35

Representative Wayne Stahl (R)

PO Box 345

Saco, MT 59261-0345



House District 36

Representative Austin Knudsen (R)

PO Box 624

Culbertson, MT 59218-0624



Letter from the Montana State Librarian

On behalf of the Montana State Library, I would like to welcome you to the 2011 legislative session. Our information experts have compiled this booklet to be a resource to you as you take on the important work of representing the collective needs of all Montanans and the special needs of your district during this legislative session.



As for past editions, we reviewed proposed bills and national and state trends related to what we believe will be major themes in this legislative session. To that end, you will find a wide range of information on our state's economy, energy production and development, and land and water use. Education is always an important issue, and you will find relevant information on our state's public schools and test scores, as well as on the libraries that help to augment what our schools do. While the drought seems to have subsided, our forests are now inundated by both blight and bark beetles, and you will be able to take a look at the most current information on maps available through the State Library. Finally, wildlife and recreation will always be an important part of Montana life, and we've pulled several highlights from our collection that might help to guide your decision-making this session.

The Montana State Library is a small and very unique agency. We employ not only librarians, but GIS and natural resource specialists and partner with botanists and zoologists, as well as federal and state agencies. We manage an enormous collection of state publications, as we simultaneously work to ensure that Montana's blind and physically disabled have access to reading materials and information.

We also work on behalf of all of Montana's libraries to help them provide the latest and best information and library services to their patrons – your constituents – whether it's downloadable books, public access computers, online resources, or just the latest bestseller. Without the Montana State Library leading the charge, Montana libraries would not be able to afford these resources and services for their patrons – all of which are being used in record numbers during these difficult economic times. In this age of information, most of which is only accessed online, the Montana State Library, through libraries across the state, provides a vital link that affects Montanans in a multitude of ways.

We created this book for you to not only to provide vital information to help you make difficult decisions in the coming months, but to demonstrate the power of what a diverse staff with amazingly diverse skills can do to make information in many different forms available to every Montanan. We are very proud of what we do here at the State Library as we work to empower Montanans by providing access to information, enhancing learning in families and communities, and building 21st Century skills.

We hope that you use this book throughout the session and stop by to see us – in person or virtually. Whether you visit us at our library or online, you will be able to browse our collection of government information, get help researching a specific issue, or find a quiet place to work or meet with colleagues. We are located one block east of the Capitol, behind the Montana Historical Society, at the north end of the Justice building. And of course, our services are available 24 hours a day, seven days a week at <http://msl.mt.gov>.

Sincerely,

A handwritten signature in black ink that reads "Darlene Staffeldt". The signature is written in a cursive, flowing style.

Darlene Staffeldt
Montana State Librarian

Senate District 18 House District 35 House District 36

Table of Contents

2	Recent Performance of the Montana Economy and its Industries
5	Recovery
6	Demographics
8	Education
9	Libraries
11	Land
12	Water
13	Environmental Impacts
14	Energy, Mines
15	Wildlife and Recreation

Appendices

i	Library Directory
iv	State of Montana Index

Senate District 18 County Indexes

v	Daniels County
vi	Phillips County
vii	Richland County
viii	Roosevelt County
ix	Sheridan County
x	Valley County

Maps

xi	Legislative Districts
xiii	Senate District 18

Recent Performance of the Montana Economy and Its Industries

Source: Montana Department of Labor, Research and Analysis Bureau

The Montana economy has undergone significant changes in the past two years as the national recession impacted the state. Leading up to the recession, Montana was experiencing faster employment growth, larger wage growth, and lower unemployment than the nation as a whole. Over the 1997-2007 time period, employment in Montana grew at a rate of 2.1% per year – far surpassing the national growth rate of 1.1% and Montana’s long-term average of 1.2% from 1976 to 2009.

Montana continued to outperform the nation during the recession with payroll employment losses of 5.8% compared to 6.1% nationally. In fact, Montana had only two quarters of negative personal income growth in 2008 and 2009 compared to four quarters nationally. Our industry mix, more responsible borrowing and lending practices, and the momentum of the economy preceding the downturn all contributed to our above-average performance. Montana’s unemployment rate also outperformed the national rate. Montana’s unemployment rate increased by 2.7 points from 3.5% in 2007 to 6.2% in 2009, compared to a 4.7 point increase nationally to 9.7% in 2009.

Despite Montana’s better performance, there were a significant number of Montana workers who lost their jobs during the recession, and even Montanans who retained their jobs have experienced slower wage growth. The average wage increased from 2008 to 2009 by only 1.3%



to \$33,760; wage growth in prior years ranged from three to four percent.

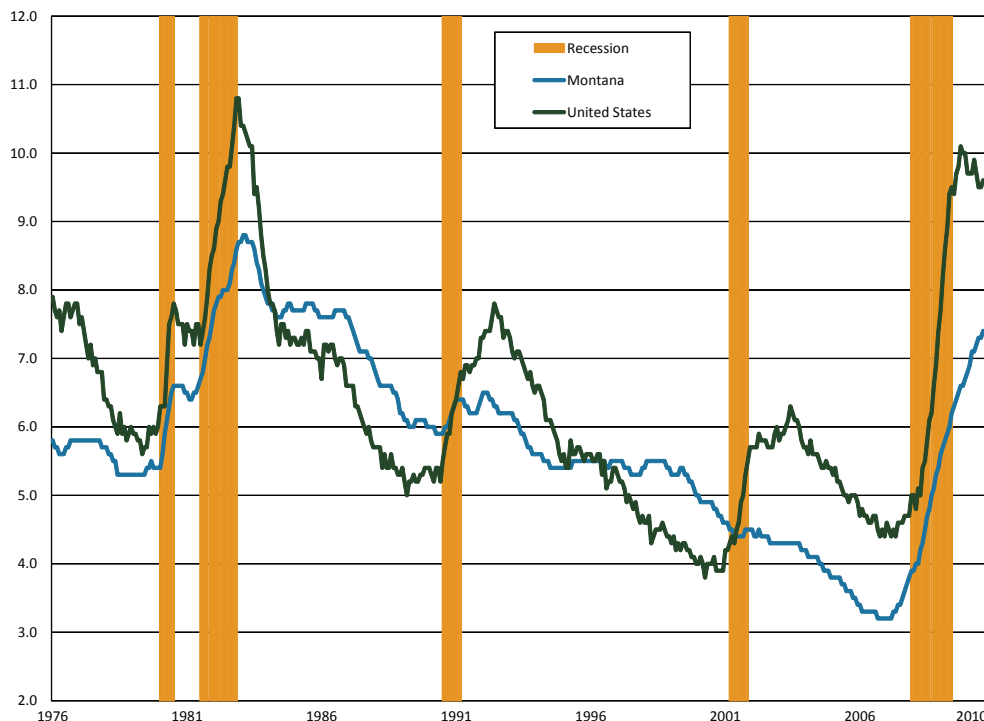
Although the recession is officially over and personal income growth has returned, job growth remains slow. Montana employment grew during the first half of 2010, but jobs were lost in the third quarter as government stimulus spending slowed. Some of this slow job growth is expected because strong labor productivity gains have reduced the demand for workers. Further, employment always lags an economic recovery. Figure 1 shows the U.S. and Montana unemployment rate since 1976 with

recessionary periods designated by the orange background. In recent recessions, the unemployment rate continued to increase after the recession officially ended.

There have been three industries that have continued to grow throughout the recession, helping to stabilize the Montana economy and providing job opportunities for dislocated workers from other industries – health care, public administration, and education. Public administration and education workers are predominantly hired by local, state, or federal governments, and benefited from government stimulus spending during the recession. Over 56% of government employment is hired at the local level, with 26% hired by the state. Government plays an important part of the Montana economy, comprising about 16% of GDP in 2008 and about 20% of employment during 2009. The industry also serves as a stabilizing, counter-cyclical force with slow growth in both economic prosperity and during downturns. Although government employment grew faster than private employment during this recession, private industry outpaced government hiring in the years leading up to the recession.

Health care was the fastest-growing industry during 2007-2009 with employment growth of 7.1% and a job gain of almost 4,100 workers from 2007 to 2009. Employment growth in health care has since slowed (see Figure 3). Health care related occupations, such as registered nurses, nurses’ aides, and home health care aides, are expected to continue to grow as the baby boom generation ages and demands more health care services. The growing health care occupations may provide employment opportunities for many workers who lost their jobs during the recession.

Figure 1. U.S./Montana Unemployment Rates and Recession



One way to examine the long-term impact of the recession on Montana's economy is to divide the industries into three categories based on their roles in the economy – base industries, consumer industries, and business-support industries. Base industries bring new money into Montana through exports and help drive growth in other industries through the increase in wealth. In Montana, these industries are generally natural resource based and include agriculture, mining, energy, manufacturing, and timber. According to the Montana Department of Commerce, the top exports from Montana are bulk wheat, inorganic chemicals, and industrial machinery. Table 2 lists these exports. In addition, federal government services can be thought of as a base industry in Montana because we receive more federal spending than what is paid by Montanans in federal taxes. Tourism can also be a base industry, although many of Montana's tourists come from within the state.

Table 2. Top 10 Exports from Montana Worldwide in Millions of U.S. Dollars

Rank	Export Category	Value (Millions of U.S. Dollars)
1	Bulk Wheat	447.40
2	Inorganic Chemicals	305.00
3	Industrial Machinery	156.00
4	Mineral Fuel, Oil, etc.	66.00
5	Ores, Slag, Ash	65.30
6	Vehicles, Parts, and Accessory Items	58.40
7	Organic Chemicals	57.70
8	Salt, Sulfur, Earth, and Stone	42.30
9	Paper & Paperboard	33.00
10	Miscellaneous Chemical Products	29.20

Source: Montana Department of Commerce Census and Economic Information Center

During 2008, the agriculture, mining, and energy sectors benefited from high commodity prices and were able to bring wealth into the state to support the state's economy during the first year of the downturn. Commodity prices decreased to long-term trends during 2009, however, leading to a 13% job loss in the mining industry from 2007-2009. Mining employment is relatively small, however, and the mining job loss was less than 1,000 workers. With stronger commodity prices in 2010, mining employment has regained many of their lost jobs. Figure 3 tracks employment levels in mining and other industries during the recession.

However, other base industries in Montana were more severely harmed by the recession. In particular, Montana manufacturers faced plant closures and job losses of over 3,000 jobs (14.8%) from 2001-2009 because of low worldwide demand for their products. Because many manufacturing processes are energy intensive, high energy prices harmed the manufacturing industry even while helping Montana's energy production industries. Over 53% of the manu-

facturing losses occurred in the wood products manufacturing industry and were related to the national downturn in the housing market. The wood products industry lost approximately 1,600 jobs in the past two years. Because the national housing market is expected to recover slowly, and because plant closures and mass layoffs have left holes in the supply chain for many manufacturers, the recession is likely to have long-term impacts on the logging and manufacturing industries in Montana.

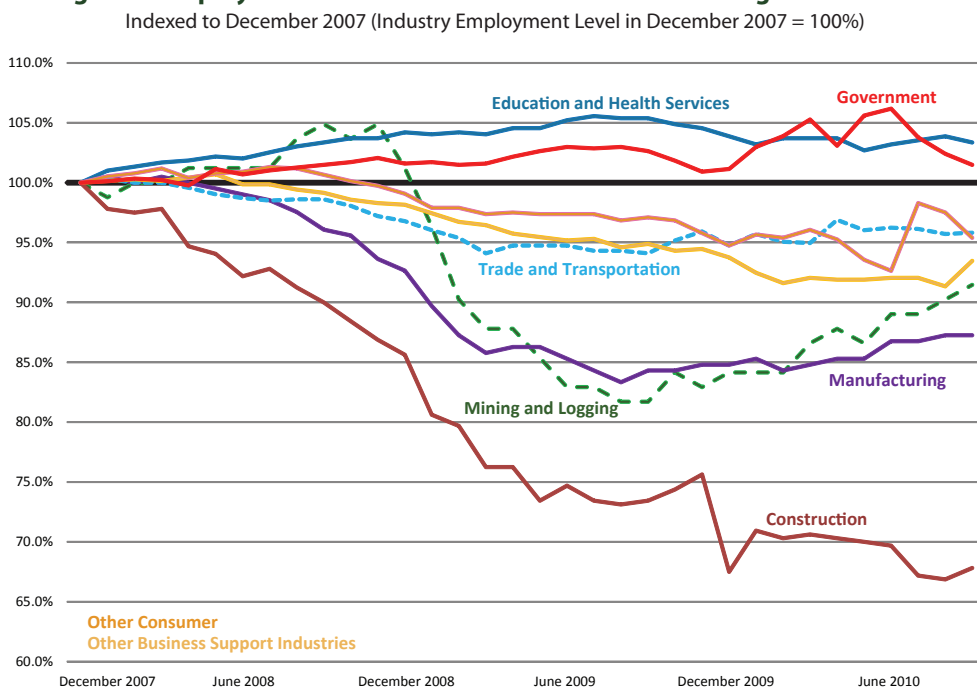
The new wealth brought into Montana by base industries drives economic growth in consumer-based industries. Consumer-based industries are industries where growth depends on an increase in population or income, such as construction, retail, health care, or entertainment. As large employers, consumer-based industries play a large role in our economy. However, these industries tend to pay lower wages because of a predominance of lower-skilled jobs. Consumer-based industries made up 61% of Montana's employment, but paid only 52% of wages in the second quarter of 2010.

With the large loss of jobs in manufacturing, wood products, and in other base industries, Montanans had less money to spend in consumer-based industries, resulting in further job losses. The construction industry was the worst hit industry with over 8,300 lost jobs from 2007 to 2009 – a decline of 24.2%, with job losses continuing in 2010. Construction jobs represent over 55% of the total number of jobs lost during the recession. The retail industry faced losses of over 3,700 jobs, but the percentage of jobs lost is smaller at 5.0% due to the large size of the industry.

Finally, the third industry category is business support industries, which require a nexus of economic activity to prosper. Business support industries, such as transportation and warehousing, wholesale, professional services, and administrative support services, depend on the growth of other industries. As the recession affected other industries in the state, the business support industries experienced a slow and steady decline in jobs. Losses in these industries are not as severe as the losses in construction, manufacturing, and retail, ranging from two to four percent of the 2007 employment. Business support services will need other industries to have stronger growth before regaining employment. In the long-term, continuing either amenity-driven population growth or economic growth will allow business support industries to prosper.

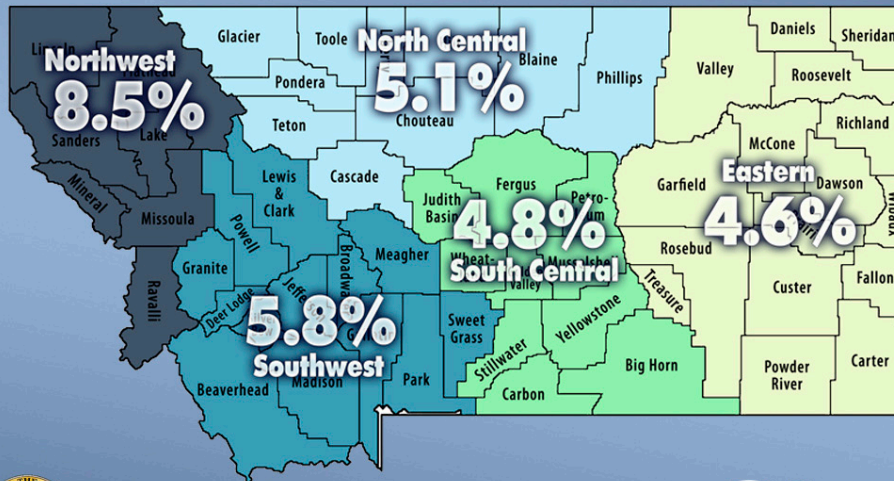
In summary, the Montana economy remains fairly reliant on traditional natural resource-based industries to bring in new money into the state. Many of these base industries will join the nation in economic recovery, but the recession's impacts on the wood products industry and on some manufacturers may be long-lasting. The performance of these base industries will drive growth in the consumer-based and service industries. Consumer-based industries were the fastest growing industries prior to the recession, and employ the majority of the state's workforce. As job and wage growth resumes as a part of economic recovery, consumer-based industries should prosper. Finally, the business support industries depend on a nexus of population and industry. All of these industries are interconnected and rely on each other for success.

Figure 3. Employment in Selected Montana Industries during the Recession





2009 Annual Unemployment Rates by Region



Montana
Department of Labor and Industry



Figure 4

Montana's Regions

The Northwestern portion of Montana felt the impact of the recession most acutely, largely because the region had a large concentration of construction, wood products, and manufacturing workers. All of these industries had large employment losses during the recession. The 2009 average unemployment rate for this region was 8.5%, as shown in Figure 4. In comparison, all other regions had unemployment rates of less than 6%.

In contrast, the Eastern portion of Montana has higher concentrations of employment in utilities and public administration than does the Western portion of the state, with a nearly average concentration in health care. The growth of these industries supported the Eastern Montana economy during the recession. In addition, the Eastern region was not as heavily reliant on the declining industries of construction, retail, and manufacturing as were other parts of the state. Further, the agriculture and mining industries posted relatively strong performances during 2008 due to high commodity prices, although these industries retracted when commodity prices declined.

Despite larger job losses in the Western portion of Montana, the Northwest and Southwest regions still have more jobs than other parts of the state. The more vibrant economies of Western Montana will likely regain their status as economic drivers of our state as the economy recovers from the recession.

Challenges to the Montana Economy

Reducing Unemployment

Although the recession is officially over, the Montana economy continues to face challenges as it exits the recession. The first and foremost of these challenges is to reduce unemployment by adding more jobs and ensuring that our workforce has the skills to fill the new jobs. Although our overall job growth depends on the economic performance of the U.S. and global economy, out-of-work Montanans can prepare themselves for opportunities when job growth resumes. Many industries, particularly construction and retail, have lost so many jobs that it will be difficult for workers to find jobs in their old occupation. For example, the Montana economy is expected to add over 100 new carpenter jobs per year as the economy recovers, but about 2,000 carpenters lost their jobs in the last two

Percent Change in Property Values Due to Reappraisal

	Residential	Commercial	Agricultural	Forest Land	Total
Montana	1.76	2.46	-4.66	-6.72	5.19
Daniels County	-3.42	-2.76	-5.66	0.00	-1.09
Phillips County	0.06	4.25	-4.87	-3.95	2.26
Richland County	3.20	-1.15	-2.75	0.00	11.16
Roosevelt County	-4.81	-2.43	-4.69	0.00	14.47
Sheridan County	-2.15	-0.38	-5.42	0.00	8.34
Valley County	-1.26	-0.20	-6.44	0.00	6.71

Source: Montana Department of Revenue

years, still leaving many of these workers without a job. These workers need to be retrained for jobs that have continued to grow throughout the recession, like those in the health care industry, in order to shorten their period of unemployment.

Aging Workforce

A longer-term challenge for the Montana economy is our aging workforce. According to the U.S. Census Bureau's population projections, the percentage of the Montana population that will be over the age of 65 is expected to reach 25% by 2030, making Montana one of the oldest states in the nation. The aging of our population will likely have obvious impacts on our economy, such as increased demand for health care, greater demand for the arts, and changes in state spending for both education and Medicare. The aging of the Montana population will likely drive changes in Montana's education system as well. There will be fewer young people graduating from Montana high schools and more non-traditional students in the Montana University System.

The aging of the population will also cause significant tightening of Montana's labor force. The U.S. Census Bureau's population projections indicate that the working age population in Montana (ages 18-65) will start to decrease starting in 2014, leaving businesses with fewer candidates for job openings. The recession has reduced the urgency posed by the changing demographics of Montana's workforce because of higher unemployment and because the loss of wealth during the recession has caused many workers to delay retirement. However, as our economy recovers, Montana's older workers will be leaving the workforce. Businesses need to plan for the loss of the knowledge and experience held by these workers and for the potential of a tight labor market in the future.



Federal ARRA Funds Awarded to Federal Agencies for Projects in Montana

Federal agency recovery awards granted in Montana as reported by recipients.

	Awards	Total Funds Awarded	Funds Per Capita	Funds Received	Local Amount	Jobs Reported
Corps of Engineers	83	31,119,433	32	12,052,085	23,750,292	125.58
Department of Agriculture	522	228,999,873	235	45,362,231	228,648,750	569.87
Department of Commerce	10	24,710,932	25	3,197,892	28,687,567	6.71
Department of Defense (except military departments)	3	940,714	1	891,041	940,714	
Department of Education	641	254,783,938	261	142,782,232	254,566,583	1,681.61
Department of Energy	137	98,884,317	101	25,668,316	125,125,460	209.27
Department of Health and Human Services	270	99,411,947	102	39,551,704	101,083,953	336.32
Department of Homeland Security	27	46,927,021	48	9,923,330	47,688,814	82.01
Department of Housing and Urban Development	50	40,575,921	42	26,026,787	40,575,921	278.39
Department of Justice	106	46,648,742	48	11,105,801	47,835,290	125.01
Department of Labor	60	20,950,269	21	13,009,832	18,718,090	95.82
Department of the Air Force	79	46,081,356	47	19,849,329	43,993,659	55.94
Department of the Army	1	2,527,200	3	2,137,556	2,527,200	11
Department of the Interior	211	121,136,937	124	72,050,481	121,150,873	641.28
Department of the Treasury	2	2,600,000	3	2,600,000	2,600,000	
Department of Transportation	164	292,750,431	300	206,123,442	290,768,051	965.16
Department of Veterans Affairs	12	4,647,311	5	528,439	4,647,311	6.02
Environmental Protection Agency	134	50,383,953	52	38,756,242	50,333,953	76.01
Executive Office of the President	1	13,574	0	13,574	13,574	
General Services Administration	47	66,616,969	68	5,491,124	54,870,279	31.46
National Aeronautics and Space Administration	3	99,784	0	99,784	218,958	0.44
National Foundation on the Arts and the Humanities	5	416,000	0	382,430	416,000	6.63
National Science Foundation	40	21,113,454	22	4,328,693	21,100,349	42.66
Other Independent Agencies	6	1,171,481	1	1,137,555	1,171,481	39.41
Unassigned	3	0	0	0	705,779	
Total	2,617	1,503,511,558	1,542	683,069,899	1,512,138,901	5,386.60

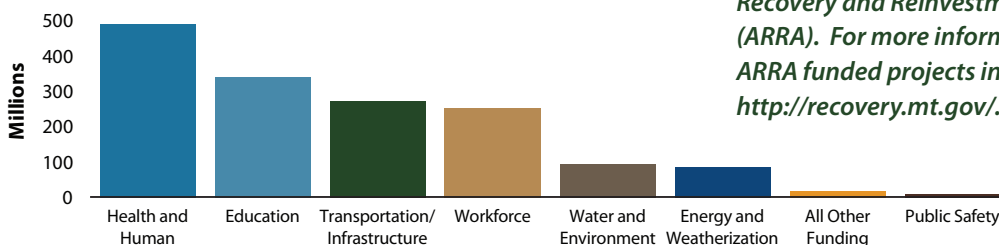
Source: Recovery.gov, November 2010

Broadband Technology Opportunity Program

Under the Broadband Technologies Opportunity Program (BTOP) and in partnership with the Bill & Melinda Gates Foundation, the Montana State Library will partner with 42 of Montana's public libraries to expand access to free, high-speed internet to 86% of the state's population by 2013. Though most local libraries have computers with internet access, many do not have enough computers, fast enough broadband speeds, or ADA-accessible computer facilities to provide adequate services for the thousands of Montanans who need it. As a result, library patrons currently have long wait times of up to two hours for computers, as well as unacceptably slow browsing speeds that inhibit library patrons' ability to apply for social services, find jobs, or complete research.

<http://www.msl.mt.gov/btop/>

Montana Reinvestment Act Project Categories



Source: <http://recovery.mt.gov/>, December 2010



2009 Montana ARRA Funds Awarded

County	Amount
Beaverhead	15,160,291
Big Horn	26,179,900
Blaine	11,507,677
Broadwater	4,472,857
Butte Silver Bow	49,695,135
Carbon	8,354,553
Carter	11,359,144
Cascade	78,805,111
Chouteau	3,243,647
Custer	10,868,688
Daniels	1,539,206
Dawson	9,272,730
Deer Lodge	9,141,378
Fallon	9,656,539
Fergus	14,960,424
Flathead	117,634,647
Gallatin	137,761,188
Garfield	726,212
Glacier	28,838,902
Golden Valley	715,716
Granite	3,382,894
Hill	20,518,576
Jefferson	25,233,220
Judith Basin	1,761,204
Lake	42,073,433
Lewis & Clark	72,455,559
Liberty	1,792,032
Lincoln	23,183,008
Madison	6,386,980
McCone	2,253,416
Meagher	7,682,950
Mineral	8,395,247
Missoula	141,742,279
Musselshell	3,633,199
Park	15,500,397
Petroleum	432,552
Phillips	12,798,377
Pondera	7,460,172
Powder River	1,243,929
Powell	16,419,596
Prairie	1,300,842
Ravalli	41,595,559
Richland	5,167,813
Roosevelt	24,451,178
Rosebud	15,271,410
Sanders	15,697,306
Sheridan	4,821,528
Stillwater	9,221,276
Sweet Grass	4,612,903
Teton	9,018,958
Toole	6,468,309
Treasure	460,621
Valley	5,686,257
Wheatland	1,636,591
Wibaux	1,871,705
Yellowstone	133,317,560
Pass through to states	16,188,675
Statewide	331,827,343
Unallocated	18,219,767

Source: www.recovery.mt.gov, November 2010

Demographics

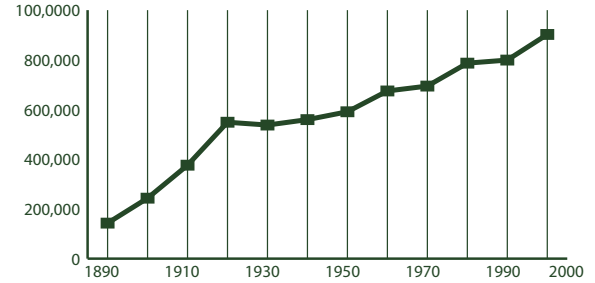
2008 Poverty and Median Income Estimates

Montana ranked 42nd among all U.S. states for median income in 2008.

	Median Household Income	% in Poverty All Ages	% in Poverty Ages < 18
United States	52,029	13.2	18.2
Montana	43,948	14.1	19.2
Daniels County	34,239	12.2	17.8
Phillips County	35,229	16.1	23.7
Richland County	49,838	11.2	14.6
Roosevelt County	32,671	25.7	40.1
Sheridan County	40,127	12.5	15.4
Valley County	39,344	14.5	21.6

Source: U.S. Census Bureau, Small Area Estimates Branch

Montana Historic Population Growth 1890 - 2000 Censes



Source: U.S. Census Bureau Population

Population Growth in Montana and Selected Counties

Montana's population density is about 6.5 persons per square mile.

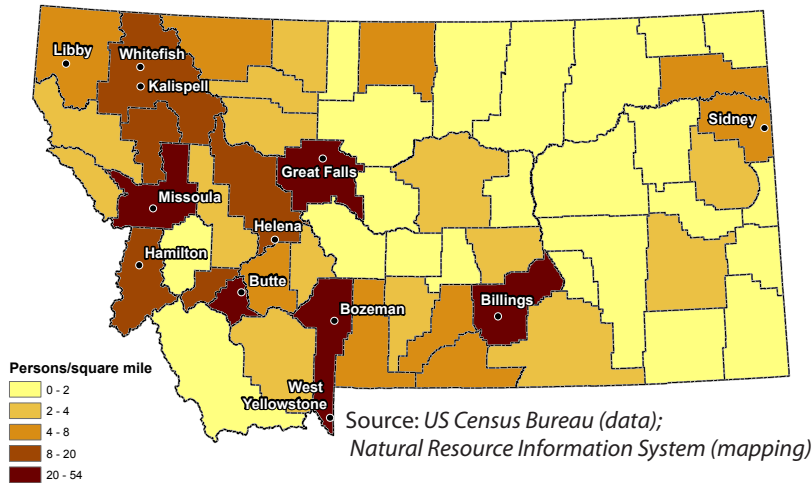
	2000 Census	2009 Estimate	Percent Growth
United States	281,421,906	307,006,550	.09
Montana	902,195	957,861	.08
Daniels County	2,017	1,703	-15.57
Phillips County	4,601	3,944	-14.28
Richland County	9,667	9,313	-3.66
Roosevelt County	10,620	10,303	-2.98
Sheridan County	4,105	3,243	-21.00
Valley County	7,675	6,771	-11.78

Source: U.S. Census Bureau

Look for preliminary 2010 Census data available from the US Census Bureau beginning in February, 2011 <http://2010.census.gov/>



2008 Population Density Estimates - Total Persons



2009 Population Estimates

Montana	
Male	487,981
Under 5 years	31,949
Under 18 years	112,780
18 to 64 years	310,778
65 years and over	64,423
Female	487,008
Under 5 years	30,489
Under 18 years	107,048
18 to 64 years	302,480
65 years and over	77,480
Total	974,989

Source: US Census Bureau, Population Estimates Program

Housing Units for Selected Counties

According to the U.S. Census Bureau, the total number of housing units in Montana increased 6.9% during this period.

	2000	2001	2002	2003	2004	2005	2006	2007	2008	2009	% Change
Daniels County	1,154	1,154	1,154	1,153	1,152	1,150	1,148	1,147	1,147	1,145	-0.78
Phillips County	2,502	2,504	2,503	2,501	2,499	2,507	2,504	2,499	2,494	2,488	-0.56
Richland County	4,557	4,564	4,561	4,564	4,571	4,576	4,594	4,602	4,622	4,624	1.47
Roosevelt County	4,044	4,045	4,041	4,038	4,035	4,048	4,050	4,046	4,038	4,035	-0.22
Sheridan County	2,167	2,165	2,164	2,160	2,156	2,160	2,156	2,151	2,147	2,143	-1.11
Valley County	4,847	4,840	4,832	4,823	4,818	4,837	4,829	4,819	4,810	4,799	-0.99

Source: U.S. Census Bureau, Population Estimates

Demographics

Corrections - Inmate Population

	2004	2005	2006	2007	2008	2009
Male Prison Beds	2,005	2,180	2,252	2,258	2,170	2,245
Montana State Prison - Deer Lodge	1,325	1,430	1,458	1,463	1,391	1,416
Great Falls Regional Prison	149	151	151	147	143	150
Dawson County Regional Prison - Glendive	140	141	142	142	141	143
Crossroads Correctional Center - Shelby	391	458	501	506	495	536
Actual population_male	2,005	2,180	2,252	2,258	2,170	2,245
Female Prison Beds	171	192	233	209	165	185
Montana Women's Prison - Billings	164	186	218	191	148	168
Intensive Challenge Program - MWP - Billings	7	6	15	18	17	17
Actual population_female	171	192	233	209	165	185

Source: Montana Department of Corrections, May 2010

Employment Status of Montana Women

In 2009, the Interagency Committee for Change by Women (ICCW) conducted a survey of women in the workforce. For more information visit <http://www.mdt.mt.gov/iccw/surveys/wwork.shtml>.

	1978	2009
Total Employed	45.30	94.7
Full-Time	30.50	84
Part-Time	14.80	10.6
Total Not Employed	54.60	5
Non-working	39.80	4.6
Retired	12.50	0.6
Disabled	2.3	0.1

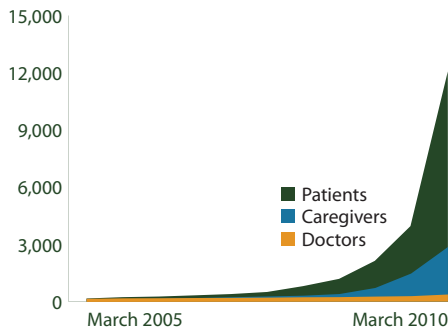
Source: 2009 Survey of Women and Work

Montana Children and Social Services

	Children's Population 2008	Percent of Children in Poverty 2008	Free/Reduced Price Lunch Eligibles 2008/09	Daycare Program Participants* 2007	Special Education Program Enrollment 2008/09	Healthy Montana Kids Enrollment 2009	Medicaid Enrollment 2009
Montana	220,358	21.0	51,333	8,051	17,636	17,465	46,463
Daniels County	271	17.8	99	2	60	51	49
Phillips County	765	23.7	446	40	93	138	239
Richland County	2,012	14.6	494	77	228	202	250
Roosevelt County	3,243	40.1	1,670	216	372	232	1,669
Sheridan County	485	15.4	233	44	99	74	104
Valley County	1,479	21.6	521	77	174	182	427

Source: MontanaKidsCount, <http://montanakidscount.org/> *facilities participating in state program

Montana Medical Marijuana Use Program



Source: Montana Medical Marijuana Program, June 2010

Montana Sexual or Violent Offender Registry Number of Convictions by Offense

Arson	94
Assault (including Aggravated Assault)	1,727
Dangerous Drugs	82
Family Offense	619
Homicide	138
Incest With A Minor	116
Kidnapping	76
Other	101
Robbery	536
Sex Offense	187
Sexual Assault	2,333
Total	6,004

Source: Department of Justice, Montana Sexual or Violent Offender Registry, September 2010

Veteran Population Projections

Montana is ranked second among the states for percent of the civilian population 18 years and over who are veterans. (13.9 percent, 2006-2008 American Community Survey)

	2000	2010	2020	2030
Montana	108,330	102,015	89,052	76,230
Daniels County	259	215	158	105
Phillips County	446	315	228	169
Richland County	875	811	669	533
Roosevelt County	1,069	874	726	605
Sheridan County	398	268	188	133
Valley County	971	659	433	292

Source: United States Department of Veteran Affairs, October 2007

Temporary Assistance For Needy Families (TANF) Comparison

	2005 Cases	2005 Case Avg	2009 Cases	2009 Case Avg	Apr 2010 Cases	Apr 2010 Case Avg
Montana	4,820	356	3,466	392	3,784	426
Daniels County	3	353	3	440	0	0
Phillips County	5	328	5	375	8	399
Richland County	10	306	3	339	8	452
Roosevelt County	564	382	331	388	326	431
Sheridan County	4	501	8	360	4	412
Valley County	62	373	30	338	41	380

Source: Montana Department of Public Health and Human Services, April 2010

Education

Schools in Senate District 18

There are 832 public K-12 and 14 private accredited schools in Montana. Montana also has 15 public, 6 private, and 7 tribal colleges. Senate and House district figures in the table below show the number of schools located in cities within 10 miles of the district's boundaries.

	Montana	Senate District 18	House District 35	House District 36
High Schools	173	47	28	27
Middle Schools	213	51	32	31
Elementaries	446	73	47	46
Total	832	171	107	104

Source: Office of Public Instruction, September 2010

Montana School Size and Enrollment 2009 - 2010

School Size	Percent of Schools	Enrollment	Percent of Enrollment
>500	6	42,927	30
250 to 499	19	56,027	40
100 to 249	19	26,444	19
50 to 99	14	8,563	6
<50	41	7,846	6
Total	100	141,807	100

Source: OPI Facts About Montana Education, September 2010

School Districts - Number of in Area

	Senate District 18	House District 35	House District 36
Elementary	16	8	2
Secondary	14	7	2
Unified	13	6	1
Total	43	21	5

Source: Montana Base Map Service Center, November 2009

Montana Dropout Rate - Percent of Total Enrollment

Grade / Gender	2004-05	2005-06	2006-07	2007-08	2008-09	5-yr Average
7 & 8 Total	0.2%	0.2%	0.3%	0.3%	0.3%	0.2%
Male	0.2%	0.2%	0.3%	0.3%	0.4%	0.3%
Female	0.1%	0.2%	0.3%	0.3%	0.2%	0.2%
HS Total	3.3%	3.6%	3.7%	5.2%	5.1%	4.2%
Male	3.6%	3.9%	4.2%	5.5%	5.6%	4.5%
Female	3.1%	3.3%	3.2%	4.8%	4.6%	3.8%
Overall Total	2.3%	2.5%	2.7%	3.6%	3.6%	2.9%
Male	2.5%	2.7%	3.0%	3.9%	3.9%	3.2%
Female	2.1%	2.3%	2.3%	3.4%	3.2%	2.6%

Source: Montana Statewide Graduate and Dropout Report, 2008 - 2009 School Year

2009 Youth Risk Behavior Survey - Percentage of Respondents

		1995	1997	1999	2001	2003	2005	2007	2009
Drove when drinking alcohol during the past 30 days	U.S.	15.4	16.9	13.1	13.3	12.1	9.9	10.5	9.7
	Montana	27.4	26.7	22.7	21.8	20.4	18.5	16.0	13.5
Rode with a driver who had been drinking alcohol during the past 30 days	U.S.	38.8	36.6	33.1	30.7	30.2	28.5	29.1	28.3
	Montana	48.1	46.6	43.1	39.3	36.9	34.4	32.9	28.8
Carried a weapon (gun, knife, or club) during the past 30 days	U.S.	20.0	18.3	17.3	17.4	17.1	18.5	18.0	17.5
	Montana	22.6	23.8	20.3	21.4	19.4	21.4	22.1	23.0
Current cigarette use (smoked cigarettes during the past 30 days)	U.S.	34.8	36.4	34.8	28.5	21.9	23.0	20.0	19.5
	Montana	34.8	38.1	35.0	28.5	22.9	20.1	20.0	18.7
Current alcohol use (drank alcohol during the past 30 days)	U.S.	51.6	50.8	50.0	47.1	44.9	43.3	44.7	41.8
	Montana	58.2	59.0	57.6	54.1	49.5	48.6	46.5	42.8
Binge drinking (5 or more drinks within a couple hours during the past 30 days)	U.S.	32.6	33.4	31.5	29.9	28.3	25.5	26.0	24.2
	Montana	43.1	44.4	43.6	41.4	37.3	34.4	32.7	30.1
Current marijuana use (used marijuana during the past 30 days)	U.S.	25.3	26.2	26.7	23.9	22.4	20.2	19.7	20.8
	Montana	20.1	26.9	25.5	27.1	23.1	22.3	21.0	23.1
Ever had sexual intercourse	U.S.	53.1	48.4	49.9	45.6	46.7	46.8	47.8	46.0
	Montana	47.0	45.9	42.5	43.9	43.6	43.6	45.7	47.6
Attempted suicide during the past 12 months	U.S.	8.7	7.7	8.3	8.8	8.5	8.4	6.9	6.3
	Montana	8.5	8.4	6.7	10.4	9.7	10.3	7.9	7.7

Source: U.S. Census Bureau

National Assessment of Education (NAEP) Progress Historical Performance in Montana Schools

Subject	Grade	Year	State Average	National Average
Mathematics (scale: 0-500)	4	1996 ⁿ	228	222
		2003	236	234
		2005	241	237
		2007	244	239
		2009	244	239
	8	1990 ⁿ	280	262
		1996 ⁿ	283	271
		2003	286	276
		2005	286	278
		2007	287	280
Reading (scale: 0-500)	4	1994 ⁿ	222	212
		1998	225	213
		2003	223	216
		2005	225	217
		2007	227	220
	8	2009	225	220
		1998	271	261
		2003	270	261
		2005	269	260
		2007	271	261
Science (scale: 0-300)	4	2000	160	145
		2005	160	149
		1996 ⁿ	162	148
		2000	164	148
		2005	162	147
	8	2002	149	153
		1998	150	148
		2002	152	152
		2007	157	154
		2009	157	154

ⁿ Accommodations were not permitted for this assessment

Source: National Center for Education Statistics



Libraries

There are 761 libraries in Montana. Senate and House district figures in the table below show the number of libraries located in cities within 10 miles of the district's boundaries. For more detailed information on Montana's libraries visit http://www.msl.mt.gov/For_Librarians/Library_Directory/.

Source: *Montana State Library, November 2010*

	Montana	Senate District 18	House District 35	House District 36
Public	81	7	3	4
Branches	31	6	3	3
Bookmobiles	3	0	0	0
School	562	47	22	25
Academic	28	1	0	1
Special or Other	56	1	0	1
Total	761	62	28	34

Montana Talking Book Library

Services for Blind or Disabled Montanans

- In 2009-2010, our 5 employees and 100 volunteers provided FREE specialized library services, via mail or download, by circulating 259,382 books and materials to 4,173 blind or disabled Montana veterans and residents of all ages. Since 2009, we served an additional 1,097 more patrons - a 28% increase.
- Our patrons benefit from a variety of access options: the newest easy-to-use, accessible digital book program; free digital talking book machines delivered to patrons' homes; free eLibrary with 20,000 books to download; 63,000 additional book titles and 80 periodicals for loan in one or more formats; access to radio or phone newspaper services.
- Our Montana Recording Program has produced over 1,000 Montana books for all ages.
- Our Montana Braille /Twin Vision Program has produced over 442 books for Montana children.
- Special funding from the 2009 Legislature successfully provided patrons of MONTANA AUDIO Information Network (formerly Montana Radio Reading Service) and Montana Association for the Blind with improved access and expanded newspaper resources.



For more information:

<http://msl.mt.gov/tbl/> OR 1-800-332-3400

Senate and House district figures in the table below show the number of patrons located in cities within 10 miles of the district's boundaries.

	Montana	Senate District 18	House District 35	House District 36
Total Patrons	4,173	194	107	119
Veterans Who Are Patrons	409	14	7	12
Patron Count by Disability				
Blindness	1,212	47	32	21
Low Vision	2,129	91	54	53
Physical	350	24	10	20
Reading	482	32	11	25

Source: *Montana Talking Book Library*

Montana Public Libraries Fast Facts

- Montana's public libraries hold 3,348,859 items.
- Montanans visited their public libraries an average of five times throughout the year, for a total of 4,429,464 visits in 2009.
- Montana library patrons checked out 6,244,116 items in 2009, about seven items per person.
- Librarians in Montana's public libraries fielded 428,844 reference questions in SFY 2009, or 8,247 questions per week.
- 100% of all Montana libraries provide Internet access to patrons
- Nearly half of all Montanans (442,311) have a library card.

Montana Shared Catalog Statistics

The Montana Shared Catalog helps Montana libraries meet today's library users demands. It gives Montanans a rich and easy-to-use catalog including more than 3.3 million items which patrons circulated 4,178,877 times in SFY 2010. Additional groups that partner to share their catalogs include the 4 Rivers, BridgerNet, and Partners groups. Senate and House district figures below show the number of libraries located in cities within 10 miles of the district's boundaries.



Montana Shared Catalog Senate District 18

Public and Branch Libraries
Culbertson Public Library, *Culbertson*
Froid Branch Library, *Froid*
Glasgow City-County Library, *Glasgow*
Poplar City Library, *Poplar*
Roosevelt County Library, *Wolf Point*
Sheridan County Library, *Plentywood*
Sidney-Richland County Library, *Sidney*

Havre-Hill County library director, Bonnie Williamson, using the Montana Shared Catalog system to check out a book to a patron.

	Montana	Senate District 18	House District 35	House District 36
Participating Libraries	132	7	2	6
Patrons	364,554	9,467	5,162	6,658
Items	3,325,517	171,541	99,725	117,524
Partner Group Libraries	28	0	0	0

Statewide Library Training

The Montana State Library's consultants travel throughout Montana and meet one-on-one with librarians and library trustees across the state, assisting with everything from training and technology to applying Montana library law and fundraising basics. In the last fiscal year, MSL's consultants traveled over 60,000 miles, made over 2,000 contacts and completed over 400 visits with Montana's library community.

Total Attendees	1,321
Number of Workshops	113
Number of different Montana locations	63

Time period: January 2009 - December 2010

Source: *Montana State Library*



Statewide Library Resources

The Montana State Library works on behalf of all Montana libraries to help them provide the latest and best information and library services to their patrons – your constituents. We negotiate on behalf of libraries across the state to get the best rate on cutting-edge library products and services, on which many Montanans depend for everything from making health care decisions to finding a job. Examples include our statewide contract with OCLC, a worldwide consortium of libraries dedicated to providing top-notch library services and a subscription to the genealogy database, HeritageQuest which is available to all public libraries in the state. Without statewide library projects, some of which are listed here, many Montanans would be left behind in this age of information.

Statewide Databases

Thanks to an allocation from the Montana legislature, the Montana State Library offers statewide databases to all Montana library patrons. Access to this completely online collection – accessible in the library, at home, or on a mobile device – includes hundreds of databases and thousands of full text articles on everything from business resources to health information.

Ready 2 Read

The Montana State Library's Ready 2 Read program is designed to help parents and caregivers understand the value of sharing language and literacy with their children and the importance these skills play throughout a person's life. So far, 45 libraries have received extensive early childhood training and a large number of materials to serve Montana's youngest library patrons; additionally these 45 libraries now offer programming just for children ages 0 – 3.



<http://ready2readmontana.org/>

Courier Pilot Project

As access to quality information has become a vital part of our lives, the Montana State Library is working on a number of ways for libraries to share information and materials affordably and dependably. One of these methods is the Montana Courier Project, which uses a commercial courier service to ship library materials and resources around the state. As the pilot participation has grown, participating libraries are seeing increasingly significant savings in the cost of moving library materials around the state.

Participating Libraries

Senate and House district figures in the table below show the number of libraries located in cities within 10 miles of the district's boundaries.

	Montana	Senate District 18	House District 35	House District 36
Statewide Databases	762	53	28	34
OCLC	250	15	4	12
Courier Project	34	6	3	4
MontanaLibrary2Go	48	7	2	6
HeritageQuest	86	9	3	7
Montana Memory Project	15	1	0	1

Source: *Montana State Library*

Montana's Cultural Heritage

In partnership with the Montana Historical Society and other partners, the Montana State Library helps to ensure that Montanans have ready access to our Montana cultural heritage. The Montana Memory Project provides online access to digitized copies of historic as well as contemporary material that serve as a resource for education, business, pleasure, and lifelong learning. <http://mtmemory.org/>



First train from St. Paul, over the last spike enroute to Portland, OR. September 8, 1883
Montana Historical Society Photo Archives
Montana Memory Project

Additionally, the Montana State Library launched the online companion to the Montana Historical Society's *Montana Place Names: From Alzada to Zortman*. This web mapping application makes discoverable the history of more than 1,200 Montana place names and includes all the photos and descriptions found in the book. <http://mtplacenames.org/>

State Publications Available Online!

The Montana State Library is digitizing our legacy print state publications collection of 55,000 publications dating to 1874. To date, nearly one million pages have been digitized. All of these publications are available online in a variety of formats at <http://statepublications.mt.gov>. Use of these items is 250 times more frequent than traditional print.

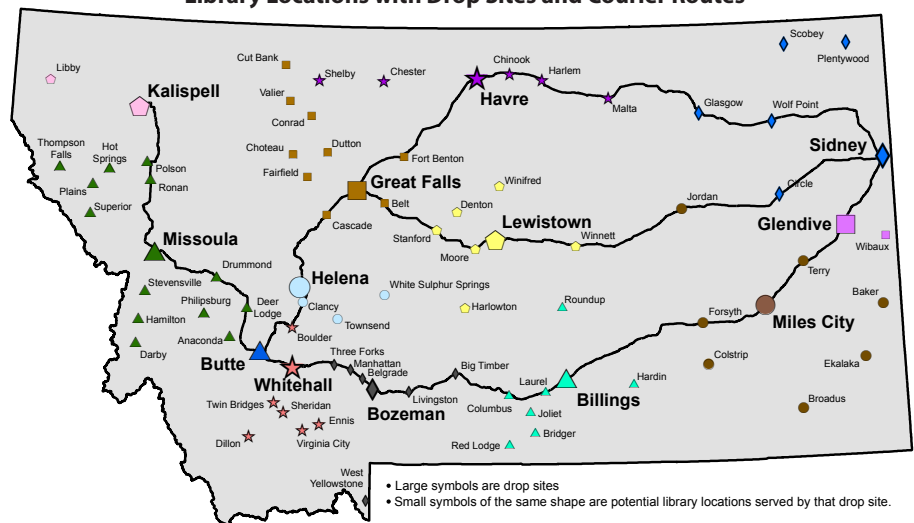
Montana Library 2 Go

Montana library patrons are reading more books on mobile devices than ever before and Montana libraries are delivering the goods with Montana Library 2 Go, a collection of downloadable audio and E-book titles to patrons of participating libraries. Titles are available for download on MP3 players, iPods, iPads and other playing and reading devices.

GIS Portal

Funded by the 2007 Legislature and first launched in 2008, the Montana GIS Portal serves as Montana's primary online resource to discover geospatial data. The Portal provides online access to hundreds of datasets in a variety of formats for use in maps, web mapping applications and geospatial analyses. <http://gisportal.msl.mt.gov/>

Montana Library Courier/Delivery Service Pilot Library Locations with Drop Sites and Courier Routes



• Large symbols are drop sites
 • Small symbols of the same shape are potential library locations served by that drop site.

Source: *Montana State Library, December 2010*

Land

Land Ownership

Senate District 18 ranks number 3 in size and is 11,597.918 square miles, or about 8% of Montana's total land area (146,923.321 square miles). The average senate district in Montana is 2,938 square miles and the average house district is 1,469 square miles.

Owner	Montana		Senate District 18		House District 35		House District 36	
	Area (Sq Mi)	%	Area (Sq Mi)	%	Area (Sq Mi)	%	Area (Sq Mi)	%
Private	95,738	65	9,223	80	3,382	66	5,841	90
Local Government	32	< 1	4	< 1	4	< 1	0	0
Montana Fish, Wildlife and Parks	470	< 1	2	< 1	1	< 1	< 1	< 1
State Trust Land	8,020	5	887	8	370	7	517	8
Other State Land	89	< 1	0	0	0	0	0	0
US Bureau of Land Management	12,451	8	1,394	12	1,333	26	61	< 1
US Fish and Wildlife Service	1,373	< 1	55	< 1	6	< 1	49	< 1
US Forest Service	26,317	18	0	0	0	0	0	0
US National Park Service	1,829	1	< 1	< 1	0	0	< 1	< 1
Other Federal Land	318	< 1	19	< 1	18	< 1	< 1	< 1
Total	146,923		11,598		5,125		6,473	

Source: Montana Natural Heritage Program, July 2010

Private Land Agricultural Use

Owner	Montana		Senate District 18		House District 35		House District 36	
	Acres	%	Acres	%	Acres	%	Acres	%
Continuous Crop	25,468	< 1	6	< 1	0	0	6	< 1
Fallow Crop	13,281,791	16	2,752,761	46	851,796	34	1,900,965	55
Farmstead	0	0	0	0	0	0	0	0
Grazing	49,048,154	59	3,072,807	51	1,564,474	62	1,508,333	43
Irrigated	5,220,163	6	133,867	2	89,731	4	44,136	1
Timber	14,168,777	17	0	0	0	0	0	0
Wild Hay	1,097,282	1	33,859	< 1	6,958	< 1	26,901	< 1
Total	82,841,635		5,993,300		2,512,958		3,480,342	

Source: Montana Department of Administration Information Technology Services Division - Geographic Information Services, October 2010

Conservation Easements (Acres)

	Montana	Senate District 18	House District 35	House District 36
	Bitter Root Land Trust	2,422	0	0
City Government	601	0	0	0
Clark Fork- Pend Oreille Conservancy	151	0	0	0
County Government	528	0	0	0
Ducks Unlimited (Wetlands America Trust)	16,979	0	0	0
Five Valleys Land Trust	37,763	0	0	0
Flathead Land Trust	8,054	0	0	0
Gallatin Valley Land Trust	36,149	0	0	0
Montana Department of Transportation	938	121	121	0
Montana Fish, Wildlife, and Parks	384,984	403	403	0
Montana Land Reliance	831,566	0	0	0
National Wildlife Federation	20	0	0	0
Prickly Pear Land Trust	3,246	0	0	0
Rattlesnake Land Trust	190	0	0	0
Rocky Mountain Elk Foundation	49,220	0	0	0
Salish and Kootenai Tribe	102	0	0	0
The Bighorn Institute	1,443	0	0	0
The Nature Conservancy	309,443	11,460	9,460	2,000
The Vital Ground Foundation	833	0	0	0
US Bureau of Reclamation	42	0	0	0
US Department of Agriculture	17,652	0	0	0
US Fish and Wildlife Service	232,456	87,570	19,068	68,502
US Forest Service	20,038	0	0	0
Total	1,955,555	99,554	29,052	70,501

Source: Montana Natural Heritage Program

Montana Spatial Data Infrastructure

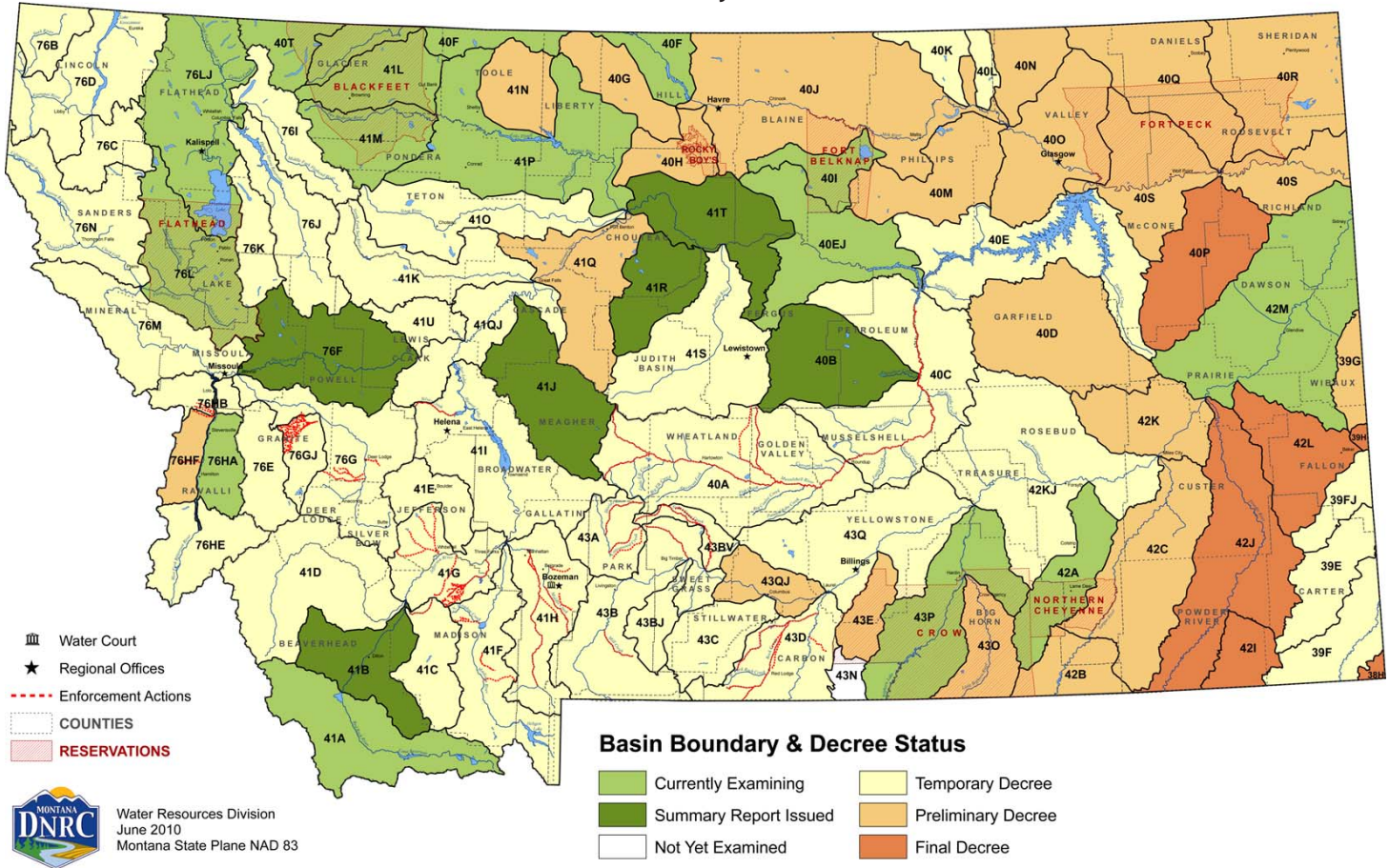
The Montana Spatial Data Infrastructure (MSDI) is a digital representation of Montana's physical and cultural landscape that allows the state to be mapped. Some of the individual components of the MSDI are roads, lakes and streams, land ownership, administrative boundaries, soils, land use, structures, aerial photographs, watersheds, wetlands, elevation, and geology.

This information is fast becoming a critical element for policy review at the state and local levels in both the public and private sectors. For more information see: <http://giscoordination.mt.gov/>.



The Department of Natural Resources and Conservation maintains a database of water rights to assist Montana citizens and the Montana Water Court in the water rights adjudication process. Visit their site at http://dnrc.mt.gov/wrd/water_rts/.

Basin Location and Adjudication Status



Dams in Senate District 18

There are 3,666 dams in the national inventory of dams for Montana. Predominant uses are stock/farm ponds (48%) and irrigation (22%). Additional dams not included in the inventory can be found by searching for water rights.

Source: *National Inventory of Dams, USGS Geographic Names Information System, September 2003*

Type	Montana	Senate District 18	House District 35	House District 36
Debris Control	1	0	0	0
Fish and Wildlife Pond	1	0	0	0
Flood Control	43	5	2	3
Hydroelectric	26	0	0	0
Irrigation	822	34	20	14
Recreation	54	10	0	10
Stock/Small Farm Pond	1,771	137	50	87
Tailings	8	0	0	0
Water Supply	44	0	0	0
Other	68	7	2	5
Unknown	828	92	62	30
Total	3,666	285	136	149

Public Water Supplies

There are 3,266 public water supplies located in the State of Montana, 82 of which are located in Senate District 18. These figures do not include public water supplies serving Native American nations.

	Count
House District 35	
Public, community	22
Public, non-community, non-transient	3
Public, transient	12
House District 36	
Public, community	29
Public, non-community, non-transient	1
Public, transient	15

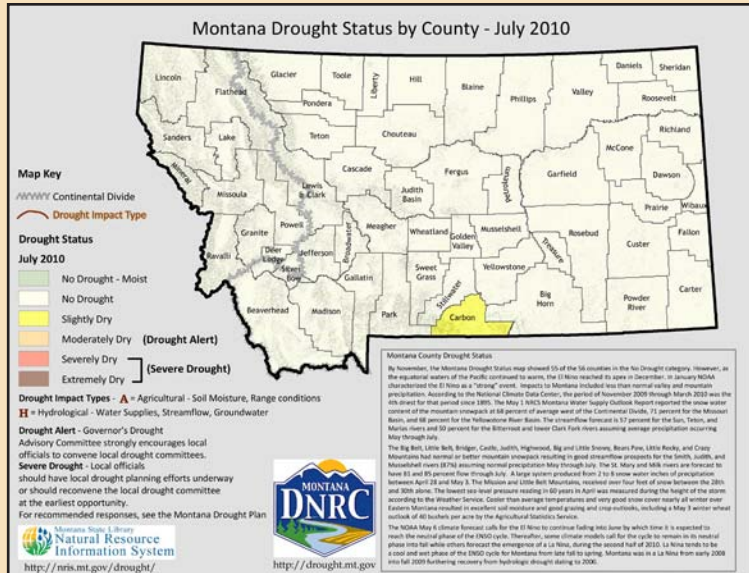
Source: *Department of Environmental Quality, December 2007*



Montana Drought Resources

The Montana Governor's Drought Advisory Committee is charged with monitoring, forecasting, and reporting water supply and moisture conditions, enabling Montanans to make timely and informed decisions to mitigate drought impacts in a proactive manner.

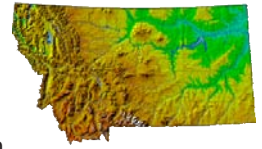
For up-to-date information and maps on Montana's current drought situation visit <http://drought.mt.gov/>.



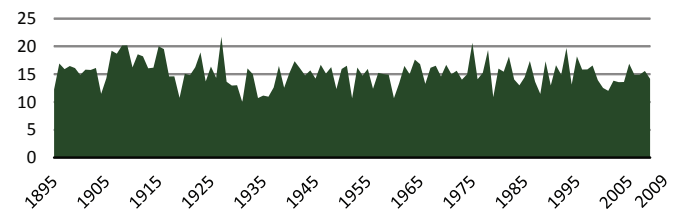
Source: Natural Resource Information System

Montana Digital Atlas

Additional mapping and data capabilities are available through the Montana State Library at <http://nris.mt.gov/>. The Montana Digital Atlas provides unlimited access to detailed information on such issues as climate, environmental impacts, land information, water, and cultural data.



Montana Annual Precipitation in Inches (1895 - 2009)



Source: NOAA Satellite and Information Service

Montana Fires 2002 - 2008

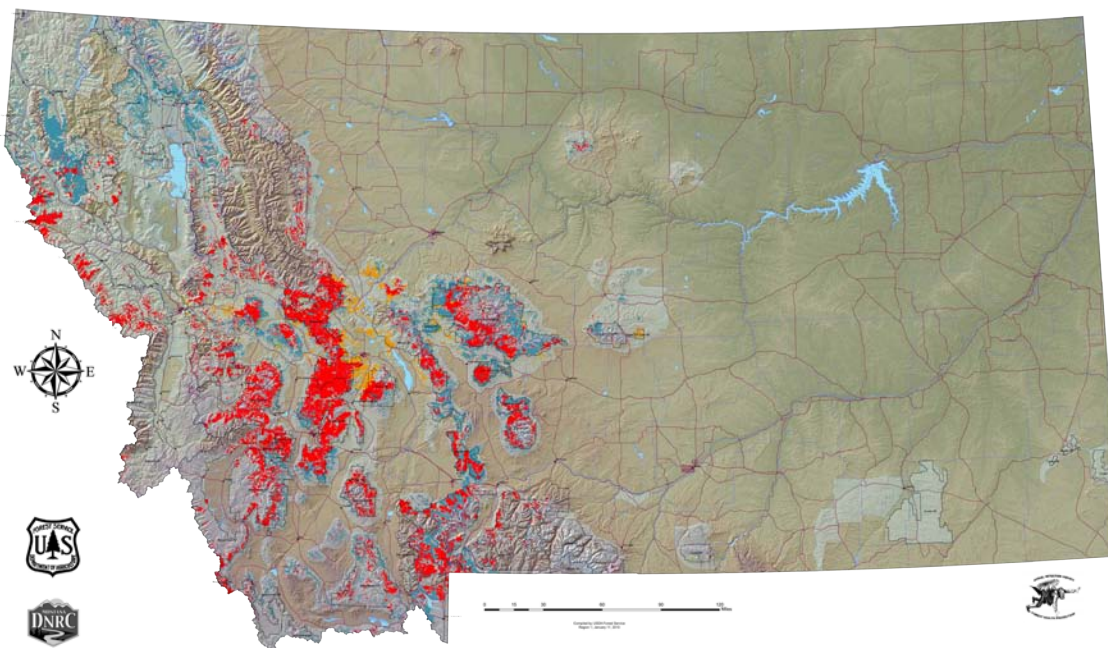
All Fires As Reported by All Agencies

Year	Count	Acreage
2002	1,372	110,309
2003	2,326	736,809
2004	1,447	18,445
2005	1,316	103,294
2006	2,302	1,047,118
2007	1,875	778,079
2008	1,424	166,842

Source: Department of Natural Resources and Conservation

2009 Aerial Detection Survey Data - Insect and Disease Outbreaks in Montana

As Detected by Forest Health Protection's (FHP) Aerial Insect and Disease Detection Survey - USDA Forest Service.



Disclaimer

The sources of the digital map layer used to compile the base map upon which the insect and disease data are presented vary in both source and scale, therefore, accuracy is not guaranteed.

The insect and disease data should be used only as an indicator of insect and disease activity, and should be ground-truthed for actual location and causal agent. Polygons indicate locations of tree mortality, defoliation, and/or other damage. Intensity of damage is variable, and not all trees and areas indicated are dead or damaged. The joint cooperators reserve the right to correct, modify, update, or replace the data as necessary. Using this data for purposes other than those for which it was intended may yield inaccurate or misleading results.

Energy, Mines

Oil and Gas Wells in Senate District 18

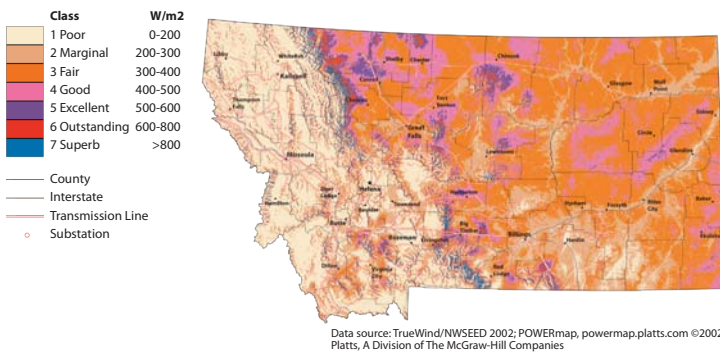
	Montana	Senate District 18	House District 35	House District 36
Coal Bed Methane, Active	1,117	0	0	0
Coal Bed Methane, Inactive	40	0	0	0
Gas, Active	7,351	1,685	1,680	5
Gas, Inactive	2,509	448	431	17
Gas Storage, Active	272	0	0	0
Gas Storage, Inactive	14	0	0	0
Injection, Active	1,109	125	9	116
Injection, Inactive	749	70	1	69
Oil, Active	7,230	1,463	48	1,415
Oil, Inactive	4,511	533	55	478
Total	24,902	4,324	2,224	2,100

Source: Montana Board of Oil and Gas Conservation, October 2008

Additional information about oil and gas wells is available through the Board of Oil and Gas Conservation's WebMapper which can be accessed at <http://bogc.dnrc.mt.gov/>.

Energy Atlas

Wind Power at 50 Meters - Wind Power Density



Abandoned Mines and Remediation Sites

	Abandoned Mines	Remediation Sites
Montana	6,954	765
Senate District 18	522	21
House District 35	50	9
House District 36	472	12

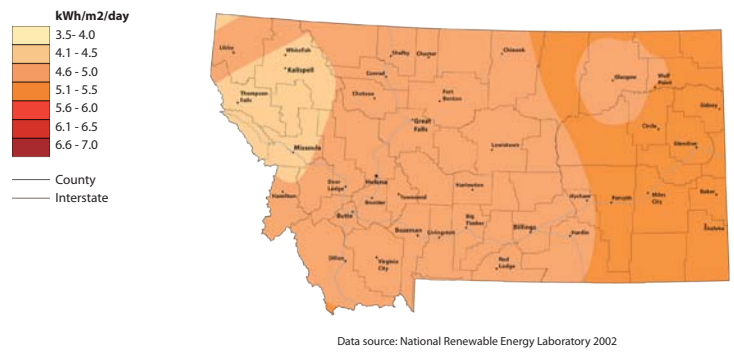
Source: Montana Department of Environmental Quality, November 2010

Montana House Heating Fuel

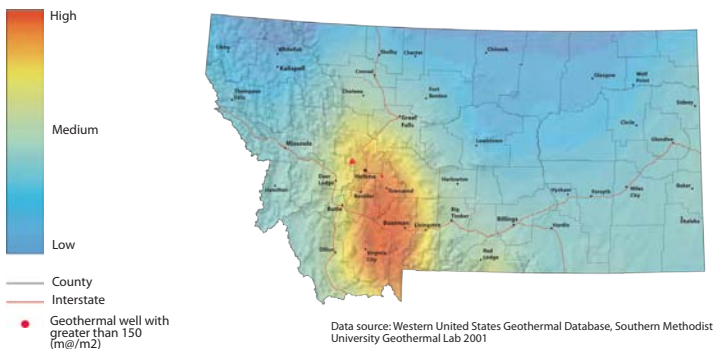
Occupied housing units	373,455	100%
Utility gas	215,172	57.6%
Bottled, tank, or LP gas	49,291	13.2%
Electricity	66,504	17.8%
Fuel oil, kerosene, etc.	7,126	1.9%
Coal or coke	841	0.2%
Wood	29,473	7.9%
Solar energy	235	0.1%
Other fuel	4,064	1.1%
No fuel used	749	0.2%

Source: 2006-2008 American Community Survey 3-Year Estimates

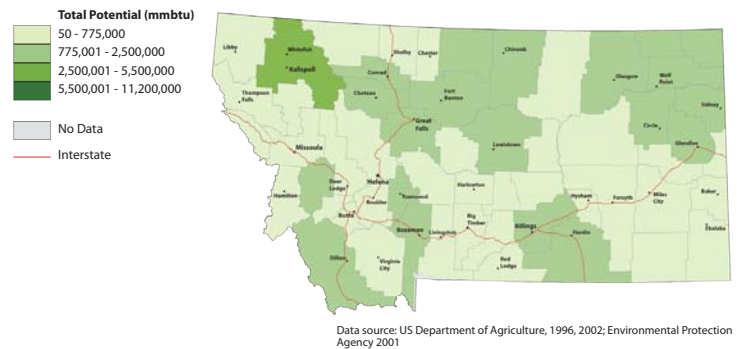
Solar Insolation Annual Average



Geothermal Potential



Total Energy Potential from Biomass Residue



Find additional energy related data and maps at <http://www.energyatlas.org/>

Pipelines in Senate District 18

	Montana		Senate District 18		House District 35		House District 36	
	Count	Miles	Count	Miles	Count	Miles	Count	Miles
Crude Oil	90	1,970	4	151	0	0	4	151
Natural Gas	360	3,301	40	335	13	136	27	198
Refined Product	47	805	0	0	0	0	0	0
Other	24	402	1	1	0	0	1	1
Total	521	6,477	45	486	13	136	32	350

Source: Pipeline Integrity Management Mapping Application, December 2006

Wildlife and Recreation

Species Diversity in Senate District 18

	Montana (Count)	Senate District 18 (Count)	% of Montana Species
Amphibians	13	6	46
Birds	328	244	74
Fish	81	58	72
Mammals	107	64	60
Reptiles	17	13	76

Source: Montana Natural Heritage Program

Recreation Area (Acres)

	Senate District 18
Fishing Access Sites	271
Fishing Conservation Areas	0
State Parks	451
Wildlife Conservation Easements	0
Wildlife Protection Areas	0
Wildlife Management Areas	2,277
Total	2,999

Source: Montana Fish, Wildlife, and Parks

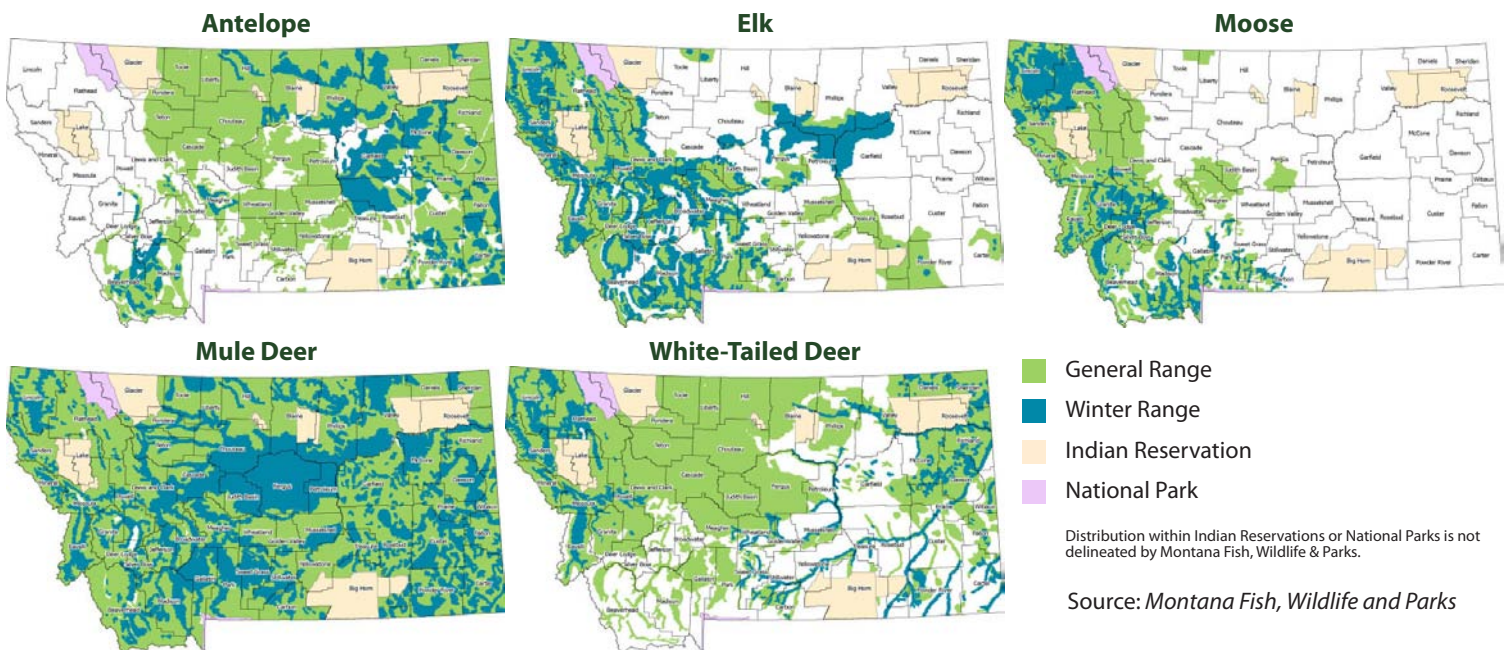
Block Management Acreage

There are a total of 7,522,358 acres of Block Management land (excluding Plum Creek*) in the State of Montana. 472,400.00 of those acres or 6% are located in Senate District 18.

*Plum Creek land in FWP's Regions 1 and 2 are not included in these statistics. Although they are part of the Block Management Program, they are not traditional BMA's and are managed differently.

Source: Montana Fish, Wildlife and Parks

Big Game Distribution



Montana is blessed with a wealth of wildlife and habitat diversity. These resources provide exceptional opportunities for recreation and contribute substantially to the state's economy and quality of life.

Wildlife Highlights

For more information on animals, plants, and habitats in your Senate District, visit the Montana Natural Heritage Program at <http://mtnhp.org>. Resources include:

- Montana Field Guide - an encyclopedia of the distribution, status, and biology of Montana's animals, plants, and biological communities
- Natural Heritage Tracker and Map Viewer – interactive maps of animals, plants, land cover, and land stewardship
- Land Stewardship Maps – public lands, conservation easements, and special designations
- Wetland and riparian mapping information
- Reports on Montana's Species of Concern
- Quick responses to data requests and answers from expert scientists on Montana's plants, animals, and biological communities.

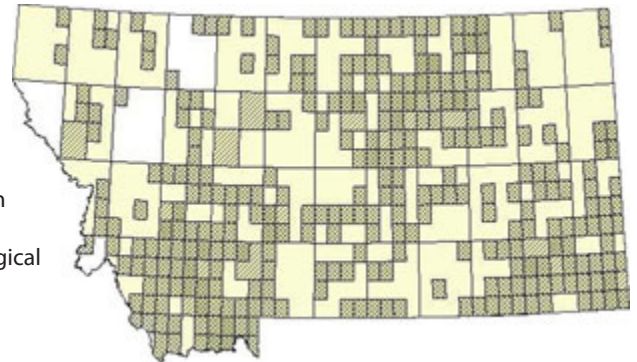
Brewer's Sparros

Spizella breweri



The Brewers Sparrow nests in sagebrush habitats across Montana where they forage for insects and seeds to support 3-4 young. During winter, individuals migrate to the southwestern United States and Mexico.

Spizella breweri General Observations Range



Source: Montana Natural Heritage Program

Senate District 18 Libraries and Digital Library Resources

Public



Culbertson Public Library

Beth Hekkel, Branch Librarian
Roosevelt County
PO Box 415 Culbertson, MT 59218
(406) 787-5275
Catalog: <http://mtscprod.msl.mt.gov/uhtbin/cgisirsi/x/0/0/49>
Montana Shared Catalog, OCLC, MyMontanaLibrary2Go, HeritageQuest, Statewide Databases



Daniels County Library

Marlene Machart, Library Director
Daniels County
PO Box 190 Scobey, MT 59263
(406) 487-5502
OCLC, HeritageQuest, Courier Project, Statewide Databases



Dodson Branch Library

Bonnie Marney, Branch Librarian
Phillips County
121 2nd St East Dodson, MT 59524
(406) 284-3341
OCLC, Statewide Databases

Froid Branch Library

Pattie Thompson, Branch Librarian
Roosevelt County
PO Box 188 Froid, MT 59226
(406) 766-2492
Catalog: <http://mtscprod.msl.mt.gov/uhtbin/cgisirsi/x/0/0/49>
Montana Shared Catalog, OCLC, MyMontanaLibrary2Go, HeritageQuest, Statewide Databases



Glasgow City-County Library

Carolyn Wells, Library Director
Valley County
408 Third Avenue South Glasgow, MT 59230
(406) 228-2731
Web Site: <http://www.nemontel.net/~2maizey/>
Catalog: http://www.nemontel.net/~2maizey/Glasgow_Library/Welcome.html
Montana Shared Catalog, OCLC, MyMontanaLibrary2Go, HeritageQuest, Courier Project, Statewide Databases

Opheim Community Library

Terry Risa, Branch Librarian
Valley County
PO Box 108 Opheim, MT 59250
(406) 762-3213
OCLC, Statewide Databases



Phillips County Library

Janeen Brookie, Library Director
Phillips County
PO Box 840 Malta, MT 59538
(406) 654-2407
OCLC, HeritageQuest, Courier Project, Statewide Databases

Poplar City Library

Jackie Hagadone, Branch Librarian
Roosevelt County
PO Box 515 Poplar, MT 59255
(406) 768-3749
Catalog: <http://mtscprod.msl.mt.gov/uhtbin/cgisirsi/x/0/0/49>
Montana Shared Catalog, OCLC, MyMontanaLibrary2Go, HeritageQuest, Statewide Databases



Roosevelt County Library

Andrea Hayes, Library Director
Roosevelt County
220 2nd Ave South Wolf Point, MT 59201
(406) 653-2411
Web Site: rooseveltycountylibrary.org
Catalog: <http://mtscprod.msl.mt.gov/uhtbin/cgisirsi/x/0/0/49>
Montana Shared Catalog, OCLC, MyMontanaLibrary2Go, HeritageQuest, Courier Project, Statewide Databases



Saco Branch Library

Esther Brosseau, Branch Librarian
Phillips County
PO Box 74 Saco, MT 59261
(406) 654-2407
OCLC, Statewide Databases



Sheridan County Library

Sheila Lee, Library Director
Sheridan County
100 West Laurel Ave Plentywood, MT 59254
(406) 765-2317
Montana Shared Catalog, OCLC, MyMontanaLibrary2Go, HeritageQuest, Courier Project, Statewide Databases

Sidney-Richland County Library

Renee Goss, Library Director
Richland County
121 3rd Ave NW Sidney, MT 59270
(406) 433-1917
Web Site: <http://www.richland.org/spl>
Catalog: <http://216.228.51.243#058;7195/webopac/main>
Montana Shared Catalog, OCLC, MyMontanaLibrary2Go, HeritageQuest, Courier Project, Montana Memory Project Participant, Statewide Databases

Academic



Fort Peck Tribal Library

Anita Scheetz, Library Director
Roosevelt County
PO Box 398 Poplar, MT 59255
(406) 768-6340
Web Site: <http://www.fpcc.edu/library.html>
OCLC, Statewide Databases

School

Bainville Public Schools

Stacy Hyatt, Library Director
Roosevelt County
PO Box 177 Bainville, MT 59212
(406) 769-2321
OCLC, Statewide Databases

Brockton Public Schools

Tiffany Anderson, School Librarian
Roosevelt County
PO Box 198 Brockton, MT 59213
(406) 786-3311
OCLC, Statewide Databases

Brorson Elementary

Lisa Fox, Supervising Teacher/Librarian
Richland County
PO Box 145 Sidney, MT 59270
(406) 798-7710
OCLC, Statewide Databases

Culbertson Public School

Jill Herness, School Librarian
Roosevelt County
PO Box 459 Culbertson, MT 59218
(406) 787-6241
OCLC, Statewide Databases

Dodson Public Schools

Richene Bosche, School Librarian
Phillips County
PO Box 278 Dodson, MT 59524
(406) 383-4362
OCLC, Statewide Databases

Fairview Public Schools

AnnDee Taylor, School Librarian
Richland County
PO Box 467 Fairview, MT 59221
(406) 742-5265
Web Site: <http://www.fs.school.org>
OCLC, Statewide Databases

Flaxville Public Schools

Walter Lewis, School Librarian
Daniels County
PO Box 89 Flaxville, MT 59222
(406) 474-2211
OCLC, Statewide Databases

Frazer Public Schools

Melissa Law, School Librarian
Valley County
PO Box 488 Frazer, MT 59225
(406) 695-2241
OCLC, Statewide Databases

Froid School Library

Ellen Britton, School Librarian
Roosevelt County
PO Box 218 Froid, MT 59226
(406) 766-2303
OCLC, Statewide Databases

Frontier Elementary School

Virginia Ulrickson, School Librarian
Roosevelt County
Wolf Point, MT 59201
(406) 653-2501
OCLC, Statewide Databases

Glasgow East Side Library

LeAnne Brandt, School Librarian
Valley County
PO Box 28 Glasgow, MT 59230
(406) 228-8268
OCLC, Statewide Databases

Glasgow High School

Ryan Rebsom, School Librarian
Valley County
PO Box 28 Glasgow, MT 59230
(406) 228-2485
OCLC, Statewide Databases

Hinsdale Public Schools

Brandy Howey, School Librarian
Valley County
PO Box 398 Hinsdale, MT 59241
(406) 364-2314
OCLC, Statewide Databases

Lambert Public Schools

Sheri Moore, School Librarian
Richland County
PO Box 260 Lambert, MT 59243
(406) 774-3333
Web Site: <http://www.midrivers.com/~lhs>
OCLC, Statewide Databases

Landusky School District #7

Joyce Utroske, Supervising Teacher/Librarian
Phillips County
HC 63 Box 5140 Dodson, MT 59524
(406) 673-3238
OCLC, Statewide Databases

Loring Colony School

Lynne Nevriy, Supervising Teacher/Librarian
Phillips County
HC Box 14 Loring, MT 59538
(406) 674-5525
OCLC, Statewide Databases

Lustre Christian High School

Bonnie Unrau, School Librarian
Valley County
HC 66 Box 57 Frazer, MT 59225
(406) 392-5735
OCLC, Statewide Databases

Lustre Elementary

Vernelle Unrau, Supervising Teacher/Librarian
Valley County
HC 66 Box 58 Frazer, MT 59225
(406) 392-5780
OCLC, Statewide Databases

Malta Elementary School

Lynne Nevriy, School Librarian
Phillips County
PO Box 670 Malta, MT 59538
(406) 654-2320
OCLC, Statewide Databases

Malta Jr./Sr. High School

Penny Lind, School Librarian
Phillips County
PO Box 670 Malta, MT 59538
(406) 654-2002
Web Site: <http://www.montanavision.net/~maltahs/>
OCLC, Statewide Databases

Medicine Lake Public Schools

Marial Hovet, Librarian
Sheridan County
PO Box 265 Medicine Lake, MT 59247
(406) 789-2211
OCLC, Statewide Databases

Nashua Public Schools

Ruth Mehl, School Librarian
Valley County
PO Box 170 Nashua, MT 59248
(406) 746-3411
OCLC, Statewide Databases

Northside School Library

Virginia Ulrickson, School Librarian
Roosevelt County
710 Fourth Avenue North Wolf Point, MT 59201
(406) 653-1653
OCLC, Statewide Databases

Opheim Public Schools

Terry Risa, School Librarian
Valley County
PO Box 108 Opheim, MT 59250
(406) 762-3213
OCLC, Statewide Databases

Outlook Public Schools

Walter Lewis, School Librarian
Sheridan County
PO Box 296 Outlook, MT 59252
(406) 895-2465
OCLC, Statewide Databases

Peerless Public Schools

Judy Kjos, School Librarian
Daniels County
PO Box 475 Peerless, MT 59253
(406) 893-4377
OCLC, Statewide Databases

Plentywood Public Schools

Carol O'Toole, School Librarian
Sheridan County
100 E Laurel Ave Plentywood, MT 59254
(406) 765-1803
OCLC, Statewide Databases

Poplar High School Library

Diane Elliott, School Librarian
Roosevelt County
PO Box 458 Poplar, MT 59255
(406) 768-6830
OCLC, Statewide Databases

Poplar Public Schools

Goss Janet, Librarian
Roosevelt County
PO Box 458 Poplar, MT 59255
(406) 768-6730
OCLC, Statewide Databases

R L Irlle Elementary School

LeAnne Brandt, School Librarian
Valley County
825 8th Ave N Glasgow, MT 59230
(406) 228-2419
OCLC, Statewide Databases

Rau Elementary School

Carolyn Koch, School Librarian
 Richland County
 HC 57 Box 4030 Sidney, MT 59270
 (406) 482-6032
OCLC, Statewide Databases

Saco Public Schools

Anita Freeman, School Librarian
 Phillips County
 PO Box 298 Saco, MT 59261
 (406) 527-3531
OCLC, Statewide Databases

Savage Public Schools

Charlene Jonsson, School Librarian
 Richland County
 PO Box 110 Savage, MT 59262
 (406) 776-2317
OCLC, Statewide Databases

Scobey Public Schools

Cecilia Raaum, Librarian
 Daniels County
 PO Box 10 Scobey, MT 59263
 (406) 487-2202
OCLC, Statewide Databases

Sidney Elementary School Library

Dawn Greenwood, School Librarian
 Richland County
 Sidney, MT 59270
 (406) 433-5501
 Web Site: <http://www.sidneyps.com/ws/personnel/dgreenwood/index.html>
OCLC, Statewide Databases

Sidney High School Library

Lynn Donovan, School Librarian
 Richland County
 1012 4th Ave SE Sidney, MT 59270
 (406) 433-2330
 Web Site: <http://sidney.k12.mt.us/214010112310292263/site/default.asp>
 Catalog: <https://sidney.follettdestiny.com/>
OCLC, Statewide Databases

Sidney Middle School Library

Cindy Wagner, School Librarian
 Richland County
 415 South Central Avenue Sidney, MT 59270
 (406) 482-4050
 Web Site: <http://www.sidneyps.com/ms/msfcscw/library/index.html>
 Catalog: <http://www.sidneyps.com/ms/msfcscw/library/page2.html>
OCLC, Statewide Databases

Southside Elementary Schools Library

Kathy Dunne, School Librarian
 Roosevelt County
 415 4th Avenue South Wolf Point, MT 59201
 (406) 653-1480
OCLC, Statewide Databases

Tallow Creek School Library

Jenny Crowder, Supervising Teacher/Librarian
 Phillips County
 HC 84 Box 8075 Malta, MT 59538
 (406) 658-2643
OCLC, Statewide Databases

West Side Elementary Library

Dawn Greenwood, School Librarian
 Richland County
 1100 Fifth St SW Sidney, MT 59270
 (406) 433-2530
Statewide Databases

Westby Public School Library

Gayle Overgaard, School Librarian
 Sheridan County
 PO Box 109 Westby, MT 59275
 (406) 385-2225
OCLC, Statewide Databases

Whitewater Public Schools Library

Heidi Cummings, School Librarian
 Phillips County
 PO Box 46 Whitewater, MT 59544
 (406) 674-5417
OCLC, Statewide Databases

Wolf Point Jr/Sr High Library

Dorlis Ebner, School Librarian
 Roosevelt County
 213 6th Ave S Wolf Point, MT 59201
 (406) 653-1200
OCLC, Statewide Databases

Zortman Grade School Library

Jeanne Engebretson, Supervising Teacher/
 Librarian
 Phillips County
 PO Box 301 Zortman, MT 59538
 (406) 673-3386
OCLC, Statewide Databases

Special**Lillian Anderson Jensen Memorial Library**

Sandy Turner, Administrative Coordinator
 Richland County
 120 3rd Ave SE Sidney, MT 59270
 (406) 433-3500
OCLC, Statewide Databases

State of Montana Index

	Montana	United States	Rank in US
Geography			
Population per square mile 2000	6.2	79.6	49
Households 2000 (complete count)	358,667	105,480,101	44
Persons per household 2000 (complete count)	2.5	2.6	46
Resident Population			
Estimate (July 1) 2009	974,989	307,006,550	44
Estimate, percent change - April 1, 2000 to July 1, 2009	8.1	9.1	21
Total population estimate, net change - April 1, 2000 to July 1, 2009	72,799	25,581,948	40
April 1, 2000 (complete count)	902,195	281,421,906	44
Under 5 years (July 1 - estimate) 2009	62,438	21,299,656	43
Under 5 years, percent (July 1 - estimate) 2009	6.4	6.9	39
Under 18 years (July 1 - estimate) 2009	219,828	74,548,215	44
Under 18 years, percent (July 1 - estimate) 2009	22.5	24.3	40
65 years and over (July 1 - estimate) 2009	141,903	39,570,590	44
65 years and over, percent (July 1 - estimate) 2009	14.6	12.9	7
Total females, percent (July 1 - estimate) 2009	50.0	50.7	40
White alone (July 1 - estimate) 2009	880,107	244,298,393	43
Black alone (July 1 - estimate) 2009	7,282	39,641,060	50
American Indian and Alaska Native alone (July 1 - estimate) 2009	62,873	3,151,284	13
Asian alone (July 1 - estimate) 2009	6,810	14,013,954	49
Native Hawaiian and Other Pacific Islander alone (July 1 - estimate) 2009	707	578,353	42
Population 5 years and over, percent speaking language other than English at home, 2000	5.2	17.9	44
Civilian noninstitutionalized population, 5 years and over, with a disability 2000	145,732	49,746,248	44
Vital Statistics			
Births 2006	12,508	4,265,555	43
Deaths 2006	8,472	2,426,264	44
Infant deaths under one year 2006	73	28,527	48
Population 5 years and over by residence in 1995 - percent in same house, 2000 (sample)	53.6	54.1	32
Percent foreign born population 2000 (sample)	1.8	11.1	49
Education			
Educational attainment - persons 25 years and over - percent high school graduate or higher 2000	87.2	80.4	6
Educational attainment - persons 25 years and over - percent bachelors degree or higher 2000	24.4	24.4	22
Income/Poverty			
Per capita income in 1999	17,151	21,587	47
Median household income 2008	43,948	52,029	42
People of all ages in poverty - percent 2008	14	13	17
Personal income 2007	31,783	11,634,322	46
Per capita personal income 2007	33,225	38,615	40
Federal			
Federal Government expenditure - total FY 2008	8,842,960	2,771,782,152	46
Federal Government expenditure per capita FY 2008	9,141	9,116	22
Housing			
Housing unit estimates as of July 1, 2009	441,279	129,925,421	44
Housing unit estimates - net change, April 1, 2000 (base) to July 1, 2009	28,648	14,020,948	45
Housing unit estimates - percent change, April 1, 2000 (base) to July 1, 2009	6.9	12.1	40
Owner-occupied housing units - percent of total occupied housing units 2000 (complete count)	69.1	66.2	25
Median value of specified owner-occupied housing units 2000 (sample)	99,500	119,600	31
Housing units by units in structure - multiple units 2000 (sample)	15.7	26.4	43
New private housing units authorized by building permits - total 2009 (20,000-place universe)	1,686	582,963	47
Valuation of new private housing units authorized by building permits 2009 (20,000-place universe)	253,576	95,410,469	47
Employment/Business			
Civilian labor force 2009	498,907	154,142,000	44
Civilian labor force unemployment 2009	30,862	14,265,000	46
Civilian labor force unemployment rate 2009	6.2	9.3	47
Employment in all industries (NAICS, no code) 2007	647,427	180,943,800	44
Employment in all industries, net change 2000 - 2007	88,372	14,185,000	34
Employment in government (NAICS 92) 2007	93,107	24,257,000	45
Earnings in all industries (NAICS, no code) 2007	22,293,038	8,848,240,000	47
Earnings in all industries (NAICS, no code), average earnings per job 2007	34,433	48,900	51
Average travel time to work for workers 16 years and over not working at home 2000 (in minutes)	18	26	49
Private nonfarm establishments 2007	37,755	7,705,018	42
Private nonfarm employment for pay period including March 12, 2007	37,755	7,705,018	42
Private nonfarm employment for pay period including March 12, 2007, percent change 2000-2007	353,807.0	120,604,265.0	46
Nonemployer: total (NAICS 00) - establishments, 2007	83,999	21,708,021	43
Accommodation and Food Services: total (NAICS 72) - sales of establishments with payroll 2002	1,537,986	449,498,718	45
Total number of firms 2002	100,402	22,974,655	42
Manufacturing: total (NAICS 31-33) - value of shipments 2002	4,987,577	3,916,136,712	47
Wholesale trade: total (NAICS 42) - sales of establishments with payroll 2002	7,223,420	4,634,755,112	47
Retail trade: total (NAICS 44-45) - sales of establishments with payroll 2002	10,122,625	3,056,421,997	45
Retail trade: total (NAICS 44-45) - sales of establishments with payroll per capita 2002	11,116	10,615	17
Land in farms (NAICS) 2007 (acres) (adjusted)	61,388,462	922,095,840	2

Source: U.S. Census Bureau

Daniels County Index

	County	Montana	Rank in MT
Geography			
Population per square mile 2000	1.4	6.2	44
Households 2000 (complete count)	892	358,667	44
Persons per household 2000 (complete count)	2.2	2.5	55
Resident Population			
Estimate (July 1) 2009	1,703	974,989	47
Estimate, percent change - April 1, 2000 to July 1, 2009	-15.6	8.1	51
Total population estimate, net change - April 1, 2000 to July 1, 2009	-314	72,799	40
April 1, 2000 (complete count)	2,017	902,195	46
Under 5 years (July 1 - estimate) 2009	72	62,438	49
Under 5 years, percent (July 1 - estimate) 2009	4.2	6.4	46
Under 18 years (July 1 - estimate) 2009	333	219,828	48
Under 18 years, percent (July 1 - estimate) 2009	19.6	22.5	44
65 years and over (July 1 - estimate) 2009	428	141,903	44
65 years and over, percent (July 1 - estimate) 2009	25.1	14.6	3
Total females, percent (July 1 - estimate) 2009	52.0	50.0	2
White alone (July 1 - estimate) 2009	1,608	880,107	48
Black alone (July 1 - estimate) 2009	3	7,282	44
American Indian and Alaska Native alone (July 1 - estimate) 2009	27	62,873	44
Asian alone (July 1 - estimate) 2009	31	6,810	23
Native Hawaiian and Other Pacific Islander alone (July 1 - estimate) 2009	2	707	23
Population 5 years and over, percent speaking language other than English at home, 2000	3	5	44
Civilian noninstitutionalized population, 5 years and over, with a disability 2000	318	145,732	46
Vital Statistics			
Births 2006	9	12,508	51
Deaths 2006	15	8,472	50
Infant deaths under one year 2006	0	73	50
Population 5 years and over by residence in 1995 - percent in same house, 2000 (sample)	69.2	53.6	7
Percent foreign born population 2000 (sample)	4.7	1.8	1
Education			
Educational attainment - persons 25 years and over - percent high school graduate or higher 2000	85.3	87.2	23
Educational attainment - persons 25 years and over - percent bachelors degree or higher 2000	14.1	24.4	51
Income/Poverty			
Per capita income in 1999	16,055	17,151	19
Median household income 2008	34,239	43,948	45
People of all ages in poverty - percent 2008	12	14	40
Personal income 2007	59	31,783	44
Per capita personal income 2007	36,106	33,225	5
Federal			
Federal Government expenditure - total FY 2008	38,390	8,842,960	31
Federal Government expenditure per capita FY 2008	23,366	9,141	2
Housing			
Housing unit estimates as of July 1, 2009	1,145	441,279	45
Housing unit estimates - net change, April 1, 2000 (base) to July 1, 2009	-10	28,648	44
Housing unit estimates - percent change, April 1, 2000 (base) to July 1, 2009	-0.9	6.9	50
Owner-occupied housing units - percent of total occupied housing units 2000 (complete count)	78.4	69.1	4
Median value of specified owner-occupied housing units 2000 (sample)	45,100	99,500	50
Housing units by units in structure - multiple units 2000 (sample)	6.3	15.7	36
New private housing units authorized by building permits - total 2009 (20,000-place universe)	2	1,686	24
Valuation of new private housing units authorized by building permits 2009 (20,000-place universe)	425	253,576	23
Employment/Business			
Civilian labor force 2009	785	498,907	48
Civilian labor force unemployment 2009	29	30,862	48
Civilian labor force unemployment rate 2009	3.7	6.2	52
Employment in all industries (NAICS, no code) 2007	1,458	647,427	43
Employment in all industries, net change 2000 - 2007	-231	88,372	56
Employment in government (NAICS 92) 2007	160	93,107	49
Earnings in all industries (NAICS, no code) 2007	35,724	22,293,038	43
Earnings in all industries (NAICS, no code), average earnings per job 2007	24,502	34,433	39
Average travel time to work for workers 16 years and over not working at home 2000 (in minutes)	12.5	17.7	53
Private nonfarm establishments 2007	72	37,755	43
Private nonfarm employment for pay period including March 12, 2007	72	37,755	43
Private nonfarm employment for pay period including March 12, 2007, percent change 2000-2007	600.0	353,807.0	42
Nonemployer: total (NAICS 00) - establishments, 2007	146	83,999	48
Accommodation and Food Services: total (NAICS 72) - sales of establishments with payroll 2002	833	1,537,986	47
Total number of firms 2002	209	100,402	45
Manufacturing: total (NAICS 31-33) - value of shipments 2002	0	4,987,577	45
Wholesale trade: total (NAICS 42) - sales of establishments with payroll 2002	6,477	7,223,420	35
Retail trade: total (NAICS 44-45) - sales of establishments with payroll 2002	20,009	10,122,625	40
Retail trade: total (NAICS 44-45) - sales of establishments with payroll per capita 2002	10,335	11,116	11
Land in farms (NAICS) 2007 (acres) (adjusted)	860,238	61,388,462	30

Source: U.S. Census Bureau

Phillips County Index

	County	Montana	Rank in MT
Geography			
Population per square mile 2000	0.9	6.2	48
Households 2000 (complete count)	1,848	358,667	36
Persons per household 2000 (complete count)	2.5	2.5	22
Resident Population			
Estimate (July 1) 2009	3,944	974,989	37
Estimate, percent change - April 1, 2000 to July 1, 2009	-14.3	8.1	50
Total population estimate, net change - April 1, 2000 to July 1, 2009	-657	72,799	51
April 1, 2000 (complete count)	4,601	902,195	35
Under 5 years (July 1 - estimate) 2009	212	62,438	39
Under 5 years, percent (July 1 - estimate) 2009	5.4	6.4	28
Under 18 years (July 1 - estimate) 2009	887	219,828	37
Under 18 years, percent (July 1 - estimate) 2009	22.5	22.5	24
65 years and over (July 1 - estimate) 2009	856	141,903	36
65 years and over, percent (July 1 - estimate) 2009	21.7	14.6	8
Total females, percent (July 1 - estimate) 2009	49.7	50.0	36
White alone (July 1 - estimate) 2009	3,411	880,107	38
Black alone (July 1 - estimate) 2009	7	7,282	35
American Indian and Alaska Native alone (July 1 - estimate) 2009	400	62,873	19
Asian alone (July 1 - estimate) 2009	14	6,810	37
Native Hawaiian and Other Pacific Islander alone (July 1 - estimate) 2009	1	707	36
Population 5 years and over, percent speaking language other than English at home, 2000	4	5	32
Civilian noninstitutionalized population, 5 years and over, with a disability 2000	830	145,732	35
Vital Statistics			
Births 2006	41	12,508	38
Deaths 2006	42	8,472	40
Infant deaths under one year 2006	0	73	41
Population 5 years and over by residence in 1995 - percent in same house, 2000 (sample)	64.8	53.6	20
Percent foreign born population 2000 (sample)	1.0	1.8	46
Education			
Educational attainment - persons 25 years and over - percent high school graduate or higher 2000	82.4	87.2	41
Educational attainment - persons 25 years and over - percent bachelors degree or higher 2000	17.1	24.4	33
Income/Poverty			
Per capita income in 1999	15,058	17,151	34
Median household income 2008	35,229	43,948	42
People of all ages in poverty - percent 2008	16	14	23
Personal income 2007	106	31,783	39
Per capita personal income 2007	26,876	33,225	41
Federal			
Federal Government expenditure - total FY 2008	59,007	8,842,960	20
Federal Government expenditure per capita FY 2008	15,114	9,141	10
Housing			
Housing unit estimates as of July 1, 2009	2,488	441,279	34
Housing unit estimates - net change, April 1, 2000 (base) to July 1, 2009	-14	28,648	49
Housing unit estimates - percent change, April 1, 2000 (base) to July 1, 2009	-0.6	6.9	45
Owner-occupied housing units - percent of total occupied housing units 2000 (complete count)	70.6	69.1	38
Median value of specified owner-occupied housing units 2000 (sample)	60,700	99,500	37
Housing units by units in structure - multiple units 2000 (sample)	10.0	15.7	25
New private housing units authorized by building permits - total 2009 (20,000-place universe)	5	1,686	16
Valuation of new private housing units authorized by building permits 2009 (20,000-place universe)	585	253,576	18
Employment/Business			
Civilian labor force 2009	2,212	498,907	38
Civilian labor force unemployment 2009	114	30,862	37
Civilian labor force unemployment rate 2009	5.2	6.2	25
Employment in all industries (NAICS, no code) 2007	2,687	647,427	36
Employment in all industries, net change 2000 - 2007	-87	88,372	54
Employment in government (NAICS 92) 2007	430	93,107	34
Earnings in all industries (NAICS, no code) 2007	60,955	22,293,038	38
Earnings in all industries (NAICS, no code), average earnings per job 2007	22,685	34,433	45
Average travel time to work for workers 16 years and over not working at home 2000 (in minutes)	14.3	17.7	43
Private nonfarm establishments 2007	146	37,755	37
Private nonfarm employment for pay period including March 12, 2007	146	37,755	37
Private nonfarm employment for pay period including March 12, 2007, percent change 2000-2007	829.0	353,807.0	38
Nonemployer: total (NAICS 00) - establishments, 2007	353	83,999	39
Accommodation and Food Services: total (NAICS 72) - sales of establishments with payroll 2002	3,358	1,537,986	35
Total number of firms 2002	469	100,402	36
Manufacturing: total (NAICS 31-33) - value of shipments 2002	0	4,987,577	13
Wholesale trade: total (NAICS 42) - sales of establishments with payroll 2002	43,716	7,223,420	16
Retail trade: total (NAICS 44-45) - sales of establishments with payroll 2002	30,522	10,122,625	33
Retail trade: total (NAICS 44-45) - sales of establishments with payroll per capita 2002	7,007	11,116	22
Land in farms (NAICS) 2007 (acres) (adjusted)	2,006,068	61,388,462	9

Source: U.S. Census Bureau

Richland County Index

	County	Montana	Rank in MT
Geography			
Population per square mile 2000	4.6	6.2	16
Households 2000 (complete count)	3,878	358,667	20
Persons per household 2000 (complete count)	2.5	2.5	21
Resident Population			
Estimate (July 1) 2009	9,313	974,989	21
Estimate, percent change - April 1, 2000 to July 1, 2009	-3.7	8.1	31
Total population estimate, net change - April 1, 2000 to July 1, 2009	-354	72,799	43
April 1, 2000 (complete count)	9,667	902,195	20
Under 5 years (July 1 - estimate) 2009	578	62,438	20
Under 5 years, percent (July 1 - estimate) 2009	6.2	6.4	19
Under 18 years (July 1 - estimate) 2009	2,240	219,828	20
Under 18 years, percent (July 1 - estimate) 2009	24.1	22.5	11
65 years and over (July 1 - estimate) 2009	1,444	141,903	23
65 years and over, percent (July 1 - estimate) 2009	15.5	14.6	41
Total females, percent (July 1 - estimate) 2009	50.1	50.0	29
White alone (July 1 - estimate) 2009	8,959	880,107	18
Black alone (July 1 - estimate) 2009	10	7,282	33
American Indian and Alaska Native alone (July 1 - estimate) 2009	231	62,873	24
Asian alone (July 1 - estimate) 2009	18	6,810	34
Native Hawaiian and Other Pacific Islander alone (July 1 - estimate) 2009	1	707	34
Population 5 years and over, percent speaking language other than English at home, 2000	3	5	50
Civilian noninstitutionalized population, 5 years and over, with a disability 2000	1,484	145,732	21
Vital Statistics			
Births 2006	100	12,508	24
Deaths 2006	96	8,472	20
Infant deaths under one year 2006	1	73	19
Population 5 years and over by residence in 1995 - percent in same house, 2000 (sample)	64.5	53.6	22
Percent foreign born population 2000 (sample)	1.4	1.8	33
Education			
Educational attainment - persons 25 years and over - percent high school graduate or higher 2000	83.5	87.2	32
Educational attainment - persons 25 years and over - percent bachelors degree or higher 2000	17.2	24.4	32
Income/Poverty			
Per capita income in 1999	16,006	17,151	22
Median household income 2008	49,838	43,948	5
People of all ages in poverty - percent 2008	11	14	49
Personal income 2007	339	31,783	17
Per capita personal income 2007	36,960	33,225	2
Federal			
Federal Government expenditure - total FY 2008	79,946	8,842,960	9
Federal Government expenditure per capita FY 2008	8,624	9,141	39
Housing			
Housing unit estimates as of July 1, 2009	4,624	441,279	23
Housing unit estimates - net change, April 1, 2000 (base) to July 1, 2009	67	28,648	16
Housing unit estimates - percent change, April 1, 2000 (base) to July 1, 2009	1.5	6.9	16
Owner-occupied housing units - percent of total occupied housing units 2000 (complete count)	72.4	69.1	32
Median value of specified owner-occupied housing units 2000 (sample)	61,000	99,500	34
Housing units by units in structure - multiple units 2000 (sample)	16.1	15.7	10
New private housing units authorized by building permits - total 2009 (20,000-place universe)	1	1,686	28
Valuation of new private housing units authorized by building permits 2009 (20,000-place universe)	350	253,576	24
Employment/Business			
Civilian labor force 2009	5,491	498,907	17
Civilian labor force unemployment 2009	231	30,862	25
Civilian labor force unemployment rate 2009	4.2	6.2	42
Employment in all industries (NAICS, no code) 2007	7,503	647,427	14
Employment in all industries, net change 2000 - 2007	1,297	88,372	11
Employment in government (NAICS 92) 2007	733	93,107	27
Earnings in all industries (NAICS, no code) 2007	264,677	22,293,038	12
Earnings in all industries (NAICS, no code), average earnings per job 2007	35,276	34,433	11
Average travel time to work for workers 16 years and over not working at home 2000 (in minutes)	13.5	17.7	46
Private nonfarm establishments 2007	446	37,755	14
Private nonfarm employment for pay period including March 12, 2007	446	37,755	14
Private nonfarm employment for pay period including March 12, 2007, percent change 2000-2007	4,327.0	353,807.0	12
Nonemployer: total (NAICS 00) - establishments, 2007	776	83,999	20
Accommodation and Food Services: total (NAICS 72) - sales of establishments with payroll 2002	11,631	1,537,986	20
Total number of firms 2002	1,042	100,402	20
Manufacturing: total (NAICS 31-33) - value of shipments 2002	0	4,987,577	24
Wholesale trade: total (NAICS 42) - sales of establishments with payroll 2002	252,710	7,223,420	7
Retail trade: total (NAICS 44-45) - sales of establishments with payroll 2002	104,540	10,122,625	14
Retail trade: total (NAICS 44-45) - sales of establishments with payroll per capita 2002	11,270	11,116	9
Land in farms (NAICS) 2007 (acres) (adjusted)	1,279,300	61,388,462	19

Source: U.S. Census Bureau

Roosevelt County Index

	County	Montana	Rank in MT
Geography			
Population per square mile 2000	4.5	6.2	18
Households 2000 (complete count)	3,581	358,667	24
Persons per household 2000 (complete count)	2.9	2.5	3
Resident Population			
Estimate (July 1) 2009	10,303	974,989	19
Estimate, percent change - April 1, 2000 to July 1, 2009	-3.0	8.1	30
Total population estimate, net change - April 1, 2000 to July 1, 2009	-317	72,799	41
April 1, 2000 (complete count)	10,620	902,195	17
Under 5 years (July 1 - estimate) 2009	1,060	62,438	13
Under 5 years, percent (July 1 - estimate) 2009	10.3	6.4	1
Under 18 years (July 1 - estimate) 2009	3,341	219,828	14
Under 18 years, percent (July 1 - estimate) 2009	32.4	22.5	2
65 years and over (July 1 - estimate) 2009	1,111	141,903	28
65 years and over, percent (July 1 - estimate) 2009	10.8	14.6	53
Total females, percent (July 1 - estimate) 2009	50.9	50.0	7
White alone (July 1 - estimate) 2009	3,766	880,107	35
Black alone (July 1 - estimate) 2009	42	7,282	17
American Indian and Alaska Native alone (July 1 - estimate) 2009	6,148	62,873	4
Asian alone (July 1 - estimate) 2009	62	6,810	15
Native Hawaiian and Other Pacific Islander alone (July 1 - estimate) 2009	4	707	18
Population 5 years and over, percent speaking language other than English at home, 2000	7	5	13
Civilian noninstitutionalized population, 5 years and over, with a disability 2000	1,596	145,732	19
Vital Statistics			
Births 2006	238	12,508	13
Deaths 2006	118	8,472	17
Infant deaths under one year 2006	3	73	9
Population 5 years and over by residence in 1995 - percent in same house, 2000 (sample)	68.8	53.6	9
Percent foreign born population 2000 (sample)	0.9	1.8	50
Education			
Educational attainment - persons 25 years and over - percent high school graduate or higher 2000	80.6	87.2	47
Educational attainment - persons 25 years and over - percent bachelors degree or higher 2000	15.6	24.4	43
Income/Poverty			
Per capita income in 1999	11,347	17,151	55
Median household income 2008	32,671	43,948	51
People of all ages in poverty - percent 2008	26	14	1
Personal income 2007	238	31,783	27
Per capita personal income 2007	23,506	33,225	51
Federal			
Federal Government expenditure - total FY 2008	131,008	8,842,960	50
Federal Government expenditure per capita FY 2008	12,985	9,141	17
Housing			
Housing unit estimates as of July 1, 2009	4,035	441,279	26
Housing unit estimates - net change, April 1, 2000 (base) to July 1, 2009	-9	28,648	42
Housing unit estimates - percent change, April 1, 2000 (base) to July 1, 2009	-0.2	6.9	33
Owner-occupied housing units - percent of total occupied housing units 2000 (complete count)	65.1	69.1	48
Median value of specified owner-occupied housing units 2000 (sample)	47,400	99,500	48
Housing units by units in structure - multiple units 2000 (sample)	8.1	15.7	28
New private housing units authorized by building permits - total 2009 (20,000-place universe)	7	1,686	12
Valuation of new private housing units authorized by building permits 2009 (20,000-place universe)	1,243	253,576	12
Employment/Business			
Civilian labor force 2009	3,939	498,907	26
Civilian labor force unemployment 2009	278	30,862	18
Civilian labor force unemployment rate 2009	7.1	6.2	13
Employment in all industries (NAICS, no code) 2007	5,310	647,427	26
Employment in all industries, net change 2000 - 2007	-5	88,372	51
Employment in government (NAICS 92) 2007	1,846	93,107	13
Earnings in all industries (NAICS, no code) 2007	157,402	22,293,038	24
Earnings in all industries (NAICS, no code), average earnings per job 2007	29,643	34,433	20
Average travel time to work for workers 16 years and over not working at home 2000 (in minutes)	11.7	17.7	55
Private nonfarm establishments 2007	203	37,755	29
Private nonfarm employment for pay period including March 12, 2007	203	37,755	29
Private nonfarm employment for pay period including March 12, 2007, percent change 2000-2007	1,635.0	353,807.0	27
Nonemployer: total (NAICS 00) - establishments, 2007	490	83,999	29
Accommodation and Food Services: total (NAICS 72) - sales of establishments with payroll 2002	7,563	1,537,986	29
Total number of firms 2002	698	100,402	27
Manufacturing: total (NAICS 31-33) - value of shipments 2002	0	4,987,577	32
Wholesale trade: total (NAICS 42) - sales of establishments with payroll 2002	55,299	7,223,420	15
Retail trade: total (NAICS 44-45) - sales of establishments with payroll 2002	83,386	10,122,625	17
Retail trade: total (NAICS 44-45) - sales of establishments with payroll per capita 2002	7,990	11,116	18
Land in farms (NAICS) 2007 (acres) (adjusted)	1,451,828	61,388,462	16

Source: U.S. Census Bureau

Sheridan County Index

	County	Montana	Rank in MT
Geography			
Population per square mile 2000	2.4	6.2	32
Households 2000 (complete count)	1,741	358,667	38
Persons per household 2000 (complete count)	2.3	2.5	51
Resident Population			
Estimate (July 1) 2009	3,243	974,989	40
Estimate, percent change - April 1, 2000 to July 1, 2009	-21.0	8.1	55
Total population estimate, net change - April 1, 2000 to July 1, 2009	-862	72,799	54
April 1, 2000 (complete count)	4,105	902,195	38
Under 5 years (July 1 - estimate) 2009	133	62,438	42
Under 5 years, percent (July 1 - estimate) 2009	4.1	6.4	48
Under 18 years (July 1 - estimate) 2009	586	219,828	41
Under 18 years, percent (July 1 - estimate) 2009	18.1	22.5	49
65 years and over (July 1 - estimate) 2009	836	141,903	37
65 years and over, percent (July 1 - estimate) 2009	25.8	14.6	1
Total females, percent (July 1 - estimate) 2009	50.5	50.0	17
White alone (July 1 - estimate) 2009	3,114	880,107	40
Black alone (July 1 - estimate) 2009	4	7,282	41
American Indian and Alaska Native alone (July 1 - estimate) 2009	60	62,873	38
Asian alone (July 1 - estimate) 2009	14	6,810	38
Native Hawaiian and Other Pacific Islander alone (July 1 - estimate) 2009	1	707	37
Population 5 years and over, percent speaking language other than English at home, 2000	3	5	42
Civilian noninstitutionalized population, 5 years and over, with a disability 2000	628	145,732	39
Vital Statistics			
Births 2006	24	12,508	43
Deaths 2006	69	8,472	29
Infant deaths under one year 2006	0	73	38
Population 5 years and over by residence in 1995 - percent in same house, 2000 (sample)	72.6	53.6	3
Percent foreign born population 2000 (sample)	1.9	1.8	14
Education			
Educational attainment - persons 25 years and over - percent high school graduate or higher 2000	81.2	87.2	45
Educational attainment - persons 25 years and over - percent bachelors degree or higher 2000	18.4	24.4	25
Income/Poverty			
Per capita income in 1999	16,038	17,151	20
Median household income 2008	40,127	43,948	19
People of all ages in poverty - percent 2008	13	14	39
Personal income 2007	107	31,783	38
Per capita personal income 2007	31,783	33,225	22
Federal			
Federal Government expenditure - total FY 2008	56,760	8,842,960	22
Federal Government expenditure per capita FY 2008	17,289	9,141	5
Housing			
Housing unit estimates as of July 1, 2009	2,143	441,279	37
Housing unit estimates - net change, April 1, 2000 (base) to July 1, 2009	-24	28,648	54
Housing unit estimates - percent change, April 1, 2000 (base) to July 1, 2009	-1.1	6.9	56
Owner-occupied housing units - percent of total occupied housing units 2000 (complete count)	80.2	69.1	2
Median value of specified owner-occupied housing units 2000 (sample)	45,800	99,500	49
Housing units by units in structure - multiple units 2000 (sample)	9.3	15.7	26
New private housing units authorized by building permits - total 2009 (20,000-place universe)	1	1,686	30
Valuation of new private housing units authorized by building permits 2009 (20,000-place universe)	229	253,576	25
Employment/Business			
Civilian labor force 2009	1,779	498,907	41
Civilian labor force unemployment 2009	72	30,862	41
Civilian labor force unemployment rate 2009	4.0	6.2	46
Employment in all industries (NAICS, no code) 2007	2,536	647,427	37
Employment in all industries, net change 2000 - 2007	71	88,372	36
Employment in government (NAICS 92) 2007	376	93,107	37
Earnings in all industries (NAICS, no code) 2007	58,952	22,293,038	39
Earnings in all industries (NAICS, no code), average earnings per job 2007	23,246	34,433	41
Average travel time to work for workers 16 years and over not working at home 2000 (in minutes)	12.8	17.7	50
Private nonfarm establishments 2007	146	37,755	36
Private nonfarm employment for pay period including March 12, 2007	146	37,755	36
Private nonfarm employment for pay period including March 12, 2007, percent change 2000-2007	843.0	353,807.0	37
Nonemployer: total (NAICS 00) - establishments, 2007	295	83,999	42
Accommodation and Food Services: total (NAICS 72) - sales of establishments with payroll 2002	3,706	1,537,986	33
Total number of firms 2002	457	100,402	39
Manufacturing: total (NAICS 31-33) - value of shipments 2002	0	4,987,577	39
Wholesale trade: total (NAICS 42) - sales of establishments with payroll 2002	22,735	7,223,420	24
Retail trade: total (NAICS 44-45) - sales of establishments with payroll 2002	26,233	10,122,625	35
Retail trade: total (NAICS 44-45) - sales of establishments with payroll per capita 2002	6,891	11,116	24
Land in farms (NAICS) 2007 (acres) (adjusted)	1,065,503	61,388,462	24

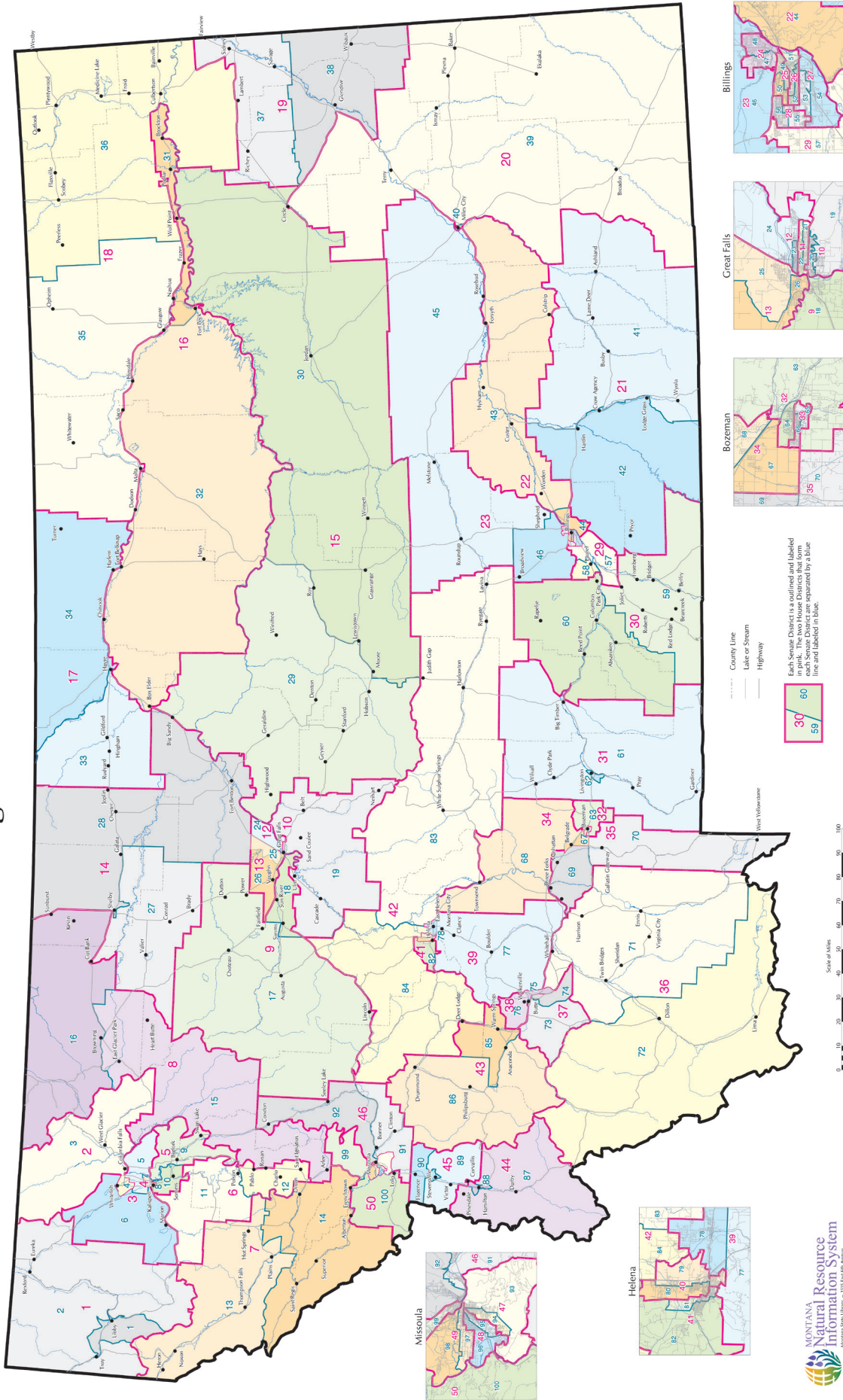
Source: U.S. Census Bureau

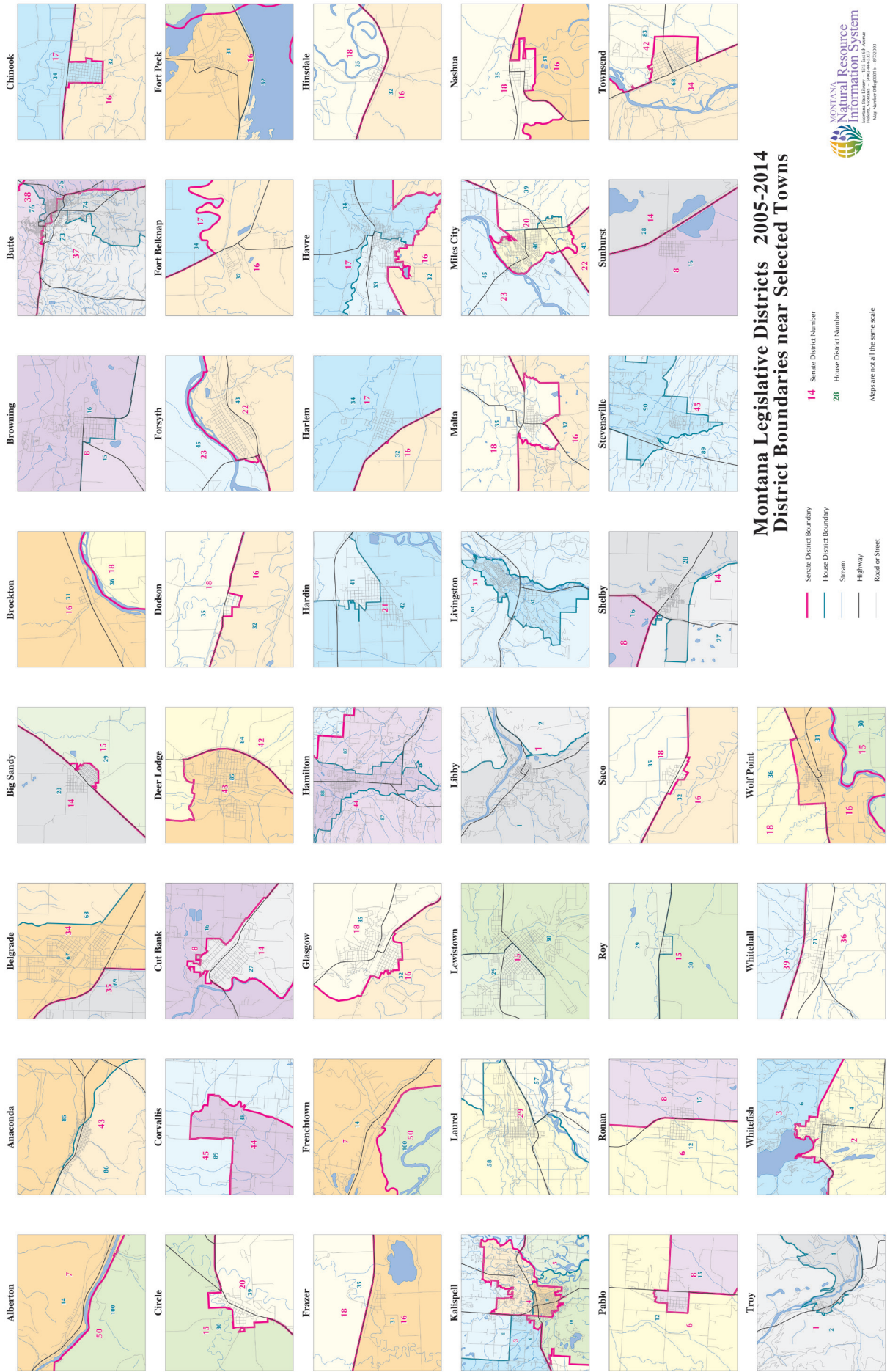
Valley County Index

	County	Montana	Rank in MT
Geography			
Population per square mile 2000	1.6	6.2	39
Households 2000 (complete count)	3,150	358,667	27
Persons per household 2000 (complete count)	2.4	2.5	37
Resident Population			
Estimate (July 1) 2009	6,771	974,989	29
Estimate, percent change - April 1, 2000 to July 1, 2009	-11.8	8.1	47
Total population estimate, net change - April 1, 2000 to July 1, 2009	-904	72,799	55
April 1, 2000 (complete count)	7,675	902,195	27
Under 5 years (July 1 - estimate) 2009	378	62,438	29
Under 5 years, percent (July 1 - estimate) 2009	5.6	6.4	25
Under 18 years (July 1 - estimate) 2009	1,565	219,828	28
Under 18 years, percent (July 1 - estimate) 2009	23.1	22.5	19
65 years and over (July 1 - estimate) 2009	1,447	141,903	22
65 years and over, percent (July 1 - estimate) 2009	21.4	14.6	10
Total females, percent (July 1 - estimate) 2009	50.5	50.0	15
White alone (July 1 - estimate) 2009	5,805	880,107	26
Black alone (July 1 - estimate) 2009	12	7,282	30
American Indian and Alaska Native alone (July 1 - estimate) 2009	776	62,873	16
Asian alone (July 1 - estimate) 2009	19	6,810	30
Native Hawaiian and Other Pacific Islander alone (July 1 - estimate) 2009	1	707	32
Population 5 years and over, percent speaking language other than English at home, 2000	3	5	43
Civilian noninstitutionalized population, 5 years and over, with a disability 2000	1,371	145,732	27
Vital Statistics			
Births 2006	82	12,508	27
Deaths 2006	92	8,472	22
Infant deaths under one year 2006	0	73	34
Population 5 years and over by residence in 1995 - percent in same house, 2000 (sample)	69.7	53.6	6
Percent foreign born population 2000 (sample)	1.1	1.8	40
Education			
Educational attainment - persons 25 years and over - percent high school graduate or higher 2000	83.9	87.2	31
Educational attainment - persons 25 years and over - percent bachelors degree or higher 2000	15.7	24.4	42
Income/Poverty			
Per capita income in 1999	16,246	17,151	16
Median household income 2008	39,344	43,948	25
People of all ages in poverty - percent 2008	15	14	29
Personal income 2007	217	31,783	28
Per capita personal income 2007	31,556	33,225	23
Federal			
Federal Government expenditure - total FY 2008	94,442	8,842,960	3
Federal Government expenditure per capita FY 2008	13,703	9,141	14
Housing			
Housing unit estimates as of July 1, 2009	4,799	441,279	19
Housing unit estimates - net change, April 1, 2000 (base) to July 1, 2009	-48	28,648	56
Housing unit estimates - percent change, April 1, 2000 (base) to July 1, 2009	-1.0	6.9	55
Owner-occupied housing units - percent of total occupied housing units 2000 (complete count)	75.8	69.1	14
Median value of specified owner-occupied housing units 2000 (sample)	59,400	99,500	39
Housing units by units in structure - multiple units 2000 (sample)	20.0	15.7	4
New private housing units authorized by building permits - total 2009 (20,000-place universe)	0	1,686	36
Valuation of new private housing units authorized by building permits 2009 (20,000-place universe)	0	253,576	36
Employment/Business			
Civilian labor force 2009	3,590	498,907	28
Civilian labor force unemployment 2009	171	30,862	30
Civilian labor force unemployment rate 2009	4.8	6.2	31
Employment in all industries (NAICS, no code) 2007	4,820	647,427	27
Employment in all industries, net change 2000 - 2007	164	88,372	32
Employment in government (NAICS 92) 2007	762	93,107	25
Earnings in all industries (NAICS, no code) 2007	130,577	22,293,038	26
Earnings in all industries (NAICS, no code), average earnings per job 2007	27,091	34,433	31
Average travel time to work for workers 16 years and over not working at home 2000 (in minutes)	12.6	17.7	51
Private nonfarm establishments 2007	279	37,755	22
Private nonfarm employment for pay period including March 12, 2007	279	37,755	22
Private nonfarm employment for pay period including March 12, 2007, percent change 2000-2007	2,144.0	353,807.0	24
Nonemployer: total (NAICS 00) - establishments, 2007	545	83,999	25
Accommodation and Food Services: total (NAICS 72) - sales of establishments with payroll 2002	8,409	1,537,986	25
Total number of firms 2002	763	100,402	24
Manufacturing: total (NAICS 31-33) - value of shipments 2002	0	4,987,577	30
Wholesale trade: total (NAICS 42) - sales of establishments with payroll 2002	69,884	7,223,420	12
Retail trade: total (NAICS 44-45) - sales of establishments with payroll 2002	73,562	10,122,625	20
Retail trade: total (NAICS 44-45) - sales of establishments with payroll per capita 2002	9,942	11,116	12
Land in farms (NAICS) 2007 (acres) (adjusted)	2,061,260	61,388,462	8

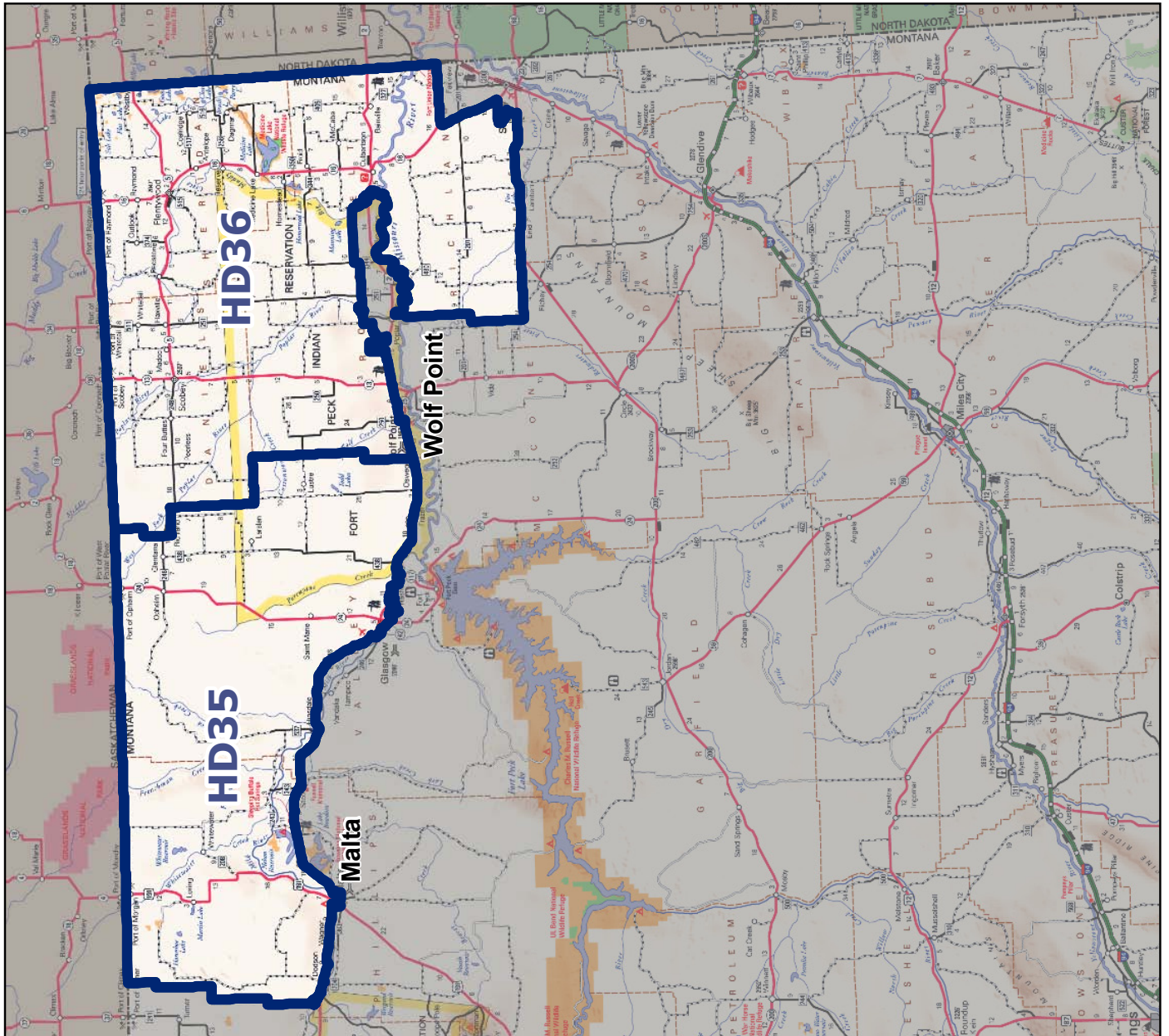
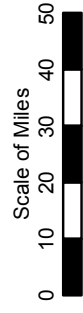
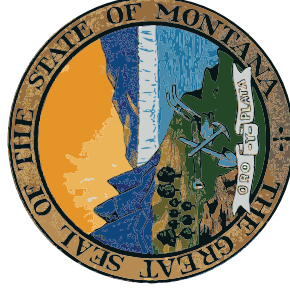
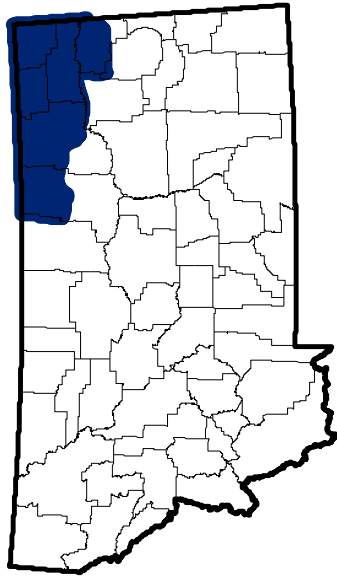
Source: U.S. Census Bureau

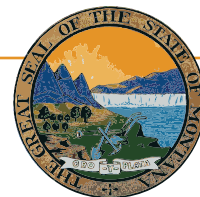
Montana Legislative Districts 2005-2014





Montana Senate District 18





Montana State Library

1515 East 6th Avenue
PO Box 201800
Helena, MT 59620
(406) 444-3115

<http://msl.mt.gov>

Statewide Library Resources

- **Montana Shared Catalog**
- **Montana Library Directory**

<http://mymontanalibrary.org>

http://msl.mt.gov/For_Librarians/Library_Directory

Montana State Digital Library

- **Library Information Services**
 - Archive Montana
 - Montana State Publications Online
 - Request or submit State Publications
 - Montana State Library catalog
 - Online Magazines & Journals
 - Research Databases
- **Natural Resource Information System**
 - Montana GIS Portal
 - Maps and Geographic Information
 - Montana Digital Atlas/Map Gallery
 - Water Information
- **Natural Heritage Program**
 - Montana Field Guide
 - Natural Heritage Tracker
 - Species of Concern Reports - Animals
 - Species of Concern Reports - Plants
 - Map Viewer

<http://archive.msl.mt.gov>

<http://statepublications.mt.gov>

http://msl.mt.gov/for_state_employees/State_Publications

<http://msl.mt.gov/msc>

http://msl.mt.gov/for_state_employees/journals.asp

http://msl.mt.gov/For_State_Employees/Find_Resources_Online/

<http://nris.mt.gov>

<http://gisportal.mt.gov/>

<http://nris.mt.gov/gis>

<http://nris.mt.gov/interactive.html>

<http://nris.mt.gov/wis>

<http://mtnhp.org/>

<http://fieldguide.mt.gov/>

<http://mtnhp.org/Tracker>

<http://mtnhp.org/SpeciesOfConcern/?AorP=a>

<http://mtnhp.org/SpeciesOfConcern/?AorP=p>

<http://mtnhp.org/mapviewer/>

Montana Talking Book Library

- On-line catalogs and services – WebOpac
WebBraille

http://msl.mt.gov/talking_book_library

<http://www.klasweb.msl.mt.gov>

Montana State Library In-House Partners

- **Montana Base Map Service Center**
- **Montana Fish, Wildlife & Parks**
- **Natural Resources Conservation Service**

<http://giscoordination.mt.gov/>

<http://fwp.mt.gov>

<http://www.mt.nrcs.usda.gov/>

Legislative Snapshot

http://msl.mt.gov/legislative_snapshot/