

Legislative Snapshot 2011



Includes information for the State of Montana,
Senate District 15, and House Districts 29 and 30.

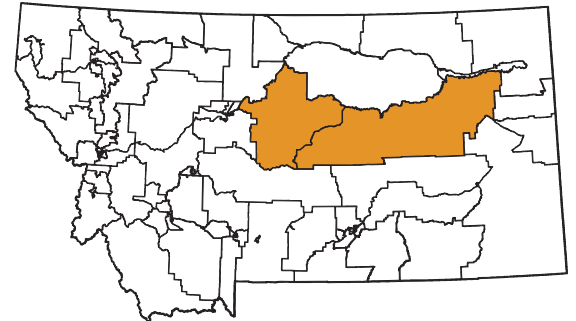
http://msl.mt.gov/legislative_snapshot/



Senate District 15

Senator Jim Peterson (R)

1250 Buffalo Canyon Road
Buffalo, MT 59418-8001



House District 29

Representative Ryan Osmundson (R)

2288 U Bet Road
Buffalo, MT 59418-8101



House District 30

Representative Bill Harris (R)

2009 Old Stage Road
Mosby, MT 59058-9604



Letter from the Montana State Librarian

On behalf of the Montana State Library, I would like to welcome you to the 2011 legislative session. Our information experts have compiled this booklet to be a resource to you as you take on the important work of representing the collective needs of all Montanans and the special needs of your district during this legislative session.



As for past editions, we reviewed proposed bills and national and state trends related to what we believe will be major themes in this legislative session. To that end, you will find a wide range of information on our state's economy, energy production and development, and land and water use. Education is always an important issue, and you will find relevant information on our state's public schools and test scores, as well as on the libraries that help to augment what our schools do. While the drought seems to have subsided, our forests are now inundated by both blight and bark beetles, and you will be able to take a look at the most current information on maps available through the State Library. Finally, wildlife and recreation will always be an important part of Montana life, and we've pulled several highlights from our collection that might help to guide your decision-making this session.

The Montana State Library is a small and very unique agency. We employ not only librarians, but GIS and natural resource specialists and partner with botanists and zoologists, as well as federal and state agencies. We manage an enormous collection of state publications, as we simultaneously work to ensure that Montana's blind and physically disabled have access to reading materials and information.

We also work on behalf of all of Montana's libraries to help them provide the latest and best information and library services to their patrons – your constituents – whether it's downloadable books, public access computers, online resources, or just the latest bestseller. Without the Montana State Library leading the charge, Montana libraries would not be able to afford these resources and services for their patrons – all of which are being used in record numbers during these difficult economic times. In this age of information, most of which is only accessed online, the Montana State Library, through libraries across the state, provides a vital link that affects Montanans in a multitude of ways.

We created this book for you to not only to provide vital information to help you make difficult decisions in the coming months, but to demonstrate the power of what a diverse staff with amazingly diverse skills can do to make information in many different forms available to every Montanan. We are very proud of what we do here at the State Library as we work to empower Montanans by providing access to information, enhancing learning in families and communities, and building 21st Century skills.

We hope that you use this book throughout the session and stop by to see us – in person or virtually. Whether you visit us at our library or online, you will be able to browse our collection of government information, get help researching a specific issue, or find a quiet place to work or meet with colleagues. We are located one block east of the Capitol, behind the Montana Historical Society, at the north end of the Justice building. And of course, our services are available 24 hours a day, seven days a week at <http://msl.mt.gov>.

Sincerely,

A handwritten signature in black ink that reads "Darlene Staffeldt". The signature is written in a cursive, flowing style.

Darlene Staffeldt
Montana State Librarian

Senate District 15 House District 29 House District 30

Table of Contents

2	Recent Performance of the Montana Economy and its Industries
5	Recovery
6	Demographics
8	Education
9	Libraries
11	Land
12	Water
13	Environmental Impacts
14	Energy, Mines
15	Wildlife and Recreation

Appendices

- i Library Directory
- iv State of Montana Index

Senate District 15 County Indexes

- v Chouteau County
- vi Fergus County
- vii Garfield County
- viii Judith Basin County
- ix McCone County
- x Petroleum County

Maps

- xi Legislative Districts
- xiii Senate District 15

Recent Performance of the Montana Economy and Its Industries

Source: Montana Department of Labor, Research and Analysis Bureau

The Montana economy has undergone significant changes in the past two years as the national recession impacted the state. Leading up to the recession, Montana was experiencing faster employment growth, larger wage growth, and lower unemployment than the nation as a whole. Over the 1997-2007 time period, employment in Montana grew at a rate of 2.1% per year – far surpassing the national growth rate of 1.1% and Montana’s long-term average of 1.2% from 1976 to 2009.

Montana continued to outperform the nation during the recession with payroll employment losses of 5.8% compared to 6.1% nationally. In fact, Montana had only two quarters of negative personal income growth in 2008 and 2009 compared to four quarters nationally. Our industry mix, more responsible borrowing and lending practices, and the momentum of the economy preceding the downturn all contributed to our above-average performance. Montana’s unemployment rate also outperformed the national rate. Montana’s unemployment rate increased by 2.7 points from 3.5% in 2007 to 6.2% in 2009, compared to a 4.7 point increase nationally to 9.7% in 2009.

Despite Montana’s better performance, there were a significant number of Montana workers who lost their jobs during the recession, and even Montanans who retained their jobs have experienced slower wage growth. The average wage increased from 2008 to 2009 by only 1.3%



to \$33,760; wage growth in prior years ranged from three to four percent.

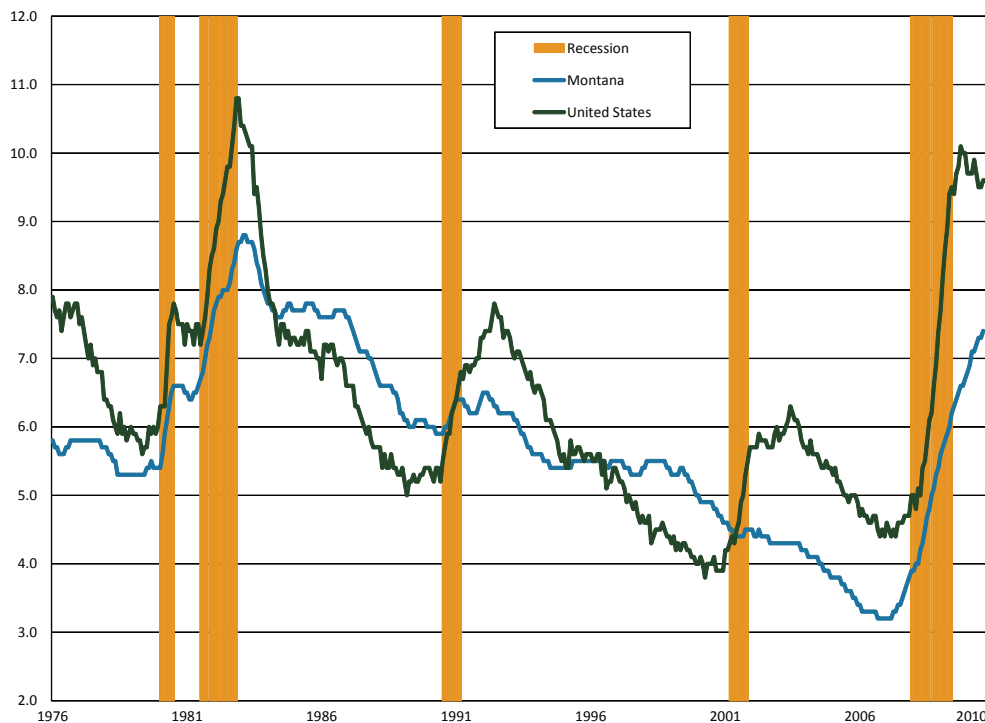
Although the recession is officially over and personal income growth has returned, job growth remains slow. Montana employment grew during the first half of 2010, but jobs were lost in the third quarter as government stimulus spending slowed. Some of this slow job growth is expected because strong labor productivity gains have reduced the demand for workers. Further, employment always lags an economic recovery. Figure 1 shows the U.S. and Montana unemployment rate since 1976 with

recessionary periods designated by the orange background. In recent recessions, the unemployment rate continued to increase after the recession officially ended.

There have been three industries that have continued to grow throughout the recession, helping to stabilize the Montana economy and providing job opportunities for dislocated workers from other industries – health care, public administration, and education. Public administration and education workers are predominantly hired by local, state, or federal governments, and benefited from government stimulus spending during the recession. Over 56% of government employment is hired at the local level, with 26% hired by the state. Government plays an important part of the Montana economy, comprising about 16% of GDP in 2008 and about 20% of employment during 2009. The industry also serves as a stabilizing, counter-cyclical force with slow growth in both economic prosperity and during downturns. Although government employment grew faster than private employment during this recession, private industry outpaced government hiring in the years leading up to the recession.

Health care was the fastest-growing industry during 2007-2009 with employment growth of 7.1% and a job gain of almost 4,100 workers from 2007 to 2009. Employment growth in health care has since slowed (see Figure 3). Health care related occupations, such as registered nurses, nurses’ aides, and home health care aides, are expected to continue to grow as the baby boom generation ages and demands more health care services. The growing health care occupations may provide employment opportunities for many workers who lost their jobs during the recession.

Figure 1. U.S./Montana Unemployment Rates and Recession



One way to examine the long-term impact of the recession on Montana's economy is to divide the industries into three categories based on their roles in the economy – base industries, consumer industries, and business-support industries. Base industries bring new money into Montana through exports and help drive growth in other industries through the increase in wealth. In Montana, these industries are generally natural resource based and include agriculture, mining, energy, manufacturing, and timber. According to the Montana Department of Commerce, the top exports from Montana are bulk wheat, inorganic chemicals, and industrial machinery. Table 2 lists these exports. In addition, federal government services can be thought of as a base industry in Montana because we receive more federal spending than what is paid by Montanans in federal taxes. Tourism can also be a base industry, although many of Montana's tourists come from within the state.

Table 2. Top 10 Exports from Montana Worldwide in Millions of U.S. Dollars

1	Bulk Wheat	447.40
2	Inorganic Chemicals	305.00
3	Industrial Machinery	156.00
4	Mineral Fuel, Oil, etc.	66.00
5	Ores, Slag, Ash	65.30
6	Vehicles, Parts, and Accessory Items	58.40
7	Organic Chemicals	57.70
8	Salt, Sulfur, Earth, and Stone	42.30
9	Paper & Paperboard	33.00
10	Miscellaneous Chemical Products	29.20

Source: Montana Department of Commerce Census and Economic Information Center

During 2008, the agriculture, mining, and energy sectors benefited from high commodity prices and were able to bring wealth into the state to support the state's economy during the first year of the downturn. Commodity prices decreased to long-term trends during 2009, however, leading to a 13% job loss in the mining industry from 2007-2009. Mining employment is relatively small, however, and the mining job loss was less than 1,000 workers. With stronger commodity prices in 2010, mining employment has regained many of their lost jobs. Figure 3 tracks employment levels in mining and other industries during the recession.

However, other base industries in Montana were more severely harmed by the recession. In particular, Montana manufacturers faced plant closures and job losses of over 3,000 jobs (14.8%) from 2001-2009 because of low worldwide demand for their products. Because many manufacturing processes are energy intensive, high energy prices harmed the manufacturing industry even while helping Montana's energy production industries. Over 53% of the manu-

facturing losses occurred in the wood products manufacturing industry and were related to the national downturn in the housing market. The wood products industry lost approximately 1,600 jobs in the past two years. Because the national housing market is expected to recover slowly, and because plant closures and mass layoffs have left holes in the supply chain for many manufacturers, the recession is likely to have long-term impacts on the logging and manufacturing industries in Montana.

The new wealth brought into Montana by base industries drives economic growth in consumer-based industries. Consumer-based industries are industries where growth depends on an increase in population or income, such as construction, retail, health care, or entertainment. As large employers, consumer-based industries play a large role in our economy. However, these industries tend to pay lower wages because of a predominance of lower-skilled jobs. Consumer-based industries made up 61% of Montana's employment, but paid only 52% of wages in the second quarter of 2010.

With the large loss of jobs in manufacturing, wood products, and in other base industries, Montanans had less money to spend in consumer-based industries, resulting in further job losses. The construction industry was the worst hit industry with over 8,300 lost jobs from 2007 to 2009 – a decline of 24.2%, with job losses continuing in 2010. Construction jobs represent over 55% of the total number of jobs lost during the recession. The retail industry faced losses of over 3,700 jobs, but the percentage of jobs lost is smaller at 5.0% due to the large size of the industry.

Finally, the third industry category is business support industries, which require a nexus of economic activity to prosper. Business support industries, such as transportation and warehousing, wholesale, professional services, and administrative support services, depend on the growth of other industries. As the recession affected other industries in the state, the business support industries experienced a slow and steady decline in jobs. Losses in these industries are not as severe as the losses in construction, manufacturing, and retail, ranging from two to four percent of the 2007 employment. Business support services will need other industries to have stronger growth before regaining employment. In the long-term, continuing either amenity-driven population growth or economic growth will allow business support industries to prosper.

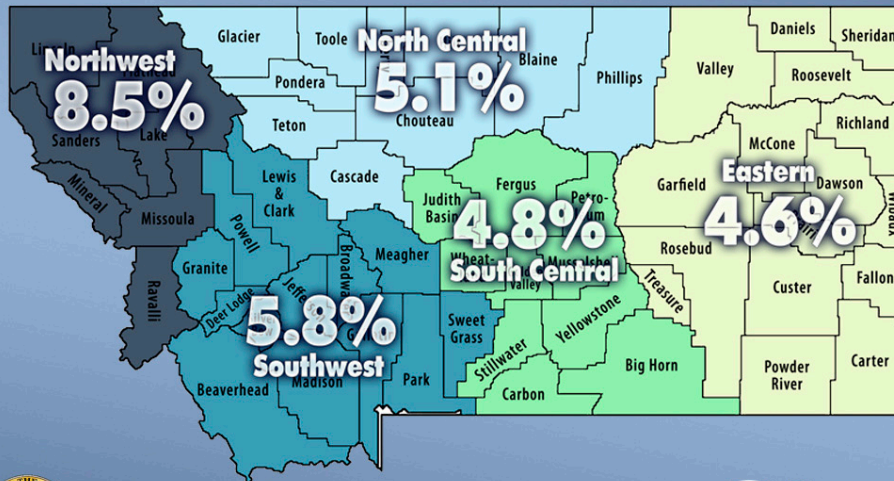
In summary, the Montana economy remains fairly reliant on traditional natural resource-based industries to bring in new money into the state. Many of these base industries will join the nation in economic recovery, but the recession's impacts on the wood products industry and on some manufacturers may be long-lasting. The performance of these base industries will drive growth in the consumer-based and service industries. Consumer-based industries were the fastest growing industries prior to the recession, and employ the majority of the state's workforce. As job and wage growth resumes as a part of economic recovery, consumer-based industries should prosper. Finally, the business support industries depend on a nexus of population and industry. All of these industries are interconnected and rely on each other for success.

Figure 3. Employment in Selected Montana Industries during the Recession





2009 Annual Unemployment Rates by Region



Montana
Department of Labor and Industry



Figure 4

Montana's Regions

The Northwestern portion of Montana felt the impact of the recession most acutely, largely because the region had a large concentration of construction, wood products, and manufacturing workers. All of these industries had large employment losses during the recession. The 2009 average unemployment rate for this region was 8.5%, as shown in Figure 4. In comparison, all other regions had unemployment rates of less than 6%.

In contrast, the Eastern portion of Montana has higher concentrations of employment in utilities and public administration than does the Western portion of the state, with a nearly average concentration in health care. The growth of these industries supported the Eastern Montana economy during the recession. In addition, the Eastern region was not as heavily reliant on the declining industries of construction, retail, and manufacturing as were other parts of the state. Further, the agriculture and mining industries posted relatively strong performances during 2008 due to high commodity prices, although these industries retracted when commodity prices declined.

Despite larger job losses in the Western portion of Montana, the Northwest and Southwest regions still have more jobs than other parts of the state. The more vibrant economies of Western Montana will likely regain their status as economic drivers of our state as the economy recovers from the recession.

Challenges to the Montana Economy

Reducing Unemployment

Although the recession is officially over, the Montana economy continues to face challenges as it exits the recession. The first and foremost of these challenges is to reduce unemployment by adding more jobs and ensuring that our workforce has the skills to fill the new jobs. Although our overall job growth depends on the economic performance of the U.S. and global economy, out-of-work Montanans can prepare themselves for opportunities when job growth resumes. Many industries, particularly construction and retail, have lost so many jobs that it will be difficult for workers to find jobs in their old occupation. For example, the Montana economy is expected to add over 100 new carpenter jobs per year as the economy recovers, but about 2,000 carpenters lost their jobs in the last two

years, still leaving many of these workers without a job. These workers need to be retrained for jobs that have continued to grow throughout the recession, like those in the health care industry, in order to shorten their period of unemployment.

Aging Workforce

A longer-term challenge for the Montana economy is our aging workforce. According to the U.S. Census Bureau's population projections, the percentage of the Montana population that will be over the age of 65 is expected to reach 25% by 2030, making Montana one of the oldest states in the nation. The aging of our population will likely have obvious impacts on our economy, such as increased demand for health care, greater demand for the arts, and changes in state spending for both education and Medicare. The aging of the Montana population will likely drive changes in Montana's education system as well. There will be fewer young people graduating from Montana high schools and more non-traditional students in the Montana University System.

The aging of the population will also cause significant tightening of Montana's labor force. The U.S. Census Bureau's population projections indicate that the working age population in Montana (ages 18-65) will start to decrease starting in 2014, leaving businesses with fewer candidates for job openings. The recession has reduced the urgency posed by the changing demographics of Montana's workforce because of higher unemployment and because the loss of wealth during the recession has caused many workers to delay retirement. However, as our economy recovers, Montana's older workers will be leaving the workforce. Businesses need to plan for the loss of the knowledge and experience held by these workers and for the potential of a tight labor market in the future.



Percent Change in Property Values Due to Reappraisal

	Residential	Commercial	Agricultural	Forest Land	Total
Montana	1.76	2.46	-4.66	-6.72	5.19
Chouteau County	-2.28	1.07	-3.44	-3.22	9.70
Fergus County	0.78	2.31	-3.34	1.69	39.68
Garfield County	-0.66	0.85	-8.38	0.00	-5.19
Judith Basin County	0.07	2.94	-3.31	0.48	3.36
McCone County	-3.02	8.52	-5.15	0.00	-2.42
Petroleum County	-3.93	-0.70	-4.00	-1.29	-1.65

Source: Montana Department of Revenue

Federal ARRA Funds Awarded to Federal Agencies for Projects in Montana

Federal agency recovery awards granted in Montana as reported by recipients.

	Awards	Total Funds Awarded	Funds Per Capita	Funds Received	Local Amount	Jobs Reported
Corps of Engineers	83	31,119,433	32	12,052,085	23,750,292	125.58
Department of Agriculture	522	228,999,873	235	45,362,231	228,648,750	569.87
Department of Commerce	10	24,710,932	25	3,197,892	28,687,567	6.71
Department of Defense (except military departments)	3	940,714	1	891,041	940,714	
Department of Education	641	254,783,938	261	142,782,232	254,566,583	1,681.61
Department of Energy	137	98,884,317	101	25,668,316	125,125,460	209.27
Department of Health and Human Services	270	99,411,947	102	39,551,704	101,083,953	336.32
Department of Homeland Security	27	46,927,021	48	9,923,330	47,688,814	82.01
Department of Housing and Urban Development	50	40,575,921	42	26,026,787	40,575,921	278.39
Department of Justice	106	46,648,742	48	11,105,801	47,835,290	125.01
Department of Labor	60	20,950,269	21	13,009,832	18,718,090	95.82
Department of the Air Force	79	46,081,356	47	19,849,329	43,993,659	55.94
Department of the Army	1	2,527,200	3	2,137,556	2,527,200	11
Department of the Interior	211	121,136,937	124	72,050,481	121,150,873	641.28
Department of the Treasury	2	2,600,000	3	2,600,000	2,600,000	
Department of Transportation	164	292,750,431	300	206,123,442	290,768,051	965.16
Department of Veterans Affairs	12	4,647,311	5	528,439	4,647,311	6.02
Environmental Protection Agency	134	50,383,953	52	38,756,242	50,333,953	76.01
Executive Office of the President	1	13,574	0	13,574	13,574	
General Services Administration	47	66,616,969	68	5,491,124	54,870,279	31.46
National Aeronautics and Space Administration	3	99,784	0	99,784	218,958	0.44
National Foundation on the Arts and the Humanities	5	416,000	0	382,430	416,000	6.63
National Science Foundation	40	21,113,454	22	4,328,693	21,100,349	42.66
Other Independent Agencies	6	1,171,481	1	1,137,555	1,171,481	39.41
Unassigned	3	0	0	0	705,779	
Total	2,617	1,503,511,558	1,542	683,069,899	1,512,138,901	5,386.60

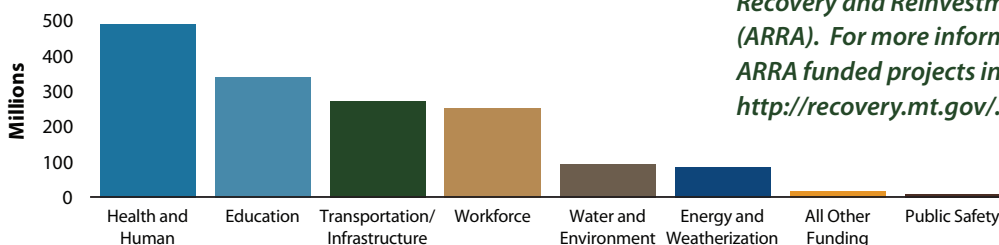
Source: Recovery.gov, November 2010

Broadband Technology Opportunity Program

Under the Broadband Technologies Opportunity Program (BTOP) and in partnership with the Bill & Melinda Gates Foundation, the Montana State Library will partner with 42 of Montana's public libraries to expand access to free, high-speed internet to 86% of the state's population by 2013. Though most local libraries have computers with internet access, many do not have enough computers, fast enough broadband speeds, or ADA-accessible computer facilities to provide adequate services for the thousands of Montanans who need it. As a result, library patrons currently have long wait times of up to two hours for computers, as well as unacceptably slow browsing speeds that inhibit library patrons' ability to apply for social services, find jobs, or complete research.

<http://www.msl.mt.gov/btop/>

Montana Reinvestment Act Project Categories



Source: <http://recovery.mt.gov/>, December 2010



2009 Montana ARRA Funds Awarded

County	Amount
Beaverhead	15,160,291
Big Horn	26,179,900
Blaine	11,507,677
Broadwater	4,472,857
Butte Silver Bow	49,695,135
Carbon	8,354,553
Carter	11,359,144
Cascade	78,805,111
Chouteau	3,243,647
Custer	10,868,688
Daniels	1,539,206
Dawson	9,272,730
Deer Lodge	9,141,378
Fallon	9,656,539
Fergus	14,960,424
Flathead	117,634,647
Gallatin	137,761,188
Garfield	726,212
Glacier	28,838,902
Golden Valley	715,716
Granite	3,382,894
Hill	20,518,576
Jefferson	25,233,220
Judith Basin	1,761,204
Lake	42,073,433
Lewis & Clark	72,455,559
Liberty	1,792,032
Lincoln	23,183,008
Madison	6,386,980
McCone	2,253,416
Meagher	7,682,950
Mineral	8,395,247
Missoula	141,742,279
Musselshell	3,633,199
Park	15,500,397
Petroleum	432,552
Phillips	12,798,377
Pondera	7,460,172
Powder River	1,243,929
Powell	16,419,596
Prairie	1,300,842
Ravalli	41,595,559
Richland	5,167,813
Roosevelt	24,451,178
Rosebud	15,271,410
Sanders	15,697,306
Sheridan	4,821,528
Stillwater	9,221,276
Sweet Grass	4,612,903
Teton	9,018,958
Toole	6,468,309
Treasure	460,621
Valley	5,686,257
Wheatland	1,636,591
Wibaux	1,871,705
Yellowstone	133,317,560
Pass through to states	16,188,675
Statewide	331,827,343
Unallocated	18,219,767

Source: www.recovery.mt.gov, November 2010

Demographics

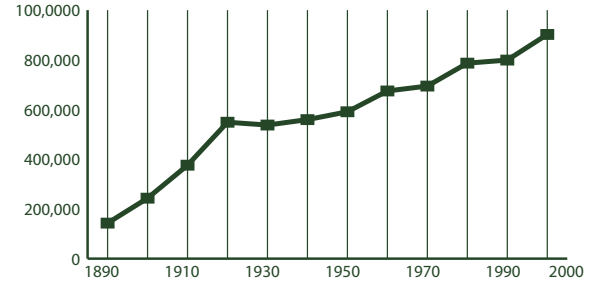
2008 Poverty and Median Income Estimates

Montana ranked 42nd among all U.S. states for median income in 2008.

	Median Household Income	% in Poverty All Ages	% in Poverty Ages < 18
United States	52,029	13.2	18.2
Montana	43,948	14.1	19.2
Chouteau County	40,588	16.2	21.1
Fergus County	39,561	13.7	20.3
Garfield County	35,585	15.4	29.3
Judith Basin County	37,033	15.0	27.2
McCone County	45,770	11.6	18.6
Petroleum County	31,243	17.0	22.7

Source: U.S. Census Bureau, Small Area Estimates Branch

Montana Historic Population Growth 1890 - 2000 Censes



Source: U.S. Census Bureau Population

Population Growth in Montana and Selected Counties

Montana's population density is about 6.5 persons per square mile.

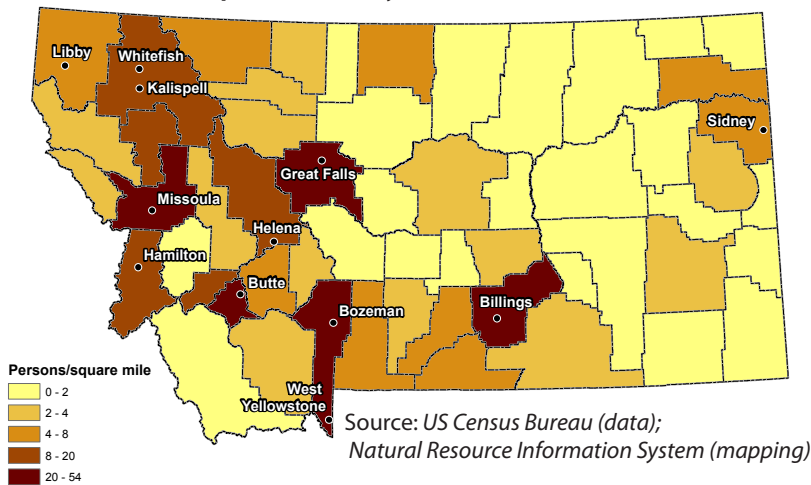
	2000 Census	2009 Estimate	Percent Growth
United States	281,421,906	307,006,550	.09
Montana	902,195	957,861	.08
Chouteau County	5,970	5,167	-13.45
Fergus County	11,893	11,208	-5.76
Garfield County	1,279	1,173	-8.29
Judith Basin County	2,329	2,051	-11.94
McCone County	6,851	7,457	8.85
Petroleum County	493	440	-10.75

Source: U.S. Census Bureau

Look for preliminary 2010 Census data available from the US Census Bureau beginning in February, 2011 <http://2010.census.gov/>



2008 Population Density Estimates - Total Persons



2009 Population Estimates

Montana	
Male	487,981
Under 5 years	31,949
Under 18 years	112,780
18 to 64 years	310,778
65 years and over	64,423
Female	487,008
Under 5 years	30,489
Under 18 years	107,048
18 to 64 years	302,480
65 years and over	77,480
Total	974,989

Source: US Census Bureau, Population Estimates Program

Housing Units for Selected Counties

According to the U.S. Census Bureau, the total number of housing units in Montana increased 6.9% during this period.

	2000	2001	2002	2003	2004	2005	2006	2007	2008	2009	% Change
Chouteau County	2,776	2,778	2,776	2,774	2,774	2,791	2,790	2,808	2,807	2,800	0.86
Fergus County	5,558	5,564	5,561	5,570	5,566	5,581	5,576	5,564	5,555	5,540	-0.32
Garfield County	961	962	962	961	960	964	963	962	959	960	-0.10
Judith Basin County	1,325	1,326	1,325	1,324	1,322	1,330	1,328	1,325	1,322	1,318	-0.53
McCone County	4,671	4,678	4,675	4,689	4,700	4,748	4,750	4,749	4,751	4,740	1.48
Petroleum County	292	292	292	292	292	294	293	292	292	291	-0.34

Source: U.S. Census Bureau, Population Estimates

Corrections - Inmate Population

	2004	2005	2006	2007	2008	2009
Male Prison Beds	2,005	2,180	2,252	2,258	2,170	2,245
Montana State Prison - Deer Lodge	1,325	1,430	1,458	1,463	1,391	1,416
Great Falls Regional Prison	149	151	151	147	143	150
Dawson County Regional Prison - Glendive	140	141	142	142	141	143
Crossroads Correctional Center - Shelby	391	458	501	506	495	536
Actual population_male	2,005	2,180	2,252	2,258	2,170	2,245
Female Prison Beds	171	192	233	209	165	185
Montana Women's Prison - Billings	164	186	218	191	148	168
Intensive Challenge Program - MWP - Billings	7	6	15	18	17	17
Actual population_female	171	192	233	209	165	185

Source: Montana Department of Corrections, May 2010

Employment Status of Montana Women

In 2009, the Interagency Committee for Change by Women (ICCW) conducted a survey of women in the workforce. For more information visit <http://www.mdt.mt.gov/iccw/surveys/wwwork.shtml>.

	1978	2009
Total Employed	45.30	94.7
Full-Time	30.50	84
Part-Time	14.80	10.6
Total Not Employed	54.60	5
Non-working	39.80	4.6
Retired	12.50	0.6
Disabled	2.3	0.1

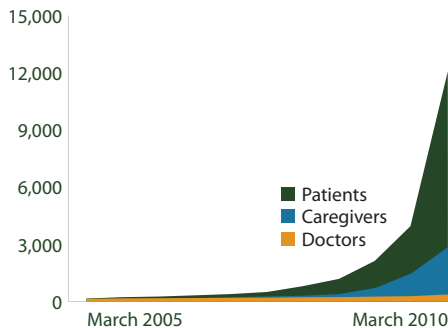
Source: 2009 Survey of Women and Work

Montana Children and Social Services

	Children's Population 2008	Percent of Children in Poverty 2008	Free/Reduced Price Lunch Eligibles 2008/09	Daycare Program Participants* 2007	Special Education Program Enrollment 2008/09	Healthy Montana Kids Enrollment 2009	Medicaid Enrollment 2009
Montana	220,358	21.0	51,333	8,051	17,636	17,465	46,463
Chouteau County	1,096	21.1	271	4	77	110	122
Fergus County	2,169	20.3	688	151	265	304	393
Garfield County	267	29.3	68	8	19	67	31
Judith Basin County	379	27.2	145	12	33	70	53
McCone County	326	18.4	75	0	34	52	28
Petroleum County	89	22.7	66	0	10	30	6

Source: MontanaKidsCount, <http://montanakidscount.org/> *facilities participating in state program

Montana Medical Marijuana Use Program



Source: Montana Medical Marijuana Program, June 2010

Montana Sexual or Violent Offender Registry Number of Convictions by Offense

Arson	94
Assault (including Aggravated Assault)	1,727
Dangerous Drugs	82
Family Offense	619
Homicide	138
Incest With A Minor	116
Kidnapping	76
Other	101
Robbery	536
Sex Offense	187
Sexual Assault	2,333
Total	6,004

Source: Department of Justice, Montana Sexual or Violent Offender Registry, September 2010

Veteran Population Projections

Montana is ranked second among the states for percent of the civilian population 18 years and over who are veterans. (13.9 percent, 2006-2008 American Community Survey)

	2000	2010	2020	2030
Montana	108,330	102,015	89,052	76,230
Chouteau County	690	489	384	294
Fergus County	1,558	1,372	1,069	845
Garfield County	150	125	96	60
Judith Basin County	290	234	185	140
McCone County	995	1,047	834	624
Petroleum County	66	55	47	35

Source: United States Department of Veteran Affairs, October 2007

Temporary Assistance For Needy Families (TANF) Comparison

	2005 Cases	2005 Case Avg	2009 Cases	2009 Case Avg	Apr 2010 Cases	Apr 2010 Case Avg
Montana	4,820	356	3,466	392	3,784	426
Chouteau County	7	359	5	330	3	332
Fergus County	14	335	9	457	18	430
Garfield County	0	0	0	0	1	0
Judith Basin County	2	217	1	281	2	401
McCone County	1	328	1	376	1	401
Petroleum County	0	0	1	376	0	0

Source: Montana Department of Public Health and Human Services, April 2010

Education

Schools in Senate District 15

There are 832 public K-12 and 14 private accredited schools in Montana. Montana also has 15 public, 6 private, and 7 tribal colleges. Senate and House district figures in the table below show the number of schools located in cities within 10 miles of the district's boundaries.

	Montana	Senate District 15	House District 29	House District 30
High Schools	173	56	36	32
Middle Schools	213	60	36	36
Elementaries	446	112	62	73
Total	832	228	134	141

Source: Office of Public Instruction, September 2010

Montana School Size and Enrollment 2009 - 2010

School Size	Percent of Schools	Enrollment	Percent of Enrollment
>500	6	42,927	30
250 to 499	19	56,027	40
100 to 249	19	26,444	19
50 to 99	14	8,563	6
<50	41	7,846	6
Total	100	141,807	100

Source: OPI Facts About Montana Education, September 2010

School Districts - Number of in Area

	Senate District 15	House District 29	House District 30
Elementary	48	24	2
Secondary	31	19	2
Unified	12	4	1
Total	91	47	5

Source: Montana Base Map Service Center, November 2009

Montana Dropout Rate - Percent of Total Enrollment

Grade / Gender	2004-05	2005-06	2006-07	2007-08	2008-09	5-yr Average
7 & 8 Total	0.2%	0.2%	0.3%	0.3%	0.3%	0.2%
Male	0.2%	0.2%	0.3%	0.3%	0.4%	0.3%
Female	0.1%	0.2%	0.3%	0.3%	0.2%	0.2%
HS Total	3.3%	3.6%	3.7%	5.2%	5.1%	4.2%
Male	3.6%	3.9%	4.2%	5.5%	5.6%	4.5%
Female	3.1%	3.3%	3.2%	4.8%	4.6%	3.8%
Overall Total	2.3%	2.5%	2.7%	3.6%	3.6%	2.9%
Male	2.5%	2.7%	3.0%	3.9%	3.9%	3.2%
Female	2.1%	2.3%	2.3%	3.4%	3.2%	2.6%

Source: Montana Statewide Graduate and Dropout Report, 2008 - 2009 School Year

2009 Youth Risk Behavior Survey - Percentage of Respondents

		1995	1997	1999	2001	2003	2005	2007	2009
Drove when drinking alcohol during the past 30 days	U.S.	15.4	16.9	13.1	13.3	12.1	9.9	10.5	9.7
	Montana	27.4	26.7	22.7	21.8	20.4	18.5	16.0	13.5
Rode with a driver who had been drinking alcohol during the past 30 days	U.S.	38.8	36.6	33.1	30.7	30.2	28.5	29.1	28.3
	Montana	48.1	46.6	43.1	39.3	36.9	34.4	32.9	28.8
Carried a weapon (gun, knife, or club) during the past 30 days	U.S.	20.0	18.3	17.3	17.4	17.1	18.5	18.0	17.5
	Montana	22.6	23.8	20.3	21.4	19.4	21.4	22.1	23.0
Current cigarette use (smoked cigarettes during the past 30 days)	U.S.	34.8	36.4	34.8	28.5	21.9	23.0	20.0	19.5
	Montana	34.8	38.1	35.0	28.5	22.9	20.1	20.0	18.7
Current alcohol use (drank alcohol during the past 30 days)	U.S.	51.6	50.8	50.0	47.1	44.9	43.3	44.7	41.8
	Montana	58.2	59.0	57.6	54.1	49.5	48.6	46.5	42.8
Binge drinking (5 or more drinks within a couple hours during the past 30 days)	U.S.	32.6	33.4	31.5	29.9	28.3	25.5	26.0	24.2
	Montana	43.1	44.4	43.6	41.4	37.3	34.4	32.7	30.1
Current marijuana use (used marijuana during the past 30 days)	U.S.	25.3	26.2	26.7	23.9	22.4	20.2	19.7	20.8
	Montana	20.1	26.9	25.5	27.1	23.1	22.3	21.0	23.1
Ever had sexual intercourse	U.S.	53.1	48.4	49.9	45.6	46.7	46.8	47.8	46.0
	Montana	47.0	45.9	42.5	43.9	43.6	43.6	45.7	47.6
Attempted suicide during the past 12 months	U.S.	8.7	7.7	8.3	8.8	8.5	8.4	6.9	6.3
	Montana	8.5	8.4	6.7	10.4	9.7	10.3	7.9	7.7

Source: U.S. Census Bureau

National Assessment of Education (NAEP) Progress Historical Performance in Montana Schools

Subject	Grade	Year	State Average	National Average
Mathematics (scale: 0-500)	4	1996 ⁿ	228	222
		2003	236	234
		2005	241	237
		2007	244	239
		2009	244	239
	8	1990 ⁿ	280	262
		1996 ⁿ	283	271
		2003	286	276
		2005	286	278
		2007	287	280
Reading (scale: 0-500)	4	1994 ⁿ	222	212
		1998	225	213
		2003	223	216
		2005	225	217
		2007	227	220
	8	2009	225	220
		1998	271	261
		2003	270	261
		2005	269	260
		2007	271	261
Science (scale: 0-300)	4	2000	160	145
		2005	160	149
		1996 ⁿ	162	148
		2000	164	148
		2005	162	147
	8	2002	149	153
		1998	150	148
		2002	152	152
		2007	157	154
		2009	157	154

ⁿ Accommodations were not permitted for this assessment

Source: National Center for Education Statistics



Libraries

There are 761 libraries in Montana. Senate and House district figures in the table below show the number of libraries located in cities within 10 miles of the district's boundaries. For more detailed information on Montana's libraries visit http://www.msl.mt.gov/For_Librarians/Library_Directory/.

Source: *Montana State Library, November 2010*

	Montana	Senate District 15	House District 29	House District 30
Public	81	13	7	6
Branches	31	6	4	2
Bookmobiles	3	0	0	0
School	562	58	26	32
Academic	28	2	1	1
Special or Other	56	1	1	0
Total	761	80	39	41

Montana Talking Book Library

Services for Blind or Disabled Montanans

- In 2009-2010, our 5 employees and 100 volunteers provided FREE specialized library services, via mail or download, by circulating 259,382 books and materials to 4,173 blind or disabled Montana veterans and residents of all ages. Since 2009, we served an additional 1,097 more patrons - a 28% increase.
- Our patrons benefit from a variety of access options: the newest easy-to-use, accessible digital book program; free digital talking book machines delivered to patrons' homes; free eLibrary with 20,000 books to download; 63,000 additional book titles and 80 periodicals for loan in one or more formats; access to radio or phone newspaper services.
- Our Montana Recording Program has produced over 1,000 Montana books for all ages.
- Our Montana Braille /Twin Vision Program has produced over 442 books for Montana children.
- Special funding from the 2009 Legislature successfully provided patrons of MONTANA AUDIO Information Network (formerly Montana Radio Reading Service) and Montana Association for the Blind with improved access and expanded newspaper resources.



For more information:

<http://msl.mt.gov/tbl/> OR 1-800-332-3400

Senate and House district figures in the table below show the number of patrons located in cities within 10 miles of the district's boundaries.

	Montana	Senate District 15	House District 29	House District 30
Total Patrons	4,173	188	123	144
Veterans Who Are Patrons	409	17	11	13
Patron Count by Disability				
Blindness	1,212	44	30	33
Low Vision	2,129	83	56	63
Physical	350	32	19	27
Reading	482	29	18	21

Source: *Montana Talking Book Library*

Montana Public Libraries Fast Facts

- Montana's public libraries hold 3,348,859 items.
- Montanans visited their public libraries an average of five times throughout the year, for a total of 4,429,464 visits in 2009.
- Montana library patrons checked out 6,244,116 items in 2009, about seven items per person.
- Librarians in Montana's public libraries fielded 428,844 reference questions in SFY 2009, or 8,247 questions per week.
- 100% of all Montana libraries provide Internet access to patrons
- Nearly half of all Montanans (442,311) have a library card.

Montana Shared Catalog Statistics

The Montana Shared Catalog helps Montana libraries meet today's library users demands. It gives Montanans a rich and easy-to-use catalog including more than 3.3 million items which patrons circulated 4,178,877 times in SFY 2010. Additional groups that partner to share their catalogs include the 4 Rivers, BridgerNet, and Partners groups. Senate and House district figures below show the number of libraries located in cities within 10 miles of the district's boundaries.



Havre-Hill County library director, Bonnie Williamson, using the Montana Shared Catalog system to check out a book to a patron.

Montana Shared Catalog Senate District 15 Public and Branch Libraries

Big Sandy Branch Library, *Big Sandy*
Highwood School Community Library, *Highwood*
Lewistown Public Library, *Lewistown*
Petroleum County School-Community Library, *Winnett*
Poplar City Library, *Poplar*
Roosevelt County Library, *Wolf Point*

	Montana	Senate District 15	House District 29	House District 30
Participating Libraries	132	8	5	4
Patrons	364,554	8,408	5,383	7,404
Items	3,325,517	190,898	107,340	141,410
Partner Group Libraries	28	0	0	0

Statewide Library Training

The Montana State Library's consultants travel throughout Montana and meet one-on-one with librarians and library trustees across the state, assisting with everything from training and technology to applying Montana library law and fundraising basics. In the last fiscal year, MSL's consultants traveled over 60,000 miles, made over 2,000 contacts and completed over 400 visits with Montana's library community.

Total Attendees	1,321
Number of Workshops	113
Number of different Montana locations	63

Time period: January 2009 - December 2010

Source: *Montana State Library*



Statewide Library Resources

The Montana State Library works on behalf of all Montana libraries to help them provide the latest and best information and library services to their patrons – your constituents. We negotiate on behalf of libraries across the state to get the best rate on cutting-edge library products and services, on which many Montanans depend for everything from making health care decisions to finding a job. Examples include our statewide contract with OCLC, a worldwide consortium of libraries dedicated to providing top-notch library services and a subscription to the genealogy database, HeritageQuest which is available to all public libraries in the state. Without statewide library projects, some of which are listed here, many Montanans would be left behind in this age of information.

Statewide Databases

Thanks to an allocation from the Montana legislature, the Montana State Library offers statewide databases to all Montana library patrons. Access to this completely online collection – accessible in the library, at home, or on a mobile device – includes hundreds of databases and thousands of full text articles on everything from business resources to health information.

Ready 2 Read

The Montana State Library's Ready 2 Read program is designed to help parents and caregivers understand the value of sharing language and literacy



with their children and the importance these skills play throughout a person's life. So far, 45 libraries have received extensive early childhood training and a large number of materials to serve Montana's youngest library patrons; additionally these 45 libraries now offer programming just for children ages 0 – 3.

<http://ready2readmontana.org/>

Courier Pilot Project

As access to quality information has become a vital part of our lives, the Montana State Library is working on a number of ways for libraries to share information and materials affordably and dependably. One of these methods is the Montana Courier Project, which uses a commercial courier service to ship library materials and resources around the state. As the pilot participation has grown, participating libraries are seeing increasingly significant savings in the cost of moving library materials around the state.

Participating Libraries

Senate and House district figures in the table below show the number of libraries located in cities within 10 miles of the district's boundaries.

	Montana	Senate District 15	House District 29	House District 30
Statewide Databases	762	65	39	41
OCLC	250	16	10	10
Courier Project	34	11	7	6
MontanaLibrary2Go	48	3	1	3
HeritageQuest	86	12	7	7
Montana Memory Project	15	1	1	1

Source: Montana State Library

Montana's Cultural Heritage

In partnership with the Montana Historical Society and other partners, the Montana State Library helps to ensure that Montanans have ready access to our Montana cultural heritage. The Montana Memory Project provides online access to digitized copies of historic as well as contemporary material that serve as a resource for education, business, pleasure, and lifelong learning. <http://mtmemory.org/>



First train from St. Paul, over the last spike enroute to Portland, OR. September 8, 1883
Montana Historical Society Photo Archives
Montana Memory Project

Additionally, the Montana State Library launched the online companion to the Montana Historical Society's *Montana Place Names: From Alzada to Zortman*. This web mapping application makes discoverable the history of more than 1,200 Montana place names and includes all the photos and descriptions found in the book. <http://mtplacenames.org/>

State Publications Available Online!

The Montana State Library is digitizing our legacy print state publications collection of 55,000 publications dating to 1874. To date, nearly one million pages have been digitized. All of these publications are available online in a variety of formats at <http://statepublications.mt.gov>. Use of these items is 250 times more frequent than traditional print.

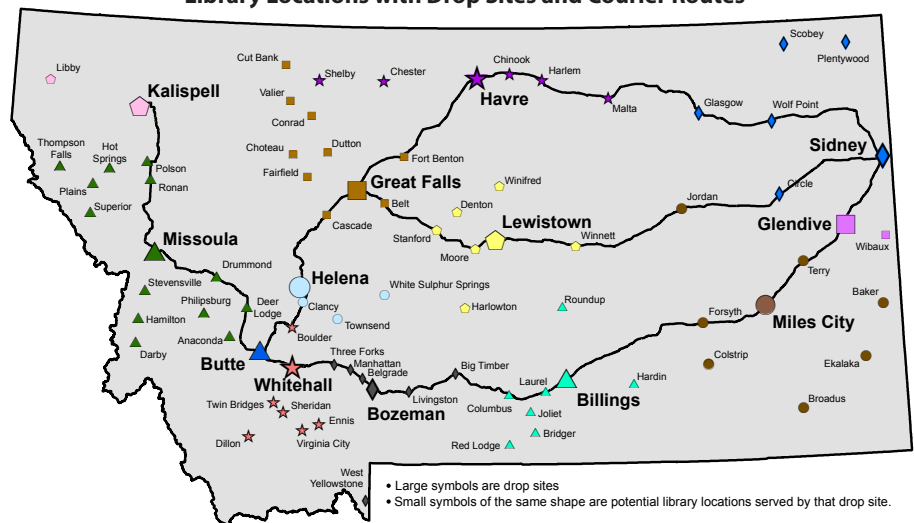
Montana Library 2 Go

Montana library patrons are reading more books on mobile devices than ever before and Montana libraries are delivering the goods with Montana Library 2 Go, a collection of downloadable audio and E-book titles to patrons of participating libraries. Titles are available for download on MP3 players, iPods, iPads and other playing and reading devices.

GIS Portal

Funded by the 2007 Legislature and first launched in 2008, the Montana GIS Portal serves as Montana's primary online resource to discover geospatial data. The Portal provides online access to hundreds of datasets in a variety of formats for use in maps, web mapping applications and geospatial analyses. <http://gisportal.msl.mt.gov/>

Montana Library Courier/Delivery Service Pilot Library Locations with Drop Sites and Courier Routes



Source: Montana State Library, December 2010

Land

Land Ownership

Senate District 15 ranks number 1 in size and is 17,328.134 square miles, or about 12% of Montana's total land area (146,923.321 square miles). The average senate district in Montana is 2,938 square miles and the average house district is 1,469 square miles.

Owner	Montana		Senate District 15		House District 29		House District 30	
	Area (Sq Mi)	%	Area (Sq Mi)	%	Area (Sq Mi)	%	Area (Sq Mi)	%
Private	95,738	65	12,578	73	4,513	73	8,066	72
Local Government	32	< 1	1	< 1	< 1	< 1	1	< 1
Montana Fish, Wildlife and Parks	470	< 1	23	< 1	23	< 1	< 1	< 1
State Trust Land	8,020	5	1,166	7	568	9	598	5
Other State Land	89	< 1	< 1	< 1	< 1	< 1	< 1	< 1
US Bureau of Land Management	12,451	8	2,298	13	496	8	1,802	16
US Fish and Wildlife Service	1,373	< 1	588	3	32	< 1	556	5
US Forest Service	26,317	18	662	4	514	8	147	1
US National Park Service	1,829	1	0	0	0	0	0	0
Other Federal Land	318	< 1	< 1	< 1	< 1	< 1	< 1	< 1
Total	146,923		17,328		6,150		11,178	

Source: Montana Natural Heritage Program, July 2010

Private Land Agricultural Use

Owner	Montana		Senate District 15		House District 29		House District 30	
	Acres	%	Acres	%	Acres	%	Acres	%
Continuous Crop	25,468	< 1	0	0	0	0	0	0
Fallow Crop	13,281,791	16	1,868,888	20	945,538	27	923,350	15
Farmstead	0	0	0	0	0	0	0	0
Grazing	49,048,154	59	6,347,558	67	1,895,150	54	4,452,408	74
Irrigated	5,220,163	6	490,729	5	110,505	3	380,224	6
Timber	14,168,777	17	552,422	6	419,088	12	133,334	2
Wild Hay	1,097,282	1	276,084	3	163,674	5	112,409	2
Total	82,841,635		9,535,681		3,533,956		6,001,726	

Source: Montana Department of Administration Information Technology Services Division - Geographic Information Services, October 2010

Conservation Easements (Acres)

	Montana	Senate District 15	House District 29	House District 30
	Bitter Root Land Trust	2,422	0	0
City Government	601	0	0	0
Clark Fork- Pend Oreille Conservancy	151	0	0	0
County Government	528	0	0	0
Ducks Unlimited (Wetlands America Trust)	16,979	517	517	0
Five Valleys Land Trust	37,763	0	0	0
Flathead Land Trust	8,054	0	0	0
Gallatin Valley Land Trust	36,149	0	0	0
Montana Department of Transportation	938	8	0	8
Montana Fish, Wildlife, and Parks	384,984	10,091	10,017	74
Montana Land Reliance	831,566	79,973	46,262	33,710
National Wildlife Federation	20	0	0	0
Prickly Pear Land Trust	3,246	0	0	0
Rattlesnake Land Trust	190	0	0	0
Rocky Mountain Elk Foundation	49,220	0	0	0
Salish and Kootenai Tribe	102	0	0	0
The Bighorn Institute	1,443	0	0	0
The Nature Conservancy	309,443	0	0	0
The Vital Ground Foundation	833	0	0	0
US Bureau of Reclamation	42	0	0	0
US Department of Agriculture	17,652	0	0	0
US Fish and Wildlife Service	232,456	561	0	561
US Forest Service	20,038	0	0	0
Total	1,955,555	91,150	56,795	34,354

Source: Montana Natural Heritage Program

Montana Spatial Data Infrastructure

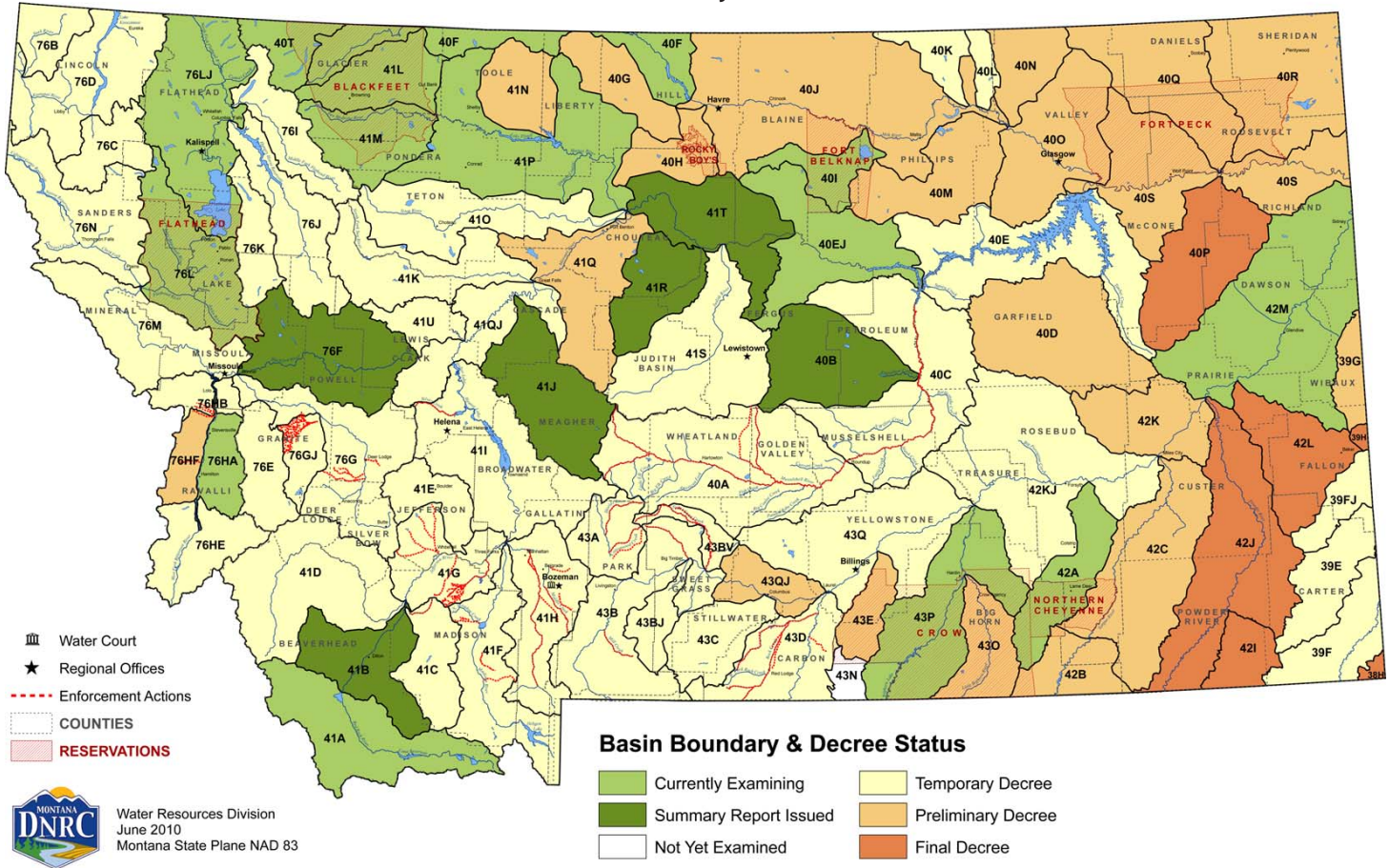
The Montana Spatial Data Infrastructure (MSDI) is a digital representation of Montana's physical and cultural landscape that allows the state to be mapped. Some of the individual components of the MSDI are roads, lakes and streams, land ownership, administrative boundaries, soils, land use, structures, aerial photographs, watersheds, wetlands, elevation, and geology.

This information is fast becoming a critical element for policy review at the state and local levels in both the public and private sectors. For more information see: <http://giscoordination.mt.gov/>.



The Department of Natural Resources and Conservation maintains a database of water rights to assist Montana citizens and the Montana Water Court in the water rights adjudication process. Visit their site at http://dnrc.mt.gov/wrd/water_rights/.

Basin Location and Adjudication Status



Dams in Senate District 15

There are 3,666 dams in the national inventory of dams for Montana. Predominant uses are stock/farm ponds (48%) and irrigation (22%). Additional dams not included in the inventory can be found by searching for water rights.

Source: *National Inventory of Dams, USGS Geographic Names Information System, September 2003*

Type	Montana	Senate District 15	House District 29	House District 30
Debris Control	1	0	0	0
Fish and Wildlife Pond	1	0	0	0
Flood Control	43	6	0	6
Hydroelectric	26	0	0	0
Irrigation	822	115	23	92
Recreation	54	3	3	0
Stock/Small Farm Pond	1,771	439	80	359
Tailings	8	0	0	0
Water Supply	44	1	0	1
Other	68	3	1	2
Unknown	828	143	20	123
Total	3,666	710	127	583

Public Water Supplies

There are 3,266 public water supplies located in the State of Montana, 78 of which are located in Senate District 15. These figures do not include public water supplies serving Native American nations.

	Count
House District 29	
Public, community	34
Public, non-community, non-transient	2
Public, transient	16
House District 30	
Public, community	11
Public, transient	15

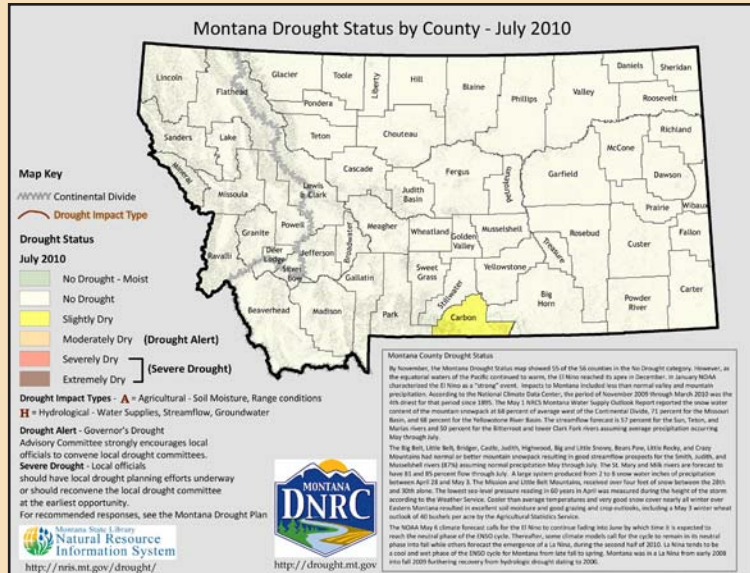
Source: *Department of Environmental Quality, December 2007*



Montana Drought Resources

The Montana Governor's Drought Advisory Committee is charged with monitoring, forecasting, and reporting water supply and moisture conditions, enabling Montanans to make timely and informed decisions to mitigate drought impacts in a proactive manner.

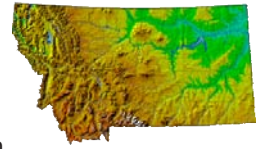
For up-to-date information and maps on Montana's current drought situation visit <http://drought.mt.gov/>.



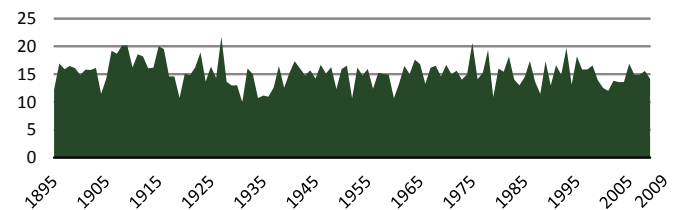
Source: Natural Resource Information System

Montana Digital Atlas

Additional mapping and data capabilities are available through the Montana State Library at <http://nris.mt.gov/>. The Montana Digital Atlas provides unlimited access to detailed information on such issues as climate, environmental impacts, land information, water, and cultural data.



Montana Annual Precipitation in Inches (1895 - 2009)



Source: NOAA Satellite and Information Service

Montana Fires 2002 - 2008

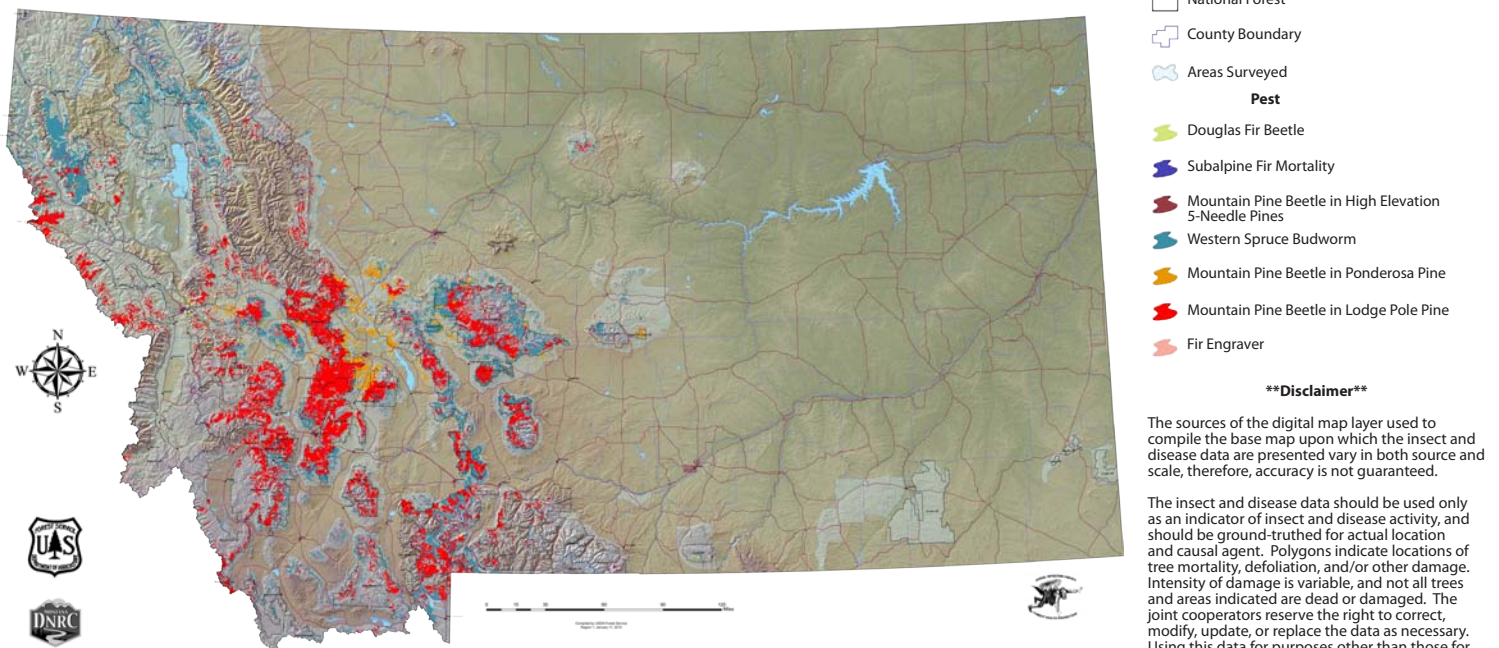
All Fires As Reported by All Agencies

Year	Count	Acreage
2002	1,372	110,309
2003	2,326	736,809
2004	1,447	18,445
2005	1,316	103,294
2006	2,302	1,047,118
2007	1,875	778,079
2008	1,424	166,842

Source: Department of Natural Resources and Conservation

2009 Aerial Detection Survey Data - Insect and Disease Outbreaks in Montana

As Detected by Forest Health Protection's (FHP) Aerial Insect and Disease Detection Survey - USDA Forest Service.



Oil and Gas Wells in Senate District 15

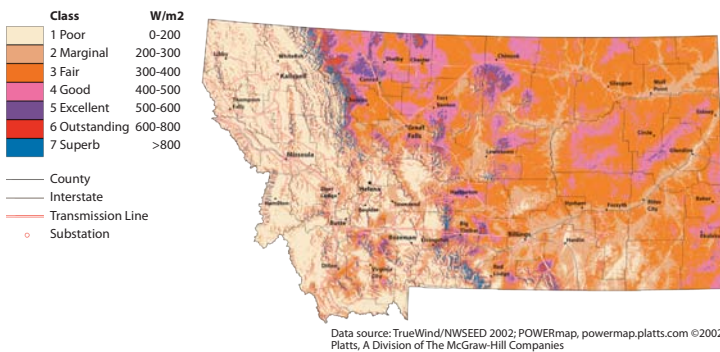
	Montana	Senate District 15	House District 29	House District 30
Coal Bed Methane, Active	1,117	0	0	0
Coal Bed Methane, Inactive	40	0	0	0
Gas, Active	7,351	171	169	2
Gas, Inactive	2,509	72	66	6
Gas Storage, Active	272	0	0	0
Gas Storage, Inactive	14	0	0	0
Injection, Active	1,109	17	0	17
Injection, Inactive	749	43	0	43
Oil, Active	7,230	106	0	106
Oil, Inactive	4,511	274	0	274
Total	24,902	683	235	448

Source: Montana Board of Oil and Gas Conservation, October 2008

Additional information about oil and gas wells is available through the Board of Oil and Gas Conservation's WebMapper which can be accessed at <http://bogc.dnrc.mt.gov/>.

Energy Atlas

Wind Power at 50 Meters - Wind Power Density



Abandoned Mines and Remediation Sites

	Abandoned Mines	Remediation Sites
Montana	6,954	765
Senate District 15	741	32
House District 29	264	16
House District 30	477	16

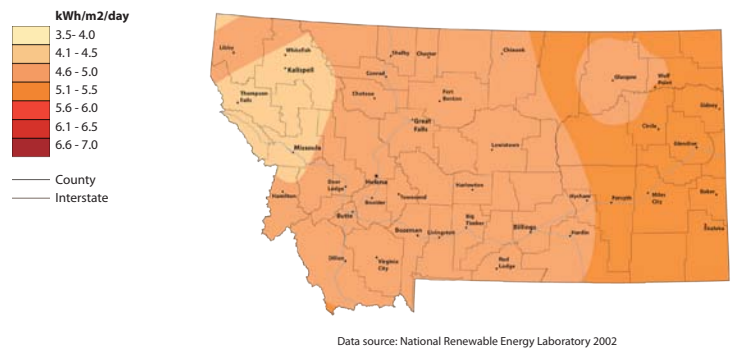
Source: Montana Department of Environmental Quality, November 2010

Montana House Heating Fuel

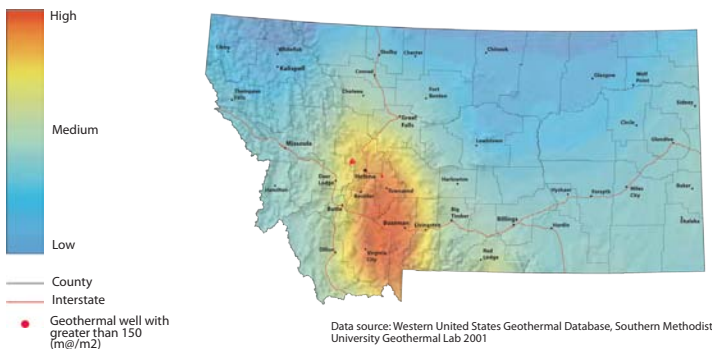
Occupied housing units		
Utility gas	373,455	100%
Utility gas	215,172	57.6%
Bottled, tank, or LP gas	49,291	13.2%
Electricity	66,504	17.8%
Fuel oil, kerosene, etc.	7,126	1.9%
Coal or coke	841	0.2%
Wood	29,473	7.9%
Solar energy	235	0.1%
Other fuel	4,064	1.1%
No fuel used	749	0.2%

Source: 2006-2008 American Community Survey 3-Year Estimates

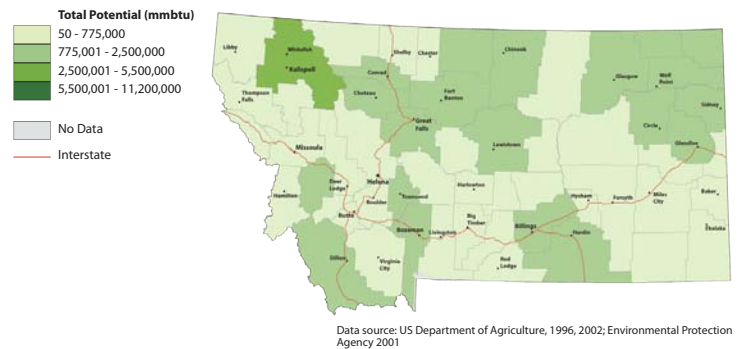
Solar Insolation Annual Average



Geothermal Potential



Total Energy Potential from Biomass Residue



Find additional energy related data and maps at <http://www.energyatlas.org/>

Pipelines in Senate District 15

	Montana		Senate District 15		House District 29		House District 30	
	Count	Miles	Count	Miles	Count	Miles	Count	Miles
Crude Oil	90	1,970	9	254	5	208	4	46
Natural Gas	360	3,301	13	103	7	46	6	57
Refined Product	47	805	0	0	0	0	0	0
Other	24	402	1	6	1	6	0	0
Total	521	6,477	23	362	13	260	10	103

Source: Pipeline Integrity Management Mapping Application, December 2006

Wildlife and Recreation

Species Diversity in Senate District 15

	Montana (Count)	Senate District 15 (Count)	% of Montana Species
Amphibians	13	8	62
Birds	328	286	87
Fish	81	63	78
Mammals	107	82	77
Reptiles	17	15	88

Source: Montana Natural Heritage Program

Recreation Area (Acres)

	Senate District 15
Fishing Access Sites	767
Fishing Conservation Areas	0
State Parks	487
Wildlife Conservation Easements	0
Wildlife Protection Areas	0
Wildlife Management Areas	15,952
Total	17,206

Source: Montana Fish, Wildlife, and Parks

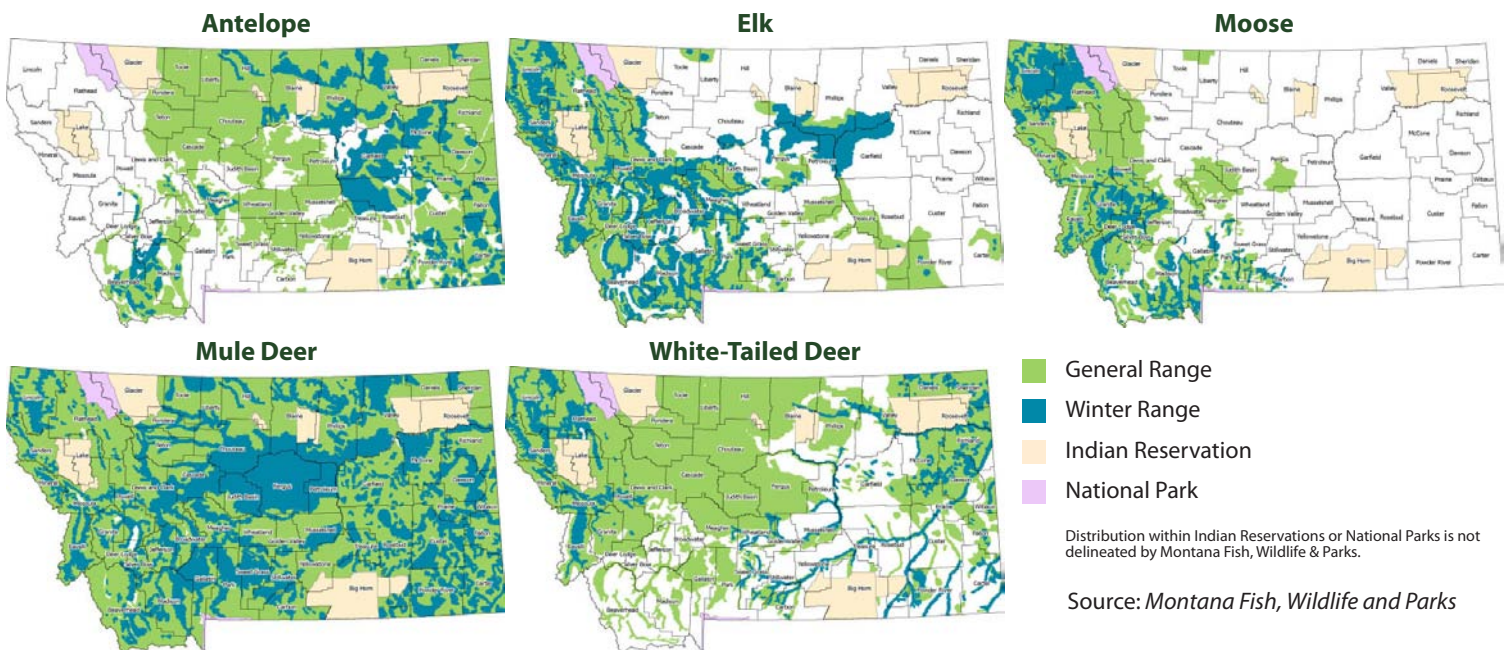
Block Management Acreage

There are a total of 7,522,358 acres of Block Management land (excluding Plum Creek*) in the State of Montana. 1,391,626.00 of those acres or 18% are located in Senate District 15.

*Plum Creek land in FWP's Regions 1 and 2 are not included in these statistics. Although they are part of the Block Management Program, they are not traditional BMA's and are managed differently.

Source: Montana Fish, Wildlife and Parks

Big Game Distribution



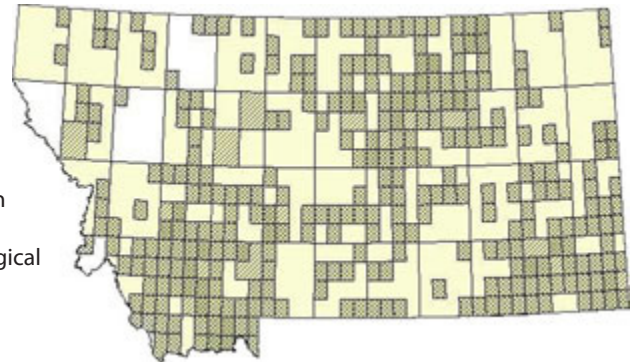
Brewer's Sparros

Spizella breweri



The Brewers Sparrow nests in sagebrush habitats across Montana where they forage for insects and seeds to support 3-4 young. During winter, individuals migrate to the southwestern United States and Mexico.

Spizella breweri General Observations Range



Source: Montana Natural Heritage Program

Montana is blessed with a wealth of wildlife and habitat diversity. These resources provide exceptional opportunities for recreation and contribute substantially to the state's economy and quality of life.

Wildlife Highlights

For more information on animals, plants, and habitats in your Senate District, visit the Montana Natural Heritage Program at <http://mtnhp.org>. Resources include:

- Montana Field Guide - an encyclopedia of the distribution, status, and biology of Montana's animals, plants, and biological communities
- Natural Heritage Tracker and Map Viewer – interactive maps of animals, plants, land cover, and land stewardship
- Land Stewardship Maps – public lands, conservation easements, and special designations
- Wetland and riparian mapping information
- Reports on Montana's Species of Concern
- Quick responses to data requests and answers from expert scientists on Montana's plants, animals, and biological communities.

Senate District 15 Libraries and Digital Library Resources

Public



Chouteau County Library

Jill Munson, Library Director
Chouteau County
PO Box 639 Fort Benton, MT 59442
(406) 622-5222
Web Site: <http://www.chouteaucountylibrary.com>
[googlepages.com](http://www.google.com)
OCLC, HeritageQuest, Courier Project, Statewide Databases



Denton Public Library

Lori Weinheimer, Library Director
Fergus County
PO Box 986 Denton, MT 59430
(406) 567-2571
Web Site: <http://www.dentonpubliclibrary.com>
[googlepages.com](http://www.google.com)
OCLC, HeritageQuest, Courier Project, Statewide Databases



Dorothy Asbjornson Community Library

Janet Poertner, Library Director
Fergus County
PO Box 181 Winifred, MT 59489
(406) 462-5425
OCLC, HeritageQuest, Courier Project, Statewide Databases



Garfield County Library

Noreen McKeever, Library Director
Garfield County
PO Box 69 Jordan, MT 59337
(406) 557-2297
Web Site: [garfieldcountylibrary.org](http://www.garfieldcountylibrary.org)
OCLC, HeritageQuest, Courier Project, Statewide Databases



George McCone Memorial County Library

Emmie Loberg, Library Director
McCone County
PO Box 49 Circle, MT 59215
(406) 485-2350
Web Site: [http://www.mcconelibrary.com/](http://www.mcconelibrary.com)
OCLC, HeritageQuest, Courier Project, Statewide Databases

Geraldine Branch Library

Bernadine Fairbanks, Branch Librarian
Chouteau County
PO Box 316 Geraldine, MT 59446
(406) 737-4331
Web Site: <http://www.chouteaucountylibrary.com>
[googlepages.com](http://www.google.com)
OCLC, Statewide Databases

Highwood School Community Library

Donna Buckley, Branch Librarian
Chouteau County
160 West Street South Highwood, MT 59442
(406) 733-2081
Web Site: <http://www.highwood.k12.mt.us>
Montana Shared Catalog, Statewide Databases

Hobson Community Library

Jeanne Lillegard, Library Director
Judith Basin County
210 Central Avenue Hobson, MT 59452
(406) 423-5453
Web Site: <http://www.hobsonlibrary.org>
OCLC, Statewide Databases



Judith Basin County Free Library

Jeanne Lillegard, Library Director
Judith Basin County
PO Box 486 Stanford, MT 59479
(406) 566-2277
Web Site: <http://www.judithbasinlibrary.com>
OCLC, HeritageQuest, Courier Project, Statewide Databases



Lewistown Public Library

KellyAnne Terry, Library Director
Fergus County
701 West Main Lewistown, MT 59457
(406) 538-5212
Web Site: <http://www.lewistownlibrary.org>
Catalog: <http://mtscprod.msl.mt.gov/uhtbin/cgisirsi/x/0/0/49>
Montana Shared Catalog, OCLC, MyMontanaLibrary2Go, HeritageQuest, Courier Project, Montana Memory Project Participant, Statewide Databases



Moore Public Library

Debbie Bauman, Library Director
Fergus County
PO Box 125 Moore, MT 59464
(406) 374-2364
OCLC, HeritageQuest, Courier Project, Statewide Databases



Petroleum County School-Community Library

Nancy Freburg, Library Director
Petroleum County
PO Box 188 Winnett, MT 59087
(406) 429-2451

Web Site: <http://www.midrivers.com/~pcclibrary>

Montana Shared Catalog, OCLC, HeritageQuest, Courier Project, Statewide Databases

School

Ayers Elementary

Susan Seastrand, Supervising Teacher/Librarian
Fergus County
PO Box 100 Grass Range, MT 59032
(406) 428-2368

OCLC, Statewide Databases

Benton Lake Elementary

Dawn Dawson, School Librarian
Chouteau County
17557 Bootlegger Trail Floweree, MT 59440
(406) 452-9023

OCLC, Statewide Databases

Benzien Elementary

Judy Miller, Supervising Teacher/Librarian
Garfield County
c/o Linda Rich Box 65 Sand Springs, MT 59077
(406) 557-6134

Statewide Databases

Big Dry Creek Elementary

Vickie Wahl, Supervising Teacher/Librarian
Garfield County
HC 69 Box 14 Sand Springs, MT 59077
(406) 557-2672

OCLC, Statewide Databases

Big Sandy Public Schools

Christine Locke, Librarian
Chouteau County
PO Box 570 Big Sandy, MT 59520
(406) 378-2501

Web Site: <http://bshs.ttc-cmc.net>

OCLC, Statewide Databases

Carter Elementary

Marjorie Scott, Supervising Teacher/Librarian
Chouteau County
PO Box 159 Carter, MT 59420
(406) 734-5389

OCLC, Statewide Databases

Circle Public Schools

Jeraldine Beiber, School Librarian
McCone County
PO Box 99 Circle, MT 59215
(406) 485-3600

OCLC, Statewide Databases

Cohagen Elementary

Jessica McWilliams, Teacher
Garfield County
PO Box 93 Cohagen, MT 59322
(406) 557-2838

OCLC, Statewide Databases

Deerfield Elementary

Traci Manseau, Supervising Teacher/Librarian
Fergus County
Route 3 Box 3139 Lewistown, MT 59457
(406) 538-7824

OCLC, Statewide Databases

Denton Public Schools

Shari Grubb, School Librarian
Fergus County
PO Box 1048 Denton, MT 59430
(406) 567-2370

OCLC, Statewide Databases

Fergus High School Library

Jeff Friesen, School Library Media Specialist
Fergus County
1001 Casino Creek Drive Lewistown, MT 59457
(406) 538-2321

Web Site: <http://fergus.lewistown.k12.mt.us/>

OCLC, Statewide Databases

Fort Benton Elementary School

Walleyne Flanagan, School Librarian
Chouteau County
PO Box 399 Fort Benton, MT 59442
(406) 622-3721

OCLC, Statewide Databases

Fort Benton Middle and H.S. Library

Carley Vielleux, School Library Media Specialist
Chouteau County
PO Box 399 Fort Benton, MT 59442
(406) 622-5112

OCLC, Statewide Databases

Geraldine Public Schools

Robyn Scribner, School Librarian
Chouteau County
PO Box 347 Geraldine, MT 59446
(406) 737-4371

Web Site: <http://www.geraldine.k12.mt.us>

OCLC, Statewide Databases

Geyser Public School

Noel Osterman, School Librarian
Judith Basin County
PO Box 70 Geyser, MT 59447
(406) 735-4368

OCLC, Statewide Databases

Grass Range School Library

Nancy Freburg, Library Director
Fergus County
PO Box 58 Grass Range, MT 59032
(406) 428-2122

OCLC, Statewide Databases

Highwood Public Schools

Kelly Maddock, Library Specialist
Chouteau County
160 West St. S Highwood, MT 59450
(406) 733-2081

Catalog: <http://mtscprod.msl.mt.gov/uhtbin/cgisirsi/x/0/0/49>

Montana Shared Catalog, OCLC, Statewide Databases

Hobson Public Schools

Sheila Herrin, School Librarian
Judith Basin County
PO Box 410 Hobson, MT 59452
(406) 423-5483

Web Site: <http://www.sheila.herrin.hobson.k12.mt.us>

OCLC, Statewide Databases

Jordan Public Schools

Karen Gibbs, Academy Director
Garfield County
PO Box 409 Jordan, MT 59337
(406) 557-2259

OCLC, Statewide Databases

Kester Elementary

Susan Schemmel, District Clerk
Garfield County
PO Box 338 Jordan, MT 59337
(406) 557-2334

OCLC, Statewide Databases

King Colony Elementary

Sandra Fox, Supervising Teacher/Librarian
Fergus County
2370 King Colony Road Lewistown, MT 59457
(406) 558-5797

OCLC, Statewide Databases

Lewistown Elementary Schools

Barbara Fradley, Library Media Specialist
Fergus County
215 7th Avenue South Lewistown, MT 59457
(406) 535-2811

Web Site: <http://bigspring.lewistown.k12.mt.us/>

OCLC, Statewide Databases

Lewistown Jr. High School

Barbara Fradley, Library Media Specialist
Fergus County
914 W Main Lewistown, MT 59457
(406) 535-5419

OCLC, Statewide Databases

Loma Elementary

Traci Kotthoff, Supervising Teacher/Librarian
Chouteau County
PO Box 185 Loma, MT 59460
(406) 739-4398

Statewide Databases

Moore Public Schools

Yvette Majerus, School Librarian
Fergus County
509 Highland Ave Moore, MT 59464
(406) 374-2231

Web Site: <http://moore.k12.mt.us>

OCLC, Statewide Databases

Pine Grove-Cap Rock Elementary

Rebecca Wilson, Supervising Teacher/Librarian
Garfield County
PO Box 39 Brusett, MT 59318
(406) 557-6181

OCLC, Statewide Databases

Raynesford Elementary

Nancy Hansen, Supervising Teacher/Librarian
Judith Basin County
PO Box 191 Raynesford, MT 59469
(406) 738-4385

OCLC, Statewide Databases

Ross Elementary (in Cat Creek)

Karla Christensen, Supervising Teacher/Librarian
Garfield County
HC 67 Box 5 c/o Browning Mosby, MT 59058
(406) 429-2645

OCLC, Statewide Databases

Roy Public Schools

Nancy Freburg, School Librarian
Fergus County
PO Box 9 Roy, MT 59471
(406) 464-2511

Web Site: <http://www.midrivers.com/~roy2>

OCLC, Statewide Databases

Southview Elementary Library

Sherry Haynie, Supervising Teacher/Librarian
McCone County
Route 1 Box 329 Vida, MT 59274
(406) 525-3719
Statewide Databases

Spring Creek Colony Elementary Library

Amy Talkington, Supervising Teacher/Librarian
Fergus County
PO Box 1185 Lewistown, MT 59457
(406) 538-5160
OCLC, Statewide Databases

Stanford Public Schools Library

Nancy Metcalfe, Librarian
Judith Basin County
PO Box 506 Stanford, MT 59479
(406) 566-2265
OCLC, Statewide Databases

Van Norman Elementary Library

Marisa Nelson, School Librarian
Garfield County
HC 63 Box 354 Jordan, MT 59337
(406) 557-6104
OCLC, Statewide Databases

Vida Elementary Library

Karla Wittmier, Supervising Teacher/Librarian
McCone County
PO Box 31 Vida, MT 59274
(406) 525-3374
OCLC, Statewide Databases

Warrick Elementary Library

Lia Payne, Supervising Teacher/Librarian
Chouteau County
29200 Warrick Road Big Sandy, MT 59520
(406) 386-2246
OCLC, Statewide Databases

Winifred Public Schools Library

Donna Cantu, School Librarian
Fergus County
PO Box 109 Winifred, MT 59489
(406) 462-5420
OCLC, Statewide Databases

Winnett School Library

Dianna Babcock, School Librarian
Petroleum County
PO Box 167 Winnett, MT 59087
(406) 429-2451
Statewide Databases

State of Montana Index

	Montana	United States	Rank in US
Geography			
Population per square mile 2000	6.2	79.6	49
Households 2000 (complete count)	358,667	105,480,101	44
Persons per household 2000 (complete count)	2.5	2.6	46
Resident Population			
Estimate (July 1) 2009	974,989	307,006,550	44
Estimate, percent change - April 1, 2000 to July 1, 2009	8.1	9.1	21
Total population estimate, net change - April 1, 2000 to July 1, 2009	72,799	25,581,948	40
April 1, 2000 (complete count)	902,195	281,421,906	44
Under 5 years (July 1 - estimate) 2009	62,438	21,299,656	43
Under 5 years, percent (July 1 - estimate) 2009	6.4	6.9	39
Under 18 years (July 1 - estimate) 2009	219,828	74,548,215	44
Under 18 years, percent (July 1 - estimate) 2009	22.5	24.3	40
65 years and over (July 1 - estimate) 2009	141,903	39,570,590	44
65 years and over, percent (July 1 - estimate) 2009	14.6	12.9	7
Total females, percent (July 1 - estimate) 2009	50.0	50.7	40
White alone (July 1 - estimate) 2009	880,107	244,298,393	43
Black alone (July 1 - estimate) 2009	7,282	39,641,060	50
American Indian and Alaska Native alone (July 1 - estimate) 2009	62,873	3,151,284	13
Asian alone (July 1 - estimate) 2009	6,810	14,013,954	49
Native Hawaiian and Other Pacific Islander alone (July 1 - estimate) 2009	707	578,353	42
Population 5 years and over, percent speaking language other than English at home, 2000	5.2	17.9	44
Civilian noninstitutionalized population, 5 years and over, with a disability 2000	145,732	49,746,248	44
Vital Statistics			
Births 2006	12,508	4,265,555	43
Deaths 2006	8,472	2,426,264	44
Infant deaths under one year 2006	73	28,527	48
Population 5 years and over by residence in 1995 - percent in same house, 2000 (sample)	53.6	54.1	32
Percent foreign born population 2000 (sample)	1.8	11.1	49
Education			
Educational attainment - persons 25 years and over - percent high school graduate or higher 2000	87.2	80.4	6
Educational attainment - persons 25 years and over - percent bachelors degree or higher 2000	24.4	24.4	22
Income/Poverty			
Per capita income in 1999	17,151	21,587	47
Median household income 2008	43,948	52,029	42
People of all ages in poverty - percent 2008	14	13	17
Personal income 2007	31,783	11,634,322	46
Per capita personal income 2007	33,225	38,615	40
Federal			
Federal Government expenditure - total FY 2008	8,842,960	2,771,782,152	46
Federal Government expenditure per capita FY 2008	9,141	9,116	22
Housing			
Housing unit estimates as of July 1, 2009	441,279	129,925,421	44
Housing unit estimates - net change, April 1, 2000 (base) to July 1, 2009	28,648	14,020,948	45
Housing unit estimates - percent change, April 1, 2000 (base) to July 1, 2009	6.9	12.1	40
Owner-occupied housing units - percent of total occupied housing units 2000 (complete count)	69.1	66.2	25
Median value of specified owner-occupied housing units 2000 (sample)	99,500	119,600	31
Housing units by units in structure - multiple units 2000 (sample)	15.7	26.4	43
New private housing units authorized by building permits - total 2009 (20,000-place universe)	1,686	582,963	47
Valuation of new private housing units authorized by building permits 2009 (20,000-place universe)	253,576	95,410,469	47
Employment/Business			
Civilian labor force 2009	498,907	154,142,000	44
Civilian labor force unemployment 2009	30,862	14,265,000	46
Civilian labor force unemployment rate 2009	6.2	9.3	47
Employment in all industries (NAICS, no code) 2007	647,427	180,943,800	44
Employment in all industries, net change 2000 - 2007	88,372	14,185,000	34
Employment in government (NAICS 92) 2007	93,107	24,257,000	45
Earnings in all industries (NAICS, no code) 2007	22,293,038	8,848,240,000	47
Earnings in all industries (NAICS, no code), average earnings per job 2007	34,433	48,900	51
Average travel time to work for workers 16 years and over not working at home 2000 (in minutes)	18	26	49
Private nonfarm establishments 2007	37,755	7,705,018	42
Private nonfarm employment for pay period including March 12, 2007	37,755	7,705,018	42
Private nonfarm employment for pay period including March 12, 2007, percent change 2000-2007	353,807.0	120,604,265.0	46
Nonemployer: total (NAICS 00) - establishments, 2007	83,999	21,708,021	43
Accommodation and Food Services: total (NAICS 72) - sales of establishments with payroll 2002	1,537,986	449,498,718	45
Total number of firms 2002	100,402	22,974,655	42
Manufacturing: total (NAICS 31-33) - value of shipments 2002	4,987,577	3,916,136,712	47
Wholesale trade: total (NAICS 42) - sales of establishments with payroll 2002	7,223,420	4,634,755,112	47
Retail trade: total (NAICS 44-45) - sales of establishments with payroll 2002	10,122,625	3,056,421,997	45
Retail trade: total (NAICS 44-45) - sales of establishments with payroll per capita 2002	11,116	10,615	17
Land in farms (NAICS) 2007 (acres) (adjusted)	61,388,462	922,095,840	2

Source: U.S. Census Bureau

Chouteau County Index

	County	Montana	Rank in MT
Geography			
Population per square mile 2000	1.5	6.2	42
Households 2000 (complete count)	2,226	358,667	33
Persons per household 2000 (complete count)	2.6	2.5	8
Resident Population			
Estimate (July 1) 2009	5,167	974,989	33
Estimate, percent change - April 1, 2000 to July 1, 2009	-13.5	8.1	49
Total population estimate, net change - April 1, 2000 to July 1, 2009	-803	72,799	53
April 1, 2000 (complete count)	5,970	902,195	33
Under 5 years (July 1 - estimate) 2009	239	62,438	35
Under 5 years, percent (July 1 - estimate) 2009	4.6	6.4	42
Under 18 years (July 1 - estimate) 2009	1,113	219,828	33
Under 18 years, percent (July 1 - estimate) 2009	21.5	22.5	28
65 years and over (July 1 - estimate) 2009	1,027	141,903	31
65 years and over, percent (July 1 - estimate) 2009	19.9	14.6	20
Total females, percent (July 1 - estimate) 2009	50.0	50.0	32
White alone (July 1 - estimate) 2009	4,224	880,107	34
Black alone (July 1 - estimate) 2009	5	7,282	38
American Indian and Alaska Native alone (July 1 - estimate) 2009	867	62,873	15
Asian alone (July 1 - estimate) 2009	16	6,810	35
Native Hawaiian and Other Pacific Islander alone (July 1 - estimate) 2009	6	707	14
Population 5 years and over, percent speaking language other than English at home, 2000	5	5	20
Civilian noninstitutionalized population, 5 years and over, with a disability 2000	864	145,732	34
Vital Statistics			
Births 2006	40	12,508	39
Deaths 2006	55	8,472	35
Infant deaths under one year 2006	1	73	26
Population 5 years and over by residence in 1995 - percent in same house, 2000 (sample)	64.4	53.6	23
Percent foreign born population 2000 (sample)	1.9	1.8	15
Education			
Educational attainment - persons 25 years and over - percent high school graduate or higher 2000	87.1	87.2	17
Educational attainment - persons 25 years and over - percent bachelors degree or higher 2000	20.5	24.4	19
Income/Poverty			
Per capita income in 1999	14,851	17,151	39
Median household income 2008	40,588	43,948	17
People of all ages in poverty - percent 2008	16	14	21
Personal income 2007	172	31,783	31
Per capita personal income 2007	32,753	33,225	16
Federal			
Federal Government expenditure - total FY 2008	69,380	8,842,960	15
Federal Government expenditure per capita FY 2008	13,278	9,141	15
Housing			
Housing unit estimates as of July 1, 2009	2,800	441,279	33
Housing unit estimates - net change, April 1, 2000 (base) to July 1, 2009	24	28,648	23
Housing unit estimates - percent change, April 1, 2000 (base) to July 1, 2009	0.9	6.9	21
Owner-occupied housing units - percent of total occupied housing units 2000 (complete count)	68.8	69.1	45
Median value of specified owner-occupied housing units 2000 (sample)	69,000	99,500	29
Housing units by units in structure - multiple units 2000 (sample)	5.2	15.7	43
New private housing units authorized by building permits - total 2009 (20,000-place universe)	0	1,686	48
Valuation of new private housing units authorized by building permits 2009 (20,000-place universe)	0	253,576	48
Employment/Business			
Civilian labor force 2009	2,586	498,907	32
Civilian labor force unemployment 2009	96	30,862	40
Civilian labor force unemployment rate 2009	3.7	6.2	50
Employment in all industries (NAICS, no code) 2007	3,087	647,427	34
Employment in all industries, net change 2000 - 2007	-86	88,372	53
Employment in government (NAICS 92) 2007	514	93,107	33
Earnings in all industries (NAICS, no code) 2007	88,791	22,293,038	35
Earnings in all industries (NAICS, no code), average earnings per job 2007	28,763	34,433	24
Average travel time to work for workers 16 years and over not working at home 2000 (in minutes)	19.7	17.7	18
Private nonfarm establishments 2007	157	37,755	34
Private nonfarm employment for pay period including March 12, 2007	157	37,755	34
Private nonfarm employment for pay period including March 12, 2007, percent change 2000-2007	785.0	353,807.0	40
Nonemployer: total (NAICS 00) - establishments, 2007	407	83,999	34
Accommodation and Food Services: total (NAICS 72) - sales of establishments with payroll 2002	2,590	1,537,986	38
Total number of firms 2002	515	100,402	34
Manufacturing: total (NAICS 31-33) - value of shipments 2002	0	4,987,577	35
Wholesale trade: total (NAICS 42) - sales of establishments with payroll 2002	29,767	7,223,420	19
Retail trade: total (NAICS 44-45) - sales of establishments with payroll 2002	24,741	10,122,625	37
Retail trade: total (NAICS 44-45) - sales of establishments with payroll per capita 2002	4,382	11,116	44
Land in farms (NAICS) 2007 (acres) (adjusted)	2,277,842	61,388,462	6

Source: U.S. Census Bureau

Fergus County Index

	County	Montana	Rank in MT
Geography			
Population per square mile 2000	2.7	6.2	29
Households 2000 (complete count)	4,860	358,667	13
Persons per household 2000 (complete count)	2.3	2.5	45
Resident Population			
Estimate (July 1) 2009	11,208	974,989	16
Estimate, percent change - April 1, 2000 to July 1, 2009	-5.8	8.1	37
Total population estimate, net change - April 1, 2000 to July 1, 2009	-685	72,799	52
April 1, 2000 (complete count)	11,893	902,195	15
Under 5 years (July 1 - estimate) 2009	589	62,438	19
Under 5 years, percent (July 1 - estimate) 2009	5.3	6.4	29
Under 18 years (July 1 - estimate) 2009	2,348	219,828	19
Under 18 years, percent (July 1 - estimate) 2009	20.9	22.5	30
65 years and over (July 1 - estimate) 2009	2,371	141,903	12
65 years and over, percent (July 1 - estimate) 2009	21.2	14.6	14
Total females, percent (July 1 - estimate) 2009	50.9	50.0	6
White alone (July 1 - estimate) 2009	10,745	880,107	15
Black alone (July 1 - estimate) 2009	93	7,282	11
American Indian and Alaska Native alone (July 1 - estimate) 2009	189	62,873	28
Asian alone (July 1 - estimate) 2009	28	6,810	25
Native Hawaiian and Other Pacific Islander alone (July 1 - estimate) 2009	0	707	44
Population 5 years and over, percent speaking language other than English at home, 2000	3	5	47
Civilian noninstitutionalized population, 5 years and over, with a disability 2000	2,041	145,732	18
Vital Statistics			
Births 2006	106	12,508	21
Deaths 2006	134	8,472	14
Infant deaths under one year 2006	1	73	16
Population 5 years and over by residence in 1995 - percent in same house, 2000 (sample)	59.3	53.6	32
Percent foreign born population 2000 (sample)	1.0	1.8	48
Education			
Educational attainment - persons 25 years and over - percent high school graduate or higher 2000	86.3	87.2	19
Educational attainment - persons 25 years and over - percent bachelors degree or higher 2000	19.1	24.4	22
Income/Poverty			
Per capita income in 1999	15,808	17,151	25
Median household income 2008	39,561	43,948	24
People of all ages in poverty - percent 2008	14	14	31
Personal income 2007	364	31,783	14
Per capita personal income 2007	32,585	33,225	19
Federal			
Federal Government expenditure - total FY 2008	110,127	8,842,960	53
Federal Government expenditure per capita FY 2008	9,837	9,141	29
Housing			
Housing unit estimates as of July 1, 2009	5,540	441,279	14
Housing unit estimates - net change, April 1, 2000 (base) to July 1, 2009	-18	28,648	52
Housing unit estimates - percent change, April 1, 2000 (base) to July 1, 2009	-0.3	6.9	39
Owner-occupied housing units - percent of total occupied housing units 2000 (complete count)	73.5	69.1	26
Median value of specified owner-occupied housing units 2000 (sample)	70,600	99,500	27
Housing units by units in structure - multiple units 2000 (sample)	11.2	15.7	22
New private housing units authorized by building permits - total 2009 (20,000-place universe)	1	1,686	29
Valuation of new private housing units authorized by building permits 2009 (20,000-place universe)	188	253,576	29
Employment/Business			
Civilian labor force 2009	6,008	498,907	14
Civilian labor force unemployment 2009	297	30,862	17
Civilian labor force unemployment rate 2009	4.9	6.2	30
Employment in all industries (NAICS, no code) 2007	7,915	647,427	13
Employment in all industries, net change 2000 - 2007	616	88,372	19
Employment in government (NAICS 92) 2007	1,066	93,107	18
Earnings in all industries (NAICS, no code) 2007	224,924	22,293,038	16
Earnings in all industries (NAICS, no code), average earnings per job 2007	28,417	34,433	25
Average travel time to work for workers 16 years and over not working at home 2000 (in minutes)	16.4	17.7	32
Private nonfarm establishments 2007	459	37,755	13
Private nonfarm employment for pay period including March 12, 2007	459	37,755	13
Private nonfarm employment for pay period including March 12, 2007, percent change 2000-2007	3,296.0	353,807.0	15
Nonemployer: total (NAICS 00) - establishments, 2007	1,065	83,999	14
Accommodation and Food Services: total (NAICS 72) - sales of establishments with payroll 2002	12,886	1,537,986	19
Total number of firms 2002	1,336	100,402	13
Manufacturing: total (NAICS 31-33) - value of shipments 2002	0	4,987,577	25
Wholesale trade: total (NAICS 42) - sales of establishments with payroll 2002	257,294	7,223,420	6
Retail trade: total (NAICS 44-45) - sales of establishments with payroll 2002	102,362	10,122,625	15
Retail trade: total (NAICS 44-45) - sales of establishments with payroll per capita 2002	8,762	11,116	15
Land in farms (NAICS) 2007 (acres) (adjusted)	2,446,047	61,388,462	3

Source: U.S. Census Bureau

Garfield County Index

	County	Montana	Rank in MT
Geography			
Population per square mile 2000	0.3	6.2	55
Households 2000 (complete count)	532	358,667	52
Persons per household 2000 (complete count)	2.4	2.5	38
Resident Population			
Estimate (July 1) 2009	1,173	974,989	51
Estimate, percent change - April 1, 2000 to July 1, 2009	-8.3	8.1	41
Total population estimate, net change - April 1, 2000 to July 1, 2009	-106	72,799	28
April 1, 2000 (complete count)	1,279	902,195	51
Under 5 years (July 1 - estimate) 2009	78	62,438	46
Under 5 years, percent (July 1 - estimate) 2009	6.6	6.4	16
Under 18 years (July 1 - estimate) 2009	281	219,828	51
Under 18 years, percent (July 1 - estimate) 2009	24.0	22.5	13
65 years and over (July 1 - estimate) 2009	212	141,903	53
65 years and over, percent (July 1 - estimate) 2009	18.1	14.6	31
Total females, percent (July 1 - estimate) 2009	47.3	50.0	53
White alone (July 1 - estimate) 2009	1,163	880,107	51
Black alone (July 1 - estimate) 2009	1	7,282	48
American Indian and Alaska Native alone (July 1 - estimate) 2009	6	62,873	52
Asian alone (July 1 - estimate) 2009	1	6,810	55
Native Hawaiian and Other Pacific Islander alone (July 1 - estimate) 2009	1	707	41
Population 5 years and over, percent speaking language other than English at home, 2000	2	5	53
Civilian noninstitutionalized population, 5 years and over, with a disability 2000	233	145,732	52
Vital Statistics			
Births 2006	19	12,508	44
Deaths 2006	11	8,472	53
Infant deaths under one year 2006	0	73	53
Population 5 years and over by residence in 1995 - percent in same house, 2000 (sample)	66.4	53.6	15
Percent foreign born population 2000 (sample)	1.1	1.8	41
Education			
Educational attainment - persons 25 years and over - percent high school graduate or higher 2000	84.7	87.2	27
Educational attainment - persons 25 years and over - percent bachelors degree or higher 2000	16.8	24.4	34
Income/Poverty			
Per capita income in 1999	13,930	17,151	47
Median household income 2008	35,585	43,948	41
People of all ages in poverty - percent 2008	15	14	27
Personal income 2007	33	31,783	51
Per capita personal income 2007	27,730	33,225	35
Federal			
Federal Government expenditure - total FY 2008	17,309	8,842,960	47
Federal Government expenditure per capita FY 2008	14,619	9,141	12
Housing			
Housing unit estimates as of July 1, 2009	960	441,279	50
Housing unit estimates - net change, April 1, 2000 (base) to July 1, 2009	-1	28,648	30
Housing unit estimates - percent change, April 1, 2000 (base) to July 1, 2009	-0.1	6.9	30
Owner-occupied housing units - percent of total occupied housing units 2000 (complete count)	73.7	69.1	24
Median value of specified owner-occupied housing units 2000 (sample)	34,700	99,500	55
Housing units by units in structure - multiple units 2000 (sample)	2.5	15.7	54
New private housing units authorized by building permits - total 2009 (20,000-place universe)	0	1,686	46
Valuation of new private housing units authorized by building permits 2009 (20,000-place universe)	0	253,576	46
Employment/Business			
Civilian labor force 2009	642	498,907	51
Civilian labor force unemployment 2009	22	30,862	53
Civilian labor force unemployment rate 2009	3.4	6.2	54
Employment in all industries (NAICS, no code) 2007	879	647,427	51
Employment in all industries, net change 2000 - 2007	20	88,372	45
Employment in government (NAICS 92) 2007	131	93,107	51
Earnings in all industries (NAICS, no code) 2007	18,506	22,293,038	50
Earnings in all industries (NAICS, no code), average earnings per job 2007	21,053	34,433	47
Average travel time to work for workers 16 years and over not working at home 2000 (in minutes)	13.2	17.7	48
Private nonfarm establishments 2007	32	37,755	51
Private nonfarm employment for pay period including March 12, 2007	32	37,755	51
Private nonfarm employment for pay period including March 12, 2007, percent change 2000-2007	174.0	353,807.0	51
Nonemployer: total (NAICS 00) - establishments, 2007	122	83,999	50
Accommodation and Food Services: total (NAICS 72) - sales of establishments with payroll 2002	781	1,537,986	48
Total number of firms 2002	143	100,402	50
Manufacturing: total (NAICS 31-33) - value of shipments 2002	0	4,987,577	50
Wholesale trade: total (NAICS 42) - sales of establishments with payroll 2002	0	7,223,420	50
Retail trade: total (NAICS 44-45) - sales of establishments with payroll 2002	5,718	10,122,625	49
Retail trade: total (NAICS 44-45) - sales of establishments with payroll per capita 2002	4,593	11,116	41
Land in farms (NAICS) 2007 (acres) (adjusted)	2,391,958	61,388,462	4

Source: U.S. Census Bureau

Judith Basin County Index

	County	Montana	Rank in MT
Geography			
Population per square mile 2000	1.2	6.2	46
Households 2000 (complete count)	951	358,667	43
Persons per household 2000 (complete count)	2.5	2.5	24
Resident Population			
Estimate (July 1) 2009	2,051	974,989	43
Estimate, percent change - April 1, 2000 to July 1, 2009	-11.9	8.1	48
Total population estimate, net change - April 1, 2000 to July 1, 2009	-278	72,799	39
April 1, 2000 (complete count)	2,329	902,195	43
Under 5 years (July 1 - estimate) 2009	82	62,438	45
Under 5 years, percent (July 1 - estimate) 2009	4.0	6.4	50
Under 18 years (July 1 - estimate) 2009	410	219,828	44
Under 18 years, percent (July 1 - estimate) 2009	20.0	22.5	41
65 years and over (July 1 - estimate) 2009	429	141,903	43
65 years and over, percent (July 1 - estimate) 2009	20.9	14.6	17
Total females, percent (July 1 - estimate) 2009	48.7	50.0	47
White alone (July 1 - estimate) 2009	2,018	880,107	43
Black alone (July 1 - estimate) 2009	1	7,282	46
American Indian and Alaska Native alone (July 1 - estimate) 2009	9	62,873	49
Asian alone (July 1 - estimate) 2009	2	6,810	51
Native Hawaiian and Other Pacific Islander alone (July 1 - estimate) 2009	0	707	52
Population 5 years and over, percent speaking language other than English at home, 2000	9	5	9
Civilian noninstitutionalized population, 5 years and over, with a disability 2000	380	145,732	44
Vital Statistics			
Births 2006	14	12,508	46
Deaths 2006	20	8,472	45
Infant deaths under one year 2006	0	73	45
Population 5 years and over by residence in 1995 - percent in same house, 2000 (sample)	68.2	53.6	10
Percent foreign born population 2000 (sample)	1.4	1.8	30
Education			
Educational attainment - persons 25 years and over - percent high school graduate or higher 2000	87.6	87.2	11
Educational attainment - persons 25 years and over - percent bachelors degree or higher 2000	23.6	24.4	9
Income/Poverty			
Per capita income in 1999	14,291	17,151	45
Median household income 2008	37,033	43,948	36
People of all ages in poverty - percent 2008	15	14	28
Personal income 2007	56	31,783	45
Per capita personal income 2007	27,633	33,225	36
Federal			
Federal Government expenditure - total FY 2008	31,098	8,842,960	34
Federal Government expenditure per capita FY 2008	15,441	9,141	9
Housing			
Housing unit estimates as of July 1, 2009	1,318	441,279	44
Housing unit estimates - net change, April 1, 2000 (base) to July 1, 2009	-7	28,648	40
Housing unit estimates - percent change, April 1, 2000 (base) to July 1, 2009	-0.5	6.9	41
Owner-occupied housing units - percent of total occupied housing units 2000 (complete count)	77.1	69.1	9
Median value of specified owner-occupied housing units 2000 (sample)	56,700	99,500	43
Housing units by units in structure - multiple units 2000 (sample)	2.7	15.7	53
New private housing units authorized by building permits - total 2009 (20,000-place universe)	0	1,686	54
Valuation of new private housing units authorized by building permits 2009 (20,000-place universe)	0	253,576	54
Employment/Business			
Civilian labor force 2009	1,052	498,907	43
Civilian labor force unemployment 2009	51	30,862	45
Civilian labor force unemployment rate 2009	4.8	6.2	32
Employment in all industries (NAICS, no code) 2007	1,117	647,427	49
Employment in all industries, net change 2000 - 2007	-148	88,372	55
Employment in government (NAICS 92) 2007	213	93,107	43
Earnings in all industries (NAICS, no code) 2007	22,580	22,293,038	48
Earnings in all industries (NAICS, no code), average earnings per job 2007	20,215	34,433	50
Average travel time to work for workers 16 years and over not working at home 2000 (in minutes)	17.5	17.7	28
Private nonfarm establishments 2007	53	37,755	49
Private nonfarm employment for pay period including March 12, 2007	53	37,755	49
Private nonfarm employment for pay period including March 12, 2007, percent change 2000-2007	188.0	353,807.0	50
Nonemployer: total (NAICS 00) - establishments, 2007	200	83,999	43
Accommodation and Food Services: total (NAICS 72) - sales of establishments with payroll 2002	1,369	1,537,986	45
Total number of firms 2002	230	100,402	43
Manufacturing: total (NAICS 31-33) - value of shipments 2002	0	4,987,577	43
Wholesale trade: total (NAICS 42) - sales of establishments with payroll 2002	11,223	7,223,420	29
Retail trade: total (NAICS 44-45) - sales of establishments with payroll 2002	4,127	10,122,625	52
Retail trade: total (NAICS 44-45) - sales of establishments with payroll per capita 2002	1,829	11,116	54
Land in farms (NAICS) 2007 (acres) (adjusted)	838,477	61,388,462	32

Source: U.S. Census Bureau

McCone County Index

	County	Montana	Rank in MT
Geography			
Population per square mile 2000	0.7	6.2	51
Households 2000 (complete count)	810	358,667	47
Persons per household 2000 (complete count)	2.4	2.5	26
Resident Population			
Estimate (July 1) 2009	1,624	974,989	49
Estimate, percent change - April 1, 2000 to July 1, 2009	-17.9	8.1	53
Total population estimate, net change - April 1, 2000 to July 1, 2009	-353	72,799	42
April 1, 2000 (complete count)	1,977	902,195	47
Under 5 years (July 1 - estimate) 2009	75	62,438	48
Under 5 years, percent (July 1 - estimate) 2009	4.6	6.4	43
Under 18 years (July 1 - estimate) 2009	363	219,828	46
Under 18 years, percent (July 1 - estimate) 2009	22.4	22.5	25
65 years and over (July 1 - estimate) 2009	322	141,903	49
65 years and over, percent (July 1 - estimate) 2009	19.8	14.6	22
Total females, percent (July 1 - estimate) 2009	50.2	50.0	24
White alone (July 1 - estimate) 2009	1,558	880,107	49
Black alone (July 1 - estimate) 2009	6	7,282	36
American Indian and Alaska Native alone (July 1 - estimate) 2009	31	62,873	42
Asian alone (July 1 - estimate) 2009	6	6,810	43
Native Hawaiian and Other Pacific Islander alone (July 1 - estimate) 2009	0	707	48
Population 5 years and over, percent speaking language other than English at home, 2000	2	5	55
Civilian noninstitutionalized population, 5 years and over, with a disability 2000	299	145,732	48
Vital Statistics			
Births 2006	14	12,508	47
Deaths 2006	17	8,472	49
Infant deaths under one year 2006	0	73	49
Population 5 years and over by residence in 1995 - percent in same house, 2000 (sample)	72.6	53.6	4
Percent foreign born population 2000 (sample)	0.7	1.8	53
Education			
Educational attainment - persons 25 years and over - percent high school graduate or higher 2000	86.1	87.2	21
Educational attainment - persons 25 years and over - percent bachelors degree or higher 2000	16.4	24.4	38
Income/Poverty			
Per capita income in 1999	15,162	17,151	33
Median household income 2008	37,576	43,948	33
People of all ages in poverty - percent 2008	12	14	43
Personal income 2007	43	31,783	48
Per capita personal income 2007	24,857	33,225	49
Federal			
Federal Government expenditure - total FY 2008	26,249	8,842,960	37
Federal Government expenditure per capita FY 2008	15,662	9,141	8
Housing			
Housing unit estimates as of July 1, 2009	1,077	441,279	47
Housing unit estimates - net change, April 1, 2000 (base) to July 1, 2009	-10	28,648	46
Housing unit estimates - percent change, April 1, 2000 (base) to July 1, 2009	-0.9	6.9	52
Owner-occupied housing units - percent of total occupied housing units 2000 (complete count)	78.0	69.1	5
Median value of specified owner-occupied housing units 2000 (sample)	42,600	99,500	51
Housing units by units in structure - multiple units 2000 (sample)	5.1	15.7	44
New private housing units authorized by building permits - total 2009 (20,000-place universe)	1	1,686	31
Valuation of new private housing units authorized by building permits 2009 (20,000-place universe)	200	253,576	28
Employment/Business			
Civilian labor force 2009	1,006	498,907	45
Civilian labor force unemployment 2009	30	30,862	47
Civilian labor force unemployment rate 2009	3.0	6.2	55
Employment in all industries (NAICS, no code) 2007	1,297	647,427	44
Employment in all industries, net change 2000 - 2007	90	88,372	34
Employment in government (NAICS 92) 2007	189	93,107	46
Earnings in all industries (NAICS, no code) 2007	27,412	22,293,038	45
Earnings in all industries (NAICS, no code), average earnings per job 2007	21,135	34,433	46
Average travel time to work for workers 16 years and over not working at home 2000 (in minutes)	15.1	17.7	38
Private nonfarm establishments 2007	54	37,755	48
Private nonfarm employment for pay period including March 12, 2007	54	37,755	48
Private nonfarm employment for pay period including March 12, 2007, percent change 2000-2007	356.0	353,807.0	44
Nonemployer: total (NAICS 00) - establishments, 2007	142	83,999	49
Accommodation and Food Services: total (NAICS 72) - sales of establishments with payroll 2002	522	1,537,986	50
Total number of firms 2002	181	100,402	48
Manufacturing: total (NAICS 31-33) - value of shipments 2002	0	4,987,577	48
Wholesale trade: total (NAICS 42) - sales of establishments with payroll 2002	0	7,223,420	48
Retail trade: total (NAICS 44-45) - sales of establishments with payroll 2002	11,488	10,122,625	46
Retail trade: total (NAICS 44-45) - sales of establishments with payroll per capita 2002	6,237	11,116	31
Land in farms (NAICS) 2007 (acres) (adjusted)	1,506,824	61,388,462	15

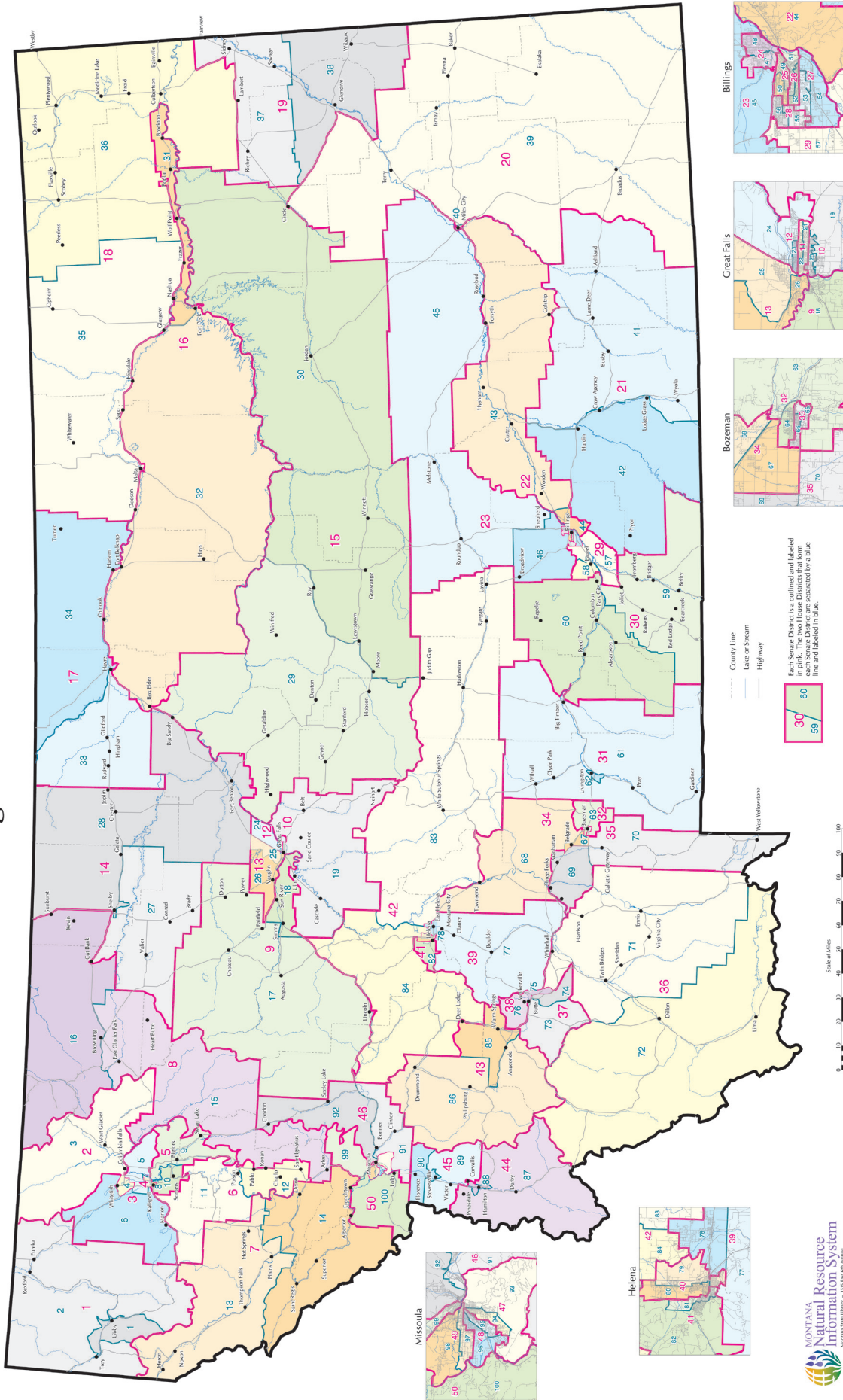
Source: U.S. Census Bureau

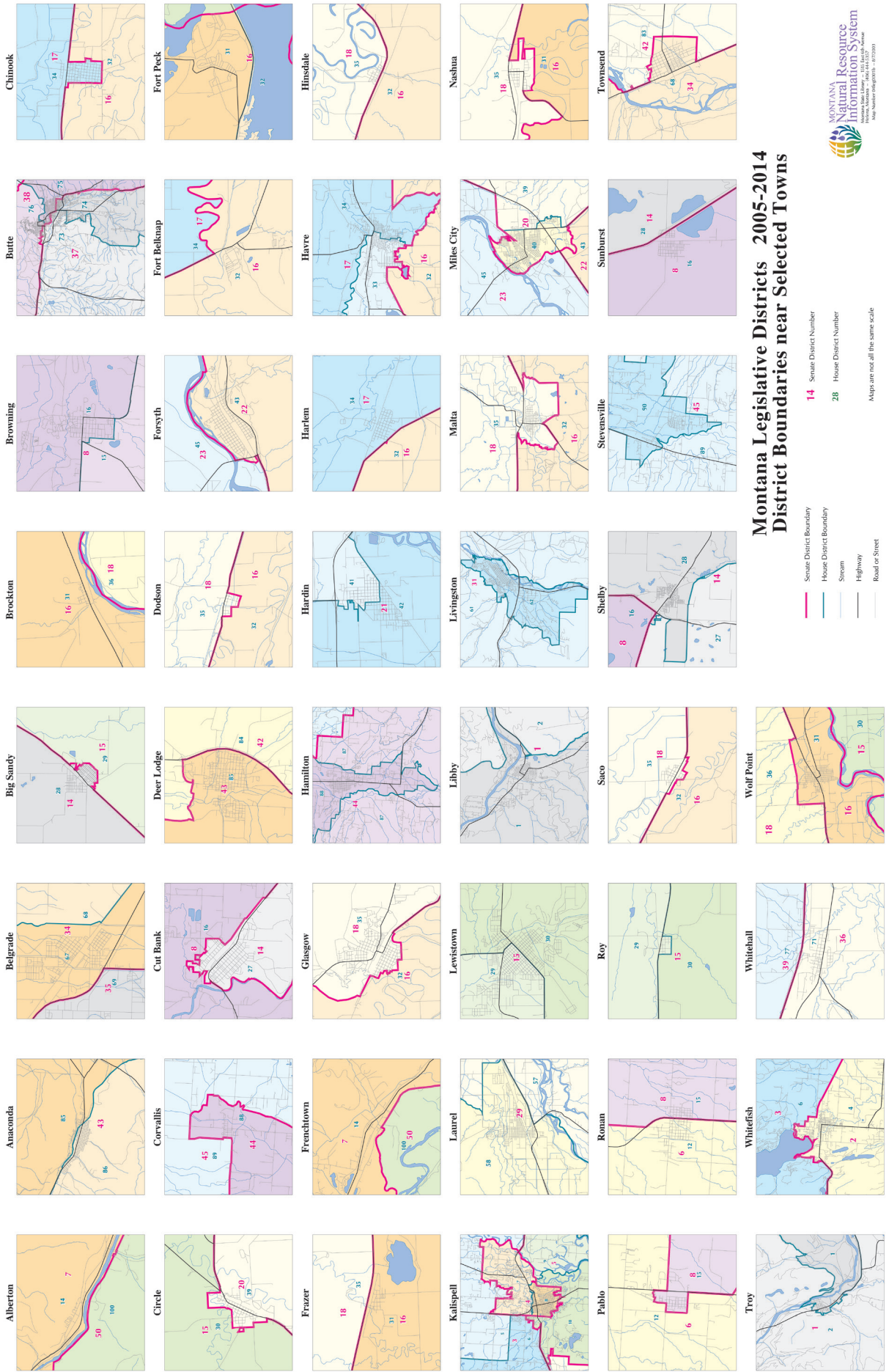
Petroleum County Index

	County	Montana	Rank in MT
Geography			
Population per square mile 2000	0.3	6.2	56
Households 2000 (complete count)	211	358,667	56
Persons per household 2000 (complete count)	2.3	2.5	44
Resident Population			
Estimate (July 1) 2009	440	974,989	56
Estimate, percent change - April 1, 2000 to July 1, 2009	-10.8	8.1	45
Total population estimate, net change - April 1, 2000 to July 1, 2009	-53	72,799	25
April 1, 2000 (complete count)	493	902,195	56
Under 5 years (July 1 - estimate) 2009	18	62,438	56
Under 5 years, percent (July 1 - estimate) 2009	4.1	6.4	49
Under 18 years (July 1 - estimate) 2009	77	219,828	56
Under 18 years, percent (July 1 - estimate) 2009	17.5	22.5	52
65 years and over (July 1 - estimate) 2009	94	141,903	56
65 years and over, percent (July 1 - estimate) 2009	21.4	14.6	12
Total females, percent (July 1 - estimate) 2009	47.0	50.0	54
White alone (July 1 - estimate) 2009	434	880,107	56
Black alone (July 1 - estimate) 2009	0	7,282	56
American Indian and Alaska Native alone (July 1 - estimate) 2009	3	62,873	56
Asian alone (July 1 - estimate) 2009	0	6,810	56
Native Hawaiian and Other Pacific Islander alone (July 1 - estimate) 2009	0	707	56
Population 5 years and over, percent speaking language other than English at home, 2000	6	5	16
Civilian noninstitutionalized population, 5 years and over, with a disability 2000	76	145,732	56
Vital Statistics			
Births 2006	6	12,508	54
Deaths 2006	4	8,472	56
Infant deaths under one year 2006	0	73	56
Population 5 years and over by residence in 1995 - percent in same house, 2000 (sample)	65.8	53.6	16
Percent foreign born population 2000 (sample)	0.6	1.8	55
Education			
Educational attainment - persons 25 years and over - percent high school graduate or higher 2000	82.9	87.2	38
Educational attainment - persons 25 years and over - percent bachelors degree or higher 2000	17.4	24.4	30
Income/Poverty			
Per capita income in 1999	15,986	17,151	23
Median household income 2008	31,243	43,948	53
People of all ages in poverty - percent 2008	17	14	20
Personal income 2007	11	31,783	56
Per capita personal income 2007	25,159	33,225	47
Federal			
Federal Government expenditure - total FY 2008	8,826	8,842,960	6
Federal Government expenditure per capita FY 2008	20,243	9,141	3
Housing			
Housing unit estimates as of July 1, 2009	291	441,279	56
Housing unit estimates - net change, April 1, 2000 (base) to July 1, 2009	-1	28,648	31
Housing unit estimates - percent change, April 1, 2000 (base) to July 1, 2009	-0.3	6.9	35
Owner-occupied housing units - percent of total occupied housing units 2000 (complete count)	74.4	69.1	20
Median value of specified owner-occupied housing units 2000 (sample)	58,300	99,500	41
Housing units by units in structure - multiple units 2000 (sample)	2.1	15.7	55
New private housing units authorized by building permits - total 2009 (20,000-place universe)	0	1,686	56
Valuation of new private housing units authorized by building permits 2009 (20,000-place universe)	0	253,576	56
Employment/Business			
Civilian labor force 2009	237	498,907	56
Civilian labor force unemployment 2009	11	30,862	56
Civilian labor force unemployment rate 2009	4.6	6.2	36
Employment in all industries (NAICS, no code) 2007	356	647,427	56
Employment in all industries, net change 2000 - 2007	58	88,372	37
Employment in government (NAICS 92) 2007	65	93,107	56
Earnings in all industries (NAICS, no code) 2007	6,355	22,293,038	56
Earnings in all industries (NAICS, no code), average earnings per job 2007	17,851	34,433	52
Average travel time to work for workers 16 years and over not working at home 2000 (in minutes)	11.7	17.7	56
Private nonfarm establishments 2007	13	37,755	56
Private nonfarm employment for pay period including March 12, 2007	13	37,755	56
Private nonfarm employment for pay period including March 12, 2007, percent change 2000-2007	42.0	353,807.0	55
Nonemployer: total (NAICS 00) - establishments, 2007	37	83,999	56
Accommodation and Food Services: total (NAICS 72) - sales of establishments with payroll 2002	363	1,537,986	52
Total number of firms 2002	46	100,402	56
Manufacturing: total (NAICS 31-33) - value of shipments 2002	0	4,987,577	56
Wholesale trade: total (NAICS 42) - sales of establishments with payroll 2002	0	7,223,420	56
Retail trade: total (NAICS 44-45) - sales of establishments with payroll 2002	0	10,122,625	56
Retail trade: total (NAICS 44-45) - sales of establishments with payroll per capita 2002	0	11,116	56
Land in farms (NAICS) 2007 (acres) (adjusted)	640,707	61,388,462	42

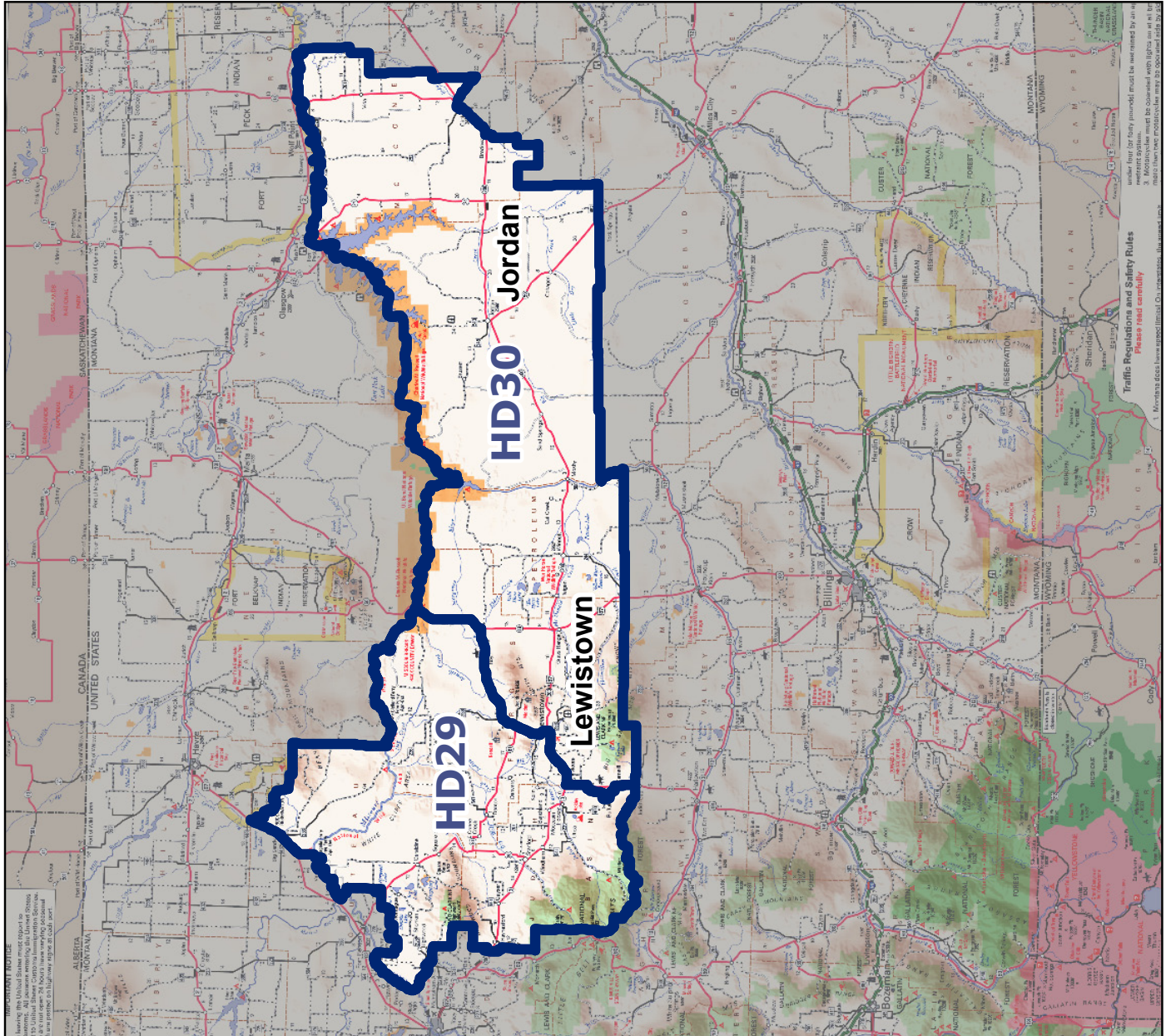
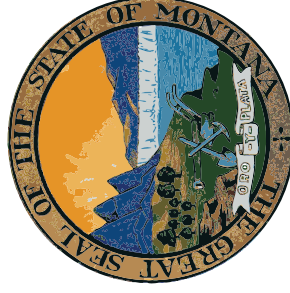
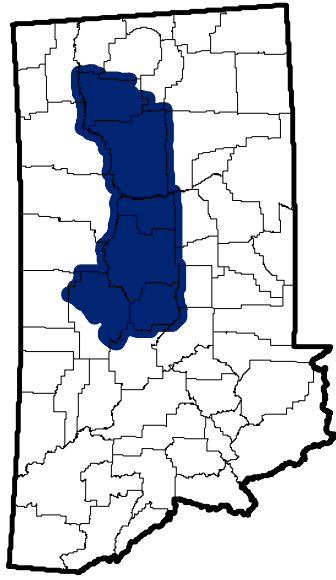
Source: U.S. Census Bureau

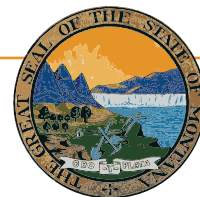
Montana Legislative Districts 2005-2014





Montana Senate District 15





Montana State Library

1515 East 6th Avenue
PO Box 201800
Helena, MT 59620
(406) 444-3115

<http://msl.mt.gov>

Statewide Library Resources

- **Montana Shared Catalog**
- **Montana Library Directory**

<http://mymontanalibrary.org>

http://msl.mt.gov/For_Librarians/Library_Directory

Montana State Digital Library

- **Library Information Services**
 - Archive Montana
 - Montana State Publications Online
 - Request or submit State Publications
 - Montana State Library catalog
 - Online Magazines & Journals
 - Research Databases
- **Natural Resource Information System**
 - Montana GIS Portal
 - Maps and Geographic Information
 - Montana Digital Atlas/Map Gallery
 - Water Information
- **Natural Heritage Program**
 - Montana Field Guide
 - Natural Heritage Tracker
 - Species of Concern Reports - Animals
 - Species of Concern Reports - Plants
 - Map Viewer

<http://archive.msl.mt.gov>

<http://statepublications.mt.gov>

http://msl.mt.gov/for_state_employees/State_Publications

<http://msl.mt.gov/msc>

http://msl.mt.gov/for_state_employees/journals.asp

http://msl.mt.gov/For_State_Employees/Find_Resources_Online/

<http://nris.mt.gov>

<http://gisportal.mt.gov/>

<http://nris.mt.gov/gis>

<http://nris.mt.gov/interactive.html>

<http://nris.mt.gov/wis>

<http://mtnhp.org/>

<http://fieldguide.mt.gov/>

<http://mtnhp.org/Tracker>

<http://mtnhp.org/SpeciesOfConcern/?AorP=a>

<http://mtnhp.org/SpeciesOfConcern/?AorP=p>

<http://mtnhp.org/mapviewer/>

Montana Talking Book Library

- On-line catalogs and services – WebOpac
WebBraille

http://msl.mt.gov/talking_book_library

<http://www.klasweb.msl.mt.gov>

Montana State Library In-House Partners

- **Montana Base Map Service Center**
- **Montana Fish, Wildlife & Parks**
- **Natural Resources Conservation Service**

<http://giscoordination.mt.gov/>

<http://fwp.mt.gov>

<http://www.mt.nrcs.usda.gov/>

Legislative Snapshot

http://msl.mt.gov/legislative_snapshot/