

Legislative Snapshot 2009

Includes information for the State of Montana,
Senate District 28, and House Districts 55 and 56.

http://msl.mt.gov/legislative_snapshot/



Senate District 28

Senator Jeff Essmann (R)

PO Box 80945

Billings, MT 59108-0945



House District 55

Representative Cary Smith (R)

5522 Billy Casper Dr

Billings, MT 59106-1029

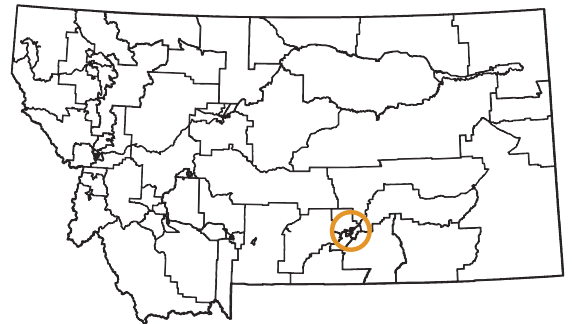
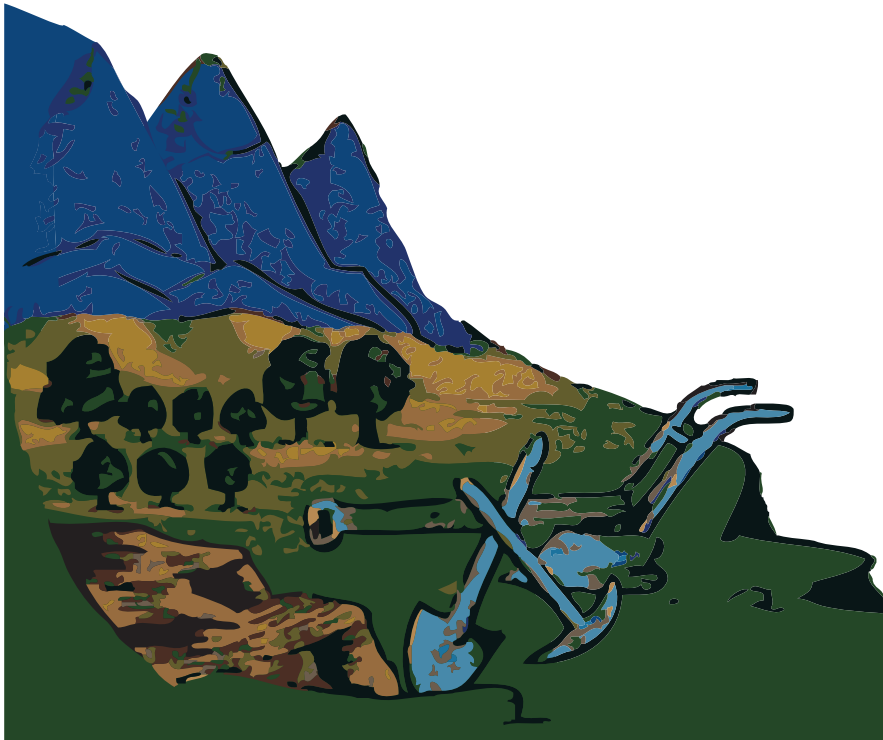


House District 56

Representative Don Roberts (R)

5414 Walter Hagen Dr

Billings, MT 59106-1007



Letter from the Montana State Librarian

On behalf of the Montana State Library, I would like to welcome you to the 2009 legislative session. Our information experts have compiled this booklet to be a resource to you as you take on the important work of representing the collective needs of all Montanans and the special needs of your district during this legislative session.

As in past editions, we have included a wide range of information that, after reviewing proposed bills and following national and state trends through various mediums, we believe will likely be major themes in this legislative session. To that end, you will find up-to-the-minute information on our state's economy, energy production and development, and land and water use. Education is always an important issue, and you will find relevant information on our state's public schools and test scores, as well as on the libraries that help to augment what our schools do. Fire and drought have continued to ravage certain parts of Montana, and you will be able to take a look at the most current information available on maps created here at the State Library. Finally, wildlife and recreation will always be an important part of Montana life, and we've pulled several highlights from our collection that might help to guide your decision-making this session.

The Montana State Library is a small and very unique agency. We employ not only librarians, but GIS specialists and cartographers and partner with botanists and zoologists, as well as federal and state agencies. We manage an enormous collection of state publications, as we simultaneously work to ensure that Montana's blind and physically disabled have access to reading materials and information.

We created this book for you to demonstrate the power of what a diverse staff with amazingly diverse skills can do to make information in many different forms available to every Montanan. We are very proud of what we do here at the State Library as we work to empower Montanans by providing access to information, enhancing learning in families and communities, and building 21st Century skills.

We hope that you use this book throughout the session and stop by to see us – in person or virtually. Whether you visit us at our facility or online, you will be able to browse our collection of government information, get help researching a specific issue, or find a quiet place to work or meet with colleagues. We are located one block east of the Capitol, behind the Historical Society, at the north end of the Justice building. And of course, our services are available 24 hours a day, seven days a week at <http://msl.mt.gov>.

Sincerely,



Darlene Staffeldt
Montana State Librarian



Senate District 28 House District 55 House District 56

Table of Contents

- 2 Recent Performance of the Montana Economy and its Industries
- 6 Montana Notable Rankings
- 7 Demographics
- 8 Education
- 9 Libraries
- 11 Land
- 12 Water
- 13 Fire and Drought
- 14 Energy, Mines
- 15 Wildlife and Recreation

Appendices

- i Library Directory
- iv State of Montana Index

Senate District 28 County Indexes

- v Yellowstone County

Maps

- vi Legislative Districts
- viii Senate District 28

Recent Performance of the Montana Economy and its Industries

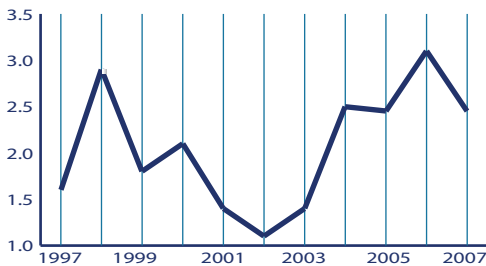
Source: Montana Department of Labor, Research and Analysis Bureau

Montana has been outperforming the nation in terms of employment growth, wage growth, and unemployment since 2001. Montana's unemployment rate fell below the national rate in 2001 and has remained lower ever since. Montana's annual unemployment rate in 2007 was the 8th lowest in the nation.

Montana's economy has also outperformed the nation in terms of employment growth. Over the 1997-2007 time period, employment in Montana grew at an annual compounding growth rate of 2.1% compared to a national rate of only 1.1%. Job growth in Montana has been speeding up in recent years. Employment grew at a compounding rate of 2.4% annually over 2002-2007, then at a compounding rate of 2.8% annually from 2005-2007.



Montana Change in Total Employment



Source: Quarterly Census of Employment and Wages (QCEW) Program

Average wages in Montana have also been on the rise, outpacing both inflation and the national average since 2005. Increasing real wages are good news for workers and businesses alike. Workers can increase their standard of living, while businesses benefit because workers have more money to buy goods and services.

There is not one particular industry that was responsible for the recent economic growth in Montana – all industries have been experiencing growth. The following paragraphs examine the performance of Montana's industries in recent years using the Bureau of Economic Analysis (BEA) data for state Gross Domestic Product (GDP), employment, and personal income earnings from work. The BEA data includes an estimate of

employment and earnings for business owners in addition to payroll workers.

Government, which includes federal, state, and local government and school districts, is an important part of the Montana economy. Government is the largest employer in the state, totaling 14.6% of the jobs in the state. Government constitutes 15.6% of the state's GDP and provides 22% of the state's personal income earned from work. While the GDP and personal income attributed to government work has grown at about 5.5% per year since 2004, employment in this industry has not increased. Government employment has a 0% growth rate since 2004.

As for private industry, the Montana economy can be divided into three categories based on their roles in the economy: base industries, consumer-based industries, and business-support industries. Base industries bring new money into Montana

through exports and can drive growth in other industries through this increase in wealth. In Montana, the base industries are generally natural-resource-based and include agriculture, wood products, manufacturing, energy, and the mining of metals, oil and gas, coal, and other substances. Tourism is also partially a base industry to the extent that it brings new money into Montana, although many of the state's tourists come from within the state. Although employment in base industries is not large, base industries usually pay higher wages than other industries,

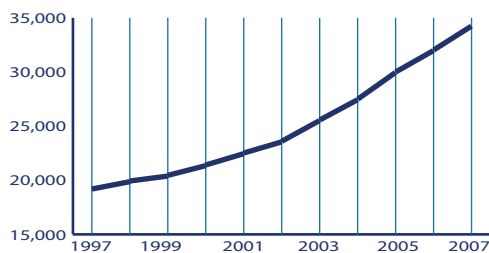
2007 Montana Annual Employment Averages

| | Units | | Employed | |
|--|--------|------------------|----------|------------------|
| | Count | Change from 2006 | Count | Change from 2006 |
| Total All Industries | 42,386 | 3.4 | 436,695 | 2.5 |
| Total Private | 40,177 | 3.4 | 356,765 | 3.0 |
| Agriculture, Forestry, Fishing & Hunting | 950 | 1.2 | 4,532 | 2.3 |
| Mining | 410 | 8.2 | 7,474 | 2.4 |
| Utilities | 233 | 0.9 | 3,045 | 2.6 |
| Construction | 6,359 | 5.7 | 32,286 | 7.0 |
| Manufacturing | 1,381 | 0.7 | 20,437 | 1.3 |
| Wholesale Trade | 2,286 | 3.0 | 16,938 | 2.5 |
| Retail Trade | 4,816 | 1.3 | 58,388 | 4.0 |
| Transportation And Warehousing | 1,304 | 4.3 | 11,017 | 2.1 |
| Information | 783 | 1.8 | 7,621 | -1.5 |
| Finance And Insurance | 2,059 | 6.4 | 15,556 | -2.5 |
| Real Estate And Rental And Leasing | 1,823 | 5.1 | 6,027 | -0.4 |
| Professional And Technical Services | 4,097 | 3.9 | 19,004 | 2.3 |
| Management Of Companies And Enterprises | 113 | 18.9 | 1,438 | 17.7 |
| Administrative And Waste Services | 2,001 | 5.9 | 20,264 | 11.3 |
| Educational Services | 398 | 5.9 | 4,080 | -0.4 |
| Health Care And Social Assistance | 3,171 | 4.5 | 54,270 | 2.2 |
| Arts, Entertainment, And Recreation | 1,225 | 4.2 | 11,425 | 5.6 |
| Accommodation And Food Services | 3,276 | -0.8 | 46,738 | 1.7 |
| Other Services | 3,310 | 1.0 | 15,980 | 0.9 |
| Total Government | 2,210 | 3.8 | 79,931 | 0.0 |

Source: Department of Labor and Industry, Research and Analysis Bureau

making these jobs contribute more to personal income and GDP growth than other jobs. The industries of farming, forestry, mining, utilities, and manufacturing made up 11.8% of the employment in Montana, but 13.3% of personal income and 17.1% of the state's GDP in 2006.

Montana Historical Gross Domestic Product (GDP)
(millions of current dollars)



Source: U.S. Department of Commerce, Bureau of Economic Analysis

Of these base industries, mining has been the fastest growing industry for GDP in Montana in recent years, largely because of increased prices for metals, oil, gas, and energy. Mining represents 6.8% of the state's GDP, but has a growth rate of 24% over the 2005 to 2007 period. Mining employs 1.4% of workers in Montana, and has a growth rate for employment of 7% from 2004 to 2006.

While the natural-resource-based industries have traditionally been the driver of the Montana economy, consumer- and service-based industries are becoming increasingly important, particularly in the fast-growing Western portion of Montana. Consumer-based industries are industries where growth depends on an increase in population or income, such as construction, retail, health care, or entertainment. Continued growth in these industries relies on continued population and wage growth.

Consumer-based industries tend to be large employers, but usually pay lower wages because of a predominance of lower-skilled jobs. For example, retail trade is the largest private industry in Montana for employment, employing over 75,000 workers. However, many of the jobs in the retail industries are low-skilled and low-wage. The consumer-based industries of real estate, construction, health care, education, retail, accommodation, services,

and entertainment comprise 52.7% of the employment in Montana, and produce 41.4% of the state's GDP and 40.6% of the personal income from work earnings in 2006.

In recent years, real estate and construction have played large roles in the growth of Montana's economy. Real estate is the largest private industry in the production of state GDP, representing 10.7% of the state's GDP. The real estate industry has experienced a GDP growth rate of 4.8% over the last two years – slower than the industry average. Construction was the fastest growing employer, adding 10.3% of jobs from 2004-2006 and comprising 8.5% of Montana's jobs in 2006. However, these two industries have been impacted by the national slowdown in housing and will likely experience slower growth in the upcoming years.

The health care industry continues to grow in importance in the Montana economy. After government and retail trade, health care is the third largest industry in terms of employment, with 10.1% of Montana's workers within the industry. Health care provides 11.9% of the state's earnings from work and 8.9% of the state's GDP.



Montana Employment Projections Top 20 Fastest Growing Industries

| | Industry | 2006 | 2016 | Change | % Change | Growth Rate % |
|----|---|---------|---------|--------|----------|---------------|
| | Total, All Industries | 523,362 | 621,092 | 97,730 | 18.7 | 1.7 |
| 1 | Total Self-Employed and Unpaid Family Workers | 95,014 | 104,375 | 9,361 | 9.9 | 0.9 |
| 2 | Self-employed workers, primary job | 94,516 | 103,929 | 9,413 | 10 | 1 |
| 3 | Education and Health Services | 94,512 | 112,973 | 18,461 | 19.5 | 1.8 |
| 4 | Trade, Transportation and Utilities | 89,848 | 105,889 | 16,041 | 17.9 | 1.7 |
| 5 | Goods-Producing Domain | 64,295 | 78,564 | 14,269 | 22.2 | 2 |
| 6 | Leisure and Hospitality | 57,267 | 70,306 | 13,039 | 22.8 | 2.1 |
| 7 | Retail Trade | 56,234 | 67,011 | 10,777 | 19.2 | 1.8 |
| 8 | Health Care and Social Assistance | 55,986 | 68,858 | 12,872 | 23 | 2.1 |
| 9 | Accommodation and Food Services | 45,976 | 55,220 | 9,244 | 20.1 | 1.8 |
| 10 | Educational Services | 38,526 | 44,115 | 5,589 | 14.5 | 1.4 |
| 11 | Professional and Business Services | 38,246 | 52,874 | 14,628 | 38.2 | 3.3 |
| 12 | Public Administration | 37,609 | 40,759 | 3,150 | 8.4 | 0.8 |
| 13 | Total, All Government | 37,609 | 40,759 | 3,150 | 8.4 | 0.8 |
| 14 | Food Services and Drinking Places | 35,331 | 41,979 | 6,648 | 18.8 | 1.7 |
| 15 | Construction | 32,392 | 42,888 | 10,496 | 32.4 | 2.8 |
| 16 | Financial Activities | 22,413 | 26,741 | 4,328 | 19.3 | 1.8 |
| 17 | Hospitals | 21,939 | 25,976 | 4,037 | 18.4 | 1.7 |
| 18 | Manufacturing | 20,171 | 21,063 | 892 | 4.4 | 0.4 |
| 19 | Professional and Technical Services | 18,795 | 25,007 | 6,212 | 33.1 | 2.9 |
| 20 | Administrative and Waste Services | 18,229 | 26,044 | 7,815 | 42.9 | 3.6 |

Source: Department of Labor and Industry, Research and Analysis Bureau

Finally, the third industry category is business support industries, which require a nexus of economic activity to prosper. Business support industries, such as transportation and warehousing, wholesale, management of companies, administrative and waste services, depend on the growth of other industries. Continuing either amenity-driven population growth or economic growth will allow business support industries to prosper. Business support industries comprise 20.8% of Montana's employment, 25.5% of the state's GDP, and 24.2% of personal income from work earnings.

With the recent economic growth, business support industries are some of the fastest growing in the state. The GDP produced by the state's management of companies industry grew at the second fastest rate during 2005-2007 (20.6% annually), followed by administration and waste services with the third fastest growth (15.9% annually). These industries remain small and together comprise only 2.6% of the state's GDP.

In summary, the Montana economy remains fairly reliant on traditional natural-

resource-based industries, particularly mining, to bring in new money into the state. In recent years, consumer-based and service industries have been increasingly important, and now represent the majority of the state's employment. These consumer-based industries rely on amenity-driven population growth and wage growth for continued prosperity. Finally, the business support industries depend on a nexus of population and industry, and have prospered in the rapid economic growth in recent years. All of these industries are interconnected and rely on each other for success.

Challenges to the Montana Economy

National Economic Concerns

During 2006 and 2007, the Montana economy experienced above-average growth in both employment and wages. Using the Quarterly Census of Employment and Wages, payroll employment grew at a rate of 2.5% from 2006 to 2007, with wages growing at a rate of 5.3%.

Following this rapid expansion, a national economic slowdown has impacted the Montana economy during 2008. Montana job growth has been low since the start of 2008, particularly when compared to the rapid growth in previous years. The unemployment rate has increased over one percent since the start of the year. The wood products industry, an important base industry in the Northwestern portion of Montana, has felt the worst impacts. Construction and financial services have also experienced slowdowns, particularly in comparison to the rapid growth in these industries in previous years.

Montana, however, has not been affected by the national slowdown as much as other states. Using unadjusted data on payroll jobs through the first half of 2008, Montana is ranked the third fastest growing state in the U.S. with 5.9% growth in payroll jobs. Alaska and Wyoming are first and second, which indicates that agriculture and oil and gas industries are likely playing a stabilizing role in the economies of these two states and in Montana. High commodity prices for agricultural and energy products encourage growth in

these industries and also help employment in other industries through spillover effects.

Due to more responsible lending and borrowing practices and a strong economy, Montana home prices have remained fairly stable in comparison to other states. According to the Office of Federal Housing Enterprise Oversight, Montana home prices



have risen 3.38% over the year ending June 30, 2008. This increase makes Montana the 8th highest state in the nation for home price increases in the last year. Joining Montana on the top ten list are Wyoming, South Dakota, and North Dakota, whose economies have also been fairly stable in comparison to the rest of the nation.

Regionally, Montana's economic performance is similar to our neighbors, with all of Montana's surrounding states experiencing unemployment increases during 2008. Idaho has experienced the greatest change in its unemployment rate during 2008, followed by Montana and Wyoming, then by the Dakotas. The impact of the national recession is greatest in areas like Idaho and Northwestern Montana that are heavily reliant on the wood products industry, with diminishing effects in agricultural and energy-producing areas.

Aging Workforce

A longer-term challenge for the Montana economy is our aging workforce. According to the U.S. Census Bureau's population projections, the percentage of the Montana population that will be over the age of 65 is expected to reach 25% by 2030, making Montana one of the oldest states in the nation. The aging of our population will likely have obvious impacts on our economy, such as increased demand for health care, greater demand for the arts, and changes in state spending for both education and Medicare.

The aging of the population will also cause significant tightening of Montana's labor force. Again using the U.S. Census Bureau's population projections, the working age population in Montana (ages 18-65) will start to decrease starting in 2014. Without changes to the traditional workplace, Montana businesses may start to experience difficulty finding appropriately trained workers. To meet future job demands, businesses will need to start looking for workers in populations that traditionally have lower workforce participation, such as older workers, women with children, minorities, or non-high school completers. To recruit these workers, businesses will likely need to offer more flexible hours, worker training, or a different mix of benefits than what is traditionally provided. The aging of the Montana population will likely drive changes in Montana's education system as well. There will be fewer young people graduating from Montana high schools and more non-traditional students in the Montana University System. The tightening labor force will likely also increase demand for short-term training programs that allow workers to quickly update their skills for emerging technologies. For example, an

Census 2000 Age and Sex by District

| | Montana | Senate District 28 | House District 55 | House District 56 |
|--|---------|--------------------|-------------------|-------------------|
| Total Population | 902,195 | 18,022 | 8,831 | 9,191 |
| Percent of Population, Under 18 Years | 25.5 | 23.5 | 23.8 | 23.3 |
| Percent of Population, 18 to 24 Years | 9.5 | 6.5 | 7.2 | 5.9 |
| Percent of Population, 25 to 44 Years | 27.2 | 24.9 | 27.1 | 22.8 |
| Percent of Population, 45 to 64 Years | 24.4 | 24.5 | 22.1 | 26.7 |
| Percent of Population, 65 Years and Over | 13.4 | 20.6 | 19.9 | 21.3 |
| Median Age (Years) | 37.5 | 41.9 | 39.7 | 43.8 |

Source: U.S. Census Bureau

electrician may need a general background, but will also need short-term training to refine his skills in order to build a wind turbine. Businesses may feel the need to take greater responsibility for job training in order to meet their labor demands, but will likely rely on the state education system to provide standards and certifications.

Regional Imbalance

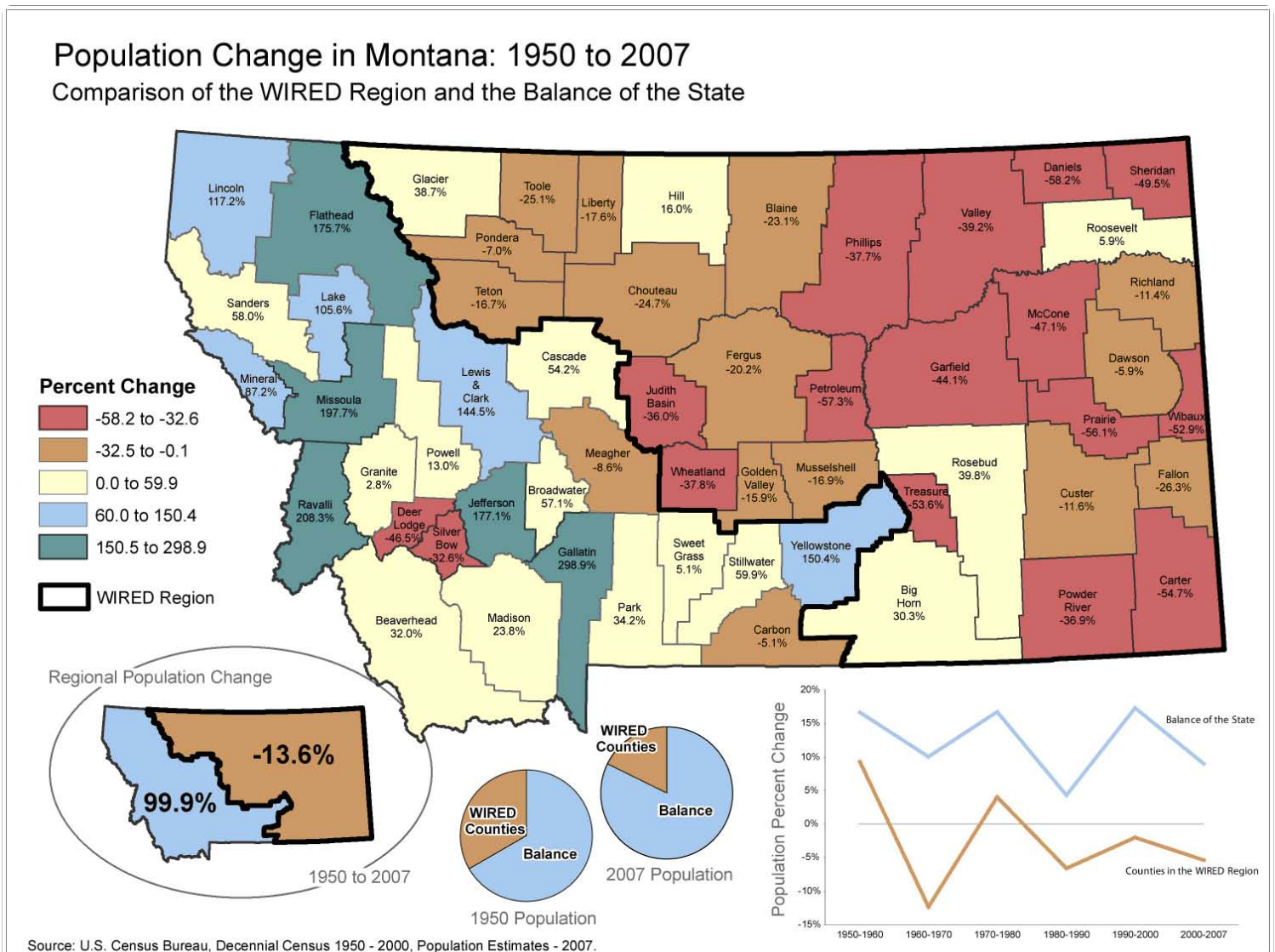
Finally, Montana's economy continues to have regional disparities in prosperity and population growth. Montana remains a fairly rural state, with a population density of 6.5 people per square mile compared to 84.5 people per square mile for the nation (U.S. Census Bureau). In recent years, the population growth in Montana has accelerated, but this population growth

is largely limited to the urban centers and the western portion of Montana. The following map, produced by the Census and Economic Information Center at the Montana Department of Commerce, compares the population change since 1950 in Montana's Workforce Innovation in Regional Economic Development (WIRED) region compared to the balance of the state. The WIRED region is a labor force area designated by the U.S. Department of Labor to receive funding to integrate economic and workforce development. The WIRED region is used here because it includes 32 counties and six Indian Reservations in Eastern and North Central Montana that have been experiencing long-term population and economic declines. Since 1950, the WIRED region has lost 13.6% of

its population; in comparison, the balance of Montana has experienced a population increase of 99.9%. As shown in the graphic below, the population declines are greater in the counties that are further east.

The pattern of population growth (and also economic growth) has also been termed 'the cowboy boot' economy by Governor Brian Schweitzer. Governor Schweitzer's boot economy includes the fast-growing counties of Flathead, Lake, Missoula, Lewis and Clark, Jefferson, Gallatin, and Yellowstone, but also roughly follows the pattern of the WIRED and non-wired counties.

The disparity in population growth between the eastern and western



September 2008 - WIREDPopChange.mxd

portions of the state (or urban or rural, or cowboy-boot or non-boot) has resulted in economic disparities as well. Employment growth in recent years in the nation and in Montana has been driven by consumer-based industries that rely on population increases for economic growth. For example, consumer-based industries in Montana added almost 28,000 jobs to the Montana economy during the 2002 to 2007 period, while natural resource industries only added 3,200 jobs.

The lack of consumer-driven industries in the eastern portion of the state has resulted in slow employment growth. Over the 1990-2007 period, the annual compounding rate of job growth in the WIRED region of Eastern and North Central Montana was -0.3% compared to positive growth of 1.8% in the non-WIRED Western and urban counties. The regional disparity also is evident in wages. The average wage

per job in the WIRED region in 2007 was \$29,200, while the average wage across the full state was \$32,200. However, the rapid growth in the energy industry has provided hope to reverse these fortunes in the eastern portion of the state in recent years. In fact, wages in the WIRED region have grown at a faster rate than wages in Montana as a whole during the 2000-2007 time period (a compounding annual growth rate of 4.6% compared to 4.1%), despite having slower job growth in the WIRED region, likely due to the addition of high-paying energy jobs.

In summary, Montana has large disparity in the economic performance in various areas of the state. The urban centers have experienced strong economic growth, but the rural areas still lag behind in wages and employment. Montana likely will continue to face challenges related to the uneven economic prosperity across the state.



Montana Notable Rankings

| | US | Montana | Rank in US |
|--|--------|---------|------------|
| Median age, 2006 | 36.4 | 39.2 | 7 |
| Unemployment rate, April 2008 | 4.6 | 3.8 | 14 |
| Percentage change in home prices, 2005 - 2006 | 5.59 | 10.2 | 8 |
| Percentage of grandparents responsible for their grandchildren | 40.5 | 46.5 | 22 |
| Percentage of households with one or more people 65 years and over, 2006 | 23.2 | 24.4 | 11 |
| Percentage of children under 6 years old with all parents in the labor force, 2006 | 61.6 | 62.0 | 31 |
| Percentage of people 25 years and over who have completed high school (includes equivalency), 2006 | 84.1 | 90.1 | 4 |
| Percentage of people 16 to 64 years who are in the labor force (including Armed Forces), 2006 | 74.5 | 76.0 | 23 |
| Median monthly housing costs for renter-occupied housing units (dollars), 2006 | 763 | 571 | 46 |
| Percent of housing units that were built in 1939 or earlier, 2006 | 14.6 | 18.0 | 22 |
| Median earnings for full-time, year-round workers (in 2006 inflation-adjusted dollars), 2006 | 32,649 | 26,007 | 49 |
| Median earnings for full-time, year-round workers (in 2006 inflation-adjusted dollars), 2006 | 42,210 | 36,378 | 48 |
| Percentage of civilian population 18 years and over who are veterans, 2006 | 10.4 | 14.2 | 2 |



- 2.8% of Montanans walk to work, well above the national average.
- Montana ranked 2nd for the percentage of state parks, recreation areas, and natural areas.
- 14% of Montana's civilian population are veterans, placing Montana second in the nation.
- Montana ranked 4th for the percentage of the population 25 and older who graduated from high school.
- Montana has the 4th lowest average travel time to work of any US state.
- Montana ranks 7th in electricity generated from renewable resources.
- Montana residential customers have the 7th lowest electric bill.

Demographics

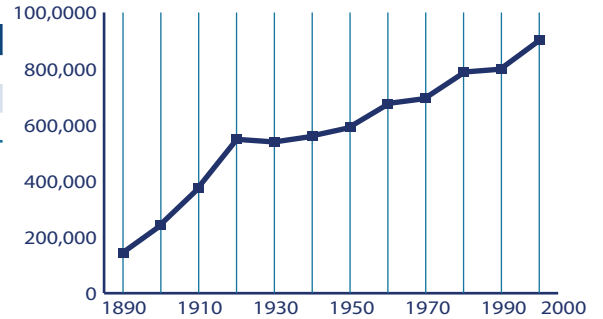
Population Growth in Montana and Selected Counties

Montana's population density is about 6.3 persons per square mile.

| | 2000 Census | 2007 Estimate | Percent Growth |
|--------------------|-------------|---------------|----------------|
| United States | 281,421,906 | 301,621,157 | .07 |
| Montana | 902,195 | 957,861 | .06 |
| Yellowstone County | 129,352 | 139,936 | 8.18 |

Source: U.S. Census Bureau

Montana Historic Population Growth 1890 - 2000 Censes



Source: U.S. Census Bureau Population

Household Income and Poverty Figures for 2005

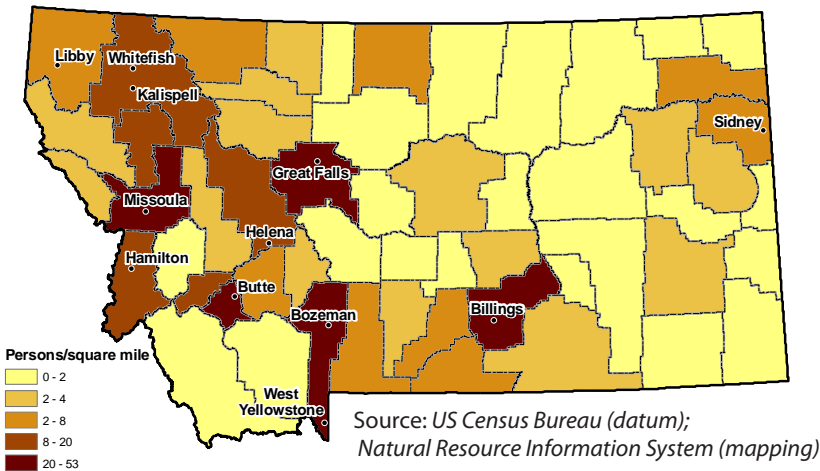
Montana ranked 42nd among all U.S. states for median income in 2005.

| | Median Household Income | % in Poverty All Ages | % in Poverty Ages < 18 |
|--------------------|-------------------------|-----------------------|------------------------|
| United States | 46,242 | 13.3 | 18.5 |
| Montana | 38,503 | 14.6 | 20.2 |
| Yellowstone County | 41,171 | 13.0 | 17.4 |

Source: U.S. Census Bureau



2007 Population Density Estimates - Total Persons



2007 Population Estimates

| | Montana |
|-------------------|----------------|
| Male | 479,633 |
| Under 18 years | 112,664 |
| 18 to 64 years | 306,876 |
| 18 years and over | 366,969 |
| 21 years and over | 346,707 |
| 62 years and over | 75,218 |
| 65 years and over | 60,093 |
| Female | 478,228 |
| Under 18 years | 106,834 |
| 18 to 64 years | 297,909 |
| 18 years and over | 371,394 |
| 21 years and over | 353,066 |
| 62 years and over | 88,126 |
| 65 years and over | 73,485 |
| Total | 957,861 |

Source: US Census Bureau, Population Estimates Program

Housing Units for Selected Counties

According to the U.S. Census Bureau, the total number of housing units in Montana increased 4.7% during this period.

| | 2000 | 2001 | 2002 | 2003 | 2004 | 2005 | 2006 | 2007 | Percent Change (2000 - 2007) |
|--------------------|--------|--------|--------|--------|--------|--------|--------|--------|------------------------------|
| Yellowstone County | 54,563 | 55,100 | 55,550 | 56,143 | 56,891 | 57,735 | 58,206 | 58,737 | 7.65 |

Source: U.S. Census Bureau

Education

Schools in Senate District 28

There are 828 public K-12 and 14 private accredited schools in Montana. Montana also has 21 public and 3 private colleges. Senate and House district figures in the table below show the number of schools located in cities within 10 miles of the district's boundaries.

| | Montana | Senate District 28 | House District 55 | House District 56 |
|----------------|------------|--------------------|-------------------|-------------------|
| High Schools | 171 | 49 | 49 | 42 |
| Middle Schools | 213 | 105 | 105 | 98 |
| Elementaries | 444 | 434 | 434 | 420 |
| Total | 828 | 588 | 588 | 560 |

Source: Office of Public Instruction Website, November 2009

Montana School Size and Enrollment 2007 - 2008

| School Size | Percent of Schools | Enrollment | Percent of Enrollment |
|--------------|--------------------|----------------|-----------------------|
| >500 | 6 | 45,133 | 31 |
| 250 to 499 | 20 | 55,441 | 39 |
| 100 to 249 | 20 | 26,287 | 18 |
| 50 to 99 | 15 | 9,152 | 6 |
| <50 | 39 | 7,392 | 5 |
| Total | 100 | 143,405 | 100 |

Source: Office of Public Instruction, September 2008

School Districts - Percentage of in Area

The following table shows the number of school districts with the appropriate percentages in each area. None of the elementary or high school districts have 100% of their area contained within the boundaries of Senate District 28.

| | Senate District 28 | | House District 55 | | House District 56 | |
|----------------|--------------------|-------------|-------------------|-------------|-------------------|-------------|
| | Elementary | High School | Elementary | High School | Elementary | High School |
| 0 to 9.999 % | 2 | 1 | 2 | 1 | 1 | 1 |
| 10 to 29.999 % | 0 | 0 | 0 | 0 | 0 | 0 |
| 30 to 49.999 % | 0 | 0 | 0 | 0 | 0 | 0 |
| 50 to 69.999 % | 0 | 0 | 0 | 0 | 0 | 0 |
| 70 to 89.999 % | 0 | 0 | 0 | 0 | 0 | 0 |
| 90 to 99.999 % | 0 | 0 | 0 | 0 | 0 | 0 |
| 100 % | 0 | 0 | 0 | 0 | 0 | 0 |
| Total | 2 | 1 | 2 | 1 | 1 | 1 |

Source: Montana State Library, June 2004

Education Statistics

The data listed below is taken from the 2000 census. Senate and House districts shown are based on the current geographic boundaries thanks to Montana's cooperation with the U.S. Census Bureau.

| | Montana | Senate District 28 | House District 55 | House District 56 |
|---|---------|--------------------|-------------------|-------------------|
| Population 5 years and over, Percent who speak a language other than English at home, Total, 2000 | 5.2 | 3.5 | 2.9 | 4.1 |
| Population 5 years and over, Percent who speak a language other than English at home, And speak English less than "very well", 2000 | 1.5 | 0.7 | 0.6 | 0.7 |
| Population enrolled in elementary or high school, Percent in private school, 2000 | 7.0 | 10.7 | 10.3 | 11.1 |
| Population, 16 to 19 years, Percent not enrolled in school and not a high school graduate, 2000 | 8.0 | 5.1 | 7.2 | 3.1 |
| Population 18 to 24 years, Percent enrolled in college or graduate school, 2000 | 33.8 | 25.9 | 24.7 | 27.8 |
| Population 25 years and over, Percent with less than a 9th grade education, 2000 | 4.3 | 3.3 | 3.1 | 3.4 |
| Population 25 years and over, Percent high school graduate or higher, 2000 | 87.2 | 92.5 | 91.3 | 93.7 |
| Population 25 years and over, Percent with bachelors degree or higher, 2000 | 24.4 | 38.7 | 30.1 | 47.1 |
| Population 25 to 34 years, Percent with bachelors degree or higher, 2000 | 26.6 | 40.4 | 40.4 | 40.5 |

Source: U.S. Census Bureau

National Assessment of Education (NAEP) Progress Historical Performance in Montana Schools

| Subject | Grade | Year | State Average | National Average |
|----------------------------|-------|-------------------|---------------|------------------|
| Mathematics (scale: 0-500) | 4 | 1996 ⁿ | 228 | 222 |
| | | 2000 | 228 | 224 |
| | | 2003 | 236 | 234 |
| | | 2005 | 241 | 237 |
| | | 2007 | 244 | 239 |
| | 8 | 1990 ⁿ | 280 | 262 |
| | | 1996 ⁿ | 283 | 271 |
| | | 2000 | 285 | 272 |
| | | 2003 | 286 | 276 |
| | | 2005 | 286 | 278 |
| | | 2007 | 287 | 280 |
| Reading (scale: 0-500) | 4 | 1994 ⁿ | 222 | 212 |
| | | 1998 | 225 | 213 |
| | | 2002 | 224 | 217 |
| | | 2003 | 223 | 216 |
| | | 2005 | 225 | 217 |
| | 8 | 2007 | 227 | 220 |
| | | 1998 | 271 | 261 |
| | | 2002 | 270 | 263 |
| | | 2003 | 270 | 261 |
| | | 2005 | 269 | 260 |
| | | 2007 | 271 | 261 |
| Science (scale: 0-300) | 4 | 2000 | 160 | 145 |
| | | 2005 | 160 | 149 |
| | 8 | 1996 ⁿ | 162 | 148 |
| | | 2000 | 164 | 148 |
| | | 2005 | 162 | 147 |
| Writing (scale: 0-300) | 4 | 2002 | 149 | 153 |
| | | 1998 | 150 | 148 |
| | 8 | 2002 | 152 | 152 |
| | | 2007 | 157 | 154 |

ⁿ Accommodations were not permitted for this assessment

Source: National Center for Education Statistics



Libraries

There are 750 libraries in Montana. Senate and House district figures in the table below show the number of libraries located in cities within 10 miles of the district's boundaries. For more detailed information on Montana's libraries visit http://www.msl.mt.gov/For_Librarians/Library_Directory/.

Source: *Montana State Library, December 2008.*

| | Montana | Senate District 28 | House District 55 | House District 56 |
|------------------|------------|--------------------|-------------------|-------------------|
| Public | 80 | 3 | 2 | 1 |
| Branches | 29 | 0 | 0 | 0 |
| Bookmobiles | 3 | 2 | 1 | 1 |
| School | 558 | 94 | 48 | 46 |
| Academic | 28 | 6 | 3 | 3 |
| Special or Other | 52 | 8 | 8 | 8 |
| Total | 750 | 121 | 62 | 59 |

Montana Public Libraries Fast Facts

- **Montana's public libraries hold 3,286,044 items.**
- Montanans visited their public libraries an average of four times throughout the year, for a total of 3,934,580 visits in 2007.
- Montana library patrons checked out 5,606,250 items in 2007, about 6 items per person.
- Librarians in Montana's public libraries fielded 401,180 reference questions in SFY 2007, or 7,715 questions per week.
- 100% of all Montana libraries provide Internet access to patrons
- **Nearly half of all Montanans (424,188) have a library card.**

Montana Talking Book Library

Montana residents who are unable to use standard print materials due to visual, physical and/or reading disabilities may be eligible to borrow recorded books and playback equipment from the Montana Talking Book Library. Eligibility is determined based on National Library Service Standards. Currently, 3,712 Montanans are registered to use this free service.

*All services are provided **FREE** of charge to eligible patrons!*



Talking Book Library volunteers demonstrate the Twin Vision Braille Program.

Source: *Montana Talking Book Library*

Collection

- 67,000+ fiction and non-fiction audio book titles in all genres for all ages
- 80+ audio, Braille, large print and electronic magazines
- 300+ descriptive videos
- 200+ children's Twin Vision books
- Newsline™ telephone audio newspaper service
- Access to Montana Radio Reading newspaper service

**To apply for these FREE services, contact:
(800)-332-3400 Toll Free in Montana
(406) 444-2064 Helena**

Cooperative Free Book Loan Service

- Access to all audio book titles recorded in over 80 regional and sub-regional libraries of the National Library Service

Local Recording and Twin Vision Braille Programs

- Two studios work constantly to record Montana books, magazines, and many other fiction and non-fiction titles. Over 200 Twin Vision (print and illustrated) children's books have been embossed with Braille text.

Online Services

- WebOpac allows users to search the local recording catalog, order items on line and then have them mailed to their door.
- Through WebBraille patrons can download digital Braille books
- The Digital Download Pilot Project allows patrons to download digital audio books. In 2009 the National Library Service (NLS) will unveil its free digital player for use with this service.

Partnerships

- All Montana Public, Academic and Special libraries
- Other organizations include: ophthalmologists, optometrists, Lions Clubs, Blind and Low Vision and Vocational Rehabilitation Services, Low Vision Montana, Blind Support Groups, Veterans facilities, Montana Independent Living Programs, Montana Association for the Blind, as well as all local and national organizations promoting independence to Montanans with visual, physical, and reading handicaps.

Readers' Advisor and Referral Services

- Trained employees conduct book searches to assist patrons in their reading needs and desires. Research is also done for patrons with special needs and appropriate formats are found and referred to the patron for materials needed.

Senate and House district figures in the table below show the number of patrons located in cities within 10 miles of the district's boundaries.

| | Montana | Senate District 28 | House District 55 | House District 56 |
|----------------------------|---------|--------------------|-------------------|-------------------|
| Total Patrons | 3,076 | 436 | 436 | 404 |
| Veterans Who Are Patrons | 258 | 24 | 24 | 22 |
| Patron Count by Disability | | | | |
| Blindness | 945 | 127 | 127 | 122 |
| Low Vision | 1,435 | 225 | 225 | 200 |
| Physical | 267 | 33 | 33 | 32 |
| Reading | 435 | 54 | 54 | 53 |

Source: *Montana Talking Book Library*

Statewide Library Resources

Statewide Library Resources

Statewide Databases



Subscription databases available to all Montana libraries include the Gale Cengage Learning's suite of periodical databases and Ebsco's Auto and Small Engine Repair, Environment Complete and CINAHL, a resource for nursing students.

OCLC



OCLC, Online Computer Library Center, is a nonprofit, membership, computer library service and research organization dedicated to the public purposes of furthering access to the world's information and reducing information costs.

Ask Montana

A free online service for information and research help provided by librarians in Montana and around the world. Since July of 2004 the service has answered more than 4,300 questions.



<http://askmontana.org/>

MontanaLibrary2Go

This service offers library patrons from participating libraries a substantial, continually growing collection of audio, video and music titles from OverDrive, Inc. Content is available for download to personal playing devices.

HeritageQuest

This subscription genealogy database is accessible by all Montana public library patrons and staff. It provides a collection of unique material for both genealogical and historical researchers, with coverage dating back to the late 1700s.

Montana Memory Project

The Montana Memory Project provides access to digital collections and items relating to Montana's cultural heritage and government.



Source: *Montana Historical Society Photo Archive, Montana Memory Project*

Participating Libraries

Senate and House district figures in the table below show the number of libraries located in cities within 10 miles of the district's boundaries.

| | Montana | Senate District 28 | House District 55 | House District 56 |
|------------------------|---------|--------------------|-------------------|-------------------|
| Statewide Databases | 750 | 62 | 62 | 59 |
| OCLC | 249 | 40 | 40 | 39 |
| Ask Montana | 20 | 3 | 3 | 3 |
| MontanaLibrary2Go | 21 | 1 | 1 | 1 |
| HeritageQuest | 80 | 2 | 2 | 1 |
| Montana Memory Project | 12 | 3 | 3 | 3 |

Source: *Montana State Library*

Statewide Library Training

In order to help Montana libraries provide the highest quality of service to patrons, the Montana State Library offers a certification program and a variety of continuing education and training opportunities for Montana librarians, library staff, and trustees.



Total Attendees (56 online) 1,318
 Number of Workshops (23 online) 113
 Number of different Montana locations 44

Time period: October 2007 through September 2008

Source: *Montana State Library*

Montana Shared Catalog Statistics

The Montana Shared Catalog helps Montana libraries meet today's library users demands. It gives Montanans a rich and easy-to-use catalog including more than 2.3 million items which patrons circulated 2,843,665 times from September 2007 to August 2008. Additional groups that partner to share their catalogs include the 4 Rivers, BridgerNet, and Partners groups. Senate and House district figures below show the number of libraries located in cities within 10 miles of the district's boundaries.

Source: *Montana Shared Catalog*

| | Montana | Senate District 28 | House District 55 | House District 56 |
|-------------------------|-----------|--------------------|-------------------|-------------------|
| Participating Libraries | 91 | 0 | 0 | 0 |
| Patrons | 271,880 | 0 | 0 | 0 |
| Items | 2,304,415 | 0 | 0 | 0 |
| Partner Group Libraries | 28 | 0 | 0 | 0 |



Montana Shared Catalog Senate District 28 Public and Branch Libraries

Laurel Public Library - *Laurel*

School librarian Linda Gardner congratulates the first student to check out a book through the newly activated Montana Shared Catalog system at Alberton School Library.

Land

Land Ownership

Senate District 28 number 46 in size and is 5,968 square miles, or about 0% of Montana's total land area (146,923.075 square miles). The average senate district in Montana is 2,938 square miles and the average house district is 1,469.

| Owner | Montana | | Senate District 28 | | House District 55 | | House District 56 | |
|----------------------------------|--------------------|--------|--------------------|--------|-------------------|--------|-------------------|--------|
| | Area (Sq Mi) | % | Area (Sq Mi) | % | Area (Sq Mi) | % | Area (Sq Mi) | % |
| Private | 83,975.739 | 57.156 | 5.968 | 100.00 | 3.104 | 100.00 | 2.864 | 100.00 |
| Local Government | 30.275 | 0.021 | 0.000 | 0.000 | 0.000 | 0.000 | 0.000 | 0.000 |
| Tribal Land and BIA Trust | 8,430.944 | 5.738 | 0.000 | 0.000 | 0.000 | 0.000 | 0.000 | 0.000 |
| Water | 1,319.568 | 0.898 | 0.000 | 0.000 | 0.000 | 0.000 | 0.000 | 0.000 |
| Montana Fish, Wildlife and Parks | 467.888 | 0.318 | 0.000 | 0.000 | 0.000 | 0.000 | 0.000 | 0.000 |
| State Trust Land | 8,060.125 | 5.486 | 0.000 | 0.000 | 0.000 | 0.000 | 0.000 | 0.000 |
| Other State Land | 114.762 | 0.078 | 0.000 | 0.000 | 0.000 | 0.000 | 0.000 | 0.000 |
| US Bureau of Land Management | 12,520.011 | 8.521 | 0.000 | 0.000 | 0.000 | 0.000 | 0.000 | 0.000 |
| US Fish and Wildlife Service | 1,432.092 | 0.975 | 0.000 | 0.000 | 0.000 | 0.000 | 0.000 | 0.000 |
| US Forest Service | 26,403.777 | 17.971 | 0.000 | 0.000 | 0.000 | 0.000 | 0.000 | 0.000 |
| US National Park Service | 1,832.048 | 1.247 | 0.000 | 0.000 | 0.000 | 0.000 | 0.000 | 0.000 |
| Other Federal Land | 369.170 | 0.251 | 0.000 | 0.000 | 0.000 | 0.000 | 0.000 | 0.000 |
| Plum Creek Timber Lands | 1,966.676 | 1.339 | 0.000 | 0.000 | 0.000 | 0.000 | 0.000 | 0.000 |
| Total | 146,923.075 | | 5.968 | | 3.104 | | 2.864 | |

Source: Montana Natural Heritage Program, August 2008

Private Land Agricultural Use

| Owner | Montana | | Senate District 28 | | House District 55 | | House District 56 | |
|-----------------|----------------------|--------|--------------------|--------|-------------------|--------|-------------------|--------|
| | Acres | % | Acres | % | Acres | % | Acres | % |
| Continuous Crop | 37,496.664 | 0.065 | 0.000 | 0.000 | 0.000 | 0.000 | 0.000 | 0.000 |
| Fallow Crop | 12,743,190.043 | 22.240 | 0.000 | 0.000 | 0.000 | 0.000 | 0.000 | 0.000 |
| Farmstead | 54,950.000 | 0.096 | 6.000 | 1.944 | 4.000 | 1.889 | 2.000 | 2.063 |
| Grazing | 37,017,002.816 | 64.604 | 0.000 | 0.000 | 0.000 | 0.000 | 0.000 | 0.000 |
| Irrigated | 1,641,330.911 | 2.865 | 302.708 | 98.056 | 207.784 | 98.111 | 94.924 | 97.937 |
| Timber | 5,006,817.111 | 8.738 | 0.000 | 0.000 | 0.000 | 0.000 | 0.000 | 0.000 |
| Wild Hay | 797,870.640 | 1.392 | 0.000 | 0.000 | 0.000 | 0.000 | 0.000 | 0.000 |
| Total | 57,298,658.19 | | 308.71 | | 211.78 | | 96.92 | |

Source: Montana Department of Administration Information Technology Services Division

Conservation Easements (Acres)

| | Montana | Senate District 28 | House District 55 | House District 56 |
|--|---------------------|--------------------|-------------------|-------------------|
| Bitter Root Land Trust | 690.02 | 0.00 | 0.00 | 0.00 |
| City Government | 600.54 | 0.00 | 0.00 | 0.00 |
| Clark Fork- Pend Oreille Conservancy | 151.16 | 0.00 | 0.00 | 0.00 |
| County Government | 527.62 | 0.00 | 0.00 | 0.00 |
| Ducks Unlimited (Wetlands America Trust) | 15,362.12 | 0.00 | 0.00 | 0.00 |
| Five Valleys Land Trust | 33,710.48 | 0.00 | 0.00 | 0.00 |
| Flathead Land Trust | 6,961.13 | 0.00 | 0.00 | 0.00 |
| Gallatin Valley Land Trust | 32,137.65 | 0.00 | 0.00 | 0.00 |
| Montana Department of Transportation | 508.49 | 0.00 | 0.00 | 0.00 |
| Montana Fish, Wildlife, and Parks | 379,062.50 | 0.00 | 0.00 | 0.00 |
| Montana Land Reliance | 779,823.97 | 0.00 | 0.00 | 0.00 |
| National Wildlife Federation | 19.65 | 0.00 | 0.00 | 0.00 |
| Prickly Pear Land Trust | 985.46 | 0.00 | 0.00 | 0.00 |
| Rattlesnake Land Trust | 189.54 | 0.00 | 0.00 | 0.00 |
| Rocky Mountain Elk Foundation | 47,466.24 | 0.00 | 0.00 | 0.00 |
| Salish and Kootenai Tribe | 102.40 | 0.00 | 0.00 | 0.00 |
| The Bighorn Institute | 1,443.39 | 0.00 | 0.00 | 0.00 |
| The Nature Conservancy | 279,256.25 | 0.00 | 0.00 | 0.00 |
| The Vital Ground Foundation | 673.83 | 0.00 | 0.00 | 0.00 |
| US Bureau of Reclamation | 41.61 | 0.00 | 0.00 | 0.00 |
| US Department of Agriculture | 14,281.37 | 0.00 | 0.00 | 0.00 |
| US Fish and Wildlife Service | 207,447.07 | 0.00 | 0.00 | 0.00 |
| US Forest Service | 8,875.86 | 0.00 | 0.00 | 0.00 |
| Total | 1,810,318.34 | 0.00 | 0.00 | 0.00 |

Source: Montana Natural Heritage Program

Montana GIS Portal

Additional geographic datum and maps are available through the Montana GIS Portal at <http://gisportal.mt.gov/Portal/>. The new portal provides access to more than 400 databases and over 200 sample maps from the collections of the Montana Base Map Service Center, the Montana State Library, Montana Fish, Wildlife and Parks, and Flathead County.



Water Well Development

There are approximately 195,453 water wells in Montana. 55% of Montana's wells were drilled prior to 1990. 24% were drilled in the 1990's and 21% were drilled since the year 2000.

| Year | Montana | | Senate District 28 | | House District 55 | | House District 56 | |
|--------------|----------------|----------------|--------------------|----------------|-------------------|----------------|-------------------|----------------|
| | Count | Avg Depth (ft) | Count | Avg Depth (ft) | Count | Avg Depth (ft) | Count | Avg Depth (ft) |
| Pre 1990 | 106,736 | 120.66 | 340 | 58.68 | 289 | 30.65 | 51 | 86.71 |
| 1990 - 1999 | 47,608 | 122.33 | 57 | 57.77 | 25 | 36.79 | 32 | 78.75 |
| 2000 - 2007 | 41,109 | 135.18 | 45 | 46.11 | 31 | 34.86 | 14 | 57.36 |
| Total | 195,453 | 126.05 | 442 | 54.19 | 345 | 34.10 | 97 | 74.27 |

Source: Montana Bureau of Mines and Geology's Ground Water Information Center (GWIC). This data was drawn from the GWIC database in July 2007.

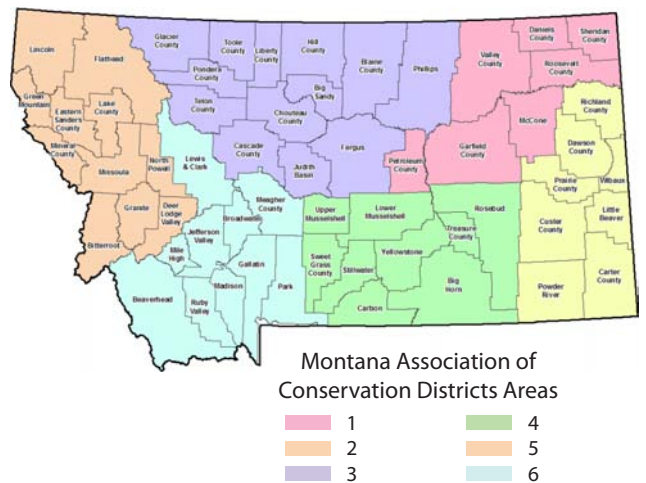
Water Rights

There are 299,021 water rights in Montana. The Department of Natural Resources and Conservation maintains a database of water rights to assist Montana citizens and the Montana Water Court in the water rights adjudication process.

| Type | Montana | Senate District 28 | House District 55 | House District 56 |
|--------------------------|----------------|--------------------|-------------------|-------------------|
| 62-73 Ground Water | 181 | 0 | 0 | 0 |
| Compact | 263 | 0 | 0 | 0 |
| Conservation District | 234 | 0 | 0 | 0 |
| Exempt Right | 6,248 | 3 | 2 | 1 |
| Ground Water Certificate | 76,476 | 156 | 99 | 57 |
| Inter-State Claim | 7 | 0 | 0 | 0 |
| Irrigation District | 211 | 0 | 0 | 0 |
| Powder River Declaration | 8,015 | 0 | 0 | 0 |
| Provisional Permit | 9,113 | 6 | 4 | 2 |
| Reserved Claim | 3,558 | 0 | 0 | 0 |
| Statement of Claim | 182,211 | 10 | 10 | 0 |
| Stockwater Permit | 3,580 | 0 | 0 | 0 |
| Temporary Permit | 13 | 0 | 0 | 0 |
| Water Reservation | 8,911 | 0 | 0 | 0 |
| Total | 299,021 | 175 | 115 | 60 |

Source: Montana Department of Natural Resources and Conservation, Natural Resource Information System, September 2008.

Montana Conservation Districts



Source: Natural Resource Information System, Department of Natural Resources and Conservation, January 2008

Public Water Supplies

There are 3,266 public water supplies located in the State of Montana, one of which is located in Senate District 28. These figures do not include public water supplies serving Native American nations.

| | Count |
|--------------------------|-------|
| House District 55 | |
| Public, transient | 1 |
| House District 56 | |
| None | |

Source: Department of Environmental Quality, December 2007



Dams in Senate District 28

There are 3,666 dams in Montana. Predominant uses are stock/farm ponds (48%) and irrigation (22%).

Source: National Inventory of Dams, USGS Geographic Names Information System

| Type | Montana | Senate District 28 | House District 55 | House District 56 |
|------------------------|--------------|--------------------|-------------------|-------------------|
| Debris Control | 1 | 0 | 0 | 0 |
| Fish and Wildlife Pond | 1 | 0 | 0 | 0 |
| Flood Control | 43 | 0 | 0 | 0 |
| Hydroelectric | 26 | 0 | 0 | 0 |
| Irrigation | 822 | 0 | 0 | 0 |
| Recreation | 54 | 0 | 0 | 0 |
| Stock/Small Farm Pond | 1,771 | 0 | 0 | 0 |
| Tailings | 8 | 0 | 0 | 0 |
| Water Supply | 44 | 0 | 0 | 0 |
| Other | 68 | 0 | 0 | 0 |
| Unknown | 828 | 0 | 0 | 0 |
| Total | 3,666 | 0 | 0 | 0 |

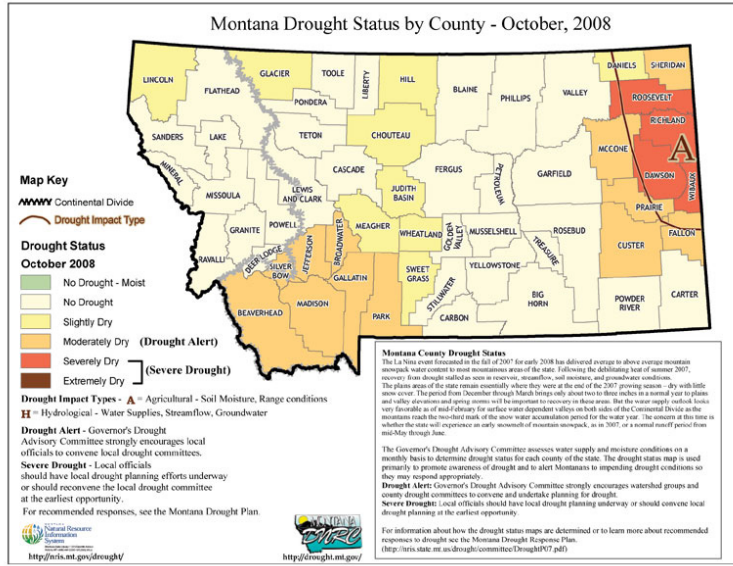
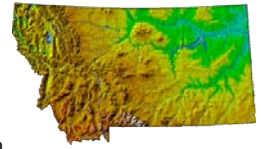
Montana Drought Resources

The Montana Governor's Drought Advisory Committee is charged with monitoring, forecasting, and reporting water supply and moisture conditions, enabling Montanans to make timely and informed decisions to mitigate drought impacts in a proactive manner.

For up to date information and maps on Montana's current drought situation visit <http://drought.mt.gov/default.asp>.

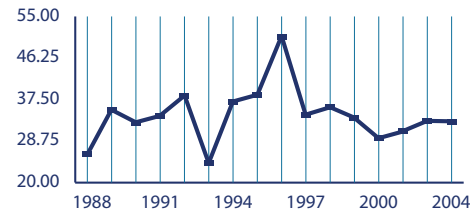
Montana Digital Atlas

Additional mapping and data capabilities are available through the Montana State Library at <http://nris.mt.gov/>. The Montana Digital Atlas provides unlimited access to detailed information on such issues as climate, environmental impacts, land information, water, and cultural data.



Source: Natural Resource Information System

Montana Yearly Average Precipitation (1988 - 2004)



Source: Natural Resources Conservation Service

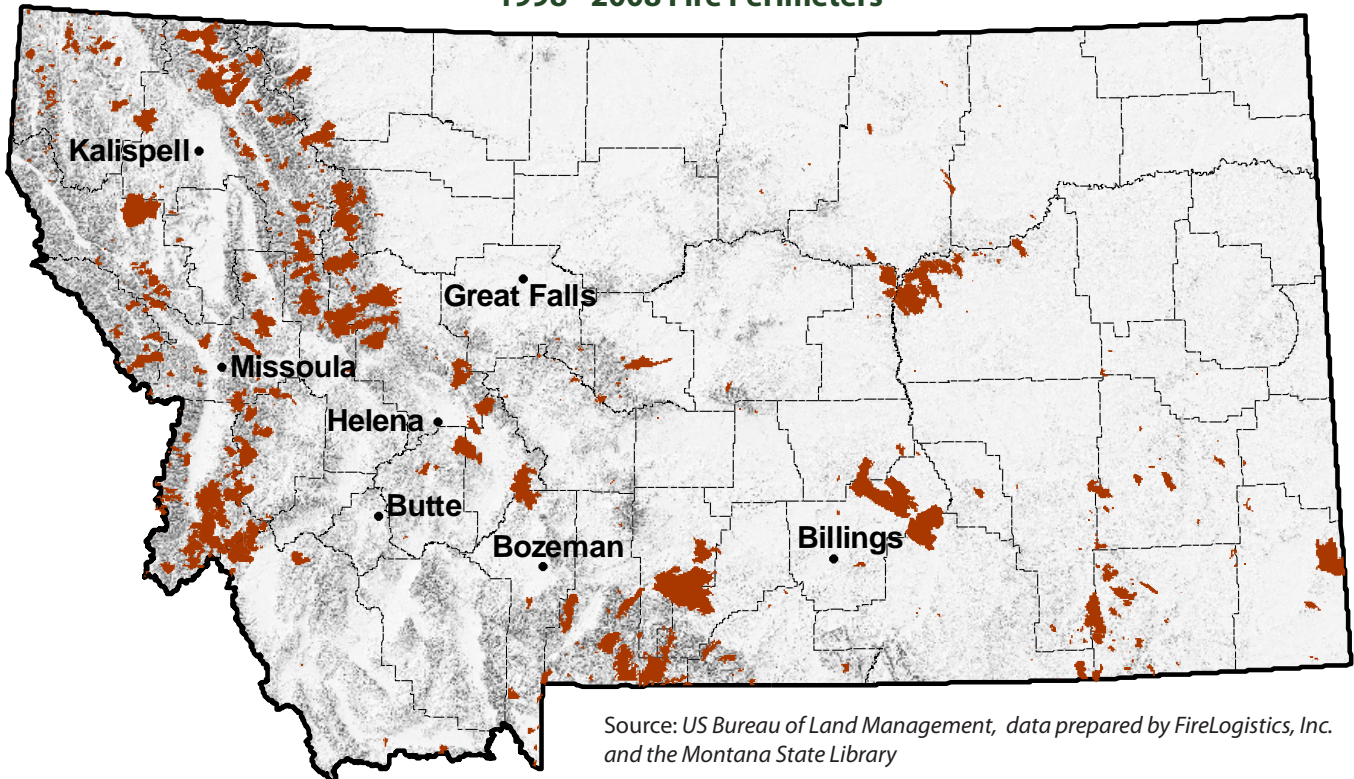
Montana Fires 2002 - 2007

All Fires from All Agencies

| Year | Count | Acreage |
|------|-------|-----------|
| 2002 | 1,372 | 110,309 |
| 2003 | 2,326 | 736,809 |
| 2004 | 1,447 | 18,445 |
| 2005 | 1,316 | 103,294 |
| 2006 | 2,302 | 1,047,118 |
| 2007 | 1,875 | 778,079 |

Source: Department of Natural Resources and Conservation

1998 - 2008 Fire Perimeters



Source: US Bureau of Land Management, data prepared by FireLogistics, Inc. and the Montana State Library

Energy, Mines

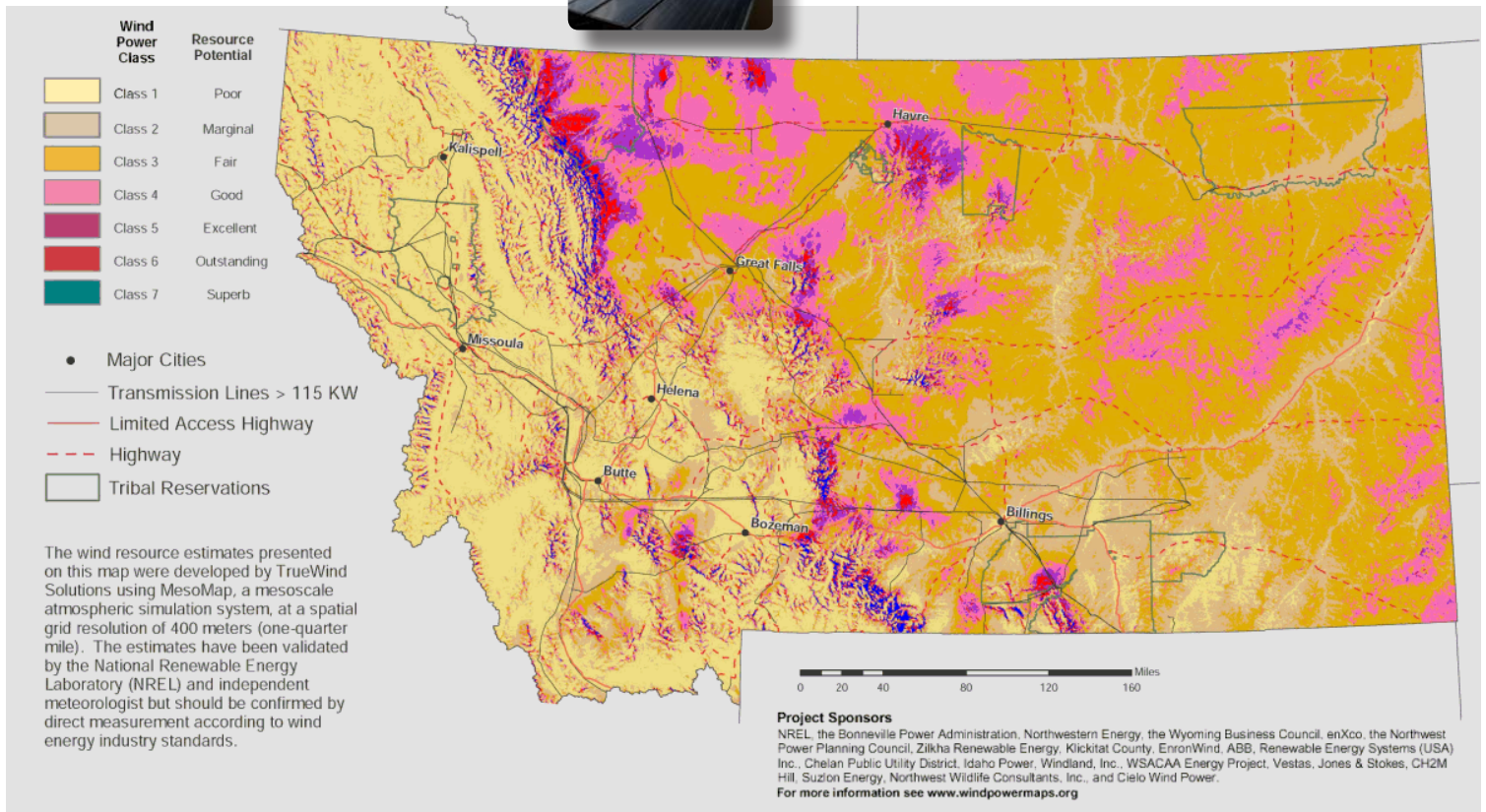
Oil and Gas Wells in Senate District 28

| | Montana | Senate District 28 | House District 55 | House District 56 |
|--------------------------------------|---------------|--------------------|-------------------|-------------------|
| Coal Bed Methane, Completed | 1,042 | 0 | 0 | 0 |
| Coal Bed Methane, Abandoned | 36 | 0 | 0 | 0 |
| Coal Bed Methane, Permitted | 105 | 0 | 0 | 0 |
| Coal Bed Methane, Under Construction | 6 | 0 | 0 | 0 |
| Coal Bed Methane, Water | 1 | 0 | 0 | 0 |
| Gas, Completed | 6,770 | 0 | 0 | 0 |
| Gas, Abandoned | 2,265 | 0 | 0 | 0 |
| Gas, Permitted | 284 | 0 | 0 | 0 |
| Gas, Under Construction | 210 | 0 | 0 | 0 |
| Gas, Water | 49 | 0 | 0 | 0 |
| Oil, Completed | 6,835 | 0 | 0 | 0 |
| Oil, Abandoned | 4,390 | 0 | 0 | 0 |
| Oil, Gas | 2 | 0 | 0 | 0 |
| Oil, Permitted | 169 | 0 | 0 | 0 |
| Oil, Under Construction | 160 | 0 | 0 | 0 |
| Oil, Water | 31 | 0 | 0 | 0 |
| Total | 22,355 | 0 | 0 | 0 |

Source: Montana Board of Oil and Gas Conservation, October 2008



Wind Power Distribution



Find additional energy related data and maps at <http://nris.mt.gov/>

Pipelines in Senate District 28

| | Montana | | Senate District 28 | | House District 55 | | House District 56 | |
|-----------------|------------|--------------|--------------------|----------|-------------------|----------|-------------------|----------|
| | Count | Miles | Count | Miles | Count | Miles | Count | Miles |
| Crude Oil | 90 | 1,970 | 0 | 0 | 0 | 0 | 0 | 0 |
| Natural Gas | 360 | 3,301 | 1 | 1 | 1 | 1 | 0 | 0 |
| Refined Product | 47 | 805 | 0 | 0 | 0 | 0 | 0 | 0 |
| Other | 24 | 402 | 0 | 0 | 0 | 0 | 0 | 0 |
| Total | 521 | 6,477 | 1 | 1 | 1 | 1 | 0 | 0 |

Source: Pipeline Integrity Management Mapping Application, December 2006

Abandoned Mines and Remediation Sites

| | Abandoned Mines | Remediation Sites |
|--------------------|-----------------|-------------------|
| Montana | 6,857 | 656 |
| Senate District 28 | 0 | 0 |
| House District 55 | 0 | 0 |
| House District 56 | 0 | 0 |

Source: Montana Department of Environmental Quality, 2008

Montana House Heating Fuel

| Occupied housing units | | 100% |
|--------------------------|---------|-------|
| Utility gas | 215,892 | 58.0% |
| Bottled, tank, or LP gas | 48,188 | 13.0% |
| Electricity | 66,054 | 17.8% |
| Fuel oil, kerosene, etc. | 6,243 | 1.7% |
| Coal or coke | 701 | 0.2% |
| Wood | 30,210 | 8.1% |
| Solar energy | 285 | 0.1% |
| Other fuel | 4,012 | 1.1% |
| No fuel used | 369 | 0.1% |

Source: 2007 American Community Survey 1-Year Estimates

Wildlife and Recreation

Montana is blessed with a wealth of wildlife and habitat diversity. These resources provide exceptional opportunities for recreation and contribute substantially to the state's economy and quality of life.

Wildlife Highlights

For more information on other animals, plants, and habitats in your Senate District, visit the Montana Natural Heritage Program at <http://mtnhp.org>.

Resources include:

- Montana Field Guide – an online encyclopedia of Montana's animals and plants;
- Natural Heritage Tracker – powerful mapping tools;
- Land stewardship maps - show public lands, conservation easements, and special designations;
- Access to NatureServe Explorer – with information on species and habitats for all of North America;
- Publications - over 100 survey, species and ecology reports.
- Expert scientists to ensure accuracy of information;
- Quick, friendly responses to data requests and user support.

Western Grebe

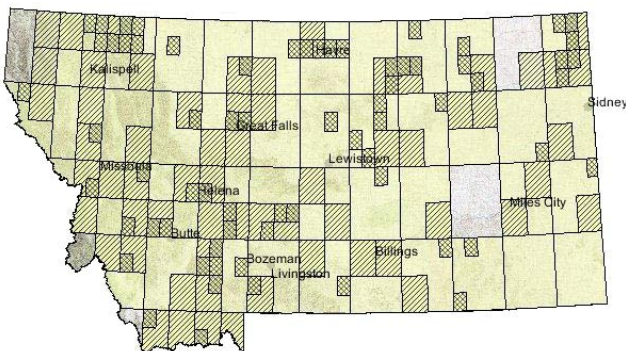
Aechmophorus occidentalis

The bright red eyes, long white neck, and narrow body of the Western Grebe make it easily identifiable on Montana's lakes and marshes.

Source: Montana Natural Heritage Program, Montana Field Guide



Western Grebe General Observations



Source: Natural Heritage Tracker (map)

Montana Animal and Plant Diversity

| | |
|-----------------|-------|
| Mammals | 108 |
| Birds | 413 |
| Reptiles | 18 |
| Fish | 85 |
| Amphibians | 13 |
| Vascular Plants | 2,400 |

Montana Big Game Population Estimates

| | |
|-------------------|---------|
| Mule Deer | 327,931 |
| White-Tailed Deer | 237,496 |
| Antelope | 220,500 |
| Elk | 138,496 |
| Black Bear | 15,500 |
| Bighorn Sheep | 5,300 |
| Moose | 4,800 |
| Mountain Lion | 1,800 |

Montana Recreation Resources

| | |
|-----------------------------------|------------------|
| Public lands acres (multiple use) | 26,127,212 acres |
| Rivers and Streams* | 177,000 miles |
| Cold Water Fishery Streams | 15,000 miles |
| Warm Water Fishery Streams | 6,100 miles |
| Lakes* | 845,000 acres |
| Cold Water Fisheries | 400,000 acres |
| Warm Water Fisheries | 350,000 acres |

Montana Recreation Sites

| | |
|------------------------------|-----------------|
| Montana State Parks | 50 |
| Total acres | 34,293 acres |
| National Parks | 7 |
| Total acres | 1,172,510 acres |
| FWP Fishing Access Sites | 320 |
| Total acres | 24,502 acres |
| FWP Block Management Acreage | 8.5 million |
| Wildlife Viewing Sites | 135 |
| Hiking Trails | 2,300 |
| Total miles | 15,000 miles |
| Groomed snowmobile trails | 4,023 miles |

Montana Wildlife Recreation Facts

| | |
|--|--------------|
| Percentage of Montanans (age 16 or older)... | |
| Who Hunted, 2006 | 19% |
| Who Fished, 2006 | 24% |
| Who Participated in Wildlife-Watching Activities, 2006 | 50% |
| Hunting licenses purchased, 2005 | 188,299 |
| By Montana Residents | 144,642 |
| By Non-residents | 43,637 |
| Fishing licenses purchased, 2006 | 390,214 |
| By Montana Residents | 230,426 |
| By Non-residents | 159,788 |
| Angler Days Reported by Montana Residents, 2005 | 2.78 million |
| Wildlife Viewing by Montana Residents....** | |
| From Home | 389,000 |
| Traveled in the State | 510,000 |
| Use of Fishing Access Sites | 3.9 million |
| Personal Watercraft Registered | 81,926 |
| Off-Highway Vehicles Registered, 2007 | 46,707 |

Montana Economic Impacts of Wildlife Recreation

| | |
|--|-----------------|
| Spent During Wildlife-Viewing Trips in Montana, 2006** | \$365 million |
| Spent by Anglers, 2005 (excludes license fees) | \$251.7 million |
| Hunting-related expenditures | \$302 million |

Source: Montana Natural Heritage Program; Fish, Wildlife and Parks

* National Water Quality Inventory: 1998 Report to Congress

** 2006 National Survey of Fishing, Hunting, and Wildlife and Associated Recreation

Wildlife and Recreation

Species Diversity in Senate District 28

| Senate District 28 | |
|--------------------|------------|
| Amphibians | 8 |
| Birds | 289 |
| Fish | 24 |
| Mammals | 66 |
| Reptiles | 13 |
| Total | 400 |

Source: Montana Natural Heritage Program



Acres of Big Game Winter Range

Big game winter ranges cover a total of 0 acres or 0.00% of Senate District 28. The table below identifies the number of acres used by individual species even when these areas overlap with other big game animals.

| Senate District 28 | |
|--------------------|------|
| Antelope | 0.00 |
| Bighorn Sheep | 0.00 |
| Elk | 0.00 |
| Mountain Goat | 0.00 |
| Mule Deer | 0.00 |
| Moose | 0.00 |
| White-tailed Deer | 0.00 |

Source: Montana Fish, Wildlife and Parks

There are a total of 96 Wildlife Viewing Sites in Montana.

Recreation Area (Acres)

| Senate District 28 | |
|---------------------------------|-------------|
| Fishing Access Sites | 0.00 |
| State Parks | 0.00 |
| Wildlife Conservation Easements | 0.00 |
| Wildlife Protection Areas | 0.00 |
| Wildlife Management Areas | 0.00 |
| Total | 0.00 |

Source: Montana Fish, Wildlife, & Parks

Wildlife Highlights

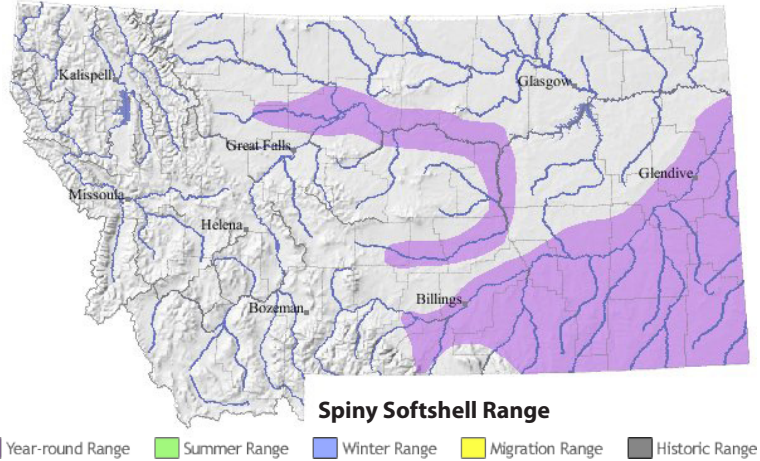
Spiny Softshell

Apalone spinifera

Spiny Softshells are known for foraging in the water, often in shallows with vegetation. Most mature females lay a single clutch of 20 to 40 eggs in the fall.



Source: Montana Natural Heritage Program, Montana Field Guide



Block Management Acreage

There are a total of 7,546,232 acres of Block Management land (excluding Plum Creek*) in the State of Montana. There are no Block Management acres located in Senate District {fwp_blockmgmt.sd}.

*Plum Creek land in FWP's Regions 1 and 2 are not included in these statistics. Although they are part of the Block Management Program, they are not traditional BMA's and are managed differently.

Source: Montana Fish, Wildlife & Parks



Fishing and Hunting Licenses by County

| | Fishing | Hunting | Total |
|--------------------|---------|---------|--------|
| Yellowstone County | 43,775 | 47,089 | 90,864 |

Source: Montana Fish, Wildlife & Parks

Senate District 28 Libraries

Public



Laurel Public Library

Nancy Schmidt, Library Director
Yellowstone County
PO Box 68 Laurel, MT 59044
(406) 628-4961
Web Site: <http://www.laurelpubliclibrary.org>
Catalog: <http://mtscprod.msl.mt.gov/uhtbin/cgisirsi/x/0/0/49>
Montana Shared Catalog, OCLC, HeritageQuest, Statewide Databases

Parmly Billings Library

Bill Cochran, Library Director
Yellowstone County
510 North Broadway Billings, MT 59101
(406) 657-8258
Web Site: <http://www.billings.lib.mt.us/>
Catalog: <http://catalog.billings.lib.mt.us/OCLC.MyMontanaLibrary2Go,HeritageQuest,AskMontanaParticipant,MontanaMemoryProjectParticipant,StatewideDatabases>

Academic

Ida Owen Dockery Library

Andrea Todd, Library Director
Yellowstone County
1515 Shiloh Road Billings, MT 59106
(406) 656-9950
Statewide Databases

MSU - Billings Library

Jane Howell, Library Director
Yellowstone County
1500 University Drive Billings, MT 59101
(406) 657-2262
Web Site: <http://www.msubitillings.edu/library>
Catalog: <http://isbn.lib.montana.edu/uhtbin/cgisirsi/x/0/49>
OMNI System, OCLC, Montana Memory Project Participant, Statewide Databases

Paul M. Adams Memorial Library

Bill Kehler, Library Director
Yellowstone County
Billings, MT 59102
(406) 657-1087
Web Site: <http://library.rocky.edu>
Catalog: <http://isbn.lib.montana.edu/uhtbin/cgisirsi/x/0/49>
OMNI System, OCLC, Ask Montana Participant, Montana Memory Project Participant, Statewide Databases

Bookmobile

Parmly Billings Library Bookmobile

Bill Cochran, Library Director
Yellowstone County
510 North Broadway Billings, MT 59101
(406) 657-8257
Statewide Databases

School

Alkali Creek Elementary School

Ann Walters, School Librarian
Yellowstone County
681 Alkali Creek Rd Billings, MT 59105
(406) 255-3810
Web Site: <http://library.billings.k12.mt.us/alkali-creek.library.html>
Catalog: <http://library.billings.k12.mt.us/BillingsSchools,OCLC,StatewideDatabases>

Arrowhead Elementary School

Mari Jane Orner, School Librarian
Yellowstone County
2510 38th St W Billings, MT 59102
(406) 655-3131
Billings Schools, OCLC, Statewide Databases

Beartooth Elementary School

Audrey O'Brien, School Librarian
Yellowstone County
1345 Elaine Street Billings, MT 59105
(406) 294-0550
Billings Schools, OCLC, Statewide Databases

Bench Elementary School

Kathy Carlson, School Librarian
Yellowstone County
505 Milton Rd Billings, MT 59105
(406) 255-3819
Web Site: <http://www.billings.k12.mt.us/BillingsSchools,OCLC,StatewideDatabases>

Big Sky Elementary School

Sharon Drake, School Librarian
Yellowstone County
3231 Granger Ave E Billings, MT 59102
(406) 655-3115
Billings Schools, OCLC, Statewide Databases

Billings Career Education Center

Denise Grewell, Media Specialist
Yellowstone County
3723 Central Avenue Billings, MT 59102
(406) 655-3064
Web Site: <http://bcc.billings.k12.mt.us/library/index.html>
Catalog: <http://library.billings.k12.mt.us/uhtbin/cgisirsi/Wed+Oct++3+14:29:33+MDT+2001/0/49>
Billings Schools, OCLC, Statewide Databases

Billings Central Catholic

High School Library

Kathleen Harris, School Librarian
Yellowstone County
3 Broadwater Ave Billings, MT 59101
(406) 245-6651
Web Site: <http://www.billingscatholicschools.org>
Montana Shared Catalog, Statewide Databases

Billings Public School Libraries (SD#2)

Lyn McKinney, School Librarian
Yellowstone County
415 N 30th Street Billings, MT 59101
(406) 247-3790
Web Site: <http://www.billings.k12.mt.us/>
Catalog: <http://library.billings.k12.mt.us/uhtbin/cgisirsi/Wed+Oct++3+14:29:33+MDT+2001/0/49>
OCLC, Ask Montana Participant, Statewide Databases

Billings West High School

Kathrine Field, School Librarian
Yellowstone County
2201 St Johns Ave Billings, MT 59102
(406) 655-1362
Web Site: <http://www.billings.k12.mt.us/>
Catalog: <http://library.billings.k12.mt.us/uhtbin/cgisirsi/Wed+Oct++3+14:29:33+MDT+2001/0/49>
Billings Schools, OCLC, Statewide Databases

Bitterroot Elementary School

Kathi Hoyt, School Librarian
Yellowstone County
1801 Bench Blvd Billings, MT 59105
(406) 255-3825
Billings Schools, OCLC, Statewide Databases

Blue Creek School Library

Deedee Grubbs, Library Elementary Staff Member
Yellowstone County
3652 Blue Creek Rd Billings, MT 59101
(406) 259-0653
Web Site: <http://www.bluecreek.k12.mt.us/StatewideDatabases>

Boulder Elementary School

Roberta Fuller, School Librarian
Yellowstone County
2202 32nd St W Billings, MT 59102
(406) 655-3117
Web Site: <http://www.billings.k12.mt.us/BillingsSchools,OCLC,StatewideDatabases>

Broadwater Elementary School

Don Casey, School Librarian
Yellowstone County
Billings, MT 59102
(406) 255-3831
Web Site: <http://billings.k12.mt.us/bwater>
Catalog: <http://library.billings.k12.mt.us/uhtbin/webcat>
Billings Schools, OCLC, Statewide Databases

Burlington Elementary School

Kathi Hoyt, School Librarian
Yellowstone County
2135 Lewis Ave Billings, MT 59102
(406) 655-3119
Billings Schools, OCLC, Statewide Databases

Canyon Creek School

Sandra Pena, Librarian
Yellowstone County
3139 Duck Creek Rd Billings, MT 59101
(406) 656-4471
Statewide Databases

Castle Rock Middle School

Karin Green, School Librarian
Yellowstone County
1441 Governors Blvd Billings, MT 59105
(406) 237-6641
Web Site: <http://www.billings.k12.mt.us/BillingsSchools,OCLC,StatewideDatabases>

Central Heights Elementary School

Rita Evans, School Librarian
Yellowstone County
120 Lexington Billings, MT 59102
(406) 655-3121
Billings Schools, OCLC, Statewide Databases

Eagle Cliffs Elementary School

Janet Cole, School Librarian
Yellowstone County
1201 Kootenai Billings, MT 59105
(406) 255-3840
Billings Schools, OCLC, Statewide Databases

Elder Grove School Library

Ann Gunderson, Media Specialist
Yellowstone County
Billings, MT 59106
(406) 656-2893
Web Site: <http://www.eldergrove.k12.mt.us/StatewideDatabases>

Elysian School

Carol Drum, School Librarian
Yellowstone County
6416 Elysian Rd Billings, MT 59101
(406) 656-4101
Statewide Databases

Helen L. Bekken Library

Donna Petriccione, School Librarian
Yellowstone County
205 N 32nd Street Billings, MT 59101
(406) 259-5037
Statewide Databases

Highland Elementary School

Ann Walters, School Librarian
Yellowstone County
729 Parkhill Drive Billings, MT 59102
(406) 255-3850
Billings Schools, OCLC, Statewide Databases

IMC/Billings Public Schools

Nina Jackson, Library System Services Coord
Yellowstone County
1470 Industrial Avenue Billings, MT 59101
(406) 869-3915
Statewide Databases

Independent Elementary School

Nicky Wolf, School Librarian
Yellowstone County
2907 Roundup Rd Billings, MT 59105
(406) 259-8109
Statewide Databases

Laurel High School

Jamie McCauley, Academy Director
Yellowstone County
203 E 8th St Laurel, MT 59044
(406) 628-7911
Web Site: <http://www.laurel.k12.mt.us/>
Statewide Databases

Laurel Middle School

Anne Easton, School Librarian
Yellowstone County
725 Washington Avenue Laurel, MT 59044
(406) 628-3933
Statewide Databases

Lewis and Clark Middle School

Rena Bucher, School Librarian
Yellowstone County
1315 Lewis Avenue Billings, MT 59102
(406) 237-6710
Web Site: <http://www.billings.k12.mt.us/>
Catalog: <http://library.billings.k12.mt.us>
Billings Schools, OCLC, Statewide Databases

McKinley Elementary School

Janet Cole, School Librarian
Yellowstone County
820 N 31st St Billings, MT 59101
(406) 255-3853
Web Site: <http://www.billings.k12.mt.us/>
Billings Schools, OCLC, Statewide Databases

Meadowlark Elementary School

Ginny Waples, School Librarian
Yellowstone County
221 29th St W Billings, MT 59102
(406) 655-3133
Catalog: <http://library.billings.k12.mt.us>
Billings Schools, OCLC, Statewide Databases

Miles Avenue Elementary School

Ruth Ferris, School Library Media Specialist
Yellowstone County
1601 Miles Ave Billings, MT 59102
(406) 655-3135
Billings Schools, OCLC, Statewide Databases

Morin Elementary

Tia Schacht, Supervising Teacher/Librarian
Yellowstone County
8824 Pryor Rd Billings, MT 59101
(406) 259-6093
Statewide Databases

Newman Elementary School

Preston Liz (Elizabeth), School Librarian
Yellowstone County
605 S Billings Blvd Billings, MT 59101
(406) 255-3862
Billings Schools, OCLC, Statewide Databases

Orchard Elementary School

Andrea Meyer, School Librarian
Yellowstone County
120 Jackson St Billings, MT 59101
(406) 255-3867
Billings Schools, OCLC, Statewide Databases

Pioneer Elementary School

Connie Russell, School Librarian
Yellowstone County
1937 Dover Road Billings, MT 59105
(406) 373-5649
Statewide Databases

Poly Drive Elementary School

Kelli Delaney, School Librarian
Yellowstone County
2410 Poly Drive Billings, MT 59102
(406) 655-3137
Web Site: <http://www.billings.k12.mt.us/poly/index.htm>
Catalog: <http://library.billings.k12.mt.us/uhtbin/cgisirsi>
Billings Schools, OCLC, Statewide Databases

Ponderosa Elementary School

Robin Byford, School Librarian
Yellowstone County
4188 King Ave E Billings, MT 59101
(406) 255-3873
Web Site: <http://www.billings.k12.mt.us/>
Catalog: <http://library.billings.k12.mt.us>
Billings Schools, OCLC, Statewide Databases

Rimrock Elementary School

Angela Paris, School Librarian
Yellowstone County
2802 13th St W Billings, MT 59102
(406) 255-3876
Billings Schools, OCLC, Statewide Databases

Riverside Middle School

Janet Nickoloff, Media Specialist
Yellowstone County
3700 Madison Ave Billings, MT 59101
(406) 237-6815
Web Site: <http://www.billings.k12.mt.us/riverside>
Catalog: http://library.billings.k12.mt.us/uhtbin/cgisirsi/BfckCeyE97/ALKALI_CR/1770075/60/1180/X
Billings Schools, OCLC, Statewide Databases

Rose Park Elementary School

Ginny Waples, Librarian
Yellowstone County
1812 19th St W Billings, MT 59102
(406) 255-3879
Billings Schools, OCLC, Statewide Databases

Sandstone Elementary School

SuiMing Woo, School Librarian
Yellowstone County
1440 Nutter Blvd Billings, MT 59105
(406) 255-3882
Web Site: <http://www.billings.k12.mt.us/>
Billings Schools, OCLC, Statewide Databases

Skyview High School Library

Peggy Smith, Librarian
Yellowstone County
1775 High Sierra Boulevard Billings, MT 59105
(406) 247-2491
Web Site: <http://skyview.billings.k12.mt.us/library>
Catalog: <http://library.billings.k12.mt.us/>
Billings Schools, OCLC, Statewide Databases

St Francis Intermediate School Library

Karen Arce, School Librarian
Yellowstone County
1734 Yellowstone Billings, MT 59102
(406) 656-2300
Montana Shared Catalog, Statewide Databases

St Francis Primary School Library

Amy Brown, Librarian
Yellowstone County
511 Custer Avenue Billings, MT 59101
(406) 259-6421
Montana Shared Catalog, Statewide Databases

Washington Elementary School Library

Audrey O'Brien, School Librarian
Yellowstone County
1044 Cook Ave Billings, MT 59102
(406) 255-3885
Web Site: <http://www.billings.k12.mt.us/>
Billings Schools, OCLC, Statewide Databases

Will James Middle School Library

Andrea Doles, School Librarian
Yellowstone County
1200 30th St West Billings, MT 59102
(406) 651-8559
Catalog: <http://library.billings.k12.mt.us>
Billings Schools, OCLC, Statewide Databases

Yellowstone Academy Library

Nancy Brandt, School Librarian
Yellowstone County
Billings, MT 59106
(406) 656-2198
Statewide Databases

Special**Billings Clinic Medical Library**

Victoria Koch, Library Director
Yellowstone County
PO Box 37000 Billings, MT 59107
(406) 238-2226
Web Site: <http://www.billingsclinic.com>
Catalog: <http://mtscprod.msl.mt.gov/uhtbin/cgisirsi/x/0/0/49>
Montana Shared Catalog, OCLC, Statewide Databases

Crowley Haughey Hanson

Toole and Dietrich
Margaret Webster, Library Director
Yellowstone County
PO Box 2529 Billings, MT 59101
(406) 255-7201
OCLC, Statewide Databases

Dowl HKM Library

Irene Nelson, Library Director
Yellowstone County
PO Box 31318 Billings, MT 59107
(406) 656-6399
Statewide Databases

Planned Parenthood of Montana

Melissa Reams, Teacher
Yellowstone County
100 West Wicks Lane Billings, MT 59105
(406) 869-5046
Web Site: <http://www.ppfa.org>
Statewide Databases

Rimrock Foundation Library

Hugh Kilbourne, Library Director
Yellowstone County
P.O. Box 30374 Billings, MT 59101
(800) 227-3953
Web Site: <http://www.rimrock.org>
Statewide Databases

St Vincent Healthcare Health

Sciences Library

Ginger Kern, Assistant Librarian
Yellowstone County
PO Box 35200 Billings, MT 59101
(406) 237-8640
Web Site: <http://www.svh-mt.org>
OCLC, Statewide Databases

TRIC/PLUK Library

Erin Cartwright, Library Director
Yellowstone County
516 N 32nd Street Billings, MT 59101
(406) 255-0540
Web Site: <http://www.pluk.org>
Catalog: <http://mtscprod.msl.mt.gov/uhtbin/cgisirsi/x/0/0/49>
Montana Shared Catalog, OCLC, Statewide Databases

Yellowstone Boys and Girls Ranch Library

Lynda Jorgenson, Library Director
Yellowstone County
1732 S 72nd St W Billings, MT 59106
(406) 655-2100
Web Site: <http://www.ybgr.org>
Statewide Databases

State of Montana Index

| | Montana | United States | Rank in US |
|--|------------|---------------|------------|
| Geography | | | |
| Population per square mile 2000 | 6.2 | 79.6 | 27 |
| Households 2000 (complete count) | 358,667 | 105,480,101 | 22 |
| Persons per household 2000 (complete count) | 2.5 | 2.6 | 32 |
| Resident Population | | | |
| Estimate (July 1) 2006 | 944,632 | 299,398,484 | 23 |
| Estimate, percent change - April 1, 2000 to July 1, 2006 | 4.7 | 6.4 | 34 |
| Estimate, net change - April 1, 2000 to July 1, 2006 | 42,437 | 17,973,882 | 27 |
| (April 1) 2000 (complete count) | 902,195 | 281,421,906 | 23 |
| Under 5 years of age (July 1) 2006 | 57,916 | 20,417,636 | 24 |
| Under 5 years of age, percent (July 1) 2006 | 6.1 | 6.80 | 30 |
| Under 18 years of age (July 1) 2006 | 217,848 | 73,735,562 | 23 |
| Under 18 years of age, percent (July 1) 2006 | 23.1 | 24.6 | 23 |
| 65 years and over (July 1) 2006 | 14 | 37,260,352 | 22 |
| 65 years and over, percent (July 1) 2006 | 130,592 | 12 | 12 |
| Total females, percent (July 1) 2006 | 50.0 | 50.7 | 6 |
| White alone (July 1) 2006 | 858,140 | 239,746,254 | 25 |
| Black alone (July 1) 2006 | 4,094 | 38,342,549 | 16 |
| American Indian and Alaska Native alone (July 1) 2006 | 60,725 | 2,902,851 | 30 |
| Asian alone (July 1) 2006 | 5,699 | 13,159,343 | 33 |
| Native Hawaiian and Other Pacific Islander alone (July 1) 2006 | 527 | 528,818 | 36 |
| Population 5 years and over, percent speaking language other than English at | 5.2 | 17.9 | 48 |
| Civilian noninstitutionalized population, 5 years and over, with a disability 2000 | 145,732 | 49,746,248 | 18 |
| Vital Statistics | | | |
| Births 2004 | 11,519 | 4,112,052 | 24 |
| Deaths 2004 | 8,094 | 2,397,615 | 17 |
| Infant deaths under one year 2004 | 52 | 27,936 | 20 |
| Population 5 years and over by residence in 1995 - percent in same house 2000 (sample) | 53.6 | 54.1 | 13 |
| Percent foreign born population 2000 (sample) | 1.8 | 11.1 | 45 |
| Education | | | |
| Educational attainment - persons 25 years and over - percent high school graduate or higher 2000 | 87.2 | 80.4 | 46 |
| Educational attainment - persons 25 years and over - percent bachelor's degree or higher 2000 | 24.4 | 24.4 | 45 |
| Income/Poverty | | | |
| Per capita income in 1999 | 17,151 | 21,587 | 39 |
| Median household income 2004 | 35,574 | 44,334 | 45 |
| People of all ages in poverty - percent 2004 | 14 | 13 | 8 |
| Personal Income (NAICS) 2005 | 27,122 | 10,220,942 | 24 |
| Per capita personal income (NAICS) 2005 | 29,015 | 34,471 | 41 |
| Federal | | | |
| Federal Government expenditure - total FY 2004 | 7,493,567 | 2,143,781,727 | 19 |
| Federal Government expenditure per capita FY 2004 | 8,085 | 7,300 | 10 |
| Housing | | | |
| Housing unit estimates as of July 1, 2006 | 432,023 | 126,316,181 | 22 |
| Housing unit estimates - net change, April 1, 2000 (base) to July 1, 2006 | 19,390 | 10,411,707 | 24 |
| Housing unit estimates - percent change, April 1, 2000 (base) to July 1, 2006 | 4.70 | 9.00 | 26 |
| Owner-occupied housing units - percent of total occupied housing units 2000 (complete count) | 69.1 | 66.2 | 4 |
| Median value of specified owner-occupied housing units 2000 (sample) | 99,500 | 119,600 | 41 |
| Housing units by units in structure - multiple units 2000 (sample) | 15.7 | 26.40 | 44 |
| New private housing units authorized by building permits - total 2006 (20,000-place universe) | 4,542 | 1,838,903 | 18 |
| Valuation of new private housing units authorized by building permits 2006 | 723,109 | 291,314,492 | 23 |
| Employment/Business | | | |
| Civilian labor force 2006 | 493,842 | 151,428,000 | 23 |
| Civilian labor force unemployment 2006 | 15,680 | 7,001,000 | 29 |
| Civilian labor force unemployment rate 2006 | 3.2 | 4.6 | 38 |
| Employment in all industries (NAICS) 2005 | 613,425 | 174,249,600 | 23 |
| Employment in all industries (NAICS), net change 2000 (SIC)- 2005 | 54,370 | 7,490,800 | 20 |
| Employment in government and government enterprises (NAICS) 2005 | 92,756 | 23,837,000 | 24 |
| Earnings in all industries (NAICS, no code) 2005 | 19,787,993 | 7,983,652,000 | 24 |
| Earnings in all industries (NAICS, no code), average earnings per job 2005 | 32,258 | 45,817 | 32 |
| Average travel time to work for workers 16 years and over not working at home 2000 | 17.7 | 25.5 | 19 |
| Private nonfarm establishments 2005 | 35,736 | 7,499,702 | 26 |
| Private nonfarm employment for pay period including March 12, 2005 | 326,887 | 116,317,003 | 23 |
| Private nonfarm employment for pay period including March 12, 2005, percent change 2000-2005 | 10.4 | 2.0 | 35 |
| Nonemployer: total (NAICS 00) establishments, 2005 | 80,851 | 20,392,068 | 23 |
| Accommodation and Food Services: total (NAICS 72) - sales of establishments with payroll 2002 | 1,537,986 | 449,498,718 | 31 |
| Total number of firms 2002 | 100,402 | 22,974,655 | 24 |
| Manufacturing: total (NAICS 31-33) - value of shipments 2002 | 4,987,577 | 3,916,136,712 | 23 |
| Wholesale trade: total (NAICS 42) - sales of establishments with payroll 2002 | 7,223,420 | 4,634,755,112 | 28 |
| Retail trade: total (NAICS 44-45) - sales of establishments with payroll 2002 | 10,122,625 | 3,056,421,997 | 23 |
| Retail trade: total (NAICS 44-45) - sales of establishments with payroll per capita 2002 | 11,116 | 10,615 | 42 |
| Land in farms (NAICS) 2002(acres)(not adjusted) | 59,612,403 | 938,279,056 | 32 |

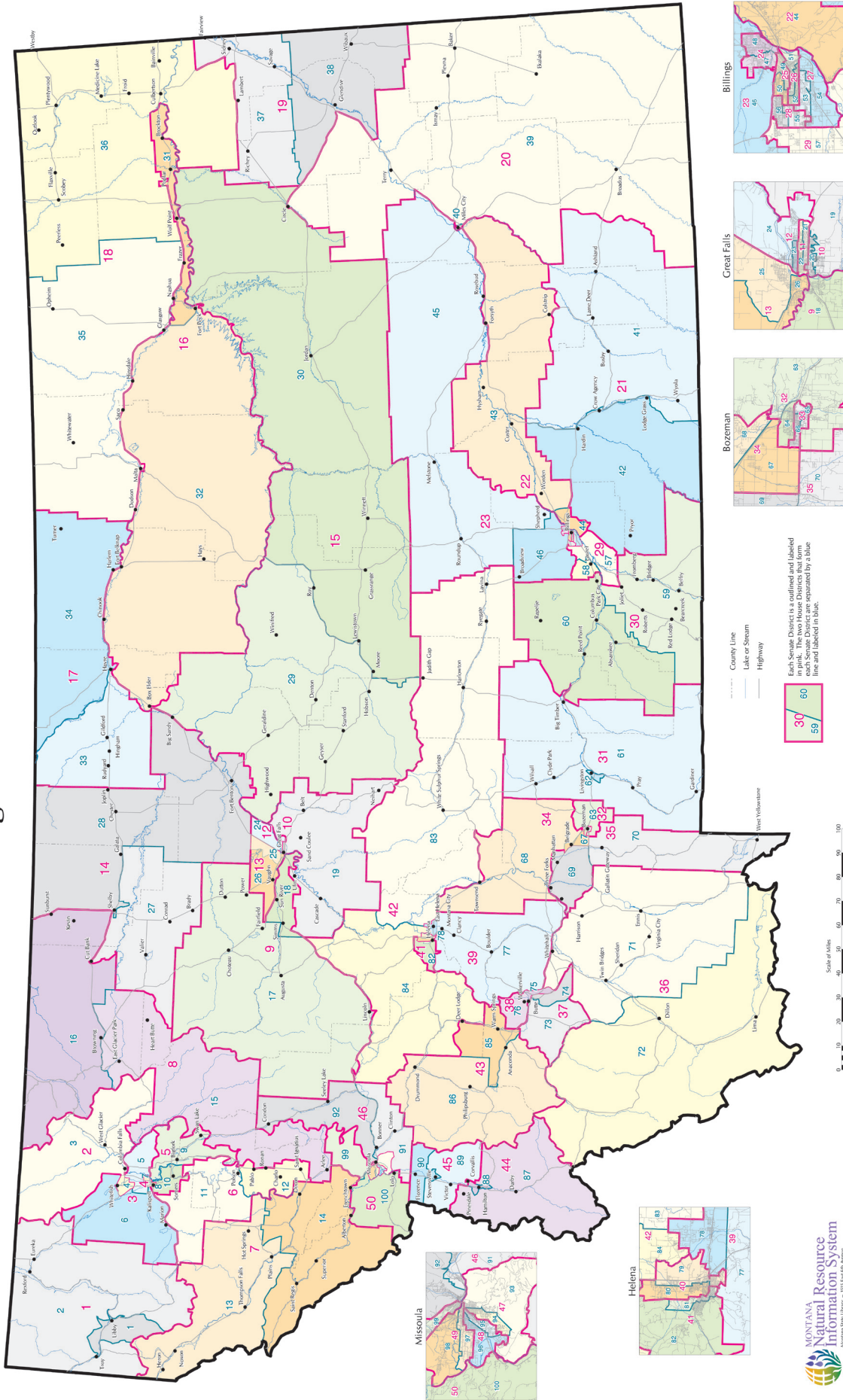
Source: U.S. Census Bureau

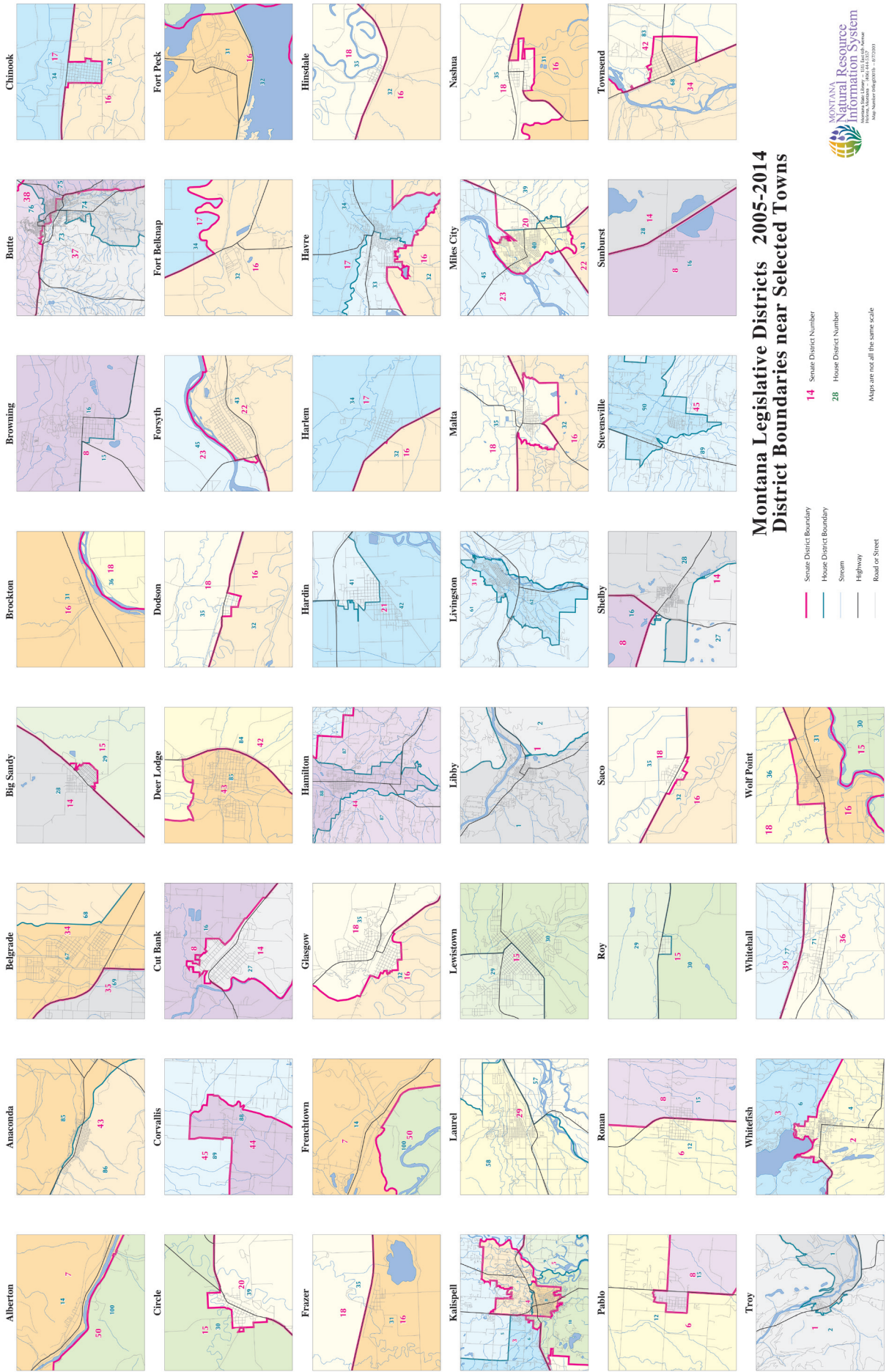
Yellowstone County Index

| | County | Montana | Rank in MT |
|--|-----------|------------|------------|
| Geography | | | |
| Population per square mile 2000 | 49.1 | 6.2 | 1 |
| Households 2000 (complete count) | 52,084 | 358,667 | 1 |
| Persons per household 2000 (complete count) | 2.4 | 2.5 | 27 |
| Resident Population | | | |
| Estimate (July 1) 2006 | 138,213 | 944,632 | 1 |
| Estimate, percent change - April 1, 2000 to July 1, 2006 | 6.9 | 4.7 | 9 |
| Estimate, net change - April 1, 2000 to July 1, 2006 | 8,861 | 42,437 | 3 |
| (April 1) 2000 (complete count) | 129,352 | 902,195 | 1 |
| Under 5 years of age (July 1) 2006 | 9,207 | 57,916 | 1 |
| Under 5 years of age, percent (July 1) 2006 | 6.7 | 6.1 | 11 |
| Under 18 years of age (July 1) 2006 | 33,095 | 217,848 | 1 |
| Under 18 years of age, percent (July 1) 2006 | 23.9 | 23.1 | 12 |
| 65 years and over (July 1) 2006 | 18,737 | 130,592 | 1 |
| 65 years and over, percent (July 1) 2006 | 13.6 | 13.8 | 45 |
| Total females, percent (July 1) 2006 | 51.0 | 50.0 | 4 |
| White alone (July 1) 2006 | 128,230 | 858,140 | 1 |
| Black alone (July 1) 2006 | 1,300 | 4,094 | 1 |
| American Indian and Alaska Native alone (July 1) 2006 | 5,324 | 60,725 | 5 |
| Asian alone (July 1) 2006 | 968 | 5,699 | 2 |
| Native Hawaiian and Other Pacific Islander alone (July 1) 2006 | 85 | 527 | 2 |
| Population 5 years and over, percent speaking language other than English at | 5 | 5 | 22 |
| Civilian noninstitutionalized population, 5 years and over, with a disability 2000 | 21,017 | 145,732 | 1 |
| Vital Statistics | | | |
| Births 2004 | 1,867 | 11,519 | 1 |
| Deaths 2004 | 1,167 | 8,094 | 1 |
| Infant deaths under one year 2004 | 4 | 52 | 6 |
| Population 5 years and over by residence in 1995 - percent in same house 2000 (sample) | 52.3 | 53.6 | 52.0 |
| Percent foreign born population 2000 (sample) | 1.4 | 1.8 | 38 |
| Education | | | |
| Educational attainment - persons 25 years and over - percent high school graduate or higher 2000 | 88.5 | 87.2 | 8 |
| Educational attainment - persons 25 years and over - percent bachelor's degree or higher 2000 | 26.4 | 24.4 | 6 |
| Income/Poverty | | | |
| Per capita income in 1999 | 19,303 | 17,151 | 1 |
| Median household income 2004 | 41,255 | 35,574 | 5 |
| People of all ages in poverty - percent 2004 | 12 | 14 | 36 |
| Personal Income (NAICS) 2005 | 4,537 | 27,122 | 1 |
| Per capita personal income (NAICS) 2005 | 33,215 | 29,015 | 1 |
| Federal | | | |
| Federal Government expenditure - total FY 2004 | 752,991 | 7,493,567 | 3 |
| Federal Government expenditure per capita FY 2004 | 5,589 | 8,085 | 50 |
| Housing | | | |
| Housing unit estimates as of July 1, 2006 | 58,206 | 432,023 | 1 |
| Housing unit estimates - net change, April 1, 2000 (base) to July 1, 2006 | 3,643 | 19,390 | 3 |
| Housing unit estimates - percent change, April 1, 2000 (base) to July 1, 2006 | 6.7 | 4.7 | 4 |
| Owner-occupied housing units - percent of total occupied housing units 2000 (complete count) | 69.2 | 69.1 | 44 |
| Median value of specified owner-occupied housing units 2000 (sample) | 101,900 | 99,500 | 10 |
| Housing units by units in structure - multiple units 2000 (sample) | 19.9 | 15.70 | 5 |
| New private housing units authorized by building permits - total 2006 (20,000-place universe) | 675 | 4,542 | 2 |
| Valuation of new private housing units authorized by building permits 2006 | 107,283 | 723,109 | 3 |
| Employment/Business | | | |
| Civilian labor force 2006 | 78,575 | 493,842 | 1 |
| Civilian labor force unemployment 2006 | 2,074 | 15,680 | 1 |
| Civilian labor force unemployment rate 2006 | 2.6 | 3.2 | 50 |
| Employment in all industries (NAICS) 2005 | 98,052 | 613,425 | 1 |
| Employment in all industries (NAICS), net change 2000 (SIC)- 2005 | 8,852 | 54,370 | 2 |
| Employment in government and government enterprises (NAICS) 2005 | 9,450 | 92,756 | 3 |
| Earnings in all industries (NAICS, no code) 2005 | 3,698,137 | 19,787,993 | 1 |
| Earnings in all industries (NAICS, no code), average earnings per job 2005 | 37,716 | 32,258 | 2 |
| Average travel time to work for workers 16 years and over not working at home 2000 | 17.9 | 17.7 | 25 |
| Private nonfarm establishments 2005 | 5,263 | 35,736 | 1 |
| Private nonfarm employment for pay period including March 12, 2005 | 65,781 | 326,887 | 1 |
| Private nonfarm employment for pay period including March 12, 2005, percent change 2000-2005 | 11.7 | 10.40 | 14 |
| Nonemployer: total (NAICS 00) establishments, 2005 | 10,572 | 80,851 | 1 |
| Accommodation and Food Services: total (NAICS 72) - sales of establishments with payroll 2002 | 274,959 | 1,537,986 | 1 |
| Total number of firms 2002 | 14,009 | 100,402 | 1 |
| Manufacturing: total (NAICS 31-33) - value of shipments 2002 | 2,128,044 | 4,987,577 | 1 |
| Wholesale trade: total (NAICS 42) - sales of establishments with payroll 2002 | 0 | 7,223,420 | 56 |
| Retail trade: total (NAICS 44-45) - sales of establishments with payroll 2002 | 1,944,727 | 10,122,625 | 1 |
| Retail trade: total (NAICS 44-45) - sales of establishments with payroll per capita 2002 | 14,738 | 11,116 | 3 |
| Land in farms (NAICS) 2002(acres)(not adjusted) | 1,568,637 | 59,612,403 | 13 |

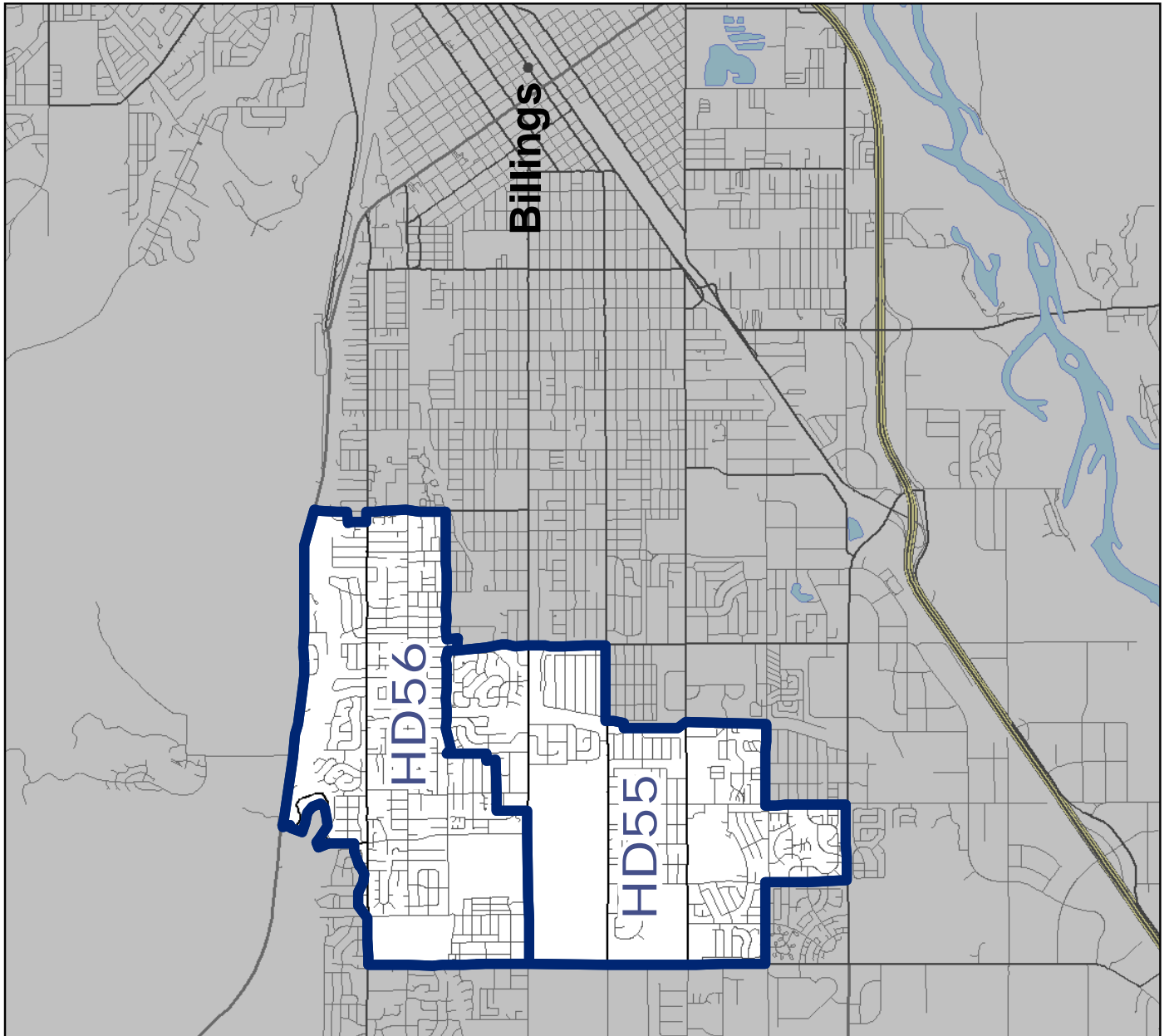
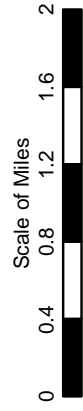
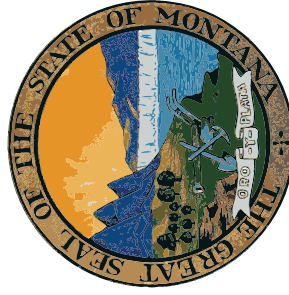
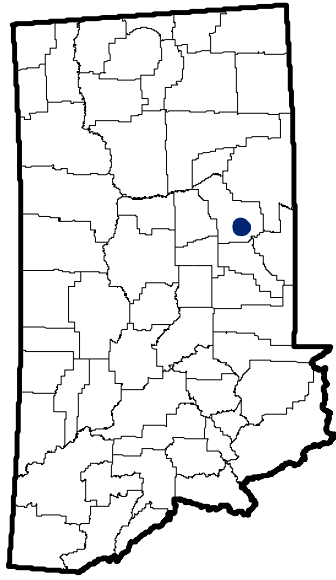
Source: U.S. Census Bureau

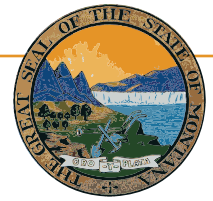
Montana Legislative Districts 2005-2014





Montana Senate District 28





Montana State Library

1515 East 6th Avenue
PO Box 201800
Helena, MT 59620
(406) 444-3115

<http://msl.mt.gov>

Statewide Library Resources

- 5,000+ Online Magazines
- Ask Montana
- **Montana Shared Catalog**
 - 91 participating libraries
 - 2.3 million items
- **Montana Library Directory**

<http://mymontanalibrary.org>

<http://askmontana.org>

http://msl.mt.gov/For_Librarians/Library_Directory

Montana State Digital Library

- **Library Information Services**
 - Electronic Reference Materials
 - Online Magazines & Journals
 - Montana State Library catalog
 - Research Databases
 - Digital State Publications
- **Natural Resource Information System**
 - Maps and Geographic Information
 - Montana Digital Atlas/Map Gallery
 - Online maps & databases
 - Water Information
 - Montana GIS Portal
- **Natural Heritage Program**
 - Montana Field Guide
 - Animal, plant, and habitat information
 - Natural Heritage Tracker

http://msl.mt.gov/for_state_employees/journals.asp

<http://msl.mt.gov/msc>

http://msl.mt.gov/For_State_Employees/Find_Databases

http://msl.mt.gov/for_state_employees/State_Publications

<http://nris.mt.gov>

<http://nris.mt.gov/gis>

<http://nris.mt.gov/interactive.html>

<http://nris.mt.gov/wis>

<http://gisportal.mt.gov/Portal/>

<http://mtnhp.org/>

<http://fieldguide.mt.gov/>

<http://mtnhp.org/Tracker>

Montana Talking Book Library

- 60,000+ titles circulated to 3,000+ patrons
- State of the art digital recording booth: 800+ Montana recorded books
- On-line catalogs and services – WebOpac WebBraille
- Descriptive video collection and newspaper services
- Braille Books: TwinVision and embossed

http://msl.mt.gov/talking_book_library

<http://www.klasweb.msl.mt.gov>

Montana State Library In-House Partners

- **Montana Fish, Wildlife & Parks**
- **Natural Resources Conservation Service**

<http://fwp.mt.gov>

<http://www.mt.nrcs.usda.gov/>

Legislative Snapshot

- This booklet is available online with live links and will be updated regularly as new data becomes available.

http://msl.mt.gov/legislative_snapshot/