

Legislative Snapshot 2009

Includes information for the State of Montana,
Senate District 20, and House Districts 39 and 40.

http://msl.mt.gov/legislative_snapshot/



Senate District 20

Senator Keith Bales (R)

7 Quietus Road
Otter, MT 59062-9409



House District 39

Representative Lee Randall (R)

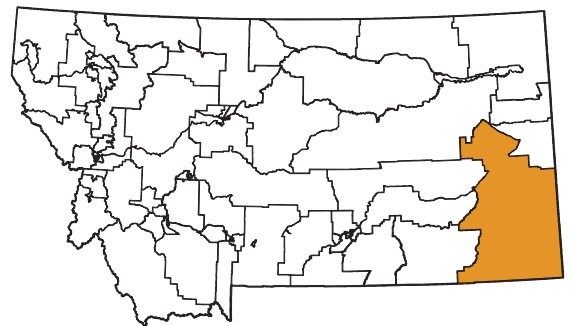
101 Randall Lane
Broadus, MT 59317-9519



House District 40

Representative Bill Mcchesney (D)

316 Missouri Avenue
Miles City, MT 59301-4140



Letter from the Montana State Librarian

On behalf of the Montana State Library, I would like to welcome you to the 2009 legislative session. Our information experts have compiled this booklet to be a resource to you as you take on the important work of representing the collective needs of all Montanans and the special needs of your district during this legislative session.

As in past editions, we have included a wide range of information that, after reviewing proposed bills and following national and state trends through various mediums, we believe will likely be major themes in this legislative session. To that end, you will find up-to-the-minute information on our state's economy, energy production and development, and land and water use. Education is always an important issue, and you will find relevant information on our state's public schools and test scores, as well as on the libraries that help to augment what our schools do. Fire and drought have continued to ravage certain parts of Montana, and you will be able to take a look at the most current information available on maps created here at the State Library. Finally, wildlife and recreation will always be an important part of Montana life, and we've pulled several highlights from our collection that might help to guide your decision-making this session.

The Montana State Library is a small and very unique agency. We employ not only librarians, but GIS specialists and cartographers and partner with botanists and zoologists, as well as federal and state agencies. We manage an enormous collection of state publications, as we simultaneously work to ensure that Montana's blind and physically disabled have access to reading materials and information.

We created this book for you to demonstrate the power of what a diverse staff with amazingly diverse skills can do to make information in many different forms available to every Montanan. We are very proud of what we do here at the State Library as we work to empower Montanans by providing access to information, enhancing learning in families and communities, and building 21st Century skills.

We hope that you use this book throughout the session and stop by to see us – in person or virtually. Whether you visit us at our facility or online, you will be able to browse our collection of government information, get help researching a specific issue, or find a quiet place to work or meet with colleagues. We are located one block east of the Capitol, behind the Historical Society, at the north end of the Justice building. And of course, our services are available 24 hours a day, seven days a week at <http://msl.mt.gov>.

Sincerely,



Darlene Staffeldt
Montana State Librarian



Senate District 20 House District 39 House District 40

Table of Contents

2	Recent Performance of the Montana Economy and its Industries
6	Montana Notable Rankings
7	Demographics
8	Education
9	Libraries
11	Land
12	Water
13	Fire and Drought
14	Energy, Mines
15	Wildlife and Recreation

Appendices

- i Library Directory
- iii State of Montana Index

Senate District 20 County Indexes

- iv Carter County
- v Custer County
- vi Dawson County
- vii Fallon County
- viii McCone County
- ix Powder River County
- x Prairie County

Maps

- xi Legislative Districts
- xiii Senate District 20

Recent Performance of the Montana Economy and its Industries

Source: Montana Department of Labor, Research and Analysis Bureau

Montana has been outperforming the nation in terms of employment growth, wage growth, and unemployment since 2001. Montana's unemployment rate fell below the national rate in 2001 and has remained lower ever since. Montana's annual unemployment rate in 2007 was the 8th lowest in the nation.

Montana's economy has also outperformed the nation in terms of employment growth. Over the 1997-2007 time period, employment in Montana grew at an annual compounding growth rate of 2.1% compared to a national rate of only 1.1%. Job growth in Montana has been speeding up in recent years. Employment grew at a compounding rate of 2.4% annually over 2002-2007, then at a compounding rate of 2.8% annually from 2005-2007.



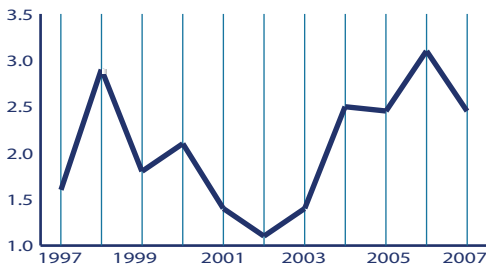
employment and earnings for business owners in addition to payroll workers.

Government, which includes federal, state, and local government and school districts, is an important part of the Montana economy. Government is the largest employer in the state, totaling 14.6% of the jobs in the state. Government constitutes 15.6% of the state's GDP and provides 22% of the state's personal income earned from work. While the GDP and personal income attributed to government work has grown at about 5.5% per year since 2004, employment in this industry has not increased. Government employment has a 0% growth rate since 2004.

As for private industry, the Montana economy can be divided into three categories based on their roles in the economy: base industries, consumer-based industries, and business-support industries. Base industries bring new money into Montana

through exports and can drive growth in other industries through this increase in wealth. In Montana, the base industries are generally natural-resource-based and include agriculture, wood products, manufacturing, energy, and the mining of metals, oil and gas, coal, and other substances. Tourism is also partially a base industry to the extent that it brings new money into Montana, although many of the state's tourists come from within the state. Although employment in base industries is not large, base industries usually pay higher wages than other industries,

Montana Change in Total Employment



Source: Quarterly Census of Employment and Wages (QCEW) Program

Average wages in Montana have also been on the rise, outpacing both inflation and the national average since 2005. Increasing real wages are good news for workers and businesses alike. Workers can increase their standard of living, while businesses benefit because workers have more money to buy goods and services.

There is not one particular industry that was responsible for the recent economic growth in Montana – all industries have been experiencing growth. The following paragraphs examine the performance of Montana's industries in recent years using the Bureau of Economic Analysis (BEA) data for state Gross Domestic Product (GDP), employment, and personal income earnings from work. The BEA data includes an estimate of

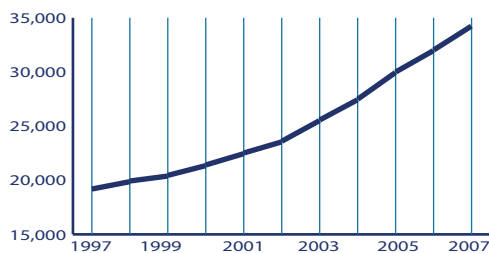
2007 Montana Annual Employment Averages

	Units		Employed	
	Count	Change from 2006	Count	Change from 2006
Total All Industries	42,386	3.4	436,695	2.5
Total Private	40,177	3.4	356,765	3.0
Agriculture, Forestry, Fishing & Hunting	950	1.2	4,532	2.3
Mining	410	8.2	7,474	2.4
Utilities	233	0.9	3,045	2.6
Construction	6,359	5.7	32,286	7.0
Manufacturing	1,381	0.7	20,437	1.3
Wholesale Trade	2,286	3.0	16,938	2.5
Retail Trade	4,816	1.3	58,388	4.0
Transportation And Warehousing	1,304	4.3	11,017	2.1
Information	783	1.8	7,621	-1.5
Finance And Insurance	2,059	6.4	15,556	-2.5
Real Estate And Rental And Leasing	1,823	5.1	6,027	-0.4
Professional And Technical Services	4,097	3.9	19,004	2.3
Management Of Companies And Enterprises	113	18.9	1,438	17.7
Administrative And Waste Services	2,001	5.9	20,264	11.3
Educational Services	398	5.9	4,080	-0.4
Health Care And Social Assistance	3,171	4.5	54,270	2.2
Arts, Entertainment, And Recreation	1,225	4.2	11,425	5.6
Accommodation And Food Services	3,276	-0.8	46,738	1.7
Other Services	3,310	1.0	15,980	0.9
Total Government	2,210	3.8	79,931	0.0

Source: Department of Labor and Industry, Research and Analysis Bureau

making these jobs contribute more to personal income and GDP growth than other jobs. The industries of farming, forestry, mining, utilities, and manufacturing made up 11.8% of the employment in Montana, but 13.3% of personal income and 17.1% of the state's GDP in 2006.

Montana Historical Gross Domestic Product (GDP)
(millions of current dollars)



Source: U.S. Department of Commerce, Bureau of Economic Analysis

Of these base industries, mining has been the fastest growing industry for GDP in Montana in recent years, largely because of increased prices for metals, oil, gas, and energy. Mining represents 6.8% of the state's GDP, but has a growth rate of 24% over the 2005 to 2007 period. Mining employs 1.4% of workers in Montana, and has a growth rate for employment of 7% from 2004 to 2006.

While the natural-resource-based industries have traditionally been the driver of the Montana economy, consumer- and service-based industries are becoming increasingly important, particularly in the fast-growing Western portion of Montana. Consumer-based industries are industries where growth depends on an increase in population or income, such as construction, retail, health care, or entertainment. Continued growth in these industries relies on continued population and wage growth.

Consumer-based industries tend to be large employers, but usually pay lower wages because of a predominance of lower-skilled jobs. For example, retail trade is the largest private industry in Montana for employment, employing over 75,000 workers. However, many of the jobs in the retail industries are low-skilled and low-wage. The consumer-based industries of real estate, construction, health care, education, retail, accommodation, services,

and entertainment comprise 52.7% of the employment in Montana, and produce 41.4% of the state's GDP and 40.6% of the personal income from work earnings in 2006.

In recent years, real estate and construction have played large roles in the growth of Montana's economy. Real estate is the largest private industry in the production of state GDP, representing 10.7% of the state's GDP. The real estate industry has experienced a GDP growth rate of 4.8% over the last two years – slower than the industry average. Construction was the fastest growing employer, adding 10.3% of jobs from 2004-2006 and comprising 8.5% of Montana's jobs in 2006. However, these two industries have been impacted by the national slowdown in housing and will likely experience slower growth in the upcoming years.

The health care industry continues to grow in importance in the Montana economy. After government and retail trade, health care is the third largest industry in terms of employment, with 10.1% of Montana's workers within the industry. Health care provides 11.9% of the state's earnings from work and 8.9% of the state's GDP.



Montana Employment Projections Top 20 Fastest Growing Industries

	Industry	2006	2016	Change	% Change	Growth Rate %
	Total, All Industries	523,362	621,092	97,730	18.7	1.7
1	Total Self-Employed and Unpaid Family Workers	95,014	104,375	9,361	9.9	0.9
2	Self-employed workers, primary job	94,516	103,929	9,413	10	1
3	Education and Health Services	94,512	112,973	18,461	19.5	1.8
4	Trade, Transportation and Utilities	89,848	105,889	16,041	17.9	1.7
5	Goods-Producing Domain	64,295	78,564	14,269	22.2	2
6	Leisure and Hospitality	57,267	70,306	13,039	22.8	2.1
7	Retail Trade	56,234	67,011	10,777	19.2	1.8
8	Health Care and Social Assistance	55,986	68,858	12,872	23	2.1
9	Accommodation and Food Services	45,976	55,220	9,244	20.1	1.8
10	Educational Services	38,526	44,115	5,589	14.5	1.4
11	Professional and Business Services	38,246	52,874	14,628	38.2	3.3
12	Public Administration	37,609	40,759	3,150	8.4	0.8
13	Total, All Government	37,609	40,759	3,150	8.4	0.8
14	Food Services and Drinking Places	35,331	41,979	6,648	18.8	1.7
15	Construction	32,392	42,888	10,496	32.4	2.8
16	Financial Activities	22,413	26,741	4,328	19.3	1.8
17	Hospitals	21,939	25,976	4,037	18.4	1.7
18	Manufacturing	20,171	21,063	892	4.4	0.4
19	Professional and Technical Services	18,795	25,007	6,212	33.1	2.9
20	Administrative and Waste Services	18,229	26,044	7,815	42.9	3.6

Source: Department of Labor and Industry, Research and Analysis Bureau

Finally, the third industry category is business support industries, which require a nexus of economic activity to prosper. Business support industries, such as transportation and warehousing, wholesale, management of companies, administrative and waste services, depend on the growth of other industries. Continuing either amenity-driven population growth or economic growth will allow business support industries to prosper. Business support industries comprise 20.8% of Montana's employment, 25.5% of the state's GDP, and 24.2% of personal income from work earnings.

With the recent economic growth, business support industries are some of the fastest growing in the state. The GDP produced by the state's management of companies industry grew at the second fastest rate during 2005-2007 (20.6% annually), followed by administration and waste services with the third fastest growth (15.9% annually). These industries remain small and together comprise only 2.6% of the state's GDP.

In summary, the Montana economy remains fairly reliant on traditional natural-

resource-based industries, particularly mining, to bring in new money into the state. In recent years, consumer-based and service industries have been increasingly important, and now represent the majority of the state's employment. These consumer-based industries rely on amenity-driven population growth and wage growth for continued prosperity. Finally, the business support industries depend on a nexus of population and industry, and have prospered in the rapid economic growth in recent years. All of these industries are interconnected and rely on each other for success.

Challenges to the Montana Economy

National Economic Concerns

During 2006 and 2007, the Montana economy experienced above-average growth in both employment and wages. Using the Quarterly Census of Employment and Wages, payroll employment grew at a rate of 2.5% from 2006 to 2007, with wages growing at a rate of 5.3%.

Following this rapid expansion, a national economic slowdown has impacted the Montana economy during 2008. Montana job growth has been low since the start of 2008, particularly when compared to the rapid growth in previous years. The unemployment rate has increased over one percent since the start of the year. The wood products industry, an important base industry in the Northwestern portion of Montana, has felt the worst impacts. Construction and financial services have also experienced slowdowns, particularly in comparison to the rapid growth in these industries in previous years.

Montana, however, has not been affected by the national slowdown as much as other states. Using unadjusted data on payroll jobs through the first half of 2008, Montana is ranked the third fastest growing state in the U.S. with 5.9% growth in payroll jobs. Alaska and Wyoming are first and second, which indicates that agriculture and oil and gas industries are likely playing a stabilizing role in the economies of these two states and in Montana. High commodity prices for agricultural and energy products encourage growth in

these industries and also help employment in other industries through spillover effects.

Due to more responsible lending and borrowing practices and a strong economy, Montana home prices have remained fairly stable in comparison to other states. According to the Office of Federal Housing Enterprise Oversight, Montana home prices



have risen 3.38% over the year ending June 30, 2008. This increase makes Montana the 8th highest state in the nation for home price increases in the last year. Joining Montana on the top ten list are Wyoming, South Dakota, and North Dakota, whose economies have also been fairly stable in comparison to the rest of the nation.

Regionally, Montana's economic performance is similar to our neighbors, with all of Montana's surrounding states experiencing unemployment increases during 2008. Idaho has experienced the greatest change in its unemployment rate during 2008, followed by Montana and Wyoming, then by the Dakotas. The impact of the national recession is greatest in areas like Idaho and Northwestern Montana that are heavily reliant on the wood products industry, with diminishing effects in agricultural and energy-producing areas.

Aging Workforce

A longer-term challenge for the Montana economy is our aging workforce. According to the U.S. Census Bureau's population projections, the percentage of the Montana population that will be over the age of 65 is expected to reach 25% by 2030, making Montana one of the oldest states in the nation. The aging of our population will likely have obvious impacts on our economy, such as increased demand for health care, greater demand for the arts, and changes in state spending for both education and Medicare.

The aging of the population will also cause significant tightening of Montana's labor force. Again using the U.S. Census Bureau's population projections, the working age population in Montana (ages 18-65) will start to decrease starting in 2014. Without changes to the traditional workplace, Montana businesses may start to experience difficulty finding appropriately trained workers. To meet future job demands, businesses will need to start looking for workers in populations that traditionally have lower workforce participation, such as older workers, women with children, minorities, or non-high school completers. To recruit these workers, businesses will likely need to offer more flexible hours, worker training, or a different mix of benefits than what is traditionally provided. The aging of the Montana population will likely drive changes in Montana's education system as well. There will be fewer young people graduating from Montana high schools and more non-traditional students in the Montana University System. The tightening labor force will likely also increase demand for short-term training programs that allow workers to quickly update their skills for emerging technologies. For example, an

Census 2000 Age and Sex by District

	Montana	Senate District 20	House District 39	House District 40
Total Population	902,195	18,618	9,222	9,396
Percent of Population, Under 18 Years	25.5	25.0	25.1	24.8
Percent of Population, 18 to 24 Years	9.5	7.2	5.6	8.8
Percent of Population, 25 to 44 Years	27.2	25.0	24.1	26.0
Percent of Population, 45 to 64 Years	24.4	24.7	26.8	22.6
Percent of Population, 65 Years and Over	13.4	18.1	18.5	17.8
Median Age (Years)	37.5	40.7	42.3	38.8

Source: U.S. Census Bureau

electrician may need a general background, but will also need short-term training to refine his skills in order to build a wind turbine. Businesses may feel the need to take greater responsibility for job training in order to meet their labor demands, but will likely rely on the state education system to provide standards and certifications.

Regional Imbalance

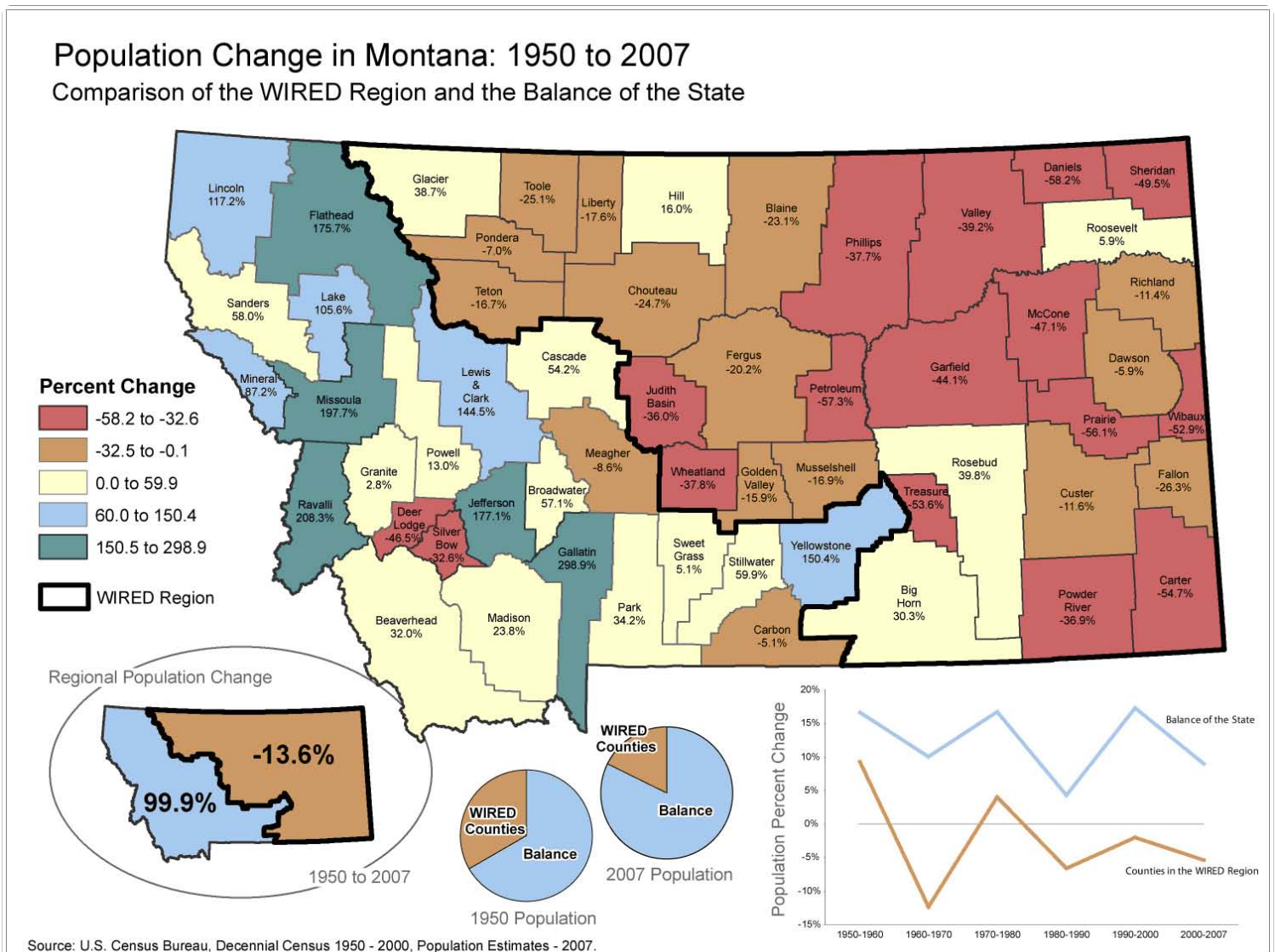
Finally, Montana's economy continues to have regional disparities in prosperity and population growth. Montana remains a fairly rural state, with a population density of 6.5 people per square mile compared to 84.5 people per square mile for the nation (U.S. Census Bureau). In recent years, the population growth in Montana has accelerated, but this population growth

is largely limited to the urban centers and the western portion of Montana. The following map, produced by the Census and Economic Information Center at the Montana Department of Commerce, compares the population change since 1950 in Montana's Workforce Innovation in Regional Economic Development (WIRED) region compared to the balance of the state. The WIRED region is a labor force area designated by the U.S. Department of Labor to receive funding to integrate economic and workforce development. The WIRED region is used here because it includes 32 counties and six Indian Reservations in Eastern and North Central Montana that have been experiencing long-term population and economic declines. Since 1950, the WIRED region has lost 13.6% of

its population; in comparison, the balance of Montana has experienced a population increase of 99.9%. As shown in the graphic below, the population declines are greater in the counties that are further east.

The pattern of population growth (and also economic growth) has also been termed 'the cowboy boot' economy by Governor Brian Schweitzer. Governor Schweitzer's boot economy includes the fast-growing counties of Flathead, Lake, Missoula, Lewis and Clark, Jefferson, Gallatin, and Yellowstone, but also roughly follows the pattern of the WIRED and non-wired counties.

The disparity in population growth between the eastern and western



September 2008 - WIREDPopChange.mxd

portions of the state (or urban or rural, or cowboy-boot or non-boot) has resulted in economic disparities as well. Employment growth in recent years in the nation and in Montana has been driven by consumer-based industries that rely on population increases for economic growth. For example, consumer-based industries in Montana added almost 28,000 jobs to the Montana economy during the 2002 to 2007 period, while natural resource industries only added 3,200 jobs.

per job in the WIRED region in 2007 was \$29,200, while the average wage across the full state was \$32,200. However, the rapid growth in the energy industry has provided hope to reverse these fortunes in the eastern portion of the state in recent years. In fact, wages in the WIRED region have grown at a faster rate than wages in Montana as a whole during the 2000-2007 time period (a compounding annual growth rate of 4.6% compared to 4.1%), despite having slower job growth in the WIRED region, likely due to the addition of high-paying energy jobs.



The lack of consumer-driven industries in the eastern portion of the state has resulted in slow employment growth. Over the 1990-2007 period, the annual compounding rate of job growth in the WIRED region of Eastern and North Central Montana was -0.3% compared to positive growth of 1.8% in the non-WIRED Western and urban counties. The regional disparity also is evident in wages. The average wage

In summary, Montana has large disparity in the economic performance in various areas of the state. The urban centers have experienced strong economic growth, but the rural areas still lag behind in wages and employment. Montana likely will continue to face challenges related to the uneven economic prosperity across the state.

Montana Notable Rankings

	US	Montana	Rank in US
Median age, 2006	36.4	39.2	7
Unemployment rate, April 2008	4.6	3.8	14
Percentage change in home prices, 2005 - 2006	5.59	10.2	8
Percentage of grandparents responsible for their grandchildren	40.5	46.5	22
Percentage of households with one or more people 65 years and over, 2006	23.2	24.4	11
Percentage of children under 6 years old with all parents in the labor force, 2006	61.6	62.0	31
Percentage of people 25 years and over who have completed high school (includes equivalency), 2006	84.1	90.1	4
Percentage of people 16 to 64 years who are in the labor force (including Armed Forces), 2006	74.5	76.0	23
Median monthly housing costs for renter-occupied housing units (dollars), 2006	763	571	46
Percent of housing units that were built in 1939 or earlier, 2006	14.6	18.0	22
Median earnings for full-time, year-round workers (in 2006 inflation-adjusted dollars), 2006	32,649	26,007	49
Median earnings for full-time, year-round workers (in 2006 inflation-adjusted dollars), 2006	42,210	36,378	48
Percentage of civilian population 18 years and over who are veterans, 2006	10.4	14.2	2



- 2.8% of Montanans walk to work, well above the national average.
- Montana ranked 2nd for the percentage of state parks, recreation areas, and natural areas.
- 14% of Montana's civilian population are veterans, placing Montana second in the nation.
- Montana ranked 4th for the percentage of the population 25 and older who graduated from high school.
- Montana has the 4th lowest average travel time to work of any US state.
- Montana ranks 7th in electricity generated from renewable resources.
- Montana residential customers have the 7th lowest electric bill.

Demographics

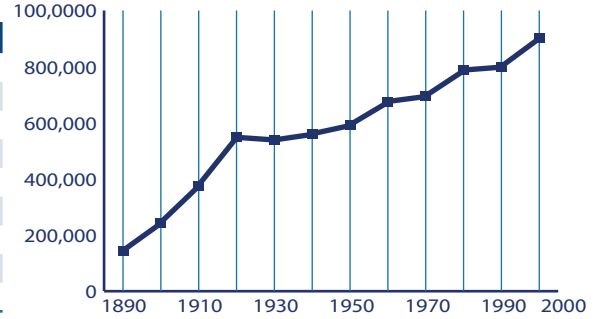
Population Growth in Montana and Selected Counties

Montana's population density is about 6.3 persons per square mile.

	2000 Census	2007 Estimate	Percent Growth
United States	281,421,906	301,621,157	.07
Montana	902,195	957,861	.06
Carter County	1,360	1,268	-6.76
Custer County	11,696	11,188	-4.34
Dawson County	9,059	8,558	-5.53
Fallon County	2,837	2,696	-4.97
McCone County	6,851	7,426	8.39
Powder River County	1,858	1,699	-8.56
Prairie County	1,199	1,044	-12.93

Source: U.S. Census Bureau

Montana Historic Population Growth 1890 - 2000 Censes



Source: U.S. Census Bureau Population

Household Income and Poverty Figures for 2005

Montana ranked 42nd among all U.S. states for median income in 2005.

	Median Household Income	% in Poverty All Ages	% in Poverty Ages < 18
United States	46,242	13.3	18.5
Montana	38,503	14.6	20.2
Carter County	29,496	13.2	16.3
Custer County	33,836	14.8	20.2
Dawson County	36,080	14.0	17.4
Fallon County	37,112	10.1	13.1
McCone County	34,466	11.9	18.5
Powder River County	33,571	11.8	15.4
Prairie County	30,625	13.4	21.2

Source: U.S. Census Bureau

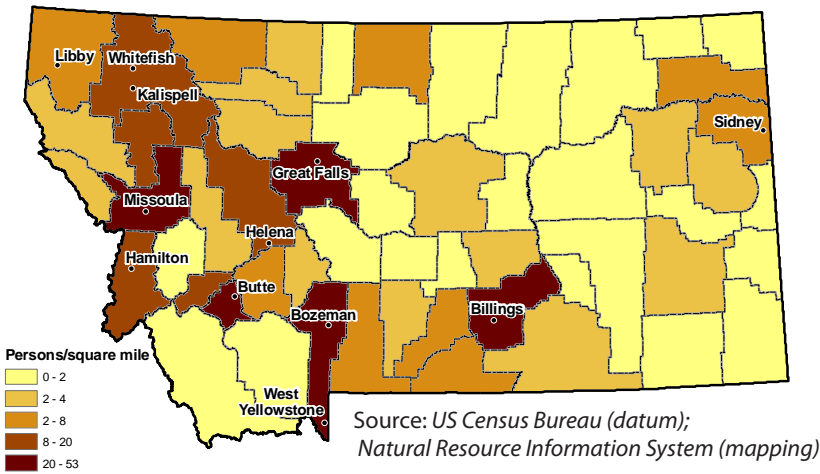


2007 Population Estimates

	Montana
Male	479,633
Under 18 years	112,664
18 to 64 years	306,876
18 years and over	366,969
21 years and over	346,707
62 years and over	75,218
65 years and over	60,093
Female	478,228
Under 18 years	106,834
18 to 64 years	297,909
18 years and over	371,394
21 years and over	353,066
62 years and over	88,126
65 years and over	73,485
Total	957,861

Source: US Census Bureau, Population Estimates Program

2007 Population Density Estimates - Total Persons



Housing Units for Selected Counties

According to the U.S. Census Bureau, the total number of housing units in Montana increased 4.7% during this period.

	2000	2001	2002	2003	2004	2005	2006	2007	Percent Change (2000 - 2007)
Carter County	811	811	810	808	806	808	806	803	-0.99
Custer County	5,360	5,364	5,355	5,346	5,339	5,342	5,334	5,327	-0.62
Dawson County	4,168	4,164	4,156	4,147	4,143	4,151	4,144	4,135	-0.79
Fallon County	1,410	1,410	1,409	1,408	1,411	1,416	1,413	1,409	-0.07
McCone County	1,087	1,086	1,084	1,081	1,079	1,082	1,079	1,076	-1.01
Powder River County	1,007	1,008	1,007	1,005	1,003	1,009	1,006	1,003	-0.40
Prairie County	718	717	715	714	714	715	714	711	-0.97

Source: U.S. Census Bureau

Education

Schools in Senate District 20

There are 828 public K-12 and 14 private accredited schools in Montana. Montana also has 21 public and 3 private colleges. Senate and House district figures in the table below show the number of schools located in cities within 10 miles of the district's boundaries.

	Montana	Senate District 20	House District 39	House District 40
High Schools	171	14	14	4
Middle Schools	213	14	14	4
Elementaries	444	72	72	36
Total	828	100	100	44

Source: Office of Public Instruction Website, November 2009

Montana School Size and Enrollment 2007 - 2008

School Size	Percent of Schools	Enrollment	Percent of Enrollment
>500	6	45,133	31
250 to 499	20	55,441	39
100 to 249	20	26,287	18
50 to 99	15	9,152	6
<50	39	7,392	5
Total	100	143,405	100

Source: Office of Public Instruction, September 2008

School Districts - Percentage of in Area

The following table shows the number of school districts with the appropriate percentages in each area. Five of the elementary districts and none of the high school districts have 100% of their area contained within the boundaries of Senate District 20.

	Senate District 20		House District 39		House District 40	
	Elementary	High School	Elementary	High School	Elementary	High School
0 to 9.999 %	6	5	6	5	2	1
10 to 29.999 %	3	1	3	1	0	0
30 to 49.999 %	0	0	0	0	0	0
50 to 69.999 %	1	1	1	1	0	0
70 to 89.999 %	3	1	3	1	0	0
90 to 99.999 %	12	4	12	4	0	0
100 %	5	0	5	0	0	0
Total	30	12	30	12	2	1

Source: Montana State Library, June 2004

Education Statistics

The data listed below is taken from the 2000 census. Senate and House districts shown are based on the current geographic boundaries thanks to Montana's cooperation with the U.S. Census Bureau.

	Montana	Senate District 20	House District 39	House District 40
Population 5 years and over, Percent who speak a language other than English at home, Total, 2000	5.2	3.8	2.6	5.0
Population 5 years and over, Percent who speak a language other than English at home, And speak English less than "very well", 2000	1.5	0.9	0.7	1.1
Population enrolled in elementary or high school, Percent in private school, 2000	7.0	4.1	2.8	5.3
Population, 16 to 19 years, Percent not enrolled in school and not a high school graduate, 2000	8.0	2.5	1.5	3.5
Population 18 to 24 years, Percent enrolled in college or graduate school, 2000	33.8	23.5	7.7	32.8
Population 25 years and over, Percent with less than a 9th grade education, 2000	4.3	7.7	7.8	7.5
Population 25 years and over, Percent high school graduate or higher, 2000	87.2	84.3	84.5	84.1
Population 25 years and over, Percent with bachelors degree or higher, 2000	24.4	17.1	15.7	18.5
Population 25 to 34 years, Percent with bachelors degree or higher, 2000	26.6	15.4	19.0	12.8

Source: U.S. Census Bureau

National Assessment of Education (NAEP) Progress Historical Performance in Montana Schools

Subject	Grade	Year	State Average	National Average
Mathematics (scale: 0-500)	4	1996 ⁿ	228	222
		2000	228	224
		2003	236	234
		2005	241	237
		2007	244	239
	8	1990 ⁿ	280	262
		1996 ⁿ	283	271
		2000	285	272
		2003	286	276
		2005	286	278
		2007	287	280
Reading (scale: 0-500)	4	1994 ⁿ	222	212
		1998	225	213
		2002	224	217
		2003	223	216
		2005	225	217
	8	2007	227	220
		1998	271	261
		2002	270	263
		2003	270	261
		2005	269	260
		2007	271	261
Science (scale: 0-300)	4	2000	160	145
		2005	160	149
	8	1996 ⁿ	162	148
		2000	164	148
		2005	162	147
Writing (scale: 0-300)	4	2002	149	153
		1998	150	148
	8	2002	152	152
		2007	157	154

ⁿ Accommodations were not permitted for this assessment

Source: National Center for Education Statistics



Libraries

There are 750 libraries in Montana. Senate and House district figures in the table below show the number of libraries located in cities within 10 miles of the district's boundaries. For more detailed information on Montana's libraries visit http://www.msl.mt.gov/For_Librarians/Library_Directory/.

Source: *Montana State Library, December 2008.*

	Montana	Senate District 20	House District 39	House District 40
Public	80	8	7	1
Branches	29	0	0	0
Bookmobiles	3	0	0	0
School	558	41	32	9
Academic	28	3	2	1
Special or Other	52	1	1	1
Total	750	54	42	12

Montana Public Libraries Fast Facts

- **Montana's public libraries hold 3,286,044 items.**
- Montanans visited their public libraries an average of four times throughout the year, for a total of 3,934,580 visits in 2007.
- Montana library patrons checked out 5,606,250 items in 2007, about 6 items per person.
- Librarians in Montana's public libraries fielded 401,180 reference questions in SFY 2007, or 7,715 questions per week.
- 100% of all Montana libraries provide Internet access to patrons
- **Nearly half of all Montanans (424,188) have a library card.**

Montana Talking Book Library

Montana residents who are unable to use standard print materials due to visual, physical and/or reading disabilities may be eligible to borrow recorded books and playback equipment from the Montana Talking Book Library. Eligibility is determined based on National Library Service Standards. Currently, 3,712 Montanans are registered to use this free service.

*All services are provided **FREE** of charge to eligible patrons!*



Talking Book Library volunteers demonstrate the Twin Vision Braille Program.

Source: *Montana Talking Book Library*

Collection

- 67,000+ fiction and non-fiction audio book titles in all genres for all ages
- 80+ audio, Braille, large print and electronic magazines
- 300+ descriptive videos
- 200+ children's Twin Vision books
- Newsline™ telephone audio newspaper service
- Access to Montana Radio Reading newspaper service

**To apply for these FREE services, contact:
(800)-332-3400 Toll Free in Montana
(406) 444-2064 Helena**

Cooperative Free Book Loan Service

- Access to all audio book titles recorded in over 80 regional and sub-regional libraries of the National Library Service

Local Recording and Twin Vision Braille Programs

- Two studios work constantly to record Montana books, magazines, and many other fiction and non-fiction titles. Over 200 Twin Vision (print and illustrated) children's books have been embossed with Braille text.

Online Services

- WebOpac allows users to search the local recording catalog, order items on line and then have them mailed to their door.
- Through WebBraille patrons can download digital Braille books
- The Digital Download Pilot Project allows patrons to download digital audio books. In 2009 the National Library Service (NLS) will unveil its free digital player for use with this service.

Partnerships

- All Montana Public, Academic and Special libraries
- Other organizations include: ophthalmologists, optometrists, Lions Clubs, Blind and Low Vision and Vocational Rehabilitation Services, Low Vision Montana, Blind Support Groups, Veterans facilities, Montana Independent Living Programs, Montana Association for the Blind, as well as all local and national organizations promoting independence to Montanans with visual, physical, and reading handicaps.

Readers' Advisor and Referral Services

- Trained employees conduct book searches to assist patrons in their reading needs and desires. Research is also done for patrons with special needs and appropriate formats are found and referred to the patron for materials needed.

Senate and House district figures in the table below show the number of patrons located in cities within 10 miles of the district's boundaries.

	Montana	Senate District 20	House District 39	House District 40
Total Patrons	3,076	84	84	44
Veterans Who Are Patrons	258	5	5	2
Patron Count by Disability				
Blindness	945	27	27	11
Low Vision	1,435	40	40	20
Physical	267	7	7	5
Reading	435	10	10	8

Source: *Montana Talking Book Library*

Statewide Library Resources

Statewide Library Resources

Statewide Databases



Subscription databases available to all Montana libraries include the Gale Cengage Learning's suite of periodical databases and Ebsco's Auto and Small Engine Repair, Environment Complete and CINAHL, a resource for nursing students.

OCLC



OCLC, Online Computer Library Center, is a nonprofit, membership, computer library service and research organization dedicated to the public purposes of furthering access to the world's information and reducing information costs.

Ask Montana

A free online service for information and research help provided by librarians in Montana and around the world. Since July of 2004 the service has answered more than 4,300 questions.



<http://askmontana.org/>

MontanaLibrary2Go

This service offers library patrons from participating libraries a substantial, continually growing collection of audio, video and music titles from OverDrive, Inc. Content is available for download to personal playing devices.

HeritageQuest

This subscription genealogy database is accessible by all Montana public library patrons and staff. It provides a collection of unique material for both genealogical and historical researchers, with coverage dating back to the late 1700s.

Montana Memory Project

The Montana Memory Project provides access to digital collections and items relating to Montana's cultural heritage and government.



Source: *Montana Historical Society Photo Archive, Montana Memory Project*

Participating Libraries

Senate and House district figures in the table below show the number of libraries located in cities within 10 miles of the district's boundaries.

	Montana	Senate District 20	House District 39	House District 40
Statewide Databases	750	42	42	12
OCLC	249	12	12	3
Ask Montana	20	0	0	0
MontanaLibrary2Go	21	3	3	2
HeritageQuest	80	7	7	1
Montana Memory Project	12	2	2	2

Source: *Montana State Library*

Statewide Library Training

In order to help Montana libraries provide the highest quality of service to patrons, the Montana State Library offers a certification program and a variety of continuing education and training opportunities for Montana librarians, library staff, and trustees.



Total Attendees (56 online) 1,318
 Number of Workshops (23 online) 113
 Number of different Montana locations 44

Time period: October 2007 through September 2008

Source: *Montana State Library*

Montana Shared Catalog Statistics

The Montana Shared Catalog helps Montana libraries meet today's library users demands. It gives Montanans a rich and easy-to-use catalog including more than 2.3 million items which patrons circulated 2,843,665 times from September 2007 to August 2008. Additional groups that partner to share their catalogs include the 4 Rivers, BridgerNet, and Partners groups. Senate and House district figures below show the number of libraries located in cities within 10 miles of the district's boundaries.

Source: *Montana Shared Catalog*

	Montana	Senate District 20	House District 39	House District 40
Participating Libraries	91	7	7	6
Patrons	271,880	16,879	16,879	11,536
Items	2,304,415	204,204	204,204	166,946
Partner Group Libraries	28	3	3	2



Montana Shared Catalog Senate District 20 Public and Branch Libraries

Miles City Public Library - *Miles City*

Glendive Public Library - *Glendive*

School librarian Linda Gardner congratulates the first student to check out a book through the newly activated Montana Shared Catalog system at Alberton School Library.

Land

Land Ownership

Senate District 20 number 2 in size and is 12,463.566 square miles, or about 8% of Montana's total land area (146,923.075 square miles). The average senate district in Montana is 2,938 square miles and the average house district is 1,469.

Owner	Montana		Senate District 20		House District 39		House District 40	
	Area (Sq Mi)	%	Area (Sq Mi)	%	Area (Sq Mi)	%	Area (Sq Mi)	%
Private	83,975.739	57.156	8,908.273	71.475	8,902.669	71.462	5.604	98.749
Local Government	30.275	0.021	1.054	0.008	1.054	0.008	0.000	0.000
Tribal Land and BIA Trust	8,430.944	5.738	0.829	0.007	0.829	0.007	0.000	0.000
Water	1,319.568	0.898	6.646	0.053	6.576	0.053	0.070	1.232
Montana Fish, Wildlife and Parks	467.888	0.318	0.390	0.003	0.389	0.003	0.000	0.008
State Trust Land	8,060.125	5.486	850.845	6.827	850.845	6.830	0.000	0.000
Other State Land	114.762	0.078	0.005	0.000	0.005	0.000	0.000	0.000
US Bureau of Land Management	12,520.011	8.521	2,469.263	19.812	2,469.263	19.821	0.000	0.000
US Fish and Wildlife Service	1,432.092	0.975	0.000	0.000	0.000	0.000	0.000	0.000
US Forest Service	26,403.777	17.971	226.212	1.815	226.212	1.816	0.000	0.000
US National Park Service	1,832.048	1.247	0.000	0.000	0.000	0.000	0.000	0.000
Other Federal Land	369.170	0.251	0.049	0.000	0.049	0.000	0.001	0.012
Plum Creek Timber Lands	1,966.676	1.339	0.000	0.000	0.000	0.000	0.000	0.000
Total	146,923.075		12,463.566		12,457.891		5.675	

Source: Montana Natural Heritage Program, August 2008

Private Land Agricultural Use

Owner	Montana		Senate District 20		House District 39		House District 40	
	Acres	%	Acres	%	Acres	%	Acres	%
Continuous Crop	37,496.664	0.065	0.000	0.000	0.000	0.000	0.000	0.000
Fallow Crop	12,743,190.043	22.240	619,736.745	10.055	619,633.045	10.054	103.700	14.899
Farmstead	54,950.000	0.096	1,851.000	0.030	1,842.000	0.030	9.000	1.293
Grazing	37,017,002.816	64.604	5,338,332.359	86.613	5,337,931.449	86.616	400.910	57.600
Irrigated	1,641,330.911	2.865	30,260.640	0.491	30,078.230	0.488	182.410	26.208
Timber	5,006,817.111	8.738	62,273.230	1.010	62,273.230	1.010	0.000	0.000
Wild Hay	797,870.640	1.392	110,990.179	1.801	110,990.179	1.801	0.000	0.000
Total	57,298,658.19		6,163,444.15		6,162,748.13		696.02	

Source: Montana Department of Administration Information Technology Services Division

Conservation Easements (Acres)

	Montana	Senate District 20	House District 39	House District 40
Bitter Root Land Trust	690.02	0.00	0.00	0.00
City Government	600.54	0.00	0.00	0.00
Clark Fork- Pend Oreille Conservancy	151.16	0.00	0.00	0.00
County Government	527.62	0.00	0.00	0.00
Ducks Unlimited (Wetlands America Trust)	15,362.12	0.00	0.00	0.00
Five Valleys Land Trust	33,710.48	0.00	0.00	0.00
Flathead Land Trust	6,961.13	0.00	0.00	0.00
Gallatin Valley Land Trust	32,137.65	0.00	0.00	0.00
Montana Department of Transportation	508.49	0.00	0.00	0.00
Montana Fish, Wildlife, and Parks	379,062.50	32,802.72	32,802.72	0.00
Montana Land Reliance	779,823.97	0.00	0.00	0.00
National Wildlife Federation	19.65	0.00	0.00	0.00
Prickly Pear Land Trust	985.46	0.00	0.00	0.00
Rattlesnake Land Trust	189.54	0.00	0.00	0.00
Rocky Mountain Elk Foundation	47,466.24	0.00	0.00	0.00
Salish and Kootenai Tribe	102.40	0.00	0.00	0.00
The Bighorn Institute	1,443.39	0.00	0.00	0.00
The Nature Conservancy	279,256.25	0.00	0.00	0.00
The Vital Ground Foundation	673.83	0.00	0.00	0.00
US Bureau of Reclamation	41.61	0.00	0.00	0.00
US Department of Agriculture	14,281.37	0.00	0.00	0.00
US Fish and Wildlife Service	207,447.07	0.00	0.00	0.00
US Forest Service	8,875.86	0.00	0.00	0.00
Total	1,810,318.34	32,802.72	32,802.72	0.00

Source: Montana Natural Heritage Program

Montana GIS Portal

Additional geographic datum and maps are available through the Montana GIS Portal at <http://gisportal.mt.gov/Portal/>. The new portal provides access to more than 400 databases and over 200 sample maps from the collections of the Montana Base Map Service Center, the Montana State Library, Montana Fish, Wildlife and Parks, and Flathead County.



Water Well Development

There are approximately 195,453 water wells in Montana. 55% of Montana's wells were drilled prior to 1990. 24% were drilled in the 1990's and 21% were drilled since the year 2000.

Year	Montana		Senate District 20		House District 39		House District 40	
	Count	Avg Depth (ft)	Count	Avg Depth (ft)	Count	Avg Depth (ft)	Count	Avg Depth (ft)
Pre 1990	106,736	120.66	7,192	165.71	7,010	231.51	182	99.91
1990 - 1999	47,608	122.33	782	137.03	722	190.89	60	83.18
2000 - 2007	41,109	135.18	977	139.84	913	218.08	64	61.59
Total	195,453	126.05	8,951	147.53	8,645	213.49	306	81.56

Source: Montana Bureau of Mines and Geology's Ground Water Information Center (GWIC). This data was drawn from the GWIC database in July 2007.

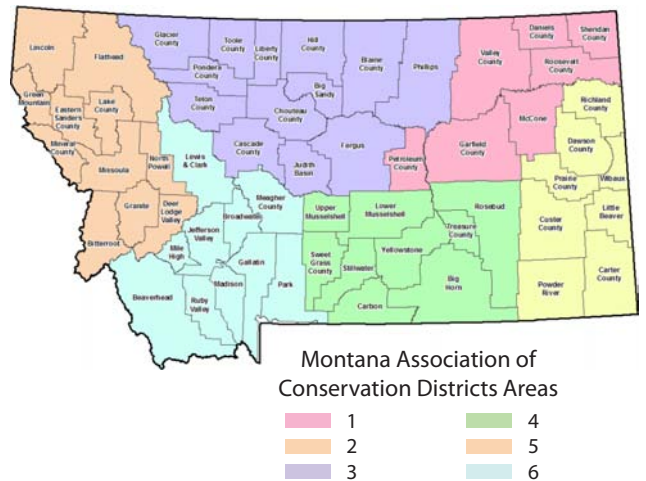
Water Rights

There are 299,021 water rights in Montana. The Department of Natural Resources and Conservation maintains a database of water rights to assist Montana citizens and the Montana Water Court in the water rights adjudication process.

Type	Montana	Senate District 20	House District 39	House District 40
62-73 Ground Water	181	5	5	0
Compact	263	1	1	0
Conservation District	234	80	80	0
Exempt Right	6,248	154	152	2
Ground Water Certificate	76,476	2,711	2,635	76
Inter-State Claim	7	0	0	0
Irrigation District	211	0	0	0
Powder River Declaration	8,015	8,014	8,014	0
Provisional Permit	9,113	673	672	1
Reserved Claim	3,558	2	2	0
Statement of Claim	182,211	12,812	12,777	35
Stockwater Permit	3,580	687	687	0
Temporary Permit	13	2	2	0
Water Reservation	8,911	519	518	1
Total	299,021	25,660	25,545	115

Source: Montana Department of Natural Resources and Conservation, Natural Resource Information System, September 2008.

Montana Conservation Districts



Source: Natural Resource Information System, Department of Natural Resources and Conservation, January 2008

Public Water Supplies

There are 3,266 public water supplies located in the State of Montana, 47 of which are located in Senate District 20. These figures do not include public water supplies serving Native American nations.

	Count
House District 39	
Public, community	19
Public, non-community, non-transient	2
Public, transient	21
House District 40	
Public, community	2
Public, transient	3

Source: Department of Environmental Quality, December 2007



Dams in Senate District 20

There are 3,666 dams in Montana. Predominant uses are stock/farm ponds (48%) and irrigation (22%).

Source: National Inventory of Dams, USGS Geographic Names Information System

Type	Montana	Senate District 20	House District 39	House District 40
Debris Control	1	0	0	0
Fish and Wildlife Pond	1	0	0	0
Flood Control	43	4	4	0
Hydroelectric	26	0	0	0
Irrigation	822	97	97	0
Recreation	54	2	2	0
Stock/Small Farm Pond	1,771	225	225	0
Tailings	8	0	0	0
Water Supply	44	0	0	0
Other	68	1	1	0
Unknown	828	99	99	0
Total	3,666	428	428	0

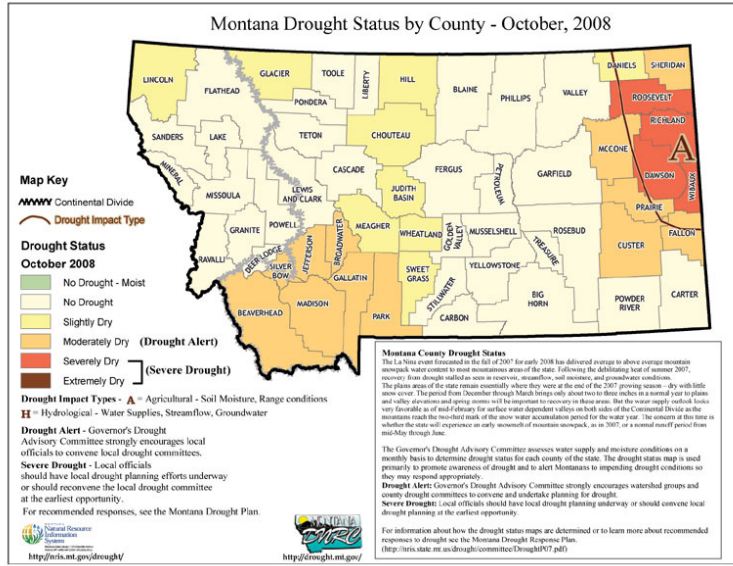
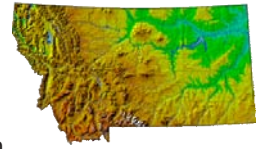
Montana Drought Resources

The Montana Governor's Drought Advisory Committee is charged with monitoring, forecasting, and reporting water supply and moisture conditions, enabling Montanans to make timely and informed decisions to mitigate drought impacts in a proactive manner.

For up to date information and maps on Montana's current drought situation visit <http://drought.mt.gov/default.asp>.

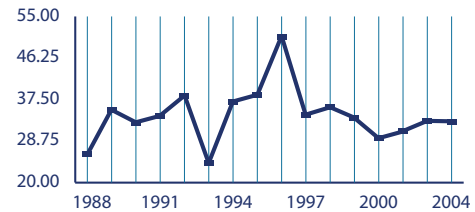
Montana Digital Atlas

Additional mapping and data capabilities are available through the Montana State Library at <http://nris.mt.gov/>. The Montana Digital Atlas provides unlimited access to detailed information on such issues as climate, environmental impacts, land information, water, and cultural data.



Source: Natural Resource Information System

Montana Yearly Average Precipitation (1988 - 2004)



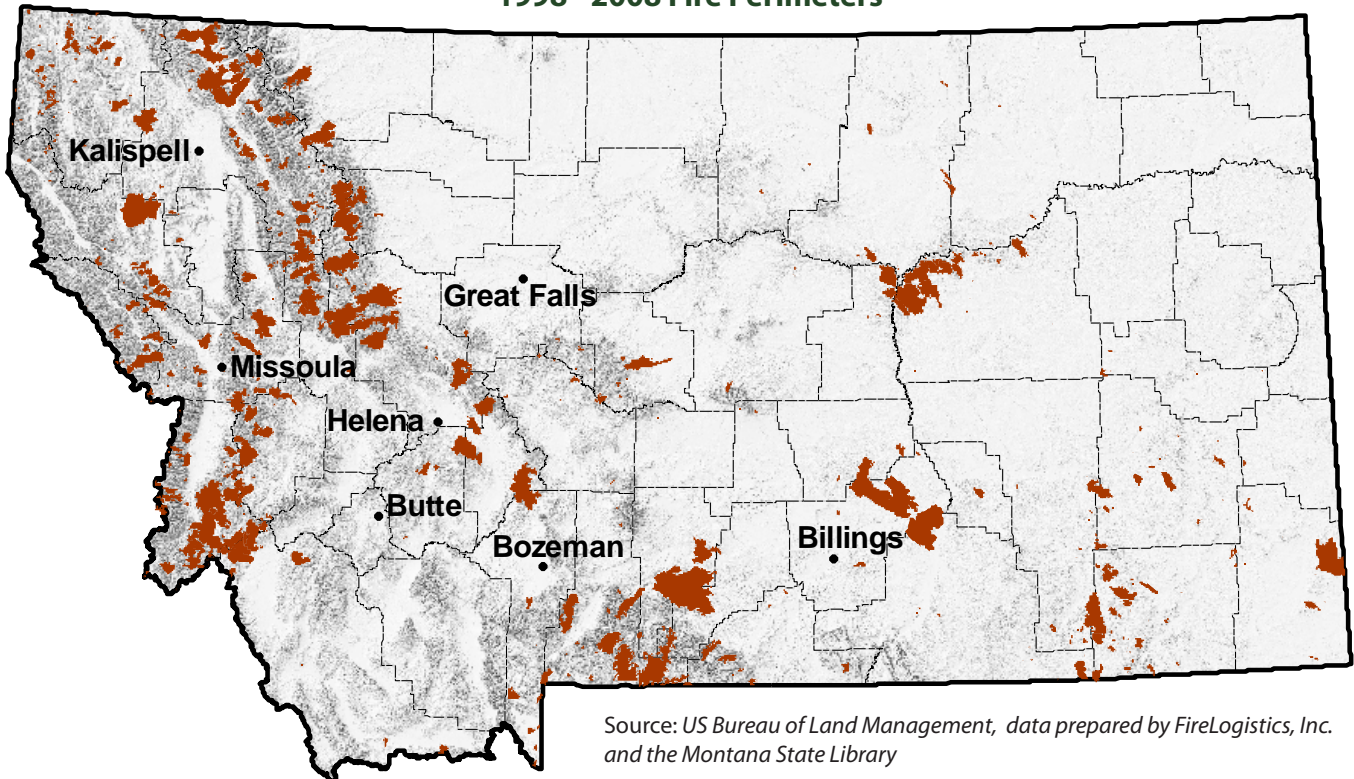
Source: Natural Resources Conservation Service

Montana Fires 2002 - 2007 All Fires from All Agencies

Year	Count	Acreage
2002	1,372	110,309
2003	2,326	736,809
2004	1,447	18,445
2005	1,316	103,294
2006	2,302	1,047,118
2007	1,875	778,079

Source: Department of Natural Resources and Conservation

1998 - 2008 Fire Perimeters



Source: US Bureau of Land Management, data prepared by FireLogistics, Inc. and the Montana State Library

Energy, Mines

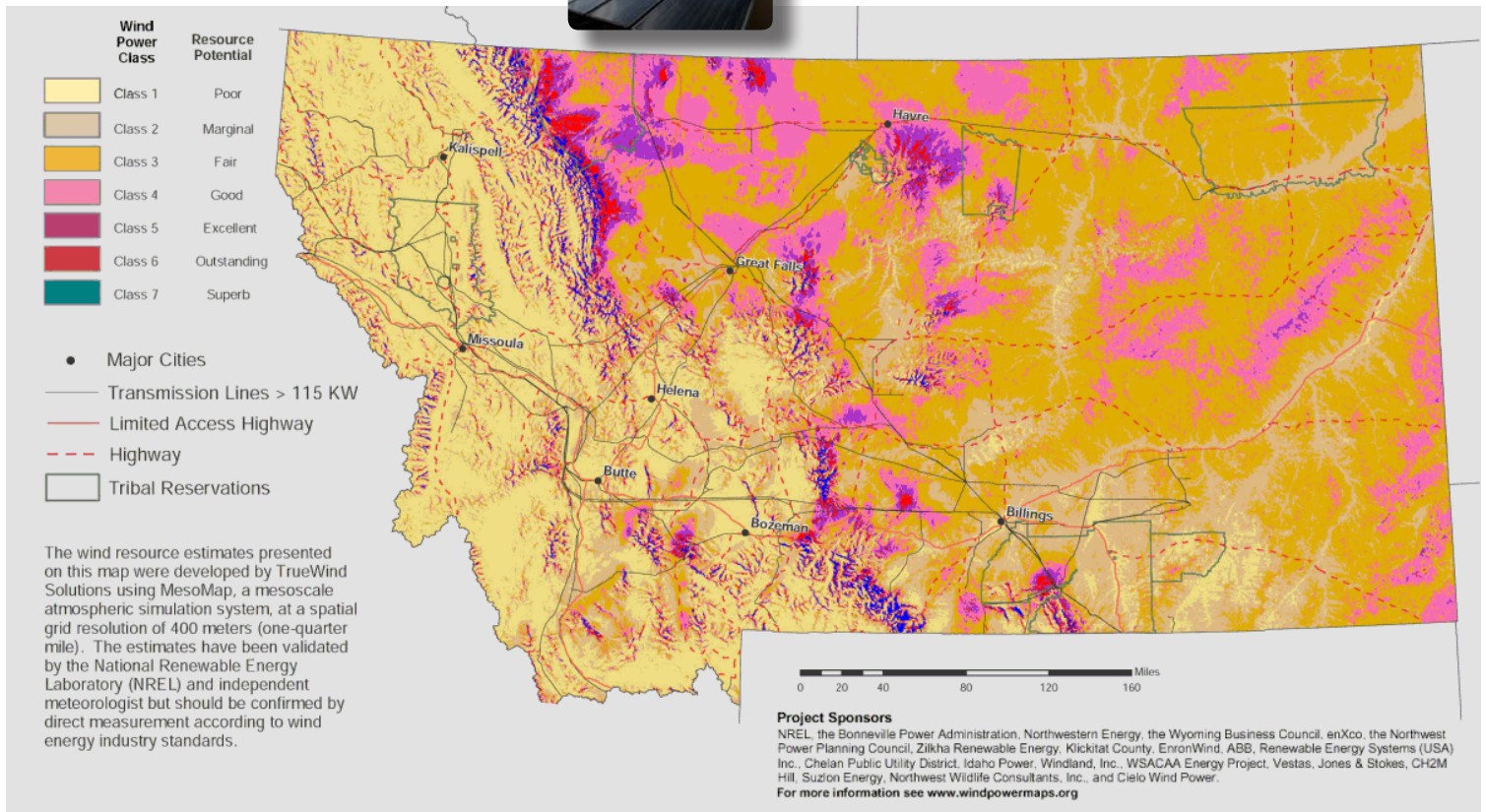
Oil and Gas Wells in Senate District 20

	Montana	Senate District 20	House District 39	House District 40
Coal Bed Methane, Completed	1,042	6	6	0
Coal Bed Methane, Abandoned	36	2	2	0
Coal Bed Methane, Permitted	105	0	0	0
Coal Bed Methane, Under Construction	6	0	0	0
Coal Bed Methane, Water	1	0	0	0
Gas, Completed	6,770	873	873	0
Gas, Abandoned	2,265	227	227	0
Gas, Permitted	284	96	96	0
Gas, Under Construction	210	76	76	0
Gas, Water	49	0	0	0
Oil, Completed	6,835	935	935	0
Oil, Abandoned	4,390	237	237	0
Oil, Gas	2	0	0	0
Oil, Permitted	169	28	28	0
Oil, Under Construction	160	1	1	0
Oil, Water	31	5	5	0
Total	22,355	2,486	2,486	0

Source: Montana Board of Oil and Gas Conservation, October 2008



Wind Power Distribution



Find additional energy related data and maps at <http://nris.mt.gov/>

Pipelines in Senate District 20

	Montana		Senate District 20		House District 39		House District 40	
	Count	Miles	Count	Miles	Count	Miles	Count	Miles
Crude Oil	90	1,970	4	175	4	175	0	0
Natural Gas	360	3,301	16	218	15	216	1	2
Refined Product	47	805	2	60	1	58	1	2
Other	24	402	6	184	6	184	0	0
Total	521	6,477	28	636	26	633	2	4

Source: Pipeline Integrity Management Mapping Application, December 2006

Abandoned Mines and Remediation Sites

	Abandoned Mines	Remediation Sites
Montana	6,857	656
Senate District 20	382	14
House District 39	381	10
House District 40	1	4

Source: Montana Department of Environmental Quality, 2008

Montana House Heating Fuel

Occupied housing units		
Utility gas	215,892	58.0%
Bottled, tank, or LP gas	48,188	13.0%
Electricity	66,054	17.8%
Fuel oil, kerosene, etc.	6,243	1.7%
Coal or coke	701	0.2%
Wood	30,210	8.1%
Solar energy	285	0.1%
Other fuel	4,012	1.1%
No fuel used	369	0.1%

Source: 2007 American Community Survey 1-Year Estimates

Wildlife and Recreation

Montana is blessed with a wealth of wildlife and habitat diversity. These resources provide exceptional opportunities for recreation and contribute substantially to the state's economy and quality of life.

Wildlife Highlights

For more information on other animals, plants, and habitats in your Senate District, visit the Montana Natural Heritage Program at <http://mtnhp.org>.

Resources include:

- Montana Field Guide – an online encyclopedia of Montana's animals and plants;
- Natural Heritage Tracker – powerful mapping tools;
- Land stewardship maps - show public lands, conservation easements, and special designations;
- Access to NatureServe Explorer – with information on species and habitats for all of North America;
- Publications - over 100 survey, species and ecology reports.
- Expert scientists to ensure accuracy of information;
- Quick, friendly responses to data requests and user support.

Loggerhead Shrike

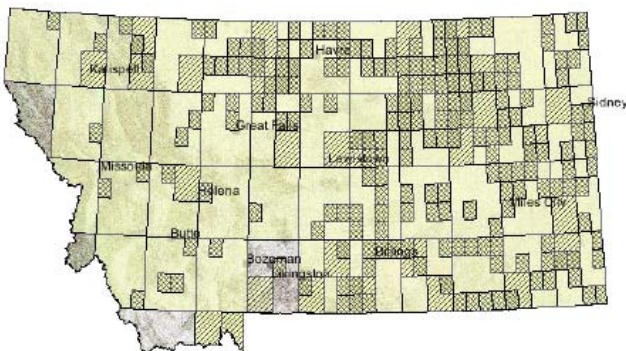
Lanius ludovicianus

The Loggerhead Shrike makes a nest of coarse twigs, with a lining of plant material and animal hair. Shrikes hunt from an open perch, taking insects and occasionally small birds or mammals.

Source: *Montana Natural Heritage Program, Montana Field Guide*



Loggerhead Shrike General Observations



Source: *Natural Heritage Tracker (map)*

Montana Animal and Plant Diversity

Mammals	108
Birds	413
Reptiles	18
Fish	85
Amphibians	13
Vascular Plants	2,400

Montana Big Game Population Estimates

Mule Deer	327,931
White-Tailed Deer	237,496
Antelope	220,500
Elk	138,496
Black Bear	15,500
Bighorn Sheep	5,300
Moose	4,800
Mountain Lion	1,800

Montana Recreation Resources

Public lands acres (multiple use)	26,127,212 acres
Rivers and Streams*	177,000 miles
Cold Water Fishery Streams	15,000 miles
Warm Water Fishery Streams	6,100 miles
Lakes*	845,000 acres
Cold Water Fisheries	400,000 acres
Warm Water Fisheries	350,000 acres

Montana Recreation Sites

Montana State Parks	50
Total acres	34,293 acres
National Parks	7
Total acres	1,172,510 acres
FWP Fishing Access Sites	320
Total acres	24,502 acres
FWP Block Management Acreage	8.5 million
Wildlife Viewing Sites	135
Hiking Trails	2,300
Total miles	15,000 miles
Groomed snowmobile trails	4,023 miles

Montana Wildlife Recreation Facts

Percentage of Montanans (age 16 or older)...	
Who Hunted, 2006	19%
Who Fished, 2006	24%
Who Participated in Wildlife-Watching Activities, 2006	50%
Hunting licenses purchased, 2005	188,299
By Montana Residents	144,642
By Non-residents	43,637
Fishing licenses purchased, 2006	390,214
By Montana Residents	230,426
By Non-residents	159,788
Angler Days Reported by Montana Residents, 2005	2.78 million
Wildlife Viewing by Montana Residents....**	
From Home	389,000
Traveled in the State	510,000
Use of Fishing Access Sites	3.9 million
Personal Watercraft Registered	81,926
Off-Highway Vehicles Registered, 2007	46,707

Montana Economic Impacts of Wildlife Recreation

Spent During Wildlife-Viewing Trips in Montana, 2006**	\$365 million
Spent by Anglers, 2005 (excludes license fees)	\$251.7 million
Hunting-related expenditures	\$302 million

Source: *Montana Natural Heritage Program; Fish, Wildlife and Parks*

* *National Water Quality Inventory: 1998 Report to Congress*

** *2006 National Survey of Fishing, Hunting, and Wildlife and Associated Recreation*

Wildlife and Recreation

Species Diversity in Senate District 20

Senate District 20	
Amphibians	6
Birds	283
Fish	50
Mammals	69
Reptiles	13
Total	421

Source: Montana Natural Heritage Program



Acres of Big Game Winter Range

Big game winter ranges cover a total of 5,382,377 acres or 67.48% of Senate District 20. The table below identifies the number of acres used by individual species even when these areas overlap with other big game animals.

Senate District 20	
Antelope	2,232,856.51
Bighorn Sheep	0.00
Elk	60,092.75
Mountain Goat	0.00
Mule Deer	3,784,603.85
Moose	0.00
White-tailed Deer	1,085,997.42

Source: Montana Fish, Wildlife and Parks

There are a total of 96 Wildlife Viewing Sites in Montana, three of which are located in Senate District 20.

Recreation Area (Acres)

Senate District 20	
Fishing Access Sites	614.43
State Parks	328.42
Wildlife Conservation Easements	0.00
Wildlife Protection Areas	0.00
Wildlife Management Areas	4.58
Total	947.42

Source: Montana Fish, Wildlife, & Parks

Wildlife Highlights

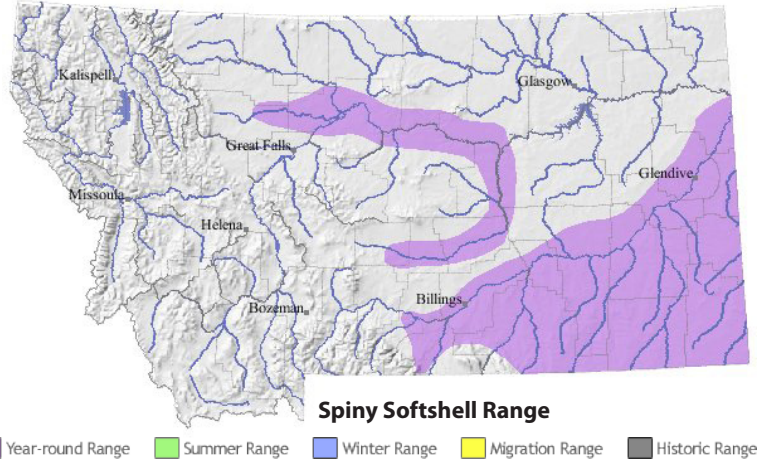
Spiny Softshell

Apalone spinifera

Spiny Softshells are known for foraging in the water, often in shallows with vegetation. Most mature females lay a single clutch of 20 to 40 eggs in the fall.



Source: Montana Natural Heritage Program, Montana Field Guide



Block Management Acreage

There are a total of 7,546,232 acres of Block Management land (excluding Plum Creek*) in the State of Montana. 1,146,251.85 of those acres or 15.19% are located in Senate District 20.

*Plum Creek land in FWP's Regions 1 and 2 are not included in these statistics. Although they are part of the Block Management Program, they are not traditional BMA's and are managed differently.

Source: Montana Fish, Wildlife & Parks



Fishing and Hunting Licenses by County

	Fishing	Hunting	Total
Carter County	10	318	328
Custer County	5,569	9,407	14,976
Dawson County	3,871	5,707	9,578
Fallon County	972	2,457	3,429
McCone County	306	651	957
Powder River County	674	2,381	3,055
Prairie County	217	656	873

Source: Montana Fish, Wildlife & Parks

Senate District 20 Libraries

Public



Ekalaka Public Library

Jennifer Cole, Library Director
Carter County
PO Box 482 Ekalaka, MT 59324
(406) 775-6336
Web Site: <http://sites.google.com/site/ekalakapubliclibrary/>
OCLC, HeritageQuest, Statewide Databases



Fallon County Library

Vera Abrams, Library Director
Fallon County
PO Box 1037 Baker, MT 59313
(406) 778-7160
Web Site: <http://www.midrivers.com/~bakerlib/>
OCLC, HeritageQuest, Statewide Databases



George McCone Memorial County Library

Emmie Loberg, Library Director
McCone County
PO Box 49 Circle, MT 59215
(406) 485-2350
Web Site: <http://www.mconelibrary.com/>
OCLC, HeritageQuest, Statewide Databases



Glendive Public Library

Gail Nagle, Library Director
Dawson County
200 South Kendrick Glendive, MT 59330
(406) 377-3633
Web Site: <http://www.dawsoncountymontana.com/library/>
Catalog: <http://mtscprod.msl.mt.gov/uhtbin/cgisirsi/x/0/0/49>
Montana Shared Catalog, Partners Group, OCLC, MyMontanaLibrary2Go, HeritageQuest, Statewide Databases



Henry A Malley Memorial Library

Diane Stuver, Library Director
Powder River County
PO Box 345 Broadus, MT 59317
(406) 436-2812
OCLC, HeritageQuest, Statewide Databases



Miles City Public Library

Sonja Woods, Library Director
Custer County
One South Tenth Street Miles City, MT 59301
(406) 234-1496
Web Site: <http://www.milescitypubliclibrary.org>
Catalog: <http://mtscprod.msl.mt.gov/uhtbin/cgisirsi/x/0/0/49>
Montana Shared Catalog, Partners Group, OCLC, MyMontanaLibrary2Go, HeritageQuest, Montana Memory Project Participant, Statewide Databases



Prairie County Library

Rolane Christofferson, Library Director
Prairie County
PO Box 275 Terry, MT 59349
(406) 635-5546
OCLC, HeritageQuest, Statewide Databases

Academic



Jane Carey Memorial Library

Todd Knispel, Library Director
Dawson County
PO Box 421 Glendive, MT 59330
(406) 377-9414
Web Site: <http://www.dawson.edu/dcclibrary>
Catalog: <http://www.dawson.edu/dcclibrary>
OMNI System, OCLC, Statewide Databases



Judson H. Flower, Jr. Library

Ann Rutherford, Library Director
Custer County
2715 Dickinson Street Miles City, MT 59301
(406) 874-6105
Web Site: <http://mccolinerference.pbwiki.com/>
Catalog: <http://mtscprod.msl.mt.gov/uhtbin/cgisirsi/x/0/0/49>
Montana Shared Catalog, Partners Group, OCLC, MyMontanaLibrary2Go, Montana Memory Project Participant, Statewide Databases

School

Alzada Elementary

Drusilla Dye, School Librarian
Carter County
PO Box 8 Alzada, MT 59311
(406) 828-4445
Statewide Databases

Baker Middle / High School Library

Diane Van Gorden, School Librarian
Fallon County
PO Box 659 Baker, MT 59313
(406) 778-3329
Web Site: <http://www.baker.k12.mt.us>
OCLC, Statewide Databases

Biddle Elementary

Tedi Jo Williams, Supervising Teacher/Librarian
Powder River County
PO Box 397 Biddle, MT 59314
(406) 427-5030
Statewide Databases

Broadus Public School

Kendra Hartman, School Librarian
Powder River County
PO Box 500 Broadus, MT 59317
(406) 436-2637
Statewide Databases

Carter County High School

Judy Janz, Librarian
Carter County
PO Box 458 Ekalaka, MT 59324
(406) 775-8767
Statewide Databases

Circle Public Schools

Sande Larson, School Librarian
McCone County
PO Box 99 Circle, MT 59215
(406) 485-3600
Statewide Databases

Custer County District

High School Library

Myra Annalora, School Librarian
Custer County
421 North Tenth Street Miles City, MT 59301
(406) 234-4920
Statewide Databases

Dawson County High

School Media Center

Eileen Melby, School Librarian
Dawson County
PO Box 701 Glendive, MT 59330
(406) 377-5265
OCLC, Statewide Databases

Deer Creek Elementary

Etta Herring, Supervising Teacher/Librarian
Dawson County
12 Road 564 Glendive, MT 59330
(406) 687-3364
Statewide Databases

Ekalaka Public Schools Library

Judy Janz, School Library Media Specialist
Carter County
PO Box 458 Ekalaka, MT 59324
(406) 775-8765
Statewide Databases

Garfield Elementary School

BettyLou Berger, School Librarian
Custer County
1604 Main Street Miles City, MT 59301
(406) 234-4310
Statewide Databases

Hawks Home Elementary

Barb Lapke, Supervising Teacher/Librarian
Carter County
HC 49 Box 15 Hammond, MT 59332
(406) 775-6443
Statewide Databases

Highland Park Elementary

Joan Ameline, School Librarian
Custer County
1604 Main St Miles City, MT 59301
(406) 234-3890
Statewide Databases

Jefferson Elementary School

Eloise True, School Librarian
Dawson County
800 Jefferson School Rd Glendive, MT 59330
(406) 377-4155
Statewide Databases

Kinsey Elementary School

Rene Torgerson, School Librarian
Custer County
General Delivery Kinsey, MT 59338
(406) 232-3111
Statewide Databases

Kircher Elementary

Jennifer Beardsley, School Clerk
Custer County
Box 2353 Miles City, MT 59301
(406) 232-6584
Statewide Databases

Lincoln Elementary School

Christy Ivanish, School Librarian
Custer County
1604 Main Street Miles City, MT 59301
(406) 234-1697
Statewide Databases

Lincoln School

Linda Wade, Library Aide
Fallon County
PO Box 1077 Baker, MT 59313
(406) 778-2022
Statewide Databases

Lindsay Elementary

Shirley Sadowski, Teacher
Dawson County
PO Box 184 Lindsay, MT 59339
(406) 584-7585
Statewide Databases

Longfellow Library

Linda Wade, Library Aide
Fallon County
P O Box 1077 Baker, MT 59313
(406) 778-2022
Statewide Databases

Pine Hills School Library

Rebecca Schmidt, School Librarian
Custer County
4 N Haynes Ave Miles City, MT 59301
(406) 233-2216
Catalog: <http://mtscprod.msl.mt.gov/uhtbin/cgisirsi/x/0/0/49>
Montana Shared Catalog, OCLC, Statewide Databases

Plevna Public Schools

Tom McPhee, School Librarian
Fallon County
PO Box 158 Plevna, MT 59344
(406) 772-5666
Statewide Databases

Powder River County District High School

Meri Mainwaring, School Librarian
Powder River County
PO Box 500 Broadus, MT 59317
(406) 436-2658
Statewide Databases

S H School

Ron Hunt, Supervising Teacher/Librarian
Custer County
HC 40 Box 6591 Miles City, MT 59301
(406) 421-5439
Statewide Databases

South Stacey Elementary Library

Jenni Felgenhauer, Supervising Teacher/Librarian
Powder River County
124 Stacey Rd. Volborg, MT 59351
(406) 784-2256
Statewide Databases

Spring Creek Elementary Library

Lydianne Jurica, Teacher
Custer County
HC 30 Box 8300 Powderville, MT 59345
(406) 554-3512
Statewide Databases

Terry Public Schools Library

Jeannette Anderson, School Librarian
Prairie County
PO Box 187 Terry, MT 59349
(406) 635-5533
Statewide Databases

Trail Creek Elementary Library

Joyce Utroske, Supervising Teacher/Librarian
Custer County
HC 80 Box 26 Ismay, MT 59336
(406) 421-5503
Statewide Databases

Twin Buttes Elementary Library

Melinda Hogue, Supervising Teacher/Librarian
Custer County
HC 32 Box 4916 Miles City, MT 59301
(406) 354-7271
Statewide Databases

Washington Middle School Library

Sue Stanton, School Librarian
Custer County
1604 Main St Miles City, MT 59301
(406) 234-2084
Statewide Databases

Special

VA MT Healthcare System Medical Library

Gail Wilkerson, Library Director
Custer County
210 South Winchester Miles City, MT 59301
(406) 874-5615
Statewide Databases

State of Montana Index

	Montana	United States	Rank in US
Geography			
Population per square mile 2000	6.2	79.6	27
Households 2000 (complete count)	358,667	105,480,101	22
Persons per household 2000 (complete count)	2.5	2.6	32
Resident Population			
Estimate (July 1) 2006	944,632	299,398,484	23
Estimate, percent change - April 1, 2000 to July 1, 2006	4.7	6.4	34
Estimate, net change - April 1, 2000 to July 1, 2006	42,437	17,973,882	27
(April 1) 2000 (complete count)	902,195	281,421,906	23
Under 5 years of age (July 1) 2006	57,916	20,417,636	24
Under 5 years of age, percent (July 1) 2006	6.1	6.80	30
Under 18 years of age (July 1) 2006	217,848	73,735,562	23
Under 18 years of age, percent (July 1) 2006	23.1	24.6	23
65 years and over (July 1) 2006	14	37,260,352	22
65 years and over, percent (July 1) 2006	130,592	12	12
Total females, percent (July 1) 2006	50.0	50.7	6
White alone (July 1) 2006	858,140	239,746,254	25
Black alone (July 1) 2006	4,094	38,342,549	16
American Indian and Alaska Native alone (July 1) 2006	60,725	2,902,851	30
Asian alone (July 1) 2006	5,699	13,159,343	33
Native Hawaiian and Other Pacific Islander alone (July 1) 2006	527	528,818	36
Population 5 years and over, percent speaking language other than English at	5.2	17.9	48
Civilian noninstitutionalized population, 5 years and over, with a disability 2000	145,732	49,746,248	18
Vital Statistics			
Births 2004	11,519	4,112,052	24
Deaths 2004	8,094	2,397,615	17
Infant deaths under one year 2004	52	27,936	20
Population 5 years and over by residence in 1995 - percent in same house 2000 (sample)	53.6	54.1	13
Percent foreign born population 2000 (sample)	1.8	11.1	45
Education			
Educational attainment - persons 25 years and over - percent high school graduate or higher 2000	87.2	80.4	46
Educational attainment - persons 25 years and over - percent bachelor's degree or higher 2000	24.4	24.4	45
Income/Poverty			
Per capita income in 1999	17,151	21,587	39
Median household income 2004	35,574	44,334	45
People of all ages in poverty - percent 2004	14	13	8
Personal Income (NAICS) 2005	27,122	10,220,942	24
Per capita personal income (NAICS) 2005	29,015	34,471	41
Federal			
Federal Government expenditure - total FY 2004	7,493,567	2,143,781,727	19
Federal Government expenditure per capita FY 2004	8,085	7,300	10
Housing			
Housing unit estimates as of July 1, 2006	432,023	126,316,181	22
Housing unit estimates - net change, April 1, 2000 (base) to July 1, 2006	19,390	10,411,707	24
Housing unit estimates - percent change, April 1, 2000 (base) to July 1, 2006	4.70	9.00	26
Owner-occupied housing units - percent of total occupied housing units 2000 (complete count)	69.1	66.2	4
Median value of specified owner-occupied housing units 2000 (sample)	99,500	119,600	41
Housing units by units in structure - multiple units 2000 (sample)	15.7	26.40	44
New private housing units authorized by building permits - total 2006 (20,000-place universe)	4,542	1,838,903	18
Valuation of new private housing units authorized by building permits 2006	723,109	291,314,492	23
Employment/Business			
Civilian labor force 2006	493,842	151,428,000	23
Civilian labor force unemployment 2006	15,680	7,001,000	29
Civilian labor force unemployment rate 2006	3.2	4.6	38
Employment in all industries (NAICS) 2005	613,425	174,249,600	23
Employment in all industries (NAICS), net change 2000 (SIC)- 2005	54,370	7,490,800	20
Employment in government and government enterprises (NAICS) 2005	92,756	23,837,000	24
Earnings in all industries (NAICS, no code) 2005	19,787,993	7,983,652,000	24
Earnings in all industries (NAICS, no code), average earnings per job 2005	32,258	45,817	32
Average travel time to work for workers 16 years and over not working at home 2000	17.7	25.5	19
Private nonfarm establishments 2005	35,736	7,499,702	26
Private nonfarm employment for pay period including March 12, 2005	326,887	116,317,003	23
Private nonfarm employment for pay period including March 12, 2005, percent change 2000-2005	10.4	2.0	35
Nonemployer: total (NAICS 00) establishments, 2005	80,851	20,392,068	23
Accommodation and Food Services: total (NAICS 72) - sales of establishments with payroll 2002	1,537,986	449,498,718	31
Total number of firms 2002	100,402	22,974,655	24
Manufacturing: total (NAICS 31-33) - value of shipments 2002	4,987,577	3,916,136,712	23
Wholesale trade: total (NAICS 42) - sales of establishments with payroll 2002	7,223,420	4,634,755,112	28
Retail trade: total (NAICS 44-45) - sales of establishments with payroll 2002	10,122,625	3,056,421,997	23
Retail trade: total (NAICS 44-45) - sales of establishments with payroll per capita 2002	11,116	10,615	42
Land in farms (NAICS) 2002(acres)(not adjusted)	59,612,403	938,279,056	32

Source: U.S. Census Bureau

Carter County Index

	County	Montana	Rank in MT
Geography			
Population per square mile 2000	0.4	6.2	54
Households 2000 (complete count)	543	358,667	50
Persons per household 2000 (complete count)	2.5	2.5	18
Resident Population			
Estimate (July 1) 2006	1,321	944,632	50
Estimate, percent change - April 1, 2000 to July 1, 2006	-2.9	4.7	31
Estimate, net change - April 1, 2000 to July 1, 2006	-39	42,437	27
(April 1) 2000 (complete count)	1,360	902,195	50
Under 5 years of age (July 1) 2006	35	57,916	53
Under 5 years of age, percent (July 1) 2006	2.6	6.1	56
Under 18 years of age (July 1) 2006	226	217,848	52
Under 18 years of age, percent (July 1) 2006	17.1	23.1	55
65 years and over (July 1) 2006	261	130,592	50
65 years and over, percent (July 1) 2006	19.8	13.8	11
Total females, percent (July 1) 2006	50.3	50.0	17
White alone (July 1) 2006	1,309	858,140	50
Black alone (July 1) 2006	1	4,094	46
American Indian and Alaska Native alone (July 1) 2006	5	60,725	53
Asian alone (July 1) 2006	3	5,699	48
Native Hawaiian and Other Pacific Islander alone (July 1) 2006	0	527	43
Population 5 years and over, percent speaking language other than English at	3	5	51
Civilian noninstitutionalized population, 5 years and over, with a disability 2000	280	145,732	50
Vital Statistics			
Births 2004	7	11,519	53
Deaths 2004	13	8,094	51
Infant deaths under one year 2004	0	52	26
Population 5 years and over by residence in 1995 - percent in same house 2000 (sample)	73.8	53.6	2.0
Percent foreign born population 2000 (sample)	1.0	1.8	44
Education			
Educational attainment - persons 25 years and over - percent high school graduate or higher 2000	83.3	87.2	36
Educational attainment - persons 25 years and over - percent bachelor's degree or higher 2000	13.6	24.4	53
Income/Poverty			
Per capita income in 1999	13,280	17,151	51
Median household income 2004	28,411	35,574	50
People of all ages in poverty - percent 2004	11	14	45
Personal Income (NAICS) 2005	33	27,122	51
Per capita personal income (NAICS) 2005	25,209	29,015	33
Federal			
Federal Government expenditure - total FY 2004	27,970	7,493,567	42
Federal Government expenditure per capita FY 2004	21,125	8,085	2
Housing			
Housing unit estimates as of July 1, 2006	806	432,023	51
Housing unit estimates - net change, April 1, 2000 (base) to July 1, 2006	-5	19,390	38
Housing unit estimates - percent change, April 1, 2000 (base) to July 1, 2006	-0.6	4.7	46
Owner-occupied housing units - percent of total occupied housing units 2000 (complete count)	74.8	69.1	17
Median value of specified owner-occupied housing units 2000 (sample)	34,600	99,500	56
Housing units by units in structure - multiple units 2000 (sample)	3.0	15.70	52
New private housing units authorized by building permits - total 2006 (20,000-place universe)	0	4,542	38
Valuation of new private housing units authorized by building permits 2006	0	723,109	38
Employment/Business			
Civilian labor force 2006	657	493,842	50
Civilian labor force unemployment 2006	21	15,680	50
Civilian labor force unemployment rate 2006	3.2	3.2	27
Employment in all industries (NAICS) 2005	898	613,425	50
Employment in all industries (NAICS), net change 2000 (SIC)- 2005	0	54,370	51
Employment in government and government enterprises (NAICS) 2005	112	92,756	53
Earnings in all industries (NAICS, no code) 2005	17,648	19,787,993	51
Earnings in all industries (NAICS, no code), average earnings per job 2005	19,653	32,258	51
Average travel time to work for workers 16 years and over not working at home 2000	22.5	17.7	9
Private nonfarm establishments 2005	32	35,736	52
Private nonfarm employment for pay period including March 12, 2005	126	326,887	53
Private nonfarm employment for pay period including March 12, 2005, percent change 2000-2005	0.0	10.40	38
Nonemployer: total (NAICS 00) establishments, 2005	96	80,851	51
Accommodation and Food Services: total (NAICS 72) - sales of establishments with payroll 2002	0	1,537,986	54
Total number of firms 2002	113	100,402	51
Manufacturing: total (NAICS 31-33) - value of shipments 2002	0	4,987,577	14
Wholesale trade: total (NAICS 42) - sales of establishments with payroll 2002	0	7,223,420	39
Retail trade: total (NAICS 44-45) - sales of establishments with payroll 2002	4,470	10,122,625	50
Retail trade: total (NAICS 44-45) - sales of establishments with payroll per capita 2002	3,289	11,116	49
Land in farms (NAICS) 2002(acres)(not adjusted)	1,666,922	59,612,403	11

Source: U.S. Census Bureau

Custer County Index

	County	Montana	Rank in MT
Geography			
Population per square mile 2000	3.1	6.2	25
Households 2000 (complete count)	4,768	358,667	14
Persons per household 2000 (complete count)	2.4	2.5	42
Resident Population			
Estimate (July 1) 2006	11,151	944,632	17
Estimate, percent change - April 1, 2000 to July 1, 2006	-4.7	4.7	37
Estimate, net change - April 1, 2000 to July 1, 2006	-545	42,437	52
(April 1) 2000 (complete count)	11,696	902,195	16
Under 5 years of age (July 1) 2006	642	57,916	17
Under 5 years of age, percent (July 1) 2006	5.8	6.1	18
Under 18 years of age (July 1) 2006	2,580	217,848	17
Under 18 years of age, percent (July 1) 2006	23.1	23.1	15
65 years and over (July 1) 2006	1,955	130,592	15
65 years and over, percent (July 1) 2006	17.5	13.8	29
Total females, percent (July 1) 2006	50.6	50.0	10
White alone (July 1) 2006	10,814	858,140	15
Black alone (July 1) 2006	14	4,094	26
American Indian and Alaska Native alone (July 1) 2006	194	60,725	27
Asian alone (July 1) 2006	32	5,699	21
Native Hawaiian and Other Pacific Islander alone (July 1) 2006	6	527	13
Population 5 years and over, percent speaking language other than English at	5	5	24
Civilian noninstitutionalized population, 5 years and over, with a disability 2000	2,063	145,732	17
Vital Statistics			
Births 2004	125	11,519	17
Deaths 2004	134	8,094	13
Infant deaths under one year 2004	1	52	15
Population 5 years and over by residence in 1995 - percent in same house 2000 (sample)	57.7	53.6	35.0
Percent foreign born population 2000 (sample)	1.4	1.8	30
Education			
Educational attainment - persons 25 years and over - percent high school graduate or higher 2000	84.9	87.2	26
Educational attainment - persons 25 years and over - percent bachelor's degree or higher 2000	18.8	24.4	23
Income/Poverty			
Per capita income in 1999	15,876	17,151	24
Median household income 2004	34,035	35,574	22
People of all ages in poverty - percent 2004	14	14	24
Personal Income (NAICS) 2005	295	27,122	16
Per capita personal income (NAICS) 2005	26,240	29,015	28
Federal			
Federal Government expenditure - total FY 2004	86,854	7,493,567	18
Federal Government expenditure per capita FY 2004	7,583	8,085	34
Housing			
Housing unit estimates as of July 1, 2006	5,334	432,023	15
Housing unit estimates - net change, April 1, 2000 (base) to July 1, 2006	-26	19,390	55
Housing unit estimates - percent change, April 1, 2000 (base) to July 1, 2006	-0.5	4.7	44
Owner-occupied housing units - percent of total occupied housing units 2000 (complete count)	70.2	69.1	42
Median value of specified owner-occupied housing units 2000 (sample)	63,100	99,500	31
Housing units by units in structure - multiple units 2000 (sample)	17.6	15.70	9
New private housing units authorized by building permits - total 2006 (20,000-place universe)	8	4,542	21
Valuation of new private housing units authorized by building permits 2006	1,099	723,109	20
Employment/Business			
Civilian labor force 2006	5,551	493,842	16
Civilian labor force unemployment 2006	171	15,680	21
Civilian labor force unemployment rate 2006	3.1	3.2	30
Employment in all industries (NAICS) 2005	7,229	613,425	14
Employment in all industries (NAICS), net change 2000 (SIC)- 2005	212	54,370	27
Employment in government and government enterprises (NAICS) 2005	1,100	92,756	18
Earnings in all industries (NAICS, no code) 2005	193,504	19,787,993	18
Earnings in all industries (NAICS, no code), average earnings per job 2005	26,768	32,258	25
Average travel time to work for workers 16 years and over not working at home 2000	11.9	17.7	54
Private nonfarm establishments 2005	403	35,736	15
Private nonfarm employment for pay period including March 12, 2005	3,725	326,887	13
Private nonfarm employment for pay period including March 12, 2005, percent change 2000-2005	-4.6	10.40	50
Nonemployer: total (NAICS 00) establishments, 2005	788	80,851	19
Accommodation and Food Services: total (NAICS 72) - sales of establishments with payroll 2002	18,040	1,537,986	14
Total number of firms 2002	1,152	100,402	17
Manufacturing: total (NAICS 31-33) - value of shipments 2002	0	4,987,577	16
Wholesale trade: total (NAICS 42) - sales of establishments with payroll 2002	81,951	7,223,420	11
Retail trade: total (NAICS 44-45) - sales of establishments with payroll 2002	142,594	10,122,625	11
Retail trade: total (NAICS 44-45) - sales of establishments with payroll per capita 2002	12,466	11,116	7
Land in farms (NAICS) 2002(acres)(not adjusted)	1,904,133	59,612,403	8

Source: U.S. Census Bureau

Dawson County Index

	County	Montana	Rank in MT
Geography			
Population per square mile 2000	3.8	6.2	21
Households 2000 (complete count)	3,625	358,667	23
Persons per household 2000 (complete count)	2.4	2.5	39
Resident Population			
Estimate (July 1) 2006	8,624	944,632	26
Estimate, percent change - April 1, 2000 to July 1, 2006	-4.8	4.7	38
Estimate, net change - April 1, 2000 to July 1, 2006	-435	42,437	48
(April 1) 2000 (complete count)	9,059	902,195	25
Under 5 years of age (July 1) 2006	450	57,916	25
Under 5 years of age, percent (July 1) 2006	5.2	6.1	27
Under 18 years of age (July 1) 2006	1,763	217,848	27
Under 18 years of age, percent (July 1) 2006	20.4	23.1	42
65 years and over (July 1) 2006	1,532	130,592	18
65 years and over, percent (July 1) 2006	17.8	13.8	26
Total females, percent (July 1) 2006	49.8	50.0	29
White alone (July 1) 2006	8,387	858,140	22
Black alone (July 1) 2006	25	4,094	16
American Indian and Alaska Native alone (July 1) 2006	121	60,725	31
Asian alone (July 1) 2006	17	5,699	33
Native Hawaiian and Other Pacific Islander alone (July 1) 2006	1	527	29
Population 5 years and over, percent speaking language other than English at	4	5	27
Civilian noninstitutionalized population, 5 years and over, with a disability 2000	1,381	145,732	26
Vital Statistics			
Births 2004	88	11,519	25
Deaths 2004	108	8,094	18
Infant deaths under one year 2004	1	52	16
Population 5 years and over by residence in 1995 - percent in same house 2000 (sample)	62.8	53.6	25.0
Percent foreign born population 2000 (sample)	1.1	1.8	40
Education			
Educational attainment - persons 25 years and over - percent high school graduate or higher 2000	82.7	87.2	39
Educational attainment - persons 25 years and over - percent bachelor's degree or higher 2000	15.1	24.4	45
Income/Poverty			
Per capita income in 1999	15,368	17,151	29
Median household income 2004	35,740	35,574	15
People of all ages in poverty - percent 2004	12	14	37
Personal Income (NAICS) 2005	213	27,122	27
Per capita personal income (NAICS) 2005	24,714	29,015	36
Federal			
Federal Government expenditure - total FY 2004	58,401	7,493,567	29
Federal Government expenditure per capita FY 2004	6,763	8,085	41
Housing			
Housing unit estimates as of July 1, 2006	4,144	432,023	25
Housing unit estimates - net change, April 1, 2000 (base) to July 1, 2006	-24	19,390	54
Housing unit estimates - percent change, April 1, 2000 (base) to July 1, 2006	-0.6	4.7	47
Owner-occupied housing units - percent of total occupied housing units 2000 (complete count)	74.0	69.1	22
Median value of specified owner-occupied housing units 2000 (sample)	62,700	99,500	32
Housing units by units in structure - multiple units 2000 (sample)	10.1	15.70	24
New private housing units authorized by building permits - total 2006 (20,000-place universe)	3	4,542	25
Valuation of new private housing units authorized by building permits 2006	418	723,109	23
Employment/Business			
Civilian labor force 2006	4,119	493,842	24
Civilian labor force unemployment 2006	113	15,680	28
Civilian labor force unemployment rate 2006	2.7	3.2	45
Employment in all industries (NAICS) 2005	5,475	613,425	23
Employment in all industries (NAICS), net change 2000 (SIC)- 2005	-185	54,370	56
Employment in government and government enterprises (NAICS) 2005	807	92,756	23
Earnings in all industries (NAICS, no code) 2005	153,892	19,787,993	21
Earnings in all industries (NAICS, no code), average earnings per job 2005	28,108	32,258	19
Average travel time to work for workers 16 years and over not working at home 2000	13.1	17.7	49
Private nonfarm establishments 2005	305	35,736	20
Private nonfarm employment for pay period including March 12, 2005	2,616	326,887	17
Private nonfarm employment for pay period including March 12, 2005, percent change 2000-2005	5.6	10.40	21
Nonemployer: total (NAICS 00) establishments, 2005	624	80,851	23
Accommodation and Food Services: total (NAICS 72) - sales of establishments with payroll 2002	9,103	1,537,986	22
Total number of firms 2002	833	100,402	23
Manufacturing: total (NAICS 31-33) - value of shipments 2002	0	4,987,577	18
Wholesale trade: total (NAICS 42) - sales of establishments with payroll 2002	61,621	7,223,420	14
Retail trade: total (NAICS 44-45) - sales of establishments with payroll 2002	74,732	10,122,625	19
Retail trade: total (NAICS 44-45) - sales of establishments with payroll per capita 2002	8,553	11,116	16
Land in farms (NAICS) 2002(acres)(not adjusted)	1,410,885	59,612,403	16

Source: U.S. Census Bureau

Fallon County Index

	County	Montana	Rank in MT
Geography			
Population per square mile 2000	1.8	6.2	36
Households 2000 (complete count)	1,140	358,667	42
Persons per household 2000 (complete count)	2.5	2.5	22
Resident Population			
Estimate (July 1) 2006	2,717	944,632	42
Estimate, percent change - April 1, 2000 to July 1, 2006	-4.2	4.7	36
Estimate, net change - April 1, 2000 to July 1, 2006	-120	42,437	29
(April 1) 2000 (complete count)	2,837	902,195	41
Under 5 years of age (July 1) 2006	146	57,916	40
Under 5 years of age, percent (July 1) 2006	5.4	6.1	23
Under 18 years of age (July 1) 2006	560	217,848	41
Under 18 years of age, percent (July 1) 2006	20.6	23.1	39
65 years and over (July 1) 2006	529	130,592	41
65 years and over, percent (July 1) 2006	19.5	13.8	12
Total females, percent (July 1) 2006	49.7	50.0	33
White alone (July 1) 2006	2,666	858,140	42
Black alone (July 1) 2006	3	4,094	43
American Indian and Alaska Native alone (July 1) 2006	21	60,725	45
Asian alone (July 1) 2006	9	5,699	36
Native Hawaiian and Other Pacific Islander alone (July 1) 2006	1	527	31
Population 5 years and over, percent speaking language other than English at	3	5	48
Civilian noninstitutionalized population, 5 years and over, with a disability 2000	402	145,732	42
Vital Statistics			
Births 2004	31	11,519	40
Deaths 2004	24	8,094	43
Infant deaths under one year 2004	0	52	28
Population 5 years and over by residence in 1995 - percent in same house 2000 (sample)	67.0	53.6	12.0
Percent foreign born population 2000 (sample)	1.0	1.8	45
Education			
Educational attainment - persons 25 years and over - percent high school graduate or higher 2000	85.7	87.2	22
Educational attainment - persons 25 years and over - percent bachelor's degree or higher 2000	14.4	24.4	49
Income/Poverty			
Per capita income in 1999	16,014	17,151	21
Median household income 2004	37,822	35,574	9
People of all ages in poverty - percent 2004	9	14	55
Personal Income (NAICS) 2005	82	27,122	41
Per capita personal income (NAICS) 2005	30,425	29,015	9
Federal			
Federal Government expenditure - total FY 2004	20,304	7,493,567	46
Federal Government expenditure per capita FY 2004	7,319	8,085	37
Housing			
Housing unit estimates as of July 1, 2006	1,413	432,023	42
Housing unit estimates - net change, April 1, 2000 (base) to July 1, 2006	3	19,390	26
Housing unit estimates - percent change, April 1, 2000 (base) to July 1, 2006	0.2	4.7	23
Owner-occupied housing units - percent of total occupied housing units 2000 (complete count)	77.4	69.1	7
Median value of specified owner-occupied housing units 2000 (sample)	48,000	99,500	46
Housing units by units in structure - multiple units 2000 (sample)	7.2	15.70	33
New private housing units authorized by building permits - total 2006 (20,000-place universe)	0	4,542	39
Valuation of new private housing units authorized by building permits 2006	0	723,109	39
Employment/Business			
Civilian labor force 2006	1,731	493,842	40
Civilian labor force unemployment 2006	32	15,680	44
Civilian labor force unemployment rate 2006	1.8	3.2	55
Employment in all industries (NAICS) 2005	2,124	613,425	39
Employment in all industries (NAICS), net change 2000 (SIC)- 2005	198	54,370	28
Employment in government and government enterprises (NAICS) 2005	273	92,756	42
Earnings in all industries (NAICS, no code) 2005	72,252	19,787,993	36
Earnings in all industries (NAICS, no code), average earnings per job 2005	34,017	32,258	8
Average travel time to work for workers 16 years and over not working at home 2000	14.9	17.7	39
Private nonfarm establishments 2005	130	35,736	40
Private nonfarm employment for pay period including March 12, 2005	832	326,887	38
Private nonfarm employment for pay period including March 12, 2005, percent change 2000-2005	24.6	10.40	5
Nonemployer: total (NAICS 00) establishments, 2005	280	80,851	42
Accommodation and Food Services: total (NAICS 72) - sales of establishments with payroll 2002	2,580	1,537,986	39
Total number of firms 2002	355	100,402	42
Manufacturing: total (NAICS 31-33) - value of shipments 2002	0	4,987,577	20
Wholesale trade: total (NAICS 42) - sales of establishments with payroll 2002	17,745	7,223,420	25
Retail trade: total (NAICS 44-45) - sales of establishments with payroll 2002	19,657	10,122,625	41
Retail trade: total (NAICS 44-45) - sales of establishments with payroll per capita 2002	7,206	11,116	19
Land in farms (NAICS) 2002(acres)(not adjusted)	932,211	59,612,403	26

Source: U.S. Census Bureau

McCone County Index

	County	Montana	Rank in MT
Geography			
Population per square mile 2000	0.7	6.2	51
Households 2000 (complete count)	810	358,667	47
Persons per household 2000 (complete count)	2.4	2.5	26
Resident Population			
Estimate (July 1) 2006	1,760	944,632	27
Estimate, percent change - April 1, 2000 to July 1, 2006	-11.0	4.7	51
Estimate, net change - April 1, 2000 to July 1, 2006	-217	42,437	38
(April 1) 2000 (complete count)	1,977	902,195	47
Under 5 years of age (July 1) 2006	58	57,916	51
Under 5 years of age, percent (July 1) 2006	3.3	6.1	53
Under 18 years of age (July 1) 2006	373	217,848	46
Under 18 years of age, percent (July 1) 2006	21.2	23.1	31
65 years and over (July 1) 2006	352	130,592	48
65 years and over, percent (July 1) 2006	20.0	13.8	10
Total females, percent (July 1) 2006	50.2	50.0	22
White alone (July 1) 2006	1,699	858,140	49
Black alone (July 1) 2006	6	4,094	35
American Indian and Alaska Native alone (July 1) 2006	28	60,725	44
Asian alone (July 1) 2006	5	5,699	47
Native Hawaiian and Other Pacific Islander alone (July 1) 2006	0	527	48
Population 5 years and over, percent speaking language other than English at	2	5	55
Civilian noninstitutionalized population, 5 years and over, with a disability 2000	299	145,732	48
Vital Statistics			
Births 2004	11	11,519	50
Deaths 2004	11	8,094	53
Infant deaths under one year 2004	0	52	35
Population 5 years and over by residence in 1995 - percent in same house 2000 (sample)	72.6	53.6	3.0
Percent foreign born population 2000 (sample)	0.7	1.8	53
Education			
Educational attainment - persons 25 years and over - percent high school graduate or higher 2000	86.1	87.2	21
Educational attainment - persons 25 years and over - percent bachelor's degree or higher 2000	16.4	24.4	38
Income/Poverty			
Per capita income in 1999	15,162	17,151	33
Median household income 2004	29,746	35,574	44
People of all ages in poverty - percent 2004	10	14	50
Personal Income (NAICS) 2005	45	27,122	48
Per capita personal income (NAICS) 2005	25,224	29,015	32
Federal			
Federal Government expenditure - total FY 2004	19,820	7,493,567	48
Federal Government expenditure per capita FY 2004	11,166	8,085	13
Housing			
Housing unit estimates as of July 1, 2006	1,079	432,023	47
Housing unit estimates - net change, April 1, 2000 (base) to July 1, 2006	-8	19,390	45
Housing unit estimates - percent change, April 1, 2000 (base) to July 1, 2006	-0.7	4.7	53
Owner-occupied housing units - percent of total occupied housing units 2000 (complete count)	78.0	69.1	5
Median value of specified owner-occupied housing units 2000 (sample)	42,600	99,500	51
Housing units by units in structure - multiple units 2000 (sample)	5.1	15.70	44
New private housing units authorized by building permits - total 2006 (20,000-place universe)	0	4,542	46
Valuation of new private housing units authorized by building permits 2006	0	723,109	46
Employment/Business			
Civilian labor force 2006	996	493,842	44
Civilian labor force unemployment 2006	24	15,680	48
Civilian labor force unemployment rate 2006	2.4	3.2	53
Employment in all industries (NAICS) 2005	1,286	613,425	44
Employment in all industries (NAICS), net change 2000 (SIC)- 2005	79	54,370	35
Employment in government and government enterprises (NAICS) 2005	182	92,756	47
Earnings in all industries (NAICS, no code) 2005	27,201	19,787,993	46
Earnings in all industries (NAICS, no code), average earnings per job 2005	21,152	32,258	45
Average travel time to work for workers 16 years and over not working at home 2000	15.1	17.7	38
Private nonfarm establishments 2005	61	35,736	48
Private nonfarm employment for pay period including March 12, 2005	341	326,887	45
Private nonfarm employment for pay period including March 12, 2005, percent change 2000-2005	-4.2	10.40	49
Nonemployer: total (NAICS 00) establishments, 2005	135	80,851	48
Accommodation and Food Services: total (NAICS 72) - sales of establishments with payroll 2002	522	1,537,986	50
Total number of firms 2002	181	100,402	48
Manufacturing: total (NAICS 31-33) - value of shipments 2002	0	4,987,577	31
Wholesale trade: total (NAICS 42) - sales of establishments with payroll 2002	0	7,223,420	45
Retail trade: total (NAICS 44-45) - sales of establishments with payroll 2002	11,488	10,122,625	46
Retail trade: total (NAICS 44-45) - sales of establishments with payroll per capita 2002	6,237	11,116	31
Land in farms (NAICS) 2002(acres)(not adjusted)	1,346,271	59,612,403	18

Source: U.S. Census Bureau

Powder River County Index

	County	Montana	Rank in MT
Geography			
Population per square mile 2000	0.6	6.2	53
Households 2000 (complete count)	737	358,667	49
Persons per household 2000 (complete count)	2.5	2.5	14
Resident Population			
Estimate (July 1) 2006	1,756	944,632	49
Estimate, percent change - April 1, 2000 to July 1, 2006	-5.5	4.7	42
Estimate, net change - April 1, 2000 to July 1, 2006	-102	42,437	28
(April 1) 2000 (complete count)	1,858	902,195	49
Under 5 years of age (July 1) 2006	59	57,916	50
Under 5 years of age, percent (July 1) 2006	3.4	6.1	51
Under 18 years of age (July 1) 2006	361	217,848	47
Under 18 years of age, percent (July 1) 2006	20.6	23.1	40
65 years and over (July 1) 2006	338	130,592	49
65 years and over, percent (July 1) 2006	19.2	13.8	13
Total females, percent (July 1) 2006	50.4	50.0	13
White alone (July 1) 2006	1,704	858,140	48
Black alone (July 1) 2006	0	4,094	56
American Indian and Alaska Native alone (July 1) 2006	35	60,725	41
Asian alone (July 1) 2006	1	5,699	55
Native Hawaiian and Other Pacific Islander alone (July 1) 2006	0	527	51
Population 5 years and over, percent speaking language other than English at	1	5	56
Civilian noninstitutionalized population, 5 years and over, with a disability 2000	308	145,732	47
Vital Statistics			
Births 2004	11	11,519	51
Deaths 2004	16	8,094	48
Infant deaths under one year 2004	0	52	42
Population 5 years and over by residence in 1995 - percent in same house 2000 (sample)	66.9	53.6	13.0
Percent foreign born population 2000 (sample)	0.6	1.8	55
Education			
Educational attainment - persons 25 years and over - percent high school graduate or higher 2000	83.4	87.2	34
Educational attainment - persons 25 years and over - percent bachelor's degree or higher 2000	16.0	24.4	40
Income/Poverty			
Per capita income in 1999	15,351	17,151	30
Median household income 2004	30,732	35,574	36
People of all ages in poverty - percent 2004	10	14	52
Personal Income (NAICS) 2005	39	27,122	49
Per capita personal income (NAICS) 2005	22,826	29,015	43
Federal			
Federal Government expenditure - total FY 2004	14,659	7,493,567	51
Federal Government expenditure per capita FY 2004	8,212	8,085	27
Housing			
Housing unit estimates as of July 1, 2006	1,006	432,023	49
Housing unit estimates - net change, April 1, 2000 (base) to July 1, 2006	-1	19,390	30
Housing unit estimates - percent change, April 1, 2000 (base) to July 1, 2006	-0.1	4.7	31
Owner-occupied housing units - percent of total occupied housing units 2000 (complete count)	73.8	69.1	23
Median value of specified owner-occupied housing units 2000 (sample)	59,800	99,500	38
Housing units by units in structure - multiple units 2000 (sample)	3.9	15.70	47
New private housing units authorized by building permits - total 2006 (20,000-place universe)	0	4,542	50
Valuation of new private housing units authorized by building permits 2006	0	723,109	50
Employment/Business			
Civilian labor force 2006	889	493,842	46
Civilian labor force unemployment 2006	26	15,680	46
Civilian labor force unemployment rate 2006	2.9	3.2	39
Employment in all industries (NAICS) 2005	1,189	613,425	47
Employment in all industries (NAICS), net change 2000 (SIC)- 2005	57	54,370	41
Employment in government and government enterprises (NAICS) 2005	221	92,756	43
Earnings in all industries (NAICS, no code) 2005	21,141	19,787,993	50
Earnings in all industries (NAICS, no code), average earnings per job 2005	17,780	32,258	53
Average travel time to work for workers 16 years and over not working at home 2000	13.2	17.7	48
Private nonfarm establishments 2005	66	35,736	47
Private nonfarm employment for pay period including March 12, 2005	244	326,887	48
Private nonfarm employment for pay period including March 12, 2005, percent change 2000-2005	28.4	10.40	3
Nonemployer: total (NAICS 00) establishments, 2005	140	80,851	47
Accommodation and Food Services: total (NAICS 72) - sales of establishments with payroll 2002	1,250	1,537,986	46
Total number of firms 2002	197	100,402	47
Manufacturing: total (NAICS 31-33) - value of shipments 2002	0	4,987,577	40
Wholesale trade: total (NAICS 42) - sales of establishments with payroll 2002	0	7,223,420	50
Retail trade: total (NAICS 44-45) - sales of establishments with payroll 2002	12,175	10,122,625	44
Retail trade: total (NAICS 44-45) - sales of establishments with payroll per capita 2002	6,660	11,116	25
Land in farms (NAICS) 2002(acres)(not adjusted)	1,521,618	59,612,403	14

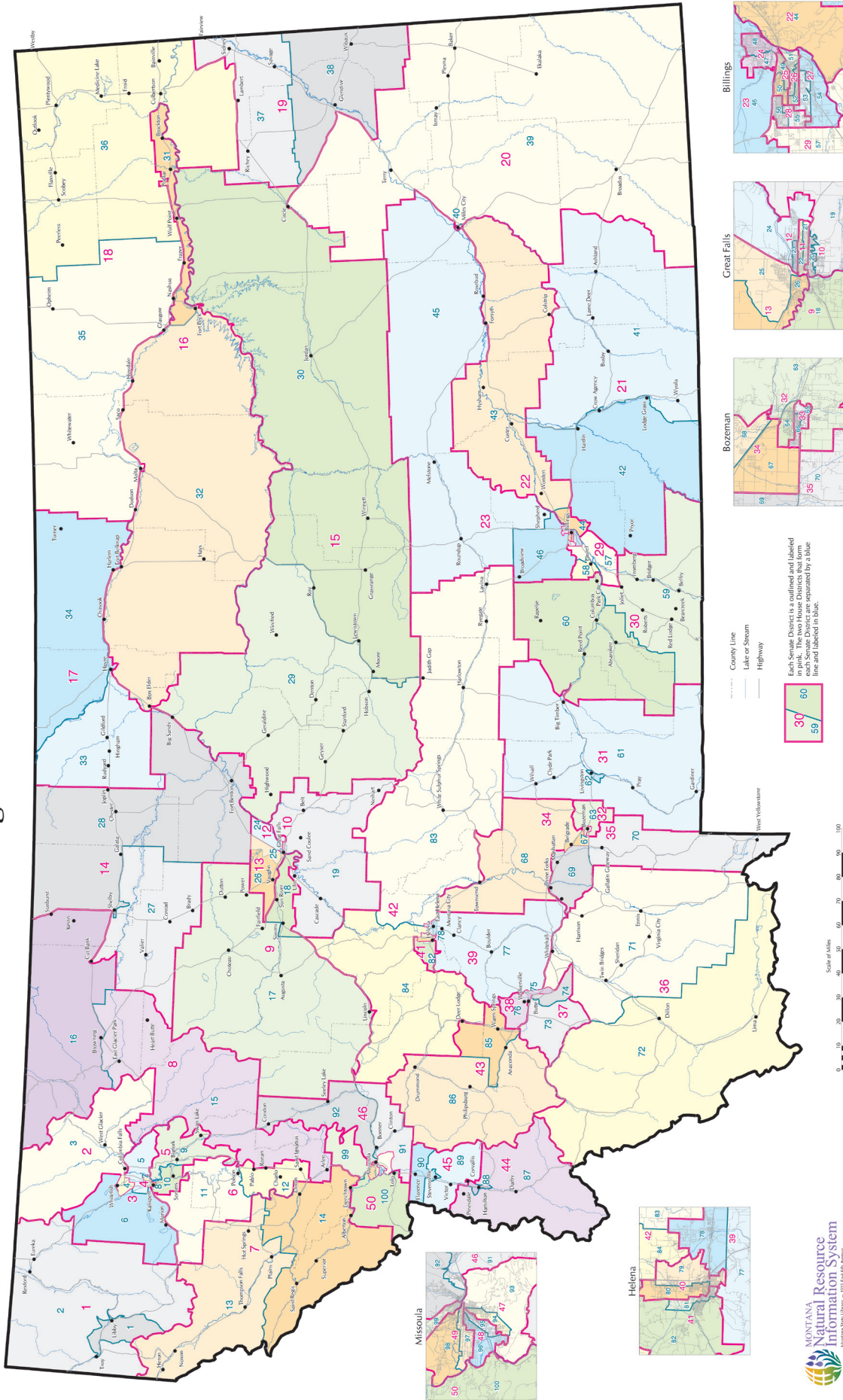
Source: U.S. Census Bureau

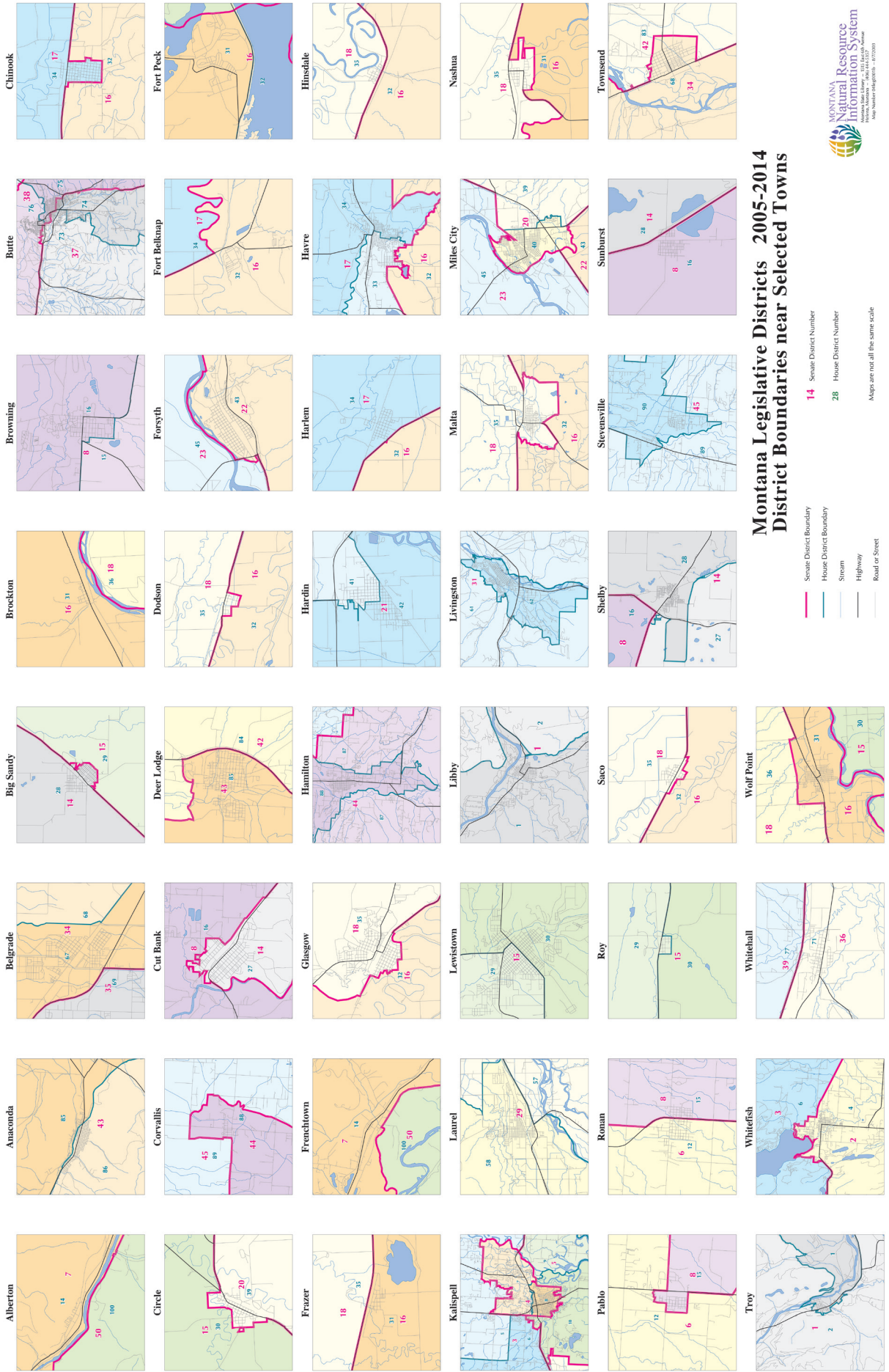
Prairie County Index

	County	Montana	Rank in MT
Geography			
Population per square mile 2000	0.7	6.2	52
Households 2000 (complete count)	537	358,667	51
Persons per household 2000 (complete count)	2.2	2.5	56
Resident Population			
Estimate (July 1) 2006	1,074	944,632	53
Estimate, percent change - April 1, 2000 to July 1, 2006	-10.4	4.7	49
Estimate, net change - April 1, 2000 to July 1, 2006	-125	42,437	32
(April 1) 2000 (complete count)	1,199	902,195	52
Under 5 years of age (July 1) 2006	40	57,916	52
Under 5 years of age, percent (July 1) 2006	3.7	6.1	46
Under 18 years of age (July 1) 2006	177	217,848	54
Under 18 years of age, percent (July 1) 2006	16.5	23.1	56
65 years and over (July 1) 2006	247	130,592	51
65 years and over, percent (July 1) 2006	23.0	13.8	5
Total females, percent (July 1) 2006	48.8	50.0	45
White alone (July 1) 2006	1,054	858,140	53
Black alone (July 1) 2006	1	4,094	49
American Indian and Alaska Native alone (July 1) 2006	5	60,725	54
Asian alone (July 1) 2006	3	5,699	49
Native Hawaiian and Other Pacific Islander alone (July 1) 2006	0	527	53
Population 5 years and over, percent speaking language other than English at	3	5	46
Civilian noninstitutionalized population, 5 years and over, with a disability 2000	182	145,732	54
Vital Statistics			
Births 2004	7	11,519	54
Deaths 2004	18	8,094	46
Infant deaths under one year 2004	0	52	44
Population 5 years and over by residence in 1995 - percent in same house 2000 (sample)	67.2	53.6	11.0
Percent foreign born population 2000 (sample)	1.2	1.8	39
Education			
Educational attainment - persons 25 years and over - percent high school graduate or higher 2000	78.8	87.2	49
Educational attainment - persons 25 years and over - percent bachelor's degree or higher 2000	14.8	24.4	47
Income/Poverty			
Per capita income in 1999	14,422	17,151	43
Median household income 2004	31,221	35,574	34
People of all ages in poverty - percent 2004	11	14	42
Personal Income (NAICS) 2005	32	27,122	52
Per capita personal income (NAICS) 2005	29,269	29,015	17
Federal			
Federal Government expenditure - total FY 2004	12,492	7,493,567	53
Federal Government expenditure per capita FY 2004	10,891	8,085	14
Housing			
Housing unit estimates as of July 1, 2006	714	432,023	52
Housing unit estimates - net change, April 1, 2000 (base) to July 1, 2006	-4	19,390	36
Housing unit estimates - percent change, April 1, 2000 (base) to July 1, 2006	-0.6	4.7	50
Owner-occupied housing units - percent of total occupied housing units 2000 (complete count)	77.5	69.1	6
Median value of specified owner-occupied housing units 2000 (sample)	36,500	99,500	54
Housing units by units in structure - multiple units 2000 (sample)	6.1	15.70	38
New private housing units authorized by building permits - total 2006 (20,000-place universe)	0	4,542	52
Valuation of new private housing units authorized by building permits 2006	0	723,109	52
Employment/Business			
Civilian labor force 2006	552	493,842	52
Civilian labor force unemployment 2006	20	15,680	52
Civilian labor force unemployment rate 2006	3.6	3.2	21
Employment in all industries (NAICS) 2005	704	613,425	52
Employment in all industries (NAICS), net change 2000 (SIC)- 2005	41	54,370	43
Employment in government and government enterprises (NAICS) 2005	177	92,756	48
Earnings in all industries (NAICS, no code) 2005	17,428	19,787,993	52
Earnings in all industries (NAICS, no code), average earnings per job 2005	24,756	32,258	35
Average travel time to work for workers 16 years and over not working at home 2000	13.6	17.7	45
Private nonfarm establishments 2005	33	35,736	51
Private nonfarm employment for pay period including March 12, 2005	131	326,887	52
Private nonfarm employment for pay period including March 12, 2005, percent change 2000-2005	-25.1	10.40	56
Nonemployer: total (NAICS 00) establishments, 2005	76	80,851	54
Accommodation and Food Services: total (NAICS 72) - sales of establishments with payroll 2002	0	1,537,986	56
Total number of firms 2002	104	100,402	53
Manufacturing: total (NAICS 31-33) - value of shipments 2002	0	4,987,577	42
Wholesale trade: total (NAICS 42) - sales of establishments with payroll 2002	0	7,223,420	52
Retail trade: total (NAICS 44-45) - sales of establishments with payroll 2002	4,024	10,122,625	53
Retail trade: total (NAICS 44-45) - sales of establishments with payroll per capita 2002	3,390	11,116	48
Land in farms (NAICS) 2002(acres)(not adjusted)	619,684	59,612,403	40

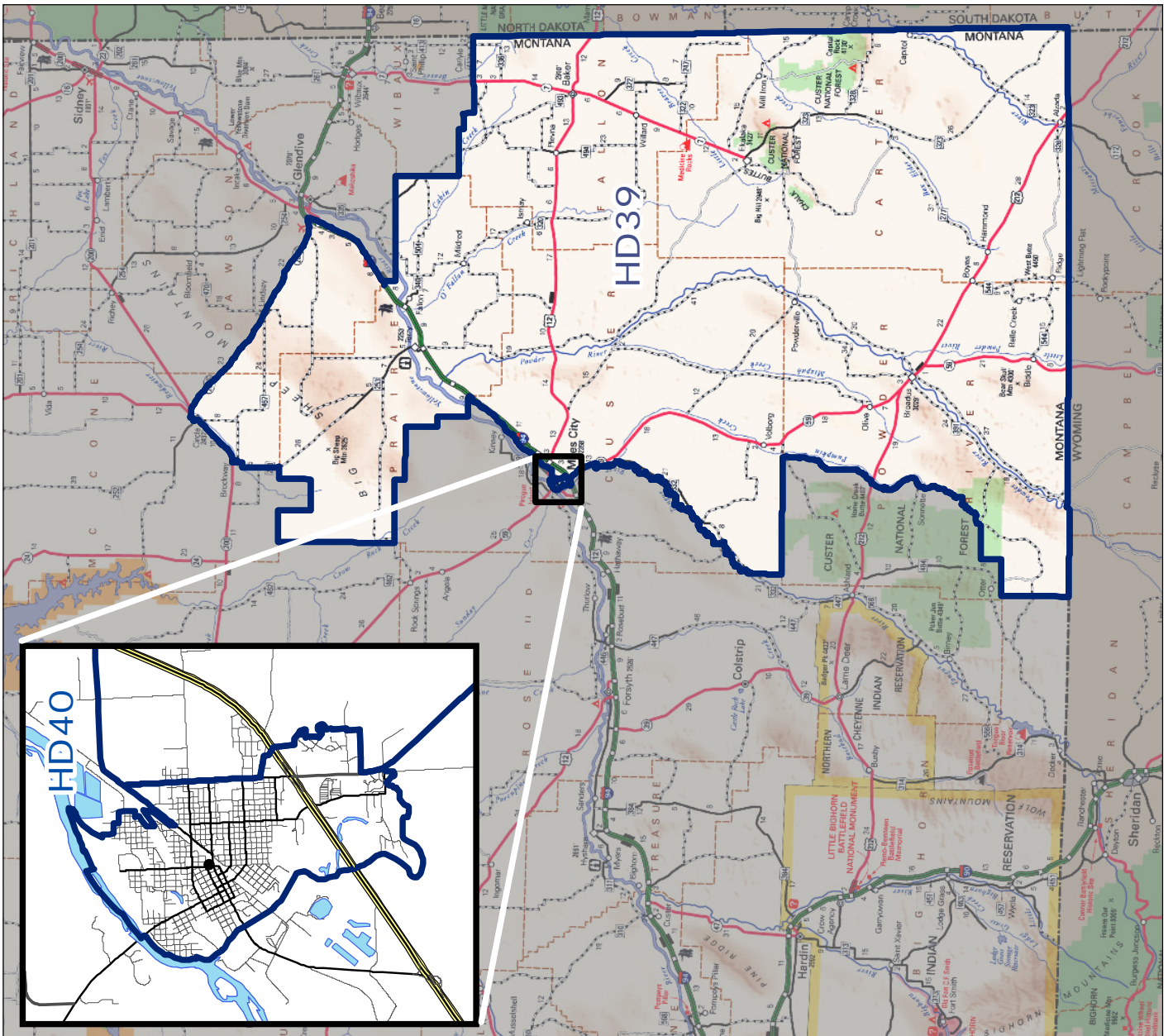
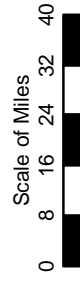
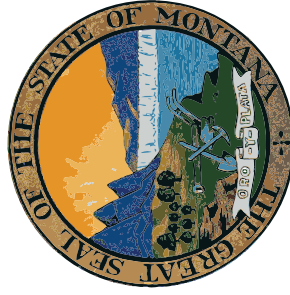
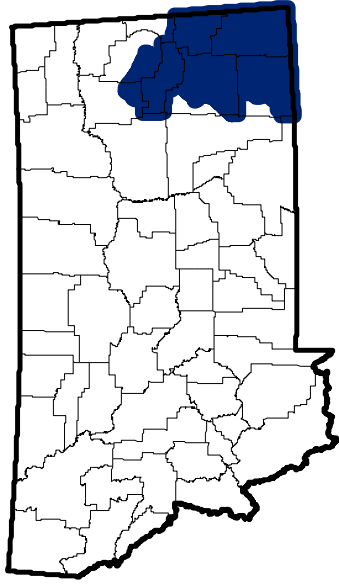
Source: U.S. Census Bureau

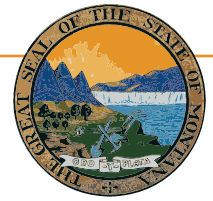
Montana Legislative Districts 2005-2014





Montana Senate District 20





Montana State Library

1515 East 6th Avenue
PO Box 201800
Helena, MT 59620
(406) 444-3115

<http://msl.mt.gov>

Statewide Library Resources

- 5,000+ Online Magazines
- Ask Montana
- **Montana Shared Catalog**
 - 91 participating libraries
 - 2.3 million items
- **Montana Library Directory**

<http://mymontanalibrary.org>

<http://askmontana.org>

http://msl.mt.gov/For_Librarians/Library_Directory

Montana State Digital Library

- **Library Information Services**
 - Electronic Reference Materials
 - Online Magazines & Journals
 - Montana State Library catalog
 - Research Databases
 - Digital State Publications
- **Natural Resource Information System**
 - Maps and Geographic Information
 - Montana Digital Atlas/Map Gallery
 - Online maps & databases
 - Water Information
 - Montana GIS Portal
- **Natural Heritage Program**
 - Montana Field Guide
 - Animal, plant, and habitat information
 - Natural Heritage Tracker

http://msl.mt.gov/for_state_employees/journals.asp

<http://msl.mt.gov/msc>

http://msl.mt.gov/For_State_Employees/Find_Databases

http://msl.mt.gov/for_state_employees/State_Publications

<http://nris.mt.gov>

<http://nris.mt.gov/gis>

<http://nris.mt.gov/interactive.html>

<http://nris.mt.gov/wis>

<http://gisportal.mt.gov/Portal/>

<http://mtnhp.org/>

<http://fieldguide.mt.gov/>

<http://mtnhp.org/Tracker>

Montana Talking Book Library

- 60,000+ titles circulated to 3,000+ patrons
- State of the art digital recording booth: 800+ Montana recorded books
- On-line catalogs and services – WebOpac WebBraille
- Descriptive video collection and newspaper services
- Braille Books: TwinVision and embossed

http://msl.mt.gov/talking_book_library

<http://www.klasweb.msl.mt.gov>

Montana State Library In-House Partners

- **Montana Fish, Wildlife & Parks**
- **Natural Resources Conservation Service**

<http://fwp.mt.gov>

<http://www.mt.nrcs.usda.gov/>

Legislative Snapshot

- This booklet is available online with live links and will be updated regularly as new data becomes available.

http://msl.mt.gov/legislative_snapshot/