

Legislative Snapshot 2009

Includes information for the State of Montana,
Senate District 2, and House Districts 3 and 4.

http://msl.mt.gov/legislative_snapshot/



Senate District 2

Senator Ryan Zinke (R)

409 W 2nd Street
Whitefish, MT 59937-3010



House District 3

Representative Dee Brown (R)

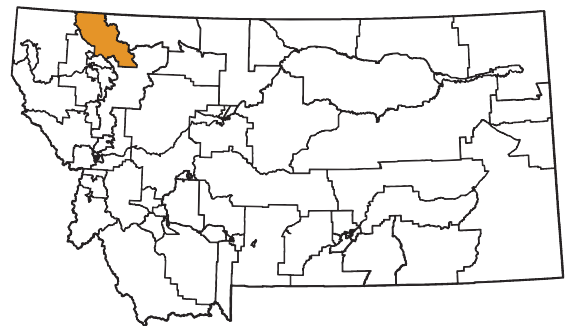
PO Box 444
Hungry Horse, MT 59919-0444



House District 4

Representative Mike Jopek (D)

PO Box 4272
Whitefish, MT 59937-4272



Letter from the Montana State Librarian

On behalf of the Montana State Library, I would like to welcome you to the 2009 legislative session. Our information experts have compiled this booklet to be a resource to you as you take on the important work of representing the collective needs of all Montanans and the special needs of your district during this legislative session.

As in past editions, we have included a wide range of information that, after reviewing proposed bills and following national and state trends through various mediums, we believe will likely be major themes in this legislative session. To that end, you will find up-to-the-minute information on our state's economy, energy production and development, and land and water use. Education is always an important issue, and you will find relevant information on our state's public schools and test scores, as well as on the libraries that help to augment what our schools do. Fire and drought have continued to ravage certain parts of Montana, and you will be able to take a look at the most current information available on maps created here at the State Library. Finally, wildlife and recreation will always be an important part of Montana life, and we've pulled several highlights from our collection that might help to guide your decision-making this session.

The Montana State Library is a small and very unique agency. We employ not only librarians, but GIS specialists and cartographers and partner with botanists and zoologists, as well as federal and state agencies. We manage an enormous collection of state publications, as we simultaneously work to ensure that Montana's blind and physically disabled have access to reading materials and information.

We created this book for you to demonstrate the power of what a diverse staff with amazingly diverse skills can do to make information in many different forms available to every Montanan. We are very proud of what we do here at the State Library as we work to empower Montanans by providing access to information, enhancing learning in families and communities, and building 21st Century skills.

We hope that you use this book throughout the session and stop by to see us – in person or virtually. Whether you visit us at our facility or online, you will be able to browse our collection of government information, get help researching a specific issue, or find a quiet place to work or meet with colleagues. We are located one block east of the Capitol, behind the Historical Society, at the north end of the Justice building. And of course, our services are available 24 hours a day, seven days a week at <http://msl.mt.gov>.

Sincerely,



Darlene Staffeldt
Montana State Librarian



Senate District 2 House District 3 House District 4

Table of Contents

2	Recent Performance of the Montana Economy and its Industries
6	Montana Notable Rankings
7	Demographics
8	Education
9	Libraries
11	Land
12	Water
13	Fire and Drought
14	Energy, Mines
15	Wildlife and Recreation

Appendices

- i Library Directory
- iii State of Montana Index

Senate District 2 County Indexes

- iv Flathead County

Maps

- v Legislative Districts
- vii Senate District 2

Recent Performance of the Montana Economy and its Industries

Source: Montana Department of Labor, Research and Analysis Bureau

Montana has been outperforming the nation in terms of employment growth, wage growth, and unemployment since 2001. Montana's unemployment rate fell below the national rate in 2001 and has remained lower ever since. Montana's annual unemployment rate in 2007 was the 8th lowest in the nation.

Montana's economy has also outperformed the nation in terms of employment growth. Over the 1997-2007 time period, employment in Montana grew at an annual compounding growth rate of 2.1% compared to a national rate of only 1.1%. Job growth in Montana has been speeding up in recent years. Employment grew at a compounding rate of 2.4% annually over 2002-2007, then at a compounding rate of 2.8% annually from 2005-2007.



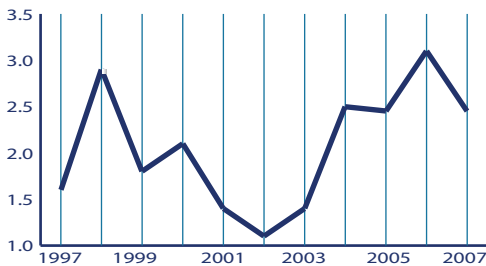
employment and earnings for business owners in addition to payroll workers.

Government, which includes federal, state, and local government and school districts, is an important part of the Montana economy. Government is the largest employer in the state, totaling 14.6% of the jobs in the state. Government constitutes 15.6% of the state's GDP and provides 22% of the state's personal income earned from work. While the GDP and personal income attributed to government work has grown at about 5.5% per year since 2004, employment in this industry has not increased. Government employment has a 0% growth rate since 2004.

As for private industry, the Montana economy can be divided into three categories based on their roles in the economy: base industries, consumer-based industries, and business-support industries. Base industries bring new money into Montana

through exports and can drive growth in other industries through this increase in wealth. In Montana, the base industries are generally natural-resource-based and include agriculture, wood products, manufacturing, energy, and the mining of metals, oil and gas, coal, and other substances. Tourism is also partially a base industry to the extent that it brings new money into Montana, although many of the state's tourists come from within the state. Although employment in base industries is not large, base industries usually pay higher wages than other industries,

Montana Change in Total Employment



Source: Quarterly Census of Employment and Wages (QCEW) Program

Average wages in Montana have also been on the rise, outpacing both inflation and the national average since 2005. Increasing real wages are good news for workers and businesses alike. Workers can increase their standard of living, while businesses benefit because workers have more money to buy goods and services.

There is not one particular industry that was responsible for the recent economic growth in Montana – all industries have been experiencing growth. The following paragraphs examine the performance of Montana's industries in recent years using the Bureau of Economic Analysis (BEA) data for state Gross Domestic Product (GDP), employment, and personal income earnings from work. The BEA data includes an estimate of

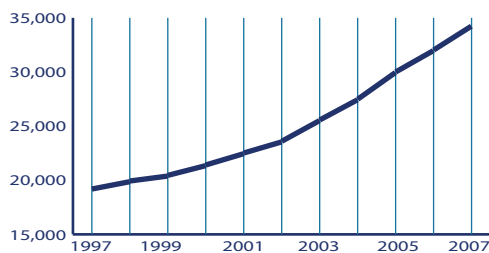
2007 Montana Annual Employment Averages

	Units		Employed	
	Count	Change from 2006	Count	Change from 2006
Total All Industries	42,386	3.4	436,695	2.5
Total Private	40,177	3.4	356,765	3.0
Agriculture, Forestry, Fishing & Hunting	950	1.2	4,532	2.3
Mining	410	8.2	7,474	2.4
Utilities	233	0.9	3,045	2.6
Construction	6,359	5.7	32,286	7.0
Manufacturing	1,381	0.7	20,437	1.3
Wholesale Trade	2,286	3.0	16,938	2.5
Retail Trade	4,816	1.3	58,388	4.0
Transportation And Warehousing	1,304	4.3	11,017	2.1
Information	783	1.8	7,621	-1.5
Finance And Insurance	2,059	6.4	15,556	-2.5
Real Estate And Rental And Leasing	1,823	5.1	6,027	-0.4
Professional And Technical Services	4,097	3.9	19,004	2.3
Management Of Companies And Enterprises	113	18.9	1,438	17.7
Administrative And Waste Services	2,001	5.9	20,264	11.3
Educational Services	398	5.9	4,080	-0.4
Health Care And Social Assistance	3,171	4.5	54,270	2.2
Arts, Entertainment, And Recreation	1,225	4.2	11,425	5.6
Accommodation And Food Services	3,276	-0.8	46,738	1.7
Other Services	3,310	1.0	15,980	0.9
Total Government	2,210	3.8	79,931	0.0

Source: Department of Labor and Industry, Research and Analysis Bureau

making these jobs contribute more to personal income and GDP growth than other jobs. The industries of farming, forestry, mining, utilities, and manufacturing made up 11.8% of the employment in Montana, but 13.3% of personal income and 17.1% of the state's GDP in 2006.

Montana Historical Gross Domestic Product (GDP)
(millions of current dollars)



Source: U.S. Department of Commerce, Bureau of Economic Analysis

Of these base industries, mining has been the fastest growing industry for GDP in Montana in recent years, largely because of increased prices for metals, oil, gas, and energy. Mining represents 6.8% of the state's GDP, but has a growth rate of 24% over the 2005 to 2007 period. Mining employs 1.4% of workers in Montana, and has a growth rate for employment of 7% from 2004 to 2006.

While the natural-resource-based industries have traditionally been the driver of the Montana economy, consumer- and service-based industries are becoming increasingly important, particularly in the fast-growing Western portion of Montana. Consumer-based industries are industries where growth depends on an increase in population or income, such as construction, retail, health care, or entertainment. Continued growth in these industries relies on continued population and wage growth.

Consumer-based industries tend to be large employers, but usually pay lower wages because of a predominance of lower-skilled jobs. For example, retail trade is the largest private industry in Montana for employment, employing over 75,000 workers. However, many of the jobs in the retail industries are low-skilled and low-wage. The consumer-based industries of real estate, construction, health care, education, retail, accommodation, services,

and entertainment comprise 52.7% of the employment in Montana, and produce 41.4% of the state's GDP and 40.6% of the personal income from work earnings in 2006.

In recent years, real estate and construction have played large roles in the growth of Montana's economy. Real estate is the largest private industry in the production of state GDP, representing 10.7% of the state's GDP. The real estate industry has experienced a GDP growth rate of 4.8% over the last two years – slower than the industry average. Construction was the fastest growing employer, adding 10.3% of jobs from 2004-2006 and comprising 8.5% of Montana's jobs in 2006. However, these two industries have been impacted by the national slowdown in housing and will likely experience slower growth in the upcoming years.

The health care industry continues to grow in importance in the Montana economy. After government and retail trade, health care is the third largest industry in terms of employment, with 10.1% of Montana's workers within the industry. Health care provides 11.9% of the state's earnings from work and 8.9% of the state's GDP.



Montana Employment Projections Top 20 Fastest Growing Industries

	Industry	2006	2016	Change	% Change	Growth Rate %
	Total, All Industries	523,362	621,092	97,730	18.7	1.7
1	Total Self-Employed and Unpaid Family Workers	95,014	104,375	9,361	9.9	0.9
2	Self-employed workers, primary job	94,516	103,929	9,413	10	1
3	Education and Health Services	94,512	112,973	18,461	19.5	1.8
4	Trade, Transportation and Utilities	89,848	105,889	16,041	17.9	1.7
5	Goods-Producing Domain	64,295	78,564	14,269	22.2	2
6	Leisure and Hospitality	57,267	70,306	13,039	22.8	2.1
7	Retail Trade	56,234	67,011	10,777	19.2	1.8
8	Health Care and Social Assistance	55,986	68,858	12,872	23	2.1
9	Accommodation and Food Services	45,976	55,220	9,244	20.1	1.8
10	Educational Services	38,526	44,115	5,589	14.5	1.4
11	Professional and Business Services	38,246	52,874	14,628	38.2	3.3
12	Public Administration	37,609	40,759	3,150	8.4	0.8
13	Total, All Government	37,609	40,759	3,150	8.4	0.8
14	Food Services and Drinking Places	35,331	41,979	6,648	18.8	1.7
15	Construction	32,392	42,888	10,496	32.4	2.8
16	Financial Activities	22,413	26,741	4,328	19.3	1.8
17	Hospitals	21,939	25,976	4,037	18.4	1.7
18	Manufacturing	20,171	21,063	892	4.4	0.4
19	Professional and Technical Services	18,795	25,007	6,212	33.1	2.9
20	Administrative and Waste Services	18,229	26,044	7,815	42.9	3.6

Source: Department of Labor and Industry, Research and Analysis Bureau

Finally, the third industry category is business support industries, which require a nexus of economic activity to prosper. Business support industries, such as transportation and warehousing, wholesale, management of companies, administrative and waste services, depend on the growth of other industries. Continuing either amenity-driven population growth or economic growth will allow business support industries to prosper. Business support industries comprise 20.8% of Montana's employment, 25.5% of the state's GDP, and 24.2% of personal income from work earnings.

With the recent economic growth, business support industries are some of the fastest growing in the state. The GDP produced by the state's management of companies industry grew at the second fastest rate during 2005-2007 (20.6% annually), followed by administration and waste services with the third fastest growth (15.9% annually). These industries remain small and together comprise only 2.6% of the state's GDP.

In summary, the Montana economy remains fairly reliant on traditional natural-

resource-based industries, particularly mining, to bring in new money into the state. In recent years, consumer-based and service industries have been increasingly important, and now represent the majority of the state's employment. These consumer-based industries rely on amenity-driven population growth and wage growth for continued prosperity. Finally, the business support industries depend on a nexus of population and industry, and have prospered in the rapid economic growth in recent years. All of these industries are interconnected and rely on each other for success.

Challenges to the Montana Economy

National Economic Concerns

During 2006 and 2007, the Montana economy experienced above-average growth in both employment and wages. Using the Quarterly Census of Employment and Wages, payroll employment grew at a rate of 2.5% from 2006 to 2007, with wages growing at a rate of 5.3%.

Following this rapid expansion, a national economic slowdown has impacted the Montana economy during 2008. Montana job growth has been low since the start of 2008, particularly when compared to the rapid growth in previous years. The unemployment rate has increased over one percent since the start of the year. The wood products industry, an important base industry in the Northwestern portion of Montana, has felt the worst impacts. Construction and financial services have also experienced slowdowns, particularly in comparison to the rapid growth in these industries in previous years.

Montana, however, has not been affected by the national slowdown as much as other states. Using unadjusted data on payroll jobs through the first half of 2008, Montana is ranked the third fastest growing state in the U.S. with 5.9% growth in payroll jobs. Alaska and Wyoming are first and second, which indicates that agriculture and oil and gas industries are likely playing a stabilizing role in the economies of these two states and in Montana. High commodity prices for agricultural and energy products encourage growth in

these industries and also help employment in other industries through spillover effects.

Due to more responsible lending and borrowing practices and a strong economy, Montana home prices have remained fairly stable in comparison to other states. According to the Office of Federal Housing Enterprise Oversight, Montana home prices



have risen 3.38% over the year ending June 30, 2008. This increase makes Montana the 8th highest state in the nation for home price increases in the last year. Joining Montana on the top ten list are Wyoming, South Dakota, and North Dakota, whose economies have also been fairly stable in comparison to the rest of the nation.

Regionally, Montana's economic performance is similar to our neighbors, with all of Montana's surrounding states experiencing unemployment increases during 2008. Idaho has experienced the greatest change in its unemployment rate during 2008, followed by Montana and Wyoming, then by the Dakotas. The impact of the national recession is greatest in areas like Idaho and Northwestern Montana that are heavily reliant on the wood products industry, with diminishing effects in agricultural and energy-producing areas.

Aging Workforce

A longer-term challenge for the Montana economy is our aging workforce. According to the U.S. Census Bureau's population projections, the percentage of the Montana population that will be over the age of 65 is expected to reach 25% by 2030, making Montana one of the oldest states in the nation. The aging of our population will likely have obvious impacts on our economy, such as increased demand for health care, greater demand for the arts, and changes in state spending for both education and Medicare.

The aging of the population will also cause significant tightening of Montana's labor force. Again using the U.S. Census Bureau's population projections, the working age population in Montana (ages 18-65) will start to decrease starting in 2014. Without changes to the traditional workplace, Montana businesses may start to experience difficulty finding appropriately trained workers. To meet future job demands, businesses will need to start looking for workers in populations that traditionally have lower workforce participation, such as older workers, women with children, minorities, or non-high school completers. To recruit these workers, businesses will likely need to offer more flexible hours, worker training, or a different mix of benefits than what is traditionally provided. The aging of the Montana population will likely drive changes in Montana's education system as well. There will be fewer young people graduating from Montana high schools and more non-traditional students in the Montana University System. The tightening labor force will likely also increase demand for short-term training programs that allow workers to quickly update their skills for emerging technologies. For example, an

Census 2000 Age and Sex by District

	Montana	Senate District 2	House District 3	House District 4
Total Population	902,195	18,935	9,467	9,468
Percent of Population, Under 18 Years	25.5	25.5	26.7	24.3
Percent of Population, 18 to 24 Years	9.5	7.6	7.6	7.6
Percent of Population, 25 to 44 Years	27.2	29.6	28.7	30.6
Percent of Population, 45 to 64 Years	24.4	25.7	26.1	25.2
Percent of Population, 65 Years and Over	13.4	11.6	10.9	12.2
Median Age (Years)	37.5	38.0	37.8	38.3

Source: U.S. Census Bureau

electrician may need a general background, but will also need short-term training to refine his skills in order to build a wind turbine. Businesses may feel the need to take greater responsibility for job training in order to meet their labor demands, but will likely rely on the state education system to provide standards and certifications.

Regional Imbalance

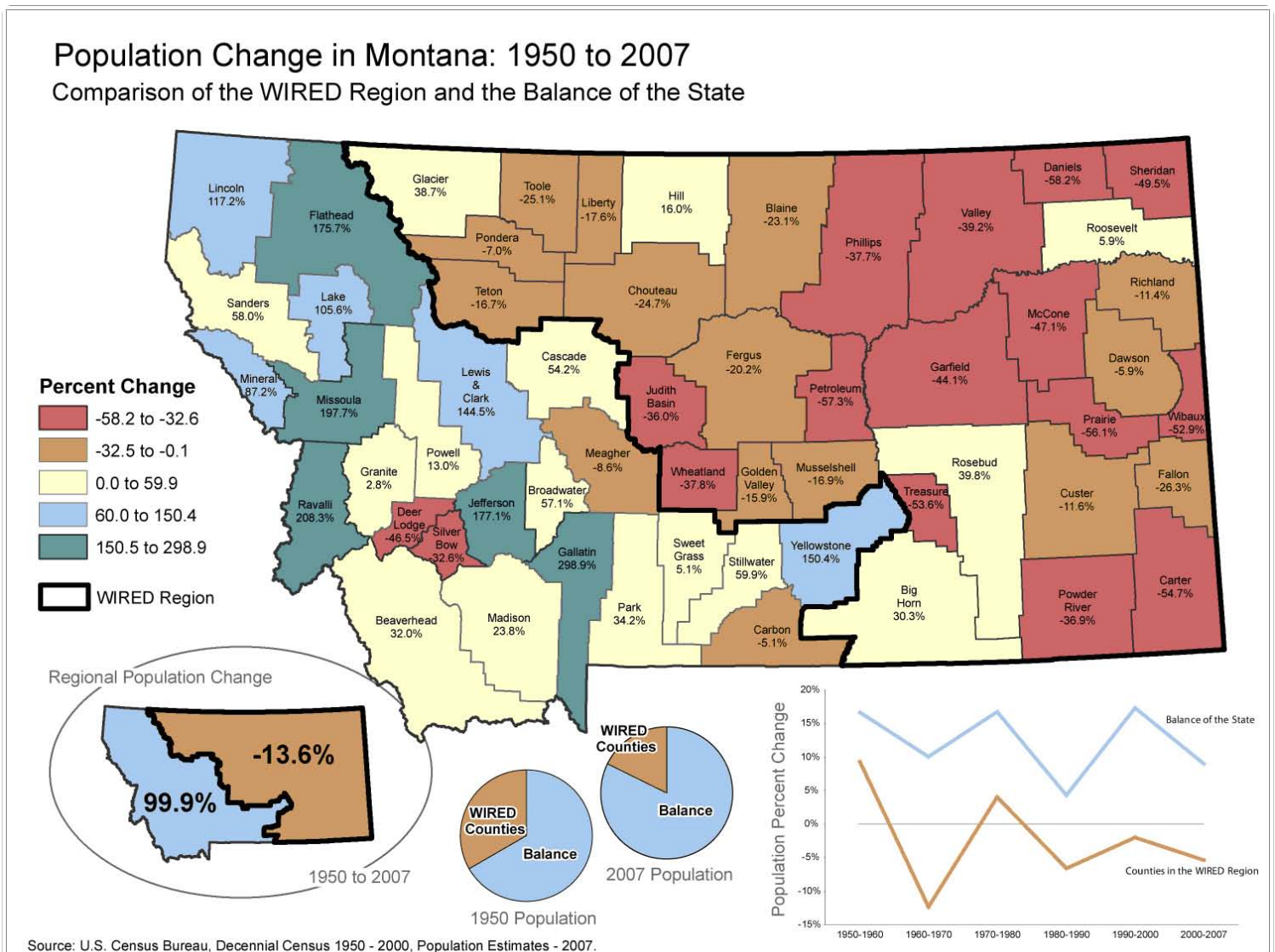
Finally, Montana's economy continues to have regional disparities in prosperity and population growth. Montana remains a fairly rural state, with a population density of 6.5 people per square mile compared to 84.5 people per square mile for the nation (U.S. Census Bureau). In recent years, the population growth in Montana has accelerated, but this population growth

is largely limited to the urban centers and the western portion of Montana. The following map, produced by the Census and Economic Information Center at the Montana Department of Commerce, compares the population change since 1950 in Montana's Workforce Innovation in Regional Economic Development (WIRED) region compared to the balance of the state. The WIRED region is a labor force area designated by the U.S. Department of Labor to receive funding to integrate economic and workforce development. The WIRED region is used here because it includes 32 counties and six Indian Reservations in Eastern and North Central Montana that have been experiencing long-term population and economic declines. Since 1950, the WIRED region has lost 13.6% of

its population; in comparison, the balance of Montana has experienced a population increase of 99.9%. As shown in the graphic below, the population declines are greater in the counties that are further east.

The pattern of population growth (and also economic growth) has also been termed 'the cowboy boot' economy by Governor Brian Schweitzer. Governor Schweitzer's boot economy includes the fast-growing counties of Flathead, Lake, Missoula, Lewis and Clark, Jefferson, Gallatin, and Yellowstone, but also roughly follows the pattern of the WIRED and non-wired counties.

The disparity in population growth between the eastern and western



September 2008 - WIREDPopChange.mxd

portions of the state (or urban or rural, or cowboy-boot or non-boot) has resulted in economic disparities as well. Employment growth in recent years in the nation and in Montana has been driven by consumer-based industries that rely on population increases for economic growth. For example, consumer-based industries in Montana added almost 28,000 jobs to the Montana economy during the 2002 to 2007 period, while natural resource industries only added 3,200 jobs.

per job in the WIRED region in 2007 was \$29,200, while the average wage across the full state was \$32,200. However, the rapid growth in the energy industry has provided hope to reverse these fortunes in the eastern portion of the state in recent years. In fact, wages in the WIRED region have grown at a faster rate than wages in Montana as a whole during the 2000-2007 time period (a compounding annual growth rate of 4.6% compared to 4.1%), despite having slower job growth in the WIRED region, likely due to the addition of high-paying energy jobs.



The lack of consumer-driven industries in the eastern portion of the state has resulted in slow employment growth. Over the 1990-2007 period, the annual compounding rate of job growth in the WIRED region of Eastern and North Central Montana was -0.3% compared to positive growth of 1.8% in the non-WIRED Western and urban counties. The regional disparity also is evident in wages. The average wage

In summary, Montana has large disparity in the economic performance in various areas of the state. The urban centers have experienced strong economic growth, but the rural areas still lag behind in wages and employment. Montana likely will continue to face challenges related to the uneven economic prosperity across the state.

Montana Notable Rankings

	US	Montana	Rank in US
Median age, 2006	36.4	39.2	7
Unemployment rate, April 2008	4.6	3.8	14
Percentage change in home prices, 2005 - 2006	5.59	10.2	8
Percentage of grandparents responsible for their grandchildren	40.5	46.5	22
Percentage of households with one or more people 65 years and over, 2006	23.2	24.4	11
Percentage of children under 6 years old with all parents in the labor force, 2006	61.6	62.0	31
Percentage of people 25 years and over who have completed high school (includes equivalency), 2006	84.1	90.1	4
Percentage of people 16 to 64 years who are in the labor force (including Armed Forces), 2006	74.5	76.0	23
Median monthly housing costs for renter-occupied housing units (dollars), 2006	763	571	46
Percent of housing units that were built in 1939 or earlier, 2006	14.6	18.0	22
Median earnings for full-time, year-round workers (in 2006 inflation-adjusted dollars), 2006	32,649	26,007	49
Median earnings for full-time, year-round workers (in 2006 inflation-adjusted dollars), 2006	42,210	36,378	48
Percentage of civilian population 18 years and over who are veterans, 2006	10.4	14.2	2



- 2.8% of Montanans walk to work, well above the national average.
- Montana ranked 2nd for the percentage of state parks, recreation areas, and natural areas.
- 14% of Montana's civilian population are veterans, placing Montana second in the nation.
- Montana ranked 4th for the percentage of the population 25 and older who graduated from high school.
- Montana has the 4th lowest average travel time to work of any US state.
- Montana ranks 7th in electricity generated from renewable resources.
- Montana residential customers have the 7th lowest electric bill.

Demographics

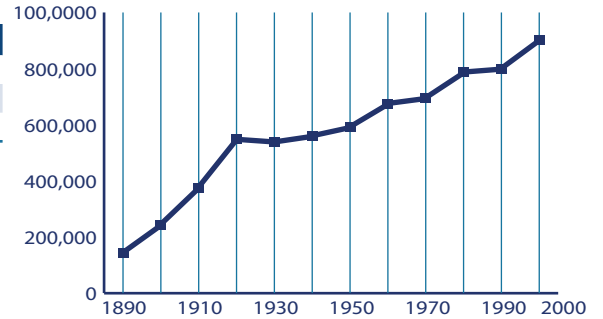
Population Growth in Montana and Selected Counties

Montana's population density is about 6.3 persons per square mile.

	2000 Census	2007 Estimate	Percent Growth
United States	281,421,906	301,621,157	.07
Montana	902,195	957,861	.06
Flathead County	74,471	86,844	16.61

Source: U.S. Census Bureau

Montana Historic Population Growth 1890 - 2000 Censes



Source: U.S. Census Bureau Population

Household Income and Poverty Figures for 2005

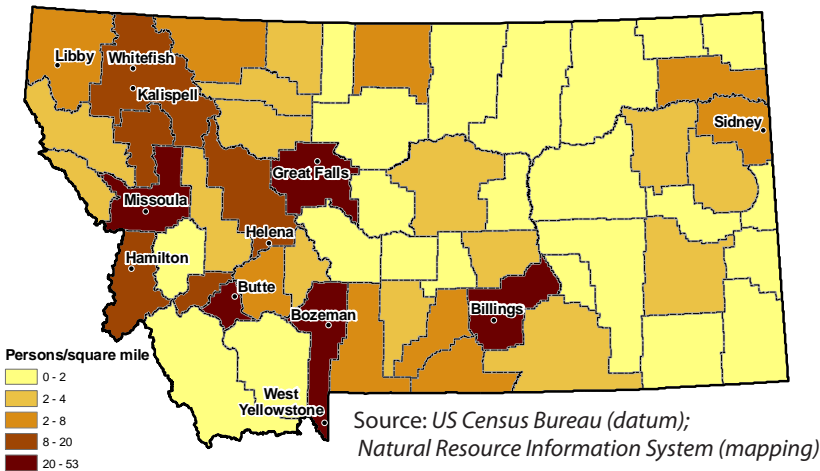
Montana ranked 42nd among all U.S. states for median income in 2005.

	Median Household Income	% in Poverty All Ages	% in Poverty Ages < 18
United States	46,242	13.3	18.5
Montana	38,503	14.6	20.2
Flathead County	39,917	12.5	17.7

Source: U.S. Census Bureau



2007 Population Density Estimates - Total Persons



2007 Population Estimates

	Montana
Male	479,633
Under 18 years	112,664
18 to 64 years	306,876
18 years and over	366,969
21 years and over	346,707
62 years and over	75,218
65 years and over	60,093
Female	478,228
Under 18 years	106,834
18 to 64 years	297,909
18 years and over	371,394
21 years and over	353,066
62 years and over	88,126
65 years and over	73,485
Total	957,861

Source: US Census Bureau, Population Estimates Program

Housing Units for Selected Counties

According to the U.S. Census Bureau, the total number of housing units in Montana increased 4.7% during this period.

	2000	2001	2002	2003	2004	2005	2006	2007	Percent Change (2000 - 2007)
Flathead County	34,773	35,067	35,324	35,693	36,076	36,673	37,310	37,757	8.58

Source: U.S. Census Bureau

Education

Schools in Senate District 2

There are 828 public K-12 and 14 private accredited schools in Montana. Montana also has 21 public and 3 private colleges. Senate and House district figures in the table below show the number of schools located in cities within 10 miles of the district's boundaries.

	Montana	Senate District 2	House District 3	House District 4
High Schools	171	26	10	26
Middle Schools	213	68	20	68
Elementaries	444	154	50	146
Total	828	80	80	240

Source: Office of Public Instruction Website, November 2009

Montana School Size and Enrollment 2007 - 2008

School Size	Percent of Schools	Enrollment	Percent of Enrollment
>500	6	45,133	31
250 to 499	20	55,441	39
100 to 249	20	26,287	18
50 to 99	15	9,152	6
<50	39	7,392	5
Total	100	143,405	100

Source: Office of Public Instruction, September 2008

School Districts - Percentage of in Area

The following table shows the number of school districts with the appropriate percentages in each area. None of the elementary or high school districts have 100% of their area contained within the boundaries of Senate District 2.

	Senate District 2		House District 3		House District 4	
	Elementary	High School	Elementary	High School	Elementary	High School
0 to 9.999 %	8	4	7	3	2	3
10 to 29.999 %	0	1	1	1	1	0
30 to 49.999 %	2	0	1	0	0	0
50 to 69.999 %	0	1	0	1	0	0
70 to 89.999 %	0	0	0	0	0	0
90 to 99.999 %	1	0	1	0	0	0
100 %	0	0	0	0	0	0
Total	11	6	10	5	3	3

Source: Montana State Library, June 2004

Education Statistics

The data listed below is taken from the 2000 census. Senate and House districts shown are based on the current geographic boundaries thanks to Montana's cooperation with the U.S. Census Bureau.

	Montana	Senate District 2	House District 3	House District 4
Population 5 years and over, Percent who speak a language other than English at home, Total, 2000	5.2	3.9	3.4	4.4
Population 5 years and over, Percent who speak a language other than English at home, And speak English less than "very well", 2000	1.5	0.7	0.5	1.0
Population enrolled in elementary or high school, Percent in private school, 2000	7.0	4.8	3.6	6.1
Population, 16 to 19 years, Percent not enrolled in school and not a high school graduate, 2000	8.0	8.2	7.5	9.0
Population 18 to 24 years, Percent enrolled in college or graduate school, 2000	33.8	19.5	19.6	19.4
Population 25 years and over, Percent with less than a 9th grade education, 2000	4.3	3.4	4.9	2.0
Population 25 years and over, Percent high school graduate or higher, 2000	87.2	86.0	83.4	88.5
Population 25 years and over, Percent with bachelors degree or higher, 2000	24.4	21.0	13.0	28.6
Population 25 to 34 years, Percent with bachelors degree or higher, 2000	26.6	27.8	15.2	38.9

Source: U.S. Census Bureau

National Assessment of Education (NAEP) Progress Historical Performance in Montana Schools

Subject	Grade	Year	State Average	National Average	
Mathematics (scale: 0-500)	4	1996 ⁿ	228	222	
		2000	228	224	
		2003	236	234	
		2005	241	237	
		2007	244	239	
	8	1990 ⁿ	280	262	
		1996 ⁿ	283	271	
		2000	285	272	
		2003	286	276	
		2005	286	278	
Reading (scale: 0-500)	4	1994 ⁿ	222	212	
		1998	225	213	
		2002	224	217	
		2003	223	216	
		2005	225	217	
	8	2007	227	220	
		1998	271	261	
		2002	270	263	
		2003	270	261	
		2005	269	260	
2007	271	261			
	Science (scale: 0-300)	4	2000	160	145
		2005	160	149	
		8	1996 ⁿ	162	148
			2000	164	148
2005		162	147		
Writing (scale: 0-300)	4	2002	149	153	
		1998	150	148	
	8	2002	152	152	
		2007	157	154	

ⁿ Accommodations were not permitted for this assessment

Source: National Center for Education Statistics



Libraries

There are 750 libraries in Montana. Senate and House district figures in the table below show the number of libraries located in cities within 10 miles of the district's boundaries. For more detailed information on Montana's libraries visit http://www.msl.mt.gov/For_Librarians/Library_Directory/.

Source: *Montana State Library, December 2008.*

	Montana	Senate District 2	House District 3	House District 4
Public	80	1	0	1
Branches	29	4	2	2
Bookmobiles	3	0	0	0
School	558	41	13	28
Academic	28	1	0	1
Special or Other	52	1	1	1
Total	750	49	16	33

Montana Public Libraries Fast Facts

- **Montana's public libraries hold 3,286,044 items.**
- Montanans visited their public libraries an average of four times throughout the year, for a total of 3,934,580 visits in 2007.
- Montana library patrons checked out 5,606,250 items in 2007, about 6 items per person.
- Librarians in Montana's public libraries fielded 401,180 reference questions in SFY 2007, or 7,715 questions per week.
- 100% of all Montana libraries provide Internet access to patrons
- **Nearly half of all Montanans (424,188) have a library card.**

Montana Talking Book Library

Montana residents who are unable to use standard print materials due to visual, physical and/or reading disabilities may be eligible to borrow recorded books and playback equipment from the Montana Talking Book Library. Eligibility is determined based on National Library Service Standards. Currently, 3,712 Montanans are registered to use this free service.

*All services are provided **FREE** of charge to eligible patrons!*



Talking Book Library volunteers demonstrate the Twin Vision Braille Program.

Source: *Montana Talking Book Library*

Collection

- 67,000+ fiction and non-fiction audio book titles in all genres for all ages
- 80+ audio, Braille, large print and electronic magazines
- 300+ descriptive videos
- 200+ children's Twin Vision books
- Newsline™ telephone audio newspaper service
- Access to Montana Radio Reading newspaper service

**To apply for these FREE services, contact:
(800)-332-3400 Toll Free in Montana
(406) 444-2064 Helena**

Cooperative Free Book Loan Service

- Access to all audio book titles recorded in over 80 regional and sub-regional libraries of the National Library Service

Local Recording and Twin Vision Braille Programs

- Two studios work constantly to record Montana books, magazines, and many other fiction and non-fiction titles. Over 200 Twin Vision (print and illustrated) children's books have been embossed with Braille text.

Online Services

- WebOpac allows users to search the local recording catalog, order items on line and then have them mailed to their door.
- Through WebBraille patrons can download digital Braille books
- The Digital Download Pilot Project allows patrons to download digital audio books. In 2009 the National Library Service (NLS) will unveil its free digital player for use with this service.

Partnerships

- All Montana Public, Academic and Special libraries
- Other organizations include: ophthalmologists, optometrists, Lions Clubs, Blind and Low Vision and Vocational Rehabilitation Services, Low Vision Montana, Blind Support Groups, Veterans facilities, Montana Independent Living Programs, Montana Association for the Blind, as well as all local and national organizations promoting independence to Montanans with visual, physical, and reading handicaps.

Readers' Advisor and Referral Services

- Trained employees conduct book searches to assist patrons in their reading needs and desires. Research is also done for patrons with special needs and appropriate formats are found and referred to the patron for materials needed.

Senate and House district figures in the table below show the number of patrons located in cities within 10 miles of the district's boundaries.

	Montana	Senate District 2	House District 3	House District 4
Total Patrons	3,076	200	74	200
Veterans Who Are Patrons	258	16	5	16
Patron Count by Disability				
Blindness	945	56	28	56
Low Vision	1,435	85	34	85
Physical	267	24	4	24
Reading	435	35	8	35

Source: *Montana Talking Book Library*

Statewide Library Resources

Statewide Library Resources

Statewide Databases



Subscription databases available to all Montana libraries include the Gale Cengage Learning's suite of periodical databases and Ebsco's Auto and Small Engine Repair, Environment Complete and CINAHL, a resource for nursing students.

OCLC



OCLC, Online Computer Library Center, is a nonprofit, membership, computer library service and research organization dedicated to the public purposes of furthering access to the world's information and reducing information costs.

Ask Montana

A free online service for information and research help provided by librarians in Montana and around the world. Since July of 2004 the service has answered more than 4,300 questions.



<http://askmontana.org/>

MontanaLibrary2Go

This service offers library patrons from participating libraries a substantial, continually growing collection of audio, video and music titles from OverDrive, Inc. Content is available for download to personal playing devices.

HeritageQuest

This subscription genealogy database is accessible by all Montana public library patrons and staff. It provides a collection of unique material for both genealogical and historical researchers, with coverage dating back to the late 1700s.

Montana Memory Project

The Montana Memory Project provides access to digital collections and items relating to Montana's cultural heritage and government.



Source: *Montana Historical Society Photo Archive, Montana Memory Project*

Participating Libraries

Senate and House district figures in the table below show the number of libraries located in cities within 10 miles of the district's boundaries.

	Montana	Senate District 2	House District 3	House District 4
Statewide Databases	750	37	16	33
OCLC	249	7	2	7
Ask Montana	20	1	0	1
MontanaLibrary2Go	21	1	0	1
HeritageQuest	80	1	0	1
Montana Memory Project	12	0	0	0

Source: *Montana State Library*

Statewide Library Training

In order to help Montana libraries provide the highest quality of service to patrons, the Montana State Library offers a certification program and a variety of continuing education and training opportunities for Montana librarians, library staff, and trustees.



Total Attendees (56 online) 1,318
 Number of Workshops (23 online) 113
 Number of different Montana locations 44

Time period: October 2007 through September 2008

Source: *Montana State Library*

Montana Shared Catalog Statistics

The Montana Shared Catalog helps Montana libraries meet today's library users demands. It gives Montanans a rich and easy-to-use catalog including more than 2.3 million items which patrons circulated 2,843,665 times from September 2007 to August 2008. Additional groups that partner to share their catalogs include the 4 Rivers, BridgerNet, and Partners groups. Senate and House district figures below show the number of libraries located in cities within 10 miles of the district's boundaries.

Source: *Montana Shared Catalog*

	Montana	Senate District 2	House District 3	House District 4
Participating Libraries	91	5	2	5
Patrons	271,880	49,599	13,522	49,599
Items	2,304,415	241,678	78,353	241,678
Partner Group Libraries	28	3	2	3



Montana Shared Catalog Senate District 2 Public and Branch Libraries

Whitefish Branch Library - *Whitefish*

Flathead County Library - *Kalispell*

Columbia Falls Branch Library - *Columbia Falls*

School librarian Linda Gardner congratulates the first student to check out a book through the newly activated Montana Shared Catalog system at Alberton School Library.

Land

Land Ownership

Senate District 2 ranks number 21 in size and is 1,854.471 square miles, or about 1% of Montana's total land area (146,923.075 square miles). The average senate district in Montana is 2,938 square miles and the average house district is 1,469.

Owner	Montana		Senate District 2		House District 3		House District 4	
	Area (Sq Mi)	%	Area (Sq Mi)	%	Area (Sq Mi)	%	Area (Sq Mi)	%
Private	83,975.739	57.156	117.565	6.340	83.039	4.576	34.526	87.024
Local Government	30.275	0.021	0.002	0.000	0.002	0.000	0.000	0.000
Tribal Land and BIA Trust	8,430.944	5.738	0.000	0.000	0.000	0.000	0.000	0.000
Water	1,319.568	0.898	28.274	1.525	27.968	1.541	0.306	0.771
Montana Fish, Wildlife and Parks	467.888	0.318	0.013	0.001	0.005	0.000	0.008	0.020
State Trust Land	8,060.125	5.486	50.948	2.747	46.114	2.541	4.834	12.185
Other State Land	114.762	0.078	0.000	0.000	0.000	0.000	0.000	0.000
US Bureau of Land Management	12,520.011	8.521	0.000	0.000	0.000	0.000	0.000	0.000
US Fish and Wildlife Service	1,432.092	0.975	0.000	0.000	0.000	0.000	0.000	0.000
US Forest Service	26,403.777	17.971	689.461	37.178	689.461	37.991	0.000	0.000
US National Park Service	1,832.048	1.247	968.138	52.206	968.138	53.347	0.000	0.000
Other Federal Land	369.170	0.251	0.000	0.000	0.000	0.000	0.000	0.000
Plum Creek Timber Lands	1,966.676	1.339	0.071	0.004	0.071	0.004	0.000	0.000
Total	146,923.075		1,854.471		1,814.797		39.674	

Source: Montana Natural Heritage Program, August 2008

Private Land Agricultural Use

Owner	Montana		Senate District 2		House District 3		House District 4	
	Acres	%	Acres	%	Acres	%	Acres	%
Continuous Crop	37,496.664	0.065	2,012.934	4.129	402.765	1.016	1,610.169	17.707
Fallow Crop	12,743,190.043	22.240	40.000	0.082	0.000	0.000	40.000	0.440
Farmstead	54,950.000	0.096	1,123.000	2.304	746.000	1.881	377.000	4.146
Grazing	37,017,002.816	64.604	5,132.132	10.527	4,092.453	10.320	1,039.679	11.433
Irrigated	1,641,330.911	2.865	656.924	1.348	233.624	0.589	423.300	4.655
Timber	5,006,817.111	8.738	38,900.420	79.795	33,804.404	85.242	5,096.014	56.040
Wild Hay	797,870.640	1.392	885.275	1.816	377.944	0.953	507.331	5.579
Total	57,298,658.19		48,750.68		39,657.19		9,093.49	

Source: Montana Department of Administration Information Technology Services Division

Conservation Easements (Acres)

	Montana	Senate District 2	House District 3	House District 4
Bitter Root Land Trust	690.02	0.00	0.00	0.00
City Government	600.54	0.00	0.00	0.00
Clark Fork- Pend Oreille Conservancy	151.16	0.00	0.00	0.00
County Government	527.62	0.00	0.00	0.00
Ducks Unlimited (Wetlands America Trust)	15,362.12	0.00	0.00	0.00
Five Valleys Land Trust	33,710.48	0.00	0.00	0.00
Flathead Land Trust	6,961.13	143.91	66.69	77.21
Gallatin Valley Land Trust	32,137.65	0.00	0.00	0.00
Montana Department of Transportation	508.49	0.00	0.00	0.00
Montana Fish, Wildlife, and Parks	379,062.50	0.00	0.00	0.00
Montana Land Reliance	779,823.97	969.65	656.96	312.68
National Wildlife Federation	19.65	0.00	0.00	0.00
Prickly Pear Land Trust	985.46	0.00	0.00	0.00
Rattlesnake Land Trust	189.54	0.00	0.00	0.00
Rocky Mountain Elk Foundation	47,466.24	0.00	0.00	0.00
Salish and Kootenai Tribe	102.40	0.00	0.00	0.00
The Bighorn Institute	1,443.39	0.00	0.00	0.00
The Nature Conservancy	279,256.25	1,414.62	1,414.62	0.00
The Vital Ground Foundation	673.83	0.00	0.00	0.00
US Bureau of Reclamation	41.61	0.00	0.00	0.00
US Department of Agriculture	14,281.37	0.00	0.00	0.00
US Fish and Wildlife Service	207,447.07	0.00	0.00	0.00
US Forest Service	8,875.86	2,573.91	2,573.91	0.00
Total	1,810,318.34	5,102.08	4,712.19	389.89

Source: Montana Natural Heritage Program

Montana GIS Portal

Additional geographic datum and maps are available through the Montana GIS Portal at <http://gisportal.mt.gov/Portal/>. The new portal provides access to more than 400 databases and over 200 sample maps from the collections of the Montana Base Map Service Center, the Montana State Library, Montana Fish, Wildlife and Parks, and Flathead County.



Water Well Development

There are approximately 195,453 water wells in Montana. 55% of Montana's wells were drilled prior to 1990. 24% were drilled in the 1990's and 21% were drilled since the year 2000.

Year	Montana		Senate District 2		House District 3		House District 4	
	Count	Avg Depth (ft)	Count	Avg Depth (ft)	Count	Avg Depth (ft)	Count	Avg Depth (ft)
Pre 1990	106,736	120.66	1,458	157.98	931	124.26	527	191.70
1990 - 1999	47,608	122.33	793	185.72	480	153.64	313	217.80
2000 - 2007	41,109	135.18	650	218.38	405	188.27	245	248.49
Total	195,453	126.05	2,901	187.36	1,816	155.39	1,085	219.33

Source: Montana Bureau of Mines and Geology's Ground Water Information Center (GWIC). This data was drawn from the GWIC database in July 2007.

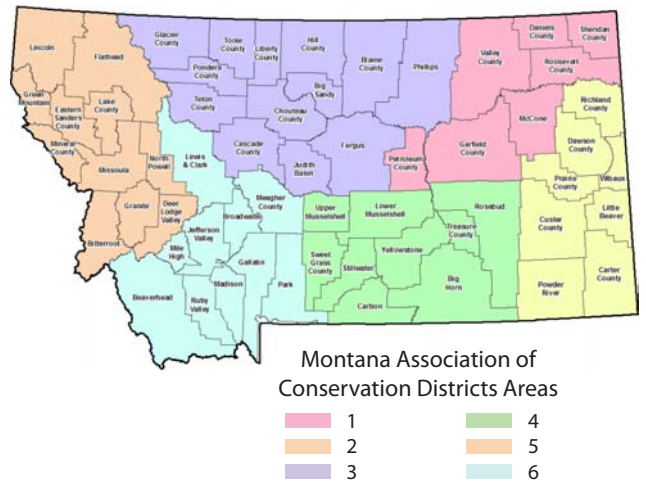
Water Rights

There are 299,021 water rights in Montana. The Department of Natural Resources and Conservation maintains a database of water rights to assist Montana citizens and the Montana Water Court in the water rights adjudication process.

Type	Montana	Senate District 2	House District 3	House District 4
62-73 Ground Water	181	4	1	3
Compact	263	5	5	0
Conservation District	234	0	0	0
Exempt Right	6,248	74	41	33
Ground Water Certificate	76,476	1,371	807	564
Inter-State Claim	7	0	0	0
Irrigation District	211	0	0	0
Powder River Declaration	8,015	0	0	0
Provisional Permit	9,113	223	193	30
Reserved Claim	3,558	0	0	0
Statement of Claim	182,211	591	510	81
Stockwater Permit	3,580	0	0	0
Temporary Permit	13	0	0	0
Water Reservation	8,911	0	0	0
Total	299,021	2,268	1,557	711

Source: Montana Department of Natural Resources and Conservation, Natural Resource Information System, September 2008.

Montana Conservation Districts



Source: Natural Resource Information System, Department of Natural Resources and Conservation, January 2008

Public Water Supplies

There are 3,266 public water supplies located in the State of Montana, 125 of which are located in Senate District 2. These figures do not include public water supplies serving Native American nations.

	Count
House District 3	
Public, community	22
Public, non-community, non-transient	7
Public, transient	67
House District 4	
Public, community	14
Public, non-community, non-transient	1
Public, transient	14

Source: Department of Environmental Quality, December 2007



Dams in Senate District 2

There are 3,666 dams in Montana. Predominant uses are stock/farm ponds (48%) and irrigation (22%).

Source: National Inventory of Dams, USGS Geographic Names Information System

Type	Montana	Senate District 2	House District 3	House District 4
Debris Control	1	0	0	0
Fish and Wildlife Pond	1	0	0	0
Flood Control	43	0	0	0
Hydroelectric	26	0	0	0
Irrigation	822	0	0	0
Recreation	54	1	1	0
Stock/Small Farm Pond	1,771	0	0	0
Tailings	8	0	0	0
Water Supply	44	1	1	0
Other	68	1	0	1
Unknown	828	1	1	0
Total	3,666	4	3	1

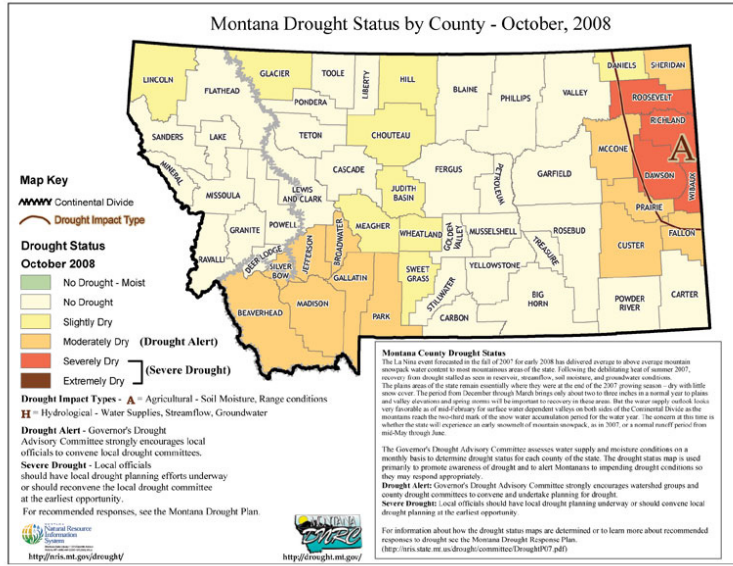
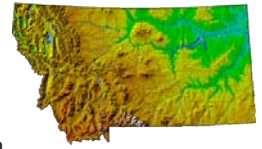
Montana Drought Resources

The Montana Governor's Drought Advisory Committee is charged with monitoring, forecasting, and reporting water supply and moisture conditions, enabling Montanans to make timely and informed decisions to mitigate drought impacts in a proactive manner.

For up to date information and maps on Montana's current drought situation visit <http://drought.mt.gov/default.asp>.

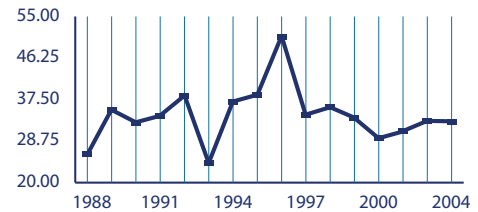
Montana Digital Atlas

Additional mapping and data capabilities are available through the Montana State Library at <http://nris.mt.gov/>. The Montana Digital Atlas provides unlimited access to detailed information on such issues as climate, environmental impacts, land information, water, and cultural data.



Source: Natural Resource Information System

Montana Yearly Average Precipitation (1988 - 2004)



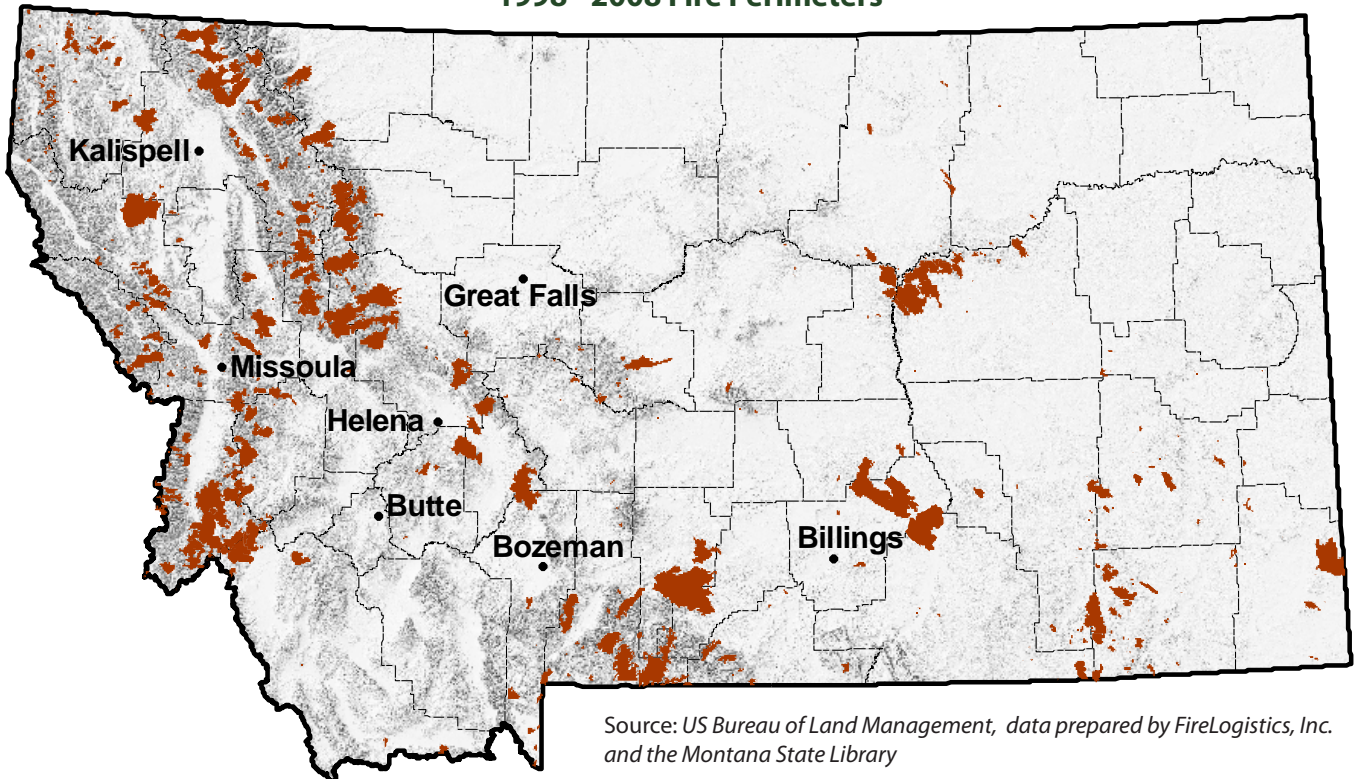
Source: Natural Resources Conservation Service

Montana Fires 2002 - 2007 All Fires from All Agencies

Year	Count	Acreage
2002	1,372	110,309
2003	2,326	736,809
2004	1,447	18,445
2005	1,316	103,294
2006	2,302	1,047,118
2007	1,875	778,079

Source: Department of Natural Resources and Conservation

1998 - 2008 Fire Perimeters



Source: US Bureau of Land Management, data prepared by FireLogistics, Inc. and the Montana State Library

Energy, Mines

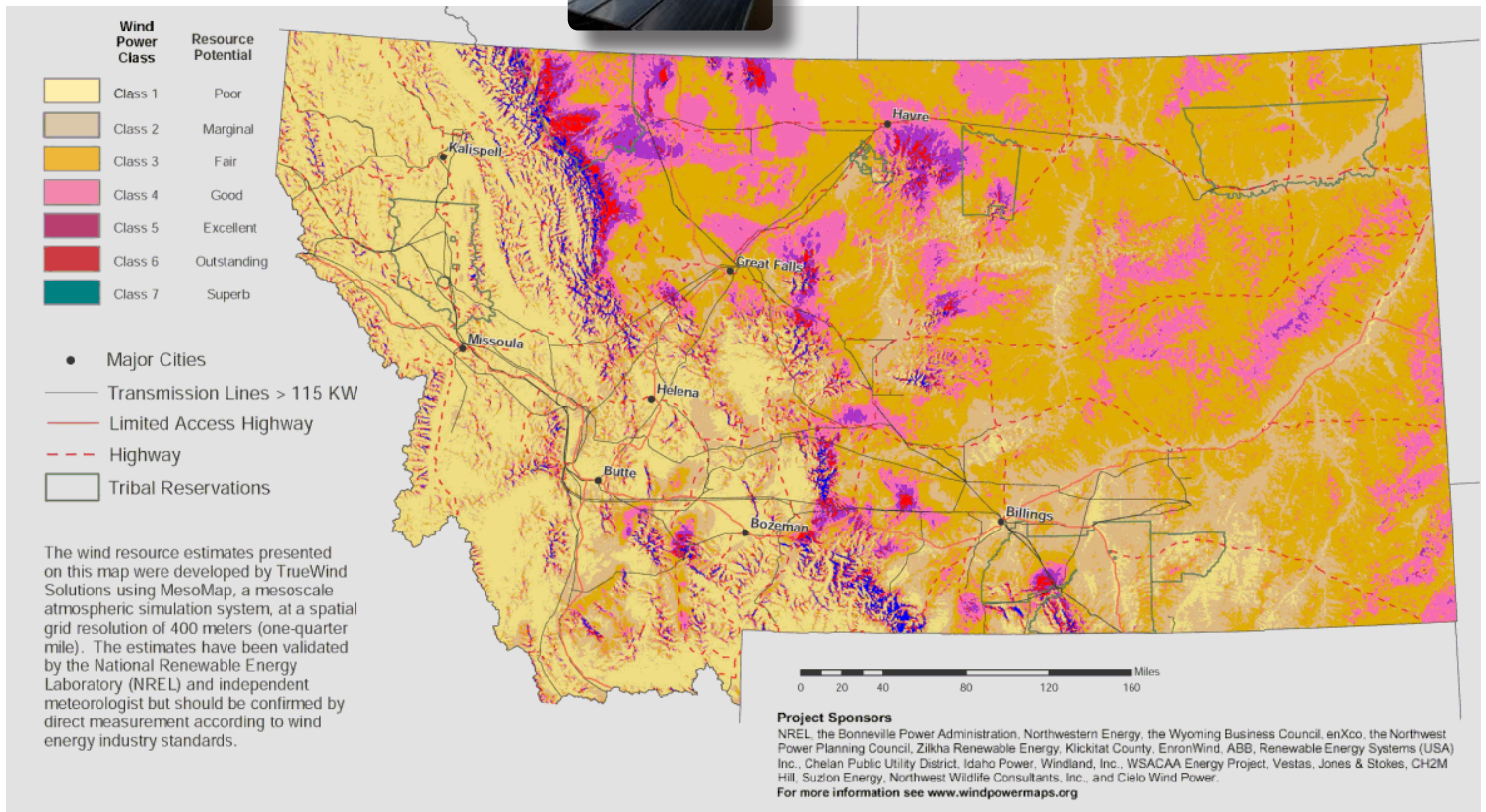
Oil and Gas Wells in Senate District 2

	Montana	Senate District 2	House District 3	House District 4
Coal Bed Methane, Completed	1,042	0	0	0
Coal Bed Methane, Abandoned	36	0	0	0
Coal Bed Methane, Permitted	105	0	0	0
Coal Bed Methane, Under Construction	6	0	0	0
Coal Bed Methane, Water	1	0	0	0
Gas, Completed	6,770	0	0	0
Gas, Abandoned	2,265	0	0	0
Gas, Permitted	284	0	0	0
Gas, Under Construction	210	0	0	0
Gas, Water	49	0	0	0
Oil, Completed	6,835	0	0	0
Oil, Abandoned	4,390	0	0	0
Oil, Gas	2	0	0	0
Oil, Permitted	169	0	0	0
Oil, Under Construction	160	0	0	0
Oil, Water	31	0	0	0
Total	22,355	0	0	0

Source: Montana Board of Oil and Gas Conservation, October 2008



Wind Power Distribution



Find additional energy related data and maps at <http://nris.mt.gov/>

Pipelines in Senate District 2

	Montana		Senate District 2		House District 3		House District 4	
	Count	Miles	Count	Miles	Count	Miles	Count	Miles
Crude Oil	90	1,970	0	0	0	0	0	0
Natural Gas	360	3,301	4	61	3	58	1	3
Refined Product	47	805	0	0	0	0	0	0
Other	24	402	0	0	0	0	0	0
Total	521	6,477	4	61	3	58	1	3

Source: Pipeline Integrity Management Mapping Application, December 2006

Abandoned Mines and Remediation Sites

	Abandoned Mines	Remediation Sites
Montana	6,857	656
Senate District 2	11	6
House District 3	8	4
House District 4	3	2

Source: Montana Department of Environmental Quality, 2008

Montana House Heating Fuel

Occupied housing units		100%
Utility gas	215,892	58.0%
Bottled, tank, or LP gas	48,188	13.0%
Electricity	66,054	17.8%
Fuel oil, kerosene, etc.	6,243	1.7%
Coal or coke	701	0.2%
Wood	30,210	8.1%
Solar energy	285	0.1%
Other fuel	4,012	1.1%
No fuel used	369	0.1%

Source: 2007 American Community Survey 1-Year Estimates

Wildlife and Recreation

Montana is blessed with a wealth of wildlife and habitat diversity. These resources provide exceptional opportunities for recreation and contribute substantially to the state's economy and quality of life.

Wildlife Highlights

For more information on other animals, plants, and habitats in your Senate District, visit the Montana Natural Heritage Program at <http://mtnhp.org>.

Resources include:

- Montana Field Guide – an online encyclopedia of Montana's animals and plants;
- Natural Heritage Tracker – powerful mapping tools;
- Land stewardship maps - show public lands, conservation easements, and special designations;
- Access to NatureServe Explorer – with information on species and habitats for all of North America;
- Publications - over 100 survey, species and ecology reports.
- Expert scientists to ensure accuracy of information;
- Quick, friendly responses to data requests and user support.

Loggerhead Shrike

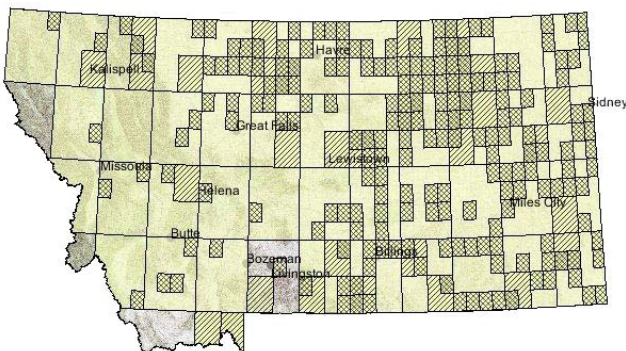
Lanius ludovicianus

The Loggerhead Shrike makes a nest of coarse twigs, with a lining of plant material and animal hair. Shrikes hunt from an open perch, taking insects and occasionally small birds or mammals.

Source: *Montana Natural Heritage Program, Montana Field Guide*



Loggerhead Shrike General Observations



Source: *Natural Heritage Tracker (map)*

Montana Animal and Plant Diversity

Mammals	108
Birds	413
Reptiles	18
Fish	85
Amphibians	13
Vascular Plants	2,400

Montana Big Game Population Estimates

Mule Deer	327,931
White-Tailed Deer	237,496
Antelope	220,500
Elk	138,496
Black Bear	15,500
Bighorn Sheep	5,300
Moose	4,800
Mountain Lion	1,800

Montana Recreation Resources

Public lands acres (multiple use)	26,127,212 acres
Rivers and Streams*	177,000 miles
Cold Water Fishery Streams	15,000 miles
Warm Water Fishery Streams	6,100 miles
Lakes*	845,000 acres
Cold Water Fisheries	400,000 acres
Warm Water Fisheries	350,000 acres

Montana Recreation Sites

Montana State Parks	50
Total acres	34,293 acres
National Parks	7
Total acres	1,172,510 acres
FWP Fishing Access Sites	320
Total acres	24,502 acres
FWP Block Management Acreage	8.5 million
Wildlife Viewing Sites	135
Hiking Trails	2,300
Total miles	15,000 miles
Groomed snowmobile trails	4,023 miles

Montana Wildlife Recreation Facts

Percentage of Montanans (age 16 or older)...	
Who Hunted, 2006	19%
Who Fished, 2006	24%
Who Participated in Wildlife-Watching Activities, 2006	50%
Hunting licenses purchased, 2005	188,299
By Montana Residents	144,642
By Non-residents	43,637
Fishing licenses purchased, 2006	390,214
By Montana Residents	230,426
By Non-residents	159,788
Angler Days Reported by Montana Residents, 2005	2.78 million
Wildlife Viewing by Montana Residents....**	
From Home	389,000
Traveled in the State	510,000
Use of Fishing Access Sites	3.9 million
Personal Watercraft Registered	81,926
Off-Highway Vehicles Registered, 2007	46,707

Montana Economic Impacts of Wildlife Recreation

Spent During Wildlife-Viewing Trips in Montana, 2006**	\$365 million
Spent by Anglers, 2005 (excludes license fees)	\$251.7 million
Hunting-related expenditures	\$302 million

Source: *Montana Natural Heritage Program; Fish, Wildlife and Parks*

* *National Water Quality Inventory: 1998 Report to Congress*

** *2006 National Survey of Fishing, Hunting, and Wildlife and Associated Recreation*

Wildlife and Recreation

Species Diversity in Senate District 2

Senate District 2	
Amphibians	8
Birds	289
Fish	33
Mammals	72
Reptiles	9
Total	411

Source: Montana Natural Heritage Program



Acres of Big Game Winter Range

Big game winter ranges cover a total of 379,688 acres or 31.99% of Senate District 2. The table below identifies the number of acres used by individual species even when these areas overlap with other big game animals.

Senate District 2	
Antelope	0.00
Bighorn Sheep	0.00
Elk	103,234.56
Mountain Goat	0.00
Mule Deer	43,565.76
Moose	352,025.58
White-tailed Deer	110,827.18

Source: Montana Fish, Wildlife and Parks

There are a total of 96 Wildlife Viewing Sites in Montana, three of which are located in Senate District 2.

Recreation Area (Acres)

Senate District 2	
Fishing Access Sites	13.76
State Parks	0.00
Wildlife Conservation Easements	0.00
Wildlife Protection Areas	0.00
Wildlife Management Areas	0.00
Total	13.76

Source: Montana Fish, Wildlife, & Parks

Wildlife Highlights

Northern Pygmy Owl

Glaucidium gnoma

Weighing in at just two to three ounces, the Northern Pygmy Owl with its distinctive eyebrows is a fierce hunter of small birds, mammals and insects.



Source: Montana Natural Heritage Program, Montana Field Guide



Block Management Acreage

There are a total of 7,546,232 acres of Block Management land (excluding Plum Creek*) in the State of Montana. 2,458.27 of those acres or 0.03% are located in Senate District 2.

*Plum Creek land in FWP's Regions 1 and 2 are not included in these statistics. Although they are part of the Block Management Program, they are not traditional BMA's and are managed differently.

Source: Montana Fish, Wildlife & Parks



Fishing and Hunting Licenses by County

	Fishing	Hunting	Total
Flathead County	43,236	46,589	89,825

Source: Montana Fish, Wildlife & Parks

Senate District 2 Libraries

Public



Flathead County Library

Kim Crowley, Library Director
Flathead County
247 1st Ave East Kalispell, MT 59901
(406) 758-5820
Web Site: <http://www.flatheadcountylibrary.org/>
Catalog: http://www.flatheadcountylibrary.org/library_catalog.html
Montana Shared Catalog, Partners Group, OCLC, MyMontanaLibrary2Go, HeritageQuest, Ask Montana Participant, Statewide Databases

Branch



Columbia Falls Branch Library

Deena Stacy, Branch Librarian
Flathead County
130 6th St W #C Columbia Falls, MT 59912
(406) 892-5919
Web Site: <http://www.flatheadcountylibrary.org/>
Catalog: <http://mtscprod.msl.mt.gov/uhtbin/cgisirsi/x/0/0/49>
Montana Shared Catalog, Partners Group, Statewide Databases



Whitefish Branch Library

Joey Kositzky, Branch Librarian
Flathead County
9 Spokane Ave Whitefish, MT 59937
(406) 862-6657
Web Site: <http://www.flatheadcountylibrary.org/>
Catalog: <http://mtscprod.msl.mt.gov/uhtbin/cgisirsi/x/0/0/49>
Montana Shared Catalog, Partners Group, Statewide Databases

Academic



Flathead Valley Community College Library

Michael Ober, Library Director
Flathead County
777 Grandview Drive Kalispell, MT 59901
(406) 756-3856
Web Site: <http://www.fvcc.edu/academics/student-resources/library/>
Catalog: <http://mtscprod.msl.mt.gov/uhtbin/cgisirsi/x/0/0/49>
Montana Shared Catalog, OCLC, Statewide Databases

School

Bissell Public Schools

Amy Peterson, School Librarian
Flathead County
5955 Farm To Market Road Whitefish, MT 59937
(406) 862-2828
Statewide Databases

Canyon Elementary School Library

Stacy Kelch, Librarian
Flathead County
PO Box 1259 Columbia Falls, MT 59912
(406) 892-6543
Web Site: <http://cfsd6.k12.mt.us/canyon/canyon-home.html>
Statewide Databases

Cayuse Prairie Elementary School

Linda Howard, School Librarian
Flathead County
897 Lake Blaine Rd Kalispell, MT 59901
(406) 756-4560
Statewide Databases

Columbia Falls High School

Soozi Crosby, School Librarian
Flathead County
PO Box 1259 Columbia Falls, MT 59912
(406) 892-6500
Statewide Databases

Columbia Falls Jr High School

Karyl Gopp, School Librarian
Flathead County
PO Box 1259 Columbia Falls, MT 59912
(406) 892-6530
Statewide Databases

Cornelius Hedges Elementary School

Nancy Pensa, School Librarian
Flathead County
827 4th Ave E Kalispell, MT 59901
(406) 751-4809
Web Site: <http://hedges-library-rocks.blogspot.com/>
Catalog: <http://destiny.sd5.k12.mt.us/>
Statewide Databases

Creston Elementary School

Judy Hewitt, School Librarian
Flathead County
4495 Montana 35 Kalispell, MT 59901
(406) 755-2859
Statewide Databases

Deer Park Schools

Bobbie Vaden, Librarian
Flathead County
2105 Middle Road Columbia Falls, MT 59912
(406) 892-5388
Statewide Databases

Edgerton School Library

Sandy Streit, Media Specialist
Flathead County
1400 Whitefish Stage Kalispell, MT 59901
(406) 751-4035
Web Site: <http://www.sd5.k12.mt.us/>
Statewide Databases

Elrod Elementary School

Laurie Latimer, Media Specialist
Flathead County
412 3rd Ave W Kalispell, MT 59901
(406) 751-3683
Web Site: <http://www.sd5.k12.mt.us/>
Catalog: <http://destiny.sd5.k12.mt.us/>
Statewide Databases

Evergreen Public Schools

Diane Bagby, School Librarian
Flathead County
18 W Evergreen Drive Kalispell, MT 59901
(406) 751-1118
Web Site: https://www.edline.net/pages/Evergreen_SD50
Statewide Databases

Fair-Mont-Egan Public Schools

Linda Howard, School Librarian
Flathead County
797 Fairmont Rd Kalispell, MT 59901
(406) 755-7072
Statewide Databases

Fortine Elementary School

Dan Smith, Business Manager
Lincoln County
PO Box 96 Fortine, MT 59918
(406) 882-4634
Statewide Databases

Glacier Gateway Elementary School

Terry Divoky, School Librarian
Flathead County
PO Box 1259 Columbia Falls, MT 59912
(406) 892-6540
Web Site: <http://www.sd6.k12.mt.us/gg/gghome.html>
Statewide Databases

Glacier High School Library

John York, Librarian
Flathead County
375 Wolfpack Way Kalispell, MT 59901
(406) 758-8367
Web Site: <http://www.sd5.k12.mt.us/ghs/index.htm>
Catalog: http://destiny.sd5.k12.mt.us/OCLC_Statewide_Databases

Helena Flats Public Schools

Diane Taylor, School Librarian
Flathead County
1000 Helena Flats Road Kalispell, MT 59901
(406) 257-2301
Statewide Databases

Kalispell Middle School

Kerrie More, School Librarian
Flathead County
514 East Washington Kalispell, MT 59901
(406) 751-3840
Web Site: <http://destiny.sd5.k12.mt.us/>
Statewide Databases

Muldown Elementary School

Rita Wolfe, School Librarian
Flathead County
600 E Second Street Whitefish, MT 59937
(406) 862-8620
Web Site: <http://www.wfps.k12.mt.us>
Statewide Databases

Peterson Elementary School

Georgane Sullivan, Media Specialist
Flathead County
1119 2nd Street West Kalispell, MT 59901
(406) 751-3731
Web Site: <http://www.sd5.k12.mt.us>
Statewide Databases

Ruder Elementary Library

Sara Childers, School Librarian
Flathead County
PO Box 1259 Columbia Falls, MT 59912
(406) 892-6570
Statewide Databases

Russell Elementary School

Kathryn Babcock, School Librarian
Flathead County
227 W Nevada Kalispell, MT 59901
(406) 751-3915
Web Site: <http://www.sd5.k12.mt.us>
Catalog: <http://destiny.sd5.k12.mt.us>
Statewide Databases

Smith Valley School District #89 Library

Shelly Means, School Librarian
Flathead County
2901 Highway 2 West Kalispell, MT 59901
(406) 756-4535
Statewide Databases

St Matthew's School Library

Myrna Matulevich, School Librarian
Flathead County
602 Main St Kalispell, MT 59901
(406) 752-6303
Statewide Databases

Trego Elementary School Library

Donald Bulman, Supervising Teacher/Librarian
Lincoln County
PO Box 10 Trego, MT 59934
(406) 882-4697
Statewide Databases

West Glacier Elementary School Library

Anna Stene-Bouley, School Librarian
Flathead County
PO Box 309 West Glacier, MT 59936
(406) 888-5312
Statewide Databases

West Valley Elementary Library

Renell Wilson, School Librarian
Flathead County
2290 Farm To Market Rd Kalispell, MT 59901
(406) 755-7239
Statewide Databases

Whitefish High School Library

Dan Kohnstamm, School Librarian
Flathead County
600 E Second Street Whitefish, MT 59937
(406) 862-8600
Web Site: http://wfps.k12.mt.us/wfhs/library/OCLC_Statewide_Databases

Whitefish Middle School Library

Dana Carmichael, Head of Children's Services
Flathead County
600 E Second Street Whitefish, MT 59937
(406) 862-8650
Web Site: http://wfps.k12.mt.us/Central/library/Central_Library.htm
OCLC, Statewide Databases

Special**George C. Ruhle Library**

Matt Graves, Information Specialist
Flathead County
PO Box 128 West Glacier, MT 59936
(406) 888-7932
Web Site: <http://www.nps.gov/glac/research/library.htm>
Catalog: <http://library.nps.gov>
Statewide Databases

Kalispell Regional Medical**Center Medical Library**

Heidi Sue Adams, Medical Librarian
Flathead County
310 Sunnyview Lane Kalispell, MT 59901
(406) 752-1739
Web Site: <http://www.krmc.org>
Catalog: <http://mtscprod.msl.mt.gov/uhtbin/cgisirsi/x/0/0/49>
Montana Shared Catalog, OCLC, Statewide Databases

State of Montana Index

	Montana	United States	Rank in US
Geography			
Population per square mile 2000	6.2	79.6	27
Households 2000 (complete count)	358,667	105,480,101	22
Persons per household 2000 (complete count)	2.5	2.6	32
Resident Population			
Estimate (July 1) 2006	944,632	299,398,484	23
Estimate, percent change - April 1, 2000 to July 1, 2006	4.7	6.4	34
Estimate, net change - April 1, 2000 to July 1, 2006	42,437	17,973,882	27
(April 1) 2000 (complete count)	902,195	281,421,906	23
Under 5 years of age (July 1) 2006	57,916	20,417,636	24
Under 5 years of age, percent (July 1) 2006	6.1	6.80	30
Under 18 years of age (July 1) 2006	217,848	73,735,562	23
Under 18 years of age, percent (July 1) 2006	23.1	24.6	23
65 years and over (July 1) 2006	14	37,260,352	22
65 years and over, percent (July 1) 2006	130,592	12	12
Total females, percent (July 1) 2006	50.0	50.7	6
White alone (July 1) 2006	858,140	239,746,254	25
Black alone (July 1) 2006	4,094	38,342,549	16
American Indian and Alaska Native alone (July 1) 2006	60,725	2,902,851	30
Asian alone (July 1) 2006	5,699	13,159,343	33
Native Hawaiian and Other Pacific Islander alone (July 1) 2006	527	528,818	36
Population 5 years and over, percent speaking language other than English at	5.2	17.9	48
Civilian noninstitutionalized population, 5 years and over, with a disability 2000	145,732	49,746,248	18
Vital Statistics			
Births 2004	11,519	4,112,052	24
Deaths 2004	8,094	2,397,615	17
Infant deaths under one year 2004	52	27,936	20
Population 5 years and over by residence in 1995 - percent in same house 2000 (sample)	53.6	54.1	13
Percent foreign born population 2000 (sample)	1.8	11.1	45
Education			
Educational attainment - persons 25 years and over - percent high school graduate or higher 2000	87.2	80.4	46
Educational attainment - persons 25 years and over - percent bachelor's degree or higher 2000	24.4	24.4	45
Income/Poverty			
Per capita income in 1999	17,151	21,587	39
Median household income 2004	35,574	44,334	45
People of all ages in poverty - percent 2004	14	13	8
Personal Income (NAICS) 2005	27,122	10,220,942	24
Per capita personal income (NAICS) 2005	29,015	34,471	41
Federal			
Federal Government expenditure - total FY 2004	7,493,567	2,143,781,727	19
Federal Government expenditure per capita FY 2004	8,085	7,300	10
Housing			
Housing unit estimates as of July 1, 2006	432,023	126,316,181	22
Housing unit estimates - net change, April 1, 2000 (base) to July 1, 2006	19,390	10,411,707	24
Housing unit estimates - percent change, April 1, 2000 (base) to July 1, 2006	4.70	9.00	26
Owner-occupied housing units - percent of total occupied housing units 2000 (complete count)	69.1	66.2	4
Median value of specified owner-occupied housing units 2000 (sample)	99,500	119,600	41
Housing units by units in structure - multiple units 2000 (sample)	15.7	26.40	44
New private housing units authorized by building permits - total 2006 (20,000-place universe)	4,542	1,838,903	18
Valuation of new private housing units authorized by building permits 2006	723,109	291,314,492	23
Employment/Business			
Civilian labor force 2006	493,842	151,428,000	23
Civilian labor force unemployment 2006	15,680	7,001,000	29
Civilian labor force unemployment rate 2006	3.2	4.6	38
Employment in all industries (NAICS) 2005	613,425	174,249,600	23
Employment in all industries (NAICS), net change 2000 (SIC)- 2005	54,370	7,490,800	20
Employment in government and government enterprises (NAICS) 2005	92,756	23,837,000	24
Earnings in all industries (NAICS, no code) 2005	19,787,993	7,983,652,000	24
Earnings in all industries (NAICS, no code), average earnings per job 2005	32,258	45,817	32
Average travel time to work for workers 16 years and over not working at home 2000	17.7	25.5	19
Private nonfarm establishments 2005	35,736	7,499,702	26
Private nonfarm employment for pay period including March 12, 2005	326,887	116,317,003	23
Private nonfarm employment for pay period including March 12, 2005, percent change 2000-2005	10.4	2.0	35
Nonemployer: total (NAICS 00) establishments, 2005	80,851	20,392,068	23
Accommodation and Food Services: total (NAICS 72) - sales of establishments with payroll 2002	1,537,986	449,498,718	31
Total number of firms 2002	100,402	22,974,655	24
Manufacturing: total (NAICS 31-33) - value of shipments 2002	4,987,577	3,916,136,712	23
Wholesale trade: total (NAICS 42) - sales of establishments with payroll 2002	7,223,420	4,634,755,112	28
Retail trade: total (NAICS 44-45) - sales of establishments with payroll 2002	10,122,625	3,056,421,997	23
Retail trade: total (NAICS 44-45) - sales of establishments with payroll per capita 2002	11,116	10,615	42
Land in farms (NAICS) 2002(acres)(not adjusted)	59,612,403	938,279,056	32

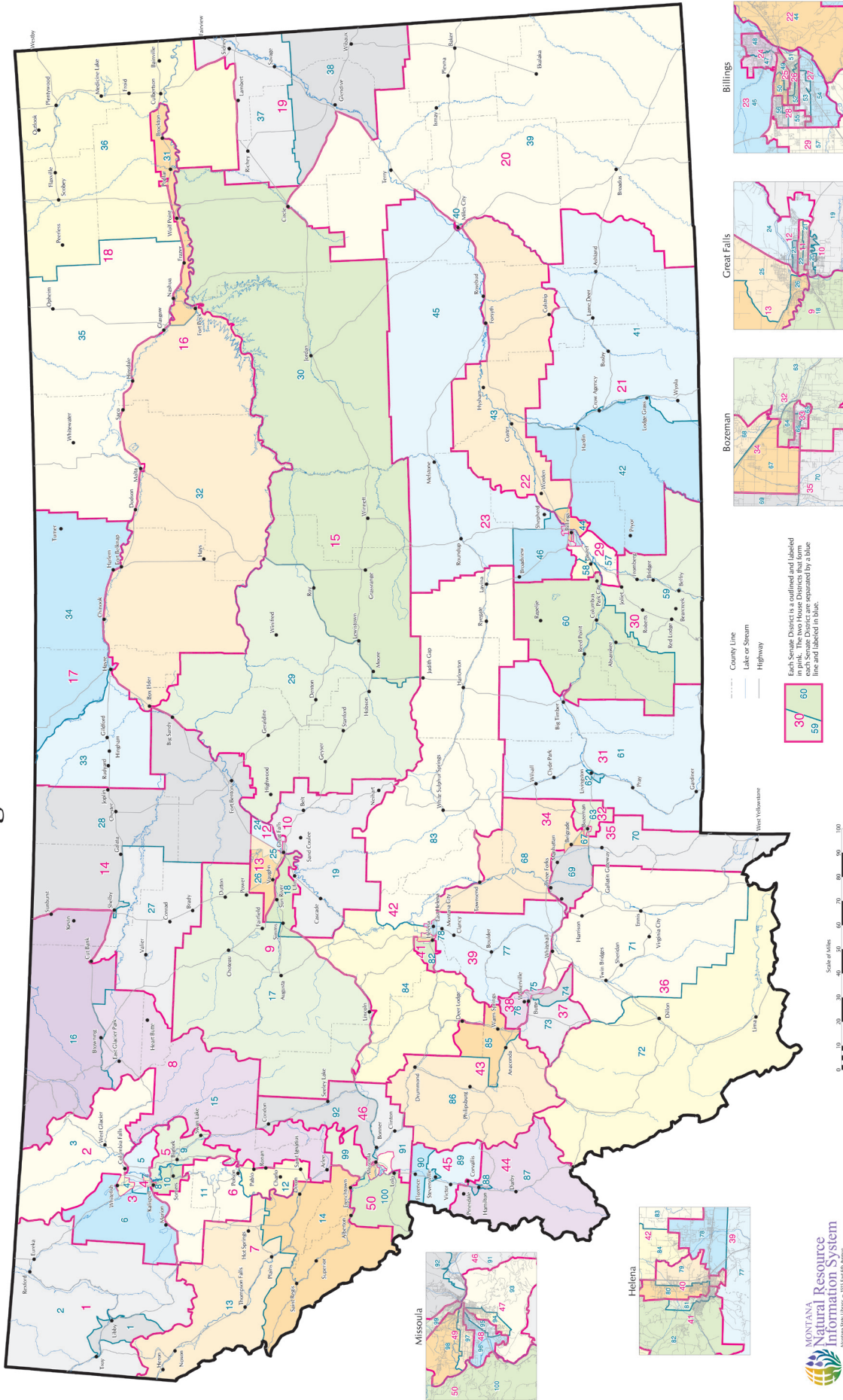
Source: U.S. Census Bureau

Flathead County Index

	County	Montana	Rank in MT
Geography			
Population per square mile 2000	14.6	6.2	9
Households 2000 (complete count)	29,588	358,667	4
Persons per household 2000 (complete count)	2.5	2.5	13
Resident Population			
Estimate (July 1) 2006	85,314	944,632	3
Estimate, percent change - April 1, 2000 to July 1, 2006	14.6	4.7	2
Estimate, net change - April 1, 2000 to July 1, 2006	10,843	42,437	2
(April 1) 2000 (complete count)	74,471	902,195	4
Under 5 years of age (July 1) 2006	5,343	57,916	4
Under 5 years of age, percent (July 1) 2006	6.3	6.1	12
Under 18 years of age (July 1) 2006	19,749	217,848	4
Under 18 years of age, percent (July 1) 2006	23.1	23.1	16
65 years and over (July 1) 2006	10,969	130,592	3
65 years and over, percent (July 1) 2006	12.9	13.8	47
Total females, percent (July 1) 2006	50.2	50.0	21
White alone (July 1) 2006	82,390	858,140	3
Black alone (July 1) 2006	245	4,094	4
American Indian and Alaska Native alone (July 1) 2006	1,109	60,725	12
Asian alone (July 1) 2006	375	5,699	5
Native Hawaiian and Other Pacific Islander alone (July 1) 2006	55	527	4
Population 5 years and over, percent speaking language other than English at	4	5	38
Civilian noninstitutionalized population, 5 years and over, with a disability 2000	11,477	145,732	4
Vital Statistics			
Births 2004	1,045	11,519	4
Deaths 2004	715	8,094	3
Infant deaths under one year 2004	7	52	1
Population 5 years and over by residence in 1995 - percent in same house 2000 (sample)	52.4	53.6	50.0
Percent foreign born population 2000 (sample)	2.1	1.8	9
Education			
Educational attainment - persons 25 years and over - percent high school graduate or higher 2000	87.4	87.2	14
Educational attainment - persons 25 years and over - percent bachelor's degree or higher 2000	22.4	24.4	13
Income/Poverty			
Per capita income in 1999	18,112	17,151	6
Median household income 2004	39,885	35,574	7
People of all ages in poverty - percent 2004	12	14	34
Personal Income (NAICS) 2005	2,493	27,122	4
Per capita personal income (NAICS) 2005	30,008	29,015	11
Federal			
Federal Government expenditure - total FY 2004	447,681	7,493,567	5
Federal Government expenditure per capita FY 2004	5,512	8,085	51
Housing			
Housing unit estimates as of July 1, 2006	37,311	432,023	3
Housing unit estimates - net change, April 1, 2000 (base) to July 1, 2006	2,538	19,390	4
Housing unit estimates - percent change, April 1, 2000 (base) to July 1, 2006	7.3	4.7	3
Owner-occupied housing units - percent of total occupied housing units 2000 (complete count)	73.3	69.1	29
Median value of specified owner-occupied housing units 2000 (sample)	125,600	99,500	5
Housing units by units in structure - multiple units 2000 (sample)	12.5	15.70	17
New private housing units authorized by building permits - total 2006 (20,000-place universe)	539	4,542	3
Valuation of new private housing units authorized by building permits 2006	113,387	723,109	2
Employment/Business			
Civilian labor force 2006	43,700	493,842	4
Civilian labor force unemployment 2006	1,560	15,680	3
Civilian labor force unemployment rate 2006	3.6	3.2	18
Employment in all industries (NAICS) 2005	57,538	613,425	4
Employment in all industries (NAICS), net change 2000 (SIC)- 2005	8,260	54,370	3
Employment in government and government enterprises (NAICS) 2005	4,909	92,756	6
Earnings in all industries (NAICS, no code) 2005	1,804,466	19,787,993	4
Earnings in all industries (NAICS, no code), average earnings per job 2005	31,361	32,258	15
Average travel time to work for workers 16 years and over not working at home 2000	19.0	17.7	21
Private nonfarm establishments 2005	4,041	35,736	4
Private nonfarm employment for pay period including March 12, 2005	32,574	326,887	4
Private nonfarm employment for pay period including March 12, 2005, percent change 2000-2005	15.8	10.40	9
Nonemployer: total (NAICS 00) establishments, 2005	9,521	80,851	3
Accommodation and Food Services: total (NAICS 72) - sales of establishments with payroll 2002	159,629	1,537,986	4
Total number of firms 2002	11,341	100,402	3
Manufacturing: total (NAICS 31-33) - value of shipments 2002	645,595	4,987,577	2
Wholesale trade: total (NAICS 42) - sales of establishments with payroll 2002	488,523	7,223,420	3
Retail trade: total (NAICS 44-45) - sales of establishments with payroll 2002	1,025,123	10,122,625	4
Retail trade: total (NAICS 44-45) - sales of establishments with payroll per capita 2002	13,232	11,116	4
Land in farms (NAICS) 2002(acres)(not adjusted)	234,861	59,612,403	52

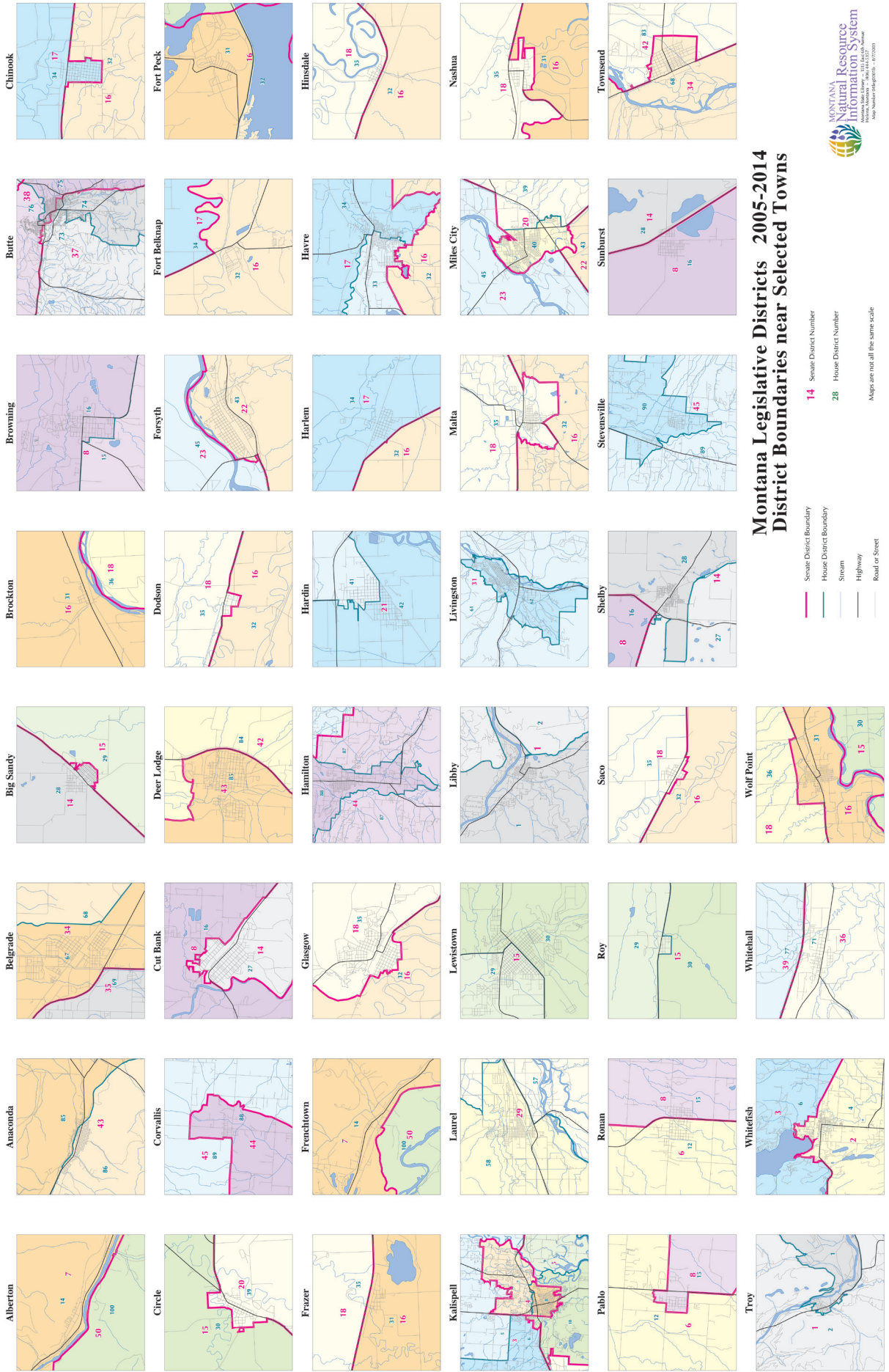
Source: U.S. Census Bureau

Montana Legislative Districts 2005-2014

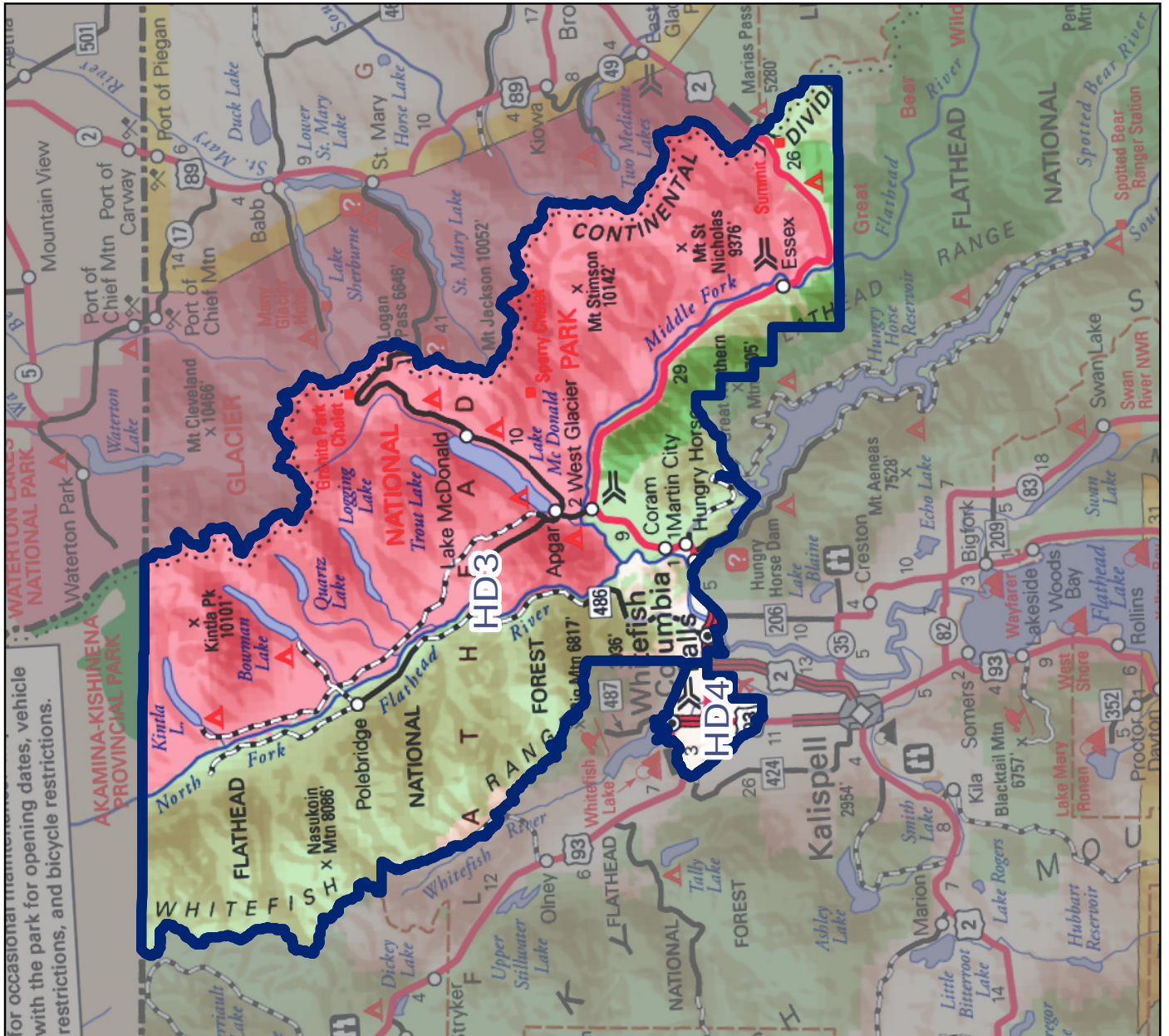
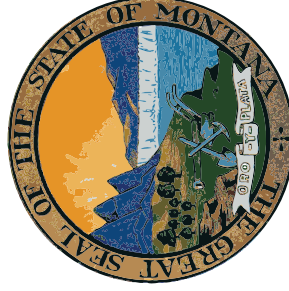
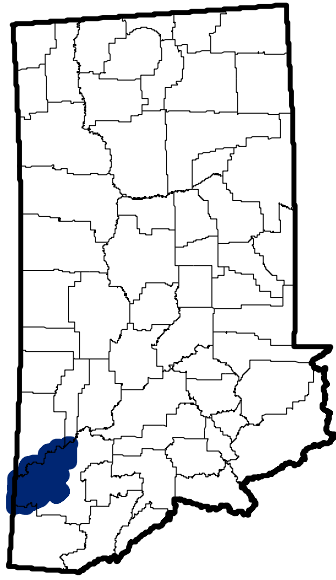


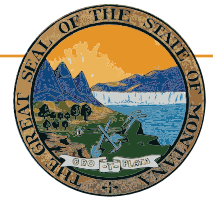
Each Senate District is outlined and labeled in pink. The two House Districts that form the Senate District are outlined in blue and labeled in blue.





Montana Senate District 2





Montana State Library

1515 East 6th Avenue
PO Box 201800
Helena, MT 59620
(406) 444-3115

<http://msl.mt.gov>

Statewide Library Resources

- 5,000+ Online Magazines
- Ask Montana
- **Montana Shared Catalog**
 - 91 participating libraries
 - 2.3 million items
- **Montana Library Directory**

<http://mymontanalibrary.org>

<http://askmontana.org>

http://msl.mt.gov/For_Librarians/Library_Directory

Montana State Digital Library

- **Library Information Services**
 - Electronic Reference Materials
 - Online Magazines & Journals
 - Montana State Library catalog
 - Research Databases
 - Digital State Publications
- **Natural Resource Information System**
 - Maps and Geographic Information
 - Montana Digital Atlas/Map Gallery
 - Online maps & databases
 - Water Information
 - Montana GIS Portal
- **Natural Heritage Program**
 - Montana Field Guide
 - Animal, plant, and habitat information
 - Natural Heritage Tracker

http://msl.mt.gov/for_state_employees/journals.asp

<http://msl.mt.gov/msc>

http://msl.mt.gov/For_State_Employees/Find_Databases

http://msl.mt.gov/for_state_employees/State_Publications

<http://nris.mt.gov>

<http://nris.mt.gov/gis>

<http://nris.mt.gov/interactive.html>

<http://nris.mt.gov/wis>

<http://gisportal.mt.gov/Portal/>

<http://mtnhp.org/>

<http://fieldguide.mt.gov/>

<http://mtnhp.org/Tracker>

Montana Talking Book Library

- 60,000+ titles circulated to 3,000+ patrons
- State of the art digital recording booth: 800+ Montana recorded books
- On-line catalogs and services – WebOpac WebBraille
- Descriptive video collection and newspaper services
- Braille Books: TwinVision and embossed

http://msl.mt.gov/talking_book_library

<http://www.klasweb.msl.mt.gov>

Montana State Library In-House Partners

- **Montana Fish, Wildlife & Parks**
- **Natural Resources Conservation Service**

<http://fwp.mt.gov>

<http://www.mt.nrcs.usda.gov/>

Legislative Snapshot

- This booklet is available online with live links and will be updated regularly as new data becomes available.

http://msl.mt.gov/legislative_snapshot/