

Legislative Snapshot 2009

Includes information for the State of Montana,
Senate District 18, and House Districts 35 and 36.

http://msl.mt.gov/legislative_snapshot/



Senate District 18

Senator John Brenden (R)

PO Box 970

Scobey, MT 59263-0970



House District 35

Representative Wayne Stahl (R)

PO Box 345

Saco, MT 59261-0345

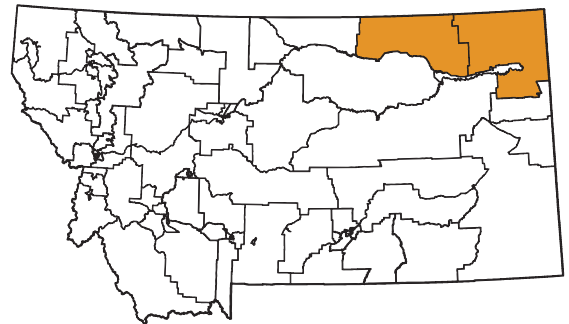


House District 36

Representative Julie French (D)

PO Box 356

Scobey, MT 59263-0356



Letter from the Montana State Librarian

On behalf of the Montana State Library, I would like to welcome you to the 2009 legislative session. Our information experts have compiled this booklet to be a resource to you as you take on the important work of representing the collective needs of all Montanans and the special needs of your district during this legislative session.

As in past editions, we have included a wide range of information that, after reviewing proposed bills and following national and state trends through various mediums, we believe will likely be major themes in this legislative session. To that end, you will find up-to-the-minute information on our state's economy, energy production and development, and land and water use. Education is always an important issue, and you will find relevant information on our state's public schools and test scores, as well as on the libraries that help to augment what our schools do. Fire and drought have continued to ravage certain parts of Montana, and you will be able to take a look at the most current information available on maps created here at the State Library. Finally, wildlife and recreation will always be an important part of Montana life, and we've pulled several highlights from our collection that might help to guide your decision-making this session.

The Montana State Library is a small and very unique agency. We employ not only librarians, but GIS specialists and cartographers and partner with botanists and zoologists, as well as federal and state agencies. We manage an enormous collection of state publications, as we simultaneously work to ensure that Montana's blind and physically disabled have access to reading materials and information.

We created this book for you to demonstrate the power of what a diverse staff with amazingly diverse skills can do to make information in many different forms available to every Montanan. We are very proud of what we do here at the State Library as we work to empower Montanans by providing access to information, enhancing learning in families and communities, and building 21st Century skills.

We hope that you use this book throughout the session and stop by to see us – in person or virtually. Whether you visit us at our facility or online, you will be able to browse our collection of government information, get help researching a specific issue, or find a quiet place to work or meet with colleagues. We are located one block east of the Capitol, behind the Historical Society, at the north end of the Justice building. And of course, our services are available 24 hours a day, seven days a week at <http://msl.mt.gov>.

Sincerely,



Darlene Staffeldt
Montana State Librarian



Senate District 18 House District 35 House District 36

Table of Contents

- 2 Recent Performance of the Montana Economy and its Industries
- 6 Montana Notable Rankings
- 7 Demographics
- 8 Education
- 9 Libraries
- 11 Land
- 12 Water
- 13 Fire and Drought
- 14 Energy, Mines
- 15 Wildlife and Recreation

Appendices

- i Library Directory
- iv State of Montana Index

Senate District 18 County Indexes

- v Daniels County
- vi Phillips County
- vii Richland County
- viii Roosevelt County
- ix Sheridan County
- x Valley County

Maps

- xi Legislative Districts
- xiii Senate District 18

Recent Performance of the Montana Economy and its Industries

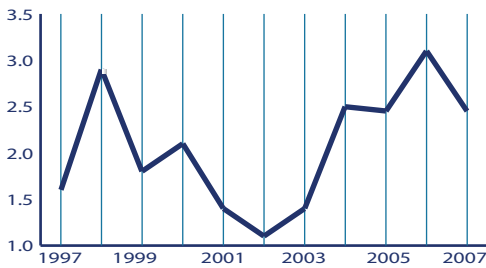
Source: Montana Department of Labor, Research and Analysis Bureau

Montana has been outperforming the nation in terms of employment growth, wage growth, and unemployment since 2001. Montana's unemployment rate fell below the national rate in 2001 and has remained lower ever since. Montana's annual unemployment rate in 2007 was the 8th lowest in the nation.

Montana's economy has also outperformed the nation in terms of employment growth. Over the 1997-2007 time period, employment in Montana grew at an annual compounding growth rate of 2.1% compared to a national rate of only 1.1%. Job growth in Montana has been speeding up in recent years. Employment grew at a compounding rate of 2.4% annually over 2002-2007, then at a compounding rate of 2.8% annually from 2005-2007.



Montana Change in Total Employment



Source: Quarterly Census of Employment and Wages (QCEW) Program

Average wages in Montana have also been on the rise, outpacing both inflation and the national average since 2005. Increasing real wages are good news for workers and businesses alike. Workers can increase their standard of living, while businesses benefit because workers have more money to buy goods and services.

There is not one particular industry that was responsible for the recent economic growth in Montana – all industries have been experiencing growth. The following paragraphs examine the performance of Montana's industries in recent years using the Bureau of Economic Analysis (BEA) data for state Gross Domestic Product (GDP), employment, and personal income earnings from work. The BEA data includes an estimate of

employment and earnings for business owners in addition to payroll workers.

Government, which includes federal, state, and local government and school districts, is an important part of the Montana economy. Government is the largest employer in the state, totaling 14.6% of the jobs in the state. Government constitutes 15.6% of the state's GDP and provides 22% of the state's personal income earned from work. While the GDP and personal income attributed to government work has grown at about 5.5% per year since 2004, employment in this industry has not increased. Government employment has a 0% growth rate since 2004.

As for private industry, the Montana economy can be divided into three categories based on their roles in the economy: base industries, consumer-based industries, and business-support industries. Base industries bring new money into Montana

through exports and can drive growth in other industries through this increase in wealth. In Montana, the base industries are generally natural-resource-based and include agriculture, wood products, manufacturing, energy, and the mining of metals, oil and gas, coal, and other substances. Tourism is also partially a base industry to the extent that it brings new money into Montana, although many of the state's tourists come from within the state. Although employment in base industries is not large, base industries usually pay higher wages than other industries,

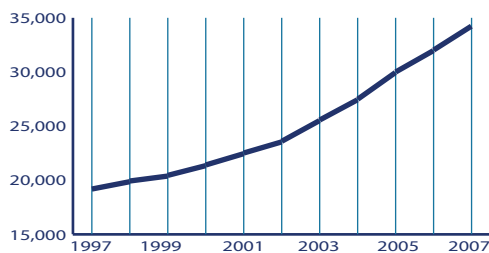
2007 Montana Annual Employment Averages

	Units		Employed	
	Count	Change from 2006	Count	Change from 2006
Total All Industries	42,386	3.4	436,695	2.5
Total Private	40,177	3.4	356,765	3.0
Agriculture, Forestry, Fishing & Hunting	950	1.2	4,532	2.3
Mining	410	8.2	7,474	2.4
Utilities	233	0.9	3,045	2.6
Construction	6,359	5.7	32,286	7.0
Manufacturing	1,381	0.7	20,437	1.3
Wholesale Trade	2,286	3.0	16,938	2.5
Retail Trade	4,816	1.3	58,388	4.0
Transportation And Warehousing	1,304	4.3	11,017	2.1
Information	783	1.8	7,621	-1.5
Finance And Insurance	2,059	6.4	15,556	-2.5
Real Estate And Rental And Leasing	1,823	5.1	6,027	-0.4
Professional And Technical Services	4,097	3.9	19,004	2.3
Management Of Companies And Enterprises	113	18.9	1,438	17.7
Administrative And Waste Services	2,001	5.9	20,264	11.3
Educational Services	398	5.9	4,080	-0.4
Health Care And Social Assistance	3,171	4.5	54,270	2.2
Arts, Entertainment, And Recreation	1,225	4.2	11,425	5.6
Accommodation And Food Services	3,276	-0.8	46,738	1.7
Other Services	3,310	1.0	15,980	0.9
Total Government	2,210	3.8	79,931	0.0

Source: Department of Labor and Industry, Research and Analysis Bureau

making these jobs contribute more to personal income and GDP growth than other jobs. The industries of farming, forestry, mining, utilities, and manufacturing made up 11.8% of the employment in Montana, but 13.3% of personal income and 17.1% of the state's GDP in 2006.

Montana Historical Gross Domestic Product (GDP)
(millions of current dollars)



Source: U.S. Department of Commerce, Bureau of Economic Analysis

Of these base industries, mining has been the fastest growing industry for GDP in Montana in recent years, largely because of increased prices for metals, oil, gas, and energy. Mining represents 6.8% of the state's GDP, but has a growth rate of 24% over the 2005 to 2007 period. Mining employs 1.4% of workers in Montana, and has a growth rate for employment of 7% from 2004 to 2006.

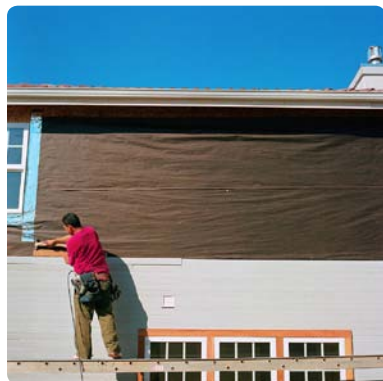
While the natural-resource-based industries have traditionally been the driver of the Montana economy, consumer- and service-based industries are becoming increasingly important, particularly in the fast-growing Western portion of Montana. Consumer-based industries are industries where growth depends on an increase in population or income, such as construction, retail, health care, or entertainment. Continued growth in these industries relies on continued population and wage growth.

Consumer-based industries tend to be large employers, but usually pay lower wages because of a predominance of lower-skilled jobs. For example, retail trade is the largest private industry in Montana for employment, employing over 75,000 workers. However, many of the jobs in the retail industries are low-skilled and low-wage. The consumer-based industries of real estate, construction, health care, education, retail, accommodation, services,

and entertainment comprise 52.7% of the employment in Montana, and produce 41.4% of the state's GDP and 40.6% of the personal income from work earnings in 2006.

In recent years, real estate and construction have played large roles in the growth of Montana's economy. Real estate is the largest private industry in the production of state GDP, representing 10.7% of the state's GDP. The real estate industry has experienced a GDP growth rate of 4.8% over the last two years – slower than the industry average. Construction was the fastest growing employer, adding 10.3% of jobs from 2004-2006 and comprising 8.5% of Montana's jobs in 2006. However, these two industries have been impacted by the national slowdown in housing and will likely experience slower growth in the upcoming years.

The health care industry continues to grow in importance in the Montana economy. After government and retail trade, health care is the third largest industry in terms of employment, with 10.1% of Montana's workers within the industry. Health care provides 11.9% of the state's earnings from work and 8.9% of the state's GDP.



Montana Employment Projections Top 20 Fastest Growing Industries

	Industry	2006	2016	Change	% Change	Growth Rate %
	Total, All Industries	523,362	621,092	97,730	18.7	1.7
1	Total Self-Employed and Unpaid Family Workers	95,014	104,375	9,361	9.9	0.9
2	Self-employed workers, primary job	94,516	103,929	9,413	10	1
3	Education and Health Services	94,512	112,973	18,461	19.5	1.8
4	Trade, Transportation and Utilities	89,848	105,889	16,041	17.9	1.7
5	Goods-Producing Domain	64,295	78,564	14,269	22.2	2
6	Leisure and Hospitality	57,267	70,306	13,039	22.8	2.1
7	Retail Trade	56,234	67,011	10,777	19.2	1.8
8	Health Care and Social Assistance	55,986	68,858	12,872	23	2.1
9	Accommodation and Food Services	45,976	55,220	9,244	20.1	1.8
10	Educational Services	38,526	44,115	5,589	14.5	1.4
11	Professional and Business Services	38,246	52,874	14,628	38.2	3.3
12	Public Administration	37,609	40,759	3,150	8.4	0.8
13	Total, All Government	37,609	40,759	3,150	8.4	0.8
14	Food Services and Drinking Places	35,331	41,979	6,648	18.8	1.7
15	Construction	32,392	42,888	10,496	32.4	2.8
16	Financial Activities	22,413	26,741	4,328	19.3	1.8
17	Hospitals	21,939	25,976	4,037	18.4	1.7
18	Manufacturing	20,171	21,063	892	4.4	0.4
19	Professional and Technical Services	18,795	25,007	6,212	33.1	2.9
20	Administrative and Waste Services	18,229	26,044	7,815	42.9	3.6

Source: Department of Labor and Industry, Research and Analysis Bureau

Finally, the third industry category is business support industries, which require a nexus of economic activity to prosper. Business support industries, such as transportation and warehousing, wholesale, management of companies, administrative and waste services, depend on the growth of other industries. Continuing either amenity-driven population growth or economic growth will allow business support industries to prosper. Business support industries comprise 20.8% of Montana's employment, 25.5% of the state's GDP, and 24.2% of personal income from work earnings.

With the recent economic growth, business support industries are some of the fastest growing in the state. The GDP produced by the state's management of companies industry grew at the second fastest rate during 2005-2007 (20.6% annually), followed by administration and waste services with the third fastest growth (15.9% annually). These industries remain small and together comprise only 2.6% of the state's GDP.

In summary, the Montana economy remains fairly reliant on traditional natural-

resource-based industries, particularly mining, to bring in new money into the state. In recent years, consumer-based and service industries have been increasingly important, and now represent the majority of the state's employment. These consumer-based industries rely on amenity-driven population growth and wage growth for continued prosperity. Finally, the business support industries depend on a nexus of population and industry, and have prospered in the rapid economic growth in recent years. All of these industries are interconnected and rely on each other for success.

Challenges to the Montana Economy

National Economic Concerns

During 2006 and 2007, the Montana economy experienced above-average growth in both employment and wages. Using the Quarterly Census of Employment and Wages, payroll employment grew at a rate of 2.5% from 2006 to 2007, with wages growing at a rate of 5.3%.

Following this rapid expansion, a national economic slowdown has impacted the Montana economy during 2008. Montana job growth has been low since the start of 2008, particularly when compared to the rapid growth in previous years. The unemployment rate has increased over one percent since the start of the year. The wood products industry, an important base industry in the Northwestern portion of Montana, has felt the worst impacts. Construction and financial services have also experienced slowdowns, particularly in comparison to the rapid growth in these industries in previous years.

Montana, however, has not been affected by the national slowdown as much as other states. Using unadjusted data on payroll jobs through the first half of 2008, Montana is ranked the third fastest growing state in the U.S. with 5.9% growth in payroll jobs. Alaska and Wyoming are first and second, which indicates that agriculture and oil and gas industries are likely playing a stabilizing role in the economies of these two states and in Montana. High commodity prices for agricultural and energy products encourage growth in

these industries and also help employment in other industries through spillover effects.

Due to more responsible lending and borrowing practices and a strong economy, Montana home prices have remained fairly stable in comparison to other states. According to the Office of Federal Housing Enterprise Oversight, Montana home prices



have risen 3.38% over the year ending June 30, 2008. This increase makes Montana the 8th highest state in the nation for home price increases in the last year. Joining Montana on the top ten list are Wyoming, South Dakota, and North Dakota, whose economies have also been fairly stable in comparison to the rest of the nation.

Regionally, Montana's economic performance is similar to our neighbors, with all of Montana's surrounding states experiencing unemployment increases during 2008. Idaho has experienced the greatest change in its unemployment rate during 2008, followed by Montana and Wyoming, then by the Dakotas. The impact of the national recession is greatest in areas like Idaho and Northwestern Montana that are heavily reliant on the wood products industry, with diminishing effects in agricultural and energy-producing areas.

Aging Workforce

A longer-term challenge for the Montana economy is our aging workforce. According to the U.S. Census Bureau's population projections, the percentage of the Montana population that will be over the age of 65 is expected to reach 25% by 2030, making Montana one of the oldest states in the nation. The aging of our population will likely have obvious impacts on our economy, such as increased demand for health care, greater demand for the arts, and changes in state spending for both education and Medicare.

The aging of the population will also cause significant tightening of Montana's labor force. Again using the U.S. Census Bureau's population projections, the working age population in Montana (ages 18-65) will start to decrease starting in 2014. Without changes to the traditional workplace, Montana businesses may start to experience difficulty finding appropriately trained workers. To meet future job demands, businesses will need to start looking for workers in populations that traditionally have lower workforce participation, such as older workers, women with children, minorities, or non-high school completers. To recruit these workers, businesses will likely need to offer more flexible hours, worker training, or a different mix of benefits than what is traditionally provided. The aging of the Montana population will likely drive changes in Montana's education system as well. There will be fewer young people graduating from Montana high schools and more non-traditional students in the Montana University System. The tightening labor force will likely also increase demand for short-term training programs that allow workers to quickly update their skills for emerging technologies. For example, an

Census 2000 Age and Sex by District

	Montana	Senate District 18	House District 35	House District 36
Total Population	902,195	18,653	9,431	9,222
Percent of Population, Under 18 Years	25.5	24.4	24.9	23.8
Percent of Population, 18 to 24 Years	9.5	5.4	5.8	5.0
Percent of Population, 25 to 44 Years	27.2	23.1	24.1	22.2
Percent of Population, 45 to 64 Years	24.4	26.1	25.0	27.2
Percent of Population, 65 Years and Over	13.4	21.0	20.1	21.9
Median Age (Years)	37.5	43.3	42.0	44.5

Source: U.S. Census Bureau

electrician may need a general background, but will also need short-term training to refine his skills in order to build a wind turbine. Businesses may feel the need to take greater responsibility for job training in order to meet their labor demands, but will likely rely on the state education system to provide standards and certifications.

Regional Imbalance

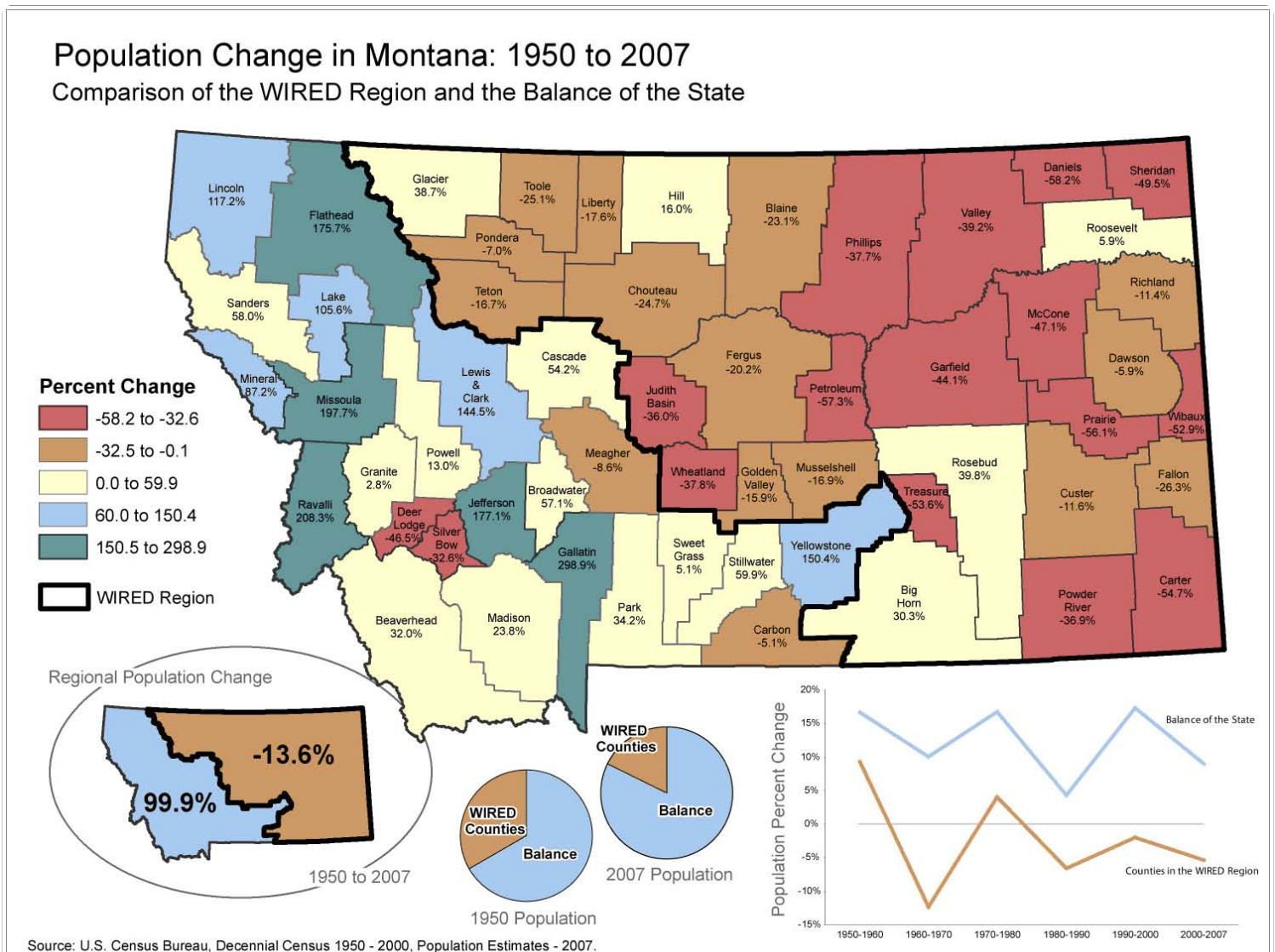
Finally, Montana's economy continues to have regional disparities in prosperity and population growth. Montana remains a fairly rural state, with a population density of 6.5 people per square mile compared to 84.5 people per square mile for the nation (U.S. Census Bureau). In recent years, the population growth in Montana has accelerated, but this population growth

is largely limited to the urban centers and the western portion of Montana. The following map, produced by the Census and Economic Information Center at the Montana Department of Commerce, compares the population change since 1950 in Montana's Workforce Innovation in Regional Economic Development (WIRED) region compared to the balance of the state. The WIRED region is a labor force area designated by the U.S. Department of Labor to receive funding to integrate economic and workforce development. The WIRED region is used here because it includes 32 counties and six Indian Reservations in Eastern and North Central Montana that have been experiencing long-term population and economic declines. Since 1950, the WIRED region has lost 13.6% of

its population; in comparison, the balance of Montana has experienced a population increase of 99.9%. As shown in the graphic below, the population declines are greater in the counties that are further east.

The pattern of population growth (and also economic growth) has also been termed 'the cowboy boot' economy by Governor Brian Schweitzer. Governor Schweitzer's boot economy includes the fast-growing counties of Flathead, Lake, Missoula, Lewis and Clark, Jefferson, Gallatin, and Yellowstone, but also roughly follows the pattern of the WIRED and non-wired counties.

The disparity in population growth between the eastern and western



September 2008 - WIREDPopChange.mxd

portions of the state (or urban or rural, or cowboy-boot or non-boot) has resulted in economic disparities as well. Employment growth in recent years in the nation and in Montana has been driven by consumer-based industries that rely on population increases for economic growth. For example, consumer-based industries in Montana added almost 28,000 jobs to the Montana economy during the 2002 to 2007 period, while natural resource industries only added 3,200 jobs.

The lack of consumer-driven industries in the eastern portion of the state has resulted in slow employment growth. Over the 1990-2007 period, the annual compounding rate of job growth in the WIRED region of Eastern and North Central Montana was -0.3% compared to positive growth of 1.8% in the non-WIRED Western and urban counties. The regional disparity also is evident in wages. The average wage

per job in the WIRED region in 2007 was \$29,200, while the average wage across the full state was \$32,200. However, the rapid growth in the energy industry has provided hope to reverse these fortunes in the eastern portion of the state in recent years. In fact, wages in the WIRED region have grown at a faster rate than wages in Montana as a whole during the 2000-2007 time period (a compounding annual growth rate of 4.6% compared to 4.1%), despite having slower job growth in the WIRED region, likely due to the addition of high-paying energy jobs.

In summary, Montana has large disparity in the economic performance in various areas of the state. The urban centers have experienced strong economic growth, but the rural areas still lag behind in wages and employment. Montana likely will continue to face challenges related to the uneven economic prosperity across the state.



Montana Notable Rankings

	US	Montana	Rank in US
Median age, 2006	36.4	39.2	7
Unemployment rate, April 2008	4.6	3.8	14
Percentage change in home prices, 2005 - 2006	5.59	10.2	8
Percentage of grandparents responsible for their grandchildren	40.5	46.5	22
Percentage of households with one or more people 65 years and over, 2006	23.2	24.4	11
Percentage of children under 6 years old with all parents in the labor force, 2006	61.6	62.0	31
Percentage of people 25 years and over who have completed high school (includes equivalency), 2006	84.1	90.1	4
Percentage of people 16 to 64 years who are in the labor force (including Armed Forces), 2006	74.5	76.0	23
Median monthly housing costs for renter-occupied housing units (dollars), 2006	763	571	46
Percent of housing units that were built in 1939 or earlier, 2006	14.6	18.0	22
Median earnings for full-time, year-round workers (in 2006 inflation-adjusted dollars), 2006	32,649	26,007	49
Median earnings for full-time, year-round workers (in 2006 inflation-adjusted dollars), 2006	42,210	36,378	48
Percentage of civilian population 18 years and over who are veterans, 2006	10.4	14.2	2



- 2.8% of Montanans walk to work, well above the national average.
- Montana ranked 2nd for the percentage of state parks, recreation areas, and natural areas.
- 14% of Montana's civilian population are veterans, placing Montana second in the nation.
- Montana ranked 4th for the percentage of the population 25 and older who graduated from high school.
- Montana has the 4th lowest average travel time to work of any US state.
- Montana ranks 7th in electricity generated from renewable resources.
- Montana residential customers have the 7th lowest electric bill.

Demographics

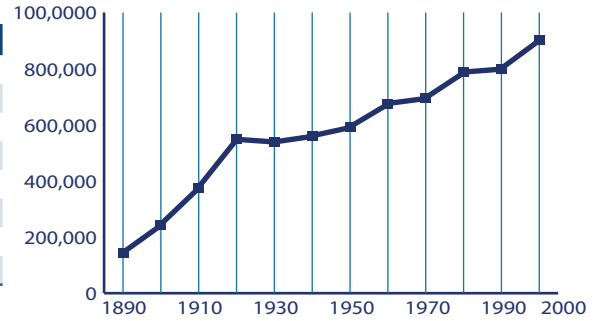
Population Growth in Montana and Selected Counties

Montana's population density is about 6.3 persons per square mile.

	2000 Census	2007 Estimate	Percent Growth
United States	281,421,906	301,621,157	.07
Montana	902,195	957,861	.06
Daniels County	2,017	1,650	-18.20
Phillips County	4,601	3,948	-14.19
Richland County	9,667	9,182	-5.02
Roosevelt County	10,620	10,148	-4.44
Sheridan County	4,105	3,373	-17.83
Valley County	7,675	6,899	-10.11

Source: U.S. Census Bureau

Montana Historic Population Growth 1890 - 2000 Censes



Source: U.S. Census Bureau Population

Household Income and Poverty Figures for 2005

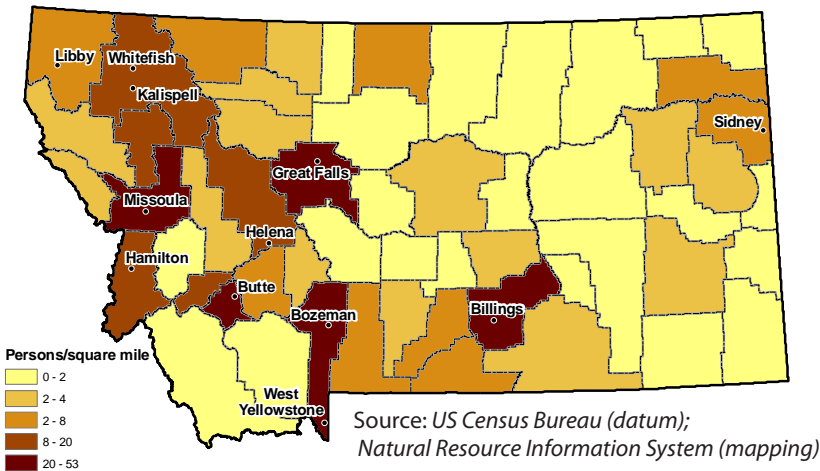
Montana ranked 42nd among all U.S. states for median income in 2005.

	Median Household Income	% in Poverty All Ages	% in Poverty Ages < 18
United States	46,242	13.3	18.5
Montana	38,503	14.6	20.2
Daniels County	30,578	12.9	17.4
Phillips County	32,309	17.7	24.5
Richland County	36,489	13.7	17.3
Roosevelt County	27,419	31.5	43.7
Sheridan County	32,381	13.3	18.7
Valley County	34,202	15.1	22.7

Source: U.S. Census Bureau



2007 Population Density Estimates - Total Persons



2007 Population Estimates

	Montana
Male	479,633
Under 18 years	112,664
18 to 64 years	306,876
18 years and over	346,969
21 years and over	346,707
62 years and over	75,218
65 years and over	60,093
Female	478,228
Under 18 years	106,834
18 to 64 years	297,909
18 years and over	371,394
21 years and over	353,066
62 years and over	88,126
65 years and over	73,485
Total	957,861

Source: US Census Bureau, Population Estimates Program

Housing Units for Selected Counties

According to the U.S. Census Bureau, the total number of housing units in Montana increased 4.7% during this period.

	2000	2001	2002	2003	2004	2005	2006	2007	Percent Change (2000 - 2007)
Daniels County	1,154	1,153	1,152	1,150	1,149	1,146	1,144	1,142	-1.04
Phillips County	2,502	2,502	2,498	2,494	2,490	2,497	2,491	2,484	-0.72
Richland County	4,557	4,561	4,555	4,555	4,559	4,562	4,577	4,583	0.57
Roosevelt County	4,044	4,042	4,035	4,030	4,025	4,037	4,037	4,030	-0.35
Sheridan County	2,167	2,164	2,161	2,156	2,151	2,154	2,148	2,142	-1.15
Valley County	4,847	4,838	4,827	4,817	4,810	4,828	4,818	4,807	-0.83

Source: U.S. Census Bureau

Education

Schools in Senate District 18

There are 828 public K-12 and 14 private accredited schools in Montana. Montana also has 21 public and 3 private colleges. Senate and House district figures in the table below show the number of schools located in cities within 10 miles of the district's boundaries.

	Montana	Senate District 18	House District 35	House District 36
High Schools	171	49	30	29
Middle Schools	213	53	34	33
Elementaries	444	75	49	48
Total	828	113	113	110

Source: Office of Public Instruction Website, November 2009

Montana School Size and Enrollment 2007 - 2008

School Size	Percent of Schools	Enrollment	Percent of Enrollment
>500	6	45,133	31
250 to 499	20	55,441	39
100 to 249	20	26,287	18
50 to 99	15	9,152	6
<50	39	7,392	5
Total	100	143,405	100

Source: Office of Public Instruction, September 2008

School Districts - Percentage of in Area

The following table shows the number of school districts with the appropriate percentages in each area. Ten of the elementary districts and two of the high school districts have 100% of their area contained within the boundaries of Senate District 18.

	Senate District 18		House District 35		House District 36	
	Elementary	High School	Elementary	High School	Elementary	High School
0 to 9.999 %	5	4	4	3	18	6
10 to 29.999 %	1	1	1	1	0	0
30 to 49.999 %	1	1	1	1	1	0
50 to 69.999 %	3	4	3	3	0	1
70 to 89.999 %	6	3	2	1	5	3
90 to 99.999 %	6	14	3	3	7	12
100 %	10	2	0	0	12	1
Total	32	29	14	12	43	23

Source: Montana State Library, June 2004

Education Statistics

The data listed below is taken from the 2000 census. Senate and House districts shown are based on the current geographic boundaries thanks to Montana's cooperation with the U.S. Census Bureau.

	Montana	Senate District 18	House District 35	House District 36
Population 5 years and over, Percent who speak a language other than English at home, Total, 2000	5.2	3.5	3.3	3.6
Population 5 years and over, Percent who speak a language other than English at home, And speak English less than "very well", 2000	1.5	0.7	0.4	1.1
Population enrolled in elementary or high school, Percent in private school, 2000	7.0	3.4	4.9	1.7
Population, 16 to 19 years, Percent not enrolled in school and not a high school graduate, 2000	8.0	1.5	2.2	0.7
Population 18 to 24 years, Percent enrolled in college or graduate school, 2000	33.8	11.6	7.5	15.4
Population 25 years and over, Percent with less than a 9th grade education, 2000	4.3	8.1	7.5	8.6
Population 25 years and over, Percent high school graduate or higher, 2000	87.2	83.5	83.7	83.2
Population 25 years and over, Percent with bachelors degree or higher, 2000	24.4	16.6	16.1	17.0
Population 25 to 34 years, Percent with bachelors degree or higher, 2000	26.6	24.4	25.2	23.5

Source: U.S. Census Bureau

National Assessment of Education (NAEP) Progress Historical Performance in Montana Schools

Subject	Grade	Year	State Average	National Average
Mathematics (scale: 0-500)	4	1996 ⁿ	228	222
		2000	228	224
		2003	236	234
		2005	241	237
		2007	244	239
	8	1990 ⁿ	280	262
		1996 ⁿ	283	271
		2000	285	272
		2003	286	276
		2005	286	278
		2007	287	280
Reading (scale: 0-500)	4	1994 ⁿ	222	212
		1998	225	213
		2002	224	217
		2003	223	216
		2005	225	217
	8	2007	227	220
		1998	271	261
		2002	270	263
		2003	270	261
		2005	269	260
		2007	271	261
Science (scale: 0-300)	4	2000	160	145
		2005	160	149
	8	1996 ⁿ	162	148
		2000	164	148
		2005	162	147
Writing (scale: 0-300)	4	2002	149	153
		1998	150	148
	8	2002	152	152
		2007	157	154

ⁿ Accommodations were not permitted for this assessment

Source: National Center for Education Statistics



Libraries

There are 750 libraries in Montana. Senate and House district figures in the table below show the number of libraries located in cities within 10 miles of the district's boundaries. For more detailed information on Montana's libraries visit http://www.msl.mt.gov/For_Librarians/Library_Directory/.

Source: *Montana State Library, December 2008.*

	Montana	Senate District 18	House District 35	House District 36
Public	80	7	3	4
Branches	29	6	3	3
Bookmobiles	3	0	0	0
School	558	47	22	25
Academic	28	1	0	1
Special or Other	52	0	0	1
Total	750	62	28	34

Montana Public Libraries Fast Facts

- **Montana's public libraries hold 3,286,044 items.**
- Montanans visited their public libraries an average of four times throughout the year, for a total of 3,934,580 visits in 2007.
- Montana library patrons checked out 5,606,250 items in 2007, about 6 items per person.
- Librarians in Montana's public libraries fielded 401,180 reference questions in SFY 2007, or 7,715 questions per week.
- 100% of all Montana libraries provide Internet access to patrons
- **Nearly half of all Montanans (424,188) have a library card.**

Montana Talking Book Library

Montana residents who are unable to use standard print materials due to visual, physical and/or reading disabilities may be eligible to borrow recorded books and playback equipment from the Montana Talking Book Library. Eligibility is determined based on National Library Service Standards. Currently, 3,712 Montanans are registered to use this free service.

*All services are provided **FREE** of charge to eligible patrons!*



Talking Book Library volunteers demonstrate the Twin Vision Braille Program.

Source: *Montana Talking Book Library*

Collection

- 67,000+ fiction and non-fiction audio book titles in all genres for all ages
- 80+ audio, Braille, large print and electronic magazines
- 300+ descriptive videos
- 200+ children's Twin Vision books
- Newsline™ telephone audio newspaper service
- Access to Montana Radio Reading newspaper service

**To apply for these FREE services, contact:
(800)-332-3400 Toll Free in Montana
(406) 444-2064 Helena**

Cooperative Free Book Loan Service

- Access to all audio book titles recorded in over 80 regional and sub-regional libraries of the National Library Service

Local Recording and Twin Vision Braille Programs

- Two studios work constantly to record Montana books, magazines, and many other fiction and non-fiction titles. Over 200 Twin Vision (print and illustrated) children's books have been embossed with Braille text.

Online Services

- WebOpac allows users to search the local recording catalog, order items on line and then have them mailed to their door.
- Through WebBraille patrons can download digital Braille books
- The Digital Download Pilot Project allows patrons to download digital audio books. In 2009 the National Library Service (NLS) will unveil its free digital player for use with this service.

Partnerships

- All Montana Public, Academic and Special libraries
- Other organizations include: ophthalmologists, optometrists, Lions Clubs, Blind and Low Vision and Vocational Rehabilitation Services, Low Vision Montana, Blind Support Groups, Veterans facilities, Montana Independent Living Programs, Montana Association for the Blind, as well as all local and national organizations promoting independence to Montanans with visual, physical, and reading handicaps.

Readers' Advisor and Referral Services

- Trained employees conduct book searches to assist patrons in their reading needs and desires. Research is also done for patrons with special needs and appropriate formats are found and referred to the patron for materials needed.

Senate and House district figures in the table below show the number of patrons located in cities within 10 miles of the district's boundaries.

	Montana	Senate District 18	House District 35	House District 36
Total Patrons	3,076	156	80	97
Veterans Who Are Patrons	258	10	5	6
Patron Count by Disability				
Blindness	945	47	23	31
Low Vision	1,435	73	36	46
Physical	267	13	7	8
Reading	435	23	14	12

Source: *Montana Talking Book Library*

Statewide Library Resources

Statewide Library Resources

Statewide Databases



Subscription databases available to all Montana libraries include the Gale Cengage Learning's suite of periodical databases and Ebsco's Auto and Small Engine Repair, Environment Complete and CINAHL, a resource for nursing students.

OCLC



OCLC, Online Computer Library Center, is a nonprofit, membership, computer library service and research organization dedicated to the public purposes of furthering access to the world's information and reducing information costs.

Ask Montana

A free online service for information and research help provided by librarians in Montana and around the world. Since July of 2004 the service has answered more than 4,300 questions.



<http://askmontana.org/>

MontanaLibrary2Go

This service offers library patrons from participating libraries a substantial, continually growing collection of audio, video and music titles from OverDrive, Inc. Content is available for download to personal playing devices.

HeritageQuest

This subscription genealogy database is accessible by all Montana public library patrons and staff. It provides a collection of unique material for both genealogical and historical researchers, with coverage dating back to the late 1700s.

Montana Memory Project

The Montana Memory Project provides access to digital collections and items relating to Montana's cultural heritage and government.



Source: *Montana Historical Society Photo Archive, Montana Memory Project*

Participating Libraries

Senate and House district figures in the table below show the number of libraries located in cities within 10 miles of the district's boundaries.

	Montana	Senate District 18	House District 35	House District 36
Statewide Databases	750	53	28	34
OCLC	249	15	4	12
Ask Montana	20	2	0	2
MontanaLibrary2Go	21	2	1	2
HeritageQuest	80	6	3	4
Montana Memory Project	12	1	0	1

Source: *Montana State Library*

Statewide Library Training

In order to help Montana libraries provide the highest quality of service to patrons, the Montana State Library offers a certification program and a variety of continuing education and training opportunities for Montana librarians, library staff, and trustees.



Total Attendees (56 online) 1,318
 Number of Workshops (23 online) 113
 Number of different Montana locations 44

Time period: October 2007 through September 2008

Source: *Montana State Library*

Montana Shared Catalog Statistics

The Montana Shared Catalog helps Montana libraries meet today's library users demands. It gives Montanans a rich and easy-to-use catalog including more than 2.3 million items which patrons circulated 2,843,665 times from September 2007 to August 2008. Additional groups that partner to share their catalogs include the 4 Rivers, BridgerNet, and Partners groups. Senate and House district figures below show the number of libraries located in cities within 10 miles of the district's boundaries.

Source: *Montana Shared Catalog*

	Montana	Senate District 18	House District 35	House District 36
Participating Libraries	91	0	0	0
Patrons	271,880	0	0	0
Items	2,304,415	0	0	0
Partner Group Libraries	28	0	0	0



Montana Shared Catalog Senate District 18 Public and Branch Libraries

Roosevelt County Library - *Wolf Point*

Poplar City Library - *Poplar*

Froid Branch Library - *Froid*

Culbertson Public Library - *Culbertson*

School librarian Linda Gardner congratulates the first student to check out a book through the newly activated Montana Shared Catalog system at Alberton School Library.

Land

Land Ownership

Senate District 18 rank number 3 in size and is 11,597.895 square miles, or about 8% of Montana's total land area (146,923.075 square miles). The average senate district in Montana is 2,938 square miles and the average house district is 1,469.

Owner	Montana		Senate District 18		House District 35		House District 36	
	Area (Sq Mi)	%	Area (Sq Mi)	%	Area (Sq Mi)	%	Area (Sq Mi)	%
Private	83,975.739	57.156	7,821.484	67.439	2,888.550	56.363	4,932.934	76.208
Local Government	30.275	0.021	0.093	0.001	0.000	0.000	0.093	0.001
Tribal Land and BIA Trust	8,430.944	5.738	1,361.841	11.742	489.390	9.549	872.451	13.478
Water	1,319.568	0.898	50.526	0.436	12.006	0.234	38.520	0.595
Montana Fish, Wildlife and Parks	467.888	0.318	1.604	0.014	1.092	0.021	0.512	0.008
State Trust Land	8,060.125	5.486	893.700	7.706	374.594	7.309	519.106	8.020
Other State Land	114.762	0.078	0.029	0.000	0.027	0.001	0.002	0.000
US Bureau of Land Management	12,520.011	8.521	1,399.186	12.064	1,337.323	26.094	61.863	0.956
US Fish and Wildlife Service	1,432.092	0.975	53.350	0.460	5.925	0.116	47.425	0.733
US Forest Service	26,403.777	17.971	0.000	0.000	0.000	0.000	0.000	0.000
US National Park Service	1,832.048	1.247	0.063	0.001	0.000	0.000	0.063	0.001
Other Federal Land	369.170	0.251	16.019	0.138	16.019	0.313	0.000	0.000
Plum Creek Timber Lands	1,966.676	1.339	0.000	0.000	0.000	0.000	0.000	0.000
Total	146,923.075		11,597.895		5,124.926		6,472.968	

Source: Montana Natural Heritage Program, August 2008

Private Land Agricultural Use

Owner	Montana		Senate District 18		House District 35		House District 36	
	Acres	%	Acres	%	Acres	%	Acres	%
Continuous Crop	37,496.664	0.065	77.000	0.001	66.000	0.004	11.000	0.000
Fallow Crop	12,743,190.043	22.240	2,592,074.863	50.431	764,026.850	41.310	1,828,048.013	55.558
Farmstead	54,950.000	0.096	2,600.000	0.051	845.000	0.046	1,755.000	0.053
Grazing	37,017,002.816	64.604	2,473,680.934	48.128	1,044,311.310	56.465	1,429,369.624	43.441
Irrigated	1,641,330.911	2.865	43,149.152	0.840	32,509.663	1.758	10,639.489	0.323
Timber	5,006,817.111	8.738	0.000	0.000	0.000	0.000	0.000	0.000
Wild Hay	797,870.640	1.392	28,259.100	0.550	7,725.223	0.418	20,533.877	0.624
Total	57,298,658.19		5,139,841.05		1,849,484.05		3,290,357.00	

Source: Montana Department of Administration Information Technology Services Division

Conservation Easements (Acres)

	Montana	Senate District 18	House District 35	House District 36
Bitter Root Land Trust	690.02	0.00	0.00	0.00
City Government	600.54	0.00	0.00	0.00
Clark Fork- Pend Oreille Conservancy	151.16	0.00	0.00	0.00
County Government	527.62	0.00	0.00	0.00
Ducks Unlimited (Wetlands America Trust)	15,362.12	0.00	0.00	0.00
Five Valleys Land Trust	33,710.48	0.00	0.00	0.00
Flathead Land Trust	6,961.13	0.00	0.00	0.00
Gallatin Valley Land Trust	32,137.65	0.00	0.00	0.00
Montana Department of Transportation	508.49	0.00	0.00	0.00
Montana Fish, Wildlife, and Parks	379,062.50	403.32	403.32	0.00
Montana Land Reliance	779,823.97	0.00	0.00	0.00
National Wildlife Federation	19.65	0.00	0.00	0.00
Prickly Pear Land Trust	985.46	0.00	0.00	0.00
Rattlesnake Land Trust	189.54	0.00	0.00	0.00
Rocky Mountain Elk Foundation	47,466.24	0.00	0.00	0.00
Salish and Kootenai Tribe	102.40	0.00	0.00	0.00
The Bighorn Institute	1,443.39	0.00	0.00	0.00
The Nature Conservancy	279,256.25	1,755.83	0.00	1,755.83
The Vital Ground Foundation	673.83	0.00	0.00	0.00
US Bureau of Reclamation	41.61	0.00	0.00	0.00
US Department of Agriculture	14,281.37	0.00	0.00	0.00
US Fish and Wildlife Service	207,447.07	87,569.88	19,067.96	68,501.92
US Forest Service	8,875.86	0.00	0.00	0.00
Total	1,810,318.34	89,729.02	19,471.28	70,257.74

Source: Montana Natural Heritage Program

Montana GIS Portal

Additional geographic datum and maps are available through the Montana GIS Portal at <http://gisportal.mt.gov/Portal/>. The new portal provides access to more than 400 databases and over 200 sample maps from the collections of the Montana Base Map Service Center, the Montana State Library, Montana Fish, Wildlife and Parks, and Flathead County.



Water Well Development

There are approximately 195,453 water wells in Montana. 55% of Montana's wells were drilled prior to 1990. 24% were drilled in the 1990's and 21% were drilled since the year 2000.

Year	Montana		Senate District 18		House District 35		House District 36	
	Count	Avg Depth (ft)	Count	Avg Depth (ft)	Count	Avg Depth (ft)	Count	Avg Depth (ft)
Pre 1990	106,736	120.66	5,792	113.08	1,977	104.21	3,815	121.94
1990 - 1999	47,608	122.33	1,554	97.50	408	77.52	1,146	117.49
2000 - 2007	41,109	135.18	1,389	96.51	311	98.37	1,078	94.65
Total	195,453	126.05	8,735	102.36	2,696	93.37	6,039	111.36

Source: Montana Bureau of Mines and Geology's Ground Water Information Center (GWIC). This data was drawn from the GWIC database in July 2007.

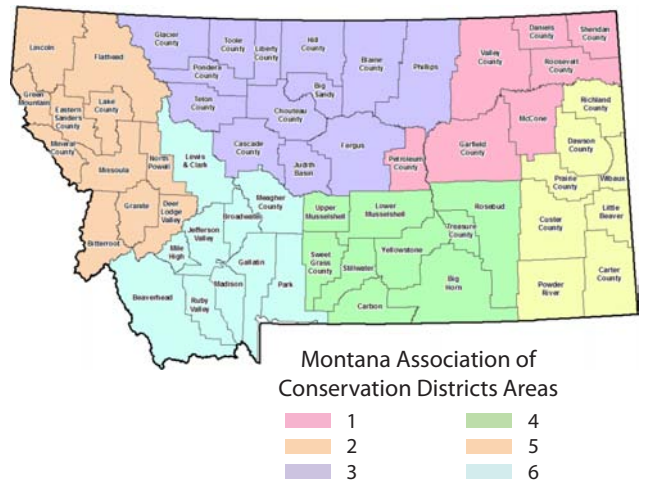
Water Rights

There are 299,021 water rights in Montana. The Department of Natural Resources and Conservation maintains a database of water rights to assist Montana citizens and the Montana Water Court in the water rights adjudication process.

Type	Montana	Senate District 18	House District 35	House District 36
62-73 Ground Water	181	1	0	1
Compact	263	0	0	0
Conservation District	234	35	0	35
Exempt Right	6,248	159	53	106
Ground Water Certificate	76,476	2,337	658	1,679
Inter-State Claim	7	0	0	0
Irrigation District	211	0	0	0
Powder River Declaration	8,015	0	0	0
Provisional Permit	9,113	627	342	285
Reserved Claim	3,558	564	518	46
Statement of Claim	182,211	14,103	8,676	5,427
Stockwater Permit	3,580	744	586	158
Temporary Permit	13	0	0	0
Water Reservation	8,911	300	142	158
Total	299,021	18,870	10,975	7,895

Source: Montana Department of Natural Resources and Conservation, Natural Resource Information System, September 2008.

Montana Conservation Districts



Source: Natural Resource Information System, Department of Natural Resources and Conservation, January 2008

Public Water Supplies

There are 3,266 public water supplies located in the State of Montana, 82 of which are located in Senate District 18. These figures do not include public water supplies serving Native American nations.

	Count
House District 35	
Public, community	22
Public, non-community, non-transient	3
Public, transient	12
House District 36	
Public, community	29
Public, non-community, non-transient	1
Public, transient	15

Source: Department of Environmental Quality, December 2007



Dams in Senate District 18

There are 3,666 dams in Montana. Predominant uses are stock/farm ponds (48%) and irrigation (22%).

Source: National Inventory of Dams, USGS Geographic Names Information System

Type	Montana	Senate District 18	House District 35	House District 36
Debris Control	1	0	0	0
Fish and Wildlife Pond	1	0	0	0
Flood Control	43	5	2	3
Hydroelectric	26	0	0	0
Irrigation	822	34	20	14
Recreation	54	10	0	10
Stock/Small Farm Pond	1,771	137	50	87
Tailings	8	0	0	0
Water Supply	44	0	0	0
Other	68	7	2	5
Unknown	828	92	62	30
Total	3,666	285	136	149

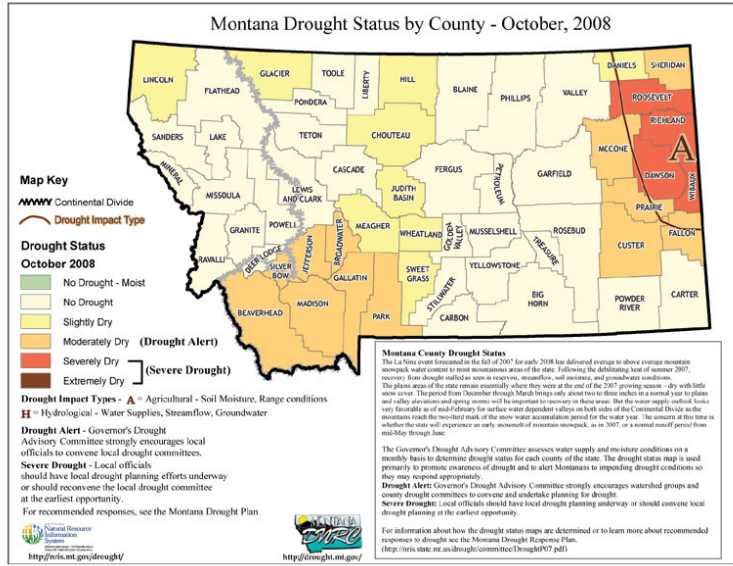
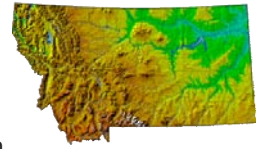
Montana Drought Resources

The Montana Governor's Drought Advisory Committee is charged with monitoring, forecasting, and reporting water supply and moisture conditions, enabling Montanans to make timely and informed decisions to mitigate drought impacts in a proactive manner.

For up to date information and maps on Montana's current drought situation visit <http://drought.mt.gov/default.asp>.

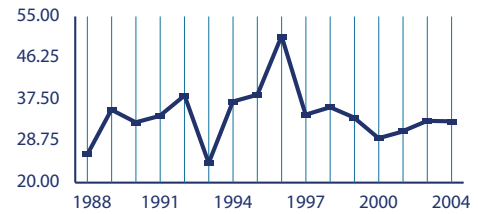
Montana Digital Atlas

Additional mapping and data capabilities are available through the Montana State Library at <http://nris.mt.gov/>. The Montana Digital Atlas provides unlimited access to detailed information on such issues as climate, environmental impacts, land information, water, and cultural data.



Source: Natural Resource Information System

Montana Yearly Average Precipitation (1988 - 2004)



Source: Natural Resources Conservation Service

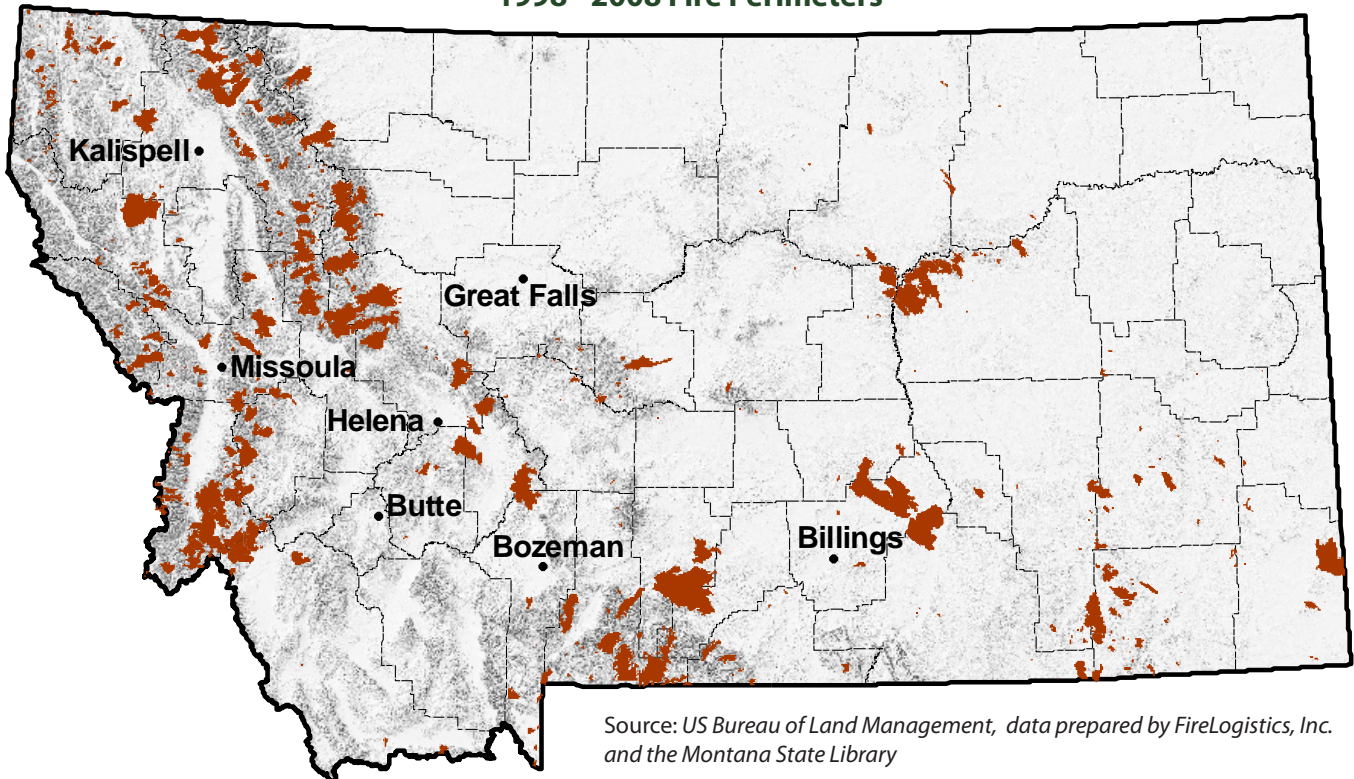
Montana Fires 2002 - 2007

All Fires from All Agencies

Year	Count	Acreage
2002	1,372	110,309
2003	2,326	736,809
2004	1,447	18,445
2005	1,316	103,294
2006	2,302	1,047,118
2007	1,875	778,079

Source: Department of Natural Resources and Conservation

1998 - 2008 Fire Perimeters



Source: US Bureau of Land Management, data prepared by FireLogistics, Inc. and the Montana State Library

Energy, Mines

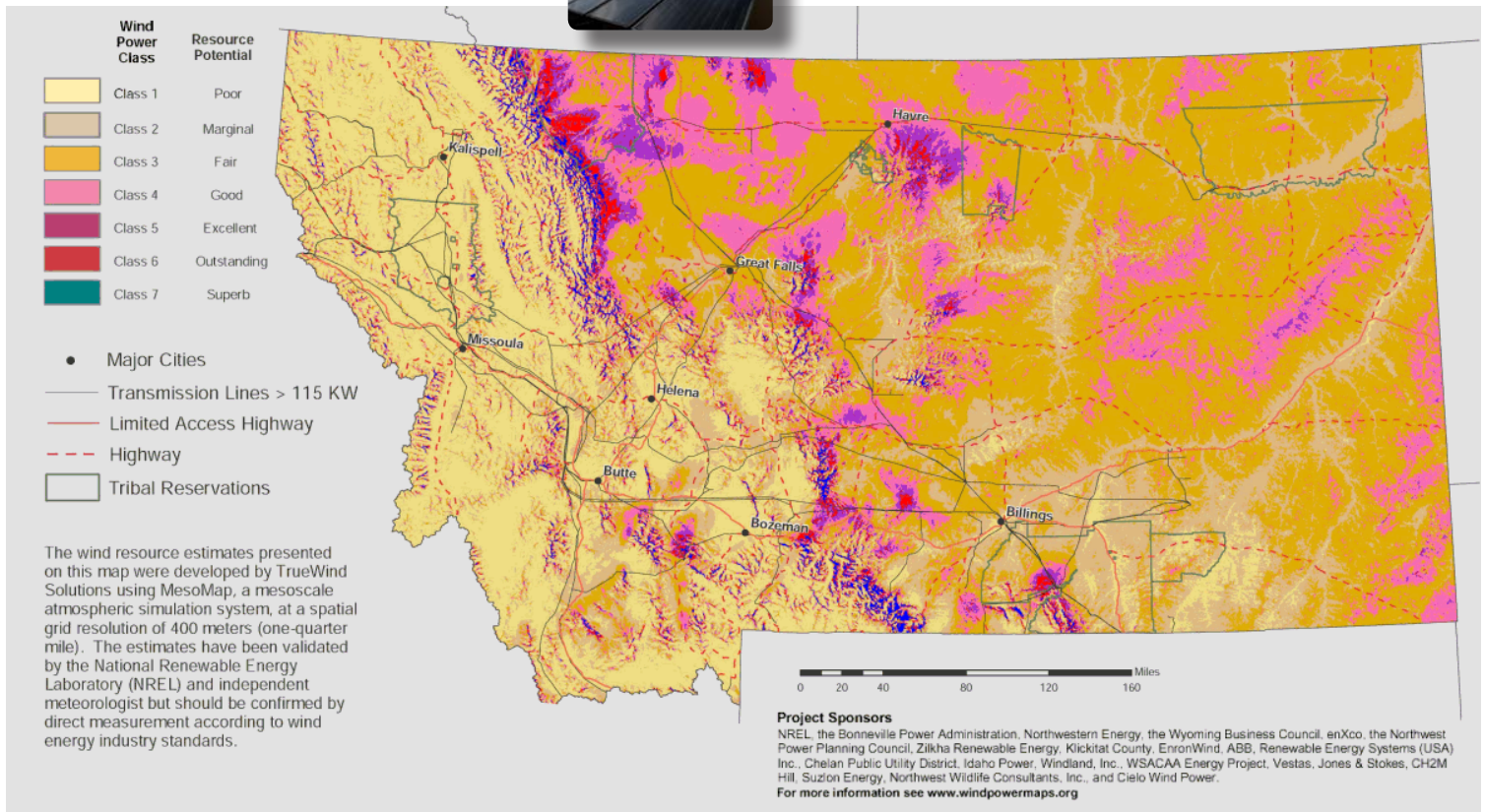
Oil and Gas Wells in Senate District 18

	Montana	Senate District 18	House District 35	House District 36
Coal Bed Methane, Completed	1,042	0	0	0
Coal Bed Methane, Abandoned	36	0	0	0
Coal Bed Methane, Permitted	105	0	0	0
Coal Bed Methane, Under Construction	6	0	0	0
Coal Bed Methane, Water	1	0	0	0
Gas, Completed	6,770	1,547	1,546	1
Gas, Abandoned	2,265	427	410	17
Gas, Permitted	284	55	55	0
Gas, Under Construction	210	19	19	0
Gas, Water	49	3	3	0
Oil, Completed	6,835	1,265	51	1,214
Oil, Abandoned	4,390	516	53	463
Oil, Gas	2	0	0	0
Oil, Permitted	169	57	2	55
Oil, Under Construction	160	75	2	73
Oil, Water	31	2	0	2
Total	22,355	3,966	2,141	1,825

Source: Montana Board of Oil and Gas Conservation, October 2008



Wind Power Distribution



Find additional energy related data and maps at <http://nris.mt.gov/>

Pipelines in Senate District 18

	Montana		Senate District 18		House District 35		House District 36	
	Count	Miles	Count	Miles	Count	Miles	Count	Miles
Crude Oil	90	1,970	4	151	0	0	4	151
Natural Gas	360	3,301	40	335	13	136	27	198
Refined Product	47	805	0	0	0	0	0	0
Other	24	402	1	1	0	0	1	1
Total	521	6,477	45	486	13	136	32	350

Source: Pipeline Integrity Management Mapping Application, December 2006

Abandoned Mines and Remediation Sites

	Abandoned Mines	Remediation Sites
Montana	6,857	656
Senate District 18	522	20
House District 35	50	8
House District 36	472	12

Source: Montana Department of Environmental Quality, 2008

Montana House Heating Fuel

Occupied housing units		100%
Utility gas	215,892	58.0%
Bottled, tank, or LP gas	48,188	13.0%
Electricity	66,054	17.8%
Fuel oil, kerosene, etc.	6,243	1.7%
Coal or coke	701	0.2%
Wood	30,210	8.1%
Solar energy	285	0.1%
Other fuel	4,012	1.1%
No fuel used	369	0.1%

Source: 2007 American Community Survey 1-Year Estimates

Wildlife and Recreation

Montana is blessed with a wealth of wildlife and habitat diversity. These resources provide exceptional opportunities for recreation and contribute substantially to the state's economy and quality of life.

Wildlife Highlights

For more information on other animals, plants, and habitats in your Senate District, visit the Montana Natural Heritage Program at <http://mtnhp.org>.

Resources include:

- Montana Field Guide – an online encyclopedia of Montana's animals and plants;
- Natural Heritage Tracker – powerful mapping tools;
- Land stewardship maps - show public lands, conservation easements, and special designations;
- Access to NatureServe Explorer – with information on species and habitats for all of North America;
- Publications - over 100 survey, species and ecology reports.
- Expert scientists to ensure accuracy of information;
- Quick, friendly responses to data requests and user support.

Great Blue Heron

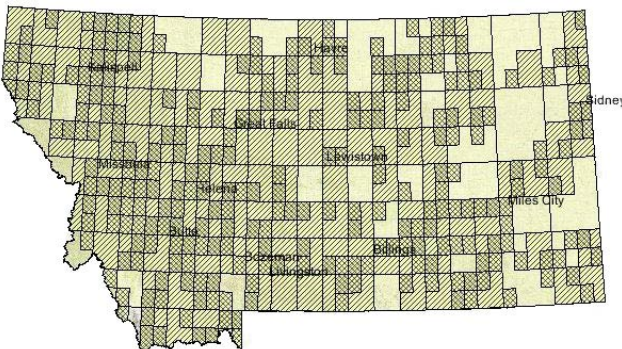
Ardea herodias

Great Blue Herons are the largest heron in North America with a wing span of up to 66 to 79 inches. They breed in colonies or "rookeries," where they build large stick-nests in the treetops.

Source: *Montana Natural Heritage Program, Montana Field Guide*



Great Blue Heron General Observations



Source: *Natural Heritage Tracker (map)*

Montana Animal and Plant Diversity

Mammals	108
Birds	413
Reptiles	18
Fish	85
Amphibians	13
Vascular Plants	2,400

Montana Big Game Population Estimates

Mule Deer	327,931
White-Tailed Deer	237,496
Antelope	220,500
Elk	138,496
Black Bear	15,500
Bighorn Sheep	5,300
Moose	4,800
Mountain Lion	1,800

Montana Recreation Resources

Public lands acres (multiple use)	26,127,212 acres
Rivers and Streams*	177,000 miles
Cold Water Fishery Streams	15,000 miles
Warm Water Fishery Streams	6,100 miles
Lakes*	845,000 acres
Cold Water Fisheries	400,000 acres
Warm Water Fisheries	350,000 acres

Montana Recreation Sites

Montana State Parks	50
Total acres	34,293 acres
National Parks	7
Total acres	1,172,510 acres
FWP Fishing Access Sites	320
Total acres	24,502 acres
FWP Block Management Acreage	8.5 million
Wildlife Viewing Sites	135
Hiking Trails	2,300
Total miles	15,000 miles
Groomed snowmobile trails	4,023 miles

Montana Wildlife Recreation Facts

Percentage of Montanans (age 16 or older)...	
Who Hunted, 2006	19%
Who Fished, 2006	24%
Who Participated in Wildlife-Watching Activities, 2006	50%
Hunting licenses purchased, 2005	188,299
By Montana Residents	144,642
By Non-residents	43,637
Fishing licenses purchased, 2006	390,214
By Montana Residents	230,426
By Non-residents	159,788
Percentage of Montana Population	33%
By Non-residents	159,788
Angler Days Reported by Montana Residents, 2005	2.78 million
Wildlife Viewing by Montana Residents....**	
From Home	389,000
Traveled in the State	510,000
Use of Fishing Access Sites	3.9 million
Personal Watercraft Registered	81,926
Off-Highway Vehicles Registered, 2007	46,707

Montana Economic Impacts of Wildlife Recreation

Spent During Wildlife-Viewing Trips in Montana, 2006**	\$365 million
Spent by Anglers, 2005 (excludes license fees)	\$251.7 million
Hunting-related expenditures	\$302 million

Source: *Montana Natural Heritage Program; Fish, Wildlife and Parks*

* *National Water Quality Inventory: 1998 Report to Congress*

** *2006 National Survey of Fishing, Hunting, and Wildlife and Associated Recreation*

Wildlife and Recreation

Species Diversity in Senate District 18

Senate District 18	
Amphibians	6
Birds	273
Fish	55
Mammals	67
Reptiles	13
Total	414

Source: Montana Natural Heritage Program



Acres of Big Game Winter Range

Big game winter ranges cover a total of 2,893,648 acres or 38.98% of Senate District 18. The table below identifies the number of acres used by individual species even when these areas overlap with other big game animals.

Senate District 18	
Antelope	1,152,879.48
Bighorn Sheep	0.00
Elk	0.00
Mountain Goat	0.00
Mule Deer	2,078,034.98
Moose	0.00
White-tailed Deer	1,098,115.01

Source: Montana Fish, Wildlife and Parks

There are a total of 96 Wildlife Viewing Sites in Montana, two of which are located in Senate District 18.

Recreation Area (Acres)

Senate District 18	
Fishing Access Sites	271.26
State Parks	450.87
Wildlife Conservation Easements	0.00
Wildlife Protection Areas	0.00
Wildlife Management Areas	2,276.63
Total	2,998.75

Source: Montana Fish, Wildlife, & Parks

Wildlife Highlights

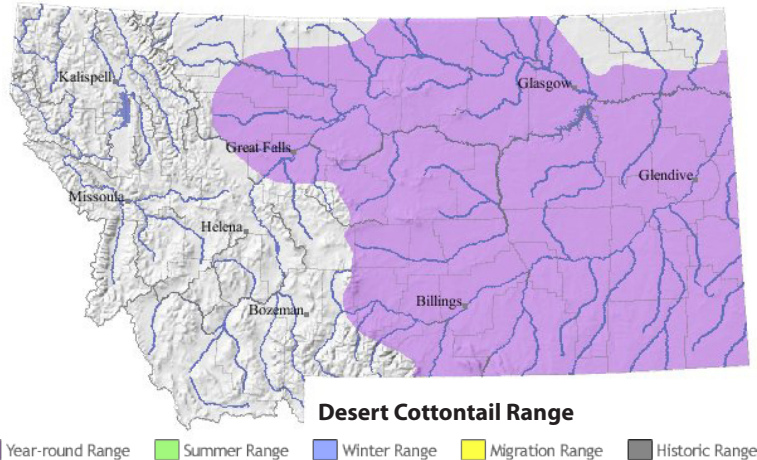
Desert Cottontail

Sylvilagus audubonii

Desert Cottontail rabbits live in arid grasslands and sagebrush areas. Their nests are pear-shaped excavations in the ground and are lined with vegetation and fur.



Source: Montana Natural Heritage Program, Montana Field Guide



Block Management Acreage

There are a total of 7,546,232 acres of Block Management land (excluding Plum Creek*) in the State of Montana. 445,534.68 of those acres or 5.90% are located in Senate District 18.

*Plum Creek land in FWP's Regions 1 and 2 are not included in these statistics. Although they are part of the Block Management Program, they are not traditional BMA's and are managed differently.

Source: Montana Fish, Wildlife & Parks



Fishing and Hunting Licenses by County

	Fishing	Hunting	Total
Daniels County	247	685	932
Phillips County	2,151	3,515	5,666
Richland County	3,470	6,359	9,829
Roosevelt County	1,661	2,781	4,442
Sheridan County	826	2,319	3,145
Valley County	4,236	5,811	10,047

Source: Montana Fish, Wildlife & Parks

Senate District 18 Libraries

Public



Daniels County Library

Marlene Machart, Library Director
Daniels County
PO Box 190 Scobey, MT 59263
(406) 487-5502
OCLC, HeritageQuest, Statewide Databases



Glasgow City-County Library

Carolyn Wells, Library Director
Valley County
408 Third Avenue South Glasgow, MT 59230
(406) 228-2731
Web Site: <http://www.nemontel.net/~2maizey/>
OCLC, HeritageQuest, Statewide Databases



Phillips County Library

Janeen Brookie, Library Director
Phillips County
PO Box 840 Malta, MT 59538
(406) 654-2407
OCLC, HeritageQuest, Statewide Databases



Roosevelt County Library

Andrea Hayes, Library Director
Roosevelt County
220 2nd Ave South Wolf Point, MT 59201
(406) 653-2411
Catalog: <http://mtscprod.msl.mt.gov/uhtbin/cgisirsi/x/0/0/49>
Montana Shared Catalog, OCLC, MyMontanaLibrary2Go, HeritageQuest, Statewide Databases



Sheridan County Library

Sheila Lee, Library Director
Sheridan County
100 West Laurel Ave Plentywood, MT 59254
(406) 765-2317
OCLC, HeritageQuest, Statewide Databases

Sidney-Richland County Library

Renee Goss, Library Director
Richland County
121 3rd Ave NW Sidney, MT 59270
(406) 433-1917
Web Site: <http://www.richland.org/spl/index.html>
Catalog: <http://216.228.51.243:7195/webopac/main>
OCLC, MyMontanaLibrary2Go, HeritageQuest, Ask Montana Participant, Montana Memory Project Participant, Statewide Databases

Branch



Culbertson Public Library

Karen Baxter, Branch Librarian
Roosevelt County
PO Box 415 Culbertson, MT 59218
(406) 787-5275
Catalog: <http://mtscprod.msl.mt.gov/uhtbin/cgisirsi/x/0/0/49>
Montana Shared Catalog, Statewide Databases



Dodson Branch Library

Bonnie Marney, Branch Librarian
Phillips County
121 2nd St East Dodson, MT 59524
(406) 284-3341
Statewide Databases

Froid Branch Library

Pattie Thompson, Branch Librarian
Roosevelt County
PO Box 188 Froid, MT 59226
(406) 766-2492
Catalog: <http://mtscprod.msl.mt.gov/uhtbin/cgisirsi/x/0/0/49>
Montana Shared Catalog, Statewide Databases

Opheim Community Library

Terry Risa, Branch Librarian
Valley County
PO Box 108 Opheim, MT 59250
(406) 762-3213
Statewide Databases

Poplar City Library

Jackie Hagadone, Branch Librarian
Roosevelt County
PO Box 515 Poplar, MT 59255
(406) 768-3749
Catalog: <http://mtscprod.msl.mt.gov/uhtbin/cgisirsi/x/0/0/49>
Montana Shared Catalog, Statewide Databases



Saco Branch Library

Esther Brosseau, Branch Librarian
Phillips County
PO Box 74 Saco, MT 59261
(406) 654-2407
Statewide Databases

Academic



Fort Peck Tribal Library

Anita Scheetz, Library Director
Roosevelt County
PO Box 398 Poplar, MT 59255
(406) 768-6340
Web Site: <http://www.fpcc.edu/library.htm>
OCLC, Ask Montana Participant, Statewide Databases

School

Bainville Public Schools

Diane Hansen, Library Director
Roosevelt County
PO Box 177 Bainville, MT 59212
(406) 769-2321
OCLC, Statewide Databases

Brockton Public Schools

Tiffani Anderson, School Librarian
Roosevelt County
PO Box 198 Brockton, MT 59213
(406) 786-3311
OCLC, Statewide Databases

Brorson Elementary

Lisa Fox, Supervising Teacher/Librarian
Richland County
PO Box 145 Sidney, MT 59270
(406) 798-7710
Statewide Databases

Culbertson Public School

Jill Herness, School Librarian
Roosevelt County
PO Box 459 Culbertson, MT 59218
(406) 787-6241
OCLC, Statewide Databases

Dodson Public Schools

Richene Bosche, School Librarian
Phillips County
PO Box 278 Dodson, MT 59524
(406) 383-4362
Statewide Databases

Fairview Public Schools

AnnDee Taylor, School Librarian
Richland County
PO Box 467 Fairview, MT 59221
(406) 742-5265
Web Site: <http://www.fschool.org>
Statewide Databases

Frazer Public Schools

Melissa Law, School Librarian
Valley County
PO Box 488 Frazer, MT 59225
(406) 695-2241
Statewide Databases

Froid School Library

Ellen Britton, School Librarian
Roosevelt County
PO Box 218 Froid, MT 59226
(406) 766-2303
OCLC, Statewide Databases

Frontier Elementary School

Virginia Ulrickson, School Librarian
Roosevelt County
Wolf Point, MT 59201
(406) 653-2501
Statewide Databases

Glasgow East Side Library

LeAnne Brandt, School Librarian
Valley County
PO Box 28 Glasgow, MT 59230
(406) 228-8268
Statewide Databases

Glasgow High School

Ryan Rebsom, School Librarian
Valley County
PO Box 28 Glasgow, MT 59230
(406) 228-2485
Statewide Databases

Hinsdale Public Schools

Brandy Howey, School Librarian
Valley County
PO Box 398 Hinsdale, MT 59241
(406) 364-2314
Statewide Databases

Lambert Public Schools

Sheri Moore, School Librarian
Richland County
PO Box 260 Lambert, MT 59243
(406) 774-3333
Web Site: <http://www.midrivers.com/~lhs>
OCLC, Statewide Databases

Loring Colony School

Lynne Nevriy, Supervising Teacher/Librarian
Phillips County
HC Box 14 Loring, MT 59538
(406) 674-5525
Statewide Databases

Lustre Christian High School

Bonnie Unrau, School Librarian
Valley County
HC 66 Box 57 Frazer, MT 59225
(406) 392-5735
Statewide Databases

Lustre Elementary

Vernelle Unrau, Supervising Teacher/Librarian
Valley County
HC 66 Box 58 Frazer, MT 59225
(406) 392-5780
Statewide Databases

Malta Elementary School

Lynne Nevriy, School Librarian
Phillips County
PO Box 670 Malta, MT 59538
(406) 654-2320
Statewide Databases

Malta Jr./Sr. High School

Penny Lind, School Librarian
Phillips County
PO Box 670 Malta, MT 59538
(406) 654-2002
Web Site: <http://www.montanavision.net/~maltahs/>
Statewide Databases

Medicine Lake Public Schools

Marial Hovet, Librarian
Sheridan County
PO Box 265 Medicine Lake, MT 59247
(406) 789-2211
Statewide Databases

Nashua Public Schools

Ruth Mehl, School Librarian
Valley County
PO Box 170 Nashua, MT 59248
(406) 746-3411
Statewide Databases

Northside School Library

Virginia Ulrickson, School Librarian
Roosevelt County
710 Fourth Avenue North Wolf Point, MT 59201
(406) 653-1653
Statewide Databases

Opheim Public Schools

Terry Risa, School Librarian
Valley County
PO Box 108 Opheim, MT 59250
(406) 762-3213
OCLC, Statewide Databases

Peerless Public Schools

Judy Kjos, School Librarian
Daniels County
PO Box 475 Peerless, MT 59253
(406) 893-4377
Statewide Databases

Plentywood Public Schools

Carol O'Toole, School Librarian
Sheridan County
100 E Laurel Ave Plentywood, MT 59254
(406) 765-1803
Statewide Databases

Poplar High School Library

Diane Elliott, School Librarian
Roosevelt County
PO Box 458 Poplar, MT 59255
(406) 768-3408
Statewide Databases

Poplar Public Schools

Shannon SpottedBird, Librarian
Roosevelt County
PO Box 458 Poplar, MT 59255
(406) 768-3409
Statewide Databases

R L Irlle Elementary School

LeAnne Brandt, School Librarian
Valley County
825 8th Ave N Glasgow, MT 59230
(406) 228-2419
Statewide Databases

Rau Elementary School

Carolyn Koch, School Librarian
Richland County
HC 57 Box 4030 Sidney, MT 59270
(406) 482-6032
Statewide Databases

Saco Public Schools

Anita Freeman, School Librarian
Phillips County
PO Box 298 Saco, MT 59261
(406) 527-3531
Statewide Databases

Scobey Public Schools

Cecilia Raaum, Librarian
Daniels County
PO Box 10 Scobey, MT 59263
(406) 487-2202
Statewide Databases

Sidney Elementary School Library

Dawn Greenwood, School Librarian
Richland County
Sidney, MT 59270
(406) 433-5501
Web Site: <http://www.sidneyps.com/ws/personnel/dgreenwood/index.html>
OCLC, Statewide Databases

Sidney High School Library

Lynn Donovan, School Librarian
Richland County
1012 4th Ave SE Sidney, MT 59270
(406) 433-2330
Web Site: <http://www.sidneyhs.com/hs/Library/index.html>
Catalog: <http://www.sidneyhs.com:7195/webopac/main>
OCLC, Statewide Databases

Sidney Middle School Library

Cindy Wagner, School Librarian
Richland County
415 South Central Avenue Sidney, MT 59270
(406) 482-4050
Web Site: <http://www.sidneyps.com/ms/msfcscw/library/index.html>
Catalog: <http://www.sidneyps.com/ms/msfcscw/library/page2.html>
Statewide Databases

Southside Elementary Schools Library

Kathy Dunne, School Librarian
Roosevelt County
415 4th Avenue South Wolf Point, MT 59201
(406) 653-1480
Statewide Databases

Tallow Creek School Library

Jenny Crowder, Supervising Teacher/Librarian
Phillips County
HC 84 Box 8075 Malta, MT 59538
(406) 658-2643
Statewide Databases

Turner School Library

Shelly Harmon, School Librarian
Blaine County
PO Box 40 Turner, MT 59542
(406) 379-2219
Statewide Databases

Westby Public School Library

Gayle Overgaard, School Librarian
Sheridan County
PO Box 109 Westby, MT 59275
(406) 385-2225
Statewide Databases

Whitewater Public Schools Library

Heidi Cummings, School Librarian
Phillips County
PO Box 46 Whitewater, MT 59544
(406) 674-5417
Statewide Databases

Wolf Point Jr/Sr High Library

Dorlis Ebner, School Librarian
Roosevelt County
213 6th Ave S Wolf Point, MT 59201
(406) 653-1200
Statewide Databases

Special**Lillian Anderson Jensen Memorial Library**

Sandy Turner, Administrative Coordinator
Richland County
120 3rd Ave SE Sidney, MT 59270
(406) 433-3500
Statewide Databases

State of Montana Index

	Montana	United States	Rank in US
Geography			
Population per square mile 2000	6.2	79.6	27
Households 2000 (complete count)	358,667	105,480,101	22
Persons per household 2000 (complete count)	2.5	2.6	32
Resident Population			
Estimate (July 1) 2006	944,632	299,398,484	23
Estimate, percent change - April 1, 2000 to July 1, 2006	4.7	6.4	34
Estimate, net change - April 1, 2000 to July 1, 2006	42,437	17,973,882	27
(April 1) 2000 (complete count)	902,195	281,421,906	23
Under 5 years of age (July 1) 2006	57,916	20,417,636	24
Under 5 years of age, percent (July 1) 2006	6.1	6.80	30
Under 18 years of age (July 1) 2006	217,848	73,735,562	23
Under 18 years of age, percent (July 1) 2006	23.1	24.6	23
65 years and over (July 1) 2006	14	37,260,352	22
65 years and over, percent (July 1) 2006	130,592	12	12
Total females, percent (July 1) 2006	50.0	50.7	6
White alone (July 1) 2006	858,140	239,746,254	25
Black alone (July 1) 2006	4,094	38,342,549	16
American Indian and Alaska Native alone (July 1) 2006	60,725	2,902,851	30
Asian alone (July 1) 2006	5,699	13,159,343	33
Native Hawaiian and Other Pacific Islander alone (July 1) 2006	527	528,818	36
Population 5 years and over, percent speaking language other than English at	5.2	17.9	48
Civilian noninstitutionalized population, 5 years and over, with a disability 2000	145,732	49,746,248	18
Vital Statistics			
Births 2004	11,519	4,112,052	24
Deaths 2004	8,094	2,397,615	17
Infant deaths under one year 2004	52	27,936	20
Population 5 years and over by residence in 1995 - percent in same house 2000 (sample)	53.6	54.1	13
Percent foreign born population 2000 (sample)	1.8	11.1	45
Education			
Educational attainment - persons 25 years and over - percent high school graduate or higher 2000	87.2	80.4	46
Educational attainment - persons 25 years and over - percent bachelor's degree or higher 2000	24.4	24.4	45
Income/Poverty			
Per capita income in 1999	17,151	21,587	39
Median household income 2004	35,574	44,334	45
People of all ages in poverty - percent 2004	14	13	8
Personal Income (NAICS) 2005	27,122	10,220,942	24
Per capita personal income (NAICS) 2005	29,015	34,471	41
Federal			
Federal Government expenditure - total FY 2004	7,493,567	2,143,781,727	19
Federal Government expenditure per capita FY 2004	8,085	7,300	10
Housing			
Housing unit estimates as of July 1, 2006	432,023	126,316,181	22
Housing unit estimates - net change, April 1, 2000 (base) to July 1, 2006	19,390	10,411,707	24
Housing unit estimates - percent change, April 1, 2000 (base) to July 1, 2006	4.70	9.00	26
Owner-occupied housing units - percent of total occupied housing units 2000 (complete count)	69.1	66.2	4
Median value of specified owner-occupied housing units 2000 (sample)	99,500	119,600	41
Housing units by units in structure - multiple units 2000 (sample)	15.7	26.40	44
New private housing units authorized by building permits - total 2006 (20,000-place universe)	4,542	1,838,903	18
Valuation of new private housing units authorized by building permits 2006	723,109	291,314,492	23
Employment/Business			
Civilian labor force 2006	493,842	151,428,000	23
Civilian labor force unemployment 2006	15,680	7,001,000	29
Civilian labor force unemployment rate 2006	3.2	4.6	38
Employment in all industries (NAICS) 2005	613,425	174,249,600	23
Employment in all industries (NAICS), net change 2000 (SIC)- 2005	54,370	7,490,800	20
Employment in government and government enterprises (NAICS) 2005	92,756	23,837,000	24
Earnings in all industries (NAICS, no code) 2005	19,787,993	7,983,652,000	24
Earnings in all industries (NAICS, no code), average earnings per job 2005	32,258	45,817	32
Average travel time to work for workers 16 years and over not working at home 2000	17.7	25.5	19
Private nonfarm establishments 2005	35,736	7,499,702	26
Private nonfarm employment for pay period including March 12, 2005	326,887	116,317,003	23
Private nonfarm employment for pay period including March 12, 2005, percent change 2000-2005	10.4	2.0	35
Nonemployer: total (NAICS 00) establishments, 2005	80,851	20,392,068	23
Accommodation and Food Services: total (NAICS 72) - sales of establishments with payroll 2002	1,537,986	449,498,718	31
Total number of firms 2002	100,402	22,974,655	24
Manufacturing: total (NAICS 31-33) - value of shipments 2002	4,987,577	3,916,136,712	23
Wholesale trade: total (NAICS 42) - sales of establishments with payroll 2002	7,223,420	4,634,755,112	28
Retail trade: total (NAICS 44-45) - sales of establishments with payroll 2002	10,122,625	3,056,421,997	23
Retail trade: total (NAICS 44-45) - sales of establishments with payroll per capita 2002	11,116	10,615	42
Land in farms (NAICS) 2002(acres)(not adjusted)	59,612,403	938,279,056	32

Source: U.S. Census Bureau

Daniels County Index

	County	Montana	Rank in MT
Geography			
Population per square mile 2000	1.4	6.2	44
Households 2000 (complete count)	892	358,667	44
Persons per household 2000 (complete count)	2.2	2.5	55
Resident Population			
Estimate (July 1) 2006	1,774	944,632	47
Estimate, percent change - April 1, 2000 to July 1, 2006	-12.0	4.7	52
Estimate, net change - April 1, 2000 to July 1, 2006	-243	42,437	39
(April 1) 2000 (complete count)	2,017	902,195	46
Under 5 years of age (July 1) 2006	73	57,916	48
Under 5 years of age, percent (July 1) 2006	4.1	6.1	42
Under 18 years of age (July 1) 2006	333	217,848	49
Under 18 years of age, percent (July 1) 2006	18.8	23.1	50
65 years and over (July 1) 2006	421	130,592	44
65 years and over, percent (July 1) 2006	23.7	13.8	2
Total females, percent (July 1) 2006	50.2	50.0	20
White alone (July 1) 2006	1,704	858,140	47
Black alone (July 1) 2006	5	4,094	39
American Indian and Alaska Native alone (July 1) 2006	30	60,725	43
Asian alone (July 1) 2006	6	5,699	44
Native Hawaiian and Other Pacific Islander alone (July 1) 2006	1	527	28
Population 5 years and over, percent speaking language other than English at	3	5	44
Civilian noninstitutionalized population, 5 years and over, with a disability 2000	318	145,732	46
Vital Statistics			
Births 2004	14	11,519	46
Deaths 2004	24	8,094	42
Infant deaths under one year 2004	0	52	27
Population 5 years and over by residence in 1995 - percent in same house 2000 (sample)	69.2	53.6	7.0
Percent foreign born population 2000 (sample)	4.7	1.8	1
Education			
Educational attainment - persons 25 years and over - percent high school graduate or higher 2000	85.3	87.2	23
Educational attainment - persons 25 years and over - percent bachelor's degree or higher 2000	14.1	24.4	51
Income/Poverty			
Per capita income in 1999	16,055	17,151	19
Median household income 2004	29,052	35,574	48
People of all ages in poverty - percent 2004	11	14	46
Personal Income (NAICS) 2005	54	27,122	43
Per capita personal income (NAICS) 2005	29,353	29,015	15
Federal			
Federal Government expenditure - total FY 2004	27,193	7,493,567	43
Federal Government expenditure per capita FY 2004	14,747	8,085	5
Housing			
Housing unit estimates as of July 1, 2006	1,144	432,023	46
Housing unit estimates - net change, April 1, 2000 (base) to July 1, 2006	-10	19,390	47
Housing unit estimates - percent change, April 1, 2000 (base) to July 1, 2006	-0.9	4.7	56
Owner-occupied housing units - percent of total occupied housing units 2000 (complete count)	78.4	69.1	4
Median value of specified owner-occupied housing units 2000 (sample)	45,100	99,500	50
Housing units by units in structure - multiple units 2000 (sample)	6.3	15.70	36
New private housing units authorized by building permits - total 2006 (20,000-place universe)	2	4,542	29
Valuation of new private housing units authorized by building permits 2006	305	723,109	29
Employment/Business			
Civilian labor force 2006	736	493,842	49
Civilian labor force unemployment 2006	23	15,680	49
Civilian labor force unemployment rate 2006	3.1	3.2	31
Employment in all industries (NAICS) 2005	1,487	613,425	43
Employment in all industries (NAICS), net change 2000 (SIC)- 2005	-202	54,370	57
Employment in government and government enterprises (NAICS) 2005	189	92,756	46
Earnings in all industries (NAICS, no code) 2005	33,369	19,787,993	44
Earnings in all industries (NAICS, no code), average earnings per job 2005	22,440	32,258	41
Average travel time to work for workers 16 years and over not working at home 2000	12.5	17.7	52
Private nonfarm establishments 2005	76	35,736	43
Private nonfarm employment for pay period including March 12, 2005	545	326,887	42
Private nonfarm employment for pay period including March 12, 2005, percent change 2000-2005	3.8	10.40	28
Nonemployer: total (NAICS 00) establishments, 2005	152	80,851	45
Accommodation and Food Services: total (NAICS 72) - sales of establishments with payroll 2002	833	1,537,986	47
Total number of firms 2002	209	100,402	45
Manufacturing: total (NAICS 31-33) - value of shipments 2002	0	4,987,577	17
Wholesale trade: total (NAICS 42) - sales of establishments with payroll 2002	6,477	7,223,420	35
Retail trade: total (NAICS 44-45) - sales of establishments with payroll 2002	20,009	10,122,625	40
Retail trade: total (NAICS 44-45) - sales of establishments with payroll per capita 2002	10,335	11,116	11
Land in farms (NAICS) 2002(acres)(not adjusted)	815,443	59,612,403	36

Source: U.S. Census Bureau

Phillips County Index

	County	Montana	Rank in MT
Geography			
Population per square mile 2000	0.9	6.2	48
Households 2000 (complete count)	1,848	358,667	36
Persons per household 2000 (complete count)	2.5	2.5	24
Resident Population			
Estimate (July 1) 2006	4,098	944,632	37
Estimate, percent change - April 1, 2000 to July 1, 2006	-10.9	4.7	50
Estimate, net change - April 1, 2000 to July 1, 2006	-503	42,437	50
(April 1) 2000 (complete count)	4,601	902,195	35
Under 5 years of age (July 1) 2006	194	57,916	37
Under 5 years of age, percent (July 1) 2006	4.7	6.1	37
Under 18 years of age (July 1) 2006	914	217,848	36
Under 18 years of age, percent (July 1) 2006	22.3	23.1	22
65 years and over (July 1) 2006	831	130,592	36
65 years and over, percent (July 1) 2006	20.3	13.8	8
Total females, percent (July 1) 2006	49.4	50.0	38
White alone (July 1) 2006	3,645	858,140	38
Black alone (July 1) 2006	7	4,094	34
American Indian and Alaska Native alone (July 1) 2006	353	60,725	20
Asian alone (July 1) 2006	9	5,699	38
Native Hawaiian and Other Pacific Islander alone (July 1) 2006	1	527	35
Population 5 years and over, percent speaking language other than English at	4	5	31
Civilian noninstitutionalized population, 5 years and over, with a disability 2000	830	145,732	35
Vital Statistics			
Births 2004	36	11,519	37
Deaths 2004	38	8,094	39
Infant deaths under one year 2004	0	52	40
Population 5 years and over by residence in 1995 - percent in same house 2000 (sample)	64.8	53.6	20.0
Percent foreign born population 2000 (sample)	1.0	1.8	49
Education			
Educational attainment - persons 25 years and over - percent high school graduate or higher 2000	82.4	87.2	41
Educational attainment - persons 25 years and over - percent bachelor's degree or higher 2000	17.1	24.4	33
Income/Poverty			
Per capita income in 1999	15,058	17,151	34
Median household income 2004	31,742	35,574	30
People of all ages in poverty - percent 2004	16	14	15
Personal Income (NAICS) 2005	100	27,122	37
Per capita personal income (NAICS) 2005	24,156	29,015	40
Federal			
Federal Government expenditure - total FY 2004	47,385	7,493,567	33
Federal Government expenditure per capita FY 2004	11,279	8,085	12
Housing			
Housing unit estimates as of July 1, 2006	2,491	432,023	34
Housing unit estimates - net change, April 1, 2000 (base) to July 1, 2006	-11	19,390	49
Housing unit estimates - percent change, April 1, 2000 (base) to July 1, 2006	-0.4	4.7	43
Owner-occupied housing units - percent of total occupied housing units 2000 (complete count)	70.6	69.1	38
Median value of specified owner-occupied housing units 2000 (sample)	60,700	99,500	36
Housing units by units in structure - multiple units 2000 (sample)	10.0	15.70	25
New private housing units authorized by building permits - total 2006 (20,000-place universe)	0	4,542	49
Valuation of new private housing units authorized by building permits 2006	0	723,109	49
Employment/Business			
Civilian labor force 2006	2,051	493,842	37
Civilian labor force unemployment 2006	73	15,680	35
Civilian labor force unemployment rate 2006	3.6	3.2	20
Employment in all industries (NAICS) 2005	2,687	613,425	36
Employment in all industries (NAICS), net change 2000 (SIC)- 2005	-87	54,370	54
Employment in government and government enterprises (NAICS) 2005	439	92,756	35
Earnings in all industries (NAICS, no code) 2005	55,999	19,787,993	39
Earnings in all industries (NAICS, no code), average earnings per job 2005	20,841	32,258	47
Average travel time to work for workers 16 years and over not working at home 2000	14.3	17.7	42
Private nonfarm establishments 2005	152	35,736	35
Private nonfarm employment for pay period including March 12, 2005	798	326,887	39
Private nonfarm employment for pay period including March 12, 2005, percent change 2000-2005	-0.5	10.40	42
Nonemployer: total (NAICS 00) establishments, 2005	326	80,851	39
Accommodation and Food Services: total (NAICS 72) - sales of establishments with payroll 2002	3,358	1,537,986	35
Total number of firms 2002	469	100,402	36
Manufacturing: total (NAICS 31-33) - value of shipments 2002	0	4,987,577	38
Wholesale trade: total (NAICS 42) - sales of establishments with payroll 2002	43,716	7,223,420	16
Retail trade: total (NAICS 44-45) - sales of establishments with payroll 2002	30,522	10,122,625	33
Retail trade: total (NAICS 44-45) - sales of establishments with payroll per capita 2002	7,007	11,116	22
Land in farms (NAICS) 2002(acres)(not adjusted)	1,896,941	59,612,403	9

Source: U.S. Census Bureau

Richland County Index

	County	Montana	Rank in MT
Geography			
Population per square mile 2000	4.6	6.2	16
Households 2000 (complete count)	3,878	358,667	20
Persons per household 2000 (complete count)	2.5	2.5	21
Resident Population			
Estimate (July 1) 2006	9,295	944,632	21
Estimate, percent change - April 1, 2000 to July 1, 2006	-3.8	4.7	34
Estimate, net change - April 1, 2000 to July 1, 2006	-372	42,437	44
(April 1) 2000 (complete count)	9,667	902,195	20
Under 5 years of age (July 1) 2006	519	57,916	20
Under 5 years of age, percent (July 1) 2006	5.6	6.1	22
Under 18 years of age (July 1) 2006	2,177	217,848	21
Under 18 years of age, percent (July 1) 2006	23.4	23.1	14
65 years and over (July 1) 2006	1,515	130,592	19
65 years and over, percent (July 1) 2006	16.3	13.8	36
Total females, percent (July 1) 2006	50.3	50.0	18
White alone (July 1) 2006	8,994	858,140	18
Black alone (July 1) 2006	10	4,094	30
American Indian and Alaska Native alone (July 1) 2006	195	60,725	26
Asian alone (July 1) 2006	22	5,699	28
Native Hawaiian and Other Pacific Islander alone (July 1) 2006	1	527	36
Population 5 years and over, percent speaking language other than English at	3	5	50
Civilian noninstitutionalized population, 5 years and over, with a disability 2000	1,484	145,732	21
Vital Statistics			
Births 2004	110	11,519	20
Deaths 2004	88	8,094	23
Infant deaths under one year 2004	0	52	46
Population 5 years and over by residence in 1995 - percent in same house 2000 (sample)	64.5	53.6	22.0
Percent foreign born population 2000 (sample)	1.4	1.8	36
Education			
Educational attainment - persons 25 years and over - percent high school graduate or higher 2000	83.5	87.2	32
Educational attainment - persons 25 years and over - percent bachelor's degree or higher 2000	17.2	24.4	32
Income/Poverty			
Per capita income in 1999	16,006	17,151	22
Median household income 2004	37,941	35,574	8
People of all ages in poverty - percent 2004	12	14	33
Personal Income (NAICS) 2005	267	27,122	19
Per capita personal income (NAICS) 2005	29,112	29,015	18
Federal			
Federal Government expenditure - total FY 2004	67,049	7,493,567	23
Federal Government expenditure per capita FY 2004	7,358	8,085	36
Housing			
Housing unit estimates as of July 1, 2006	4,577	432,023	23
Housing unit estimates - net change, April 1, 2000 (base) to July 1, 2006	20	19,390	21
Housing unit estimates - percent change, April 1, 2000 (base) to July 1, 2006	0.4	4.7	21
Owner-occupied housing units - percent of total occupied housing units 2000 (complete count)	72.4	69.1	32
Median value of specified owner-occupied housing units 2000 (sample)	61,000	99,500	34
Housing units by units in structure - multiple units 2000 (sample)	16.1	15.70	11
New private housing units authorized by building permits - total 2006 (20,000-place universe)	18	4,542	15
Valuation of new private housing units authorized by building permits 2006	4,910	723,109	12
Employment/Business			
Civilian labor force 2006	5,023	493,842	19
Civilian labor force unemployment 2006	126	15,680	24
Civilian labor force unemployment rate 2006	2.5	3.2	51
Employment in all industries (NAICS) 2005	6,882	613,425	15
Employment in all industries (NAICS), net change 2000 (SIC)- 2005	676	54,370	13
Employment in government and government enterprises (NAICS) 2005	728	92,756	27
Earnings in all industries (NAICS, no code) 2005	202,397	19,787,993	16
Earnings in all industries (NAICS, no code), average earnings per job 2005	29,410	32,258	16
Average travel time to work for workers 16 years and over not working at home 2000	13.5	17.7	46
Private nonfarm establishments 2005	424	35,736	14
Private nonfarm employment for pay period including March 12, 2005	3,618	326,887	14
Private nonfarm employment for pay period including March 12, 2005, percent change 2000-2005	17.2	10.40	8
Nonemployer: total (NAICS 00) establishments, 2005	783	80,851	20
Accommodation and Food Services: total (NAICS 72) - sales of establishments with payroll 2002	11,631	1,537,986	20
Total number of firms 2002	1,042	100,402	20
Manufacturing: total (NAICS 31-33) - value of shipments 2002	0	4,987,577	43
Wholesale trade: total (NAICS 42) - sales of establishments with payroll 2002	252,710	7,223,420	7
Retail trade: total (NAICS 44-45) - sales of establishments with payroll 2002	104,540	10,122,625	14
Retail trade: total (NAICS 44-45) - sales of establishments with payroll per capita 2002	11,270	11,116	9
Land in farms (NAICS) 2002(acres)(not adjusted)	1,201,436	59,612,403	21

Source: U.S. Census Bureau

Roosevelt County Index

	County	Montana	Rank in MT
Geography			
Population per square mile 2000	4.5	6.2	18
Households 2000 (complete count)	3,581	358,667	24
Persons per household 2000 (complete count)	2.9	2.5	3
Resident Population			
Estimate (July 1) 2006	10,496	944,632	19
Estimate, percent change - April 1, 2000 to July 1, 2006	-1.2	4.7	26
Estimate, net change - April 1, 2000 to July 1, 2006	-124	42,437	31
(April 1) 2000 (complete count)	10,620	902,195	17
Under 5 years of age (July 1) 2006	1,079	57,916	13
Under 5 years of age, percent (July 1) 2006	10.3	6.1	1
Under 18 years of age (July 1) 2006	3,513	217,848	14
Under 18 years of age, percent (July 1) 2006	33.5	23.1	1
65 years and over (July 1) 2006	1,086	130,592	27
65 years and over, percent (July 1) 2006	10.3	13.8	52
Total females, percent (July 1) 2006	50.4	50.0	14
White alone (July 1) 2006	3,955	858,140	35
Black alone (July 1) 2006	16	4,094	24
American Indian and Alaska Native alone (July 1) 2006	6,183	60,725	4
Asian alone (July 1) 2006	55	5,699	13
Native Hawaiian and Other Pacific Islander alone (July 1) 2006	5	527	16
Population 5 years and over, percent speaking language other than English at	7	5	13
Civilian noninstitutionalized population, 5 years and over, with a disability 2000	1,596	145,732	19
Vital Statistics			
Births 2004	240	11,519	13
Deaths 2004	109	8,094	16
Infant deaths under one year 2004	3	52	7
Population 5 years and over by residence in 1995 - percent in same house 2000 (sample)	68.8	53.6	9.0
Percent foreign born population 2000 (sample)	0.9	1.8	50
Education			
Educational attainment - persons 25 years and over - percent high school graduate or higher 2000	80.6	87.2	47
Educational attainment - persons 25 years and over - percent bachelor's degree or higher 2000	15.6	24.4	43
Income/Poverty			
Per capita income in 1999	11,347	17,151	55
Median household income 2004	27,067	35,574	53
People of all ages in poverty - percent 2004	27	14	1
Personal Income (NAICS) 2005	220	27,122	25
Per capita personal income (NAICS) 2005	20,755	29,015	55
Federal			
Federal Government expenditure - total FY 2004	144,221	7,493,567	11
Federal Government expenditure per capita FY 2004	13,529	8,085	9
Housing			
Housing unit estimates as of July 1, 2006	4,037	432,023	26
Housing unit estimates - net change, April 1, 2000 (base) to July 1, 2006	-7	19,390	42
Housing unit estimates - percent change, April 1, 2000 (base) to July 1, 2006	-0.2	4.7	33
Owner-occupied housing units - percent of total occupied housing units 2000 (complete count)	65.1	69.1	48
Median value of specified owner-occupied housing units 2000 (sample)	47,400	99,500	48
Housing units by units in structure - multiple units 2000 (sample)	8.1	15.70	28
New private housing units authorized by building permits - total 2006 (20,000-place universe)	3	4,542	26
Valuation of new private housing units authorized by building permits 2006	393	723,109	25
Employment/Business			
Civilian labor force 2006	3,849	493,842	26
Civilian labor force unemployment 2006	216	15,680	17
Civilian labor force unemployment rate 2006	5.6	3.2	4
Employment in all industries (NAICS) 2005	5,357	613,425	24
Employment in all industries (NAICS), net change 2000 (SIC)- 2005	42	54,370	42
Employment in government and government enterprises (NAICS) 2005	1,876	92,756	14
Earnings in all industries (NAICS, no code) 2005	144,957	19,787,993	23
Earnings in all industries (NAICS, no code), average earnings per job 2005	27,059	32,258	23
Average travel time to work for workers 16 years and over not working at home 2000	11.7	17.7	56
Private nonfarm establishments 2005	213	35,736	27
Private nonfarm employment for pay period including March 12, 2005	1,694	326,887	26
Private nonfarm employment for pay period including March 12, 2005, percent change 2000-2005	-6.7	10.40	52
Nonemployer: total (NAICS 00) establishments, 2005	548	80,851	25
Accommodation and Food Services: total (NAICS 72) - sales of establishments with payroll 2002	7,563	1,537,986	29
Total number of firms 2002	698	100,402	27
Manufacturing: total (NAICS 31-33) - value of shipments 2002	0	4,987,577	44
Wholesale trade: total (NAICS 42) - sales of establishments with payroll 2002	55,299	7,223,420	15
Retail trade: total (NAICS 44-45) - sales of establishments with payroll 2002	83,386	10,122,625	17
Retail trade: total (NAICS 44-45) - sales of establishments with payroll per capita 2002	7,990	11,116	18
Land in farms (NAICS) 2002(acres)(not adjusted)	1,441,479	59,612,403	15

Source: U.S. Census Bureau

Sheridan County Index

	County	Montana	Rank in MT
Geography			
Population per square mile 2000	2.4	6.2	32
Households 2000 (complete count)	1,741	358,667	38
Persons per household 2000 (complete count)	2.3	2.5	51
Resident Population			
Estimate (July 1) 2006	3,447	944,632	40
Estimate, percent change - April 1, 2000 to July 1, 2006	-16.0	4.7	56
Estimate, net change - April 1, 2000 to July 1, 2006	-658	42,437	54
(April 1) 2000 (complete count)	4,105	902,195	38
Under 5 years of age (July 1) 2006	111	57,916	42
Under 5 years of age, percent (July 1) 2006	3.2	6.1	54
Under 18 years of age (July 1) 2006	607	217,848	40
Under 18 years of age, percent (July 1) 2006	17.6	23.1	54
65 years and over (July 1) 2006	877	130,592	34
65 years and over, percent (July 1) 2006	25.4	13.8	1
Total females, percent (July 1) 2006	50.4	50.0	15
White alone (July 1) 2006	3,325	858,140	40
Black alone (July 1) 2006	6	4,094	37
American Indian and Alaska Native alone (July 1) 2006	58	60,725	38
Asian alone (July 1) 2006	10	5,699	35
Native Hawaiian and Other Pacific Islander alone (July 1) 2006	1	527	38
Population 5 years and over, percent speaking language other than English at	3	5	42
Civilian noninstitutionalized population, 5 years and over, with a disability 2000	628	145,732	39
Vital Statistics			
Births 2004	28	11,519	41
Deaths 2004	62	8,094	31
Infant deaths under one year 2004	0	52	48
Population 5 years and over by residence in 1995 - percent in same house 2000 (sample)	72.6	53.6	4.0
Percent foreign born population 2000 (sample)	1.9	1.8	15
Education			
Educational attainment - persons 25 years and over - percent high school graduate or higher 2000	81.2	87.2	45
Educational attainment - persons 25 years and over - percent bachelor's degree or higher 2000	18.4	24.4	25
Income/Poverty			
Per capita income in 1999	16,038	17,151	20
Median household income 2004	31,791	35,574	29
People of all ages in poverty - percent 2004	12	14	32
Personal Income (NAICS) 2005	103	27,122	36
Per capita personal income (NAICS) 2005	29,373	29,015	14
Federal			
Federal Government expenditure - total FY 2004	51,778	7,493,567	30
Federal Government expenditure per capita FY 2004	14,303	8,085	6
Housing			
Housing unit estimates as of July 1, 2006	2,148	432,023	37
Housing unit estimates - net change, April 1, 2000 (base) to July 1, 2006	-19	19,390	53
Housing unit estimates - percent change, April 1, 2000 (base) to July 1, 2006	-0.9	4.7	57
Owner-occupied housing units - percent of total occupied housing units 2000 (complete count)	80.2	69.1	2
Median value of specified owner-occupied housing units 2000 (sample)	45,800	99,500	49
Housing units by units in structure - multiple units 2000 (sample)	9.3	15.70	26
New private housing units authorized by building permits - total 2006 (20,000-place universe)	0	4,542	54
Valuation of new private housing units authorized by building permits 2006	0	723,109	54
Employment/Business			
Civilian labor force 2006	1,704	493,842	41
Civilian labor force unemployment 2006	49	15,680	40
Civilian labor force unemployment rate 2006	2.9	3.2	40
Employment in all industries (NAICS) 2005	2,539	613,425	37
Employment in all industries (NAICS), net change 2000 (SIC)- 2005	74	54,370	36
Employment in government and government enterprises (NAICS) 2005	376	92,756	37
Earnings in all industries (NAICS, no code) 2005	56,367	19,787,993	37
Earnings in all industries (NAICS, no code), average earnings per job 2005	22,200	32,258	42
Average travel time to work for workers 16 years and over not working at home 2000	12.8	17.7	50
Private nonfarm establishments 2005	141	35,736	38
Private nonfarm employment for pay period including March 12, 2005	916	326,887	35
Private nonfarm employment for pay period including March 12, 2005, percent change 2000-2005	4.2	10.40	26
Nonemployer: total (NAICS 00) establishments, 2005	283	80,851	41
Accommodation and Food Services: total (NAICS 72) - sales of establishments with payroll 2002	3,706	1,537,986	33
Total number of firms 2002	457	100,402	39
Manufacturing: total (NAICS 31-33) - value of shipments 2002	0	4,987,577	47
Wholesale trade: total (NAICS 42) - sales of establishments with payroll 2002	22,735	7,223,420	24
Retail trade: total (NAICS 44-45) - sales of establishments with payroll 2002	26,233	10,122,625	35
Retail trade: total (NAICS 44-45) - sales of establishments with payroll per capita 2002	6,891	11,116	24
Land in farms (NAICS) 2002(acres)(not adjusted)	1,046,892	59,612,403	23

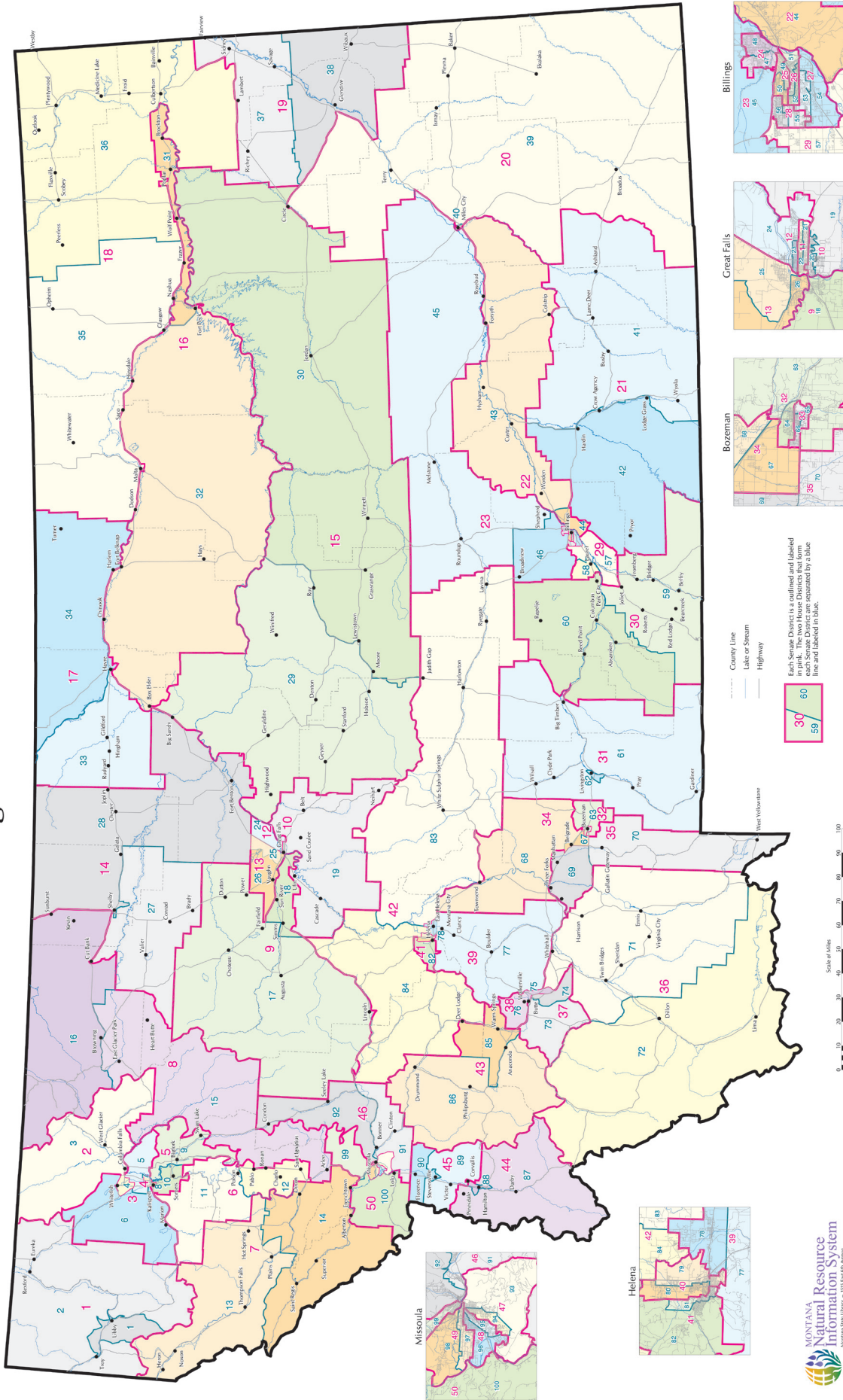
Source: U.S. Census Bureau

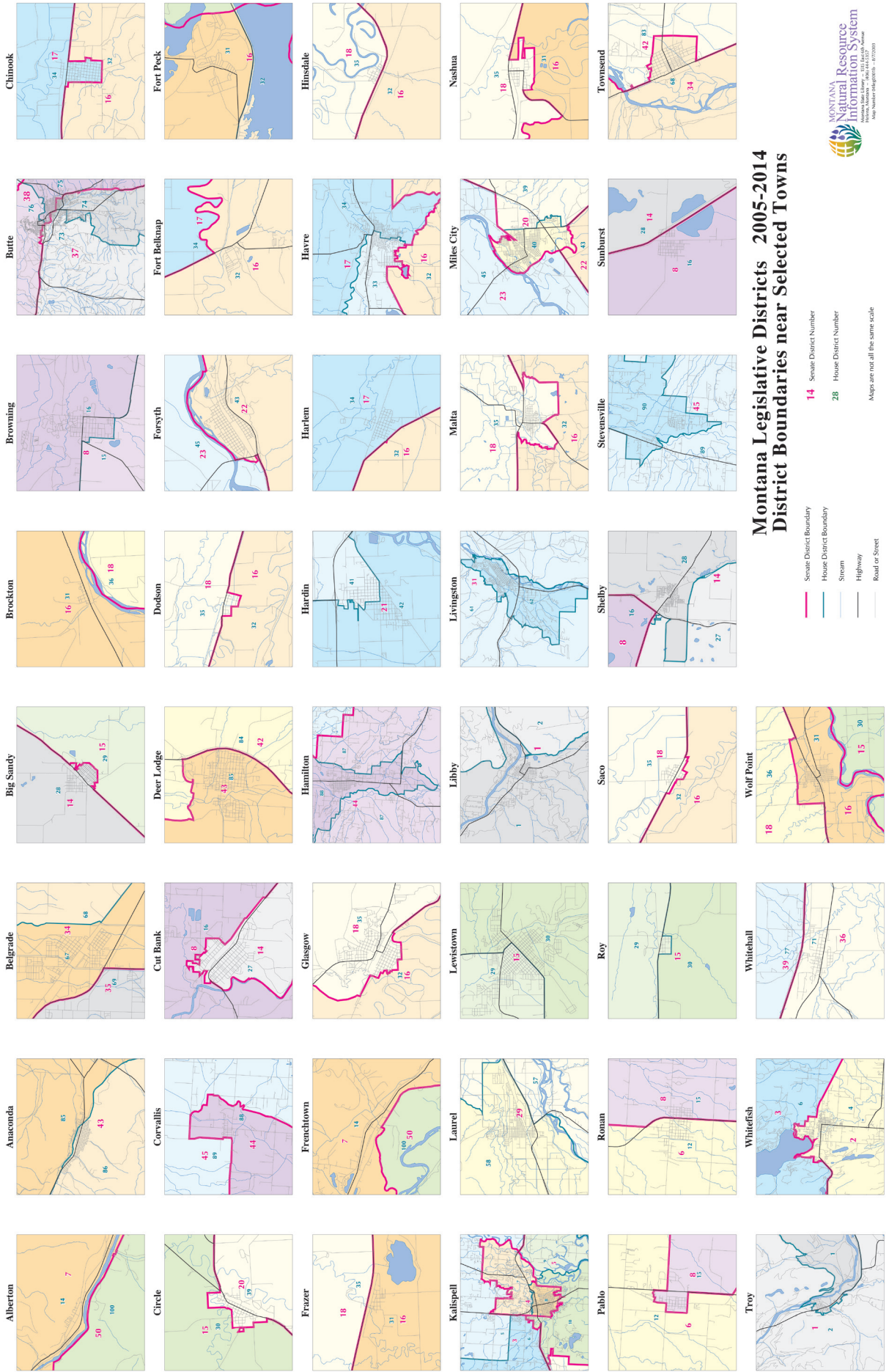
Valley County Index

	County	Montana	Rank in MT
Geography			
Population per square mile 2000	1.6	6.2	40
Households 2000 (complete count)	3,150	358,667	27
Persons per household 2000 (complete count)	2.4	2.5	38
Resident Population			
Estimate (July 1) 2006	6,995	944,632	29
Estimate, percent change - April 1, 2000 to July 1, 2006	-8.9	4.7	47
Estimate, net change - April 1, 2000 to July 1, 2006	-680	42,437	55
(April 1) 2000 (complete count)	7,675	902,195	27
Under 5 years of age (July 1) 2006	372	57,916	28
Under 5 years of age, percent (July 1) 2006	5.3	6.1	26
Under 18 years of age (July 1) 2006	1,545	217,848	28
Under 18 years of age, percent (July 1) 2006	22.1	23.1	26
65 years and over (July 1) 2006	1,430	130,592	20
65 years and over, percent (July 1) 2006	20.4	13.8	7
Total females, percent (July 1) 2006	50.6	50.0	11
White alone (July 1) 2006	6,119	858,140	25
Black alone (July 1) 2006	10	4,094	32
American Indian and Alaska Native alone (July 1) 2006	717	60,725	17
Asian alone (July 1) 2006	28	5,699	24
Native Hawaiian and Other Pacific Islander alone (July 1) 2006	1	527	41
Population 5 years and over, percent speaking language other than English at	3	5	43
Civilian noninstitutionalized population, 5 years and over, with a disability 2000	1,371	145,732	27
Vital Statistics			
Births 2004	71	11,519	29
Deaths 2004	90	8,094	22
Infant deaths under one year 2004	0	52	54
Population 5 years and over by residence in 1995 - percent in same house 2000 (sample)	69.7	53.6	6.0
Percent foreign born population 2000 (sample)	1.1	1.8	43
Education			
Educational attainment - persons 25 years and over - percent high school graduate or higher 2000	83.9	87.2	31
Educational attainment - persons 25 years and over - percent bachelor's degree or higher 2000	15.7	24.4	42
Income/Poverty			
Per capita income in 1999	16,246	17,151	16
Median household income 2004	34,514	35,574	19
People of all ages in poverty - percent 2004	14	14	23
Personal Income (NAICS) 2005	224	27,122	23
Per capita personal income (NAICS) 2005	31,328	29,015	3
Federal			
Federal Government expenditure - total FY 2004	84,008	7,493,567	19
Federal Government expenditure per capita FY 2004	11,555	8,085	11
Housing			
Housing unit estimates as of July 1, 2006	4,818	432,023	19
Housing unit estimates - net change, April 1, 2000 (base) to July 1, 2006	-29	19,390	57
Housing unit estimates - percent change, April 1, 2000 (base) to July 1, 2006	-0.6	4.7	51
Owner-occupied housing units - percent of total occupied housing units 2000 (complete count)	75.8	69.1	14
Median value of specified owner-occupied housing units 2000 (sample)	59,400	99,500	39
Housing units by units in structure - multiple units 2000 (sample)	20.0	15.70	4
New private housing units authorized by building permits - total 2006 (20,000-place universe)	1	4,542	37
Valuation of new private housing units authorized by building permits 2006	170	723,109	33
Employment/Business			
Civilian labor force 2006	3,540	493,842	28
Civilian labor force unemployment 2006	109	15,680	29
Civilian labor force unemployment rate 2006	3.1	3.2	34
Employment in all industries (NAICS) 2005	4,798	613,425	26
Employment in all industries (NAICS), net change 2000 (SIC)- 2005	142	54,370	31
Employment in government and government enterprises (NAICS) 2005	784	92,756	25
Earnings in all industries (NAICS, no code) 2005	139,326	19,787,993	24
Earnings in all industries (NAICS, no code), average earnings per job 2005	29,038	32,258	17
Average travel time to work for workers 16 years and over not working at home 2000	12.6	17.7	51
Private nonfarm establishments 2005	262	35,736	22
Private nonfarm employment for pay period including March 12, 2005	1,921	326,887	25
Private nonfarm employment for pay period including March 12, 2005, percent change 2000-2005	8.3	10.40	17
Nonemployer: total (NAICS 00) establishments, 2005	535	80,851	26
Accommodation and Food Services: total (NAICS 72) - sales of establishments with payroll 2002	8,409	1,537,986	25
Total number of firms 2002	763	100,402	24
Manufacturing: total (NAICS 31-33) - value of shipments 2002	0	4,987,577	54
Wholesale trade: total (NAICS 42) - sales of establishments with payroll 2002	69,884	7,223,420	12
Retail trade: total (NAICS 44-45) - sales of establishments with payroll 2002	73,562	10,122,625	20
Retail trade: total (NAICS 44-45) - sales of establishments with payroll per capita 2002	9,942	11,116	12
Land in farms (NAICS) 2002(acres)(not adjusted)	2,051,667	59,612,403	7

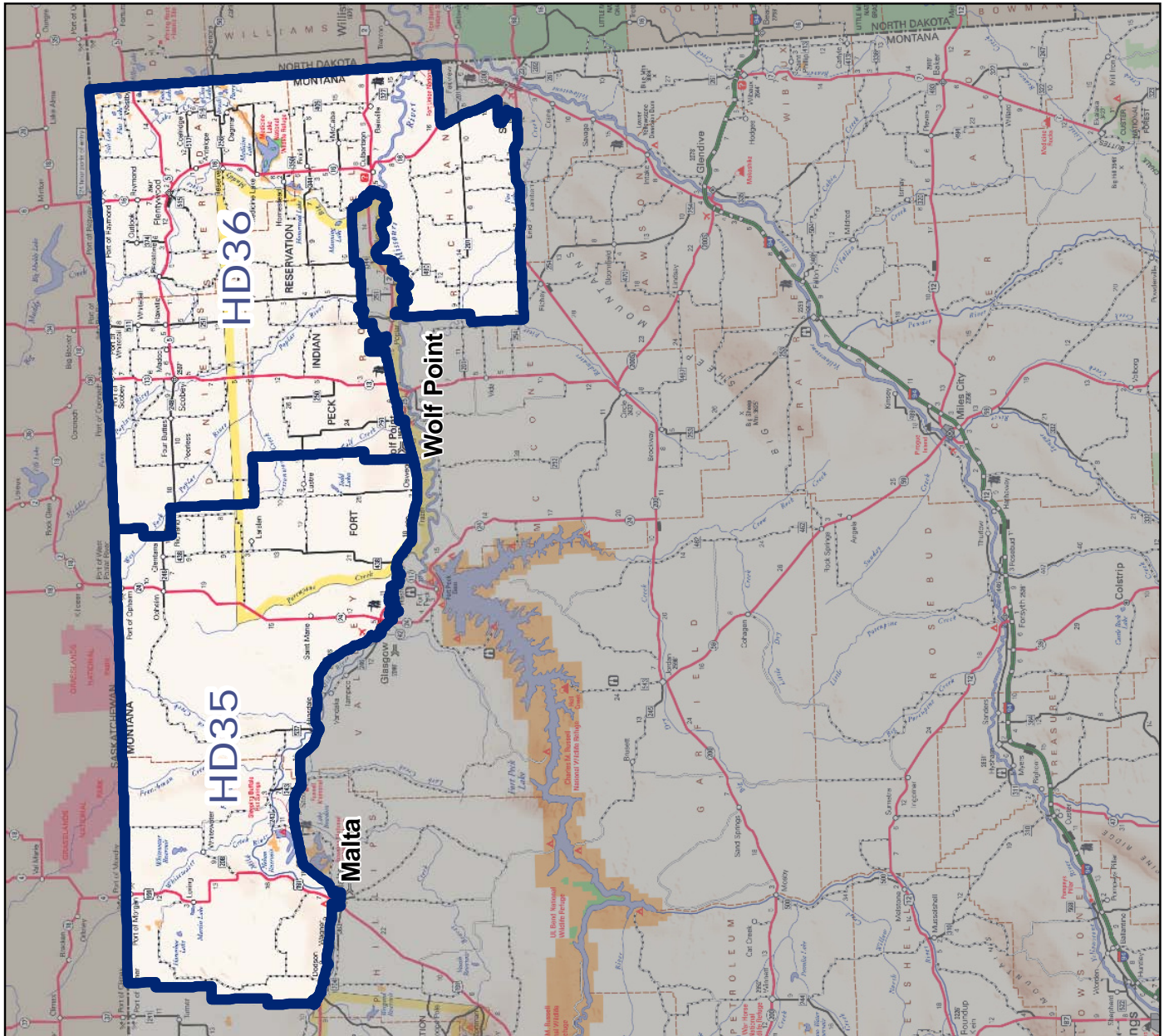
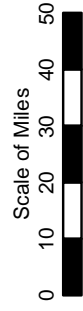
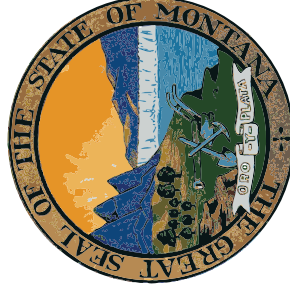
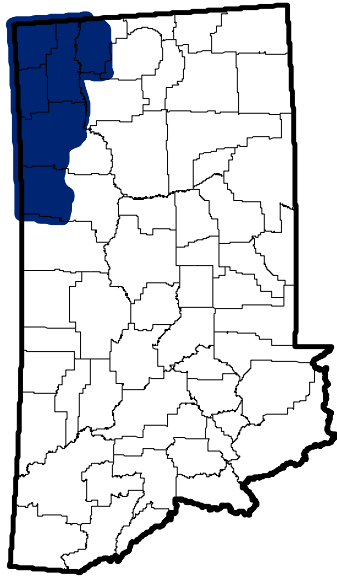
Source: U.S. Census Bureau

Montana Legislative Districts 2005-2014



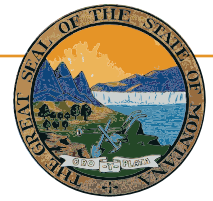


Montana Senate District 18



Notes





Montana State Library

1515 East 6th Avenue
PO Box 201800
Helena, MT 59620
(406) 444-3115

<http://msl.mt.gov>

Statewide Library Resources

- 5,000+ Online Magazines
- Ask Montana
- **Montana Shared Catalog**
 - 91 participating libraries
 - 2.3 million items
- **Montana Library Directory**

<http://mymontanalibrary.org>

<http://askmontana.org>

http://msl.mt.gov/For_Librarians/Library_Directory

Montana State Digital Library

- **Library Information Services**
 - Electronic Reference Materials
 - Online Magazines & Journals
 - Montana State Library catalog
 - Research Databases
 - Digital State Publications
- **Natural Resource Information System**
 - Maps and Geographic Information
 - Montana Digital Atlas/Map Gallery
 - Online maps & databases
 - Water Information
 - Montana GIS Portal
- **Natural Heritage Program**
 - Montana Field Guide
 - Animal, plant, and habitat information
 - Natural Heritage Tracker

http://msl.mt.gov/for_state_employees/journals.asp

<http://msl.mt.gov/msc>

http://msl.mt.gov/For_State_Employees/Find_Databases

http://msl.mt.gov/for_state_employees/State_Publications

<http://nris.mt.gov>

<http://nris.mt.gov/gis>

<http://nris.mt.gov/interactive.html>

<http://nris.mt.gov/wis>

<http://gisportal.mt.gov/Portal/>

<http://mtnhp.org/>

<http://fieldguide.mt.gov/>

<http://mtnhp.org/Tracker>

Montana Talking Book Library

- 60,000+ titles circulated to 3,000+ patrons
- State of the art digital recording booth: 800+ Montana recorded books
- On-line catalogs and services – WebOpac WebBraille
- Descriptive video collection and newspaper services
- Braille Books: TwinVision and embossed

http://msl.mt.gov/talking_book_library

<http://www.klasweb.msl.mt.gov>

Montana State Library In-House Partners

- **Montana Fish, Wildlife & Parks**
- **Natural Resources Conservation Service**

<http://fwp.mt.gov>

<http://www.mt.nrcs.usda.gov/>

Legislative Snapshot

- This booklet is available online with live links and will be updated regularly as new data becomes available.

http://msl.mt.gov/legislative_snapshot/