

Montana Land Information Act Grant Program

Presented to the Education and Local
Government Legislative Interim
Committee by:

Jennie Stapp, State Librarian

Ken Wall, Geodata Services and MT State
Library Commissioner

Paul Wick, Teton County Planner

January 14, 2016



Relevant Statutes

90-1-404, MCA gives MSL the authority to a granting process to implement the Montana Land Information Plan.

- State agencies, local government or agencies, and tribal governments or entities are eligible to apply.

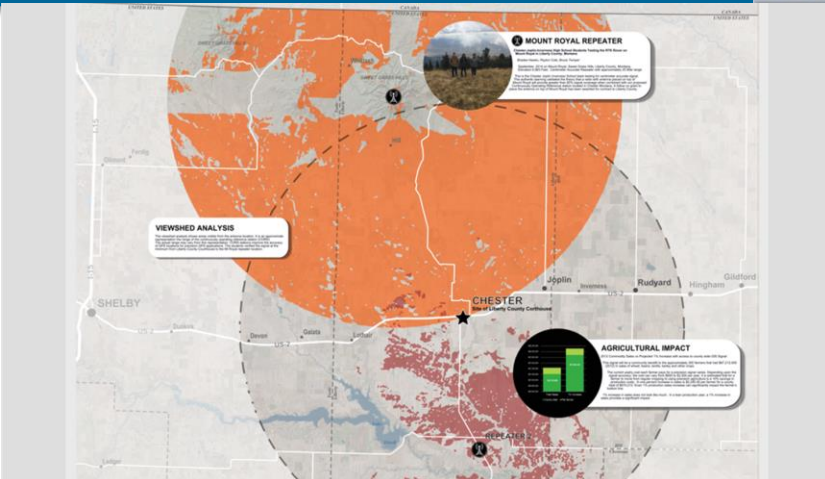
90-1-405, MCA establishes the creation of the Land information advisory council.

- As required by 90-1-406, MCA, this councils advises the State Library on the creation of land information plan and services as the grant review subcommittee to evaluate grant requests

90-1-409, MCA established the Montana land information account.

- The account is funded by a \$1/page document recordation fee recorded by counties.
 - \$.25 of every \$1 remains in the county to be deposited in a county land information account and \$.75 is deposited in the state account.
- This account is the funding source for the grant program along and much of the GIS data coordination work conducted by the State Library.

Liberty County School



Potential Precision Agriculture Impact

2012 Commodity Sales vs. Projected 1% Increase
 with access to county wide GIS Signal



1 % increase is
 \$2,240.40 per farmer for a county total of \$670,212

Swan Valley School

Student Forest Stewardship Project on the School's Property



The students designed the plan and designed wildfire reduction treatments, wildlife, wetlands and recreation enhancements with MLIA funding and GIS tools.

They arranged a contract to complete the plan in 2015 and are adding additional trails and outdoor study areas, monitoring plots for further studies.





Take Your Students to New Places

Free online mapping tools and activities for your school!

Like engaging and innovative instruction? ArcGIS Online web maps foster deeper inquiry, span subjects, and support many modes of learning.

[Explore free instructional materials](#) ↓

[Request a free school account](#) ↓

GIS Solutions for Rural Local Govt

Ken Wall, Geodata Services & State Library Commissioner



[Industries](#) [Products](#) [Support & Services](#) [About](#) [Community](#)

Ken



SMART COMMUNITIES

[Main](#)

[What It Takes](#)

[Get Started](#)

[Apps](#)

[Partners](#)

[Hub](#)

[Contact](#)

SMART COMMUNITIES START HERE.

At Esri we do more than talk about smart communities. We help you build them. Esri's ArcGIS platform empowers you to boost efficiency and

Esri ArcGIS Desktop and Online



ArcGIS for Desktop

Create and manage data, conduct analysis, and share findings to improve operations and collaboration. ArcGIS for Desktop includes a world of content, automates advanced workflows, and gives clients the information they need to do their jobs successfully.

[Learn more about ArcGIS for Desktop](#)



ArcGIS Online

Use ArcGIS Online to manage, create, store, and access hosted services, maps, and applications. Leverage this cloud-based GIS platform to manage your content and deliver focused maps and apps internally and with the public.

[Find out more about ArcGIS Online](#)

Open Data for Citizens

ArcGIS Open Data

[Documentation](#)

[GeoNet](#)

[Sign In](#)



Anyone Can Use Open Data for Free

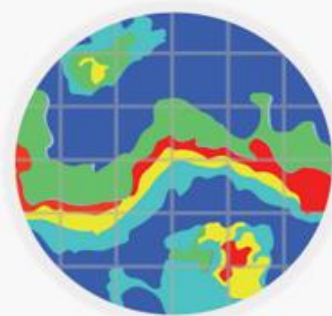
Anyone can use data published on ArcGIS Open Data at no cost. Download raw data and share your insights with your community or build new applications that serve specific users.

[Learn More](#)



Explore

Dig into the data.



Visualize

Highlight spatial patterns.



Analyze

Discover trends by creating charts.



Share

Embed analysis on your website.



Your Data Helps Real People Solve Real Problems

Real World Solutions

HOME GALLERY MAP SCENE GROUPS Sign In



*Lincoln County
Montana*

Lincoln County Featured map group



Lincoln County MT Voting
Precinct Map



Lincoln County Weed District
Integrated Pest Management



Parks and Recreation

Lincoln County, MT is located in the northwest corner of Montana. Beautiful mountains, majestic waterways, abundant natural resources and outstanding outdoor activities for every season contribute to the idyllic lifestyle enjoyed by our residents. The county seat is Libby, known as the City of Eagles.

Lincoln County Planning
512 California Ave
Libby, MT 59923

[EPL.com](#) [Help](#) [Terms of Use](#) [Privacy](#) [Contact Us!](#) [Report Abuse](#)



Blaine County Montana

Blaine County Montana Public Maps



Bear Paw Battlefield



Blaine County BLM Lands



Blaine County Cities & Towns



Blaine County Demographics

Blaine County
420 Ohio Street
Chinook, MT 59523
<http://blainecounty-mt.gov>

HOME GALLERY MAP SCENE GROUPS Sign In



Sanders County, Montana

Public



Commissioner Districts

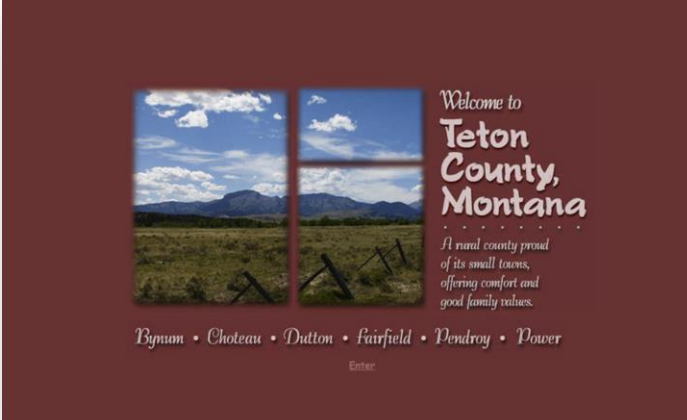


Sanders County Solid Waste
Service Area



Sanders Roads with Imagery

IMPORTANT
The data contained on these maps are NOT the official records and maybe inaccurate and incomplete!
Original and official copies of deeds, surveys, plats and ownership information, are available at the Sanders County Clerk and Recorder office and may be available on our website: Sanders County Website. By using this GIS information, the user acknowledges and accepts full responsibility for verifying the correctness and the completeness of any of the information provided here.
Sanders County does not warrant, either explicit or implied, the completeness or accuracy of the information provided. Additionally, the county accepts no liability of any kind, including but not limited to any losses or damages that may result from the wrongful reliance on this information, and the user also accepts full responsibility for any subsequent use or reuse of the data, and shall be solely responsible for results or 3rd damages which may result from the use of any of these data.



Welcome to
**Teton
County,
Montana**

*A rural county proud
of its small towns,
offering comfort and
good family values.*

Bynum • Choteau • Dutton • Fairfield • Pendroy • Power

Enter

Weed Mapping Inventory and Story Maps

Lincoln County, Montana



Lincoln County Weed District

Monitoring

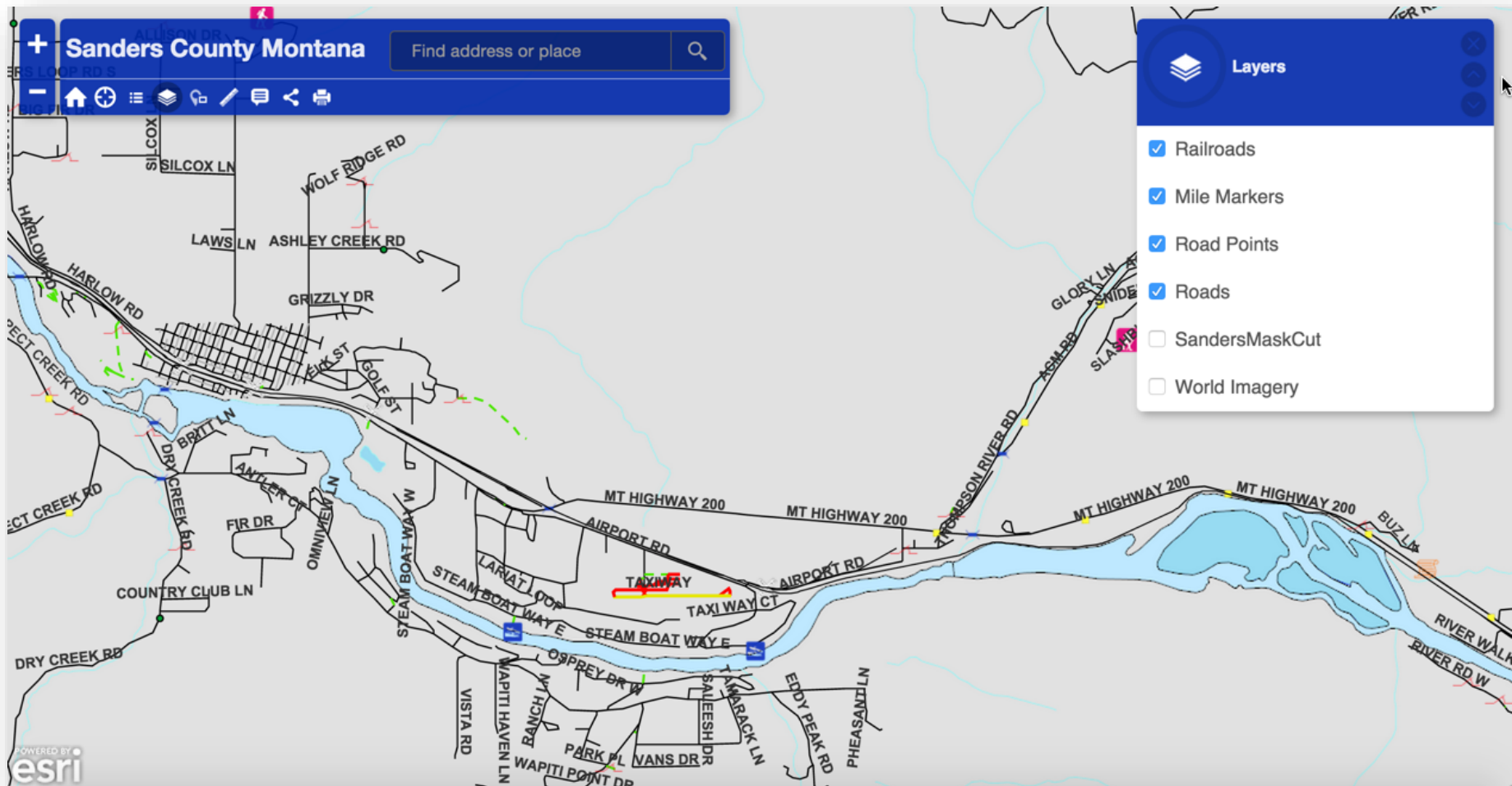
Applicators are the eyes of the program. They are essential to the weed program. With each year they become more familiar with the plant and what makes it such a successful invader. This has made it possible through the work from previous years to track the progress of the program. Early detection and response in dealing with the infected areas help prevent the spread of the invaders. Monitoring the already invaded areas gives them the ability to control these sites. Measuring the progress from year to year helps them see their efforts are making a difference. The inventory of these sites provides information so they can deal with existing invasions and prevent new ones. Each year, the progress is evaluated in regards to the goals and objectives set for the year. This provides a measure to see if progress is being made and what areas need more attention.

Education

Education is one of the most important parts of the program. Without education, people in the community may have no idea what an invasive plant is, what it looks like, or why they should care. Public awareness is made through local schools, handout information, local newspapers, inviting the public to task force meetings, and electronic media. Identification of these plants by the public becomes easier, if they know what they are looking for. The [new invader data](#) base is very



Updated Roads & Infrastructure



Choteau/Teton River Floodplain



<http://arcg.is/1HQWUoF>

Ground Truthing Addresses in Choteau

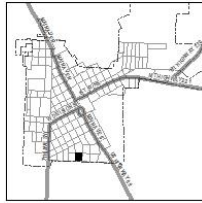
NAME: _____ DATE: _____ Block 3 of 144



INSTRUCTIONS

House Number Verification Box
45

- If the address is visible and agrees with the address on the map place a checkmark in the box.
- If the address is visible and does not agree with the address on the map write the number you observe in the box.
- If the address is NOT visible color in the box.



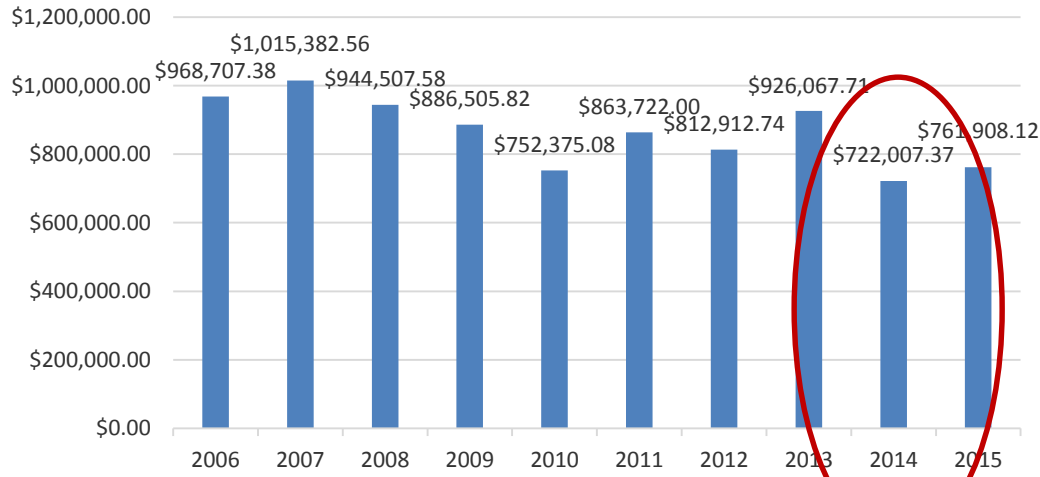
Boy Scouts are updating and verifying addresses in the towns in Teton County

MLIA Grants Awarded in FY16

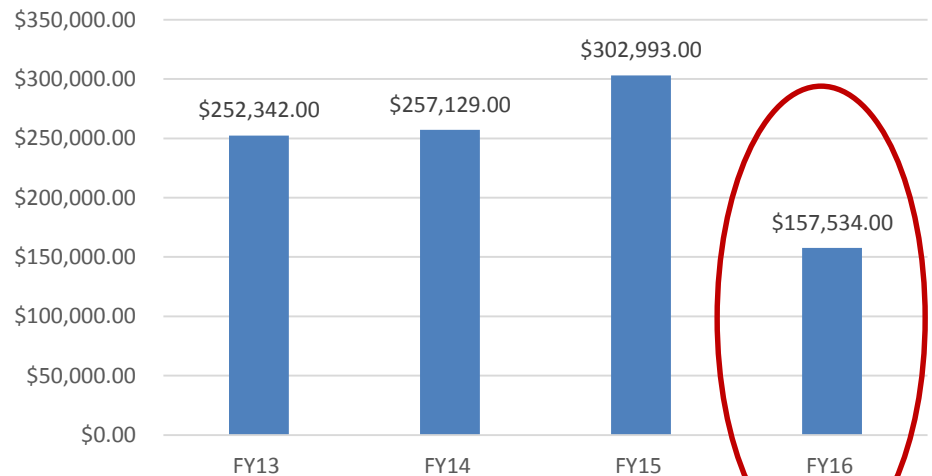
MLIA FY16 Applicant	MLIA Share	Leverage Amount
Liberty County GPS	\$8,309	\$13,321
Butte Silver Bow ArcGIS Online	\$7,500	\$10,796
Shelby Utility Infrastructure	\$18,555	\$22,420
Park County Public Land Survey System	\$20,000	\$10,000
Lake County Public Land Survey System	\$20,000	\$9,500
Superior GPS/GIS	\$13,280	\$5,164
Billings Heights Water District	\$25,000	\$46,898
Glacier County Roads	\$19,890	\$12,900
Sanders County Public Land Survey System	\$25,000	\$38,200
Land Plan Estimate of Available Funds (\$200,000)	\$157,534	\$169,199

MLIA Account Status

MLIA Collections by Fiscal Year



MLIA Grant Awards FY13-16



Montana Land Information Act Grant Program

Questions?

Jennie Stapp, State Librarian

Ken Wall, Geodata Services and
MT State Library Commissioner

Paul Wick, Teton County
Planner



Mount Royal, Sweet Grass Hills, Liberty County, Montana
Elevation 6,983 Feet
CJI Students w/ RTK Rover
Centimeter Accurate @25 Miles
September 2014

Point-of-Sale

Youth Access

Retailer Density

Point-of-Sale Strategies

Youth reACT

Disclaimer and Credits

BIG TOBACCO CAN'T ADVERTISE ON TV.

Or billboards.
Or newspapers.
Or magazines.

Instead they spend
\$7.8 billion in the
retail environment.

What's in store for
your kids? Click a
number to find out.



Point-of-Sale

Youth Access

Retailer Density

Point-of-Sale Strategies

Youth reACT

Disclaimer and Credits

Zoom to a City:

Cities ▾

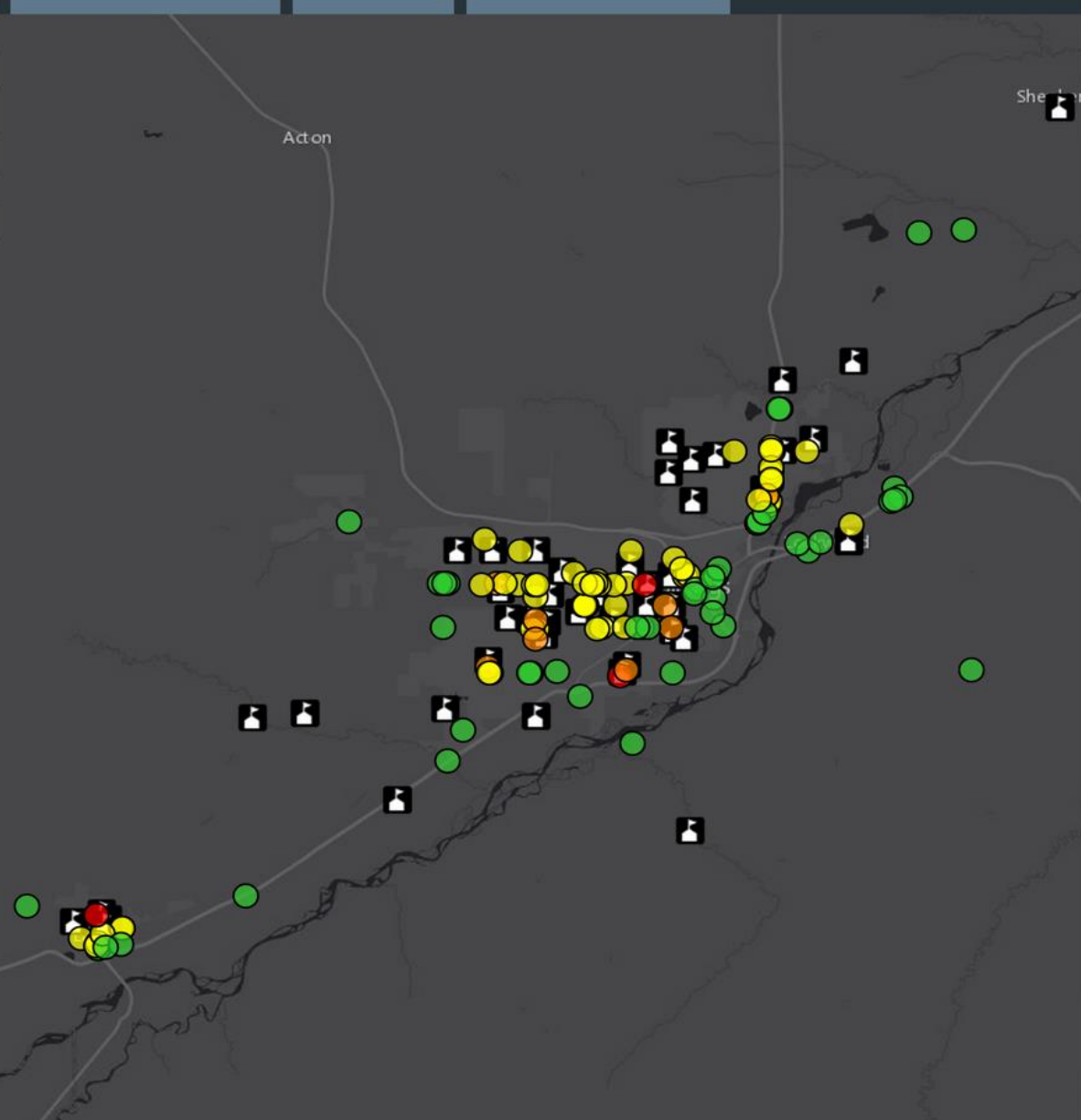
This map allows you to look at the relationship between tobacco retailers and K-12 schools in Montana. The color of the retailers represent their proximity to the nearest K-12 school.

- Click the Cities button and select a city from the dropdown list to view a city.
- If the city or town you are interested in is not listed, click on the magnifying glass button to the right and enter another place name or address to view that location.

Tobacco Retailers

- Within 500 feet of a School
- Within 500 to 1,000 feet of a School
- Within 1,000 feet to Half Mile of a School
- Greater than Half Mile from a School

Schools



Point-of-Sale

Youth Access

Retailer Density

Point-of-Sale Strategies

Youth reACT

Disclaimer and Credits

reACT Youth Empowerment

In February youth leaders attended the "Celebration on the Hill - reACT Against Corporate Tobacco" in Helena, Montana's capital. They spent the day talking to legislators and showing them the Montana Tobacco Retailer Mapper on their smartphones, tablets and mobile devices and demonstrating the density of tobacco retailers and compliance rates on youth tobacco sales in their home towns and counties.



Learn more about the reACT youth groups in Montana

<http://dphhs.mt.gov/publichealth/mtupp/reA>

